

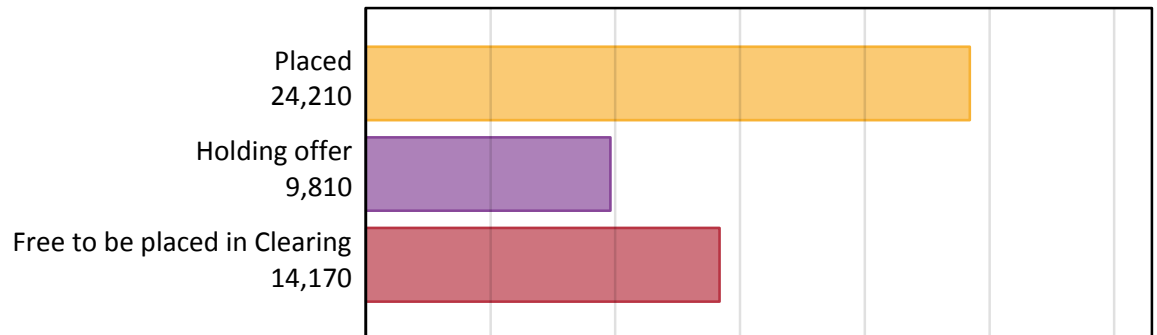
# Daily Clearing Analysis: Overview

Analysis at 00:05 on Thursday 13 August 2015 (A level results day)

## A.1 Applicants by type and status from the EU - excluding UK, 2015 cycle

| Applicant type     | Status                        | 2015   |
|--------------------|-------------------------------|--------|
| Main scheme        | Placed (Clearing)             | 360    |
|                    | Placed (Adjustment)           | 0      |
|                    | Placed (Firm)                 | 21,290 |
|                    | Placed (Insurance)            | 1,560  |
|                    | Placed (Other)                | 900    |
|                    | Holding offer                 | 9,810  |
|                    | Free to be placed in Clearing | 14,170 |
| Direct to Clearing | Placed (Direct to Clearing)   | 100    |
|                    | Other (Direct to Clearing)    | 390    |
| All applicants     | Placed                        | 24,210 |

## A.2 Summary of applicants who are placed, holding offers or free to be placed in Clearing ( the EU - excluding UK )



### A.3 All placed applicants from the EU - excluding UK: A level results day

All placed applicants: difference between cycle and 2014 cycle

Placed



### A.4 All placed applicants from the EU - excluding UK: A level results day

All placed applicants: applicants at A level results day

| Applicant type | Status | 2011   | 2012   | 2013   | 2014   | 2015   |
|----------------|--------|--------|--------|--------|--------|--------|
| All applicants | Placed | 21,700 | 18,750 | 20,130 | 21,790 | 24,210 |

### A.5 All placed applicants from the EU - excluding UK: A level results day

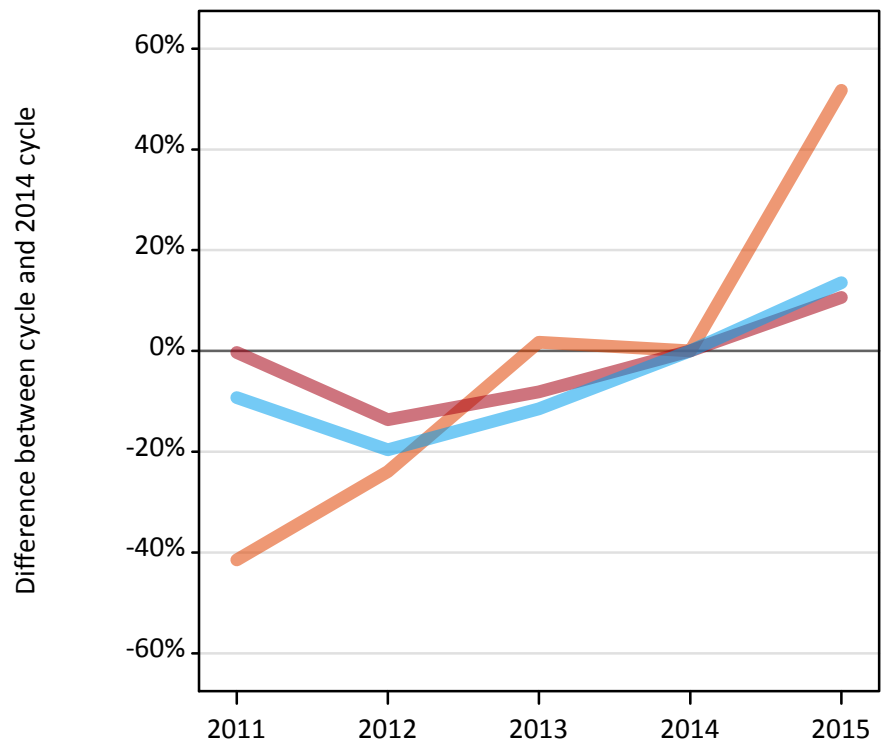
All placed applicants: difference between cycle and 2014 cycle

| Applicant type | Status | 2011 | 2012 | 2013 | 2014 | 2015 |
|----------------|--------|------|------|------|------|------|
| All applicants | Placed | -0%  | -14% | -8%  | 0%   | 11%  |

## A.6 Placed main scheme applicants from the EU - excluding UK: A level results day

Selected placed routes: difference between cycle and 2014 cycle

- Placed (Clearing)
- Placed (Firm)
- Placed (Insurance)



## A.7 Placed main scheme applicants from the EU - excluding UK: A level results day

All Main scheme placed routes (excluding Adjustment): applicants at A level results day

| Applicant type | Status             | 2011   | 2012   | 2013   | 2014   | 2015   |
|----------------|--------------------|--------|--------|--------|--------|--------|
| Main scheme    | Placed (Clearing)  | 140    | 180    | 240    | 230    | 360    |
|                | Placed (Firm)      | 19,190 | 16,620 | 17,690 | 19,250 | 21,290 |
|                | Placed (Insurance) | 1,240  | 1,100  | 1,210  | 1,370  | 1,560  |
|                | Placed (Other)     | 1,070  | 790    | 880    | 860    | 900    |

## A.8 Placed main scheme applicants from the EU - excluding UK: A level results day

Selected placed routes: difference between cycle and 2014 cycle

| Applicant type | Status             | 2011 | 2012 | 2013 | 2014 | 2015 |
|----------------|--------------------|------|------|------|------|------|
| Main scheme    | Placed (Clearing)  | -41% | -24% | 2%   | 0%   | 52%  |
|                | Placed (Firm)      | -0%  | -14% | -8%  | 0%   | 11%  |
|                | Placed (Insurance) | -9%  | -20% | -11% | 0%   | 14%  |

### **A.9 Main scheme applicants placed through adjustment: A level results day**

Placed through adjustment: difference between cycle and 2014 cycle

**[Analysis on placed by adjustment available from 14 August 2015]**

### **A.10 Main scheme applicants placed through adjustment: A level results day**

Placed through adjustment: applicants at A level results day

**[Analysis on placed by adjustment available from 14 August 2015]**

### **A.11 Main scheme applicants placed through adjustment: A level results day**

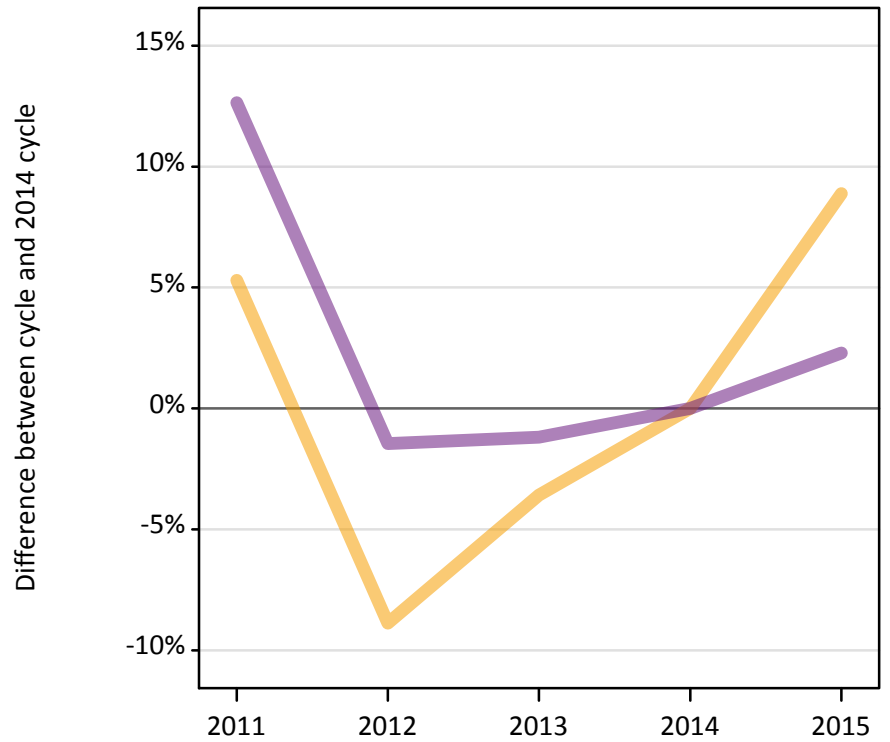
Placed through adjustment: difference between cycle and 2014 cycle

**[Analysis on placed by adjustment available from 14 August 2015]**

### A.12 Main scheme applicants not currently placed from the EU - excluding UK: A level results day

Applicants in unplaced states: difference between cycle and 2014 cycle

— Holding offer  
— Free to be placed in Clearing



### A.13 Main scheme applicants not currently placed from the EU - excluding UK: A level results day

Applicants in unplaced states: applicants at A level results day

| Applicant type | Status                        | 2011   | 2012   | 2013   | 2014   | 2015   |
|----------------|-------------------------------|--------|--------|--------|--------|--------|
| Main scheme    | Holding offer                 | 9,480  | 8,210  | 8,680  | 9,010  | 9,810  |
|                | Free to be placed in Clearing | 15,610 | 13,650 | 13,690 | 13,850 | 14,170 |

### A.14 Main scheme applicants not currently placed from the EU - excluding UK: A level results day

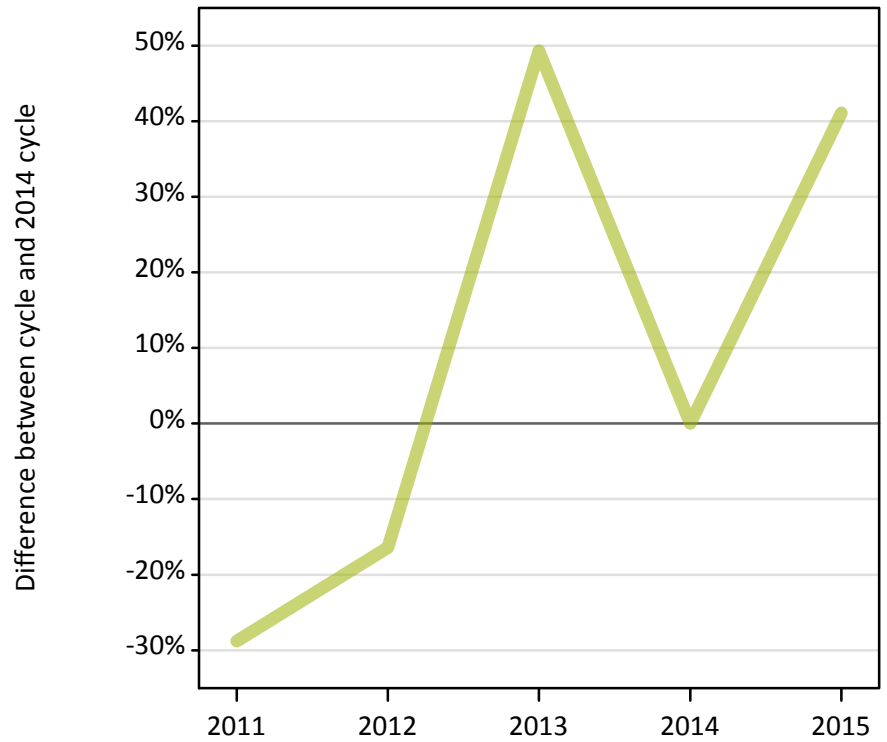
Applicants in unplaced states: difference between cycle and 2014 cycle

| Applicant type | Status                        | 2011 | 2012 | 2013 | 2014 | 2015 |
|----------------|-------------------------------|------|------|------|------|------|
| Main scheme    | Holding offer                 | 5%   | -9%  | -4%  | 0%   | 9%   |
|                | Free to be placed in Clearing | 13%  | -1%  | -1%  | 0%   | 2%   |

### A.15 Direct to Clearing applicants from the EU - excluding UK: A level results day

Placed (Direct to Clearing): difference between cycle and 2014 cycle

Placed (Direct to Clearing)



### A.16 Direct to Clearing applicants from the EU - excluding UK: A level results day

Direct to Clearing A level results day

| Applicant type     | Status                      | 2011 | 2012 | 2013 | 2014 | 2015 |
|--------------------|-----------------------------|------|------|------|------|------|
| Direct to Clearing | Placed (Direct to Clearing) | 50   | 60   | 110  | 70   | 100  |
|                    | Other (Direct to Clearing)  | 500  | 390  | 380  | 360  | 390  |

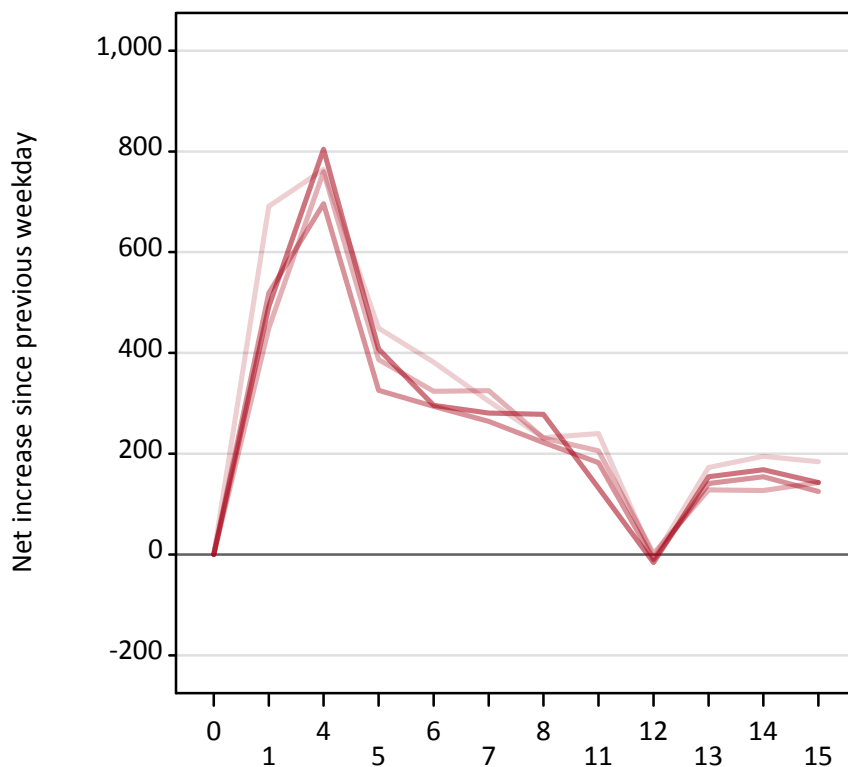
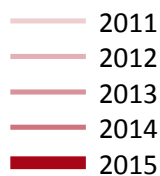
### A.17 Direct to Clearing applicants from the EU - excluding UK: A level results day

Placed (Direct to Clearing): difference between cycle and 2014 cycle

| Applicant type     | Status                      | 2011 | 2012 | 2013 | 2014 | 2015 |
|--------------------|-----------------------------|------|------|------|------|------|
| Direct to Clearing | Placed (Direct to Clearing) | -29% | -16% | 49%  | 0%   | 41%  |

### A.18 All Placed: Daily net change (from the EU - excluding UK)

Net increase since previous weekday (2015 cycle up to A level results day)



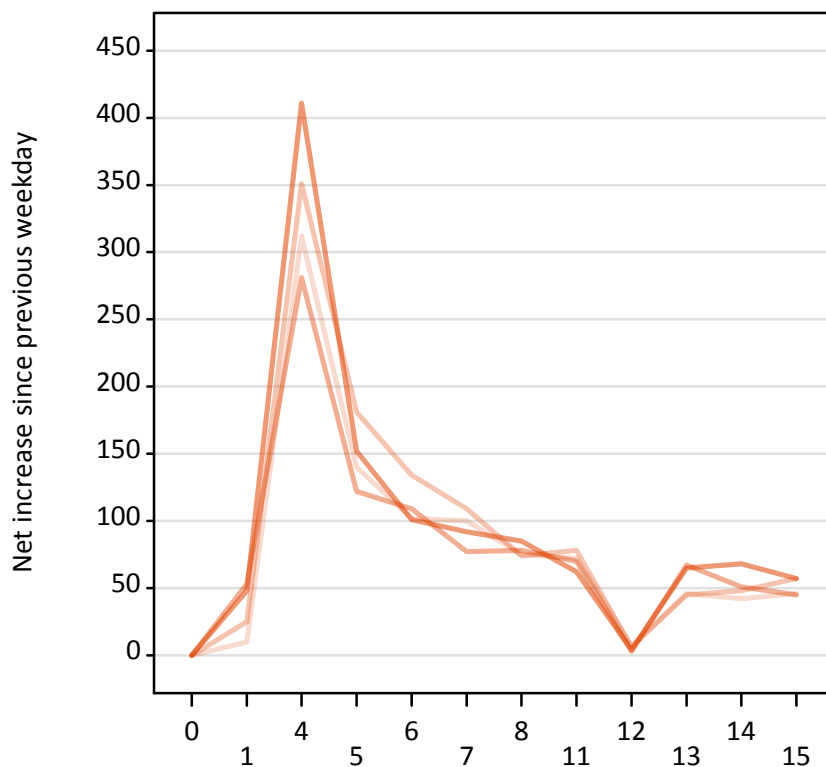
### A.19 All Placed: Daily net change (from the EU - excluding UK)

Net increase since previous weekday (2015 cycle up to A level results day)

| Applicant status, days since A level results day |    | 2011 | 2012 | 2013 | 2014 | 2015 |
|--|----|------|------|------|------|------|
| All Placed                                       | 0  | 0    | 0    | 0    | 0    | 0    |
|  | 1  | 690  | 450  | 520  | 490  |      |
|  | 4  | 760  | 760  | 700  | 800  |      |
|  | 5  | 450  | 390  | 330  | 410  |      |
|  | 6  | 380  | 320  | 290  | 300  |      |
|  | 7  | 300  | 330  | 260  | 280  |      |
|  | 8  | 230  | 230  | 220  | 280  |      |
|  | 11 | 240  | 210  | 180  | 130  |      |
|  | 12 | -10  | 0    | -10  | -20  |      |
|  | 13 | 170  | 130  | 140  | 150  |      |
|  | 14 | 200  | 130  | 150  | 170  |      |
|  | 15 | 180  | 140  | 130  | 140  |      |

### A.20 Placed through Clearing only: Daily net change (from the EU - excluding UK)

Net increase since previous weekday (2015 cycle up to A level results day)



### A.21 Placed through Clearing only: Daily net change (from the EU - excluding UK)

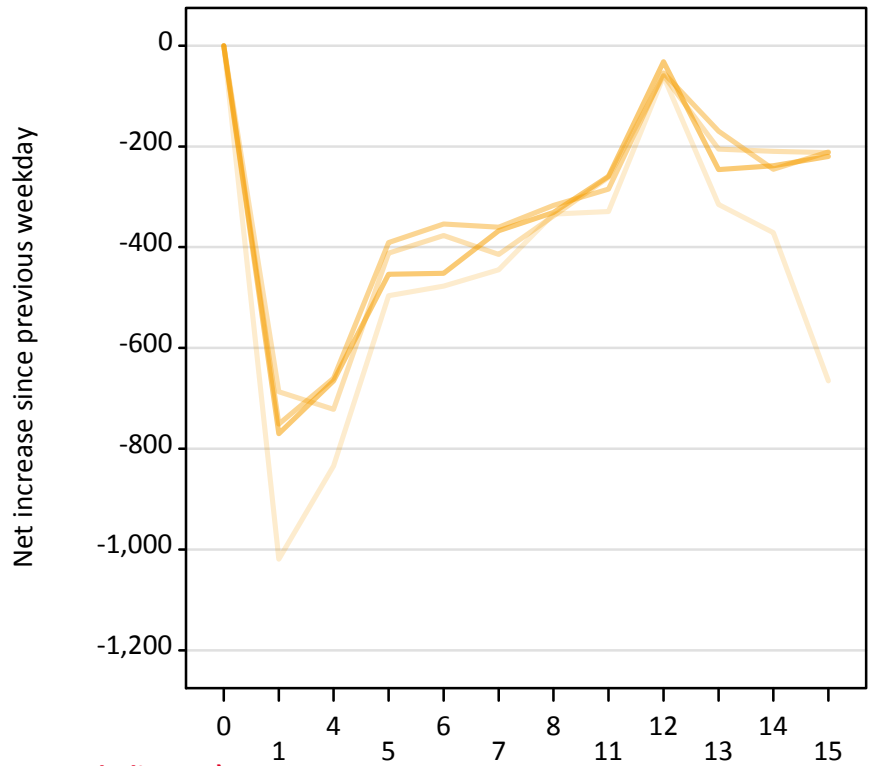
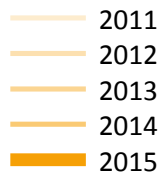
Net increase since previous weekday (2015 cycle up to A level results day)

| Applicant status, days since A level results day |    | 2011 | 2012 | 2013 | 2014 | 2015 |
|--|----|------|------|------|------|------|
| Placed through Clearing only                     | 0  | 0    | 0    | 0    | 0    | 0    |
|  | 1  | 10   | 30   | 50   | 50   |      |
|  | 4  | 310  | 350  | 280  | 410  |      |
|  | 5  | 140  | 180  | 120  | 150  |      |
|  | 6  | 100  | 130  | 110  | 100  |      |
|  | 7  | 100  | 110  | 80   | 90   |      |
|  | 8  | 80   | 70   | 80   | 90   |      |
|  | 11 | 70   | 80   | 70   | 60   |      |
|  | 12 | 10   | 10   | 0    | 0    |      |
|  | 13 | 50   | 50   | 70   | 70   |      |
|  | 14 | 40   | 50   | 50   | 70   |      |
|  | 15 | 50   | 60   | 50   | 60   |      |



### A.22 Holding Offer: Daily net change (from the EU - excluding UK)

Net increase since previous weekday (2015 cycle up to A level results day)



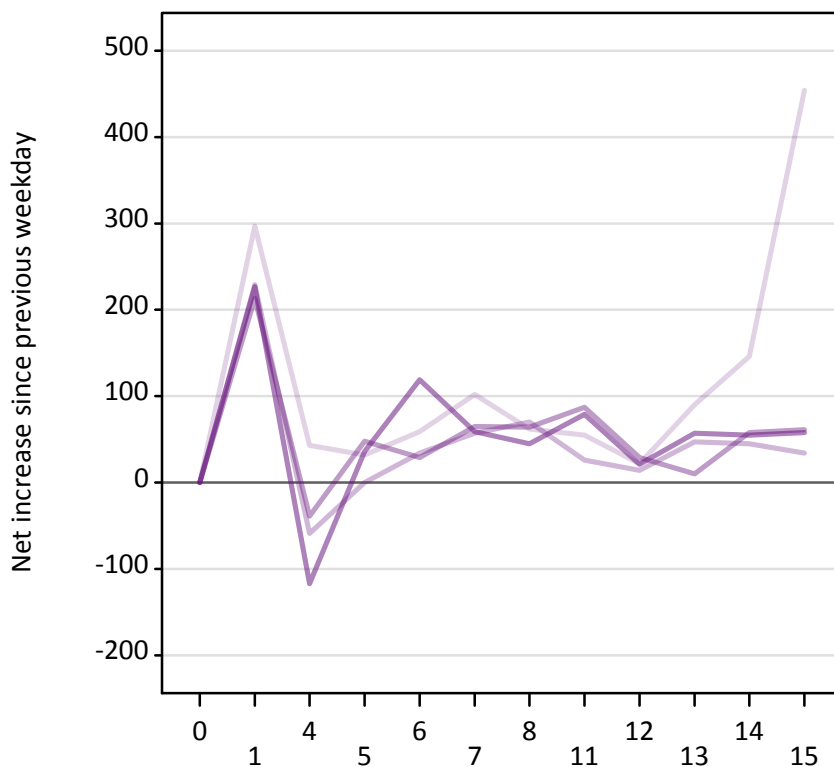
### A.23 Holding Offer: Daily net change (from the EU - excluding UK)

Net increase since previous weekday (2015 cycle up to A level results day)

| Applicant status, days since A level results day |    | 2011   | 2012 | 2013 | 2014 | 2015 |
|--|----|--------|------|------|------|------|
| Holding Offer                                    | 0  | 0      | 0    | 0    | 0    | 0    |
|  | 1  | -1,020 | -690 | -750 | -770 | -770 |
|  | 4  | -830   | -720 | -660 | -670 | -670 |
|  | 5  | -500   | -410 | -390 | -450 | -450 |
|  | 6  | -480   | -380 | -350 | -450 | -450 |
|  | 7  | -450   | -410 | -360 | -370 | -370 |
|  | 8  | -330   | -340 | -320 | -330 | -330 |
|  | 11 | -330   | -260 | -290 | -260 | -260 |
|  | 12 | -60    | -60  | -50  | -30  | -30  |
|  | 13 | -320   | -210 | -170 | -250 | -250 |
|  | 14 | -370   | -210 | -250 | -240 | -240 |
|  | 15 | -670   | -210 | -210 | -220 | -220 |

### A.24 Free to be placed in Clearing: Daily net change (from the EU - excluding UK)

Net increase since previous weekday (2015 cycle up to A level results day)



### A.25 Free to be placed in Clearing: Daily net change (from the EU - excluding UK)

Net increase since previous weekday (2015 cycle up to A level results day)

| Applicant status, days since A level results day |    | 2011 | 2012 | 2013 | 2014 | 2015 |
|--|----|------|------|------|------|------|
| Free to be placed in Clearing                    | 0  | 0    | 0    | 0    | 0    | 0    |
|  | 1  | 300  | 230  | 210  | 230  |      |
|  | 4  | 40   | -60  | -40  | -120 |      |
|  | 5  | 30   | 0    | 50   | 40   |      |
|  | 6  | 60   | 30   | 30   | 120  |      |
|  | 7  | 100  | 60   | 70   | 60   |      |
|  | 8  | 60   | 70   | 60   | 50   |      |
|  | 11 | 60   | 30   | 90   | 80   |      |
|  | 12 | 20   | 10   | 30   | 20   |      |
|  | 13 | 90   | 50   | 10   | 60   |      |
|  | 14 | 150  | 50   | 60   | 60   |      |
|  | 15 | 450  | 30   | 60   | 60   |      |