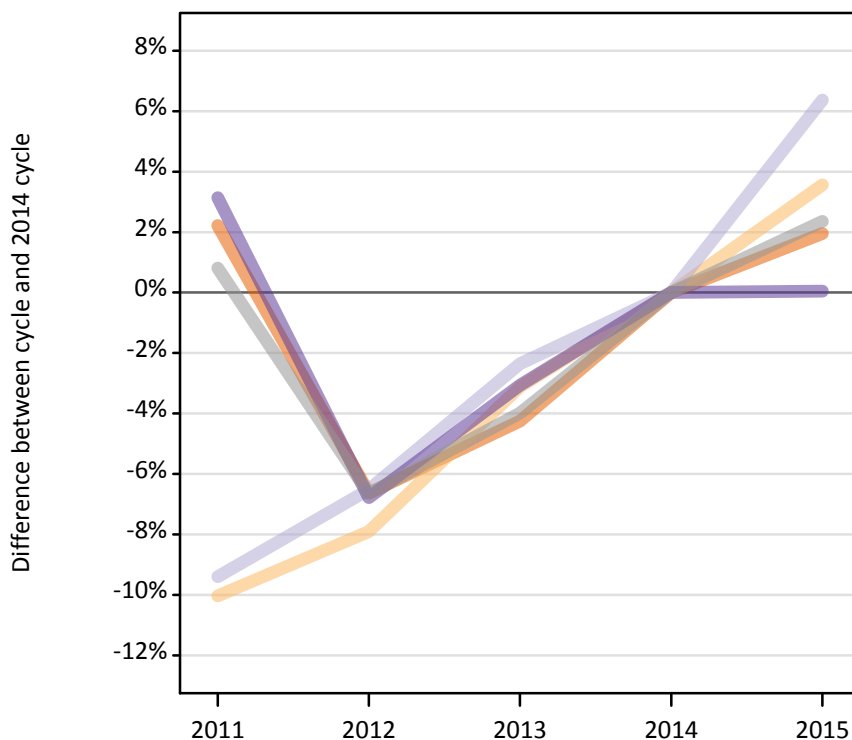
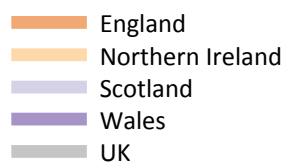


Applications by country and type of provider at the 30 June deadline

I.5.1 Applications by domicile and country of provider : All domiciles

Difference between cycle and 2014 cycle



I.5.2 Applications by domicile and country of provider : All domiciles

Domicile of applicant and country of provider		2011	2012	2013	2014	2015
All domiciles	England	2,419,570	2,210,010	2,266,440	2,367,110	2,413,220
	Northern Ireland	57,210	58,570	61,610	63,590	65,860
	Scotland	258,120	266,340	278,200	284,900	303,060
	Wales	112,910	102,040	106,110	109,470	109,520
	UK	2,847,810	2,636,960	2,712,360	2,825,070	2,891,650

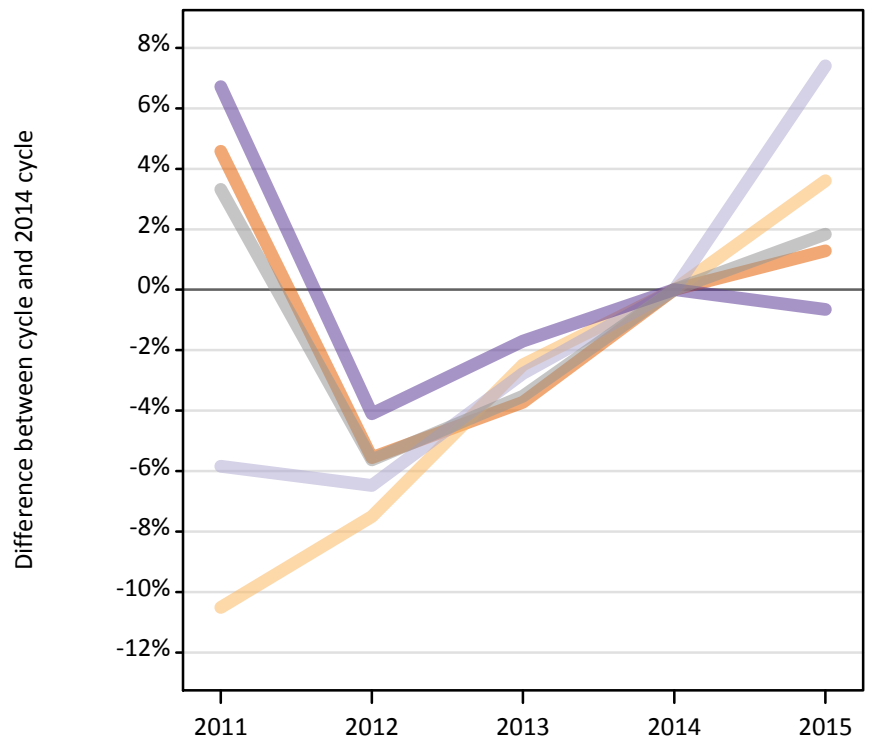
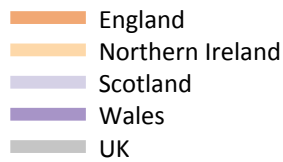
I.5.3 Applications by domicile and country of provider : All domiciles

Difference between cycle and 2014 cycle

Domicile of applicant and country of provider		2011	2012	2013	2014	2015
All domiciles	England	2%	-7%	-4%	0%	2%
	Northern Ireland	-10%	-8%	-3%	0%	4%
	Scotland	-9%	-7%	-2%	0%	6%
	Wales	3%	-7%	-3%	0%	0%
	UK	1%	-7%	-4%	0%	2%

I.5.4 Applications by domicile and country of provider : UK

Difference between cycle and 2014 cycle



I.5.5 Applications by domicile and country of provider : UK

Domicile of applicant and country of provider		2011	2012	2013	2014	2015
UK	England	2,045,740	1,847,430	1,883,260	1,956,080	1,981,180
	Northern Ireland	52,190	53,940	56,870	58,320	60,420
	Scotland	204,210	202,830	210,880	216,880	232,950
	Wales	100,070	89,930	92,180	93,770	93,170
	UK	2,402,210	2,194,130	2,243,190	2,325,050	2,367,720

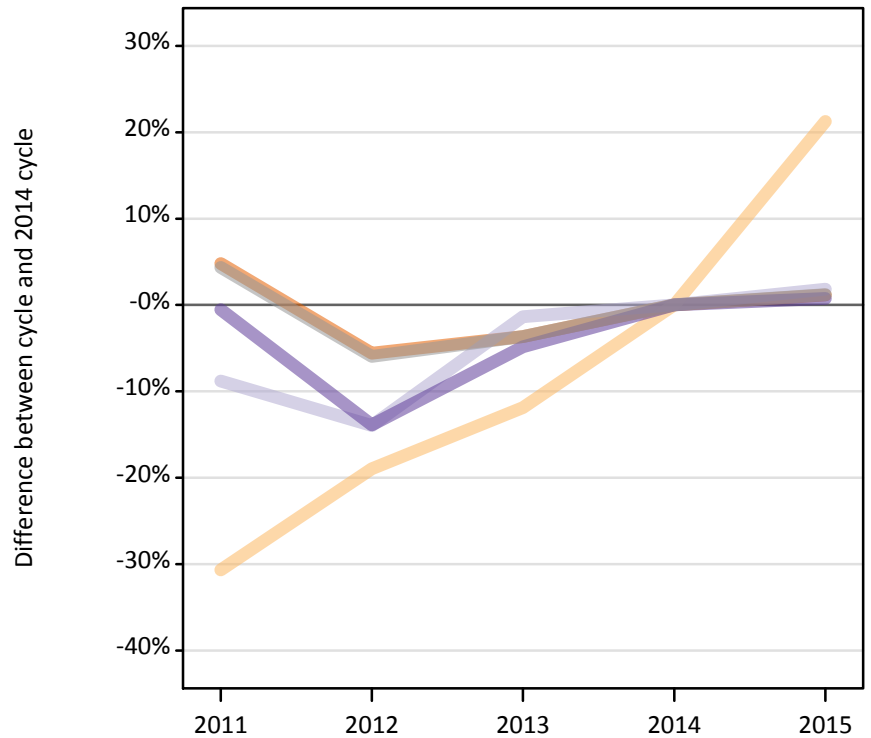
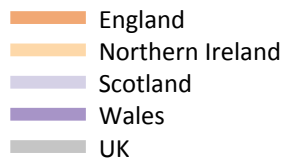
I.5.6 Applications by domicile and country of provider : UK

Difference between cycle and 2014 cycle

Domicile of applicant and country of provider		2011	2012	2013	2014	2015
UK	England	5%	-6%	-4%	0%	1%
	Northern Ireland	-11%	-8%	-2%	0%	4%
	Scotland	-6%	-6%	-3%	0%	7%
	Wales	7%	-4%	-2%	0%	-1%
	UK	3%	-6%	-4%	0%	2%

I.5.7 Applications by domicile and country of provider : England

Difference between cycle and 2014 cycle



I.5.8 Applications by domicile and country of provider : England

Domicile of applicant and country of provider		2011	2012	2013	2014	2015
England	England	1,957,100	1,763,610	1,799,080	1,867,540	1,889,510
	Northern Ireland	1,930	2,260	2,460	2,790	3,380
	Scotland	33,430	31,540	36,160	36,660	37,330
	Wales	51,100	44,240	48,870	51,370	51,760
	UK	2,043,550	1,841,650	1,886,570	1,958,350	1,981,970

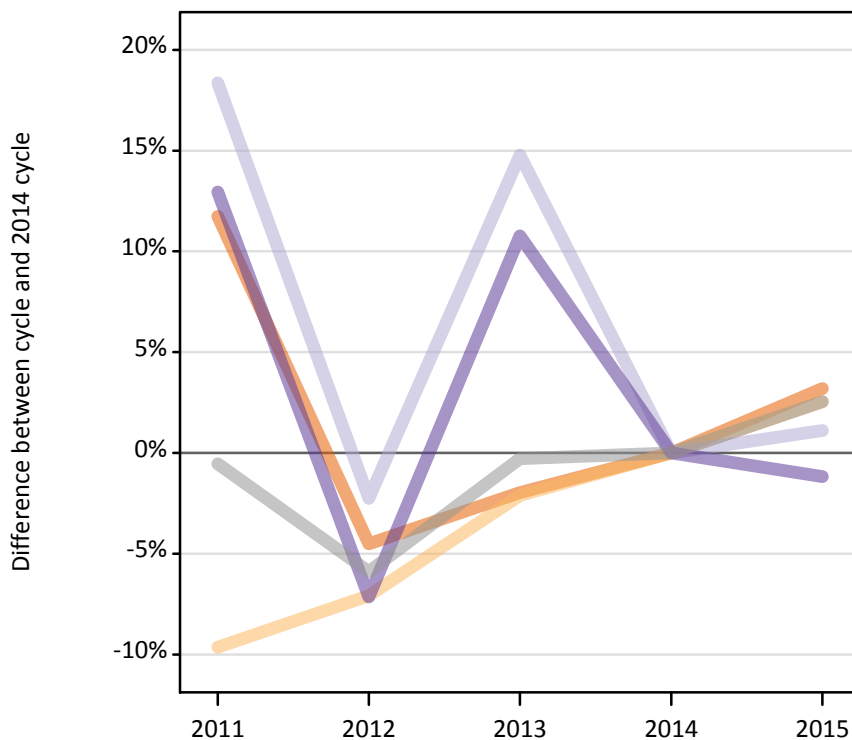
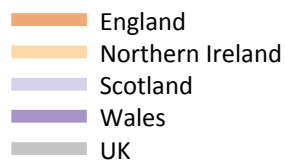
I.5.9 Applications by domicile and country of provider : England

Difference between cycle and 2014 cycle

Domicile of applicant and country of provider		2011	2012	2013	2014	2015
England	England	5%	-6%	-4%	0%	1%
	Northern Ireland	-31%	-19%	-12%	0%	21%
	Scotland	-9%	-14%	-1%	0%	2%
	Wales	-1%	-14%	-5%	0%	1%
	UK	4%	-6%	-4%	0%	1%

I.5.10 Applications by domicile and country of provider : Northern Ireland

Difference between cycle and 2014 cycle



I.5.11 Applications by domicile and country of provider : Northern Ireland

Domicile of applicant and country of provider		2011	2012	2013	2014	2015
Northern Ireland	England	29,210	24,960	25,620	26,140	26,970
	Northern Ireland	49,960	51,380	54,130	55,300	56,700
	Scotland	10,380	8,570	10,070	8,770	8,870
	Wales	1,340	1,100	1,320	1,190	1,180
	UK	90,890	86,010	91,130	91,390	93,720

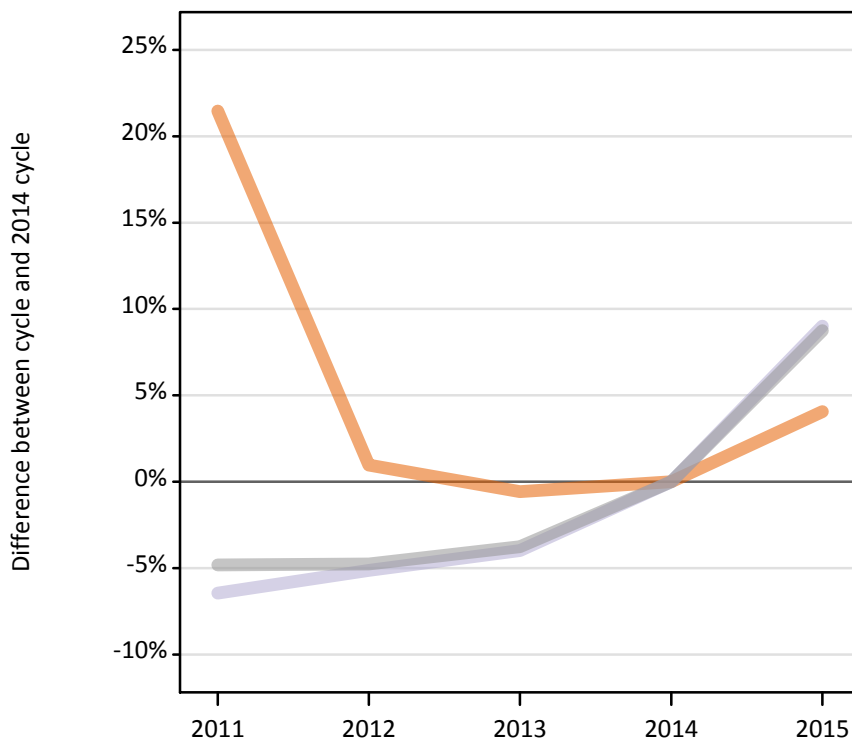
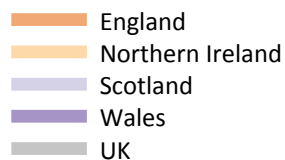
I.5.12 Applications by domicile and country of provider : Northern Ireland

Difference between cycle and 2014 cycle

Domicile of applicant and country of provider		2011	2012	2013	2014	2015
Northern Ireland	England	12%	-5%	-2%	0%	3%
	Northern Ireland	-10%	-7%	-2%	0%	3%
	Scotland	18%	-2%	15%	0%	1%
	Wales	13%	-7%	11%	0%	-1%
	UK	-1%	-6%	-0%	0%	3%

I.5.13 Applications by domicile and country of provider : Scotland

Difference between cycle and 2014 cycle



I.5.14 Applications by domicile and country of provider : Scotland

Domicile of applicant and country of provider		2011	2012	2013	2014	2015
Scotland	England	11,810	9,810	9,660	9,720	10,120
	Northern Ireland	220	210	200	140	230
	Scotland	159,370	161,620	163,580	170,370	185,700
	Wales	390	250	250	260	250
	UK	171,790	171,890	173,690	180,490	196,280

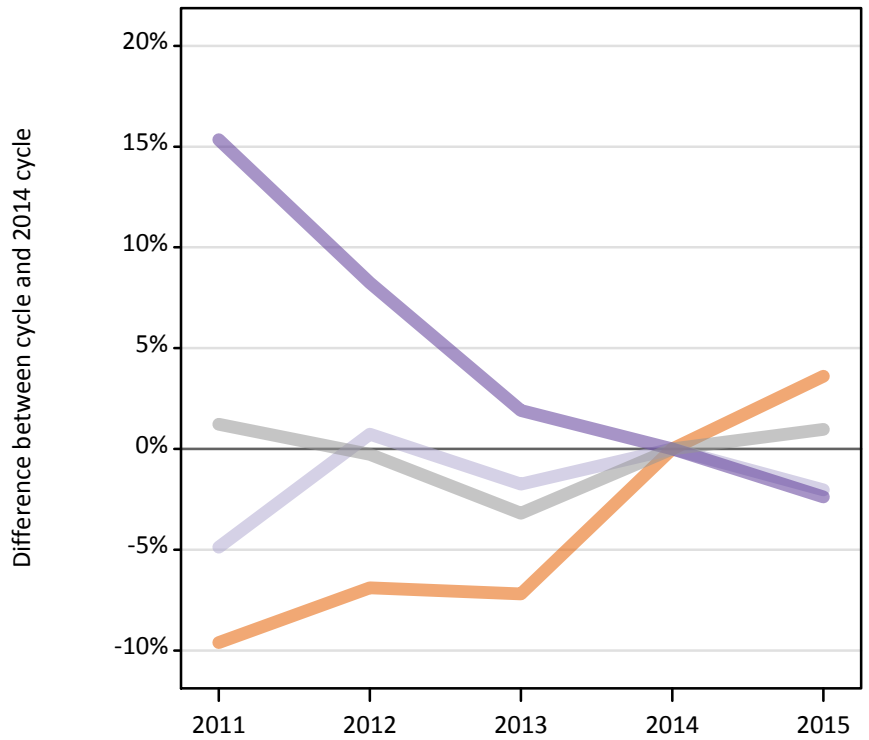
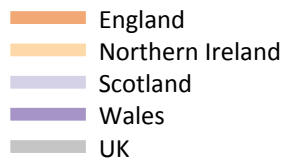
I.5.15 Applications by domicile and country of provider : Scotland

Difference between cycle and 2014 cycle

Domicile of applicant and country of provider		2011	2012	2013	2014	2015
Scotland	England	21%	1%	-1%	0%	4%
	Northern Ireland	52%	48%	41%	0%	60%
	Scotland	-6%	-5%	-4%	0%	9%
	Wales	52%	-2%	-3%	0%	-5%
	UK	-5%	-5%	-4%	0%	9%

I.5.16 Applications by domicile and country of provider : Wales

Difference between cycle and 2014 cycle



I.5.17 Applications by domicile and country of provider : Wales

Domicile of applicant and country of provider		2011	2012	2013	2014	2015
Wales	England	47,630	49,050	48,900	52,690	54,590
	Northern Ireland	80	90	90	90	110
	Scotland	1,030	1,090	1,070	1,090	1,060
	Wales	47,240	44,330	41,740	40,960	39,990
	UK	95,990	94,580	91,790	94,830	95,750

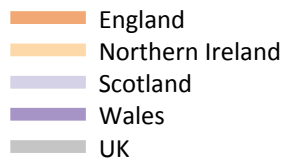
I.5.18 Applications by domicile and country of provider : Wales

Difference between cycle and 2014 cycle

Domicile of applicant and country of provider		2011	2012	2013	2014	2015
Wales	England	-10%	-7%	-7%	0%	4%
	Northern Ireland	-14%	1%	-6%	0%	19%
	Scotland	-5%	1%	-2%	0%	-2%
	Wales	15%	8%	2%	0%	-2%
	UK	1%	-0%	-3%	0%	1%

I.5.19 Applications by domicile and country of provider : EU (excluding UK)

Difference between cycle and 2014 cycle



I.5.20 Applications by domicile and country of provider : EU (excluding UK)

Domicile of applicant and country of provider		2011	2012	2013	2014	2015
EU (excluding UK)	England	156,970	126,840	132,210	142,780	157,920
	Northern Ireland	4,000	3,570	3,550	3,680	3,440
	Scotland	37,070	43,610	46,240	45,720	46,890
	Wales	5,390	4,550	4,980	5,590	6,240
	UK	203,430	178,580	186,980	197,770	214,490

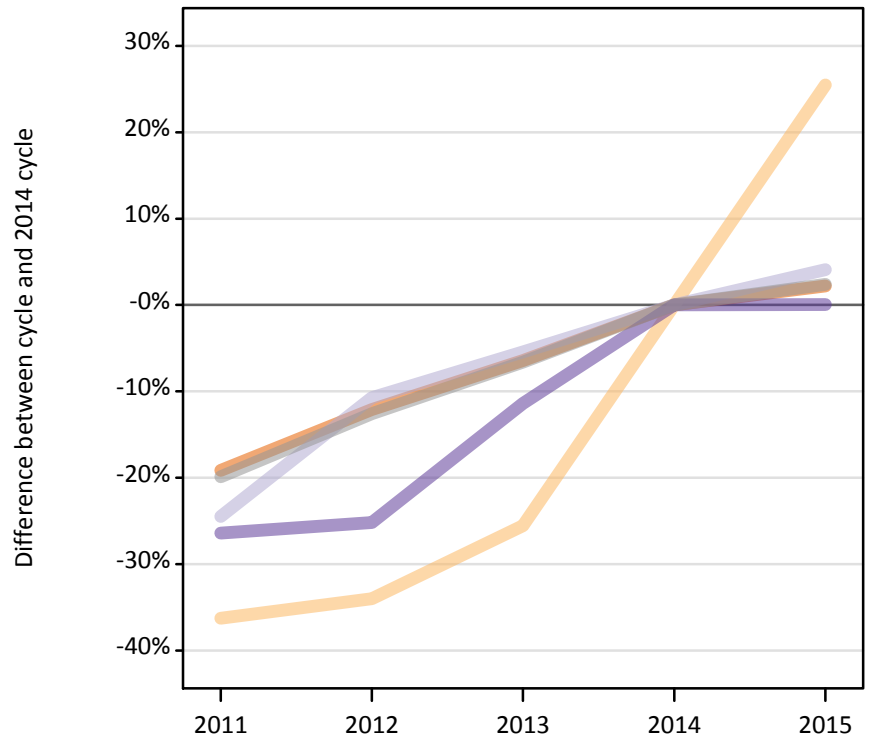
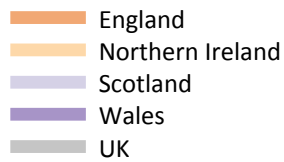
I.5.21 Applications by domicile and country of provider : EU (excluding UK)

Difference between cycle and 2014 cycle

Domicile of applicant and country of provider		2011	2012	2013	2014	2015
EU (excluding UK)	England	10%	-11%	-7%	0%	11%
	Northern Ireland	9%	-3%	-3%	0%	-6%
	Scotland	-19%	-5%	1%	0%	3%
	Wales	-3%	-19%	-11%	0%	12%
	UK	3%	-10%	-5%	0%	8%

I.5.22 Applications by domicile and country of provider : Not EU

Difference between cycle and 2014 cycle



I.5.23 Applications by domicile and country of provider : Not EU

Domicile of applicant and country of provider		2011	2012	2013	2014	2015
Not EU	England	216,870	235,730	250,970	268,250	274,120
	Northern Ireland	1,020	1,050	1,190	1,590	2,000
	Scotland	16,840	19,910	21,080	22,300	23,210
	Wales	7,440	7,560	8,950	10,110	10,110
	UK	242,160	264,250	282,190	302,240	309,440

I.5.24 Applications by domicile and country of provider : Not EU

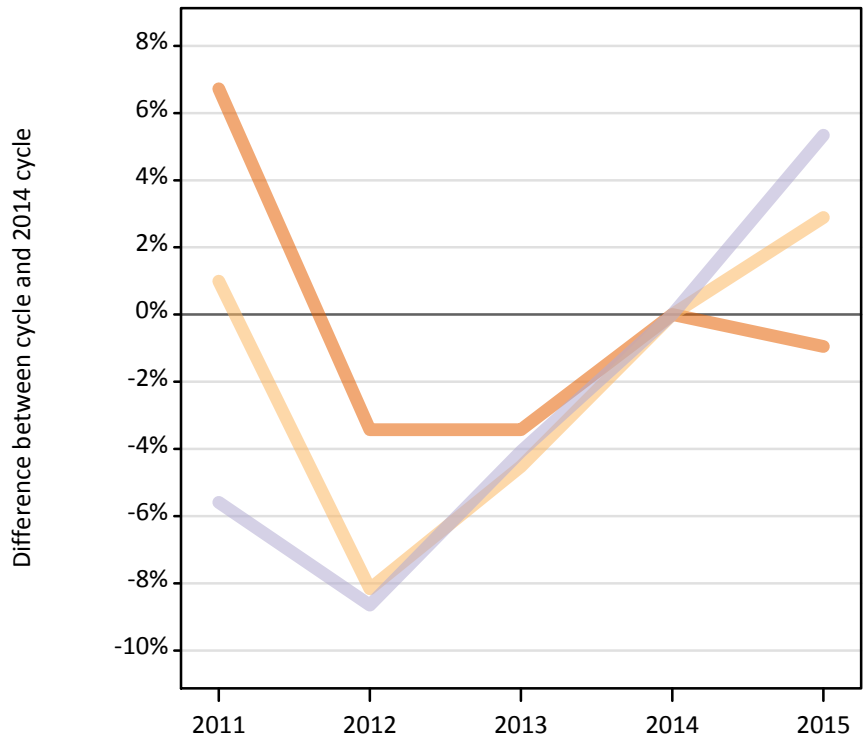
Difference between cycle and 2014 cycle

Domicile of applicant and country of provider		2011	2012	2013	2014	2015
Not EU	England	-19%	-12%	-6%	0%	2%
	Northern Ireland	-36%	-34%	-26%	0%	25%
	Scotland	-24%	-11%	-5%	0%	4%
	Wales	-26%	-25%	-11%	0%	0%
	UK	-20%	-13%	-7%	0%	2%

I.5.25 Applications by domicile and tariff group of provider : All domiciles

Difference between cycle and 2014 cycle

- 1. Lower tariff
- 2. Medium tariff
- 3. Higher tariff



I.5.26 Applications by domicile and tariff group of provider : All domiciles

Domicile of applicant and tariff group of provider		2011	2012	2013	2014	2015
All domiciles	1. Lower tariff	1,062,850	961,740	961,740	995,890	986,390
	2. Medium tariff	890,480	809,720	841,810	881,730	907,240
	3. Higher tariff	894,480	865,500	908,820	947,450	998,030
	All	2,847,810	2,636,960	2,712,360	2,825,070	2,891,650

I.5.27 Applications by domicile and tariff group of provider : All domiciles

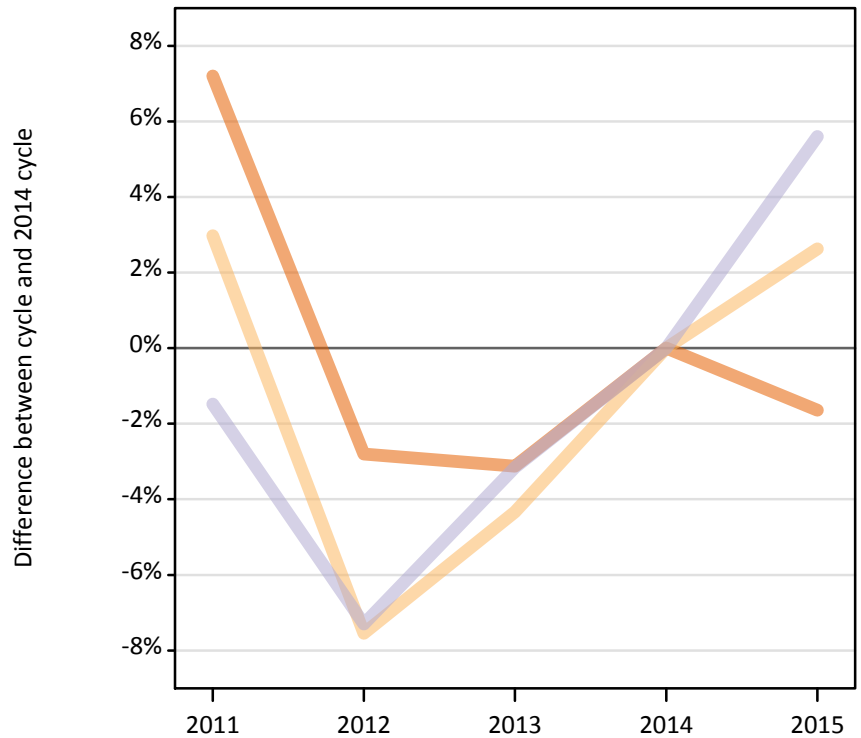
Difference between cycle and 2014 cycle

Domicile of applicant and tariff group of provider		2011	2012	2013	2014	2015
All domiciles	1. Lower tariff	7%	-3%	-3%	0%	-1%
	2. Medium tariff	1%	-8%	-5%	0%	3%
	3. Higher tariff	-6%	-9%	-4%	0%	5%
	All	1%	-7%	-4%	0%	2%

I.5.28 Applications by domicile and tariff group of provider : UK

Difference between cycle and 2014 cycle

- 1. Lower tariff
- 2. Medium tariff
- 3. Higher tariff



I.5.29 Applications by domicile and tariff group of provider : UK

Domicile of applicant and tariff group of provider		2011	2012	2013	2014	2015
UK	1. Lower tariff	968,840	878,410	875,470	903,720	888,890
	2. Medium tariff	765,410	687,210	711,090	743,320	762,860
	3. Higher tariff	667,960	628,510	656,630	678,020	715,970
	All	2,402,210	2,194,130	2,243,190	2,325,050	2,367,720

I.5.30 Applications by domicile and tariff group of provider : UK

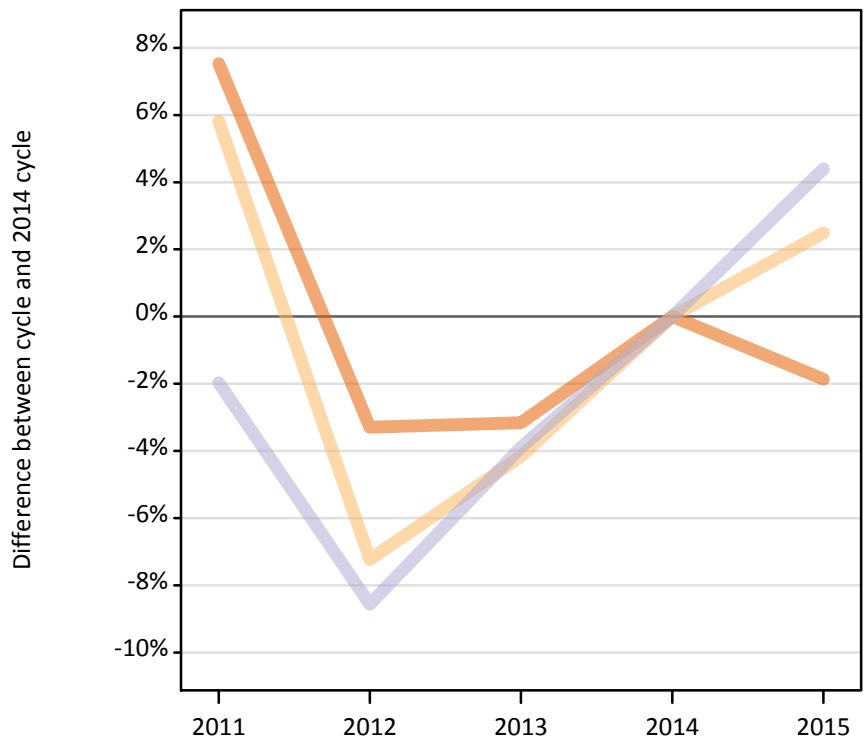
Difference between cycle and 2014 cycle

Domicile of applicant and tariff group of provider		2011	2012	2013	2014	2015
UK	1. Lower tariff	7%	-3%	-3%	0%	-2%
	2. Medium tariff	3%	-8%	-4%	0%	3%
	3. Higher tariff	-1%	-7%	-3%	0%	6%
	All	3%	-6%	-4%	0%	2%

I.5.31 Applications by domicile and tariff group of provider : England

Difference between cycle and 2014 cycle

- 1. Lower tariff
- 2. Medium tariff
- 3. Higher tariff



I.5.32 Applications by domicile and tariff group of provider : England

Domicile of applicant and tariff group of provider		2011	2012	2013	2014	2015
England	1. Lower tariff	879,780	791,220	792,340	818,170	802,900
	2. Medium tariff	625,620	548,500	566,640	591,240	605,980
	3. Higher tariff	538,150	501,930	527,590	548,950	573,100
	All	2,043,550	1,841,650	1,886,570	1,958,350	1,981,970

I.5.33 Applications by domicile and tariff group of provider : England

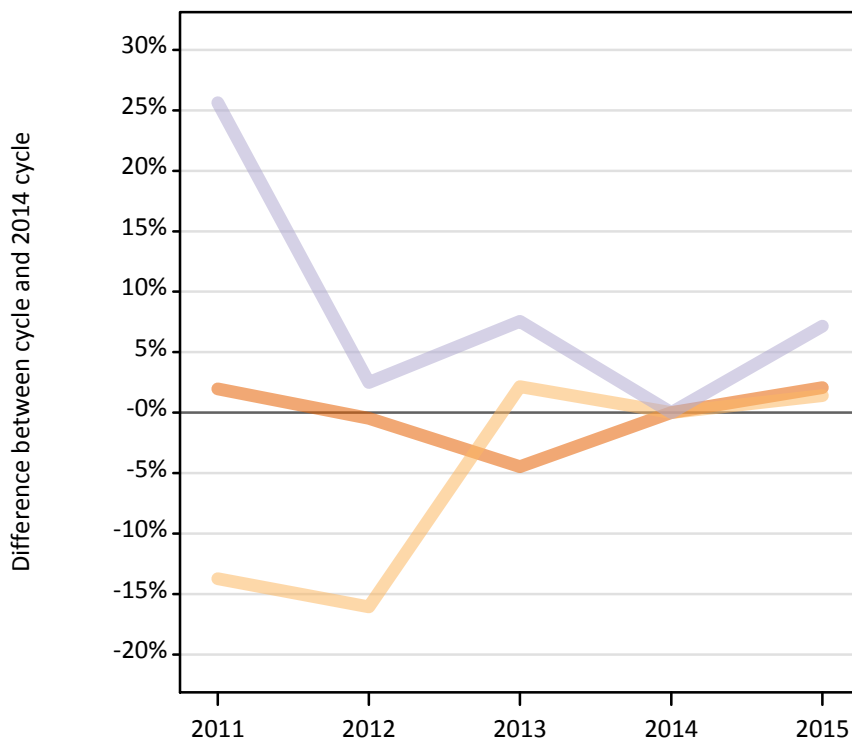
Difference between cycle and 2014 cycle

Domicile of applicant and tariff group of provider		2011	2012	2013	2014	2015
England	1. Lower tariff	8%	-3%	-3%	0%	-2%
	2. Medium tariff	6%	-7%	-4%	0%	2%
	3. Higher tariff	-2%	-9%	-4%	0%	4%
	All	4%	-6%	-4%	0%	1%

I.5.34 Applications by domicile and tariff group of provider : Northern Ireland

Difference between cycle and 2014 cycle

- 1. Lower tariff
- 2. Medium tariff
- 3. Higher tariff



I.5.35 Applications by domicile and tariff group of provider : Northern Ireland

Domicile of applicant and tariff group of provider		2011	2012	2013	2014	2015
Northern Ireland	1. Lower tariff	45,160	44,080	42,320	44,290	45,210
	2. Medium tariff	29,440	28,650	34,870	34,130	34,620
	3. Higher tariff	16,290	13,290	13,950	12,970	13,890
	All	90,890	86,010	91,130	91,390	93,720

I.5.36 Applications by domicile and tariff group of provider : Northern Ireland

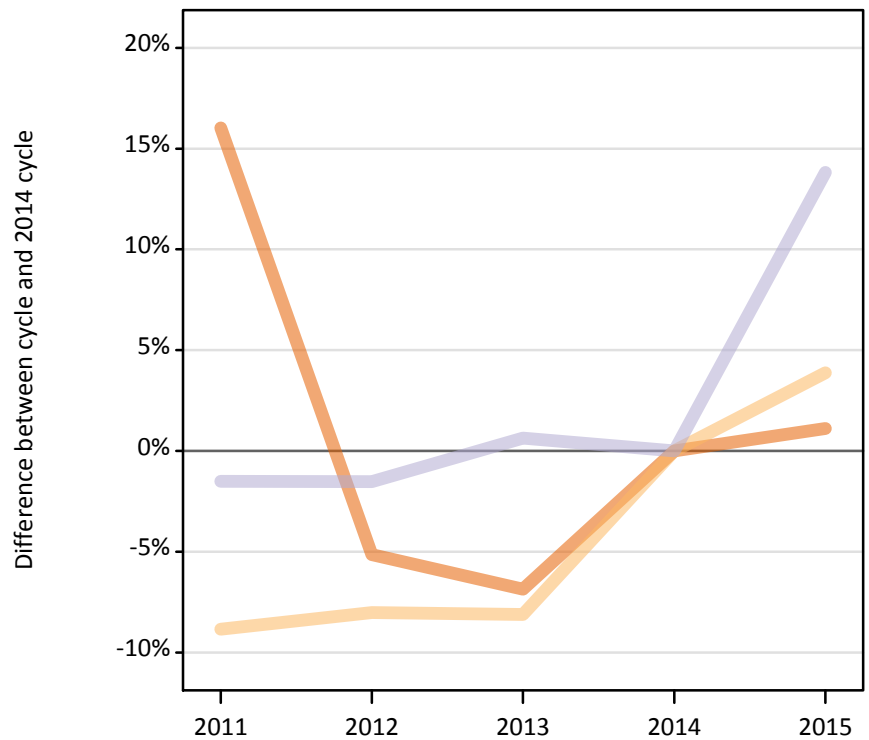
Difference between cycle and 2014 cycle

Domicile of applicant and tariff group of provider		2011	2012	2013	2014	2015
Northern Ireland	1. Lower tariff	2%	-0%	-4%	0%	2%
	2. Medium tariff	-14%	-16%	2%	0%	1%
	3. Higher tariff	26%	2%	8%	0%	7%
	All	-1%	-6%	-0%	0%	3%

I.5.37 Applications by domicile and tariff group of provider : Scotland

Difference between cycle and 2014 cycle

- 1. Lower tariff
- 2. Medium tariff
- 3. Higher tariff



I.5.38 Applications by domicile and tariff group of provider : Scotland

Domicile of applicant and tariff group of provider		2011	2012	2013	2014	2015
Scotland	1. Lower tariff	3,320	2,710	2,660	2,860	2,890
	2. Medium tariff	80,470	81,200	81,120	88,280	91,700
	3. Higher tariff	88,000	87,980	89,920	89,350	101,690
	All	171,790	171,890	173,690	180,490	196,280

I.5.39 Applications by domicile and tariff group of provider : Scotland

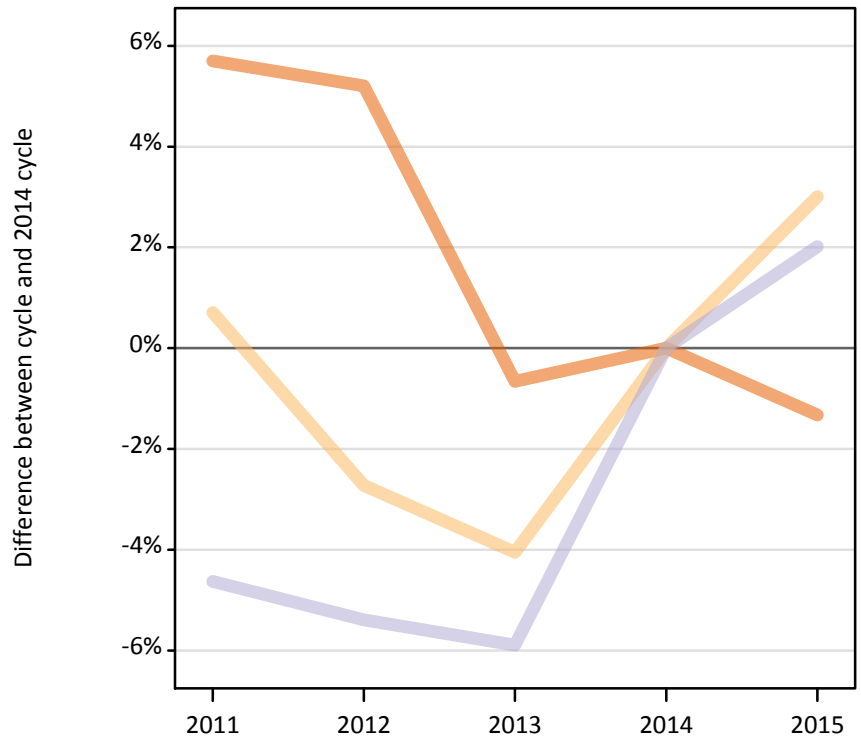
Difference between cycle and 2014 cycle

Domicile of applicant and tariff group of provider		2011	2012	2013	2014	2015
Scotland	1. Lower tariff	16%	-5%	-7%	0%	1%
	2. Medium tariff	-9%	-8%	-8%	0%	4%
	3. Higher tariff	-2%	-2%	1%	0%	14%
	All	-5%	-5%	-4%	0%	9%

I.5.40 Applications by domicile and tariff group of provider : Wales

Difference between cycle and 2014 cycle

- 1. Lower tariff
- 2. Medium tariff
- 3. Higher tariff



I.5.41 Applications by domicile and tariff group of provider : Wales

Domicile of applicant and tariff group of provider		2011	2012	2013	2014	2015
Wales	1. Lower tariff	40,590	40,400	38,150	38,400	37,890
	2. Medium tariff	29,880	28,860	28,470	29,670	30,560
	3. Higher tariff	25,510	25,310	25,180	26,750	27,290
	All	95,990	94,580	91,790	94,830	95,750

I.5.42 Applications by domicile and tariff group of provider : Wales

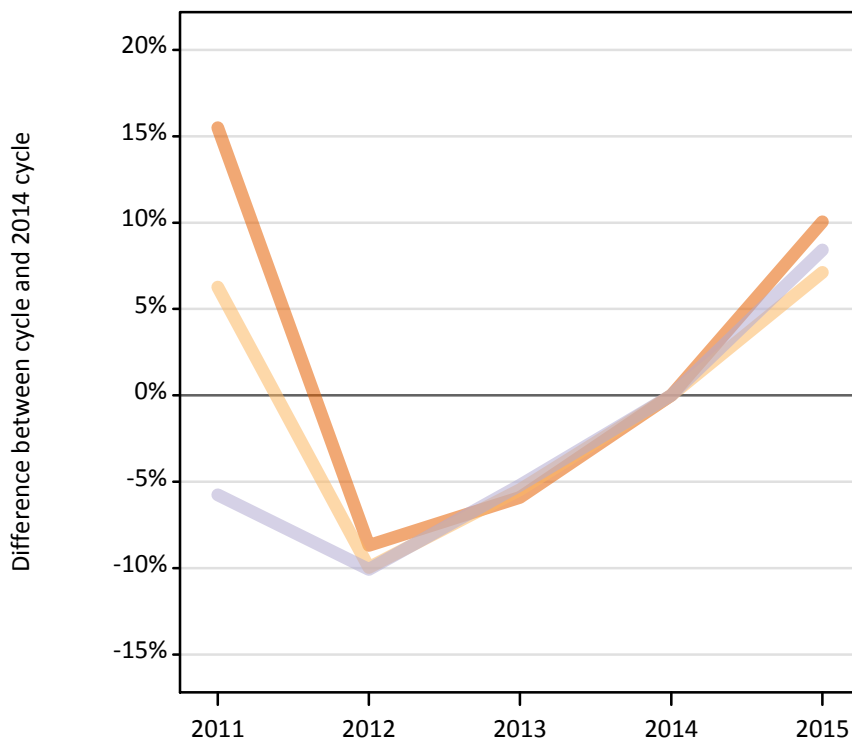
Difference between cycle and 2014 cycle

Domicile of applicant and tariff group of provider		2011	2012	2013	2014	2015
Wales	1. Lower tariff	6%	5%	-1%	0%	-1%
	2. Medium tariff	1%	-3%	-4%	0%	3%
	3. Higher tariff	-5%	-5%	-6%	0%	2%
	All	1%	-0%	-3%	0%	1%

I.5.43 Applications by domicile and tariff group of provider : EU (excluding UK)

Difference between cycle and 2014 cycle

- 1. Lower tariff
- 2. Medium tariff
- 3. Higher tariff



I.5.44 Applications by domicile and tariff group of provider : EU (excluding UK)

Domicile of applicant and tariff group of provider		2011	2012	2013	2014	2015
EU (excluding UK)	1. Lower tariff	56,200	44,440	45,790	48,660	53,550
	2. Medium tariff	59,380	50,310	52,820	55,880	59,860
	3. Higher tariff	87,850	83,830	88,370	93,230	101,070
	All	203,430	178,580	186,980	197,770	214,490

I.5.45 Applications by domicile and tariff group of provider : EU (excluding UK)

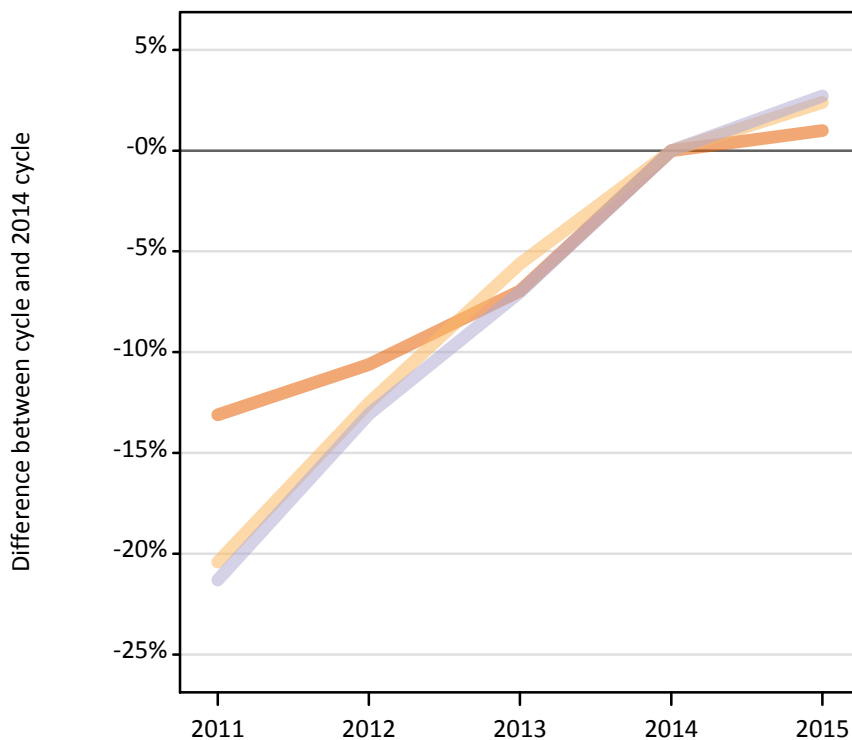
Difference between cycle and 2014 cycle

Domicile of applicant and tariff group of provider		2011	2012	2013	2014	2015
EU (excluding UK)	1. Lower tariff	15%	-9%	-6%	0%	10%
	2. Medium tariff	6%	-10%	-5%	0%	7%
	3. Higher tariff	-6%	-10%	-5%	0%	8%
	All	3%	-10%	-5%	0%	8%

I.5.46 Applications by domicile and tariff group of provider : Not EU

Difference between cycle and 2014 cycle

- 1. Lower tariff
- 2. Medium tariff
- 3. Higher tariff



I.5.47 Applications by domicile and tariff group of provider : Not EU

Domicile of applicant and tariff group of provider		2011	2012	2013	2014	2015
Not EU	1. Lower tariff	37,800	38,890	40,480	43,510	43,940
	2. Medium tariff	65,690	72,200	77,900	82,530	84,510
	3. Higher tariff	138,670	153,160	163,810	176,200	180,990
	All	242,160	264,250	282,190	302,240	309,440

I.5.48 Applications by domicile and tariff group of provider : Not EU

Difference between cycle and 2014 cycle

Domicile of applicant and tariff group of provider		2011	2012	2013	2014	2015
Not EU	1. Lower tariff	-13%	-11%	-7%	0%	1%
	2. Medium tariff	-20%	-13%	-6%	0%	2%
	3. Higher tariff	-21%	-13%	-7%	0%	3%
	All	-20%	-13%	-7%	0%	2%

I.5.49 Technical notes and definitions

Applicants have been able to submit applications for all 2015 courses since early September.

People who submit their applications to UCAS by the January deadline are considered 'on time' applicants for the large majority of courses offered through UCAS. Some art and design courses have a later deadline of 24 March. By definition all main scheme applications have been received by the 30 June deadline.

In 2015, a set of courses relating to teacher training that historically would only have been available through UCAS Teacher Training, and therefore not previously counted in the scope of this statistical release, were brought into the undergraduate UCAS scheme. These additional courses are all offered by providers based in Scotland and are in the JACS3 detailed subject reporting grouping of 'X1 - Training Teachers'.

The large majority of applications to the additional courses are from applicants living in Scotland and the increase indicated in Scottish domiciled applicants during the 2015 cycle is substantially a result of these changes.

To help comparisons through time, additional tables are available on the UCAS website that exclude any applications made by applicants to subject group 'X1' at Scottish providers. These tables provide a better 'like for like' comparison particularly when considering Scottish domiciled applicants and Scottish providers.

Counts of the number of applicants reported have been rounded to the nearest 10 applicants, this may result in instances where totals do not equal the sum of the components. Proportional changes have been rounded to the nearest whole percentage point.

Age

This statistical release uses country-specific age definitions which align with the cut off points for school/college cohorts within the different administrations of the UK. For England and Wales ages are defined on the 31 August, for Northern Ireland on the 1 July and for Scotland on the 28 February the following year. Defining ages in this way matches the assignment of children to school cohorts. For applicants outside of the UK the cohort cut off for England and Wales has been used.

Applicant

A person who has made an application in the UCAS system during the cycle reported (including applications for deferred entry). Records of prior acceptance (RPAs) are excluded.

Application

An application to a course at a provider made by an applicant in the UCAS main scheme. Applicants may make up to five main scheme applications.

Country of provider

An applicant may be counted once for each provider country they have applied to in the main scheme. If an applicant has applied to providers in multiple countries then the applicant is counted once within each country of provider applied to.

This statistical release excludes a small number of applications to a provider based in the EU.

Domicile

Declared area of permanent residence. The Channel Islands and the Isle of Man have been assigned as 'Not EU'.

First time applicant

An applicant that did not apply to the UCAS scheme in the previous cycle.

Main scheme

The main UCAS application scheme through which up to five providers/courses can be applied to. This opens in September and closes to new applications on 30 June the following year.

Reapplicant

An applicant that applied to the UCAS scheme in the previous cycle.

I.5.50 Technical notes and definitions: continued

Subject group

The JACS3 classification used to classify courses into subject groups.

Tariff group of provider

Providers are grouped as higher, medium or lower tariff based on their average levels of attainment of their accepted applicants (summarised through UCAS Tariff points) in recent cycles. Each group of providers accounted for around a third of all UK 18 year old acceptances in recent cycles.