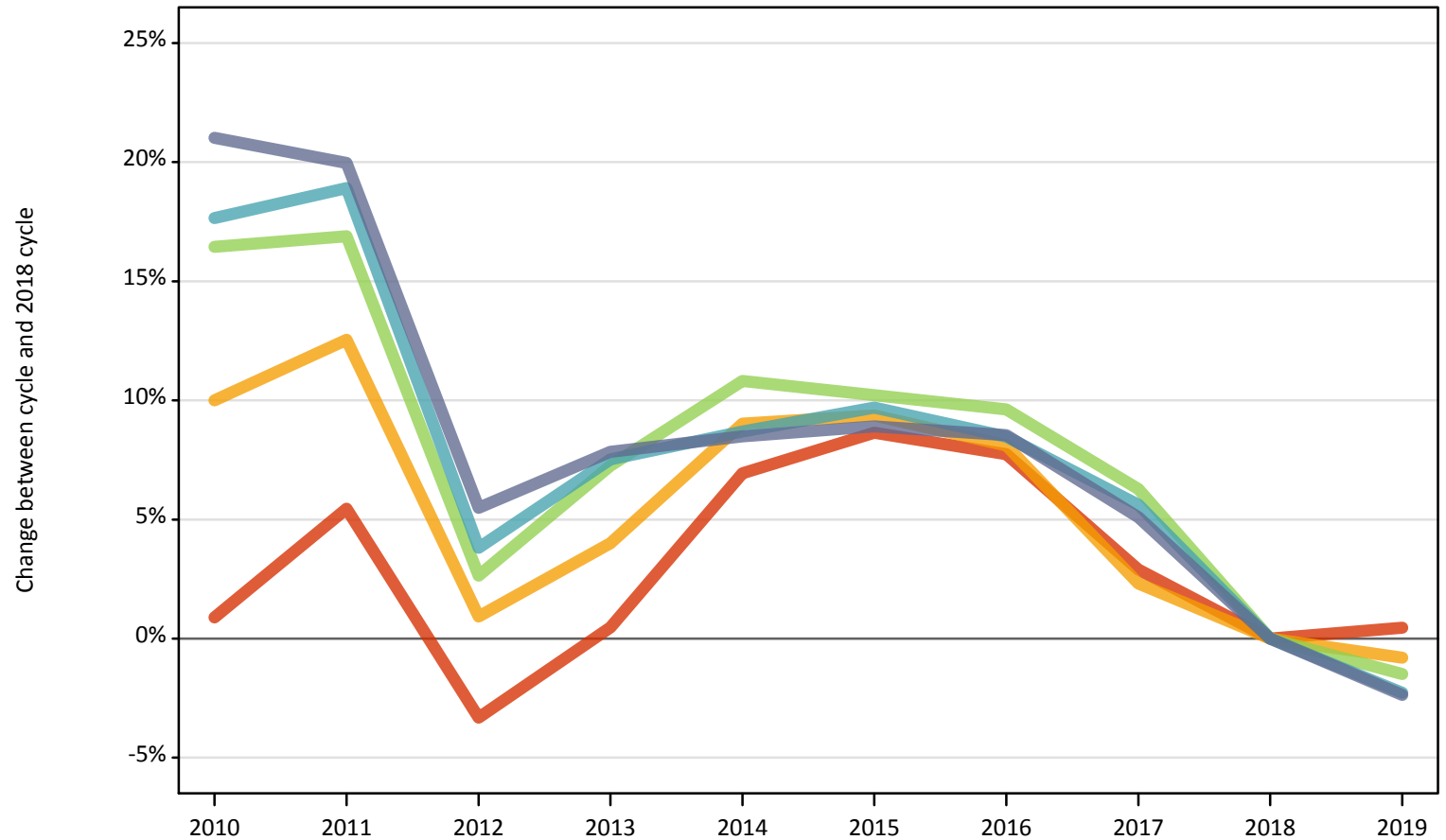


June Deadline Analysis: IMD quintile

Applicants by IMD quintile 2015, age and sex at the 30 June deadline

I.13.1 Applicants by IMD quintile 2015: English domiciled applicants Difference between cycle and 2018 cycle

- Quintile 1
- Quintile 2
- Quintile 3
- Quintile 4
- Quintile 5

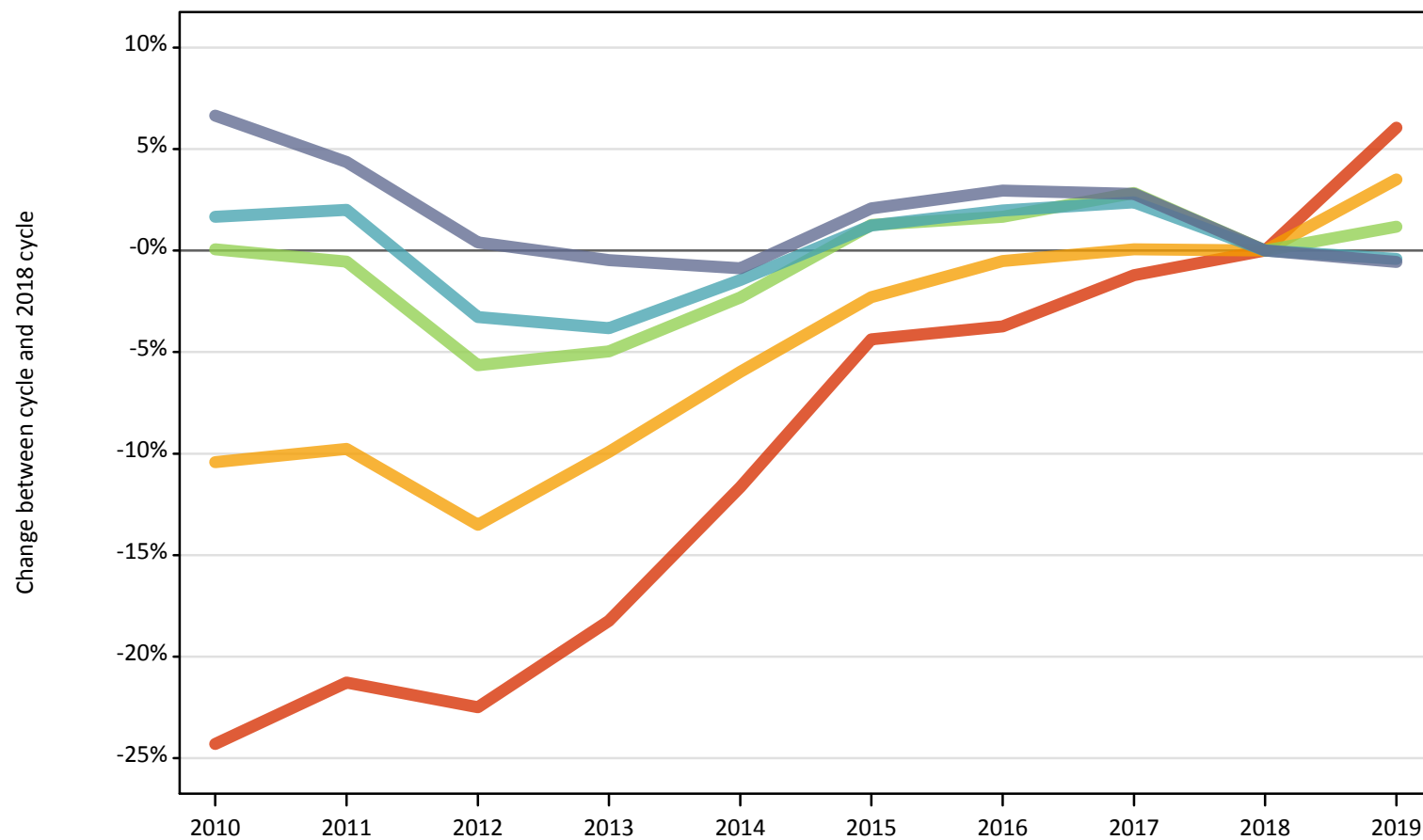


Note: The percentage change is not plotted in the above chart for groups with fewer than 500 applicants in any one cycle.

I.13.2 18 year old applicants by IMD quintile 2015: English domiciled applicants

Difference between cycle and 2018 cycle

- Quintile 1
- Quintile 2
- Quintile 3
- Quintile 4
- Quintile 5



Note: The percentage change is not plotted in the above chart for groups with fewer than 500 applicants in any one cycle.

I.13.3 Applicants by age and IMD quintile 2015: English domiciled applicants

Age group and IMD quintile 2015		2010	2011	2012	2013	2014	2015	2016	2017	2018	2019
Under 18	Quintile 1	200	130	120	120	130	120	120	130	120	100
	Quintile 2	230	210	160	150	180	190	180	170	160	170
	Quintile 3	300	270	190	190	200	220	200	190	180	170
	Quintile 4	350	310	250	230	220	220	250	220	220	200
	Quintile 5	370	300	210	210	220	240	250	180	190	150
18	Quintile 1	27,670	28,780	28,330	29,890	32,300	34,960	35,190	36,110	36,560	38,770
	Quintile 2	34,440	34,690	33,250	34,630	36,150	37,560	38,240	38,470	38,440	39,790
	Quintile 3	42,980	42,710	40,530	40,820	41,960	43,490	43,660	44,170	42,950	43,460
	Quintile 4	51,450	51,630	48,950	48,680	49,880	51,240	51,610	51,810	50,610	50,400
	Quintile 5	67,750	66,300	63,780	63,230	62,970	64,850	65,410	65,300	63,530	63,180
19	Quintile 1	15,610	16,690	15,030	16,300	17,410	17,700	17,910	16,640	16,080	16,030
	Quintile 2	16,210	17,480	14,700	16,210	16,810	17,120	16,920	15,730	14,790	14,590
	Quintile 3	17,480	18,130	14,650	16,620	16,740	17,060	16,860	15,960	14,760	14,030
	Quintile 4	18,950	19,570	15,450	17,670	17,660	17,860	17,500	16,500	15,330	14,520
	Quintile 5	21,840	22,420	16,910	19,770	19,700	19,430	19,450	17,980	16,920	15,880
20-24	Quintile 1	20,050	21,000	18,920	19,370	20,250	19,660	18,950	17,550	16,620	16,120
	Quintile 2	19,340	19,600	17,120	17,090	18,190	17,080	16,250	15,050	14,180	13,370
	Quintile 3	16,810	16,710	14,200	14,440	15,350	14,470	14,060	12,750	12,010	11,420
	Quintile 4	15,820	15,840	13,320	13,620	14,190	13,670	12,760	11,820	10,940	10,590
	Quintile 5	15,260	15,280	12,520	12,850	13,390	12,700	12,250	10,960	10,640	9,830
25-29	Quintile 1	7,530	7,360	6,570	6,580	7,070	6,890	6,730	5,590	5,100	4,890
	Quintile 2	6,710	6,640	5,820	5,790	6,100	5,780	5,750	4,610	4,370	4,170
	Quintile 3	5,200	4,970	4,320	4,410	4,600	4,470	4,360	3,590	3,190	3,130
	Quintile 4	4,250	4,120	3,440	3,560	3,780	3,560	3,520	2,970	2,650	2,600
	Quintile 5	3,290	3,090	2,720	2,960	2,860	2,780	2,760	2,270	2,020	1,940
30-34	Quintile 1	4,840	4,990	4,550	4,390	4,560	4,240	4,280	3,390	3,230	3,040
	Quintile 2	4,030	4,030	3,630	3,550	3,590	3,480	3,380	2,810	2,500	2,390
	Quintile 3	2,870	2,870	2,470	2,480	2,650	2,530	2,350	1,980	1,840	1,840
	Quintile 4	2,180	2,210	1,940	1,940	1,960	1,830	1,880	1,470	1,390	1,330
	Quintile 5	1,640	1,610	1,370	1,380	1,370	1,330	1,290	1,060	940	940

Age group and IMD quintile 2015		2010	2011	2012	2013	2014	2015	2016	2017	2018	2019
35 and over	Quintile 1	7,430	7,630	6,980	6,710	7,310	7,380	7,840	6,470	5,980	5,990
	Quintile 2	6,190	6,120	5,510	5,290	5,970	5,900	6,240	4,970	4,690	4,680
	Quintile 3	4,940	4,700	4,100	3,980	4,270	4,160	4,360	3,430	3,280	3,160
	Quintile 4	4,270	3,950	3,370	3,200	3,410	3,330	3,310	2,750	2,480	2,410
	Quintile 5	3,670	3,290	2,650	2,610	2,700	2,490	2,560	2,130	1,920	1,830
All ages	Quintile 1	83,340	86,580	80,500	83,350	89,030	90,940	91,010	85,890	83,680	84,940
	Quintile 2	87,140	88,760	80,190	82,700	86,970	87,110	86,950	81,800	79,120	79,160
	Quintile 3	90,570	90,350	80,450	82,930	85,780	86,390	85,850	82,050	78,210	77,190
	Quintile 4	97,270	97,620	86,720	88,900	91,100	91,710	90,830	87,540	83,620	82,050
	Quintile 5	113,820	112,280	100,170	103,010	103,210	103,820	103,960	99,880	96,160	93,740

I.13.4 Applicants by age and IMD quintile 2015: English domiciled applicants

Difference between cycle and 2018 cycle

Age group and IMD quintile 2015		2010	2011	2012	2013	2014	2015	2016	2017	2018	2019
Under 18	Quintile 1	69%	9%	2%	1%	12%	3%	-1%	12%	0%	-10%
	Quintile 2	45%	36%	1%	-8%	13%	22%	11%	7%	0%	9%
	Quintile 3	69%	50%	4%	8%	13%	24%	9%	6%	0%	-8%
	Quintile 4	57%	39%	9%	3%	-1%	0%	13%	-1%	0%	-11%
	Quintile 5	97%	58%	14%	12%	17%	26%	34%	-3%	0%	-22%
18	Quintile 1	-24%	-21%	-22%	-18%	-12%	-4%	-4%	-1%	0%	6%
	Quintile 2	-10%	-10%	-14%	-10%	-6%	-2%	-1%	0%	0%	3%
	Quintile 3	0%	-1%	-6%	-5%	-2%	1%	2%	3%	0%	1%
	Quintile 4	2%	2%	-3%	-4%	-1%	1%	2%	2%	0%	-0%
	Quintile 5	7%	4%	0%	-0%	-1%	2%	3%	3%	0%	-1%
19	Quintile 1	-3%	4%	-7%	1%	8%	10%	11%	3%	0%	-0%
	Quintile 2	10%	18%	-1%	10%	14%	16%	14%	6%	0%	-1%
	Quintile 3	18%	23%	-1%	13%	13%	16%	14%	8%	0%	-5%
	Quintile 4	24%	28%	1%	15%	15%	17%	14%	8%	0%	-5%
	Quintile 5	29%	32%	-0%	17%	16%	15%	15%	6%	0%	-6%
20-24	Quintile 1	21%	26%	14%	17%	22%	18%	14%	6%	0%	-3%
	Quintile 2	36%	38%	21%	21%	28%	20%	15%	6%	0%	-6%
	Quintile 3	40%	39%	18%	20%	28%	20%	17%	6%	0%	-5%
	Quintile 4	45%	45%	22%	25%	30%	25%	17%	8%	0%	-3%
	Quintile 5	43%	44%	18%	21%	26%	19%	15%	3%	0%	-8%
25-29	Quintile 1	48%	44%	29%	29%	39%	35%	32%	10%	0%	-4%
	Quintile 2	54%	52%	33%	32%	40%	32%	31%	5%	0%	-5%
	Quintile 3	63%	56%	35%	38%	44%	40%	37%	12%	0%	-2%
	Quintile 4	60%	55%	30%	34%	43%	34%	33%	12%	0%	-2%
	Quintile 5	62%	53%	35%	46%	41%	37%	36%	12%	0%	-4%
30-34	Quintile 1	50%	55%	41%	36%	41%	31%	33%	5%	0%	-6%
	Quintile 2	61%	61%	45%	42%	44%	39%	35%	12%	0%	-4%
	Quintile 3	56%	56%	34%	35%	44%	37%	28%	8%	0%	-0%
	Quintile 4	56%	59%	40%	39%	40%	32%	35%	6%	0%	-4%
	Quintile 5	74%	71%	46%	46%	45%	41%	37%	12%	0%	-0%

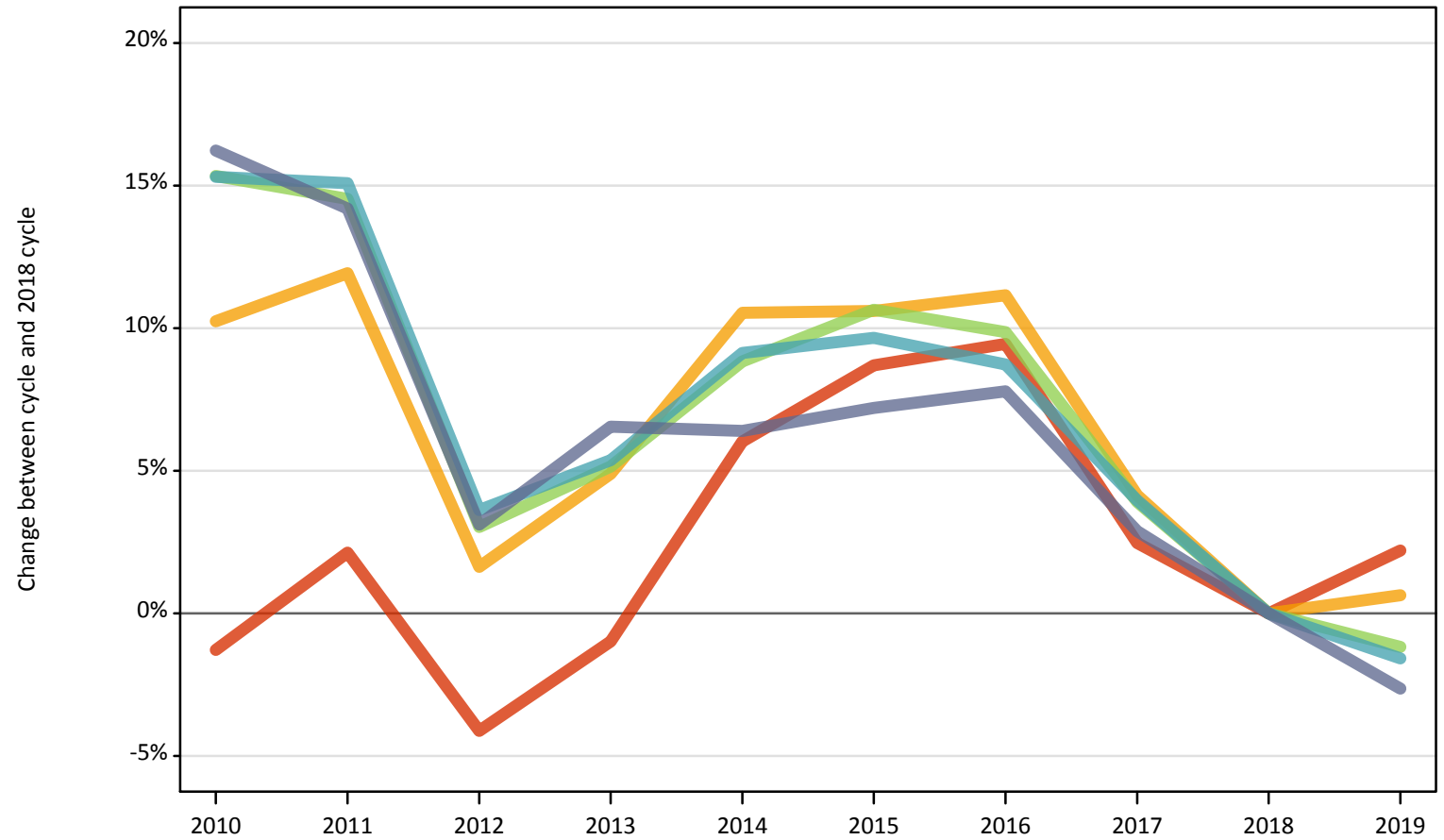
Age group and IMD quintile 2015		2010	2011	2012	2013	2014	2015	2016	2017	2018	2019
35 and over	Quintile 1	24%	28%	17%	12%	22%	23%	31%	8%	0%	0%
	Quintile 2	32%	31%	17%	13%	27%	26%	33%	6%	0%	-0%
	Quintile 3	50%	43%	25%	21%	30%	27%	33%	4%	0%	-4%
	Quintile 4	72%	59%	36%	29%	37%	34%	33%	11%	0%	-3%
	Quintile 5	91%	72%	38%	36%	41%	30%	34%	11%	0%	-4%
All ages	Quintile 1	-0%	3%	-4%	-0%	6%	9%	9%	3%	0%	2%
	Quintile 2	10%	12%	1%	5%	10%	10%	10%	3%	0%	0%
	Quintile 3	16%	16%	3%	6%	10%	10%	10%	5%	0%	-1%
	Quintile 4	16%	17%	4%	6%	9%	10%	9%	5%	0%	-2%
	Quintile 5	18%	17%	4%	7%	7%	8%	8%	4%	0%	-3%

Note: The percentage change is not recorded in the above table for groups with fewer than 10 applicants in that cycle or in the 2018 cycle.

I.13.5 Applicants by IMD quintile 2015: English domiciled applicants (Women)

Difference between cycle and 2018 cycle

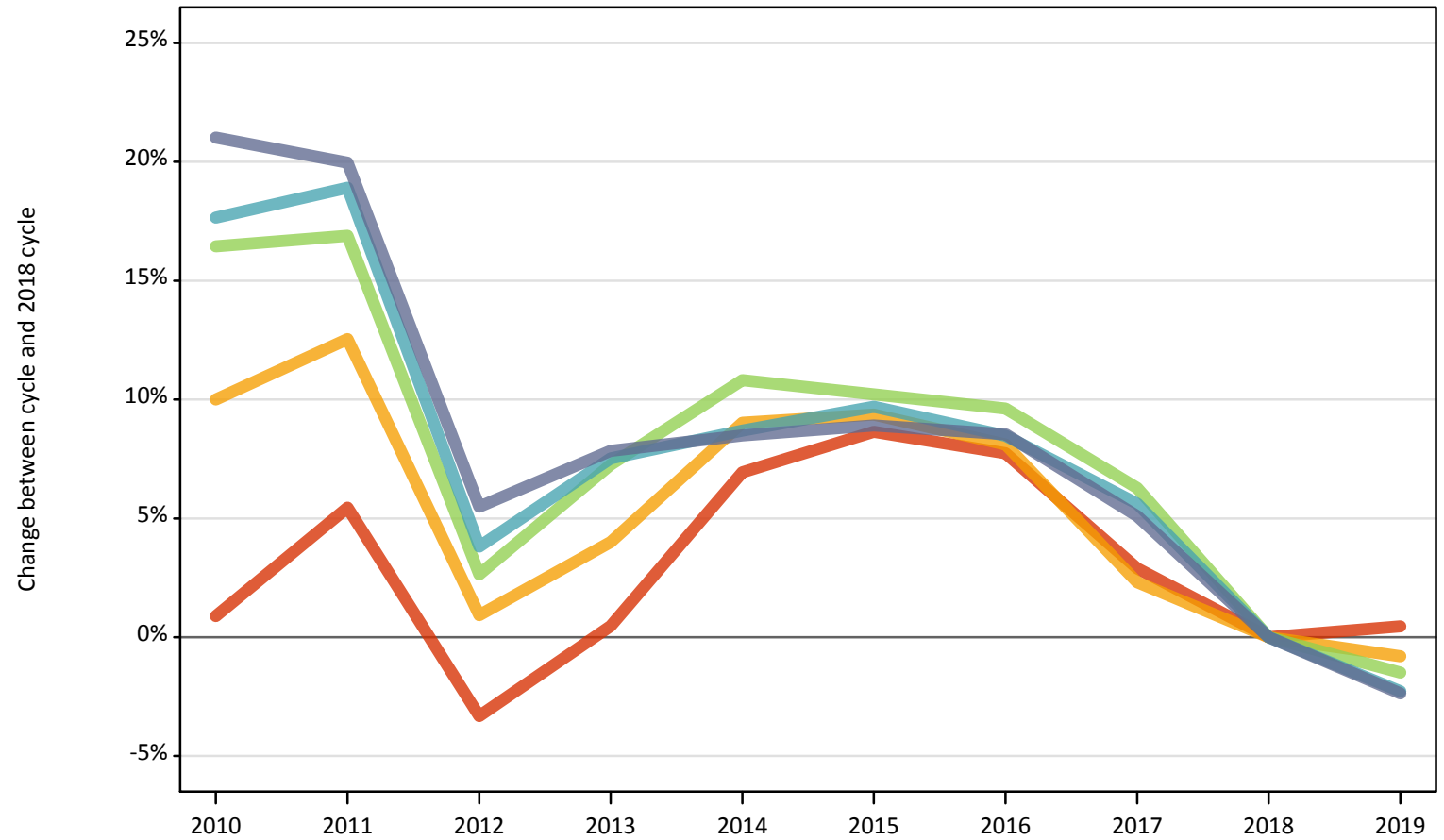
- Quintile 1
- Quintile 2
- Quintile 3
- Quintile 4
- Quintile 5



Note: The percentage change is not plotted in the above chart for groups with fewer than 500 applicants in any one cycle.

I.13.6 Applicants by IMD quintile 2015: English domiciled applicants (Men)
Difference between cycle and 2018 cycle

- Quintile 1
- Quintile 2
- Quintile 3
- Quintile 4
- Quintile 5



Note: The percentage change is not plotted in the above chart for groups with fewer than 500 applicants in any one cycle.

I.13.7 Applicants by sex and IMD quintile 2015: English domiciled applicants

Sex and IMD quintile 2015		2010	2011	2012	2013	2014	2015	2016	2017	2018	2019
Women	Quintile 1	49,440	51,140	48,010	49,580	53,090	54,430	54,810	51,310	50,070	51,180
	Quintile 2	51,310	52,100	47,310	48,820	51,450	51,480	51,740	48,480	46,550	46,840
	Quintile 3	52,300	51,930	46,720	47,680	49,350	50,170	49,810	47,120	45,340	44,810
	Quintile 4	54,710	54,610	49,170	50,000	51,780	52,030	51,590	49,330	47,450	46,700
	Quintile 5	61,900	60,820	54,920	56,750	56,670	57,100	57,410	54,800	53,260	51,860
Men	Quintile 1	33,900	35,440	32,490	33,760	35,940	36,510	36,210	34,580	33,610	33,760
	Quintile 2	35,830	36,660	32,880	33,880	35,510	35,620	35,210	33,330	32,570	32,310
	Quintile 3	38,280	38,420	33,740	35,260	36,430	36,230	36,030	34,940	32,870	32,380
	Quintile 4	42,560	43,010	37,550	38,900	39,320	39,680	39,240	38,210	36,170	35,350
	Quintile 5	51,910	51,460	45,250	46,260	46,540	46,720	46,560	45,080	42,900	41,880

I.13.8 Applicants by sex and IMD quintile 2015: English domiciled applicants

Difference between cycle and 2018 cycle

Sex and IMD quintile 2015		2010	2011	2012	2013	2014	2015	2016	2017	2018	2019
Women	Quintile 1	-1%	2%	-4%	-1%	6%	9%	9%	2%	0%	2%
	Quintile 2	10%	12%	2%	5%	11%	11%	11%	4%	0%	1%
	Quintile 3	15%	15%	3%	5%	9%	11%	10%	4%	0%	-1%
	Quintile 4	15%	15%	4%	5%	9%	10%	9%	4%	0%	-2%
	Quintile 5	16%	14%	3%	7%	6%	7%	8%	3%	0%	-3%
Men	Quintile 1	1%	5%	-3%	0%	7%	9%	8%	3%	0%	0%
	Quintile 2	10%	13%	1%	4%	9%	9%	8%	2%	0%	-1%
	Quintile 3	16%	17%	3%	7%	11%	10%	10%	6%	0%	-1%
	Quintile 4	18%	19%	4%	8%	9%	10%	8%	6%	0%	-2%
	Quintile 5	21%	20%	5%	8%	8%	9%	9%	5%	0%	-2%

Note: The percentage change is not recorded in the above table for groups with fewer than 10 applicants in that cycle or in the 2018 cycle.

I.13.9 Technical notes and definitions

Applicants have been able to submit applications for all 2019 courses since early September.

Applicants who submit their applications to UCAS by the January deadline are considered 'on time' applicants for the large majority of courses offered through UCAS. Some art and design courses have a later deadline of 24 March. By definition all main scheme applications have been received by the 30 June deadline.

Counts of the number of applicants reported have been rounded to the nearest 10 applicants, this may result in instances where totals do not equal the sum of the components. Proportional changes have been rounded to the nearest whole percentage point.

Age

This statistical release uses country-specific age definitions which align with the cut off points for school/college cohorts within the different administrations of the UK. For England and Wales ages are defined on the 31 August, for Northern Ireland on the 1 July and for Scotland on the 28 February the following year. Defining ages in this way matches the assignment of children to school cohorts. For applicants outside of the UK the cohort cut off for England and Wales has been used.

Applicant

A person who has made an application in the UCAS system during the cycle reported (including applications for deferred entry). Records of prior acceptance (RPAs) are excluded.

Application

An application to a course at a provider made by an applicant in the UCAS main scheme. Applicants may make up to five main scheme applications.

Country of provider

An applicant may be counted once for each provider country they have applied to in the main scheme. If an applicant has applied to providers in multiple countries then the applicant is counted once within each country of provider applied to.

Domicile

Declared area of permanent residence. The Channel Islands and the Isle of Man have been assigned as 'Not EU'.

Ethnic group

High level grouping of ethnic origin as declared by the applicant: 'Asian', 'Black', 'Mixed', 'White', 'Other', 'Unknown'.

First time applicant

An applicant that did not apply to the UCAS scheme in the previous cycle.

Main scheme

The main UCAS application scheme through which up to five providers/courses can be applied to. This opens in September and closes to new applications on 30 June the following year.

Reapplicant

An applicant that applied to the UCAS scheme in the previous cycle.

Sex

As declared by the applicant.

IMD 2015

The Index of Multiple Deprivation for 2015 identifies small area concentrations of multiple deprivation across all of England, providing a relative measure of deprivation amongst small areas (data zones). When reporting by IMD 2015, the IMD 2015 is used to group areas in each year in the times series.

NIMDM 2017

The Northern Ireland Multiple Deprivation Measure for 2017 identifies small area concentrations of multiple deprivation across all of Northern Ireland, providing a relative measure of deprivation amongst small areas (data zones). When reporting by NIMDM 2017, the NIMDM 2017 is used to group areas in each year in the times series.

SIMD 2012

The Scottish Index of Multiple Deprivation for 2012 identifies small area concentrations of multiple deprivation across all of Scotland, providing a relative measure of deprivation among small areas (data zones). When reporting by SIMD 2012, the SIMD 2012 is used to group areas in each year in the times series.

SIMD 2016

The Scottish Index of Multiple Deprivation for 2016 identifies small area concentrations of multiple deprivation across all of Scotland, providing a relative measure of deprivation among small areas (data zones). When reporting by SIMD 2016, the SIMD 2016 is used to group areas in each year in the times series.

SIMD 2012/2016

Combination of the SIMD measures created in 2012 and 2016. SIMD 2012 is applied to all years before 2017, and SIMD 2016 is applied to years 2017 and onwards.

WIMD 2014

The Welsh Index of Multiple Deprivation identifies small area concentrations of multiple deprivation across all of Wales, providing a relative measure of deprivation among small areas (data zones). In this report, the WIMD 2014 has been used to group areas in each year in the times series.

POLAR4

Developed by HEFCE and classifies small areas across the UK into five groups, according to their level of young participation in HE. Each of these groups represents around 20 per cent of young people, and is ranked from quintile 1 (areas with the lowest young participation rates, considered as the most disadvantaged) to quintile 5 (highest young participation rates, considered most advantaged).

Tariff Group of provider

Providers are grouped as higher, medium or lower tariff based on their average levels of attainment of their accepted applicants (summarised through UCAS Tariff points) in recent cycles. Each group of providers accounted for around a third of all UK 18 year old acceptances in recent cycles.

Subject group

The JACS3 classification used to classify courses into subject groups. With the introduction of HECoS for the 2019 cycle, new courses that were classified using HECoS instead of JACS have been allocated modelled JACS3 values.

Subject group (HECoS)

The CAH classification used to categorise HECoS course subject codes into subject groups. A course may be associated with up to 5 individual subject codes and their respective percentage weight. For this analysis, application totals for subject groups have been calculated by apportioning course applications as weighted by subject group.