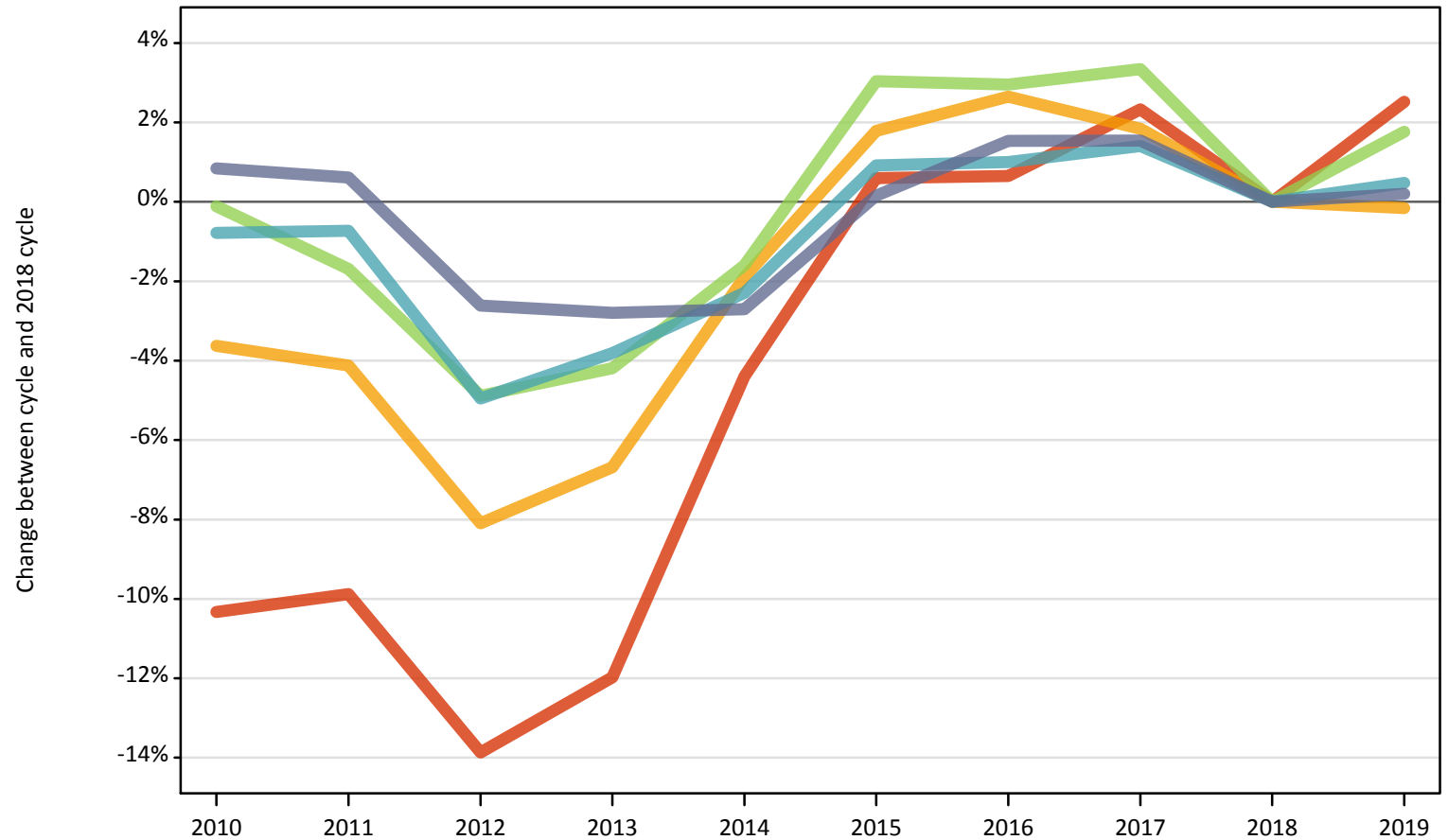


June Deadline Analysis: POLAR4 quintile

18 year old applicants by POLAR4 quintile and sex at the 30 June deadline

I.12.1 18 year old applicants by POLAR4 quintile: UK Difference between cycle and 2018 cycle

- Quintile 1
- Quintile 2
- Quintile 3
- Quintile 4
- Quintile 5



Note: The percentage change is not plotted in the above chart for groups with fewer than 500 applicants in any one cycle.

I.12.2 18 year old applicants by POLAR4 quintile: UK

POLAR4 quintile of applicant		2010	2011	2012	2013	2014	2015	2016	2017	2018	2019
UK	Quintile 1	26,350	26,480	25,310	25,860	28,090	29,560	29,580	30,070	29,380	30,120
	Quintile 2	39,330	39,120	37,500	38,080	40,030	41,540	41,890	41,560	40,810	40,740
	Quintile 3	50,310	49,510	47,910	48,250	49,560	51,890	51,850	52,050	50,360	51,250
	Quintile 4	61,990	62,020	59,380	60,090	61,040	63,050	63,100	63,350	62,470	62,770
	Quintile 5	89,910	89,700	86,820	86,660	86,740	89,290	90,520	90,530	89,150	89,330

I.12.3 18 year old applicants by POLAR4 quintile: UK

Difference between cycle and 2018 cycle

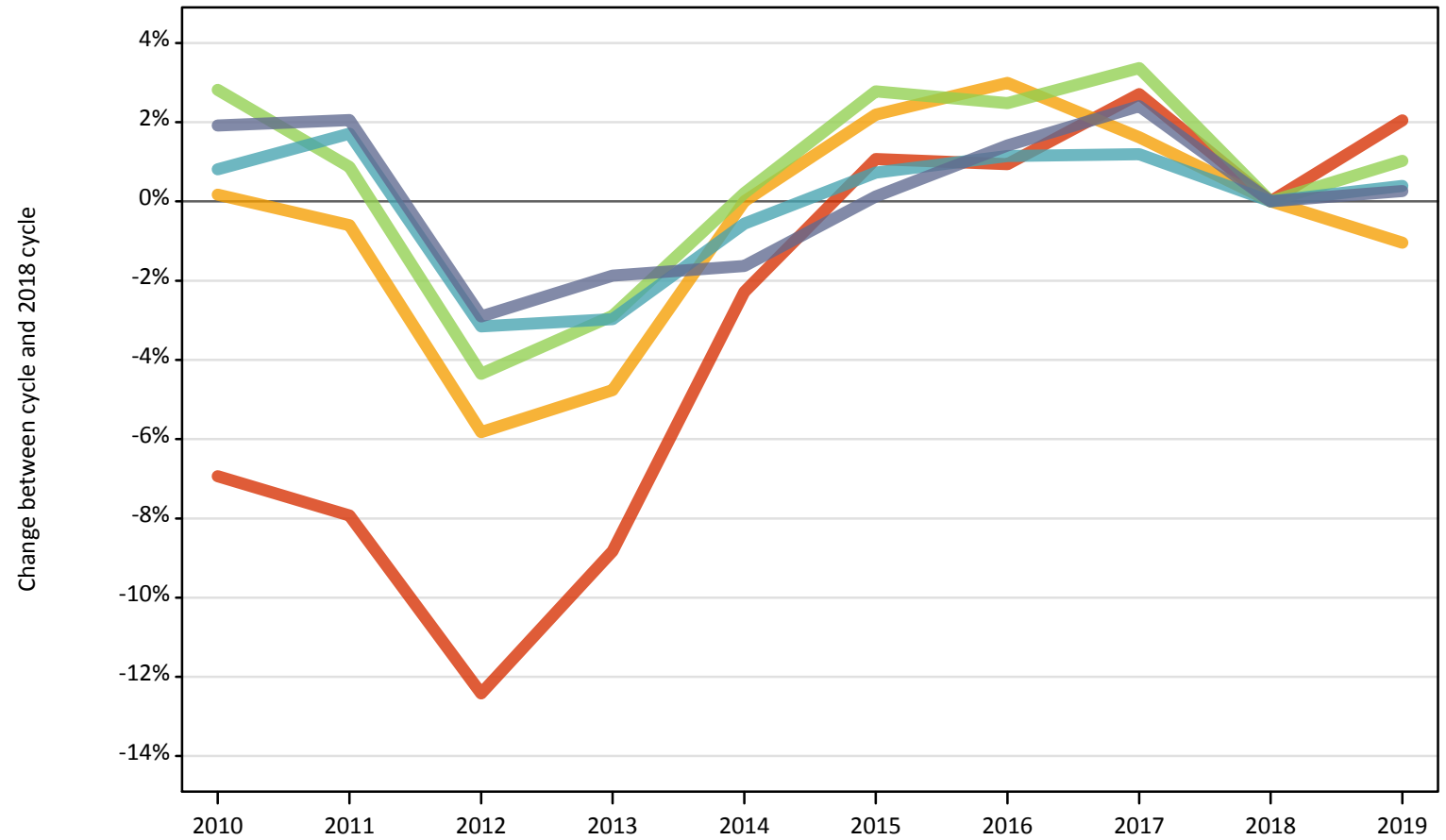
POLAR4 quintile of applicant		2010	2011	2012	2013	2014	2015	2016	2017	2018	2019
UK	Quintile 1	-10%	-10%	-14%	-12%	-4%	1%	1%	2%	0%	3%
	Quintile 2	-4%	-4%	-8%	-7%	-2%	2%	3%	2%	0%	-0%
	Quintile 3	-0%	-2%	-5%	-4%	-2%	3%	3%	3%	0%	2%
	Quintile 4	-1%	-1%	-5%	-4%	-2%	1%	1%	1%	0%	0%
	Quintile 5	1%	1%	-3%	-3%	-3%	0%	2%	2%	0%	0%

Note: The percentage change is not recorded in the above table for groups with fewer than 10 applicants in that cycle or in the 2018 cycle.

I.12.4 18 year old applicants by POLAR4 quintile: UK (Men)

Difference between cycle and 2018 cycle

- Quintile 1
- Quintile 2
- Quintile 3
- Quintile 4
- Quintile 5

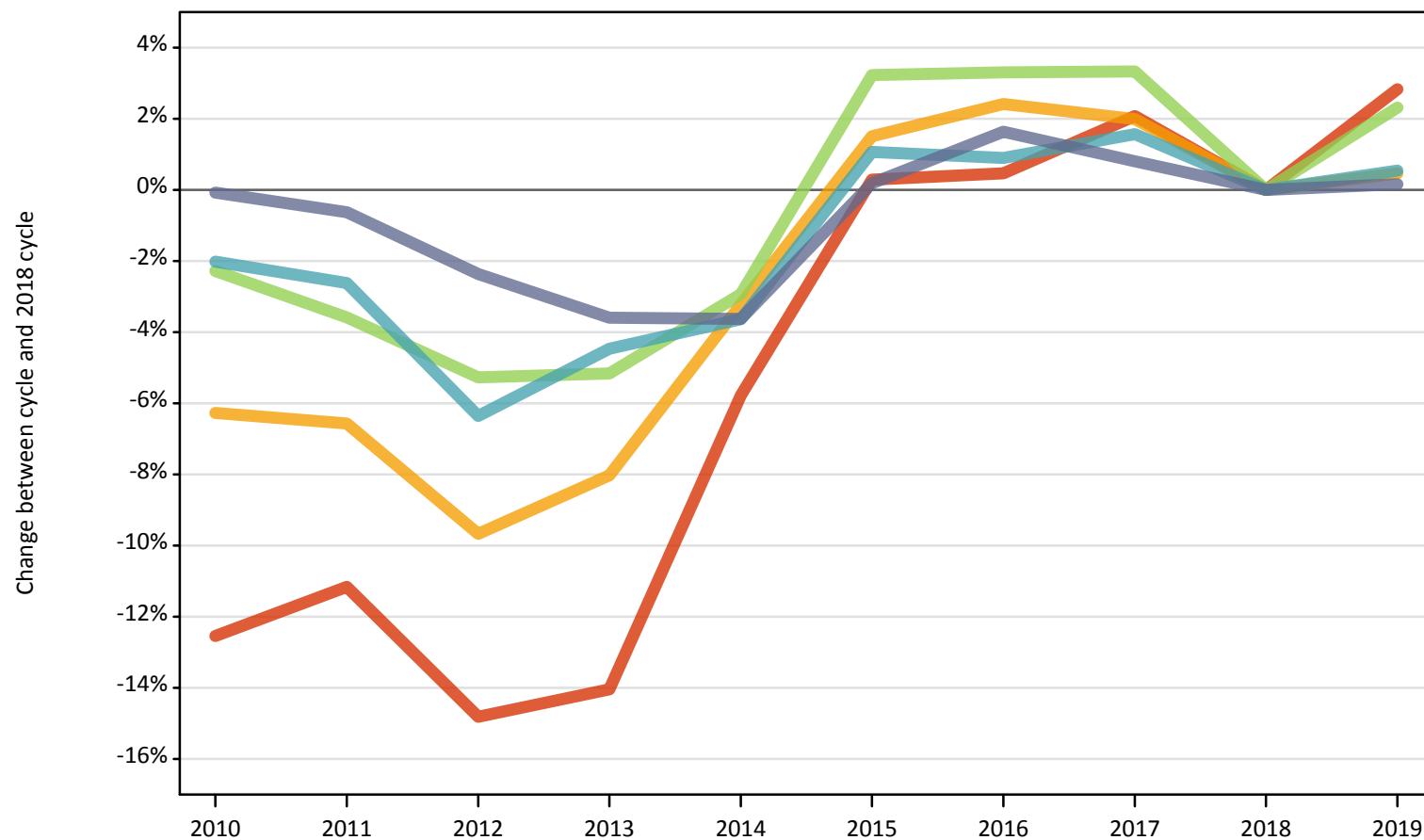


Note: The percentage change is not plotted in the above chart for groups with fewer than 500 applicants in any one cycle.

I.12.5 18 year old applicants by POLAR4 quintile: UK (Women)

Difference between cycle and 2018 cycle

- Quintile 1
- Quintile 2
- Quintile 3
- Quintile 4
- Quintile 5



Note: The percentage change is not plotted in the above chart for groups with fewer than 500 applicants in any one cycle.

I.12.6 18 year old applicants by sex and POLAR4 quintile: UK

Sex and POLAR4 quintile of applicant		2010	2011	2012	2013	2014	2015	2016	2017	2018	2019
Women	Quintile 1	15,540	15,780	15,140	15,270	16,740	17,820	17,850	18,140	17,770	18,270
	Quintile 2	22,570	22,500	21,750	22,150	23,310	24,440	24,660	24,560	24,080	24,190
	Quintile 3	28,310	27,930	27,440	27,480	28,120	29,910	29,930	29,940	28,970	29,640
	Quintile 4	34,460	34,250	32,940	33,600	33,890	35,550	35,480	35,720	35,170	35,360
	Quintile 5	47,850	47,580	46,750	46,170	46,150	47,970	48,670	48,270	47,880	47,960
Men	Quintile 1	10,810	10,700	10,170	10,590	11,350	11,740	11,730	11,930	11,620	11,860
	Quintile 2	16,750	16,620	15,750	15,930	16,730	17,090	17,220	17,000	16,720	16,550
	Quintile 3	22,000	21,580	20,460	20,780	21,440	21,990	21,920	22,110	21,390	21,610
	Quintile 4	27,530	27,770	26,440	26,490	27,150	27,500	27,620	27,630	27,300	27,410
	Quintile 5	42,060	42,120	40,070	40,500	40,600	41,320	41,850	42,260	41,270	41,380

I.12.7 18 year old applicants by sex and POLAR4 quintile: UK

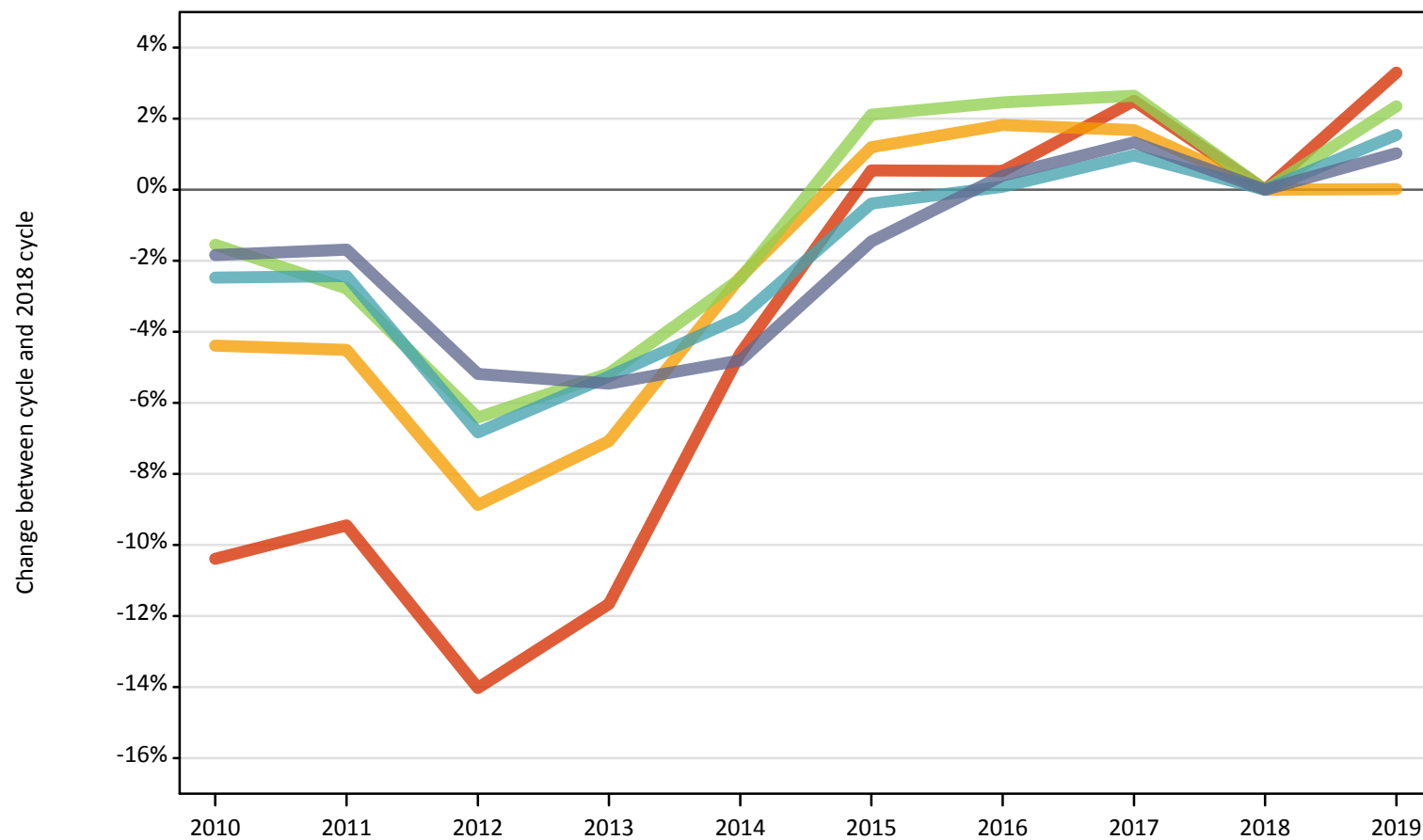
Difference between cycle and 2018 cycle

Sex and POLAR4 quintile of applicant		2010	2011	2012	2013	2014	2015	2016	2017	2018	2019
Women	Quintile 1	-13%	-11%	-15%	-14%	-6%	0%	0%	2%	0%	3%
	Quintile 2	-6%	-7%	-10%	-8%	-3%	2%	2%	2%	0%	0%
	Quintile 3	-2%	-4%	-5%	-5%	-3%	3%	3%	3%	0%	2%
	Quintile 4	-2%	-3%	-6%	-4%	-4%	1%	1%	2%	0%	1%
	Quintile 5	-0%	-1%	-2%	-4%	-4%	0%	2%	1%	0%	0%
Men	Quintile 1	-7%	-8%	-12%	-9%	-2%	1%	1%	3%	0%	2%
	Quintile 2	0%	-1%	-6%	-5%	0%	2%	3%	2%	0%	-1%
	Quintile 3	3%	1%	-4%	-3%	0%	3%	2%	3%	0%	1%
	Quintile 4	1%	2%	-3%	-3%	-1%	1%	1%	1%	0%	0%
	Quintile 5	2%	2%	-3%	-2%	-2%	0%	1%	2%	0%	0%

Note: The percentage change is not recorded in the above table for groups with fewer than 10 applicants in that cycle or in the 2018 cycle.

I.12.8 18 year old applicants by POLAR4 quintile: England Difference between cycle and 2018 cycle

- Quintile 1
- Quintile 2
- Quintile 3
- Quintile 4
- Quintile 5



Note: The percentage change is not plotted in the above chart for groups with fewer than 500 applicants in any one cycle.

I.12.9 18 year old applicants by POLAR4 quintile: England

POLAR4 quintile of applicant		2010	2011	2012	2013	2014	2015	2016	2017	2018	2019
England	Quintile 1	23,020	23,260	22,080	22,690	24,500	25,820	25,820	26,330	25,680	26,530
	Quintile 2	33,810	33,770	32,230	32,860	34,490	35,790	36,010	35,960	35,370	35,370
	Quintile 3	42,290	41,760	40,200	40,730	41,880	43,860	44,010	44,090	42,960	43,960
	Quintile 4	51,920	51,940	49,600	50,440	51,330	53,030	53,280	53,750	53,240	54,060
	Quintile 5	73,150	73,260	70,660	70,450	70,940	73,430	74,820	75,510	74,520	75,280

I.12.10 18 year old applicants by POLAR4 quintile: England

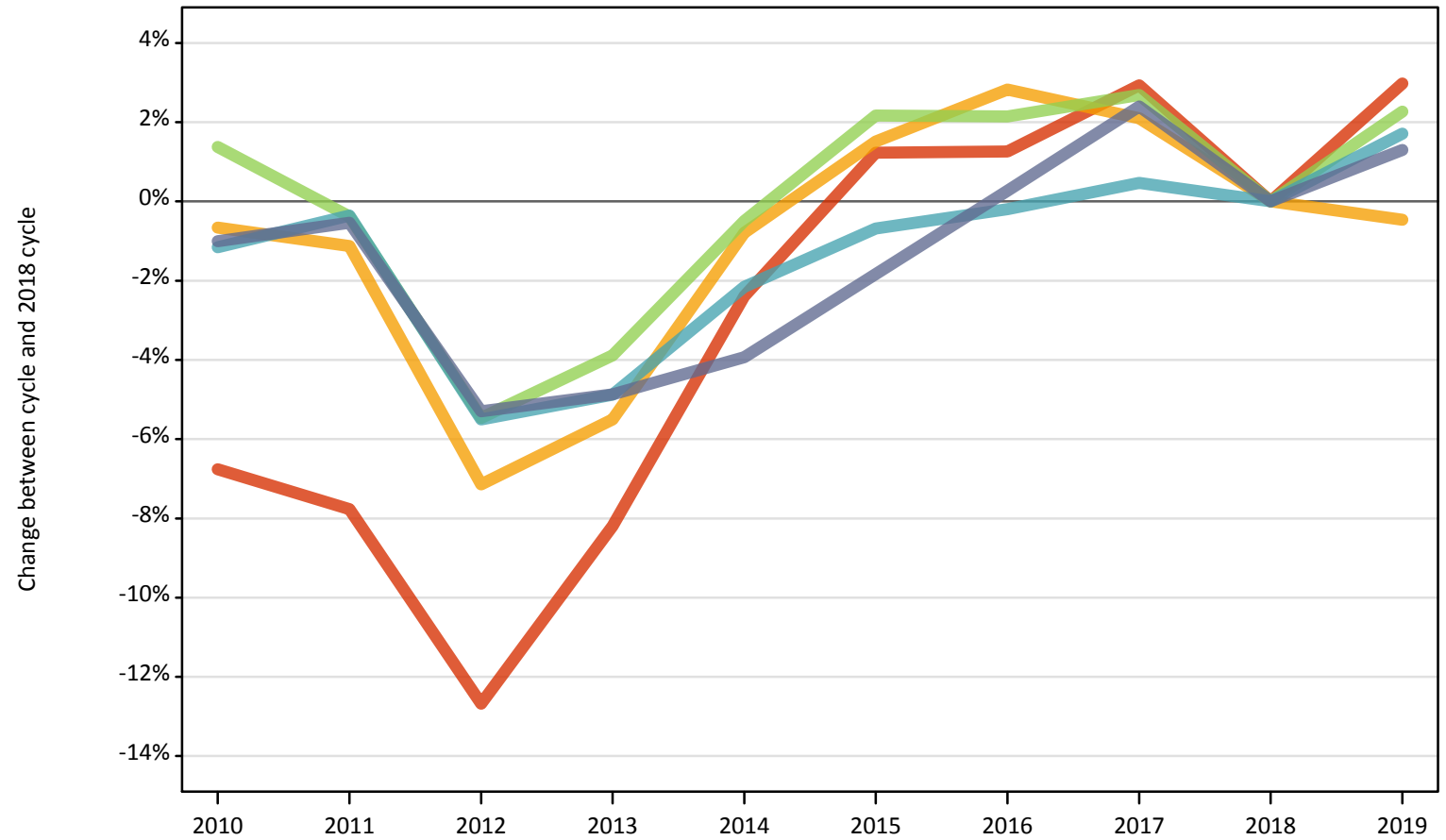
Difference between cycle and 2018 cycle

POLAR4 quintile of applicant		2010	2011	2012	2013	2014	2015	2016	2017	2018	2019
England	Quintile 1	-10%	-9%	-14%	-12%	-5%	1%	1%	2%	0%	3%
	Quintile 2	-4%	-5%	-9%	-7%	-2%	1%	2%	2%	0%	0%
	Quintile 3	-2%	-3%	-6%	-5%	-3%	2%	2%	3%	0%	2%
	Quintile 4	-2%	-2%	-7%	-5%	-4%	-0%	0%	1%	0%	2%
	Quintile 5	-2%	-2%	-5%	-5%	-5%	-1%	0%	1%	0%	1%

Note: The percentage change is not recorded in the above table for groups with fewer than 10 applicants in that cycle or in the 2018 cycle.

I.12.11 18 year old applicants by POLAR4 quintile: England (Men)
Difference between cycle and 2018 cycle

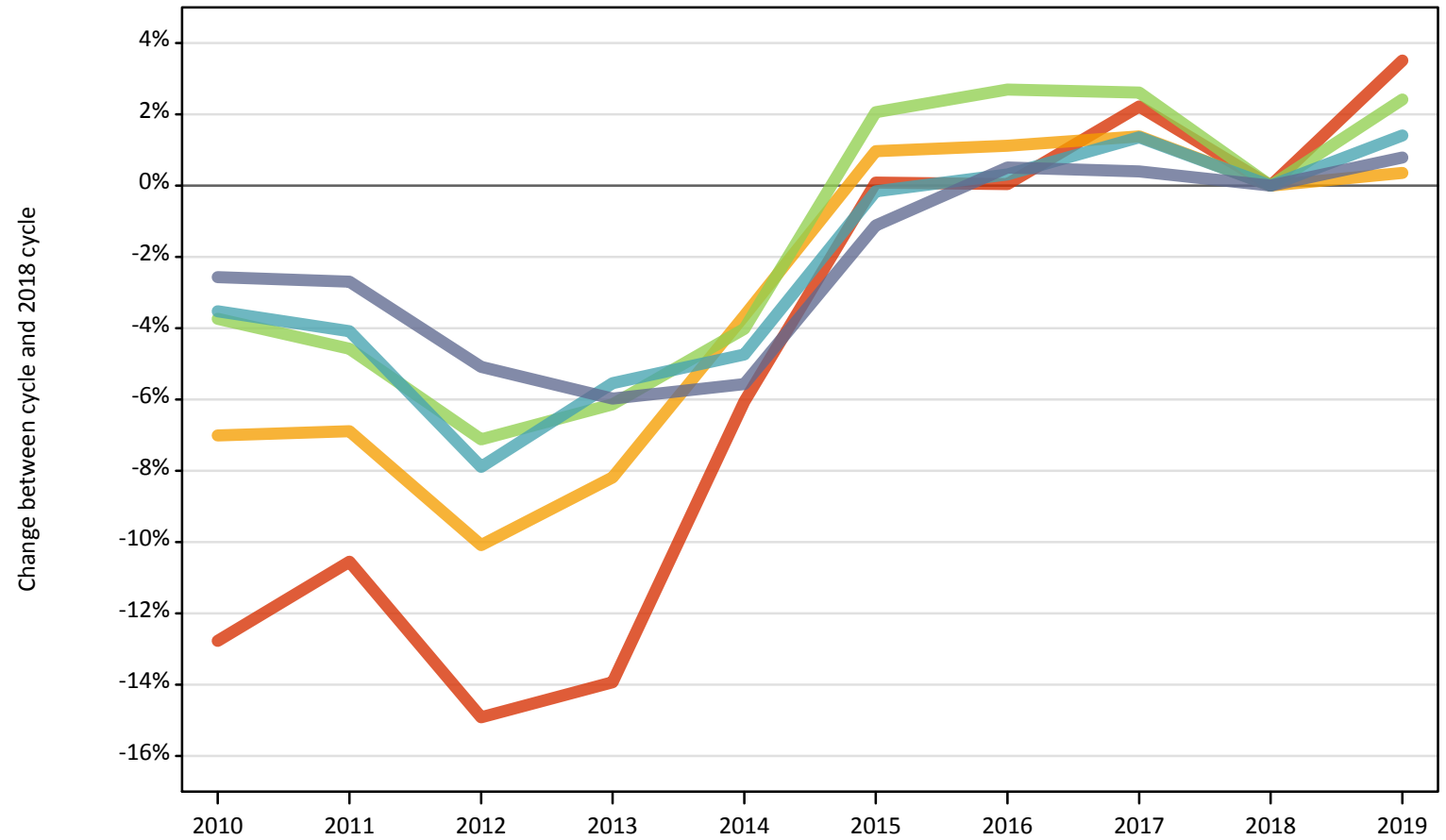
- Quintile 1
- Quintile 2
- Quintile 3
- Quintile 4
- Quintile 5



Note: The percentage change is not plotted in the above chart for groups with fewer than 500 applicants in any one cycle.

I.12.12 18 year old applicants by POLAR4 quintile: England (Women)
Difference between cycle and 2018 cycle

- Quintile 1
- Quintile 2
- Quintile 3
- Quintile 4
- Quintile 5



Note: The percentage change is not plotted in the above chart for groups with fewer than 500 applicants in any one cycle.

I.12.13 18 year old applicants by sex and POLAR4 quintile: England

Sex and POLAR4 quintile of applicant		2010	2011	2012	2013	2014	2015	2016	2017	2018	2019
Women	Quintile 1	13,530	13,870	13,200	13,350	14,570	15,520	15,510	15,850	15,510	16,050
	Quintile 2	19,300	19,320	18,660	19,050	19,990	20,950	20,980	21,040	20,750	20,820
	Quintile 3	23,650	23,450	22,820	23,060	23,580	25,080	25,230	25,210	24,570	25,160
	Quintile 4	28,620	28,460	27,330	28,020	28,260	29,620	29,760	30,070	29,670	30,090
	Quintile 5	38,700	38,650	37,710	37,350	37,510	39,280	39,930	39,880	39,720	40,040
Men	Quintile 1	9,490	9,390	8,890	9,340	9,930	10,300	10,300	10,470	10,180	10,480
	Quintile 2	14,520	14,450	13,570	13,810	14,500	14,840	15,030	14,920	14,620	14,550
	Quintile 3	18,640	18,320	17,380	17,670	18,290	18,780	18,780	18,880	18,390	18,800
	Quintile 4	23,300	23,490	22,270	22,420	23,060	23,410	23,520	23,680	23,570	23,970
	Quintile 5	34,450	34,610	32,950	33,100	33,430	34,160	34,890	35,630	34,800	35,250

I.12.14 18 year old applicants by sex and POLAR4 quintile: England

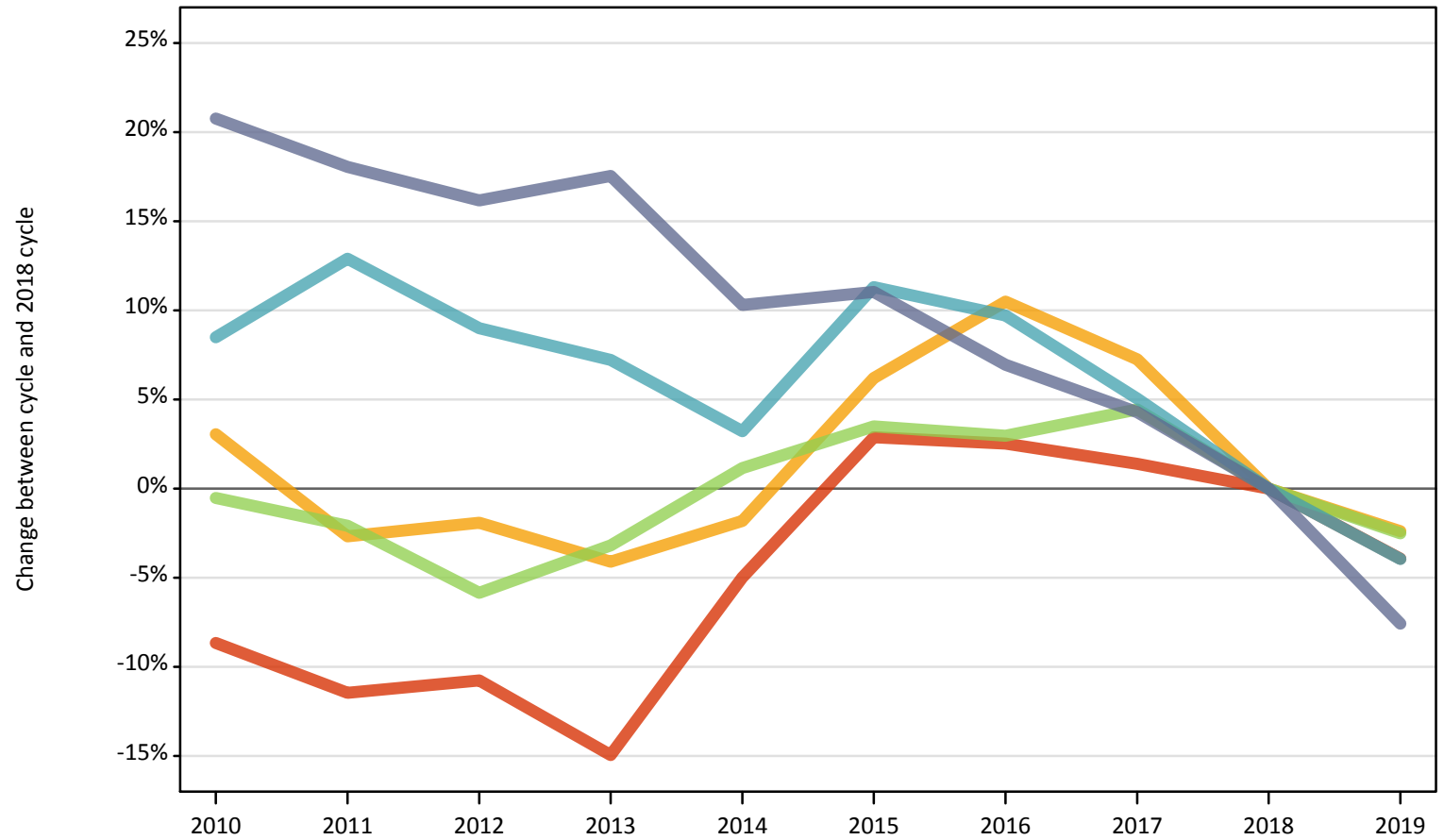
Difference between cycle and 2018 cycle

Sex and POLAR4 quintile of applicant		2010	2011	2012	2013	2014	2015	2016	2017	2018	2019
Women	Quintile 1	-13%	-11%	-15%	-14%	-6%	0%	0%	2%	0%	4%
	Quintile 2	-7%	-7%	-10%	-8%	-4%	1%	1%	1%	0%	0%
	Quintile 3	-4%	-5%	-7%	-6%	-4%	2%	3%	3%	0%	2%
	Quintile 4	-4%	-4%	-8%	-6%	-5%	-0%	0%	1%	0%	1%
	Quintile 5	-3%	-3%	-5%	-6%	-6%	-1%	1%	0%	0%	1%
Men	Quintile 1	-7%	-8%	-13%	-8%	-2%	1%	1%	3%	0%	3%
	Quintile 2	-1%	-1%	-7%	-6%	-1%	2%	3%	2%	0%	-0%
	Quintile 3	1%	-0%	-5%	-4%	-0%	2%	2%	3%	0%	2%
	Quintile 4	-1%	-0%	-5%	-5%	-2%	-1%	-0%	0%	0%	2%
	Quintile 5	-1%	-1%	-5%	-5%	-4%	-2%	0%	2%	0%	1%

Note: The percentage change is not recorded in the above table for groups with fewer than 10 applicants in that cycle or in the 2018 cycle.

I.12.15 18 year old applicants by POLAR4 quintile: Northern Ireland
Difference between cycle and 2018 cycle

- Quintile 1
- Quintile 2
- Quintile 3
- Quintile 4
- Quintile 5



Note: The percentage change is not plotted in the above chart for groups with fewer than 500 applicants in any one cycle.

I.12.16 18 year old applicants by POLAR4 quintile: Northern Ireland

POLAR4 quintile of applicant		2010	2011	2012	2013	2014	2015	2016	2017	2018	2019
Northern Ireland	Quintile 1	1,050	1,010	1,020	970	1,090	1,180	1,170	1,160	1,140	1,100
	Quintile 2	1,080	1,020	1,030	1,010	1,030	1,110	1,160	1,120	1,050	1,020
	Quintile 3	1,910	1,880	1,810	1,860	1,940	1,980	1,970	2,000	1,920	1,870
	Quintile 4	3,000	3,130	3,020	2,970	2,860	3,080	3,040	2,910	2,770	2,660
	Quintile 5	5,000	4,890	4,810	4,870	4,570	4,600	4,430	4,320	4,140	3,830

I.12.17 18 year old applicants by POLAR4 quintile: Northern Ireland

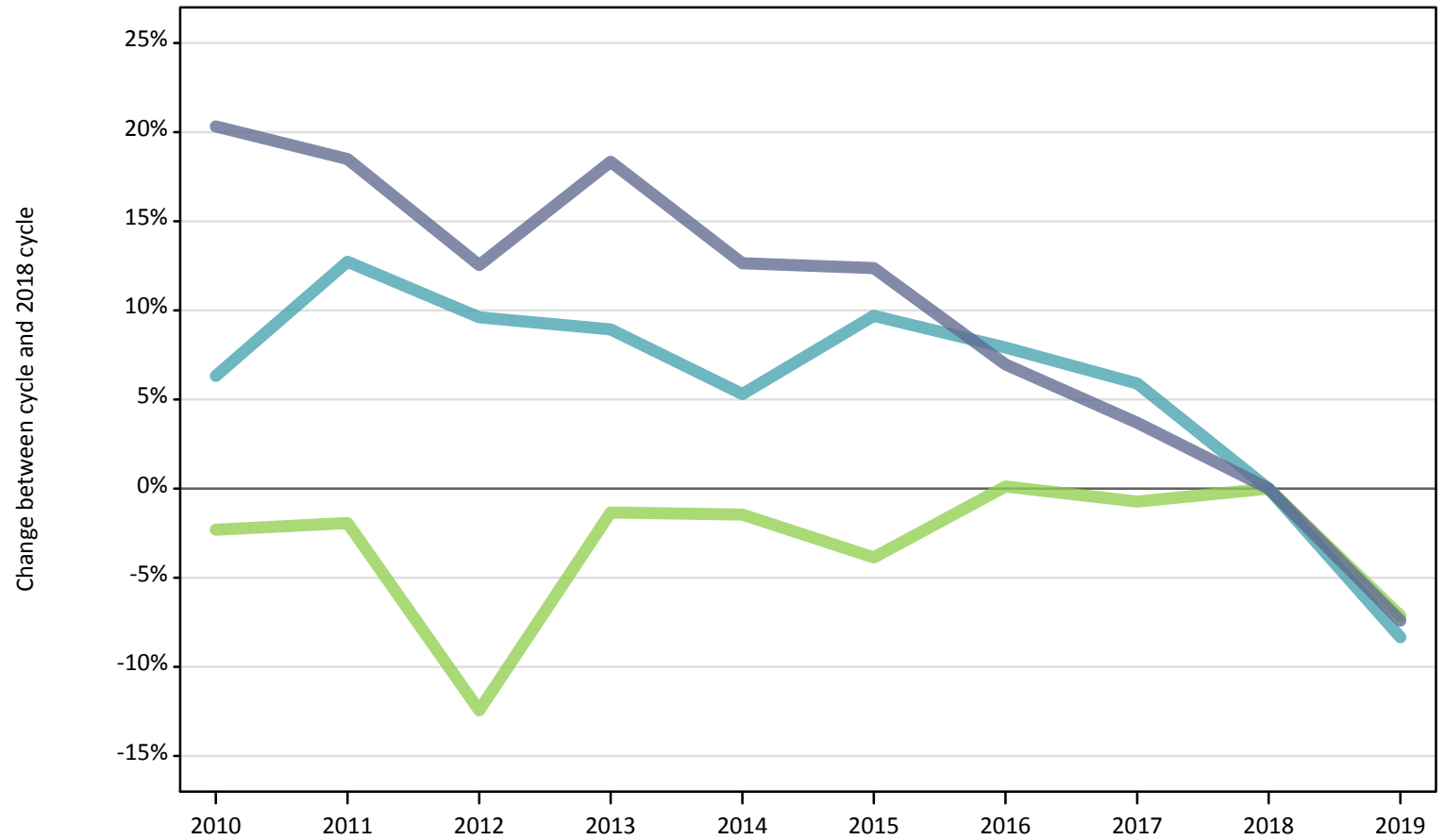
Difference between cycle and 2018 cycle

POLAR4 quintile of applicant		2010	2011	2012	2013	2014	2015	2016	2017	2018	2019
Northern Ireland	Quintile 1	-9%	-11%	-11%	-15%	-5%	3%	3%	1%	0%	-4%
	Quintile 2	3%	-3%	-2%	-4%	-2%	6%	10%	7%	0%	-2%
	Quintile 3	-1%	-2%	-6%	-3%	1%	3%	3%	4%	0%	-3%
	Quintile 4	8%	13%	9%	7%	3%	11%	10%	5%	0%	-4%
	Quintile 5	21%	18%	16%	18%	10%	11%	7%	4%	0%	-8%

Note: The percentage change is not recorded in the above table for groups with fewer than 10 applicants in that cycle or in the 2018 cycle.

I.12.18 18 year old applicants by POLAR4 quintile: Northern Ireland (Men)
Difference between cycle and 2018 cycle

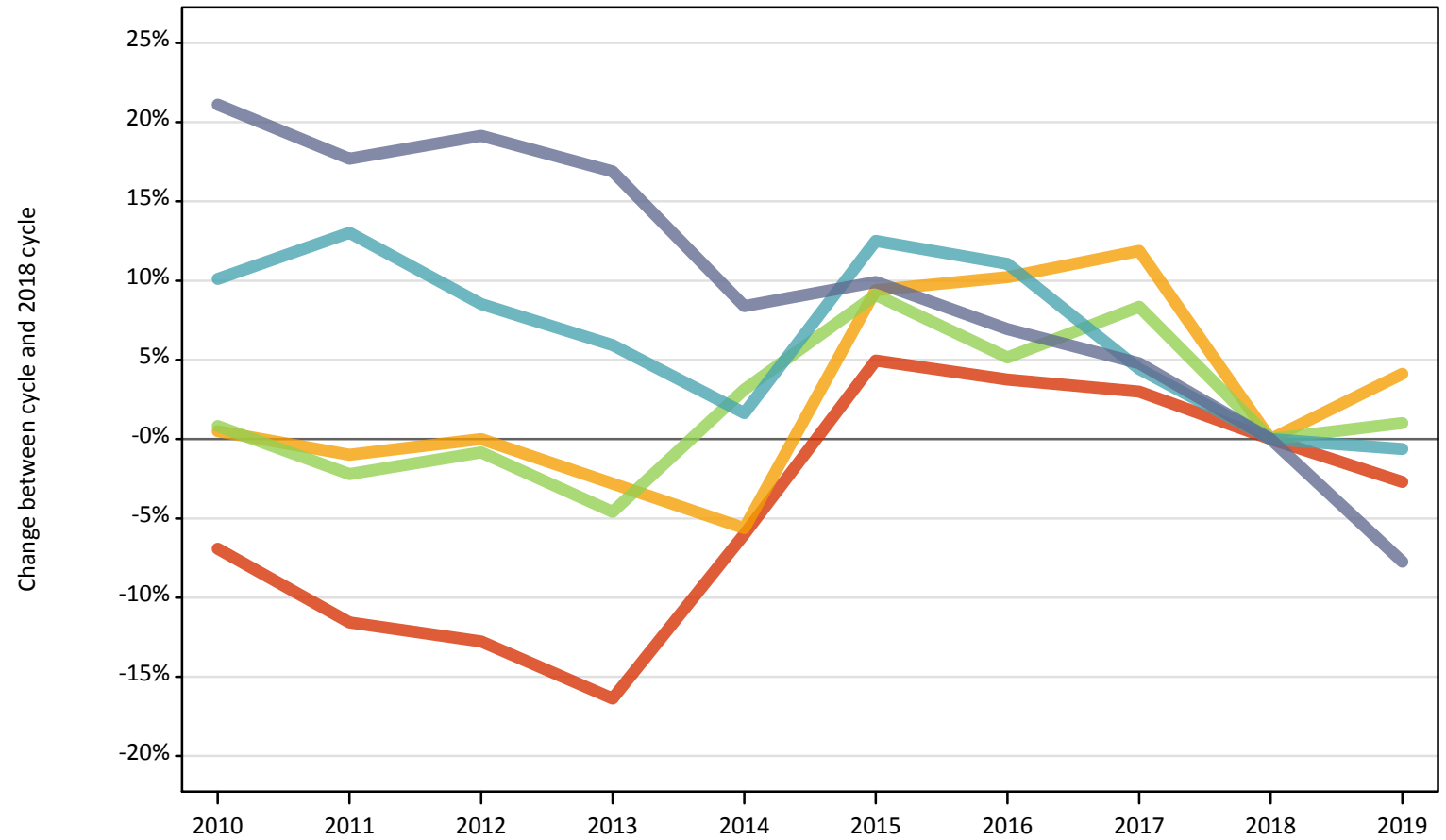
- Quintile 1
- Quintile 2
- Quintile 3
- Quintile 4
- Quintile 5



Note: The percentage change is not plotted in the above chart for groups with fewer than 500 applicants in any one cycle.

I.12.19 18 year old applicants by POLAR4 quintile: Northern Ireland (Women)
Difference between cycle and 2018 cycle

- Quintile 1
- Quintile 2
- Quintile 3
- Quintile 4
- Quintile 5



Note: The percentage change is not plotted in the above chart for groups with fewer than 500 applicants in any one cycle.

I.12.20 18 year old applicants by sex and POLAR4 quintile: Northern Ireland

Sex and POLAR4 quintile of applicant		2010	2011	2012	2013	2014	2015	2016	2017	2018	2019
Women	Quintile 1	620	590	580	560	630	700	690	690	670	650
	Quintile 2	610	600	610	590	570	660	670	680	610	630
	Quintile 3	1,100	1,070	1,080	1,040	1,120	1,190	1,150	1,180	1,090	1,100
	Quintile 4	1,740	1,790	1,720	1,680	1,610	1,780	1,760	1,650	1,580	1,570
	Quintile 5	2,760	2,680	2,710	2,660	2,470	2,500	2,440	2,390	2,280	2,100
Men	Quintile 1	430	420	440	420	460	480	480	470	480	450
	Quintile 2	470	420	420	420	460	450	490	450	440	390
	Quintile 3	810	810	730	820	820	800	830	820	830	770
	Quintile 4	1,260	1,340	1,300	1,290	1,250	1,300	1,280	1,260	1,190	1,090
	Quintile 5	2,250	2,210	2,100	2,210	2,100	2,100	2,000	1,940	1,870	1,730

I.12.21 18 year old applicants by sex and POLAR4 quintile: Northern Ireland

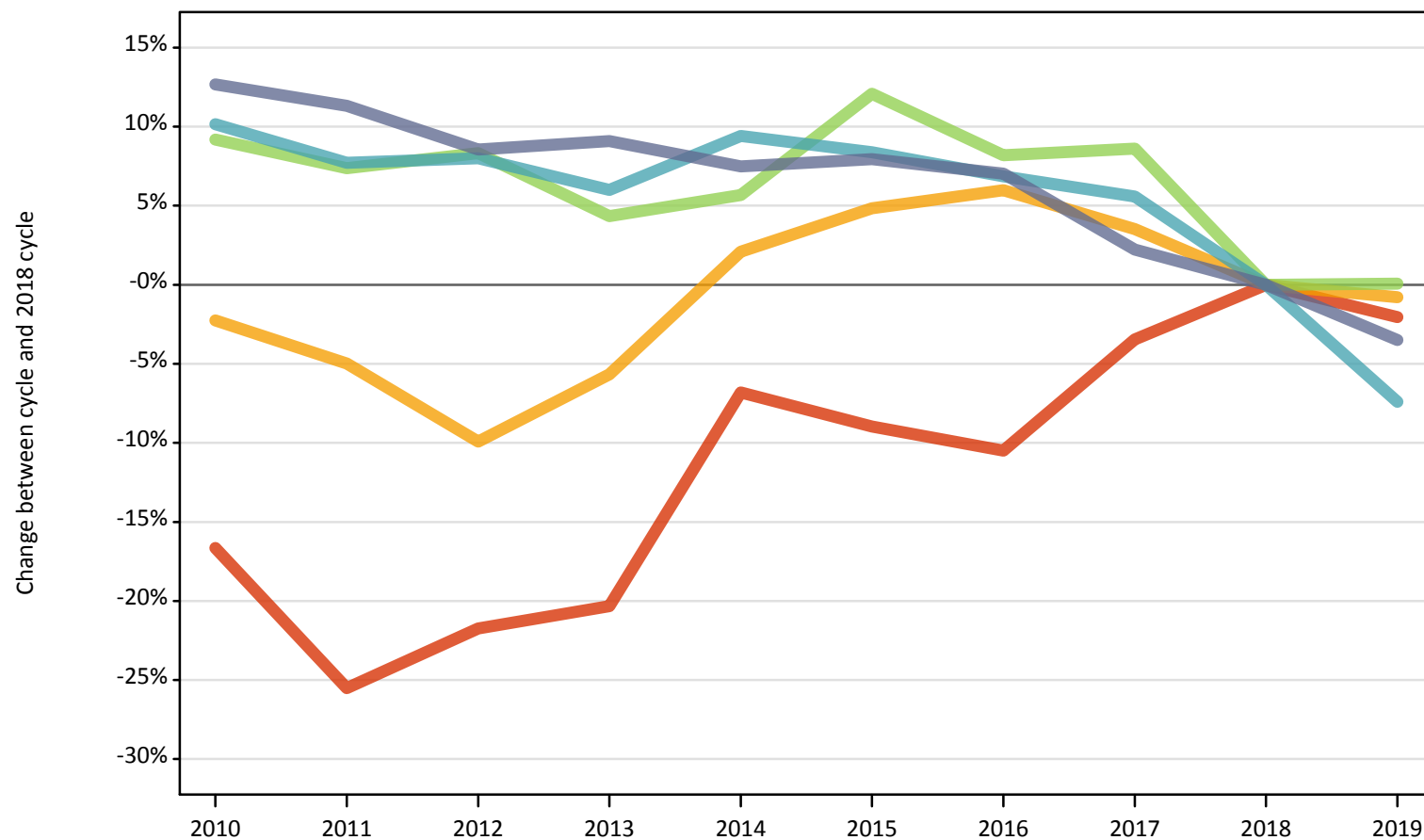
Difference between cycle and 2018 cycle

Sex and POLAR4 quintile of applicant		2010	2011	2012	2013	2014	2015	2016	2017	2018	2019
Women	Quintile 1	-7%	-12%	-13%	-16%	-6%	5%	4%	3%	0%	-3%
	Quintile 2	0%	-1%	0%	-3%	-6%	9%	10%	12%	0%	4%
	Quintile 3	1%	-2%	-1%	-5%	3%	9%	5%	8%	0%	1%
	Quintile 4	10%	13%	9%	6%	2%	13%	11%	4%	0%	-1%
	Quintile 5	21%	18%	19%	17%	8%	10%	7%	5%	0%	-8%
Men	Quintile 1	-11%	-11%	-8%	-13%	-4%	0%	1%	-1%	0%	-6%
	Quintile 2	7%	-5%	-5%	-6%	3%	2%	11%	1%	0%	-11%
	Quintile 3	-2%	-2%	-12%	-1%	-1%	-4%	0%	-1%	0%	-7%
	Quintile 4	6%	13%	10%	9%	5%	10%	8%	6%	0%	-8%
	Quintile 5	20%	18%	13%	18%	13%	12%	7%	4%	0%	-7%

Note: The percentage change is not recorded in the above table for groups with fewer than 10 applicants in that cycle or in the 2018 cycle.

I.12.22 18 year old applicants by POLAR4 quintile: Scotland
Difference between cycle and 2018 cycle

- Quintile 1
- Quintile 2
- Quintile 3
- Quintile 4
- Quintile 5



Note: The percentage change is not plotted in the above chart for groups with fewer than 500 applicants in any one cycle.

I.12.23 18 year old applicants by POLAR4 quintile: Scotland

POLAR4 quintile of applicant		2010	2011	2012	2013	2014	2015	2016	2017	2018	2019
Scotland	Quintile 1	770	690	720	740	860	840	830	890	930	910
	Quintile 2	1,860	1,810	1,720	1,800	1,950	2,000	2,020	1,970	1,910	1,890
	Quintile 3	3,200	3,150	3,170	3,060	3,100	3,280	3,170	3,180	2,930	2,930
	Quintile 4	4,640	4,540	4,550	4,470	4,610	4,570	4,500	4,450	4,220	3,900
	Quintile 5	9,230	9,120	8,890	8,930	8,800	8,840	8,760	8,370	8,190	7,900

I.12.24 18 year old applicants by POLAR4 quintile: Scotland

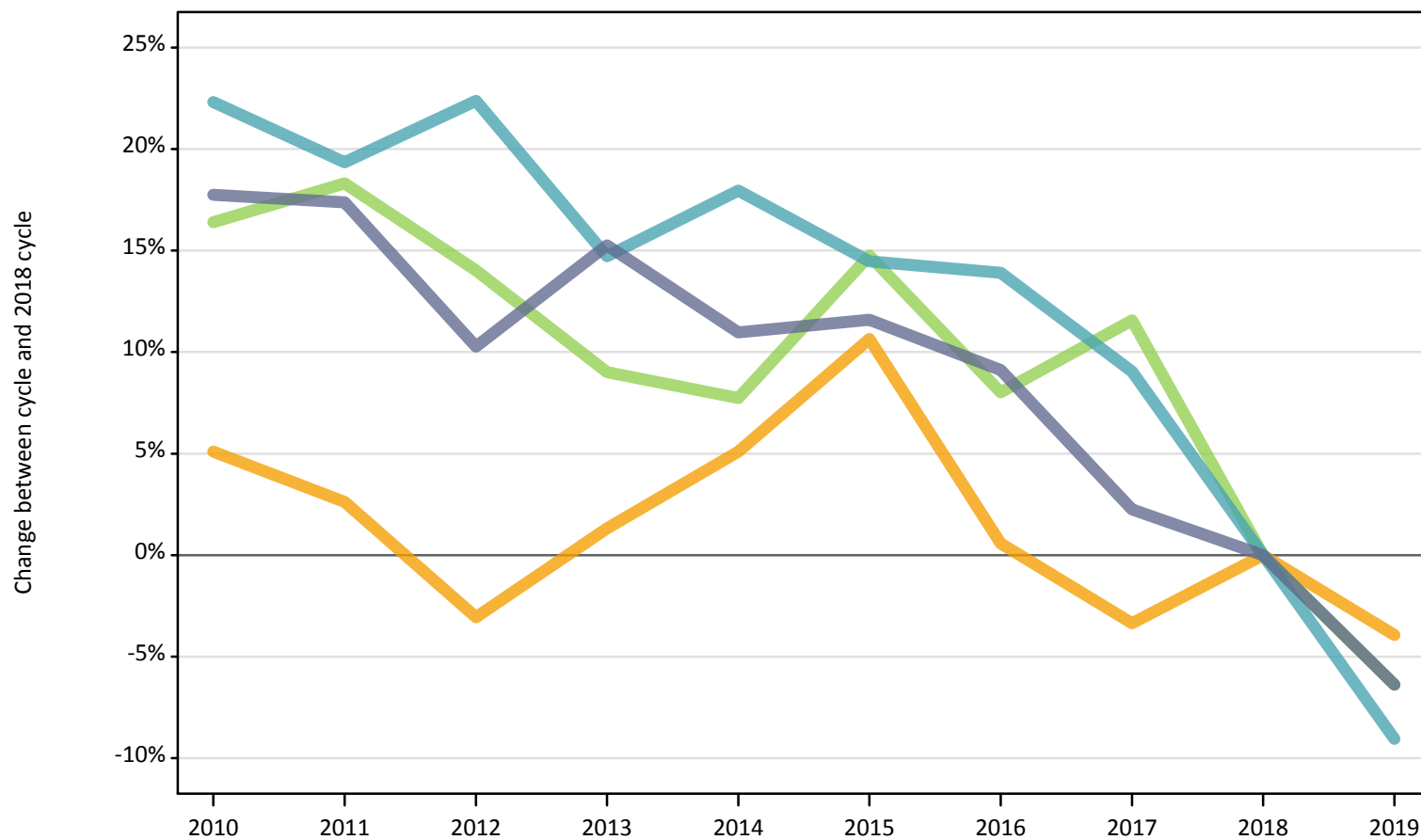
Difference between cycle and 2018 cycle

POLAR4 quintile of applicant		2010	2011	2012	2013	2014	2015	2016	2017	2018	2019
Scotland	Quintile 1	-17%	-26%	-22%	-20%	-7%	-9%	-10%	-3%	0%	-2%
	Quintile 2	-2%	-5%	-10%	-6%	2%	5%	6%	4%	0%	-1%
	Quintile 3	9%	7%	8%	4%	6%	12%	8%	9%	0%	0%
	Quintile 4	10%	8%	8%	6%	9%	8%	7%	6%	0%	-7%
	Quintile 5	13%	11%	9%	9%	7%	8%	7%	2%	0%	-4%

Note: The percentage change is not recorded in the above table for groups with fewer than 10 applicants in that cycle or in the 2018 cycle.

I.12.25 18 year old applicants by POLAR4 quintile: Scotland (Men)
Difference between cycle and 2018 cycle

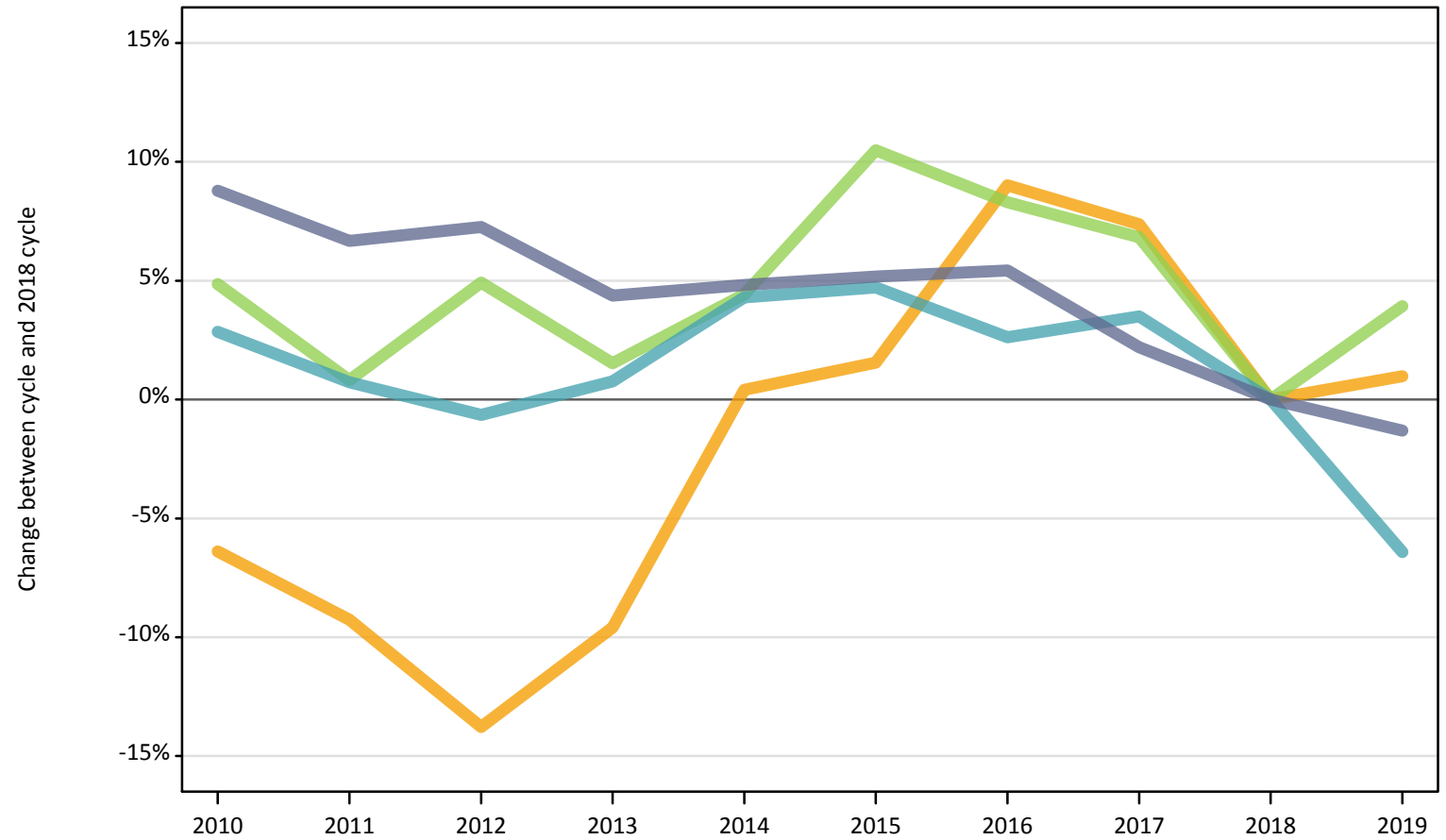
- Quintile 1
- Quintile 2
- Quintile 3
- Quintile 4
- Quintile 5



Note: The percentage change is not plotted in the above chart for groups with fewer than 500 applicants in any one cycle.

I.12.26 18 year old applicants by POLAR4 quintile: Scotland (Women)
Difference between cycle and 2018 cycle

- Quintile 1
- Quintile 2
- Quintile 3
- Quintile 4
- Quintile 5



Note: The percentage change is not plotted in the above chart for groups with fewer than 500 applicants in any one cycle.

I.12.27 18 year old applicants by sex and POLAR4 quintile: Scotland

Sex and POLAR4 quintile of applicant		2010	2011	2012	2013	2014	2015	2016	2017	2018	2019
Women	Quintile 1	470	420	440	440	550	540	550	570	590	600
	Quintile 2	1,140	1,110	1,050	1,100	1,230	1,240	1,330	1,310	1,220	1,230
	Quintile 3	1,920	1,850	1,920	1,860	1,910	2,020	1,980	1,960	1,830	1,900
	Quintile 4	2,710	2,650	2,620	2,650	2,750	2,760	2,700	2,730	2,630	2,460
	Quintile 5	5,050	4,950	4,980	4,850	4,870	4,880	4,900	4,750	4,640	4,580
Men	Quintile 1	300	270	290	300	310	300	270	320	340	310
	Quintile 2	720	700	670	700	720	760	690	660	690	660
	Quintile 3	1,280	1,300	1,250	1,200	1,180	1,260	1,190	1,230	1,100	1,030
	Quintile 4	1,940	1,890	1,940	1,820	1,870	1,810	1,800	1,730	1,580	1,440
	Quintile 5	4,170	4,160	3,910	4,090	3,930	3,960	3,870	3,630	3,550	3,320

I.12.28 18 year old applicants by sex and POLAR4 quintile: Scotland

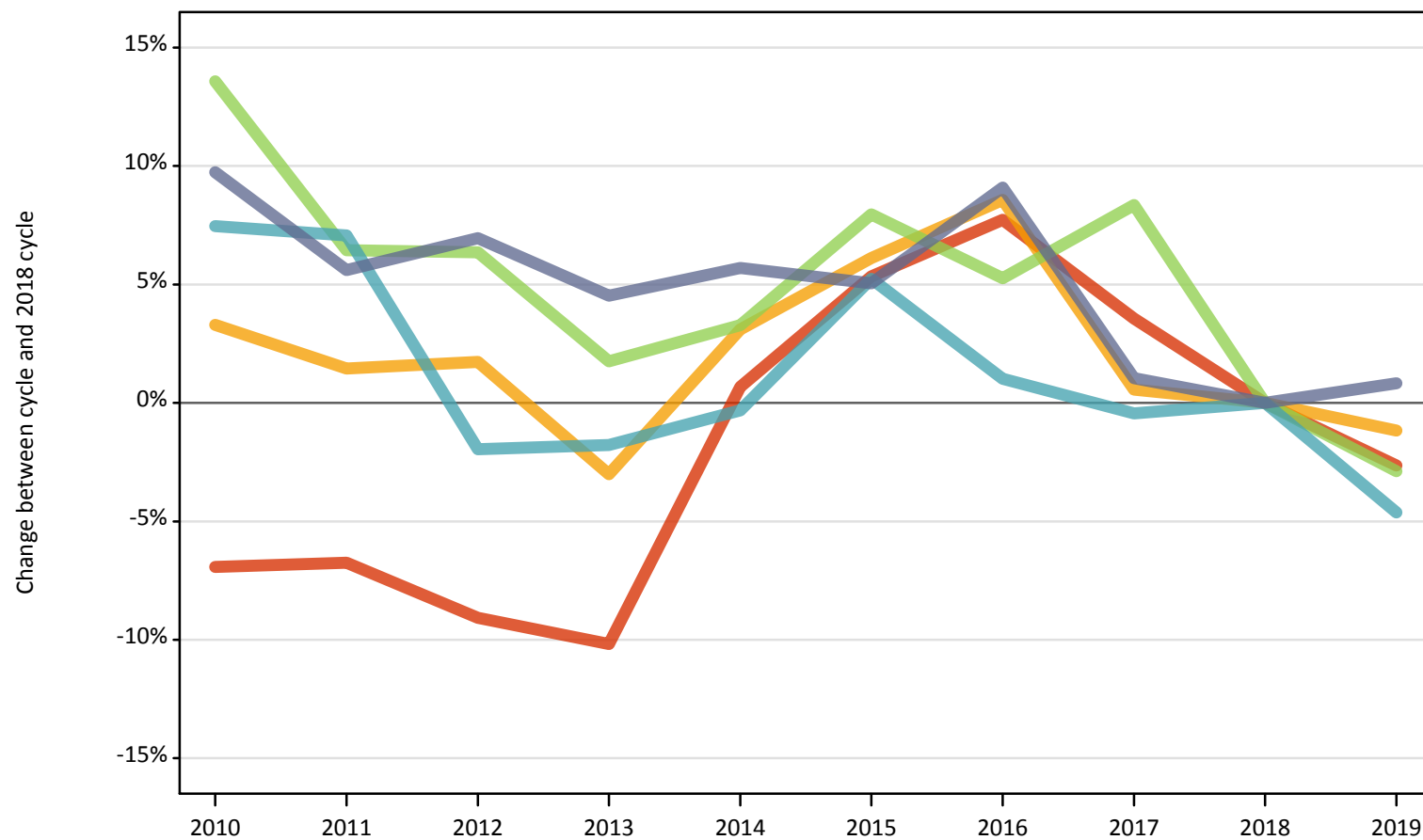
Difference between cycle and 2018 cycle

Sex and POLAR4 quintile of applicant		2010	2011	2012	2013	2014	2015	2016	2017	2018	2019
Women	Quintile 1	-20%	-29%	-26%	-25%	-6%	-8%	-6%	-3%	0%	2%
	Quintile 2	-6%	-9%	-14%	-10%	0%	2%	9%	7%	0%	1%
	Quintile 3	5%	1%	5%	2%	4%	10%	8%	7%	0%	4%
	Quintile 4	3%	1%	-1%	1%	4%	5%	3%	3%	0%	-6%
	Quintile 5	9%	7%	7%	4%	5%	5%	5%	2%	0%	-1%
Men	Quintile 1	-11%	-20%	-15%	-12%	-8%	-11%	-19%	-4%	0%	-9%
	Quintile 2	5%	3%	-3%	1%	5%	11%	1%	-3%	0%	-4%
	Quintile 3	16%	18%	14%	9%	8%	15%	8%	12%	0%	-6%
	Quintile 4	22%	19%	22%	15%	18%	14%	14%	9%	0%	-9%
	Quintile 5	18%	17%	10%	15%	11%	12%	9%	2%	0%	-6%

Note: The percentage change is not recorded in the above table for groups with fewer than 10 applicants in that cycle or in the 2018 cycle.

I.12.29 18 year old applicants by POLAR4 quintile: Wales
Difference between cycle and 2018 cycle

- Quintile 1
- Quintile 2
- Quintile 3
- Quintile 4
- Quintile 5



Note: The percentage change is not plotted in the above chart for groups with fewer than 500 applicants in any one cycle.

I.12.30 18 year old applicants by POLAR4 quintile: Wales

POLAR4 quintile of applicant		2010	2011	2012	2013	2014	2015	2016	2017	2018	2019
Wales	Quintile 1	1,520	1,520	1,480	1,470	1,640	1,720	1,760	1,690	1,630	1,590
	Quintile 2	2,570	2,520	2,530	2,410	2,560	2,640	2,700	2,500	2,490	2,460
	Quintile 3	2,910	2,730	2,730	2,610	2,650	2,770	2,700	2,780	2,560	2,490
	Quintile 4	2,420	2,410	2,210	2,210	2,240	2,370	2,270	2,240	2,250	2,150
	Quintile 5	2,520	2,430	2,460	2,400	2,430	2,420	2,510	2,320	2,300	2,320

I.12.31 18 year old applicants by POLAR4 quintile: Wales

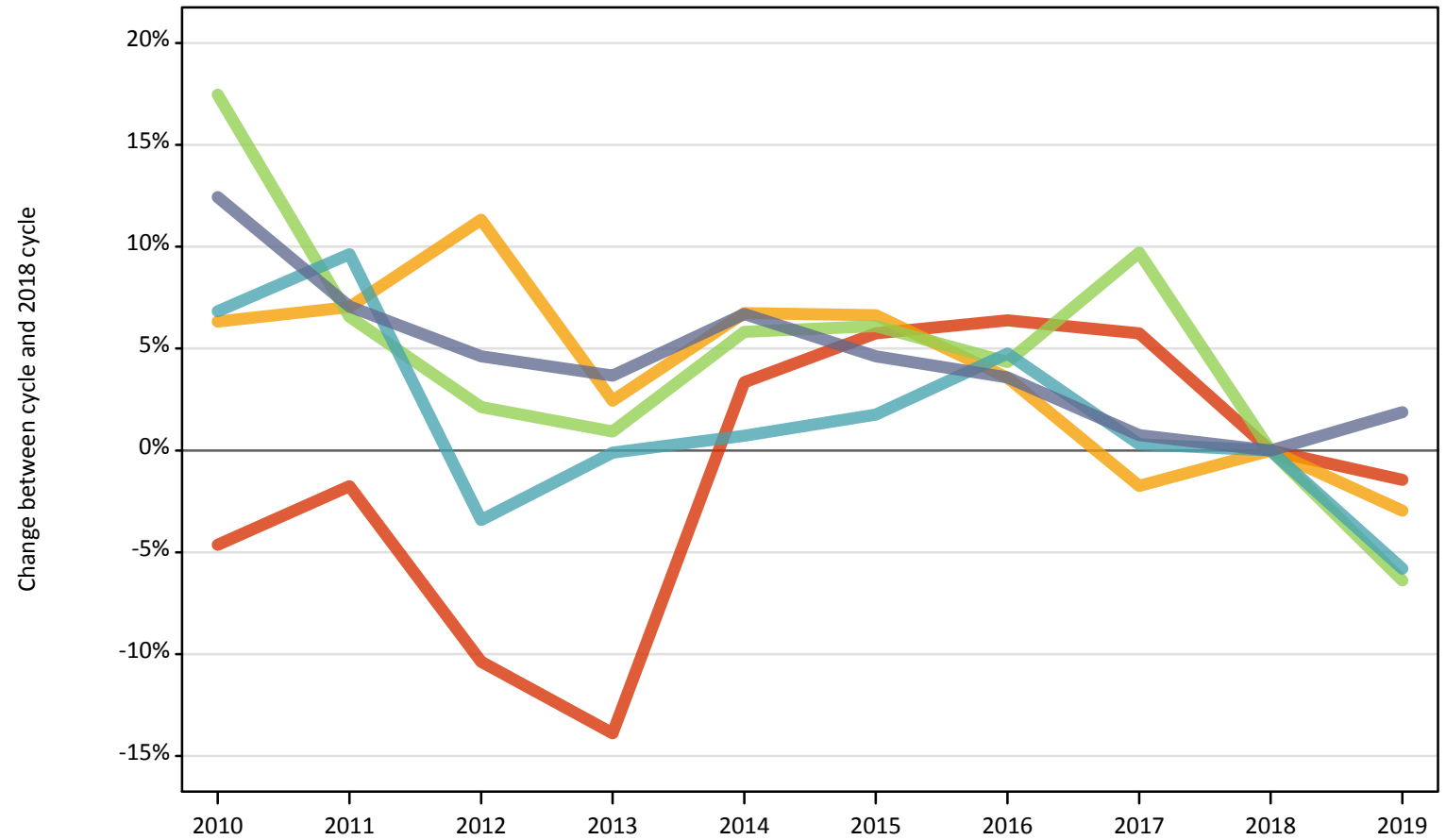
Difference between cycle and 2018 cycle

POLAR4 quintile of applicant		2010	2011	2012	2013	2014	2015	2016	2017	2018	2019
Wales	Quintile 1	-7%	-7%	-9%	-10%	1%	5%	8%	4%	0%	-3%
	Quintile 2	3%	1%	2%	-3%	3%	6%	9%	1%	0%	-1%
	Quintile 3	14%	6%	6%	2%	3%	8%	5%	8%	0%	-3%
	Quintile 4	7%	7%	-2%	-2%	-0%	5%	1%	-0%	0%	-5%
	Quintile 5	10%	6%	7%	5%	6%	5%	9%	1%	0%	1%

Note: The percentage change is not recorded in the above table for groups with fewer than 10 applicants in that cycle or in the 2018 cycle.

I.12.32 18 year old applicants by POLAR4 quintile: Wales (Men)
Difference between cycle and 2018 cycle

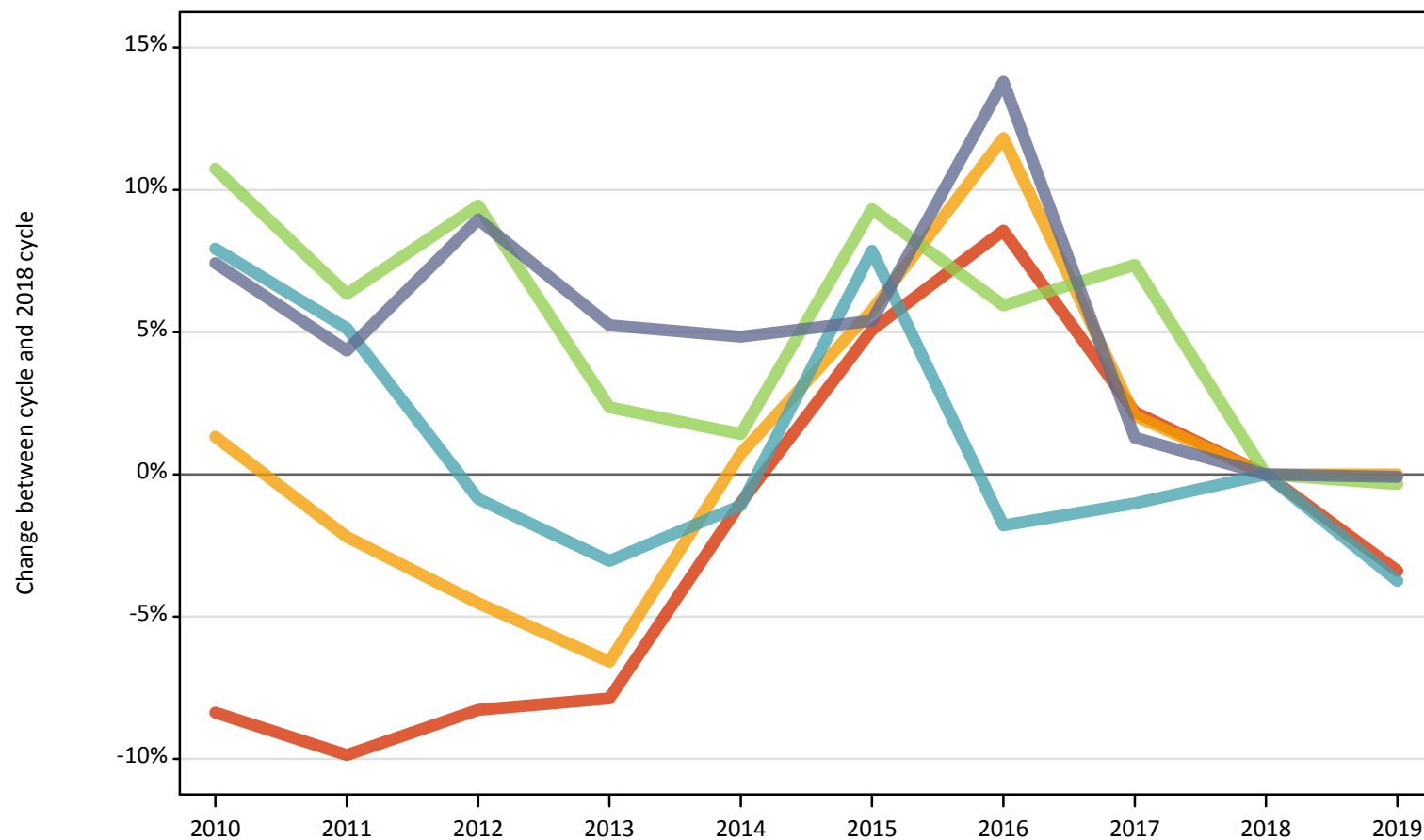
- Quintile 1
- Quintile 2
- Quintile 3
- Quintile 4
- Quintile 5



Note: The percentage change is not plotted in the above chart for groups with fewer than 500 applicants in any one cycle.

I.12.33 18 year old applicants by POLAR4 quintile: Wales (Women)
Difference between cycle and 2018 cycle

- Quintile 1
- Quintile 2
- Quintile 3
- Quintile 4
- Quintile 5



Note: The percentage change is not plotted in the above chart for groups with fewer than 500 applicants in any one cycle.

I.12.34 18 year old applicants by sex and POLAR4 quintile: Wales

Sex and POLAR4 quintile of applicant		2010	2011	2012	2013	2014	2015	2016	2017	2018	2019
Women	Quintile 1	920	910	920	930	990	1,060	1,090	1,030	1,000	970
	Quintile 2	1,530	1,470	1,440	1,410	1,520	1,590	1,680	1,540	1,510	1,510
	Quintile 3	1,640	1,580	1,620	1,520	1,500	1,620	1,570	1,590	1,480	1,480
	Quintile 4	1,390	1,350	1,270	1,250	1,270	1,390	1,260	1,270	1,290	1,240
	Quintile 5	1,330	1,290	1,350	1,300	1,300	1,310	1,410	1,260	1,240	1,240
Men	Quintile 1	600	620	560	540	650	660	670	660	630	620
	Quintile 2	1,040	1,050	1,090	1,000	1,050	1,050	1,020	960	980	950
	Quintile 3	1,270	1,150	1,110	1,090	1,150	1,150	1,130	1,190	1,080	1,010
	Quintile 4	1,030	1,060	930	970	970	980	1,010	970	970	910
	Quintile 5	1,190	1,140	1,110	1,100	1,130	1,110	1,100	1,070	1,060	1,080

I.12.35 18 year old applicants by sex and POLAR4 quintile: Wales

Difference between cycle and 2018 cycle

Sex and POLAR4 quintile of applicant		2010	2011	2012	2013	2014	2015	2016	2017	2018	2019
Women	Quintile 1	-8%	-10%	-8%	-8%	-1%	5%	9%	2%	0%	-3%
	Quintile 2	1%	-2%	-5%	-7%	1%	6%	12%	2%	0%	0%
	Quintile 3	11%	6%	9%	2%	1%	9%	6%	7%	0%	-0%
	Quintile 4	8%	5%	-1%	-3%	-1%	8%	-2%	-1%	0%	-4%
	Quintile 5	7%	4%	9%	5%	5%	5%	14%	1%	0%	-0%
Men	Quintile 1	-5%	-2%	-10%	-14%	3%	6%	6%	6%	0%	-1%
	Quintile 2	6%	7%	11%	2%	7%	7%	4%	-2%	0%	-3%
	Quintile 3	17%	7%	2%	1%	6%	6%	4%	10%	0%	-6%
	Quintile 4	7%	10%	-3%	-0%	1%	2%	5%	0%	0%	-6%
	Quintile 5	12%	7%	5%	4%	7%	5%	4%	1%	0%	2%

Note: The percentage change is not recorded in the above table for groups with fewer than 10 applicants in that cycle or in the 2018 cycle.

I.12.36 Technical notes and definitions

Applicants have been able to submit applications for all 2019 courses since early September.

Applicants who submit their applications to UCAS by the January deadline are considered 'on time' applicants for the large majority of courses offered through UCAS. Some art and design courses have a later deadline of 24 March. By definition all main scheme applications have been received by the 30 June deadline.

Counts of the number of applicants reported have been rounded to the nearest 10 applicants, this may result in instances where totals do not equal the sum of the components. Proportional changes have been rounded to the nearest whole percentage point.

Age

This statistical release uses country-specific age definitions which align with the cut off points for school/college cohorts within the different administrations of the UK. For England and Wales ages are defined on the 31 August, for Northern Ireland on the 1 July and for Scotland on the 28 February the following year. Defining ages in this way matches the assignment of children to school cohorts. For applicants outside of the UK the cohort cut off for England and Wales has been used.

Applicant

A person who has made an application in the UCAS system during the cycle reported (including applications for deferred entry). Records of prior acceptance (RPAs) are excluded.

Application

An application to a course at a provider made by an applicant in the UCAS main scheme. Applicants may make up to five main scheme applications.

Country of provider

An applicant may be counted once for each provider country they have applied to in the main scheme. If an applicant has applied to providers in multiple countries then the applicant is counted once within each country of provider applied to.

Domicile

Declared area of permanent residence. The Channel Islands and the Isle of Man have been assigned as 'Not EU'.

Ethnic group

High level grouping of ethnic origin as declared by the applicant: 'Asian', 'Black', 'Mixed', 'White', 'Other', 'Unknown'.

First time applicant

An applicant that did not apply to the UCAS scheme in the previous cycle.

Main scheme

The main UCAS application scheme through which up to five providers/courses can be applied to. This opens in September and closes to new applications on 30 June the following year.

Reapplicant

An applicant that applied to the UCAS scheme in the previous cycle.

Sex

As declared by the applicant.

IMD 2015

The Index of Multiple Deprivation for 2015 identifies small area concentrations of multiple deprivation across all of England, providing a relative measure of deprivation amongst small areas (data zones). When reporting by IMD 2015, the IMD 2015 is used to group areas in each year in the times series.

NIMDM 2017

The Northern Ireland Multiple Deprivation Measure for 2017 identifies small area concentrations of multiple deprivation across all of Northern Ireland, providing a relative measure of deprivation amongst small areas (data zones). When reporting by NIMDM 2017, the NIMDM 2017 is used to group areas in each year in the times series.

SIMD 2012

The Scottish Index of Multiple Deprivation for 2012 identifies small area concentrations of multiple deprivation across all of Scotland, providing a relative measure of deprivation among small areas (data zones). When reporting by SIMD 2012, the SIMD 2012 is used to group areas in each year in the times series.

SIMD 2016

The Scottish Index of Multiple Deprivation for 2016 identifies small area concentrations of multiple deprivation across all of Scotland, providing a relative measure of deprivation among small areas (data zones). When reporting by SIMD 2016, the SIMD 2016 is used to group areas in each year in the times series.

SIMD 2012/2016

Combination of the SIMD measures created in 2012 and 2016. SIMD 2012 is applied to all years before 2017, and SIMD 2016 is applied to years 2017 and onwards.

WIMD 2014

The Welsh Index of Multiple Deprivation identifies small area concentrations of multiple deprivation across all of Wales, providing a relative measure of deprivation among small areas (data zones). In this report, the WIMD 2014 has been used to group areas in each year in the times series.

POLAR4

Developed by HEFCE and classifies small areas across the UK into five groups, according to their level of young participation in HE. Each of these groups represents around 20 per cent of young people, and is ranked from quintile 1 (areas with the lowest young participation rates, considered as the most disadvantaged) to quintile 5 (highest young participation rates, considered most advantaged).

Tariff Group of provider

Providers are grouped as higher, medium or lower tariff based on their average levels of attainment of their accepted applicants (summarised through UCAS Tariff points) in recent cycles. Each group of providers accounted for around a third of all UK 18 year old acceptances in recent cycles.

Subject group

The JACS3 classification used to classify courses into subject groups. With the introduction of HECoS for the 2019 cycle, new courses that were classified using HECoS instead of JACS have been allocated modelled JACS3 values.

Subject group (HECoS)

The CAH classification used to categorise HECoS course subject codes into subject groups. A course may be associated with up to 5 individual subject codes and their respective percentage weight. For this analysis, application totals for subject groups have been calculated by apportioning course applications as weighted by subject group.