

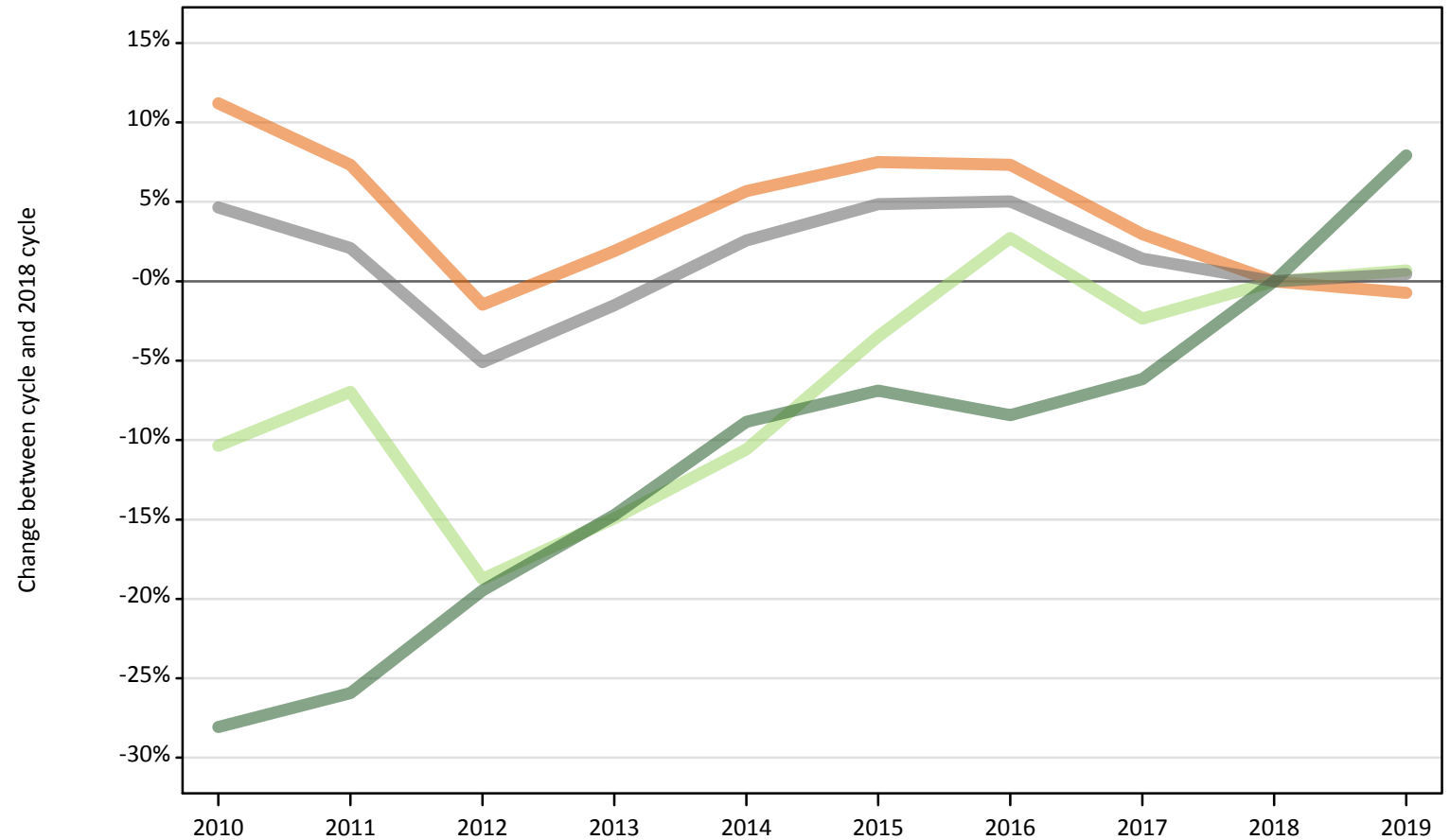
# June Deadline Analysis: Reapplicants

## Applicants by reapplication status at the 30 June deadline

### I.3.1 First-time applicants by domicile group

Difference between cycle and 2018 cycle

- UK
- EU (excluding UK)
- Not EU
- All domiciles



Note: The percentage change is not plotted in the above chart for groups with fewer than 500 applicants in any one cycle.

### I.3.2 Reapplicants by domicile group Difference between cycle and 2018 cycle

- UK
- EU (excluding UK)
- Not EU
- All domiciles



Note: The percentage change is not plotted in the above chart for groups with fewer than 500 applicants in any one cycle.

### I.3.3 Applicants by reapplication status and domicile group

Applicant status and domicile group		2010	2011	2012	2013	2014	2015	2016	2017	2018	2019
First-time applicant	UK	508,980	491,260	450,910	466,400	483,620	492,040	491,270	471,290	457,690	454,350
	EU (excluding UK)	42,180	43,770	38,230	40,030	42,080	45,420	48,340	45,950	47,050	47,370
	Not EU	50,640	52,150	56,700	60,040	64,170	65,550	64,460	66,060	70,400	75,970
	All domiciles	601,800	587,180	545,840	566,470	589,870	603,010	604,070	583,300	575,140	577,690
Reapplicant	UK	50,580	72,860	63,070	61,280	60,960	61,550	62,470	58,330	53,770	51,680
	EU (excluding UK)	2,830	3,830	3,280	3,330	3,310	3,510	3,510	3,300	3,070	3,280
	Not EU	3,350	4,280	4,520	4,830	4,890	4,980	4,840	4,770	4,980	5,370
	All domiciles	56,760	80,970	70,870	69,440	69,160	70,030	70,820	66,400	61,820	60,330
All	UK	559,570	564,120	513,970	527,670	544,580	553,590	553,740	529,620	511,460	506,040
	EU (excluding UK)	45,010	47,600	41,510	43,360	45,380	48,930	51,850	49,250	50,130	50,650
	Not EU	53,980	56,430	61,220	64,870	69,060	70,530	69,300	70,830	75,380	81,340
	All domiciles	658,560	668,150	616,700	635,910	659,030	673,040	674,890	649,700	636,960	638,030

### I.3.4 Applicants by reapplication status and domicile group

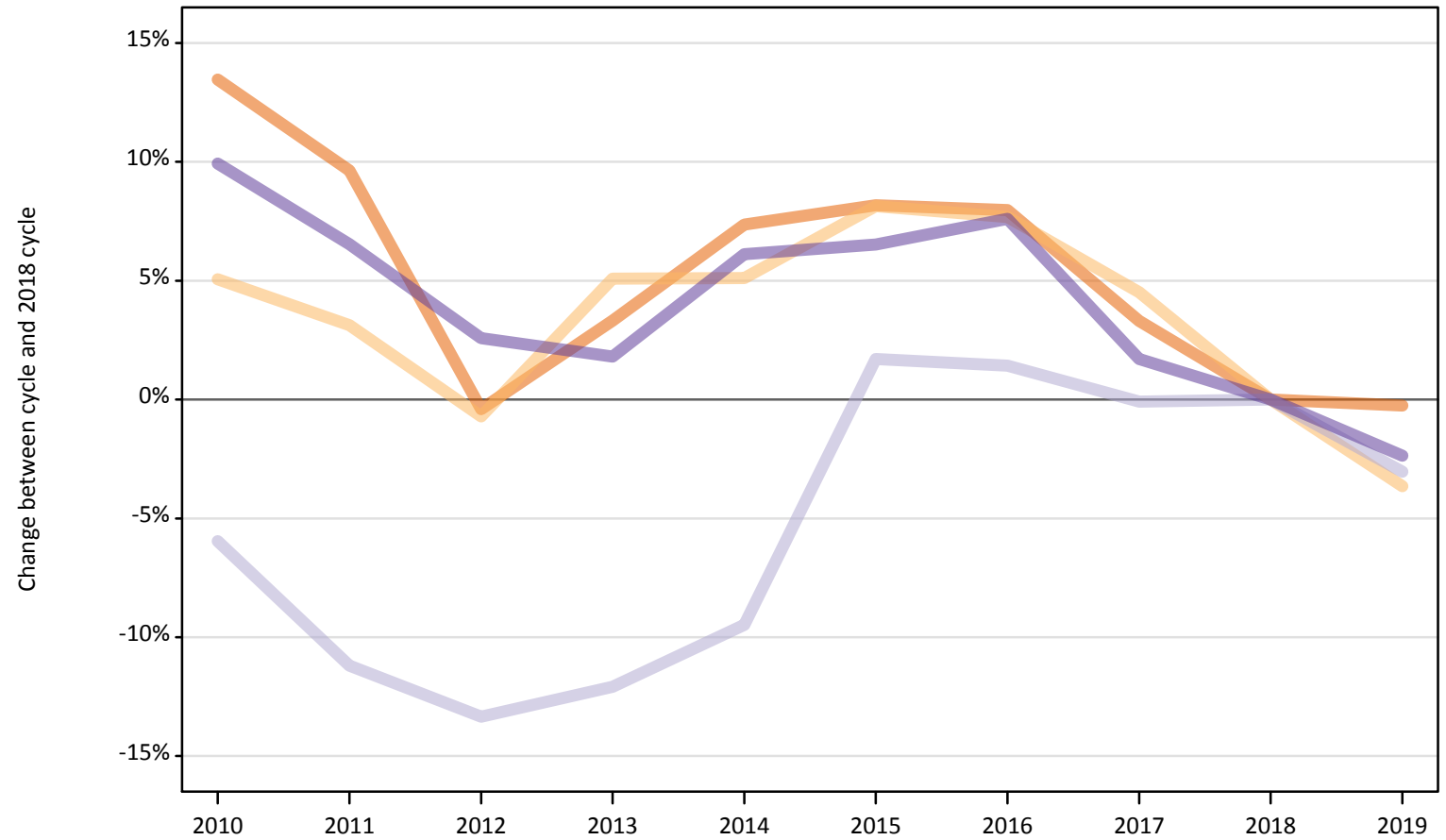
Difference between cycle and 2018 cycle

Applicant status and domicile group		2010	2011	2012	2013	2014	2015	2016	2017	2018	2019
First-time applicant	UK	11%	7%	-1%	2%	6%	8%	7%	3%	0%	-1%
	EU (excluding UK)	-10%	-7%	-19%	-15%	-11%	-3%	3%	-2%	0%	1%
	Not EU	-28%	-26%	-19%	-15%	-9%	-7%	-8%	-6%	0%	8%
	All domiciles	5%	2%	-5%	-2%	3%	5%	5%	1%	0%	0%
Reapplicant	UK	-6%	36%	17%	14%	13%	14%	16%	8%	0%	-4%
	EU (excluding UK)	-8%	25%	7%	9%	8%	14%	14%	8%	0%	7%
	Not EU	-33%	-14%	-9%	-3%	-2%	-0%	-3%	-4%	0%	8%
	All domiciles	-8%	31%	15%	12%	12%	13%	15%	7%	0%	-2%
All	UK	9%	10%	0%	3%	6%	8%	8%	4%	0%	-1%
	EU (excluding UK)	-10%	-5%	-17%	-13%	-9%	-2%	3%	-2%	0%	1%
	Not EU	-28%	-25%	-19%	-14%	-8%	-6%	-8%	-6%	0%	8%
	All domiciles	3%	5%	-3%	-0%	3%	6%	6%	2%	0%	0%

Note: The percentage change is not recorded in the above table for groups with fewer than 10 applicants in that cycle or in the 2018 cycle.

### I.3.5 First-time applicants by UK country of domicile Difference between cycle and 2018 cycle

- England
- Northern Ireland
- Scotland
- Wales



Note: The percentage change is not plotted in the above chart for groups with fewer than 500 applicants in any one cycle.

### I.3.6 Reapplicants by UK country of domicile Difference between cycle and 2018 cycle

- England
- Northern Ireland
- Scotland
- Wales



Note: The percentage change is not plotted in the above chart for groups with fewer than 500 applicants in any one cycle.

### I.3.7 Applicants by reapplication status and UK country of domicile

Applicant status and domicile group		2010	2011	2012	2013	2014	2015	2016	2017	2018	2019
First-time applicant	England	429,690	415,170	377,170	391,300	406,560	409,680	408,890	391,250	378,710	377,750
	Northern Ireland	17,770	17,450	16,800	17,780	17,780	18,290	18,220	17,680	16,920	16,300
	Scotland	39,670	37,460	36,550	37,080	38,180	42,900	42,780	42,140	42,180	40,900
	Wales	21,850	21,180	20,390	20,240	21,100	21,180	21,390	20,220	19,880	19,410
	UK	508,980	491,260	450,910	466,400	483,620	492,040	491,270	471,290	457,690	454,350
Reapplicant	England	43,710	61,600	51,930	50,490	50,360	51,070	50,540	46,610	42,890	41,190
	Northern Ireland	1,640	2,590	2,350	2,520	2,520	2,520	2,890	2,610	2,400	2,220
	Scotland	3,480	5,930	5,940	5,840	5,730	5,600	6,690	6,800	6,530	6,220
	Wales	1,750	2,740	2,840	2,420	2,360	2,370	2,350	2,310	1,950	2,060
	UK	50,580	72,860	63,070	61,280	60,960	61,550	62,470	58,330	53,770	51,680
All	England	473,400	476,770	429,100	441,790	456,920	460,740	459,430	437,860	421,610	418,940
	Northern Ireland	19,410	20,030	19,150	20,290	20,300	20,810	21,110	20,290	19,310	18,520
	Scotland	43,150	43,390	42,490	42,930	43,910	48,490	49,470	48,940	48,710	47,110
	Wales	23,610	23,920	23,240	22,660	23,450	23,550	23,740	22,530	21,830	21,470
	UK	559,570	564,120	513,970	527,670	544,580	553,590	553,740	529,620	511,460	506,040

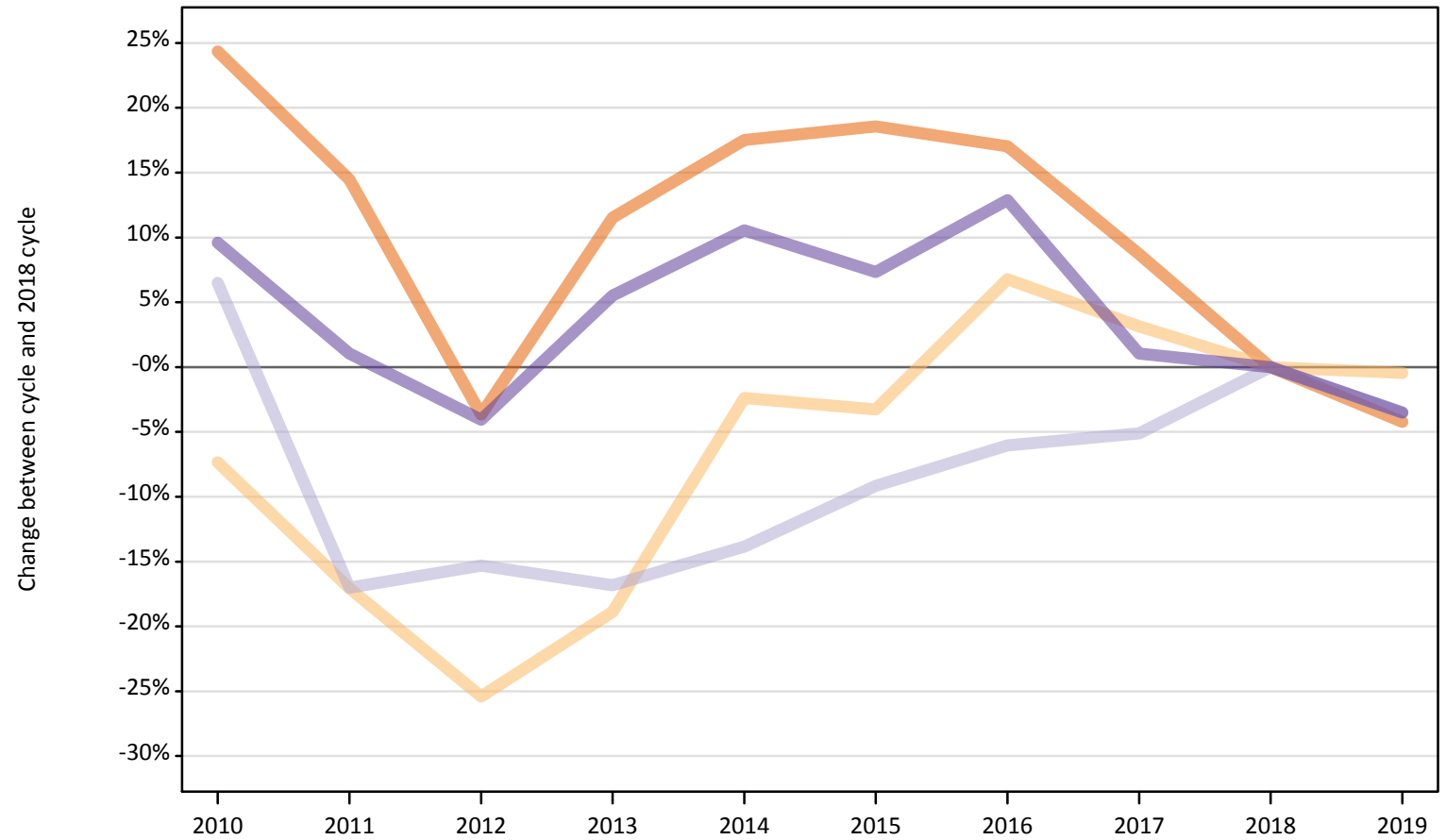
**I.3.8 Applicants by reapplication status and UK country of domicile**  
 Difference between cycle and 2018 cycle

Applicant status and domicile group		2010	2011	2012	2013	2014	2015	2016	2017	2018	2019
First-time applicant	England	13%	10%	-0%	3%	7%	8%	8%	3%	0%	-0%
	Northern Ireland	5%	3%	-1%	5%	5%	8%	8%	5%	0%	-4%
	Scotland	-6%	-11%	-13%	-12%	-9%	2%	1%	-0%	0%	-3%
	Wales	10%	7%	3%	2%	6%	7%	8%	2%	0%	-2%
	UK	11%	7%	-1%	2%	6%	8%	7%	3%	0%	-1%
Reapplicant	England	2%	44%	21%	18%	17%	19%	18%	9%	0%	-4%
	Northern Ireland	-32%	8%	-2%	5%	5%	5%	21%	9%	0%	-8%
	Scotland	-47%	-9%	-9%	-10%	-12%	-14%	2%	4%	0%	-5%
	Wales	-10%	41%	46%	24%	21%	21%	20%	18%	0%	5%
	UK	-6%	36%	17%	14%	13%	14%	16%	8%	0%	-4%
All	England	12%	13%	2%	5%	8%	9%	9%	4%	0%	-1%
	Northern Ireland	0%	4%	-1%	5%	5%	8%	9%	5%	0%	-4%
	Scotland	-11%	-11%	-13%	-12%	-10%	-0%	2%	0%	0%	-3%
	Wales	8%	10%	6%	4%	7%	8%	9%	3%	0%	-2%
	UK	9%	10%	0%	3%	6%	8%	8%	4%	0%	-1%

Note: The percentage change is not recorded in the above table for groups with fewer than 10 applicants in that cycle or in the 2018 cycle.

### I.3.9 19 year old first-time applicants by UK country of domicile Difference between cycle and 2018 cycle

- England
- Northern Ireland
- Scotland
- Wales

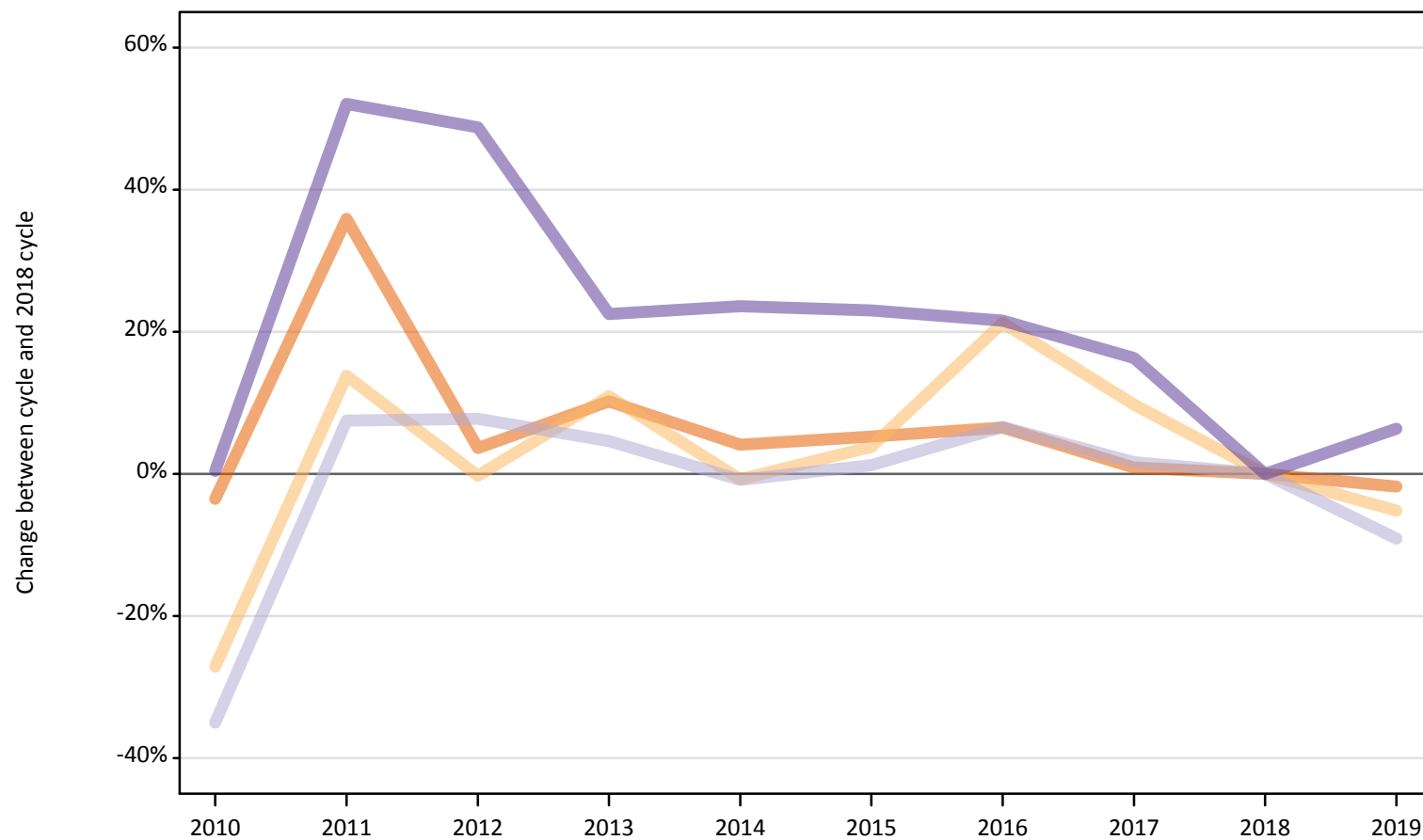


Note: The percentage change is not plotted in the above chart for groups with fewer than 500 applicants in any one cycle.



**I.3.10 19 year old reapplicants by UK country of domicile**  
Difference between cycle and 2018 cycle

- England
- Northern Ireland
- Scotland
- Wales



Note: The percentage change is not plotted in the above chart for groups with fewer than 500 applicants in any one cycle.

### I.3.11 19 year old applicants by reapplication status and UK country of domicile

Applicant status and domicile group		2010	2011	2012	2013	2014	2015	2016	2017	2018	2019
First-time applicant	England	67,020	61,700	51,930	60,120	63,350	63,910	63,080	58,600	53,900	51,630
	Northern Ireland	1,480	1,320	1,190	1,290	1,560	1,540	1,700	1,650	1,600	1,590
	Scotland	3,840	2,990	3,050	3,000	3,110	3,270	3,390	3,420	3,600	3,480
	Wales	3,070	2,830	2,690	2,960	3,100	3,010	3,170	2,830	2,810	2,710
	UK	75,410	68,850	58,860	67,380	71,110	71,740	71,330	66,500	61,910	59,400
Reapplicant	England	23,290	32,800	25,020	26,600	25,130	25,410	25,710	24,350	24,140	23,700
	Northern Ireland	1,150	1,790	1,570	1,740	1,560	1,630	1,910	1,720	1,570	1,490
	Scotland	1,590	2,630	2,630	2,560	2,420	2,470	2,610	2,480	2,440	2,220
	Wales	980	1,480	1,450	1,190	1,200	1,200	1,180	1,130	970	1,040
	UK	27,000	38,700	30,670	32,090	30,310	30,710	31,410	29,690	29,120	28,450
All	England	90,310	94,500	76,940	86,730	88,470	89,320	88,790	82,960	78,040	75,340
	Northern Ireland	2,620	3,110	2,760	3,040	3,120	3,170	3,610	3,370	3,170	3,080
	Scotland	5,430	5,620	5,690	5,550	5,530	5,750	5,990	5,900	6,050	5,700
	Wales	4,050	4,320	4,140	4,150	4,310	4,210	4,350	3,970	3,780	3,740
	UK	102,410	107,540	89,520	99,470	101,420	102,450	102,740	96,200	91,030	87,860

### I.3.12 19 year old applicants by reapplication status and UK country of domicile

Difference between cycle and 2018 cycle

Applicant status and domicile group		2010	2011	2012	2013	2014	2015	2016	2017	2018	2019
First-time applicant	England	24%	14%	-4%	12%	18%	19%	17%	9%	0%	-4%
	Northern Ireland	-7%	-17%	-25%	-19%	-2%	-3%	7%	3%	0%	-0%
	Scotland	6%	-17%	-15%	-17%	-14%	-9%	-6%	-5%	0%	-4%
	Wales	10%	1%	-4%	6%	11%	7%	13%	1%	0%	-3%
	UK	22%	11%	-5%	9%	15%	16%	15%	7%	0%	-4%
Reapplicant	England	-4%	36%	4%	10%	4%	5%	7%	1%	0%	-2%
	Northern Ireland	-27%	14%	-0%	11%	-1%	4%	21%	10%	0%	-5%
	Scotland	-35%	7%	8%	5%	-1%	1%	7%	2%	0%	-9%
	Wales	0%	52%	49%	22%	24%	23%	22%	16%	0%	6%
	UK	-7%	33%	5%	10%	4%	5%	8%	2%	0%	-2%
All	England	16%	21%	-1%	11%	13%	14%	14%	6%	0%	-3%
	Northern Ireland	-17%	-2%	-13%	-4%	-2%	0%	14%	6%	0%	-3%
	Scotland	-10%	-7%	-6%	-8%	-9%	-5%	-1%	-2%	0%	-6%
	Wales	7%	14%	10%	10%	14%	11%	15%	5%	0%	-1%
	UK	12%	18%	-2%	9%	11%	13%	13%	6%	0%	-3%

Note: The percentage change is not recorded in the above table for groups with fewer than 10 applicants in that cycle or in the 2018 cycle.

### I.3.13 Technical notes and definitions

Applicants have been able to submit applications for all 2019 courses since early September.

Applicants who submit their applications to UCAS by the January deadline are considered 'on time' applicants for the large majority of courses offered through UCAS. Some art and design courses have a later deadline of 24 March. By definition all main scheme applications have been received by the 30 June deadline.

Counts of the number of applicants reported have been rounded to the nearest 10 applicants, this may result in instances where totals do not equal the sum of the components. Proportional changes have been rounded to the nearest whole percentage point.

In 2014, the Croatia classification changed from Not EU to EU (excluding UK). In order to present an accurate time series, Croatia has been consistently classified as EU (excluding UK). This will result in differences with data published prior to 2019.

#### Age

This statistical release uses country-specific age definitions which align with the cut off points for school/college cohorts within the different administrations of the UK. For England and Wales ages are defined on the 31 August, for Northern Ireland on the 1 July and for Scotland on the 28 February the following year. Defining ages in this way matches the assignment of children to school cohorts. For applicants outside of the UK the cohort cut off for England and Wales has been used.

#### Applicant

A person who has made an application in the UCAS system during the cycle reported (including applications for deferred entry). Records of prior acceptance (RPAs) are excluded.

#### Application

An application to a course at a provider made by an applicant in the UCAS main scheme. Applicants may make up to five main scheme applications.

#### Country of provider

An applicant may be counted once for each provider country they have applied to in the main scheme. If an applicant has applied to providers in multiple countries then the applicant is counted once within each country of provider applied to.

#### Domicile

Declared area of permanent residence. The Channel Islands and the Isle of Man have been assigned as 'Not EU'.

#### Ethnic group

High level grouping of ethnic origin as declared by the applicant: 'Asian', 'Black', 'Mixed', 'White', 'Other', 'Unknown'.

#### First time applicant

An applicant that did not apply to the UCAS scheme in the previous cycle.

#### Main scheme

The main UCAS application scheme through which up to five providers/courses can be applied to. This opens in September and closes to new applications on 30 June the following year.

#### Reapplicant

An applicant that applied to the UCAS scheme in the previous cycle.

## Sex

As declared by the applicant.

## IMD 2015

The Index of Multiple Deprivation for 2015 identifies small area concentrations of multiple deprivation across all of England, providing a relative measure of deprivation amongst small areas (data zones). When reporting by IMD 2015, the IMD 2015 is used to group areas in each year in the times series.

## NIMDM 2017

The Northern Ireland Multiple Deprivation Measure for 2017 identifies small area concentrations of multiple deprivation across all of Northern Ireland, providing a relative measure of deprivation amongst small areas (data zones). When reporting by NIMDM 2017, the NIMDM 2017 is used to group areas in each year in the times series.

## SIMD 2012

The Scottish Index of Multiple Deprivation for 2012 identifies small area concentrations of multiple deprivation across all of Scotland, providing a relative measure of deprivation among small areas (data zones). When reporting by SIMD 2012, the SIMD 2012 is used to group areas in each year in the times series.

## SIMD 2016

The Scottish Index of Multiple Deprivation for 2016 identifies small area concentrations of multiple deprivation across all of Scotland, providing a relative measure of deprivation among small areas (data zones). When reporting by SIMD 2016, the SIMD 2016 is used to group areas in each year in the times series.

## SIMD 2012/2016

Combination of the SIMD measures created in 2012 and 2016. SIMD 2012 is applied to all years before 2017, and SIMD 2016 is applied to years 2017 and onwards.

## WIMD 2014

The Welsh Index of Multiple Deprivation identifies small area concentrations of multiple deprivation across all of Wales, providing a relative measure of deprivation among small areas (data zones). In this report, the WIMD 2014 has been used to group areas in each year in the times series.

## POLAR4

Developed by HEFCE and classifies small areas across the UK into five groups, according to their level of young participation in HE. Each of these groups represents around 20 per cent of young people, and is ranked from quintile 1 (areas with the lowest young participation rates, considered as the most disadvantaged) to quintile 5 (highest young participation rates, considered most advantaged).

## Tariff Group of provider

Providers are grouped as higher, medium or lower tariff based on their average levels of attainment of their accepted applicants (summarised through UCAS Tariff points) in recent cycles. Each group of providers accounted for around a third of all UK 18 year old acceptances in recent cycles.

## Subject group

The JACS3 classification used to classify courses into subject groups. With the introduction of HECoS for the 2019 cycle, new courses that were classified using HECoS instead of JACS have been allocated modelled JACS3 values.

## Subject group (HECoS)

The CAH classification used to categorise HECoS course subject codes into subject groups. A course may be associated with up to 5 individual subject codes and their respective percentage weight. For this analysis, application totals for subject groups have been calculated by apportioning course applications as weighted by subject group.