

June Deadline Analysis: Sex and age

Applicants by sex and age at the 30 June deadline

1.2.1 Applicants by sex: All domiciles Difference between cycle and 2018 cycle

Men
Women



Note: The percentage change is not plotted in the above chart for groups with fewer than 500 applicants in any one cycle.

I.2.2 Applicants by sex: All domiciles

Men
Women



I.2.3 Applicants by age and sex: All domiciles

Age group and sex		2010	2011	2012	2013	2014	2015	2016	2017	2018	2019
Under 18	Women	5,240	5,220	5,260	5,580	6,340	6,450	6,830	7,100	7,910	7,810
	Men	3,730	3,880	4,110	4,510	4,810	5,100	5,210	5,450	5,980	5,960
18	Women	164,510	165,370	161,980	164,560	169,690	179,180	181,320	181,590	181,570	185,670
	Men	131,880	132,200	127,310	129,790	133,980	137,840	139,120	140,360	139,650	142,200
19	Women	69,120	73,320	63,620	69,470	72,330	73,350	74,390	70,300	68,730	69,020
	Men	58,950	62,470	53,450	58,720	59,750	60,790	61,030	57,990	54,960	54,060
20-24	Women	74,590	75,790	68,440	70,460	74,180	72,970	70,590	65,620	63,420	61,580
	Men	61,680	63,100	55,530	56,390	57,620	56,250	54,400	51,120	48,200	46,300
25-29	Women	23,250	22,930	20,440	20,900	22,010	22,490	22,540	19,180	17,770	17,420
	Men	14,210	13,490	11,560	11,720	11,850	11,890	11,460	10,150	9,640	9,240
30-34	Women	13,020	13,180	12,110	12,090	12,500	12,470	12,490	10,870	10,240	10,150
	Men	6,700	6,720	5,770	5,550	5,620	5,480	5,330	4,420	4,280	4,020
35 and over	Women	22,170	21,360	18,840	18,220	19,810	19,880	21,240	18,330	17,670	17,830
	Men	9,510	9,110	8,290	7,960	8,540	8,900	8,950	7,210	6,970	6,770
All ages	Women	371,910	377,180	350,680	361,270	376,860	386,800	389,400	373,000	367,300	369,480
	Men	286,650	290,970	266,020	274,640	282,170	286,240	285,490	276,700	269,660	268,550

I.2.4 Applicants by age and sex: All domiciles

Difference between cycle and 2018 cycle

Age group and sex		2010	2011	2012	2013	2014	2015	2016	2017	2018	2019
Under 18	Women	-34%	-34%	-33%	-29%	-20%	-18%	-14%	-10%	0%	-1%
	Men	-38%	-35%	-31%	-25%	-20%	-15%	-13%	-9%	0%	-0%
18	Women	-9%	-9%	-11%	-9%	-7%	-1%	-0%	0%	0%	2%
	Men	-6%	-5%	-9%	-7%	-4%	-1%	-0%	1%	0%	2%
19	Women	1%	7%	-7%	1%	5%	7%	8%	2%	0%	0%
	Men	7%	14%	-3%	7%	9%	11%	11%	6%	0%	-2%
20-24	Women	18%	20%	8%	11%	17%	15%	11%	3%	0%	-3%
	Men	28%	31%	15%	17%	20%	17%	13%	6%	0%	-4%
25-29	Women	31%	29%	15%	18%	24%	27%	27%	8%	0%	-2%
	Men	47%	40%	20%	22%	23%	23%	19%	5%	0%	-4%
30-34	Women	27%	29%	18%	18%	22%	22%	22%	6%	0%	-1%
	Men	57%	57%	35%	30%	31%	28%	25%	3%	0%	-6%
35 and over	Women	25%	21%	7%	3%	12%	13%	20%	4%	0%	1%
	Men	36%	31%	19%	14%	22%	28%	28%	3%	0%	-3%
All ages	Women	1%	3%	-5%	-2%	3%	5%	6%	2%	0%	1%
	Men	6%	8%	-1%	2%	5%	6%	6%	3%	0%	-0%

Note: The percentage change is not recorded in the above table for groups with fewer than 10 applicants in that cycle or in the 2018 cycle.

I.2.5 Applicants by sex: UK

Difference between cycle and 2018 cycle

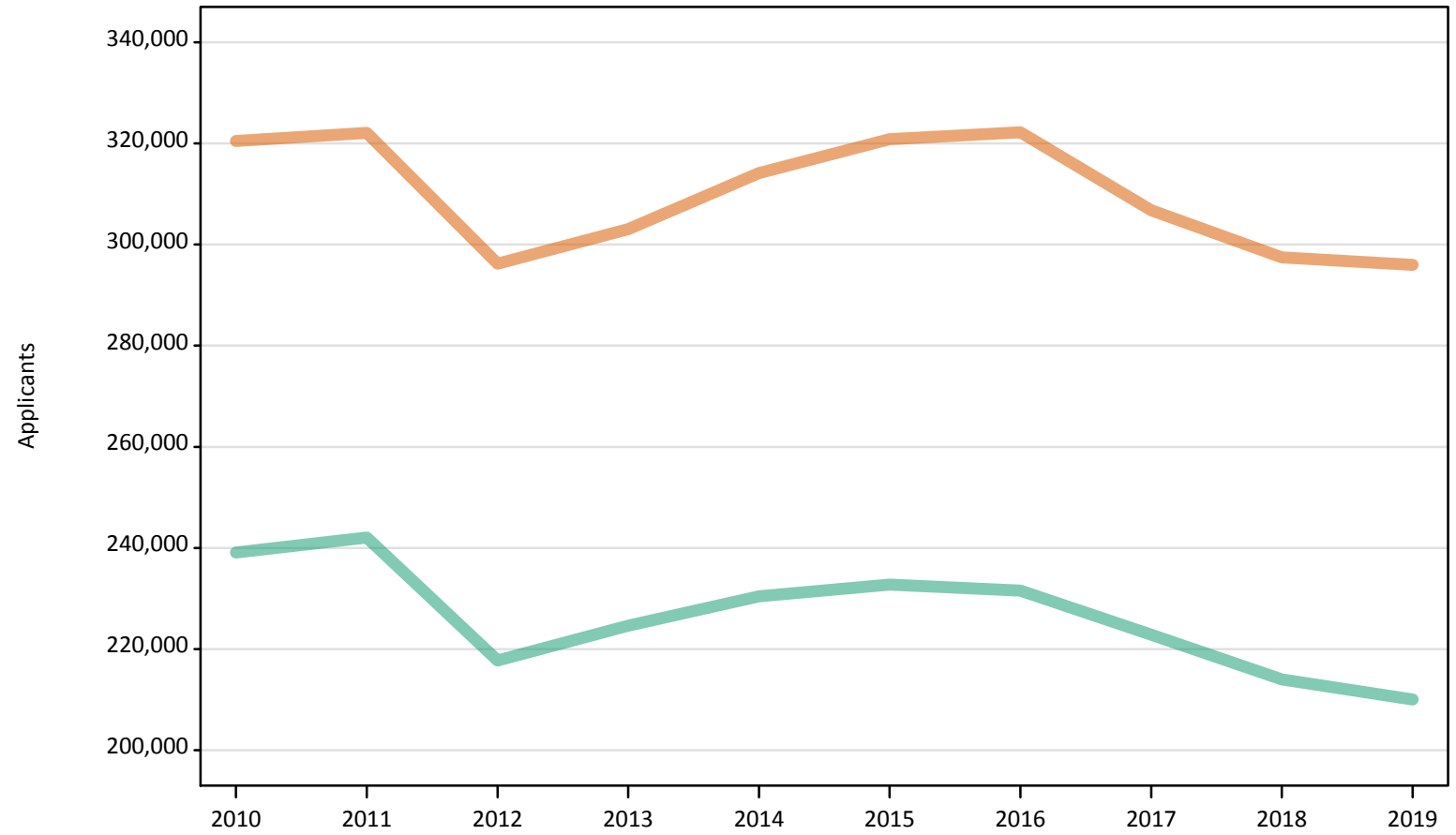
Men
Women



Note: The percentage change is not plotted in the above chart for groups with fewer than 500 applicants in any one cycle.

I.2.6 Applicants by sex: UK

Men
Women



I.2.7 Applicants by age and sex: UK

Age group and sex		2010	2011	2012	2013	2014	2015	2016	2017	2018	2019
Under 18	Women	1,580	1,350	1,050	940	1,000	1,030	1,020	970	960	970
	Men	980	910	780	740	710	780	840	790	770	710
18	Women	149,030	148,350	144,270	144,900	148,460	155,970	156,880	156,920	154,290	156,160
	Men	119,420	119,030	113,150	114,490	117,510	119,880	120,600	121,210	118,620	119,360
19	Women	55,370	58,050	48,510	53,640	55,030	55,440	56,030	52,380	50,340	49,290
	Men	47,040	49,490	41,010	45,830	46,390	47,000	46,710	43,820	40,700	38,570
20-24	Women	59,260	59,930	53,680	55,020	58,040	56,510	54,720	50,730	48,760	46,870
	Men	45,360	46,900	40,450	41,350	42,630	41,670	40,380	37,750	35,460	33,720
25-29	Women	21,130	20,860	18,700	19,130	20,210	20,500	20,720	17,430	16,090	15,690
	Men	11,500	11,090	9,490	9,770	10,070	9,980	9,660	8,500	8,070	7,740
30-34	Women	12,410	12,580	11,570	11,560	12,000	11,940	12,020	10,350	9,750	9,680
	Men	5,850	5,990	5,100	4,930	5,040	4,930	4,820	3,950	3,800	3,570
35 and over	Women	21,690	20,940	18,420	17,850	19,390	19,430	20,800	17,960	17,250	17,340
	Men	8,950	8,650	7,810	7,520	8,130	8,520	8,560	6,850	6,610	6,380
All ages	Women	320,470	322,060	296,200	303,040	314,120	320,820	322,190	306,740	297,440	295,990
	Men	239,090	242,070	217,770	224,630	230,460	232,770	231,560	222,870	214,020	210,050

I.2.8 Applicants by age and sex: UK
 Difference between cycle and 2018 cycle

Age group and sex		2010	2011	2012	2013	2014	2015	2016	2017	2018	2019
Under 18	Women	64%	40%	9%	-2%	4%	7%	6%	1%	0%	1%
	Men	28%	19%	2%	-3%	-7%	2%	10%	3%	0%	-8%
18	Women	-3%	-4%	-6%	-6%	-4%	1%	2%	2%	0%	1%
	Men	1%	0%	-5%	-3%	-1%	1%	2%	2%	0%	1%
19	Women	10%	15%	-4%	7%	9%	10%	11%	4%	0%	-2%
	Men	16%	22%	1%	13%	14%	15%	15%	8%	0%	-5%
20-24	Women	22%	23%	10%	13%	19%	16%	12%	4%	0%	-4%
	Men	28%	32%	14%	17%	20%	18%	14%	6%	0%	-5%
25-29	Women	31%	30%	16%	19%	26%	27%	29%	8%	0%	-2%
	Men	43%	37%	18%	21%	25%	24%	20%	5%	0%	-4%
30-34	Women	27%	29%	19%	19%	23%	22%	23%	6%	0%	-1%
	Men	54%	58%	34%	30%	33%	30%	27%	4%	0%	-6%
35 and over	Women	26%	21%	7%	3%	12%	13%	21%	4%	0%	1%
	Men	35%	31%	18%	14%	23%	29%	29%	4%	0%	-3%
All ages	Women	8%	8%	-0%	2%	6%	8%	8%	3%	0%	-0%
	Men	12%	13%	2%	5%	8%	9%	8%	4%	0%	-2%

Note: The percentage change is not recorded in the above table for groups with fewer than 10 applicants in that cycle or in the 2018 cycle.

I.2.9 Applicants by sex: England

Difference between cycle and 2018 cycle

Men
Women



Note: The percentage change is not plotted in the above chart for groups with fewer than 500 applicants in any one cycle.

I.2.10 Applicants by sex: England

Men
Women



I.2.11 Applicants by age and sex: England

Age group and sex		2010	2011	2012	2013	2014	2015	2016	2017	2018	2019
Under 18	Women	900	730	510	490	550	530	510	490	470	460
	Men	560	510	420	420	420	490	500	420	410	350
18	Women	124,040	124,000	119,920	121,030	124,140	130,690	131,670	132,310	130,570	132,820
	Men	100,610	100,450	95,260	96,510	99,420	101,680	102,750	103,830	101,810	103,530
19	Women	48,560	50,650	41,380	46,420	47,720	48,080	48,100	44,750	42,810	41,840
	Men	41,750	43,860	35,560	40,310	40,750	41,230	40,690	38,210	35,230	33,500
20-24	Women	49,580	49,540	43,650	44,560	47,100	44,610	42,730	38,930	37,200	35,780
	Men	38,090	39,240	32,710	33,070	34,480	33,160	31,740	29,370	27,360	25,920
25-29	Women	17,750	17,390	15,440	15,700	16,500	15,980	16,020	12,860	11,660	11,350
	Men	9,380	8,910	7,560	7,690	7,970	7,550	7,160	6,200	5,740	5,550
30-34	Women	10,700	10,730	9,870	9,770	10,080	9,570	9,540	7,830	7,240	7,090
	Men	4,930	5,030	4,150	4,010	4,090	3,850	3,680	2,900	2,710	2,550
35 and over	Women	18,840	18,240	15,940	15,390	16,740	16,190	17,260	14,260	13,200	13,220
	Men	7,720	7,510	6,720	6,440	6,960	7,130	7,100	5,520	5,190	5,000
All ages	Women	270,370	271,260	246,710	253,350	262,830	265,640	265,810	251,420	243,140	242,540
	Men	203,040	205,510	182,380	188,450	194,100	195,100	193,620	186,440	178,460	176,400

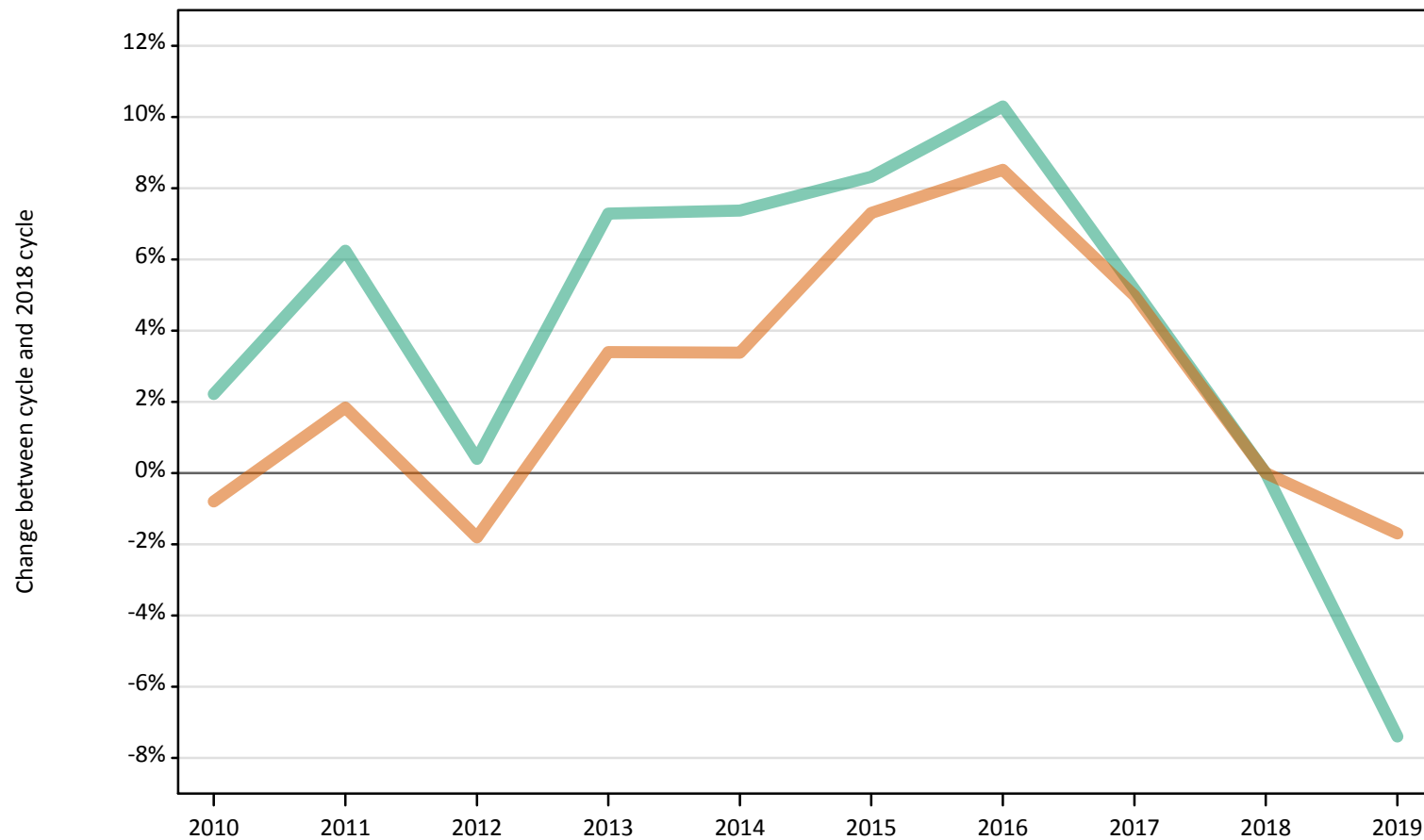
I.2.12 Applicants by age and sex: England
 Difference between cycle and 2018 cycle

Age group and sex		2010	2011	2012	2013	2014	2015	2016	2017	2018	2019
Under 18	Women	89%	53%	8%	4%	16%	11%	7%	3%	0%	-4%
	Men	36%	22%	2%	1%	2%	19%	21%	0%	0%	-15%
18	Women	-5%	-5%	-8%	-7%	-5%	0%	1%	1%	0%	2%
	Men	-1%	-1%	-6%	-5%	-2%	-0%	1%	2%	0%	2%
19	Women	13%	18%	-3%	8%	11%	12%	12%	5%	0%	-2%
	Men	19%	24%	1%	14%	16%	17%	16%	8%	0%	-5%
20-24	Women	33%	33%	17%	20%	27%	20%	15%	5%	0%	-4%
	Men	39%	43%	20%	21%	26%	21%	16%	7%	0%	-5%
25-29	Women	52%	49%	32%	35%	42%	37%	37%	10%	0%	-3%
	Men	63%	55%	32%	34%	39%	32%	25%	8%	0%	-3%
30-34	Women	48%	48%	36%	35%	39%	32%	32%	8%	0%	-2%
	Men	82%	86%	53%	48%	51%	42%	36%	7%	0%	-6%
35 and over	Women	43%	38%	21%	17%	27%	23%	31%	8%	0%	0%
	Men	49%	45%	29%	24%	34%	37%	37%	6%	0%	-4%
All ages	Women	11%	12%	1%	4%	8%	9%	9%	3%	0%	-0%
	Men	14%	15%	2%	6%	9%	9%	8%	4%	0%	-1%

Note: The percentage change is not recorded in the above table for groups with fewer than 10 applicants in that cycle or in the 2018 cycle.

I.2.13 Applicants by sex: Northern Ireland Difference between cycle and 2018 cycle

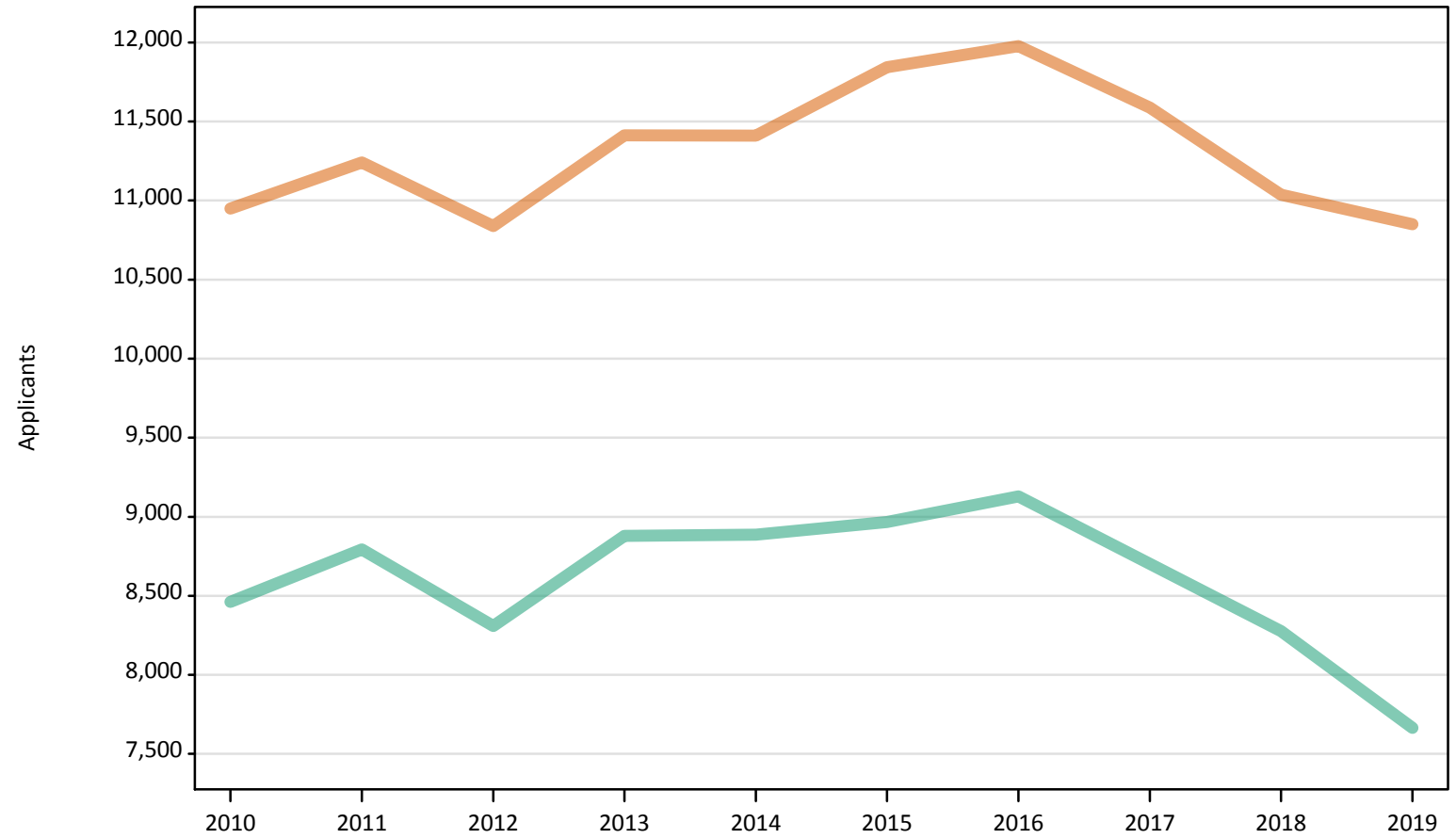
Men
Women



Note: The percentage change is not plotted in the above chart for groups with fewer than 500 applicants in any one cycle.

I.2.14 Applicants by sex: Northern Ireland

Men
Women



I.2.15 Applicants by age and sex: Northern Ireland

Age group and sex		2010	2011	2012	2013	2014	2015	2016	2017	2018	2019
Under 18	Women	30	30	30	20	20	20	30	10	20	20
	Men	20	20	20	20	10	10	10	10	10	20
18	Women	6,850	6,740	6,710	6,540	6,410	6,840	6,710	6,600	6,230	6,070
	Men	5,230	5,220	5,000	5,170	5,090	5,130	5,080	4,950	4,820	4,450
19	Women	1,430	1,720	1,530	1,700	1,690	1,710	2,000	1,920	1,770	1,830
	Men	1,200	1,390	1,230	1,340	1,430	1,460	1,610	1,450	1,390	1,240
20-24	Women	1,710	1,830	1,740	2,010	2,110	2,090	2,060	1,950	1,960	1,840
	Men	1,500	1,590	1,570	1,810	1,810	1,780	1,820	1,840	1,640	1,600
25-29	Women	470	480	430	570	600	580	560	490	480	440
	Men	300	350	280	320	300	310	340	230	230	190
30-34	Women	180	180	180	260	270	280	290	280	250	290
	Men	100	110	110	110	120	140	130	110	90	90
35 and over	Women	290	270	220	320	320	320	330	330	330	360
	Men	120	110	120	130	130	130	130	110	100	80
All ages	Women	10,950	11,240	10,840	11,410	11,410	11,840	11,980	11,590	11,040	10,850
	Men	8,460	8,790	8,310	8,880	8,890	8,970	9,130	8,700	8,280	7,670

I.2.16 Applicants by age and sex: Northern Ireland

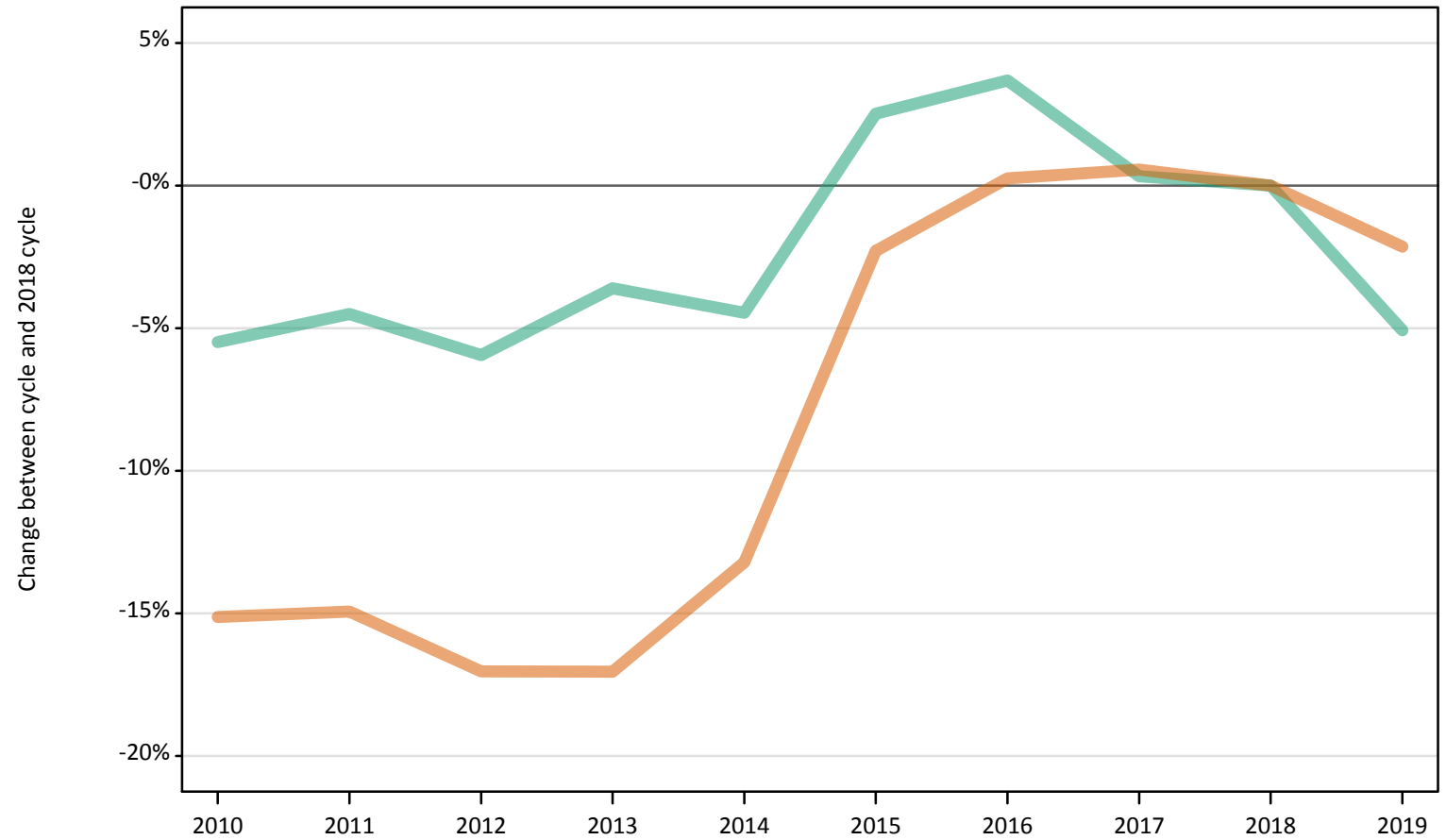
Difference between cycle and 2018 cycle

Age group and sex		2010	2011	2012	2013	2014	2015	2016	2017	2018	2019
Under 18	Women	89%	44%	83%	0%	-6%	17%	50%	-28%	0%	-6%
	Men	109%	100%	55%	73%	0%	9%	27%	18%	0%	73%
18	Women	10%	8%	8%	5%	3%	10%	8%	6%	0%	-3%
	Men	8%	8%	4%	7%	6%	7%	6%	3%	0%	-8%
19	Women	-20%	-3%	-14%	-4%	-5%	-4%	13%	8%	0%	3%
	Men	-14%	0%	-12%	-4%	2%	5%	16%	4%	0%	-11%
20-24	Women	-13%	-7%	-11%	3%	8%	7%	5%	-0%	0%	-6%
	Men	-9%	-3%	-4%	10%	10%	8%	11%	12%	0%	-3%
25-29	Women	-3%	1%	-11%	19%	25%	20%	18%	3%	0%	-9%
	Men	29%	51%	21%	38%	30%	36%	47%	1%	0%	-16%
30-34	Women	-29%	-28%	-28%	5%	7%	13%	15%	14%	0%	14%
	Men	16%	25%	21%	24%	34%	57%	45%	25%	0%	-4%
35 and over	Women	-11%	-18%	-33%	-3%	-2%	-3%	2%	2%	0%	12%
	Men	23%	9%	17%	25%	30%	26%	34%	7%	0%	-20%
All ages	Women	-1%	2%	-2%	3%	3%	7%	9%	5%	0%	-2%
	Men	2%	6%	0%	7%	7%	8%	10%	5%	0%	-7%

Note: The percentage change is not recorded in the above table for groups with fewer than 10 applicants in that cycle or in the 2018 cycle.

I.2.17 Applicants by sex: Scotland
Difference between cycle and 2018 cycle

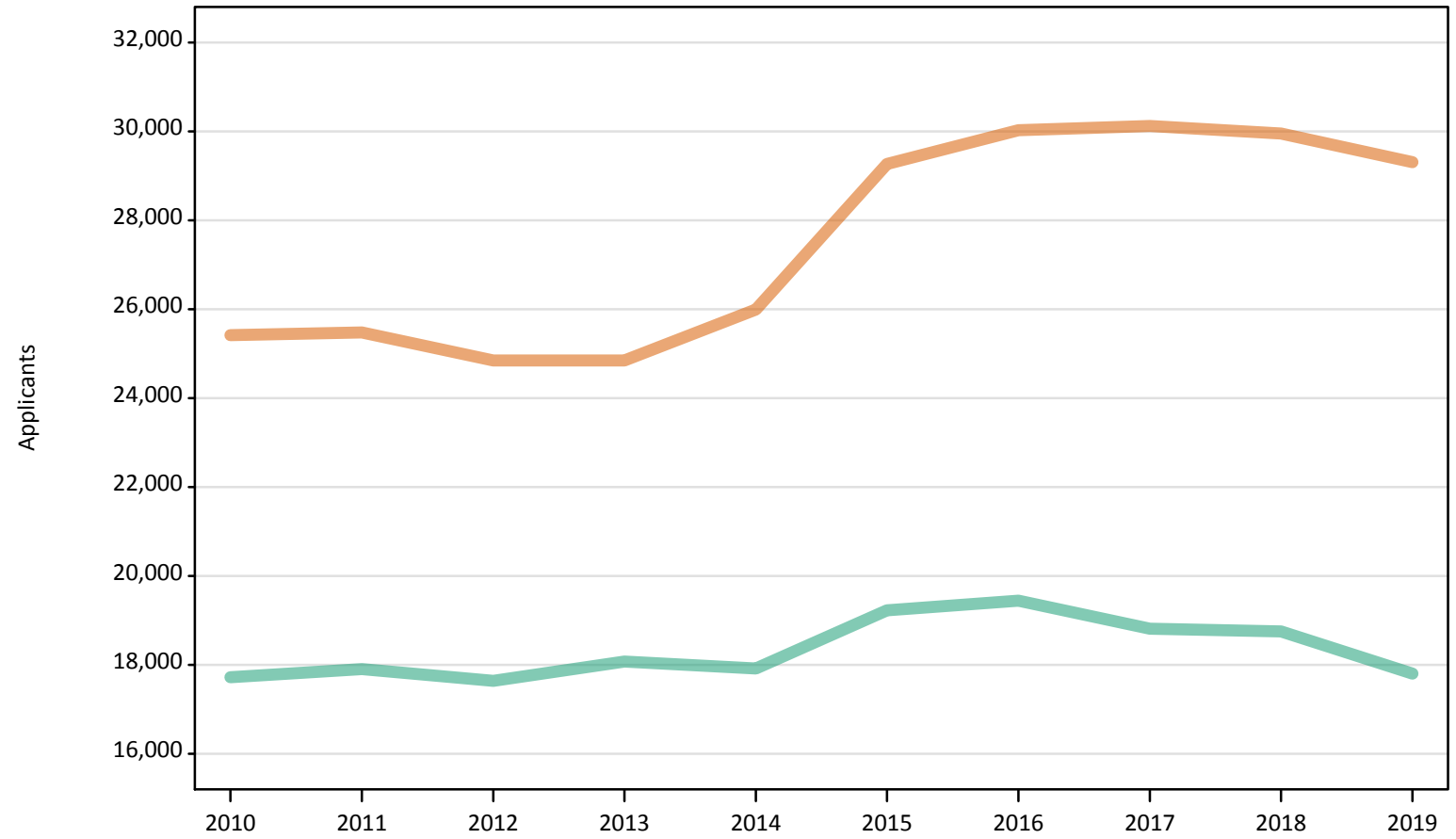
Men
Women



Note: The percentage change is not plotted in the above chart for groups with fewer than 500 applicants in any one cycle.

I.2.18 Applicants by sex: Scotland

Men
Women



I.2.19 Applicants by age and sex: Scotland

Age group and sex		2010	2011	2012	2013	2014	2015	2016	2017	2018	2019
Under 18	Women	620	560	490	410	420	460	470	460	460	470
	Men	380	370	320	280	260	270	310	350	330	330
18	Women	11,320	11,010	11,030	10,920	11,320	11,470	11,490	11,330	10,950	10,820
	Men	8,430	8,350	8,070	8,110	8,040	8,100	7,830	7,580	7,270	6,790
19	Women	3,120	3,270	3,300	3,210	3,210	3,340	3,520	3,460	3,540	3,390
	Men	2,300	2,350	2,380	2,350	2,320	2,410	2,470	2,450	2,500	2,310
20-24	Women	5,570	5,920	5,670	5,960	6,270	7,320	7,380	7,450	7,430	7,040
	Men	3,910	4,200	4,320	4,710	4,570	5,000	5,160	4,980	5,020	4,840
25-29	Women	1,970	1,970	1,900	1,890	2,090	3,000	3,180	3,120	3,020	2,990
	Men	1,340	1,330	1,210	1,310	1,340	1,690	1,770	1,710	1,740	1,670
30-34	Women	1,030	1,120	980	1,020	1,110	1,520	1,600	1,700	1,690	1,710
	Men	600	620	610	620	630	750	820	780	830	800
35 and over	Women	1,790	1,640	1,470	1,440	1,580	2,170	2,400	2,610	2,860	2,880
	Men	770	710	720	690	750	1,010	1,080	990	1,080	1,080
All ages	Women	25,420	25,480	24,850	24,850	26,000	29,270	30,030	30,120	29,950	29,310
	Men	17,730	17,910	17,640	18,080	17,920	19,230	19,450	18,820	18,760	17,800

I.2.20 Applicants by age and sex: Scotland

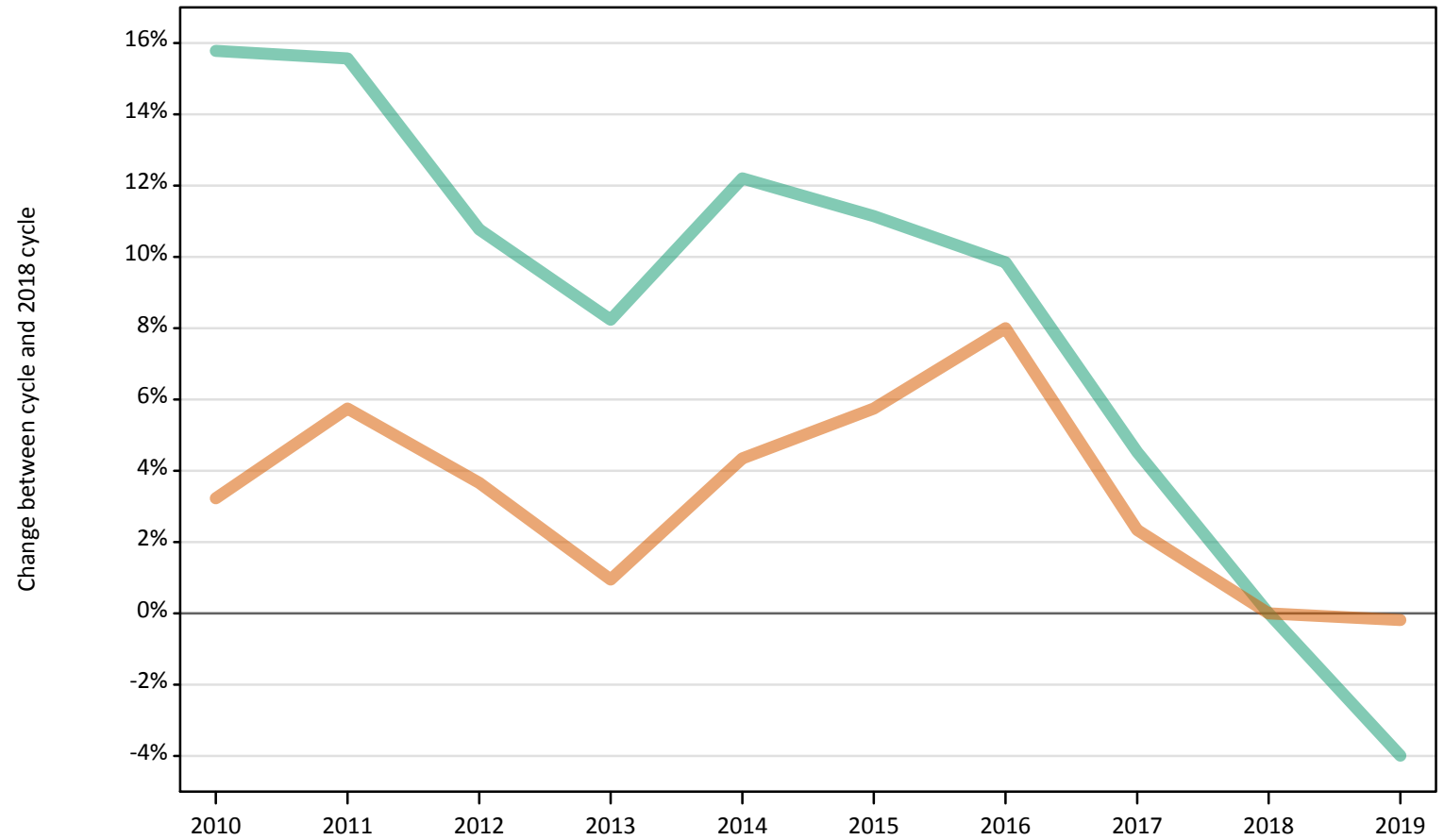
Difference between cycle and 2018 cycle

Age group and sex		2010	2011	2012	2013	2014	2015	2016	2017	2018	2019
Under 18	Women	35%	23%	7%	-10%	-8%	1%	2%	1%	0%	4%
	Men	14%	12%	-2%	-14%	-20%	-18%	-4%	6%	0%	0%
18	Women	3%	1%	1%	-0%	3%	5%	5%	3%	0%	-1%
	Men	16%	15%	11%	12%	11%	12%	8%	4%	0%	-7%
19	Women	-12%	-8%	-7%	-10%	-10%	-6%	-1%	-2%	0%	-4%
	Men	-8%	-6%	-5%	-6%	-7%	-4%	-1%	-2%	0%	-8%
20-24	Women	-25%	-20%	-24%	-20%	-16%	-1%	-1%	0%	0%	-5%
	Men	-22%	-16%	-14%	-6%	-9%	-0%	3%	-1%	0%	-4%
25-29	Women	-35%	-35%	-37%	-38%	-31%	-1%	5%	3%	0%	-1%
	Men	-23%	-24%	-30%	-24%	-23%	-3%	2%	-1%	0%	-4%
30-34	Women	-39%	-34%	-42%	-39%	-35%	-10%	-5%	0%	0%	1%
	Men	-28%	-25%	-26%	-25%	-24%	-9%	-2%	-6%	0%	-4%
35 and over	Women	-38%	-43%	-49%	-50%	-45%	-24%	-16%	-9%	0%	1%
	Men	-29%	-34%	-33%	-36%	-30%	-7%	1%	-8%	0%	0%
All ages	Women	-15%	-15%	-17%	-17%	-13%	-2%	0%	1%	0%	-2%
	Men	-5%	-5%	-6%	-4%	-4%	3%	4%	0%	0%	-5%

Note: The percentage change is not recorded in the above table for groups with fewer than 10 applicants in that cycle or in the 2018 cycle.

I.2.21 Applicants by sex: Wales
Difference between cycle and 2018 cycle

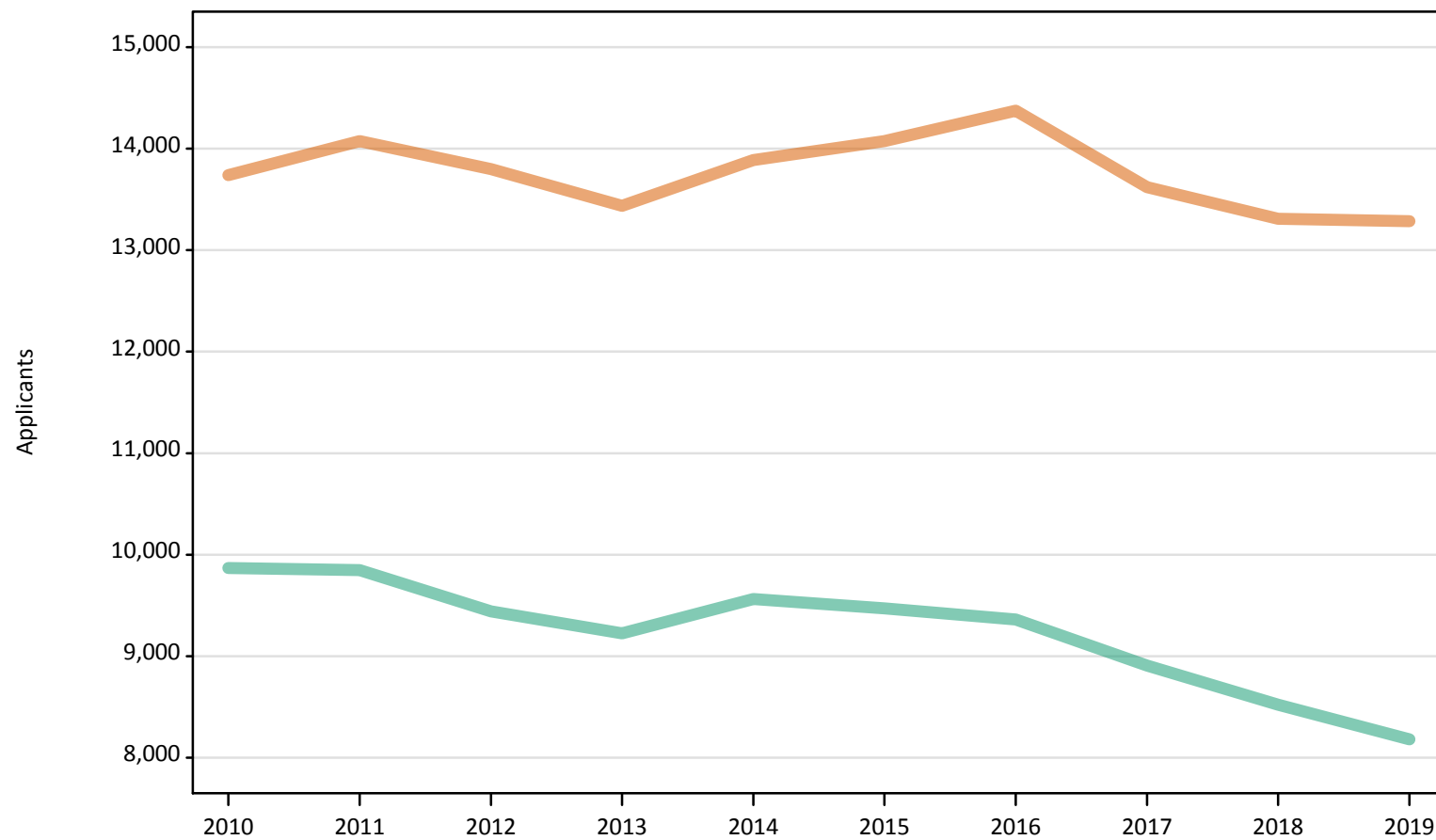
Men
Women



Note: The percentage change is not plotted in the above chart for groups with fewer than 500 applicants in any one cycle.

I.2.22 Applicants by sex: Wales

Men
Women



I.2.23 Applicants by age and sex: Wales

Age group and sex		2010	2011	2012	2013	2014	2015	2016	2017	2018	2019
Under 18	Women	40	30	10	30	20	20	10	10	20	20
	Men	20	20	20	20	20	0	20	10	10	10
18	Women	6,820	6,610	6,610	6,410	6,590	6,970	7,020	6,690	6,540	6,450
	Men	5,150	5,020	4,810	4,710	4,950	4,960	4,930	4,860	4,730	4,600
19	Women	2,270	2,420	2,300	2,320	2,420	2,310	2,420	2,260	2,210	2,220
	Men	1,790	1,890	1,840	1,830	1,890	1,900	1,930	1,710	1,570	1,520
20-24	Women	2,410	2,640	2,610	2,490	2,550	2,490	2,550	2,400	2,180	2,200
	Men	1,880	1,870	1,840	1,770	1,760	1,740	1,660	1,570	1,440	1,370
25-29	Women	940	1,020	930	970	1,020	950	960	960	930	910
	Men	490	500	440	450	460	430	400	350	360	340
30-34	Women	500	550	540	510	550	570	590	540	580	600
	Men	220	230	230	190	200	180	190	160	170	140
35 and over	Women	780	800	790	710	740	760	820	770	860	880
	Men	340	320	260	260	290	260	240	240	240	220
All ages	Women	13,740	14,070	13,800	13,440	13,890	14,070	14,370	13,620	13,310	13,290
	Men	9,870	9,850	9,440	9,230	9,560	9,470	9,360	8,910	8,520	8,180

I.2.24 Applicants by age and sex: Wales
Difference between cycle and 2018 cycle

Age group and sex		2010	2011	2012	2013	2014	2015	2016	2017	2018	2019
Under 18	Women	140%	120%	-13%	67%	0%	40%	-7%	-13%	0%	33%
	Men	50%	50%	25%	67%	25%		25%	-17%	0%	-42%
18	Women	4%	1%	1%	-2%	1%	7%	7%	2%	0%	-1%
	Men	9%	6%	2%	-0%	5%	5%	4%	3%	0%	-3%
19	Women	3%	10%	4%	5%	9%	5%	10%	2%	0%	1%
	Men	14%	21%	17%	17%	20%	21%	23%	9%	0%	-3%
20-24	Women	11%	21%	20%	14%	17%	14%	17%	10%	0%	1%
	Men	30%	30%	28%	23%	22%	20%	15%	9%	0%	-5%
25-29	Women	1%	9%	0%	4%	9%	2%	3%	3%	0%	-2%
	Men	35%	39%	22%	24%	27%	21%	10%	-2%	0%	-7%
30-34	Women	-14%	-5%	-8%	-12%	-4%	-2%	2%	-6%	0%	3%
	Men	29%	36%	35%	11%	18%	8%	15%	-4%	0%	-19%
35 and over	Women	-10%	-7%	-8%	-18%	-14%	-11%	-5%	-11%	0%	2%
	Men	41%	32%	9%	9%	20%	7%	-2%	0%	0%	-9%
All ages	Women	3%	6%	4%	1%	4%	6%	8%	2%	0%	-0%
	Men	16%	16%	11%	8%	12%	11%	10%	5%	0%	-4%

Note: The percentage change is not recorded in the above table for groups with fewer than 10 applicants in that cycle or in the 2018 cycle.

I.2.25 Applicants by sex: EU (excluding UK)
Difference between cycle and 2018 cycle

Men
Women



Note: The percentage change is not plotted in the above chart for groups with fewer than 500 applicants in any one cycle.

I.2.26 Applicants by sex: EU (excluding UK)

Men
Women



I.2.27 Applicants by age and sex: EU (excluding UK)

Age group and sex		2010	2011	2012	2013	2014	2015	2016	2017	2018	2019
Under 18	Women	1,860	1,920	1,880	1,910	2,180	2,400	2,470	2,530	2,650	2,720
	Men	1,040	1,160	1,070	1,200	1,270	1,530	1,580	1,590	1,700	1,740
18	Women	7,790	8,360	7,890	8,370	8,890	10,030	10,950	10,420	10,910	11,250
	Men	5,190	5,410	5,370	5,550	5,980	6,660	7,090	7,060	7,330	7,400
19	Women	6,890	7,770	6,970	7,400	7,920	8,490	9,290	8,770	8,990	9,270
	Men	5,310	6,160	5,220	5,500	5,490	5,890	6,350	6,060	6,110	6,240
20-24	Women	7,230	7,420	5,860	6,210	6,360	6,650	6,830	6,220	6,260	6,220
	Men	6,770	6,620	5,080	5,100	5,250	5,080	5,130	4,840	4,430	4,310
25-29	Women	1,030	1,020	770	770	790	850	850	690	650	580
	Men	1,030	970	680	650	600	700	680	530	560	460
30-34	Women	240	250	210	200	190	200	160	160	150	140
	Men	270	240	200	190	170	160	150	140	150	110
35 and over	Women	180	160	160	140	180	180	180	120	130	140
	Men	190	160	150	160	140	130	140	120	120	90
All ages	Women	25,210	26,890	23,730	25,010	26,500	28,790	30,720	28,910	29,740	30,310
	Men	19,800	20,710	17,780	18,360	18,880	20,140	21,120	20,350	20,380	20,350

I.2.28 Applicants by age and sex: EU (excluding UK)

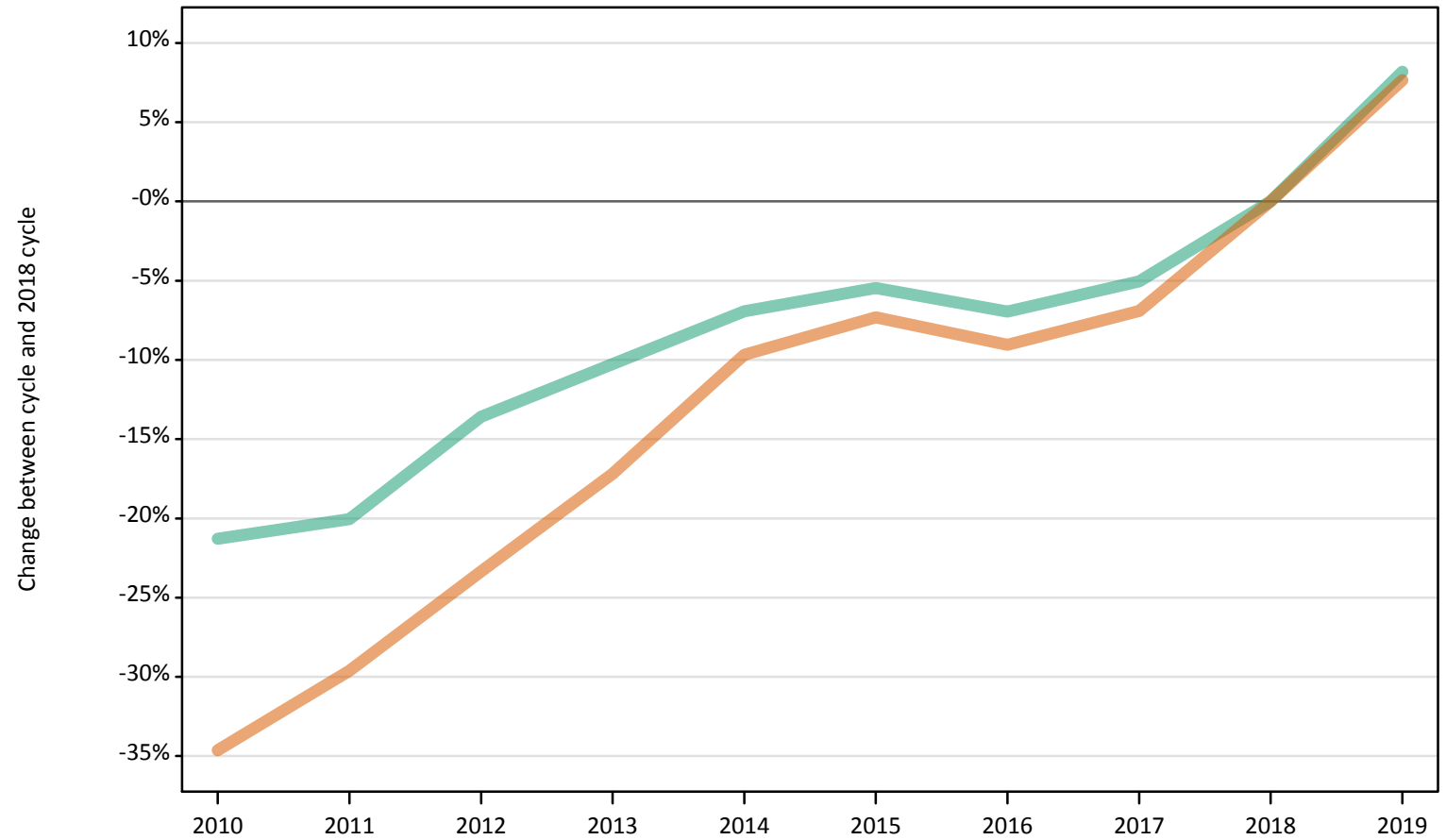
Difference between cycle and 2018 cycle

Age group and sex		2010	2011	2012	2013	2014	2015	2016	2017	2018	2019
Under 18	Women	-30%	-28%	-29%	-28%	-18%	-10%	-7%	-5%	0%	2%
	Men	-39%	-32%	-37%	-29%	-25%	-10%	-7%	-6%	0%	3%
18	Women	-29%	-23%	-28%	-23%	-19%	-8%	0%	-5%	0%	3%
	Men	-29%	-26%	-27%	-24%	-18%	-9%	-3%	-4%	0%	1%
19	Women	-23%	-14%	-22%	-18%	-12%	-6%	3%	-2%	0%	3%
	Men	-13%	1%	-14%	-10%	-10%	-4%	4%	-1%	0%	2%
20-24	Women	15%	18%	-6%	-1%	2%	6%	9%	-1%	0%	-1%
	Men	53%	50%	15%	15%	19%	15%	16%	9%	0%	-3%
25-29	Women	58%	55%	17%	18%	21%	29%	30%	5%	0%	-11%
	Men	84%	73%	21%	16%	6%	25%	21%	-5%	0%	-17%
30-34	Women	66%	70%	41%	39%	28%	35%	6%	8%	0%	-8%
	Men	77%	53%	32%	24%	9%	1%	-1%	-8%	0%	-30%
35 and over	Women	38%	26%	27%	10%	37%	43%	39%	-5%	0%	9%
	Men	64%	39%	33%	41%	18%	12%	25%	0%	0%	-20%
All ages	Women	-15%	-10%	-20%	-16%	-11%	-3%	3%	-3%	0%	2%
	Men	-3%	2%	-13%	-10%	-7%	-1%	4%	-0%	0%	-0%

Note: The percentage change is not recorded in the above table for groups with fewer than 10 applicants in that cycle or in the 2018 cycle.

I.2.29 Applicants by sex: Not EU
Difference between cycle and 2018 cycle

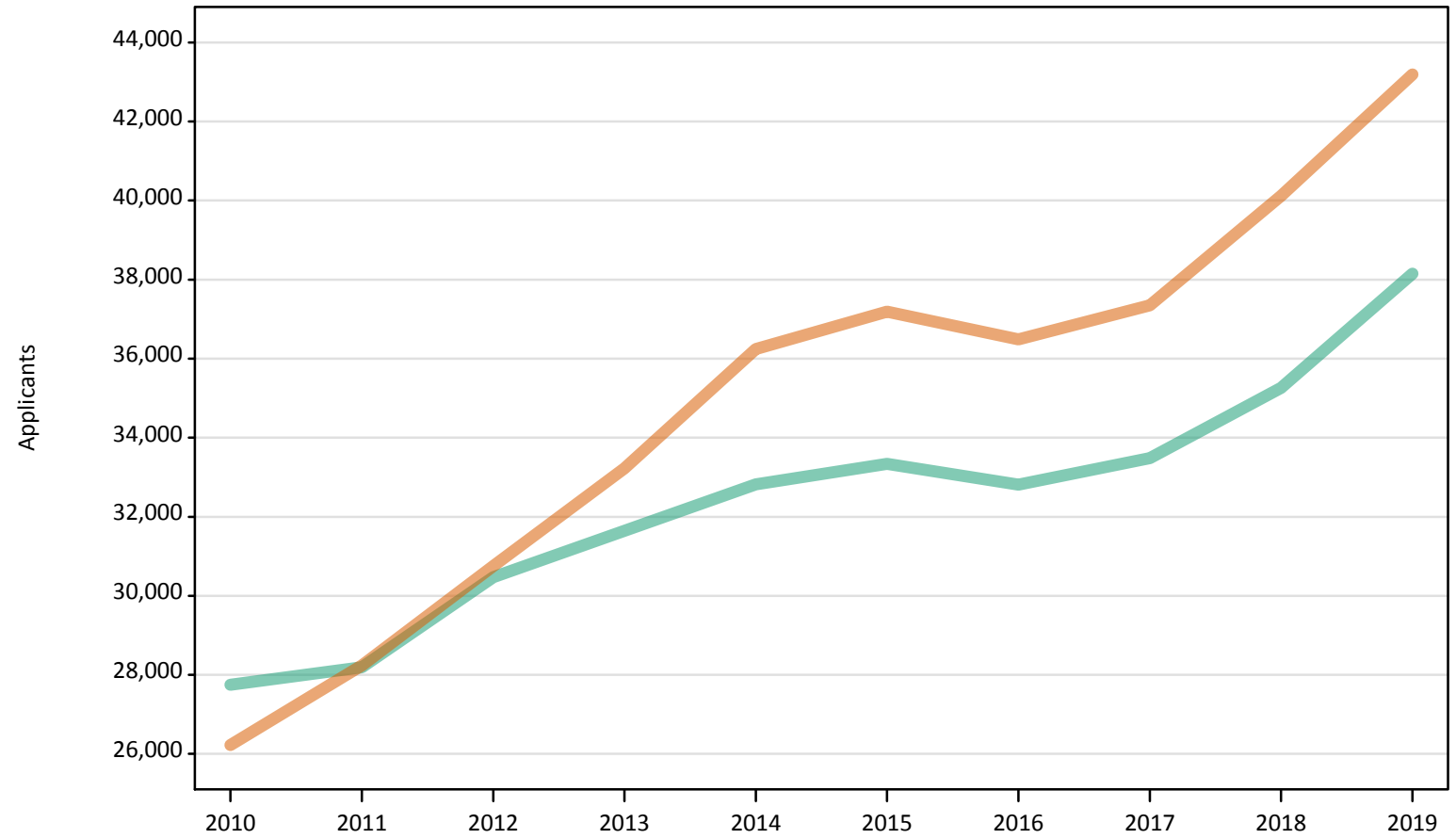
Men
Women



Note: The percentage change is not plotted in the above chart for groups with fewer than 500 applicants in any one cycle.

I.2.30 Applicants by sex: Not EU

Men
Women



I.2.31 Applicants by age and sex: Not EU

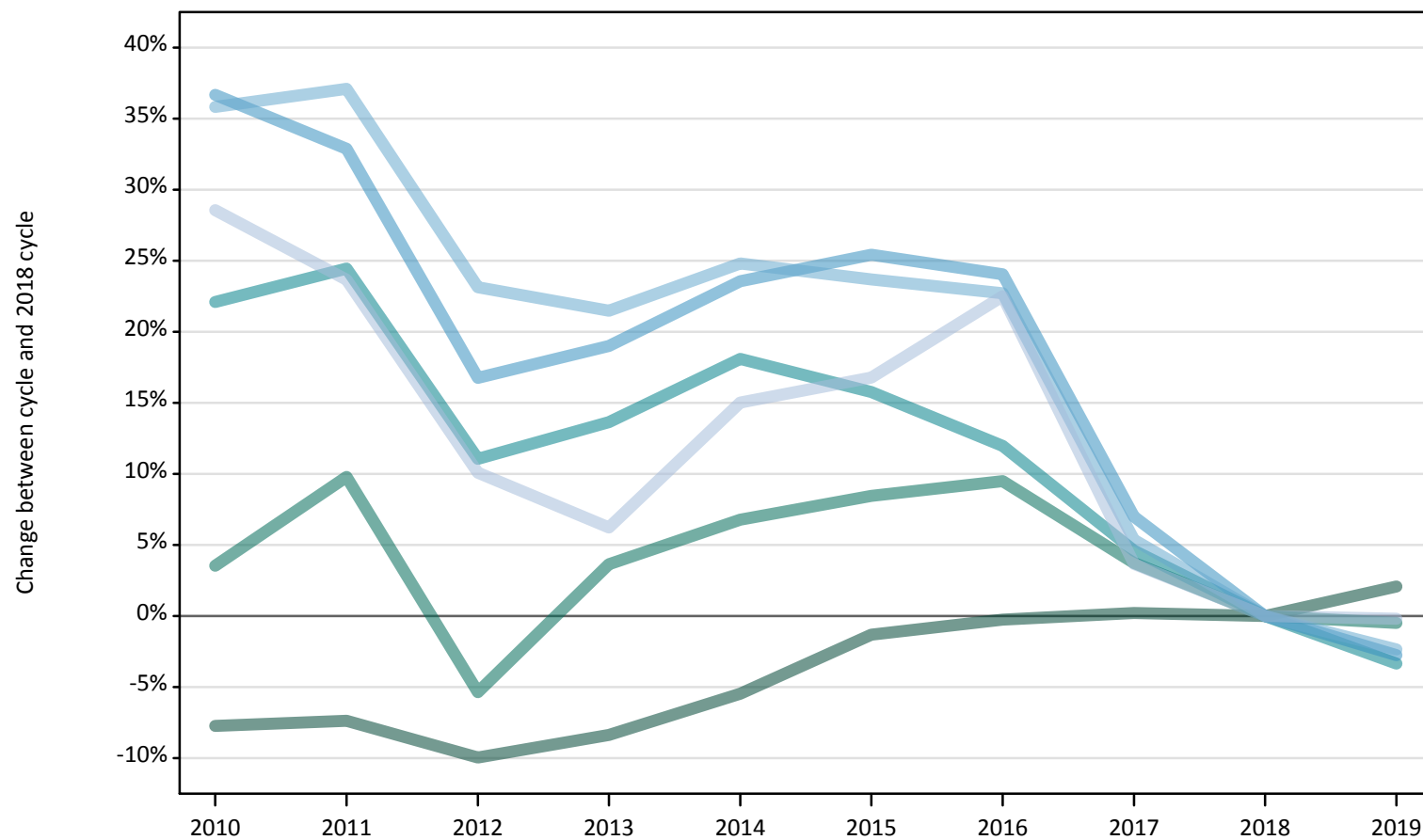
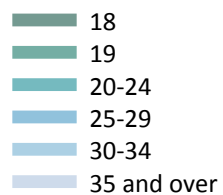
Age group and sex		2010	2011	2012	2013	2014	2015	2016	2017	2018	2019
Under 18	Women	1,810	1,960	2,340	2,720	3,150	3,030	3,340	3,600	4,290	4,130
	Men	1,720	1,800	2,260	2,570	2,820	2,800	2,790	3,070	3,520	3,510
18	Women	7,700	8,660	9,820	11,300	12,350	13,190	13,490	14,250	16,360	18,270
	Men	7,270	7,760	8,800	9,750	10,500	11,290	11,430	12,090	13,700	15,450
19	Women	6,860	7,500	8,140	8,420	9,380	9,420	9,070	9,150	9,400	10,470
	Men	6,600	6,820	7,220	7,390	7,870	7,900	7,980	8,110	8,150	9,250
20-24	Women	8,100	8,450	8,900	9,230	9,790	9,810	9,050	8,680	8,400	8,490
	Men	9,550	9,570	10,000	9,930	9,740	9,500	8,890	8,530	8,310	8,270
25-29	Women	1,090	1,060	970	1,000	1,020	1,140	970	1,060	1,030	1,150
	Men	1,680	1,440	1,390	1,310	1,190	1,200	1,120	1,120	1,010	1,030
30-34	Women	370	360	340	320	310	340	310	370	340	340
	Men	580	490	470	430	410	400	360	330	320	350
35 and over	Women	300	260	250	230	240	260	260	250	290	350
	Men	370	300	330	270	280	250	250	250	250	290
All ages	Women	26,230	28,240	30,750	33,220	36,240	37,190	36,490	37,350	40,120	43,190
	Men	27,750	28,190	30,470	31,650	32,820	33,340	32,810	33,480	35,260	38,150

I.2.32 Applicants by age and sex: Not EU
Difference between cycle and 2018 cycle

Age group and sex		2010	2011	2012	2013	2014	2015	2016	2017	2018	2019
Under 18	Women	-58%	-54%	-46%	-37%	-27%	-29%	-22%	-16%	0%	-4%
	Men	-51%	-49%	-36%	-27%	-20%	-20%	-21%	-13%	0%	-0%
18	Women	-53%	-47%	-40%	-31%	-25%	-19%	-18%	-13%	0%	12%
	Men	-47%	-43%	-36%	-29%	-23%	-18%	-17%	-12%	0%	13%
19	Women	-27%	-20%	-13%	-10%	-0%	0%	-4%	-3%	0%	11%
	Men	-19%	-16%	-11%	-9%	-3%	-3%	-2%	-1%	0%	13%
20-24	Women	-4%	1%	6%	10%	17%	17%	8%	3%	0%	1%
	Men	15%	15%	20%	19%	17%	14%	7%	3%	0%	-1%
25-29	Women	6%	3%	-6%	-3%	-1%	11%	-6%	3%	0%	12%
	Men	66%	42%	38%	30%	18%	19%	11%	10%	0%	2%
30-34	Women	7%	4%	-3%	-6%	-10%	-2%	-10%	6%	0%	-0%
	Men	80%	53%	46%	33%	28%	23%	11%	1%	0%	7%
35 and over	Women	3%	-10%	-14%	-21%	-16%	-9%	-11%	-15%	0%	19%
	Men	49%	21%	32%	10%	12%	0%	1%	-1%	0%	19%
All ages	Women	-35%	-30%	-23%	-17%	-10%	-7%	-9%	-7%	0%	8%
	Men	-21%	-20%	-14%	-10%	-7%	-5%	-7%	-5%	0%	8%

Note: The percentage change is not recorded in the above table for groups with fewer than 10 applicants in that cycle or in the 2018 cycle.

I.2.33 Applicants by age: All domiciles Difference between cycle and 2018 cycle



Note: The percentage change is not plotted in the above chart for groups with fewer than 500 applicants in any one cycle.

I.2.34 Applicants by age: All domiciles

Domicile and age group		2010	2011	2012	2013	2014	2015	2016	2017	2018	2019
All domiciles	Under 18	8,970	9,100	9,380	10,090	11,140	11,550	12,040	12,550	13,880	13,770
	18	296,390	297,570	289,300	294,360	303,670	317,020	320,440	321,950	321,220	327,870
	19	128,070	135,790	117,070	128,180	132,080	134,140	135,420	128,290	123,680	123,080
	20-24	136,280	138,890	123,960	126,840	131,800	129,220	124,980	116,750	111,610	107,880
	25-29	37,460	36,420	32,000	32,620	33,870	34,380	34,000	29,330	27,410	26,660
	30-34	19,720	19,900	17,880	17,640	18,120	17,960	17,810	15,300	14,520	14,180
	35 and over	31,680	30,470	27,130	26,180	28,350	28,780	30,190	25,550	24,640	24,590
	All ages	658,560	668,150	616,700	635,910	659,030	673,040	674,890	649,700	636,960	638,030

I.2.35 Applicants by age: All domiciles

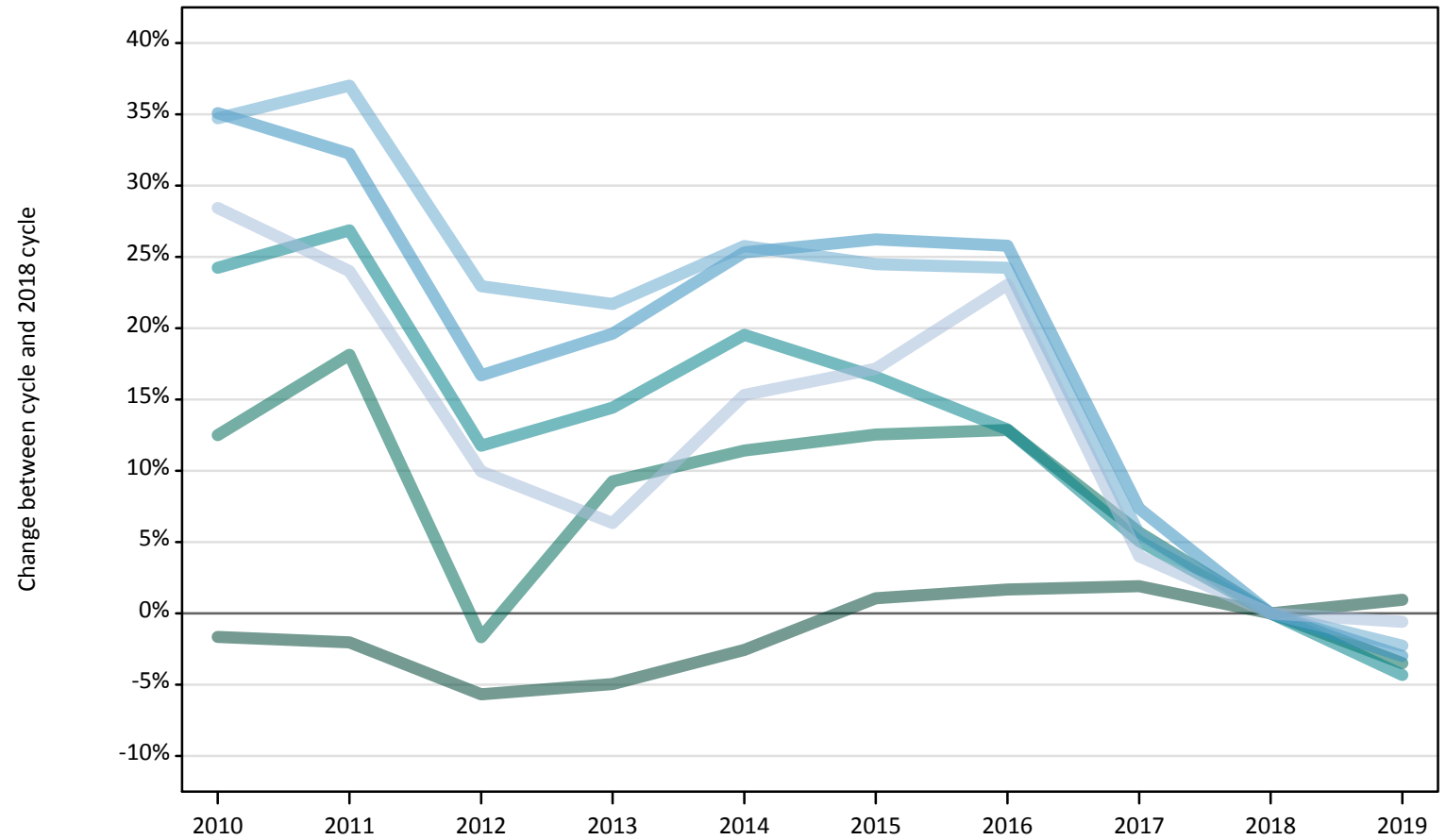
Difference between cycle and 2018 cycle

Domicile and age group		2010	2011	2012	2013	2014	2015	2016	2017	2018	2019
All domiciles	Under 18	-35%	-34%	-32%	-27%	-20%	-17%	-13%	-10%	0%	-1%
	18	-8%	-7%	-10%	-8%	-5%	-1%	-0%	0%	0%	2%
	19	4%	10%	-5%	4%	7%	8%	9%	4%	0%	-0%
	20-24	22%	24%	11%	14%	18%	16%	12%	5%	0%	-3%
	25-29	37%	33%	17%	19%	24%	25%	24%	7%	0%	-3%
	30-34	36%	37%	23%	21%	25%	24%	23%	5%	0%	-2%
	35 and over	29%	24%	10%	6%	15%	17%	23%	4%	0%	-0%
	All ages	3%	5%	-3%	-0%	3%	6%	6%	2%	0%	0%

Note: The percentage change is not recorded in the above table for groups with fewer than 10 applicants in that cycle or in the 2018 cycle.

I.2.36 Applicants by age: UK
Difference between cycle and 2018 cycle

- 18
- 19
- 20-24
- 25-29
- 30-34
- 35 and over



Note: The percentage change is not plotted in the above chart for groups with fewer than 500 applicants in any one cycle.

I.2.37 Applicants by age: UK

Domicile and age group		2010	2011	2012	2013	2014	2015	2016	2017	2018	2019
UK	Under 18	2,560	2,260	1,830	1,680	1,710	1,800	1,860	1,760	1,730	1,670
	18	268,440	267,390	257,420	259,390	265,960	275,850	277,480	278,130	272,920	275,520
	19	102,410	107,540	89,520	99,470	101,420	102,450	102,740	96,200	91,030	87,860
	20-24	104,630	106,830	94,130	96,370	100,660	98,180	95,090	88,480	84,220	80,590
	25-29	32,630	31,940	28,190	28,900	30,270	30,490	30,380	25,930	24,150	23,440
	30-34	18,260	18,570	16,660	16,490	17,040	16,870	16,840	14,300	13,550	13,250
	35 and over	30,640	29,590	26,230	25,370	27,510	27,950	29,360	24,810	23,860	23,720
	All ages	559,570	564,120	513,970	527,670	544,580	553,590	553,740	529,620	511,460	506,040

I.2.38 Applicants by age: UK

Difference between cycle and 2018 cycle

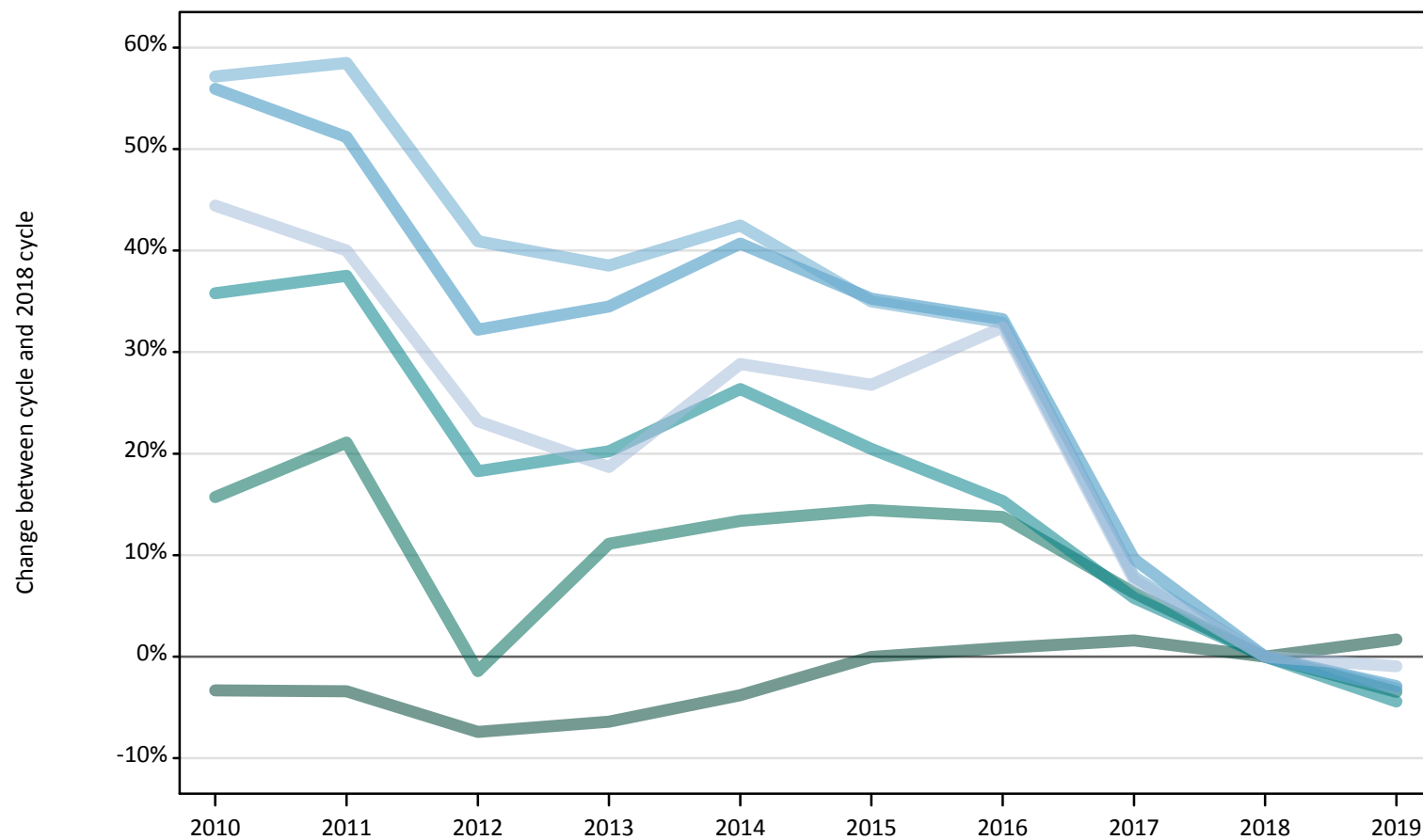
Domicile and age group		2010	2011	2012	2013	2014	2015	2016	2017	2018	2019
UK	Under 18	48%	31%	6%	-3%	-1%	4%	8%	2%	0%	-3%
	18	-2%	-2%	-6%	-5%	-3%	1%	2%	2%	0%	1%
	19	12%	18%	-2%	9%	11%	13%	13%	6%	0%	-3%
	20-24	24%	27%	12%	14%	20%	17%	13%	5%	0%	-4%
	25-29	35%	32%	17%	20%	25%	26%	26%	7%	0%	-3%
	30-34	35%	37%	23%	22%	26%	24%	24%	6%	0%	-2%
	35 and over	28%	24%	10%	6%	15%	17%	23%	4%	0%	-1%
	All ages	9%	10%	0%	3%	6%	8%	8%	4%	0%	-1%

Note: The percentage change is not recorded in the above table for groups with fewer than 10 applicants in that cycle or in the 2018 cycle.

I.2.39 Applicants by age: England

Difference between cycle and 2018 cycle

- 18
- 19
- 20-24
- 25-29
- 30-34
- 35 and over



Note: The percentage change is not plotted in the above chart for groups with fewer than 500 applicants in any one cycle.

I.2.40 Applicants by age: England

Domicile and age group		2010	2011	2012	2013	2014	2015	2016	2017	2018	2019
England	Under 18	1,460	1,230	940	910	970	1,020	1,010	900	890	810
	18	224,650	224,440	215,180	217,540	223,560	232,360	234,420	236,140	232,380	236,350
	19	90,310	94,500	76,940	86,730	88,470	89,320	88,790	82,960	78,040	75,340
	20-24	87,670	88,790	76,360	77,620	81,580	77,770	74,460	68,300	64,560	61,710
	25-29	27,130	26,300	23,000	23,390	24,470	23,530	23,180	19,070	17,400	16,890
	30-34	15,630	15,760	14,020	13,780	14,170	13,430	13,220	10,730	9,950	9,630
	35 and over	26,560	25,750	22,660	21,830	23,690	23,320	24,360	19,780	18,390	18,220
	All ages	473,400	476,770	429,100	441,790	456,920	460,740	459,430	437,860	421,610	418,940

I.2.41 Applicants by age: England

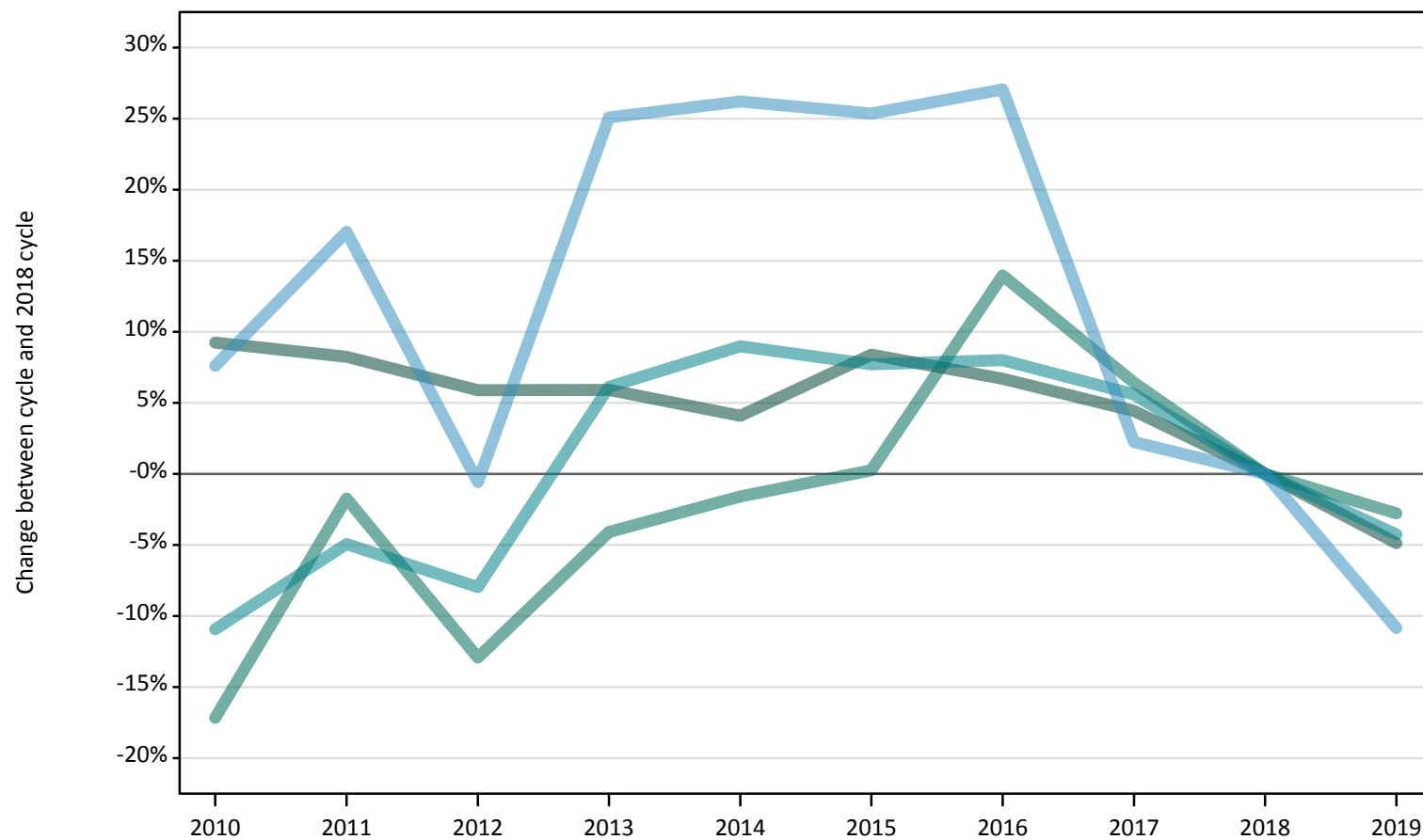
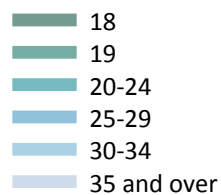
Difference between cycle and 2018 cycle

Domicile and age group		2010	2011	2012	2013	2014	2015	2016	2017	2018	2019
England	Under 18	64%	39%	5%	2%	9%	15%	13%	2%	0%	-9%
	18	-3%	-3%	-7%	-6%	-4%	-0%	1%	2%	0%	2%
	19	16%	21%	-1%	11%	13%	14%	14%	6%	0%	-3%
	20-24	36%	38%	18%	20%	26%	20%	15%	6%	0%	-4%
	25-29	56%	51%	32%	34%	41%	35%	33%	10%	0%	-3%
	30-34	57%	58%	41%	39%	42%	35%	33%	8%	0%	-3%
	35 and over	44%	40%	23%	19%	29%	27%	32%	8%	0%	-1%
	All ages	12%	13%	2%	5%	8%	9%	9%	4%	0%	-1%

Note: The percentage change is not recorded in the above table for groups with fewer than 10 applicants in that cycle or in the 2018 cycle.

I.2.42 Applicants by age: Northern Ireland

Difference between cycle and 2018 cycle



Note: The percentage change is not plotted in the above chart for groups with fewer than 500 applicants in any one cycle.

I.2.43 Applicants by age: Northern Ireland

Domicile and age group		2010	2011	2012	2013	2014	2015	2016	2017	2018	2019
Northern Ireland	Under 18	60	50	50	40	30	30	40	30	30	40
	18	12,070	11,960	11,700	11,700	11,500	11,980	11,790	11,540	11,050	10,510
	19	2,620	3,110	2,760	3,040	3,120	3,170	3,610	3,370	3,170	3,080
	20-24	3,200	3,420	3,310	3,820	3,920	3,870	3,880	3,800	3,600	3,440
	25-29	760	830	710	890	900	890	900	730	710	630
	30-34	280	290	290	370	390	420	420	400	340	370
	35 and over	410	380	340	440	450	440	470	440	430	440
	All ages	19,410	20,030	19,150	20,290	20,300	20,810	21,110	20,290	19,310	18,520

I.2.44 Applicants by age: Northern Ireland

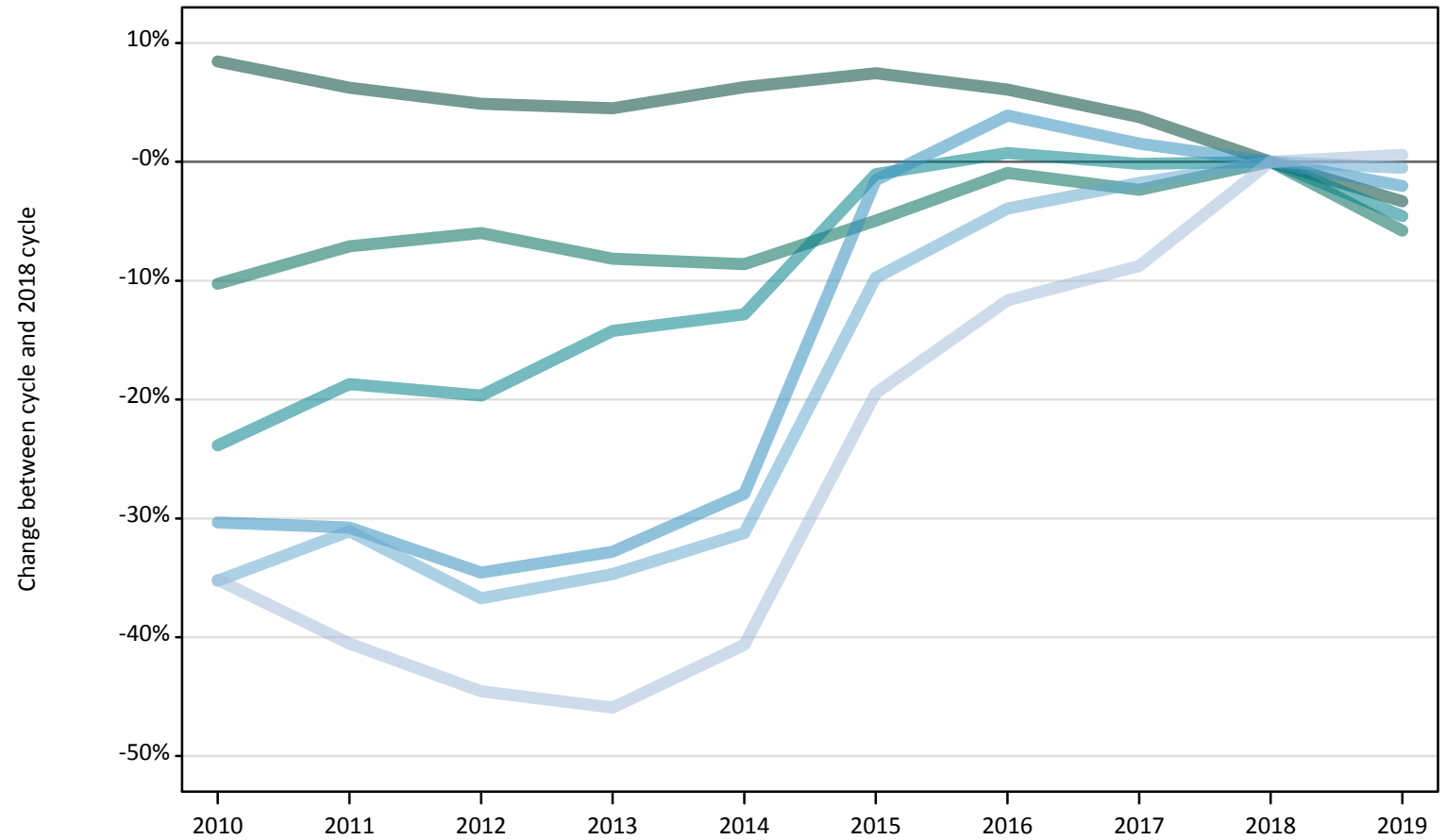
Difference between cycle and 2018 cycle

Domicile and age group		2010	2011	2012	2013	2014	2015	2016	2017	2018	2019
Northern Ireland	Under 18	97%	66%	72%	28%	-3%	14%	41%	-10%	0%	24%
	18	9%	8%	6%	6%	4%	8%	7%	4%	0%	-5%
	19	-17%	-2%	-13%	-4%	-2%	0%	14%	6%	0%	-3%
	20-24	-11%	-5%	-8%	6%	9%	8%	8%	6%	0%	-4%
	25-29	8%	17%	-1%	25%	26%	25%	27%	2%	0%	-11%
	30-34	-17%	-14%	-15%	10%	14%	25%	23%	17%	0%	9%
	35 and over	-3%	-12%	-21%	4%	6%	4%	9%	3%	0%	4%
	All ages	0%	4%	-1%	5%	5%	8%	9%	5%	0%	-4%

Note: The percentage change is not recorded in the above table for groups with fewer than 10 applicants in that cycle or in the 2018 cycle.

I.2.45 Applicants by age: Scotland
Difference between cycle and 2018 cycle

- 18
- 19
- 20-24
- 25-29
- 30-34
- 35 and over



Note: The percentage change is not plotted in the above chart for groups with fewer than 500 applicants in any one cycle.

I.2.46 Applicants by age: Scotland

Domicile and age group		2010	2011	2012	2013	2014	2015	2016	2017	2018	2019
Scotland	Under 18	990	930	810	690	680	730	780	810	780	800
	18	19,760	19,350	19,100	19,030	19,360	19,570	19,320	18,900	18,220	17,610
	19	5,430	5,620	5,690	5,550	5,530	5,750	5,990	5,900	6,050	5,700
	20-24	9,480	10,120	10,000	10,680	10,850	12,320	12,540	12,430	12,450	11,880
	25-29	3,310	3,290	3,110	3,200	3,430	4,680	4,940	4,830	4,760	4,660
	30-34	1,630	1,740	1,590	1,650	1,730	2,270	2,420	2,470	2,520	2,510
	35 and over	2,550	2,340	2,180	2,130	2,340	3,170	3,480	3,590	3,940	3,960
	All ages	43,150	43,390	42,490	42,930	43,910	48,490	49,470	48,940	48,710	47,110

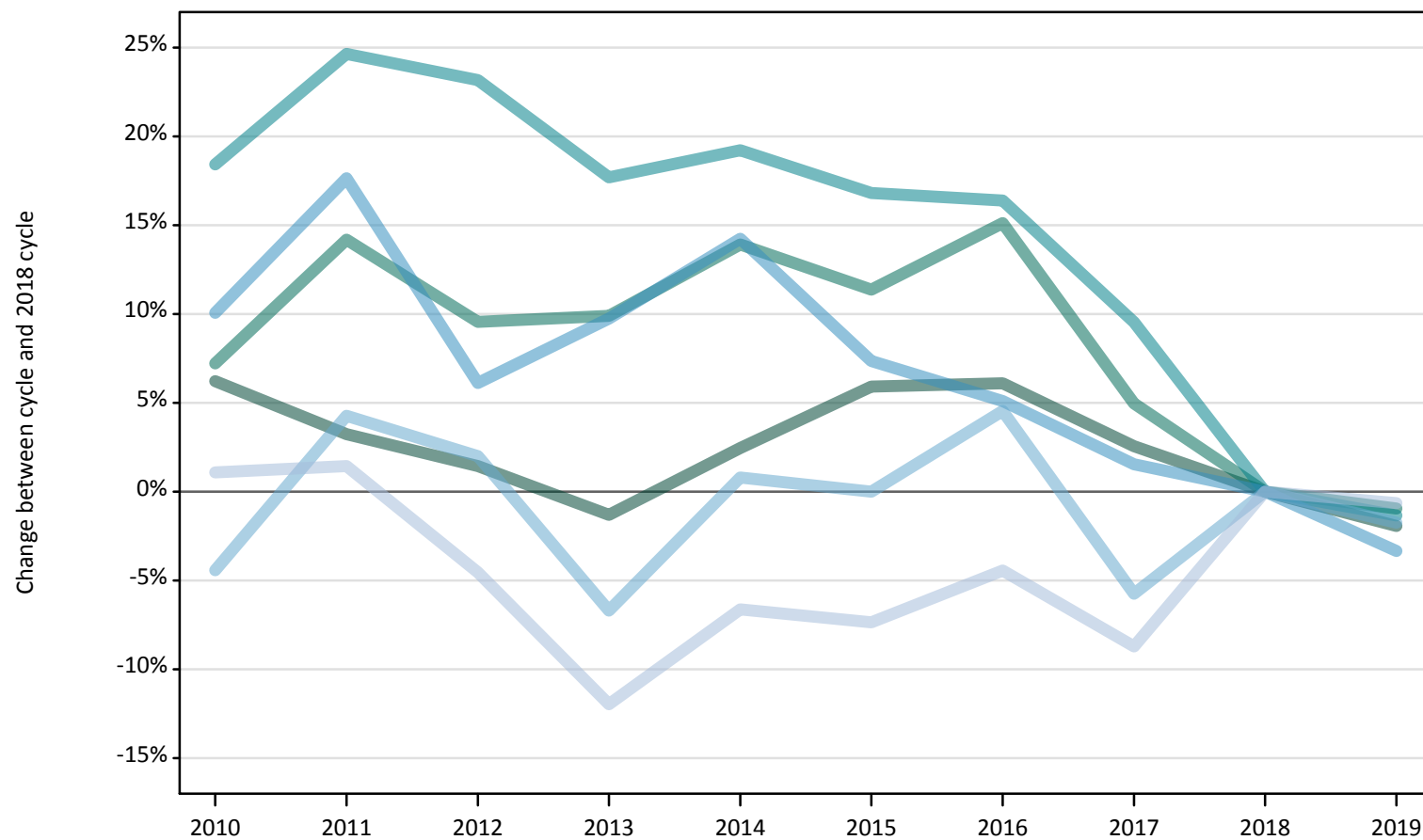
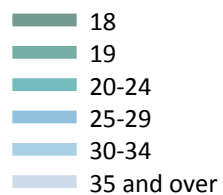
I.2.47 Applicants by age: Scotland

Difference between cycle and 2018 cycle

Domicile and age group		2010	2011	2012	2013	2014	2015	2016	2017	2018	2019
Scotland	Under 18	26%	19%	4%	-12%	-13%	-7%	-0%	3%	0%	2%
	18	8%	6%	5%	4%	6%	7%	6%	4%	0%	-3%
	19	-10%	-7%	-6%	-8%	-9%	-5%	-1%	-2%	0%	-6%
	20-24	-24%	-19%	-20%	-14%	-13%	-1%	1%	-0%	0%	-5%
	25-29	-30%	-31%	-35%	-33%	-28%	-2%	4%	2%	0%	-2%
	30-34	-35%	-31%	-37%	-35%	-31%	-10%	-4%	-2%	0%	-1%
	35 and over	-35%	-41%	-45%	-46%	-41%	-19%	-12%	-9%	0%	1%
	All ages	-11%	-11%	-13%	-12%	-10%	-0%	2%	0%	0%	-3%

Note: The percentage change is not recorded in the above table for groups with fewer than 10 applicants in that cycle or in the 2018 cycle.

I.2.48 Applicants by age: Wales Difference between cycle and 2018 cycle



Note: The percentage change is not plotted in the above chart for groups with fewer than 500 applicants in any one cycle.

I.2.49 Applicants by age: Wales

Domicile and age group		2010	2011	2012	2013	2014	2015	2016	2017	2018	2019
Wales	Under 18	50	50	30	50	30	20	30	20	30	30
	18	11,970	11,630	11,430	11,120	11,540	11,930	11,950	11,550	11,270	11,050
	19	4,050	4,320	4,140	4,150	4,310	4,210	4,350	3,970	3,780	3,740
	20-24	4,280	4,510	4,460	4,260	4,310	4,230	4,210	3,960	3,620	3,570
	25-29	1,420	1,520	1,370	1,420	1,480	1,390	1,360	1,310	1,290	1,250
	30-34	720	780	760	700	750	750	780	710	750	740
	35 and over	1,120	1,120	1,050	970	1,030	1,020	1,050	1,010	1,100	1,100
	All ages	23,610	23,920	23,240	22,660	23,450	23,550	23,740	22,530	21,830	21,470

I.2.50 Applicants by age: Wales

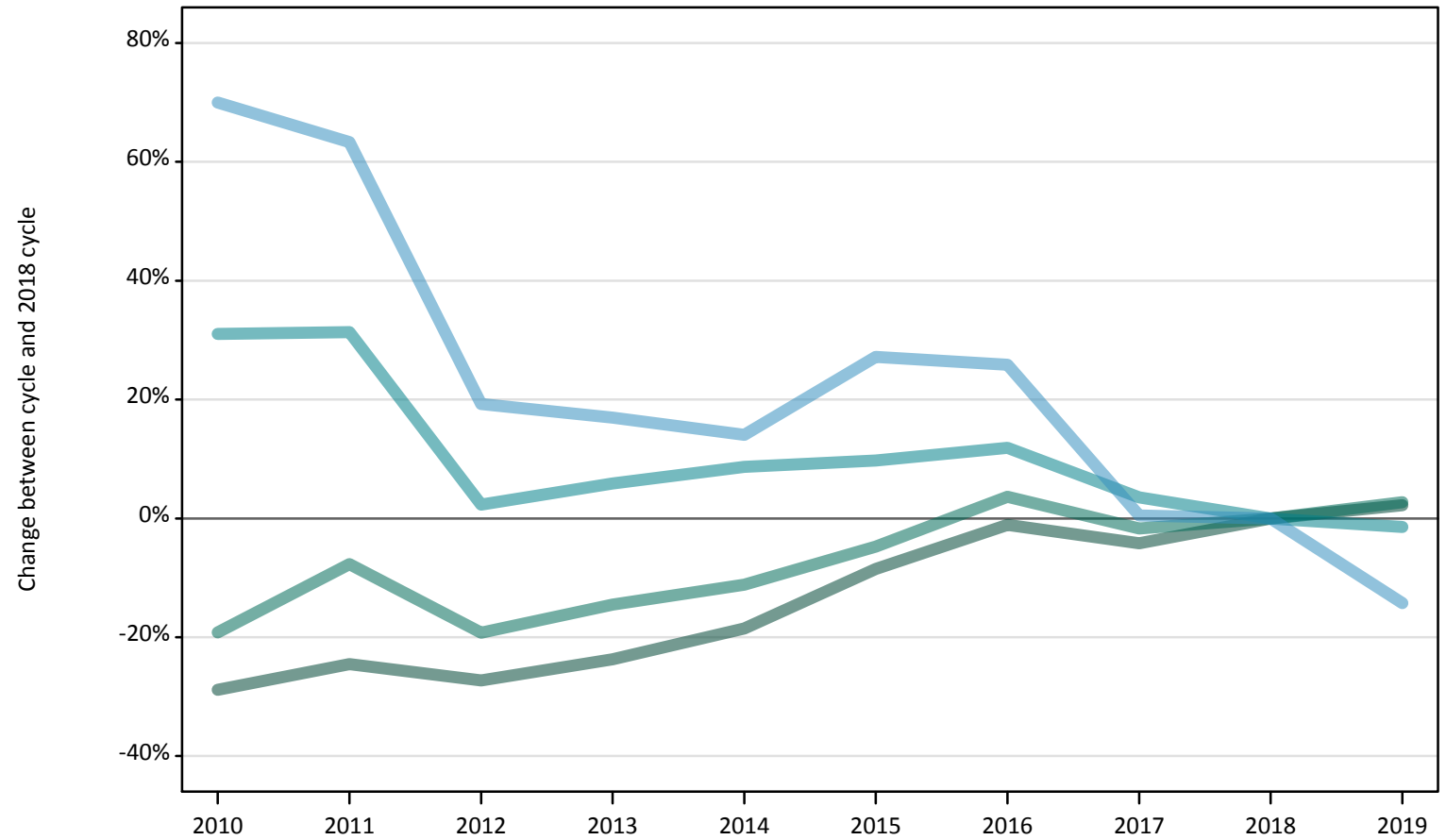
Difference between cycle and 2018 cycle

Domicile and age group		2010	2011	2012	2013	2014	2015	2016	2017	2018	2019
Wales	Under 18	100%	89%	4%	67%	11%	-11%	7%	-15%	0%	0%
	18	6%	3%	1%	-1%	2%	6%	6%	3%	0%	-2%
	19	7%	14%	10%	10%	14%	11%	15%	5%	0%	-1%
	20-24	18%	25%	23%	18%	19%	17%	16%	10%	0%	-1%
	25-29	10%	18%	6%	10%	14%	7%	5%	2%	0%	-3%
	30-34	-4%	4%	2%	-7%	1%	0%	5%	-6%	0%	-2%
	35 and over	1%	1%	-5%	-12%	-7%	-7%	-4%	-9%	0%	-1%
	All ages	8%	10%	6%	4%	7%	8%	9%	3%	0%	-2%

Note: The percentage change is not recorded in the above table for groups with fewer than 10 applicants in that cycle or in the 2018 cycle.

I.2.51 Applicants by age: EU (excluding UK) Difference between cycle and 2018 cycle

- 18
- 19
- 20-24
- 25-29
- 30-34
- 35 and over



Note: The percentage change is not plotted in the above chart for groups with fewer than 500 applicants in any one cycle.

I.2.52 Applicants by age: EU (excluding UK)

Domicile and age group		2010	2011	2012	2013	2014	2015	2016	2017	2018	2019
EU (excluding UK)	Under 18	2,890	3,080	2,950	3,120	3,460	3,920	4,050	4,130	4,350	4,460
	18	12,980	13,760	13,270	13,910	14,860	16,690	18,040	17,470	18,240	18,640
	19	12,200	13,930	12,190	12,900	13,410	14,380	15,640	14,840	15,090	15,510
	20-24	14,000	14,040	10,930	11,310	11,610	11,730	11,950	11,060	10,680	10,530
	25-29	2,070	1,980	1,450	1,420	1,390	1,550	1,530	1,220	1,220	1,040
	30-34	520	480	410	390	360	350	310	300	300	240
	35 and over	370	320	320	300	310	310	320	240	240	230
	All ages	45,010	47,600	41,510	43,360	45,380	48,930	51,850	49,250	50,130	50,650

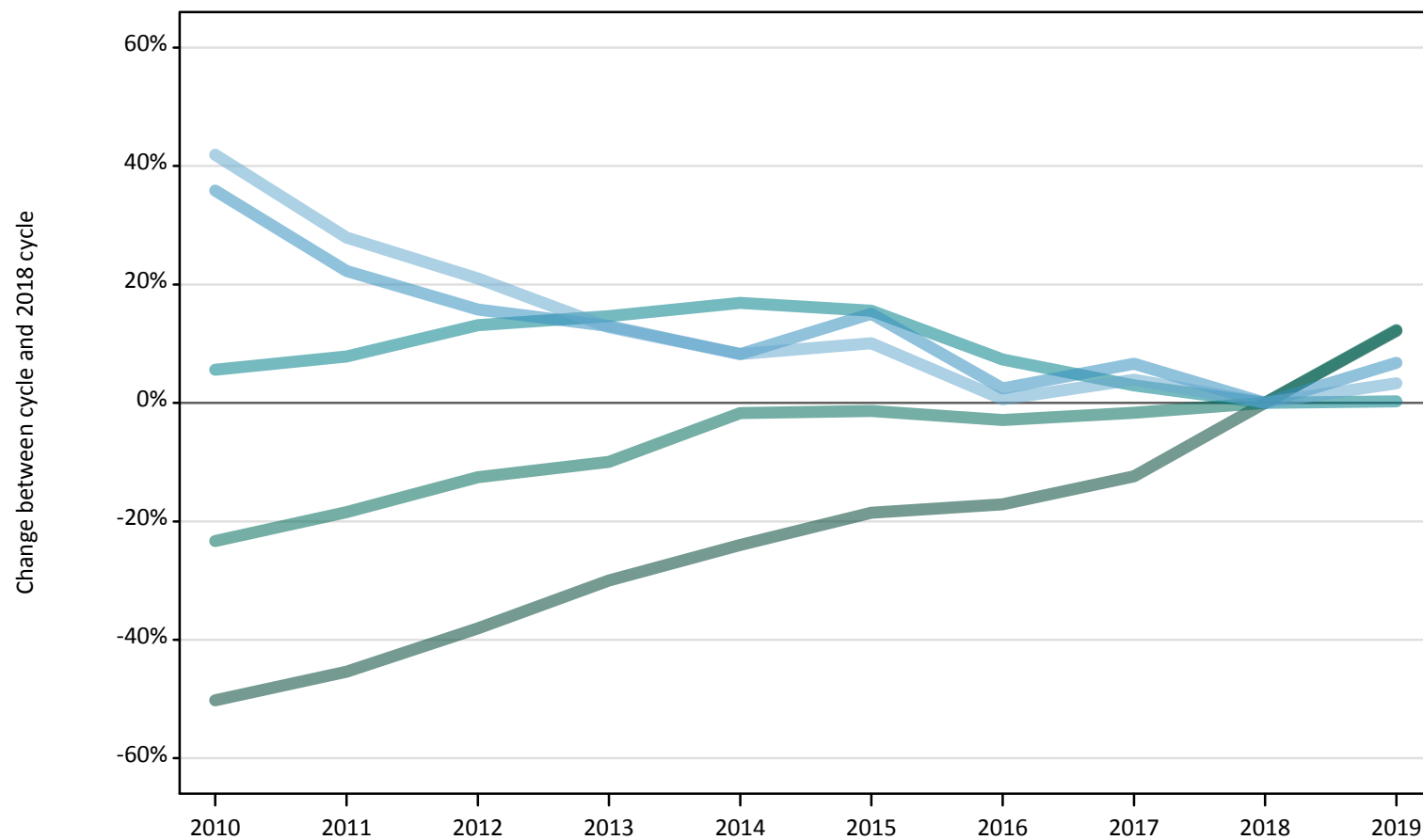
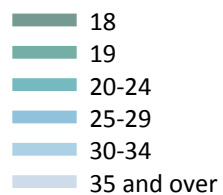
I.2.53 Applicants by age: EU (excluding UK)

Difference between cycle and 2018 cycle

Domicile and age group		2010	2011	2012	2013	2014	2015	2016	2017	2018	2019
EU (excluding UK)	Under 18	-34%	-29%	-32%	-28%	-21%	-10%	-7%	-5%	0%	2%
	18	-29%	-25%	-27%	-24%	-19%	-9%	-1%	-4%	0%	2%
	19	-19%	-8%	-19%	-15%	-11%	-5%	4%	-2%	0%	3%
	20-24	31%	31%	2%	6%	9%	10%	12%	4%	0%	-1%
	25-29	70%	63%	19%	17%	14%	27%	26%	0%	0%	-14%
	30-34	72%	61%	37%	31%	18%	18%	2%	0%	0%	-19%
	35 and over	50%	32%	30%	25%	28%	28%	32%	-2%	0%	-5%
	All ages	-10%	-5%	-17%	-13%	-9%	-2%	3%	-2%	0%	1%

Note: The percentage change is not recorded in the above table for groups with fewer than 10 applicants in that cycle or in the 2018 cycle.

I.2.54 Applicants by age: Not EU
Difference between cycle and 2018 cycle



Note: The percentage change is not plotted in the above chart for groups with fewer than 500 applicants in any one cycle.

I.2.55 Applicants by age: Not EU

Domicile and age group		2010	2011	2012	2013	2014	2015	2016	2017	2018	2019
Not EU	Under 18	3,520	3,760	4,600	5,290	5,970	5,830	6,130	6,670	7,810	7,640
	18	14,970	16,420	18,620	21,050	22,850	24,490	24,920	26,340	30,060	33,720
	19	13,460	14,320	15,350	15,810	17,260	17,310	17,050	17,260	17,560	19,720
	20-24	17,650	18,020	18,900	19,160	19,530	19,310	17,940	17,210	16,710	16,760
	25-29	2,770	2,500	2,360	2,310	2,210	2,350	2,090	2,180	2,040	2,180
	30-34	950	850	810	750	720	730	670	690	670	690
	35 and over	670	560	580	500	520	510	510	490	540	640
	All ages	53,980	56,430	61,220	64,870	69,060	70,530	69,300	70,830	75,380	81,340

I.2.56 Applicants by age: Not EU

Difference between cycle and 2018 cycle

Domicile and age group		2010	2011	2012	2013	2014	2015	2016	2017	2018	2019
Not EU	Under 18	-55%	-52%	-41%	-32%	-23%	-25%	-21%	-15%	0%	-2%
	18	-50%	-45%	-38%	-30%	-24%	-19%	-17%	-12%	0%	12%
	19	-23%	-18%	-13%	-10%	-2%	-1%	-3%	-2%	0%	12%
	20-24	6%	8%	13%	15%	17%	16%	7%	3%	0%	0%
	25-29	36%	22%	16%	13%	8%	15%	2%	7%	0%	7%
	30-34	42%	28%	21%	13%	8%	10%	1%	4%	0%	3%
	35 and over	24%	4%	7%	-7%	-3%	-5%	-6%	-8%	0%	19%
	All ages	-28%	-25%	-19%	-14%	-8%	-6%	-8%	-6%	0%	8%

Note: The percentage change is not recorded in the above table for groups with fewer than 10 applicants in that cycle or in the 2018 cycle.

I.2.57 Technical notes and definitions

Applicants have been able to submit applications for all 2019 courses since early September.

Applicants who submit their applications to UCAS by the January deadline are considered 'on time' applicants for the large majority of courses offered through UCAS. Some art and design courses have a later deadline of 24 March. By definition all main scheme applications have been received by the 30 June deadline.

Counts of the number of applicants reported have been rounded to the nearest 10 applicants, this may result in instances where totals do not equal the sum of the components. Proportional changes have been rounded to the nearest whole percentage point.

Age

This statistical release uses country-specific age definitions which align with the cut off points for school/college cohorts within the different administrations of the UK. For England and Wales ages are defined on the 31 August, for Northern Ireland on the 1 July and for Scotland on the 28 February the following year. Defining ages in this way matches the assignment of children to school cohorts. For applicants outside of the UK the cohort cut off for England and Wales has been used.

Applicant

A person who has made an application in the UCAS system during the cycle reported (including applications for deferred entry). Records of prior acceptance (RPAs) are excluded.

Application

An application to a course at a provider made by an applicant in the UCAS main scheme. Applicants may make up to five main scheme applications.

Country of provider

An applicant may be counted once for each provider country they have applied to in the main scheme. If an applicant has applied to providers in multiple countries then the applicant is counted once within each country of provider applied to.

Domicile

Declared area of permanent residence. The Channel Islands and the Isle of Man have been assigned as 'Not EU'.

Ethnic group

High level grouping of ethnic origin as declared by the applicant: 'Asian', 'Black', 'Mixed', 'White', 'Other', 'Unknown'.

First time applicant

An applicant that did not apply to the UCAS scheme in the previous cycle.

Main scheme

The main UCAS application scheme through which up to five providers/courses can be applied to. This opens in September and closes to new applications on 30 June the following year.

Reapplicant

An applicant that applied to the UCAS scheme in the previous cycle.

Sex

As declared by the applicant.

IMD 2015

The Index of Multiple Deprivation for 2015 identifies small area concentrations of multiple deprivation across all of England, providing a relative measure of deprivation amongst small areas (data zones). When reporting by IMD 2015, the IMD 2015 is used to group areas in each year in the times series.

NIMDM 2017

The Northern Ireland Multiple Deprivation Measure for 2017 identifies small area concentrations of multiple deprivation across all of Northern Ireland, providing a relative measure of deprivation amongst small areas (data zones). When reporting by NIMDM 2017, the NIMDM 2017 is used to group areas in each year in the times series.

SIMD 2012

The Scottish Index of Multiple Deprivation for 2012 identifies small area concentrations of multiple deprivation across all of Scotland, providing a relative measure of deprivation among small areas (data zones). When reporting by SIMD 2012, the SIMD 2012 is used to group areas in each year in the times series.

SIMD 2016

The Scottish Index of Multiple Deprivation for 2016 identifies small area concentrations of multiple deprivation across all of Scotland, providing a relative measure of deprivation among small areas (data zones). When reporting by SIMD 2016, the SIMD 2016 is used to group areas in each year in the times series.

SIMD 2012/2016

Combination of the SIMD measures created in 2012 and 2016. SIMD 2012 is applied to all years before 2017, and SIMD 2016 is applied to years 2017 and onwards.

WIMD 2014

The Welsh Index of Multiple Deprivation identifies small area concentrations of multiple deprivation across all of Wales, providing a relative measure of deprivation among small areas (data zones). In this report, the WIMD 2014 has been used to group areas in each year in the times series.

POLAR4

Developed by HEFCE and classifies small areas across the UK into five groups, according to their level of young participation in HE. Each of these groups represents around 20 per cent of young people, and is ranked from quintile 1 (areas with the lowest young participation rates, considered as the most disadvantaged) to quintile 5 (highest young participation rates, considered most advantaged).

Tariff Group of provider

Providers are grouped as higher, medium or lower tariff based on their average levels of attainment of their accepted applicants (summarised through UCAS Tariff points) in recent cycles. Each group of providers accounted for around a third of all UK 18 year old acceptances in recent cycles.

Subject group

The JACS3 classification used to classify courses into subject groups. With the introduction of HECoS for the 2019 cycle, new courses that were classified using HECoS instead of JACS have been allocated modelled JACS3 values.

Subject group (HECoS)

The CAH classification used to categorise HECoS course subject codes into subject groups. A course may be associated with up to 5 individual subject codes and their respective percentage weight. For this analysis, application totals for subject groups have been calculated by apportioning course applications as weighted by subject group.