

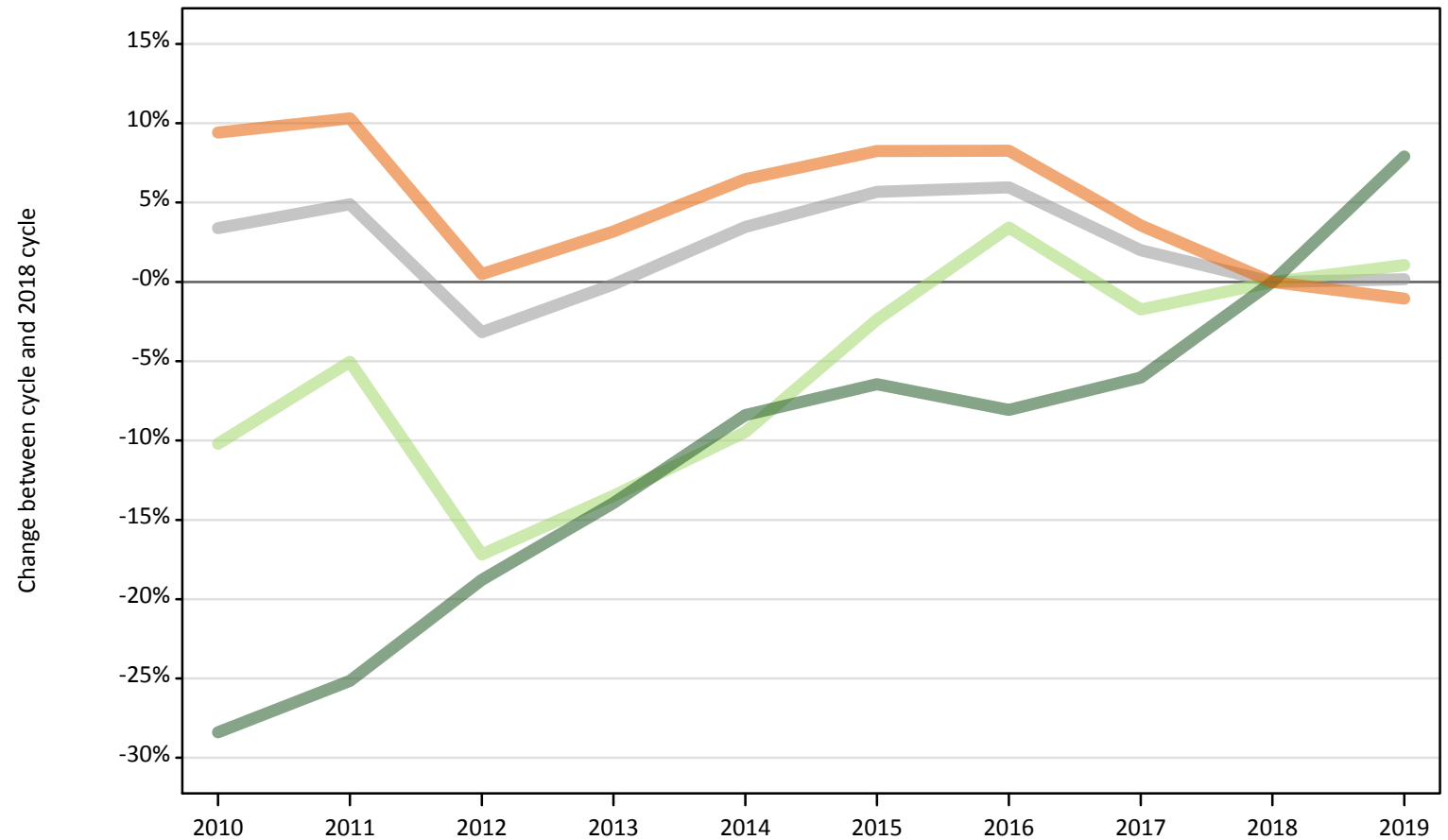
June Deadline Analysis: Domicile

Applicants by domicile at the 30 June deadline

I.1.1 Applicants by domicile group

Difference between cycle and 2018 cycle

- UK
- EU (excluding UK)
- Not EU
- All domiciles



Note: The percentage change is not plotted in the above chart for groups with fewer than 500 applicants in any one cycle.

I.1.2 Applicants by domicile group

Domicile group of applicant	2010	2011	2012	2013	2014	2015	2016	2017	2018	2019
UK	559,570	564,120	513,970	527,670	544,580	553,590	553,740	529,620	511,460	506,040
EU (excluding UK)	45,010	47,600	41,510	43,360	45,380	48,930	51,850	49,250	50,130	50,650
Not EU	53,980	56,430	61,220	64,870	69,060	70,530	69,300	70,830	75,380	81,340
All domiciles	658,560	668,150	616,700	635,910	659,030	673,040	674,890	649,700	636,960	638,030

I.1.3 Applicants by domicile group

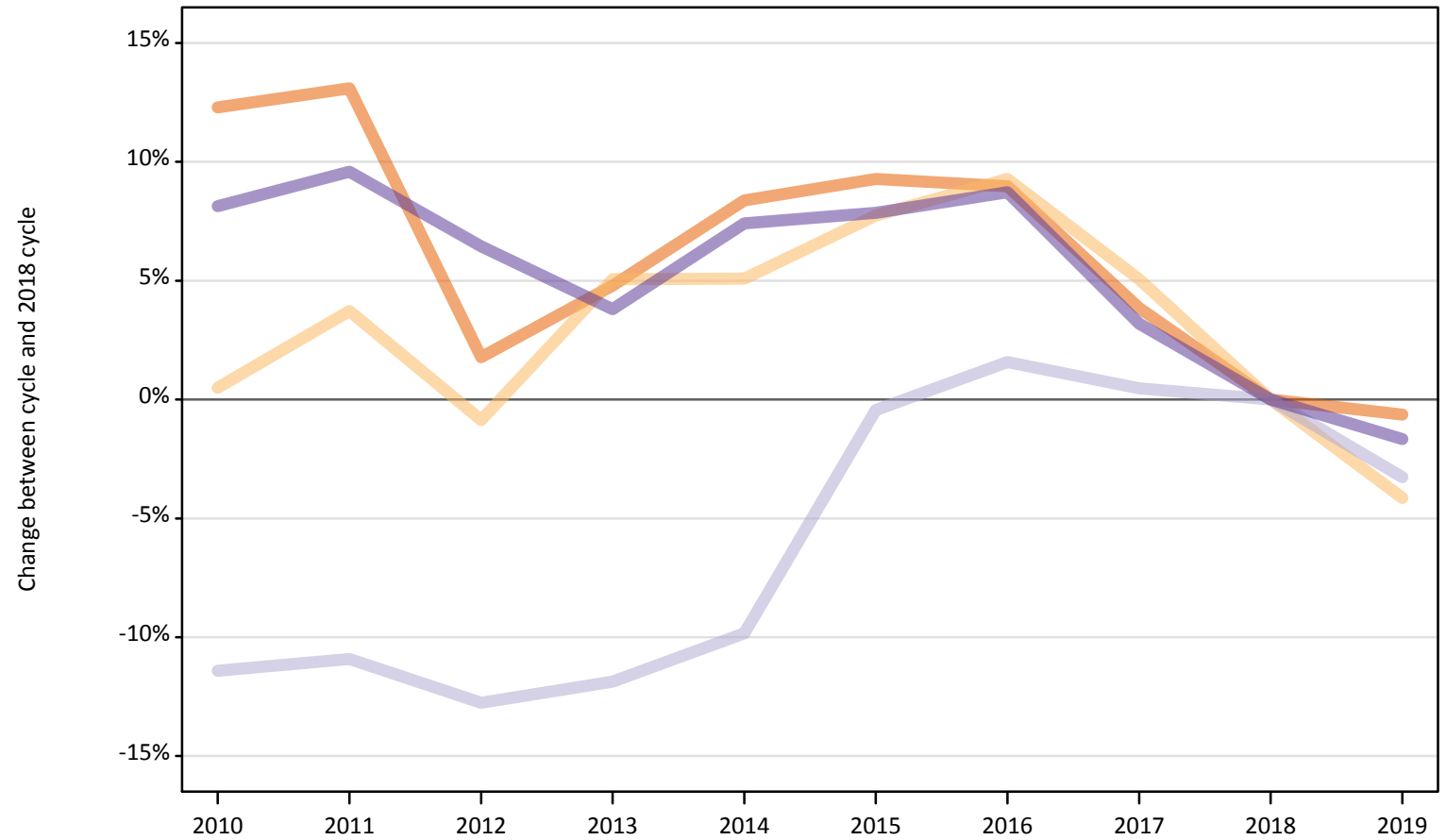
Difference between cycle and 2018 cycle

Domicile group of applicant	2010	2011	2012	2013	2014	2015	2016	2017	2018	2019
UK	9%	10%	0%	3%	6%	8%	8%	4%	0%	-1%
EU (excluding UK)	-10%	-5%	-17%	-13%	-9%	-2%	3%	-2%	0%	1%
Not EU	-28%	-25%	-19%	-14%	-8%	-6%	-8%	-6%	0%	8%
All domiciles	3%	5%	-3%	-0%	3%	6%	6%	2%	0%	0%

Note: The percentage change is not recorded in the above table for groups with fewer than 10 applicants in that cycle or in the 2018 cycle.

I.1.4 Applicants by UK country of domicile Difference between cycle and 2018 cycle

- England
- Northern Ireland
- Scotland
- Wales



Note: The percentage change is not plotted in the above chart for groups with fewer than 500 applicants in any one cycle.

I.1.5 Applicants by UK country of domicile

Domicile group of applicant	2010	2011	2012	2013	2014	2015	2016	2017	2018	2019
England	473,400	476,770	429,100	441,790	456,920	460,740	459,430	437,860	421,610	418,940
Northern Ireland	19,410	20,030	19,150	20,290	20,300	20,810	21,110	20,290	19,310	18,520
Scotland	43,150	43,390	42,490	42,930	43,910	48,490	49,470	48,940	48,710	47,110
Wales	23,610	23,920	23,240	22,660	23,450	23,550	23,740	22,530	21,830	21,470
UK	559,570	564,120	513,970	527,670	544,580	553,590	553,740	529,620	511,460	506,040

I.1.6 Applicants by UK country of domicile

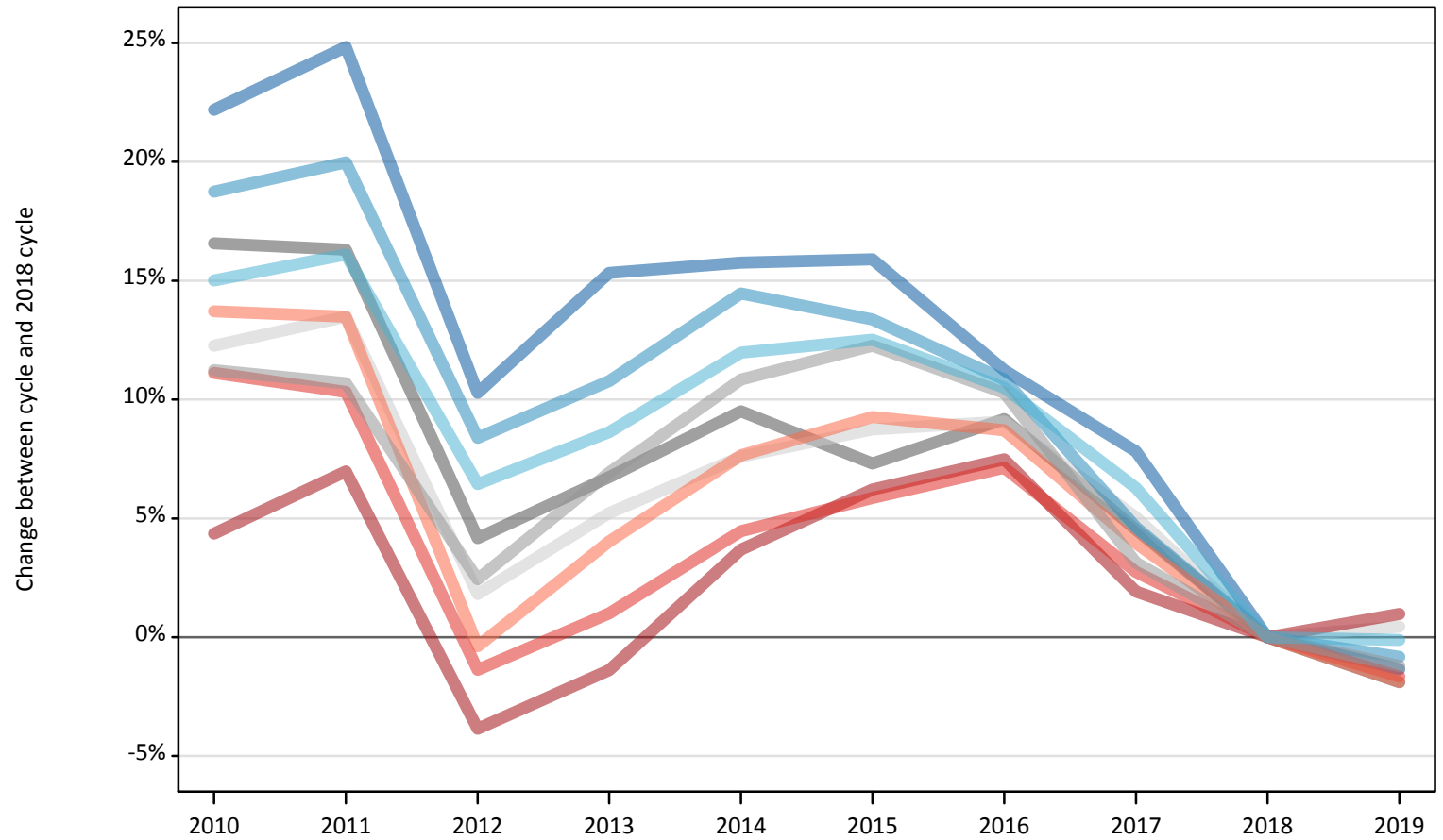
Difference between cycle and 2018 cycle

Domicile group of applicant	2010	2011	2012	2013	2014	2015	2016	2017	2018	2019
England	12%	13%	2%	5%	8%	9%	9%	4%	0%	-1%
Northern Ireland	0%	4%	-1%	5%	5%	8%	9%	5%	0%	-4%
Scotland	-11%	-11%	-13%	-12%	-10%	-0%	2%	0%	0%	-3%
Wales	8%	10%	6%	4%	7%	8%	9%	3%	0%	-2%
UK	9%	10%	0%	3%	6%	8%	8%	4%	0%	-1%

Note: The percentage change is not recorded in the above table for groups with fewer than 10 applicants in that cycle or in the 2018 cycle.

I.1.7 Applicants by English region of domicile Difference between cycle and 2018 cycle

- North East
- Yorkshire and the Humber
- North West
- East Midlands
- West Midlands
- East of England
- London
- South East
- South West



Note: The percentage change is not plotted in the above chart for groups with fewer than 500 applicants in any one cycle.

I.1.8 Applicants by English region of domicile

English region	2010	2011	2012	2013	2014	2015	2016	2017	2018	2019
North East	20,940	21,390	18,900	19,760	19,840	19,860	19,060	18,470	17,140	16,910
Yorkshire and the Humber	43,110	43,520	39,900	40,720	41,970	42,180	41,420	39,840	37,480	37,440
North West	64,760	65,420	59,110	60,410	62,420	61,820	60,440	57,050	54,530	54,080
East Midlands	37,050	36,970	33,110	33,930	34,810	34,110	34,700	33,220	31,790	31,180
West Midlands	48,730	48,490	44,880	46,840	48,560	49,180	48,310	45,180	43,810	43,280
East of England	48,090	48,620	43,620	45,070	46,100	46,580	46,730	45,000	42,840	43,030
London	90,690	92,970	83,560	85,700	90,110	92,310	93,400	88,570	86,900	87,760
South East	76,170	75,620	67,600	69,230	71,600	72,560	73,430	70,430	68,540	67,420
South West	43,870	43,780	38,430	40,130	41,530	42,150	41,940	40,100	38,580	37,850

I.1.9 Applicants by English region of domicile

Difference between cycle and 2018 cycle

English region	2010	2011	2012	2013	2014	2015	2016	2017	2018	2019
North East	22%	25%	10%	15%	16%	16%	11%	8%	0%	-1%
Yorkshire and the Humber	15%	16%	6%	9%	12%	13%	10%	6%	0%	-0%
North West	19%	20%	8%	11%	14%	13%	11%	5%	0%	-1%
East Midlands	17%	16%	4%	7%	10%	7%	9%	5%	0%	-2%
West Midlands	11%	11%	2%	7%	11%	12%	10%	3%	0%	-1%
East of England	12%	13%	2%	5%	8%	9%	9%	5%	0%	0%
London	4%	7%	-4%	-1%	4%	6%	7%	2%	0%	1%
South East	11%	10%	-1%	1%	4%	6%	7%	3%	0%	-2%
South West	14%	13%	-0%	4%	8%	9%	9%	4%	0%	-2%

Note: The percentage change is not recorded in the above table for groups with fewer than 10 applicants in that cycle or in the 2018 cycle.

I.1.10 Applicants by declared country of domicile
Selected countries

Declared country of domicile	2010	2011	2012	2013	2014	2015	2016	2017	2018	2019
Albania	80	80	80	70	80	90	110	80	90	130
Angola	90	80	100	90	110	210	170	80	70	70
Australia	360	400	470	540	570	590	570	590	600	620
Austria	490	560	550	570	590	620	640	580	610	610
Azerbaijan	270	220	260	290	380	300	170	140	130	170
Bahrain	310	340	360	380	380	350	360	430	400	360
Bangladesh	480	380	390	290	320	340	250	290	270	310
Barbados	100	80	90	80	90	110	70	100	90	90
Belgium	950	980	860	940	1,010	1,080	1,110	1,080	1,080	1,020
Bermuda	320	250	210	190	200	210	210	180	240	200
Botswana	230	150	160	110	120	170	160	160	140	150
Brazil	180	150	200	230	260	290	290	260	340	350
Brunei	940	800	750	730	840	540	440	370	330	310
Bulgaria	2,100	2,380	2,290	2,540	2,290	2,280	2,490	2,240	2,230	2,070
Burma (Myanmar)	70	70	90	60	80	90	130	90	120	140
Cameroon	110	80	80	80	80	80	50	70	90	110
Canada	1,910	2,120	2,360	2,330	2,270	2,390	2,270	2,230	2,330	2,400
Canary Islands	50	60	40	60	70	70	90	70	80	120
Cayman Islands	70	100	110	110	120	100	120	120	160	180
China	8,500	9,660	10,510	10,690	10,730	11,540	12,450	13,390	15,240	19,760
Croatia	40	40	40	70	150	270	360	330	400	350
Cyprus (European Union)	3,630	4,060	3,280	3,300	3,280	3,220	3,060	3,230	2,690	2,600
Czech Republic	410	450	450	470	600	850	1,100	1,090	1,050	1,140
Denmark	490	460	420	460	450	480	500	540	530	520
Ecuador	20	20	30	50	100	80	160	140	60	60
Egypt	190	260	340	480	610	710	850	810	730	760
Estonia	520	630	550	610	520	500	460	400	390	400
Finland	780	900	710	820	920	1,010	1,000	860	910	790
France	4,330	4,220	3,780	3,850	4,370	4,910	5,220	5,110	5,120	5,330
Germany	4,150	4,120	3,360	3,150	3,150	3,300	3,570	3,230	3,390	3,150
Ghana	300	260	240	260	270	290	280	340	390	450
Gibraltar	280	300	280	310	300	290	290	290	290	350
Greece	2,460	2,760	2,370	2,420	2,360	2,320	2,370	2,340	2,290	2,270

Declared country of domicile	2010	2011	2012	2013	2014	2015	2016	2017	2018	2019
Guernsey	350	320	300	300	300	320	330	260	320	300
Hong Kong	3,700	4,350	6,000	6,170	6,570	6,210	6,100	5,960	6,100	5,740
Hungary	420	400	570	770	770	830	930	910	980	1,030
Iceland	50	50	60	60	70	70	90	60	80	100
India	2,910	3,090	3,380	3,790	3,990	4,130	4,280	4,790	5,890	6,210
Indonesia	200	280	350	480	510	570	610	640	770	820
Iran	600	550	460	270	260	230	250	330	370	310
Ireland	8,070	7,380	5,990	5,940	5,710	5,680	5,180	4,360	4,100	4,060
Isle of Man	560	550	520	490	500	460	490	500	460	440
Israel	120	110	110	140	110	130	140	110	160	120
Italy	2,060	2,430	2,600	3,150	3,990	4,660	4,920	4,420	4,300	4,430
Japan	400	430	490	490	540	490	450	450	500	530
Jersey	580	600	570	530	500	520	560	570	550	680
Jordan	330	370	350	410	410	420	410	480	520	470
Kazakhstan	600	450	360	360	370	360	310	250	280	300
Kenya	680	640	690	650	690	750	710	680	750	740
Korea (South)	1,130	1,300	1,320	1,390	1,380	1,520	1,590	1,560	1,610	1,650
Kuwait	360	420	460	450	480	540	560	700	690	760
Latvia	1,140	1,020	730	590	550	520	580	580	560	600
Lebanon	110	140	180	200	250	260	340	330	390	380
Libyan AR	140	90	80	90	130	110	100	30	30	60
Lithuania	2,550	3,280	2,390	2,110	1,910	1,820	1,890	2,030	2,080	1,920
Luxembourg	350	380	370	420	460	440	430	440	450	420
Macao	90	110	150	140	180	260	220	280	240	230
Malawi	110	90	80	80	60	50	70	90	90	110
Malaysia	3,100	3,520	3,810	4,820	6,180	6,530	5,530	4,670	4,260	4,250
Malta	150	140	110	120	100	100	120	100	130	120
Mauritius	510	470	460	390	500	400	410	370	360	340
Mexico	150	140	140	160	150	170	210	170	230	250
Morocco	150	210	210	260	320	360	330	350	420	410
Nepal	160	150	160	120	100	80	80	80	90	90
Netherlands	850	830	740	800	820	890	930	940	910	980
New Zealand	120	140	140	150	170	180	200	190	200	200
Nigeria	2,260	2,220	2,100	2,280	2,150	1,990	1,670	1,560	1,530	1,670
Norway	1,670	1,880	2,030	2,150	2,180	2,080	1,520	1,570	1,570	1,490
Oman	200	200	220	250	330	340	320	360	340	330

Declared country of domicile	2010	2011	2012	2013	2014	2015	2016	2017	2018	2019
Pakistan	2,180	1,950	1,830	1,760	1,750	1,810	1,840	2,000	2,220	2,290
Peru	40	40	40	60	60	80	90	100	100	130
Philippines	100	100	110	120	130	170	140	150	170	200
Poland	2,080	2,090	1,840	2,180	2,550	2,960	3,750	3,710	4,300	4,270
Portugal	640	740	690	860	930	1,200	1,430	1,740	2,260	2,410
Qatar	310	380	410	510	460	470	550	490	560	550
Romania	2,120	2,950	2,740	2,550	2,730	3,430	3,580	3,050	2,920	3,180
Russia	710	740	840	970	1,190	1,300	1,040	920	870	750
Saudi Arabia	1,240	990	960	1,020	980	1,060	1,010	940	1,070	1,240
Serbia	70	80	100	130	110	100	130	120	110	100
Singapore	2,810	3,270	3,800	4,090	4,290	4,130	3,630	3,460	3,450	3,440
Slovakia	440	480	500	500	600	590	820	680	790	990
Slovenia	100	110	110	130	160	160	160	160	160	140
South Africa	270	260	270	310	330	420	470	720	560	640
Spain	1,500	1,700	1,600	2,080	2,470	2,910	3,410	3,460	3,820	4,160
Sri Lanka	580	490	380	330	300	250	230	300	300	310
Sweden	1,790	1,670	1,510	1,580	1,560	1,490	1,400	1,240	1,250	1,170
Switzerland	890	920	980	1,120	1,130	1,280	1,300	1,270	1,400	1,330
Taiwan	250	300	310	310	330	370	340	430	460	510
Tanzania	210	180	160	190	200	170	160	140	160	160
Thailand	520	590	660	700	820	830	820	820	910	1,000
Trinidad and Tobago	150	170	160	170	170	200	200	180	210	190
Turkey	450	450	490	560	600	610	790	1,000	1,280	1,250
Uganda	200	140	180	200	140	170	160	180	200	190
Ukraine	200	200	240	300	320	280	240	230	220	220
United Arab Emirates	790	830	920	1,090	1,300	1,420	1,520	1,980	2,210	2,330
United States of America	2,880	2,900	3,120	3,450	3,770	3,800	4,040	4,400	4,700	4,920
Uzbekistan	40	40	40	40	40	60	50	60	50	100
Vietnam	600	690	690	660	580	470	390	410	370	370
Zambia	150	120	150	170	150	160	160	150	150	170
Zimbabwe	410	350	370	360	460	420	450	470	500	530

I.1.11 Applicants by declared country of domicile
 Selected countries, difference between cycle and 2018 cycle

Declared country of domicile	2010	2011	2012	2013	2014	2015	2016	2017	2018	2019
Albania	-12%	-17%	-13%	-20%	-11%	-4%	23%	-17%	0%	46%
Angola	26%	11%	46%	33%	56%	197%	143%	13%	0%	6%
Australia	-39%	-33%	-21%	-11%	-6%	-2%	-4%	-2%	0%	4%
Austria	-19%	-8%	-9%	-6%	-3%	3%	6%	-4%	0%	0%
Azerbaijan	112%	70%	103%	122%	195%	132%	33%	8%	0%	28%
Bahrain	-21%	-15%	-8%	-4%	-5%	-13%	-8%	10%	0%	-9%
Bangladesh	75%	40%	44%	8%	18%	23%	-8%	5%	0%	14%
Barbados	9%	-11%	2%	-14%	-7%	16%	-23%	4%	0%	-7%
Belgium	-13%	-10%	-21%	-13%	-7%	-0%	2%	-1%	0%	-6%
Bermuda	30%	2%	-15%	-20%	-16%	-16%	-14%	-24%	0%	-19%
Botswana	58%	6%	10%	-26%	-16%	17%	15%	13%	0%	3%
Brazil	-46%	-55%	-41%	-34%	-24%	-16%	-14%	-25%	0%	3%
Brunei	182%	142%	127%	120%	155%	63%	31%	12%	0%	-7%
Bulgaria	-6%	7%	2%	14%	2%	2%	11%	0%	0%	-7%
Burma (Myanmar)	-45%	-44%	-30%	-48%	-34%	-26%	3%	-28%	0%	19%
Cameroon	26%	-13%	-16%	-17%	-14%	-10%	-43%	-19%	0%	20%
Canada	-18%	-9%	1%	-0%	-2%	3%	-2%	-4%	0%	3%
Canary Islands	-41%	-30%	-53%	-30%	-11%	-8%	10%	-8%	0%	53%
Cayman Islands	-54%	-35%	-33%	-33%	-24%	-38%	-27%	-22%	0%	13%
China	-44%	-37%	-31%	-30%	-30%	-24%	-18%	-12%	0%	30%
Croatia	-90%	-90%	-91%	-82%	-61%	-32%	-9%	-18%	0%	-11%
Cyprus (European Union)	35%	51%	22%	23%	22%	20%	14%	20%	0%	-3%
Czech Republic	-61%	-57%	-57%	-56%	-43%	-19%	4%	3%	0%	8%
Denmark	-8%	-13%	-21%	-14%	-16%	-10%	-6%	2%	0%	-3%
Ecuador	-60%	-60%	-52%	-16%	66%	29%	171%	140%	0%	3%
Egypt	-74%	-64%	-53%	-34%	-16%	-3%	16%	11%	0%	4%
Estonia	33%	63%	41%	57%	33%	30%	20%	4%	0%	3%
Finland	-14%	-1%	-21%	-10%	1%	11%	10%	-5%	0%	-13%
France	-15%	-18%	-26%	-25%	-15%	-4%	2%	-0%	0%	4%
Germany	23%	22%	-1%	-7%	-7%	-3%	5%	-5%	0%	-7%
Ghana	-23%	-34%	-39%	-34%	-31%	-26%	-27%	-12%	0%	17%
Gibraltar	-5%	3%	-5%	4%	1%	-1%	0%	-2%	0%	18%
Greece	8%	21%	4%	6%	3%	1%	4%	2%	0%	-1%

Declared country of domicile	2010	2011	2012	2013	2014	2015	2016	2017	2018	2019
Guernsey	10%	0%	-5%	-5%	-5%	1%	5%	-17%	0%	-5%
Hong Kong	-39%	-29%	-2%	1%	8%	2%	0%	-2%	0%	-6%
Hungary	-57%	-59%	-42%	-22%	-22%	-15%	-5%	-8%	0%	5%
Iceland	-35%	-32%	-21%	-22%	-8%	-16%	12%	-26%	0%	30%
India	-51%	-48%	-43%	-36%	-32%	-30%	-27%	-19%	0%	5%
Indonesia	-74%	-64%	-54%	-37%	-34%	-26%	-21%	-16%	0%	7%
Iran	63%	49%	25%	-28%	-30%	-38%	-32%	-11%	0%	-15%
Ireland	97%	80%	46%	45%	39%	39%	26%	6%	0%	-1%
Isle of Man	22%	19%	11%	5%	8%	-1%	6%	8%	0%	-5%
Israel	-20%	-30%	-26%	-9%	-30%	-18%	-10%	-30%	0%	-21%
Italy	-52%	-43%	-39%	-27%	-7%	8%	14%	3%	0%	3%
Japan	-20%	-15%	-2%	-1%	8%	-2%	-10%	-11%	0%	5%
Jersey	6%	10%	3%	-3%	-9%	-5%	2%	3%	0%	24%
Jordan	-37%	-29%	-32%	-21%	-21%	-20%	-22%	-8%	0%	-10%
Kazakhstan	112%	60%	28%	28%	30%	26%	9%	-11%	0%	7%
Kenya	-9%	-15%	-8%	-13%	-7%	-0%	-6%	-10%	0%	-2%
Korea (South)	-30%	-19%	-18%	-14%	-15%	-6%	-2%	-3%	0%	2%
Kuwait	-48%	-38%	-33%	-35%	-30%	-21%	-19%	3%	0%	10%
Latvia	101%	80%	30%	5%	-2%	-7%	2%	2%	0%	6%
Lebanon	-71%	-63%	-54%	-48%	-35%	-33%	-11%	-15%	0%	-3%
Libyan AR	440%	268%	216%	252%	404%	324%	292%	24%	0%	152%
Lithuania	23%	58%	15%	1%	-8%	-13%	-9%	-3%	0%	-8%
Luxembourg	-22%	-15%	-19%	-8%	1%	-4%	-4%	-4%	0%	-8%
Macao	-63%	-54%	-36%	-41%	-24%	7%	-8%	15%	0%	-3%
Malawi	18%	-2%	-10%	-12%	-35%	-43%	-22%	-4%	0%	26%
Malaysia	-27%	-17%	-11%	13%	45%	53%	30%	10%	0%	-0%
Malta	17%	11%	-17%	-8%	-21%	-17%	-3%	-17%	0%	-6%
Mauritius	44%	31%	29%	11%	40%	13%	15%	4%	0%	-5%
Mexico	-37%	-41%	-41%	-33%	-34%	-27%	-12%	-26%	0%	6%
Morocco	-64%	-50%	-49%	-38%	-23%	-14%	-21%	-16%	0%	-0%
Nepal	91%	75%	91%	40%	14%	-9%	-12%	-12%	0%	9%
Netherlands	-7%	-9%	-19%	-12%	-11%	-3%	1%	3%	0%	8%
New Zealand	-42%	-29%	-31%	-25%	-17%	-12%	-1%	-9%	0%	-2%
Nigeria	48%	45%	37%	49%	41%	30%	9%	2%	0%	9%
Norway	6%	20%	29%	37%	39%	32%	-4%	-0%	0%	-5%
Oman	-43%	-43%	-35%	-27%	-3%	-0%	-8%	4%	0%	-3%

Declared country of domicile	2010	2011	2012	2013	2014	2015	2016	2017	2018	2019
Pakistan	-2%	-12%	-17%	-20%	-21%	-18%	-17%	-10%	0%	3%
Peru	-65%	-65%	-64%	-45%	-43%	-27%	-14%	-5%	0%	30%
Philippines	-39%	-42%	-37%	-30%	-24%	-2%	-18%	-14%	0%	21%
Poland	-52%	-52%	-57%	-49%	-41%	-31%	-13%	-14%	0%	-1%
Portugal	-72%	-67%	-69%	-62%	-59%	-47%	-37%	-23%	0%	7%
Qatar	-45%	-32%	-26%	-9%	-17%	-15%	-2%	-11%	0%	-1%
Romania	-27%	1%	-6%	-13%	-6%	18%	23%	5%	0%	9%
Russia	-18%	-15%	-3%	11%	38%	49%	20%	6%	0%	-13%
Saudi Arabia	15%	-8%	-11%	-5%	-9%	-2%	-6%	-12%	0%	15%
Serbia	-40%	-33%	-14%	17%	1%	-15%	12%	6%	0%	-13%
Singapore	-18%	-5%	10%	19%	24%	20%	5%	0%	0%	-0%
Slovakia	-44%	-39%	-37%	-37%	-24%	-25%	4%	-13%	0%	25%
Slovenia	-37%	-28%	-29%	-17%	-1%	1%	-1%	0%	0%	-12%
South Africa	-52%	-54%	-51%	-44%	-40%	-25%	-15%	29%	0%	16%
Spain	-61%	-55%	-58%	-46%	-35%	-24%	-11%	-10%	0%	9%
Sri Lanka	90%	61%	25%	8%	1%	-18%	-23%	-1%	0%	3%
Sweden	43%	34%	21%	27%	25%	19%	12%	-1%	0%	-6%
Switzerland	-36%	-34%	-30%	-20%	-19%	-8%	-7%	-9%	0%	-5%
Taiwan	-46%	-34%	-31%	-33%	-27%	-19%	-25%	-6%	0%	11%
Tanzania	33%	13%	5%	23%	29%	7%	1%	-8%	0%	-1%
Thailand	-43%	-35%	-28%	-23%	-9%	-8%	-10%	-10%	0%	10%
Trinidad and Tobago	-26%	-17%	-24%	-18%	-19%	-1%	-3%	-13%	0%	-6%
Turkey	-65%	-65%	-62%	-56%	-53%	-53%	-39%	-22%	0%	-3%
Uganda	1%	-29%	-8%	-1%	-32%	-17%	-19%	-11%	0%	-6%
Ukraine	-11%	-11%	7%	35%	46%	25%	10%	5%	0%	-2%
United Arab Emirates	-64%	-62%	-59%	-51%	-41%	-36%	-31%	-10%	0%	5%
United States of America	-39%	-38%	-34%	-27%	-20%	-19%	-14%	-7%	0%	5%
Uzbekistan	-28%	-28%	-24%	-26%	-14%	20%	-8%	22%	0%	102%
Vietnam	63%	87%	88%	79%	57%	28%	7%	10%	0%	0%
Zambia	1%	-15%	4%	14%	1%	8%	8%	5%	0%	17%
Zimbabwe	-16%	-29%	-26%	-27%	-7%	-15%	-9%	-5%	0%	8%

Note: The percentage change is not recorded in the above table for groups with fewer than 10 applicants in that cycle or in the 2018 cycle.

I.1.12 Technical notes and definitions

Applicants have been able to submit applications for all 2019 courses since early September.

Applicants who submit their applications to UCAS by the January deadline are considered 'on time' applicants for the large majority of courses offered through UCAS. Some art and design courses have a later deadline of 24 March. By definition all main scheme applications have been received by the 30 June deadline.

Counts of the number of applicants reported have been rounded to the nearest 10 applicants, this may result in instances where totals do not equal the sum of the components. Proportional changes have been rounded to the nearest whole percentage point.

In 2014, the Croatia classification changed from Not EU to EU (excluding UK). In order to present an accurate time series, Croatia has been consistently classified as EU (excluding UK). This will result in differences with data published prior to 2019.

Age

This statistical release uses country-specific age definitions which align with the cut off points for school/college cohorts within the different administrations of the UK. For England and Wales ages are defined on the 31 August, for Northern Ireland on the 1 July and for Scotland on the 28 February the following year. Defining ages in this way matches the assignment of children to school cohorts. For applicants outside of the UK the cohort cut off for England and Wales has been used.

Applicant

A person who has made an application in the UCAS system during the cycle reported (including applications for deferred entry). Records of prior acceptance (RPAs) are excluded.

Application

An application to a course at a provider made by an applicant in the UCAS main scheme. Applicants may make up to five main scheme applications.

Country of provider

An applicant may be counted once for each provider country they have applied to in the main scheme. If an applicant has applied to providers in multiple countries then the applicant is counted once within each country of provider applied to.

Domicile

Declared area of permanent residence. The Channel Islands and the Isle of Man have been assigned as 'Not EU'.

Ethnic group

High level grouping of ethnic origin as declared by the applicant: 'Asian', 'Black', 'Mixed', 'White', 'Other', 'Unknown'.

First time applicant

An applicant that did not apply to the UCAS scheme in the previous cycle.

Main scheme

The main UCAS application scheme through which up to five providers/courses can be applied to. This opens in September and closes to new applications on 30 June the following year.

Reapplicant

An applicant that applied to the UCAS scheme in the previous cycle.

Sex

As declared by the applicant.

IMD 2015

The Index of Multiple Deprivation for 2015 identifies small area concentrations of multiple deprivation across all of England, providing a relative measure of deprivation amongst small areas (data zones). When reporting by IMD 2015, the IMD 2015 is used to group areas in each year in the times series.

NIMDM 2017

The Northern Ireland Multiple Deprivation Measure for 2017 identifies small area concentrations of multiple deprivation across all of Northern Ireland, providing a relative measure of deprivation amongst small areas (data zones). When reporting by NIMDM 2017, the NIMDM 2017 is used to group areas in each year in the times series.

SIMD 2012

The Scottish Index of Multiple Deprivation for 2012 identifies small area concentrations of multiple deprivation across all of Scotland, providing a relative measure of deprivation among small areas (data zones). When reporting by SIMD 2012, the SIMD 2012 is used to group areas in each year in the times series.

SIMD 2016

The Scottish Index of Multiple Deprivation for 2016 identifies small area concentrations of multiple deprivation across all of Scotland, providing a relative measure of deprivation among small areas (data zones). When reporting by SIMD 2016, the SIMD 2016 is used to group areas in each year in the times series.

SIMD 2012/2016

Combination of the SIMD measures created in 2012 and 2016. SIMD 2012 is applied to all years before 2017, and SIMD 2016 is applied to years 2017 and onwards.

WIMD 2014

The Welsh Index of Multiple Deprivation identifies small area concentrations of multiple deprivation across all of Wales, providing a relative measure of deprivation among small areas (data zones). In this report, the WIMD 2014 has been used to group areas in each year in the times series.

POLAR4

Developed by HEFCE and classifies small areas across the UK into five groups, according to their level of young participation in HE. Each of these groups represents around 20 per cent of young people, and is ranked from quintile 1 (areas with the lowest young participation rates, considered as the most disadvantaged) to quintile 5 (highest young participation rates, considered most advantaged).

Tariff Group of provider

Providers are grouped as higher, medium or lower tariff based on their average levels of attainment of their accepted applicants (summarised through UCAS Tariff points) in recent cycles. Each group of providers accounted for around a third of all UK 18 year old acceptances in recent cycles.

Subject group

The JACS3 classification used to classify courses into subject groups. With the introduction of HECoS for the 2019 cycle, new courses that were classified using HECoS instead of JACS have been allocated modelled JACS3 values.

Subject group (HECoS)

The CAH classification used to categorise HECoS course subject codes into subject groups. A course may be associated with up to 5 individual subject codes and their respective percentage weight. For this analysis, application totals for subject groups have been calculated by apportioning course applications as weighted by subject group.