

## H49 University of the Highlands and Islands (UHI)

**Cycle years:** 2013 - 2018

**Cycle Reference Point:** End of Cycle

**Applicant coverage:** UK domiciled

**Reporting groups:** Sex, POLAR4, SIMD 2016, ethnic group

**Applicant statistics:** June deadline applicants, placed June deadline applicants, all placed applicants, June deadline applicants per 10,000 population, placed June deadline applicants per 10,000 population, all placed applicants per 10,000 population

**Application statistics:** June deadline applications, offers, offer rate, average offer rate, percentage point difference between offer rate and average offer rate, contribution of group to the average offer rate

**Non-disclosure controls:** To avoid the disclosure of information about any individual the following measures are taken

- Applicants, placed applicants, applications and offers are rounded to the nearest 5.
- Applicants/placed applicants per 10,000 population figures are reported as 0 if the applicant/placed applicant figures are rounded to 0.
- All statistics related to the offer rate are not reported when the number of applications for a group is less than 10. The percentage point difference between the offer rate and the average offer rate is not reported when the number of applications for a group is less than 50.
- Offer rates are reported as 0% if there are fewer than 5 offers, and 100% if the number of offers is within 5 of the number of applications. When the offer rate is reported as 0% or 100%, it is reported in italics.

### Contents:

18 year old applicants:	P.1
18 year old applications:	P.2
18 year old applicants by sex:	P.3
18 year old applications by sex:	P.4
18 year old applicants by POLAR4 quintile:	P.7
18 year old applications by POLAR4 quintile:	P.8
18 year old, Scotland domiciled applicants by SIMD 2016 quintile:	P.11
18 year old, Scotland domiciled applications by SIMD 2016 quintile:	P.12
18 year old applicants by ethnic group:	P.15
18 year old applications by ethnic group:	P.16
Applicants (all ages):	P.19
Applications (all ages):	P.20
Applicants (all ages) by sex:	P.21
Applications (all ages) by sex:	P.22
Applicants (all ages) by POLAR4 quintile:	P.23
Applications (all ages) by POLAR4 quintile:	P.24
Scotland domiciled applicants (all ages) by SIMD 2016 quintile:	P.25
Scotland domiciled applications (all ages) by SIMD 2016 quintile:	P.26
Applicants (all ages) by ethnic group:	P.27
Applications (all ages) by ethnic group:	P.28

## P.1 18 year old applicants

Statistic	2013	2014	2015	2016	2017	2018
June deadline applicants	590	685	785	930	985	905
Placed June deadline applicants	190	200	220	290	260	230
All placed applicants	575	250	670	690	620	575
June deadline applicants per 10,000 population	7.8	9.1	10.3	12.4	13.3	12.5
Placed June deadline applicants per 10,000	2.5	2.7	2.9	3.9	3.5	3.2
All placed applicants per 10,000 population	7.6	3.3	8.7	9.2	8.4	8.0

## P.2 18 year old applications

Statistic	2013	2014	2015	2016	2017	2018
June deadline applications	750	850	960	1,170	1,295	1,145
Offers	565	625	720	880	955	795
Offer rate	75.4%	73.5%	75.0%	75.2%	73.9%	69.5%

### P.3 18 year old applicants by sex

Statistic	Sex	2013	2014	2015	2016	2017	2018
June deadline applicants	Men	310	305	315	395	395	365
	Women	285	380	470	535	590	540
Placed June deadline applicants	Men	110	100	90	130	110	95
	Women	80	100	130	160	150	135
All placed applicants	Men	300	125	335	340	285	245
	Women	280	125	335	350	335	330
June deadline applicants per 10,000 population	Men	7.9	7.8	8.0	10.2	10.4	9.9
	Women	7.6	10.4	12.6	14.7	16.4	15.3
Placed June deadline applicants per 10,000 population	Men	2.8	2.6	2.3	3.4	2.9	2.6
	Women	2.2	2.7	3.5	4.4	4.2	3.8
All placed applicants per 10,000 population	Men	7.6	3.3	8.5	8.8	7.5	6.6
	Women	7.5	3.4	9.0	9.6	9.3	9.4

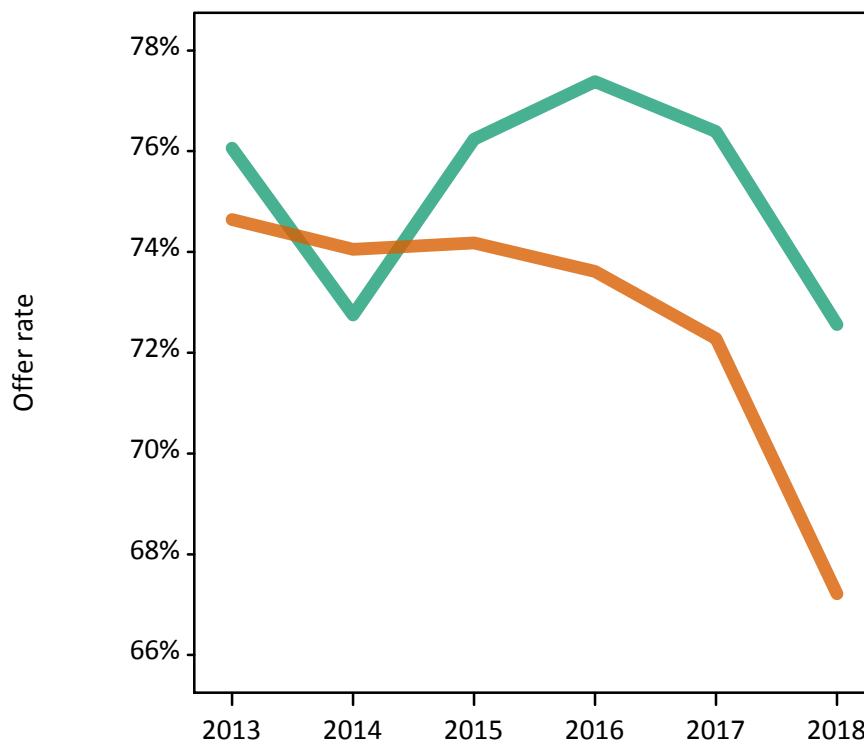
### P.4 18 year old applications by sex

Statistic	Sex	2013	2014	2015	2016	2017	2018
June deadline applications	Men	400	380	385	505	505	480
	Women	350	475	575	665	790	665
Offers	Men	305	275	290	390	385	350
	Women	260	350	430	490	570	445
Offer rate	Men	76.1%	72.8%	76.2%	77.4%	76.4%	72.6%
	Women	74.6%	74.1%	74.2%	73.6%	72.3%	67.2%
Average offer rate	Men	75.9%	73.5%	76.5%	75.9%	75.4%	70.1%
	Women	74.8%	73.5%	74.0%	74.7%	72.9%	69.0%
Percentage point difference between offer rate and average offer rate	Men	0.2	-0.7	-0.3	1.5	1.0	2.5
	Women	-0.2	0.6	0.2	-1.1	-0.6	-1.8
Contribution of group to the average offer rate	Men	0.726	0.681	0.614	0.625	0.619	0.580
	Women	0.687	0.745	0.744	0.717	0.757	0.696

### P.5 18 year old offer rate by sex

Note: The line for a group is not plotted when that group made fewer than 10 applications in any of the years from 2013-2018.

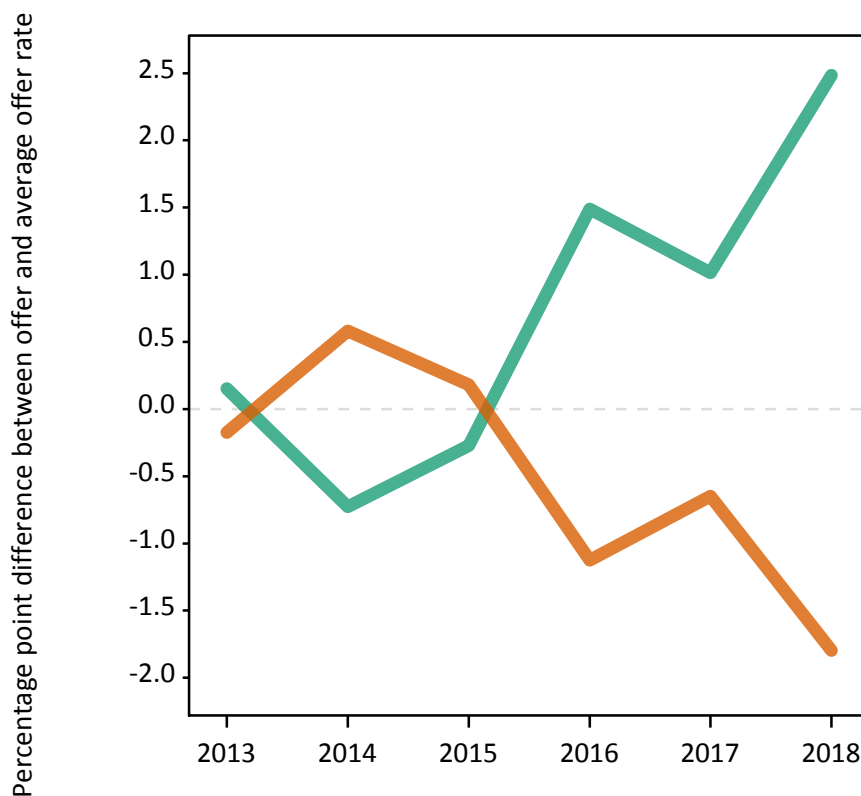
Men  
Women



### P.6 Percentage point difference between 18 year old offer rate and average offer rate by sex

Note: The line for a group is not plotted when that group made fewer than 50 applications in any of the years from 2013-2018.

Men  
Women



## P.7 18 year old applicants by POLAR4 quintile

Statistic	POLAR4 quintile	2013	2014	2015	2016	2017	2018
June deadline applicants	Quintile 1	35	35	40	45	55	75
	Quintile 2	85	85	110	135	120	130
	Quintile 3	125	140	170	200	225	190
	Quintile 4	180	210	235	265	305	250
	Quintile 5	165	215	230	280	285	255
Placed June deadline applicants	Quintile 1	10	5	10	10	10	10
	Quintile 2	25	25	30	35	35	30
	Quintile 3	40	35	50	50	55	45
	Quintile 4	65	75	75	95	95	65
	Quintile 5	45	60	60	100	65	70
All placed applicants	Quintile 1	30	5	25	25	30	25
	Quintile 2	90	30	105	105	90	85
	Quintile 3	115	55	130	125	135	110
	Quintile 4	195	90	215	225	210	180
	Quintile 5	140	70	195	210	155	175
June deadline applicants per 10,000 population	Quintile 1	2.6	2.3	2.7	3.3	4.0	5.6
	Quintile 2	5.9	5.9	7.5	9.5	8.5	9.8
	Quintile 3	8.5	9.4	11.4	13.8	15.5	13.6
	Quintile 4	11.5	13.8	15.1	17.5	20.0	16.9
	Quintile 5	9.5	12.7	13.2	16.2	16.7	15.3
Placed June deadline applicants per 10,000 population	Quintile 1	0.6	0.4	0.7	0.9	0.8	0.9
	Quintile 2	1.9	1.8	2.2	2.5	2.5	2.3
	Quintile 3	2.6	2.5	3.2	3.3	3.9	3.3
	Quintile 4	4.3	4.8	4.8	6.2	6.3	4.5
	Quintile 5	2.7	3.5	3.3	5.7	3.7	4.3
All placed applicants per 10,000 population	Quintile 1	2.2	0.5	1.8	2.0	2.3	1.8
	Quintile 2	6.1	2.2	7.2	7.3	6.4	6.3
	Quintile 3	7.9	3.6	8.7	8.6	9.2	7.9
	Quintile 4	12.7	5.9	13.8	14.6	13.9	12.2
	Quintile 5	8.2	4.2	11.2	12.1	9.1	10.3

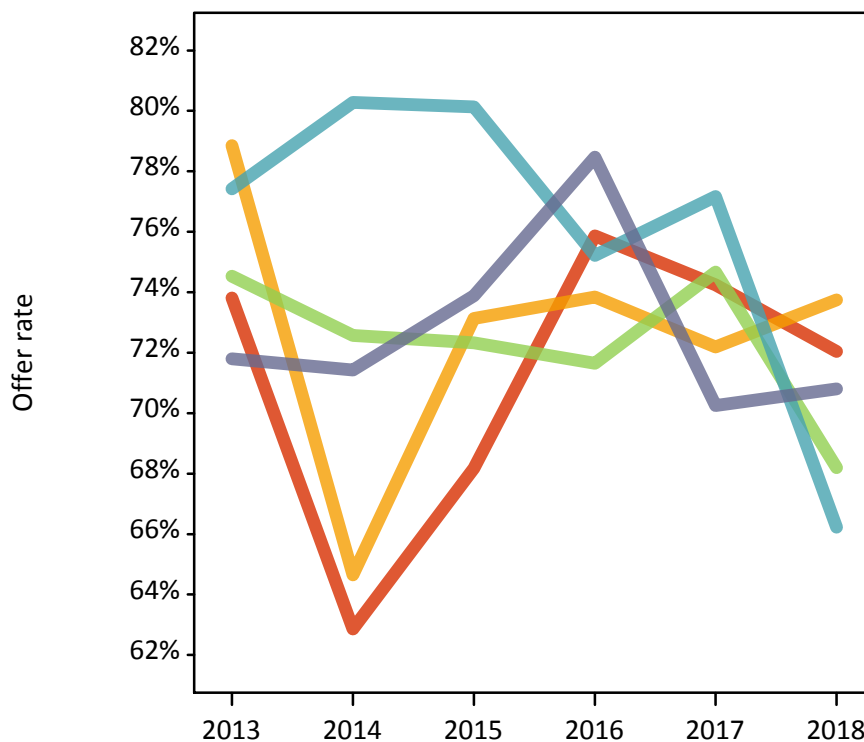
## P.8 18 year old applications by POLAR4 quintile

Statistic	POLAR4 quintile	2013	2014	2015	2016	2017	2018
June deadline applications	Quintile 1	40	35	45	60	65	95
	Quintile 2	105	100	135	170	170	160
	Quintile 3	160	175	205	260	300	260
	Quintile 4	250	285	300	340	405	310
	Quintile 5	195	260	270	340	355	320
Offers	Quintile 1	30	20	30	45	50	65
	Quintile 2	80	65	100	125	120	120
	Quintile 3	120	125	150	185	225	180
	Quintile 4	190	230	240	255	310	205
	Quintile 5	140	185	200	265	250	230
Offer rate	Quintile 1	73.8%	62.9%	68.2%	75.9%	74.2%	72.0%
	Quintile 2	78.8%	64.6%	73.1%	73.8%	72.2%	73.8%
	Quintile 3	74.5%	72.6%	72.3%	71.6%	74.7%	68.2%
	Quintile 4	77.4%	80.3%	80.1%	75.2%	77.2%	66.2%
	Quintile 5	71.8%	71.4%	73.9%	78.5%	70.3%	70.8%
Average offer rate	Quintile 1	75.2%	64.1%	69.7%	80.8%	70.4%	71.9%
	Quintile 2	78.5%	70.6%	72.7%	75.9%	75.4%	72.1%
	Quintile 3	74.2%	72.8%	74.8%	75.1%	75.1%	71.4%
	Quintile 4	76.6%	75.7%	78.0%	74.4%	74.6%	66.9%
	Quintile 5	73.1%	73.9%	74.4%	74.8%	72.0%	68.4%
Percentage point difference between offer rate and average offer rate	Quintile 1	N/A	N/A	N/A	-4.9	3.9	0.1
	Quintile 2	0.4	-5.9	0.5	-2.0	-3.2	1.6
	Quintile 3	0.4	-0.2	-2.4	-3.4	-0.4	-3.2
	Quintile 4	0.8	4.6	2.2	0.8	2.5	-0.7
	Quintile 5	-1.3	-2.4	-0.5	3.7	-1.7	2.4
Contribution of group to the average offer rate	Quintile 1	0.240	0.341	0.262	0.307	0.246	0.172
	Quintile 2	0.337	0.263	0.302	0.289	0.290	0.227
	Quintile 3	0.372	0.341	0.343	0.336	0.381	0.296
	Quintile 4	0.493	0.473	0.446	0.408	0.430	0.354
	Quintile 5	0.430	0.462	0.418	0.414	0.395	0.339

### P.9 18 year old offer rate by POLAR4 quintile

Note: The line for a group is not plotted when that group made fewer than 10 applications in any of the years from 2013-2018.

- Quintile 1
- Quintile 2
- Quintile 3
- Quintile 4
- Quintile 5



### P.10 Percentage point difference between 18 year old offer rate and average offer rate by POLAR4 quintile

Note: The line for a group is not plotted when that group made fewer than 50 applications in any of the years from 2013-2018.

- Quintile 1
- Quintile 2
- Quintile 3
- Quintile 4
- Quintile 5



## P.11 18 year old, Scotland domiciled applicants by SIMD 2016 quintile

Statistic	SIMD quintile	2013	2014	2015	2016	2017	2018
June deadline applicants	Quintile 1	50	55	60	80	85	85
	Quintile 2	85	85	120	140	130	135
	Quintile 3	130	160	180	200	215	200
	Quintile 4	150	180	220	250	260	235
	Quintile 5	115	135	130	195	200	180
Placed June deadline applicants	Quintile 1	20	15	10	25	15	15
	Quintile 2	25	20	40	40	35	30
	Quintile 3	45	55	50	80	70	60
	Quintile 4	60	60	85	85	85	75
	Quintile 5	40	40	30	55	50	45
All placed applicants	Quintile 1	45	20	30	40	40	30
	Quintile 2	80	30	100	95	95	95
	Quintile 3	160	70	180	190	145	145
	Quintile 4	185	75	240	230	210	200
	Quintile 5	105	50	110	125	115	100
June deadline applicants per 10,000 population	Quintile 1	37.6	42.5	47.1	67.9	74.2	74.7
	Quintile 2	71.4	72.3	105.2	126.3	122.2	126.7
	Quintile 3	111.7	136.8	154.7	175.8	196.2	191.2
	Quintile 4	119.7	148.2	181.4	209.5	221.3	208.5
	Quintile 5	90.1	103.7	102.1	156.0	158.2	149.1
Placed June deadline applicants per 10,000 population	Quintile 1	14.9	12.6	8.9	19.9	13.8	12.3
	Quintile 2	19.5	18.7	34.2	34.5	31.7	30.3
	Quintile 3	38.1	46.2	43.6	71.0	63.5	56.4
	Quintile 4	46.9	50.5	69.9	71.8	71.2	65.0
	Quintile 5	29.5	31.2	23.6	45.6	39.1	39.4
All placed applicants per 10,000 population	Quintile 1	33.7	16.5	22.7	33.9	34.5	26.4
	Quintile 2	67.1	24.7	89.4	84.5	86.8	90.8
	Quintile 3	134.5	59.0	155.6	170.5	135.4	139.6
	Quintile 4	148.9	61.9	198.8	191.9	181.8	177.3
	Quintile 5	80.8	39.0	85.6	100.0	92.7	84.6



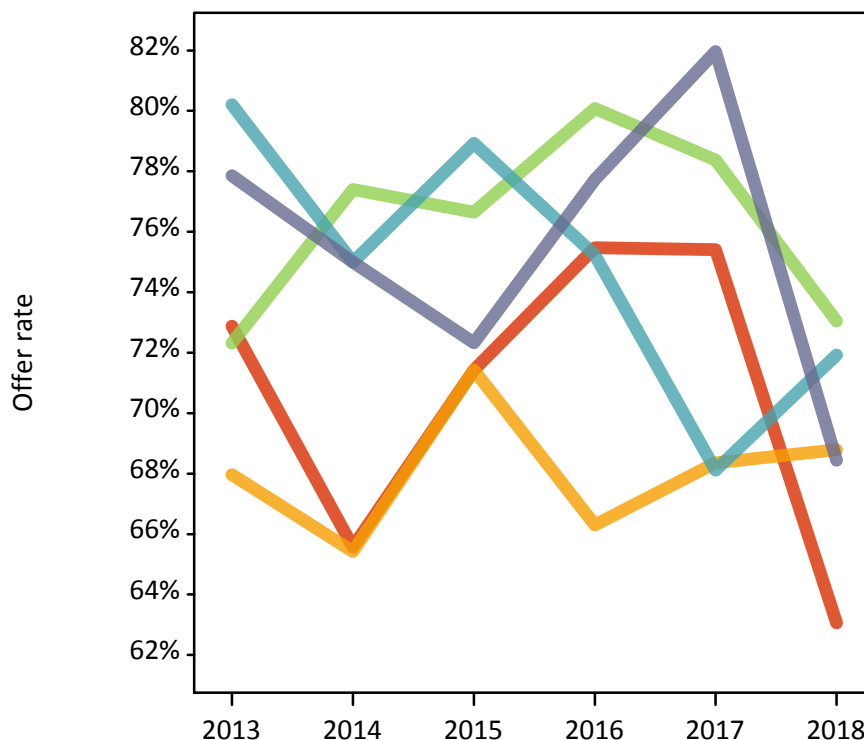
**P.12 18 year old, Scotland domiciled applications by SIMD 2016 quintile**

Statistic	SIMD quintile	2013	2014	2015	2016	2017	2018
June deadline applications	Quintile 1	60	60	70	105	120	110
	Quintile 2	105	105	140	180	175	175
	Quintile 3	175	210	225	250	295	255
	Quintile 4	195	235	280	325	345	285
	Quintile 5	150	170	160	240	245	245
Offers	Quintile 1	45	40	50	80	90	70
	Quintile 2	70	70	100	120	120	120
	Quintile 3	130	160	175	200	230	185
	Quintile 4	160	175	220	245	235	205
	Quintile 5	115	125	115	185	200	165
Offer rate	Quintile 1	72.9%	65.6%	71.4%	75.5%	75.4%	63.1%
	Quintile 2	68.0%	65.4%	71.4%	66.3%	68.4%	68.8%
	Quintile 3	72.3%	77.4%	76.7%	80.1%	78.4%	73.0%
	Quintile 4	80.2%	75.0%	78.9%	75.2%	68.1%	71.9%
	Quintile 5	77.9%	75.0%	72.3%	77.7%	82.0%	68.4%
Average offer rate	Quintile 1	74.8%	73.6%	74.1%	78.6%	77.3%	70.4%
	Quintile 2	70.9%	70.6%	73.9%	71.8%	73.7%	70.4%
	Quintile 3	73.6%	75.0%	74.9%	77.8%	76.7%	71.9%
	Quintile 4	77.2%	73.7%	77.5%	75.3%	69.8%	70.5%
	Quintile 5	77.5%	73.6%	74.0%	74.5%	76.7%	66.9%
Percentage point difference between offer rate and average offer rate	Quintile 1	-1.9	-8.1	-2.7	-3.1	-1.9	-7.4
	Quintile 2	-2.9	-5.2	-2.4	-5.5	-5.3	-1.6
	Quintile 3	-1.3	2.4	1.8	2.3	1.6	1.2
	Quintile 4	3.0	1.3	1.4	-0.1	-1.7	1.5
	Quintile 5	0.4	1.4	-1.7	3.3	5.2	1.6
Contribution of group to the average offer rate	Quintile 1	0.177	0.221	0.209	0.234	0.234	0.152
	Quintile 2	0.280	0.232	0.255	0.279	0.249	0.223
	Quintile 3	0.379	0.414	0.395	0.327	0.334	0.310
	Quintile 4	0.396	0.410	0.425	0.397	0.367	0.304
	Quintile 5	0.334	0.309	0.308	0.295	0.298	0.284

**P.13 18 year old, Scotland domiciled offer rate by SIMD 2016 quintile**

Note: The line for a group is not plotted when that group made fewer than 10 applications in any of the years from 2013-2018.

- Quintile 1
- Quintile 2
- Quintile 3
- Quintile 4
- Quintile 5



**P.14 Percentage point difference between 18 year old, Scotland domiciled offer rate and average offer rate by SIMD 2016 quintile**

Note: The line for a group is not plotted when that group made fewer than 50 applications in any of the years from 2013-2018.

- Quintile 1
- Quintile 2
- Quintile 3
- Quintile 4
- Quintile 5



## P.15 18 year old applicants by ethnic group

Statistic	Ethnic group	2013	2014	2015	2016	2017	2018
June deadline applicants	Asian	10	10	20	5	20	15
	Black	0	0	5	5	10	5
	Mixed	5	10	5	15	10	15
	White	570	660	750	900	940	865
	Other	0	0	0	5	0	0
Placed June deadline applicants	Asian	0	0	0	0	0	5
	Black	0	0	0	0	0	0
	Mixed	5	5	0	5	5	0
	White	185	195	215	285	255	225
	Other	0	0	0	0	0	0
All placed applicants	Asian	5	0	5	10	5	10
	Black	0	0	0	5	0	0
	Mixed	5	5	5	10	5	10
	White	560	245	660	670	605	550
	Other	0	0	0	0	0	5
June deadline applicants per 10,000 population	Asian	1.5	1.5	2.5	0.6	2.4	2.2
	Black	0.0	0.0	1.6	1.3	3.2	2.2
	Mixed	2.2	3.1	2.3	4.1	3.7	4.6
	White	9.1	10.7	12.1	14.9	15.9	15.0
	Other	0.0	0.0	0.0	5.0	0.0	0.0
Placed June deadline applicants per 10,000 population	Asian	0.0	0.0	0.0	0.0	0.0	0.4
	Black	0.0	0.0	0.0	0.0	0.0	0.0
	Mixed	1.1	1.0	0.0	1.3	0.9	0.0
	White	2.9	3.2	3.5	4.7	4.3	3.9
	Other	0.0	0.0	0.0	0.0	0.0	0.0
All placed applicants per 10,000 population	Asian	1.1	0.0	0.6	1.1	1.0	1.2
	Black	0.0	0.0	0.0	1.0	0.0	0.0
	Mixed	2.2	1.4	1.3	3.2	1.2	2.5
	White	8.9	4.0	10.6	11.0	10.2	9.6
	Other	0.0	0.0	0.0	0.0	0.0	4.8

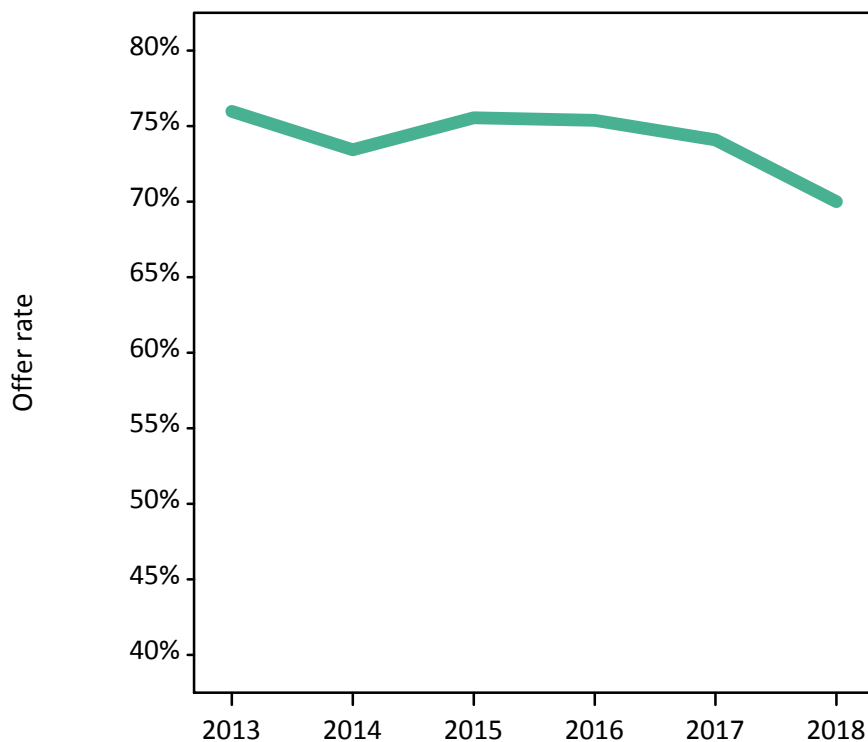
## P.16 18 year old applications by ethnic group

Statistic	Ethnic group	2013	2014	2015	2016	2017	2018
June deadline applications	Asian	15	10	20	5	25	20
	Black	0	0	5	5	10	5
	Mixed	5	10	10	15	10	20
	White	725	830	925	1,135	1,240	1,090
	Other	0	0	0	5	0	0
Offers	Asian	5	10	10	5	15	15
	Black	0	0	0	5	10	0
	Mixed	5	5	5	15	10	15
	White	550	610	700	855	920	765
	Other	0	0	0	0	0	0
Offer rate	Asian	42.9%	100.0%	61.1%	N/A	54.2%	63.6%
	Black	N/A	N/A	N/A	N/A	100.0%	N/A
	Mixed	N/A	N/A	N/A	100.0%	100.0%	68.4%
	White	76.0%	73.4%	75.5%	75.4%	74.1%	70.0%
	Other	N/A	N/A	N/A	N/A	N/A	N/A
Average offer rate	Asian	55.1%	77.4%	63.7%	N/A	71.1%	72.2%
	Black	N/A	N/A	N/A	N/A	69.6%	N/A
	Mixed	N/A	N/A	N/A	82.7%	76.8%	63.4%
	White	75.7%	73.4%	75.5%	75.2%	73.9%	69.6%
	Other	N/A	N/A	N/A	N/A	N/A	N/A
Percentage point difference between offer rate and average offer rate	Asian	N/A	N/A	N/A	N/A	N/A	N/A
	Black	N/A	N/A	N/A	N/A	N/A	N/A
	Mixed	N/A	N/A	N/A	N/A	N/A	N/A
	White	0.3	-0.0	0.1	0.1	0.2	0.4
	Other	N/A	N/A	N/A	N/A	N/A	N/A
Contribution of group to the average offer rate	Asian	0.309	0.490	0.397	N/A	0.257	0.240
	Black	N/A	N/A	N/A	N/A	0.584	N/A
	Mixed	N/A	N/A	N/A	0.211	0.204	0.086
	White	0.974	0.980	0.974	0.980	0.972	0.958
	Other	N/A	N/A	N/A	N/A	N/A	N/A

### P.17 18 year old offer rate by ethnic group

Note: The line for a group is not plotted when that group made fewer than 10 applications in any of the years from 2013-2018.

- Asian
- Black
- Mixed
- White
- Other



### P.18 Percentage point difference between 18 year old offer rate and average offer rate by ethnic group

Note: The line for a group is not plotted when that group made fewer than 50 applications in any of the years from 2013-2018.

- Asian
- Black
- Mixed
- White
- Other



### P.19 Applicants (all ages)

Statistic	2013	2014	2015	2016	2017	2018
June deadline applicants	1,215	1,490	2,050	2,525	3,035	3,105
Placed June deadline applicants	405	495	655	825	920	980
All placed applicants	2,315	640	2,560	2,705	2,710	2,815

### P.20 Applications (all ages)

Statistic	2013	2014	2015	2016	2017	2018
June deadline applications	1,475	1,820	2,500	3,135	3,845	3,845
Offers	1,030	1,265	1,595	1,925	2,255	2,180
Offer rate	69.9%	69.4%	63.8%	61.4%	58.6%	56.7%

## P.21 Applicants (all ages) by sex

Statistic	Sex	2013	2014	2015	2016	2017	2018
June deadline applicants	Men	615	655	790	995	1,100	1,105
	Women	600	835	1,265	1,530	1,935	2,000
Placed June deadline applicants	Men	220	215	260	345	335	330
	Women	190	280	390	480	590	650
All placed applicants	Men	1,060	280	1,140	1,210	1,075	1,060
	Women	1,250	360	1,420	1,495	1,635	1,755

## P.22 Applications (all ages) by sex

Statistic	Sex	2013	2014	2015	2016	2017	2018
June deadline applications	Men	755	785	965	1,255	1,390	1,380
	Women	720	1,035	1,535	1,880	2,455	2,465
Offers	Men	540	545	645	815	890	865
	Women	490	720	950	1,110	1,365	1,320
Offer rate	Men	71.4%	69.3%	66.8%	65.1%	64.1%	62.5%
	Women	68.3%	69.6%	62.0%	58.9%	55.5%	53.5%

### P.23 Applicants (all ages) by POLAR4 quintile

Statistic	POLAR4 quintile	2013	2014	2015	2016	2017	2018
June deadline applicants	Quintile 1	85	85	100	130	170	175
	Quintile 2	175	210	280	345	460	515
	Quintile 3	260	325	475	545	635	665
	Quintile 4	370	440	630	810	900	880
	Quintile 5	325	425	555	695	860	855
Placed June deadline applicants	Quintile 1	25	20	25	30	40	45
	Quintile 2	65	70	90	95	145	175
	Quintile 3	90	110	150	155	190	215
	Quintile 4	130	170	225	315	315	295
	Quintile 5	95	125	160	225	235	250
All placed applicants	Quintile 1	140	25	145	135	140	125
	Quintile 2	405	95	435	460	475	500
	Quintile 3	485	145	540	520	530	570
	Quintile 4	720	205	840	935	915	910
	Quintile 5	560	165	595	655	645	700

### P.24 Applications (all ages) by POLAR4 quintile

Statistic	POLAR4 quintile	2013	2014	2015	2016	2017	2018
June deadline applications	Quintile 1	95	95	115	155	205	215
	Quintile 2	205	240	350	420	610	645
	Quintile 3	325	405	580	690	825	860
	Quintile 4	465	575	780	1,005	1,160	1,075
	Quintile 5	380	505	670	855	1,040	1,040
Offers	Quintile 1	70	60	75	100	115	120
	Quintile 2	145	155	210	250	345	380
	Quintile 3	230	280	355	420	500	500
	Quintile 4	325	415	530	620	700	590
	Quintile 5	255	350	425	535	590	585
Offer rate	Quintile 1	73.7%	63.9%	63.5%	62.8%	55.1%	57.3%
	Quintile 2	71.0%	64.7%	60.7%	59.3%	56.2%	58.4%
	Quintile 3	71.1%	69.6%	61.2%	61.0%	60.8%	58.2%
	Quintile 4	69.8%	72.6%	68.0%	61.6%	60.5%	55.0%
	Quintile 5	67.3%	69.1%	63.0%	62.5%	56.7%	56.4%



## P.25 Scotland domiciled applicants (all ages) by SIMD 2016 quintile

Statistic	SIMD quintile	2013	2014	2015	2016	2017	2018
June deadline applicants	Quintile 1	120	135	170	220	280	300
	Quintile 2	165	215	300	355	455	485
	Quintile 3	245	340	490	575	720	730
	Quintile 4	305	370	600	700	755	815
	Quintile 5	205	260	315	490	575	540
Placed June deadline applicants	Quintile 1	45	50	40	60	65	80
	Quintile 2	65	75	105	105	135	165
	Quintile 3	95	135	175	235	270	270
	Quintile 4	125	135	220	255	265	290
	Quintile 5	65	80	90	155	160	155
All placed applicants	Quintile 1	220	65	200	230	225	235
	Quintile 2	390	90	460	435	475	485
	Quintile 3	620	180	725	775	755	785
	Quintile 4	710	180	800	820	810	880
	Quintile 5	345	105	350	420	405	400

## P.26 Scotland domiciled applications (all ages) by SIMD 2016 quintile

Statistic	SIMD quintile	2013	2014	2015	2016	2017	2018
June deadline applications	Quintile 1	140	165	205	270	355	380
	Quintile 2	195	265	355	455	590	600
	Quintile 3	330	435	605	725	950	920
	Quintile 4	385	460	770	895	970	1,015
	Quintile 5	245	315	380	595	700	685
Offers	Quintile 1	105	95	125	170	210	210
	Quintile 2	135	180	220	265	350	355
	Quintile 3	220	320	405	450	585	550
	Quintile 4	290	340	505	565	560	585
	Quintile 5	175	230	240	385	420	385
Offer rate	Quintile 1	73.6%	59.5%	62.3%	61.8%	59.0%	55.8%
	Quintile 2	69.9%	67.4%	62.0%	58.8%	59.2%	59.5%
	Quintile 3	67.4%	73.3%	66.7%	62.2%	61.2%	59.9%
	Quintile 4	74.9%	74.0%	66.0%	63.0%	57.6%	57.5%
	Quintile 5	71.0%	72.9%	63.0%	64.5%	60.0%	56.7%

## P.27 Applicants (all ages) by ethnic group

Statistic	Ethnic group	2013	2014	2015	2016	2017	2018
June deadline applicants	Asian	30	30	40	25	55	65
	Black	15	15	15	15	40	35
	Mixed	15	20	25	45	50	45
	White	1,140	1,410	1,950	2,405	2,860	2,925
	Other	5	5	10	15	5	10
Placed June deadline applicants	Asian	5	5	5	5	5	10
	Black	0	5	0	5	5	5
	Mixed	5	5	5	10	10	10
	White	390	480	640	795	890	945
	Other	5	0	5	0	0	0
All placed applicants	Asian	35	5	30	45	30	30
	Black	10	5	10	15	20	15
	Mixed	20	5	20	30	30	30
	White	2,235	615	2,480	2,590	2,600	2,655
	Other	10	0	10	5	10	65

## P.28 Applications (all ages) by ethnic group

Statistic	Ethnic group	2013	2014	2015	2016	2017	2018
June deadline applications	Asian	35	30	40	30	65	75
	Black	15	15	15	15	45	40
	Mixed	20	20	25	50	55	55
	White	1,385	1,735	2,395	2,995	3,650	3,630
	Other	5	10	10	15	5	10
Offers	Asian	15	15	20	15	25	25
	Black	5	5	10	10	20	15
	Mixed	10	15	15	30	30	35
	White	990	1,220	1,540	1,850	2,160	2,090
	Other	5	0	5	5	5	5
Offer rate	Asian	37.8%	53.1%	46.3%	53.1%	40.6%	32.0%
	Black	43.8%	35.3%	50.0%	53.3%	41.3%	35.0%
	Mixed	55.0%	65.0%	64.0%	64.6%	57.1%	58.9%
	White	71.4%	70.4%	64.4%	61.7%	59.2%	57.5%
	Other	N/A	N/A	N/A	0.0%	N/A	N/A

## Technical Notes and Definitions

### UCAS undergraduate scheme

#### Adjustment

Adjustment allows applicants who have met and exceeded the terms of their conditional firm offer to seek and find a place at another provider whilst keeping their place at their original firm choice provider.

#### Clearing

Clearing is a route for applicants that are not placed and holding no offers to find a place on courses with vacancies.

#### Cycle year

The UCAS application cycle which runs from September to October the following year. For example the 2018 cycle runs from September 2017 through to October 2018.

#### End of cycle

The point in the cycle to which the numbers in this report refer, and the point at which the cycle is closed such that no more applications or offers can be made, and no more applicants can be placed. Numbers reported at the end of cycle exclude information on a small number of applicants who cancelled during the cycle.

#### Extra

Applicants who are unsuccessful in obtaining an offer or decline all offers may be eligible to apply through Extra, where they can apply to one further course at a time. Extra operates from 25 February until early July. It provides applicants who are eligible the possibility of obtaining an offer before exam results are published and Clearing starts.

#### June 30 deadline

The deadline for main scheme applications. Applicants who apply after this date will go directly into Clearing.

#### Record of Prior Acceptance (RPA)

RPA is an acceptance route used when a provider informs UCAS of applicants it has accepted outside of the normal application process (e.g. individuals who have applied directly to the provider).

### Reporting groups

#### Ethnic group

High level grouping of ethnic origin as declared by the applicant: 'White', 'Black', 'Asian', 'Mixed', 'Other', 'Unknown'. Applicants who declare themselves as 'Unknown' ethnic origin are not reported in these tables, but are included in the associated csv data file.

#### POLAR4 quintile

Developed by OfS, POLAR4 classifies small areas across the UK into five groups according to their level of young participation in Higher Education. Each of these groups represents around 20 per cent of young people and is ranked from Quintile 1 (areas with the lowest young participation rates, considered as the most disadvantaged) to Quintile 5 (highest young participation rates, considered most advantaged). POLAR4 is based on the participation rates of young people between 2009-10 and 2013-14 if they entered higher education aged 18, or between 2010-11 and 2014-15 if they entered aged 19, therefore is most suitable for applicants aged 19 and under. These groups are assigned using the postcode declared by the applicant at the time of their application. If a UK postcode is invalid, considered unsafe for measurement or there is no link to Census geography possible then the applicant is not assigned to a quintile. Applicants with no POLAR4 quintile are not reported.

#### Sex

Sex as declared by the applicant.

### **SIMD 2016 quintile**

Scottish index of multiple deprivation (SIMD) identifies small area concentrations of multiple deprivation across all of Scotland, providing a relative measure of deprivation amongst 6505 small areas (data zones) based on 7 socio-economic domains. These small areas are classified into five groups ranked from Quintile 1 (considered the most deprived) to Quintile 5 (considered least deprived), with equal populations in each quintile. Quintiles are assigned using the postcode declared by the applicant, applicants declaring invalid postcodes are classified as 'Not assigned' and are not reported.

SIMD is only defined for applicants domiciled in Scotland, therefore any applicants domiciled outside of Scotland cannot be assigned to an SIMD quintile and so are not reported for this measure.

SIMD is only reported for providers in Scotland. Application and entry rates by SIMD are reported in the 2018 End of Cycle Report and the 2018 cycle January deadline application rate report.

### **Statistics reported in the tables**

#### **All placed applicants**

The number of applicants placed for entry into higher education at the provider through one of their choices, including any choices made through Extra, or via Adjustment, Clearing or RPA.

#### **All placed applicants per 10,000 population**

The number of total UK domiciled 18 year old placed applicants for entry into higher education at the provider divided by the number of UK 18 year olds in the population, multiplied by 10,000. This gives the number of 18 year olds, for every 10,000 in the population, that were placed at the provider through one of their choices, including any choices made through Extra, or via Adjustment, Clearing or RPA. It is an alternative way of expressing the entry rate to a provider. By referencing the underlying population this statistic shows how the number of placed applicants is changing in relation to the available pool of potential applicants and so gives the chance that somebody from the group will be placed at a provider.

This statistic is only reported for 18 year olds.

#### **Average offer rate**

The offer rate that you might expect if the predicted grades and subject choice of applicants were the only factors that influenced whether an applicant was made an offer by the provider. The average offer rate is calculated by dividing applicants according to their specific combination of grades (for A levels the best three predicted grades are used, for BTECs, International Baccalaureate and Scottish Highers and Advanced Highers, predicted grades along with any grades already achieved upon applying are used) and subject choice. For each combination the number of main scheme offers is divided by the number of main scheme applications, to give an overall offer rate. This is then multiplied by the number of applications made by the group for which the average offer rate is being calculated (for example POLAR4 quintile 1), to give an average number of offers for that group. These average number of offers are then added together across all combinations of predicted grade and subject and divided by the number of main scheme applications from the group to give the average offer rate.

The average offer rate does not attempt to control for any other factors that may play a part in the decision to make an offer, such as the subject of the qualifications studied, their relevance to a course, or the grade in each subject; higher numbers of A levels being studied; the exact profile of grades predicted; personal statements; teacher references; interviews; or any other criteria (such as work experience or portfolios) that may be part of the admissions decision.

This statistic is only reported for 18 year olds.

### Contribution of group to the average offer rate

The way in which the average offer rate is defined means that the pattern of application and offers of a group (for example POLAR4 quintile 1) will always contribute, in part, to the average offer rate for that group. When this contribution is large, the average offer rate will mainly reflect the patterns for the group, meaning that the value of the average offer rate will be similar to the offer rate, the percentage point difference statistic will be small, and any real difference between the offer rate and what might be expected given the predicted grades and subject choices of the applicants will be difficult to detect.

Values of the contribution of group to the average offer rate range between 0 and 1. The closer the value is to 1 the greater the contribution a group makes to its own average offer rate.

This statistic is only reported for 18 year olds.

### Placed June deadline applicants

An applicant who has been placed for entry into higher education at the provider through a June deadline application.

### Placed June deadline applicants per 10,000 population

The number of UK domiciled 18 year old placed June deadline applicants at the provider divided by the number of UK 18 year olds in the population, multiplied by 10,000. This gives the number of 18 year olds, for every 10,000 in the population, that were placed at the provider through one of their June deadline applications. It is an alternative way of expressing the entry rate to a provider, but for placed June deadline applicants only. By referencing the underlying population this statistic shows how the number of placed June deadline applicants is changing in relation to the available pool of potential 18 year old applicants and so gives the chance that somebody from the group will be placed at a provider through a June deadline application.

This statistic is only reported for 18 year olds.

### June deadline applications

An application (or choice) to a course in higher education to the provider that is made by the June 30 deadline. Each applicant can make up to five choices this way. The number of June deadline applications does not include choices made through the following routes: Clearing, Extra, Adjustment and RPAs. Applications made to October deadline courses received after the October deadline are not included in these statistics.

### June deadline applicants

The number of applicants that made at least one application to the provider by the June 30 deadline.

### June deadline applicants per 10,000 population

The number of UK domiciled 18 year old June deadline applicants to the provider divided by the number of UK 18 year olds in the population, multiplied by 10,000. This gives the number of 18 year olds, for every 10,000 in the population, who applied by the June 30 deadline. It is equivalent to the application rate. By referencing the underlying population this statistic shows how the number of June deadline applicants is changing in relation to the available pool of potential 18 year old applicants and so gives the chance that somebody from the group will apply to a provider by the June 30 deadline.

This statistic is only reported for 18 year olds.

### Offers

An offer is defined as a provider's decision in response to an application to offer a place to an applicant, often subject to the applicant satisfying academic and/or other criteria, via a June deadline application (i.e. does not cover choices made through the following routes: Clearing, Extra, Adjustment and RPAs).

### Offer rate

The number of offers made divided by the number of June deadline applications. This gives the proportion of all June deadline applications to the provider that received an offer.

### Percentage point difference between offer rate and average offer rate

The offer rate minus the average offer rate.

The percentage point difference can be compared to the expected range of statistical variation resulting from the calculation of the average offer rate using the Average Offer Rate Lookup Table. Where the value of the percentage point difference lies outside of this range, the percentage point difference may be considered to represent a real difference between the offer rate and the average offer rate.

### Other definitions

#### Age

This analysis uses country-specific age definitions that align with the cut off points for school and college cohorts within the different administrations of the UK. For England and Wales, ages are defined on the 31 August, for Northern Ireland on the 1 July and for Scotland on the 28 February the following year. Defining ages in this way matches the assignment of children to school cohorts. For applicants outside of the UK a cohort cut off of 31 August has been used. Numbers for applicants aged 17 and under are included in the tables that report numbers for all age groups. Providers in Scotland typically receive a higher proportion of applicants aged 17 and under compared to providers elsewhere in the UK.

#### Provider

A higher education provider - a university or college.

#### UK domiciled

Declared area of permanent residence within England, Northern Ireland, Scotland and Wales. Applicants from the Channel Islands and Isle of Man are not included.