

B78 University of Bristol

Cycle years: 2013 - 2018

Cycle Reference Point: End of Cycle

Applicant coverage: UK domiciled

Reporting groups: Sex, POLAR4, ethnic group

Applicant statistics: June deadline applicants, placed June deadline applicants, all placed applicants, June deadline applicants per 10,000 population, placed June deadline applicants per 10,000 population, all placed applicants per 10,000 population

Application statistics: June deadline applications, offers, offer rate, average offer rate, percentage point difference between offer rate and average offer rate, contribution of group to the average offer rate

Non-disclosure controls: To avoid the disclosure of information about any individual the following measures are taken

- Applicants, placed applicants, applications and offers are rounded to the nearest 5.
- Applicants/placed applicants per 10,000 population figures are reported as 0 if the applicant/placed applicant figures are rounded to 0.
- All statistics related to the offer rate are not reported when the number of applications for a group is less than 10. The percentage point difference between the offer rate and the average offer rate is not reported when the number of applications for a group is less than 50.
- Offer rates are reported as 0% if there are fewer than 5 offers, and 100% if the number of offers is within 5 of the number of applications. When the offer rate is reported as 0% or 100%, it is reported in italics.

Contents:

- 18 year old applicants: P.1
- 18 year old applications: P.2
- 18 year old applicants by sex: P.3
- 18 year old applications by sex: P.4
- 18 year old applicants by POLAR4 quintile: P.7
- 18 year old applications by POLAR4 quintile: P.8
- 18 year old applicants by ethnic group: P.11
- 18 year old applications by ethnic group: P.12
- Applicants (all ages): P.15
- Applications (all ages): P.16
- Applicants (all ages) by sex: P.17
- Applications (all ages) by sex: P.18
- Applicants (all ages) by POLAR4 quintile: P.19
- Applications (all ages) by POLAR4 quintile: P.20
- Applicants (all ages) by ethnic group: P.21
- Applications (all ages) by ethnic group: P.22

P.1 18 year old applicants

Statistic	2013	2014	2015	2016	2017	2018
June deadline applicants	20,570	21,360	23,655	23,880	24,060	27,385
Placed June deadline applicants	2,860	3,025	3,195	3,300	3,320	3,425
All placed applicants	2,930	3,145	3,295	3,370	3,545	3,560
June deadline applicants per 10,000 population	270.3	283.6	308.7	318.6	324.8	379.1
Placed June deadline applicants per 10,000	37.6	40.2	41.7	44.0	44.8	47.4
All placed applicants per 10,000 population	38.5	41.7	43.0	45.0	47.8	49.3

P.2 18 year old applications

Statistic	2013	2014	2015	2016	2017	2018
June deadline applications	20,900	21,675	24,130	24,380	24,645	28,140
Offers	12,915	15,305	16,235	16,925	17,580	20,425
Offer rate	61.8%	70.6%	67.3%	69.4%	71.3%	72.6%

P.3 18 year old applicants by sex

Statistic	Sex	2013	2014	2015	2016	2017	2018
June deadline applicants	Men	9,920	10,430	10,925	10,860	11,235	12,755
	Women	10,655	10,930	12,730	13,020	12,825	14,630
Placed June deadline applicants	Men	1,375	1,485	1,475	1,450	1,490	1,535
	Women	1,485	1,540	1,720	1,850	1,830	1,890
All placed applicants	Men	1,405	1,525	1,525	1,475	1,575	1,580
	Women	1,530	1,620	1,770	1,900	1,970	1,980
June deadline applicants per 10,000 population	Men	254.1	269.4	278.4	282.7	295.8	344.4
	Women	287.5	298.6	340.6	356.3	355.2	415.8
Placed June deadline applicants per 10,000 population	Men	35.2	38.4	37.6	37.7	39.3	41.4
	Women	40.1	42.1	46.0	50.6	50.7	53.7
All placed applicants per 10,000 population	Men	35.9	39.4	38.8	38.4	41.5	42.7
	Women	41.3	44.2	47.4	51.9	54.6	56.2

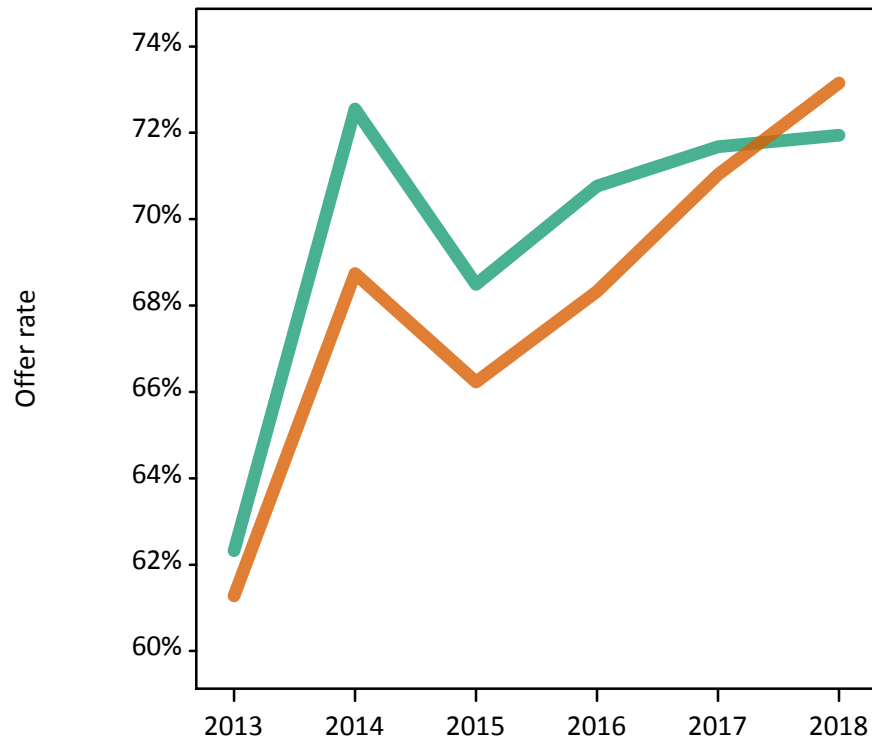
P.4 18 year old applications by sex

Statistic	Sex	2013	2014	2015	2016	2017	2018
June deadline applications	Men	10,090	10,595	11,130	11,060	11,495	13,070
	Women	10,815	11,080	13,000	13,315	13,150	15,070
Offers	Men	6,290	7,685	7,620	7,830	8,240	9,405
	Women	6,625	7,615	8,610	9,100	9,340	11,020
Offer rate	Men	62.3%	72.6%	68.5%	70.8%	71.7%	71.9%
	Women	61.3%	68.7%	66.2%	68.3%	71.0%	73.1%
Average offer rate	Men	63.3%	73.1%	69.0%	71.3%	71.9%	72.7%
	Women	60.3%	68.3%	65.8%	67.9%	70.8%	72.5%
Percentage point difference between offer rate and average offer rate	Men	-1.0	-0.5	-0.5	-0.5	-0.3	-0.8
	Women	0.9	0.5	0.4	0.4	0.2	0.7
Contribution of group to the average offer rate	Men	0.597	0.602	0.581	0.578	0.590	0.581
	Women	0.624	0.620	0.641	0.649	0.642	0.637

P.5 18 year old offer rate by sex

Note: The line for a group is not plotted when that group made fewer than 10 applications in any of the years from 2013-2018.

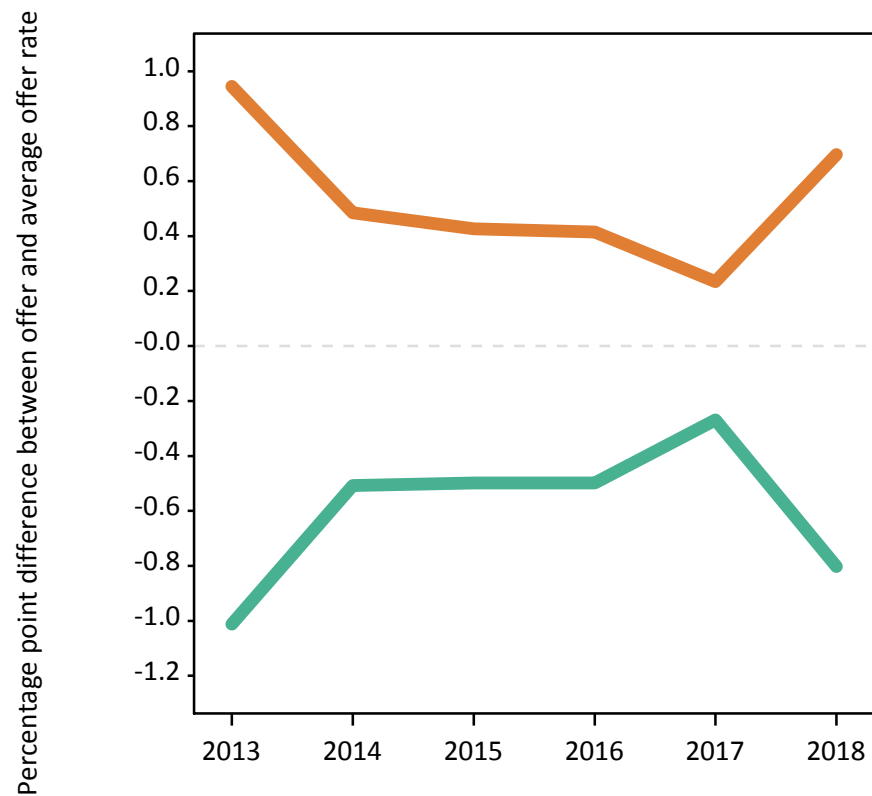
Men
Women



P.6 Percentage point difference between 18 year old offer rate and average offer rate by sex

Note: The line for a group is not plotted when that group made fewer than 50 applications in any of the years from 2013-2018.

Men
Women



P.7 18 year old applicants by POLAR4 quintile

Statistic	POLAR4 quintile	2013	2014	2015	2016	2017	2018
June deadline applicants	Quintile 1	895	1,020	1,205	1,205	1,375	1,725
	Quintile 2	1,830	1,850	1,980	2,080	2,230	2,800
	Quintile 3	2,825	2,910	3,270	3,330	3,390	3,945
	Quintile 4	4,320	4,395	4,945	4,905	4,960	5,745
	Quintile 5	10,665	11,125	12,210	12,305	12,055	13,085
Placed June deadline applicants	Quintile 1	75	105	115	110	150	175
	Quintile 2	175	190	190	220	290	330
	Quintile 3	345	335	395	405	385	425
	Quintile 4	555	590	645	635	610	650
	Quintile 5	1,700	1,795	1,850	1,915	1,885	1,830
All placed applicants	Quintile 1	80	105	115	115	160	185
	Quintile 2	175	205	195	225	305	335
	Quintile 3	360	345	410	410	410	440
	Quintile 4	570	610	660	645	655	680
	Quintile 5	1,745	1,865	1,910	1,965	2,005	1,910
June deadline applicants per 10,000 population	Quintile 1	63.5	72.6	85.0	88.5	102.7	132.8
	Quintile 2	125.9	128.9	135.5	146.4	159.7	206.9
	Quintile 3	190.0	198.9	218.3	227.2	234.1	279.7
	Quintile 4	280.3	288.3	319.3	321.7	327.9	389.4
	Quintile 5	619.2	653.8	702.9	713.3	703.2	777.1
Placed June deadline applicants per 10,000 population	Quintile 1	5.4	7.5	8.1	8.1	11.2	13.5
	Quintile 2	11.9	13.4	12.9	15.6	20.6	24.5
	Quintile 3	23.3	22.7	26.5	27.7	26.6	30.1
	Quintile 4	36.1	38.8	41.5	41.6	40.3	44.1
	Quintile 5	98.8	105.4	106.5	111.1	109.9	108.7
All placed applicants per 10,000 population	Quintile 1	5.5	7.6	8.1	8.3	12.0	14.1
	Quintile 2	12.1	14.1	13.3	15.9	21.7	24.9
	Quintile 3	24.1	23.6	27.3	28.1	28.4	31.2
	Quintile 4	37.0	40.1	42.7	42.4	43.4	46.2
	Quintile 5	101.3	109.6	109.9	113.8	117.0	113.3

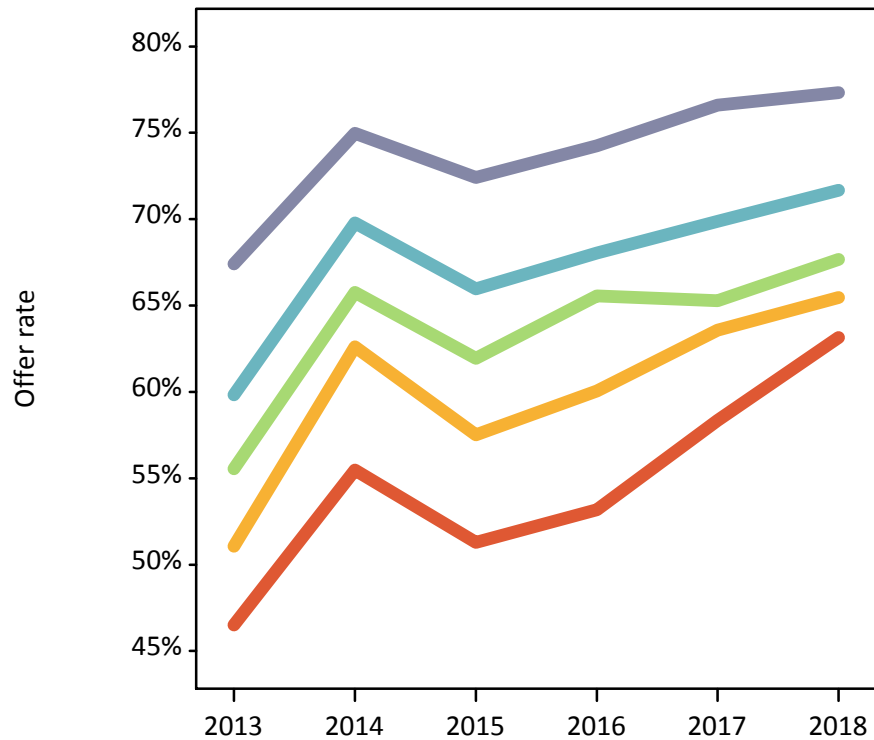
P.8 18 year old applications by POLAR4 quintile

Statistic	POLAR4 quintile	2013	2014	2015	2016	2017	2018
June deadline applications	Quintile 1	915	1,040	1,245	1,230	1,425	1,795
	Quintile 2	1,865	1,895	2,030	2,135	2,290	2,900
	Quintile 3	2,870	2,960	3,350	3,400	3,475	4,075
	Quintile 4	4,395	4,455	5,035	5,015	5,070	5,875
	Quintile 5	10,810	11,265	12,430	12,545	12,325	13,410
Offers	Quintile 1	425	580	640	655	830	1,135
	Quintile 2	955	1,185	1,165	1,280	1,455	1,895
	Quintile 3	1,595	1,945	2,075	2,230	2,270	2,760
	Quintile 4	2,630	3,110	3,320	3,410	3,545	4,210
	Quintile 5	7,285	8,445	9,000	9,315	9,440	10,370
Offer rate	Quintile 1	46.5%	55.5%	51.3%	53.2%	58.4%	63.2%
	Quintile 2	51.1%	62.6%	57.5%	60.1%	63.6%	65.5%
	Quintile 3	55.6%	65.8%	61.9%	65.6%	65.3%	67.7%
	Quintile 4	59.8%	69.8%	66.0%	68.0%	69.9%	71.7%
	Quintile 5	67.4%	75.0%	72.4%	74.3%	76.6%	77.3%
Average offer rate	Quintile 1	49.8%	59.6%	54.1%	56.6%	59.9%	63.0%
	Quintile 2	55.0%	65.2%	58.3%	61.5%	65.6%	65.7%
	Quintile 3	57.7%	66.8%	63.1%	65.6%	67.1%	68.7%
	Quintile 4	60.2%	70.4%	66.8%	68.9%	70.3%	72.4%
	Quintile 5	65.7%	73.6%	71.4%	73.3%	75.4%	76.6%
Percentage point difference between offer rate and average offer rate	Quintile 1	-3.3	-4.1	-2.8	-3.4	-1.6	0.2
	Quintile 2	-4.0	-2.6	-0.8	-1.5	-2.1	-0.3
	Quintile 3	-2.1	-1.0	-1.1	-0.1	-1.8	-1.1
	Quintile 4	-0.4	-0.6	-0.8	-0.9	-0.4	-0.7
	Quintile 5	1.7	1.3	1.0	1.0	1.2	0.7
Contribution of group to the average offer rate	Quintile 1	0.127	0.118	0.124	0.124	0.123	0.120
	Quintile 2	0.148	0.144	0.143	0.148	0.146	0.147
	Quintile 3	0.182	0.178	0.186	0.182	0.187	0.177
	Quintile 4	0.245	0.238	0.240	0.237	0.238	0.233
	Quintile 5	0.559	0.558	0.558	0.556	0.546	0.520

P.9 18 year old offer rate by POLAR4 quintile

Note: The line for a group is not plotted when that group made fewer than 10 applications in any of the years from 2013-2018.

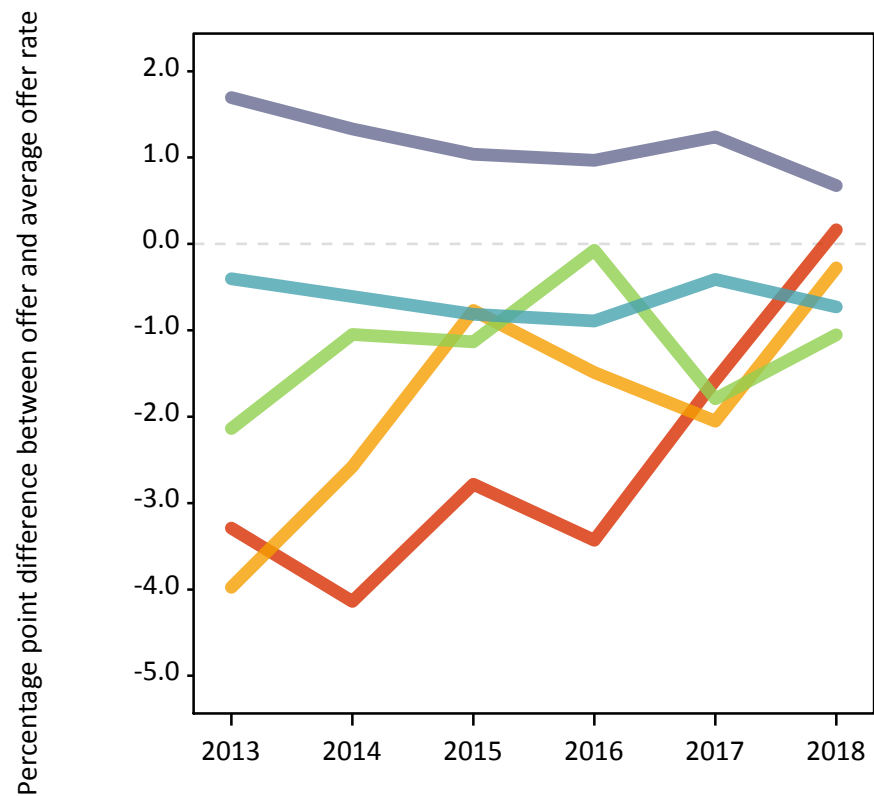
- Quintile 1
- Quintile 2
- Quintile 3
- Quintile 4
- Quintile 5



P.10 Percentage point difference between 18 year old offer rate and average offer rate by POLAR4 quintile

Note: The line for a group is not plotted when that group made fewer than 50 applications in any of the years from 2013-2018.

- Quintile 1
- Quintile 2
- Quintile 3
- Quintile 4
- Quintile 5



P.11 18 year old applicants by ethnic group

Statistic	Ethnic group	2013	2014	2015	2016	2017	2018
June deadline applicants	Asian	1,780	1,890	2,250	2,205	2,360	3,150
	Black	480	560	675	730	785	1,005
	Mixed	950	1,070	1,215	1,285	1,405	1,590
	White	17,025	17,455	19,015	19,135	18,970	20,925
	Other	175	240	275	295	310	420
Placed June deadline applicants	Asian	160	165	175	200	210	225
	Black	15	40	45	55	65	65
	Mixed	120	160	165	175	175	200
	White	2,530	2,615	2,755	2,800	2,805	2,865
	Other	15	30	30	35	30	30
All placed applicants	Asian	175	180	185	205	230	235
	Black	15	45	50	60	75	75
	Mixed	125	165	170	180	190	210
	White	2,580	2,710	2,825	2,855	2,980	2,960
	Other	15	35	30	35	35	30
June deadline applicants per 10,000 population	Asian	269.9	278.5	317.6	306.7	320.9	424.7
	Black	161.7	185.1	211.4	232.9	249.5	322.6
	Mixed	351.4	371.9	393.7	408.7	438.0	493.1
	White	270.5	282.9	305.2	316.3	319.7	364.4
	Other	194.1	257.9	283.2	295.4	300.0	399.5
Placed June deadline applicants per 10,000 population	Asian	24.0	24.6	24.4	27.5	28.7	30.2
	Black	5.4	13.2	13.8	17.6	21.3	20.2
	Mixed	44.4	55.6	54.2	55.6	54.5	62.3
	White	40.2	42.4	44.2	46.3	47.3	49.9
	Other	15.4	34.4	29.0	33.2	31.1	28.5
All placed applicants per 10,000 population	Asian	26.2	26.4	26.0	28.8	31.5	32.0
	Black	5.7	14.8	15.7	19.2	23.5	24.4
	Mixed	45.9	57.0	55.8	56.6	59.2	65.4
	White	41.0	43.9	45.4	47.2	50.2	51.6
	Other	17.6	36.5	31.1	35.2	34.9	29.5

P.12 18 year old applications by ethnic group

Statistic	Ethnic group	2013	2014	2015	2016	2017	2018
June deadline applications	Asian	1,800	1,905	2,270	2,235	2,415	3,225
	Black	485	570	680	740	800	1,025
	Mixed	960	1,085	1,225	1,305	1,435	1,630
	White	17,320	17,730	19,440	19,565	19,450	21,525
	Other	175	240	280	295	310	430
Offers	Asian	930	1,190	1,220	1,315	1,480	1,935
	Black	210	315	320	370	425	610
	Mixed	625	780	805	925	1,015	1,245
	White	10,960	12,780	13,555	13,985	14,305	16,175
	Other	85	145	155	160	185	240
Offer rate	Asian	51.6%	62.4%	53.8%	58.8%	61.2%	60.1%
	Black	43.5%	55.1%	47.3%	49.6%	53.1%	59.3%
	Mixed	65.0%	71.6%	65.8%	70.8%	70.9%	76.3%
	White	63.3%	72.1%	69.7%	71.5%	73.5%	75.1%
	Other	46.9%	59.9%	55.4%	53.4%	59.6%	55.9%
Average offer rate	Asian	52.0%	63.1%	55.7%	59.8%	62.2%	61.6%
	Black	44.4%	58.4%	50.7%	55.0%	55.7%	59.6%
	Mixed	63.2%	72.4%	66.0%	70.4%	72.1%	74.9%
	White	63.3%	71.9%	69.4%	71.2%	73.2%	75.0%
	Other	46.9%	59.4%	56.8%	56.1%	59.3%	58.9%
Percentage point difference between offer rate and average offer rate	Asian	-0.4	-0.6	-1.9	-1.0	-1.0	-1.5
	Black	-0.9	-3.3	-3.4	-5.4	-2.5	-0.3
	Mixed	1.8	-0.8	-0.2	0.4	-1.3	1.5
	White	-0.1	0.2	0.4	0.3	0.3	0.2
	Other	-0.0	0.5	-1.4	-2.7	0.3	-3.0
Contribution of group to the average offer rate	Asian	0.205	0.185	0.189	0.185	0.189	0.212
	Black	0.112	0.109	0.094	0.097	0.110	0.088
	Mixed	0.087	0.086	0.086	0.087	0.097	0.085
	White	0.850	0.838	0.826	0.824	0.812	0.790
	Other	0.049	0.052	0.055	0.053	0.070	0.044

P.13 18 year old offer rate by ethnic group

Note: The line for a group is not plotted when that group made fewer than 10 applications in any of the years from 2013-2018.

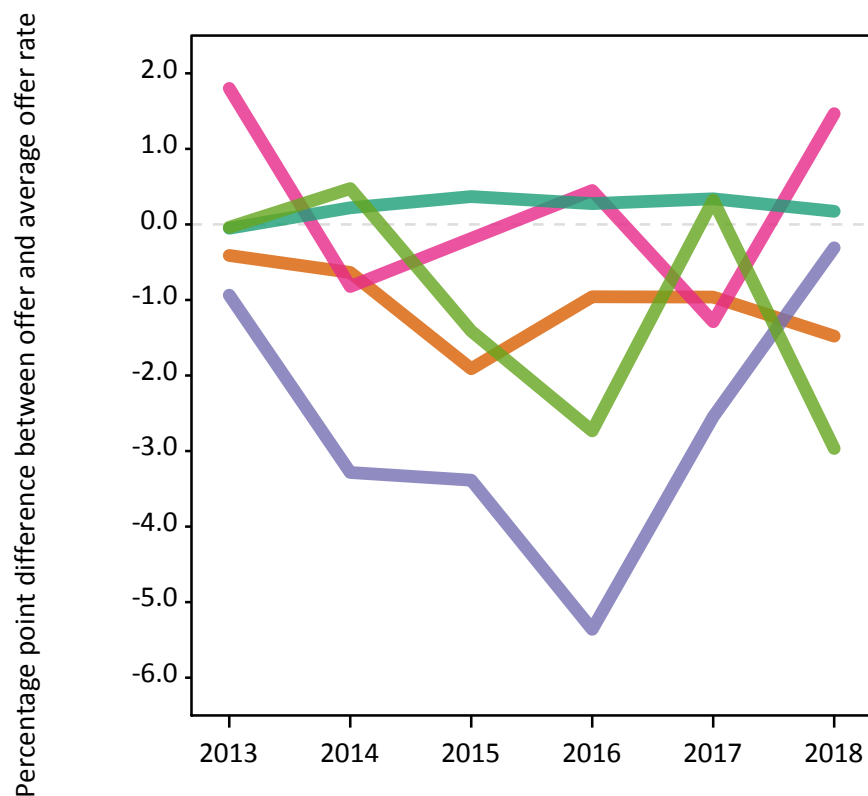
- Asian
- Black
- Mixed
- White
- Other



P.14 Percentage point difference between 18 year old offer rate and average offer rate by ethnic group

Note: The line for a group is not plotted when that group made fewer than 50 applications in any of the years from 2013-2018.

- Asian
- Black
- Mixed
- White
- Other



P.15 Applicants (all ages)

Statistic	2013	2014	2015	2016	2017	2018
June deadline applicants	28,135	28,820	31,405	31,645	31,730	35,955
Placed June deadline applicants	3,845	4,140	4,195	4,345	4,410	4,715
All placed applicants	3,940	4,300	4,330	4,465	4,700	4,910

P.16 Applications (all ages)

Statistic	2013	2014	2015	2016	2017	2018
June deadline applications	28,790	29,490	32,215	32,565	32,725	37,190
Offers	15,980	18,940	19,870	20,855	21,775	25,425
Offer rate	55.5%	64.2%	61.7%	64.0%	66.5%	68.4%

P.17 Applicants (all ages) by sex

Statistic	Sex	2013	2014	2015	2016	2017	2018
June deadline applicants	Men	13,655	14,155	14,790	14,665	14,995	16,940
	Women	14,485	14,665	16,620	16,980	16,735	19,010
Placed June deadline applicants	Men	1,840	2,025	1,935	1,935	2,015	2,120
	Women	2,005	2,115	2,260	2,410	2,395	2,600
All placed applicants	Men	1,880	2,090	2,000	1,985	2,135	2,190
	Women	2,060	2,210	2,330	2,480	2,570	2,715

P.18 Applications (all ages) by sex

Statistic	Sex	2013	2014	2015	2016	2017	2018
June deadline applications	Men	13,960	14,470	15,145	15,040	15,420	17,485
	Women	14,830	15,020	17,065	17,520	17,305	19,705
Offers	Men	7,775	9,485	9,400	9,735	10,225	11,725
	Women	8,205	9,455	10,470	11,120	11,550	13,705
Offer rate	Men	55.7%	65.5%	62.1%	64.7%	66.3%	67.0%
	Women	55.3%	62.9%	61.4%	63.5%	66.7%	69.5%

P.19 Applicants (all ages) by POLAR4 quintile

Statistic	POLAR4 quintile	2013	2014	2015	2016	2017	2018
June deadline applicants	Quintile 1	1,490	1,615	1,815	1,860	2,025	2,540
	Quintile 2	2,660	2,650	2,825	2,935	3,120	3,800
	Quintile 3	3,975	4,075	4,465	4,430	4,575	5,255
	Quintile 4	5,950	6,005	6,605	6,635	6,490	7,490
	Quintile 5	13,995	14,400	15,620	15,700	15,440	16,755
Placed June deadline applicants	Quintile 1	120	165	175	180	220	275
	Quintile 2	255	280	255	300	390	460
	Quintile 3	480	480	520	550	525	610
	Quintile 4	750	815	875	885	810	905
	Quintile 5	2,230	2,390	2,360	2,415	2,460	2,455
All placed applicants	Quintile 1	125	170	180	185	230	290
	Quintile 2	260	300	265	310	415	470
	Quintile 3	495	495	535	565	560	630
	Quintile 4	765	835	900	905	875	945
	Quintile 5	2,285	2,480	2,440	2,485	2,615	2,560

P.20 Applications (all ages) by POLAR4 quintile

Statistic	POLAR4 quintile	2013	2014	2015	2016	2017	2018
June deadline applications	Quintile 1	1,550	1,675	1,895	1,935	2,130	2,665
	Quintile 2	2,735	2,745	2,920	3,040	3,245	3,965
	Quintile 3	4,080	4,180	4,595	4,555	4,725	5,470
	Quintile 4	6,100	6,125	6,755	6,830	6,675	7,695
	Quintile 5	14,250	14,685	15,970	16,115	15,870	17,285
Offers	Quintile 1	590	780	855	900	1,090	1,525
	Quintile 2	1,220	1,485	1,460	1,610	1,825	2,435
	Quintile 3	1,985	2,430	2,550	2,735	2,810	3,475
	Quintile 4	3,235	3,870	4,090	4,275	4,375	5,155
	Quintile 5	8,915	10,325	10,880	11,290	11,625	12,770
Offer rate	Quintile 1	38.1%	46.5%	45.1%	46.6%	51.2%	57.1%
	Quintile 2	44.6%	54.1%	50.0%	52.9%	56.3%	61.4%
	Quintile 3	48.6%	58.1%	55.4%	60.1%	59.5%	63.5%
	Quintile 4	53.1%	63.2%	60.5%	62.6%	65.6%	67.0%
	Quintile 5	62.6%	70.3%	68.1%	70.0%	73.3%	73.9%

P.21 Applicants (all ages) by ethnic group

Statistic	Ethnic group	2013	2014	2015	2016	2017	2018
June deadline applicants	Asian	2,610	2,685	3,120	3,045	3,235	4,330
	Black	890	920	1,115	1,125	1,195	1,455
	Mixed	1,300	1,440	1,655	1,745	1,855	2,165
	White	22,730	23,120	24,740	24,915	24,570	26,900
	Other	310	385	435	460	510	665
Placed June deadline applicants	Asian	205	235	235	265	295	320
	Black	40	50	70	80	95	90
	Mixed	175	220	225	225	245	285
	White	3,360	3,565	3,590	3,670	3,675	3,915
	Other	25	45	40	50	55	50
All placed applicants	Asian	225	255	255	275	320	335
	Black	40	60	75	85	105	105
	Mixed	185	225	230	235	265	295
	White	3,425	3,685	3,685	3,755	3,905	4,055
	Other	30	45	40	55	60	50

P.22 Applications (all ages) by ethnic group

Statistic	Ethnic group	2013	2014	2015	2016	2017	2018
June deadline applications	Asian	2,645	2,715	3,170	3,100	3,315	4,430
	Black	905	940	1,135	1,160	1,220	1,490
	Mixed	1,330	1,475	1,675	1,785	1,905	2,240
	White	23,290	23,690	25,435	25,685	25,385	27,905
	Other	320	385	445	470	525	680
Offers	Asian	1,160	1,465	1,560	1,665	1,915	2,470
	Black	290	400	450	500	555	765
	Mixed	770	965	1,005	1,145	1,285	1,595
	White	13,475	15,740	16,425	17,080	17,510	19,965
	Other	120	200	210	230	270	340
Offer rate	Asian	43.9%	54.0%	49.2%	53.7%	57.8%	55.8%
	Black	32.3%	42.7%	39.7%	42.9%	45.4%	51.5%
	Mixed	58.0%	65.6%	59.9%	64.1%	67.4%	71.2%
	White	57.9%	66.4%	64.6%	66.5%	69.0%	71.6%
	Other	37.1%	51.9%	47.3%	48.5%	51.2%	50.1%

Technical Notes and Definitions

UCAS undergraduate scheme

Adjustment

Adjustment allows applicants who have met and exceeded the terms of their conditional firm offer to seek and find a place at another provider whilst keeping their place at their original firm choice provider.

Clearing

Clearing is a route for applicants that are not placed and holding no offers to find a place on courses with vacancies.

Cycle year

The UCAS application cycle which runs from September to October the following year. For example the 2018 cycle runs from September 2017 through to October 2018.

End of cycle

The point in the cycle to which the numbers in this report refer, and the point at which the cycle is closed such that no more applications or offers can be made, and no more applicants can be placed. Numbers reported at the end of cycle exclude information on a small number of applicants who cancelled during the cycle.

Extra

Applicants who are unsuccessful in obtaining an offer or decline all offers may be eligible to apply through Extra, where they can apply to one further course at a time. Extra operates from 25 February until early July. It provides applicants who are eligible the possibility of obtaining an offer before exam results are published and Clearing starts.

June 30 deadline

The deadline for main scheme applications. Applicants who apply after this date will go directly into Clearing.

Record of Prior Acceptance (RPA)

RPA is an acceptance route used when a provider informs UCAS of applicants it has accepted outside of the normal application process (e.g. individuals who have applied directly to the provider).

Reporting groups

Ethnic group

High level grouping of ethnic origin as declared by the applicant: 'White', 'Black', 'Asian', 'Mixed', 'Other', 'Unknown'. Applicants who declare themselves as 'Unknown' ethnic origin are not reported in these tables, but are included in the associated csv data file.

POLAR4 quintile

Developed by OfS, POLAR4 classifies small areas across the UK into five groups according to their level of young participation in Higher Education. Each of these groups represents around 20 per cent of young people and is ranked from Quintile 1 (areas with the lowest young participation rates, considered as the most disadvantaged) to Quintile 5 (highest young participation rates, considered most advantaged). POLAR4 is based on the participation rates of young people between 2009-10 and 2013-14 if they entered higher education aged 18, or between 2010-11 and 2014-15 if they entered aged 19, therefore is most suitable for applicants aged 19 and under. These groups are assigned using the postcode declared by the applicant at the time of their application. If a UK postcode is invalid, considered unsafe for measurement or there is no link to Census geography possible then the applicant is not assigned to a quintile. Applicants with no POLAR4 quintile are not reported.

Sex

Sex as declared by the applicant.

SIMD 2016 quintile

Scottish index of multiple deprivation (SIMD) identifies small area concentrations of multiple deprivation across all of Scotland, providing a relative measure of deprivation amongst 6505 small areas (data zones) based on 7 socio-economic domains. These small areas are classified into five groups ranked from Quintile 1 (considered the most deprived) to Quintile 5 (considered least deprived), with equal populations in each quintile. Quintiles are assigned using the postcode declared by the applicant, applicants declaring invalid postcodes are classified as 'Not assigned' and are not reported.

SIMD is only defined for applicants domiciled in Scotland, therefore any applicants domiciled outside of Scotland cannot be assigned to an SIMD quintile and so are not reported for this measure.

SIMD is only reported for providers in Scotland. Application and entry rates by SIMD are reported in the 2018 End of Cycle Report and the 2018 cycle January deadline application rate report.

Statistics reported in the tables

All placed applicants

The number of applicants placed for entry into higher education at the provider through one of their choices, including any choices made through Extra, or via Adjustment, Clearing or RPA.

All placed applicants per 10,000 population

The number of total UK domiciled 18 year old placed applicants for entry into higher education at the provider divided by the number of UK 18 year olds in the population, multiplied by 10,000. This gives the number of 18 year olds, for every 10,000 in the population, that were placed at the provider through one of their choices, including any choices made through Extra, or via Adjustment, Clearing or RPA. It is an alternative way of expressing the entry rate to a provider. By referencing the underlying population this statistic shows how the number of placed applicants is changing in relation to the available pool of potential applicants and so gives the chance that somebody from the group will be placed at a provider.

This statistic is only reported for 18 year olds.

Average offer rate

The offer rate that you might expect if the predicted grades and subject choice of applicants were the only factors that influenced whether an applicant was made an offer by the provider. The average offer rate is calculated by dividing applicants according to their specific combination of grades (for A levels the best three predicted grades are used, for BTECs, International Baccalaureate and Scottish Highers and Advanced Highers, predicted grades along with any grades already achieved upon applying are used) and subject choice. For each combination the number of main scheme offers is divided by the number of main scheme applications, to give an overall offer rate. This is then multiplied by the number of applications made by the group for which the average offer rate is being calculated (for example POLAR4 quintile 1), to give an average number of offers for that group. These average number of offers are then added together across all combinations of predicted grade and subject and divided by the number of main scheme applications from the group to give the average offer rate.

The average offer rate does not attempt to control for any other factors that may play a part in the decision to make an offer, such as the subject of the qualifications studied, their relevance to a course, or the grade in each subject; higher numbers of A levels being studied; the exact profile of grades predicted; personal statements; teacher references; interviews; or any other criteria (such as work experience or portfolios) that may be part of the admissions decision.

This statistic is only reported for 18 year olds.

Contribution of group to the average offer rate

The way in which the average offer rate is defined means that the pattern of application and offers of a group (for example POLAR4 quintile 1) will always contribute, in part, to the average offer rate for that group. When this contribution is large, the average offer rate will mainly reflect the patterns for the group, meaning that the value of the average offer rate will be similar to the offer rate, the percentage point difference statistic will be small, and any real difference between the offer rate and what might be expected given the predicted grades and subject choices of the applicants will be difficult to detect.

Values of the contribution of group to the average offer rate range between 0 and 1. The closer the value is to 1 the greater the contribution a group makes to its own average offer rate.

This statistic is only reported for 18 year olds.

Placed June deadline applicants

An applicant who has been placed for entry into higher education at the provider through a June deadline application.

Placed June deadline applicants per 10,000 population

The number of UK domiciled 18 year old placed June deadline applicants at the provider divided by the number of UK 18 year olds in the population, multiplied by 10,000. This gives the number of 18 year olds, for every 10,000 in the population, that were placed at the provider through one of their June deadline applications. It is an alternative way of expressing the entry rate to a provider, but for placed June deadline applicants only. By referencing the underlying population this statistic shows how the number of placed June deadline applicants is changing in relation to the available pool of potential 18 year old applicants and so gives the chance that somebody from the group will be placed at a provider through a June deadline application.

This statistic is only reported for 18 year olds.

June deadline applications

An application (or choice) to a course in higher education to the provider that is made by the June 30 deadline. Each applicant can make up to five choices this way. The number of June deadline applications does not include choices made through the following routes: Clearing, Extra, Adjustment and RPAs. Applications made to October deadline courses received after the October deadline are not included in these statistics.

June deadline applicants

The number of applicants that made at least one application to the provider by the June 30 deadline.

June deadline applicants per 10,000 population

The number of UK domiciled 18 year old June deadline applicants to the provider divided by the number of UK 18 year olds in the population, multiplied by 10,000. This gives the number of 18 year olds, for every 10,000 in the population, who applied by the June 30 deadline. It is equivalent to the application rate. By referencing the underlying population this statistic shows how the number of June deadline applicants is changing in relation to the available pool of potential 18 year old applicants and so gives the chance that somebody from the group will apply to a provider by the June 30 deadline.

This statistic is only reported for 18 year olds.

Offers

An offer is defined as a provider's decision in response to an application to offer a place to an applicant, often subject to the applicant satisfying academic and/or other criteria, via a June deadline application (i.e. does not cover choices made through the following routes: Clearing, Extra, Adjustment and RPAs).

Offer rate

The number of offers made divided by the number of June deadline applications. This gives the proportion of all June deadline applications to the provider that received an offer.

Percentage point difference between offer rate and average offer rate

The offer rate minus the average offer rate.

The percentage point difference can be compared to the expected range of statistical variation resulting from the calculation of the average offer rate using the Average Offer Rate Lookup Table. Where the value of the percentage point difference lies outside of this range, the percentage point difference may be considered to represent a real difference between the offer rate and the average offer rate.

Other definitions

Age

This analysis uses country-specific age definitions that align with the cut off points for school and college cohorts within the different administrations of the UK. For England and Wales, ages are defined on the 31 August, for Northern Ireland on the 1 July and for Scotland on the 28 February the following year. Defining ages in this way matches the assignment of children to school cohorts. For applicants outside of the UK a cohort cut off of 31 August has been used. Numbers for applicants aged 17 and under are included in the tables that report numbers for all age groups. Providers in Scotland typically receive a higher proportion of applicants aged 17 and under compared to providers elsewhere in the UK.

Provider

A higher education provider - a university or college.

UK domiciled

Declared area of permanent residence within England, Northern Ireland, Scotland and Wales. Applicants from the Channel Islands and Isle of Man are not included.