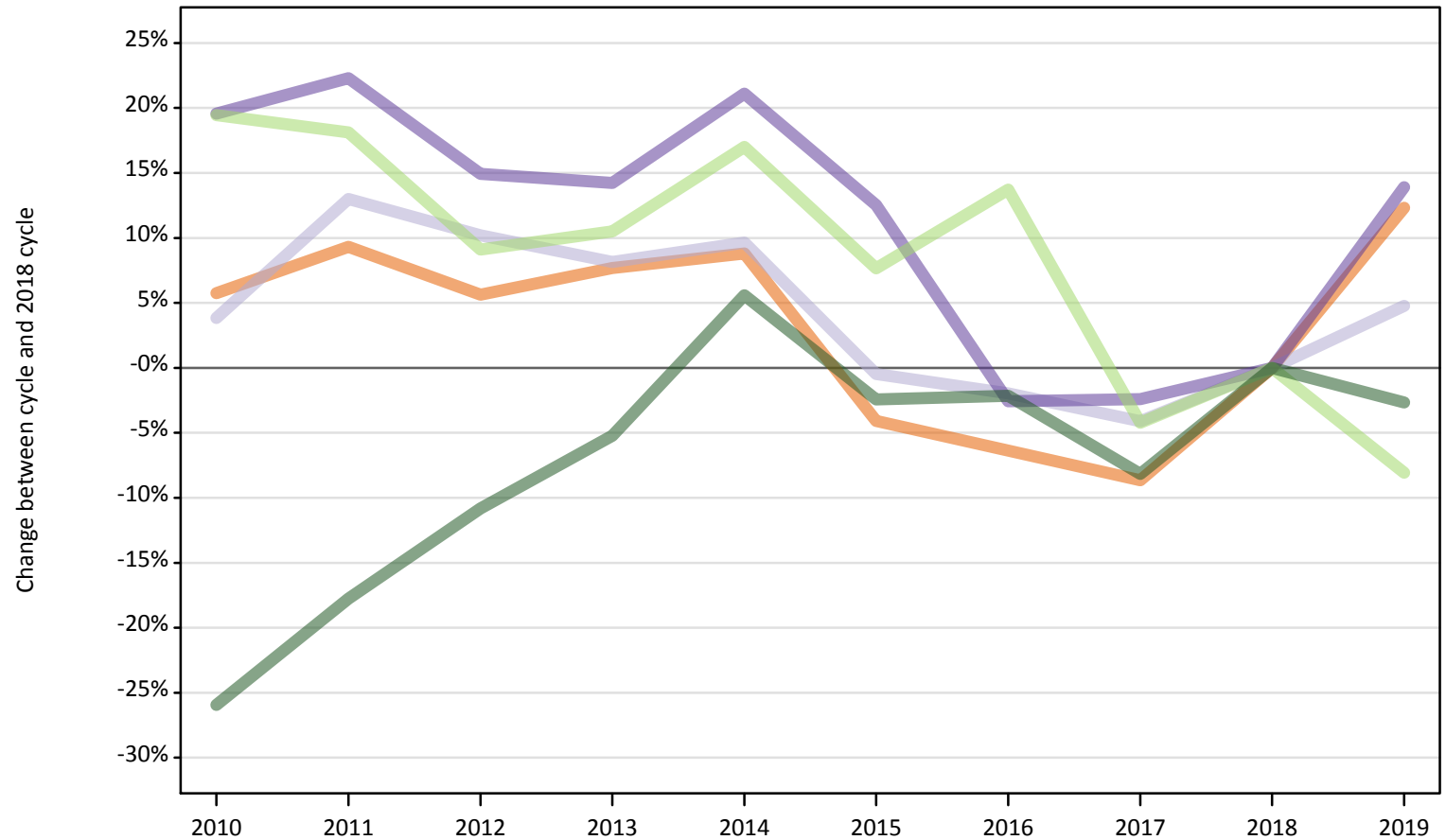


October Deadline Analysis: Overview

Applicants for medicine courses with 15 October deadline, at the 15 October deadline

AM.1 Applicants for medicine courses with 15 October deadline by domicile group Difference between cycle and 2018 cycle

- England
- Northern Ireland
- Scotland
- Wales
- EU (excluding UK)
- Not EU



Note: The percentage change is not plotted in the above chart for groups with fewer than 500 applicants in any one cycle.

AM.2 Applicants for medicine courses with 15 October deadline by domicile group

Domicile of applicant	2010	2011	2012	2013	2014	2015	2016	2017	2018	2019
England	14,260	14,740	14,240	14,520	14,670	12,930	12,620	12,320	13,480	15,140
Northern Ireland	730	740	640	660	590	570	580	540	490	540
Scotland	1,110	1,210	1,180	1,160	1,170	1,060	1,050	1,030	1,070	1,120
Wales	700	710	670	670	710	660	570	570	580	660
UK	16,790	17,400	16,730	17,000	17,140	15,220	14,820	14,450	15,620	17,470
EU (excluding UK)	2,150	2,130	1,960	1,990	2,110	1,940	2,050	1,720	1,800	1,660
Not EU	2,450	2,720	2,950	3,130	3,490	3,230	3,240	3,040	3,310	3,220
All domiciles	21,390	22,250	21,650	22,130	22,740	20,390	20,100	19,210	20,730	22,340

AM.3 Applicants for medicine courses with 15 October deadline by domicile group

Difference between cycle and 2018 cycle

Domicile of applicant	2010	2011	2012	2013	2014	2015	2016	2017	2018	2019
England	6%	9%	6%	8%	9%	-4%	-6%	-9%	0%	12%
Northern Ireland	50%	53%	33%	36%	22%	17%	19%	11%	0%	10%
Scotland	4%	13%	10%	8%	10%	-0%	-2%	-4%	0%	5%
Wales	20%	22%	15%	14%	21%	13%	-3%	-2%	0%	14%
UK	7%	11%	7%	9%	10%	-3%	-5%	-7%	0%	12%
EU (excluding UK)	19%	18%	9%	11%	17%	8%	14%	-4%	0%	-8%
Not EU	-26%	-18%	-11%	-5%	6%	-2%	-2%	-8%	0%	-3%
All domiciles	3%	7%	4%	7%	10%	-2%	-3%	-7%	0%	8%

Note: The percentage change is not recorded in the above table for groups with fewer than 10 applicants in that cycle or in the 2018 cycle.

AM.4 Applicants for medicine courses with 15 October deadline by country of domicile and provider, 2019 cycle

[This output is not part of this report]

AM.5 Applicants for medicine courses with 15 October deadline by domicile group, 2019 cycle

[This output is not part of this report]

AM.6 Applicants for medicine courses with 15 October deadline by country of provider, 2019 cycle

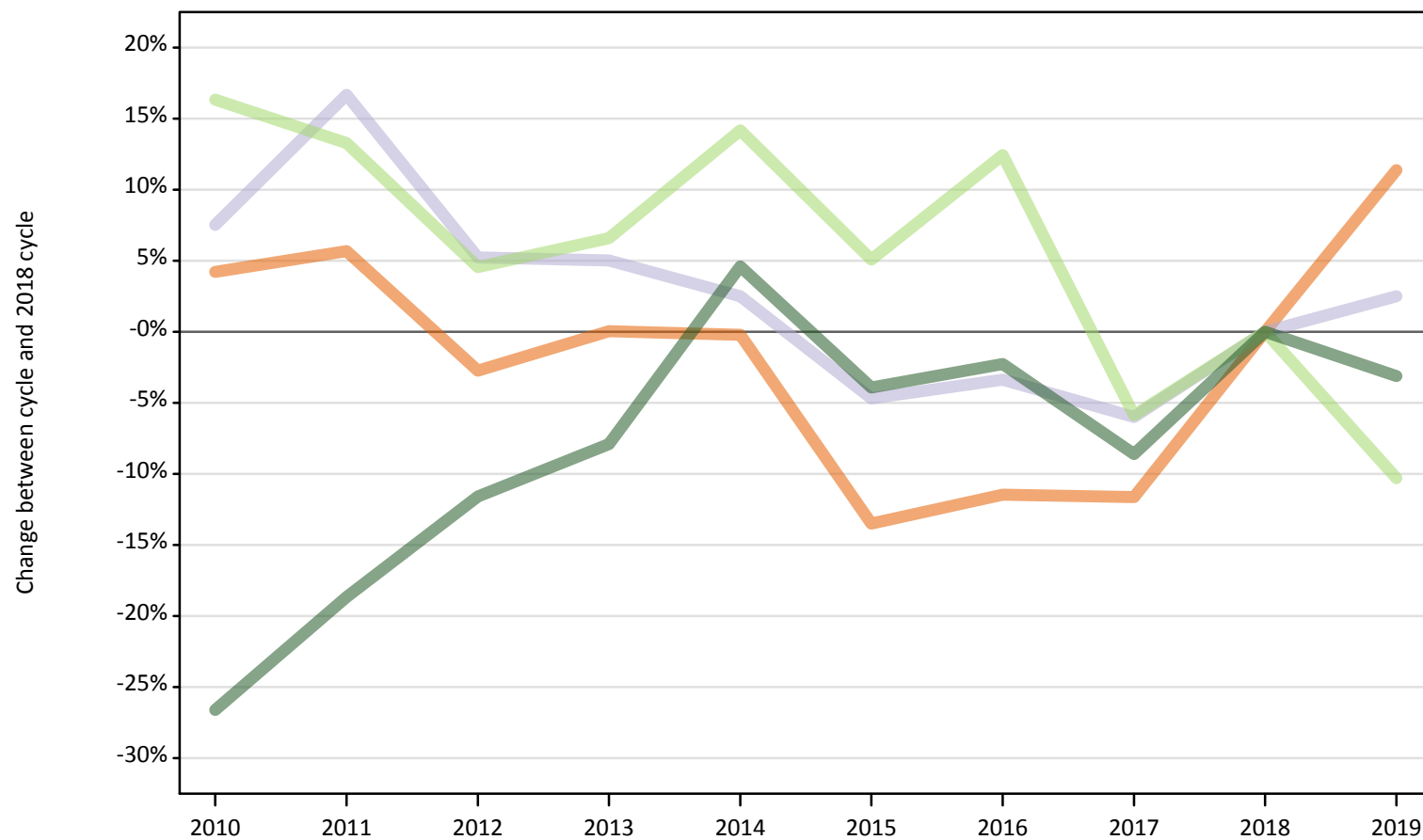
[This output is not part of this report]

AM.7 Applicants for medicine courses with 15 October deadline by country of domicile and provider

[This output is not part of this report]

AM.8 First-time applicants for medicine courses with 15 October deadline by domicile group
Difference between cycle and 2018 cycle

- England
- Northern Ireland
- Scotland
- Wales
- EU (excluding UK)
- Not EU



Note: The percentage change is not plotted in the above chart for groups with fewer than 500 applicants in any one cycle.

AM.9 First-time applicants for medicine courses with 15 October deadline by country of domicile

Domicile of applicant	2010	2011	2012	2013	2014	2015	2016	2017	2018	2019
England	12,140	12,310	11,330	11,650	11,620	10,070	10,310	10,290	11,640	12,970
Northern Ireland	650	640	530	560	490	480	500	460	420	490
Scotland	990	1,070	970	960	940	880	890	860	920	940
Wales	610	640	540	550	560	520	460	480	500	580
UK	14,390	14,650	13,360	13,720	13,610	11,950	12,150	12,090	13,490	14,980
EU (excluding UK)	1,950	1,890	1,750	1,780	1,910	1,760	1,880	1,570	1,670	1,500
Not EU	2,270	2,510	2,730	2,850	3,230	2,970	3,020	2,830	3,090	3,000
All domiciles	18,600	19,060	17,840	18,350	18,750	16,680	17,050	16,490	18,250	19,480

AM.10 First-time applicants for medicine courses with 15 October deadline by country of domicile

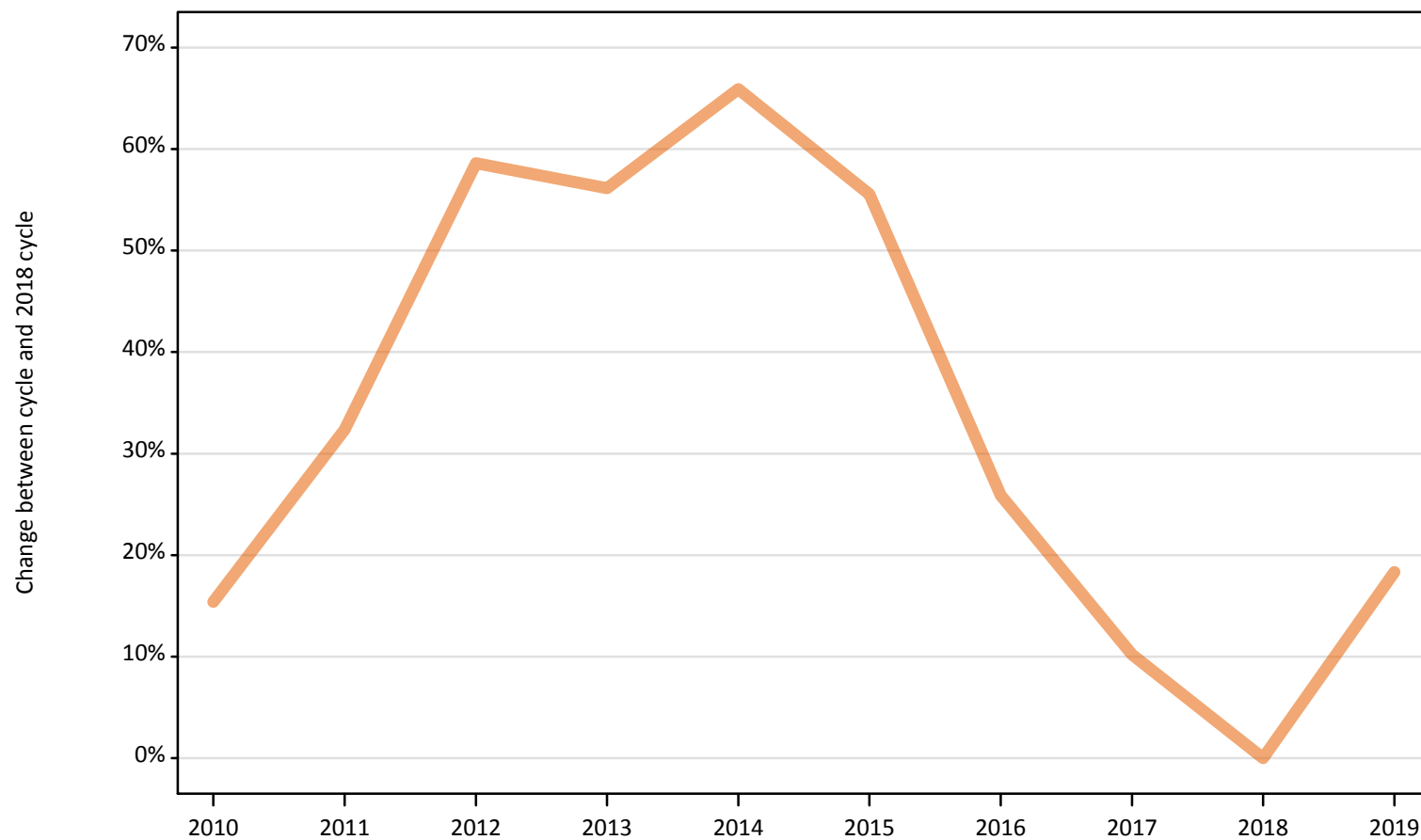
Difference between cycle and 2018 cycle

Domicile of applicant	2010	2011	2012	2013	2014	2015	2016	2017	2018	2019
England	4%	6%	-3%	0%	-0%	-13%	-11%	-12%	0%	11%
Northern Ireland	55%	51%	26%	32%	16%	13%	18%	10%	0%	17%
Scotland	8%	17%	5%	5%	3%	-5%	-3%	-6%	0%	3%
Wales	21%	27%	8%	9%	12%	4%	-10%	-6%	0%	15%
UK	7%	9%	-1%	2%	1%	-11%	-10%	-10%	0%	11%
EU (excluding UK)	16%	13%	5%	7%	14%	5%	12%	-6%	0%	-10%
Not EU	-27%	-19%	-12%	-8%	5%	-4%	-2%	-9%	0%	-3%
All domiciles	2%	4%	-2%	1%	3%	-9%	-7%	-10%	0%	7%

Note: The percentage change is not recorded in the above table for groups with fewer than 10 applicants in that cycle or in the 2018 cycle.

AM.11 Reapplicants for medicine courses with 15 October deadline by domicile group
Difference between cycle and 2018 cycle

- England
- Northern Ireland
- Scotland
- Wales
- EU (excluding UK)
- Not EU



Note: The percentage change is not plotted in the above chart for groups with fewer than 500 applicants in any one cycle.

AM.12 Reapplicants for medicine courses with 15 October deadline by country of domicile

Domicile of applicant	2010	2011	2012	2013	2014	2015	2016	2017	2018	2019
England	2,120	2,430	2,920	2,870	3,050	2,860	2,310	2,030	1,840	2,180
Northern Ireland	70	110	120	110	110	90	80	80	70	40
Scotland	120	140	210	190	230	190	160	160	150	180
Wales	90	80	130	120	140	130	110	90	80	90
UK	2,410	2,750	3,370	3,290	3,530	3,270	2,670	2,360	2,130	2,490
EU (excluding UK)	210	230	220	210	200	180	170	150	130	160
Not EU	180	210	220	290	260	260	220	210	220	220
All domiciles	2,790	3,190	3,800	3,780	3,990	3,710	3,050	2,720	2,480	2,860

AM.13 Reapplicants for medicine courses with 15 October deadline by country of domicile

Difference between cycle and 2018 cycle

Domicile of applicant	2010	2011	2012	2013	2014	2015	2016	2017	2018	2019
England	15%	32%	59%	56%	66%	56%	26%	10%	0%	18%
Northern Ireland	12%	66%	77%	65%	62%	43%	29%	23%	0%	-32%
Scotland	-19%	-9%	40%	27%	53%	25%	7%	7%	0%	19%
Wales	10%	-5%	60%	49%	80%	65%	41%	18%	0%	9%
UK	13%	29%	58%	54%	65%	53%	25%	11%	0%	16%
EU (excluding UK)	60%	81%	69%	62%	54%	41%	30%	17%	0%	21%
Not EU	-17%	-5%	0%	33%	20%	19%	-0%	-2%	0%	4%
All domiciles	13%	29%	53%	53%	61%	50%	23%	10%	0%	16%

Note: The percentage change is not recorded in the above table for groups with fewer than 10 applicants in that cycle or in the 2018 cycle.

AM.14 Applicants for medicine courses with 15 October deadline by country of domicile and age group

Selected age groups split by first-time applicants and reapplicants

Domicile of applicant		2010	2011	2012	2013	2014	2015	2016	2017	2018	2019
England	18	7,160	7,290	7,200	7,220	6,970	6,090	6,380	6,690	7,770	8,930
	19	1,660	1,820	1,650	1,790	1,800	1,490	1,290	1,270	1,170	1,520
	19 First-time applicant	670	710	390	500	510	410	440	490	490	590
	19 Reapplicant	990	1,100	1,270	1,290	1,290	1,080	850	780	690	930
Northern Ireland	18	530	490	440	450	400	370	390	360	330	380
	19	80	120	100	90	80	100	80	80	50	50
	19 First-time applicant	30	30	10	10	10	20	20	10	10	20
	19 Reapplicant	50	90	90	80	80	80	70	60	40	30
Scotland	18	640	690	630	640	590	560	580	570	570	580
	19	120	160	190	160	180	160	140	150	160	150
	19 First-time applicant	60	100	80	60	80	70	60	70	90	90
	19 Reapplicant	60	60	110	100	110	90	80	80	80	70
Wales	18	390	410	350	350	360	310	250	310	330	410
	19	80	60	90	70	90	80	50	40	40	50
	19 First-time applicant	40	30	20	20	30	20	10	20	20	20
	19 Reapplicant	40	40	70	50	60	60	40	20	20	30

AM.15 Applicants for medicine courses with 15 October deadline by country of domicile and age group
 Difference between cycle and 2018 cycle for selected age groups split by first-time applicants and reapplicants

Domicile of applicant		2010	2011	2012	2013	2014	2015	2016	2017	2018	2019
England	18	-8%	-6%	-7%	-7%	-10%	-22%	-18%	-14%	0%	15%
	19	41%	55%	41%	53%	54%	27%	10%	8%	0%	30%
	19 First-time applicant	38%	46%	-21%	3%	5%	-16%	-9%	-0%	0%	21%
	19 Reapplicant	44%	61%	85%	88%	88%	57%	24%	14%	0%	36%
Northern Ireland	18	59%	48%	32%	33%	20%	10%	15%	6%	0%	13%
	19	49%	132%	87%	77%	53%	85%	58%	47%	0%	-8%
	19 First-time applicant	180%	240%	-20%	10%	-50%	90%	70%	40%	0%	80%
	19 Reapplicant	19%	107%	112%	93%	77%	84%	56%	49%	0%	-28%
Scotland	18	11%	20%	9%	11%	3%	-2%	0%	-1%	0%	1%
	19	-28%	-3%	17%	-1%	12%	-3%	-12%	-10%	0%	-6%
	19 First-time applicant	-30%	13%	-14%	-32%	-14%	-18%	-32%	-20%	0%	-3%
	19 Reapplicant	-25%	-21%	52%	35%	41%	15%	12%	3%	0%	-9%
Wales	18	18%	25%	6%	7%	8%	-7%	-23%	-7%	0%	23%
	19	103%	55%	123%	65%	118%	88%	20%	3%	0%	20%
	19 First-time applicant	85%	35%	0%	-20%	25%	-5%	-45%	0%	0%	-20%
	19 Reapplicant	120%	75%	245%	150%	210%	180%	85%	5%	0%	60%

Note: The percentage change is not recorded in the above table for groups with fewer than 10 applicants in that cycle or in the 2018 cycle.

AM.16 Technical notes and definitions

Applicants have been able to submit applications for all 2019 courses since early September.

These additional tables relate to a subset of applicants who have applied to one or more of the medicine courses that have a 15th of October 'equal consideration' deadline.

Outputs AM.4, AM.5, AM.6 and AM.7 have not been produced to avoid disclosing figures for individual providers before the 2017 admissions cycle has closed.

15 October is the 'equal consideration' deadline for most Medicine/Dentistry/Veterinary courses and courses at the universities of Oxford and Cambridge.

This statistical release covers applicants that have applied for courses with a 15 October deadline and is a near complete measure of the demand for the courses covered by the deadline.

Counts of the number of applicants reported have been rounded to the nearest 10 applicants, this may result in instances where totals do not equal the sum of the components. Proportional changes have been rounded to the nearest whole percentage point.

Age

This statistical release uses country-specific age definitions which align with the cut off points for school/college cohorts within the different administrations of the UK. For England and Wales ages are defined on the 31 August, for Northern Ireland on the 1 July and for Scotland on the 28 February the following year. Defining ages in this way matches the assignment of children to school cohorts. For applicants outside of the UK the cohort cut off for England and Wales has been used.

Applicant

A person who has made an application in the UCAS system during the cycle reported (including applications for deferred entry). Records of prior acceptance (RPAs) are excluded.

Application

An application to a course at a provider made by an applicant in the UCAS main scheme. Applicants may make up to five main scheme applications.

Country of provider

An applicant may be counted once for each provider country they have applied to in the main scheme. If an applicant has applied to providers in multiple countries then the applicant is counted once within each country of provider applied to.

Domicile

Declared area of permanent residence. The Channel Islands and the Isle of Man have been assigned as 'Not EU'.

Ethnic group

High level grouping of ethnic origin as declared by the applicant: 'Asian', 'Black', 'Mixed', 'White', 'Other', 'Unknown'.

First time applicant

An applicant that did not apply to the UCAS scheme in the previous cycle.

Main scheme

The main UCAS application scheme through which up to five providers/courses can be applied to. This opens in September and closes to new applications on 30 June the following year.

Reapplicant

An applicant that applied to the UCAS scheme in the previous cycle.

Sex

As declared by the applicant.

SIMD 2016

Scottish Index of Multiple Deprivation identifies small area concentrations of multiple deprivation across all of Scotland, providing a relative measure of deprivation among small areas (data zones). In this report, the SIMD 2016 has been used to group areas in each year in the times series.

POLAR3

Developed by HEFCE and classifies small areas across the UK into five groups, according to their level of young participation in HE. Each of these groups represents around 20 per cent of young people, and is ranked from quintile 1 (areas with the lowest young participation rates, considered as the most disadvantaged) to quintile 5 (highest young participation rates, considered most advantaged).

POLAR4

Developed by HEFCE and classifies small areas across the UK into five groups, according to their level of young participation in HE. Each of these groups represents around 20 per cent of young people, and is ranked from quintile 1 (areas with the lowest young participation rates, considered as the most disadvantaged) to quintile 5 (highest young participation rates, considered most advantaged). POLAR4 is the most recent version of the POLAR classification, and is available for the first time in UCAS? reporting since its launch in 2017.

Tariff Group of provider

Providers are grouped as higher, medium or lower tariff based on their average levels of attainment of their accepted applicants (summarised through UCAS Tariff points) in recent cycles. Each group of providers accounted for around a third of all UK 18 year old acceptances in recent cycles.

Subject group

The JACS3 classification used to classify courses into subject groups.