

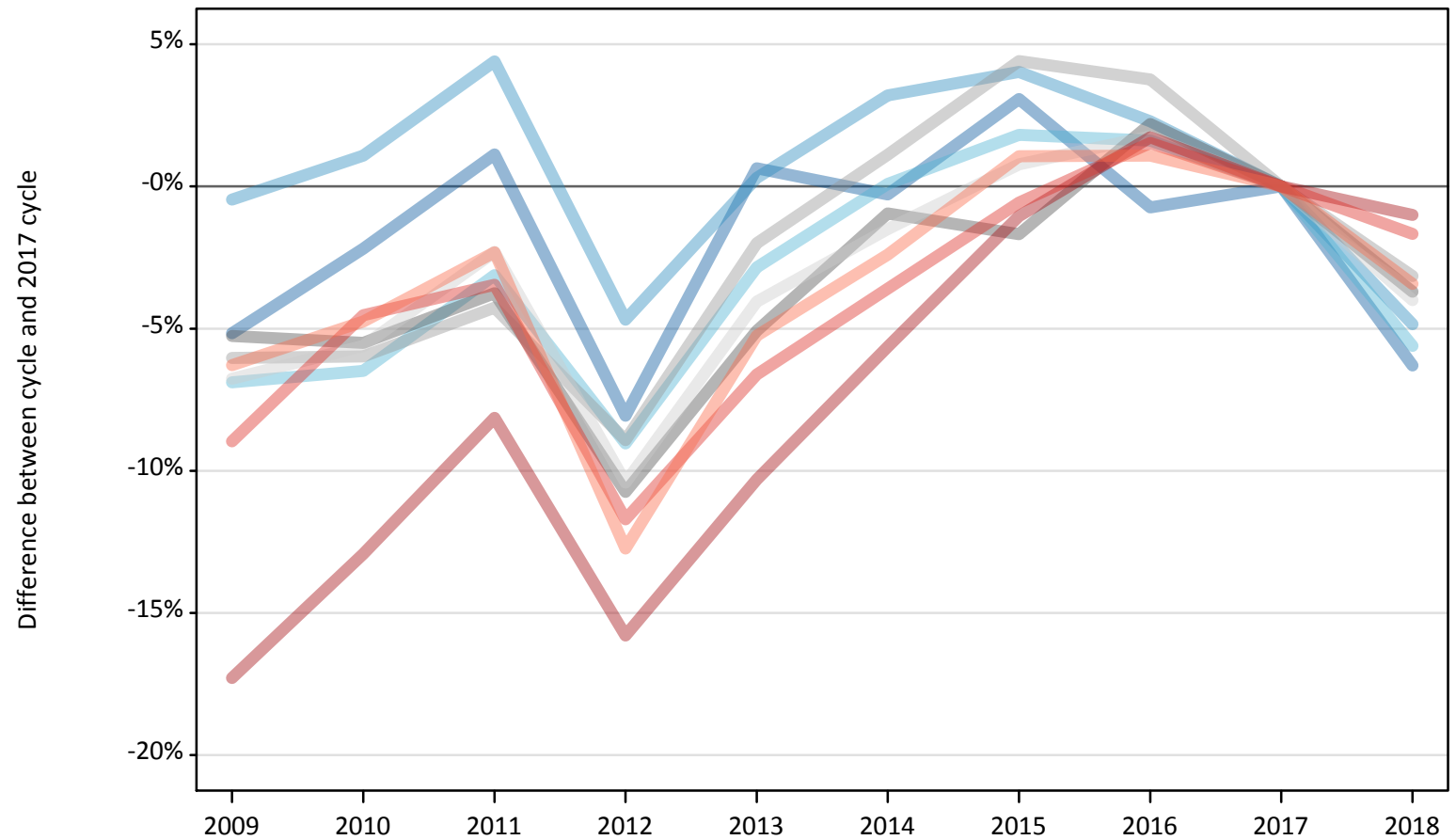
Daily Clearing Analysis: Region

Analysis at 00:05 on Thursday 13 September 2018 (28 days after A level results day)

R.1 Placed applicants by region of domicile: 28 days after A level results day

Placed applicants: change relative to 2017 cycle totals

- North East
- North West
- Yorkshire and The Humber
- East Midlands
- West Midlands
- East of England
- London
- South East
- South West



Note: The percentage change is not plotted in the above chart for groups with fewer than 30 placed applicants in any one cycle.

R.2 Placed applicants by region of domicile: 28 days after A level results day

Applicant Status	Domicile	2009	2010	2011	2012	2013	2014	2015	2016	2017	2018
Placed	North East	15,010	15,480	16,010	14,550	15,930	15,790	16,320	15,710	15,830	14,830
	North West	47,670	48,420	50,000	45,650	48,040	49,430	49,830	48,990	47,900	45,570
	Yorkshire and The Humber	31,560	31,690	32,840	30,830	32,930	33,920	34,510	34,440	33,890	31,990
	East Midlands	27,110	27,040	27,540	25,540	27,160	28,350	28,140	29,250	28,620	27,560
	West Midlands	36,100	36,120	36,780	34,990	37,650	38,840	40,110	39,860	38,410	37,200
	East of England	35,500	35,940	37,190	34,110	36,530	37,500	38,370	38,740	38,070	36,550
	London	60,900	64,110	67,630	62,000	66,040	69,470	72,860	74,900	73,630	72,890
	South East	54,720	57,390	58,040	53,080	56,140	57,960	59,780	61,030	60,120	59,110
	South West	32,040	32,560	33,390	29,830	32,390	33,370	34,550	34,550	34,190	33,010
	(England total)	340,610	348,750	359,420	330,580	352,810	364,620	374,440	377,480	370,650	358,730
	Scotland	27,680	29,270	28,600	28,770	29,200	29,900	32,660	33,760	34,580	35,080
	Northern Ireland	13,580	13,540	13,810	13,290	14,520	14,430	14,110	14,860	14,400	14,070
	Wales	18,900	17,790	17,690	18,270	18,400	19,180	19,560	19,830	19,350	18,850
	UK	400,780	409,350	419,520	390,910	414,920	428,120	440,770	445,940	438,980	426,730

R.3 Placed applicants by region of domicile: 28 days after A level results day

Placed applicants: change relative to 2017 cycle totals

Applicant Status	Domicile	2009	2010	2011	2012	2013	2014	2015	2016	2017	2018
Placed	North East	-5%	-2%	1%	-8%	1%	-0%	3%	-1%	0%	-6%
	North West	-0%	1%	4%	-5%	0%	3%	4%	2%	0%	-5%
	Yorkshire and The Humber	-7%	-6%	-3%	-9%	-3%	0%	2%	2%	0%	-6%
	East Midlands	-5%	-6%	-4%	-11%	-5%	-1%	-2%	2%	0%	-4%
	West Midlands	-6%	-6%	-4%	-9%	-2%	1%	4%	4%	0%	-3%
	East of England	-7%	-6%	-2%	-10%	-4%	-2%	1%	2%	0%	-4%
	London	-17%	-13%	-8%	-16%	-10%	-6%	-1%	2%	0%	-1%
	South East	-9%	-5%	-3%	-12%	-7%	-4%	-1%	2%	0%	-2%
	South West	-6%	-5%	-2%	-13%	-5%	-2%	1%	1%	0%	-3%
	(England total)	-8%	-6%	-3%	-11%	-5%	-2%	1%	2%	0%	-3%
	Scotland	-20%	-15%	-17%	-17%	-16%	-14%	-6%	-2%	0%	1%
	Northern Ireland	-6%	-6%	-4%	-8%	1%	0%	-2%	3%	0%	-2%
	Wales	-2%	-8%	-9%	-6%	-5%	-1%	1%	2%	0%	-3%
	UK	-9%	-7%	-4%	-11%	-5%	-2%	0%	2%	0%	-3%

Note: The percentage change is not recorded in the above table for groups with fewer than 10 placed applicants in that cycle or in the 2017 cycle.

R.4 Placed applicants by region of domicile: 28 days after A level results day

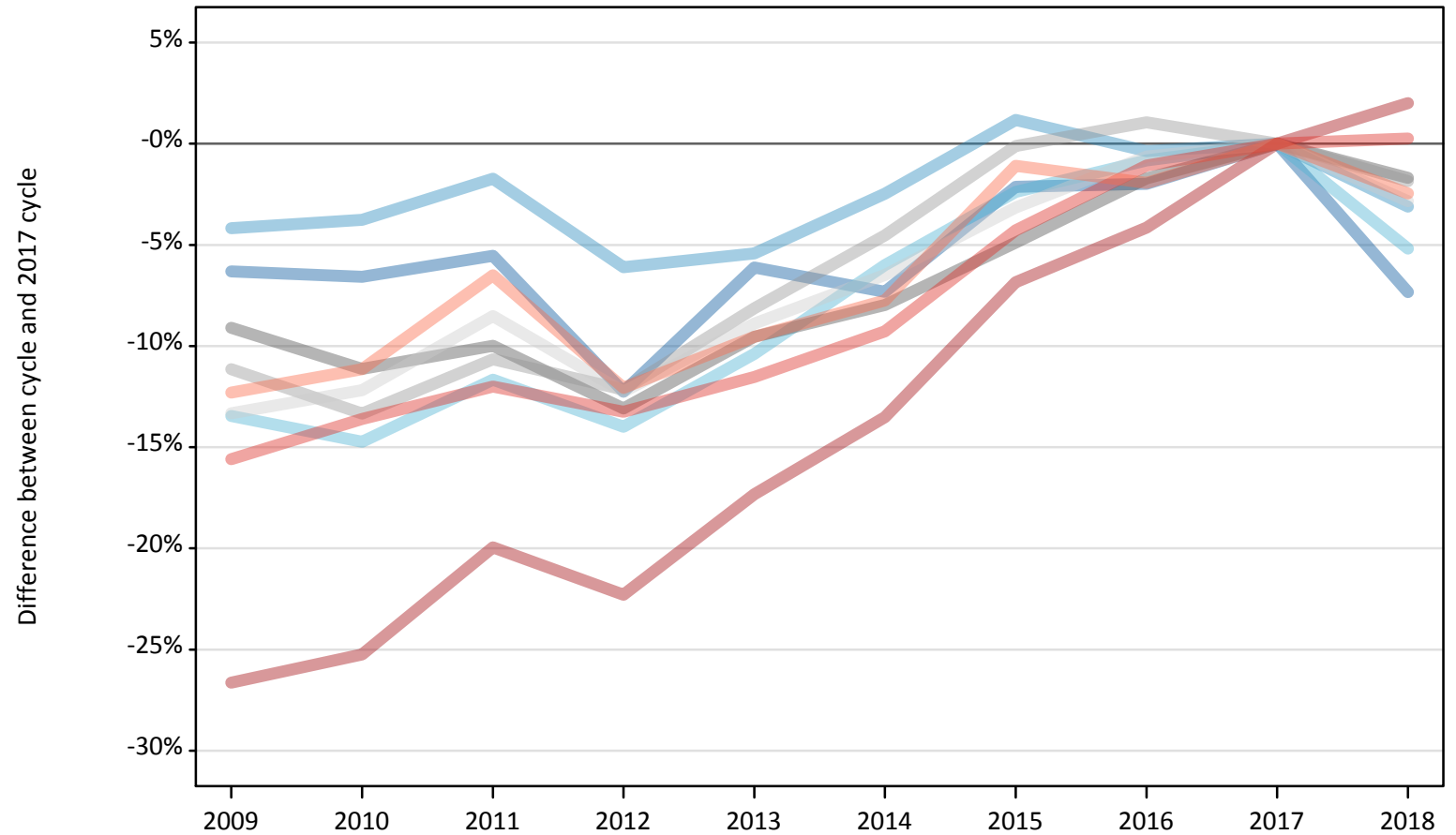
Placed applicants: absolute change relative to 2017 cycle totals

Applicant Status	Domicile	2009	2010	2011	2012	2013	2014	2015	2016	2017	2018
Placed	North East	-820	-350	180	-1,280	100	-40	490	-120	0	-1,000
	North West	-220	520	2,110	-2,240	140	1,540	1,930	1,100	0	-2,320
	Yorkshire and The Humber	-2,340	-2,200	-1,060	-3,060	-960	30	620	550	0	-1,900
	East Midlands	-1,500	-1,570	-1,080	-3,070	-1,450	-270	-480	630	0	-1,060
	West Midlands	-2,320	-2,300	-1,640	-3,430	-770	430	1,690	1,450	0	-1,210
	East of England	-2,580	-2,140	-880	-3,970	-1,540	-570	300	670	0	-1,520
	London	-12,730	-9,520	-5,990	-11,630	-7,590	-4,150	-770	1,270	0	-740
	South East	-5,390	-2,720	-2,080	-7,040	-3,970	-2,160	-340	920	0	-1,000
	South West	-2,150	-1,620	-790	-4,360	-1,800	-820	360	370	0	-1,170
	(England total)	-30,040	-21,900	-11,230	-40,070	-17,850	-6,030	3,790	6,830	0	-11,930
	Scotland	-6,900	-5,310	-5,980	-5,810	-5,390	-4,690	-1,930	-820	0	500
	Northern Ireland	-820	-860	-590	-1,110	120	30	-290	470	0	-330
	Wales	-450	-1,560	-1,660	-1,080	-950	-180	210	480	0	-510
	UK	-38,210	-29,630	-19,460	-48,070	-24,060	-10,860	1,790	6,960	0	-12,260

R.5 Placed 18 year old applicants by region of domicile: 28 days after A level results day

Placed 18 year old applicants: change relative to 2017 cycle totals

- North East
- North West
- Yorkshire and The Humber
- East Midlands
- West Midlands
- East of England
- London
- South East
- South West



Note: The percentage change is not plotted in the above chart for groups with fewer than 30 placed applicants in any one cycle.

R.6 Placed 18 year old applicants by region of domicile: 28 days after A level results day

Applicant Status	Domicile	2009	2010	2011	2012	2013	2014	2015	2016	2017	2018
Placed	North East	8,180	8,150	8,240	7,660	8,190	8,090	8,540	8,550	8,730	8,090
	North West	25,990	26,100	26,650	25,460	25,650	26,450	27,440	27,020	27,120	26,280
	Yorkshire and The Humber	16,810	16,560	17,160	16,710	17,410	18,260	18,970	19,270	19,430	18,420
	East Midlands	14,930	14,600	14,780	14,280	14,860	15,120	15,620	16,140	16,420	16,150
	West Midlands	19,020	18,550	19,120	18,800	19,660	20,430	21,380	21,630	21,400	21,010
	East of England	19,980	20,240	21,090	20,230	21,000	21,560	22,330	22,910	23,050	22,400
	London	28,140	28,680	30,710	29,810	31,710	33,170	35,740	36,770	38,360	39,130
	South East	29,950	30,660	31,230	30,780	31,400	32,200	33,970	35,110	35,490	35,580
	South West	15,550	15,750	16,570	15,590	16,030	16,350	17,530	17,380	17,730	17,290
	(England total)	178,550	179,290	185,560	179,320	185,910	191,630	201,510	204,780	207,720	204,330
	Scotland	14,620	14,890	14,060	14,170	14,200	14,310	14,410	14,590	14,610	14,580
	Northern Ireland	9,320	8,800	8,640	8,470	8,820	8,520	8,420	8,580	8,410	8,210
	Wales	10,460	9,890	9,500	9,800	9,720	10,100	10,560	10,700	10,350	10,140
	UK	212,940	212,870	217,760	211,760	218,650	224,560	234,900	238,650	241,090	237,270

R.7 Placed 18 year old applicants by region of domicile: 28 days after A level results day

Placed 18 year old applicants: change relative to 2017 cycle totals

Applicant Status	Domicile	2009	2010	2011	2012	2013	2014	2015	2016	2017	2018
Placed	North East	-6%	-7%	-6%	-12%	-6%	-7%	-2%	-2%	0%	-7%
	North West	-4%	-4%	-2%	-6%	-5%	-2%	1%	-0%	0%	-3%
	Yorkshire and The Humber	-13%	-15%	-12%	-14%	-10%	-6%	-2%	-1%	0%	-5%
	East Midlands	-9%	-11%	-10%	-13%	-10%	-8%	-5%	-2%	0%	-2%
	West Midlands	-11%	-13%	-11%	-12%	-8%	-5%	-0%	1%	0%	-2%
	East of England	-13%	-12%	-9%	-12%	-9%	-6%	-3%	-1%	0%	-3%
	London	-27%	-25%	-20%	-22%	-17%	-14%	-7%	-4%	0%	2%
	South East	-16%	-14%	-12%	-13%	-12%	-9%	-4%	-1%	0%	0%
	South West	-12%	-11%	-6%	-12%	-10%	-8%	-1%	-2%	0%	-2%
	(England total)	-14%	-14%	-11%	-14%	-10%	-8%	-3%	-1%	0%	-2%
	Scotland	0%	2%	-4%	-3%	-3%	-2%	-1%	-0%	0%	-0%
	Northern Ireland	11%	5%	3%	1%	5%	1%	0%	2%	0%	-2%
	Wales	1%	-4%	-8%	-5%	-6%	-2%	2%	3%	0%	-2%
	UK	-12%	-12%	-10%	-12%	-9%	-7%	-3%	-1%	0%	-2%

Note: The percentage change is not recorded in the above table for groups with fewer than 10 placed applicants in that cycle or in the 2017 cycle.

R.8 Placed 18 year old applicants by region of domicile: 28 days after A level results day

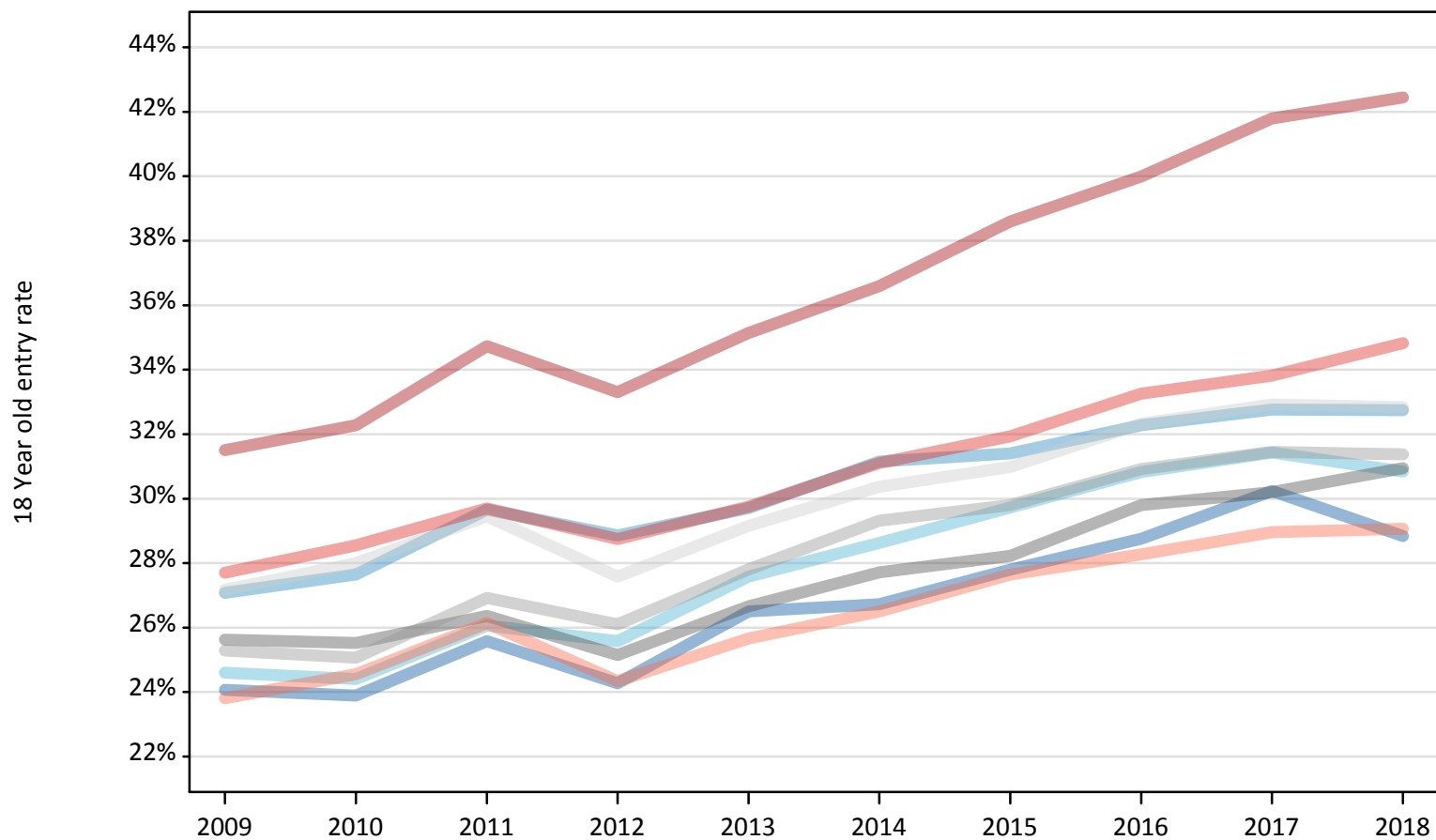
Placed 18 year old applicants: absolute change relative to 2017 cycle totals

Applicant Status	Domicile	2009	2010	2011	2012	2013	2014	2015	2016	2017	2018
Placed	North East	-550	-570	-480	-1,070	-530	-640	-190	-170	0	-640
	North West	-1,130	-1,020	-470	-1,660	-1,470	-670	320	-100	0	-840
	Yorkshire and The Humber	-2,610	-2,860	-2,270	-2,720	-2,020	-1,170	-460	-160	0	-1,010
	East Midlands	-1,500	-1,830	-1,640	-2,150	-1,570	-1,310	-800	-280	0	-280
	West Midlands	-2,380	-2,850	-2,280	-2,600	-1,740	-970	-20	230	0	-390
	East of England	-3,070	-2,810	-1,960	-2,830	-2,050	-1,500	-730	-150	0	-660
	London	-10,220	-9,680	-7,650	-8,550	-6,650	-5,190	-2,630	-1,590	0	770
	South East	-5,530	-4,830	-4,260	-4,700	-4,090	-3,290	-1,520	-380	0	90
	South West	-2,180	-1,970	-1,150	-2,140	-1,690	-1,370	-190	-340	0	-440
	(England total)	-29,180	-28,430	-22,160	-28,410	-21,810	-16,100	-6,210	-2,950	0	-3,390
	Scotland	10	270	-550	-440	-410	-300	-200	-20	0	-30
	Northern Ireland	910	390	230	60	400	110	10	170	0	-200
	Wales	110	-460	-850	-550	-630	-250	210	350	0	-210
	UK	-28,150	-28,230	-23,330	-29,330	-22,450	-16,540	-6,200	-2,440	0	-3,830

R.9 Placed 18 year old applicants by region of domicile: 28 days after A level results day

Placed 18 year old applicants: entry rate

- North East
- North West
- Yorkshire and The Humber
- East Midlands
- West Midlands
- East of England
- London
- South East
- South West



R.10 Placed 18 year old applicants by region of domicile: 28 days after A level results day

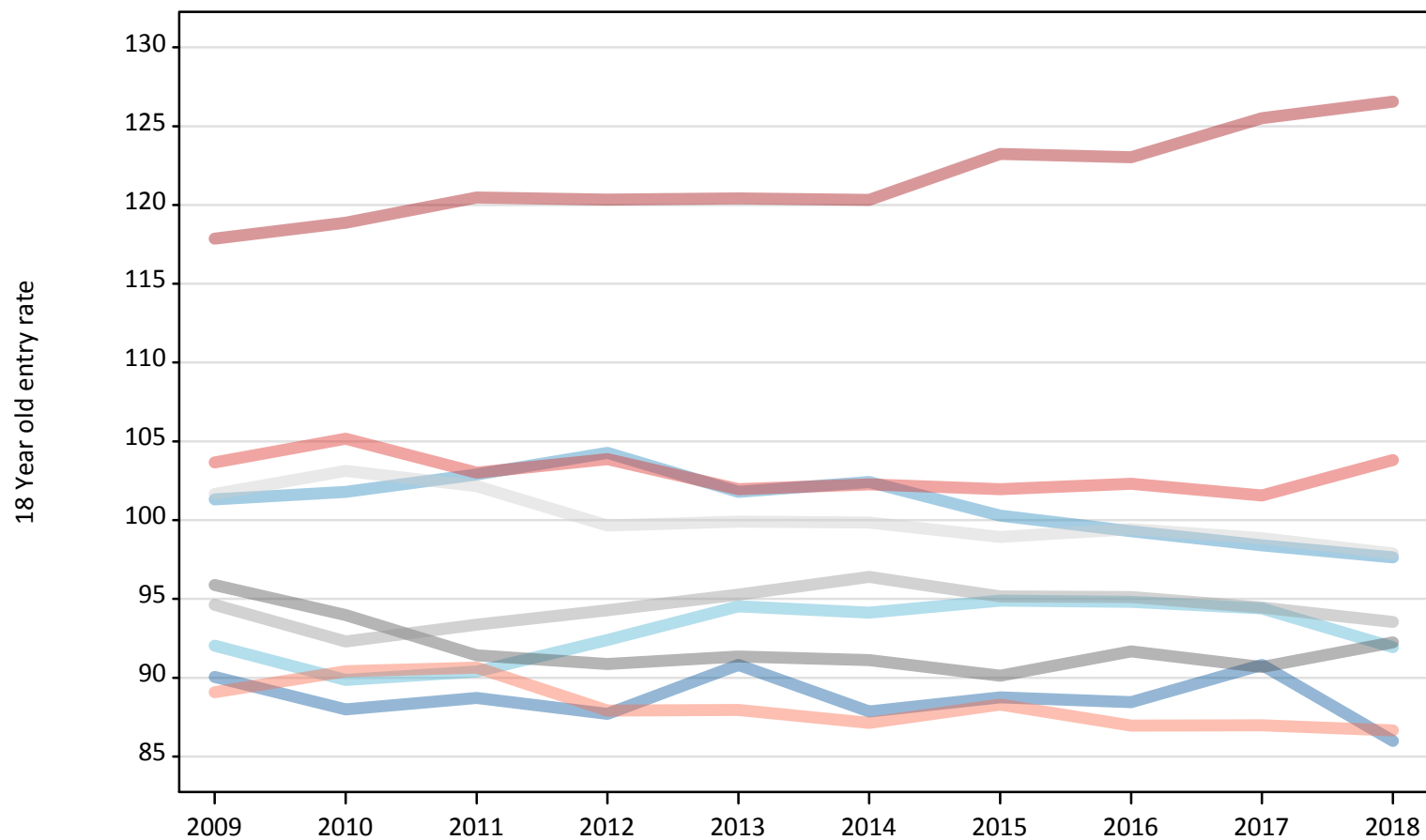
Placed 18 year old applicants: entry rate

Applicant Status	Domicile	2009	2010	2011	2012	2013	2014	2015	2016	2017	2018
Placed	North East	24.1%	23.9%	25.6%	24.3%	26.5%	26.7%	27.8%	28.8%	30.2%	28.8%
	North West	27.1%	27.6%	29.7%	28.9%	29.7%	31.1%	31.4%	32.3%	32.8%	32.7%
	Yorkshire and The Humber	24.6%	24.4%	26.1%	25.6%	27.6%	28.6%	29.7%	30.8%	31.4%	30.8%
	East Midlands	25.6%	25.5%	26.4%	25.1%	26.7%	27.7%	28.2%	29.8%	30.2%	30.9%
	West Midlands	25.3%	25.1%	26.9%	26.1%	27.8%	29.3%	29.8%	30.9%	31.4%	31.4%
	East of England	27.2%	28.0%	29.5%	27.6%	29.2%	30.4%	31.0%	32.3%	32.9%	32.8%
	London	31.5%	32.3%	34.7%	33.3%	35.1%	36.6%	38.6%	40.0%	41.8%	42.4%
	South East	27.7%	28.6%	29.7%	28.8%	29.8%	31.1%	31.9%	33.3%	33.8%	34.8%
	South West	23.8%	24.5%	26.1%	24.3%	25.7%	26.5%	27.6%	28.3%	29.0%	29.1%
	(England total)	26.7%	27.2%	28.8%	27.7%	29.2%	30.4%	31.3%	32.5%	33.3%	33.5%
	Scotland	22.5%	23.3%	22.4%	22.9%	23.1%	23.4%	23.9%	24.8%	25.5%	26.2%
	Northern Ireland	35.9%	34.5%	34.6%	33.7%	36.0%	35.1%	33.9%	35.1%	34.8%	35.4%
	Wales	25.9%	24.8%	24.6%	25.4%	25.7%	26.9%	28.0%	29.5%	29.1%	29.5%
	UK	26.6%	27.0%	28.3%	27.4%	28.7%	29.8%	30.7%	31.8%	32.5%	32.8%

R.11 Placed 18 year old applicants by region of domicile: 28 days after A level results day

Placed 18 year old applicants: entry rates (indexed to 100 = England)

- North East
- North West
- Yorkshire and The Humber
- East Midlands
- West Midlands
- East of England
- London
- South East
- South West



R.12 Placed 18 year old applicants by region of domicile: 28 days after A level results day

Placed 18 year old applicants: entry rate (indexed to 100 = England)

Applicant Status	Domicile	2009	2010	2011	2012	2013	2014	2015	2016	2017	2018
Placed	North East	90	88	89	88	91	88	89	88	91	86
	North West	101	102	103	104	102	102	100	99	98	98
	Yorkshire and The Humber	92	90	90	92	95	94	95	95	94	92
	East Midlands	96	94	91	91	91	91	90	92	91	92
	West Midlands	95	92	93	94	95	96	95	95	94	94
	East of England	102	103	102	100	100	100	99	99	99	98
	London	118	119	120	120	120	120	123	123	125	127
	South East	104	105	103	104	102	102	102	102	102	104
	South West	89	90	91	88	88	87	88	87	87	87
	(England total)	100	100	100	100	100	100	100	100	100	100