

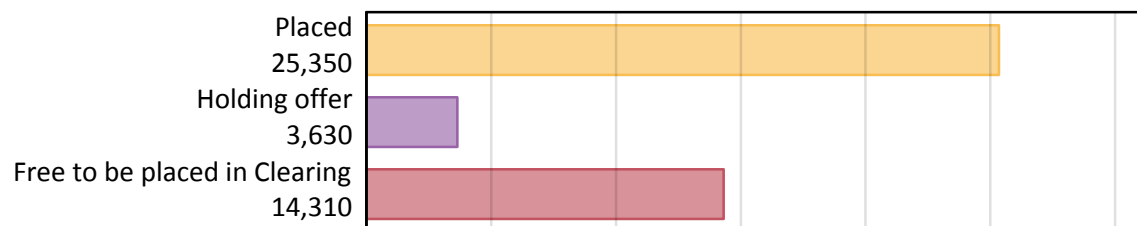
# Daily Clearing Analysis: Overview

## B7 Nursing analysis at 00:05 on Friday 31 August 2018 (15 days after A level results day)

### AB.1 Placed applicants to nursing from all domiciles, 2018 cycle

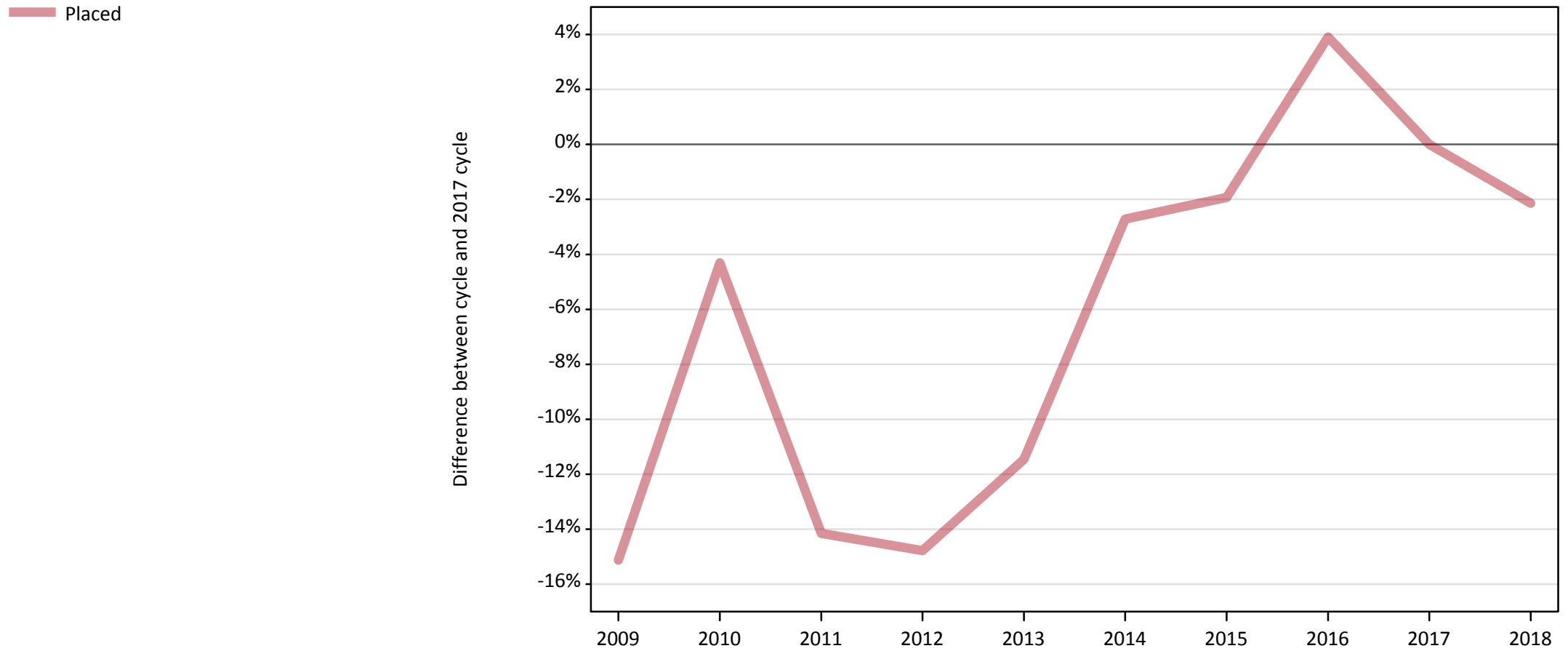
Applicant type	Status	2018
Main scheme	Placed (Clearing)	1,500
	Placed (Adjustment)	10
	Placed (Firm)	21,740
	Placed (Insurance)	510
	Placed (Other)	1,050
	Holding offer	3,630
	Free to be placed in Clearing	14,310
Direct to Clearing	Placed (Direct to Clearing)	540
	Other (Direct to Clearing)	420
All applicants	Placed	25,350

### AB.2 Summary of nursing applicants who are placed, holding offers or free to be placed in Clearing ( all domiciles )



### AB.3 Placed applicants to nursing from all domiciles: 15 days after A level results day

Placed applicants to nursing: difference between cycle and 2017 cycle



Note: The percentage change is not plotted in the above chart for groups with fewer than 30 placed applicants in any one cycle.

**AB.4 Placed applicants to nursing from all domiciles: 15 days after A level results day**

Placed applicants to nursing: applicants at 15 days after A level results day

Applicant type	Status	2009	2010	2011	2012	2013	2014	2015	2016	2017	2018
All applicants	Placed	21,990	24,790	22,240	22,070	22,940	25,200	25,400	26,920	25,900	25,350

**AB.5 Placed applicants to nursing from all domiciles: 15 days after A level results day**

Placed applicants to nursing: difference between cycle and 2017 cycle

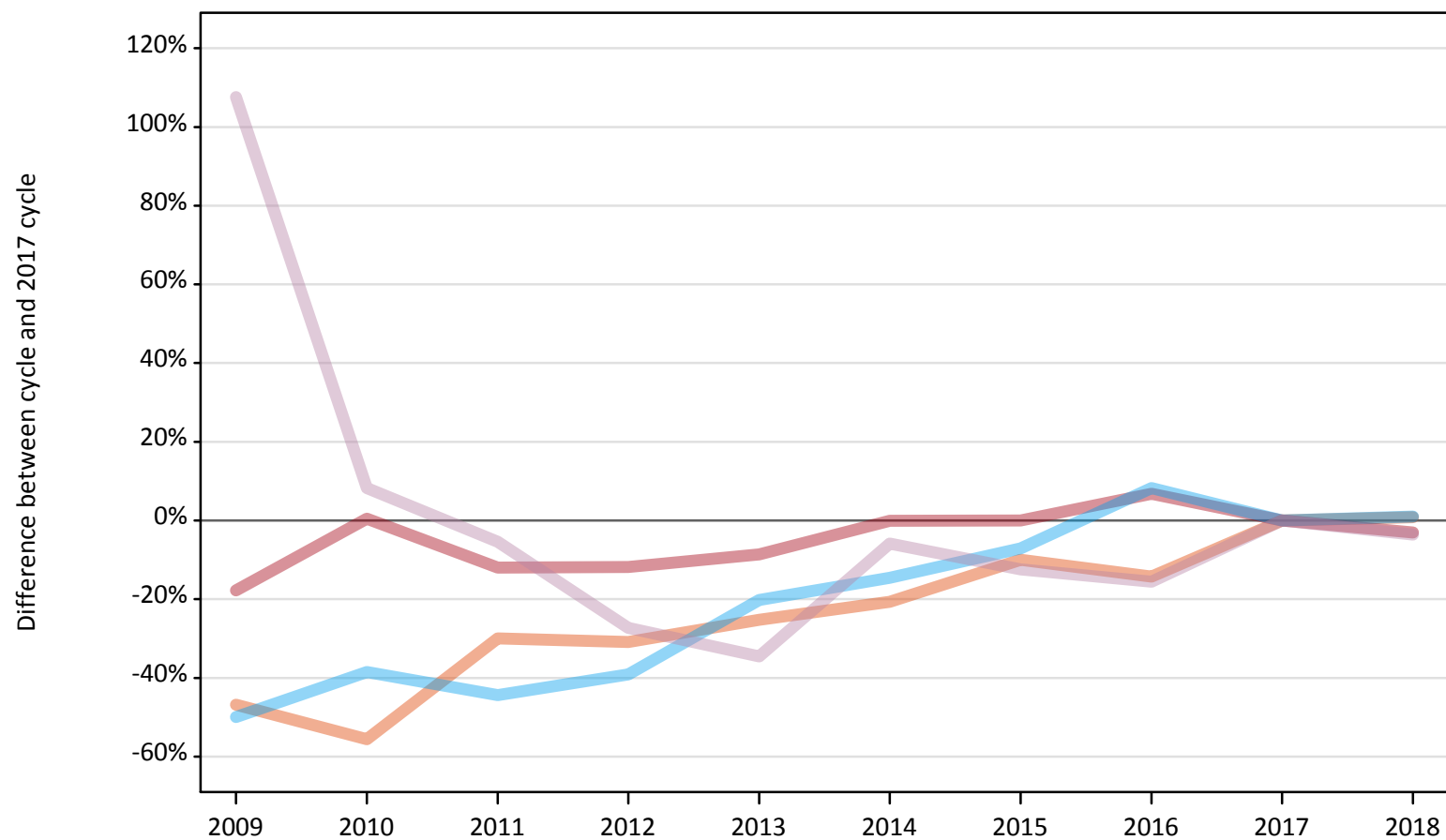
Applicant type	Status	2009	2010	2011	2012	2013	2014	2015	2016	2017	2018
All applicants	Placed	-15%	-4%	-14%	-15%	-11%	-3%	-2%	4%	0%	-2%

Note: The percentage change is not recorded in the above table for groups with fewer than 10 placed applicants in that cycle or in the 2017 cycle.

## AB.6 Placed main scheme applicants to nursing from all domiciles: 15 days after A level results day

All Main scheme placed routes (excluding Adjustment): difference between cycle and 2017 cycle

- Placed (Clearing)
- Placed (Firm)
- Placed (Insurance)
- Placed (Other)



Note: The percentage change is not plotted in the above chart for groups with fewer than 30 placed applicants in any one cycle.

**AB.7 Placed main scheme applicants to nursing from all domiciles: 15 days after A level results day**

All Main scheme placed routes (excluding Adjustment): applicants at 15 days after A level results day

Applicant type	Status	2009	2010	2011	2012	2013	2014	2015	2016	2017	2018
Main scheme	Placed (Clearing)	790	660	1,040	1,030	1,110	1,180	1,340	1,280	1,490	1,500
	Placed (Firm)	18,450	22,530	19,740	19,770	20,500	22,420	22,420	23,940	22,430	21,740
	Placed (Insurance)	260	310	280	310	410	440	470	550	510	510
	Placed (Other)	2,250	1,170	1,030	790	710	1,020	950	920	1,090	1,050

**AB.8 Placed main scheme applicants to nursing from all domiciles: 15 days after A level results day**

All Main scheme placed routes (excluding Adjustment): difference between cycle and 2017 cycle

Applicant type	Status	2009	2010	2011	2012	2013	2014	2015	2016	2017	2018
Main scheme	Placed (Clearing)	-47%	-56%	-30%	-31%	-25%	-21%	-10%	-14%	0%	1%
	Placed (Firm)	-18%	0%	-12%	-12%	-9%	-0%	-0%	7%	0%	-3%
	Placed (Insurance)	-50%	-39%	-44%	-39%	-20%	-15%	-7%	8%	0%	1%
	Placed (Other)	108%	8%	-5%	-27%	-35%	-6%	-12%	-16%	0%	-4%

Note: The percentage change is not recorded in the above table for groups with fewer than 10 placed applicants in that cycle or in the 2017 cycle.

**AB.9 Main scheme applicants placed to nursing through adjustment: 15 days after A level results day**

Placed through adjustment: difference between cycle and 2017 cycle

**[This chart is not part of this report]**

**AB.10 Main scheme applicants placed to nursing through adjustment: 15 days after A level results day**

Placed through adjustment: applicants at 15 days after A level results day

Applicant type	Status	2009	2010	2011	2012	2013	2014	2015	2016	2017	2018
Main scheme	Placed (Adjustment)	0	0	0	0	10	10	10	0	20	10

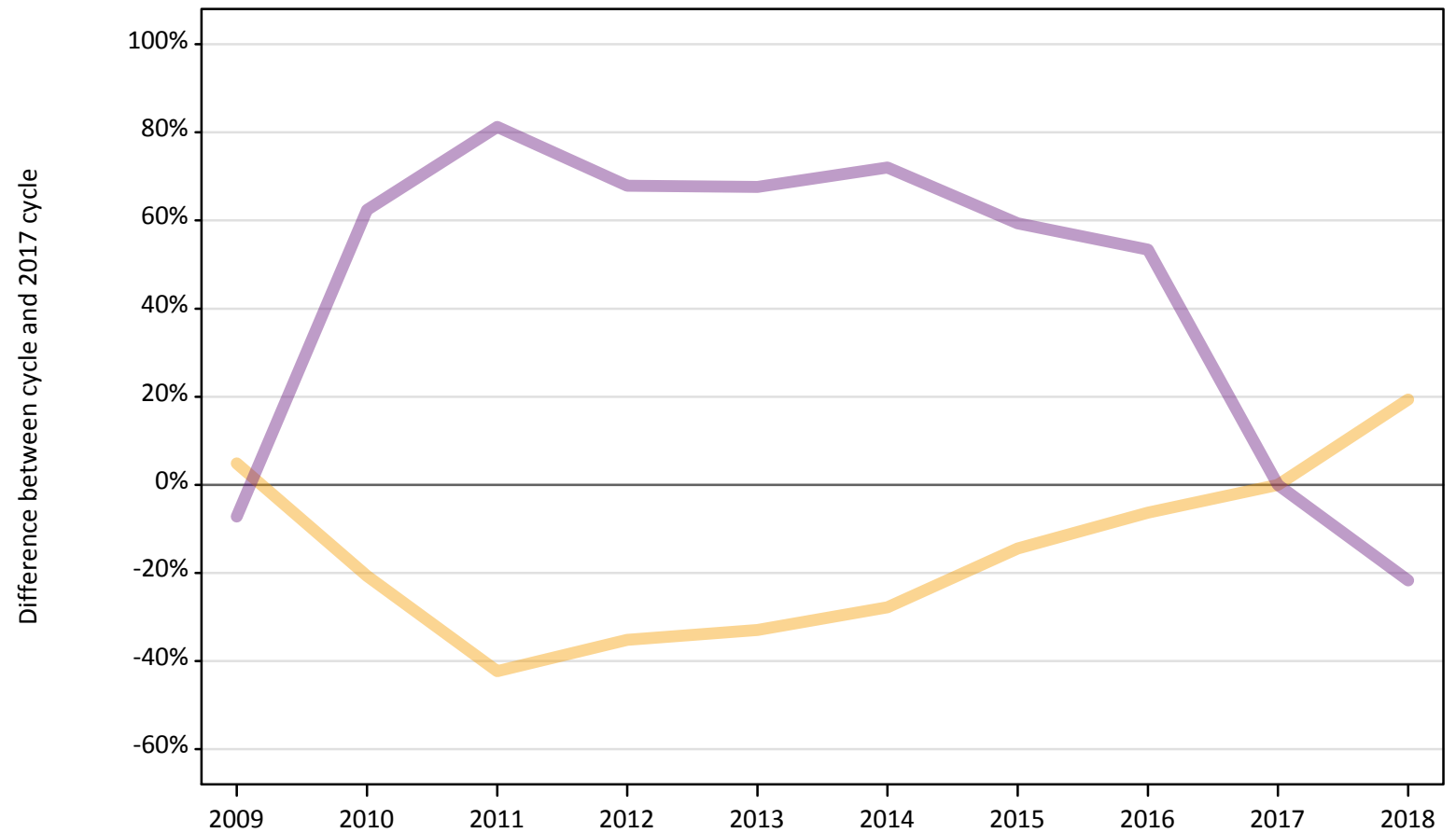
**AB.11 Main scheme applicants placed to nursing through adjustment: 15 days after A level results day**

Placed through adjustment: difference between cycle and 2017 cycle

**[This table is not part of this report]**

**AB.12 Main scheme applicants to nursing not currently placed from all domiciles: 15 days after A level results day**  
Applicants in unplaced states: difference between cycle and 2017 cycle

— Holding offer  
— Free to be placed in Clearing



Note: The percentage change is not plotted in the above chart for groups with fewer than 30 unplaced applicants in any one cycle.

**AB.13 Main scheme applicants to nursing not currently placed from all domiciles: 15 days after A level results day**

Applicants in unplaced states: applicants at 15 days after A level results day

Applicant type	Status	2009	2010	2011	2012	2013	2014	2015	2016	2017	2018
Main scheme	Holding offer	3,190	2,410	1,760	1,970	2,040	2,200	2,600	2,850	3,040	3,630
	Free to be placed in Clearing	16,950	29,670	33,120	30,670	30,620	31,420	29,110	28,030	18,270	14,310

**AB.14 Main scheme applicants to nursing not currently placed from all domiciles: 15 days after A level results day**

Applicants in unplaced states: difference between cycle and 2017 cycle

Applicant type	Status	2009	2010	2011	2012	2013	2014	2015	2016	2017	2018
Main scheme	Holding offer	5%	-21%	-42%	-35%	-33%	-28%	-14%	-6%	0%	19%
	Free to be placed in Clearing	-7%	62%	81%	68%	68%	72%	59%	53%	0%	-22%

Note: The percentage change is not recorded in the above table for groups with fewer than 10 unplaced applicants in that cycle or in the 2017 cycle.



### AB.15 Direct to Clearing applicants from all domiciles: 15 days after A level results day

Direct to Clearing: difference between cycle and 2017 cycle



Note: The percentage change is not plotted in the above chart for groups with fewer than 30 placed applicants in any one cycle.

**AB.16 Direct to Clearing applicants from all domiciles: 15 days after A level results day**

Direct to Clearing 15 days after A level results day

Applicant type	Status	2009	2010	2011	2012	2013	2014	2015	2016	2017	2018
Direct to Clearing	Placed (Direct to Clearing)	240	110	140	170	210	140	210	230	380	540
	Other (Direct to Clearing)	160	60	120	140	170	130	240	220	340	420

**AB.17 Direct to Clearing applicants from all domiciles: 15 days after A level results day**

Direct to Clearing: difference between cycle and 2017 cycle

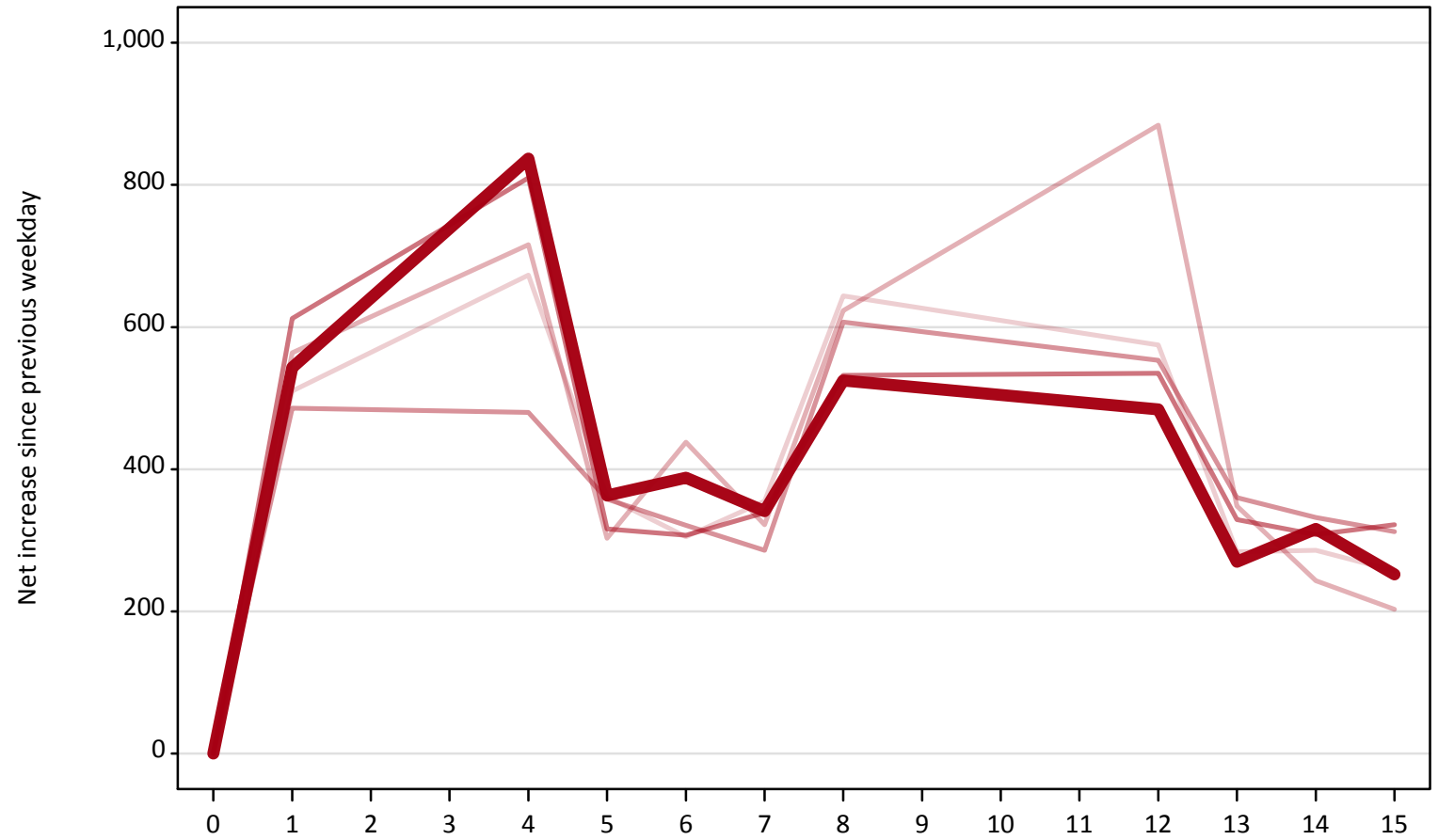
Applicant type	Status	2009	2010	2011	2012	2013	2014	2015	2016	2017	2018
Direct to Clearing	Placed (Direct to Clearing)	-38%	-71%	-63%	-54%	-46%	-63%	-45%	-39%	0%	42%
	Other (Direct to Clearing)	-52%	-84%	-65%	-60%	-50%	-61%	-30%	-37%	0%	24%

Note: The percentage change is not recorded in the above table for groups with fewer than 10 placed applicants in that cycle or in the 2017 cycle.

### AB.18 All Placed: Daily net change (from all domiciles)

Net increase since previous weekday (2018 cycle up to 15 days after A level results day)

- 2014
- 2015
- 2016
- 2017
- 2018

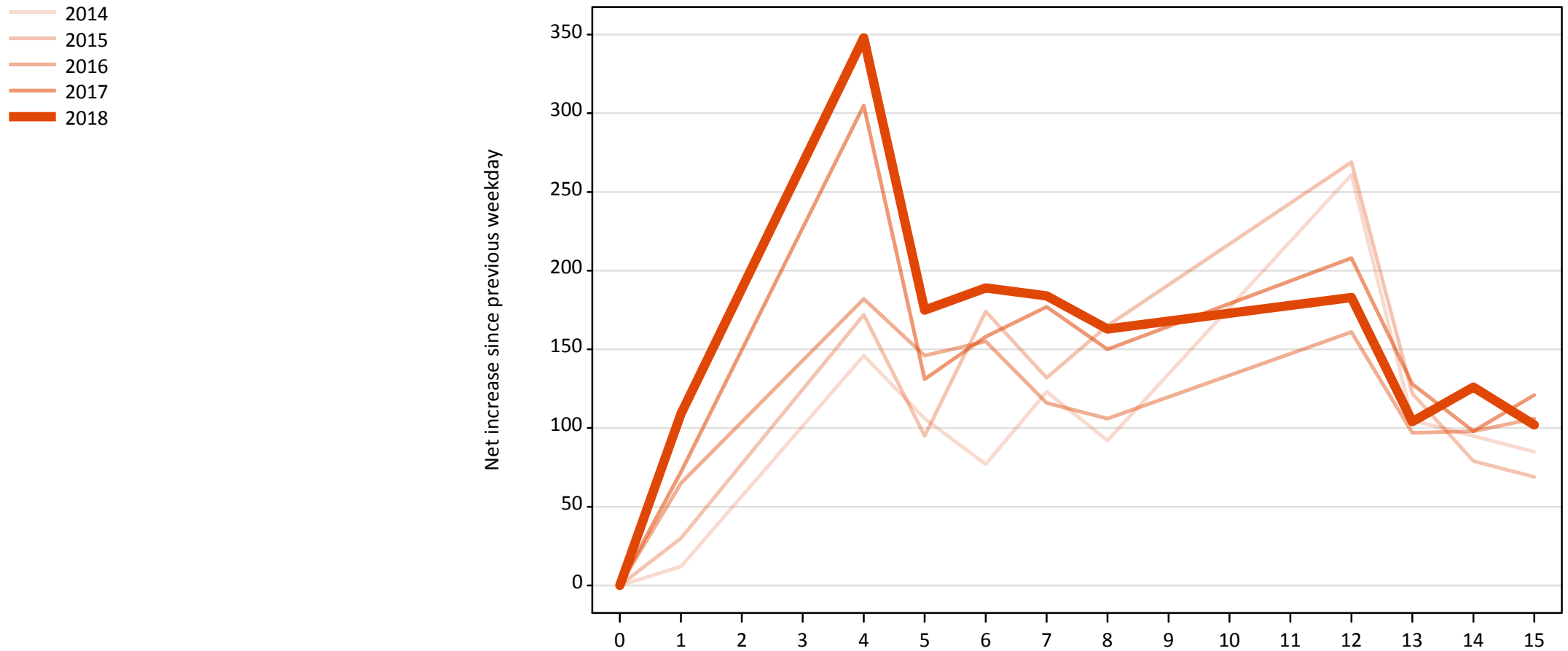


**AB.19 All Placed: Daily net change (from all domiciles)**

Net increase since previous weekday (2018 cycle up to 15 days after A level results day)

Applicant status, days since A level results day		2014	2015	2016	2017	2018
All Placed	0	0	0	0	0	0
	1	510	560	490	610	540
	4	670	720	480	810	840
	5	360	300	360	320	360
	6	310	440	320	310	390
	7	360	320	290	340	340
	8	640	620	610	530	530
	12	580	880	550	540	480
	13	280	350	360	330	270
	14	290	240	330	310	320
	15	260	200	310	320	250

**AB.20 Placed through Clearing only: Daily net change (from all domiciles)**  
Net increase since previous weekday (2018 cycle up to 15 days after A level results day)



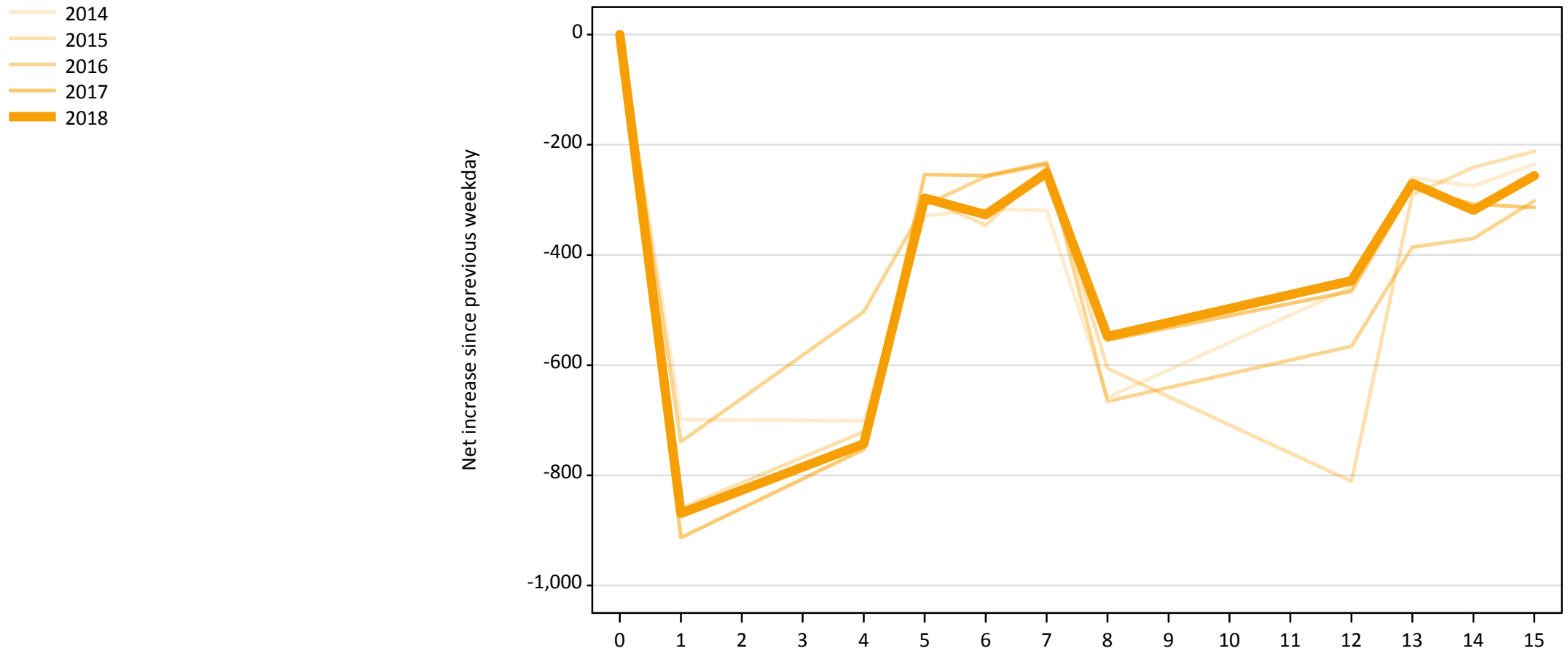
**AB.21 Placed through Clearing only: Daily net change (from all domiciles)**

Net increase since previous weekday (2018 cycle up to 15 days after A level results day)

Applicant status, days since A level results day		2014	2015	2016	2017	2018
Placed through Clearing only	0	0	0	0	0	0
	1	10	30	70	70	110
	4	150	170	180	310	350
	5	110	100	150	130	180
	6	80	170	160	160	190
	7	120	130	120	180	180
	8	90	170	110	150	160
	12	260	270	160	210	180
	13	110	120	100	130	100
	14	100	80	100	100	130
	15	90	70	110	120	100

## AB.22 Holding Offer: Daily net change (from all domiciles)

Net increase since previous weekday (2018 cycle up to 15 days after A level results day)



**AB.23 Holding Offer: Daily net change (from all domiciles)**

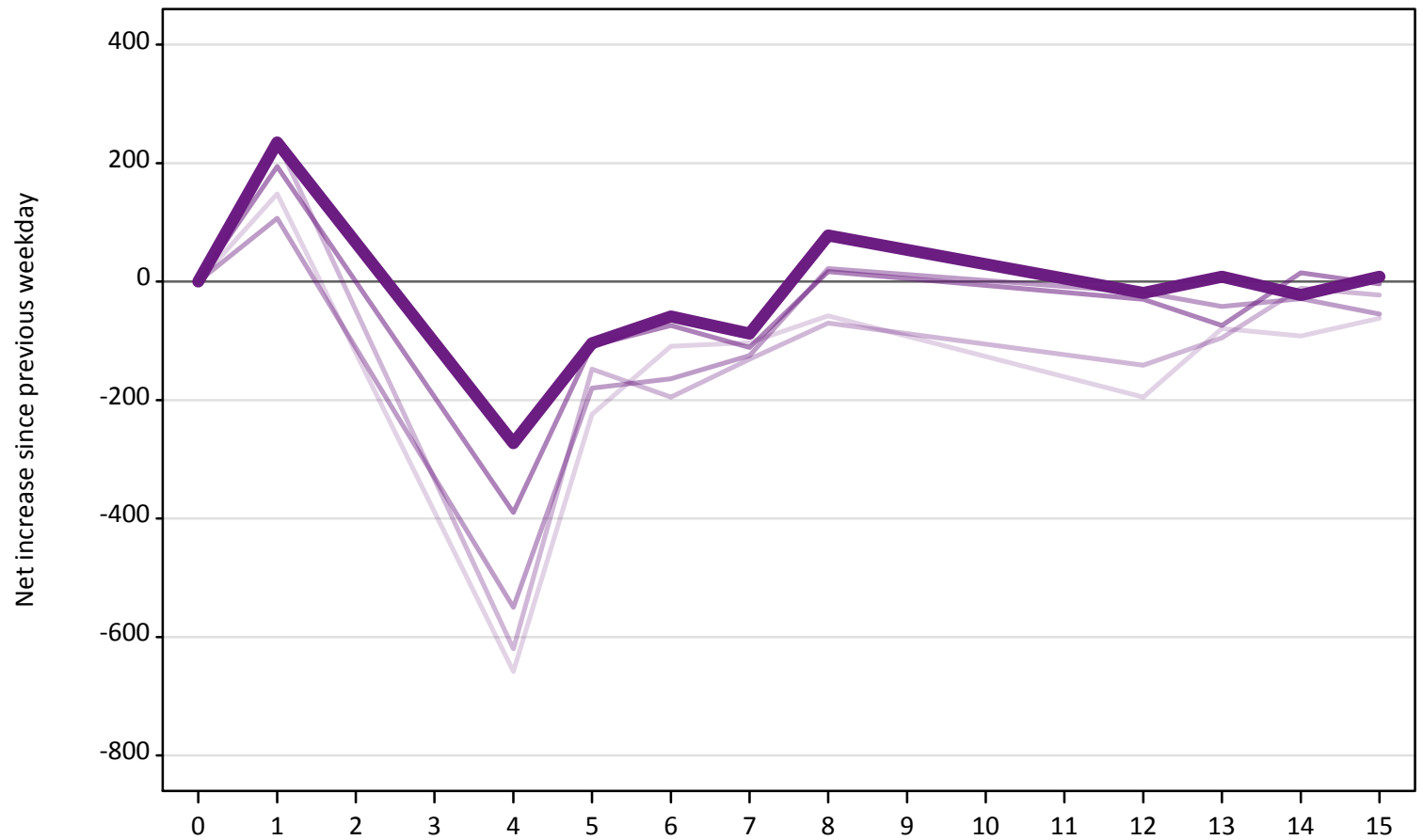
Net increase since previous weekday (2018 cycle up to 15 days after A level results day)

Applicant status, days since A level results day		2014	2015	2016	2017	2018
Holding Offer	0	0	0	0	0	0
	1	-700	-860	-740	-910	-870
	4	-700	-720	-500	-750	-740
	5	-330	-300	-310	-250	-300
	6	-320	-350	-260	-260	-330
	7	-320	-240	-240	-230	-250
	8	-660	-610	-670	-560	-550
	12	-460	-810	-570	-470	-450
	13	-260	-290	-390	-280	-270
	14	-280	-240	-370	-310	-320
	15	-240	-210	-300	-310	-260



**AB.24 Free to be placed in Clearing: Daily net change (from all domiciles)**  
Net increase since previous weekday (2018 cycle up to 15 days after A level results day)

- 2014
- 2015
- 2016
- 2017
- 2018



**AB.25 Free to be placed in Clearing: Daily net change (from all domiciles)**

Net increase since previous weekday (2018 cycle up to 15 days after A level results day)

Applicant status, days since A level results day		2014	2015	2016	2017	2018
Free to be placed in Clearing	0	0	0	0	0	0
	1	150	240	110	190	240
	4	-660	-620	-550	-390	-270
	5	-220	-150	-180	-110	-100
	6	-110	-200	-160	-70	-60
	7	-100	-130	-130	-110	-90
	8	-60	-70	20	20	80
	12	-200	-140	-20	-30	-20
	13	-80	-100	-40	-70	10
	14	-90	-10	-30	20	-20
	15	-60	-20	-60	0	10