

# Daily Clearing Analysis: Age

## B7 Nursing analysis at 00:05 on Friday 31 August 2018 (15 days after A level results day)

### CB.1 Placed applicants to nursing by country of domicile and age group, 2018 cycle (15 days after A level results day)

Domicile of applicant	Age group				
	17 and under	18	19	20 to 24	25 and over
England	10	4,720	2,270	4,330	7,620
Northern Ireland	0	340	180	270	240
Scotland	20	570	320	810	1,530
Wales	0	350	190	420	690
UK	20	5,980	2,950	5,820	10,070

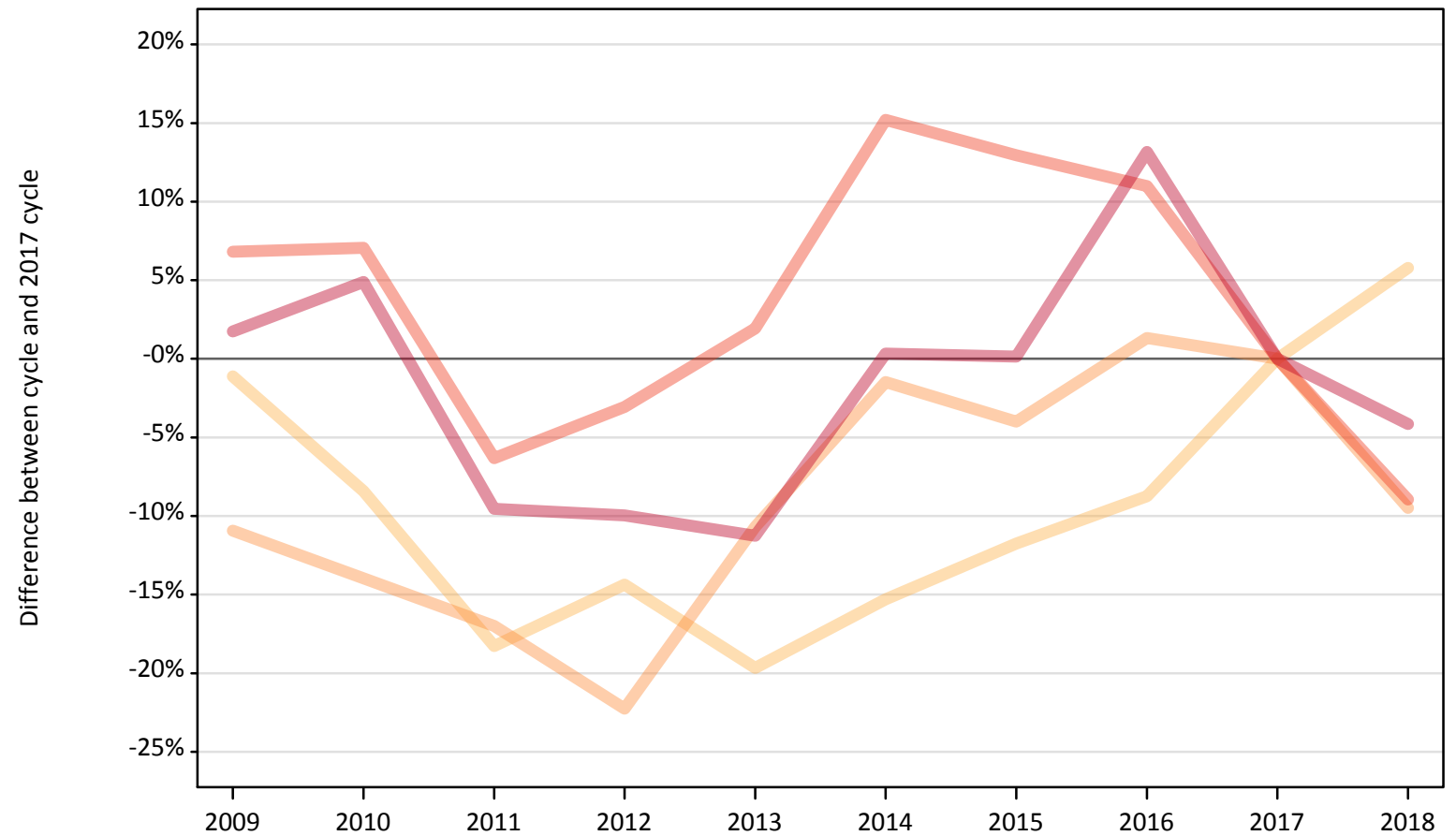
### CB.2 Proportion of 18 year old population placed to nursing by country of domicile, 2018 cycle (15 days after A level results day)

Domicile of applicant	Age group	2018
England	18	0.8%
Northern Ireland	18	1.5%
Scotland	18	1.0%
Wales	18	1.0%

### CB.3 Placed applicants to nursing from England by age group at 15 days after A level results day

Selected age groups: difference between cycle and 2017 cycle

- 17 and under
- 18
- 19
- 20 to 24
- 25 and over



Note: The percentage change is not plotted in the above chart for groups with fewer than 30 placed applicants in any one cycle.

### CB.4 Placed applicants to nursing from England by age group at 15 days after A level results day

All age groups

Domicile of applicant	Age group	2009	2010	2011	2012	2013	2014	2015	2016	2017	2018
England	17 and under	160	80	30	0	0	10	0	0	10	10
	18	4,410	4,080	3,640	3,820	3,580	3,780	3,930	4,070	4,460	4,720
	19	2,230	2,160	2,080	1,950	2,240	2,470	2,410	2,540	2,510	2,270
	20 to 24	5,080	5,090	4,450	4,610	4,840	5,470	5,370	5,270	4,750	4,330
	25 and over	8,090	8,340	7,190	7,160	7,050	7,970	7,960	8,990	7,950	7,620

### CB.5 Placed applicants to nursing from England by age group at 15 days after A level results day

Selected age groups: difference between cycle and 2017 cycle

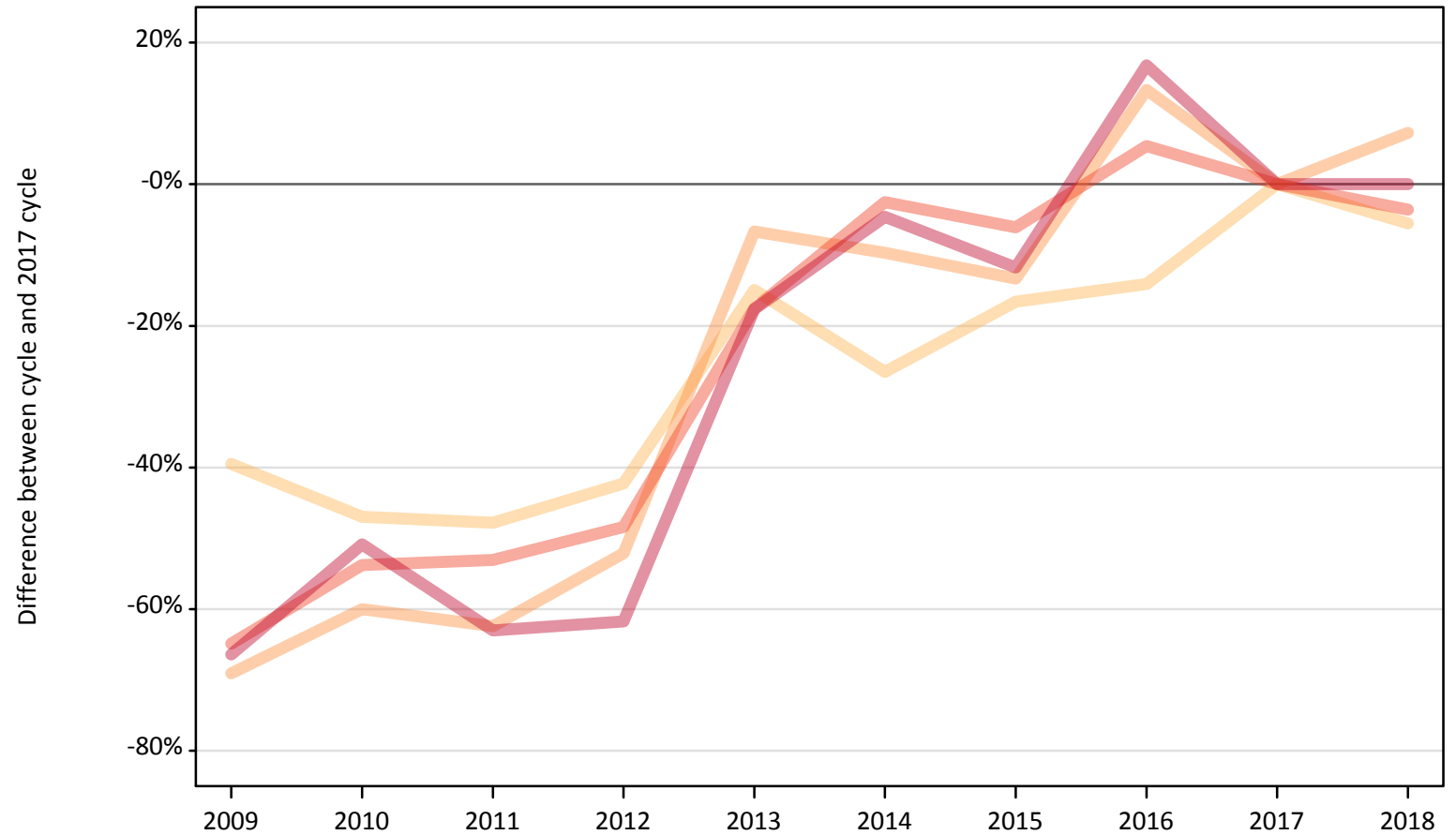
Domicile of applicant	Age group	2009	2010	2011	2012	2013	2014	2015	2016	2017	2018
England	17 and under	2567%	1250%	333%			-17%			0%	-17%
	18	-1%	-8%	-18%	-14%	-20%	-15%	-12%	-9%	0%	6%
	19	-11%	-14%	-17%	-22%	-11%	-1%	-4%	1%	0%	-9%
	20 to 24	7%	7%	-6%	-3%	2%	15%	13%	11%	0%	-9%
	25 and over	2%	5%	-10%	-10%	-11%	0%	0%	13%	0%	-4%

Note: The percentage change is not recorded in the above table for groups with fewer than 10 placed applicants in that cycle or in the 2017 cycle.

## CB.6 Placed applicants to nursing from Northern Ireland by age group at 15 days after A level results day

Selected age groups: difference between cycle and 2017 cycle

- 17 and under
- 18
- 19
- 20 to 24
- 25 and over



Note: The percentage change is not plotted in the above chart for groups with fewer than 30 placed applicants in any one cycle.

**CB.7 Placed applicants to nursing from Northern Ireland by age group at 15 days after A level results day**

All age groups

Domicile of applicant	Age group	2009	2010	2011	2012	2013	2014	2015	2016	2017	2018
Northern Ireland	17 and under	0	0	0	0	0	0	0	0	0	0
	18	220	190	190	210	310	270	300	310	360	340
	19	50	70	60	80	150	150	140	190	170	180
	20 to 24	100	130	130	140	230	270	260	290	280	270
	25 and over	80	120	90	90	200	230	210	280	240	240

**CB.8 Placed applicants to nursing from Northern Ireland by age group at 15 days after A level results day**

Selected age groups: difference between cycle and 2017 cycle

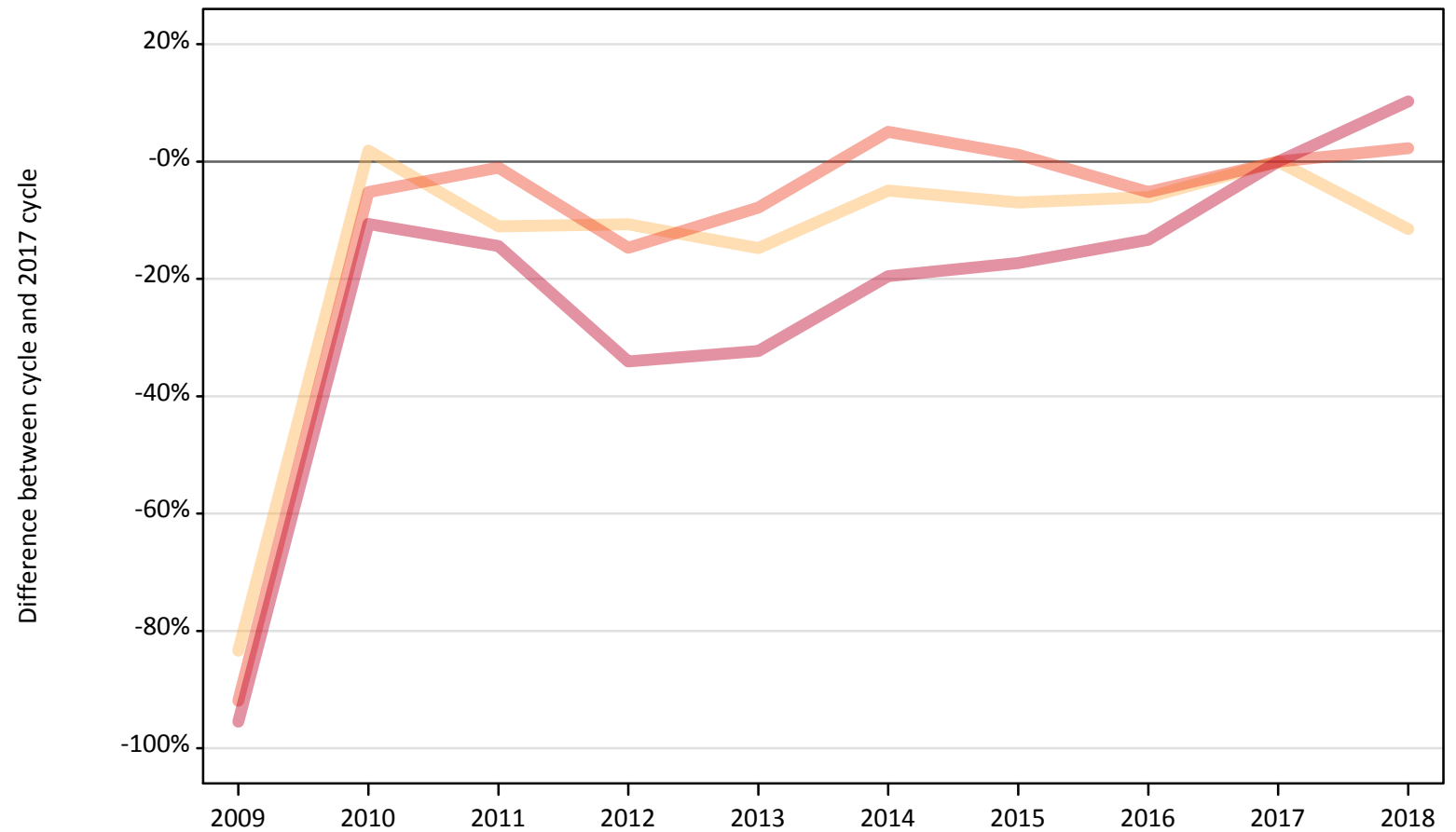
Domicile of applicant	Age group	2009	2010	2011	2012	2013	2014	2015	2016	2017	2018
Northern Ireland	17 and under										
	18	-40%	-47%	-48%	-42%	-15%	-27%	-17%	-14%	0%	-6%
	19	-69%	-60%	-62%	-52%	-7%	-10%	-13%	13%	0%	7%
	20 to 24	-65%	-54%	-53%	-48%	-18%	-3%	-6%	5%	0%	-4%
	25 and over	-66%	-51%	-63%	-62%	-18%	-5%	-12%	17%	0%	0%

Note: The percentage change is not recorded in the above table for groups with fewer than 10 placed applicants in that cycle or in the 2017 cycle.

## CB.9 Placed applicants to nursing from Scotland by age group at 15 days after A level results day

Selected age groups: difference between cycle and 2017 cycle

- 17 and under
- 18
- 19
- 20 to 24
- 25 and over



Note: The percentage change is not plotted in the above chart for groups with fewer than 30 placed applicants in any one cycle.

**CB.10 Placed applicants to nursing from Scotland by age group at 15 days after A level results day**

All age groups

Domicile of applicant	Age group	2009	2010	2011	2012	2013	2014	2015	2016	2017	2018
Scotland	17 and under	0	40	30	30	20	20	10	20	20	20
	18	110	660	570	580	550	610	600	610	640	570
	19	30	320	300	290	310	330	300	330	310	320
	20 to 24	60	750	780	670	730	830	800	750	790	810
	25 and over	60	1,240	1,190	920	940	1,120	1,150	1,200	1,390	1,530

**CB.11 Placed applicants to nursing from Scotland by age group at 15 days after A level results day**

Selected age groups: difference between cycle and 2017 cycle

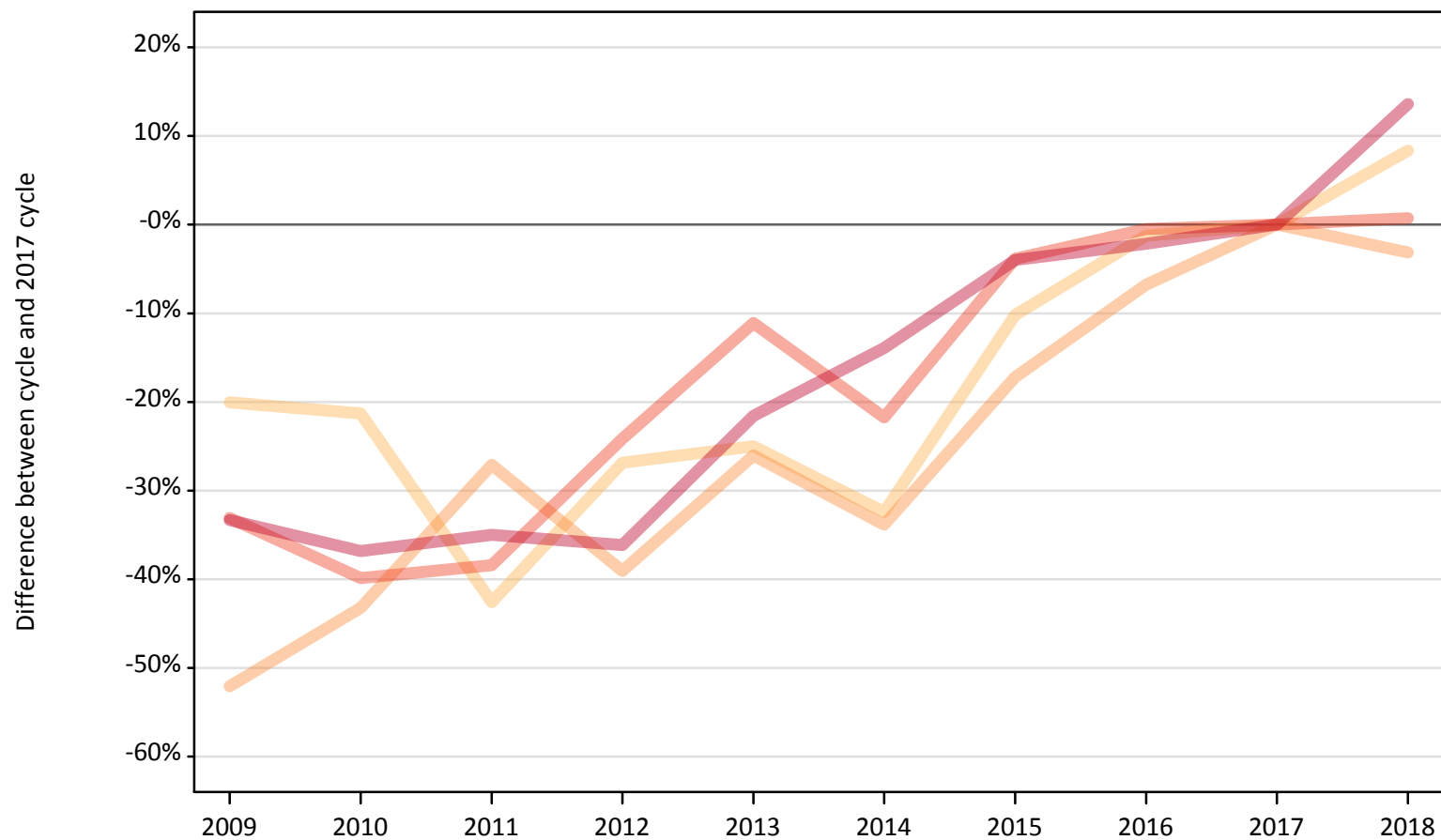
Domicile of applicant	Age group	2009	2010	2011	2012	2013	2014	2015	2016	2017	2018
Scotland	17 and under		100%	14%	18%	0%	-23%	-41%	-23%	0%	-18%
	18	-83%	2%	-11%	-11%	-15%	-5%	-7%	-6%	0%	-11%
	19	-90%	6%	-3%	-6%	1%	8%	-0%	9%	0%	4%
	20 to 24	-92%	-5%	-1%	-15%	-8%	5%	1%	-5%	0%	2%
	25 and over	-95%	-11%	-14%	-34%	-32%	-20%	-17%	-13%	0%	10%

Note: The percentage change is not recorded in the above table for groups with fewer than 10 placed applicants in that cycle or in the 2017 cycle.

## CB.12 Placed applicants to nursing from Wales by age group at 15 days after A level results day

Selected age groups: difference between cycle and 2017 cycle

- 17 and under
- 18
- 19
- 20 to 24
- 25 and over



Note: The percentage change is not plotted in the above chart for groups with fewer than 30 placed applicants in any one cycle.



### CB.13 Placed applicants to nursing from Wales by age group at 15 days after A level results day

All age groups

Domicile of applicant	Age group	2009	2010	2011	2012	2013	2014	2015	2016	2017	2018
Wales	17 and under	0	0	0	0	0	0	0	0	0	0
	18	260	260	190	240	240	220	290	320	320	350
	19	90	110	140	120	140	130	160	180	190	190
	20 to 24	280	250	260	310	370	320	400	410	410	420
	25 and over	400	380	390	390	470	520	580	590	600	690

### CB.14 Placed applicants to nursing from Wales by age group at 15 days after A level results day

Selected age groups: difference between cycle and 2017 cycle

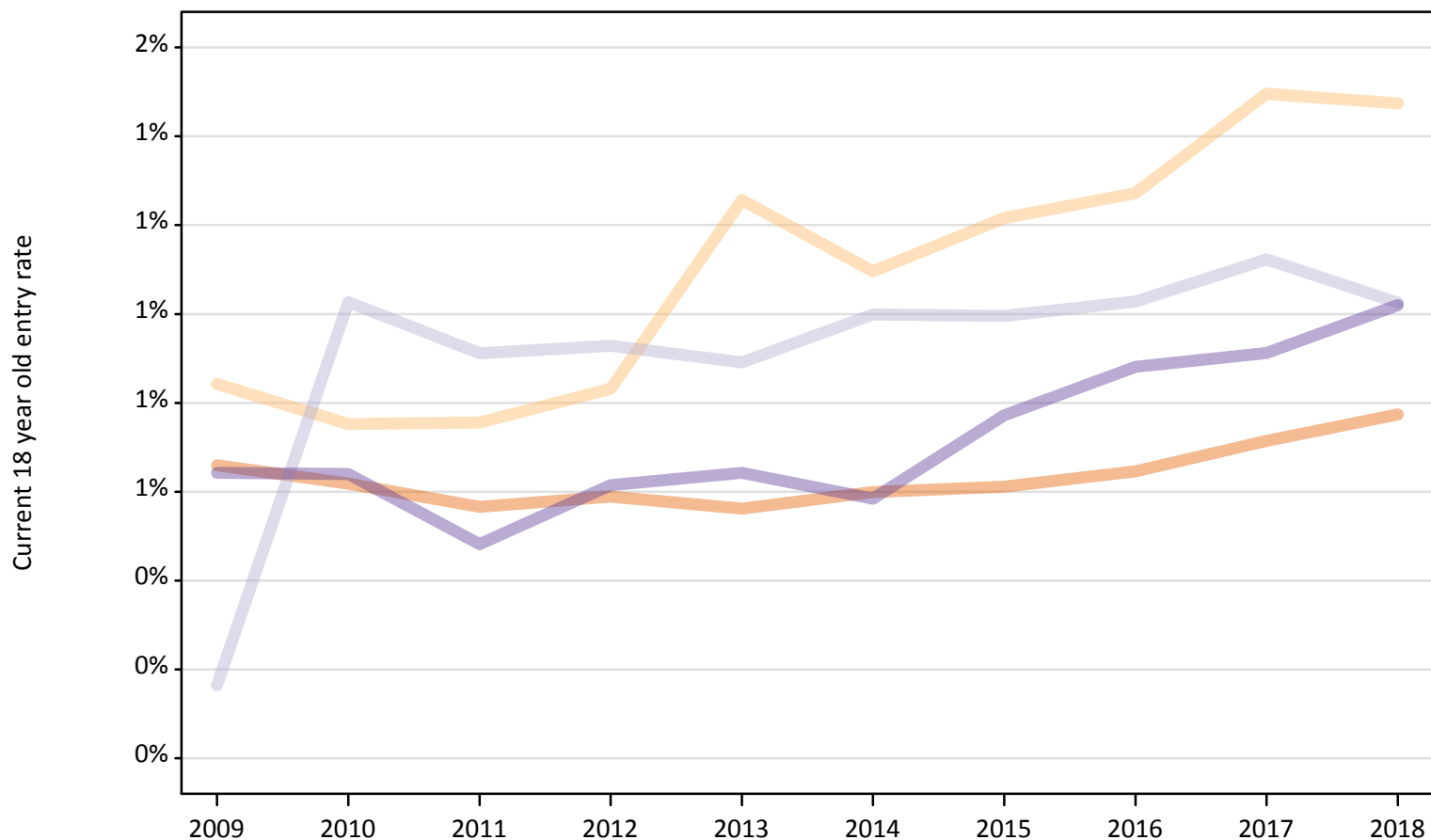
Domicile of applicant	Age group	2009	2010	2011	2012	2013	2014	2015	2016	2017	2018
Wales	17 and under										
	18	-20%	-21%	-43%	-27%	-25%	-32%	-10%	-1%	0%	8%
	19	-52%	-43%	-27%	-39%	-26%	-34%	-17%	-7%	0%	-3%
	20 to 24	-33%	-40%	-38%	-24%	-11%	-22%	-4%	-0%	0%	1%
	25 and over	-33%	-37%	-35%	-36%	-22%	-14%	-4%	-2%	0%	14%

Note: The percentage change is not recorded in the above table for groups with fewer than 10 placed applicants in that cycle or in the 2017 cycle.

**CB.15 Entry rates to nursing for 18 year olds by UK country of domicile: 15 days after A level results day**

Placed 18 year old applicants as a proportion of the 18 year old population

- England
- Northern Ireland
- Scotland
- Wales



**CB.16 Entry rates to nursing for 18 year olds by UK country of domicile: 15 days after A level results day**

Placed 18 year old applicants as a proportion of the 18 year old population

Domicile of applicant	Age group	2009	2010	2011	2012	2013	2014	2015	2016	2017	2018
England	18	0.7%	0.6%	0.6%	0.6%	0.6%	0.6%	0.6%	0.6%	0.7%	0.8%
Northern Ireland	18	0.8%	0.8%	0.8%	0.8%	1.3%	1.1%	1.2%	1.3%	1.5%	1.5%
Scotland	18	0.2%	1.0%	0.9%	0.9%	0.9%	1.0%	1.0%	1.0%	1.1%	1.0%
Wales	18	0.6%	0.6%	0.5%	0.6%	0.6%	0.6%	0.8%	0.9%	0.9%	1.0%