

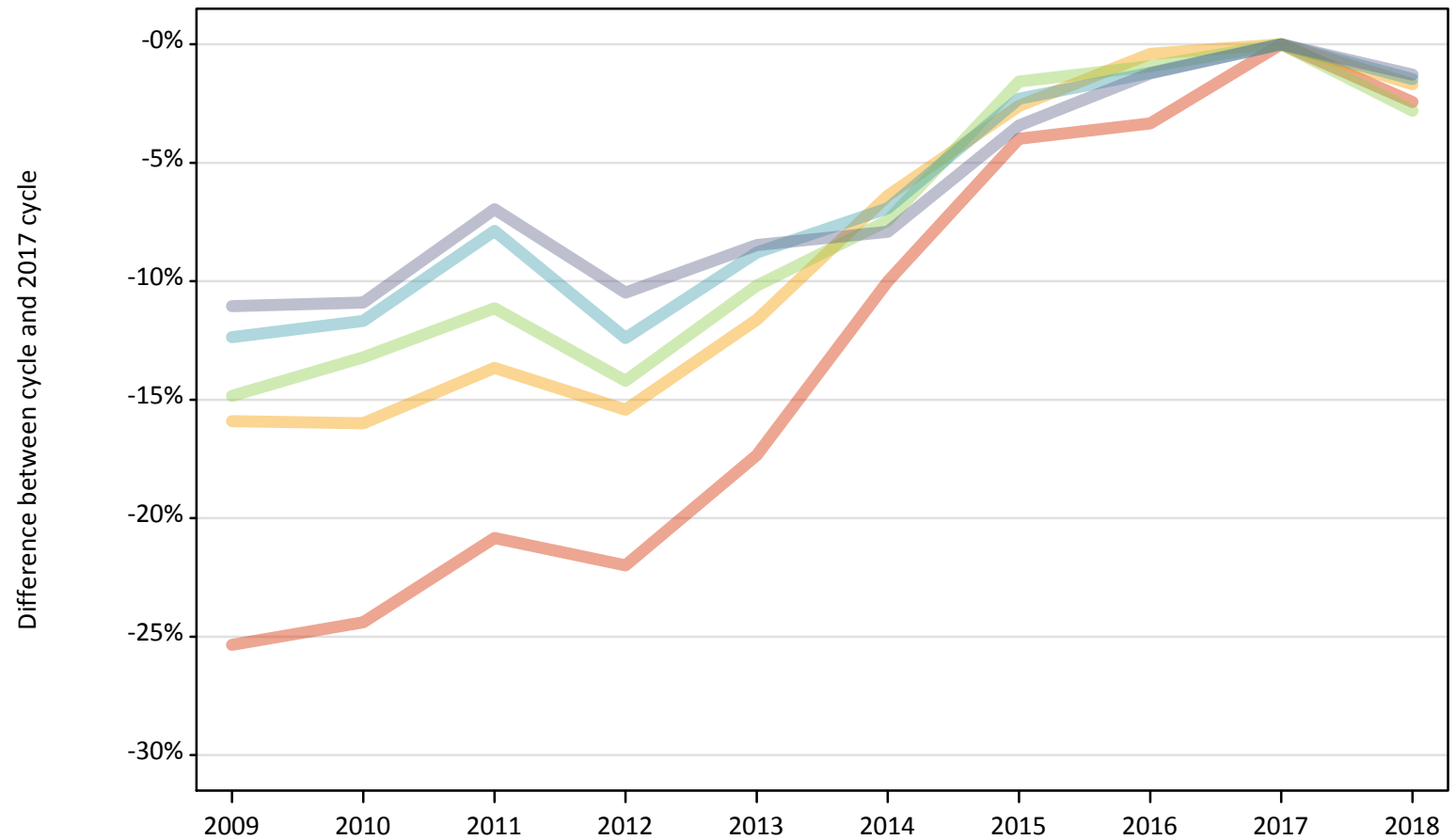
Daily Clearing Analysis: POLAR4

Analysis at 00:05 on Friday 31 August 2018 (15 days after A level results day)

P.1 Placed 18 year old applicants from England by POLAR4 quintile: 15 days after A level results day

Placed 18 year old applicants: change relative to 2017 cycle totals

- Quintile 1
- Quintile 2
- Quintile 3
- Quintile 4
- Quintile 5



Note: The percentage change is not plotted in the above chart for groups with fewer than 30 placed applicants in any one cycle.

P.2 Placed 18 year old applicants from England by POLAR4 quintile: 15 days after A level results day

Applicant Status	POLAR4	2009	2010	2011	2012	2013	2014	2015	2016	2017	2018
Placed	Quintile 1	16,840	17,050	17,850	17,590	18,640	20,290	21,650	21,800	22,550	22,000
	Quintile 2	26,170	26,140	26,870	26,320	27,510	29,130	30,310	31,000	31,120	30,600
	Quintile 3	32,730	33,360	34,160	32,980	34,520	35,580	37,830	38,080	38,440	37,360
	Quintile 4	41,220	41,540	43,320	41,200	42,900	43,780	45,950	46,460	47,030	46,340
	Quintile 5	59,390	59,490	62,120	59,770	61,110	61,480	64,480	65,940	66,770	65,910

P.3 Placed 18 year old applicants from England by POLAR4 quintile: 15 days after A level results day

Placed 18 year old applicants: change relative to 2017 cycle totals

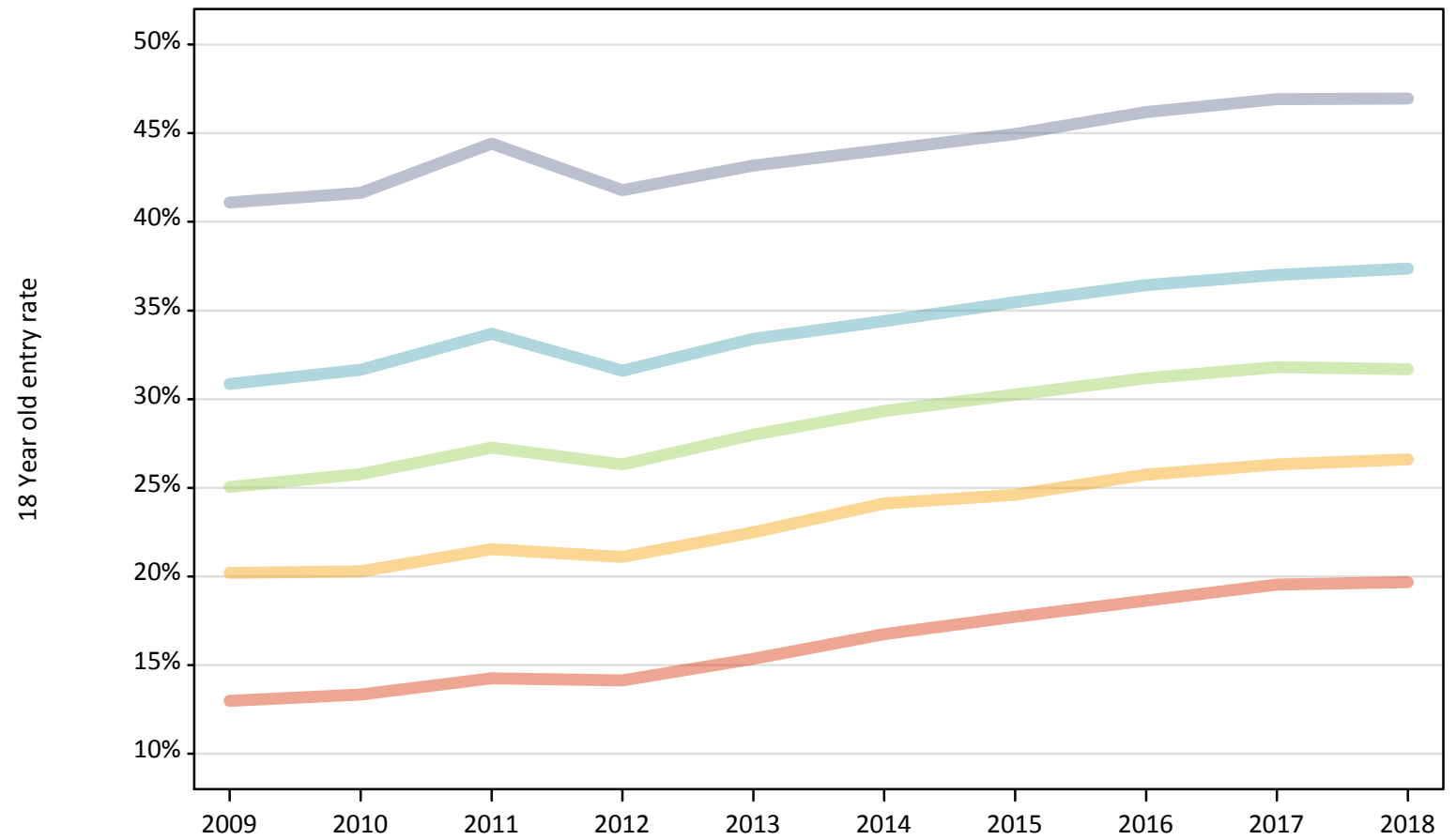
Applicant Status	POLAR4	2009	2010	2011	2012	2013	2014	2015	2016	2017	2018
Placed	Quintile 1	-25%	-24%	-21%	-22%	-17%	-10%	-4%	-3%	0%	-2%
	Quintile 2	-16%	-16%	-14%	-15%	-12%	-6%	-3%	-0%	0%	-2%
	Quintile 3	-15%	-13%	-11%	-14%	-10%	-7%	-2%	-1%	0%	-3%
	Quintile 4	-12%	-12%	-8%	-12%	-9%	-7%	-2%	-1%	0%	-1%
	Quintile 5	-11%	-11%	-7%	-10%	-8%	-8%	-3%	-1%	0%	-1%

Note: The percentage change is not recorded in the above table for groups with fewer than 10 placed applicants in that cycle or in the 2017 cycle.

P.4 Placed 18 year old applicants from England by POLAR4 quintile: 15 days after A level results day

Placed 18 year old applicants: entry rate

- Quintile 1
- Quintile 2
- Quintile 3
- Quintile 4
- Quintile 5



P.5 Placed 18 year old applicants from England by POLAR4 quintile: 15 days after A level results day

Placed 18 year old applicants: entry rate

Applicant Status	POLAR4	2009	2010	2011	2012	2013	2014	2015	2016	2017	2018
Placed	Quintile 1	13.0%	13.3%	14.3%	14.1%	15.3%	16.7%	17.7%	18.6%	19.5%	19.7%
	Quintile 2	20.2%	20.3%	21.5%	21.1%	22.5%	24.1%	24.6%	25.7%	26.3%	26.6%
	Quintile 3	25.0%	25.8%	27.3%	26.3%	28.0%	29.3%	30.3%	31.2%	31.8%	31.7%
	Quintile 4	30.9%	31.7%	33.7%	31.6%	33.4%	34.4%	35.5%	36.4%	37.0%	37.4%
	Quintile 5	41.1%	41.6%	44.4%	41.8%	43.2%	44.1%	45.0%	46.2%	46.9%	46.9%

P.6 Placed 18 year old applicants from England by POLAR4 quintile: 15 days after A level results day

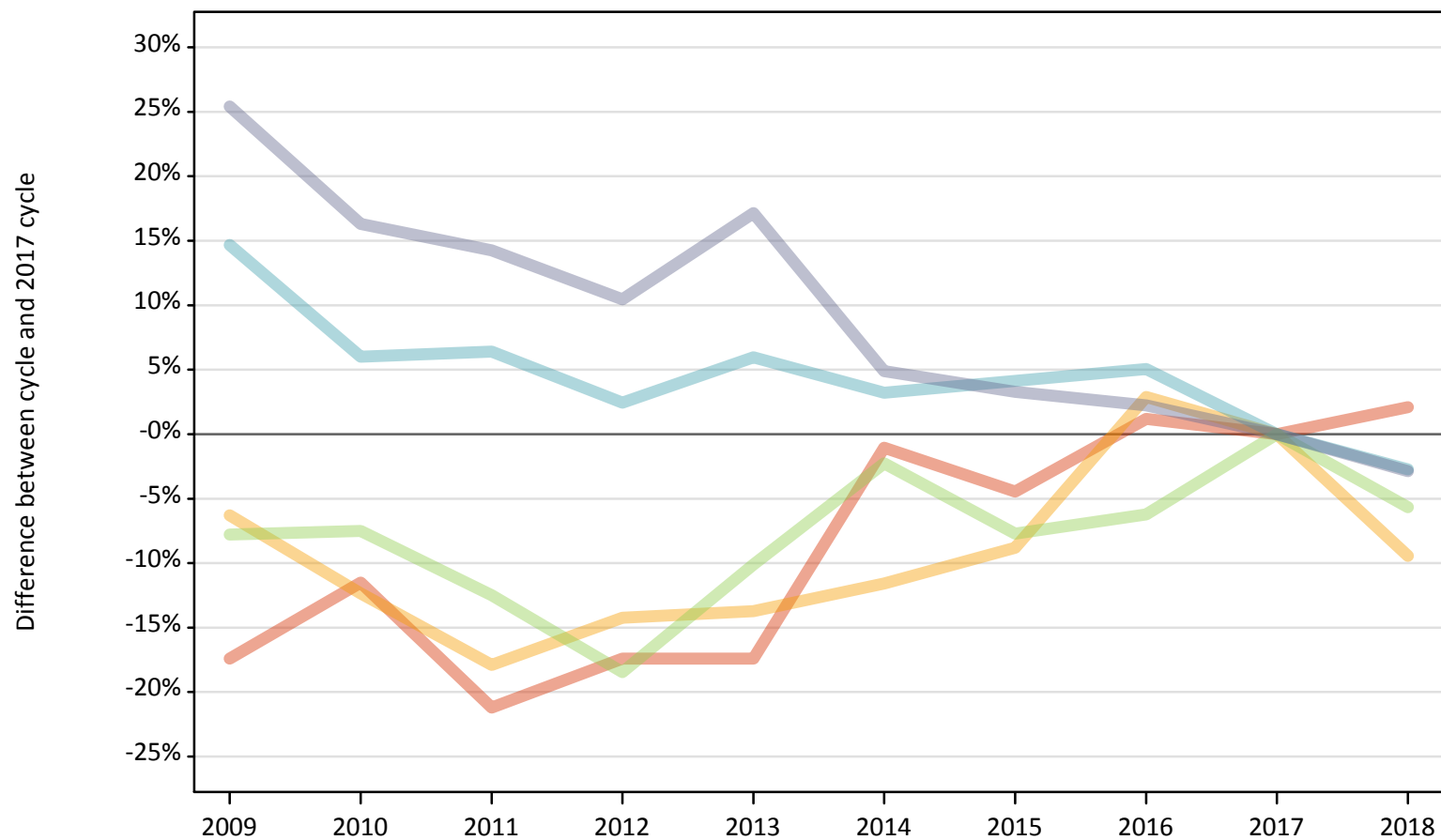
Placed 18 year old applicants: entry rate (indexed to 100 = Quintile 1)

Applicant Status	POLAR4	2009	2010	2011	2012	2013	2014	2015	2016	2017	2018
Placed	Quintile 1	100	100	100	100	100	100	100	100	100	100
	Quintile 2	156	152	151	149	147	144	139	138	135	135
	Quintile 3	193	193	191	186	182	175	171	167	163	161
	Quintile 4	238	237	236	224	218	206	200	196	189	190
	Quintile 5	317	312	312	296	281	263	254	248	240	239

P.7 Placed 18 year old applicants from Northern Ireland by POLAR4 quintile: 15 days after A level results day

Placed 18 year old applicants: change relative to 2017 cycle totals

- Quintile 1
- Quintile 2
- Quintile 3
- Quintile 4
- Quintile 5



Note: The percentage change is not plotted in the above chart for groups with fewer than 30 placed applicants in any one cycle.

P.8 Placed 18 year old applicants from Northern Ireland by POLAR4 quintile: 15 days after A level results day

Applicant Status	POLAR4	2009	2010	2011	2012	2013	2014	2015	2016	2017	2018
Placed	Quintile 1	630	680	600	630	630	760	730	770	760	780
	Quintile 2	740	700	650	680	690	700	720	820	790	720
	Quintile 3	1,350	1,350	1,280	1,190	1,320	1,430	1,350	1,370	1,460	1,380
	Quintile 4	2,400	2,220	2,230	2,140	2,220	2,160	2,180	2,200	2,090	2,040
	Quintile 5	4,190	3,890	3,820	3,690	3,910	3,500	3,450	3,420	3,340	3,240

P.9 Placed 18 year old applicants from Northern Ireland by POLAR4 quintile: 15 days after A level results day

Placed 18 year old applicants: change relative to 2017 cycle totals

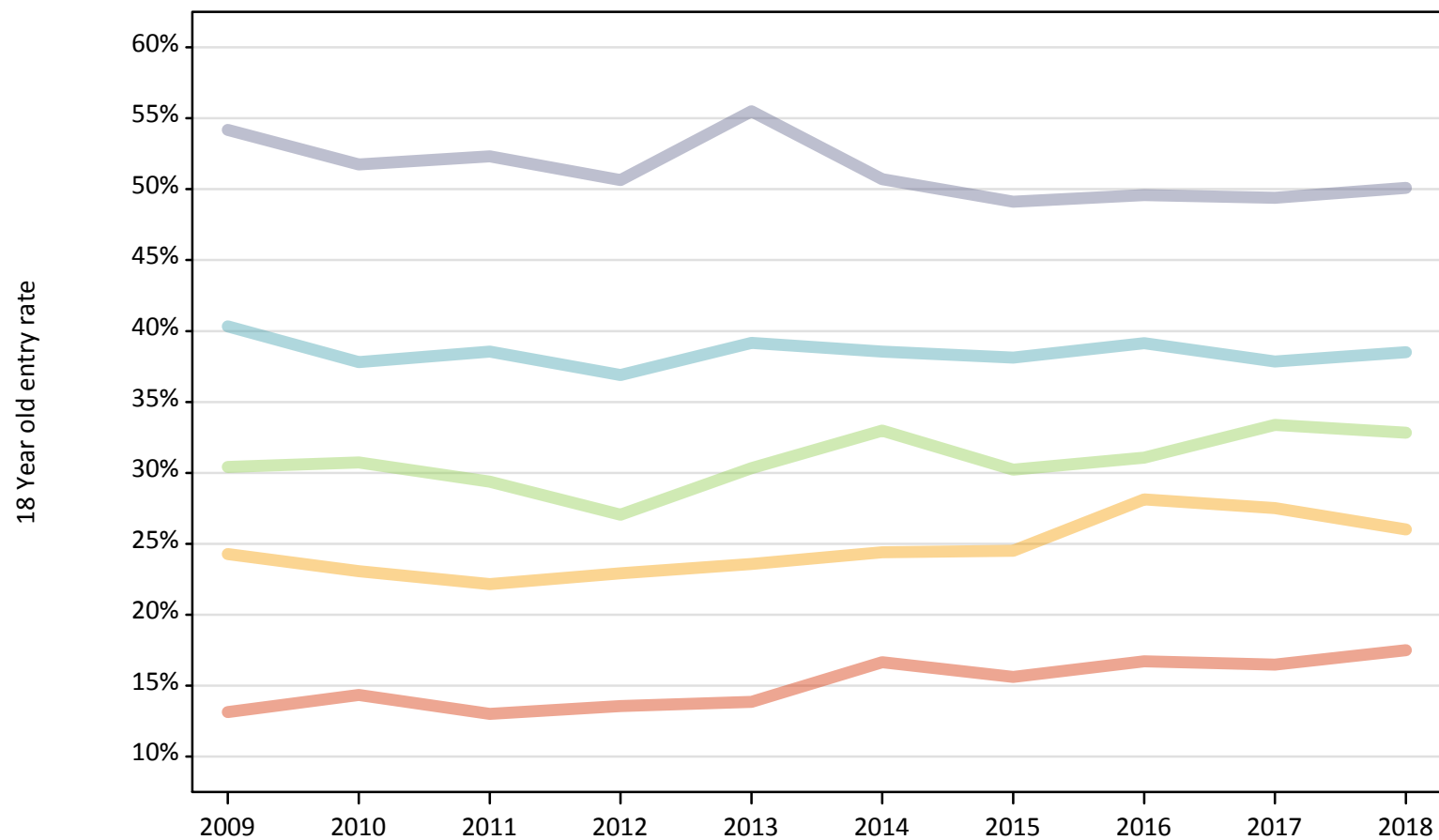
Applicant Status	POLAR4	2009	2010	2011	2012	2013	2014	2015	2016	2017	2018
Placed	Quintile 1	-17%	-12%	-21%	-17%	-17%	-1%	-4%	1%	0%	2%
	Quintile 2	-6%	-12%	-18%	-14%	-14%	-12%	-9%	3%	0%	-9%
	Quintile 3	-8%	-8%	-13%	-18%	-10%	-2%	-8%	-6%	0%	-6%
	Quintile 4	15%	6%	6%	2%	6%	3%	4%	5%	0%	-3%
	Quintile 5	25%	16%	14%	10%	17%	5%	3%	2%	0%	-3%

Note: The percentage change is not recorded in the above table for groups with fewer than 10 placed applicants in that cycle or in the 2017 cycle.

P.10 Placed 18 year old applicants from Northern Ireland by POLAR4 quintile: 15 days after A level results day

Placed 18 year old applicants: entry rate

- Quintile 1
- Quintile 2
- Quintile 3
- Quintile 4
- Quintile 5



P.11 Placed 18 year old applicants from Northern Ireland by POLAR4 quintile: 15 days after A level results day

Placed 18 year old applicants: entry rate

Applicant Status	POLAR4	2009	2010	2011	2012	2013	2014	2015	2016	2017	2018
Placed	Quintile 1	13.1%	14.3%	13.0%	13.6%	13.9%	16.6%	15.6%	16.7%	16.5%	17.5%
	Quintile 2	24.3%	23.1%	22.2%	22.9%	23.6%	24.4%	24.5%	28.1%	27.5%	26.0%
	Quintile 3	30.4%	30.7%	29.4%	27.0%	30.3%	33.0%	30.2%	31.1%	33.4%	32.8%
	Quintile 4	40.3%	37.8%	38.5%	36.9%	39.2%	38.5%	38.1%	39.1%	37.8%	38.5%
	Quintile 5	54.2%	51.7%	52.3%	50.7%	55.5%	50.7%	49.1%	49.6%	49.4%	50.1%

P.12 Placed 18 year old applicants from Northern Ireland by POLAR4 quintile: 15 days after A level results day

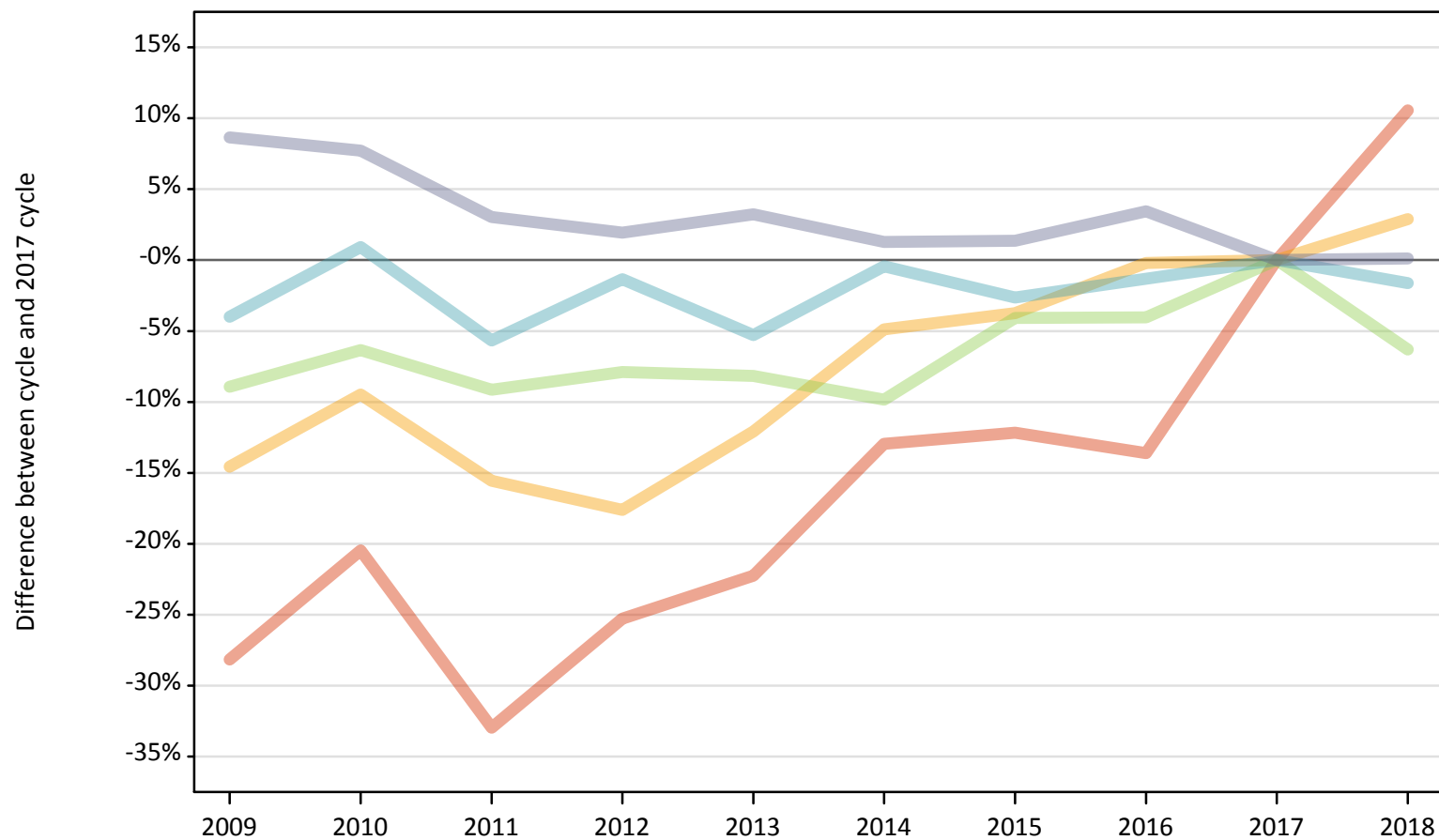
Placed 18 year old applicants: entry rate (indexed to 100 = Quintile 1)

Applicant Status	POLAR4	2009	2010	2011	2012	2013	2014	2015	2016	2017	2018
Placed	Quintile 1	100	100	100	100	100	100	100	100	100	100
	Quintile 2	185	161	170	169	170	147	157	168	167	149
	Quintile 3	232	214	226	199	219	198	194	186	203	188
	Quintile 4	307	263	296	272	282	231	244	234	230	220
	Quintile 5	413	361	402	374	400	305	314	297	300	286

P.13 Placed 18 year old applicants from Scotland by POLAR4 quintile: 15 days after A level results day

Placed 18 year old applicants: change relative to 2017 cycle totals

- Quintile 1
- Quintile 2
- Quintile 3
- Quintile 4
- Quintile 5



Note: The percentage change is not plotted in the above chart for groups with fewer than 30 placed applicants in any one cycle.

P.14 Placed 18 year old applicants from Scotland by POLAR4 quintile: 15 days after A level results day

Applicant Status	POLAR4	2009	2010	2011	2012	2013	2014	2015	2016	2017	2018
Placed	Quintile 1	450	500	420	470	490	540	550	540	630	690
	Quintile 2	1,210	1,280	1,190	1,170	1,240	1,350	1,360	1,410	1,410	1,460
	Quintile 3	2,180	2,250	2,180	2,210	2,200	2,160	2,300	2,300	2,400	2,250
	Quintile 4	3,270	3,430	3,210	3,360	3,220	3,390	3,310	3,360	3,400	3,350
	Quintile 5	7,360	7,290	6,980	6,900	6,990	6,860	6,860	7,000	6,770	6,780

P.15 Placed 18 year old applicants from Scotland by POLAR4 quintile: 15 days after A level results day

Placed 18 year old applicants: change relative to 2017 cycle totals

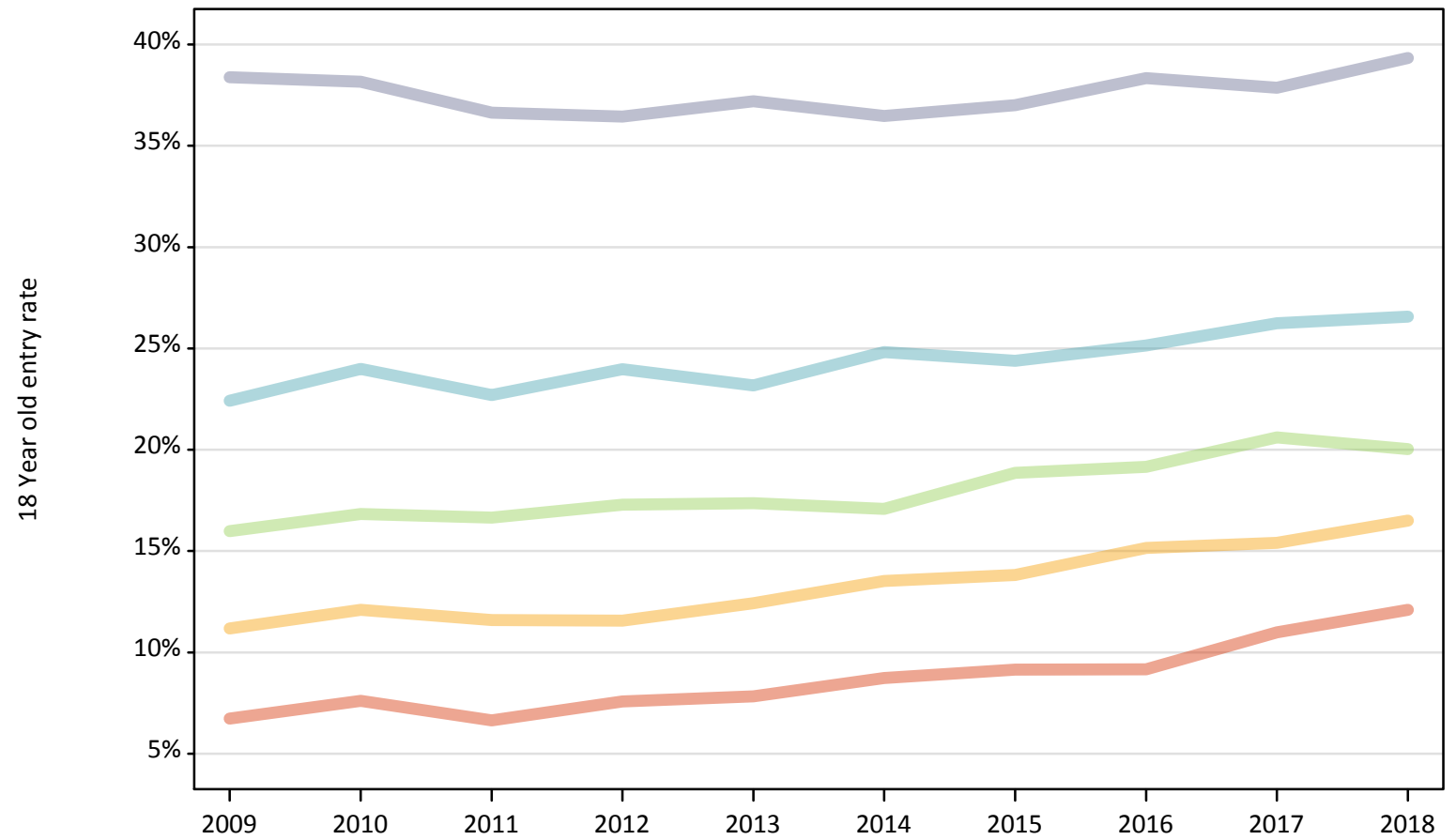
Applicant Status	POLAR4	2009	2010	2011	2012	2013	2014	2015	2016	2017	2018
Placed	Quintile 1	-28%	-20%	-33%	-25%	-22%	-13%	-12%	-14%	0%	11%
	Quintile 2	-15%	-9%	-16%	-18%	-12%	-5%	-4%	-0%	0%	3%
	Quintile 3	-9%	-6%	-9%	-8%	-8%	-10%	-4%	-4%	0%	-6%
	Quintile 4	-4%	1%	-6%	-1%	-5%	-0%	-3%	-1%	0%	-2%
	Quintile 5	9%	8%	3%	2%	3%	1%	1%	3%	0%	0%

Note: The percentage change is not recorded in the above table for groups with fewer than 10 placed applicants in that cycle or in the 2017 cycle.

P.16 Placed 18 year old applicants from Scotland by POLAR4 quintile: 15 days after A level results day

Placed 18 year old applicants: entry rate

- Quintile 1
- Quintile 2
- Quintile 3
- Quintile 4
- Quintile 5



P.17 Placed 18 year old applicants from Scotland by POLAR4 quintile: 15 days after A level results day

Placed 18 year old applicants: entry rate

Applicant Status	POLAR4	2009	2010	2011	2012	2013	2014	2015	2016	2017	2018
Placed	Quintile 1	6.7%	7.6%	6.6%	7.6%	7.8%	8.7%	9.1%	9.2%	11.0%	12.1%
	Quintile 2	11.2%	12.1%	11.6%	11.6%	12.4%	13.5%	13.8%	15.2%	15.4%	16.5%
	Quintile 3	16.0%	16.8%	16.7%	17.3%	17.4%	17.1%	18.9%	19.2%	20.6%	20.0%
	Quintile 4	22.4%	24.0%	22.7%	24.0%	23.2%	24.8%	24.4%	25.1%	26.2%	26.6%
	Quintile 5	38.4%	38.2%	36.6%	36.4%	37.2%	36.5%	37.0%	38.3%	37.9%	39.3%

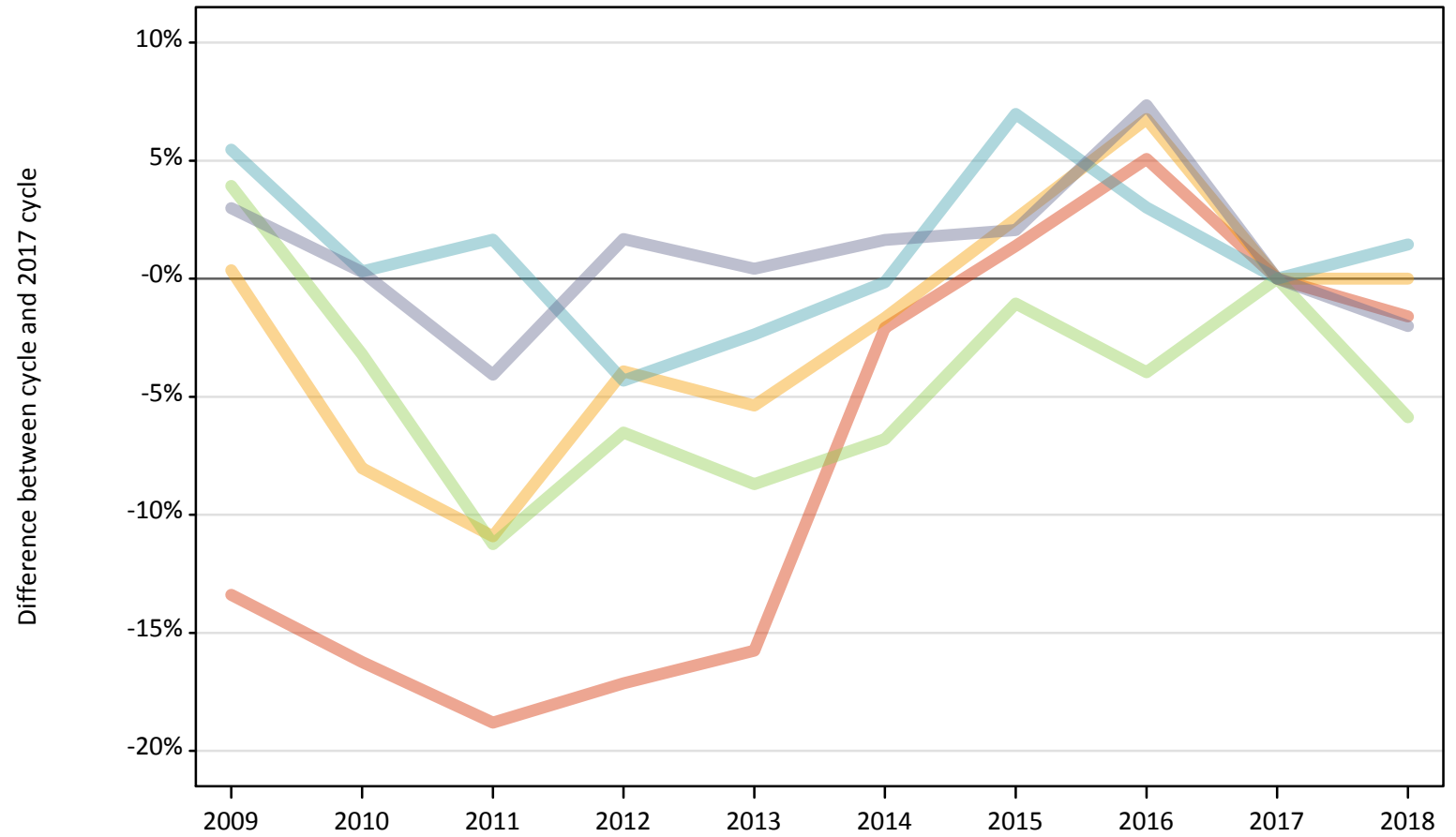
P.18 Placed 18 year old applicants from Scotland by POLAR4 quintile: 15 days after A level results day

Placed 18 year old applicants: entry rate (indexed to 100 = Quintile 1)

Applicant Status	POLAR4	2009	2010	2011	2012	2013	2014	2015	2016	2017	2018
Placed	Quintile 1	100	100	100	100	100	100	100	100	100	100
	Quintile 2	166	159	175	152	159	155	151	165	140	136
	Quintile 3	238	221	251	228	222	196	206	209	188	166
	Quintile 4	333	315	342	316	296	284	267	274	239	220
	Quintile 5	570	502	551	481	475	418	405	418	345	325

P.19 Placed 18 year old applicants from Wales by POLAR4 quintile: 15 days after A level results day
Placed 18 year old applicants: change relative to 2017 cycle totals

- Quintile 1
- Quintile 2
- Quintile 3
- Quintile 4
- Quintile 5



Note: The percentage change is not plotted in the above chart for groups with fewer than 30 placed applicants in any one cycle.

P.20 Placed 18 year old applicants from Wales by POLAR4 quintile: 15 days after A level results day

Applicant Status	POLAR4	2009	2010	2011	2012	2013	2014	2015	2016	2017	2018
Placed	Quintile 1	1,250	1,210	1,170	1,190	1,210	1,410	1,460	1,510	1,440	1,420
	Quintile 2	2,230	2,040	1,980	2,130	2,100	2,180	2,270	2,370	2,220	2,220
	Quintile 3	2,570	2,390	2,190	2,310	2,260	2,300	2,450	2,370	2,470	2,330
	Quintile 4	2,100	2,000	2,030	1,910	1,950	1,990	2,130	2,050	1,990	2,020
	Quintile 5	2,200	2,140	2,050	2,170	2,150	2,170	2,180	2,300	2,140	2,100

P.21 Placed 18 year old applicants from Wales by POLAR4 quintile: 15 days after A level results day

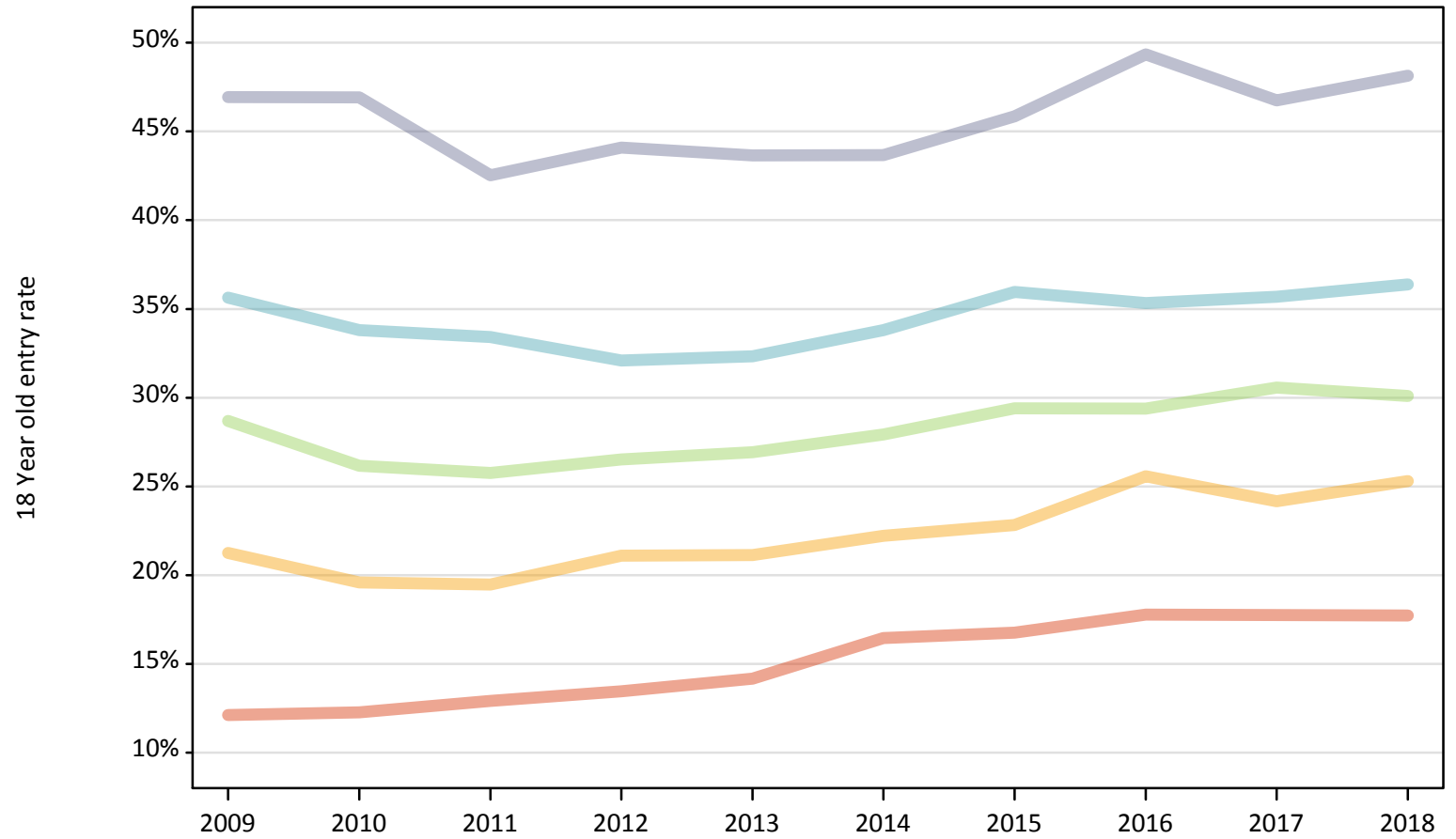
Placed 18 year old applicants: change relative to 2017 cycle totals

Applicant Status	POLAR4	2009	2010	2011	2012	2013	2014	2015	2016	2017	2018
Placed	Quintile 1	-13%	-16%	-19%	-17%	-16%	-2%	1%	5%	0%	-2%
	Quintile 2	0%	-8%	-11%	-4%	-5%	-2%	3%	7%	0%	0%
	Quintile 3	4%	-3%	-11%	-7%	-9%	-7%	-1%	-4%	0%	-6%
	Quintile 4	5%	0%	2%	-4%	-2%	-0%	7%	3%	0%	1%
	Quintile 5	3%	0%	-4%	2%	0%	2%	2%	7%	0%	-2%

Note: The percentage change is not recorded in the above table for groups with fewer than 10 placed applicants in that cycle or in the 2017 cycle.

P.22 Placed 18 year old applicants from Wales by POLAR4 quintile: 15 days after A level results day
Placed 18 year old applicants: entry rate

- Quintile 1
- Quintile 2
- Quintile 3
- Quintile 4
- Quintile 5



P.23 Placed 18 year old applicants from Wales by POLAR4 quintile: 15 days after A level results day

Placed 18 year old applicants: entry rate

Applicant Status	POLAR4	2009	2010	2011	2012	2013	2014	2015	2016	2017	2018
Placed	Quintile 1	12.1%	12.3%	12.9%	13.4%	14.2%	16.4%	16.8%	17.8%	17.8%	17.7%
	Quintile 2	21.2%	19.6%	19.5%	21.1%	21.1%	22.2%	22.8%	25.6%	24.2%	25.3%
	Quintile 3	28.7%	26.2%	25.8%	26.5%	26.9%	27.9%	29.4%	29.4%	30.6%	30.1%
	Quintile 4	35.6%	33.8%	33.4%	32.1%	32.3%	33.8%	36.0%	35.3%	35.7%	36.4%
	Quintile 5	46.9%	46.9%	42.5%	44.1%	43.6%	43.7%	45.9%	49.3%	46.8%	48.1%

P.24 Placed 18 year old applicants from Wales by POLAR4 quintile: 15 days after A level results day

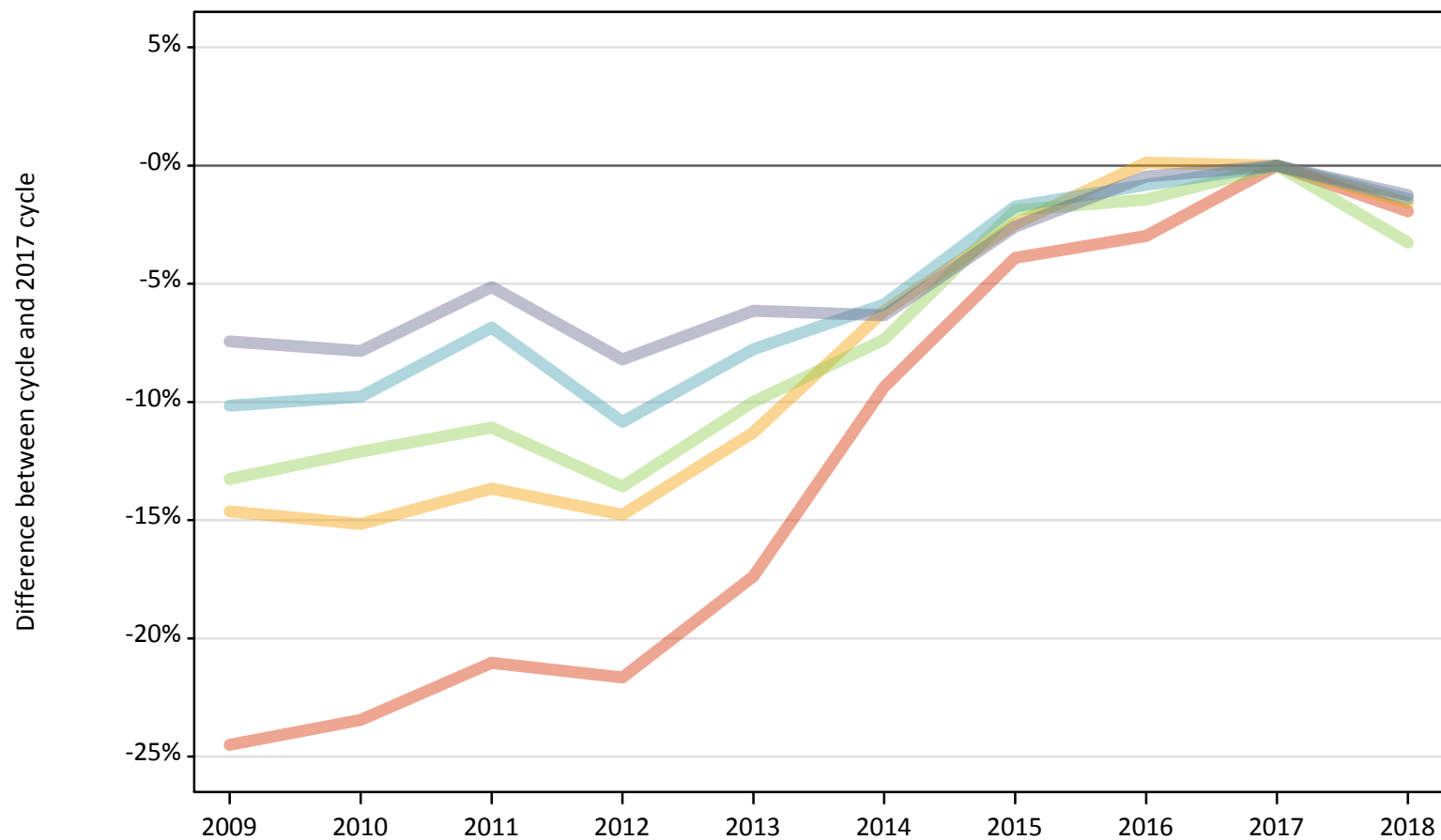
Placed 18 year old applicants: entry rate (indexed to 100 = Quintile 1)

Applicant Status	POLAR4	2009	2010	2011	2012	2013	2014	2015	2016	2017	2018
Placed	Quintile 1	100	100	100	100	100	100	100	100	100	100
	Quintile 2	175	160	151	157	149	135	136	144	136	143
	Quintile 3	237	213	199	197	190	170	175	165	172	170
	Quintile 4	294	275	259	239	228	206	215	199	201	205
	Quintile 5	388	382	329	328	308	265	274	278	263	272

P.25 Placed 18 year old applicants from the UK by POLAR4 quintile: 15 days after A level results day

Placed 18 year old applicants: change relative to 2017 cycle totals

- Quintile 1
- Quintile 2
- Quintile 3
- Quintile 4
- Quintile 5



Note: The percentage change is not plotted in the above chart for groups with fewer than 30 placed applicants in any one cycle.

P.26 Placed 18 year old applicants from the UK by POLAR4 quintile: 15 days after A level results day

Applicant Status	POLAR4	2009	2010	2011	2012	2013	2014	2015	2016	2017	2018
Placed	Quintile 1	19,160	19,430	20,040	19,880	20,970	23,000	24,390	24,630	25,380	24,890
	Quintile 2	30,350	30,160	30,690	30,300	31,530	33,360	34,670	35,590	35,550	34,990
	Quintile 3	38,830	39,350	39,810	38,690	40,300	41,480	43,930	44,130	44,770	43,310
	Quintile 4	48,980	49,190	50,790	48,600	50,280	51,310	53,570	54,070	54,520	53,750
	Quintile 5	73,140	72,810	74,960	72,530	74,160	74,020	76,970	78,660	79,020	78,030

P.27 Placed 18 year old applicants from the UK by POLAR4 quintile: 15 days after A level results day

Placed 18 year old applicants: change relative to 2017 cycle totals

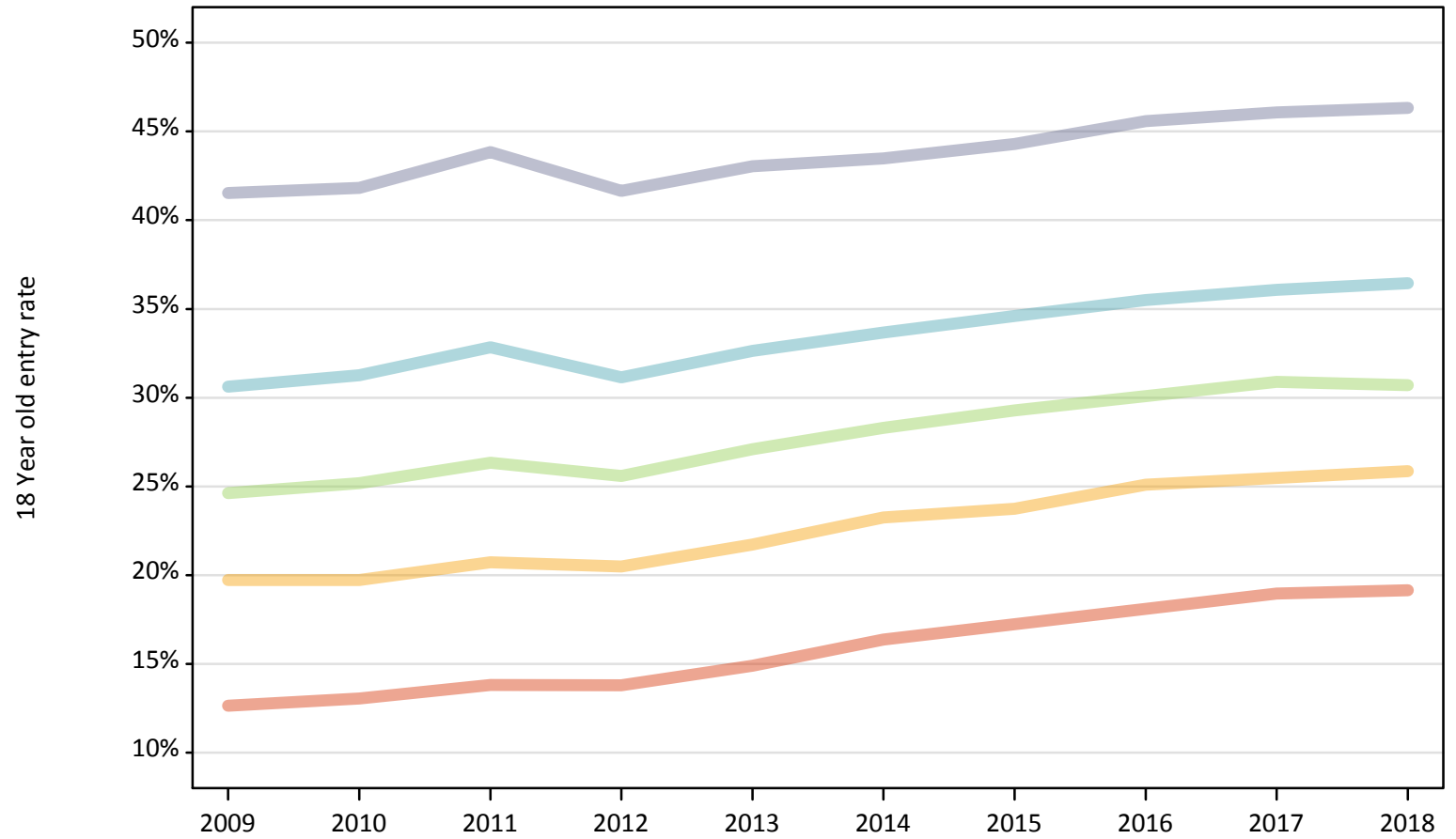
Applicant Status	POLAR4	2009	2010	2011	2012	2013	2014	2015	2016	2017	2018
Placed	Quintile 1	-24%	-23%	-21%	-22%	-17%	-9%	-4%	-3%	0%	-2%
	Quintile 2	-15%	-15%	-14%	-15%	-11%	-6%	-2%	0%	0%	-2%
	Quintile 3	-13%	-12%	-11%	-14%	-10%	-7%	-2%	-1%	0%	-3%
	Quintile 4	-10%	-10%	-7%	-11%	-8%	-6%	-2%	-1%	0%	-1%
	Quintile 5	-7%	-8%	-5%	-8%	-6%	-6%	-3%	-0%	0%	-1%

Note: The percentage change is not recorded in the above table for groups with fewer than 10 placed applicants in that cycle or in the 2017 cycle.

P.28 Placed 18 year old applicants from the UK by POLAR4 quintile: 15 days after A level results day

Placed 18 year old applicants: entry rate

- Quintile 1
- Quintile 2
- Quintile 3
- Quintile 4
- Quintile 5



P.29 Placed 18 year old applicants from the UK by POLAR4 quintile: 15 days after A level results day

Placed 18 year old applicants: entry rate

Applicant Status	POLAR4	2009	2010	2011	2012	2013	2014	2015	2016	2017	2018
Placed	Quintile 1	12.6%	13.0%	13.8%	13.8%	14.9%	16.4%	17.2%	18.1%	19.0%	19.1%
	Quintile 2	19.7%	19.7%	20.7%	20.5%	21.7%	23.3%	23.7%	25.1%	25.5%	25.9%
	Quintile 3	24.6%	25.2%	26.3%	25.6%	27.1%	28.3%	29.3%	30.1%	30.9%	30.7%
	Quintile 4	30.6%	31.3%	32.8%	31.1%	32.6%	33.7%	34.6%	35.5%	36.1%	36.4%
	Quintile 5	41.5%	41.8%	43.8%	41.6%	43.0%	43.5%	44.3%	45.6%	46.1%	46.3%

P.30 Placed 18 year old applicants from the UK by POLAR4 quintile: 15 days after A level results day

Placed 18 year old applicants: entry rate (indexed to 100 = Quintile 1)

Applicant Status	POLAR4	2009	2010	2011	2012	2013	2014	2015	2016	2017	2018
Placed	Quintile 1	100	100	100	100	100	100	100	100	100	100
	Quintile 2	156	151	150	149	146	142	138	139	134	135
	Quintile 3	195	193	191	186	182	173	170	166	163	160
	Quintile 4	242	240	238	226	219	206	201	196	190	190
	Quintile 5	328	321	318	302	289	266	257	252	243	242