

Daily Clearing Analysis: Age

Analysis at 00:05 on Friday 31 August 2018 (15 days after A level results day)

C.1 Placed applicants by country of domicile and age group, 2018 cycle (15 days after A level results day)

Domicile of applicant	Age group				
	17 and under	18	19	20 to 24	25 and over
England	690	203,400	68,060	48,660	29,820
Northern Ireland	30	8,190	2,400	2,450	820
Scotland	510	14,610	4,580	8,340	6,650
Wales	30	10,130	3,330	2,800	2,200
UK	1,250	236,330	78,370	62,240	39,480

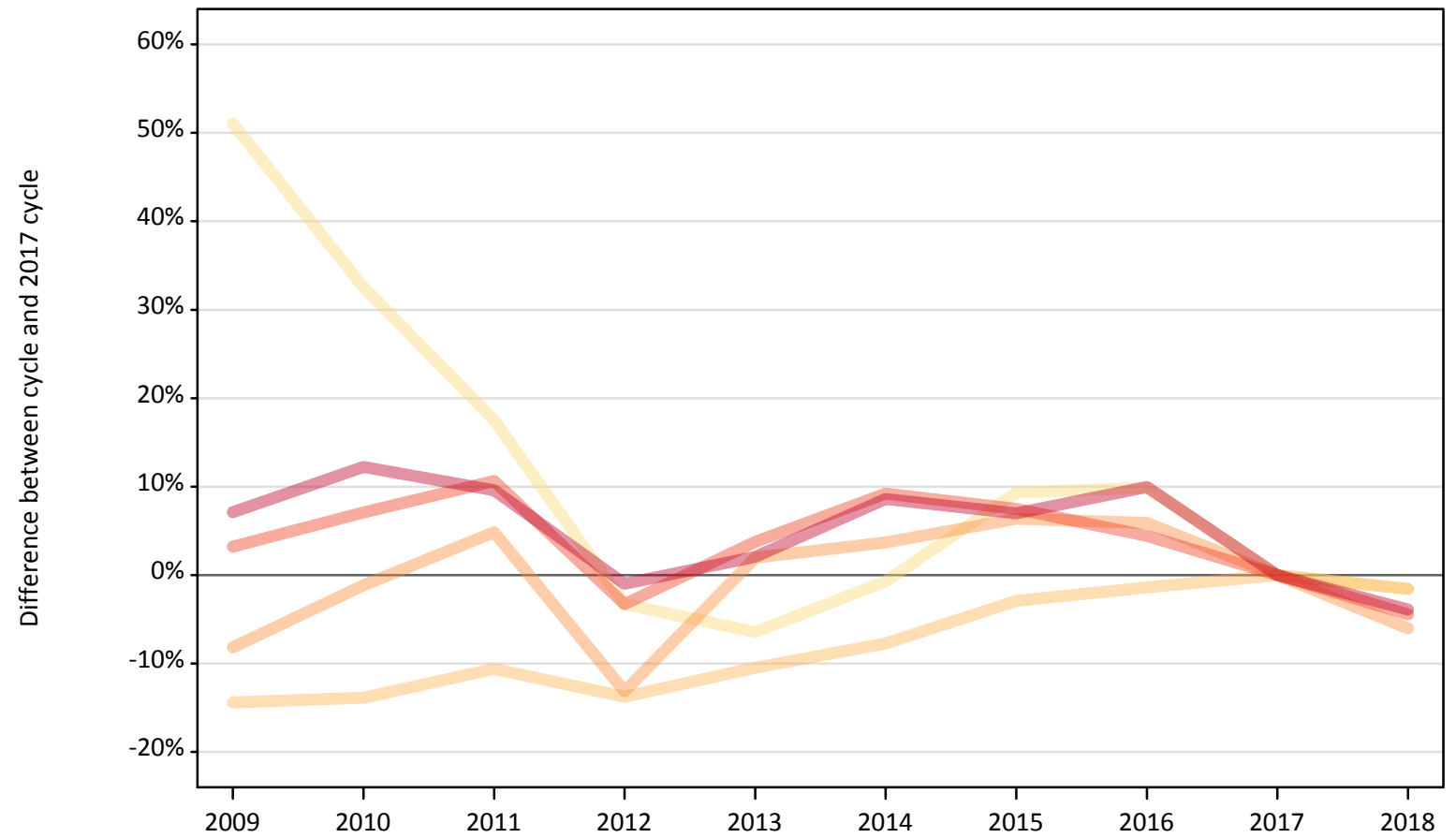
C.2 Proportion of 18 year old population placed by country of domicile, 2018 cycle (15 days after A level results day)

Domicile of applicant	Age group	2018
England	18	33.4%
Northern Ireland	18	35.3%
Scotland	18	26.3%
Wales	18	29.4%

C.3 Placed applicants from England by age group at 15 days after A level results day

Selected age groups: difference between cycle and 2017 cycle

- 17 and under
- 18
- 19
- 20 to 24
- 25 and over



Note: The percentage change is not plotted in the above chart for groups with fewer than 30 placed applicants in any one cycle.

C.4 Placed applicants from England by age group at 15 days after A level results day

All age groups

Domicile of applicant	Age group	2009	2010	2011	2012	2013	2014	2015	2016	2017	2018
England	17 and under	1,050	920	820	670	650	690	760	770	700	690
	18	176,830	177,960	184,660	178,170	184,970	190,600	200,590	203,730	206,610	203,400
	19	66,520	71,610	75,960	62,910	73,870	75,110	77,050	76,710	72,440	68,060
	20 to 24	52,560	54,530	56,340	49,240	52,840	55,620	54,730	53,190	50,920	48,660
	25 and over	33,240	34,820	34,000	30,720	31,680	33,700	33,200	34,120	31,030	29,820

C.5 Placed applicants from England by age group at 15 days after A level results day

Selected age groups: difference between cycle and 2017 cycle

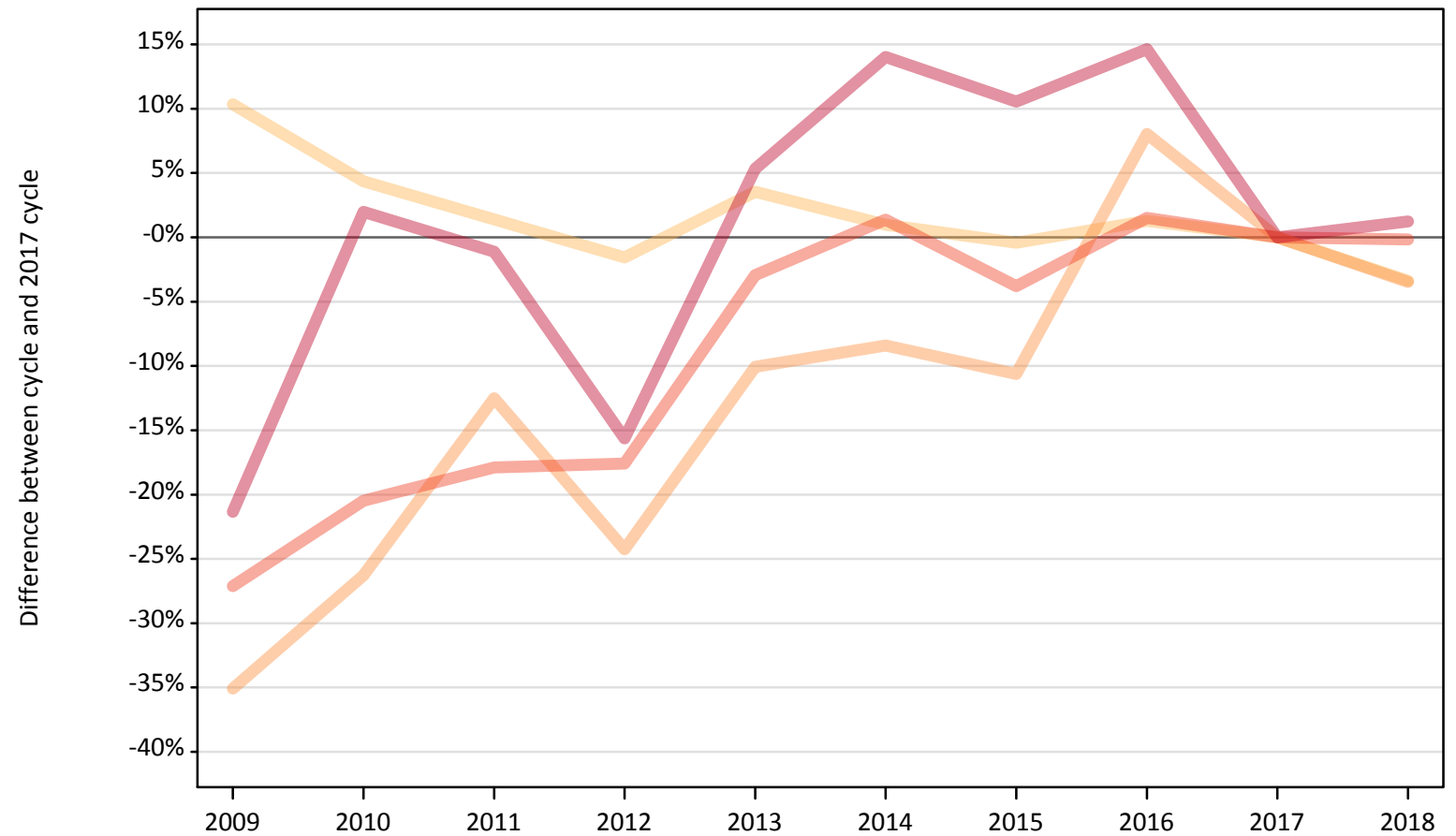
Domicile of applicant	Age group	2009	2010	2011	2012	2013	2014	2015	2016	2017	2018
England	17 and under	51%	33%	18%	-3%	-6%	-1%	9%	10%	0%	-2%
	18	-14%	-14%	-11%	-14%	-10%	-8%	-3%	-1%	0%	-2%
	19	-8%	-1%	5%	-13%	2%	4%	6%	6%	0%	-6%
	20 to 24	3%	7%	11%	-3%	4%	9%	7%	4%	0%	-4%
	25 and over	7%	12%	10%	-1%	2%	9%	7%	10%	0%	-4%

Note: The percentage change is not recorded in the above table for groups with fewer than 10 placed applicants in that cycle or in the 2017 cycle.

C.6 Placed applicants from Northern Ireland by age group at 15 days after A level results day

Selected age groups: difference between cycle and 2017 cycle

- 17 and under
- 18
- 19
- 20 to 24
- 25 and over



Note: The percentage change is not plotted in the above chart for groups with fewer than 30 placed applicants in any one cycle.

C.7 Placed applicants from Northern Ireland by age group at 15 days after A level results day

All age groups

Domicile of applicant	Age group	2009	2010	2011	2012	2013	2014	2015	2016	2017	2018
Northern Ireland	17 and under	50	40	40	40	20	20	20	30	20	30
	18	9,360	8,850	8,600	8,350	8,780	8,560	8,450	8,590	8,480	8,190
	19	1,610	1,830	2,180	1,880	2,240	2,280	2,220	2,690	2,490	2,400
	20 to 24	1,790	1,950	2,020	2,020	2,380	2,490	2,360	2,490	2,460	2,450
	25 and over	630	820	800	680	850	920	890	920	810	820

C.8 Placed applicants from Northern Ireland by age group at 15 days after A level results day

Selected age groups: difference between cycle and 2017 cycle

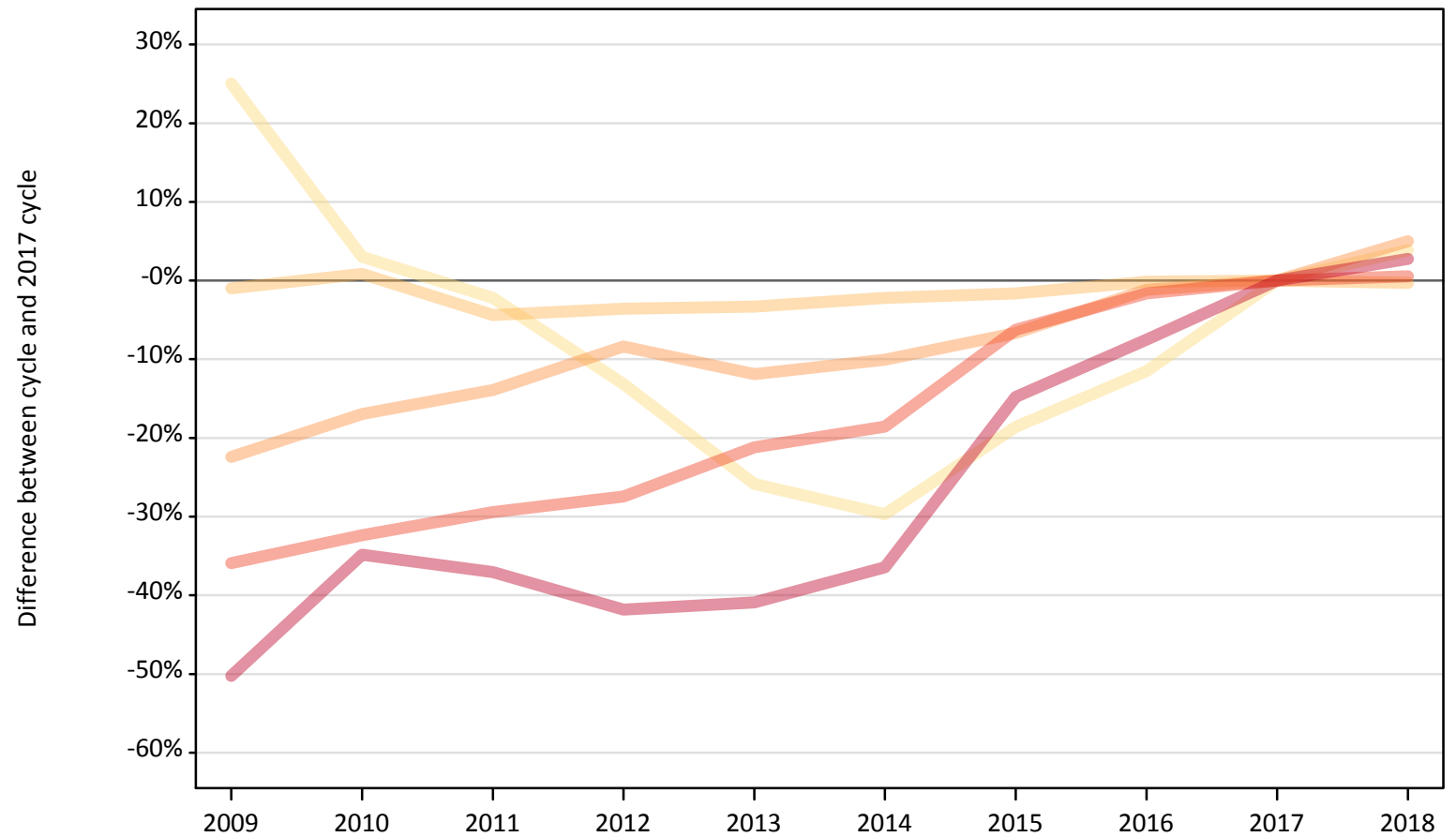
Domicile of applicant	Age group	2009	2010	2011	2012	2013	2014	2015	2016	2017	2018
Northern Ireland	17 and under	189%	117%	106%	133%	28%	17%	0%	67%	0%	44%
	18	10%	4%	1%	-2%	4%	1%	-0%	1%	0%	-3%
	19	-35%	-26%	-13%	-24%	-10%	-8%	-11%	8%	0%	-3%
	20 to 24	-27%	-20%	-18%	-18%	-3%	1%	-4%	2%	0%	-0%
	25 and over	-21%	2%	-1%	-16%	5%	14%	11%	15%	0%	1%

Note: The percentage change is not recorded in the above table for groups with fewer than 10 placed applicants in that cycle or in the 2017 cycle.

C.9 Placed applicants from Scotland by age group at 15 days after A level results day

Selected age groups: difference between cycle and 2017 cycle

- 17 and under
- 18
- 19
- 20 to 24
- 25 and over



Note: The percentage change is not plotted in the above chart for groups with fewer than 30 placed applicants in any one cycle.

C.10 Placed applicants from Scotland by age group at 15 days after A level results day

All age groups

Domicile of applicant	Age group	2009	2010	2011	2012	2013	2014	2015	2016	2017	2018
Scotland	17 and under	620	510	480	430	370	350	400	440	500	510
	18	14,510	14,780	14,020	14,130	14,170	14,330	14,420	14,640	14,660	14,610
	19	3,380	3,620	3,750	3,990	3,840	3,920	4,070	4,310	4,360	4,580
	20 to 24	5,320	5,610	5,850	6,020	6,540	6,760	7,780	8,160	8,290	8,340
	25 and over	3,220	4,220	4,070	3,770	3,820	4,110	5,510	5,980	6,470	6,650

C.11 Placed applicants from Scotland by age group at 15 days after A level results day

Selected age groups: difference between cycle and 2017 cycle

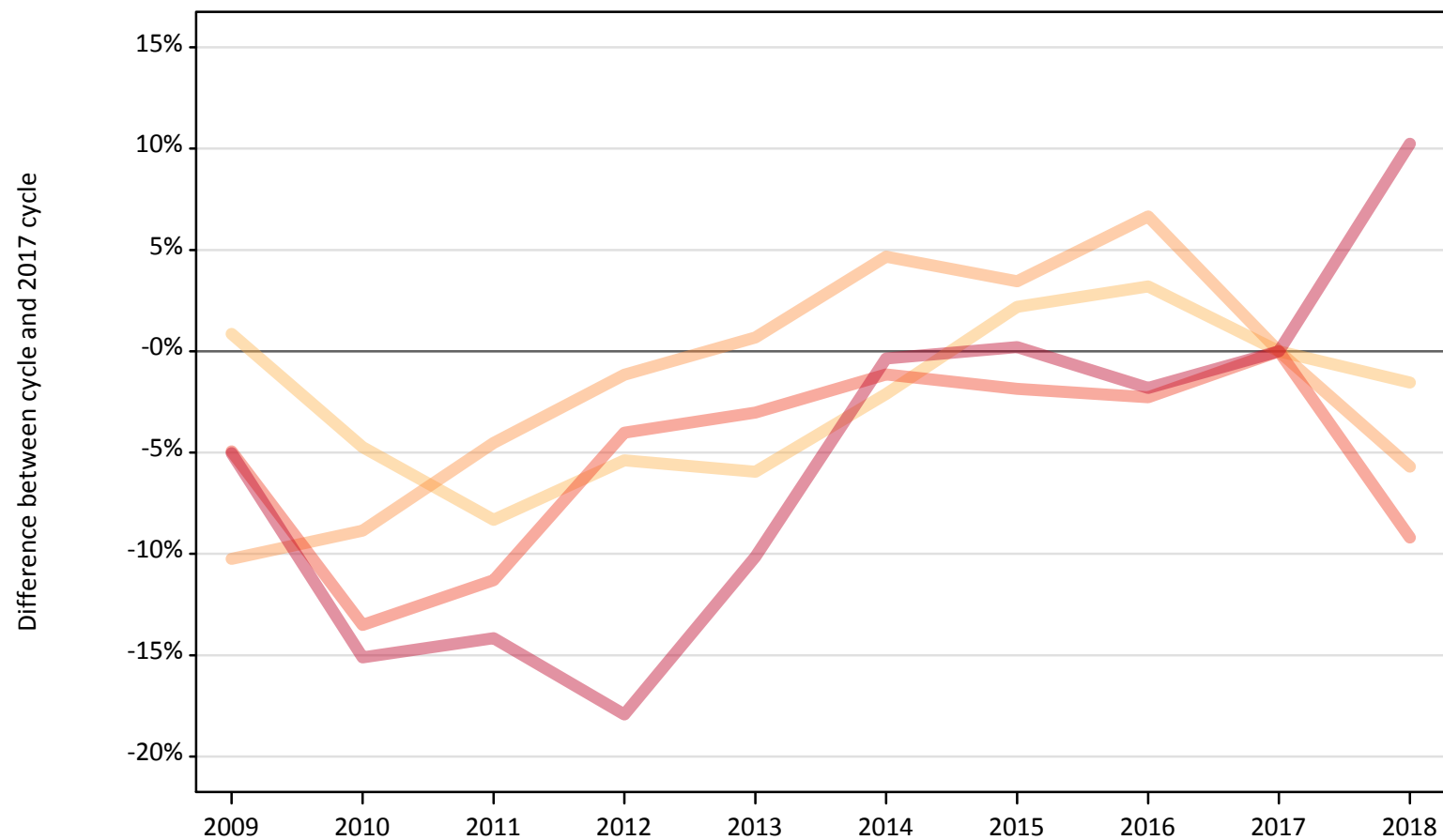
Domicile of applicant	Age group	2009	2010	2011	2012	2013	2014	2015	2016	2017	2018
Scotland	17 and under	25%	3%	-2%	-13%	-26%	-30%	-19%	-12%	0%	4%
	18	-1%	1%	-4%	-4%	-3%	-2%	-2%	-0%	0%	-0%
	19	-22%	-17%	-14%	-8%	-12%	-10%	-7%	-1%	0%	5%
	20 to 24	-36%	-32%	-29%	-27%	-21%	-19%	-6%	-2%	0%	1%
	25 and over	-50%	-35%	-37%	-42%	-41%	-36%	-15%	-7%	0%	3%

Note: The percentage change is not recorded in the above table for groups with fewer than 10 placed applicants in that cycle or in the 2017 cycle.

C.12 Placed applicants from Wales by age group at 15 days after A level results day

Selected age groups: difference between cycle and 2017 cycle

- 17 and under
- 18
- 19
- 20 to 24
- 25 and over



Note: The percentage change is not plotted in the above chart for groups with fewer than 30 placed applicants in any one cycle.

C.13 Placed applicants from Wales by age group at 15 days after A level results day

All age groups

Domicile of applicant	Age group	2009	2010	2011	2012	2013	2014	2015	2016	2017	2018
Wales	17 and under	40	40	30	20	30	20	20	20	20	30
	18	10,370	9,800	9,430	9,730	9,680	10,070	10,510	10,620	10,290	10,130
	19	3,170	3,220	3,370	3,490	3,560	3,700	3,660	3,770	3,530	3,330
	20 to 24	2,930	2,670	2,730	2,960	2,990	3,050	3,020	3,010	3,080	2,800
	25 and over	1,890	1,690	1,710	1,640	1,790	1,990	2,000	1,960	1,990	2,200

C.14 Placed applicants from Wales by age group at 15 days after A level results day

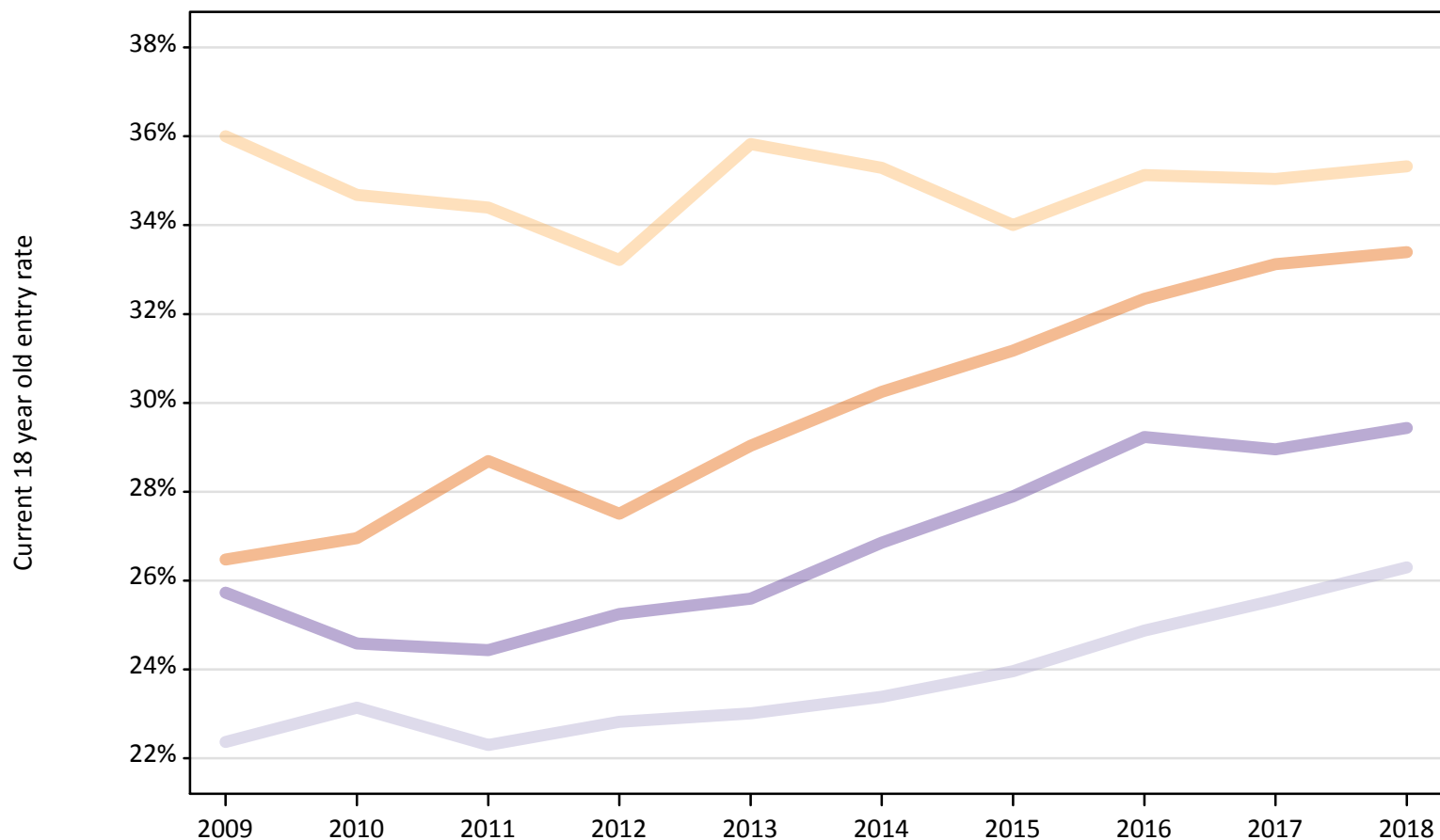
Selected age groups: difference between cycle and 2017 cycle

Domicile of applicant	Age group	2009	2010	2011	2012	2013	2014	2015	2016	2017	2018
Wales	17 and under	144%	94%	83%	22%	67%	22%	0%	28%	0%	39%
	18	1%	-5%	-8%	-5%	-6%	-2%	2%	3%	0%	-2%
	19	-10%	-9%	-5%	-1%	1%	5%	3%	7%	0%	-6%
	20 to 24	-5%	-14%	-11%	-4%	-3%	-1%	-2%	-2%	0%	-9%
	25 and over	-5%	-15%	-14%	-18%	-10%	-0%	0%	-2%	0%	10%

Note: The percentage change is not recorded in the above table for groups with fewer than 10 placed applicants in that cycle or in the 2017 cycle.

C.15 Entry rates for 18 year olds by UK country of domicile: 15 days after A level results day

Placed 18 year old applicants as a proportion of the 18 year old population



C.16 Entry rates for 18 year olds by UK country of domicile: 15 days after A level results day

Placed 18 year old applicants as a proportion of the 18 year old population

Domicile of applicant	Age group	2009	2010	2011	2012	2013	2014	2015	2016	2017	2018
England	18	26.5%	27.0%	28.7%	27.5%	29.0%	30.2%	31.2%	32.3%	33.1%	33.4%
Northern Ireland	18	36.0%	34.7%	34.4%	33.2%	35.8%	35.3%	34.0%	35.1%	35.0%	35.3%
Scotland	18	22.4%	23.1%	22.3%	22.8%	23.0%	23.4%	24.0%	24.9%	25.6%	26.3%
Wales	18	25.7%	24.6%	24.4%	25.2%	25.6%	26.9%	27.9%	29.2%	29.0%	29.4%