

Daily Clearing Analysis: Age

B7 Nursing analysis at 00:05 on Thursday 30 August 2018 (14 days after A level results day)

CB.1 Placed applicants to nursing by country of domicile and age group, 2018 cycle (14 days after A level results day)

Domicile of applicant	Age group				
	17 and under	18	19	20 to 24	25 and over
England	10	4,670	2,250	4,290	7,510
Northern Ireland	0	340	180	270	240
Scotland	20	570	310	800	1,520
Wales	0	350	180	420	680
UK	20	5,930	2,930	5,770	9,950

CB.2 Proportion of 18 year old population placed to nursing by country of domicile, 2018 cycle (14 days after A level results day)

Domicile of applicant	Age group	2018
England	18	0.8%
Northern Ireland	18	1.5%
Scotland	18	1.0%
Wales	18	1.0%

CB.3 Placed applicants to nursing from England by age group at 14 days after A level results day

Selected age groups: difference between cycle and 2017 cycle

- 17 and under
- 18
- 19
- 20 to 24
- 25 and over



Note: The percentage change is not plotted in the above chart for groups with fewer than 30 placed applicants in any one cycle.

CB.4 Placed applicants to nursing from England by age group at 14 days after A level results day

All age groups

Domicile of applicant	Age group	2009	2010	2011	2012	2013	2014	2015	2016	2017	2018
England	17 and under	160	80	30	0	0	10	0	0	10	10
	18	4,380	4,030	3,610	3,800	3,550	3,760	3,910	4,030	4,410	4,670
	19	2,220	2,140	2,060	1,940	2,210	2,450	2,390	2,510	2,480	2,250
	20 to 24	5,010	5,040	4,420	4,530	4,770	5,420	5,310	5,210	4,670	4,290
	25 and over	7,990	8,250	7,110	7,050	6,960	7,870	7,870	8,850	7,820	7,510

CB.5 Placed applicants to nursing from England by age group at 14 days after A level results day

Selected age groups: difference between cycle and 2017 cycle

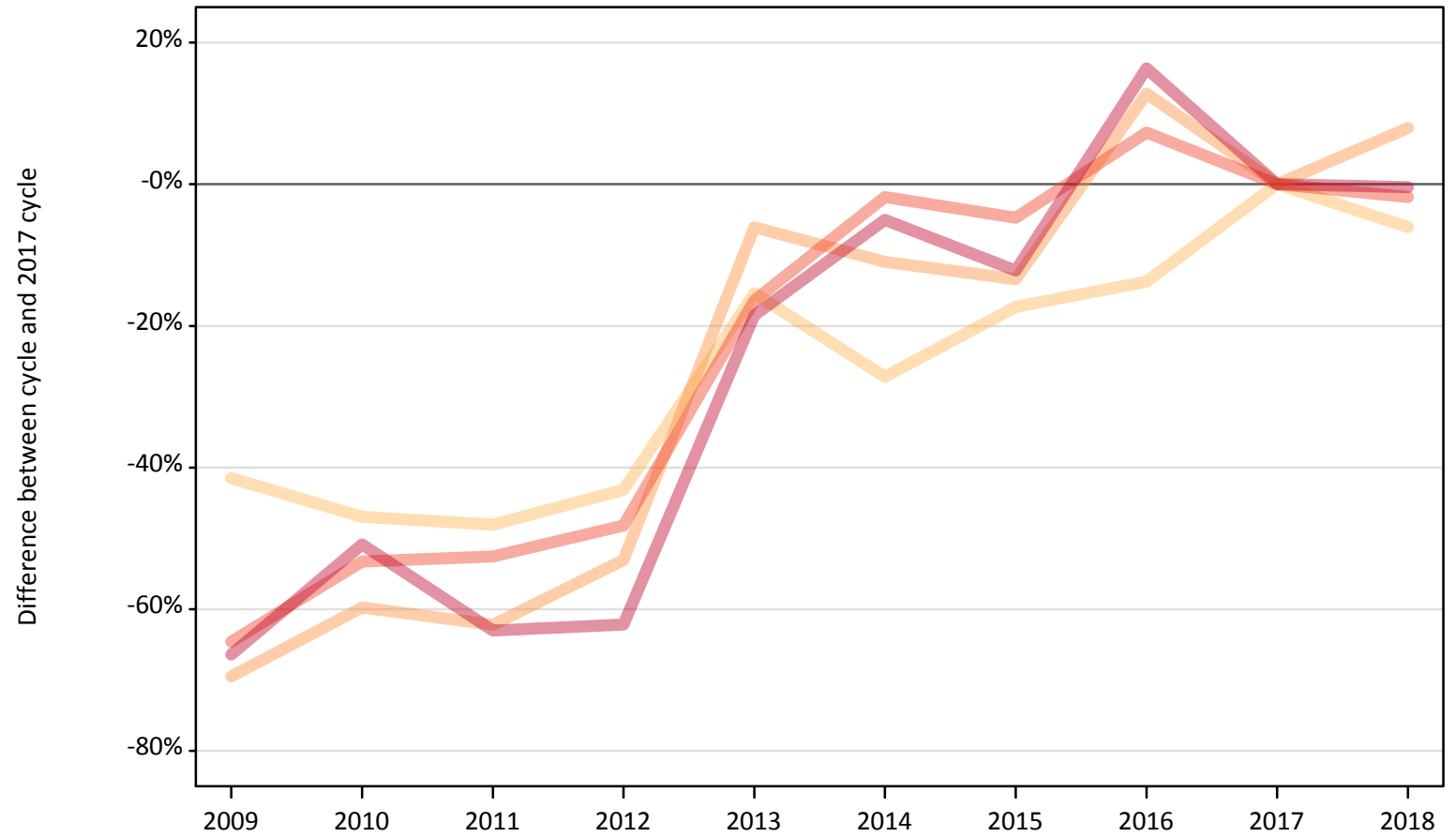
Domicile of applicant	Age group	2009	2010	2011	2012	2013	2014	2015	2016	2017	2018
England	17 and under	2533%	1250%	333%			-17%			0%	-17%
	18	-1%	-9%	-18%	-14%	-20%	-15%	-11%	-9%	0%	6%
	19	-11%	-14%	-17%	-22%	-11%	-1%	-4%	1%	0%	-9%
	20 to 24	7%	8%	-5%	-3%	2%	16%	14%	12%	0%	-8%
	25 and over	2%	6%	-9%	-10%	-11%	1%	1%	13%	0%	-4%

Note: The percentage change is not recorded in the above table for groups with fewer than 10 placed applicants in that cycle or in the 2017 cycle.

CB.6 Placed applicants to nursing from Northern Ireland by age group at 14 days after A level results day

Selected age groups: difference between cycle and 2017 cycle

- 17 and under
- 18
- 19
- 20 to 24
- 25 and over



Note: The percentage change is not plotted in the above chart for groups with fewer than 30 placed applicants in any one cycle.

CB.7 Placed applicants to nursing from Northern Ireland by age group at 14 days after A level results day

All age groups

Domicile of applicant	Age group	2009	2010	2011	2012	2013	2014	2015	2016	2017	2018
Northern Ireland	17 and under	0	0	0	0	0	0	0	0	0	0
	18	210	190	190	210	310	270	300	310	360	340
	19	50	70	60	80	150	150	140	190	160	180
	20 to 24	100	130	130	140	230	270	260	290	270	270
	25 and over	80	120	90	90	190	230	210	280	240	240

CB.8 Placed applicants to nursing from Northern Ireland by age group at 14 days after A level results day

Selected age groups: difference between cycle and 2017 cycle

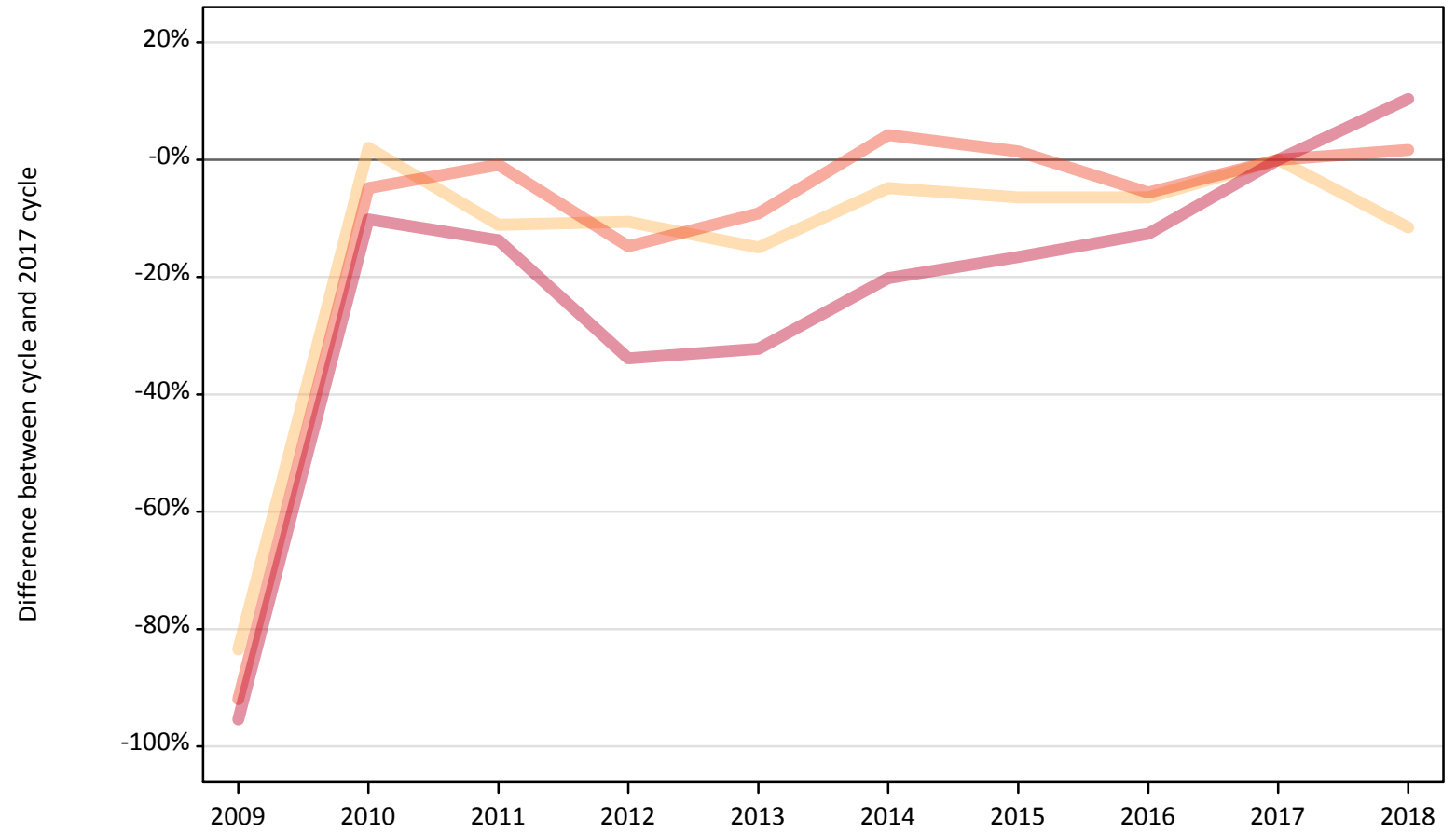
Domicile of applicant	Age group	2009	2010	2011	2012	2013	2014	2015	2016	2017	2018
Northern Ireland	17 and under										
	18	-41%	-47%	-48%	-43%	-15%	-27%	-17%	-14%	0%	-6%
	19	-70%	-60%	-62%	-53%	-6%	-11%	-13%	13%	0%	8%
	20 to 24	-65%	-53%	-53%	-48%	-16%	-2%	-5%	7%	0%	-2%
	25 and over	-66%	-51%	-63%	-62%	-18%	-5%	-12%	16%	0%	-0%

Note: The percentage change is not recorded in the above table for groups with fewer than 10 placed applicants in that cycle or in the 2017 cycle.

CB.9 Placed applicants to nursing from Scotland by age group at 14 days after A level results day

Selected age groups: difference between cycle and 2017 cycle

- 17 and under
- 18
- 19
- 20 to 24
- 25 and over



Note: The percentage change is not plotted in the above chart for groups with fewer than 30 placed applicants in any one cycle.

CB.10 Placed applicants to nursing from Scotland by age group at 14 days after A level results day

All age groups

Domicile of applicant	Age group	2009	2010	2011	2012	2013	2014	2015	2016	2017	2018
Scotland	17 and under	0	40	30	30	20	20	10	20	20	20
	18	110	650	570	570	550	610	600	600	640	570
	19	30	320	300	290	310	330	300	330	300	310
	20 to 24	60	750	780	670	720	820	800	740	790	800
	25 and over	60	1,230	1,180	910	930	1,100	1,150	1,200	1,370	1,520

CB.11 Placed applicants to nursing from Scotland by age group at 14 days after A level results day

Selected age groups: difference between cycle and 2017 cycle

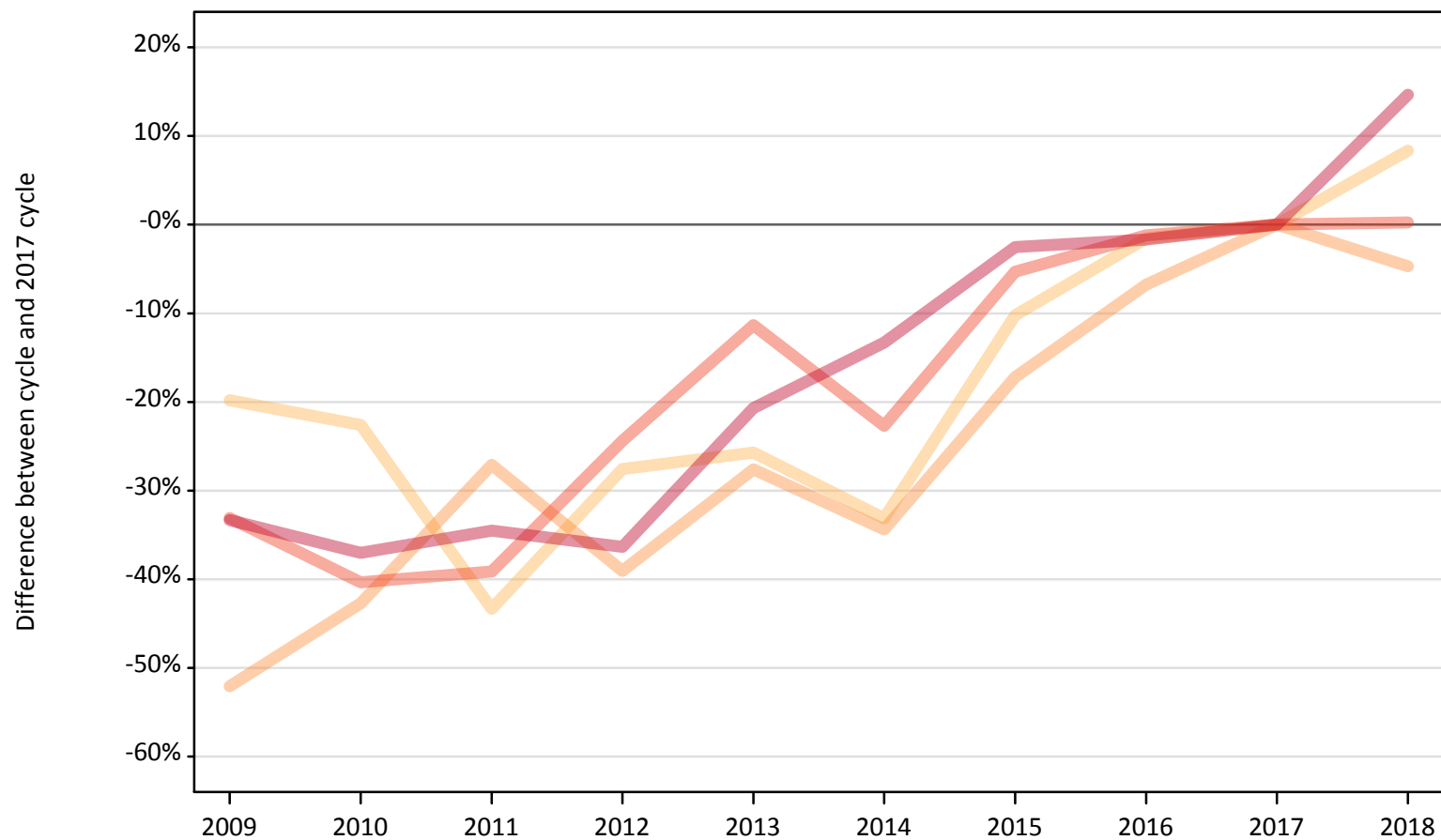
Domicile of applicant	Age group	2009	2010	2011	2012	2013	2014	2015	2016	2017	2018
Scotland	17 and under		110%	19%	19%	0%	-19%	-38%	-24%	0%	-19%
	18	-83%	2%	-11%	-11%	-15%	-5%	-6%	-6%	0%	-12%
	19	-90%	7%	-2%	-6%	0%	8%	0%	9%	0%	3%
	20 to 24	-92%	-5%	-1%	-15%	-9%	4%	1%	-6%	0%	2%
	25 and over	-95%	-10%	-14%	-34%	-32%	-20%	-17%	-13%	0%	10%

Note: The percentage change is not recorded in the above table for groups with fewer than 10 placed applicants in that cycle or in the 2017 cycle.

CB.12 Placed applicants to nursing from Wales by age group at 14 days after A level results day

Selected age groups: difference between cycle and 2017 cycle

- 17 and under
- 18
- 19
- 20 to 24
- 25 and over



Note: The percentage change is not plotted in the above chart for groups with fewer than 30 placed applicants in any one cycle.

CB.13 Placed applicants to nursing from Wales by age group at 14 days after A level results day

All age groups

Domicile of applicant	Age group	2009	2010	2011	2012	2013	2014	2015	2016	2017	2018
Wales	17 and under	0	0	0	0	0	0	0	0	0	0
	18	260	250	180	230	240	220	290	320	320	350
	19	90	110	140	120	140	130	160	180	190	180
	20 to 24	280	250	250	310	370	320	390	410	410	420
	25 and over	400	370	390	380	470	520	580	580	590	680

CB.14 Placed applicants to nursing from Wales by age group at 14 days after A level results day

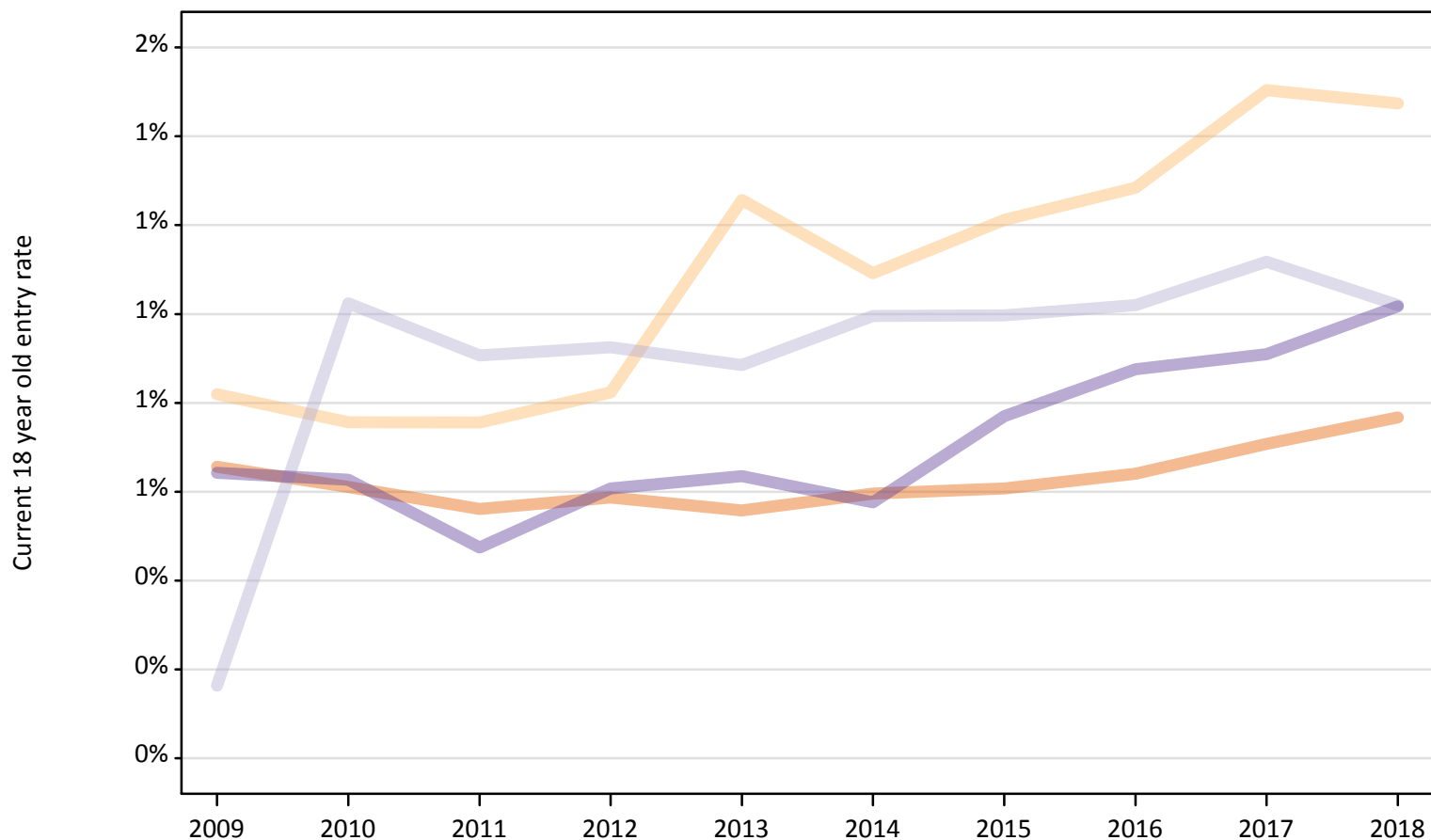
Selected age groups: difference between cycle and 2017 cycle

Domicile of applicant	Age group	2009	2010	2011	2012	2013	2014	2015	2016	2017	2018
Wales	17 and under										
	18	-20%	-23%	-43%	-28%	-26%	-33%	-10%	-2%	0%	8%
	19	-52%	-43%	-27%	-39%	-28%	-34%	-17%	-7%	0%	-5%
	20 to 24	-33%	-40%	-39%	-24%	-11%	-23%	-5%	-1%	0%	0%
	25 and over	-33%	-37%	-35%	-36%	-21%	-13%	-3%	-2%	0%	15%

Note: The percentage change is not recorded in the above table for groups with fewer than 10 placed applicants in that cycle or in the 2017 cycle.

CB.15 Entry rates to nursing for 18 year olds by UK country of domicile: 14 days after A level results day

Placed 18 year old applicants as a proportion of the 18 year old population



CB.16 Entry rates to nursing for 18 year olds by UK country of domicile: 14 days after A level results day

Placed 18 year old applicants as a proportion of the 18 year old population

Domicile of applicant	Age group	2009	2010	2011	2012	2013	2014	2015	2016	2017	2018
England	18	0.7%	0.6%	0.6%	0.6%	0.6%	0.6%	0.6%	0.6%	0.7%	0.8%
Northern Ireland	18	0.8%	0.8%	0.8%	0.8%	1.3%	1.1%	1.2%	1.3%	1.5%	1.5%
Scotland	18	0.2%	1.0%	0.9%	0.9%	0.9%	1.0%	1.0%	1.0%	1.1%	1.0%
Wales	18	0.6%	0.6%	0.5%	0.6%	0.6%	0.6%	0.8%	0.9%	0.9%	1.0%