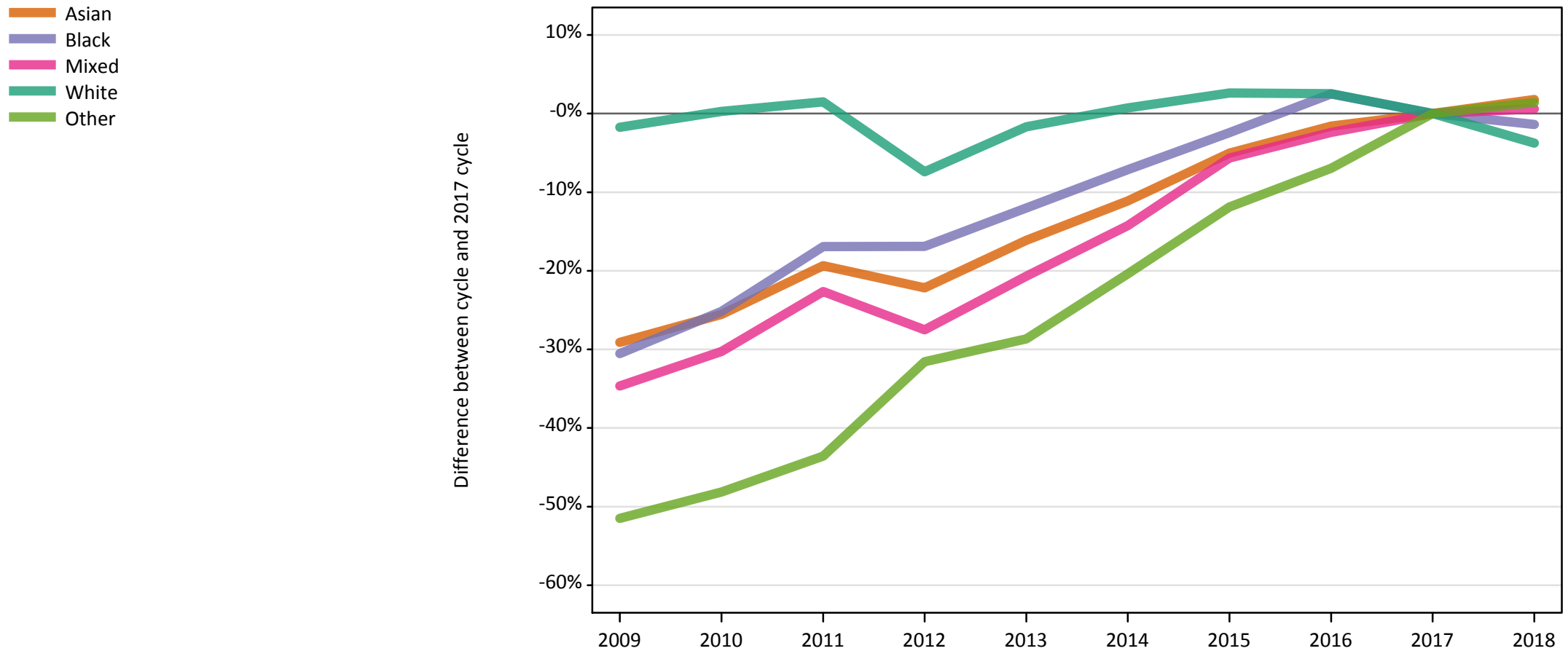


Daily Clearing Analysis: Ethnicity

Analysis at 00:05 on Thursday 30 August 2018 (14 days after A level results day)

E.1 Placed applicants from UK by ethnic group: 14 days after A level results day

Placed applicants: change relative to 2017 cycle totals



Note: The percentage change is not plotted in the above chart for groups with fewer than 30 placed applicants in any one cycle.

E.2 Placed applicants from UK by ethnic group: 14 days after A level results day

Applicant Status	Ethnic group	2009	2010	2011	2012	2013	2014	2015	2016	2017	2018
Placed	Asian	35,660	37,450	40,570	39,150	42,180	44,710	47,760	49,490	50,290	51,200
	Black	21,260	22,900	25,420	25,420	26,920	28,420	29,860	31,360	30,590	30,170
	Mixed	12,350	13,180	14,630	13,710	14,990	16,210	17,840	18,450	18,910	19,020
	White	310,930	317,290	321,150	293,000	311,130	318,710	324,750	324,470	316,420	304,580
	Other	3,560	3,800	4,140	5,020	5,230	5,840	6,470	6,830	7,340	7,440

E.3 Placed applicants from UK by ethnic group: 14 days after A level results day

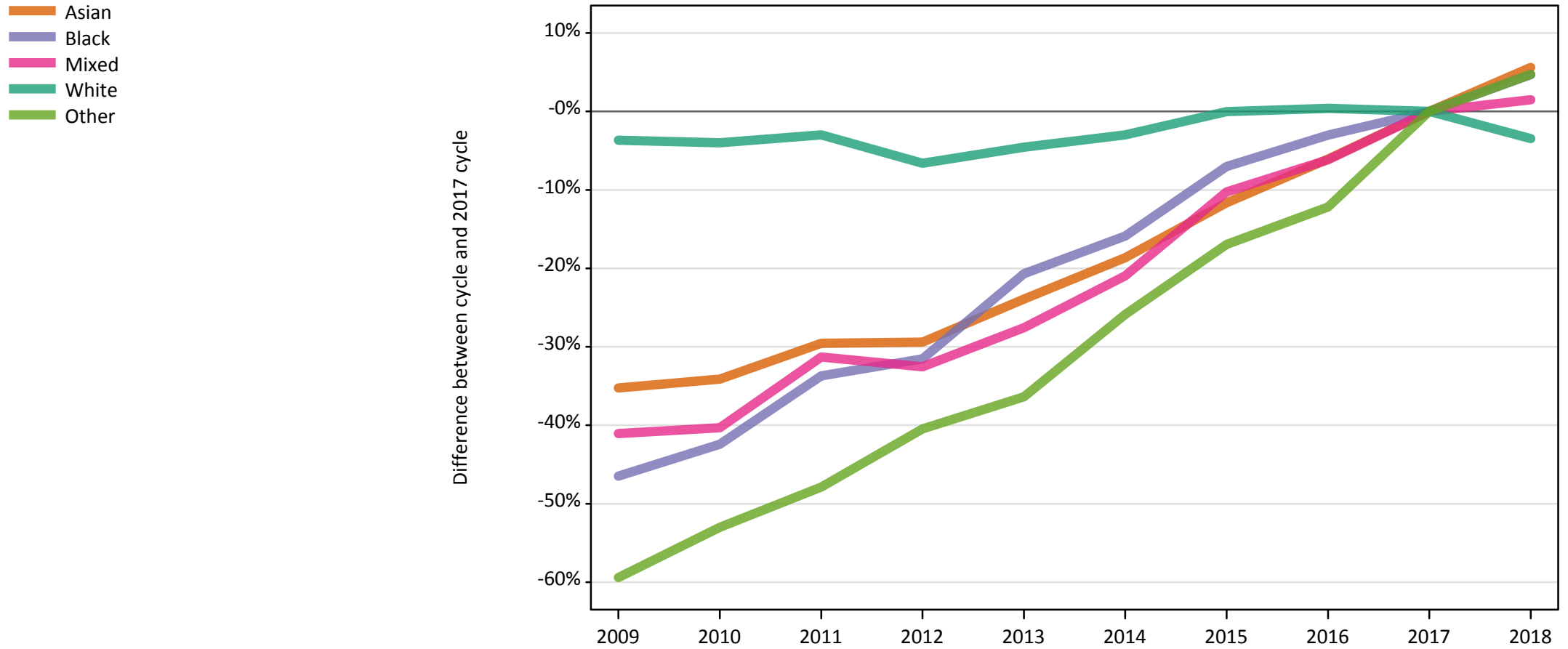
Placed applicants: change relative to 2017 cycle totals

Applicant Status	Ethnic group	2009	2010	2011	2012	2013	2014	2015	2016	2017	2018
Placed	Asian	-29%	-26%	-19%	-22%	-16%	-11%	-5%	-2%	0%	2%
	Black	-31%	-25%	-17%	-17%	-12%	-7%	-2%	2%	0%	-1%
	Mixed	-35%	-30%	-23%	-28%	-21%	-14%	-6%	-2%	0%	1%
	White	-2%	0%	1%	-7%	-2%	1%	3%	3%	0%	-4%
	Other	-51%	-48%	-44%	-32%	-29%	-20%	-12%	-7%	0%	1%

Note: The percentage change is not recorded in the above table for groups with fewer than 10 placed applicants in that cycle or in the 2017 cycle.

E.4 Placed 18 year old applicants from UK by ethnic group: 14 days after A level results day

Placed 18 year old applicants: change relative to 2017 cycle totals



Note: The percentage change is not plotted in the above chart for groups with fewer than 30 placed applicants in any one cycle.

E.5 Placed 18 year old applicants from UK by ethnic group: 14 days after A level results day

Applicant Status	Ethnic group	2009	2010	2011	2012	2013	2014	2015	2016	2017	2018
Placed	Asian	18,770	19,090	20,420	20,460	22,050	23,580	25,600	27,220	28,980	30,610
	Black	6,540	7,040	8,100	8,370	9,690	10,280	11,370	11,850	12,220	12,800
	Mixed	6,180	6,260	7,200	7,070	7,590	8,290	9,410	9,840	10,480	10,640
	White	176,300	175,700	177,550	170,960	174,680	177,540	183,000	183,750	183,010	176,710
	Other	1,450	1,670	1,860	2,120	2,270	2,640	2,960	3,130	3,560	3,730

E.6 Placed 18 year old applicants from UK by ethnic group: 14 days after A level results day

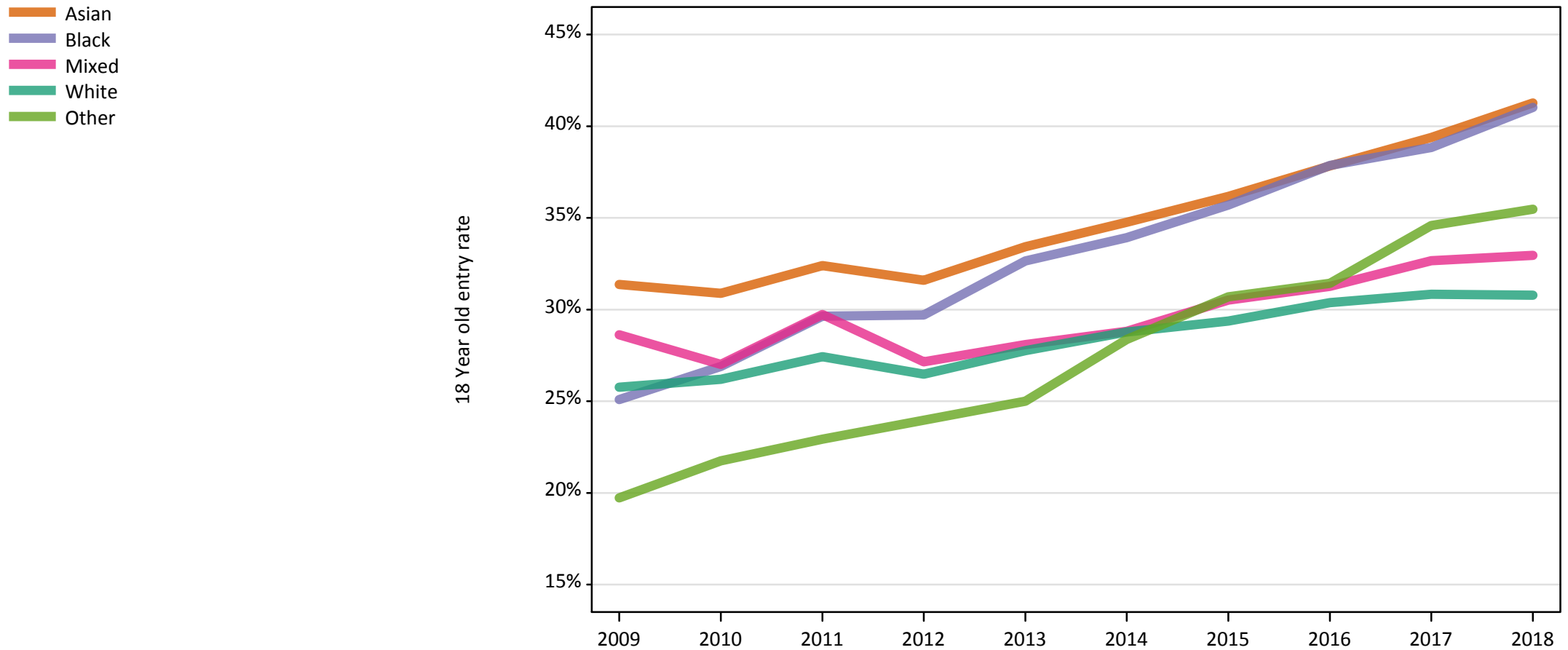
Placed 18 year old applicants: change relative to 2017 cycle totals

Applicant Status	Ethnic group	2009	2010	2011	2012	2013	2014	2015	2016	2017	2018
Placed	Asian	-35%	-34%	-30%	-29%	-24%	-19%	-12%	-6%	0%	6%
	Black	-46%	-42%	-34%	-32%	-21%	-16%	-7%	-3%	0%	5%
	Mixed	-41%	-40%	-31%	-33%	-28%	-21%	-10%	-6%	0%	1%
	White	-4%	-4%	-3%	-7%	-5%	-3%	-0%	0%	0%	-3%
	Other	-59%	-53%	-48%	-40%	-36%	-26%	-17%	-12%	0%	5%

Note: The percentage change is not recorded in the above table for groups with fewer than 10 placed applicants in that cycle or in the 2017 cycle.

E.7 Placed 18 year old applicants from UK by ethnic group: 14 days after A level results day

Placed 18 year old applicants: entry rate



E.8 Placed 18 year old applicants from UK by ethnic group: 14 days after A level results day

Placed 18 year old applicants: entry rate

Applicant Status	Ethnic group	2009	2010	2011	2012	2013	2014	2015	2016	2017	2018
Placed	Asian	31.4%	30.9%	32.4%	31.6%	33.4%	34.8%	36.2%	37.8%	39.4%	41.3%
	Black	25.1%	26.9%	29.6%	29.7%	32.6%	33.9%	35.7%	37.9%	38.8%	41.0%
	Mixed	28.6%	27.0%	29.7%	27.1%	28.1%	28.8%	30.5%	31.3%	32.7%	33.0%
	White	25.8%	26.2%	27.4%	26.5%	27.8%	28.8%	29.4%	30.4%	30.8%	30.8%
	Other	19.7%	21.7%	22.9%	24.0%	25.0%	28.4%	30.7%	31.4%	34.6%	35.5%

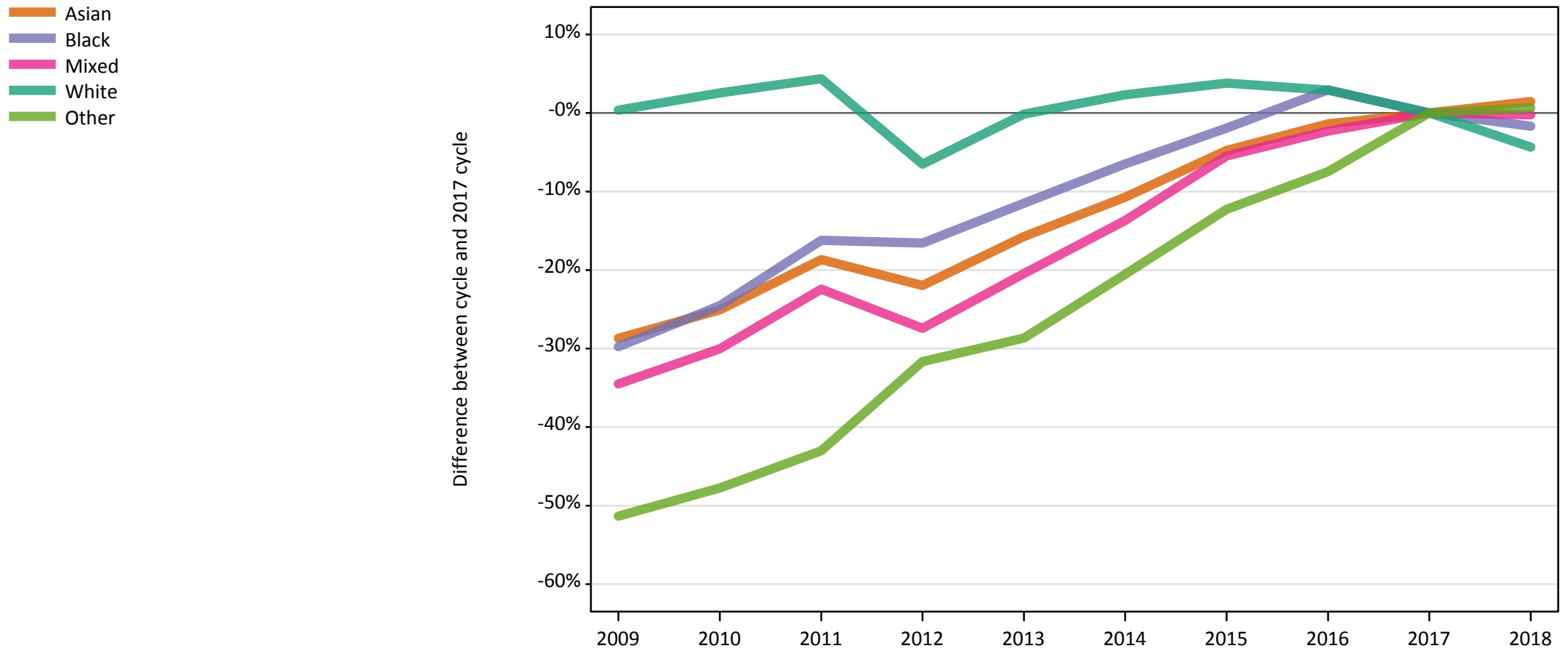
E.9 Placed 18 year old applicants from UK by ethnic group: 14 days after A level results day

Placed 18 year old applicants: entry rate (indexed to 100 = White ethnic group)

Applicant Status	Ethnic group	2009	2010	2011	2012	2013	2014	2015	2016	2017	2018
Placed	Asian	122	118	118	119	120	121	123	125	128	134
	Black	97	103	108	112	118	118	122	125	126	133
	Mixed	111	103	108	103	101	100	104	103	106	107
	White	100	100	100	100	100	100	100	100	100	100
	Other	77	83	84	91	90	99	104	103	112	115

E.10 Placed applicants from England by ethnic group: 14 days after A level results day

Placed applicants: change relative to 2017 cycle totals



Note: The percentage change is not plotted in the above chart for groups with fewer than 30 placed applicants in any one cycle.

E.11 Placed applicants from England by ethnic group: 14 days after A level results day

Applicant Status	Ethnic group	2009	2010	2011	2012	2013	2014	2015	2016	2017	2018
Placed	Asian	34,090	35,830	38,890	37,320	40,290	42,690	45,530	47,150	47,810	48,520
	Black	20,870	22,420	24,890	24,790	26,300	27,790	29,150	30,590	29,710	29,220
	Mixed	11,590	12,380	13,730	12,840	14,070	15,270	16,720	17,280	17,690	17,650
	White	255,510	261,110	265,720	237,990	254,220	260,520	264,250	262,020	254,570	243,540
	Other	3,410	3,660	3,990	4,790	5,000	5,560	6,150	6,480	7,000	7,050

E.12 Placed applicants from England by ethnic group: 14 days after A level results day

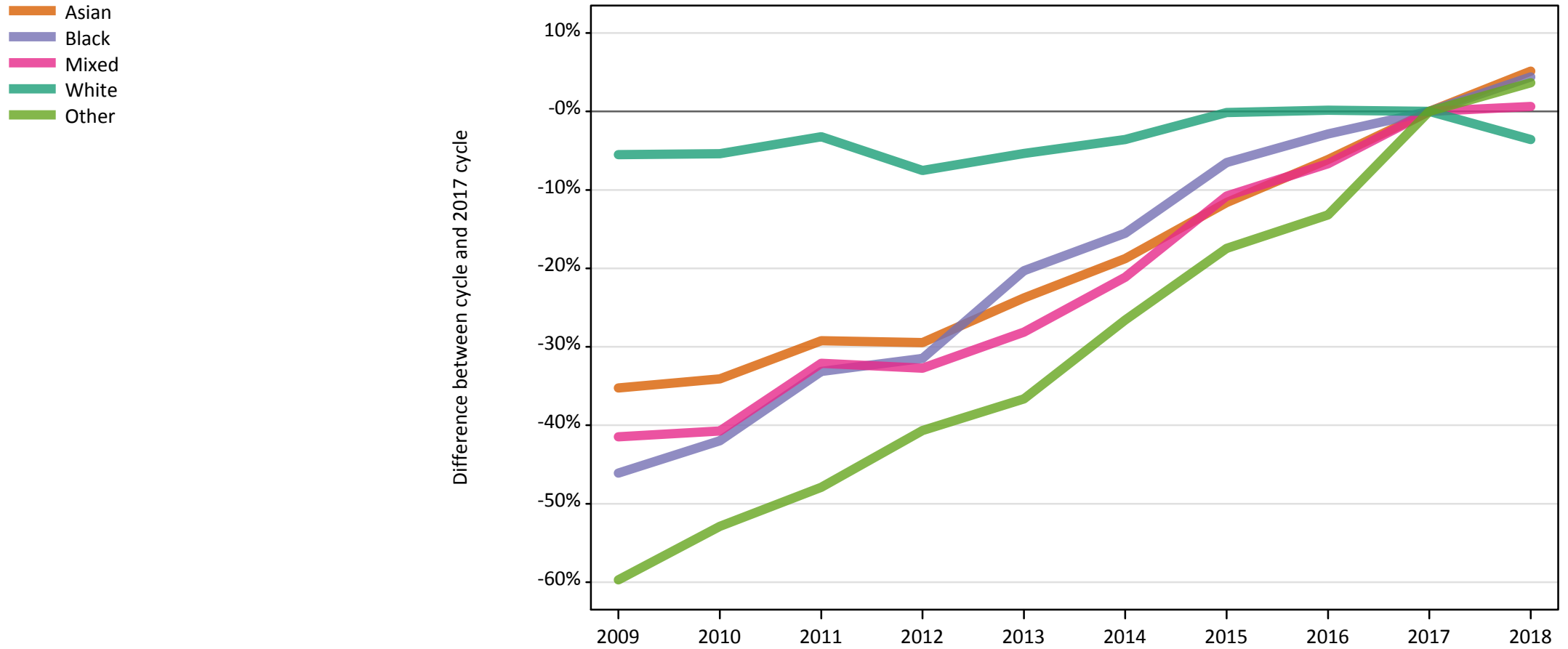
Placed applicants: change relative to 2017 cycle totals

Applicant Status	Ethnic group	2009	2010	2011	2012	2013	2014	2015	2016	2017	2018
Placed	Asian	-29%	-25%	-19%	-22%	-16%	-11%	-5%	-1%	0%	1%
	Black	-30%	-25%	-16%	-17%	-11%	-6%	-2%	3%	0%	-2%
	Mixed	-35%	-30%	-22%	-27%	-20%	-14%	-5%	-2%	0%	-0%
	White	0%	3%	4%	-7%	-0%	2%	4%	3%	0%	-4%
	Other	-51%	-48%	-43%	-32%	-29%	-21%	-12%	-7%	0%	1%

Note: The percentage change is not recorded in the above table for groups with fewer than 10 placed applicants in that cycle or in the 2017 cycle.

E.13 Placed 18 year old applicants from England by ethnic group: 14 days after A level results day

Placed 18 year old applicants: change relative to 2017 cycle totals



Note: The percentage change is not plotted in the above chart for groups with fewer than 30 placed applicants in any one cycle.

E.14 Placed 18 year old applicants from England by ethnic group: 14 days after A level results day

Applicant Status	Ethnic group	2009	2010	2011	2012	2013	2014	2015	2016	2017	2018
Placed	Asian	17,990	18,310	19,660	19,600	21,180	22,580	24,560	26,080	27,780	29,220
	Black	6,460	6,950	8,010	8,210	9,550	10,120	11,200	11,630	11,980	12,500
	Mixed	5,800	5,870	6,730	6,670	7,120	7,810	8,840	9,250	9,910	9,970
	White	143,570	143,710	147,010	140,490	143,770	146,470	151,690	152,170	151,900	146,460
	Other	1,380	1,620	1,790	2,040	2,180	2,520	2,840	2,980	3,430	3,560

E.15 Placed 18 year old applicants from England by ethnic group: 14 days after A level results day

Placed 18 year old applicants: change relative to 2017 cycle totals

Applicant Status	Ethnic group	2009	2010	2011	2012	2013	2014	2015	2016	2017	2018
Placed	Asian	-35%	-34%	-29%	-29%	-24%	-19%	-12%	-6%	0%	5%
	Black	-46%	-42%	-33%	-31%	-20%	-16%	-7%	-3%	0%	4%
	Mixed	-41%	-41%	-32%	-33%	-28%	-21%	-11%	-7%	0%	1%
	White	-5%	-5%	-3%	-8%	-5%	-4%	-0%	0%	0%	-4%
	Other	-60%	-53%	-48%	-41%	-37%	-27%	-17%	-13%	0%	4%

Note: The percentage change is not recorded in the above table for groups with fewer than 10 placed applicants in that cycle or in the 2017 cycle.

E.16 Placed applicants from Northern Ireland by ethnic group: 14 days after A level results day

Placed applicants: change relative to 2017 cycle totals



Note: The percentage change is not plotted in the above chart for groups with fewer than 30 placed applicants in any one cycle.

E.17 Placed applicants from Northern Ireland by ethnic group: 14 days after A level results day

Applicant Status	Ethnic group	2009	2010	2011	2012	2013	2014	2015	2016	2017	2018
Placed	Asian	110	120	130	130	160	150	170	210	190	220
	Black	20	20	20	30	30	50	40	60	60	50
	Mixed	90	90	110	90	100	100	140	120	140	170
	White	13,130	13,190	13,310	12,550	13,890	13,860	13,480	14,210	13,740	13,350
	Other	10	20	10	10	10	20	10	20	20	20

E.18 Placed applicants from Northern Ireland by ethnic group: 14 days after A level results day

Placed applicants: change relative to 2017 cycle totals

Applicant Status	Ethnic group	2009	2010	2011	2012	2013	2014	2015	2016	2017	2018
Placed	Asian	-42%	-38%	-34%	-31%	-20%	-23%	-11%	7%	0%	12%
	Black	-73%	-69%	-68%	-56%	-44%	-17%	-37%	-5%	0%	-8%
	Mixed	-33%	-36%	-23%	-38%	-27%	-30%	-1%	-12%	0%	20%
	White	-4%	-4%	-3%	-9%	1%	1%	-2%	3%	0%	-3%
	Other	-67%	-33%	-50%	-42%	-46%	-8%	-50%	-8%	0%	-4%

Note: The percentage change is not recorded in the above table for groups with fewer than 10 placed applicants in that cycle or in the 2017 cycle.

E.19 Placed 18 year old applicants from Northern Ireland by ethnic group: 14 days after A level results day

Placed 18 year old applicants: change relative to 2017 cycle totals



Note: The percentage change is not plotted in the above chart for groups with fewer than 30 placed applicants in any one cycle.

E.20 Placed 18 year old applicants from Northern Ireland by ethnic group: 14 days after A level results day

Applicant Status	Ethnic group	2009	2010	2011	2012	2013	2014	2015	2016	2017	2018
Placed	Asian	70	70	70	70	80	80	90	110	120	130
	Black	10	0	10	10	20	20	10	20	20	10
	Mixed	60	50	60	50	60	60	80	70	80	100
	White	9,180	8,700	8,450	8,120	8,590	8,360	8,200	8,340	8,220	7,910
	Other	0	10	10	10	0	10	0	10	10	10

E.21 Placed 18 year old applicants from Northern Ireland by ethnic group: 14 days after A level results day

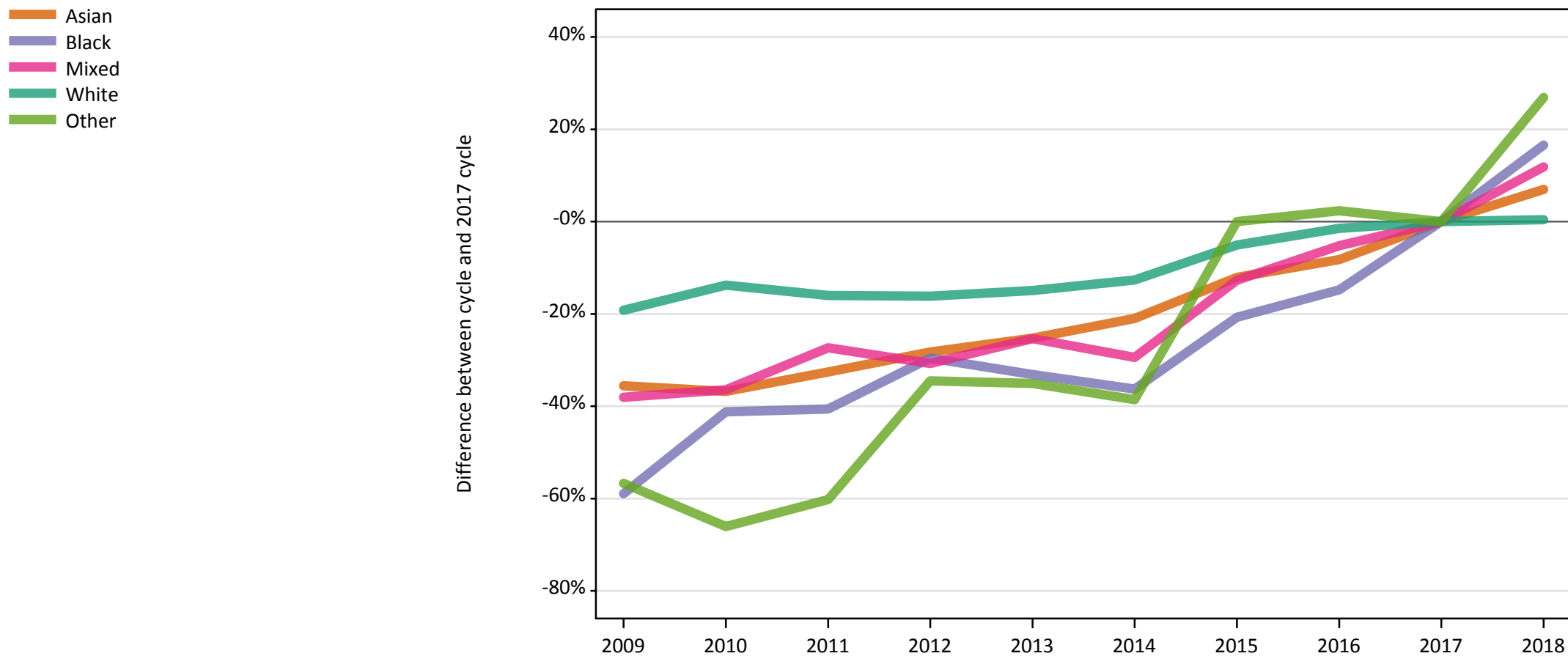
Placed 18 year old applicants: change relative to 2017 cycle totals

Applicant Status	Ethnic group	2009	2010	2011	2012	2013	2014	2015	2016	2017	2018
Placed	Asian	-40%	-42%	-42%	-42%	-32%	-31%	-20%	-7%	0%	13%
	Black	-70%		-55%	-50%	-20%	-10%	-45%	-10%	0%	-30%
	Mixed	-23%	-36%	-17%	-40%	-23%	-26%	5%	-5%	0%	27%
	White	12%	6%	3%	-1%	4%	2%	-0%	1%	0%	-4%
	Other		-40%	-50%	-50%		20%		0%	0%	30%

Note: The percentage change is not recorded in the above table for groups with fewer than 10 placed applicants in that cycle or in the 2017 cycle.

E.22 Placed applicants from Scotland by ethnic group: 14 days after A level results day

Placed applicants: change relative to 2017 cycle totals



Note: The percentage change is not plotted in the above chart for groups with fewer than 30 placed applicants in any one cycle.

E.23 Placed applicants from Scotland by ethnic group: 14 days after A level results day

Applicant Status	Ethnic group	2009	2010	2011	2012	2013	2014	2015	2016	2017	2018
Placed	Asian	980	960	1,020	1,090	1,130	1,200	1,330	1,390	1,520	1,620
	Black	210	300	300	360	340	320	400	430	510	590
	Mixed	380	390	450	430	460	430	540	580	620	690
	White	25,130	26,820	26,130	26,090	26,460	27,170	29,530	30,650	31,110	31,240
	Other	70	60	70	110	110	110	170	180	170	220

E.24 Placed applicants from Scotland by ethnic group: 14 days after A level results day

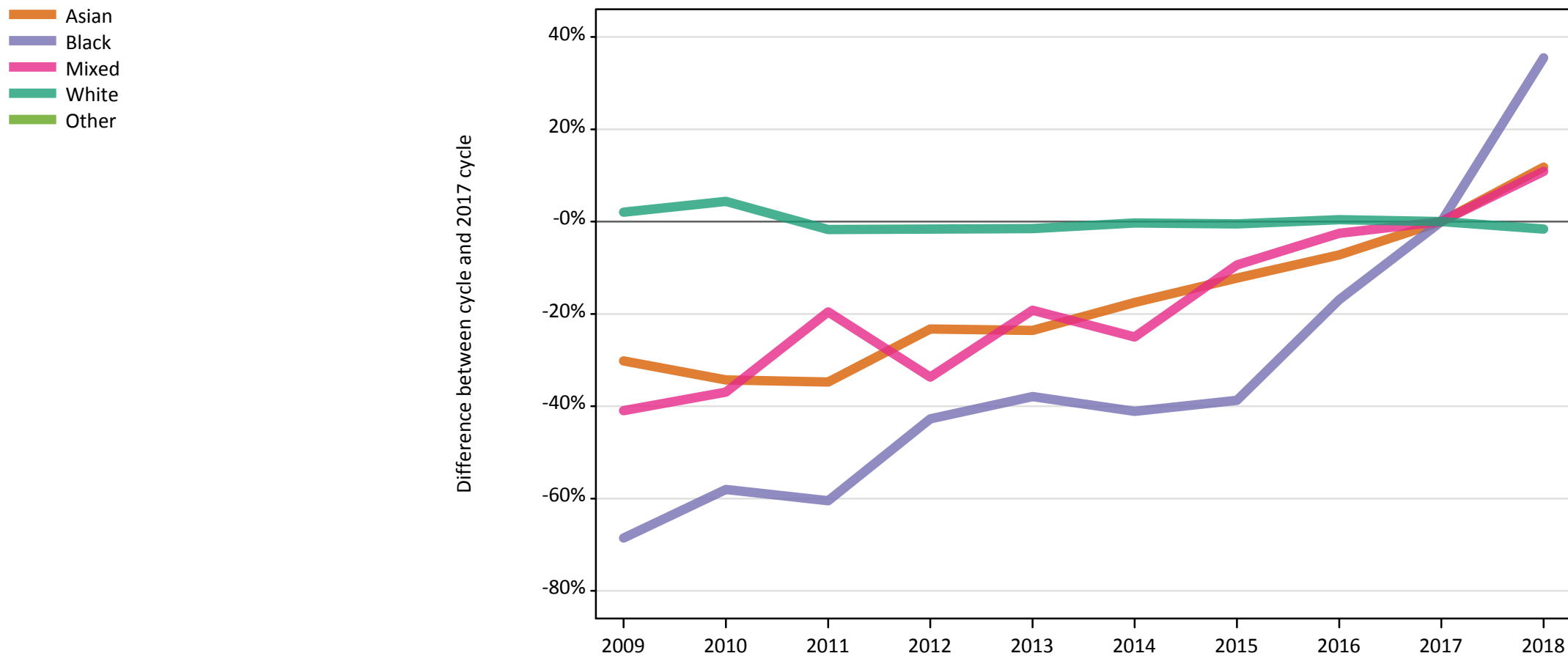
Placed applicants: change relative to 2017 cycle totals

Applicant Status	Ethnic group	2009	2010	2011	2012	2013	2014	2015	2016	2017	2018
Placed	Asian	-36%	-37%	-33%	-28%	-25%	-21%	-12%	-8%	0%	7%
	Black	-59%	-41%	-41%	-30%	-33%	-36%	-21%	-15%	0%	17%
	Mixed	-38%	-36%	-27%	-31%	-25%	-29%	-13%	-5%	0%	12%
	White	-19%	-14%	-16%	-16%	-15%	-13%	-5%	-1%	0%	0%
	Other	-57%	-66%	-60%	-35%	-35%	-39%	0%	2%	0%	27%

Note: The percentage change is not recorded in the above table for groups with fewer than 10 placed applicants in that cycle or in the 2017 cycle.

E.25 Placed 18 year old applicants from Scotland by ethnic group: 14 days after A level results day

Placed 18 year old applicants: change relative to 2017 cycle totals



Note: The percentage change is not plotted in the above chart for groups with fewer than 30 placed applicants in any one cycle.

E.26 Placed 18 year old applicants from Scotland by ethnic group: 14 days after A level results day

Applicant Status	Ethnic group	2009	2010	2011	2012	2013	2014	2015	2016	2017	2018
Placed	Asian	470	450	440	520	520	560	600	630	680	760
	Black	40	50	50	70	80	70	80	100	120	170
	Mixed	160	170	220	180	220	210	250	270	280	310
	White	13,720	14,030	13,220	13,220	13,240	13,400	13,380	13,500	13,450	13,230
	Other	30	20	30	40	40	40	60	60	60	80

E.27 Placed 18 year old applicants from Scotland by ethnic group: 14 days after A level results day

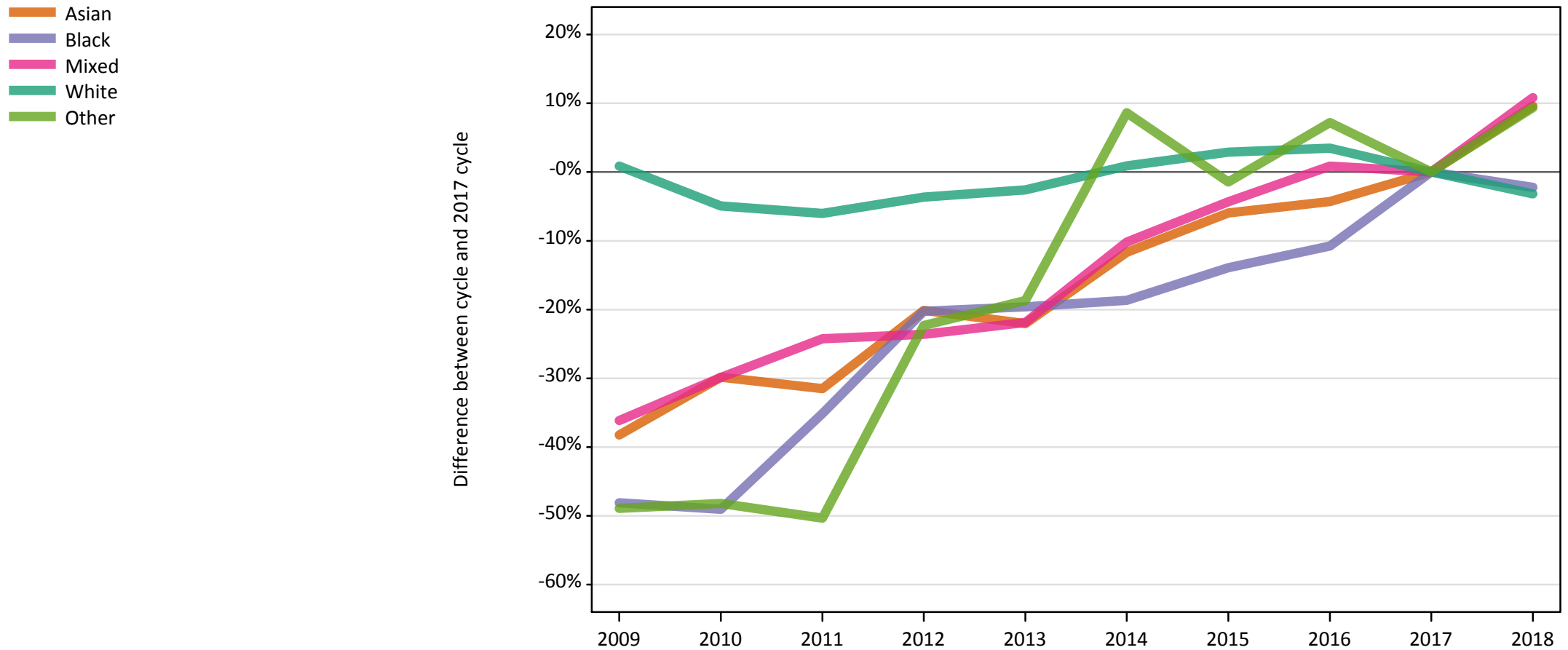
Placed 18 year old applicants: change relative to 2017 cycle totals

Applicant Status	Ethnic group	2009	2010	2011	2012	2013	2014	2015	2016	2017	2018
Placed	Asian	-30%	-34%	-35%	-23%	-24%	-18%	-12%	-7%	0%	12%
	Black	-69%	-58%	-60%	-43%	-38%	-41%	-39%	-17%	0%	35%
	Mixed	-41%	-37%	-20%	-34%	-19%	-25%	-9%	-3%	0%	11%
	White	2%	4%	-2%	-2%	-2%	-0%	-0%	0%	0%	-2%
	Other	-56%	-73%	-51%	-41%	-32%	-41%	-2%	0%	0%	24%

Note: The percentage change is not recorded in the above table for groups with fewer than 10 placed applicants in that cycle or in the 2017 cycle.

E.28 Placed applicants from Wales by ethnic group: 14 days after A level results day

Placed applicants: change relative to 2017 cycle totals



Note: The percentage change is not plotted in the above chart for groups with fewer than 30 placed applicants in any one cycle.

E.29 Placed applicants from Wales by ethnic group: 14 days after A level results day

Applicant Status	Ethnic group	2009	2010	2011	2012	2013	2014	2015	2016	2017	2018
Placed	Asian	480	540	530	620	600	680	730	740	770	850
	Black	160	160	210	250	250	260	270	280	320	310
	Mixed	300	320	350	350	360	420	440	470	460	510
	White	17,150	16,160	15,980	16,380	16,560	17,160	17,490	17,590	17,000	16,460
	Other	70	70	70	110	110	150	140	150	140	150

E.30 Placed applicants from Wales by ethnic group: 14 days after A level results day

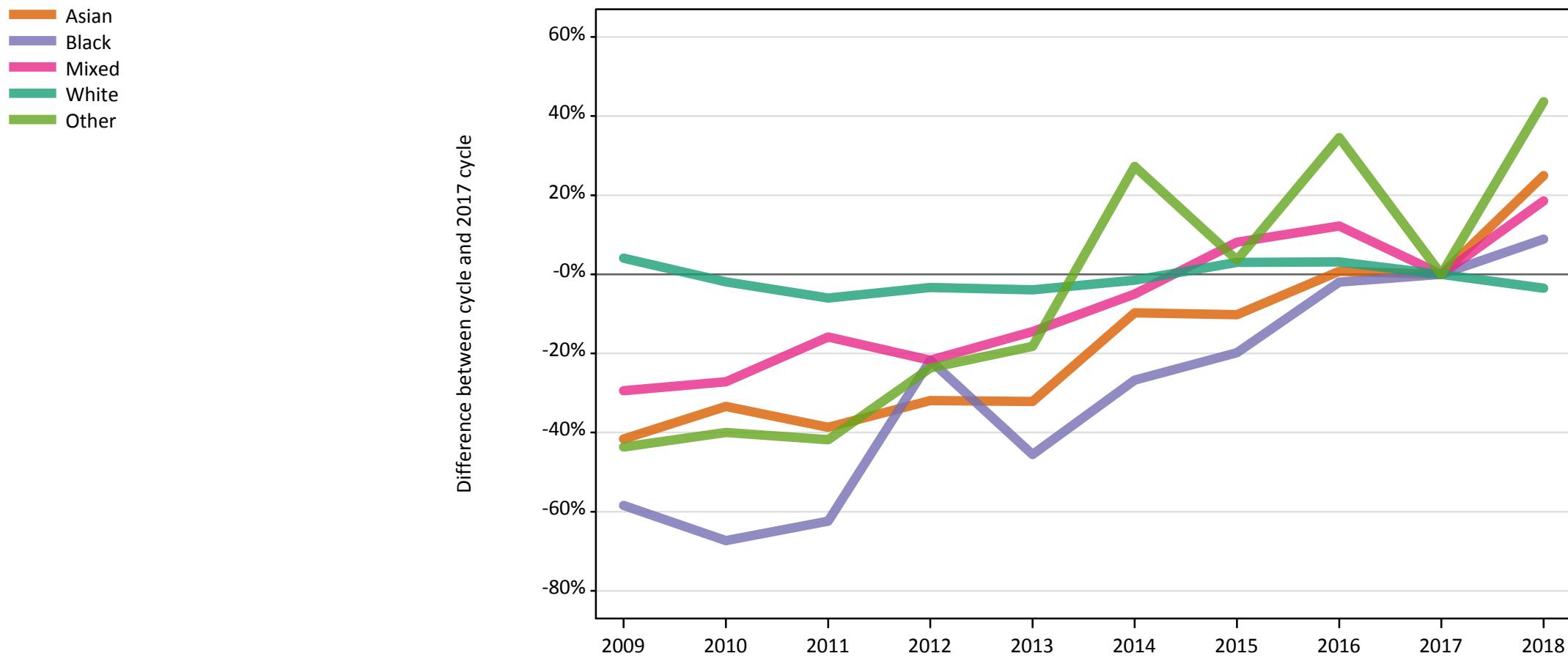
Placed applicants: change relative to 2017 cycle totals

Applicant Status	Ethnic group	2009	2010	2011	2012	2013	2014	2015	2016	2017	2018
Placed	Asian	-38%	-30%	-32%	-20%	-22%	-12%	-6%	-4%	0%	10%
	Black	-48%	-49%	-35%	-20%	-20%	-19%	-14%	-11%	0%	-2%
	Mixed	-36%	-30%	-24%	-24%	-22%	-10%	-4%	1%	0%	11%
	White	1%	-5%	-6%	-4%	-3%	1%	3%	3%	0%	-3%
	Other	-49%	-48%	-50%	-22%	-19%	9%	-1%	7%	0%	9%

Note: The percentage change is not recorded in the above table for groups with fewer than 10 placed applicants in that cycle or in the 2017 cycle.

E.31 Placed 18 year old applicants from Wales by ethnic group: 14 days after A level results day

Placed 18 year old applicants: change relative to 2017 cycle totals



Note: The percentage change is not plotted in the above chart for groups with fewer than 30 placed applicants in any one cycle.

E.32 Placed 18 year old applicants from Wales by ethnic group: 14 days after A level results day

Applicant Status	Ethnic group	2009	2010	2011	2012	2013	2014	2015	2016	2017	2018
Placed	Asian	230	270	250	270	270	360	360	400	400	500
	Black	40	30	40	80	60	70	80	100	100	110
	Mixed	160	160	190	170	190	210	240	250	220	260
	White	9,830	9,260	8,880	9,130	9,070	9,300	9,730	9,740	9,440	9,110
	Other	30	30	30	40	50	70	60	70	60	80

E.33 Placed 18 year old applicants from Wales by ethnic group: 14 days after A level results day

Placed 18 year old applicants: change relative to 2017 cycle totals

Applicant Status	Ethnic group	2009	2010	2011	2012	2013	2014	2015	2016	2017	2018
Placed	Asian	-42%	-33%	-39%	-32%	-32%	-10%	-10%	1%	0%	25%
	Black	-58%	-67%	-62%	-22%	-46%	-27%	-20%	-2%	0%	9%
	Mixed	-29%	-27%	-16%	-22%	-14%	-5%	8%	12%	0%	19%
	White	4%	-2%	-6%	-3%	-4%	-2%	3%	3%	0%	-4%
	Other	-44%	-40%	-42%	-24%	-18%	27%	4%	35%	0%	44%

Note: The percentage change is not recorded in the above table for groups with fewer than 10 placed applicants in that cycle or in the 2017 cycle.