

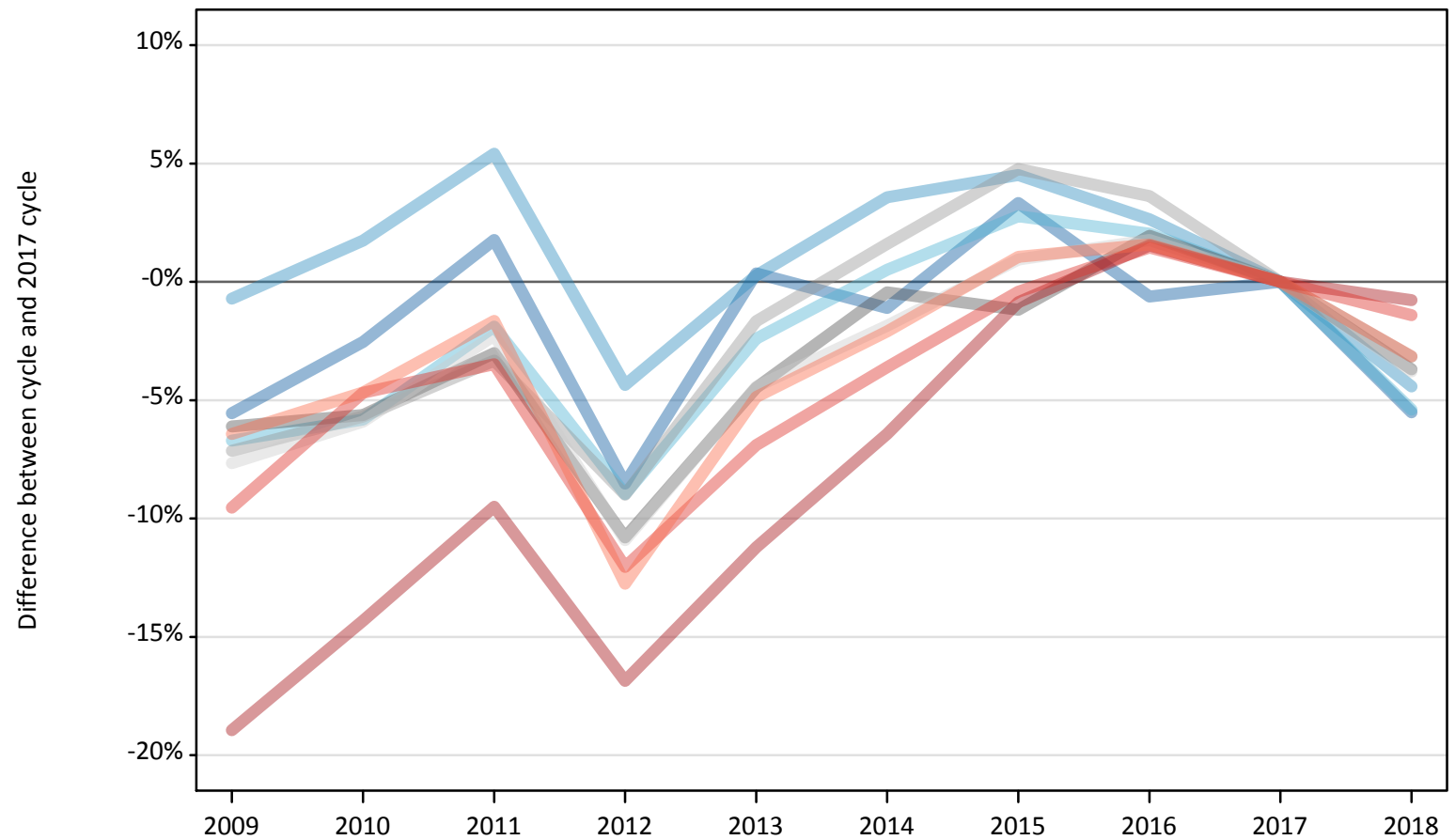
# Daily Clearing Analysis: Region

Analysis at 00:05 on Thursday 30 August 2018 (14 days after A level results day)

## R.1 Placed applicants by region of domicile: 14 days after A level results day

Placed applicants: change relative to 2017 cycle totals

- North East
- North West
- Yorkshire and The Humber
- East Midlands
- West Midlands
- East of England
- London
- South East
- South West



Note: The percentage change is not plotted in the above chart for groups with fewer than 30 placed applicants in any one cycle.

## R.2 Placed applicants by region of domicile: 14 days after A level results day

Applicant Status	Domicile	2009	2010	2011	2012	2013	2014	2015	2016	2017	2018
Placed	North East	14,540	15,010	15,670	14,080	15,450	15,230	15,910	15,300	15,400	14,550
	North West	46,060	47,200	48,900	44,370	46,520	48,050	48,480	47,620	46,390	44,340
	Yorkshire and The Humber	30,510	30,800	32,090	29,770	31,920	32,870	33,610	33,370	32,700	30,940
	East Midlands	26,220	26,350	27,080	24,910	26,670	27,800	27,590	28,470	27,920	26,890
	West Midlands	34,620	35,160	36,040	33,930	36,660	37,880	39,060	38,630	37,280	36,100
	East of England	34,450	35,110	36,460	33,240	35,660	36,620	37,660	37,970	37,310	35,900
	London	57,270	60,540	63,940	58,740	62,730	66,120	70,050	71,740	70,660	70,110
	South East	53,420	56,280	57,000	51,940	54,980	56,930	58,810	59,910	59,050	58,220
	South West	31,120	31,700	32,710	29,010	31,630	32,560	33,610	33,780	33,250	32,210
	(England total)	328,200	338,140	349,890	319,990	342,220	354,040	364,780	366,780	359,970	349,260
	Scotland	26,920	28,660	28,100	28,170	28,640	29,340	32,150	33,450	34,170	34,620
	Northern Ireland	13,390	13,460	13,600	12,830	14,210	14,200	13,870	14,650	14,200	13,850
	Wales	18,280	17,340	17,220	17,790	17,970	18,750	19,160	19,320	18,830	18,420
	UK	386,800	397,600	408,800	378,770	403,040	416,330	429,970	434,200	427,160	416,150

### R.3 Placed applicants by region of domicile: 14 days after A level results day

Placed applicants: change relative to 2017 cycle totals

Applicant Status	Domicile	2009	2010	2011	2012	2013	2014	2015	2016	2017	2018
Placed	North East	-6%	-3%	2%	-9%	0%	-1%	3%	-1%	0%	-6%
	North West	-1%	2%	5%	-4%	0%	4%	5%	3%	0%	-4%
	Yorkshire and The Humber	-7%	-6%	-2%	-9%	-2%	1%	3%	2%	0%	-5%
	East Midlands	-6%	-6%	-3%	-11%	-4%	-0%	-1%	2%	0%	-4%
	West Midlands	-7%	-6%	-3%	-9%	-2%	2%	5%	4%	0%	-3%
	East of England	-8%	-6%	-2%	-11%	-4%	-2%	1%	2%	0%	-4%
	London	-19%	-14%	-10%	-17%	-11%	-6%	-1%	2%	0%	-1%
	South East	-10%	-5%	-3%	-12%	-7%	-4%	-0%	1%	0%	-1%
	South West	-6%	-5%	-2%	-13%	-5%	-2%	1%	2%	0%	-3%
	(England total)	-9%	-6%	-3%	-11%	-5%	-2%	1%	2%	0%	-3%
	Scotland	-21%	-16%	-18%	-18%	-16%	-14%	-6%	-2%	0%	1%
	Northern Ireland	-6%	-5%	-4%	-10%	0%	-0%	-2%	3%	0%	-2%
	Wales	-3%	-8%	-9%	-6%	-5%	-0%	2%	3%	0%	-2%
	UK	-9%	-7%	-4%	-11%	-6%	-3%	1%	2%	0%	-3%

Note: The percentage change is not recorded in the above table for groups with fewer than 10 placed applicants in that cycle or in the 2017 cycle.

#### R.4 Placed applicants by region of domicile: 14 days after A level results day

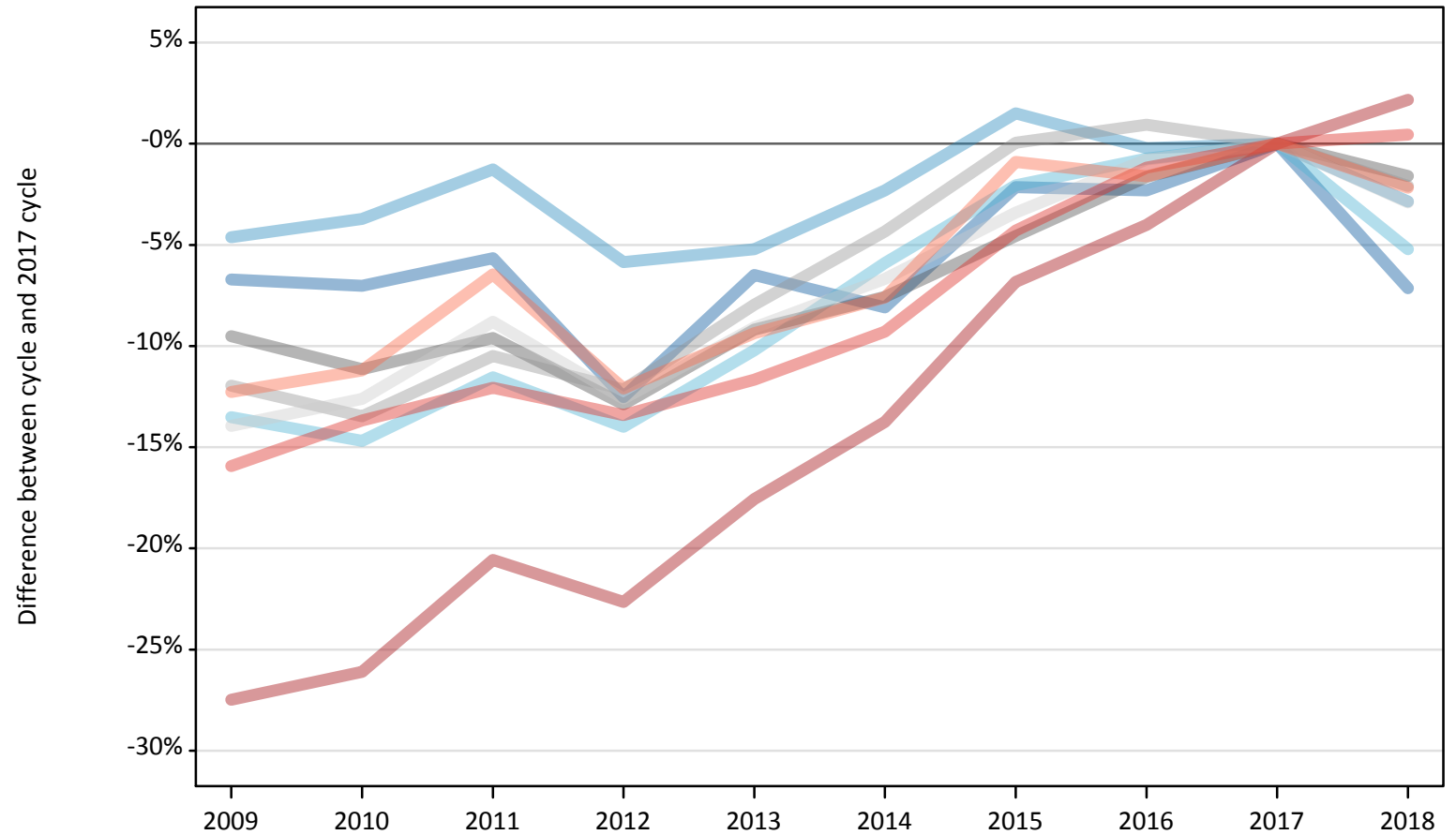
Placed applicants: absolute change relative to 2017 cycle totals

Applicant Status	Domicile	2009	2010	2011	2012	2013	2014	2015	2016	2017	2018
Placed	North East	-850	-390	270	-1,310	60	-170	510	-100	0	-850
	North West	-330	810	2,510	-2,020	130	1,660	2,090	1,230	0	-2,050
	Yorkshire and The Humber	-2,190	-1,900	-620	-2,940	-780	170	910	670	0	-1,770
	East Midlands	-1,710	-1,570	-840	-3,020	-1,250	-130	-330	540	0	-1,030
	West Midlands	-2,660	-2,120	-1,240	-3,350	-620	600	1,780	1,350	0	-1,180
	East of England	-2,860	-2,200	-850	-4,070	-1,650	-690	350	660	0	-1,410
	London	-13,390	-10,120	-6,720	-11,920	-7,920	-4,540	-610	1,090	0	-540
	South East	-5,640	-2,770	-2,050	-7,110	-4,070	-2,130	-240	860	0	-830
	South West	-2,140	-1,550	-550	-4,240	-1,620	-700	350	520	0	-1,050
	(England total)	-31,760	-21,830	-10,080	-39,980	-17,740	-5,930	4,820	6,820	0	-10,710
	Scotland	-7,240	-5,510	-6,070	-5,990	-5,530	-4,820	-2,020	-720	0	460
	Northern Ireland	-810	-740	-600	-1,380	10	-10	-330	450	0	-350
	Wales	-550	-1,490	-1,610	-1,040	-860	-80	330	500	0	-410
	UK	-40,370	-29,570	-18,360	-48,390	-24,130	-10,830	2,800	7,040	0	-11,010

## R.5 Placed 18 year old applicants by region of domicile: 14 days after A level results day

Placed 18 year old applicants: change relative to 2017 cycle totals

- North East
- North West
- Yorkshire and The Humber
- East Midlands
- West Midlands
- East of England
- London
- South East
- South West



Note: The percentage change is not plotted in the above chart for groups with fewer than 30 placed applicants in any one cycle.

## R.6 Placed 18 year old applicants by region of domicile: 14 days after A level results day

Applicant Status	Domicile	2009	2010	2011	2012	2013	2014	2015	2016	2017	2018
Placed	North East	8,070	8,050	8,170	7,570	8,090	7,960	8,470	8,460	8,660	8,040
	North West	25,600	25,840	26,500	25,270	25,450	26,220	27,250	26,780	26,840	26,080
	Yorkshire and The Humber	16,640	16,410	17,020	16,550	17,270	18,100	18,840	19,100	19,240	18,230
	East Midlands	14,770	14,500	14,750	14,220	14,820	15,080	15,570	16,050	16,320	16,060
	West Midlands	18,680	18,360	18,990	18,640	19,530	20,300	21,230	21,420	21,220	20,770
	East of England	19,790	20,100	20,970	20,100	20,910	21,460	22,220	22,820	23,000	22,330
	London	27,570	28,090	30,190	29,410	31,340	32,780	35,420	36,490	38,010	38,840
	South East	29,780	30,580	31,160	30,680	31,300	32,140	33,910	35,010	35,430	35,590
	South West	15,440	15,630	16,460	15,470	15,950	16,260	17,440	17,310	17,600	17,220
	(England total)	176,340	177,560	184,210	177,900	184,650	190,300	200,330	203,430	206,300	203,150
	Scotland	14,480	14,770	14,000	14,060	14,150	14,320	14,420	14,640	14,640	14,610
	Northern Ireland	9,340	8,840	8,600	8,260	8,760	8,530	8,410	8,560	8,480	8,190
	Wales	10,340	9,780	9,430	9,730	9,660	10,040	10,500	10,600	10,270	10,120
	UK	210,500	210,960	216,240	209,950	217,210	223,190	233,660	237,230	239,700	236,070

## R.7 Placed 18 year old applicants by region of domicile: 14 days after A level results day

Placed 18 year old applicants: change relative to 2017 cycle totals

Applicant Status	Domicile	2009	2010	2011	2012	2013	2014	2015	2016	2017	2018
Placed	North East	-7%	-7%	-6%	-13%	-6%	-8%	-2%	-2%	0%	-7%
	North West	-5%	-4%	-1%	-6%	-5%	-2%	2%	-0%	0%	-3%
	Yorkshire and The Humber	-14%	-15%	-12%	-14%	-10%	-6%	-2%	-1%	0%	-5%
	East Midlands	-10%	-11%	-10%	-13%	-9%	-8%	-5%	-2%	0%	-2%
	West Midlands	-12%	-13%	-10%	-12%	-8%	-4%	0%	1%	0%	-2%
	East of England	-14%	-13%	-9%	-13%	-9%	-7%	-3%	-1%	0%	-3%
	London	-27%	-26%	-21%	-23%	-18%	-14%	-7%	-4%	0%	2%
	South East	-16%	-14%	-12%	-13%	-12%	-9%	-4%	-1%	0%	0%
	South West	-12%	-11%	-6%	-12%	-9%	-8%	-1%	-2%	0%	-2%
	(England total)	-15%	-14%	-11%	-14%	-10%	-8%	-3%	-1%	0%	-2%
	Scotland	-1%	1%	-4%	-4%	-3%	-2%	-2%	-0%	0%	-0%
	Northern Ireland	10%	4%	1%	-3%	3%	1%	-1%	1%	0%	-3%
	Wales	1%	-5%	-8%	-5%	-6%	-2%	2%	3%	0%	-1%
	UK	-12%	-12%	-10%	-12%	-9%	-7%	-3%	-1%	0%	-2%

Note: The percentage change is not recorded in the above table for groups with fewer than 10 placed applicants in that cycle or in the 2017 cycle.

## R.8 Placed 18 year old applicants by region of domicile: 14 days after A level results day

Placed 18 year old applicants: absolute change relative to 2017 cycle totals

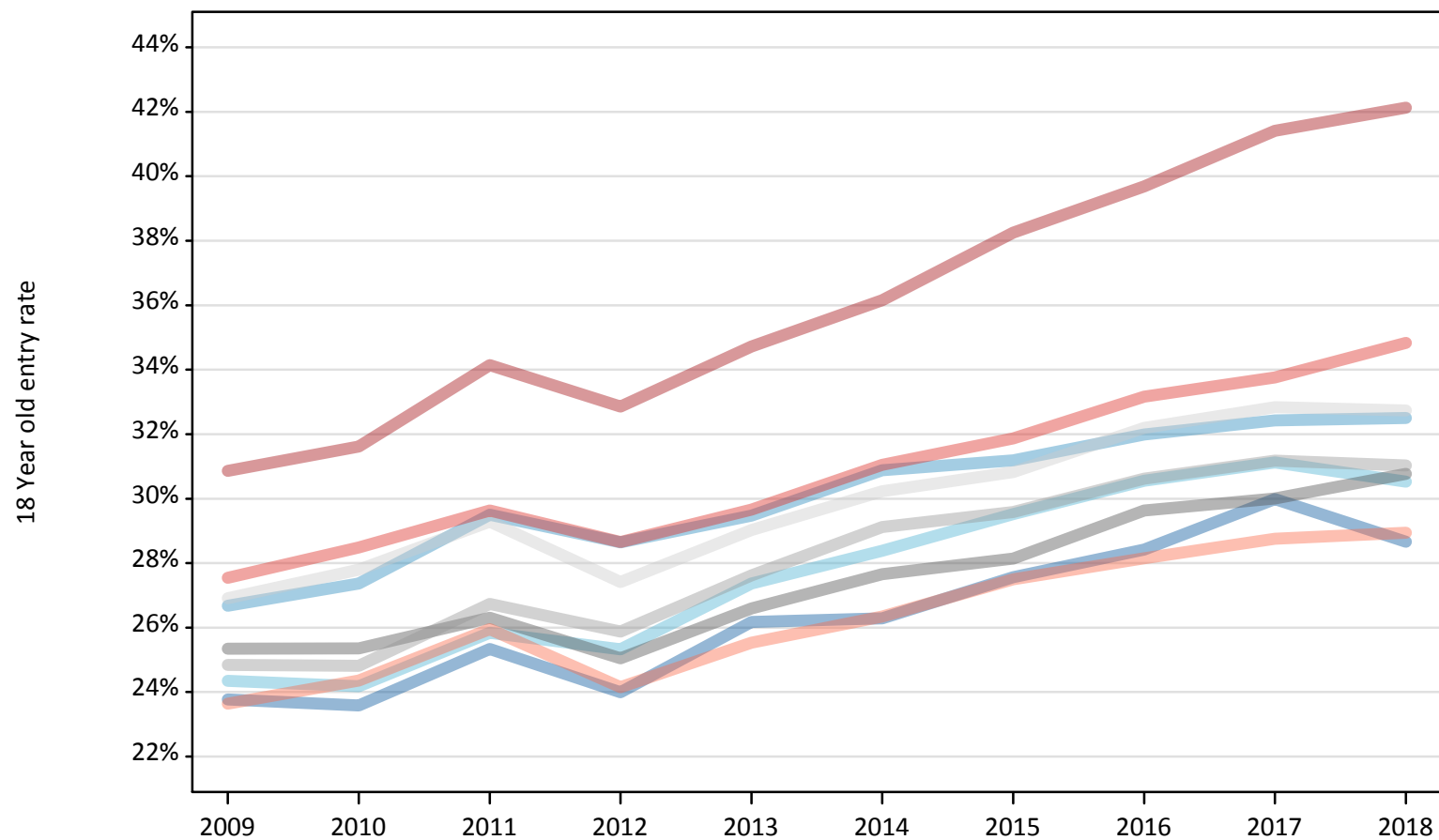
Applicant Status	Domicile	2009	2010	2011	2012	2013	2014	2015	2016	2017	2018
Placed	North East	-580	-610	-490	-1,080	-560	-700	-190	-200	0	-620
	North West	-1,240	-1,000	-340	-1,570	-1,400	-620	400	-60	0	-770
	Yorkshire and The Humber	-2,600	-2,830	-2,220	-2,690	-1,960	-1,130	-400	-140	0	-1,000
	East Midlands	-1,550	-1,820	-1,570	-2,100	-1,500	-1,230	-750	-270	0	-260
	West Midlands	-2,540	-2,860	-2,220	-2,580	-1,690	-920	10	200	0	-440
	East of England	-3,210	-2,900	-2,030	-2,900	-2,090	-1,540	-780	-180	0	-670
	London	-10,440	-9,920	-7,820	-8,610	-6,680	-5,230	-2,600	-1,530	0	830
	South East	-5,650	-4,850	-4,270	-4,750	-4,130	-3,290	-1,520	-420	0	160
	South West	-2,160	-1,970	-1,140	-2,130	-1,650	-1,340	-160	-280	0	-380
	(England total)	-29,970	-28,740	-22,090	-28,410	-21,650	-16,000	-5,970	-2,880	0	-3,150
	Scotland	-160	130	-640	-580	-500	-330	-230	0	0	-40
	Northern Ireland	860	360	120	-220	280	50	-70	80	0	-290
	Wales	70	-490	-840	-540	-610	-230	230	340	0	-150
	UK	-29,190	-28,740	-23,450	-29,750	-22,480	-16,500	-6,030	-2,460	0	-3,630



## R.9 Placed 18 year old applicants by region of domicile: 14 days after A level results day

Placed 18 year old applicants: entry rate

- North East
- North West
- Yorkshire and The Humber
- East Midlands
- West Midlands
- East of England
- London
- South East
- South West



## R.10 Placed 18 year old applicants by region of domicile: 14 days after A level results day

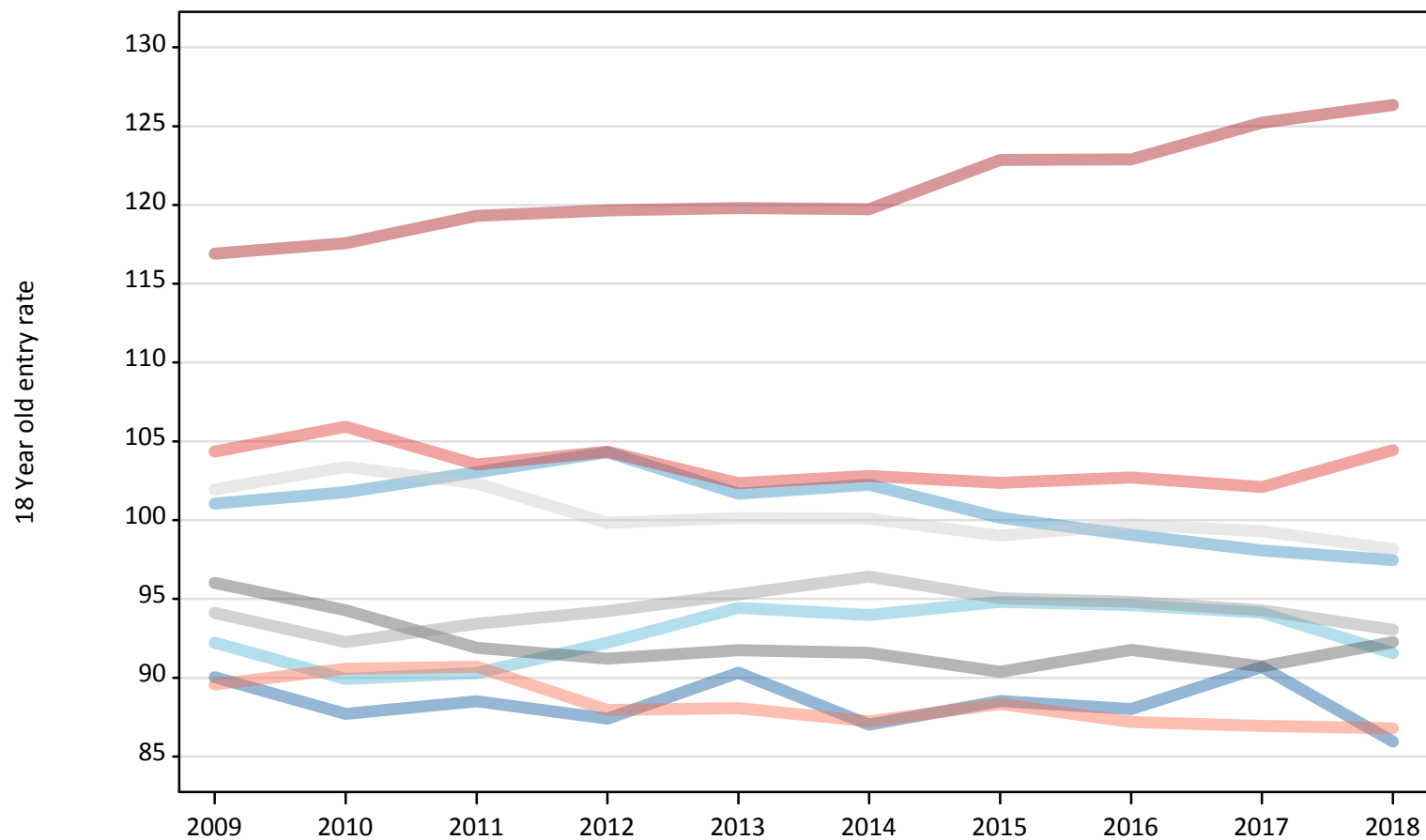
Placed 18 year old applicants: entry rate

Applicant Status	Domicile	2009	2010	2011	2012	2013	2014	2015	2016	2017	2018
Placed	North East	23.8%	23.6%	25.3%	24.0%	26.2%	26.3%	27.6%	28.4%	30.0%	28.7%
	North West	26.7%	27.4%	29.5%	28.6%	29.5%	30.9%	31.2%	32.0%	32.4%	32.5%
	Yorkshire and The Humber	24.3%	24.2%	25.8%	25.3%	27.4%	28.4%	29.5%	30.6%	31.1%	30.5%
	East Midlands	25.3%	25.4%	26.3%	25.0%	26.6%	27.7%	28.1%	29.6%	30.0%	30.8%
	West Midlands	24.8%	24.8%	26.7%	25.9%	27.6%	29.1%	29.6%	30.6%	31.2%	31.0%
	East of England	26.9%	27.8%	29.3%	27.4%	29.0%	30.2%	30.8%	32.2%	32.8%	32.7%
	London	30.9%	31.6%	34.1%	32.9%	34.7%	36.2%	38.2%	39.7%	41.4%	42.1%
	South East	27.5%	28.5%	29.6%	28.7%	29.7%	31.0%	31.9%	33.2%	33.8%	34.8%
	South West	23.6%	24.4%	26.0%	24.1%	25.5%	26.3%	27.5%	28.2%	28.8%	28.9%
	(England total)	26.4%	26.9%	28.6%	27.5%	29.0%	30.2%	31.1%	32.3%	33.1%	33.3%
	Scotland	22.3%	23.1%	22.3%	22.7%	23.0%	23.4%	24.0%	24.9%	25.5%	26.3%
	Northern Ireland	35.9%	34.7%	34.4%	32.9%	35.7%	35.2%	33.9%	35.0%	35.0%	35.3%
	Wales	25.6%	24.5%	24.4%	25.2%	25.5%	26.8%	27.9%	29.2%	28.9%	29.4%
	UK	26.3%	26.7%	28.1%	27.1%	28.5%	29.6%	30.5%	31.6%	32.4%	32.7%

### R.11 Placed 18 year old applicants by region of domicile: 14 days after A level results day

Placed 18 year old applicants: entry rates (indexed to 100 = England)

- North East
- North West
- Yorkshire and The Humber
- East Midlands
- West Midlands
- East of England
- London
- South East
- South West



### R.12 Placed 18 year old applicants by region of domicile: 14 days after A level results day

Placed 18 year old applicants: entry rate (indexed to 100 = England)

Applicant Status	Domicile	2009	2010	2011	2012	2013	2014	2015	2016	2017	2018
Placed	North East	90	88	89	87	90	87	89	88	91	86
	North West	101	102	103	104	102	102	100	99	98	97
	Yorkshire and The Humber	92	90	90	92	94	94	95	95	94	92
	East Midlands	96	94	92	91	92	92	90	92	91	92
	West Midlands	94	92	93	94	95	96	95	95	94	93
	East of England	102	103	102	100	100	100	99	100	99	98
	London	117	118	119	120	120	120	123	123	125	126
	South East	104	106	104	104	102	103	102	103	102	104
	South West	90	91	91	88	88	87	88	87	87	87
	(England total)	100	100	100	100	100	100	100	100	100	100