

Daily Clearing Analysis: Sex

Analysis at 00:05 on Thursday 30 August 2018 (14 days after A level results day)

S.1 Placed applicants from all domiciles by sex: 14 days after A level results day

Placed applicants: change relative to 2017 cycle totals

Men
Women



Note: The percentage change is not plotted in the above chart for groups with fewer than 30 placed applicants in any one cycle.

S.2 Placed applicants from all domiciles by sex: 14 days after A level results day

Applicant Status	Sex	2009	2010	2011	2012	2013	2014	2015	2016	2017	2018
Placed	Men	194,570	201,260	207,940	191,110	204,100	209,320	214,450	216,390	212,740	206,850
	Women	239,210	247,620	254,140	238,830	253,230	264,940	277,620	281,880	278,860	275,740
	All	433,780	448,880	462,080	429,940	457,330	474,260	492,080	498,270	491,600	482,590

S.3 Placed applicants from all domiciles by sex: 14 days after A level results day

Placed applicants: change relative to 2017 cycle totals

Applicant Status	Sex	2009	2010	2011	2012	2013	2014	2015	2016	2017	2018
Placed	Men	-9%	-5%	-2%	-10%	-4%	-2%	1%	2%	0%	-3%
	Women	-14%	-11%	-9%	-14%	-9%	-5%	-0%	1%	0%	-1%
	All	-12%	-9%	-6%	-13%	-7%	-4%	0%	1%	0%	-2%

Note: The percentage change is not recorded in the above table for groups with fewer than 10 placed applicants in that cycle or in the 2017 cycle.

S.4 Placed applicants from all domiciles by sex: 14 days after A level results day

Placed applicants: absolute change relative to 2017 cycle totals

Applicant Status	Sex	2009	2010	2011	2012	2013	2014	2015	2016	2017	2018
Placed	Men	-18,170	-11,480	-4,800	-21,630	-8,640	-3,420	1,720	3,650	0	-5,890
	Women	-39,650	-31,240	-24,720	-40,030	-25,630	-13,920	-1,240	3,030	0	-3,120
	All	-57,820	-42,720	-29,520	-61,660	-34,270	-17,340	480	6,670	0	-9,010

S.5 Placed applicants from the UK by sex: 14 days after A level results day

Placed applicants: change relative to 2017 cycle totals

Men
Women



Note: The percentage change is not plotted in the above chart for groups with fewer than 30 placed applicants in any one cycle.

S.6 Placed applicants from the UK by sex: 14 days after A level results day

Applicant Status	Sex	2009	2010	2011	2012	2013	2014	2015	2016	2017	2018
Placed	Men	171,390	176,620	182,960	167,320	179,050	183,160	186,950	187,950	184,000	177,790
	Women	215,410	220,980	225,840	211,460	223,990	233,170	243,020	246,260	243,160	238,360
	All	386,800	397,600	408,800	378,770	403,040	416,330	429,970	434,200	427,160	416,150

S.7 Placed applicants from the UK by sex: 14 days after A level results day

Placed applicants: change relative to 2017 cycle totals

Applicant Status	Sex	2009	2010	2011	2012	2013	2014	2015	2016	2017	2018
Placed	Men	-7%	-4%	-1%	-9%	-3%	-0%	2%	2%	0%	-3%
	Women	-11%	-9%	-7%	-13%	-8%	-4%	-0%	1%	0%	-2%
	All	-9%	-7%	-4%	-11%	-6%	-3%	1%	2%	0%	-3%

Note: The percentage change is not recorded in the above table for groups with fewer than 10 placed applicants in that cycle or in the 2017 cycle.

S.8 Placed applicants from the UK by sex: 14 days after A level results day

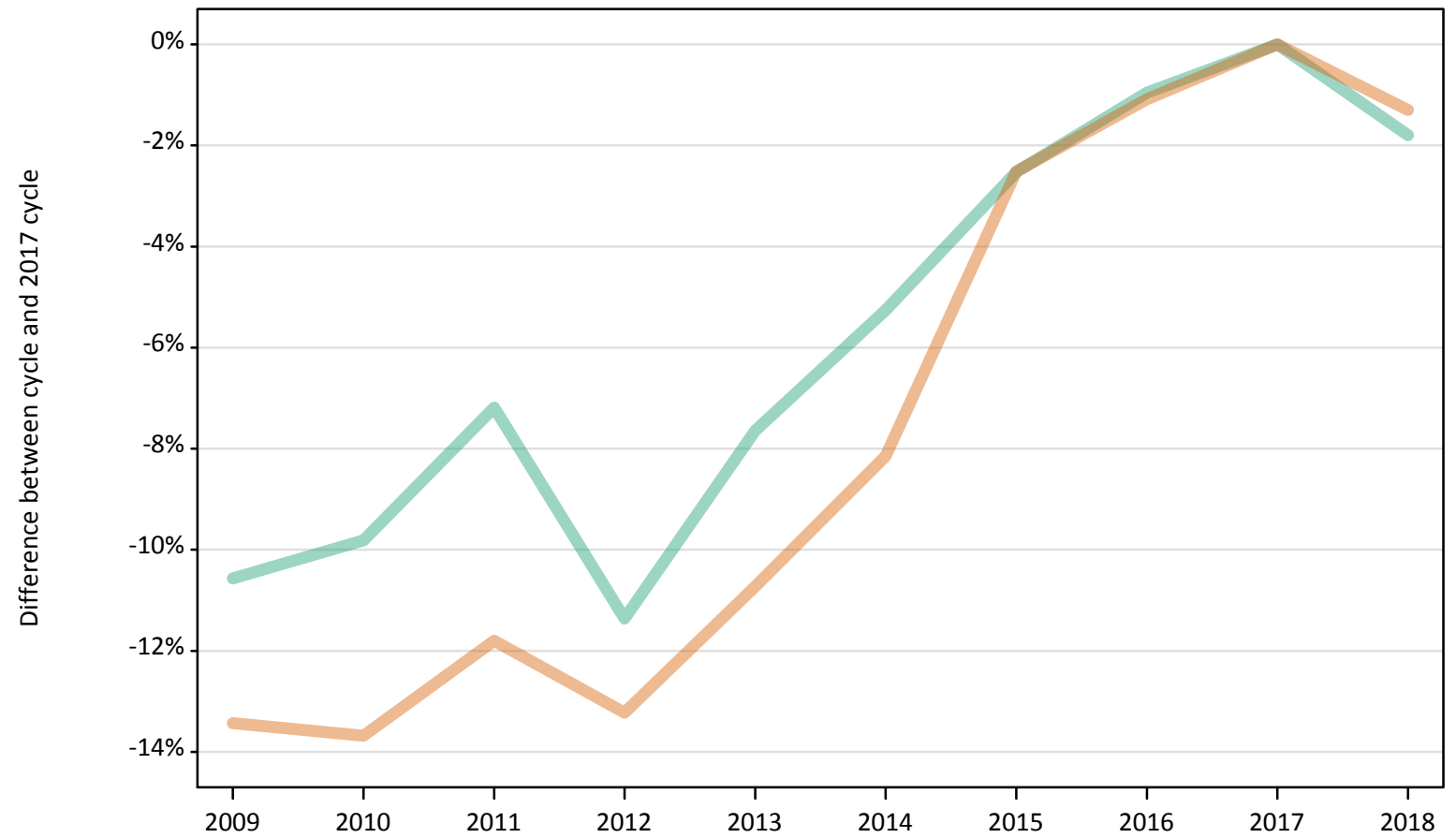
Placed applicants: absolute change relative to 2017 cycle totals

Applicant Status	Sex	2009	2010	2011	2012	2013	2014	2015	2016	2017	2018
Placed	Men	-12,610	-7,380	-1,040	-16,680	-4,950	-840	2,950	3,950	0	-6,210
	Women	-27,760	-22,190	-17,320	-31,710	-19,180	-9,990	-150	3,090	0	-4,800
	All	-40,370	-29,570	-18,360	-48,390	-24,130	-10,830	2,800	7,040	0	-11,010

S.9 Placed 18 year old applicants from the UK by sex: 14 days after A level results day

Placed 18 year old applicants: change relative to 2017 cycle totals

Men
Women



Note: The percentage change is not plotted in the above chart for groups with fewer than 30 placed applicants in any one cycle.

S.10 Placed 18 year old applicants from the UK by sex: 14 days after A level results day

Applicant Status	Sex	2009	2010	2011	2012	2013	2014	2015	2016	2017	2018
Placed	Men	93,630	94,420	97,170	92,800	96,690	99,190	102,050	103,700	104,700	102,820
	Women	116,870	116,530	119,070	117,150	120,520	124,010	131,610	133,530	135,000	133,250
	All	210,500	210,960	216,240	209,950	217,210	223,190	233,660	237,230	239,700	236,070

S.11 Placed 18 year old applicants from the UK by sex: 14 days after A level results day

Placed 18 year old applicants: change relative to 2017 cycle totals

Applicant Status	Sex	2009	2010	2011	2012	2013	2014	2015	2016	2017	2018
Placed	Men	-11%	-10%	-7%	-11%	-8%	-5%	-3%	-1%	0%	-2%
	Women	-13%	-14%	-12%	-13%	-11%	-8%	-3%	-1%	0%	-1%
	All	-12%	-12%	-10%	-12%	-9%	-7%	-3%	-1%	0%	-2%

Note: The percentage change is not recorded in the above table for groups with fewer than 10 placed applicants in that cycle or in the 2017 cycle.

S.12 Placed 18 year old applicants from the UK by sex: 14 days after A level results day

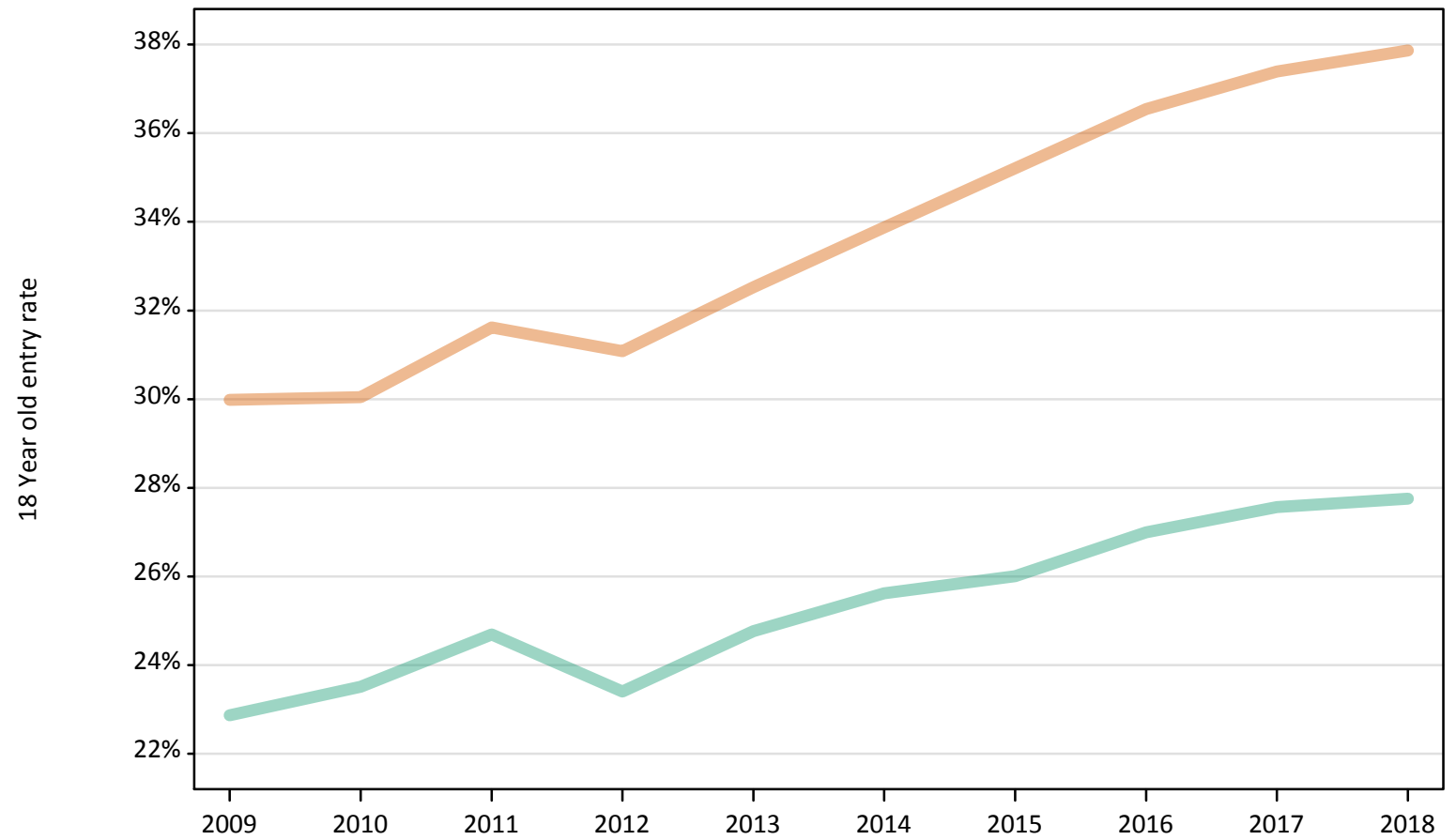
Placed 18 year old applicants: absolute change relative to 2017 cycle totals

Applicant Status	Sex	2009	2010	2011	2012	2013	2014	2015	2016	2017	2018
Placed	Men	-11,070	-10,270	-7,530	-11,900	-8,000	-5,510	-2,640	-1,000	0	-1,880
	Women	-18,130	-18,470	-15,930	-17,850	-14,480	-11,000	-3,390	-1,470	0	-1,750
	All	-29,190	-28,740	-23,450	-29,750	-22,480	-16,500	-6,030	-2,460	0	-3,630

S.13 Placed 18 year old applicants from the UK by sex: 14 days after A level results day

Placed 18 year old applicants: entry rate

Men
Women



S.14 Placed 18 year old applicants from the UK by sex: 14 days after A level results day

Placed 18 year old applicants: entry rate

Applicant Status	Sex	2009	2010	2011	2012	2013	2014	2015	2016	2017	2018
Placed	Men	22.9%	23.5%	24.7%	23.4%	24.8%	25.6%	26.0%	27.0%	27.6%	27.8%
	Women	30.0%	30.0%	31.6%	31.1%	32.5%	33.9%	35.2%	36.5%	37.4%	37.9%
	All	26.3%	26.7%	28.1%	27.1%	28.5%	29.6%	30.5%	31.6%	32.4%	32.7%

S.15 Placed 18 year old applicants from the UK by sex: 14 days after A level results day

Placed 18 year old applicants: entry rate (indexed to 100 = Men)

Applicant Status	Sex	2009	2010	2011	2012	2013	2014	2015	2016	2017	2018
Placed	Men	100	100	100	100	100	100	100	100	100	100
	Women	131	128	128	133	131	132	135	135	136	136

S.16 Placed applicants from England by sex: 14 days after A level results day

Placed applicants: change relative to 2017 cycle totals

Men
Women



Note: The percentage change is not plotted in the above chart for groups with fewer than 30 placed applicants in any one cycle.

S.17 Placed applicants from England by sex: 14 days after A level results day

Applicant Status	Sex	2009	2010	2011	2012	2013	2014	2015	2016	2017	2018
Placed	Men	145,120	150,820	157,390	141,920	152,640	156,560	159,830	159,930	156,790	150,770
	Women	183,090	187,320	192,500	178,070	189,580	197,480	204,950	206,850	203,180	198,490
	All	328,200	338,140	349,890	319,990	342,220	354,040	364,780	366,780	359,970	349,260

S.18 Placed applicants from England by sex: 14 days after A level results day

Placed applicants: change relative to 2017 cycle totals

Applicant Status	Sex	2009	2010	2011	2012	2013	2014	2015	2016	2017	2018
Placed	Men	-7%	-4%	0%	-9%	-3%	-0%	2%	2%	0%	-4%
	Women	-10%	-8%	-5%	-12%	-7%	-3%	1%	2%	0%	-2%
	All	-9%	-6%	-3%	-11%	-5%	-2%	1%	2%	0%	-3%

Note: The percentage change is not recorded in the above table for groups with fewer than 10 placed applicants in that cycle or in the 2017 cycle.

S.19 Placed applicants from England by sex: 14 days after A level results day

Placed applicants: absolute change relative to 2017 cycle totals

Applicant Status	Sex	2009	2010	2011	2012	2013	2014	2015	2016	2017	2018
Placed	Men	-11,670	-5,960	600	-14,870	-4,140	-230	3,040	3,150	0	-6,020
	Women	-20,090	-15,860	-10,680	-25,110	-13,600	-5,690	1,770	3,670	0	-4,690
	All	-31,760	-21,830	-10,080	-39,980	-17,740	-5,930	4,820	6,820	0	-10,710

S.20 Placed 18 year old applicants from England by sex: 14 days after A level results day

Placed 18 year old applicants: change relative to 2017 cycle totals

Men
Women



Note: The percentage change is not plotted in the above chart for groups with fewer than 30 placed applicants in any one cycle.

S.21 Placed 18 year old applicants from England by sex: 14 days after A level results day

Applicant Status	Sex	2009	2010	2011	2012	2013	2014	2015	2016	2017	2018
Placed	Men	78,510	79,920	83,160	79,110	82,590	85,060	88,100	89,550	90,830	89,060
	Women	97,830	97,650	101,060	98,780	102,070	105,240	112,240	113,880	115,470	114,090
	All	176,340	177,560	184,210	177,900	184,650	190,300	200,330	203,430	206,300	203,150

S.22 Placed 18 year old applicants from England by sex: 14 days after A level results day

Placed 18 year old applicants: change relative to 2017 cycle totals

Applicant Status	Sex	2009	2010	2011	2012	2013	2014	2015	2016	2017	2018
Placed	Men	-14%	-12%	-8%	-13%	-9%	-6%	-3%	-1%	0%	-2%
	Women	-15%	-15%	-12%	-14%	-12%	-9%	-3%	-1%	0%	-1%
	All	-15%	-14%	-11%	-14%	-10%	-8%	-3%	-1%	0%	-2%

Note: The percentage change is not recorded in the above table for groups with fewer than 10 placed applicants in that cycle or in the 2017 cycle.

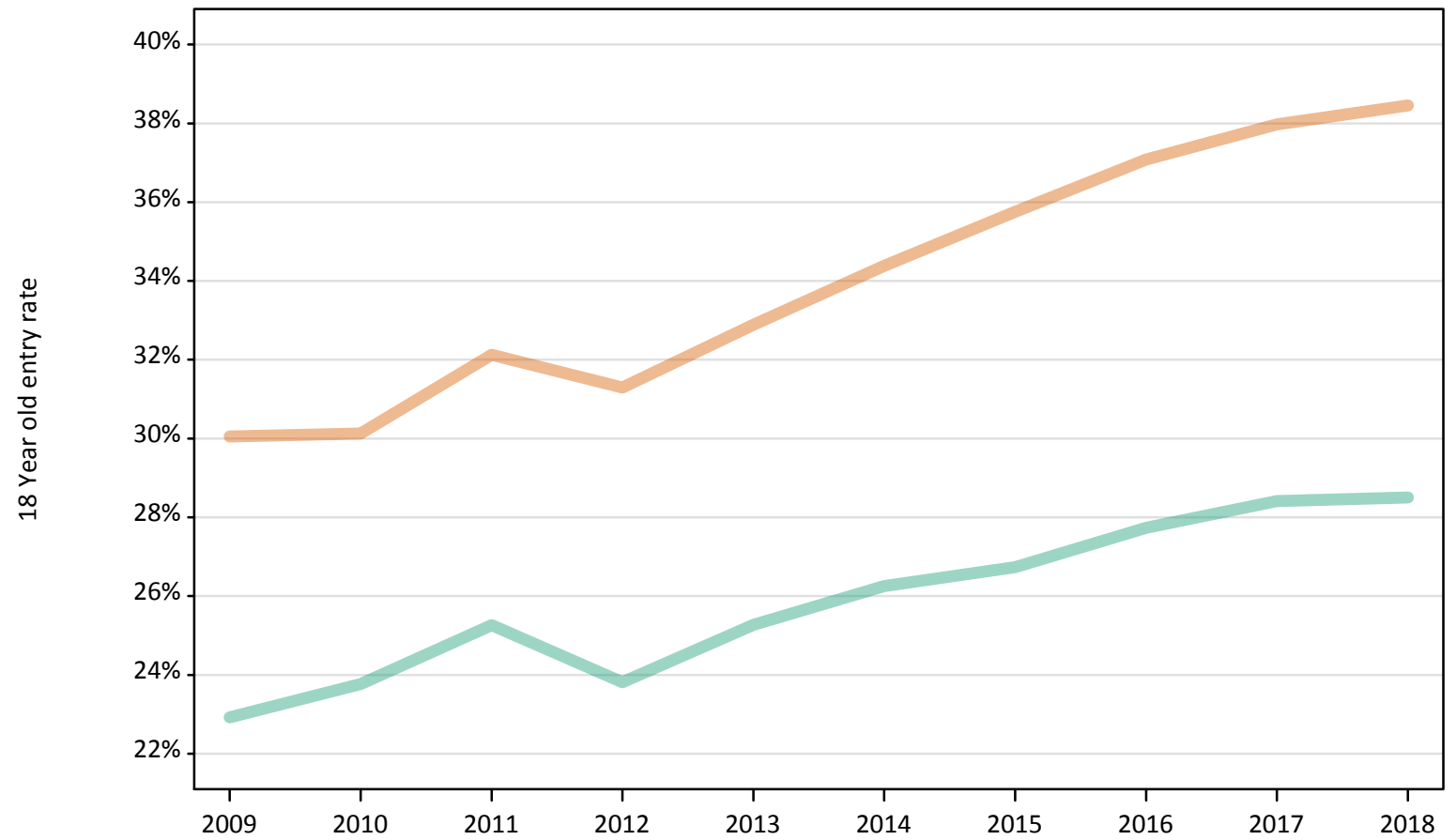
S.23 Placed 18 year old applicants from England by sex: 14 days after A level results day

Placed 18 year old applicants: absolute change relative to 2017 cycle totals

Applicant Status	Sex	2009	2010	2011	2012	2013	2014	2015	2016	2017	2018
Placed	Men	-12,330	-10,920	-7,680	-11,720	-8,250	-5,770	-2,740	-1,280	0	-1,770
	Women	-17,640	-17,830	-14,410	-16,690	-13,410	-10,230	-3,240	-1,600	0	-1,380
	All	-29,970	-28,740	-22,090	-28,410	-21,650	-16,000	-5,970	-2,880	0	-3,150

S.24 Placed 18 year old applicants from England by sex: 14 days after A level results day
Placed 18 year old applicants: entry rate

Men
Women



S.25 Placed 18 year old applicants from England by sex: 14 days after A level results day

Placed 18 year old applicants: entry rate

Applicant Status	Sex	2009	2010	2011	2012	2013	2014	2015	2016	2017	2018
Placed	Men	22.9%	23.8%	25.3%	23.8%	25.3%	26.3%	26.7%	27.7%	28.4%	28.5%
	Women	30.1%	30.1%	32.1%	31.3%	32.9%	34.4%	35.8%	37.1%	38.0%	38.5%
	All	26.4%	26.9%	28.6%	27.5%	29.0%	30.2%	31.1%	32.3%	33.1%	33.3%

S.26 Placed 18 year old applicants from England by sex: 14 days after A level results day

Placed 18 year old applicants: entry rate (indexed to 100 = Men)

Applicant Status	Sex	2009	2010	2011	2012	2013	2014	2015	2016	2017	2018
Placed	Men	100	100	100	100	100	100	100	100	100	100
	Women	131	127	127	131	130	131	134	134	134	135

S.27 Placed applicants from Northern Ireland by sex: 14 days after A level results day

Placed applicants: change relative to 2017 cycle totals

Men
Women



Note: The percentage change is not plotted in the above chart for groups with fewer than 30 placed applicants in any one cycle.

S.28 Placed applicants from Northern Ireland by sex: 14 days after A level results day

Applicant Status	Sex	2009	2010	2011	2012	2013	2014	2015	2016	2017	2018
Placed	Men	5,960	6,050	6,200	5,750	6,480	6,460	6,150	6,510	6,110	6,000
	Women	7,440	7,410	7,400	7,080	7,730	7,740	7,720	8,140	8,090	7,850
	All	13,390	13,460	13,600	12,830	14,210	14,200	13,870	14,650	14,200	13,850

S.29 Placed applicants from Northern Ireland by sex: 14 days after A level results day

Placed applicants: change relative to 2017 cycle totals

Applicant Status	Sex	2009	2010	2011	2012	2013	2014	2015	2016	2017	2018
Placed	Men	-2%	-1%	2%	-6%	6%	6%	1%	7%	0%	-2%
	Women	-8%	-8%	-9%	-13%	-4%	-4%	-5%	1%	0%	-3%
	All	-6%	-5%	-4%	-10%	0%	-0%	-2%	3%	0%	-2%

Note: The percentage change is not recorded in the above table for groups with fewer than 10 placed applicants in that cycle or in the 2017 cycle.

S.30 Placed applicants from Northern Ireland by sex: 14 days after A level results day

Placed applicants: absolute change relative to 2017 cycle totals

Applicant Status	Sex	2009	2010	2011	2012	2013	2014	2015	2016	2017	2018
Placed	Men	-150	-60	90	-360	370	350	40	400	0	-110
	Women	-660	-680	-690	-1,020	-360	-360	-370	50	0	-240
	All	-810	-740	-600	-1,380	10	-10	-330	450	0	-350

S.31 Placed 18 year old applicants from Northern Ireland by sex: 14 days after A level results day

Placed 18 year old applicants: change relative to 2017 cycle totals

Men
Women



Note: The percentage change is not plotted in the above chart for groups with fewer than 30 placed applicants in any one cycle.

S.32 Placed 18 year old applicants from Northern Ireland by sex: 14 days after A level results day

Applicant Status	Sex	2009	2010	2011	2012	2013	2014	2015	2016	2017	2018
Placed	Men	4,060	3,860	3,810	3,590	3,910	3,760	3,590	3,680	3,580	3,540
	Women	5,280	4,980	4,790	4,680	4,850	4,770	4,820	4,880	4,900	4,650
	All	9,340	8,840	8,600	8,260	8,760	8,530	8,410	8,560	8,480	8,190

S.33 Placed 18 year old applicants from Northern Ireland by sex: 14 days after A level results day

Placed 18 year old applicants: change relative to 2017 cycle totals

Applicant Status	Sex	2009	2010	2011	2012	2013	2014	2015	2016	2017	2018
Placed	Men	13%	8%	6%	0%	9%	5%	0%	3%	0%	-1%
	Women	8%	2%	-2%	-5%	-1%	-3%	-2%	-0%	0%	-5%
	All	10%	4%	1%	-3%	3%	1%	-1%	1%	0%	-3%

Note: The percentage change is not recorded in the above table for groups with fewer than 10 placed applicants in that cycle or in the 2017 cycle.

S.34 Placed 18 year old applicants from Northern Ireland by sex: 14 days after A level results day

Placed 18 year old applicants: absolute change relative to 2017 cycle totals

Applicant Status	Sex	2009	2010	2011	2012	2013	2014	2015	2016	2017	2018
Placed	Men	480	280	230	0	320	180	10	100	0	-40
	Women	380	90	-110	-220	-50	-130	-80	-20	0	-250
	All	860	360	120	-220	280	50	-70	80	0	-290

S.35 Placed 18 year old applicants from Northern Ireland by sex: 14 days after A level results day

Placed 18 year old applicants: entry rate

Men
Women



S.36 Placed 18 year old applicants from Northern Ireland by sex: 14 days after A level results day

Placed 18 year old applicants: entry rate

Applicant Status	Sex	2009	2010	2011	2012	2013	2014	2015	2016	2017	2018
Placed	Men	30.5%	29.5%	30.1%	28.1%	31.4%	30.5%	28.3%	29.4%	28.9%	29.4%
	Women	41.6%	40.1%	38.8%	37.8%	40.2%	40.0%	39.6%	40.9%	41.4%	41.7%
	All	35.9%	34.7%	34.4%	32.9%	35.7%	35.2%	33.9%	35.0%	35.0%	35.3%

S.37 Placed 18 year old applicants from Northern Ireland by sex: 14 days after A level results day

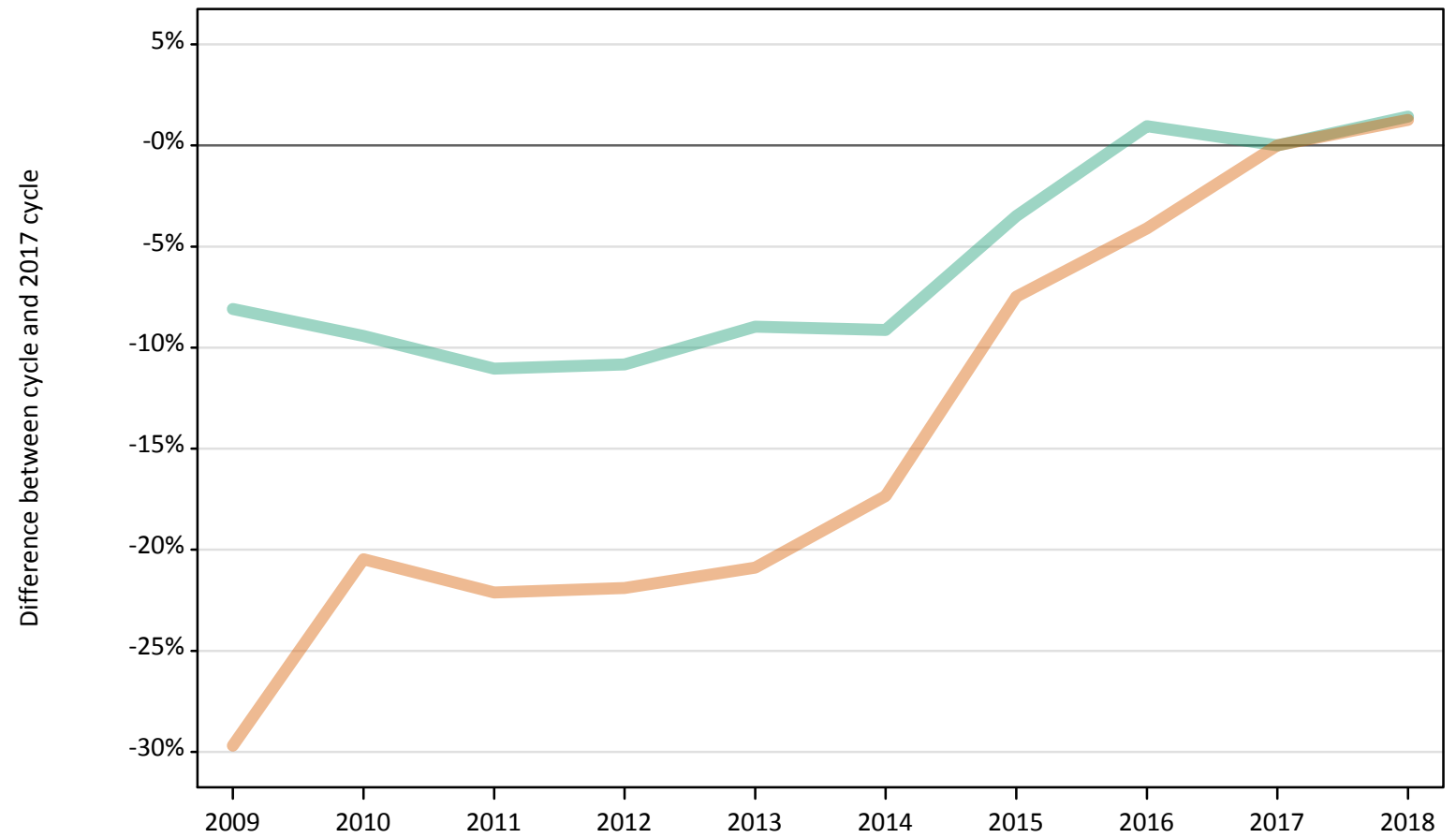
Placed 18 year old applicants: entry rate (indexed to 100 = Men)

Applicant Status	Sex	2009	2010	2011	2012	2013	2014	2015	2016	2017	2018
Placed	Men	100	100	100	100	100	100	100	100	100	100
	Women	136	136	129	134	128	131	140	139	143	142

S.38 Placed applicants from Scotland by sex: 14 days after A level results day

Placed applicants: change relative to 2017 cycle totals

Men
Women



Note: The percentage change is not plotted in the above chart for groups with fewer than 30 placed applicants in any one cycle.

S.39 Placed applicants from Scotland by sex: 14 days after A level results day

Applicant Status	Sex	2009	2010	2011	2012	2013	2014	2015	2016	2017	2018
Placed	Men	12,340	12,160	11,950	11,980	12,230	12,200	12,960	13,560	13,430	13,620
	Women	14,580	16,490	16,150	16,200	16,410	17,140	19,190	19,890	20,740	21,000
	All	26,920	28,660	28,100	28,170	28,640	29,340	32,150	33,450	34,170	34,620

S.40 Placed applicants from Scotland by sex: 14 days after A level results day

Placed applicants: change relative to 2017 cycle totals

Applicant Status	Sex	2009	2010	2011	2012	2013	2014	2015	2016	2017	2018
Placed	Men	-8%	-9%	-11%	-11%	-9%	-9%	-3%	1%	0%	1%
	Women	-30%	-20%	-22%	-22%	-21%	-17%	-7%	-4%	0%	1%
	All	-21%	-16%	-18%	-18%	-16%	-14%	-6%	-2%	0%	1%

Note: The percentage change is not recorded in the above table for groups with fewer than 10 placed applicants in that cycle or in the 2017 cycle.

S.41 Placed applicants from Scotland by sex: 14 days after A level results day

Placed applicants: absolute change relative to 2017 cycle totals

Applicant Status	Sex	2009	2010	2011	2012	2013	2014	2015	2016	2017	2018
Placed	Men	-1,090	-1,270	-1,480	-1,450	-1,200	-1,230	-470	130	0	190
	Women	-6,160	-4,250	-4,590	-4,540	-4,330	-3,600	-1,550	-850	0	260
	All	-7,240	-5,510	-6,070	-5,990	-5,530	-4,820	-2,020	-720	0	460

S.42 Placed 18 year old applicants from Scotland by sex: 14 days after A level results day

Placed 18 year old applicants: change relative to 2017 cycle totals

Men
Women



Note: The percentage change is not plotted in the above chart for groups with fewer than 30 placed applicants in any one cycle.

S.43 Placed 18 year old applicants from Scotland by sex: 14 days after A level results day

Applicant Status	Sex	2009	2010	2011	2012	2013	2014	2015	2016	2017	2018
Placed	Men	6,580	6,400	6,100	5,990	6,050	6,020	5,970	6,030	5,970	5,950
	Women	7,900	8,370	7,900	8,070	8,100	8,300	8,450	8,610	8,670	8,660
	All	14,480	14,770	14,000	14,060	14,150	14,320	14,420	14,640	14,640	14,610

S.44 Placed 18 year old applicants from Scotland by sex: 14 days after A level results day

Placed 18 year old applicants: change relative to 2017 cycle totals

Applicant Status	Sex	2009	2010	2011	2012	2013	2014	2015	2016	2017	2018
Placed	Men	10%	7%	2%	0%	1%	1%	-0%	1%	0%	-0%
	Women	-9%	-3%	-9%	-7%	-7%	-4%	-3%	-1%	0%	-0%
	All	-1%	1%	-4%	-4%	-3%	-2%	-2%	-0%	0%	-0%

Note: The percentage change is not recorded in the above table for groups with fewer than 10 placed applicants in that cycle or in the 2017 cycle.

S.45 Placed 18 year old applicants from Scotland by sex: 14 days after A level results day

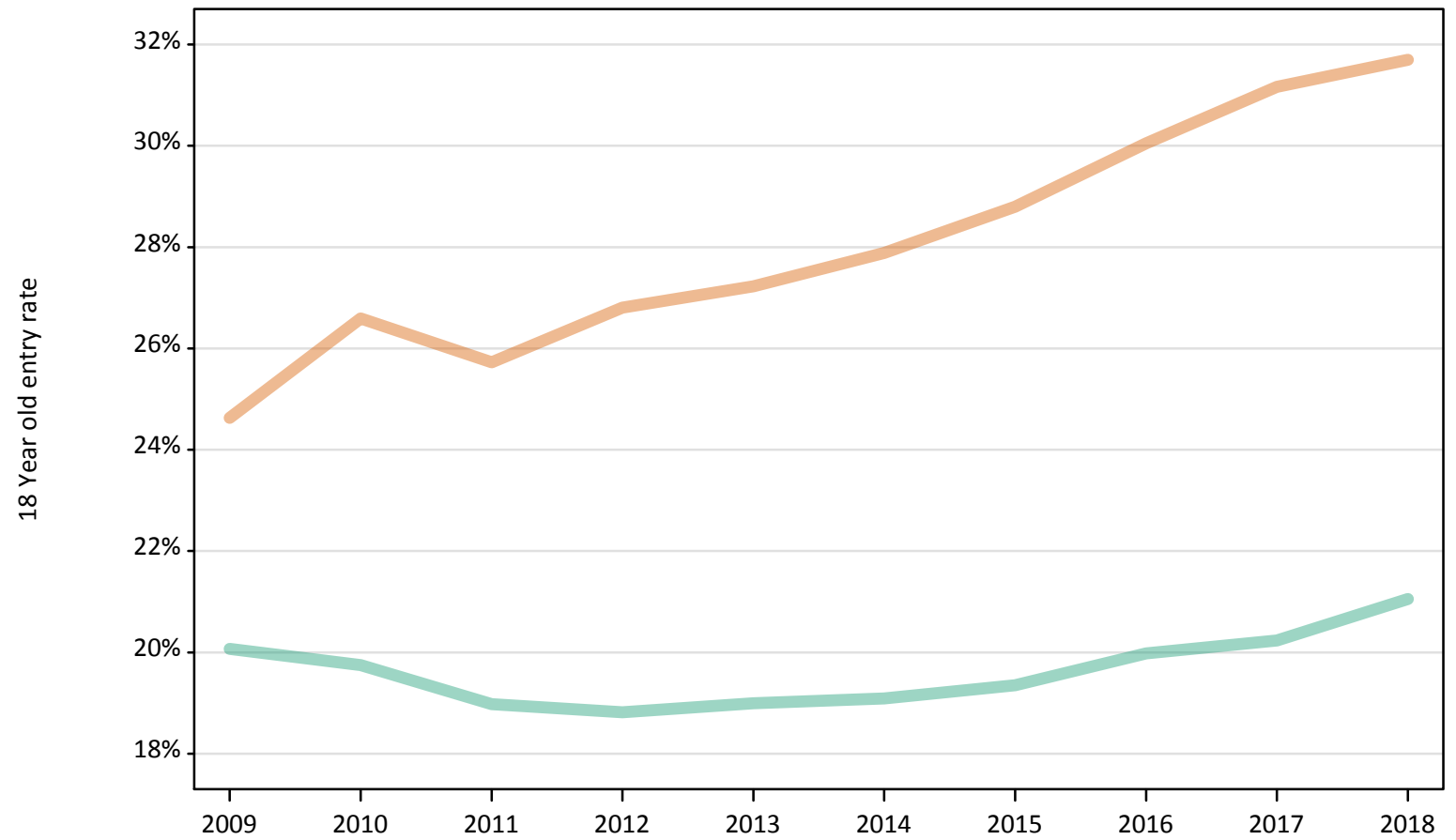
Placed 18 year old applicants: absolute change relative to 2017 cycle totals

Applicant Status	Sex	2009	2010	2011	2012	2013	2014	2015	2016	2017	2018
Placed	Men	610	420	130	20	80	40	-10	60	0	-30
	Women	-770	-300	-770	-600	-570	-370	-220	-60	0	-10
	All	-160	130	-640	-580	-500	-330	-230	0	0	-40

S.46 Placed 18 year old applicants from Scotland by sex: 14 days after A level results day

Placed 18 year old applicants: entry rate

Men
Women



S.47 Placed 18 year old applicants from Scotland by sex: 14 days after A level results day

Placed 18 year old applicants: entry rate

Applicant Status	Sex	2009	2010	2011	2012	2013	2014	2015	2016	2017	2018
Placed	Men	20.1%	19.7%	19.0%	18.8%	19.0%	19.1%	19.4%	20.0%	20.2%	21.1%
	Women	24.6%	26.6%	25.7%	26.8%	27.2%	27.9%	28.8%	30.1%	31.2%	31.7%
	All	22.3%	23.1%	22.3%	22.7%	23.0%	23.4%	24.0%	24.9%	25.5%	26.3%

S.48 Placed 18 year old applicants from Scotland by sex: 14 days after A level results day

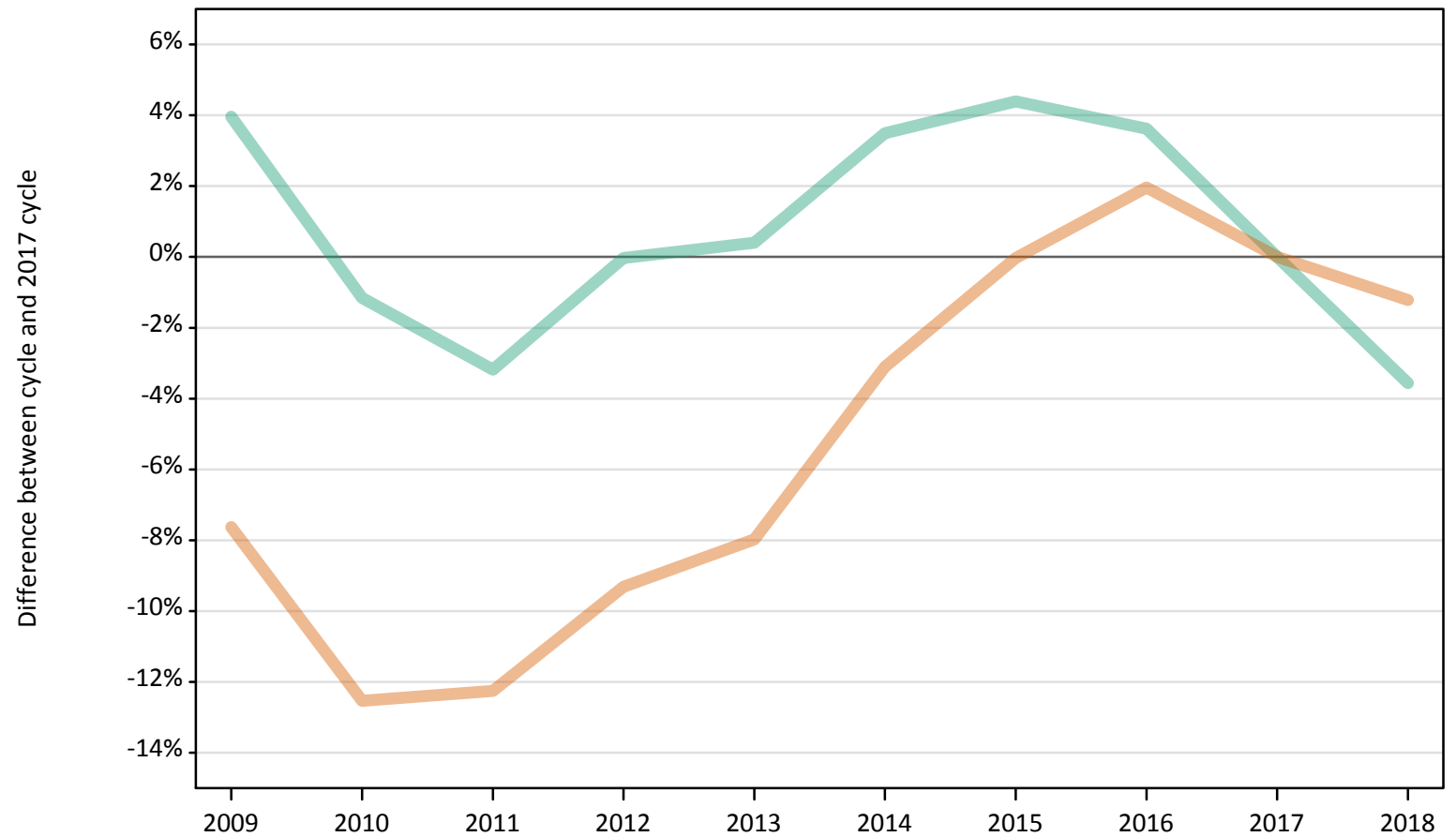
Placed 18 year old applicants: entry rate (indexed to 100 = Men)

Applicant Status	Sex	2009	2010	2011	2012	2013	2014	2015	2016	2017	2018
Placed	Men	100	100	100	100	100	100	100	100	100	100
	Women	123	135	136	142	143	146	149	150	154	151

S.49 Placed applicants from Wales by sex: 14 days after A level results day

Placed applicants: change relative to 2017 cycle totals

Men
Women



Note: The percentage change is not plotted in the above chart for groups with fewer than 30 placed applicants in any one cycle.

S.50 Placed applicants from Wales by sex: 14 days after A level results day

Applicant Status	Sex	2009	2010	2011	2012	2013	2014	2015	2016	2017	2018
Placed	Men	7,980	7,580	7,430	7,670	7,700	7,940	8,010	7,950	7,670	7,400
	Women	10,310	9,760	9,790	10,120	10,270	10,810	11,150	11,380	11,160	11,020
	All	18,280	17,340	17,220	17,790	17,970	18,750	19,160	19,320	18,830	18,420

S.51 Placed applicants from Wales by sex: 14 days after A level results day

Placed applicants: change relative to 2017 cycle totals

Applicant Status	Sex	2009	2010	2011	2012	2013	2014	2015	2016	2017	2018
Placed	Men	4%	-1%	-3%	-0%	0%	3%	4%	4%	0%	-4%
	Women	-8%	-13%	-12%	-9%	-8%	-3%	-0%	2%	0%	-1%
	All	-3%	-8%	-9%	-6%	-5%	-0%	2%	3%	0%	-2%

Note: The percentage change is not recorded in the above table for groups with fewer than 10 placed applicants in that cycle or in the 2017 cycle.

S.52 Placed applicants from Wales by sex: 14 days after A level results day

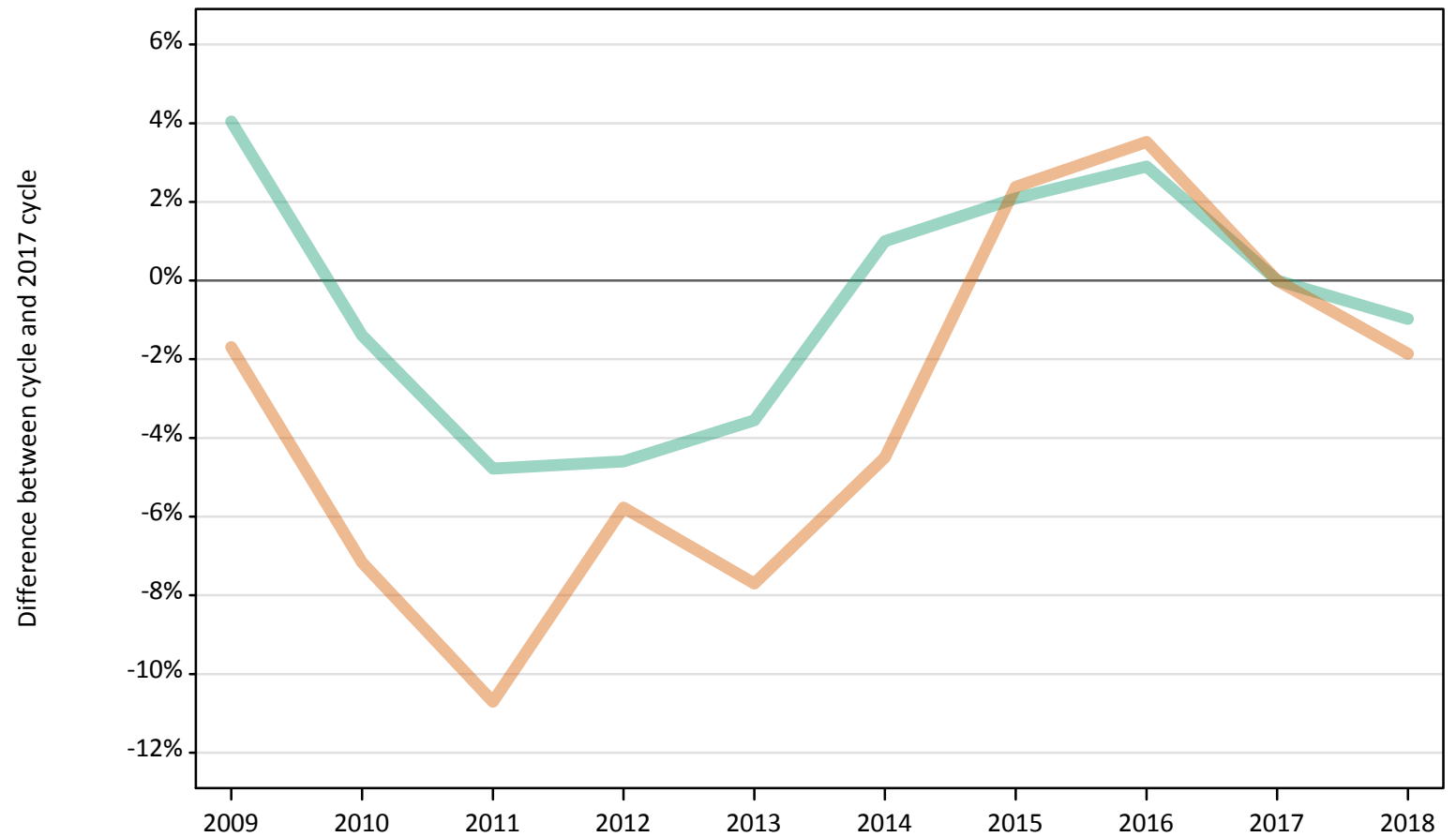
Placed applicants: absolute change relative to 2017 cycle totals

Applicant Status	Sex	2009	2010	2011	2012	2013	2014	2015	2016	2017	2018
Placed	Men	300	-90	-240	0	30	270	340	280	0	-270
	Women	-850	-1,400	-1,370	-1,040	-890	-350	0	220	0	-140
	All	-550	-1,490	-1,610	-1,040	-860	-80	330	500	0	-410

S.53 Placed 18 year old applicants from Wales by sex: 14 days after A level results day

Placed 18 year old applicants: change relative to 2017 cycle totals

Men
Women



Note: The percentage change is not plotted in the above chart for groups with fewer than 30 placed applicants in any one cycle.

S.54 Placed 18 year old applicants from Wales by sex: 14 days after A level results day

Applicant Status	Sex	2009	2010	2011	2012	2013	2014	2015	2016	2017	2018
Placed	Men	4,480	4,250	4,100	4,110	4,160	4,350	4,400	4,430	4,310	4,270
	Women	5,860	5,530	5,320	5,620	5,500	5,690	6,100	6,170	5,960	5,850
	All	10,340	9,780	9,430	9,730	9,660	10,040	10,500	10,600	10,270	10,120

S.55 Placed 18 year old applicants from Wales by sex: 14 days after A level results day

Placed 18 year old applicants: change relative to 2017 cycle totals

Applicant Status	Sex	2009	2010	2011	2012	2013	2014	2015	2016	2017	2018
Placed	Men	4%	-1%	-5%	-5%	-4%	1%	2%	3%	0%	-1%
	Women	-2%	-7%	-11%	-6%	-8%	-4%	2%	4%	0%	-2%
	All	1%	-5%	-8%	-5%	-6%	-2%	2%	3%	0%	-1%

Note: The percentage change is not recorded in the above table for groups with fewer than 10 placed applicants in that cycle or in the 2017 cycle.

S.56 Placed 18 year old applicants from Wales by sex: 14 days after A level results day

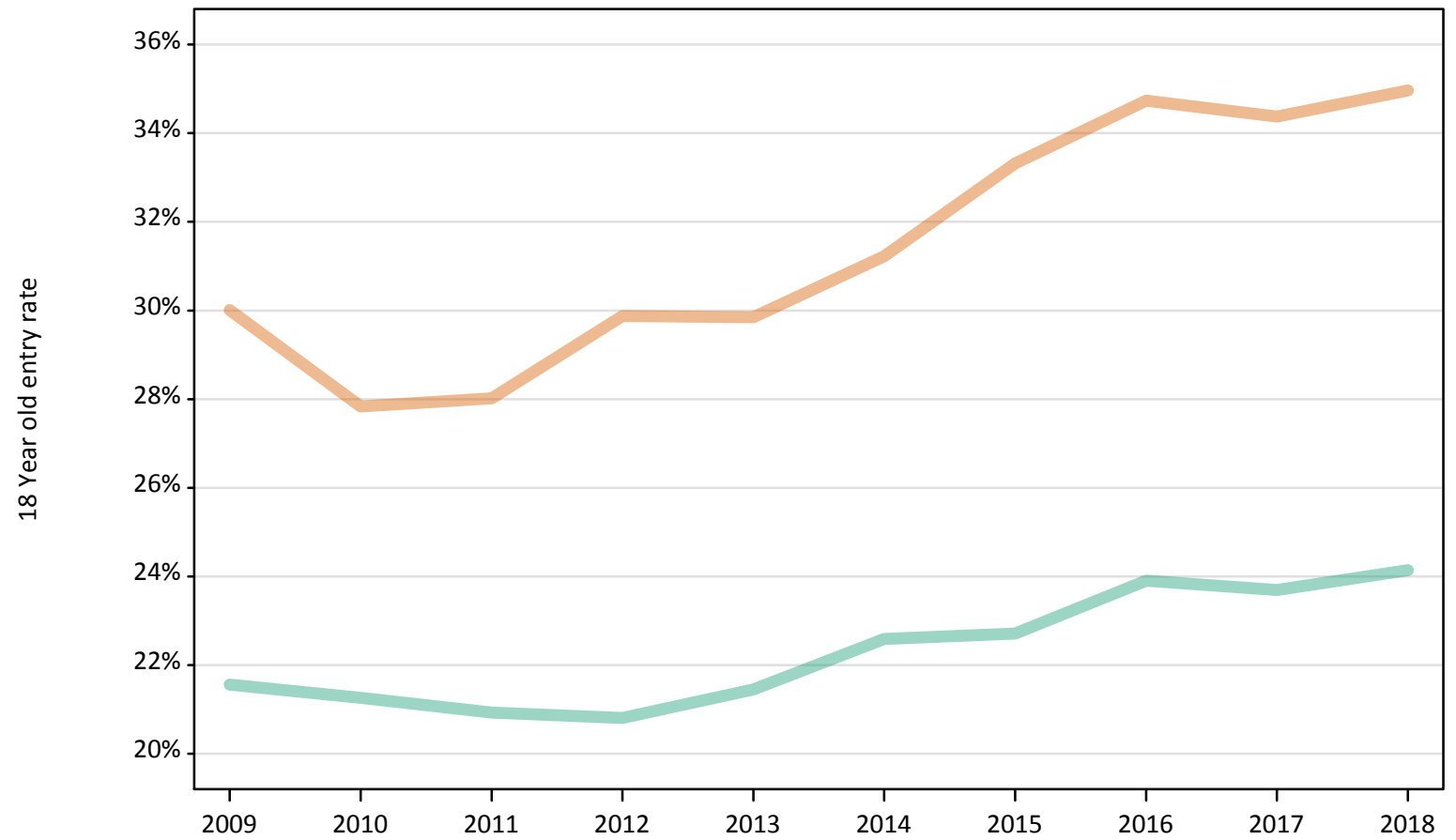
Placed 18 year old applicants: absolute change relative to 2017 cycle totals

Applicant Status	Sex	2009	2010	2011	2012	2013	2014	2015	2016	2017	2018
Placed	Men	170	-60	-210	-200	-150	40	90	130	0	-40
	Women	-100	-430	-640	-340	-460	-270	140	210	0	-110
	All	70	-490	-840	-540	-610	-230	230	340	0	-150

S.57 Placed 18 year old applicants from Wales by sex: 14 days after A level results day

Placed 18 year old applicants: entry rate

Men
Women



S.58 Placed 18 year old applicants from Wales by sex: 14 days after A level results day

Placed 18 year old applicants: entry rate

Applicant Status	Sex	2009	2010	2011	2012	2013	2014	2015	2016	2017	2018
Placed	Men	21.6%	21.3%	20.9%	20.8%	21.4%	22.6%	22.7%	23.9%	23.7%	24.1%
	Women	30.0%	27.8%	28.0%	29.9%	29.8%	31.2%	33.3%	34.7%	34.4%	35.0%
	All	25.6%	24.5%	24.4%	25.2%	25.5%	26.8%	27.9%	29.2%	28.9%	29.4%

S.59 Placed 18 year old applicants from Wales by sex: 14 days after A level results day

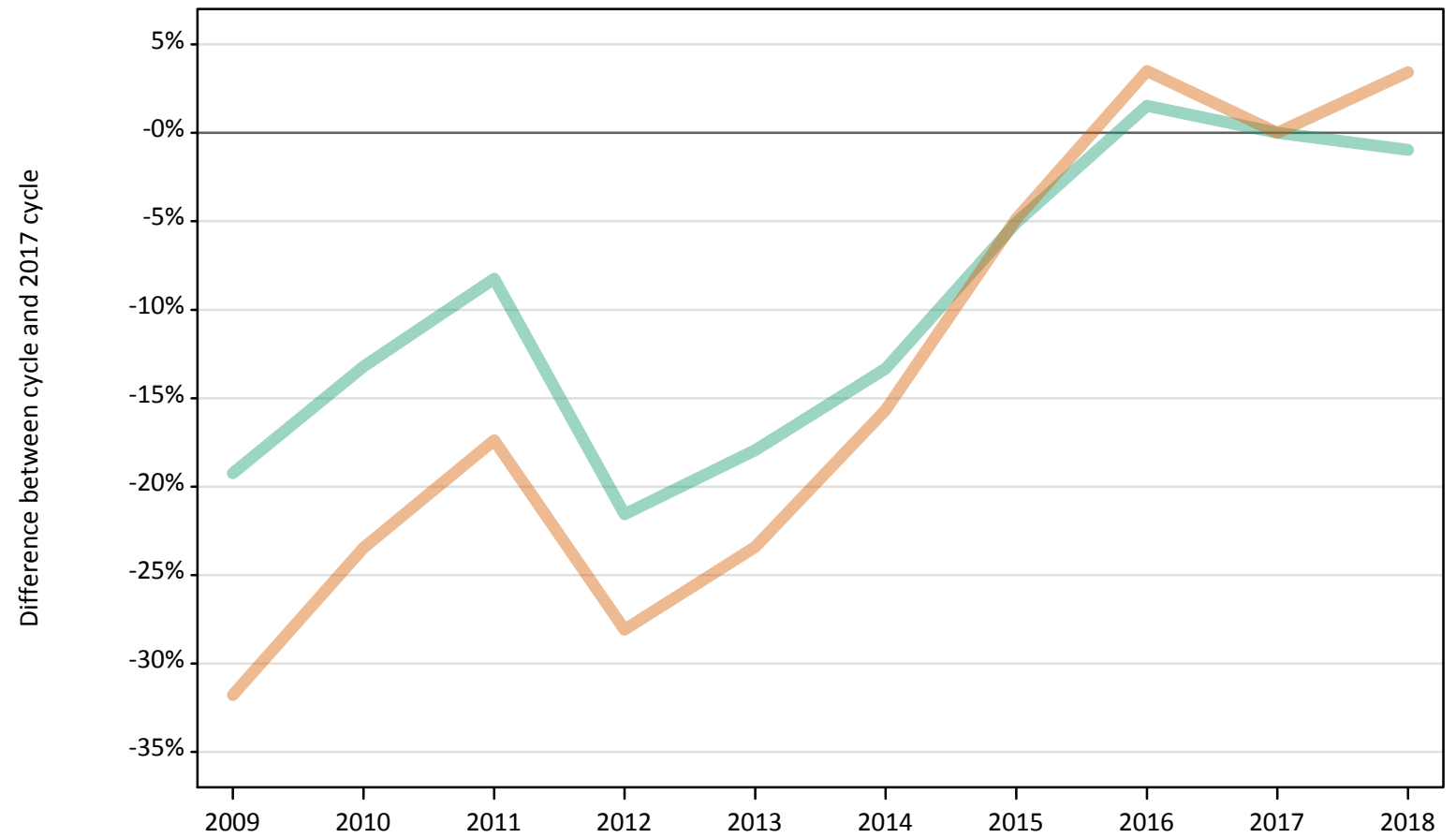
Placed 18 year old applicants: entry rate (indexed to 100 = Men)

Applicant Status	Sex	2009	2010	2011	2012	2013	2014	2015	2016	2017	2018
Placed	Men	100	100	100	100	100	100	100	100	100	100
	Women	139	131	134	144	139	138	147	145	145	145

S.60 Placed applicants from the EU (excluding the UK) by sex: 14 days after A level results day

Placed applicants: change relative to 2017 cycle totals

Men
Women



Note: The percentage change is not plotted in the above chart for groups with fewer than 30 placed applicants in any one cycle.

S.61 Placed applicants from the EU (excluding the UK) by sex: 14 days after A level results day

Applicant Status	Sex	2009	2010	2011	2012	2013	2014	2015	2016	2017	2018
Placed	Men	9,920	10,660	11,270	9,640	10,080	10,650	11,660	12,480	12,290	12,170
	Women	11,430	12,830	13,840	12,050	12,830	14,130	15,940	17,340	16,760	17,330
	All	21,350	23,490	25,120	21,690	22,920	24,780	27,610	29,820	29,040	29,500

S.62 Placed applicants from the EU (excluding the UK) by sex: 14 days after A level results day

Placed applicants: change relative to 2017 cycle totals

Applicant Status	Sex	2009	2010	2011	2012	2013	2014	2015	2016	2017	2018
Placed	Men	-19%	-13%	-8%	-22%	-18%	-13%	-5%	2%	0%	-1%
	Women	-32%	-23%	-17%	-28%	-23%	-16%	-5%	3%	0%	3%
	All	-26%	-19%	-14%	-25%	-21%	-15%	-5%	3%	0%	2%

Note: The percentage change is not recorded in the above table for groups with fewer than 10 placed applicants in that cycle or in the 2017 cycle.

S.63 Placed applicants from the EU (excluding the UK) by sex: 14 days after A level results day

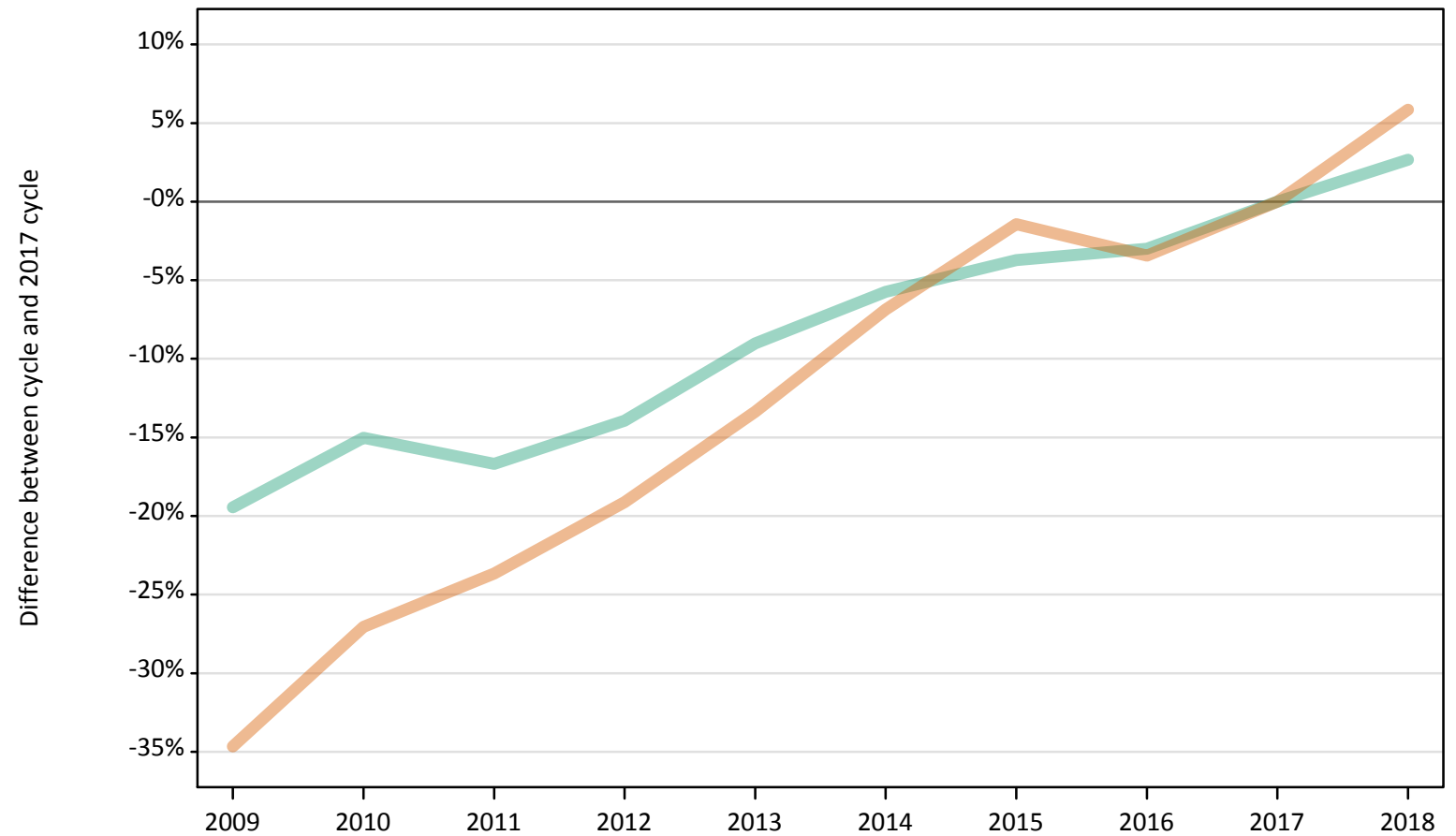
Placed applicants: absolute change relative to 2017 cycle totals

Applicant Status	Sex	2009	2010	2011	2012	2013	2014	2015	2016	2017	2018
Placed	Men	-2,370	-1,620	-1,010	-2,650	-2,200	-1,640	-620	190	0	-120
	Women	-5,330	-3,930	-2,910	-4,710	-3,920	-2,620	-820	590	0	570
	All	-7,690	-5,550	-3,930	-7,360	-6,130	-4,260	-1,440	770	0	460

S.64 Placed applicants from overseas (not EU) by sex: 14 days after A level results day

Placed applicants: change relative to 2017 cycle totals

Men
Women



Note: The percentage change is not plotted in the above chart for groups with fewer than 30 placed applicants in any one cycle.

S.65 Placed applicants from overseas (not EU) by sex: 14 days after A level results day

Applicant Status	Sex	2009	2010	2011	2012	2013	2014	2015	2016	2017	2018
Placed	Men	13,250	13,980	13,710	14,160	14,970	15,510	15,840	15,960	16,450	16,890
	Women	12,380	13,810	14,460	15,320	16,410	17,640	18,670	18,290	18,940	20,050
	All	25,630	27,800	28,160	29,480	31,380	33,150	34,510	34,250	35,390	36,940

S.66 Placed applicants from overseas (not EU) by sex: 14 days after A level results day

Placed applicants: change relative to 2017 cycle totals

Applicant Status	Sex	2009	2010	2011	2012	2013	2014	2015	2016	2017	2018
Placed	Men	-19%	-15%	-17%	-14%	-9%	-6%	-4%	-3%	0%	3%
	Women	-35%	-27%	-24%	-19%	-13%	-7%	-1%	-3%	0%	6%
	All	-28%	-21%	-20%	-17%	-11%	-6%	-3%	-3%	0%	4%

Note: The percentage change is not recorded in the above table for groups with fewer than 10 placed applicants in that cycle or in the 2017 cycle.

S.67 Placed applicants from overseas (not EU) by sex: 14 days after A level results day

Placed applicants: absolute change relative to 2017 cycle totals

Applicant Status	Sex	2009	2010	2011	2012	2013	2014	2015	2016	2017	2018
Placed	Men	-3,200	-2,470	-2,750	-2,290	-1,480	-940	-610	-490	0	440
	Women	-6,560	-5,130	-4,480	-3,620	-2,530	-1,300	-270	-650	0	1,110
	All	-9,760	-7,600	-7,230	-5,920	-4,020	-2,250	-890	-1,140	0	1,550