

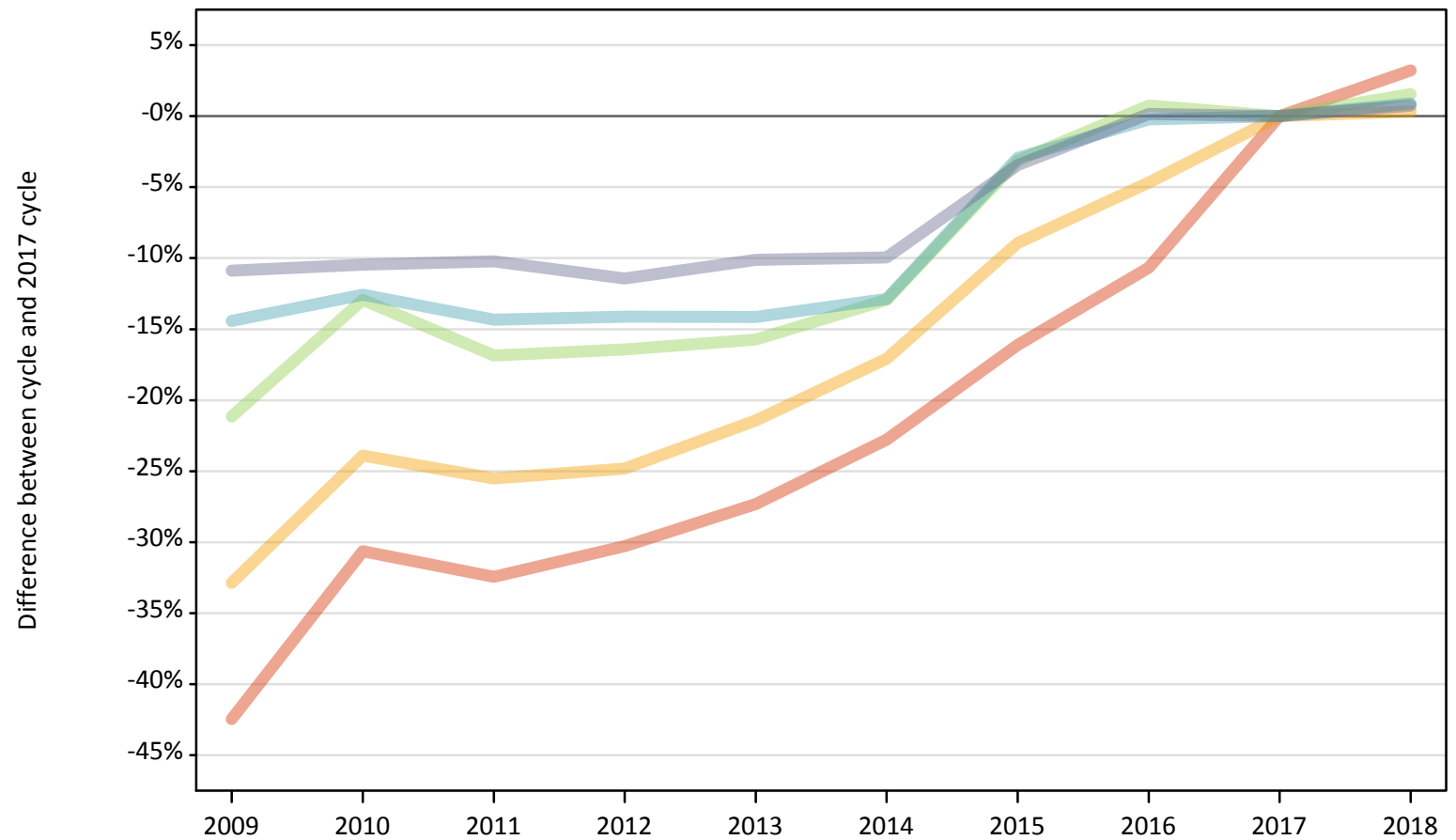
# Daily Clearing Analysis: SIMD16

Analysis at 00:05 on Thursday 30 August 2018 (14 days after A level results day)

## J.1 Placed applicants from Scotland by SIMD16 quintile: 14 days after A level results day

Placed applicants: change relative to 2017 cycle totals

- Quintile 1
- Quintile 2
- Quintile 3
- Quintile 4
- Quintile 5



Note: The percentage change is not plotted in the above chart for groups with fewer than 30 placed applicants in any one cycle.

### J.2 Placed applicants from Scotland by SIMD16 quintile: 14 days after A level results day

| Applicant Status | SIMD16     | 2009  | 2010  | 2011  | 2012  | 2013  | 2014  | 2015  | 2016  | 2017  | 2018  |
|------------------|------------|-------|-------|-------|-------|-------|-------|-------|-------|-------|-------|
| Placed           | Quintile 1 | 2,860 | 3,450 | 3,360 | 3,470 | 3,620 | 3,840 | 4,170 | 4,440 | 4,970 | 5,130 |
|                  | Quintile 2 | 3,630 | 4,110 | 4,020 | 4,060 | 4,250 | 4,480 | 4,920 | 5,150 | 5,400 | 5,420 |
|                  | Quintile 3 | 4,900 | 5,410 | 5,170 | 5,190 | 5,240 | 5,410 | 6,020 | 6,260 | 6,210 | 6,310 |
|                  | Quintile 4 | 6,580 | 6,720 | 6,580 | 6,600 | 6,600 | 6,700 | 7,460 | 7,670 | 7,690 | 7,760 |
|                  | Quintile 5 | 8,740 | 8,790 | 8,810 | 8,690 | 8,820 | 8,830 | 9,470 | 9,830 | 9,810 | 9,880 |

### J.3 Placed applicants from Scotland by SIMD16 quintile: 14 days after A level results day

Placed applicants: change relative to 2017 cycle totals

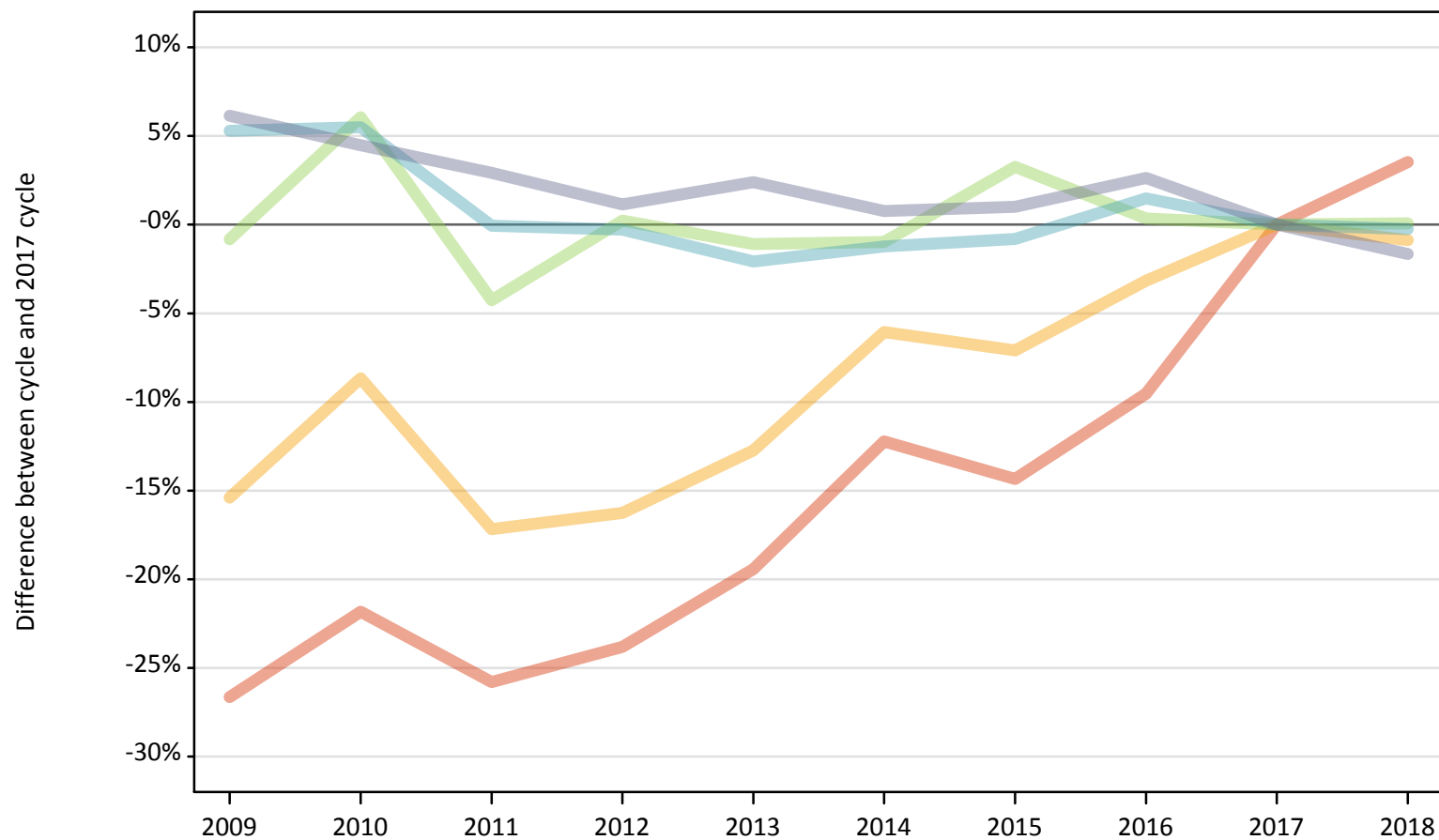
| Applicant Status | SIMD16     | 2009 | 2010 | 2011 | 2012 | 2013 | 2014 | 2015 | 2016 | 2017 | 2018 |
|------------------|------------|------|------|------|------|------|------|------|------|------|------|
| Placed           | Quintile 1 | -42% | -31% | -32% | -30% | -27% | -23% | -16% | -11% | 0%   | 3%   |
|                  | Quintile 2 | -33% | -24% | -26% | -25% | -21% | -17% | -9%  | -5%  | 0%   | 0%   |
|                  | Quintile 3 | -21% | -13% | -17% | -16% | -16% | -13% | -3%  | 1%   | 0%   | 2%   |
|                  | Quintile 4 | -14% | -13% | -14% | -14% | -14% | -13% | -3%  | -0%  | 0%   | 1%   |
|                  | Quintile 5 | -11% | -10% | -10% | -11% | -10% | -10% | -3%  | 0%   | 0%   | 1%   |

Note: The percentage change is not recorded in the above table for groups with fewer than 10 placed applicants in that cycle or in the 2017 cycle.

### J.4 Placed 18 year old applicants from Scotland by SIMD16 quintile: 14 days after A level results day

Placed 18 year old applicants: change relative to 2017 cycle totals

- Quintile 1
- Quintile 2
- Quintile 3
- Quintile 4
- Quintile 5



Note: The percentage change is not plotted in the above chart for groups with fewer than 30 placed applicants in any one cycle.

### J.5 Placed 18 year old applicants from Scotland by SIMD16 quintile: 14 days after A level results day

| Applicant Status | SIMD16     | 2009  | 2010  | 2011  | 2012  | 2013  | 2014  | 2015  | 2016  | 2017  | 2018  |
|------------------|------------|-------|-------|-------|-------|-------|-------|-------|-------|-------|-------|
| Placed           | Quintile 1 | 1,040 | 1,110 | 1,050 | 1,080 | 1,140 | 1,240 | 1,210 | 1,280 | 1,420 | 1,470 |
|                  | Quintile 2 | 1,660 | 1,790 | 1,630 | 1,640 | 1,710 | 1,840 | 1,820 | 1,900 | 1,960 | 1,950 |
|                  | Quintile 3 | 2,560 | 2,730 | 2,470 | 2,580 | 2,550 | 2,550 | 2,660 | 2,590 | 2,580 | 2,580 |
|                  | Quintile 4 | 3,760 | 3,770 | 3,570 | 3,560 | 3,500 | 3,530 | 3,540 | 3,620 | 3,570 | 3,560 |
|                  | Quintile 5 | 5,420 | 5,330 | 5,250 | 5,160 | 5,230 | 5,140 | 5,150 | 5,240 | 5,100 | 5,020 |

### J.6 Placed 18 year old applicants from Scotland by SIMD16 quintile: 14 days after A level results day

Placed 18 year old applicants: change relative to 2017 cycle totals

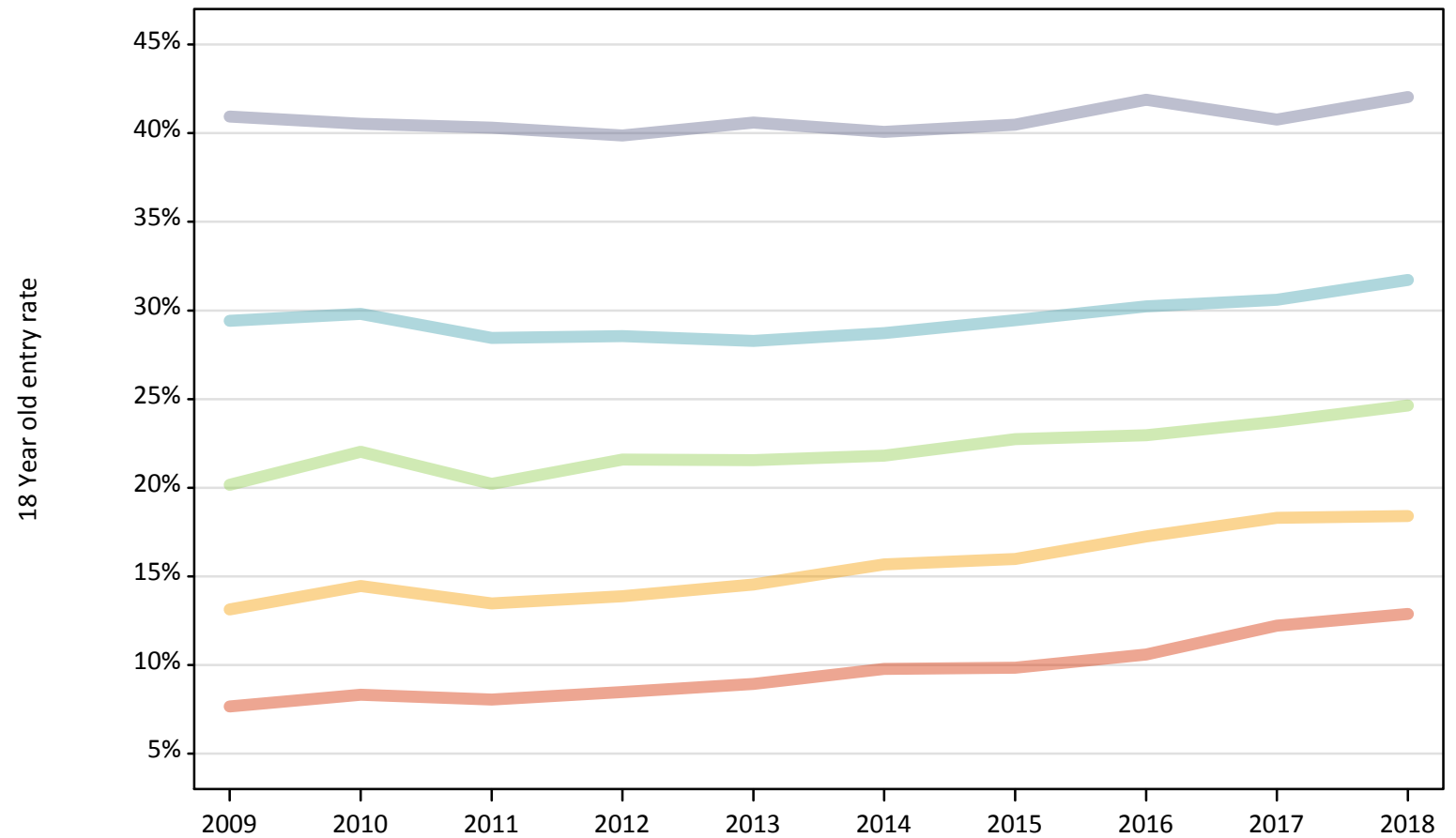
| Applicant Status | SIMD16     | 2009 | 2010 | 2011 | 2012 | 2013 | 2014 | 2015 | 2016 | 2017 | 2018 |
|------------------|------------|------|------|------|------|------|------|------|------|------|------|
| Placed           | Quintile 1 | -27% | -22% | -26% | -24% | -19% | -12% | -14% | -10% | 0%   | 4%   |
|                  | Quintile 2 | -15% | -9%  | -17% | -16% | -13% | -6%  | -7%  | -3%  | 0%   | -1%  |
|                  | Quintile 3 | -1%  | 6%   | -4%  | 0%   | -1%  | -1%  | 3%   | 0%   | 0%   | 0%   |
|                  | Quintile 4 | 5%   | 5%   | -0%  | -0%  | -2%  | -1%  | -1%  | 1%   | 0%   | -0%  |
|                  | Quintile 5 | 6%   | 4%   | 3%   | 1%   | 2%   | 1%   | 1%   | 3%   | 0%   | -2%  |

Note: The percentage change is not recorded in the above table for groups with fewer than 10 placed applicants in that cycle or in the 2017 cycle.

### J.7 Placed 18 year old applicants from Scotland by SIMD16 quintile: 14 days after A level results day

Placed 18 year old applicants: entry rate

- Quintile 1
- Quintile 2
- Quintile 3
- Quintile 4
- Quintile 5



**J.8 Placed 18 year old applicants from Scotland by SIMD16 quintile: 14 days after A level results day**

Placed 18 year old applicants: entry rate

| Applicant Status | SIMD16     | 2009  | 2010  | 2011  | 2012  | 2013  | 2014  | 2015  | 2016  | 2017  | 2018  |
|------------------|------------|-------|-------|-------|-------|-------|-------|-------|-------|-------|-------|
| Placed           | Quintile 1 | 7.7%  | 8.3%  | 8.1%  | 8.5%  | 8.9%  | 9.8%  | 9.8%  | 10.6% | 12.2% | 12.9% |
|                  | Quintile 2 | 13.1% | 14.5% | 13.5% | 13.9% | 14.5% | 15.7% | 16.0% | 17.3% | 18.3% | 18.4% |
|                  | Quintile 3 | 20.2% | 22.0% | 20.2% | 21.6% | 21.6% | 21.8% | 22.7% | 23.0% | 23.7% | 24.6% |
|                  | Quintile 4 | 29.4% | 29.8% | 28.5% | 28.6% | 28.3% | 28.7% | 29.5% | 30.2% | 30.6% | 31.7% |
|                  | Quintile 5 | 40.9% | 40.5% | 40.3% | 39.9% | 40.6% | 40.1% | 40.5% | 41.9% | 40.8% | 42.0% |

**J.9 Placed 18 year old applicants from Scotland by SIMD16 quintile: 14 days after A level results day**

Placed 18 year old applicants: entry rate (indexed to 100 = Quintile 1)

| Applicant Status | SIMD16     | 2009 | 2010 | 2011 | 2012 | 2013 | 2014 | 2015 | 2016 | 2017 | 2018 |
|------------------|------------|------|------|------|------|------|------|------|------|------|------|
| Placed           | Quintile 1 | 100  | 100  | 100  | 100  | 100  | 100  | 100  | 100  | 100  | 100  |
|                  | Quintile 2 | 172  | 174  | 167  | 164  | 163  | 160  | 162  | 163  | 150  | 143  |
|                  | Quintile 3 | 263  | 265  | 251  | 255  | 241  | 223  | 231  | 217  | 194  | 191  |
|                  | Quintile 4 | 384  | 358  | 353  | 337  | 316  | 294  | 299  | 285  | 251  | 246  |
|                  | Quintile 5 | 534  | 487  | 501  | 471  | 454  | 410  | 411  | 395  | 334  | 326  |