

Daily Clearing Analysis: Age

Analysis at 00:05 on Thursday 30 August 2018 (14 days after A level results day)

C.1 Placed applicants by country of domicile and age group, 2018 cycle (14 days after A level results day)

Domicile of applicant	Age group				
	17 and under	18	19	20 to 24	25 and over
England	680	203,150	67,760	48,220	29,450
Northern Ireland	30	8,190	2,390	2,440	810
Scotland	510	14,610	4,570	8,320	6,620
Wales	30	10,120	3,320	2,780	2,180
UK	1,250	236,070	78,030	61,750	39,070

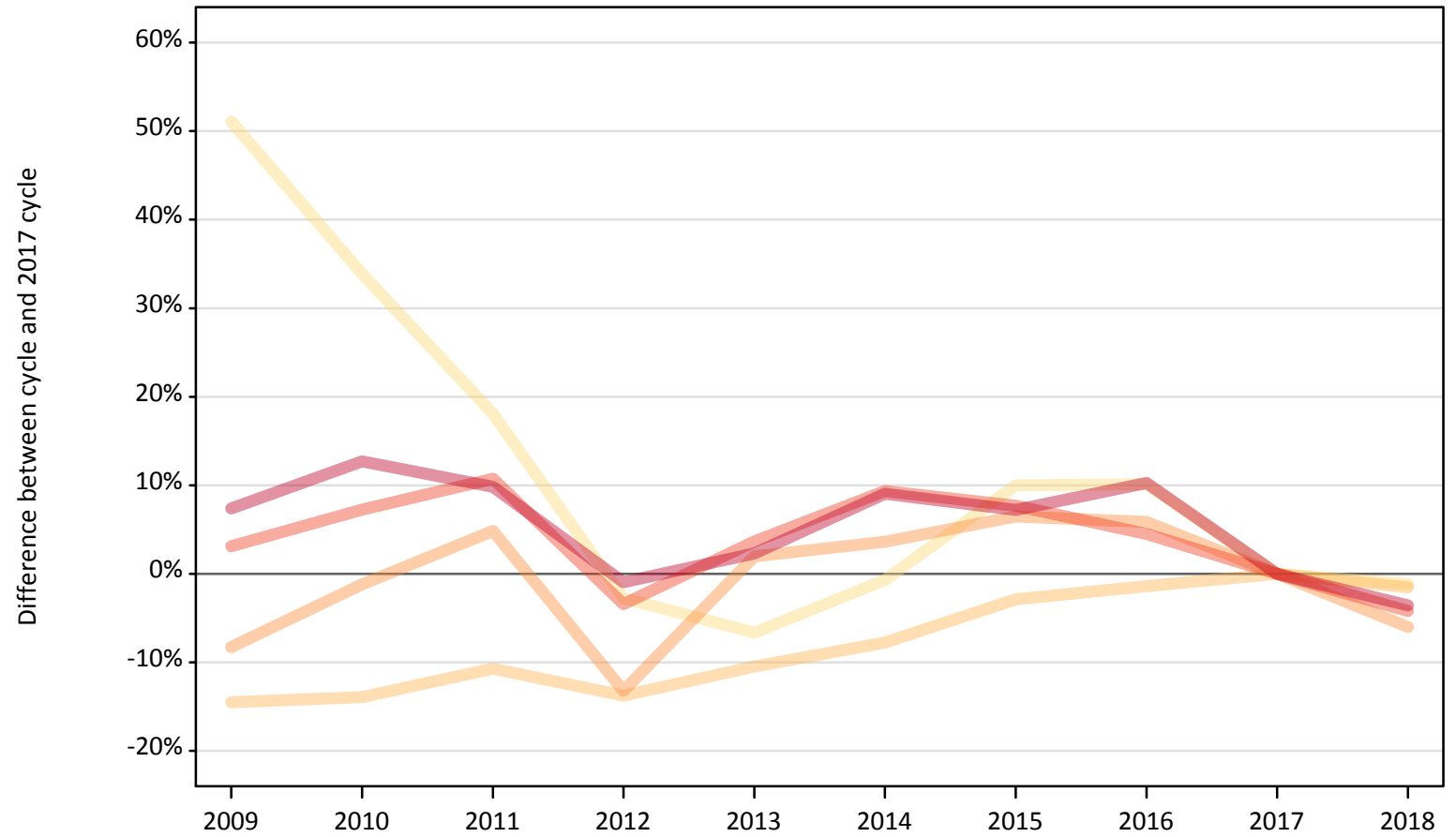
C.2 Proportion of 18 year old population placed by country of domicile, 2018 cycle (14 days after A level results day)

Domicile of applicant	Age group	2018
England	18	33.3%
Northern Ireland	18	35.3%
Scotland	18	26.3%
Wales	18	29.4%

C.3 Placed applicants from England by age group at 14 days after A level results day

Selected age groups: difference between cycle and 2017 cycle

- 17 and under
- 18
- 19
- 20 to 24
- 25 and over



Note: The percentage change is not plotted in the above chart for groups with fewer than 30 placed applicants in any one cycle.

C.4 Placed applicants from England by age group at 14 days after A level results day

All age groups

Domicile of applicant	Age group	2009	2010	2011	2012	2013	2014	2015	2016	2017	2018
England	17 and under	1,040	930	820	670	650	690	760	760	690	680
	18	176,340	177,560	184,210	177,900	184,650	190,300	200,330	203,430	206,300	203,150
	19	66,120	71,240	75,570	62,560	73,500	74,700	76,740	76,320	72,090	67,760
	20 to 24	51,900	53,990	55,750	48,610	52,180	55,050	54,200	52,600	50,340	48,220
	25 and over	32,800	34,430	33,540	30,260	31,250	33,300	32,750	33,680	30,540	29,450

C.5 Placed applicants from England by age group at 14 days after A level results day

Selected age groups: difference between cycle and 2017 cycle

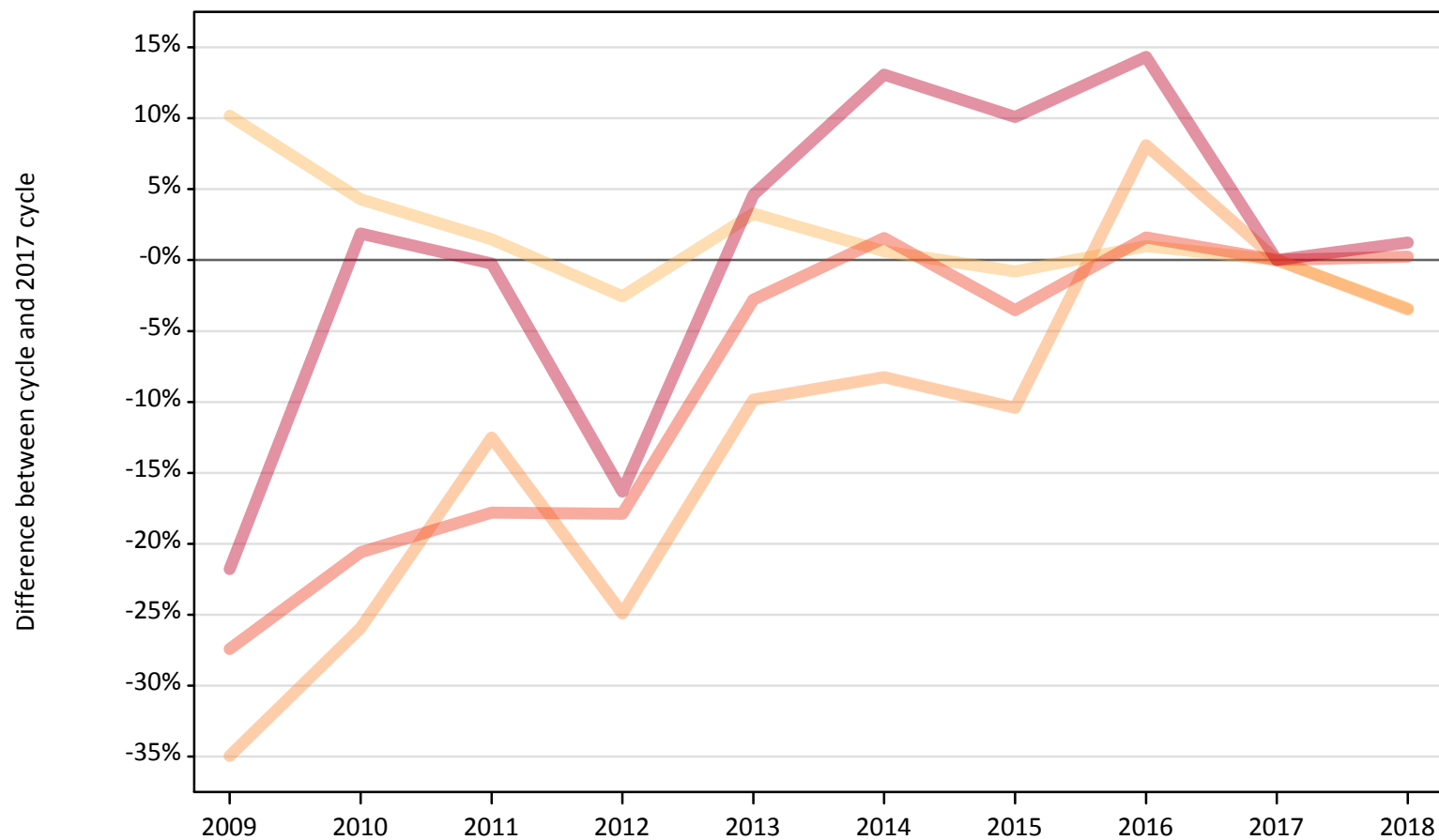
Domicile of applicant	Age group	2009	2010	2011	2012	2013	2014	2015	2016	2017	2018
England	17 and under	51%	34%	18%	-3%	-7%	-1%	10%	10%	0%	-1%
	18	-15%	-14%	-11%	-14%	-10%	-8%	-3%	-1%	0%	-2%
	19	-8%	-1%	5%	-13%	2%	4%	6%	6%	0%	-6%
	20 to 24	3%	7%	11%	-3%	4%	9%	8%	4%	0%	-4%
	25 and over	7%	13%	10%	-1%	2%	9%	7%	10%	0%	-4%

Note: The percentage change is not recorded in the above table for groups with fewer than 10 placed applicants in that cycle or in the 2017 cycle.

C.6 Placed applicants from Northern Ireland by age group at 14 days after A level results day

Selected age groups: difference between cycle and 2017 cycle

- 17 and under
- 18
- 19
- 20 to 24
- 25 and over



Note: The percentage change is not plotted in the above chart for groups with fewer than 30 placed applicants in any one cycle.

C.7 Placed applicants from Northern Ireland by age group at 14 days after A level results day

All age groups

Domicile of applicant	Age group	2009	2010	2011	2012	2013	2014	2015	2016	2017	2018
Northern Ireland	17 and under	50	40	40	40	20	20	20	30	20	30
	18	9,340	8,840	8,600	8,260	8,760	8,530	8,410	8,560	8,480	8,190
	19	1,610	1,830	2,160	1,860	2,230	2,270	2,210	2,670	2,470	2,390
	20 to 24	1,770	1,930	2,000	2,000	2,360	2,470	2,350	2,470	2,430	2,440
	25 and over	630	820	800	670	840	910	880	920	800	810

C.8 Placed applicants from Northern Ireland by age group at 14 days after A level results day

Selected age groups: difference between cycle and 2017 cycle

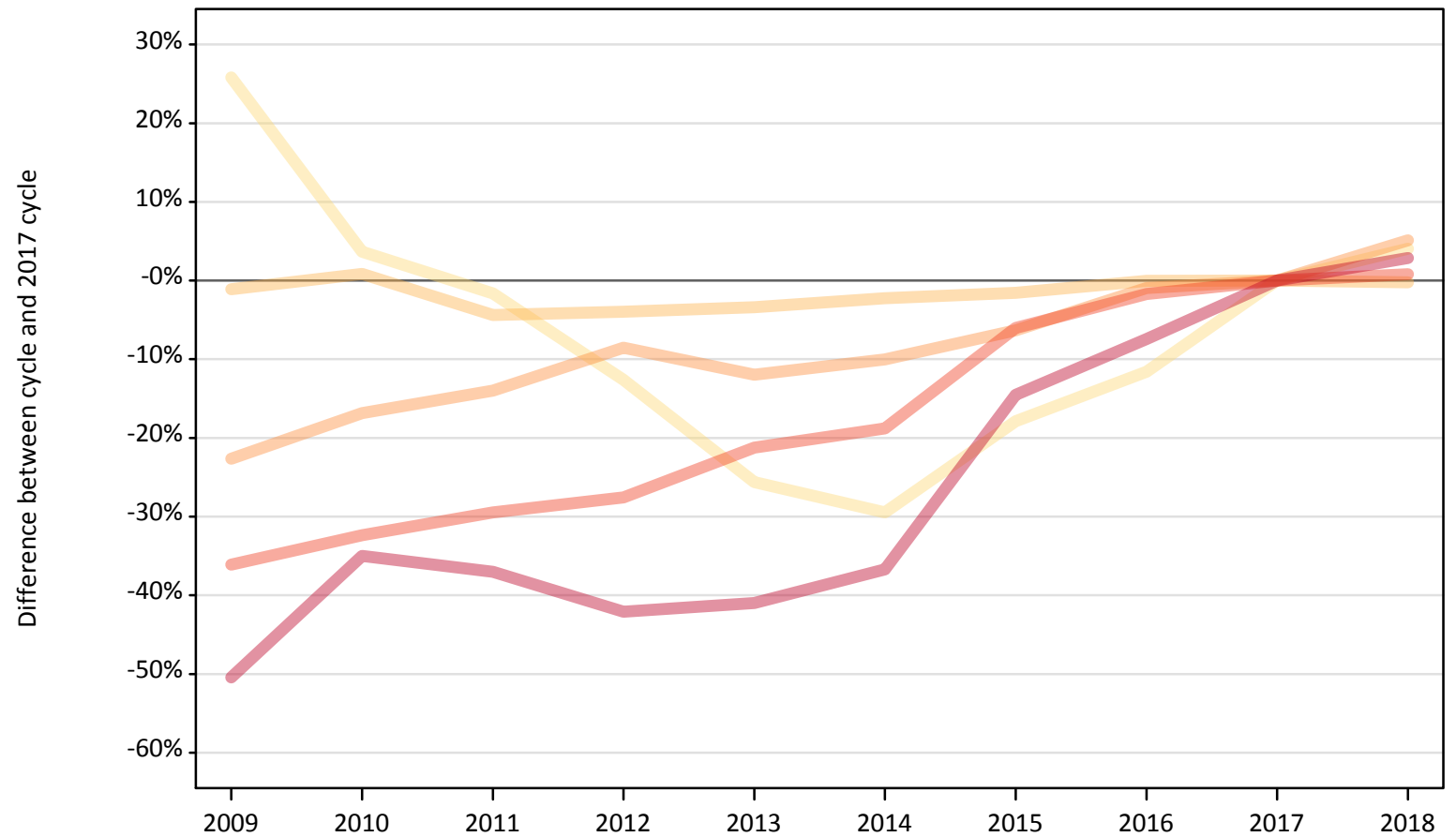
Domicile of applicant	Age group	2009	2010	2011	2012	2013	2014	2015	2016	2017	2018
Northern Ireland	17 and under	189%	117%	106%	133%	22%	17%	0%	67%	0%	44%
	18	10%	4%	1%	-3%	3%	1%	-1%	1%	0%	-3%
	19	-35%	-26%	-13%	-25%	-10%	-8%	-10%	8%	0%	-3%
	20 to 24	-27%	-21%	-18%	-18%	-3%	2%	-4%	2%	0%	0%
	25 and over	-22%	2%	-0%	-16%	5%	13%	10%	14%	0%	1%

Note: The percentage change is not recorded in the above table for groups with fewer than 10 placed applicants in that cycle or in the 2017 cycle.

C.9 Placed applicants from Scotland by age group at 14 days after A level results day

Selected age groups: difference between cycle and 2017 cycle

- 17 and under
- 18
- 19
- 20 to 24
- 25 and over



Note: The percentage change is not plotted in the above chart for groups with fewer than 30 placed applicants in any one cycle.

C.10 Placed applicants from Scotland by age group at 14 days after A level results day

All age groups

Domicile of applicant	Age group	2009	2010	2011	2012	2013	2014	2015	2016	2017	2018
Scotland	17 and under	620	510	480	430	370	350	400	440	490	510
	18	14,480	14,770	14,000	14,060	14,150	14,320	14,420	14,640	14,640	14,610
	19	3,360	3,610	3,740	3,980	3,830	3,910	4,070	4,300	4,350	4,570
	20 to 24	5,270	5,580	5,820	5,980	6,500	6,700	7,760	8,110	8,250	8,320
	25 and over	3,190	4,180	4,050	3,730	3,800	4,070	5,500	5,960	6,430	6,620

C.11 Placed applicants from Scotland by age group at 14 days after A level results day

Selected age groups: difference between cycle and 2017 cycle

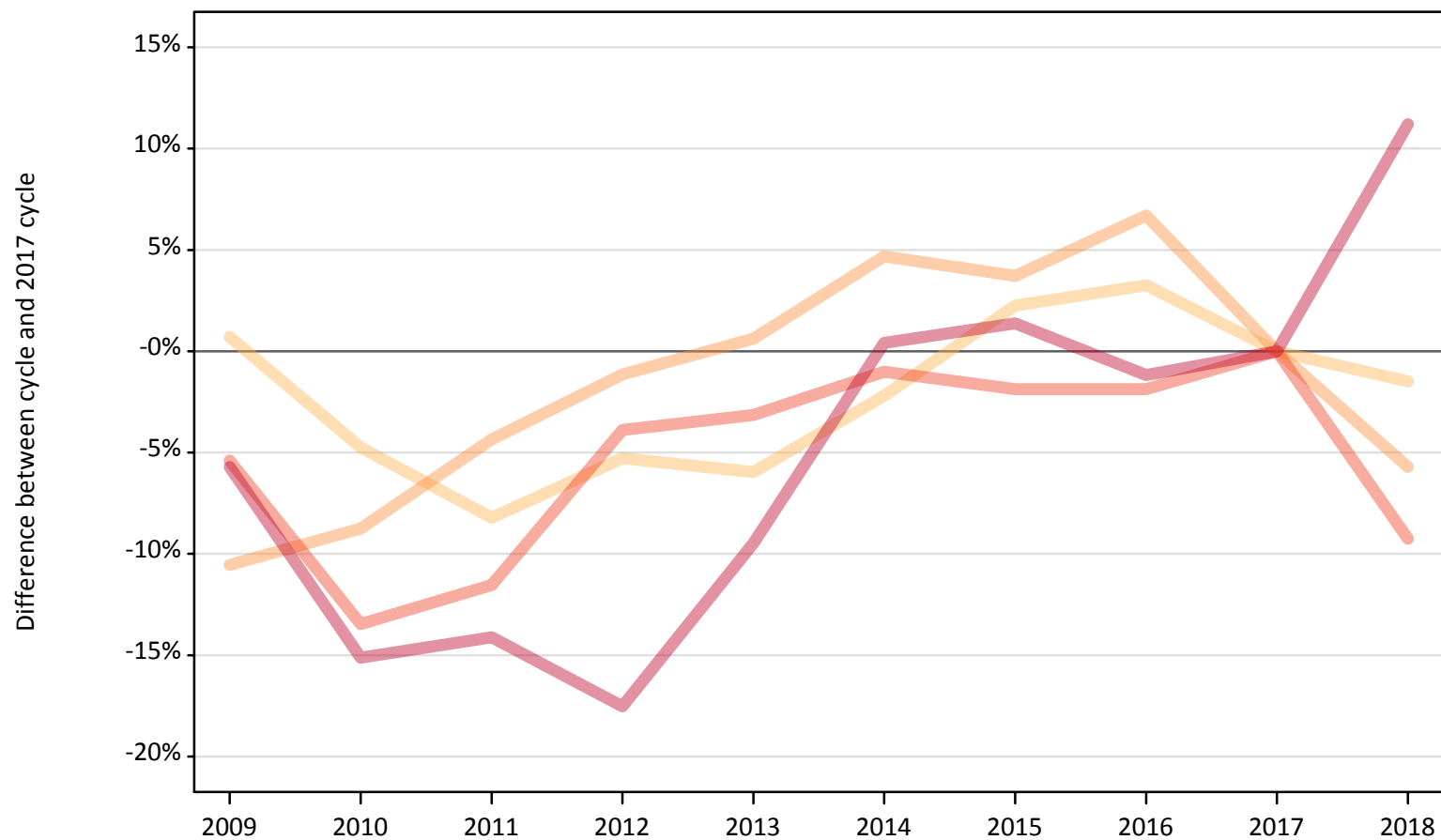
Domicile of applicant	Age group	2009	2010	2011	2012	2013	2014	2015	2016	2017	2018
Scotland	17 and under	26%	4%	-2%	-13%	-26%	-29%	-18%	-12%	0%	4%
	18	-1%	1%	-4%	-4%	-3%	-2%	-2%	-0%	0%	-0%
	19	-23%	-17%	-14%	-9%	-12%	-10%	-6%	-1%	0%	5%
	20 to 24	-36%	-32%	-29%	-28%	-21%	-19%	-6%	-2%	0%	1%
	25 and over	-50%	-35%	-37%	-42%	-41%	-37%	-15%	-7%	0%	3%

Note: The percentage change is not recorded in the above table for groups with fewer than 10 placed applicants in that cycle or in the 2017 cycle.

C.12 Placed applicants from Wales by age group at 14 days after A level results day

Selected age groups: difference between cycle and 2017 cycle

- 17 and under
- 18
- 19
- 20 to 24
- 25 and over



Note: The percentage change is not plotted in the above chart for groups with fewer than 30 placed applicants in any one cycle.

C.13 Placed applicants from Wales by age group at 14 days after A level results day

All age groups

Domicile of applicant	Age group	2009	2010	2011	2012	2013	2014	2015	2016	2017	2018
Wales	17 and under	50	30	30	20	30	20	20	20	20	30
	18	10,340	9,780	9,430	9,730	9,660	10,040	10,500	10,600	10,270	10,120
	19	3,150	3,210	3,370	3,480	3,540	3,680	3,650	3,760	3,520	3,320
	20 to 24	2,890	2,650	2,710	2,940	2,960	3,030	3,000	3,000	3,060	2,780
	25 and over	1,850	1,670	1,690	1,620	1,780	1,970	1,990	1,940	1,960	2,180

C.14 Placed applicants from Wales by age group at 14 days after A level results day

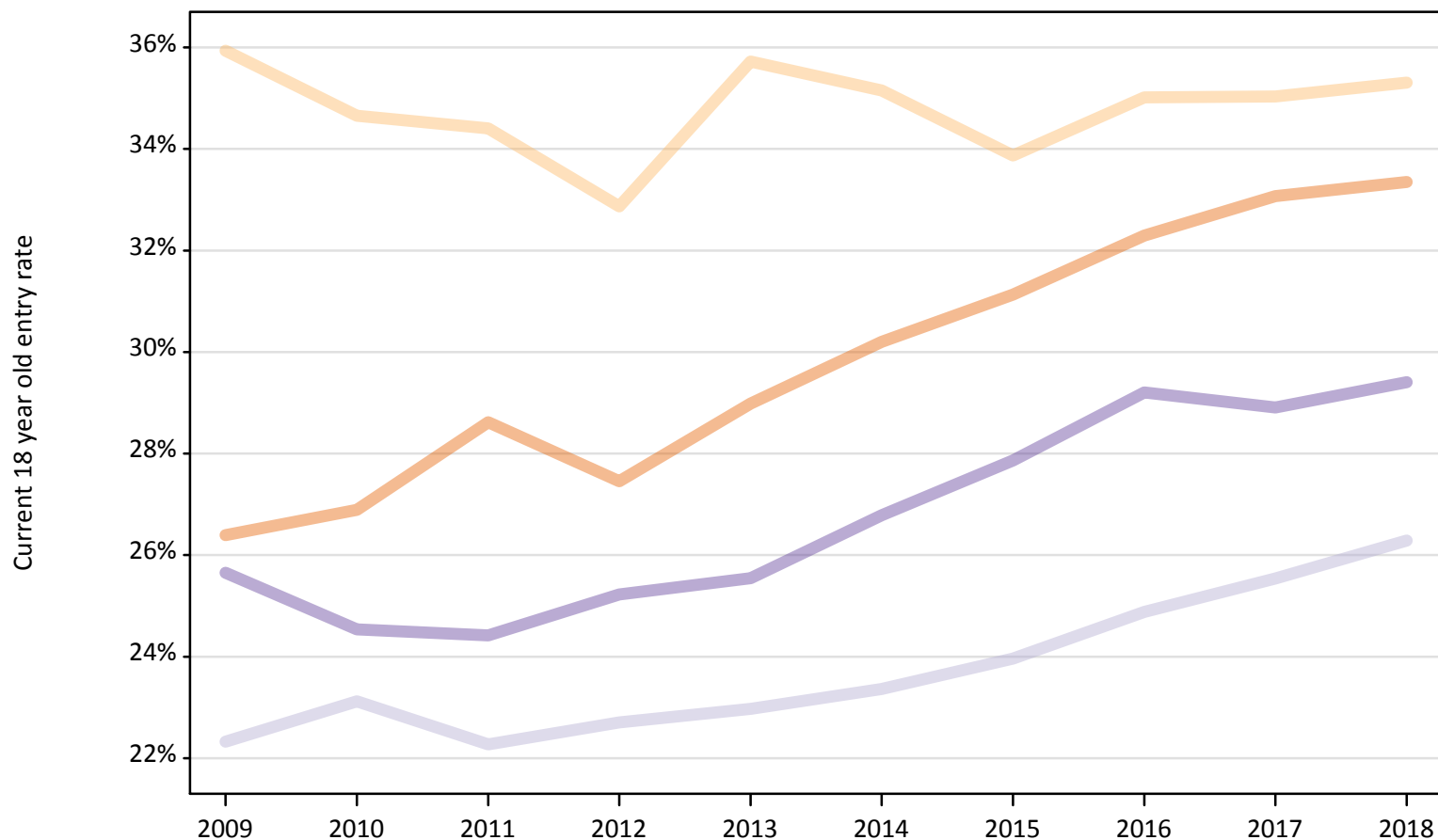
Selected age groups: difference between cycle and 2017 cycle

Domicile of applicant	Age group	2009	2010	2011	2012	2013	2014	2015	2016	2017	2018
Wales	17 and under	165%	100%	94%	24%	76%	29%	6%	35%	0%	47%
	18	1%	-5%	-8%	-5%	-6%	-2%	2%	3%	0%	-1%
	19	-11%	-9%	-4%	-1%	1%	5%	4%	7%	0%	-6%
	20 to 24	-5%	-13%	-12%	-4%	-3%	-1%	-2%	-2%	0%	-9%
	25 and over	-6%	-15%	-14%	-18%	-9%	0%	1%	-1%	0%	11%

Note: The percentage change is not recorded in the above table for groups with fewer than 10 placed applicants in that cycle or in the 2017 cycle.

C.15 Entry rates for 18 year olds by UK country of domicile: 14 days after A level results day

Placed 18 year old applicants as a proportion of the 18 year old population



C.16 Entry rates for 18 year olds by UK country of domicile: 14 days after A level results day

Placed 18 year old applicants as a proportion of the 18 year old population

Domicile of applicant	Age group	2009	2010	2011	2012	2013	2014	2015	2016	2017	2018
England	18	26.4%	26.9%	28.6%	27.5%	29.0%	30.2%	31.1%	32.3%	33.1%	33.3%
Northern Ireland	18	35.9%	34.7%	34.4%	32.9%	35.7%	35.2%	33.9%	35.0%	35.0%	35.3%
Scotland	18	22.3%	23.1%	22.3%	22.7%	23.0%	23.4%	24.0%	24.9%	25.5%	26.3%
Wales	18	25.6%	24.5%	24.4%	25.2%	25.5%	26.8%	27.9%	29.2%	28.9%	29.4%