

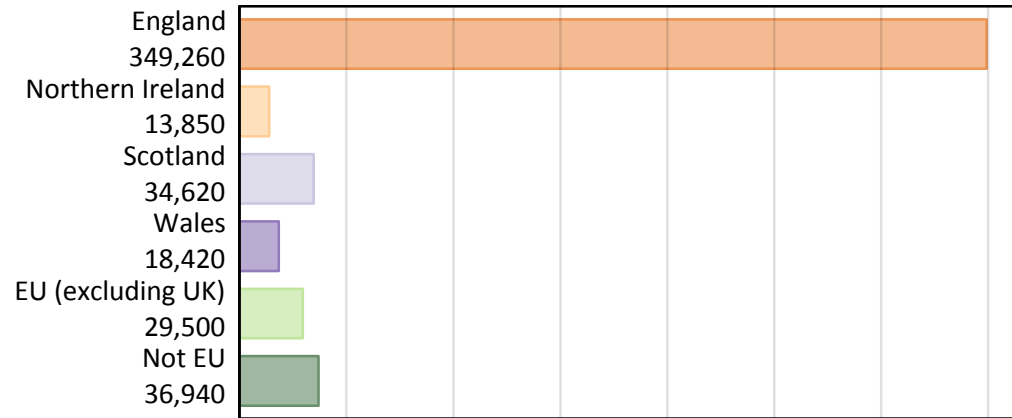
Daily Clearing Analysis: Country

Analysis at 00:05 on Thursday 30 August 2018 (14 days after A level results day)

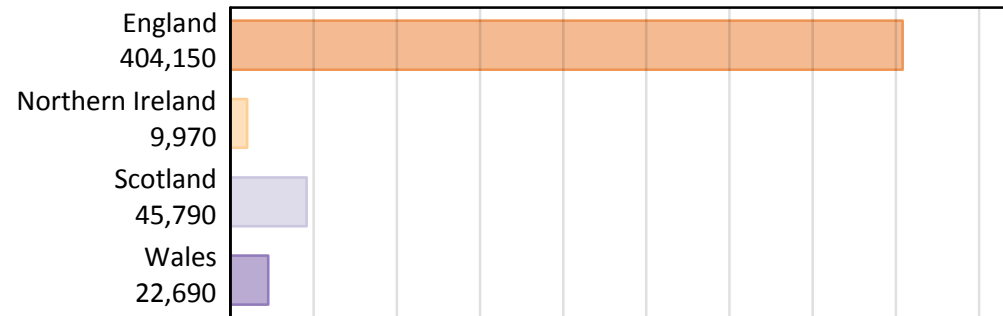
B.1 Placed applicants by country of provider and domicile, 2018 cycle

Domicile of applicant	Country of provider				
	England	Northern Ireland	Scotland	Wales	UK
England	334,490	320	4,590	9,860	349,260
Northern Ireland	3,780	8,950	980	140	13,850
Scotland	1,470	30	33,080	40	34,620
Wales	7,750	10	140	10,520	18,420
EU (excluding UK)	23,950	390	4,050	1,110	29,500
Not EU	32,710	270	2,950	1,010	36,940
All	404,150	9,970	45,790	22,690	482,590

B.2 Placed applicants by domicile group



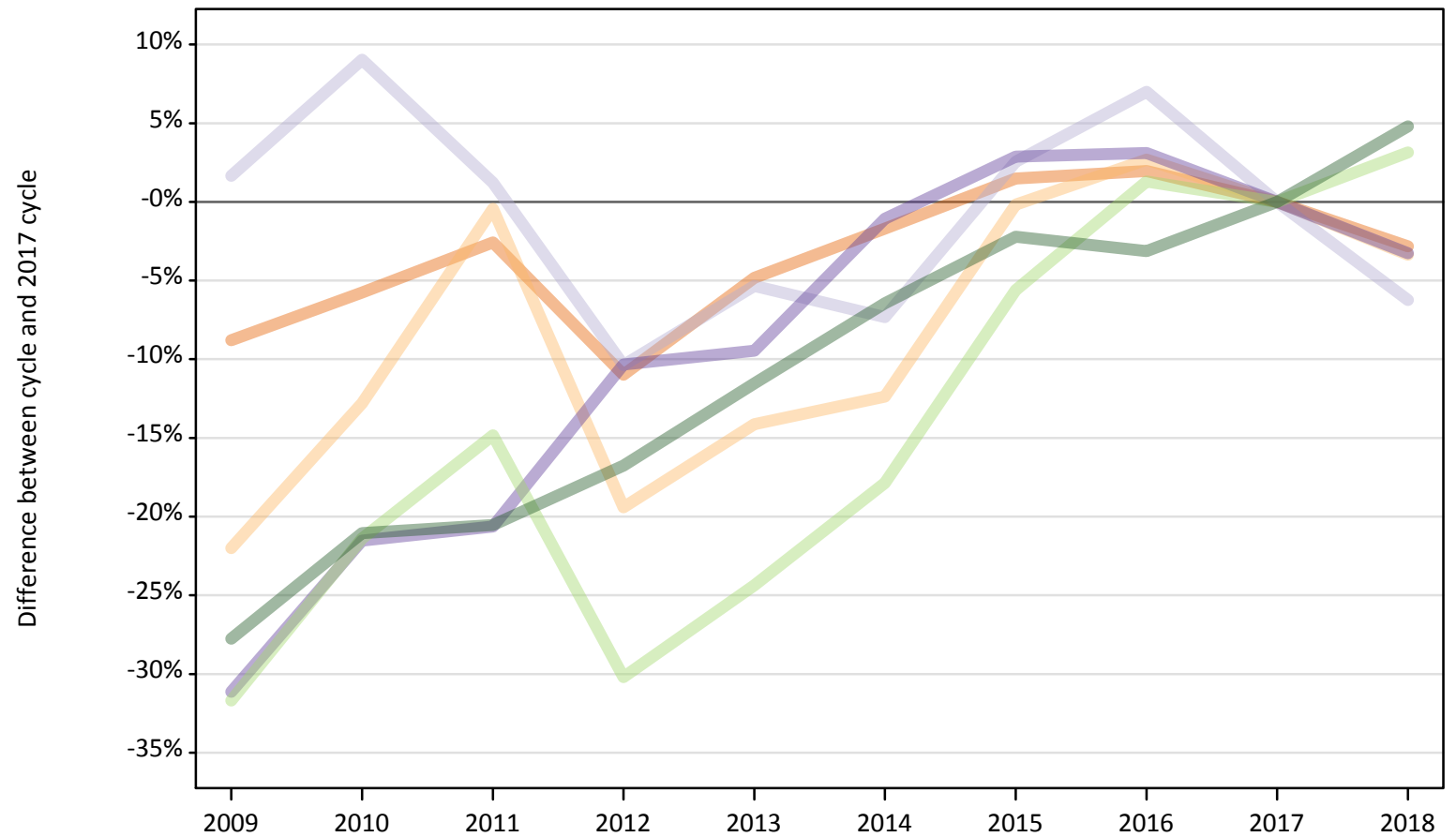
B.3 Placed applicants by country of provider



B.4 Placed applicants at 14 days after A level results day: providers in England

Selected applicant domiciles: difference between cycle and 2017 cycle (at 14 days after A level results day)

- England
- Northern Ireland
- Scotland
- Wales
- EU (excluding UK)
- Not EU



Note: The percentage change is not plotted in the above chart for groups with fewer than 30 placed applicants in any one cycle.

B.5 Placed applicants at 14 days after A level results day: providers in England

Placed applicants by domicile (at 14 days after A level results day)

Domicile of applicant	2009	2010	2011	2012	2013	2014	2015	2016	2017	2018
England	313,930	324,370	335,300	306,370	327,600	338,320	349,290	350,920	344,200	334,490
Northern Ireland	3,050	3,410	3,890	3,150	3,350	3,420	3,900	4,010	3,910	3,780
Scotland	1,600	1,710	1,590	1,410	1,490	1,460	1,610	1,680	1,570	1,470
Wales	5,520	6,280	6,360	7,180	7,250	7,920	8,240	8,260	8,010	7,750
EU (excluding UK)	15,870	18,260	19,780	16,210	17,560	19,080	21,920	23,520	23,220	23,950
Not EU	22,550	24,640	24,800	25,980	27,610	29,200	30,520	30,240	31,210	32,710

B.6 Placed applicants at 14 days after A level results day: providers in England

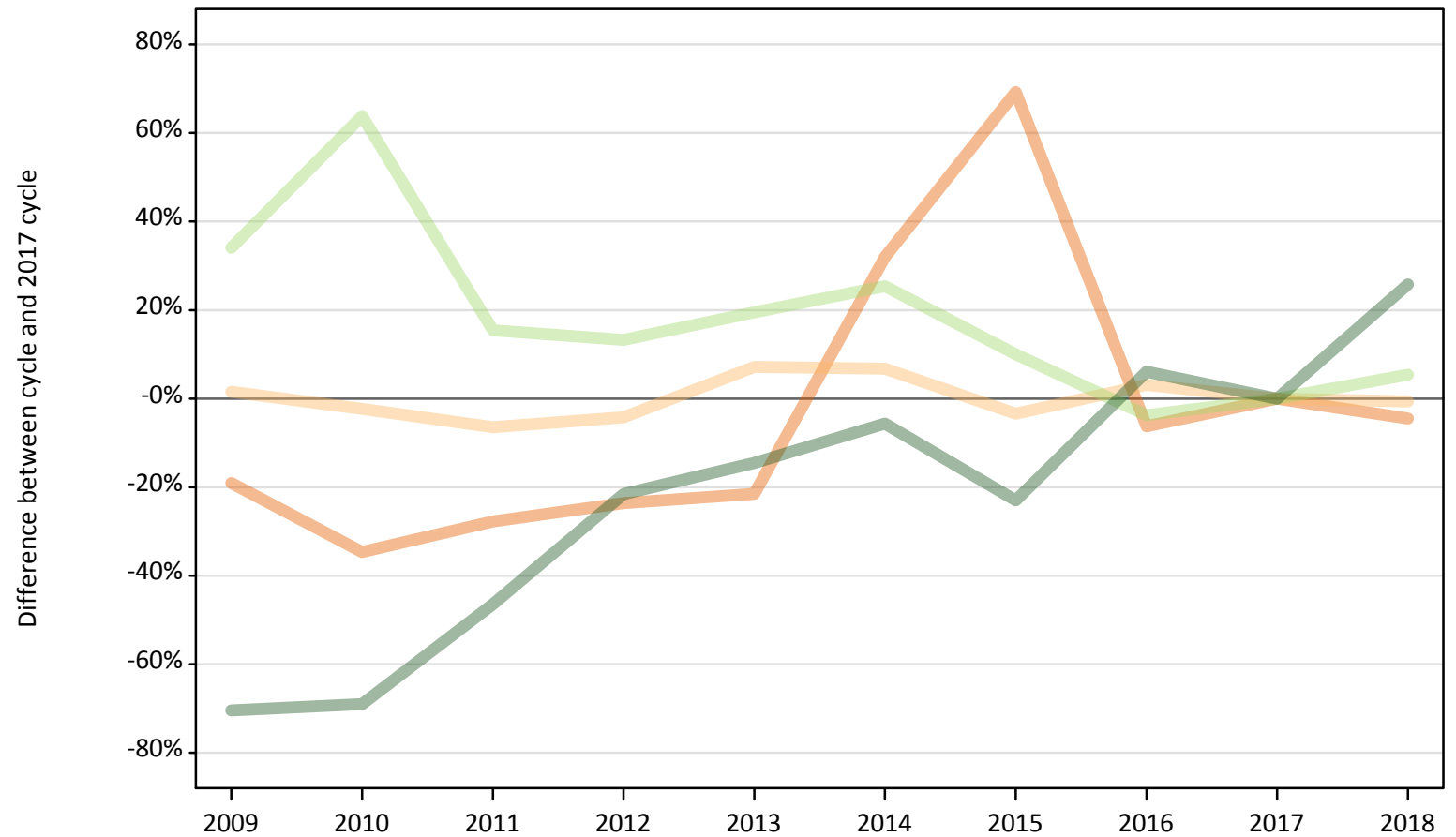
Selected applicant domiciles: difference between cycle and 2017 cycle (at 14 days after A level results day)

Domicile of applicant	2009	2010	2011	2012	2013	2014	2015	2016	2017	2018
England	-9%	-6%	-3%	-11%	-5%	-2%	1%	2%	0%	-3%
Northern Ireland	-22%	-13%	-0%	-19%	-14%	-12%	-0%	3%	0%	-3%
Scotland	2%	9%	1%	-10%	-5%	-7%	3%	7%	0%	-6%
Wales	-31%	-22%	-21%	-10%	-9%	-1%	3%	3%	0%	-3%
EU (excluding UK)	-32%	-21%	-15%	-30%	-24%	-18%	-6%	1%	0%	3%
Not EU	-28%	-21%	-21%	-17%	-12%	-6%	-2%	-3%	0%	5%

Note: The percentage change is not recorded in the above table for groups with fewer than 10 placed applicants in that cycle or in the 2017 cycle.

B.7 Placed applicants at 14 days after A level results day: providers in Northern Ireland
Selected applicant domiciles: difference between cycle and 2017 cycle (at 14 days after A level results day)

- England
- Northern Ireland
- Scotland
- Wales
- EU (excluding UK)
- Not EU



Note: The percentage change is not plotted in the above chart for groups with fewer than 30 placed applicants in any one cycle.

B.8 Placed applicants at 14 days after A level results day: providers in Northern Ireland

Placed applicants by domicile (at 14 days after A level results day)

Domicile of applicant	2009	2010	2011	2012	2013	2014	2015	2016	2017	2018
England	270	220	240	260	260	440	570	310	340	320
Northern Ireland	9,150	8,800	8,430	8,630	9,660	9,620	8,710	9,290	9,010	8,950
Scotland	20	20	20	30	10	20	20	20	30	30
Wales	10	10	10	0	10	10	10	10	10	10
EU (excluding UK)	500	610	430	420	440	460	410	360	370	390
Not EU	60	70	110	170	180	200	160	230	210	270

B.9 Placed applicants at 14 days after A level results day: providers in Northern Ireland

Selected applicant domiciles: difference between cycle and 2017 cycle (at 14 days after A level results day)

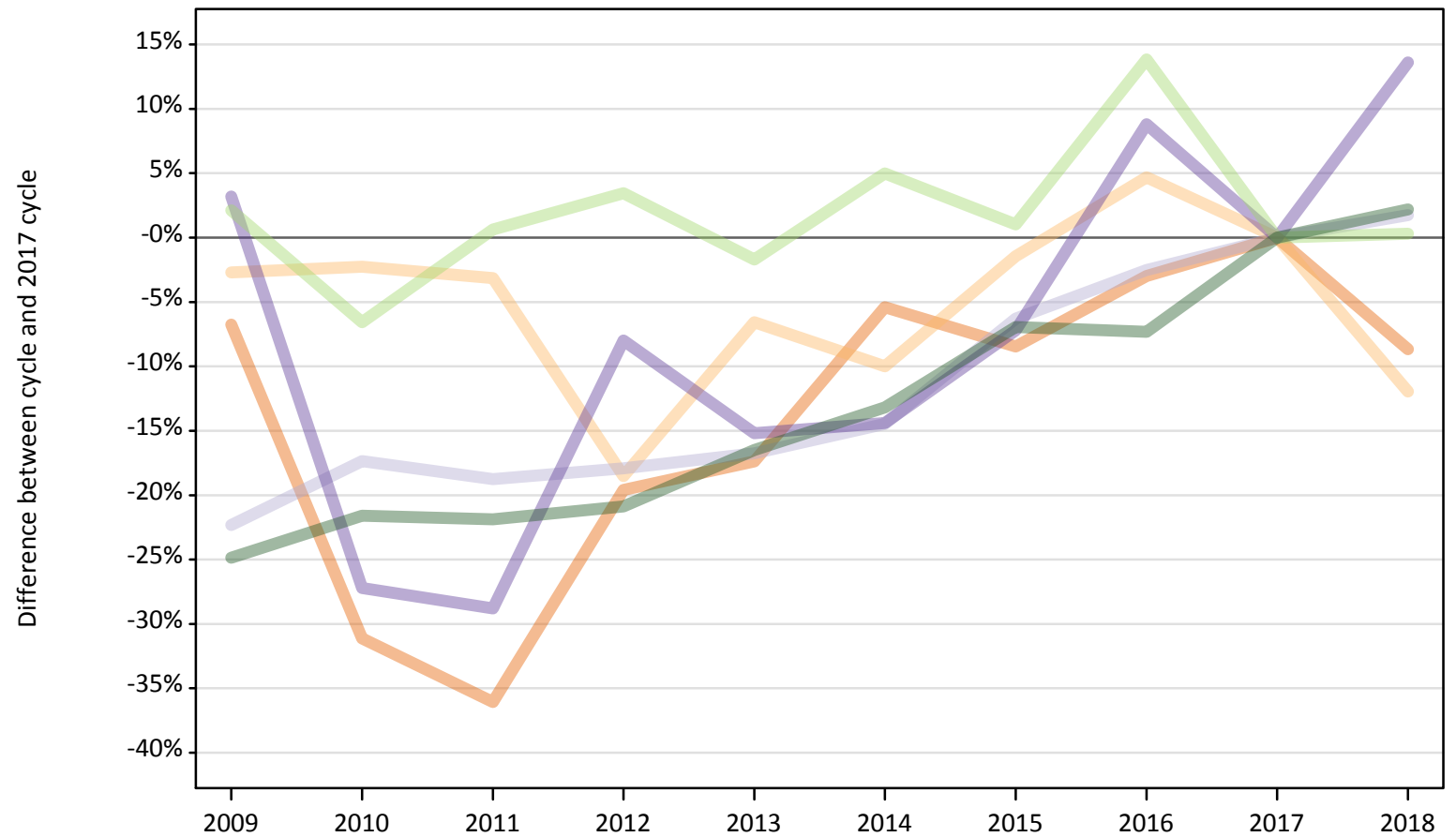
Domicile of applicant	2009	2010	2011	2012	2013	2014	2015	2016	2017	2018
England	-19%	-35%	-28%	-24%	-21%	32%	69%	-6%	0%	-4%
Northern Ireland	2%	-2%	-6%	-4%	7%	7%	-3%	3%	0%	-1%
Scotland	-47%	-28%	-41%	-19%	-56%	-47%	-38%	-41%	0%	-16%
Wales	-14%	-50%	-43%		-64%	-43%	-7%	-21%	0%	-29%
EU (excluding UK)	34%	64%	15%	13%	19%	25%	10%	-4%	0%	5%
Not EU	-70%	-69%	-46%	-22%	-15%	-6%	-23%	6%	0%	26%

Note: The percentage change is not recorded in the above table for groups with fewer than 10 placed applicants in that cycle or in the 2017 cycle.

B.10 Placed applicants at 14 days after A level results day: providers in Scotland

Selected applicant domiciles: difference between cycle and 2017 cycle (at 14 days after A level results day)

- England
- Northern Ireland
- Scotland
- Wales
- EU (excluding UK)
- Not EU



Note: The percentage change is not plotted in the above chart for groups with fewer than 30 placed applicants in any one cycle.

B.11 Placed applicants at 14 days after A level results day: providers in Scotland

Placed applicants by domicile (at 14 days after A level results day)

Domicile of applicant	2009	2010	2011	2012	2013	2014	2015	2016	2017	2018
England	4,690	3,460	3,210	4,040	4,150	4,750	4,600	4,870	5,020	4,590
Northern Ireland	1,080	1,090	1,080	910	1,040	1,000	1,100	1,160	1,110	980
Scotland	25,260	26,870	26,420	26,690	27,070	27,810	30,470	31,700	32,520	33,080
Wales	130	90	90	120	110	110	120	140	130	140
EU (excluding UK)	4,120	3,770	4,060	4,180	3,970	4,240	4,080	4,600	4,040	4,050
Not EU	2,170	2,260	2,250	2,280	2,410	2,500	2,680	2,670	2,880	2,950

B.12 Placed applicants at 14 days after A level results day: providers in Scotland

Selected applicant domiciles: difference between cycle and 2017 cycle (at 14 days after A level results day)

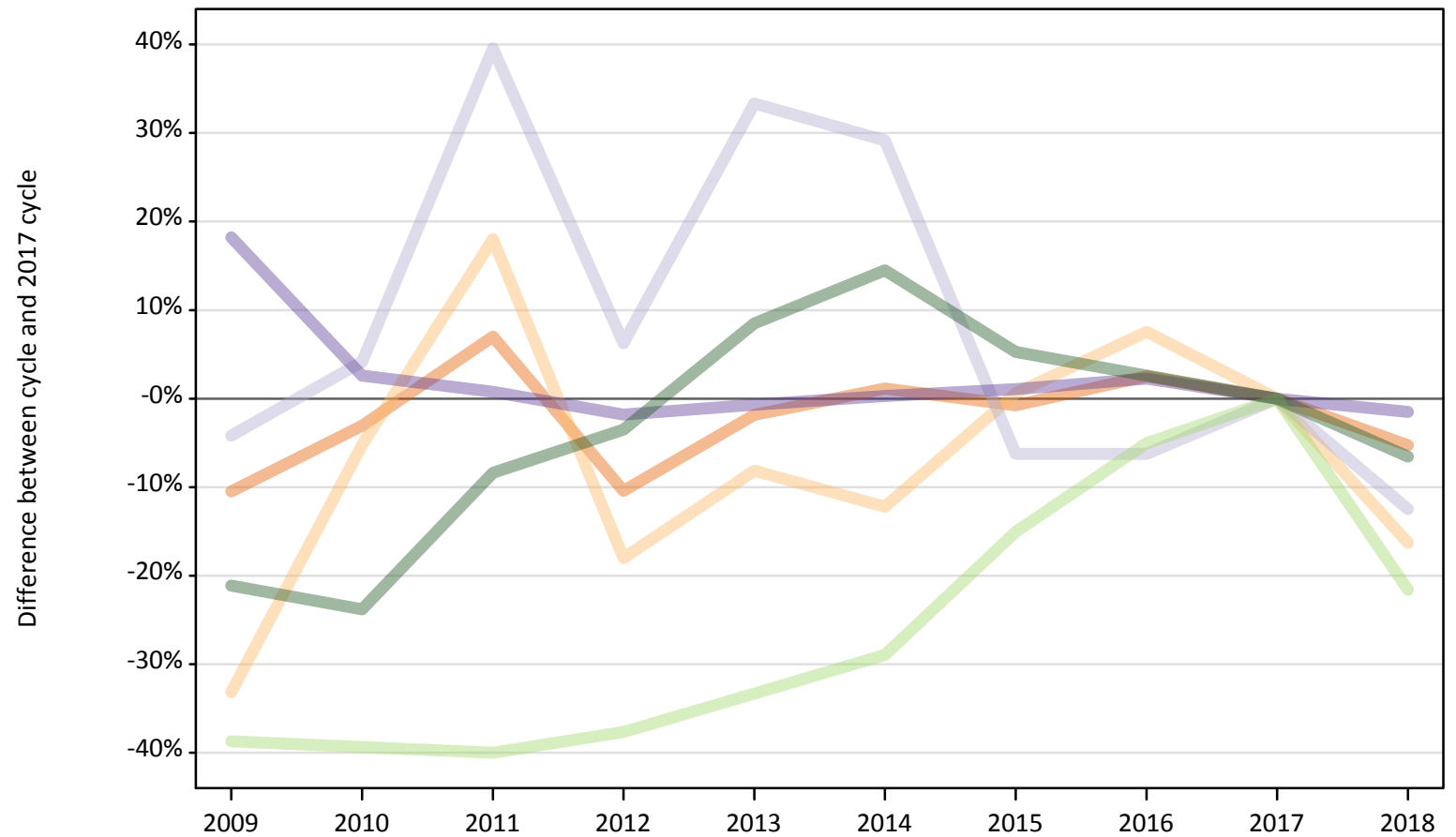
Domicile of applicant	2009	2010	2011	2012	2013	2014	2015	2016	2017	2018
England	-7%	-31%	-36%	-20%	-17%	-5%	-8%	-3%	0%	-9%
Northern Ireland	-3%	-2%	-3%	-19%	-7%	-10%	-1%	5%	0%	-12%
Scotland	-22%	-17%	-19%	-18%	-17%	-14%	-6%	-3%	0%	2%
Wales	3%	-27%	-29%	-8%	-15%	-14%	-7%	9%	0%	14%
EU (excluding UK)	2%	-7%	1%	3%	-2%	5%	1%	14%	0%	0%
Not EU	-25%	-22%	-22%	-21%	-17%	-13%	-7%	-7%	0%	2%

Note: The percentage change is not recorded in the above table for groups with fewer than 10 placed applicants in that cycle or in the 2017 cycle.

B.13 Placed applicants at 14 days after A level results day: providers in Wales

Selected applicant domiciles: difference between cycle and 2017 cycle (at 14 days after A level results day)

- England
- Northern Ireland
- Scotland
- Wales
- EU (excluding UK)
- Not EU



Note: The percentage change is not plotted in the above chart for groups with fewer than 30 placed applicants in any one cycle.

B.14 Placed applicants at 14 days after A level results day: providers in Wales

Placed applicants by domicile (at 14 days after A level results day)

Domicile of applicant	2009	2010	2011	2012	2013	2014	2015	2016	2017	2018
England	9,320	10,090	11,140	9,320	10,220	10,530	10,330	10,670	10,410	9,860
Northern Ireland	120	160	200	140	160	150	170	190	170	140
Scotland	50	50	70	50	60	60	50	50	50	40
Wales	12,620	10,960	10,760	10,490	10,610	10,710	10,790	10,920	10,680	10,520
EU (excluding UK)	870	860	850	880	940	1,000	1,200	1,340	1,410	1,110
Not EU	860	830	990	1,050	1,180	1,240	1,140	1,110	1,080	1,010

B.15 Placed applicants at 14 days after A level results day: providers in Wales

Selected applicant domiciles: difference between cycle and 2017 cycle (at 14 days after A level results day)

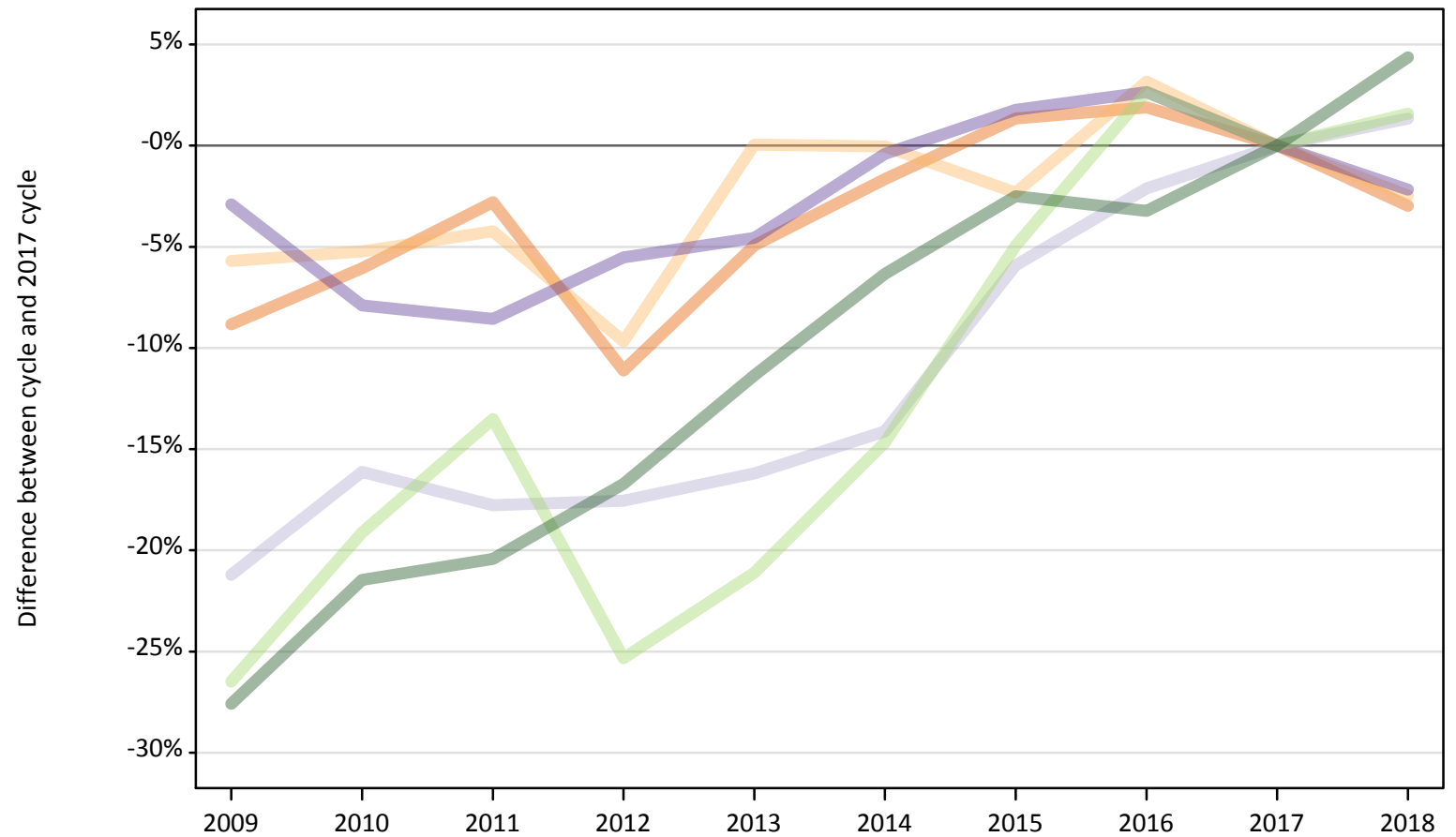
Domicile of applicant	2009	2010	2011	2012	2013	2014	2015	2016	2017	2018
England	-10%	-3%	7%	-10%	-2%	1%	-1%	3%	0%	-5%
Northern Ireland	-33%	-5%	18%	-18%	-8%	-12%	1%	8%	0%	-16%
Scotland	-4%	4%	40%	6%	33%	29%	-6%	-6%	0%	-13%
Wales	18%	3%	1%	-2%	-1%	0%	1%	2%	0%	-1%
EU (excluding UK)	-39%	-39%	-40%	-38%	-33%	-29%	-15%	-5%	0%	-22%
Not EU	-21%	-24%	-8%	-4%	8%	14%	5%	3%	0%	-7%

Note: The percentage change is not recorded in the above table for groups with fewer than 10 placed applicants in that cycle or in the 2017 cycle.

B.16 Placed applicants at 14 days after A level results day: providers in the UK

Selected applicant domiciles: difference between cycle and 2017 cycle (at 14 days after A level results day)

- England
- Northern Ireland
- Scotland
- Wales
- EU (excluding UK)
- Not EU



Note: The percentage change is not plotted in the above chart for groups with fewer than 30 placed applicants in any one cycle.

B.17 Placed applicants at 14 days after A level results day: providers in the UK

Placed applicants by domicile (at 14 days after A level results day)

Domicile of applicant	2009	2010	2011	2012	2013	2014	2015	2016	2017	2018
England	328,200	338,140	349,890	319,990	342,220	354,040	364,780	366,780	359,970	349,260
Northern Ireland	13,390	13,460	13,600	12,830	14,210	14,200	13,870	14,650	14,200	13,850
Scotland	26,920	28,660	28,100	28,170	28,640	29,340	32,150	33,450	34,170	34,620
Wales	18,280	17,340	17,220	17,790	17,970	18,750	19,160	19,320	18,830	18,420
EU (excluding UK)	21,350	23,490	25,120	21,690	22,920	24,780	27,610	29,820	29,040	29,500
Not EU	25,630	27,800	28,160	29,480	31,380	33,150	34,510	34,250	35,390	36,940

B.18 Placed applicants at 14 days after A level results day: providers in the UK

Selected applicant domiciles: difference between cycle and 2017 cycle (at 14 days after A level results day)

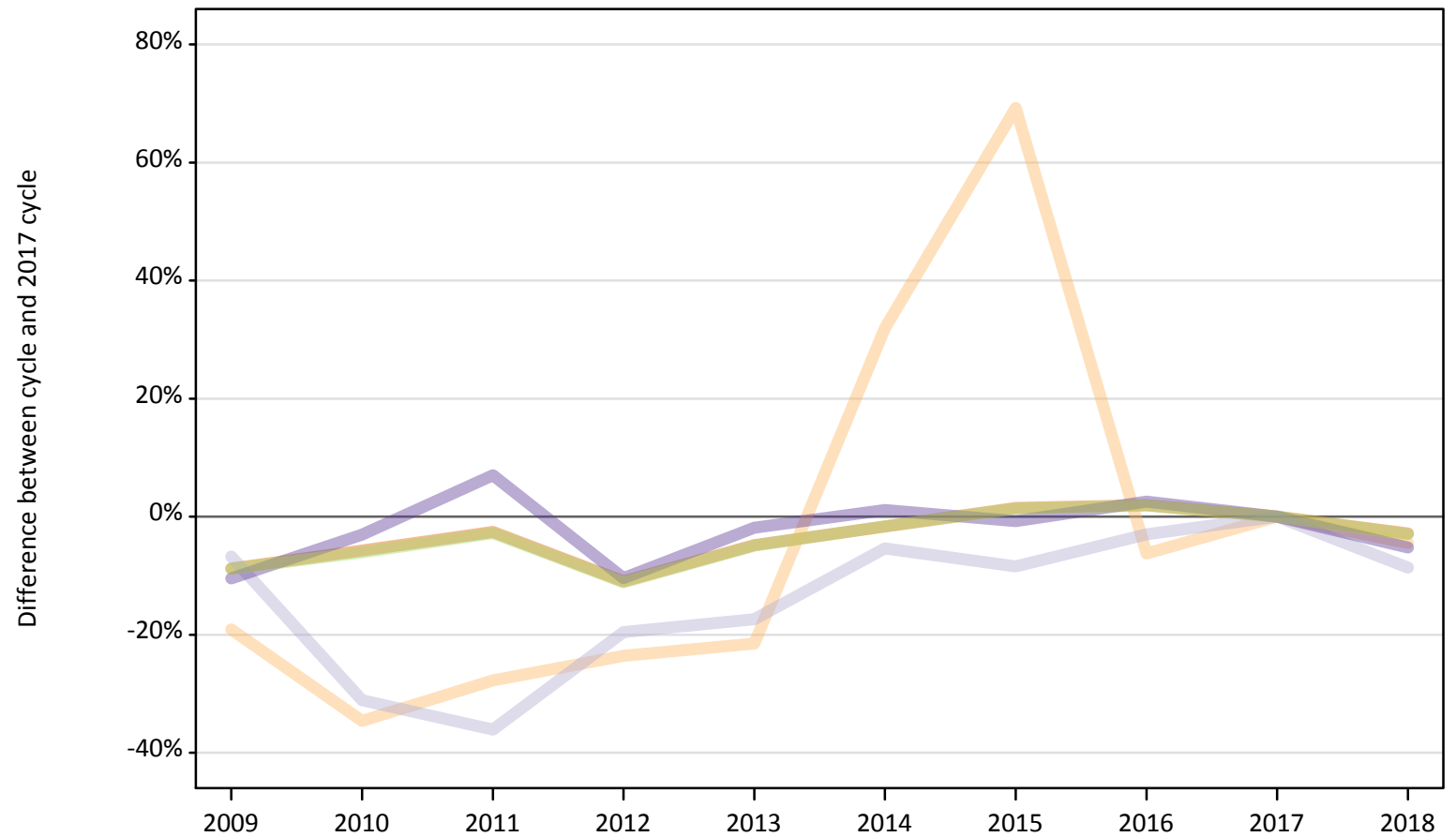
Domicile of applicant	2009	2010	2011	2012	2013	2014	2015	2016	2017	2018
England	-9%	-6%	-3%	-11%	-5%	-2%	1%	2%	0%	-3%
Northern Ireland	-6%	-5%	-4%	-10%	0%	-0%	-2%	3%	0%	-2%
Scotland	-21%	-16%	-18%	-18%	-16%	-14%	-6%	-2%	0%	1%
Wales	-3%	-8%	-9%	-6%	-5%	-0%	2%	3%	0%	-2%
EU (excluding UK)	-26%	-19%	-14%	-25%	-21%	-15%	-5%	3%	0%	2%
Not EU	-28%	-21%	-20%	-17%	-11%	-6%	-3%	-3%	0%	4%

Note: The percentage change is not recorded in the above table for groups with fewer than 10 placed applicants in that cycle or in the 2017 cycle.

B.19 Placed applicants at 14 days after A level results day: domiciled in England

Selected provider countries: difference between cycle and 2017 cycle (at 14 days after A level results day)

- England
- Northern Ireland
- Scotland
- Wales
- UK



Note: The percentage change is not plotted in the above chart for groups with fewer than 30 placed applicants in any one cycle.

B.20 Placed applicants at 14 days after A level results day: domiciled in England

Placed applicants by provider country (at 14 days after A level results day)

Country of provider	2009	2010	2011	2012	2013	2014	2015	2016	2017	2018
England	313,930	324,370	335,300	306,370	327,600	338,320	349,290	350,920	344,200	334,490
Northern Ireland	270	220	240	260	260	440	570	310	340	320
Scotland	4,690	3,460	3,210	4,040	4,150	4,750	4,600	4,870	5,020	4,590
Wales	9,320	10,090	11,140	9,320	10,220	10,530	10,330	10,670	10,410	9,860
UK	328,200	338,140	349,890	319,990	342,220	354,040	364,780	366,780	359,970	349,260

B.21 Placed applicants at 14 days after A level results day: domiciled in England

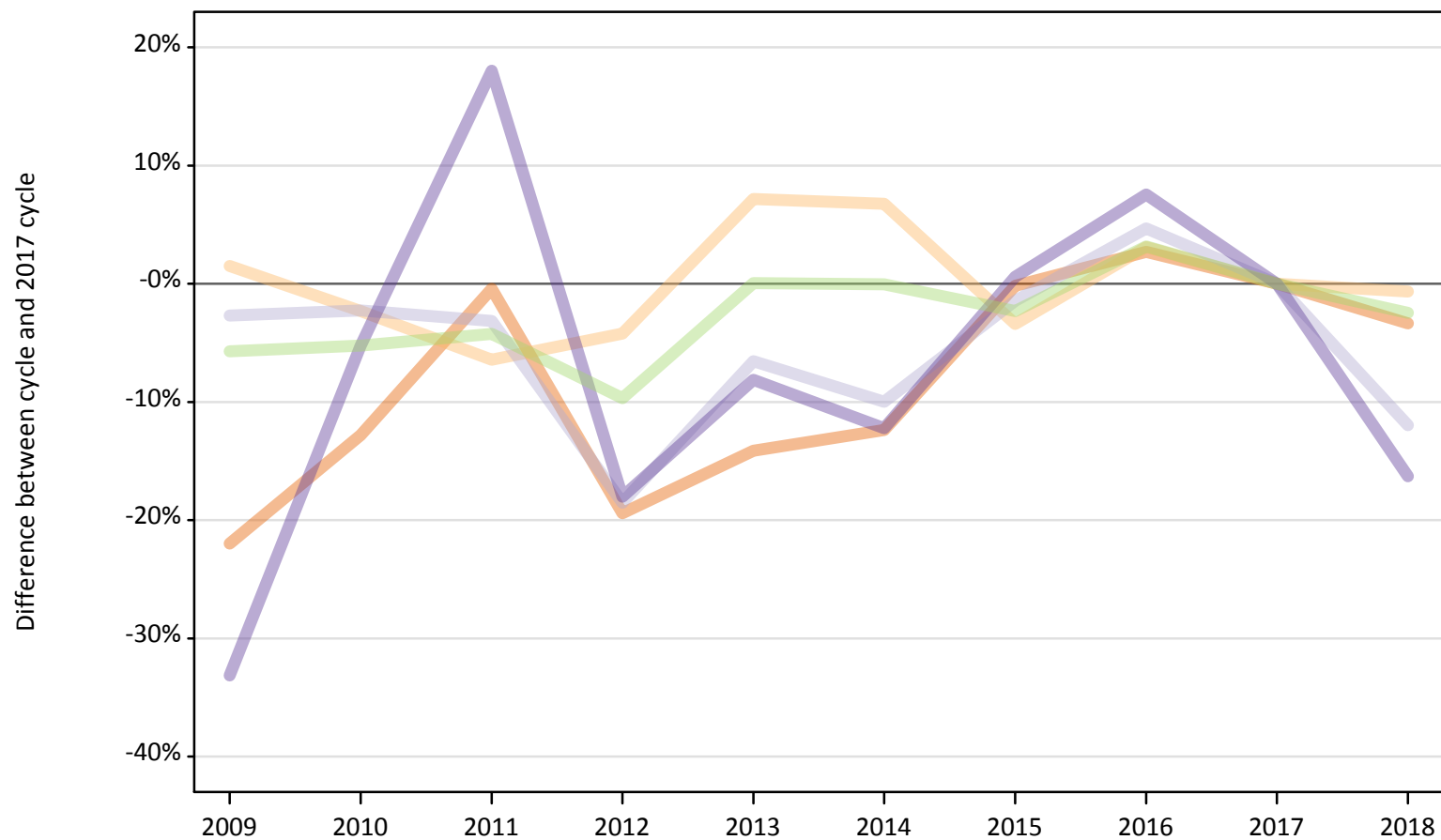
Selected provider countries: difference between cycle and 2017 cycle (at 14 days after A level results day)

Country of provider	2009	2010	2011	2012	2013	2014	2015	2016	2017	2018
England	-9%	-6%	-3%	-11%	-5%	-2%	1%	2%	0%	-3%
Northern Ireland	-19%	-35%	-28%	-24%	-21%	32%	69%	-6%	0%	-4%
Scotland	-7%	-31%	-36%	-20%	-17%	-5%	-8%	-3%	0%	-9%
Wales	-10%	-3%	7%	-10%	-2%	1%	-1%	3%	0%	-5%
UK	-9%	-6%	-3%	-11%	-5%	-2%	1%	2%	0%	-3%

Note: The percentage change is not recorded in the above table for groups with fewer than 10 placed applicants in that cycle or in the 2017 cycle.

B.22 Placed applicants at 14 days after A level results day: domiciled in Northern Ireland
Selected provider countries: difference between cycle and 2017 cycle (at 14 days after A level results day)

- England
- Northern Ireland
- Scotland
- Wales
- UK



Note: The percentage change is not plotted in the above chart for groups with fewer than 30 placed applicants in any one cycle.

B.23 Placed applicants at 14 days after A level results day: domiciled in Northern Ireland

Placed applicants by provider country (at 14 days after A level results day)

Country of provider	2009	2010	2011	2012	2013	2014	2015	2016	2017	2018
England	3,050	3,410	3,890	3,150	3,350	3,420	3,900	4,010	3,910	3,780
Northern Ireland	9,150	8,800	8,430	8,630	9,660	9,620	8,710	9,290	9,010	8,950
Scotland	1,080	1,090	1,080	910	1,040	1,000	1,100	1,160	1,110	980
Wales	120	160	200	140	160	150	170	190	170	140
UK	13,390	13,460	13,600	12,830	14,210	14,200	13,870	14,650	14,200	13,850

B.24 Placed applicants at 14 days after A level results day: domiciled in Northern Ireland

Selected provider countries: difference between cycle and 2017 cycle (at 14 days after A level results day)

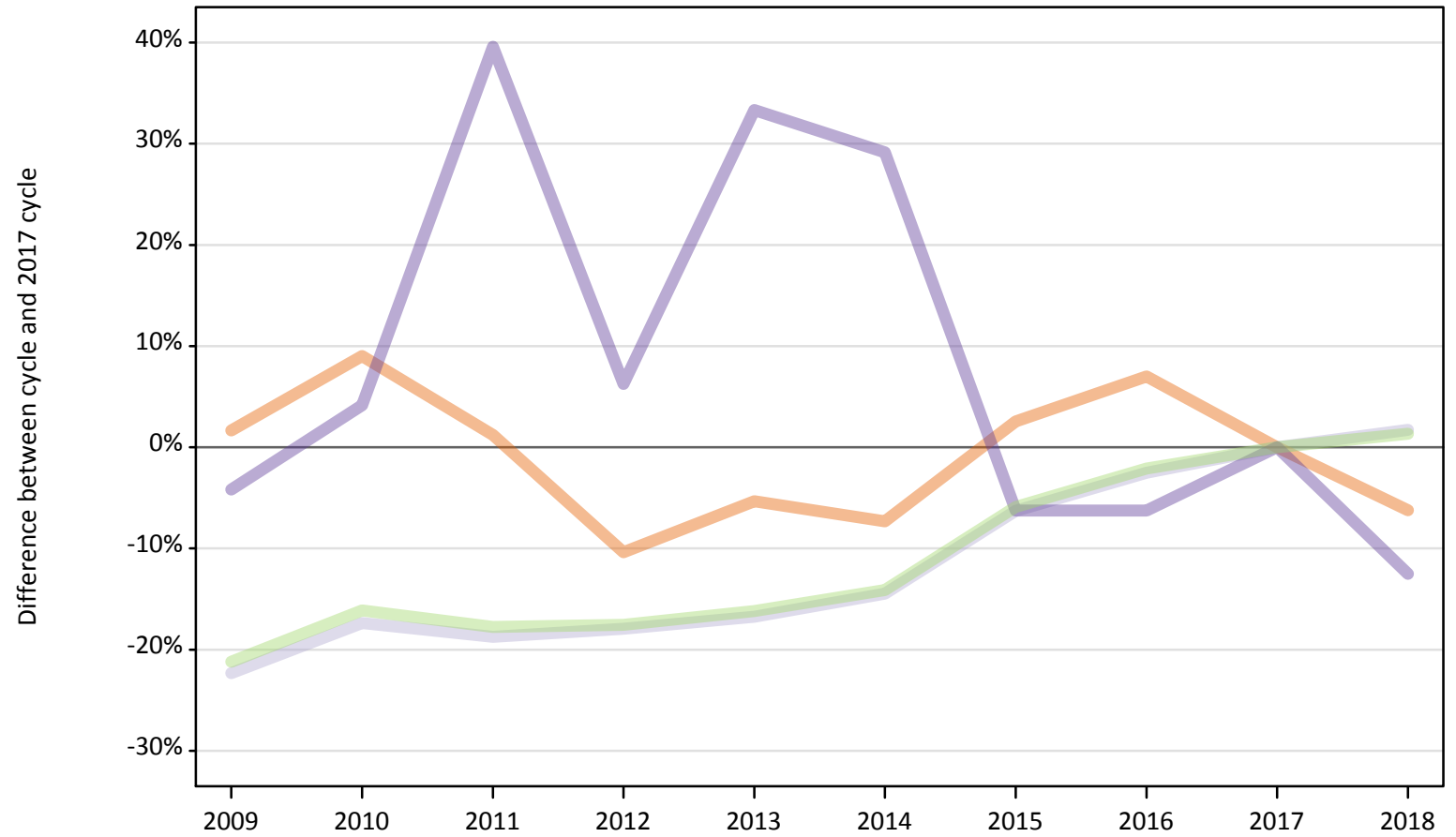
Country of provider	2009	2010	2011	2012	2013	2014	2015	2016	2017	2018
England	-22%	-13%	-0%	-19%	-14%	-12%	-0%	3%	0%	-3%
Northern Ireland	2%	-2%	-6%	-4%	7%	7%	-3%	3%	0%	-1%
Scotland	-3%	-2%	-3%	-19%	-7%	-10%	-1%	5%	0%	-12%
Wales	-33%	-5%	18%	-18%	-8%	-12%	1%	8%	0%	-16%
UK	-6%	-5%	-4%	-10%	0%	-0%	-2%	3%	0%	-2%

Note: The percentage change is not recorded in the above table for groups with fewer than 10 placed applicants in that cycle or in the 2017 cycle.

B.25 Placed applicants at 14 days after A level results day: domiciled in Scotland

Selected provider countries: difference between cycle and 2017 cycle (at 14 days after A level results day)

- England
- Northern Ireland
- Scotland
- Wales
- UK



Note: The percentage change is not plotted in the above chart for groups with fewer than 30 placed applicants in any one cycle.

B.26 Placed applicants at 14 days after A level results day: domiciled in Scotland

Placed applicants by provider country (at 14 days after A level results day)

Country of provider	2009	2010	2011	2012	2013	2014	2015	2016	2017	2018
England	1,600	1,710	1,590	1,410	1,490	1,460	1,610	1,680	1,570	1,470
Northern Ireland	20	20	20	30	10	20	20	20	30	30
Scotland	25,260	26,870	26,420	26,690	27,070	27,810	30,470	31,700	32,520	33,080
Wales	50	50	70	50	60	60	50	50	50	40
UK	26,920	28,660	28,100	28,170	28,640	29,340	32,150	33,450	34,170	34,620

B.27 Placed applicants at 14 days after A level results day: domiciled in Scotland

Selected provider countries: difference between cycle and 2017 cycle (at 14 days after A level results day)

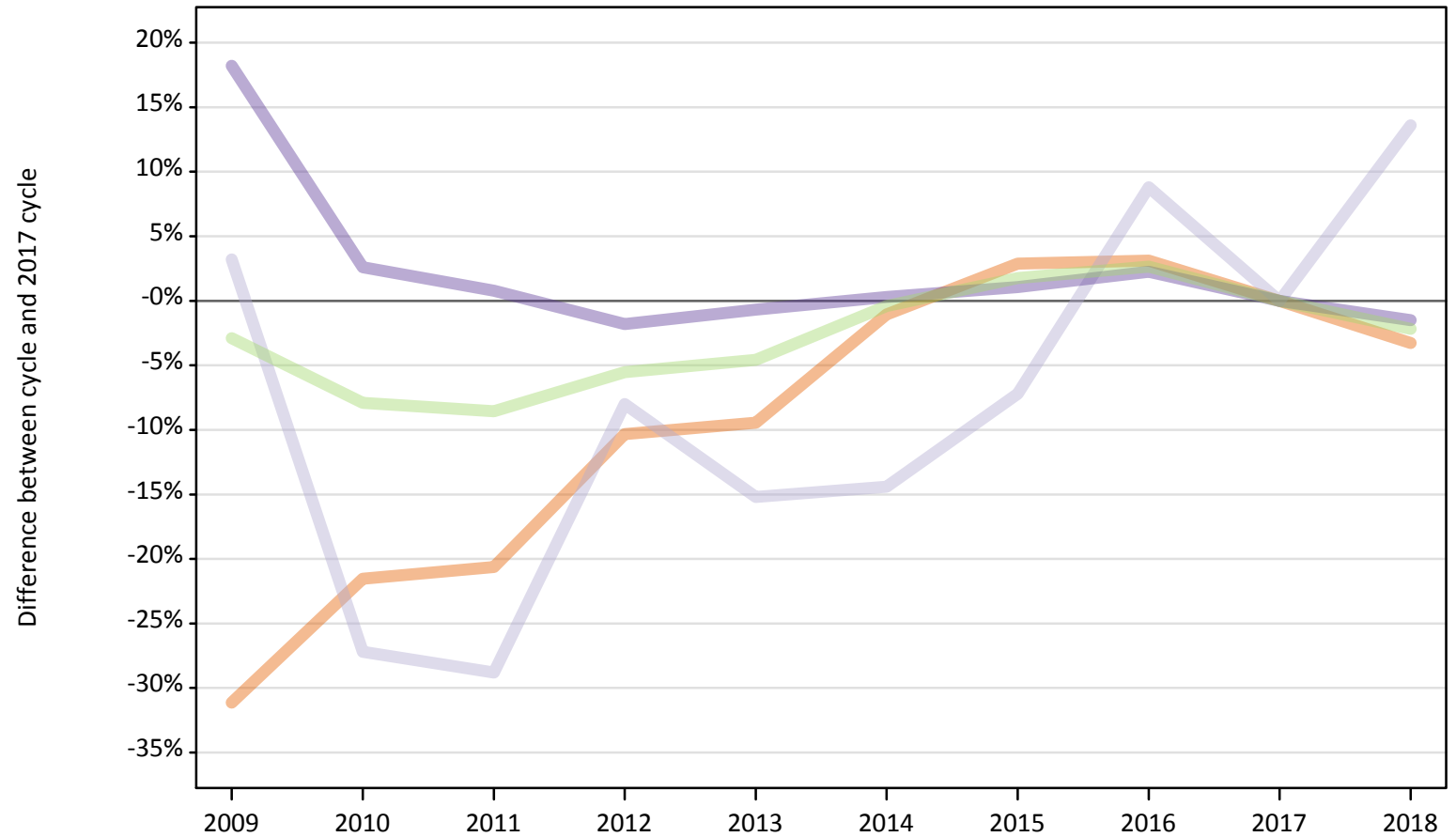
Country of provider	2009	2010	2011	2012	2013	2014	2015	2016	2017	2018
England	2%	9%	1%	-10%	-5%	-7%	3%	7%	0%	-6%
Northern Ireland	-47%	-28%	-41%	-19%	-56%	-47%	-38%	-41%	0%	-16%
Scotland	-22%	-17%	-19%	-18%	-17%	-14%	-6%	-3%	0%	2%
Wales	-4%	4%	40%	6%	33%	29%	-6%	-6%	0%	-13%
UK	-21%	-16%	-18%	-18%	-16%	-14%	-6%	-2%	0%	1%

Note: The percentage change is not recorded in the above table for groups with fewer than 10 placed applicants in that cycle or in the 2017 cycle.

B.28 Placed applicants at 14 days after A level results day: domiciled in Wales

Selected provider countries: difference between cycle and 2017 cycle (at 14 days after A level results day)

- England
- Northern Ireland
- Scotland
- Wales
- UK



Note: The percentage change is not plotted in the above chart for groups with fewer than 30 placed applicants in any one cycle.

B.29 Placed applicants at 14 days after A level results day: domiciled in Wales

Placed applicants by provider country (at 14 days after A level results day)

Country of provider	2009	2010	2011	2012	2013	2014	2015	2016	2017	2018
England	5,520	6,280	6,360	7,180	7,250	7,920	8,240	8,260	8,010	7,750
Northern Ireland	10	10	10	0	10	10	10	10	10	10
Scotland	130	90	90	120	110	110	120	140	130	140
Wales	12,620	10,960	10,760	10,490	10,610	10,710	10,790	10,920	10,680	10,520
UK	18,280	17,340	17,220	17,790	17,970	18,750	19,160	19,320	18,830	18,420

B.30 Placed applicants at 14 days after A level results day: domiciled in Wales

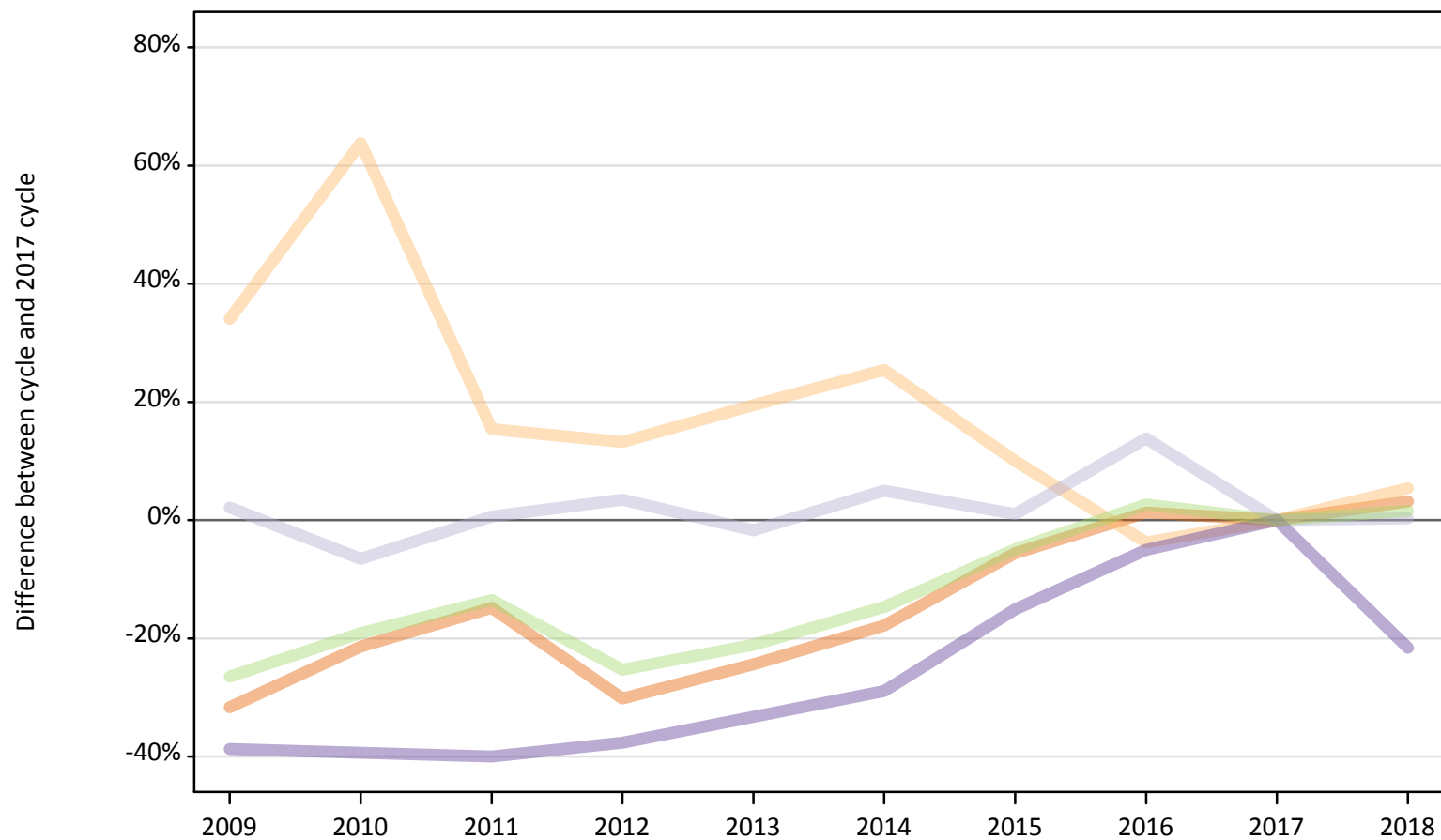
Selected provider countries: difference between cycle and 2017 cycle (at 14 days after A level results day)

Country of provider	2009	2010	2011	2012	2013	2014	2015	2016	2017	2018
England	-31%	-22%	-21%	-10%	-9%	-1%	3%	3%	0%	-3%
Northern Ireland	-14%	-50%	-43%		-64%	-43%	-7%	-21%	0%	-29%
Scotland	3%	-27%	-29%	-8%	-15%	-14%	-7%	9%	0%	14%
Wales	18%	3%	1%	-2%	-1%	0%	1%	2%	0%	-1%
UK	-3%	-8%	-9%	-6%	-5%	-0%	2%	3%	0%	-2%

Note: The percentage change is not recorded in the above table for groups with fewer than 10 placed applicants in that cycle or in the 2017 cycle.

B.31 Placed applicants at 14 days after A level results day: domiciled in EU (excluding UK)
Selected provider countries: difference between cycle and 2017 cycle (at 14 days after A level results day)

- England
- Northern Ireland
- Scotland
- Wales
- UK



Note: The percentage change is not plotted in the above chart for groups with fewer than 30 placed applicants in any one cycle.

B.32 Placed applicants at 14 days after A level results day: domiciled in EU (excluding UK)

Placed applicants by provider country (at 14 days after A level results day)

Country of provider	2009	2010	2011	2012	2013	2014	2015	2016	2017	2018
England	15,870	18,260	19,780	16,210	17,560	19,080	21,920	23,520	23,220	23,950
Northern Ireland	500	610	430	420	440	460	410	360	370	390
Scotland	4,120	3,770	4,060	4,180	3,970	4,240	4,080	4,600	4,040	4,050
Wales	870	860	850	880	940	1,000	1,200	1,340	1,410	1,110
UK	21,350	23,490	25,120	21,690	22,920	24,780	27,610	29,820	29,040	29,500

B.33 Placed applicants at 14 days after A level results day: domiciled in EU (excluding UK)

Selected provider countries: difference between cycle and 2017 cycle (at 14 days after A level results day)

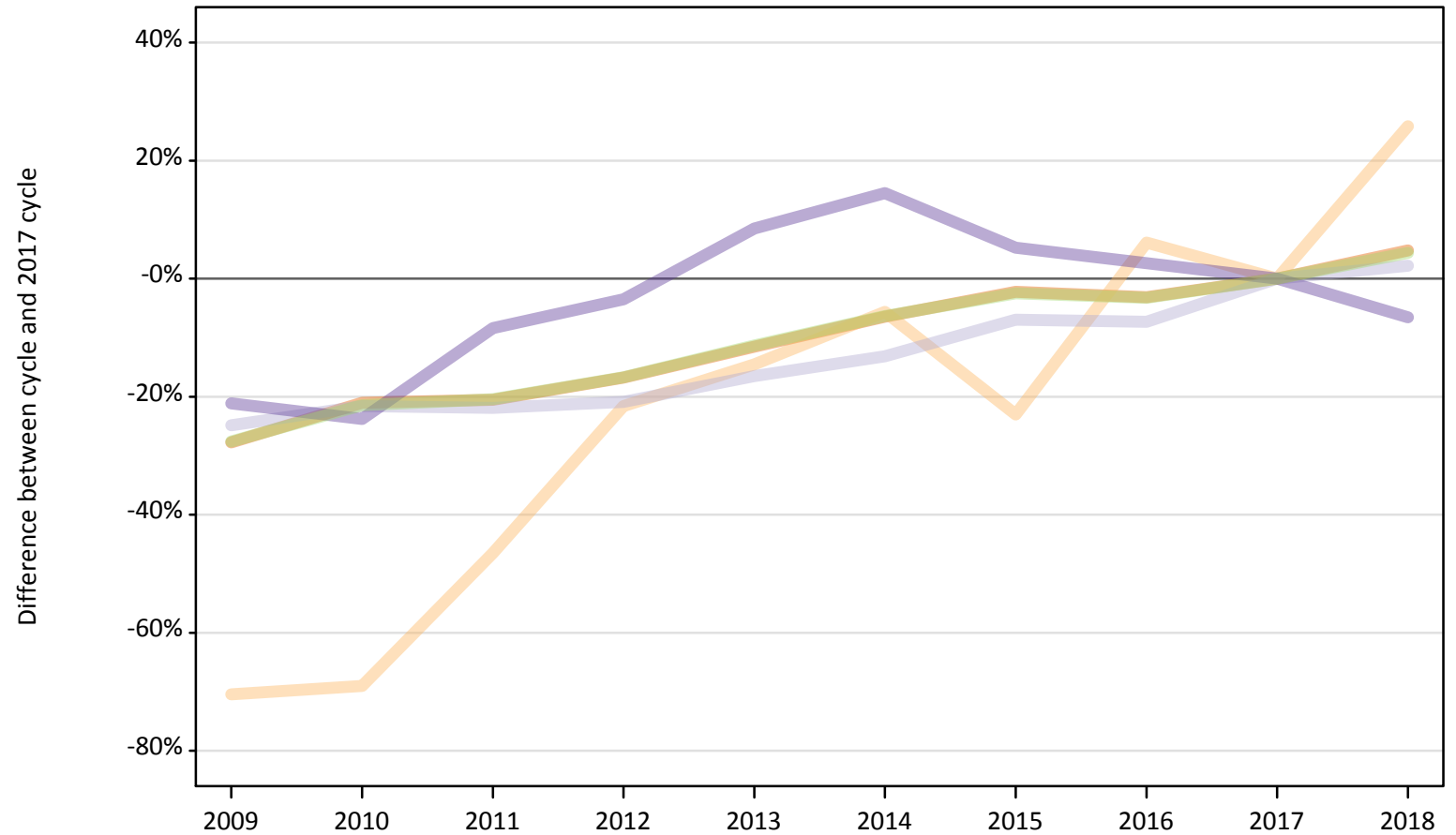
Country of provider	2009	2010	2011	2012	2013	2014	2015	2016	2017	2018
England	-32%	-21%	-15%	-30%	-24%	-18%	-6%	1%	0%	3%
Northern Ireland	34%	64%	15%	13%	19%	25%	10%	-4%	0%	5%
Scotland	2%	-7%	1%	3%	-2%	5%	1%	14%	0%	0%
Wales	-39%	-39%	-40%	-38%	-33%	-29%	-15%	-5%	0%	-22%
UK	-26%	-19%	-14%	-25%	-21%	-15%	-5%	3%	0%	2%

Note: The percentage change is not recorded in the above table for groups with fewer than 10 placed applicants in that cycle or in the 2017 cycle.

B.34 Placed applicants at 14 days after A level results day: domiciled in Not EU

Selected provider countries: difference between cycle and 2017 cycle (at 14 days after A level results day)

- England
- Northern Ireland
- Scotland
- Wales
- UK



Note: The percentage change is not plotted in the above chart for groups with fewer than 30 placed applicants in any one cycle.

B.35 Placed applicants at 14 days after A level results day: domiciled in Not EU

Placed applicants by provider country (at 14 days after A level results day)

Country of provider	2009	2010	2011	2012	2013	2014	2015	2016	2017	2018
England	22,550	24,640	24,800	25,980	27,610	29,200	30,520	30,240	31,210	32,710
Northern Ireland	60	70	110	170	180	200	160	230	210	270
Scotland	2,170	2,260	2,250	2,280	2,410	2,500	2,680	2,670	2,880	2,950
Wales	860	830	990	1,050	1,180	1,240	1,140	1,110	1,080	1,010
UK	25,630	27,800	28,160	29,480	31,380	33,150	34,510	34,250	35,390	36,940

B.36 Placed applicants at 14 days after A level results day: domiciled in Not EU

Selected provider countries: difference between cycle and 2017 cycle (at 14 days after A level results day)

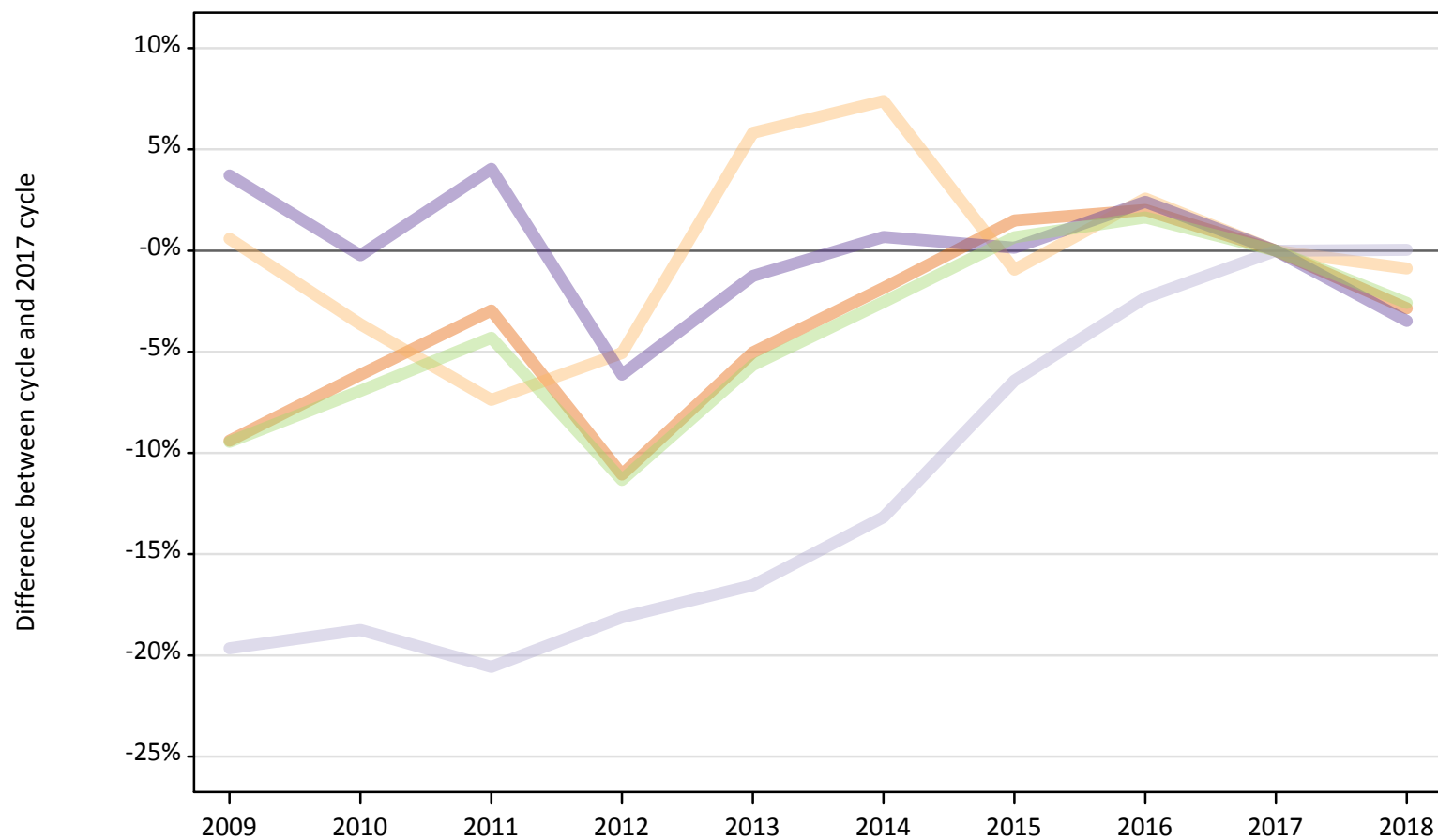
Country of provider	2009	2010	2011	2012	2013	2014	2015	2016	2017	2018
England	-28%	-21%	-21%	-17%	-12%	-6%	-2%	-3%	0%	5%
Northern Ireland	-70%	-69%	-46%	-22%	-15%	-6%	-23%	6%	0%	26%
Scotland	-25%	-22%	-22%	-21%	-17%	-13%	-7%	-7%	0%	2%
Wales	-21%	-24%	-8%	-4%	8%	14%	5%	3%	0%	-7%
UK	-28%	-21%	-20%	-17%	-11%	-6%	-3%	-3%	0%	4%

Note: The percentage change is not recorded in the above table for groups with fewer than 10 placed applicants in that cycle or in the 2017 cycle.

B.37 Placed applicants at 14 days after A level results day: domiciled in UK

Selected provider countries: difference between cycle and 2017 cycle (at 14 days after A level results day)

- England
- Northern Ireland
- Scotland
- Wales
- UK



Note: The percentage change is not plotted in the above chart for groups with fewer than 30 placed applicants in any one cycle.

B.38 Placed applicants at 14 days after A level results day: domiciled in UK

Placed applicants by provider country (at 14 days after A level results day)

Country of provider	2009	2010	2011	2012	2013	2014	2015	2016	2017	2018
England	324,090	335,780	347,130	318,100	339,690	351,120	363,040	364,870	357,690	347,480
Northern Ireland	9,450	9,050	8,700	8,920	9,940	10,090	9,310	9,640	9,390	9,310
Scotland	31,160	31,510	30,800	31,750	32,370	33,670	36,280	37,870	38,780	38,790
Wales	22,100	21,260	22,170	20,000	21,040	21,450	21,340	21,820	21,310	20,570
UK	386,800	397,600	408,800	378,770	403,040	416,330	429,970	434,200	427,160	416,150

B.39 Placed applicants at 14 days after A level results day: domiciled in UK

Selected provider countries: difference between cycle and 2017 cycle (at 14 days after A level results day)

Country of provider	2009	2010	2011	2012	2013	2014	2015	2016	2017	2018
England	-9%	-6%	-3%	-11%	-5%	-2%	1%	2%	0%	-3%
Northern Ireland	1%	-4%	-7%	-5%	6%	7%	-1%	3%	0%	-1%
Scotland	-20%	-19%	-21%	-18%	-17%	-13%	-6%	-2%	0%	0%
Wales	4%	-0%	4%	-6%	-1%	1%	0%	2%	0%	-3%
UK	-9%	-7%	-4%	-11%	-6%	-3%	1%	2%	0%	-3%

Note: The percentage change is not recorded in the above table for groups with fewer than 10 placed applicants in that cycle or in the 2017 cycle.