

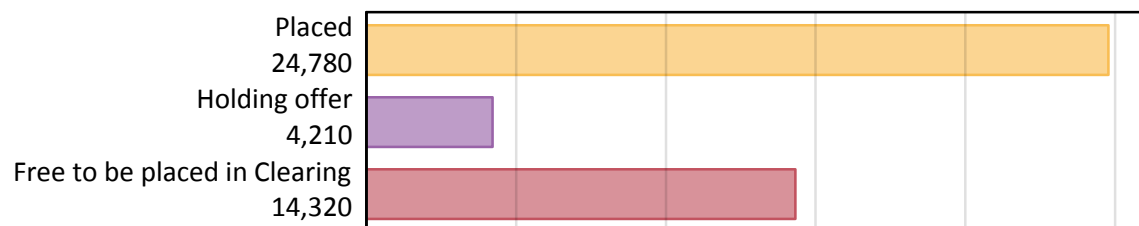
Daily Clearing Analysis: Overview

B7 Nursing analysis at 00:05 on Wednesday 29 August 2018 (13 days after A level results day)

AB.1 Placed applicants to nursing from all domiciles, 2018 cycle

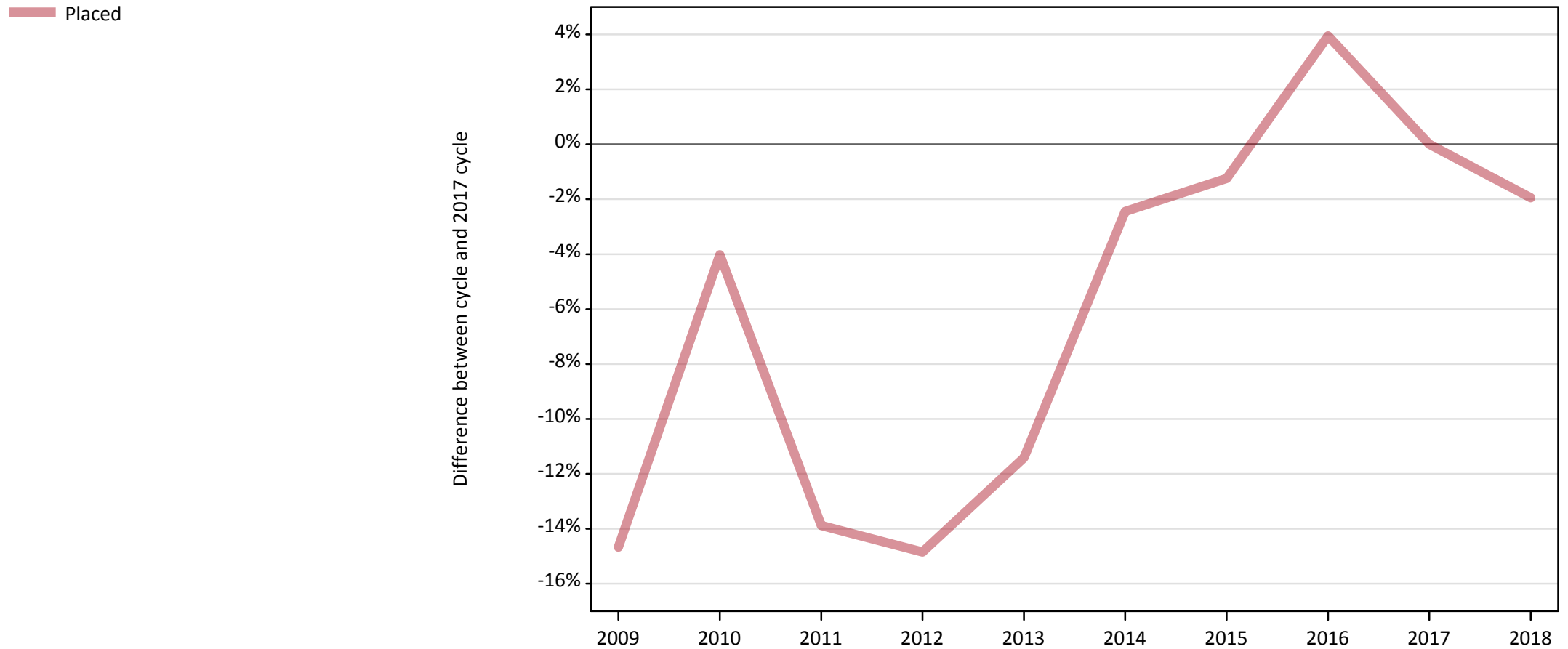
Applicant type	Status	2018
Main scheme	Placed (Clearing)	1,340
	Placed (Adjustment)	10
	Placed (Firm)	21,450
	Placed (Insurance)	500
	Placed (Other)	1,020
	Holding offer	4,210
	Free to be placed in Clearing	14,320
Direct to Clearing	Placed (Direct to Clearing)	470
	Other (Direct to Clearing)	440
All applicants	Placed	24,780

AB.2 Summary of nursing applicants who are placed, holding offers or free to be placed in Clearing (all domiciles)



AB.3 Placed applicants to nursing from all domiciles: 13 days after A level results day

Placed applicants to nursing: difference between cycle and 2017 cycle



Note: The percentage change is not plotted in the above chart for groups with fewer than 30 placed applicants in any one cycle.

AB.4 Placed applicants to nursing from all domiciles: 13 days after A level results day

Placed applicants to nursing: applicants at 13 days after A level results day

Applicant type	Status	2009	2010	2011	2012	2013	2014	2015	2016	2017	2018
All applicants	Placed	21,570	24,260	21,770	21,520	22,390	24,660	24,960	26,270	25,270	24,780

AB.5 Placed applicants to nursing from all domiciles: 13 days after A level results day

Placed applicants to nursing: difference between cycle and 2017 cycle

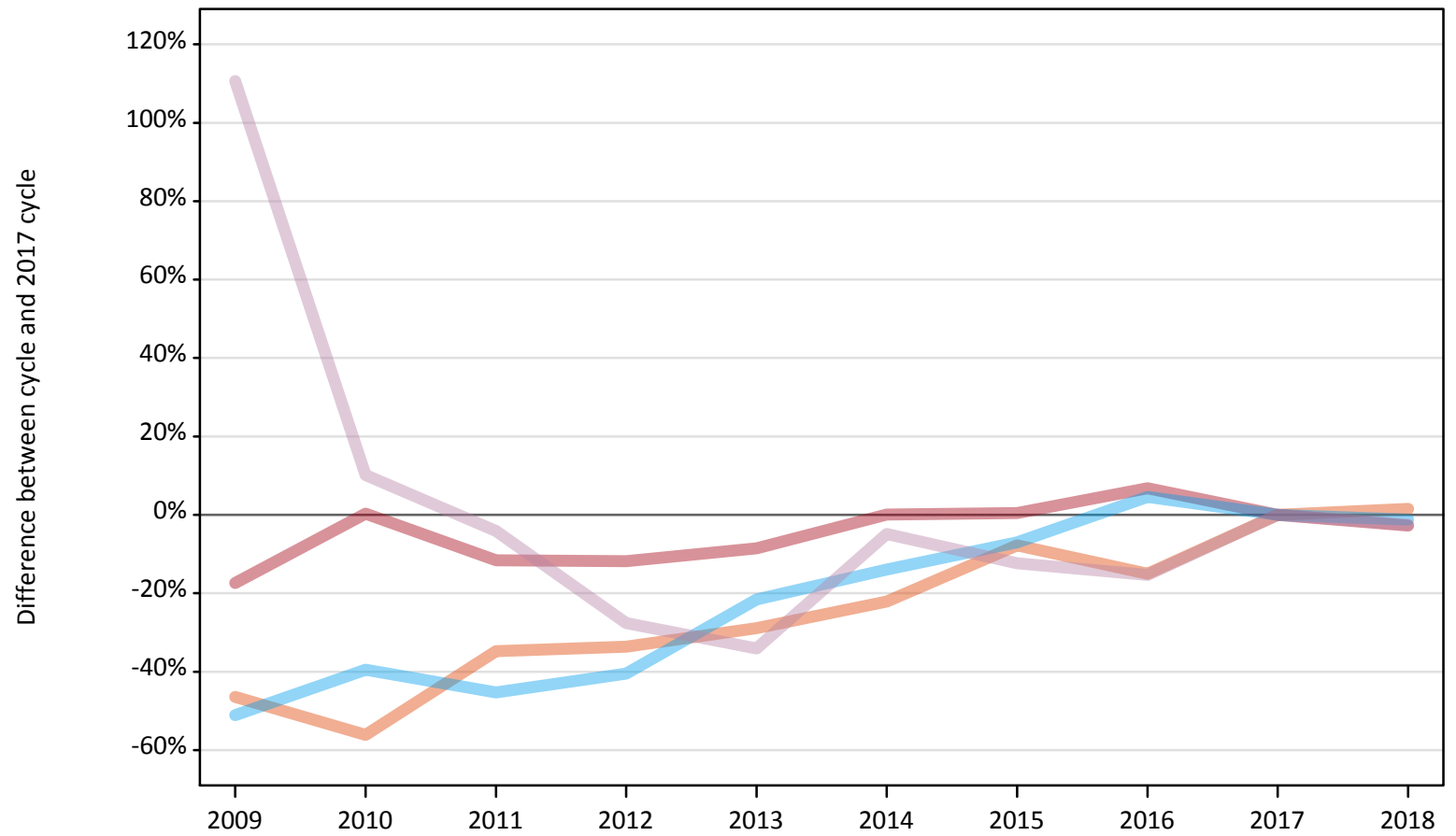
Applicant type	Status	2009	2010	2011	2012	2013	2014	2015	2016	2017	2018
All applicants	Placed	-15%	-4%	-14%	-15%	-11%	-2%	-1%	4%	0%	-2%

Note: The percentage change is not recorded in the above table for groups with fewer than 10 placed applicants in that cycle or in the 2017 cycle.

AB.6 Placed main scheme applicants to nursing from all domiciles: 13 days after A level results day

All Main scheme placed routes (excluding Adjustment): difference between cycle and 2017 cycle

- Placed (Clearing)
- Placed (Firm)
- Placed (Insurance)
- Placed (Other)



Note: The percentage change is not plotted in the above chart for groups with fewer than 30 placed applicants in any one cycle.

AB.7 Placed main scheme applicants to nursing from all domiciles: 13 days after A level results day

All Main scheme placed routes (excluding Adjustment): applicants at 13 days after A level results day

Applicant type	Status	2009	2010	2011	2012	2013	2014	2015	2016	2017	2018
Main scheme	Placed (Clearing)	710	580	860	880	940	1,030	1,220	1,120	1,320	1,340
	Placed (Firm)	18,220	22,120	19,500	19,450	20,190	22,080	22,170	23,560	22,060	21,450
	Placed (Insurance)	250	300	270	300	390	430	470	520	500	500
	Placed (Other)	2,200	1,150	1,000	760	690	990	920	890	1,050	1,020

AB.8 Placed main scheme applicants to nursing from all domiciles: 13 days after A level results day

All Main scheme placed routes (excluding Adjustment): difference between cycle and 2017 cycle

Applicant type	Status	2009	2010	2011	2012	2013	2014	2015	2016	2017	2018
Main scheme	Placed (Clearing)	-46%	-56%	-35%	-34%	-29%	-22%	-8%	-15%	0%	2%
	Placed (Firm)	-17%	0%	-12%	-12%	-8%	0%	0%	7%	0%	-3%
	Placed (Insurance)	-51%	-40%	-45%	-41%	-22%	-14%	-7%	5%	0%	-1%
	Placed (Other)	111%	10%	-4%	-28%	-34%	-5%	-12%	-15%	0%	-2%

Note: The percentage change is not recorded in the above table for groups with fewer than 10 placed applicants in that cycle or in the 2017 cycle.

AB.9 Main scheme applicants placed to nursing through adjustment: 13 days after A level results day

Placed through adjustment: difference between cycle and 2017 cycle

[This chart is not part of this report]

AB.10 Main scheme applicants placed to nursing through adjustment: 13 days after A level results day

Placed through adjustment: applicants at 13 days after A level results day

Applicant type	Status	2009	2010	2011	2012	2013	2014	2015	2016	2017	2018
Main scheme	Placed (Adjustment)	0	0	0	0	10	10	10	0	20	10

AB.11 Main scheme applicants placed to nursing through adjustment: 13 days after A level results day

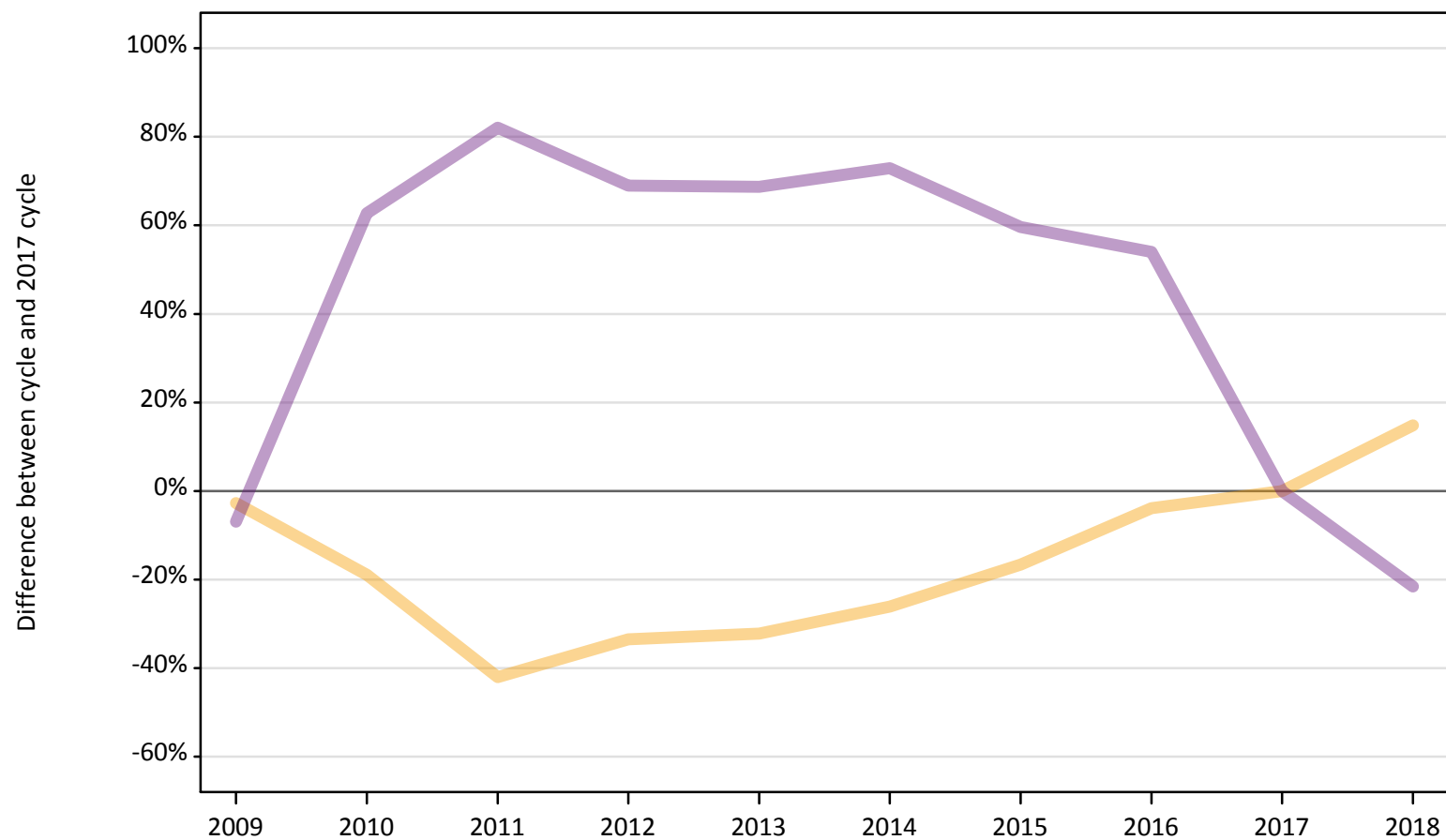
Placed through adjustment: difference between cycle and 2017 cycle

[This table is not part of this report]

AB.12 Main scheme applicants to nursing not currently placed from all domiciles: 13 days after A level results day

Applicants in unplaced states: difference between cycle and 2017 cycle

— Holding offer
— Free to be placed in Clearing



Note: The percentage change is not plotted in the above chart for groups with fewer than 30 unplaced applicants in any one cycle.

AB.13 Main scheme applicants to nursing not currently placed from all domiciles: 13 days after A level results day

Applicants in unplaced states: applicants at 13 days after A level results day

Applicant type	Status	2009	2010	2011	2012	2013	2014	2015	2016	2017	2018
Main scheme	Holding offer	3,570	2,970	2,120	2,440	2,480	2,710	3,060	3,520	3,670	4,210
	Free to be placed in Clearing	16,990	29,720	33,240	30,850	30,800	31,580	29,150	28,110	18,260	14,320

AB.14 Main scheme applicants to nursing not currently placed from all domiciles: 13 days after A level results day

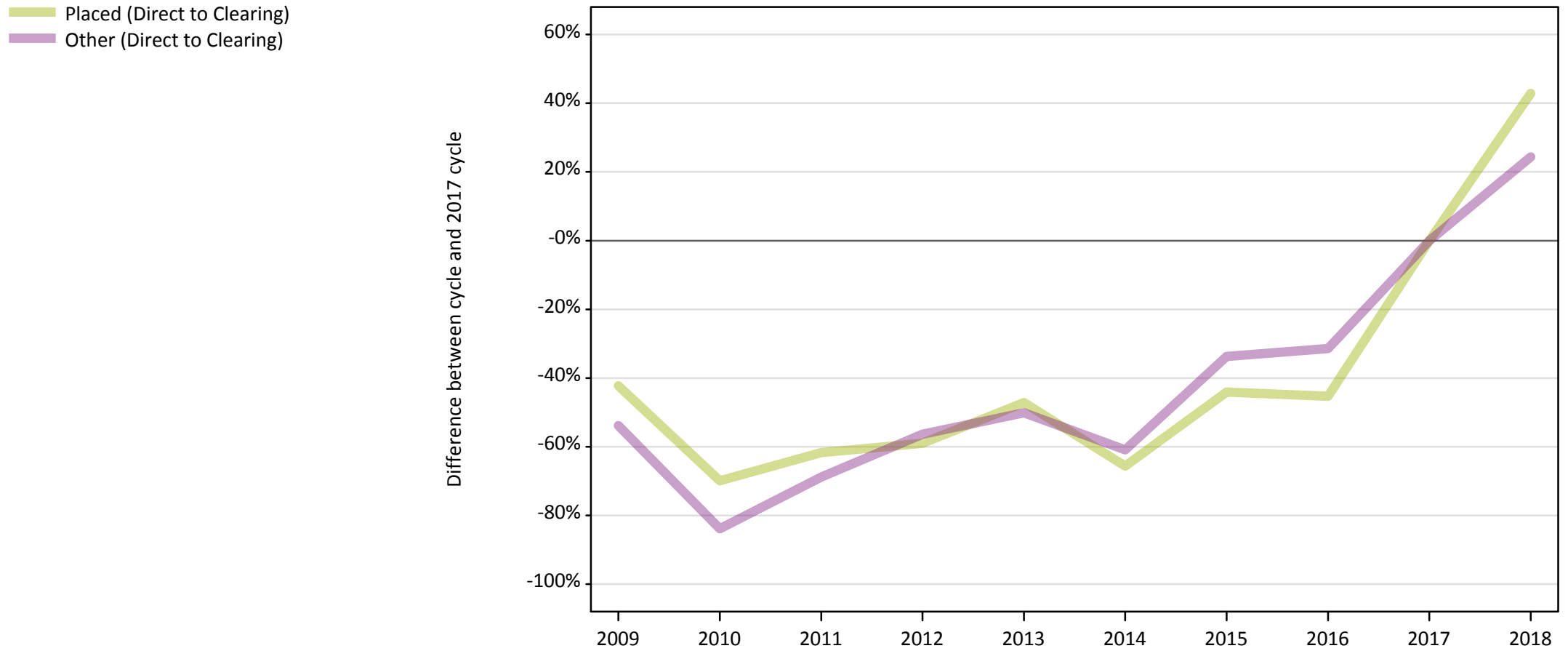
Applicants in unplaced states: difference between cycle and 2017 cycle

Applicant type	Status	2009	2010	2011	2012	2013	2014	2015	2016	2017	2018
Main scheme	Holding offer	-3%	-19%	-42%	-34%	-32%	-26%	-17%	-4%	0%	15%
	Free to be placed in Clearing	-7%	63%	82%	69%	69%	73%	60%	54%	0%	-22%

Note: The percentage change is not recorded in the above table for groups with fewer than 10 unplaced applicants in that cycle or in the 2017 cycle.

AB.15 Direct to Clearing applicants from all domiciles: 13 days after A level results day

Direct to Clearing: difference between cycle and 2017 cycle



Note: The percentage change is not plotted in the above chart for groups with fewer than 30 placed applicants in any one cycle.

AB.16 Direct to Clearing applicants from all domiciles: 13 days after A level results day

Direct to Clearing 13 days after A level results day

Applicant type	Status	2009	2010	2011	2012	2013	2014	2015	2016	2017	2018
Direct to Clearing	Placed (Direct to Clearing)	190	100	130	140	170	110	180	180	330	470
	Other (Direct to Clearing)	160	60	110	150	180	140	230	240	350	440

AB.17 Direct to Clearing applicants from all domiciles: 13 days after A level results day

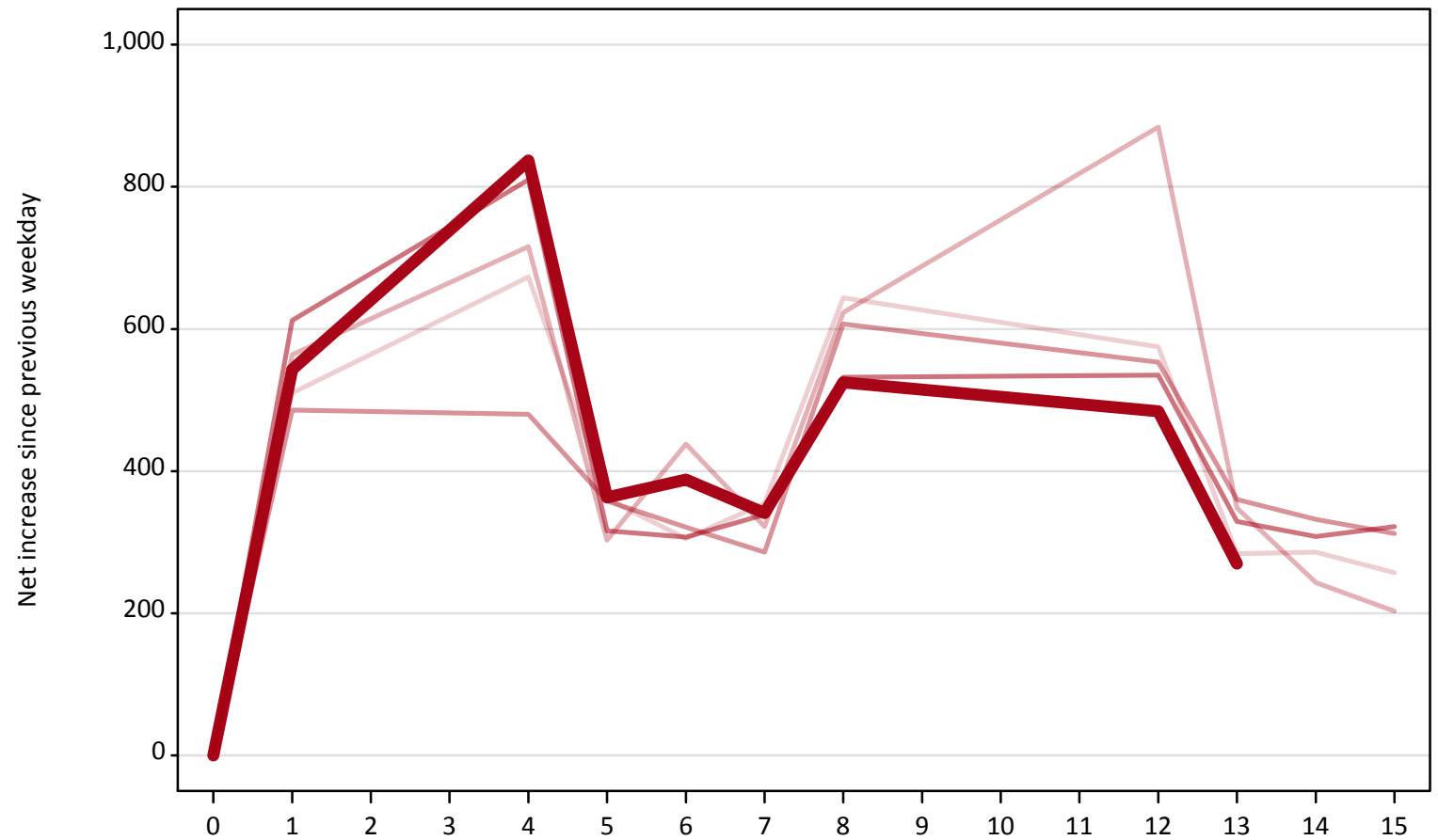
Direct to Clearing: difference between cycle and 2017 cycle

Applicant type	Status	2009	2010	2011	2012	2013	2014	2015	2016	2017	2018
Direct to Clearing	Placed (Direct to Clearing)	-42%	-70%	-62%	-59%	-47%	-66%	-44%	-45%	0%	43%
	Other (Direct to Clearing)	-54%	-84%	-69%	-56%	-50%	-61%	-34%	-31%	0%	24%

Note: The percentage change is not recorded in the above table for groups with fewer than 10 placed applicants in that cycle or in the 2017 cycle.

AB.18 All Placed: Daily net change (from all domiciles)
Net increase since previous weekday (2018 cycle up to 13 days after A level results day)

- 2014
- 2015
- 2016
- 2017
- 2018**



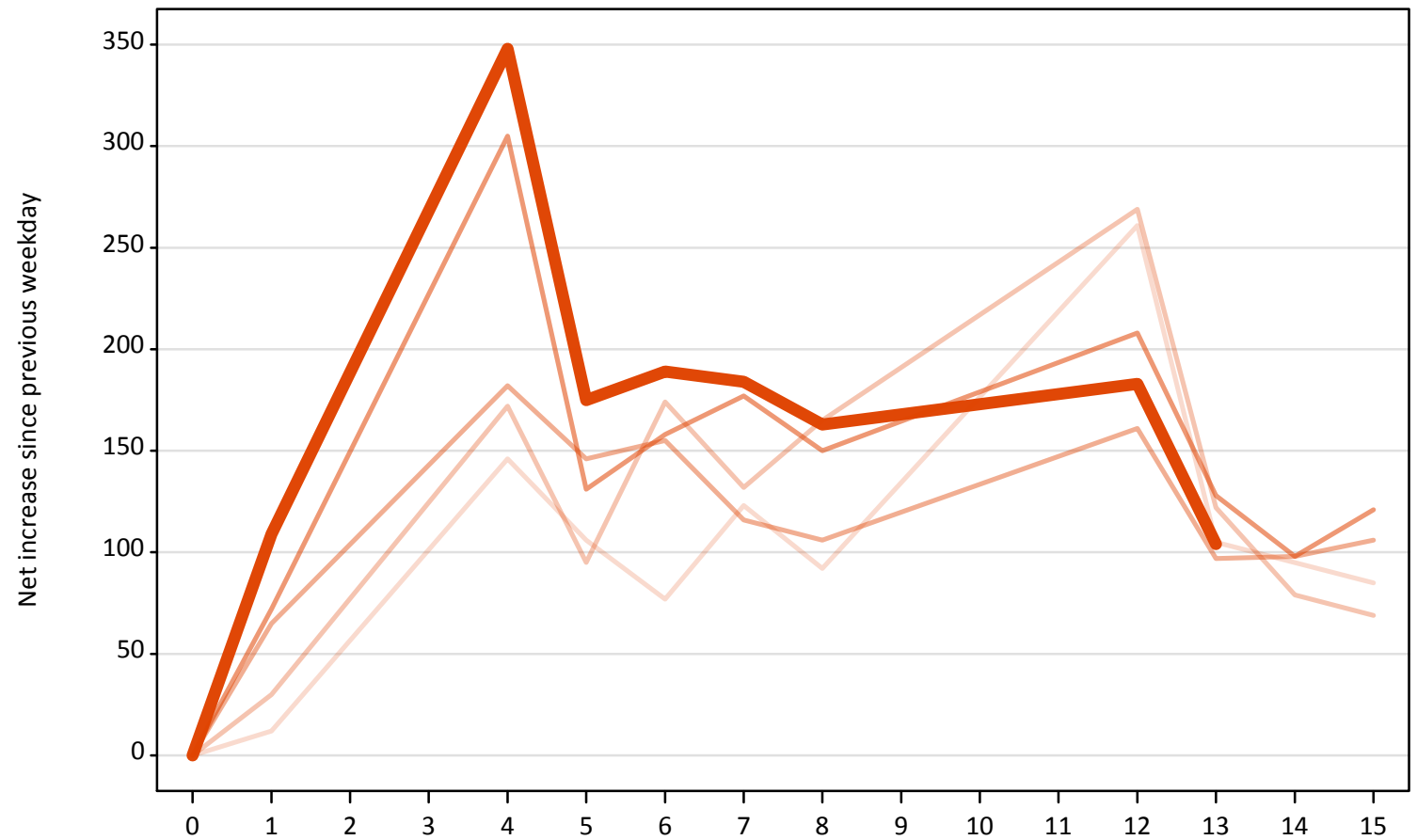
AB.19 All Placed: Daily net change (from all domiciles)

Net increase since previous weekday (2018 cycle up to 13 days after A level results day)

Applicant status, days since A level results day	2014	2015	2016	2017	2018	
All Placed	0	0	0	0	0	
	1	510	560	490	610	540
	4	670	720	480	810	840
	5	360	300	360	320	360
	6	310	440	320	310	390
	7	360	320	290	340	340
	8	640	620	610	530	530
	12	580	880	550	540	480
	13	280	350	360	330	270
	14	290	240	330	310	
	15	260	200	310	320	

AB.20 Placed through Clearing only: Daily net change (from all domiciles)
Net increase since previous weekday (2018 cycle up to 13 days after A level results day)

- 2014
- 2015
- 2016
- 2017
- 2018**



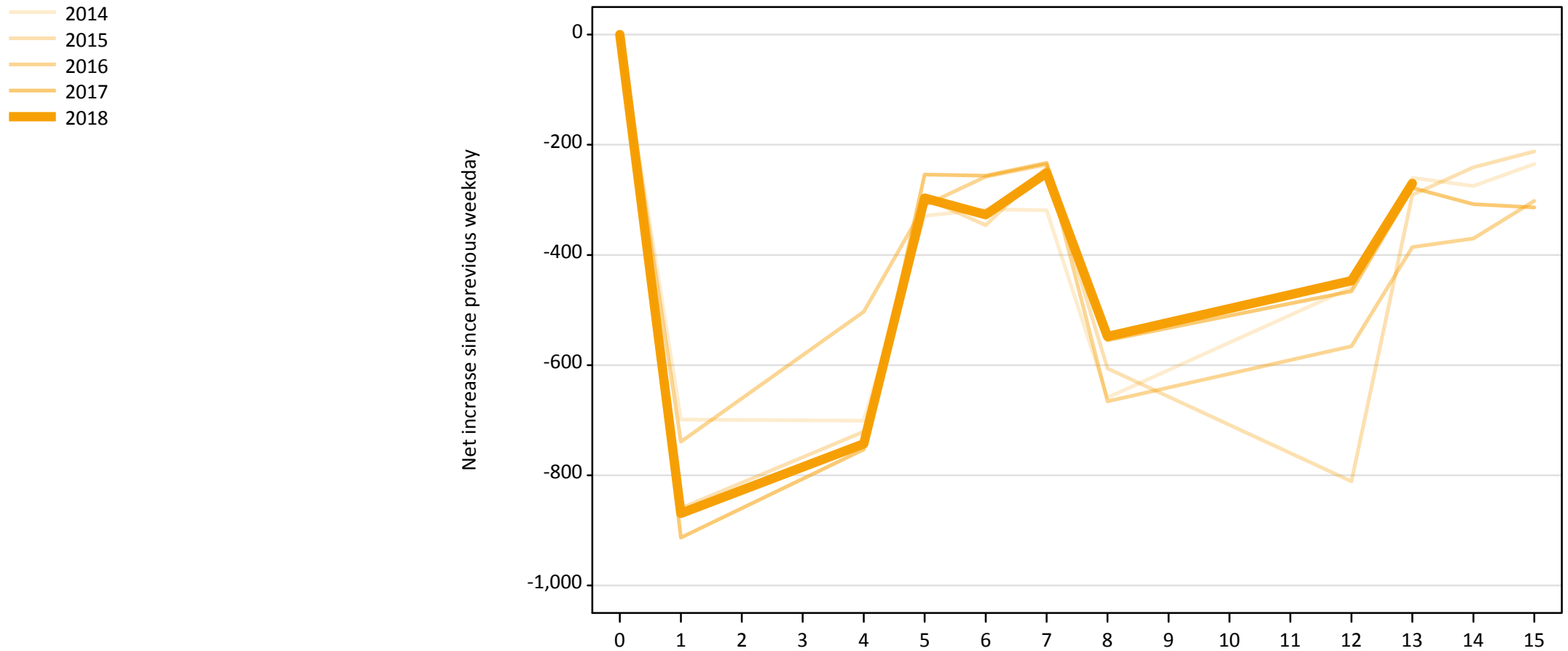
AB.21 Placed through Clearing only: Daily net change (from all domiciles)

Net increase since previous weekday (2018 cycle up to 13 days after A level results day)

Applicant status, days since A level results day		2014	2015	2016	2017	2018
Placed through Clearing only	0	0	0	0	0	0
	1	10	30	70	70	110
	4	150	170	180	310	350
	5	110	100	150	130	180
	6	80	170	160	160	190
	7	120	130	120	180	180
	8	90	170	110	150	160
	12	260	270	160	210	180
	13	110	120	100	130	100
	14	100	80	100	100	
	15	90	70	110	120	

AB.22 Holding Offer: Daily net change (from all domiciles)

Net increase since previous weekday (2018 cycle up to 13 days after A level results day)



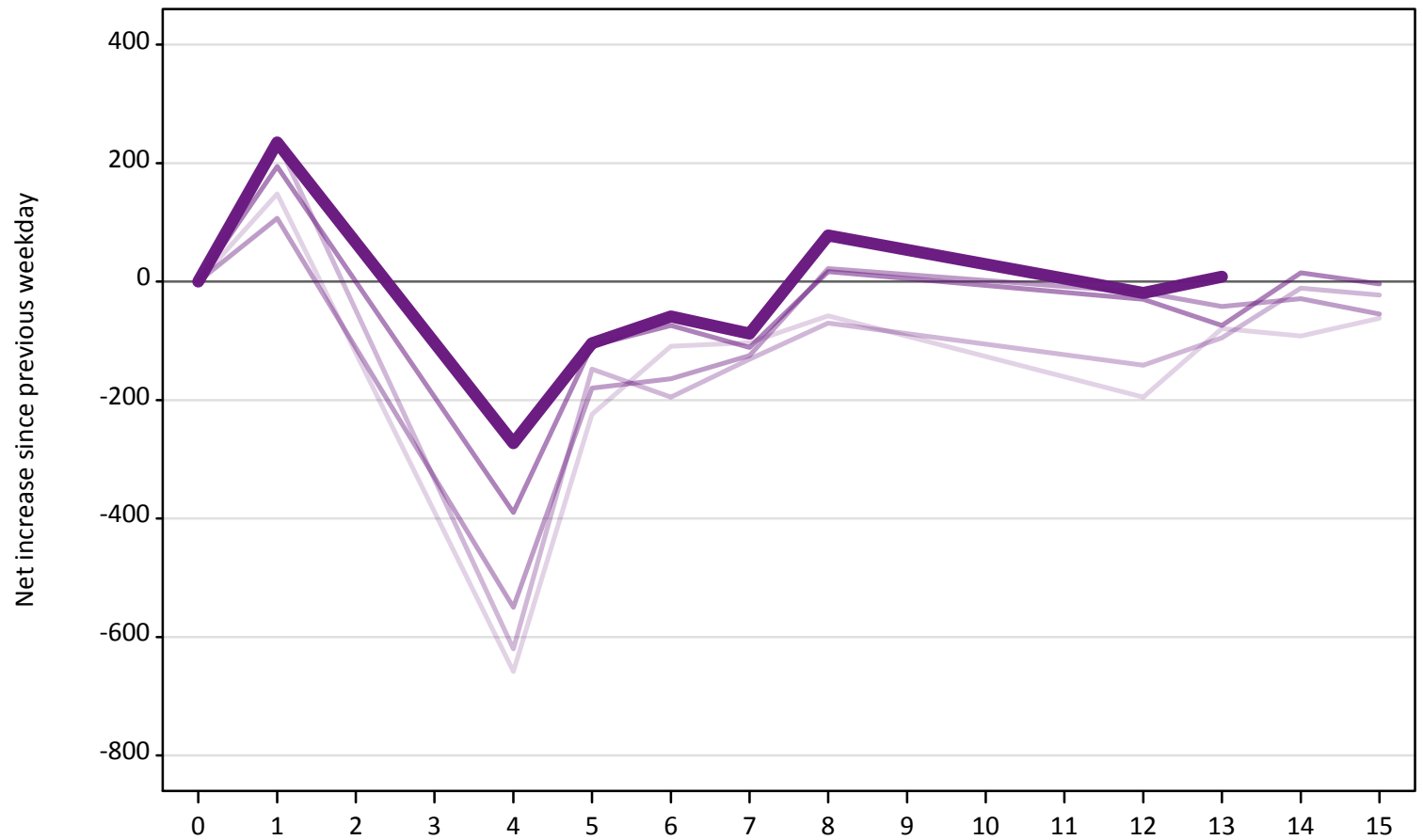
AB.23 Holding Offer: Daily net change (from all domiciles)

Net increase since previous weekday (2018 cycle up to 13 days after A level results day)

Applicant status, days since A level results day	2014	2015	2016	2017	2018	
Holding Offer	0	0	0	0	0	
	1	-700	-860	-740	-910	-870
	4	-700	-720	-500	-750	-740
	5	-330	-300	-310	-250	-300
	6	-320	-350	-260	-260	-330
	7	-320	-240	-240	-230	-250
	8	-660	-610	-670	-560	-550
	12	-460	-810	-570	-470	-450
	13	-260	-290	-390	-280	-270
	14	-280	-240	-370	-310	
	15	-240	-210	-300	-310	

AB.24 Free to be placed in Clearing: Daily net change (from all domiciles)
Net increase since previous weekday (2018 cycle up to 13 days after A level results day)

- 2014
- 2015
- 2016
- 2017
- 2018



AB.25 Free to be placed in Clearing: Daily net change (from all domiciles)

Net increase since previous weekday (2018 cycle up to 13 days after A level results day)

Applicant status, days since A level results day		2014	2015	2016	2017	2018
Free to be placed in Clearing	0	0	0	0	0	0
	1	150	240	110	190	240
	4	-660	-620	-550	-390	-270
	5	-220	-150	-180	-110	-100
	6	-110	-200	-160	-70	-60
	7	-100	-130	-130	-110	-90
	8	-60	-70	20	20	80
	12	-200	-140	-20	-30	-20
	13	-80	-100	-40	-70	10
	14	-90	-10	-30	20	
	15	-60	-20	-60	0	