

Daily Clearing Analysis: Age

B7 Nursing analysis at 00:05 on Wednesday 29 August 2018 (13 days after A level results day)

CB.1 Placed applicants to nursing by country of domicile and age group, 2018 cycle (13 days after A level results day)

Domicile of applicant	Age group				
	17 and under	18	19	20 to 24	25 and over
England	10	4,620	2,220	4,230	7,400
Northern Ireland	0	340	170	270	240
Scotland	20	560	310	790	1,500
Wales	0	350	180	410	680
UK	20	5,870	2,890	5,700	9,810

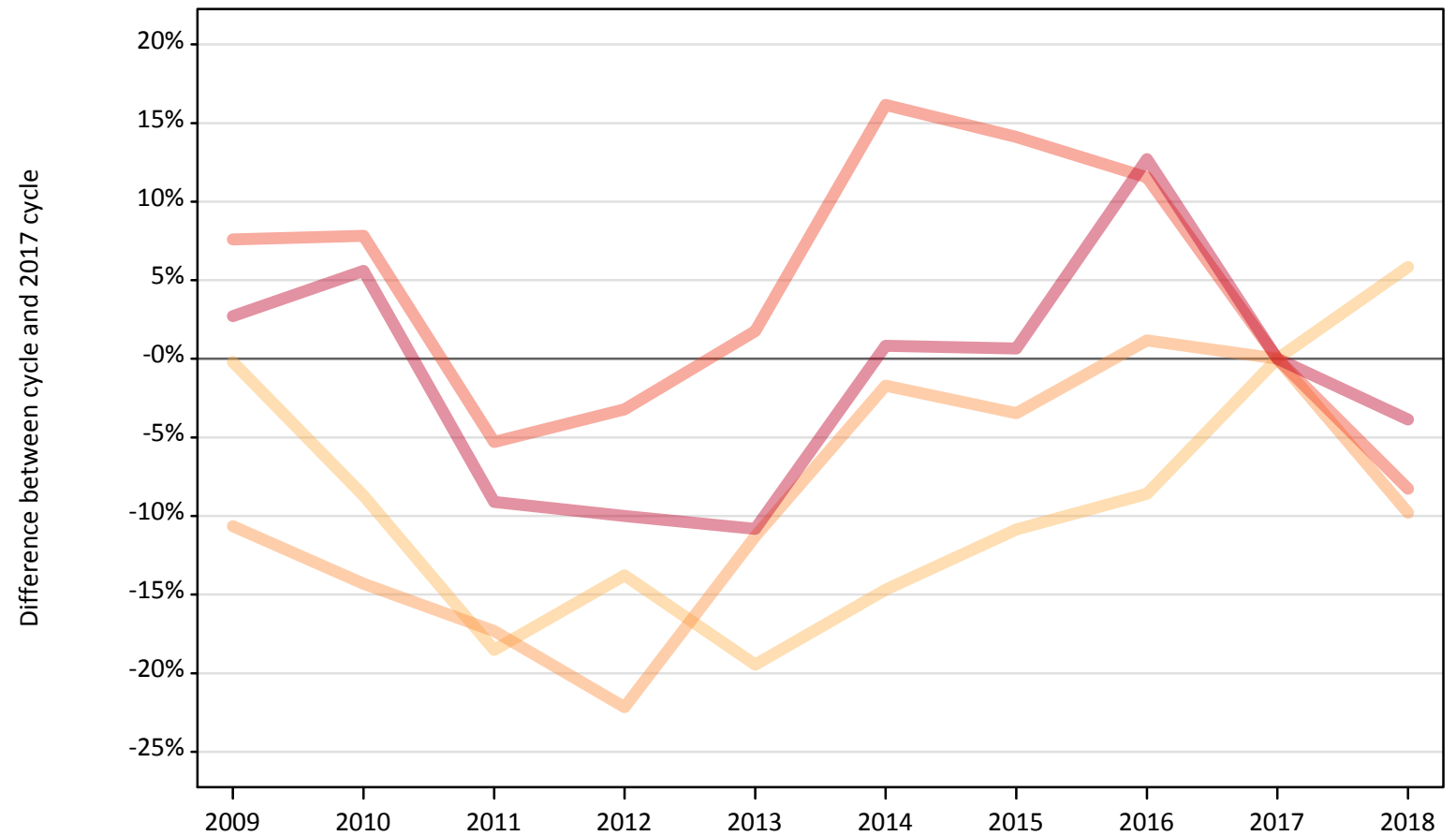
CB.2 Proportion of 18 year old population placed to nursing by country of domicile, 2018 cycle (13 days after A level results day)

Domicile of applicant	Age group	2018
England	18	0.8%
Northern Ireland	18	1.5%
Scotland	18	1.0%
Wales	18	1.0%

CB.3 Placed applicants to nursing from England by age group at 13 days after A level results day

Selected age groups: difference between cycle and 2017 cycle

- 17 and under
- 18
- 19
- 20 to 24
- 25 and over



Note: The percentage change is not plotted in the above chart for groups with fewer than 30 placed applicants in any one cycle.

CB.4 Placed applicants to nursing from England by age group at 13 days after A level results day

All age groups

Domicile of applicant	Age group	2009	2010	2011	2012	2013	2014	2015	2016	2017	2018
England	17 and under	160	80	30	0	0	10	0	0	10	10
	18	4,350	3,980	3,560	3,760	3,510	3,720	3,890	3,990	4,360	4,620
	19	2,200	2,110	2,030	1,920	2,180	2,420	2,380	2,490	2,460	2,220
	20 to 24	4,960	4,970	4,370	4,460	4,690	5,360	5,260	5,140	4,610	4,230
	25 and over	7,910	8,130	7,000	6,930	6,860	7,760	7,750	8,670	7,700	7,400

CB.5 Placed applicants to nursing from England by age group at 13 days after A level results day

Selected age groups: difference between cycle and 2017 cycle

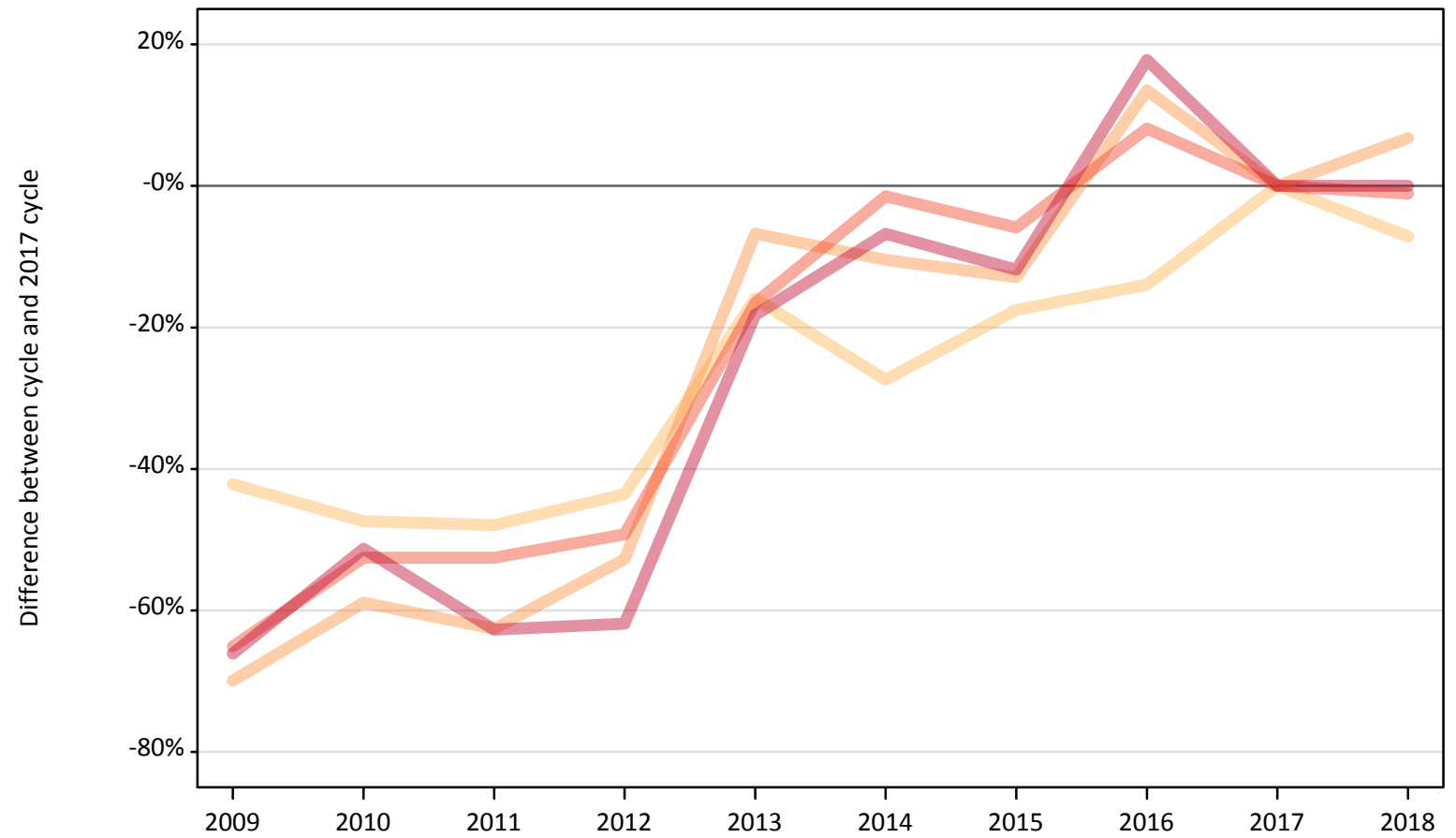
Domicile of applicant	Age group	2009	2010	2011	2012	2013	2014	2015	2016	2017	2018
England	17 and under	2500%	1250%	333%			-17%			0%	-17%
	18	-0%	-9%	-19%	-14%	-19%	-15%	-11%	-9%	0%	6%
	19	-11%	-14%	-17%	-22%	-11%	-2%	-3%	1%	0%	-10%
	20 to 24	8%	8%	-5%	-3%	2%	16%	14%	12%	0%	-8%
	25 and over	3%	6%	-9%	-10%	-11%	1%	1%	13%	0%	-4%

Note: The percentage change is not recorded in the above table for groups with fewer than 10 placed applicants in that cycle or in the 2017 cycle.

CB.6 Placed applicants to nursing from Northern Ireland by age group at 13 days after A level results day

Selected age groups: difference between cycle and 2017 cycle

- 17 and under
- 18
- 19
- 20 to 24
- 25 and over



Note: The percentage change is not plotted in the above chart for groups with fewer than 30 placed applicants in any one cycle.

CB.7 Placed applicants to nursing from Northern Ireland by age group at 13 days after A level results day

All age groups

Domicile of applicant	Age group	2009	2010	2011	2012	2013	2014	2015	2016	2017	2018
Northern Ireland	17 and under	0	0	0	0	0	0	0	0	0	0
	18	210	190	190	210	310	270	300	310	370	340
	19	50	70	60	80	150	150	140	190	160	170
	20 to 24	100	130	130	140	230	270	260	290	270	270
	25 and over	80	120	90	90	190	220	210	280	240	240

CB.8 Placed applicants to nursing from Northern Ireland by age group at 13 days after A level results day

Selected age groups: difference between cycle and 2017 cycle

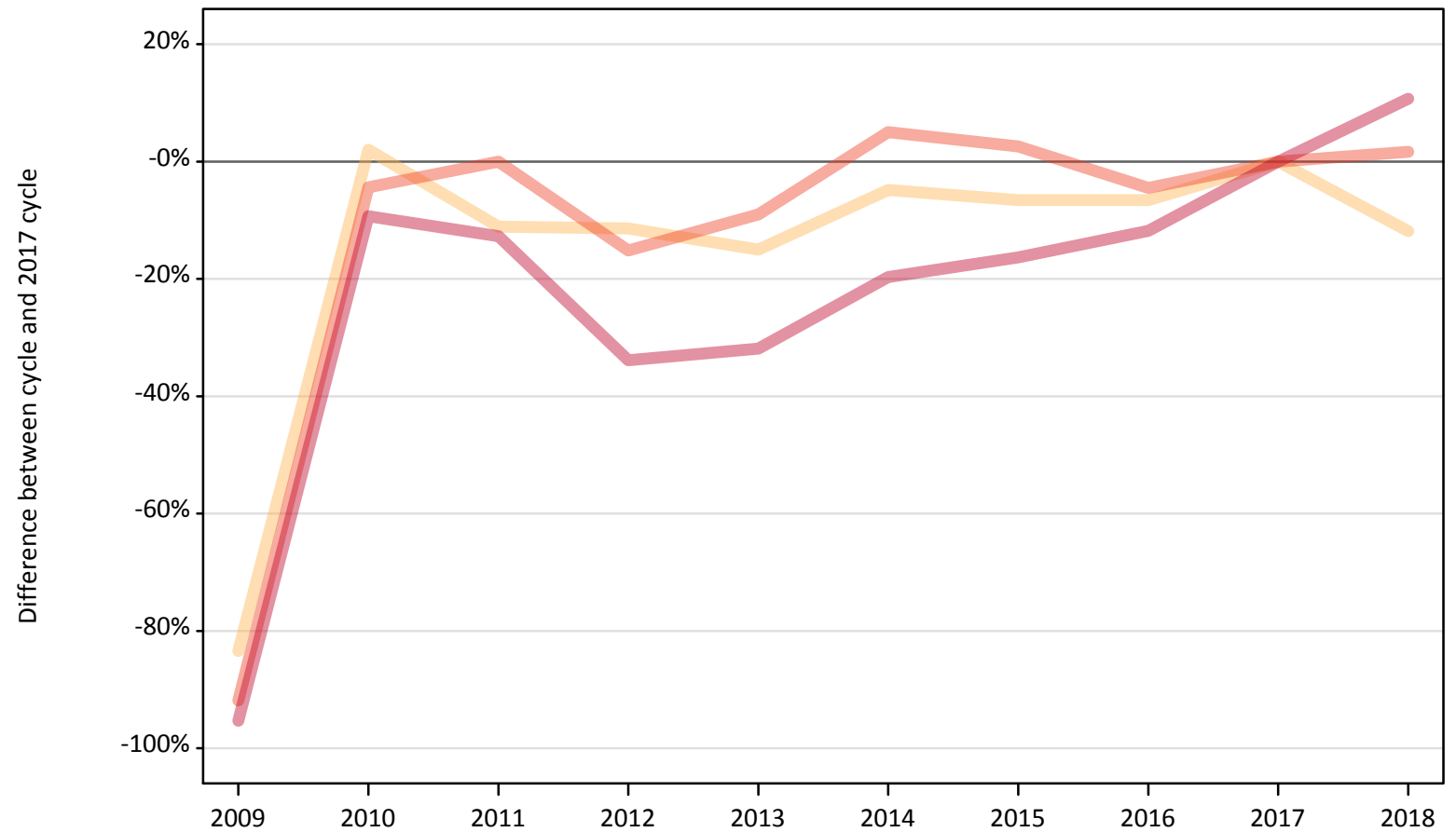
Domicile of applicant	Age group	2009	2010	2011	2012	2013	2014	2015	2016	2017	2018
Northern Ireland	17 and under										
	18	-42%	-47%	-48%	-44%	-16%	-27%	-18%	-14%	0%	-7%
	19	-70%	-59%	-63%	-53%	-7%	-10%	-13%	13%	0%	7%
	20 to 24	-65%	-53%	-53%	-49%	-17%	-1%	-6%	8%	0%	-1%
	25 and over	-66%	-51%	-63%	-62%	-18%	-7%	-12%	18%	0%	0%

Note: The percentage change is not recorded in the above table for groups with fewer than 10 placed applicants in that cycle or in the 2017 cycle.

CB.9 Placed applicants to nursing from Scotland by age group at 13 days after A level results day

Selected age groups: difference between cycle and 2017 cycle

- 17 and under
- 18
- 19
- 20 to 24
- 25 and over



Note: The percentage change is not plotted in the above chart for groups with fewer than 30 placed applicants in any one cycle.

CB.10 Placed applicants to nursing from Scotland by age group at 13 days after A level results day

All age groups

Domicile of applicant	Age group	2009	2010	2011	2012	2013	2014	2015	2016	2017	2018
Scotland	17 and under	0	40	30	20	20	20	10	20	20	20
	18	110	650	570	570	540	610	600	600	640	560
	19	30	320	300	290	310	330	300	330	300	310
	20 to 24	60	740	780	660	710	820	800	740	780	790
	25 and over	60	1,230	1,180	890	920	1,090	1,130	1,190	1,350	1,500

CB.11 Placed applicants to nursing from Scotland by age group at 13 days after A level results day

Selected age groups: difference between cycle and 2017 cycle

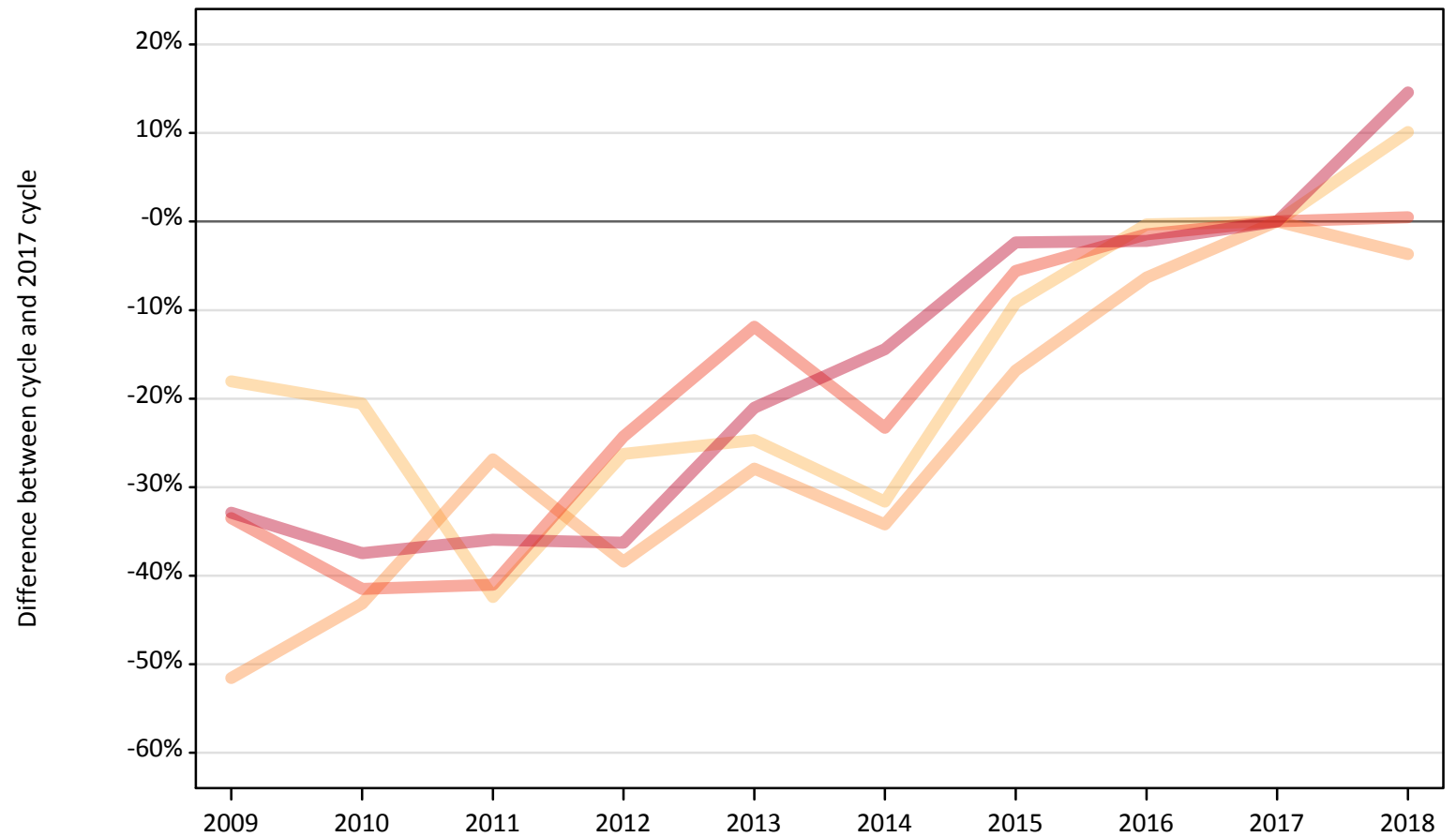
Domicile of applicant	Age group	2009	2010	2011	2012	2013	2014	2015	2016	2017	2018
Scotland	17 and under		110%	19%	14%	5%	-19%	-38%	-24%	0%	-24%
	18	-83%	2%	-11%	-11%	-15%	-5%	-7%	-7%	0%	-12%
	19	-90%	7%	-2%	-6%	1%	8%	1%	9%	0%	3%
	20 to 24	-92%	-4%	0%	-15%	-9%	5%	3%	-5%	0%	2%
	25 and over	-95%	-9%	-13%	-34%	-32%	-20%	-16%	-12%	0%	11%

Note: The percentage change is not recorded in the above table for groups with fewer than 10 placed applicants in that cycle or in the 2017 cycle.

CB.12 Placed applicants to nursing from Wales by age group at 13 days after A level results day

Selected age groups: difference between cycle and 2017 cycle

- 17 and under
- 18
- 19
- 20 to 24
- 25 and over



Note: The percentage change is not plotted in the above chart for groups with fewer than 30 placed applicants in any one cycle.

CB.13 Placed applicants to nursing from Wales by age group at 13 days after A level results day

All age groups

Domicile of applicant	Age group	2009	2010	2011	2012	2013	2014	2015	2016	2017	2018
Wales	17 and under	0	0	0	0	0	0	0	0	0	0
	18	260	250	180	230	240	220	290	320	320	350
	19	90	110	140	120	140	130	160	180	190	180
	20 to 24	270	240	240	310	360	320	390	410	410	410
	25 and over	400	370	380	380	470	510	580	580	590	680

CB.14 Placed applicants to nursing from Wales by age group at 13 days after A level results day

Selected age groups: difference between cycle and 2017 cycle

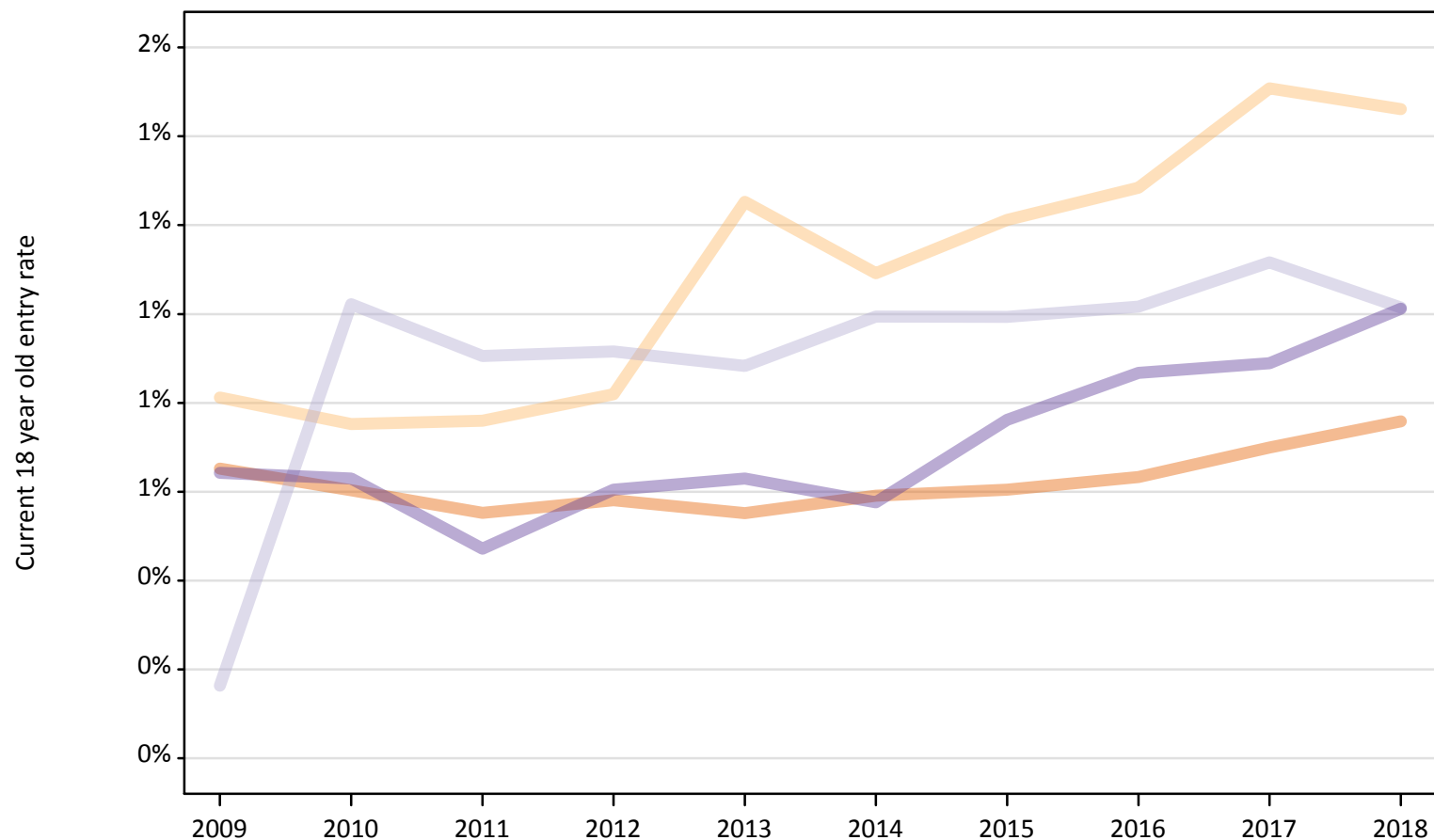
Domicile of applicant	Age group	2009	2010	2011	2012	2013	2014	2015	2016	2017	2018
Wales	17 and under										
	18	-18%	-21%	-42%	-26%	-25%	-32%	-9%	-0%	0%	10%
	19	-52%	-43%	-27%	-38%	-28%	-34%	-17%	-6%	0%	-4%
	20 to 24	-33%	-42%	-41%	-24%	-12%	-23%	-6%	-1%	0%	0%
	25 and over	-33%	-37%	-36%	-36%	-21%	-14%	-2%	-2%	0%	15%

Note: The percentage change is not recorded in the above table for groups with fewer than 10 placed applicants in that cycle or in the 2017 cycle.

CB.15 Entry rates to nursing for 18 year olds by UK country of domicile: 13 days after A level results day

Placed 18 year old applicants as a proportion of the 18 year old population

- England
- Northern Ireland
- Scotland
- Wales



CB.16 Entry rates to nursing for 18 year olds by UK country of domicile: 13 days after A level results day

Placed 18 year old applicants as a proportion of the 18 year old population

Domicile of applicant	Age group	2009	2010	2011	2012	2013	2014	2015	2016	2017	2018
England	18	0.7%	0.6%	0.6%	0.6%	0.6%	0.6%	0.6%	0.6%	0.7%	0.8%
Northern Ireland	18	0.8%	0.8%	0.8%	0.8%	1.3%	1.1%	1.2%	1.3%	1.5%	1.5%
Scotland	18	0.2%	1.0%	0.9%	0.9%	0.9%	1.0%	1.0%	1.0%	1.1%	1.0%
Wales	18	0.6%	0.6%	0.5%	0.6%	0.6%	0.6%	0.8%	0.9%	0.9%	1.0%