

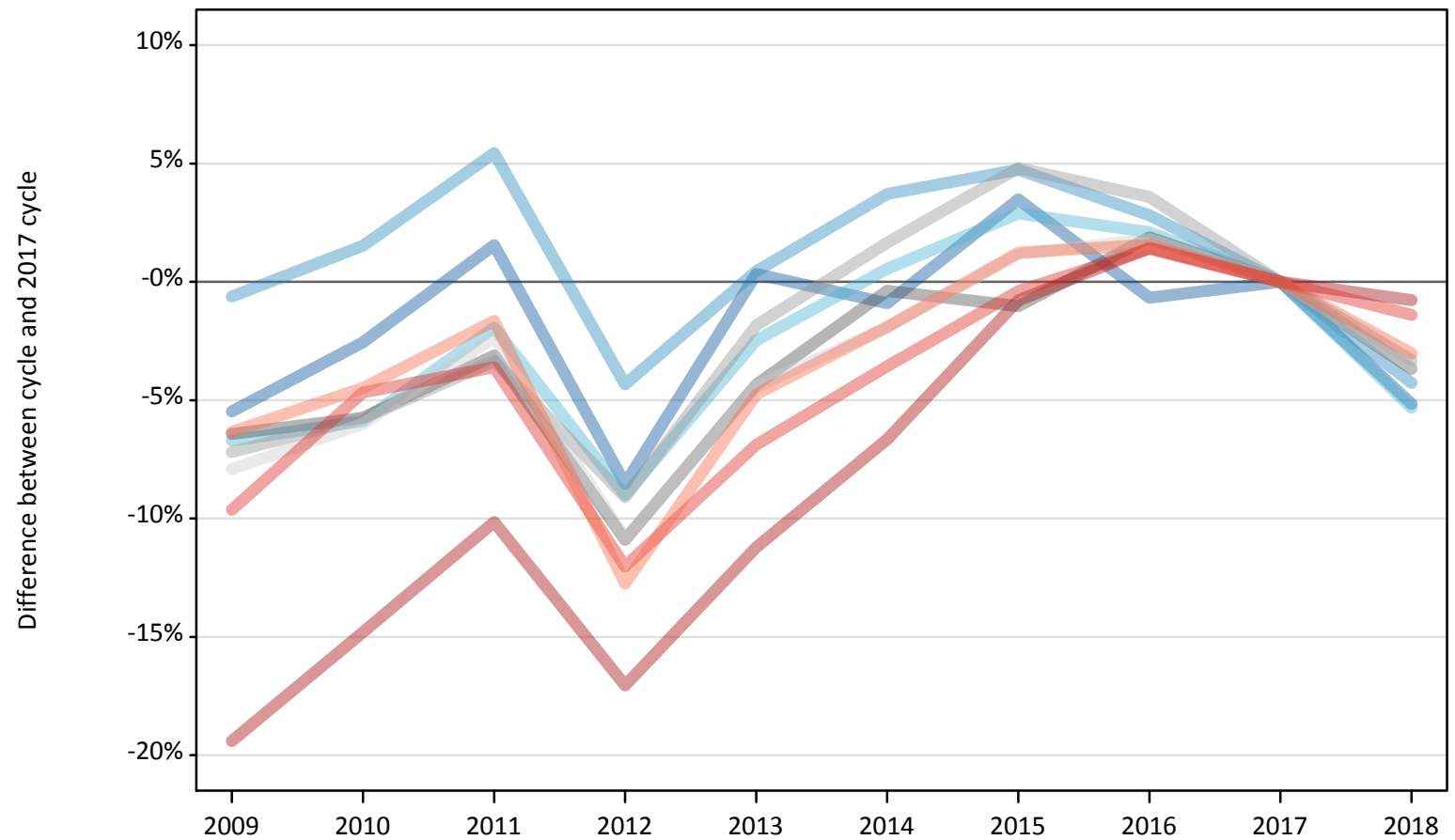
# Daily Clearing Analysis: Region

Analysis at 00:05 on Wednesday 29 August 2018 (13 days after A level results day)

## R.1 Placed applicants by region of domicile: 13 days after A level results day

Placed applicants: change relative to 2017 cycle totals

- North East
- North West
- Yorkshire and The Humber
- East Midlands
- West Midlands
- East of England
- London
- South East
- South West



Note: The percentage change is not plotted in the above chart for groups with fewer than 30 placed applicants in any one cycle.

## R.2 Placed applicants by region of domicile: 13 days after A level results day

Applicant Status	Domicile	2009	2010	2011	2012	2013	2014	2015	2016	2017	2018
Placed	North East	14,470	14,910	15,540	14,000	15,350	15,170	15,840	15,200	15,300	14,510
	North West	45,790	46,780	48,580	44,080	46,280	47,790	48,260	47,370	46,070	44,110
	Yorkshire and The Humber	30,330	30,600	31,880	29,580	31,710	32,690	33,450	33,190	32,510	30,780
	East Midlands	26,000	26,190	26,930	24,760	26,580	27,680	27,500	28,310	27,790	26,770
	West Midlands	34,410	34,940	35,830	33,700	36,390	37,690	38,860	38,400	37,070	35,840
	East of England	34,190	34,900	36,250	33,100	35,480	36,410	37,550	37,800	37,120	35,780
	London	56,540	59,770	63,040	58,190	62,280	65,480	69,600	71,170	70,150	69,610
	South East	53,160	56,070	56,700	51,750	54,770	56,730	58,600	59,640	58,820	58,000
	South West	30,990	31,610	32,540	28,870	31,510	32,460	33,500	33,600	33,090	32,090
	(England total)	325,860	335,760	347,290	318,030	340,360	352,080	363,150	364,680	357,940	347,500
	Scotland	26,810	28,490	28,000	28,030	28,550	29,190	32,060	33,400	34,090	34,550
	Northern Ireland	13,350	13,400	13,550	12,730	14,110	14,120	13,840	14,620	14,170	13,720
	Wales	18,200	17,280	17,120	17,720	17,880	18,660	19,120	19,250	18,770	18,350
	UK	384,220	394,930	405,970	376,510	400,900	414,050	428,160	431,950	424,970	414,120

### R.3 Placed applicants by region of domicile: 13 days after A level results day

Placed applicants: change relative to 2017 cycle totals

Applicant Status	Domicile	2009	2010	2011	2012	2013	2014	2015	2016	2017	2018
Placed	North East	-5%	-3%	2%	-9%	0%	-1%	3%	-1%	0%	-5%
	North West	-1%	2%	5%	-4%	0%	4%	5%	3%	0%	-4%
	Yorkshire and The Humber	-7%	-6%	-2%	-9%	-2%	1%	3%	2%	0%	-5%
	East Midlands	-6%	-6%	-3%	-11%	-4%	-0%	-1%	2%	0%	-4%
	West Midlands	-7%	-6%	-3%	-9%	-2%	2%	5%	4%	0%	-3%
	East of England	-8%	-6%	-2%	-11%	-4%	-2%	1%	2%	0%	-4%
	London	-19%	-15%	-10%	-17%	-11%	-7%	-1%	1%	0%	-1%
	South East	-10%	-5%	-4%	-12%	-7%	-4%	-0%	1%	0%	-1%
	South West	-6%	-4%	-2%	-13%	-5%	-2%	1%	2%	0%	-3%
	(England total)	-9%	-6%	-3%	-11%	-5%	-2%	1%	2%	0%	-3%
	Scotland	-21%	-16%	-18%	-18%	-16%	-14%	-6%	-2%	0%	1%
	Northern Ireland	-6%	-5%	-4%	-10%	-0%	-0%	-2%	3%	0%	-3%
	Wales	-3%	-8%	-9%	-6%	-5%	-1%	2%	3%	0%	-2%
	UK	-10%	-7%	-4%	-11%	-6%	-3%	1%	2%	0%	-3%

Note: The percentage change is not recorded in the above table for groups with fewer than 10 placed applicants in that cycle or in the 2017 cycle.

#### R.4 Placed applicants by region of domicile: 13 days after A level results day

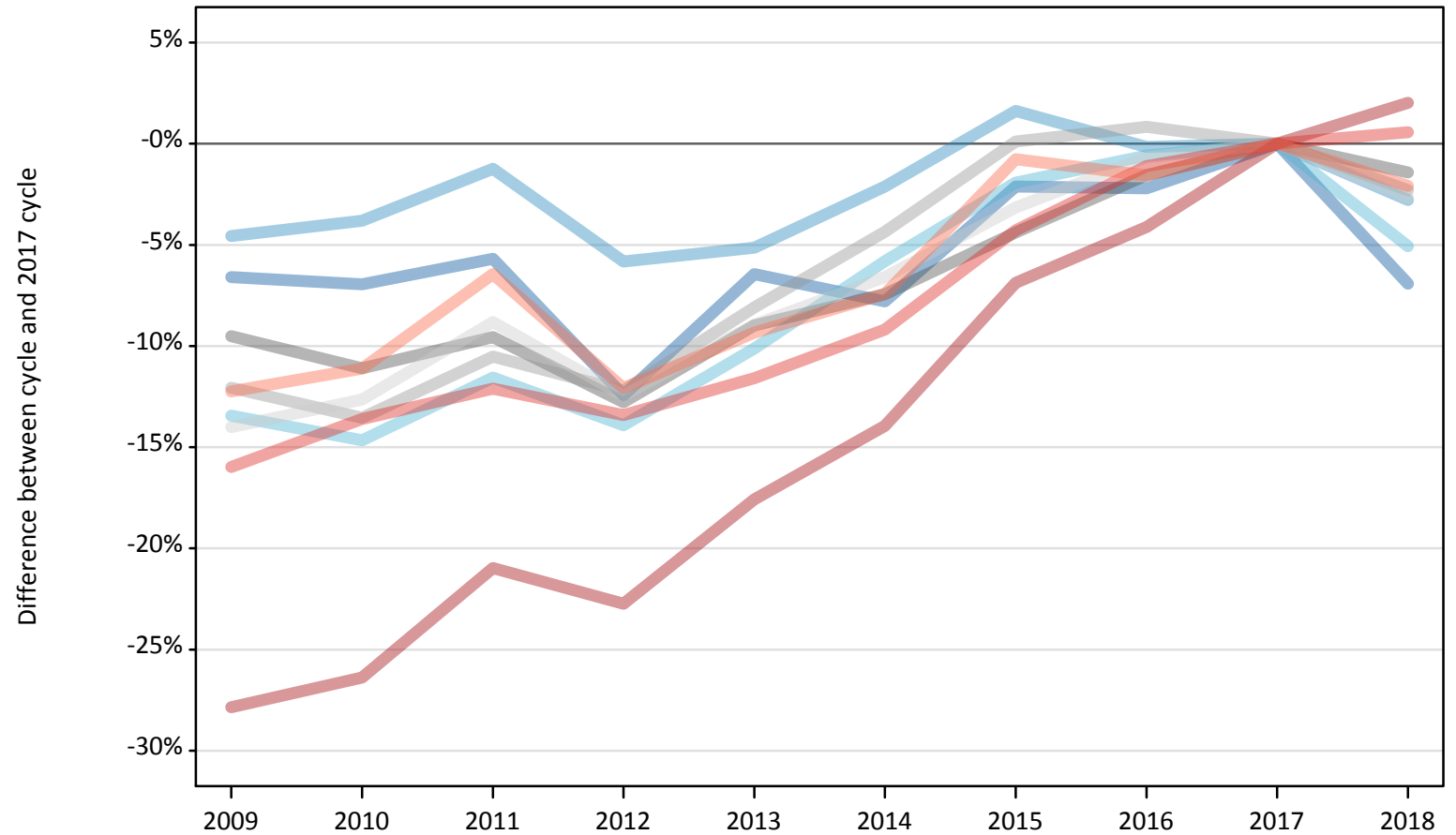
Placed applicants: absolute change relative to 2017 cycle totals

Applicant Status	Domicile	2009	2010	2011	2012	2013	2014	2015	2016	2017	2018
Placed	North East	-840	-390	240	-1,310	50	-140	530	-100	0	-790
	North West	-290	700	2,510	-2,000	210	1,710	2,180	1,300	0	-1,970
	Yorkshire and The Humber	-2,180	-1,910	-630	-2,930	-810	180	940	680	0	-1,730
	East Midlands	-1,790	-1,600	-860	-3,030	-1,210	-110	-290	520	0	-1,020
	West Midlands	-2,670	-2,140	-1,240	-3,370	-680	610	1,780	1,330	0	-1,230
	East of England	-2,940	-2,230	-870	-4,020	-1,640	-720	430	670	0	-1,340
	London	-13,610	-10,380	-7,120	-11,960	-7,870	-4,670	-550	1,010	0	-550
	South East	-5,670	-2,750	-2,120	-7,070	-4,050	-2,100	-230	820	0	-820
	South West	-2,100	-1,480	-550	-4,220	-1,570	-630	410	520	0	-1,000
	(England total)	-32,080	-22,180	-10,650	-39,900	-17,580	-5,860	5,210	6,740	0	-10,440
	Scotland	-7,280	-5,600	-6,080	-6,060	-5,540	-4,900	-2,030	-690	0	460
	Northern Ireland	-820	-770	-610	-1,440	-60	-50	-330	460	0	-440
	Wales	-580	-1,490	-1,650	-1,060	-890	-120	350	470	0	-430
	UK	-40,750	-30,040	-18,990	-48,460	-24,070	-10,920	3,190	6,980	0	-10,850

## R.5 Placed 18 year old applicants by region of domicile: 13 days after A level results day

Placed 18 year old applicants: change relative to 2017 cycle totals

- North East
- North West
- Yorkshire and The Humber
- East Midlands
- West Midlands
- East of England
- London
- South East
- South West



Note: The percentage change is not plotted in the above chart for groups with fewer than 30 placed applicants in any one cycle.

## R.6 Placed 18 year old applicants by region of domicile: 13 days after A level results day

Applicant Status	Domicile	2009	2010	2011	2012	2013	2014	2015	2016	2017	2018
Placed	North East	8,060	8,030	8,140	7,560	8,070	7,960	8,450	8,440	8,630	8,030
	North West	25,540	25,740	26,430	25,200	25,390	26,200	27,190	26,720	26,760	26,020
	Yorkshire and The Humber	16,600	16,370	16,960	16,510	17,240	18,060	18,810	19,070	19,180	18,200
	East Midlands	14,730	14,470	14,720	14,200	14,810	15,060	15,560	16,020	16,270	16,040
	West Midlands	18,620	18,310	18,950	18,590	19,460	20,250	21,200	21,350	21,170	20,690
	East of England	19,720	20,030	20,910	20,080	20,880	21,420	22,210	22,780	22,930	22,320
	London	27,380	27,940	29,990	29,320	31,270	32,650	35,340	36,380	37,940	38,710
	South East	29,720	30,560	31,080	30,620	31,270	32,120	33,850	34,970	35,360	35,570
	South West	15,410	15,610	16,430	15,440	15,930	16,260	17,430	17,290	17,570	17,200
	(England total)	175,770	177,050	183,600	177,510	184,310	189,980	200,030	203,020	205,810	202,780
	Scotland	14,460	14,690	13,990	14,060	14,140	14,310	14,400	14,640	14,640	14,610
	Northern Ireland	9,330	8,820	8,590	8,200	8,710	8,510	8,420	8,570	8,500	8,120
	Wales	10,310	9,760	9,410	9,700	9,630	10,030	10,500	10,600	10,250	10,100
	UK	209,860	210,330	215,590	209,470	216,800	222,830	233,350	236,820	239,200	235,620

## R.7 Placed 18 year old applicants by region of domicile: 13 days after A level results day

Placed 18 year old applicants: change relative to 2017 cycle totals

Applicant Status	Domicile	2009	2010	2011	2012	2013	2014	2015	2016	2017	2018
Placed	North East	-7%	-7%	-6%	-12%	-6%	-8%	-2%	-2%	0%	-7%
	North West	-5%	-4%	-1%	-6%	-5%	-2%	2%	-0%	0%	-3%
	Yorkshire and The Humber	-13%	-15%	-12%	-14%	-10%	-6%	-2%	-1%	0%	-5%
	East Midlands	-10%	-11%	-10%	-13%	-9%	-7%	-4%	-2%	0%	-1%
	West Midlands	-12%	-14%	-11%	-12%	-8%	-4%	0%	1%	0%	-2%
	East of England	-14%	-13%	-9%	-12%	-9%	-7%	-3%	-1%	0%	-3%
	London	-28%	-26%	-21%	-23%	-18%	-14%	-7%	-4%	0%	2%
	South East	-16%	-14%	-12%	-13%	-12%	-9%	-4%	-1%	0%	1%
	South West	-12%	-11%	-6%	-12%	-9%	-7%	-1%	-2%	0%	-2%
	(England total)	-15%	-14%	-11%	-14%	-10%	-8%	-3%	-1%	0%	-1%
	Scotland	-1%	0%	-4%	-4%	-3%	-2%	-2%	-0%	0%	-0%
	Northern Ireland	10%	4%	1%	-3%	3%	0%	-1%	1%	0%	-4%
	Wales	1%	-5%	-8%	-5%	-6%	-2%	2%	3%	0%	-2%
	UK	-12%	-12%	-10%	-12%	-9%	-7%	-2%	-1%	0%	-1%

Note: The percentage change is not recorded in the above table for groups with fewer than 10 placed applicants in that cycle or in the 2017 cycle.

## R.8 Placed 18 year old applicants by region of domicile: 13 days after A level results day

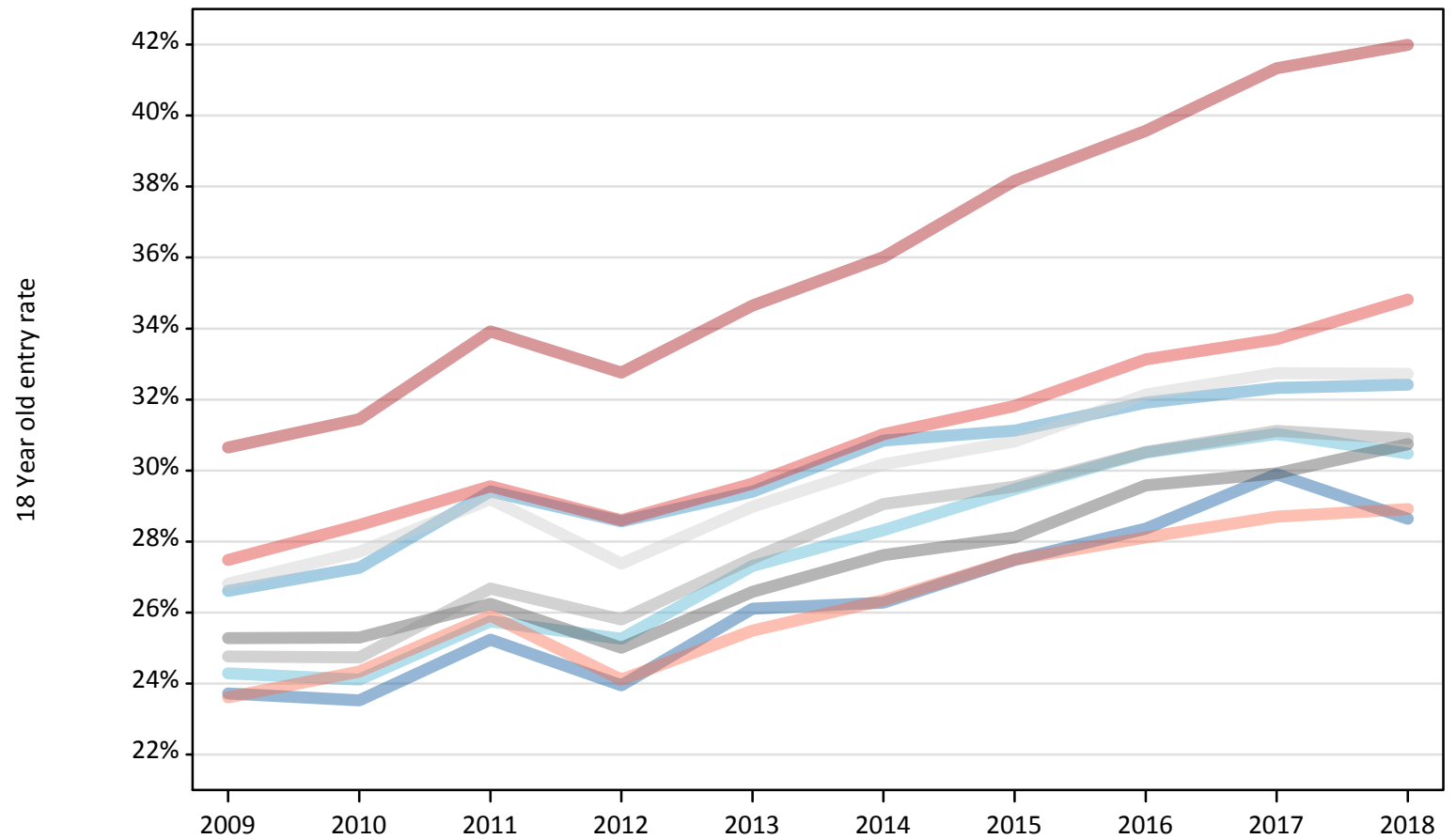
Placed 18 year old applicants: absolute change relative to 2017 cycle totals

Applicant Status	Domicile	2009	2010	2011	2012	2013	2014	2015	2016	2017	2018
Placed	North East	-570	-600	-490	-1,070	-560	-670	-180	-190	0	-600
	North West	-1,220	-1,020	-330	-1,560	-1,370	-560	440	-40	0	-740
	Yorkshire and The Humber	-2,580	-2,810	-2,220	-2,670	-1,940	-1,110	-370	-110	0	-970
	East Midlands	-1,550	-1,810	-1,560	-2,080	-1,460	-1,210	-710	-250	0	-230
	West Midlands	-2,550	-2,870	-2,230	-2,580	-1,710	-920	20	180	0	-490
	East of England	-3,210	-2,900	-2,020	-2,850	-2,050	-1,510	-720	-150	0	-610
	London	-10,570	-10,010	-7,960	-8,630	-6,670	-5,290	-2,610	-1,560	0	770
	South East	-5,650	-4,810	-4,280	-4,740	-4,100	-3,250	-1,510	-390	0	200
	South West	-2,150	-1,950	-1,130	-2,120	-1,640	-1,300	-130	-280	0	-370
	(England total)	-30,050	-28,770	-22,210	-28,300	-21,500	-15,830	-5,780	-2,800	0	-3,030
	Scotland	-180	50	-650	-580	-500	-330	-240	0	0	-30
	Northern Ireland	830	330	100	-290	220	20	-80	70	0	-370
	Wales	60	-490	-850	-560	-620	-230	240	340	0	-160
	UK	-29,340	-28,870	-23,610	-29,730	-22,400	-16,370	-5,850	-2,380	0	-3,590



**R.9 Placed 18 year old applicants by region of domicile: 13 days after A level results day**  
Placed 18 year old applicants: entry rate

- North East
- North West
- Yorkshire and The Humber
- East Midlands
- West Midlands
- East of England
- London
- South East
- South West



## R.10 Placed 18 year old applicants by region of domicile: 13 days after A level results day

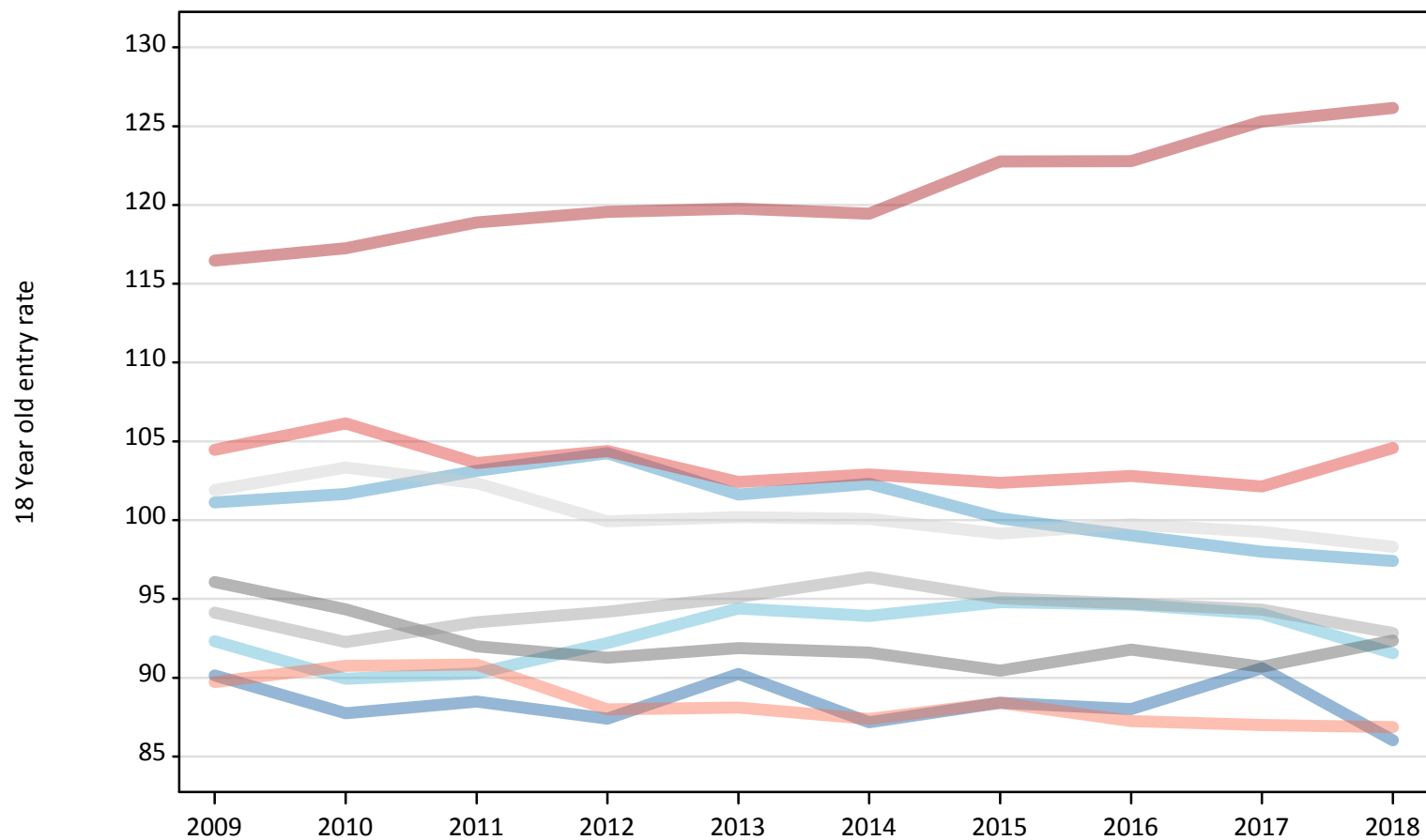
### Placed 18 year old applicants: entry rate

Applicant Status	Domicile	2009	2010	2011	2012	2013	2014	2015	2016	2017	2018
Placed	North East	23.7%	23.5%	25.2%	23.9%	26.1%	26.3%	27.5%	28.4%	29.9%	28.6%
	North West	26.6%	27.3%	29.4%	28.6%	29.4%	30.8%	31.1%	31.9%	32.3%	32.4%
	Yorkshire and The Humber	24.3%	24.1%	25.8%	25.3%	27.3%	28.3%	29.5%	30.5%	31.0%	30.5%
	East Midlands	25.3%	25.3%	26.2%	25.0%	26.6%	27.6%	28.1%	29.6%	29.9%	30.7%
	West Midlands	24.8%	24.7%	26.7%	25.8%	27.5%	29.1%	29.5%	30.5%	31.1%	30.9%
	East of England	26.8%	27.7%	29.2%	27.4%	29.0%	30.2%	30.8%	32.1%	32.7%	32.7%
	London	30.6%	31.4%	33.9%	32.8%	34.7%	36.0%	38.2%	39.6%	41.3%	42.0%
	South East	27.5%	28.5%	29.6%	28.6%	29.6%	31.0%	31.8%	33.1%	33.7%	34.8%
	South West	23.6%	24.3%	25.9%	24.1%	25.5%	26.3%	27.5%	28.1%	28.7%	28.9%
	(England total)	26.3%	26.8%	28.5%	27.4%	28.9%	30.1%	31.1%	32.2%	33.0%	33.3%
	Scotland	22.3%	23.0%	22.3%	22.7%	23.0%	23.3%	23.9%	24.9%	25.5%	26.3%
	Northern Ireland	35.9%	34.6%	34.4%	32.6%	35.6%	35.1%	33.9%	35.0%	35.1%	35.0%
	Wales	25.6%	24.5%	24.4%	25.2%	25.5%	26.7%	27.9%	29.2%	28.9%	29.4%
	UK	26.3%	26.6%	28.0%	27.1%	28.5%	29.6%	30.5%	31.6%	32.3%	32.6%

### R.11 Placed 18 year old applicants by region of domicile: 13 days after A level results day

Placed 18 year old applicants: entry rates (indexed to 100 = England)

- North East
- North West
- Yorkshire and The Humber
- East Midlands
- West Midlands
- East of England
- London
- South East
- South West



**R.12 Placed 18 year old applicants by region of domicile: 13 days after A level results day**

Placed 18 year old applicants: entry rate (indexed to 100 = England)

Applicant Status	Domicile	2009	2010	2011	2012	2013	2014	2015	2016	2017	2018
Placed	North East	90	88	88	87	90	87	88	88	91	86
	North West	101	102	103	104	102	102	100	99	98	97
	Yorkshire and The Humber	92	90	90	92	94	94	95	95	94	92
	East Midlands	96	94	92	91	92	92	90	92	91	92
	West Midlands	94	92	94	94	95	96	95	95	94	93
	East of England	102	103	102	100	100	100	99	100	99	98
	London	116	117	119	120	120	119	123	123	125	126
	South East	104	106	104	104	102	103	102	103	102	105
	South West	90	91	91	88	88	87	88	87	87	87
	(England total)	100	100	100	100	100	100	100	100	100	100