

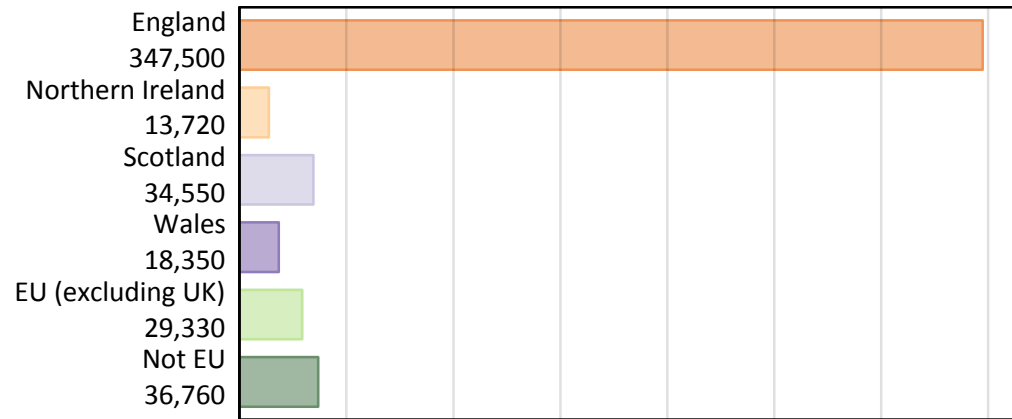
Daily Clearing Analysis: Country

Analysis at 00:05 on Wednesday 29 August 2018 (13 days after A level results day)

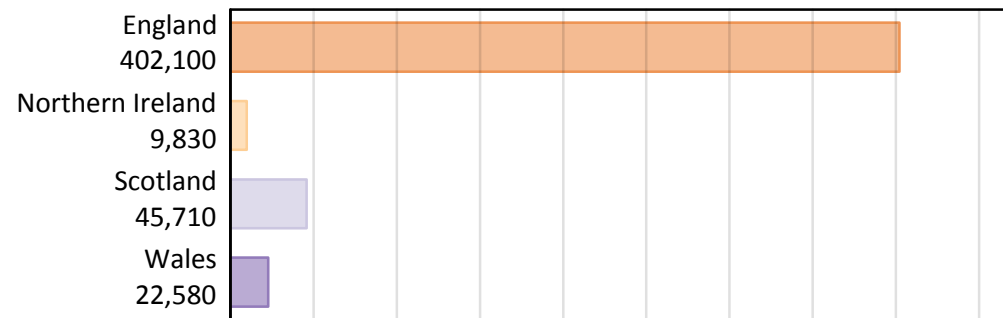
B.1 Placed applicants by country of provider and domicile, 2018 cycle

Domicile of applicant	Country of provider				
	England	Northern Ireland	Scotland	Wales	UK
England	332,760	320	4,590	9,830	347,500
Northern Ireland	3,780	8,820	980	140	13,720
Scotland	1,470	30	33,020	40	34,550
Wales	7,730	10	140	10,460	18,350
EU (excluding UK)	23,810	390	4,040	1,100	29,330
Not EU	32,560	270	2,940	1,000	36,760
All	402,100	9,830	45,710	22,580	480,220

B.2 Placed applicants by domicile group



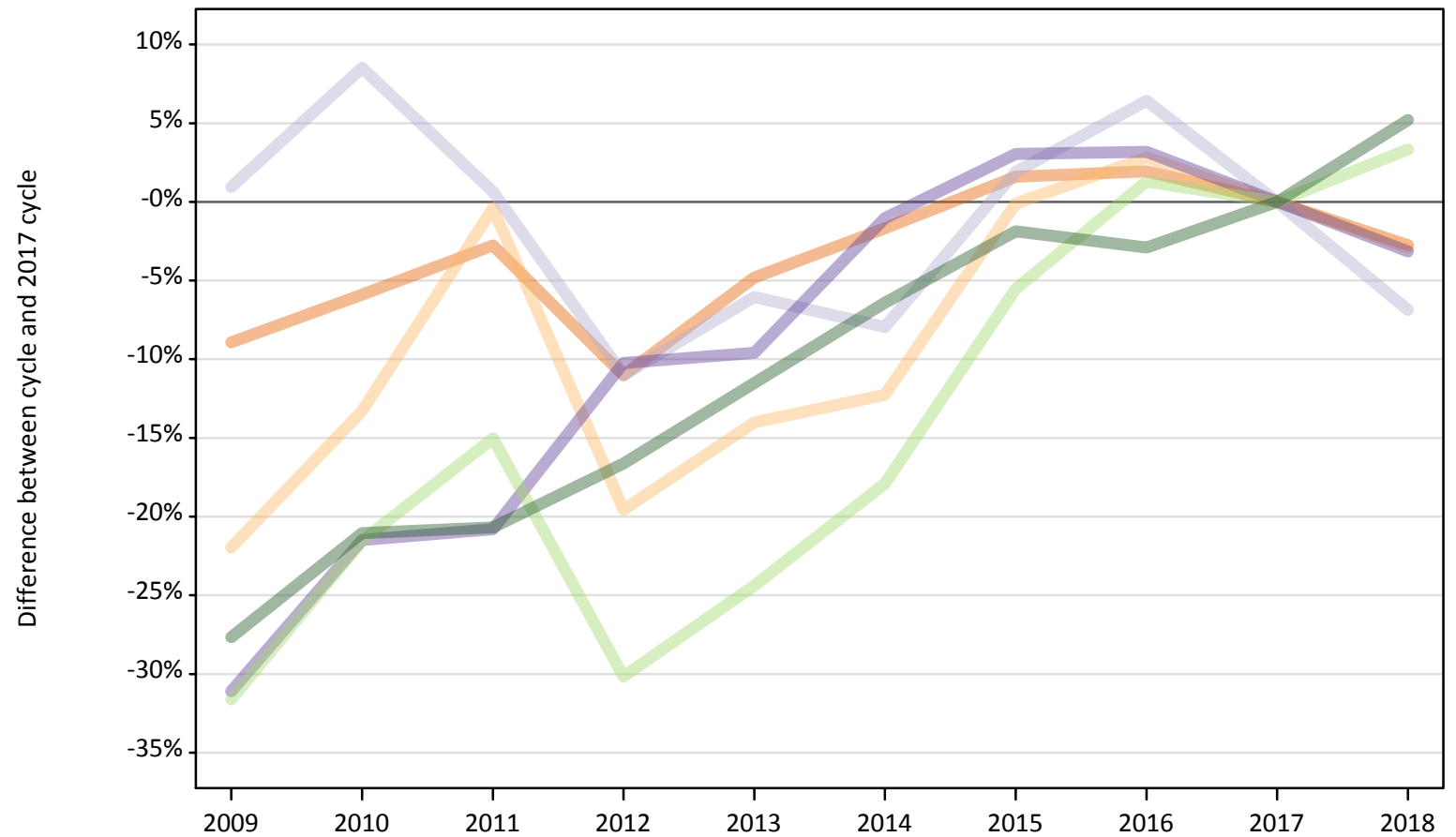
B.3 Placed applicants by country of provider



B.4 Placed applicants at 13 days after A level results day: providers in England

Selected applicant domiciles: difference between cycle and 2017 cycle (at 13 days after A level results day)

- England
- Northern Ireland
- Scotland
- Wales
- EU (excluding UK)
- Not EU



Note: The percentage change is not plotted in the above chart for groups with fewer than 30 placed applicants in any one cycle.

B.5 Placed applicants at 13 days after A level results day: providers in England

Placed applicants by domicile (at 13 days after A level results day)

Domicile of applicant	2009	2010	2011	2012	2013	2014	2015	2016	2017	2018
England	311,640	322,030	332,740	304,460	325,750	336,400	347,660	348,850	342,180	332,760
Northern Ireland	3,040	3,380	3,880	3,130	3,350	3,420	3,890	4,010	3,900	3,780
Scotland	1,590	1,710	1,580	1,400	1,480	1,450	1,600	1,670	1,570	1,470
Wales	5,500	6,270	6,320	7,170	7,220	7,900	8,230	8,240	7,980	7,730
EU (excluding UK)	15,760	18,080	19,580	16,090	17,430	18,920	21,770	23,340	23,040	23,810
Not EU	22,390	24,440	24,540	25,800	27,390	28,970	30,370	30,050	30,950	32,560

B.6 Placed applicants at 13 days after A level results day: providers in England

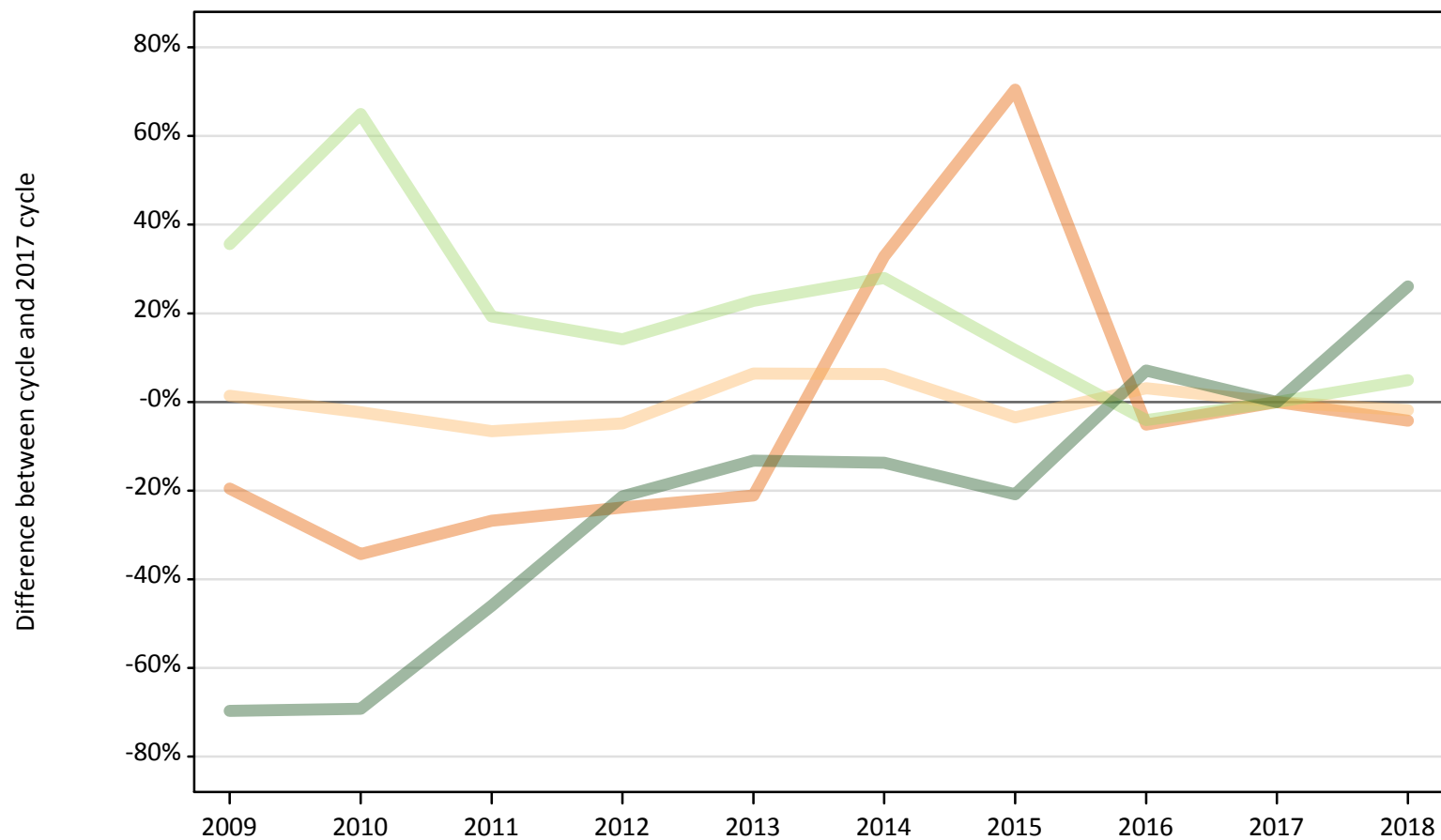
Selected applicant domiciles: difference between cycle and 2017 cycle (at 13 days after A level results day)

Domicile of applicant	2009	2010	2011	2012	2013	2014	2015	2016	2017	2018
England	-9%	-6%	-3%	-11%	-5%	-2%	2%	2%	0%	-3%
Northern Ireland	-22%	-13%	-0%	-20%	-14%	-12%	-0%	3%	0%	-3%
Scotland	1%	9%	1%	-11%	-6%	-8%	2%	6%	0%	-7%
Wales	-31%	-21%	-21%	-10%	-10%	-1%	3%	3%	0%	-3%
EU (excluding UK)	-32%	-22%	-15%	-30%	-24%	-18%	-6%	1%	0%	3%
Not EU	-28%	-21%	-21%	-17%	-11%	-6%	-2%	-3%	0%	5%

Note: The percentage change is not recorded in the above table for groups with fewer than 10 placed applicants in that cycle or in the 2017 cycle.

B.7 Placed applicants at 13 days after A level results day: providers in Northern Ireland
Selected applicant domiciles: difference between cycle and 2017 cycle (at 13 days after A level results day)

- England
- Northern Ireland
- Scotland
- Wales
- EU (excluding UK)
- Not EU



Note: The percentage change is not plotted in the above chart for groups with fewer than 30 placed applicants in any one cycle.

B.8 Placed applicants at 13 days after A level results day: providers in Northern Ireland

Placed applicants by domicile (at 13 days after A level results day)

Domicile of applicant	2009	2010	2011	2012	2013	2014	2015	2016	2017	2018
England	270	220	240	250	260	440	570	320	330	320
Northern Ireland	9,110	8,780	8,390	8,550	9,560	9,550	8,680	9,260	8,990	8,820
Scotland	20	20	20	30	10	20	20	20	30	30
Wales	10	10	10	0	10	10	10	10	10	10
EU (excluding UK)	500	610	440	420	450	470	410	350	370	390
Not EU	60	70	110	170	180	180	170	230	210	270

B.9 Placed applicants at 13 days after A level results day: providers in Northern Ireland

Selected applicant domiciles: difference between cycle and 2017 cycle (at 13 days after A level results day)

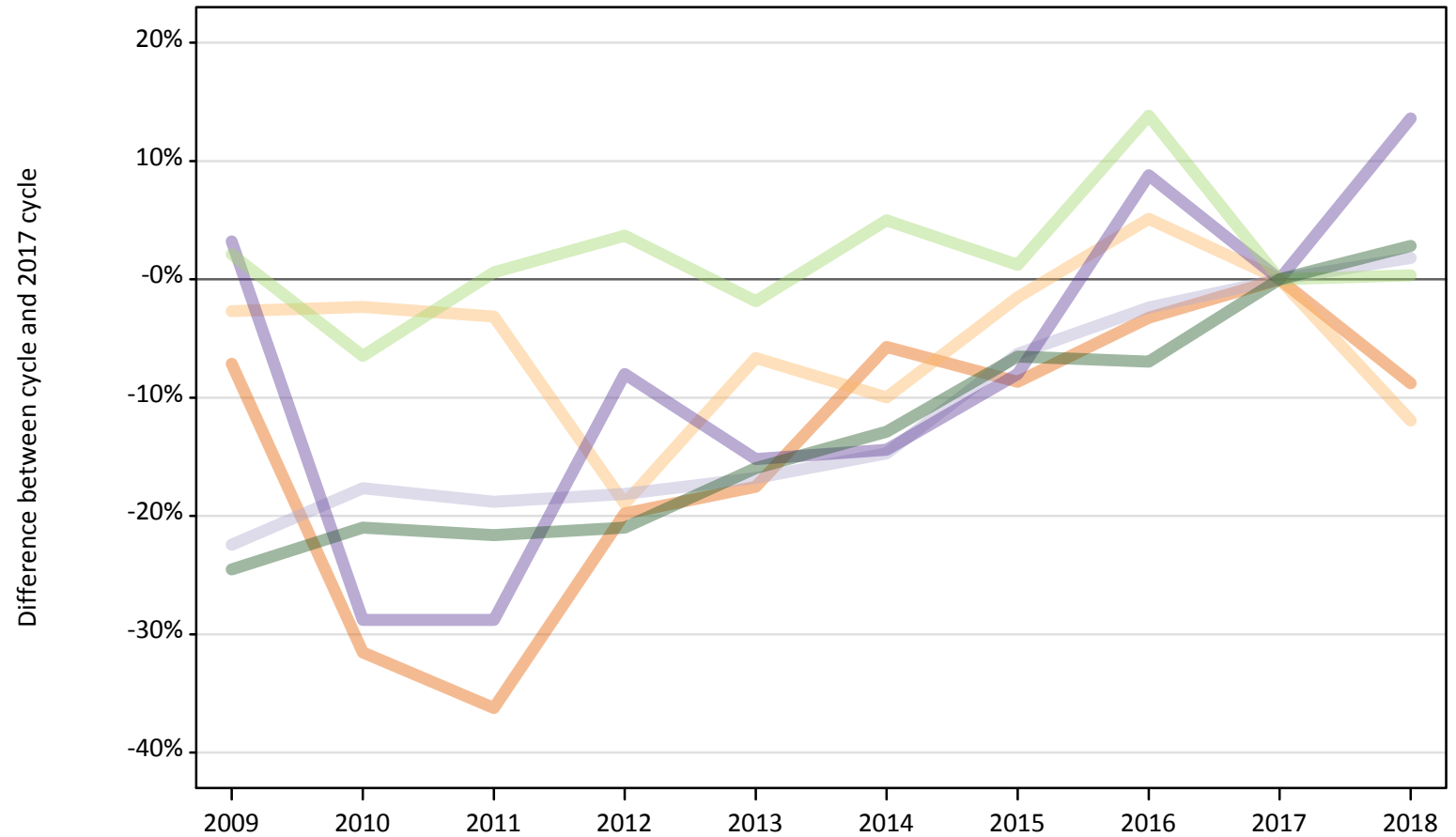
Domicile of applicant	2009	2010	2011	2012	2013	2014	2015	2016	2017	2018
England	-20%	-34%	-27%	-24%	-21%	33%	70%	-5%	0%	-4%
Northern Ireland	1%	-2%	-7%	-5%	6%	6%	-3%	3%	0%	-2%
Scotland	-45%	-26%	-39%	-16%	-58%	-45%	-35%	-42%	0%	-16%
Wales	-14%	-50%	-50%		-64%	-43%	-7%	-21%	0%	-29%
EU (excluding UK)	36%	65%	19%	14%	23%	28%	12%	-4%	0%	5%
Not EU	-70%	-69%	-46%	-21%	-13%	-14%	-21%	7%	0%	26%

Note: The percentage change is not recorded in the above table for groups with fewer than 10 placed applicants in that cycle or in the 2017 cycle.

B.10 Placed applicants at 13 days after A level results day: providers in Scotland

Selected applicant domiciles: difference between cycle and 2017 cycle (at 13 days after A level results day)

- England
- Northern Ireland
- Scotland
- Wales
- EU (excluding UK)
- Not EU



Note: The percentage change is not plotted in the above chart for groups with fewer than 30 placed applicants in any one cycle.

B.11 Placed applicants at 13 days after A level results day: providers in Scotland

Placed applicants by domicile (at 13 days after A level results day)

Domicile of applicant	2009	2010	2011	2012	2013	2014	2015	2016	2017	2018
England	4,670	3,440	3,210	4,030	4,150	4,740	4,590	4,870	5,030	4,590
Northern Ireland	1,080	1,090	1,080	900	1,040	1,000	1,100	1,170	1,110	980
Scotland	25,160	26,710	26,340	26,550	26,990	27,670	30,390	31,660	32,440	33,020
Wales	130	90	90	120	110	110	120	140	130	140
EU (excluding UK)	4,110	3,770	4,050	4,180	3,950	4,230	4,080	4,590	4,030	4,040
Not EU	2,160	2,260	2,240	2,260	2,410	2,490	2,680	2,660	2,860	2,940

B.12 Placed applicants at 13 days after A level results day: providers in Scotland

Selected applicant domiciles: difference between cycle and 2017 cycle (at 13 days after A level results day)

Domicile of applicant	2009	2010	2011	2012	2013	2014	2015	2016	2017	2018
England	-7%	-32%	-36%	-20%	-18%	-6%	-9%	-3%	0%	-9%
Northern Ireland	-3%	-2%	-3%	-19%	-7%	-10%	-2%	5%	0%	-12%
Scotland	-22%	-18%	-19%	-18%	-17%	-15%	-6%	-2%	0%	2%
Wales	3%	-29%	-29%	-8%	-15%	-14%	-8%	9%	0%	14%
EU (excluding UK)	2%	-6%	1%	4%	-2%	5%	1%	14%	0%	0%
Not EU	-25%	-21%	-22%	-21%	-16%	-13%	-7%	-7%	0%	3%

Note: The percentage change is not recorded in the above table for groups with fewer than 10 placed applicants in that cycle or in the 2017 cycle.

B.13 Placed applicants at 13 days after A level results day: providers in Wales

Selected applicant domiciles: difference between cycle and 2017 cycle (at 13 days after A level results day)

- England
- Northern Ireland
- Scotland
- Wales
- EU (excluding UK)
- Not EU



Note: The percentage change is not plotted in the above chart for groups with fewer than 30 placed applicants in any one cycle.

B.14 Placed applicants at 13 days after A level results day: providers in Wales

Placed applicants by domicile (at 13 days after A level results day)

Domicile of applicant	2009	2010	2011	2012	2013	2014	2015	2016	2017	2018
England	9,290	10,070	11,100	9,290	10,210	10,490	10,330	10,660	10,390	9,830
Northern Ireland	110	160	200	140	160	150	170	190	170	140
Scotland	50	50	70	50	60	60	50	50	50	40
Wales	12,560	10,920	10,700	10,430	10,550	10,640	10,770	10,860	10,650	10,460
EU (excluding UK)	860	850	850	870	930	1,000	1,200	1,330	1,410	1,100
Not EU	850	810	980	1,030	1,160	1,230	1,140	1,110	1,070	1,000

B.15 Placed applicants at 13 days after A level results day: providers in Wales

Selected applicant domiciles: difference between cycle and 2017 cycle (at 13 days after A level results day)

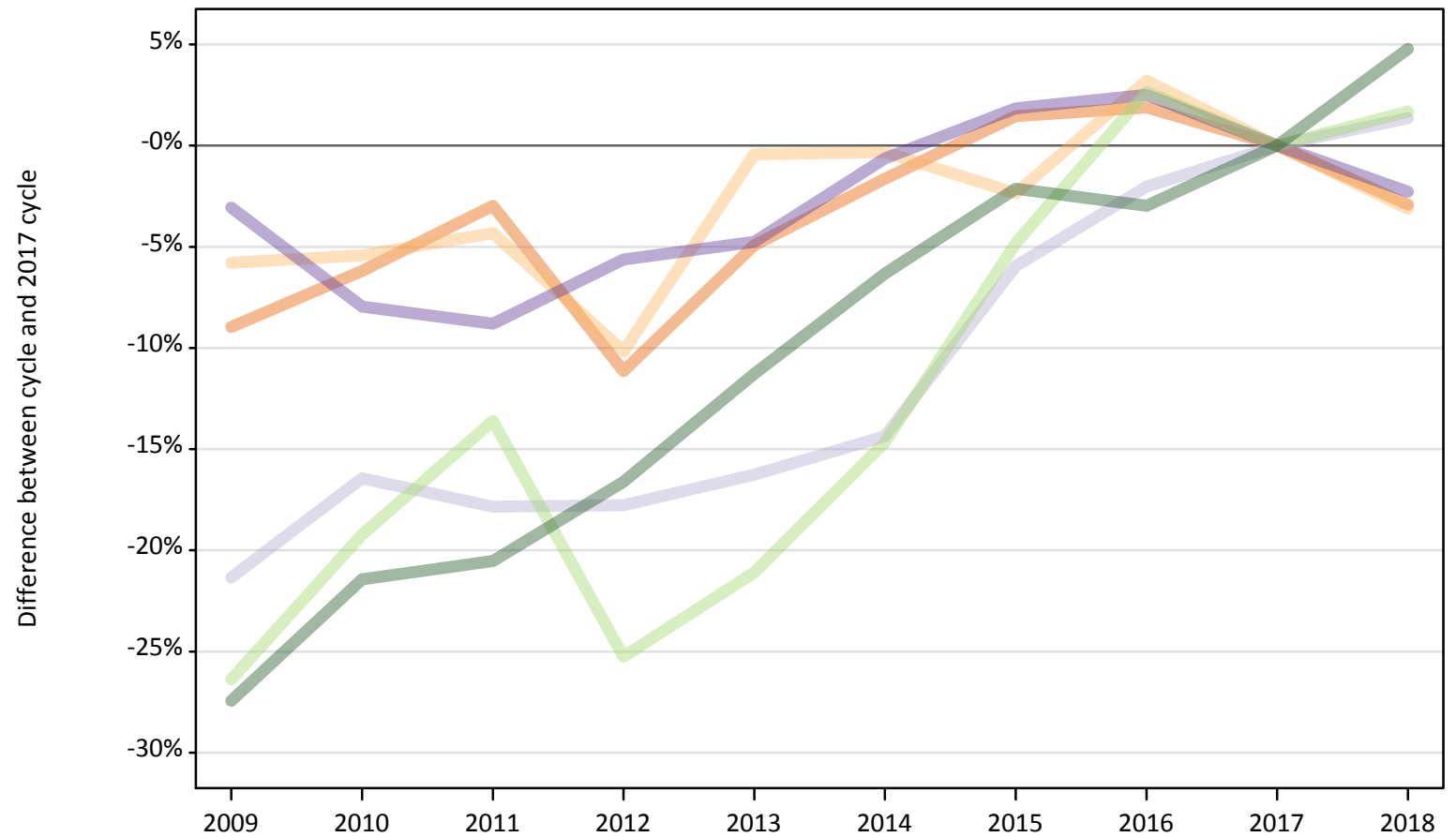
Domicile of applicant	2009	2010	2011	2012	2013	2014	2015	2016	2017	2018
England	-11%	-3%	7%	-11%	-2%	1%	-1%	3%	0%	-5%
Northern Ireland	-34%	-7%	18%	-20%	-8%	-13%	0%	8%	0%	-17%
Scotland	-4%	4%	40%	6%	33%	29%	-2%	-6%	0%	-13%
Wales	18%	3%	0%	-2%	-1%	-0%	1%	2%	0%	-2%
EU (excluding UK)	-39%	-40%	-39%	-38%	-34%	-29%	-15%	-5%	0%	-22%
Not EU	-20%	-25%	-8%	-3%	8%	15%	6%	4%	0%	-6%

Note: The percentage change is not recorded in the above table for groups with fewer than 10 placed applicants in that cycle or in the 2017 cycle.

B.16 Placed applicants at 13 days after A level results day: providers in the UK

Selected applicant domiciles: difference between cycle and 2017 cycle (at 13 days after A level results day)

- England
- Northern Ireland
- Scotland
- Wales
- EU (excluding UK)
- Not EU



Note: The percentage change is not plotted in the above chart for groups with fewer than 30 placed applicants in any one cycle.

B.17 Placed applicants at 13 days after A level results day: providers in the UK

Placed applicants by domicile (at 13 days after A level results day)

Domicile of applicant	2009	2010	2011	2012	2013	2014	2015	2016	2017	2018
England	325,860	335,760	347,290	318,030	340,360	352,080	363,150	364,680	357,940	347,500
Northern Ireland	13,350	13,400	13,550	12,730	14,110	14,120	13,840	14,620	14,170	13,720
Scotland	26,810	28,490	28,000	28,030	28,550	29,190	32,060	33,400	34,090	34,550
Wales	18,200	17,280	17,120	17,720	17,880	18,660	19,120	19,250	18,770	18,350
EU (excluding UK)	21,240	23,300	24,920	21,560	22,760	24,610	27,450	29,610	28,850	29,330
Not EU	25,460	27,570	27,880	29,260	31,130	32,870	34,340	34,050	35,090	36,760

B.18 Placed applicants at 13 days after A level results day: providers in the UK

Selected applicant domiciles: difference between cycle and 2017 cycle (at 13 days after A level results day)

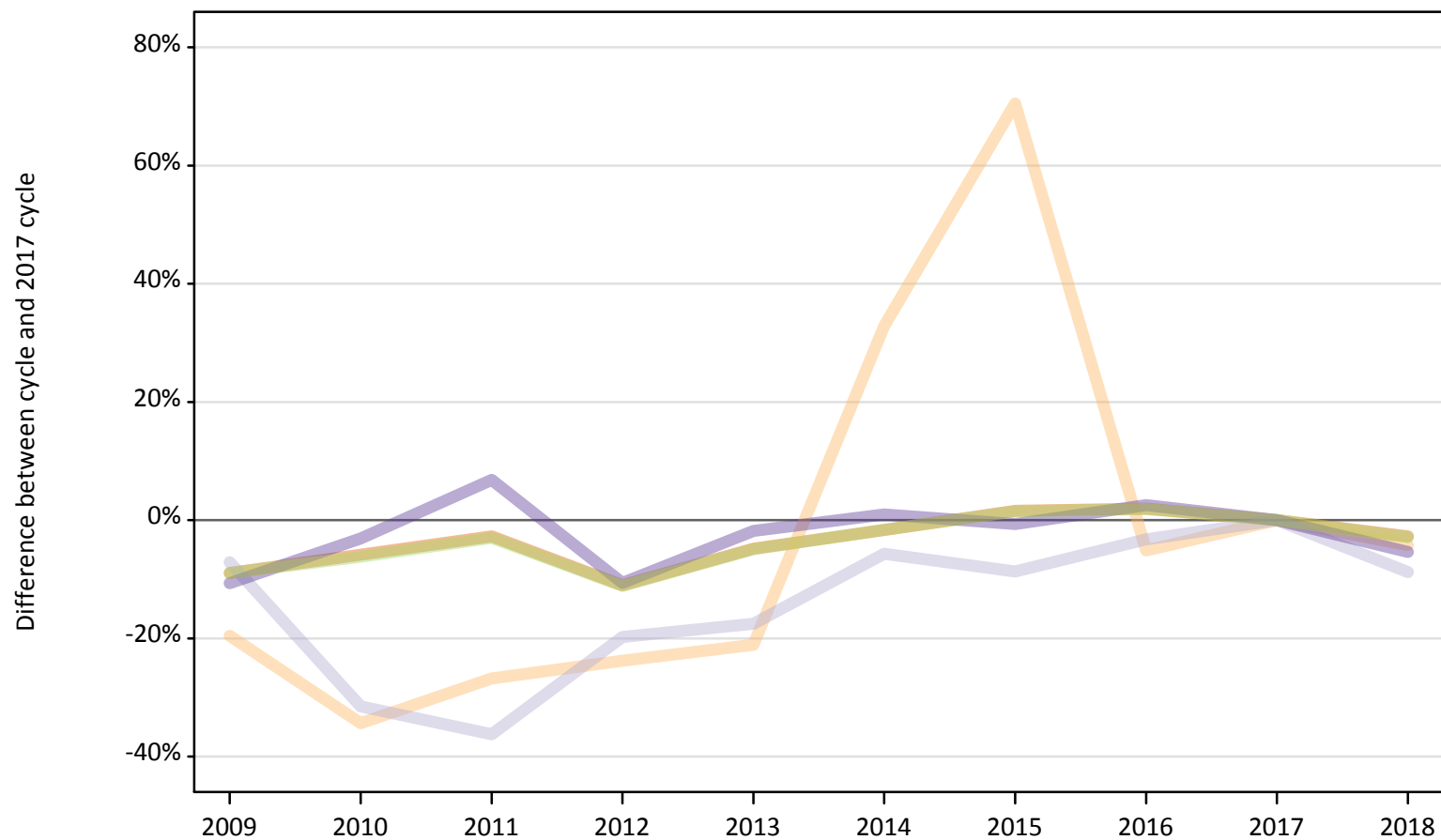
Domicile of applicant	2009	2010	2011	2012	2013	2014	2015	2016	2017	2018
England	-9%	-6%	-3%	-11%	-5%	-2%	1%	2%	0%	-3%
Northern Ireland	-6%	-5%	-4%	-10%	-0%	-0%	-2%	3%	0%	-3%
Scotland	-21%	-16%	-18%	-18%	-16%	-14%	-6%	-2%	0%	1%
Wales	-3%	-8%	-9%	-6%	-5%	-1%	2%	3%	0%	-2%
EU (excluding UK)	-26%	-19%	-14%	-25%	-21%	-15%	-5%	3%	0%	2%
Not EU	-27%	-21%	-21%	-17%	-11%	-6%	-2%	-3%	0%	5%

Note: The percentage change is not recorded in the above table for groups with fewer than 10 placed applicants in that cycle or in the 2017 cycle.

B.19 Placed applicants at 13 days after A level results day: domiciled in England

Selected provider countries: difference between cycle and 2017 cycle (at 13 days after A level results day)

- England
- Northern Ireland
- Scotland
- Wales
- UK



Note: The percentage change is not plotted in the above chart for groups with fewer than 30 placed applicants in any one cycle.

B.20 Placed applicants at 13 days after A level results day: domiciled in England

Placed applicants by provider country (at 13 days after A level results day)

Country of provider	2009	2010	2011	2012	2013	2014	2015	2016	2017	2018
England	311,640	322,030	332,740	304,460	325,750	336,400	347,660	348,850	342,180	332,760
Northern Ireland	270	220	240	250	260	440	570	320	330	320
Scotland	4,670	3,440	3,210	4,030	4,150	4,740	4,590	4,870	5,030	4,590
Wales	9,290	10,070	11,100	9,290	10,210	10,490	10,330	10,660	10,390	9,830
UK	325,860	335,760	347,290	318,030	340,360	352,080	363,150	364,680	357,940	347,500

B.21 Placed applicants at 13 days after A level results day: domiciled in England

Selected provider countries: difference between cycle and 2017 cycle (at 13 days after A level results day)

Country of provider	2009	2010	2011	2012	2013	2014	2015	2016	2017	2018
England	-9%	-6%	-3%	-11%	-5%	-2%	2%	2%	0%	-3%
Northern Ireland	-20%	-34%	-27%	-24%	-21%	33%	70%	-5%	0%	-4%
Scotland	-7%	-32%	-36%	-20%	-18%	-6%	-9%	-3%	0%	-9%
Wales	-11%	-3%	7%	-11%	-2%	1%	-1%	3%	0%	-5%
UK	-9%	-6%	-3%	-11%	-5%	-2%	1%	2%	0%	-3%

Note: The percentage change is not recorded in the above table for groups with fewer than 10 placed applicants in that cycle or in the 2017 cycle.

B.22 Placed applicants at 13 days after A level results day: domiciled in Northern Ireland
Selected provider countries: difference between cycle and 2017 cycle (at 13 days after A level results day)

- England
- Northern Ireland
- Scotland
- Wales
- UK



Note: The percentage change is not plotted in the above chart for groups with fewer than 30 placed applicants in any one cycle.

B.23 Placed applicants at 13 days after A level results day: domiciled in Northern Ireland

Placed applicants by provider country (at 13 days after A level results day)

Country of provider	2009	2010	2011	2012	2013	2014	2015	2016	2017	2018
England	3,040	3,380	3,880	3,130	3,350	3,420	3,890	4,010	3,900	3,780
Northern Ireland	9,110	8,780	8,390	8,550	9,560	9,550	8,680	9,260	8,990	8,820
Scotland	1,080	1,090	1,080	900	1,040	1,000	1,100	1,170	1,110	980
Wales	110	160	200	140	160	150	170	190	170	140
UK	13,350	13,400	13,550	12,730	14,110	14,120	13,840	14,620	14,170	13,720

B.24 Placed applicants at 13 days after A level results day: domiciled in Northern Ireland

Selected provider countries: difference between cycle and 2017 cycle (at 13 days after A level results day)

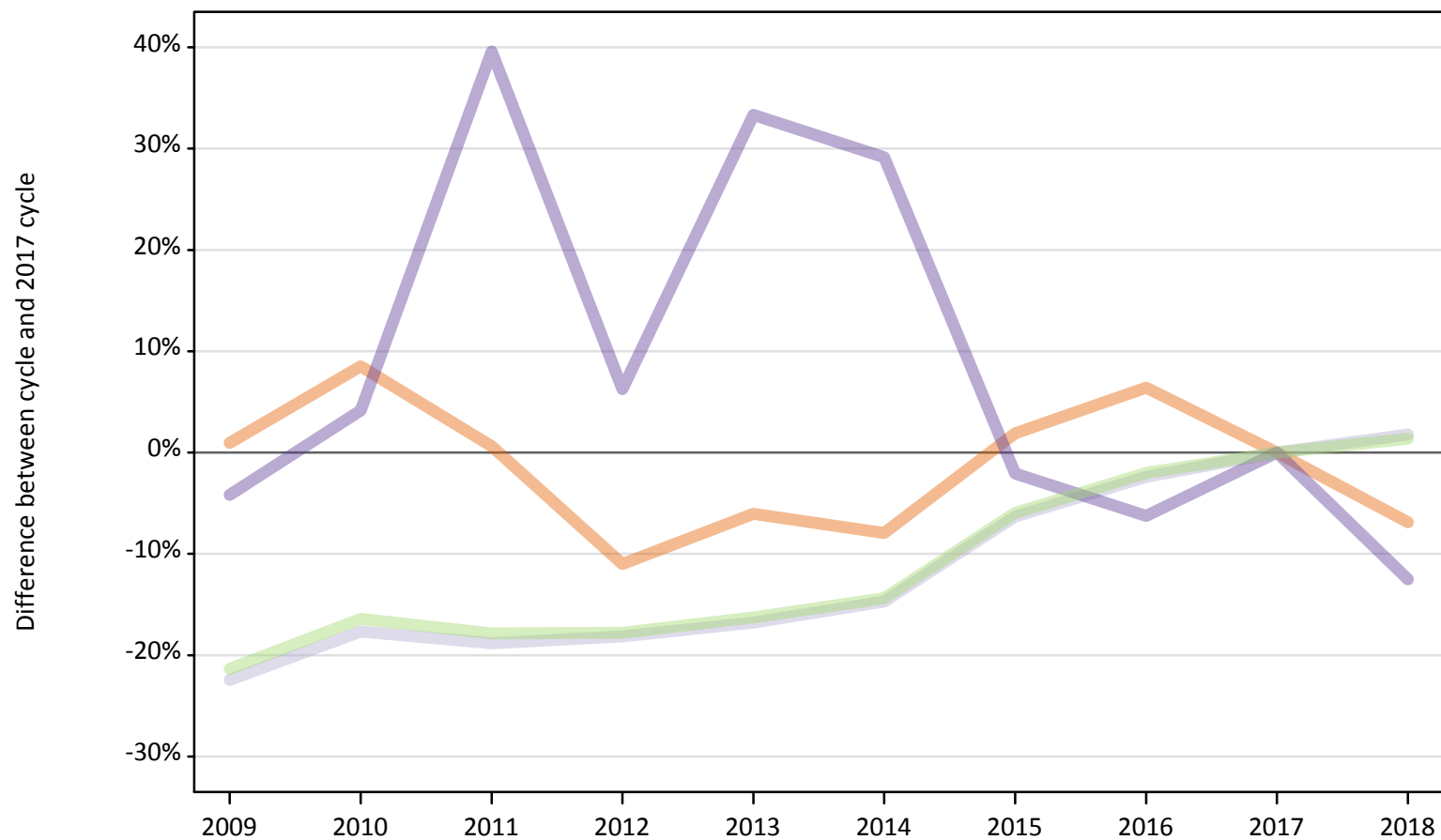
Country of provider	2009	2010	2011	2012	2013	2014	2015	2016	2017	2018
England	-22%	-13%	-0%	-20%	-14%	-12%	-0%	3%	0%	-3%
Northern Ireland	1%	-2%	-7%	-5%	6%	6%	-3%	3%	0%	-2%
Scotland	-3%	-2%	-3%	-19%	-7%	-10%	-2%	5%	0%	-12%
Wales	-34%	-7%	18%	-20%	-8%	-13%	0%	8%	0%	-17%
UK	-6%	-5%	-4%	-10%	-0%	-0%	-2%	3%	0%	-3%

Note: The percentage change is not recorded in the above table for groups with fewer than 10 placed applicants in that cycle or in the 2017 cycle.

B.25 Placed applicants at 13 days after A level results day: domiciled in Scotland

Selected provider countries: difference between cycle and 2017 cycle (at 13 days after A level results day)

- England
- Northern Ireland
- Scotland
- Wales
- UK



Note: The percentage change is not plotted in the above chart for groups with fewer than 30 placed applicants in any one cycle.

B.26 Placed applicants at 13 days after A level results day: domiciled in Scotland

Placed applicants by provider country (at 13 days after A level results day)

Country of provider	2009	2010	2011	2012	2013	2014	2015	2016	2017	2018
England	1,590	1,710	1,580	1,400	1,480	1,450	1,600	1,670	1,570	1,470
Northern Ireland	20	20	20	30	10	20	20	20	30	30
Scotland	25,160	26,710	26,340	26,550	26,990	27,670	30,390	31,660	32,440	33,020
Wales	50	50	70	50	60	60	50	50	50	40
UK	26,810	28,490	28,000	28,030	28,550	29,190	32,060	33,400	34,090	34,550

B.27 Placed applicants at 13 days after A level results day: domiciled in Scotland

Selected provider countries: difference between cycle and 2017 cycle (at 13 days after A level results day)

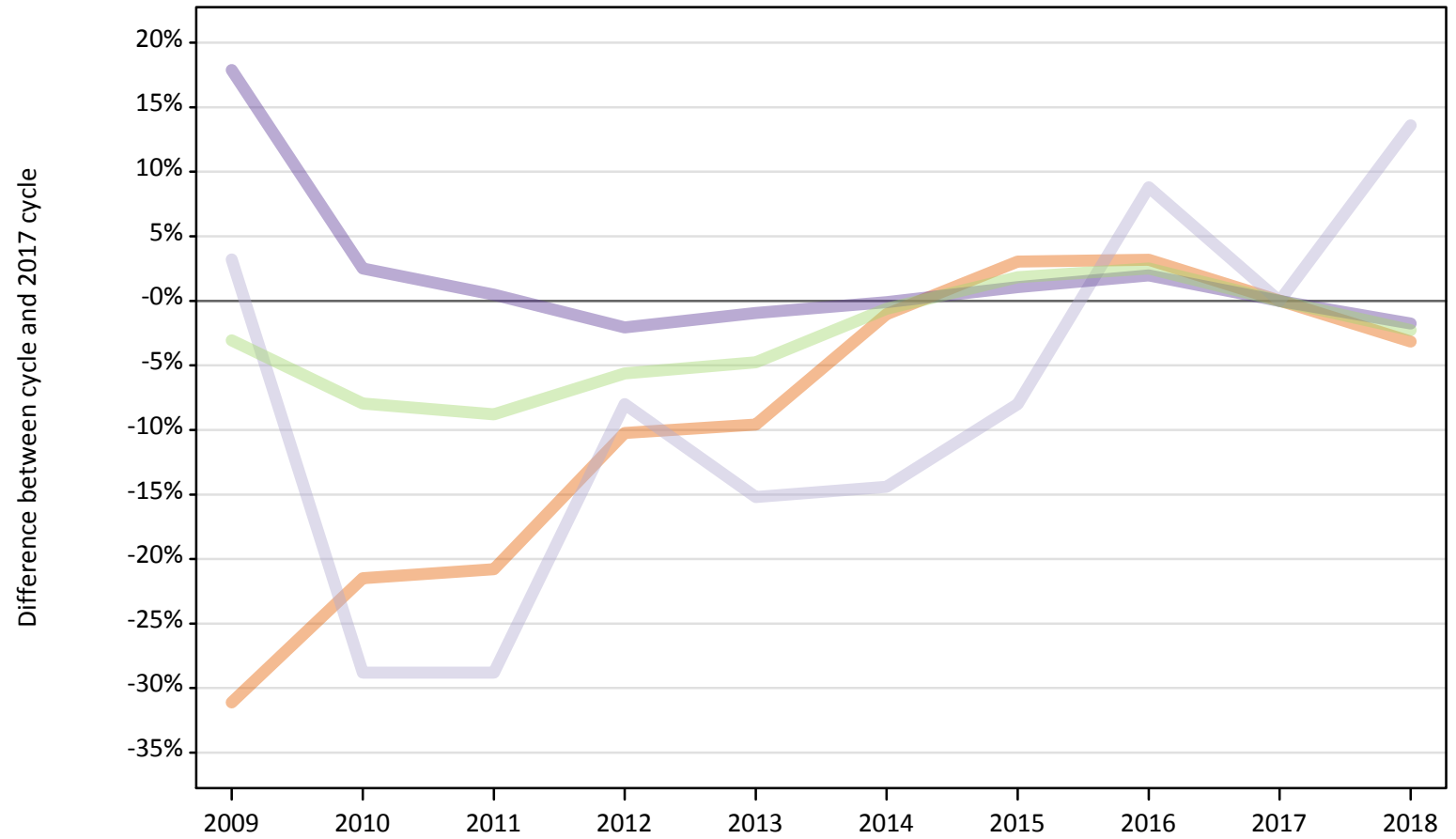
Country of provider	2009	2010	2011	2012	2013	2014	2015	2016	2017	2018
England	1%	9%	1%	-11%	-6%	-8%	2%	6%	0%	-7%
Northern Ireland	-45%	-26%	-39%	-16%	-58%	-45%	-35%	-42%	0%	-16%
Scotland	-22%	-18%	-19%	-18%	-17%	-15%	-6%	-2%	0%	2%
Wales	-4%	4%	40%	6%	33%	29%	-2%	-6%	0%	-13%
UK	-21%	-16%	-18%	-18%	-16%	-14%	-6%	-2%	0%	1%

Note: The percentage change is not recorded in the above table for groups with fewer than 10 placed applicants in that cycle or in the 2017 cycle.

B.28 Placed applicants at 13 days after A level results day: domiciled in Wales

Selected provider countries: difference between cycle and 2017 cycle (at 13 days after A level results day)

- England
- Northern Ireland
- Scotland
- Wales
- UK



Note: The percentage change is not plotted in the above chart for groups with fewer than 30 placed applicants in any one cycle.

B.29 Placed applicants at 13 days after A level results day: domiciled in Wales

Placed applicants by provider country (at 13 days after A level results day)

Country of provider	2009	2010	2011	2012	2013	2014	2015	2016	2017	2018
England	5,500	6,270	6,320	7,170	7,220	7,900	8,230	8,240	7,980	7,730
Northern Ireland	10	10	10	0	10	10	10	10	10	10
Scotland	130	90	90	120	110	110	120	140	130	140
Wales	12,560	10,920	10,700	10,430	10,550	10,640	10,770	10,860	10,650	10,460
UK	18,200	17,280	17,120	17,720	17,880	18,660	19,120	19,250	18,770	18,350

B.30 Placed applicants at 13 days after A level results day: domiciled in Wales

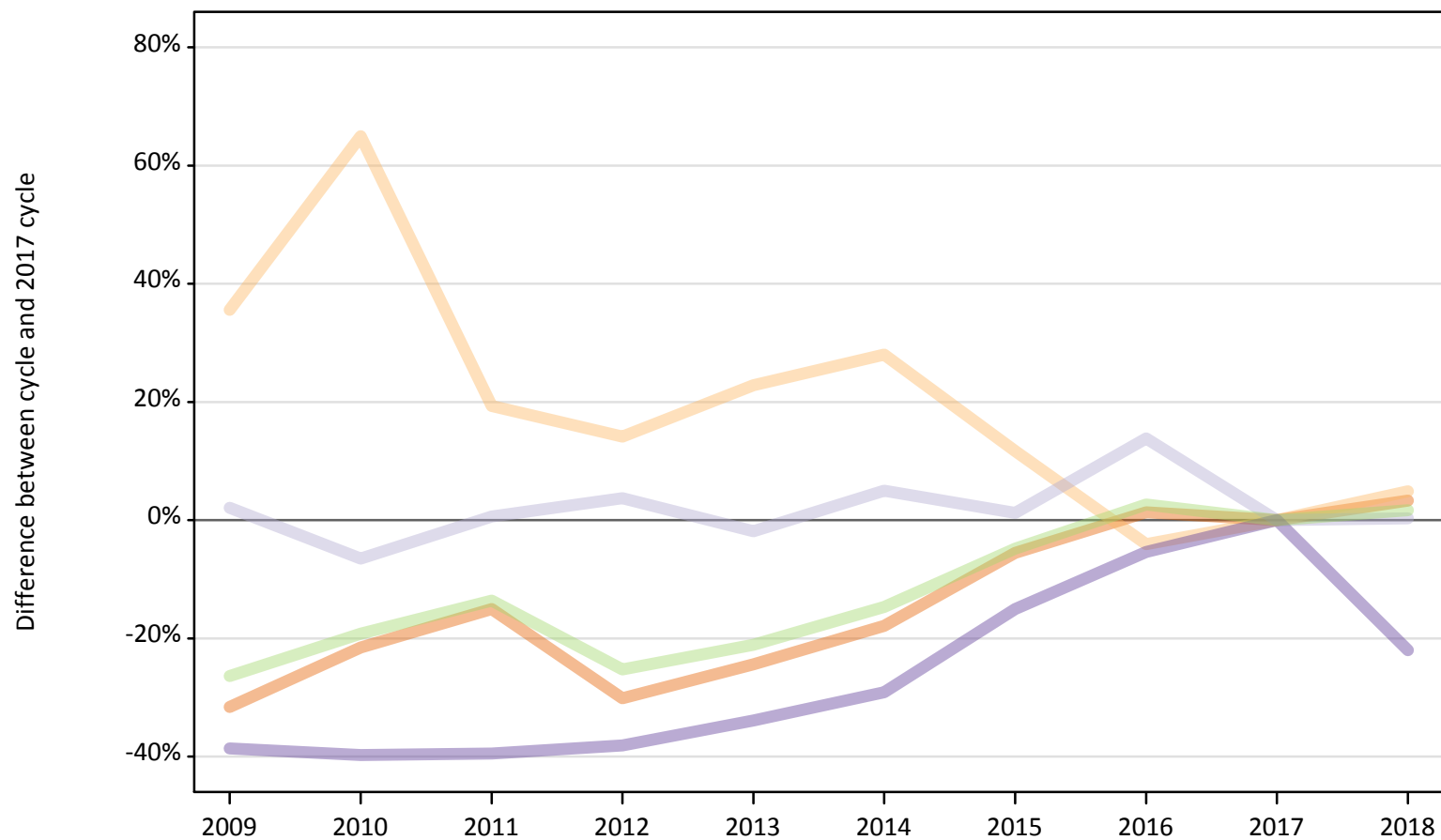
Selected provider countries: difference between cycle and 2017 cycle (at 13 days after A level results day)

Country of provider	2009	2010	2011	2012	2013	2014	2015	2016	2017	2018
England	-31%	-21%	-21%	-10%	-10%	-1%	3%	3%	0%	-3%
Northern Ireland	-14%	-50%	-50%		-64%	-43%	-7%	-21%	0%	-29%
Scotland	3%	-29%	-29%	-8%	-15%	-14%	-8%	9%	0%	14%
Wales	18%	3%	0%	-2%	-1%	-0%	1%	2%	0%	-2%
UK	-3%	-8%	-9%	-6%	-5%	-1%	2%	3%	0%	-2%

Note: The percentage change is not recorded in the above table for groups with fewer than 10 placed applicants in that cycle or in the 2017 cycle.

B.31 Placed applicants at 13 days after A level results day: domiciled in EU (excluding UK)
Selected provider countries: difference between cycle and 2017 cycle (at 13 days after A level results day)

- England
- Northern Ireland
- Scotland
- Wales
- UK



Note: The percentage change is not plotted in the above chart for groups with fewer than 30 placed applicants in any one cycle.

B.32 Placed applicants at 13 days after A level results day: domiciled in EU (excluding UK)

Placed applicants by provider country (at 13 days after A level results day)

Country of provider	2009	2010	2011	2012	2013	2014	2015	2016	2017	2018
England	15,760	18,080	19,580	16,090	17,430	18,920	21,770	23,340	23,040	23,810
Northern Ireland	500	610	440	420	450	470	410	350	370	390
Scotland	4,110	3,770	4,050	4,180	3,950	4,230	4,080	4,590	4,030	4,040
Wales	860	850	850	870	930	1,000	1,200	1,330	1,410	1,100
UK	21,240	23,300	24,920	21,560	22,760	24,610	27,450	29,610	28,850	29,330

B.33 Placed applicants at 13 days after A level results day: domiciled in EU (excluding UK)

Selected provider countries: difference between cycle and 2017 cycle (at 13 days after A level results day)

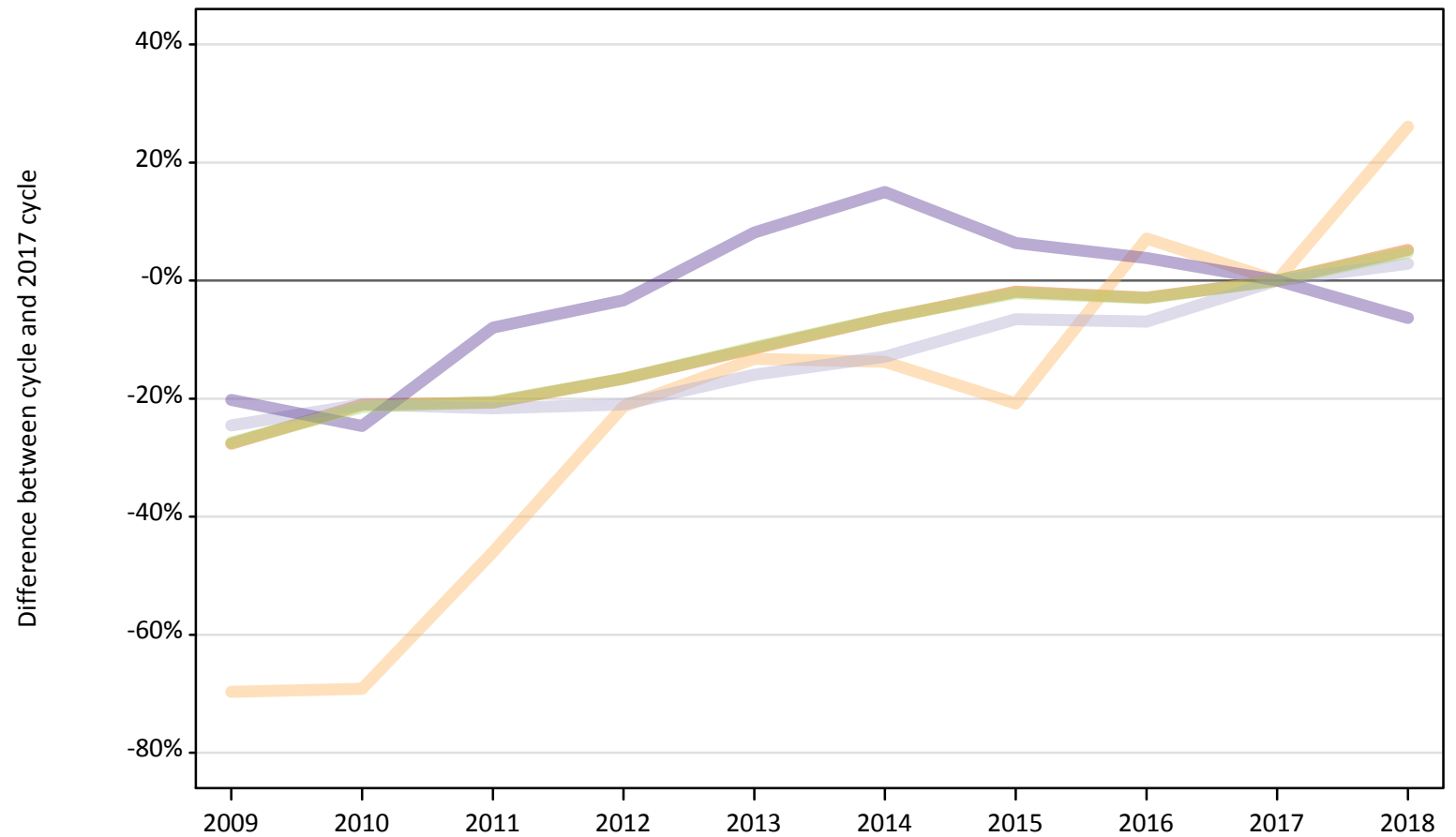
Country of provider	2009	2010	2011	2012	2013	2014	2015	2016	2017	2018
England	-32%	-22%	-15%	-30%	-24%	-18%	-6%	1%	0%	3%
Northern Ireland	36%	65%	19%	14%	23%	28%	12%	-4%	0%	5%
Scotland	2%	-6%	1%	4%	-2%	5%	1%	14%	0%	0%
Wales	-39%	-40%	-39%	-38%	-34%	-29%	-15%	-5%	0%	-22%
UK	-26%	-19%	-14%	-25%	-21%	-15%	-5%	3%	0%	2%

Note: The percentage change is not recorded in the above table for groups with fewer than 10 placed applicants in that cycle or in the 2017 cycle.

B.34 Placed applicants at 13 days after A level results day: domiciled in Not EU

Selected provider countries: difference between cycle and 2017 cycle (at 13 days after A level results day)

- England
- Northern Ireland
- Scotland
- Wales
- UK



Note: The percentage change is not plotted in the above chart for groups with fewer than 30 placed applicants in any one cycle.

B.35 Placed applicants at 13 days after A level results day: domiciled in Not EU

Placed applicants by provider country (at 13 days after A level results day)

Country of provider	2009	2010	2011	2012	2013	2014	2015	2016	2017	2018
England	22,390	24,440	24,540	25,800	27,390	28,970	30,370	30,050	30,950	32,560
Northern Ireland	60	70	110	170	180	180	170	230	210	270
Scotland	2,160	2,260	2,240	2,260	2,410	2,490	2,680	2,660	2,860	2,940
Wales	850	810	980	1,030	1,160	1,230	1,140	1,110	1,070	1,000
UK	25,460	27,570	27,880	29,260	31,130	32,870	34,340	34,050	35,090	36,760

B.36 Placed applicants at 13 days after A level results day: domiciled in Not EU

Selected provider countries: difference between cycle and 2017 cycle (at 13 days after A level results day)

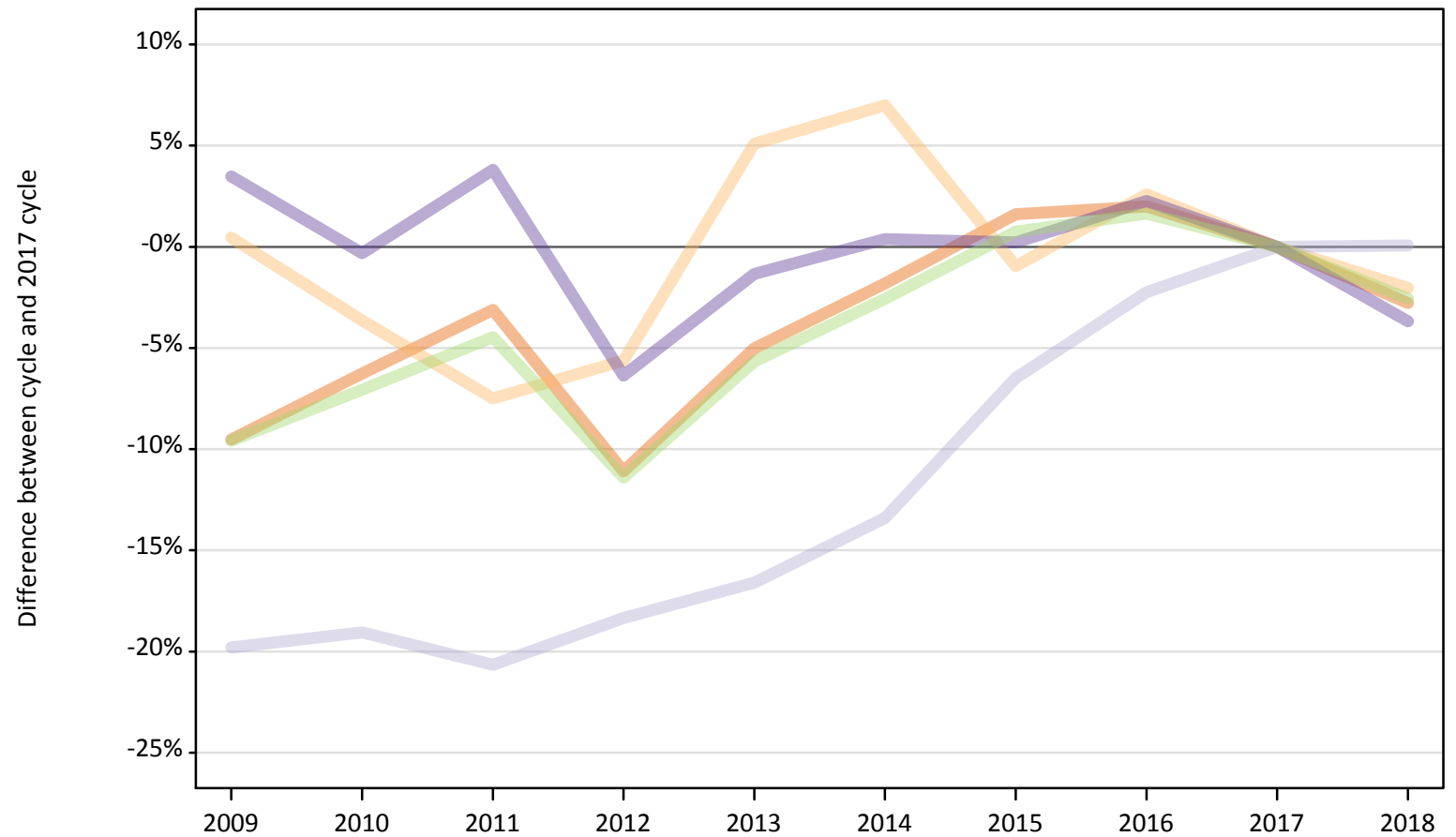
Country of provider	2009	2010	2011	2012	2013	2014	2015	2016	2017	2018
England	-28%	-21%	-21%	-17%	-11%	-6%	-2%	-3%	0%	5%
Northern Ireland	-70%	-69%	-46%	-21%	-13%	-14%	-21%	7%	0%	26%
Scotland	-25%	-21%	-22%	-21%	-16%	-13%	-7%	-7%	0%	3%
Wales	-20%	-25%	-8%	-3%	8%	15%	6%	4%	0%	-6%
UK	-27%	-21%	-21%	-17%	-11%	-6%	-2%	-3%	0%	5%

Note: The percentage change is not recorded in the above table for groups with fewer than 10 placed applicants in that cycle or in the 2017 cycle.

B.37 Placed applicants at 13 days after A level results day: domiciled in UK

Selected provider countries: difference between cycle and 2017 cycle (at 13 days after A level results day)

- England
- Northern Ireland
- Scotland
- Wales
- UK



Note: The percentage change is not plotted in the above chart for groups with fewer than 30 placed applicants in any one cycle.

B.38 Placed applicants at 13 days after A level results day: domiciled in UK

Placed applicants by provider country (at 13 days after A level results day)

Country of provider	2009	2010	2011	2012	2013	2014	2015	2016	2017	2018
England	321,770	333,390	344,530	316,160	337,800	349,170	361,380	362,760	355,640	345,740
Northern Ireland	9,410	9,020	8,660	8,840	9,840	10,020	9,270	9,610	9,360	9,170
Scotland	31,040	31,330	30,710	31,600	32,280	33,520	36,190	37,830	38,700	38,730
Wales	22,000	21,200	22,070	19,910	20,980	21,350	21,310	21,750	21,260	20,480
UK	384,220	394,930	405,970	376,510	400,900	414,050	428,160	431,950	424,970	414,120

B.39 Placed applicants at 13 days after A level results day: domiciled in UK

Selected provider countries: difference between cycle and 2017 cycle (at 13 days after A level results day)

Country of provider	2009	2010	2011	2012	2013	2014	2015	2016	2017	2018
England	-10%	-6%	-3%	-11%	-5%	-2%	2%	2%	0%	-3%
Northern Ireland	0%	-4%	-7%	-6%	5%	7%	-1%	3%	0%	-2%
Scotland	-20%	-19%	-21%	-18%	-17%	-13%	-6%	-2%	0%	0%
Wales	3%	-0%	4%	-6%	-1%	0%	0%	2%	0%	-4%
UK	-10%	-7%	-4%	-11%	-6%	-3%	1%	2%	0%	-3%

Note: The percentage change is not recorded in the above table for groups with fewer than 10 placed applicants in that cycle or in the 2017 cycle.