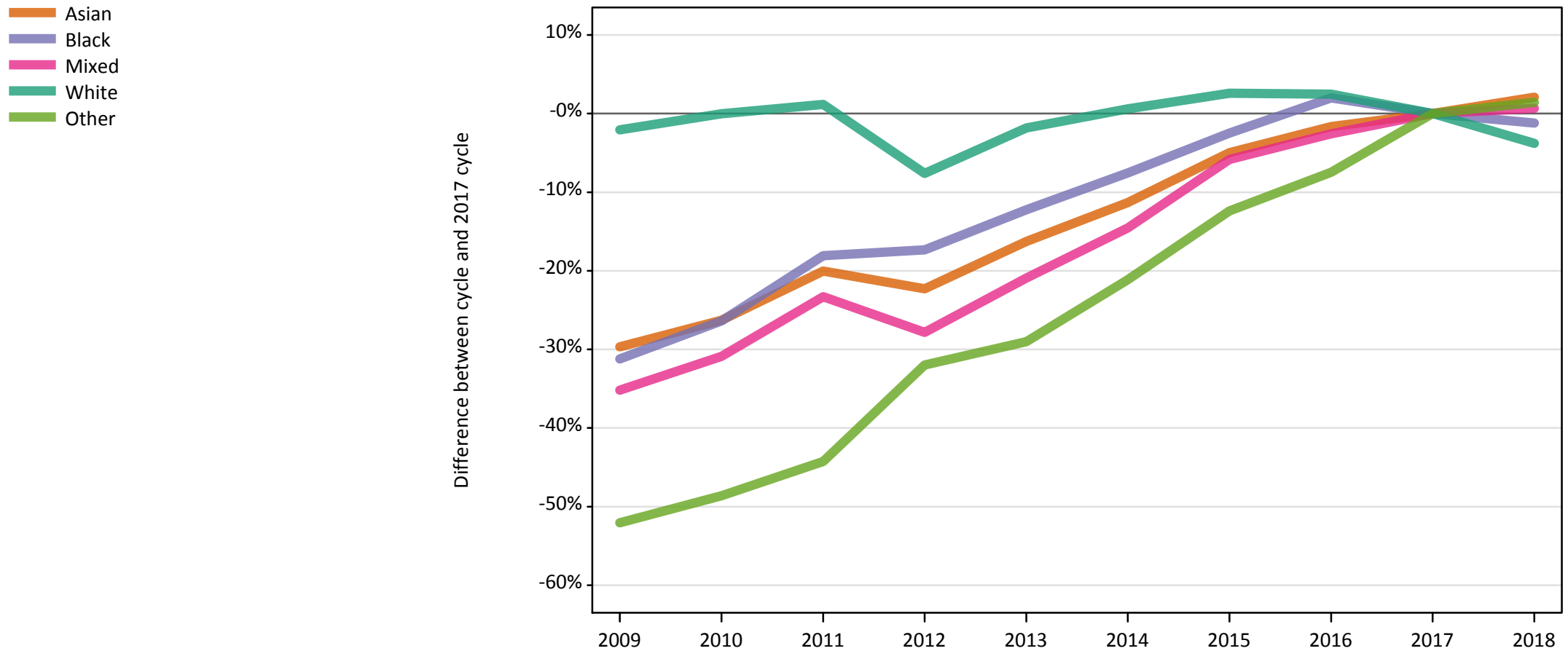


Daily Clearing Analysis: Ethnicity

Analysis at 00:05 on Tuesday 28 August 2018 (12 days after A level results day)

E.1 Placed applicants from UK by ethnic group: 12 days after A level results day

Placed applicants: change relative to 2017 cycle totals



Note: The percentage change is not plotted in the above chart for groups with fewer than 30 placed applicants in any one cycle.

E.2 Placed applicants from UK by ethnic group: 12 days after A level results day

Applicant Status	Ethnic group	2009	2010	2011	2012	2013	2014	2015	2016	2017	2018
Placed	Asian	34,890	36,570	39,670	38,540	41,530	43,990	47,140	48,780	49,600	50,640
	Black	20,510	21,960	24,430	24,650	26,170	27,570	29,090	30,420	29,820	29,460
	Mixed	12,130	12,940	14,360	13,510	14,800	15,990	17,620	18,230	18,720	18,840
	White	307,810	314,290	317,950	290,410	308,600	316,240	322,450	322,100	314,290	302,450
	Other	3,450	3,700	4,020	4,900	5,110	5,680	6,310	6,670	7,200	7,310

E.3 Placed applicants from UK by ethnic group: 12 days after A level results day

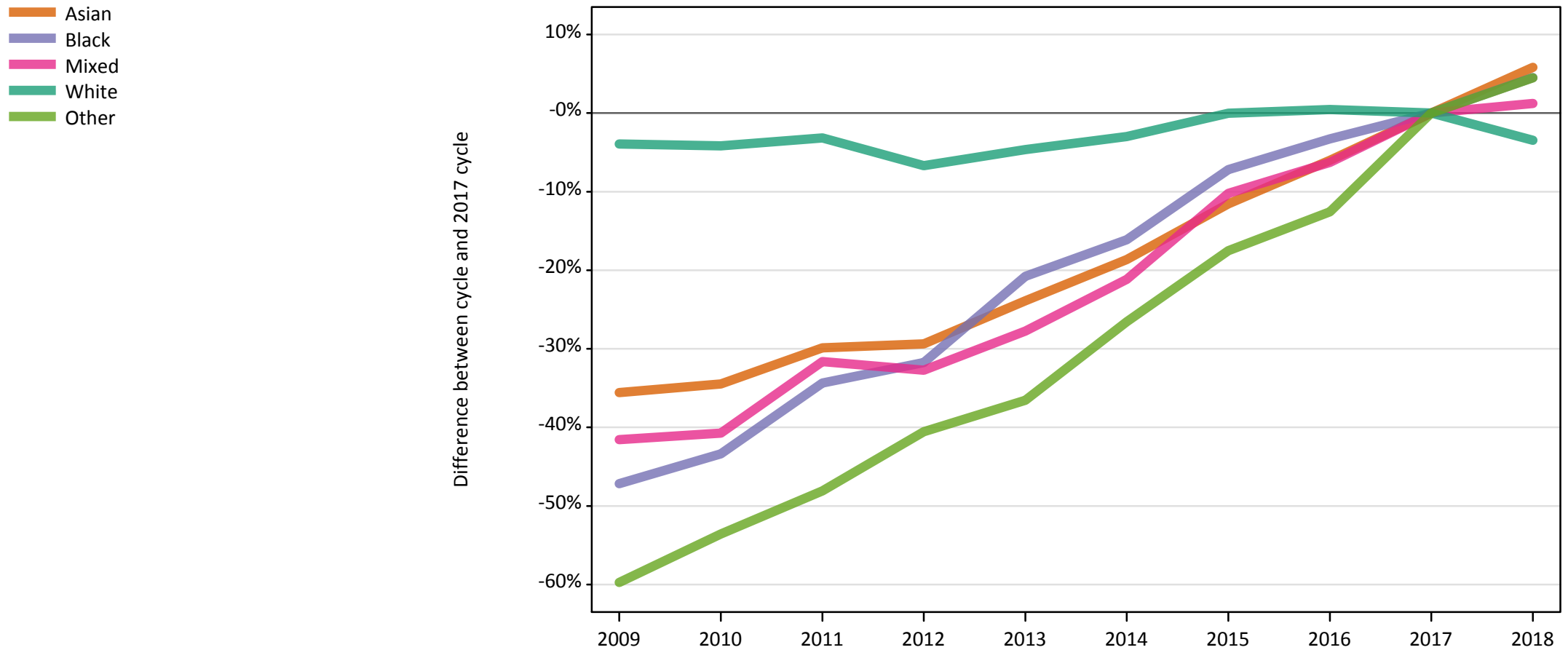
Placed applicants: change relative to 2017 cycle totals

Applicant Status	Ethnic group	2009	2010	2011	2012	2013	2014	2015	2016	2017	2018
Placed	Asian	-30%	-26%	-20%	-22%	-16%	-11%	-5%	-2%	0%	2%
	Black	-31%	-26%	-18%	-17%	-12%	-8%	-2%	2%	0%	-1%
	Mixed	-35%	-31%	-23%	-28%	-21%	-15%	-6%	-3%	0%	1%
	White	-2%	-0%	1%	-8%	-2%	1%	3%	2%	0%	-4%
	Other	-52%	-49%	-44%	-32%	-29%	-21%	-12%	-7%	0%	1%

Note: The percentage change is not recorded in the above table for groups with fewer than 10 placed applicants in that cycle or in the 2017 cycle.

E.4 Placed 18 year old applicants from UK by ethnic group: 12 days after A level results day

Placed 18 year old applicants: change relative to 2017 cycle totals



Note: The percentage change is not plotted in the above chart for groups with fewer than 30 placed applicants in any one cycle.

E.5 Placed 18 year old applicants from UK by ethnic group: 12 days after A level results day

Applicant Status	Ethnic group	2009	2010	2011	2012	2013	2014	2015	2016	2017	2018
Placed	Asian	18,540	18,860	20,180	20,330	21,900	23,410	25,460	27,050	28,780	30,460
	Black	6,380	6,840	7,930	8,240	9,570	10,130	11,210	11,680	12,080	12,630
	Mixed	6,110	6,200	7,150	7,040	7,560	8,250	9,390	9,810	10,460	10,590
	White	175,440	175,000	176,860	170,390	174,160	177,170	182,570	183,460	182,620	176,320
	Other	1,420	1,640	1,840	2,100	2,240	2,600	2,920	3,090	3,540	3,690

E.6 Placed 18 year old applicants from UK by ethnic group: 12 days after A level results day

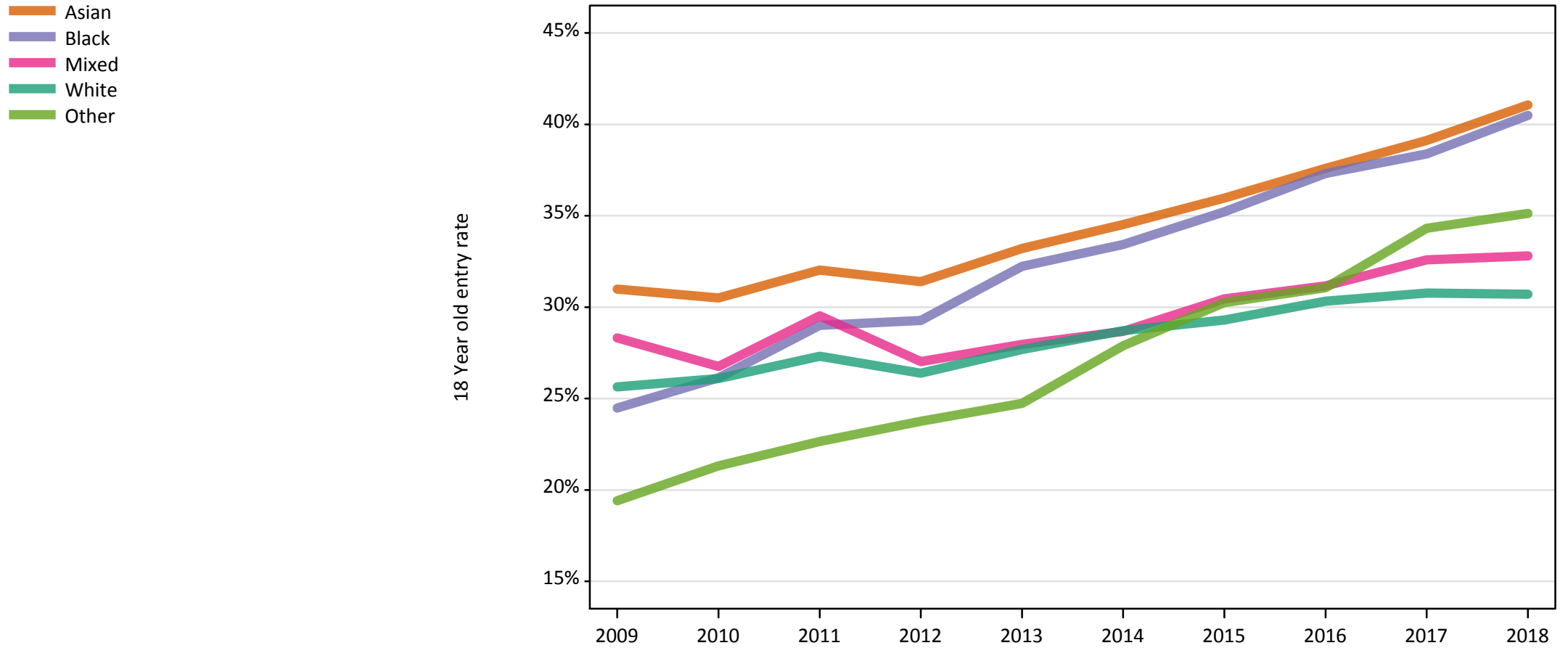
Placed 18 year old applicants: change relative to 2017 cycle totals

Applicant Status	Ethnic group	2009	2010	2011	2012	2013	2014	2015	2016	2017	2018
Placed	Asian	-36%	-34%	-30%	-29%	-24%	-19%	-12%	-6%	0%	6%
	Black	-47%	-43%	-34%	-32%	-21%	-16%	-7%	-3%	0%	5%
	Mixed	-42%	-41%	-32%	-33%	-28%	-21%	-10%	-6%	0%	1%
	White	-4%	-4%	-3%	-7%	-5%	-3%	-0%	0%	0%	-3%
	Other	-60%	-54%	-48%	-41%	-37%	-27%	-18%	-13%	0%	4%

Note: The percentage change is not recorded in the above table for groups with fewer than 10 placed applicants in that cycle or in the 2017 cycle.

E.7 Placed 18 year old applicants from UK by ethnic group: 12 days after A level results day

Placed 18 year old applicants: entry rate



E.8 Placed 18 year old applicants from UK by ethnic group: 12 days after A level results day

Placed 18 year old applicants: entry rate

Applicant Status	Ethnic group	2009	2010	2011	2012	2013	2014	2015	2016	2017	2018
Placed	Asian	31.0%	30.5%	32.0%	31.4%	33.2%	34.5%	36.0%	37.6%	39.1%	41.1%
	Black	24.5%	26.1%	29.0%	29.3%	32.2%	33.4%	35.2%	37.3%	38.4%	40.5%
	Mixed	28.3%	26.8%	29.5%	27.0%	28.0%	28.7%	30.5%	31.2%	32.6%	32.8%
	White	25.6%	26.1%	27.3%	26.4%	27.7%	28.7%	29.3%	30.3%	30.8%	30.7%
	Other	19.4%	21.3%	22.7%	23.8%	24.7%	27.9%	30.3%	31.1%	34.3%	35.1%

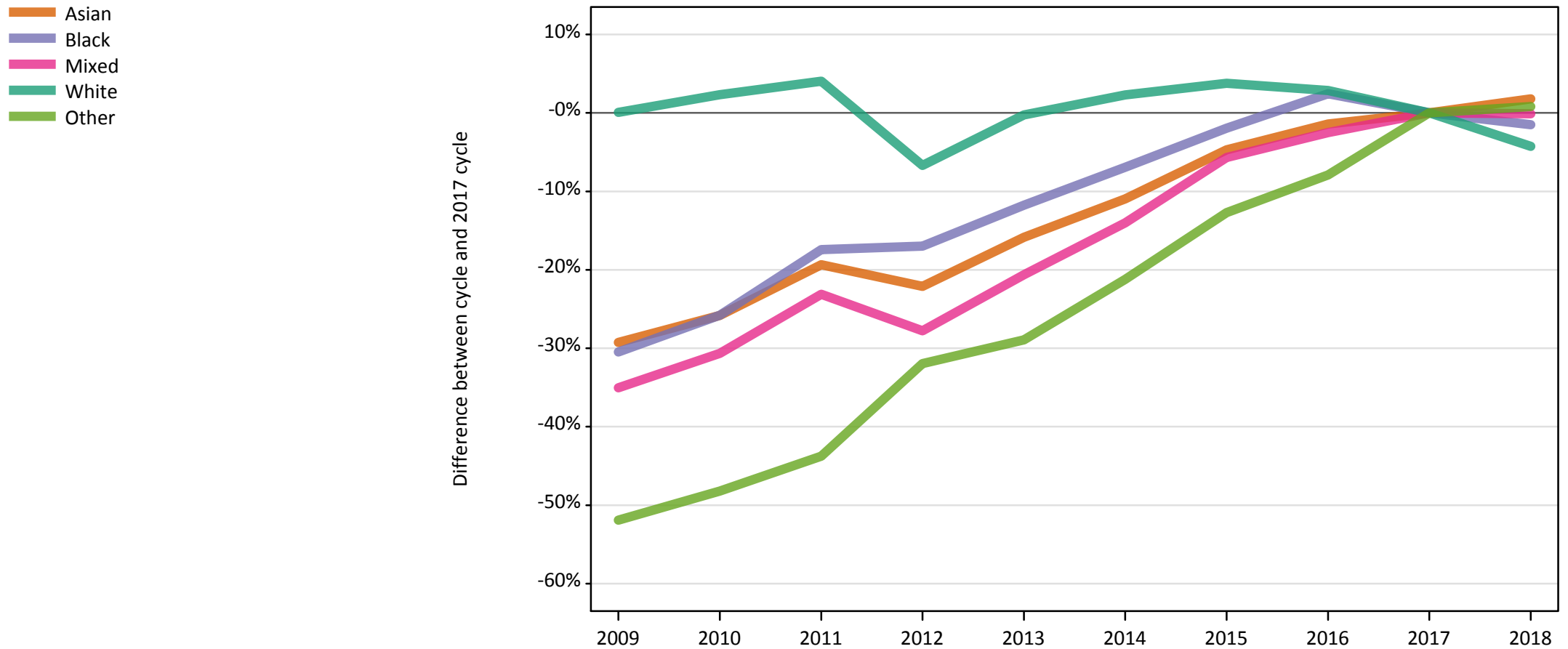
E.9 Placed 18 year old applicants from UK by ethnic group: 12 days after A level results day

Placed 18 year old applicants: entry rate (indexed to 100 = White ethnic group)

Applicant Status	Ethnic group	2009	2010	2011	2012	2013	2014	2015	2016	2017	2018
Placed	Asian	121	117	117	119	120	120	123	124	127	134
	Black	95	100	106	111	116	116	120	123	125	132
	Mixed	110	103	108	102	101	100	104	103	106	107
	White	100	100	100	100	100	100	100	100	100	100
	Other	76	82	83	90	89	97	103	102	112	114

E.10 Placed applicants from England by ethnic group: 12 days after A level results day

Placed applicants: change relative to 2017 cycle totals



Note: The percentage change is not plotted in the above chart for groups with fewer than 30 placed applicants in any one cycle.

E.11 Placed applicants from England by ethnic group: 12 days after A level results day

Applicant Status	Ethnic group	2009	2010	2011	2012	2013	2014	2015	2016	2017	2018
Placed	Asian	33,350	34,980	38,020	36,730	39,670	41,980	44,930	46,470	47,140	47,990
	Black	20,130	21,500	23,920	24,040	25,550	26,960	28,390	29,670	28,960	28,530
	Mixed	11,380	12,140	13,460	12,650	13,900	15,060	16,510	17,070	17,510	17,490
	White	252,990	258,630	262,970	235,910	252,170	258,570	262,370	259,980	252,780	241,990
	Other	3,310	3,560	3,870	4,670	4,880	5,410	6,000	6,330	6,870	6,930

E.12 Placed applicants from England by ethnic group: 12 days after A level results day

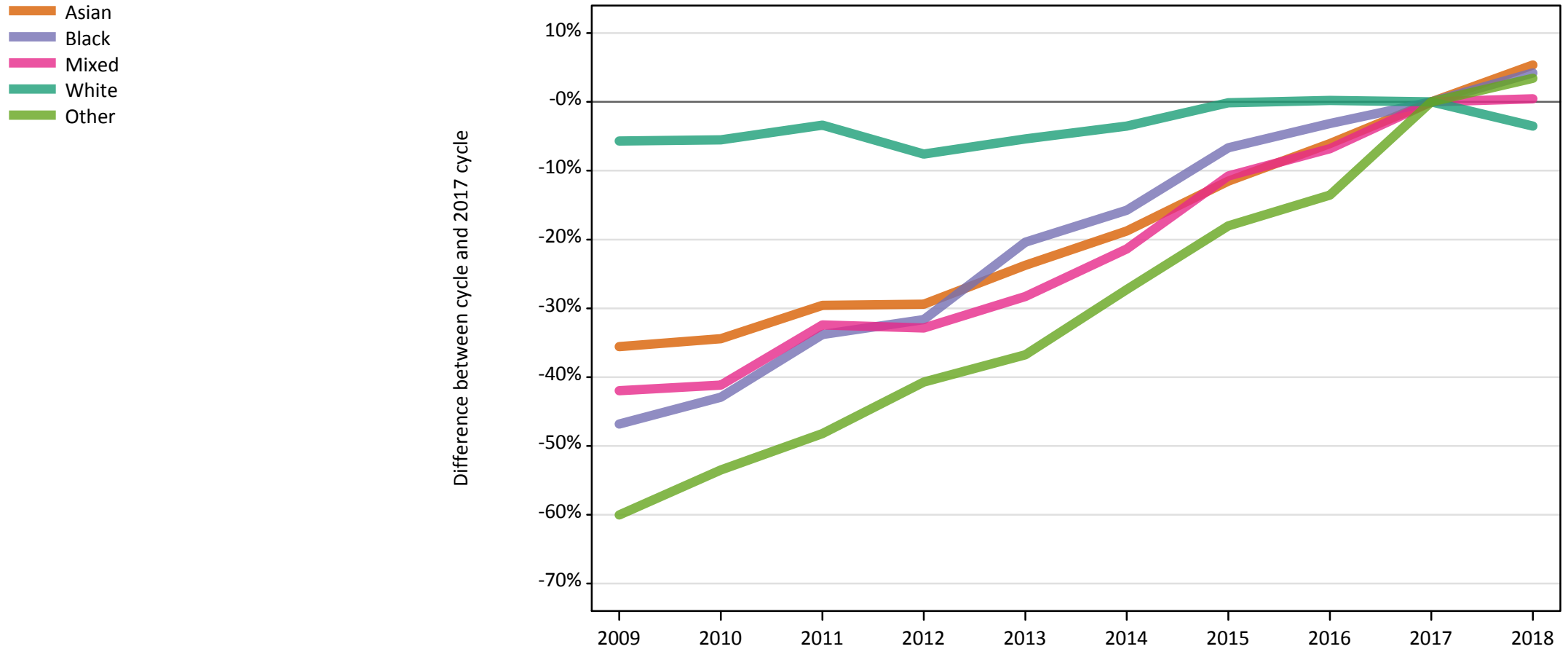
Placed applicants: change relative to 2017 cycle totals

Applicant Status	Ethnic group	2009	2010	2011	2012	2013	2014	2015	2016	2017	2018
Placed	Asian	-29%	-26%	-19%	-22%	-16%	-11%	-5%	-1%	0%	2%
	Black	-30%	-26%	-17%	-17%	-12%	-7%	-2%	2%	0%	-1%
	Mixed	-35%	-31%	-23%	-28%	-21%	-14%	-6%	-3%	0%	-0%
	White	0%	2%	4%	-7%	-0%	2%	4%	3%	0%	-4%
	Other	-52%	-48%	-44%	-32%	-29%	-21%	-13%	-8%	0%	1%

Note: The percentage change is not recorded in the above table for groups with fewer than 10 placed applicants in that cycle or in the 2017 cycle.

E.13 Placed 18 year old applicants from England by ethnic group: 12 days after A level results day

Placed 18 year old applicants: change relative to 2017 cycle totals



Note: The percentage change is not plotted in the above chart for groups with fewer than 30 placed applicants in any one cycle.

E.14 Placed 18 year old applicants from England by ethnic group: 12 days after A level results day

Applicant Status	Ethnic group	2009	2010	2011	2012	2013	2014	2015	2016	2017	2018
Placed	Asian	17,780	18,090	19,430	19,470	21,040	22,410	24,410	25,920	27,590	29,070
	Black	6,290	6,760	7,840	8,090	9,420	9,970	11,050	11,460	11,840	12,340
	Mixed	5,740	5,820	6,680	6,640	7,090	7,780	8,820	9,210	9,890	9,930
	White	142,940	143,170	146,430	140,040	143,390	146,200	151,350	151,860	151,540	146,230
	Other	1,360	1,590	1,770	2,020	2,160	2,480	2,790	2,950	3,410	3,530

E.15 Placed 18 year old applicants from England by ethnic group: 12 days after A level results day

Placed 18 year old applicants: change relative to 2017 cycle totals

Applicant Status	Ethnic group	2009	2010	2011	2012	2013	2014	2015	2016	2017	2018
Placed	Asian	-36%	-34%	-30%	-29%	-24%	-19%	-12%	-6%	0%	5%
	Black	-47%	-43%	-34%	-32%	-20%	-16%	-7%	-3%	0%	4%
	Mixed	-42%	-41%	-32%	-33%	-28%	-21%	-11%	-7%	0%	0%
	White	-6%	-6%	-3%	-8%	-5%	-4%	-0%	0%	0%	-4%
	Other	-60%	-53%	-48%	-41%	-37%	-27%	-18%	-14%	0%	3%

Note: The percentage change is not recorded in the above table for groups with fewer than 10 placed applicants in that cycle or in the 2017 cycle.

E.16 Placed applicants from Northern Ireland by ethnic group: 12 days after A level results day

Placed applicants: change relative to 2017 cycle totals



Note: The percentage change is not plotted in the above chart for groups with fewer than 30 placed applicants in any one cycle.

E.17 Placed applicants from Northern Ireland by ethnic group: 12 days after A level results day

Applicant Status	Ethnic group	2009	2010	2011	2012	2013	2014	2015	2016	2017	2018
Placed	Asian	110	120	130	130	150	150	170	210	190	220
	Black	10	20	20	20	30	50	40	60	50	50
	Mixed	90	90	100	90	100	100	130	120	140	170
	White	12,960	13,080	13,230	12,390	13,690	13,710	13,330	14,160	13,630	13,080
	Other	10	20	10	10	10	20	10	20	20	20

E.18 Placed applicants from Northern Ireland by ethnic group: 12 days after A level results day

Placed applicants: change relative to 2017 cycle totals

Applicant Status	Ethnic group	2009	2010	2011	2012	2013	2014	2015	2016	2017	2018
Placed	Asian	-42%	-40%	-34%	-33%	-21%	-21%	-10%	6%	0%	12%
	Black	-76%	-67%	-67%	-56%	-43%	-13%	-35%	2%	0%	0%
	Mixed	-34%	-36%	-24%	-38%	-27%	-31%	-2%	-12%	0%	21%
	White	-5%	-4%	-3%	-9%	0%	1%	-2%	4%	0%	-4%
	Other	-67%	-29%	-54%	-42%	-54%	-8%	-50%	-8%	0%	-8%

Note: The percentage change is not recorded in the above table for groups with fewer than 10 placed applicants in that cycle or in the 2017 cycle.

E.19 Placed 18 year old applicants from Northern Ireland by ethnic group: 12 days after A level results day

Placed 18 year old applicants: change relative to 2017 cycle totals



Note: The percentage change is not plotted in the above chart for groups with fewer than 30 placed applicants in any one cycle.

E.20 Placed 18 year old applicants from Northern Ireland by ethnic group: 12 days after A level results day

Applicant Status	Ethnic group	2009	2010	2011	2012	2013	2014	2015	2016	2017	2018
Placed	Asian	70	70	70	60	80	80	90	110	120	130
	Black	10	0	10	10	20	20	10	20	20	10
	Mixed	60	50	70	50	60	60	80	70	80	100
	White	9,080	8,670	8,420	8,050	8,510	8,310	8,170	8,370	8,210	7,790
	Other	0	10	10	10	0	10	0	10	10	10

E.21 Placed 18 year old applicants from Northern Ireland by ethnic group: 12 days after A level results day

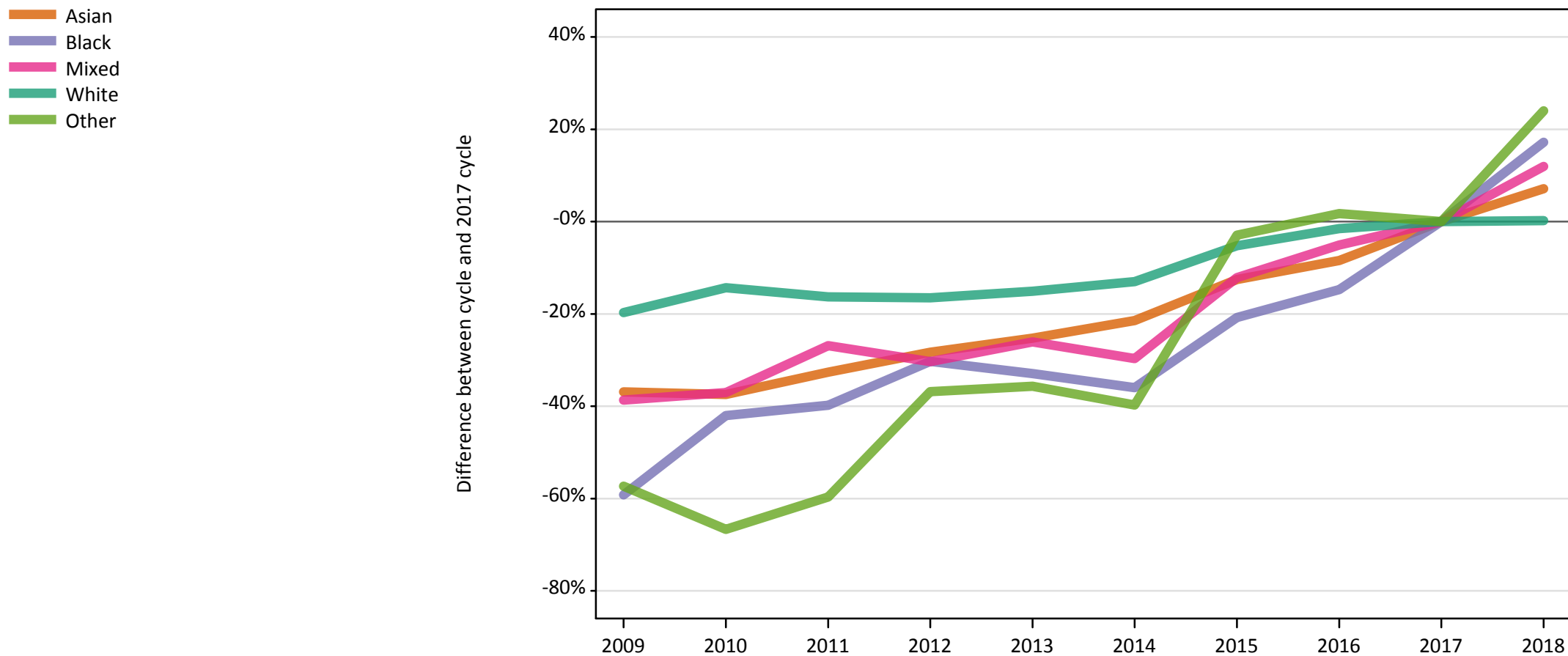
Placed 18 year old applicants: change relative to 2017 cycle totals

Applicant Status	Ethnic group	2009	2010	2011	2012	2013	2014	2015	2016	2017	2018
Placed	Asian	-41%	-43%	-42%	-45%	-32%	-29%	-20%	-7%	0%	12%
	Black	-68%		-53%	-58%	-16%	-16%	-42%	-5%	0%	-26%
	Mixed	-26%	-37%	-17%	-41%	-24%	-27%	3%	-5%	0%	27%
	White	11%	6%	2%	-2%	4%	1%	-1%	2%	0%	-5%
	Other		-30%	-50%	-50%		20%		0%	0%	30%

Note: The percentage change is not recorded in the above table for groups with fewer than 10 placed applicants in that cycle or in the 2017 cycle.

E.22 Placed applicants from Scotland by ethnic group: 12 days after A level results day

Placed applicants: change relative to 2017 cycle totals



Note: The percentage change is not plotted in the above chart for groups with fewer than 30 placed applicants in any one cycle.

E.23 Placed applicants from Scotland by ethnic group: 12 days after A level results day

Applicant Status	Ethnic group	2009	2010	2011	2012	2013	2014	2015	2016	2017	2018
Placed	Asian	950	940	1,010	1,080	1,130	1,180	1,320	1,380	1,510	1,610
	Black	200	290	300	350	330	320	390	420	500	580
	Mixed	370	380	450	430	450	430	540	580	610	680
	White	24,880	26,560	25,940	25,880	26,310	26,960	29,380	30,530	31,000	31,060
	Other	70	60	70	110	110	100	170	170	170	210

E.24 Placed applicants from Scotland by ethnic group: 12 days after A level results day

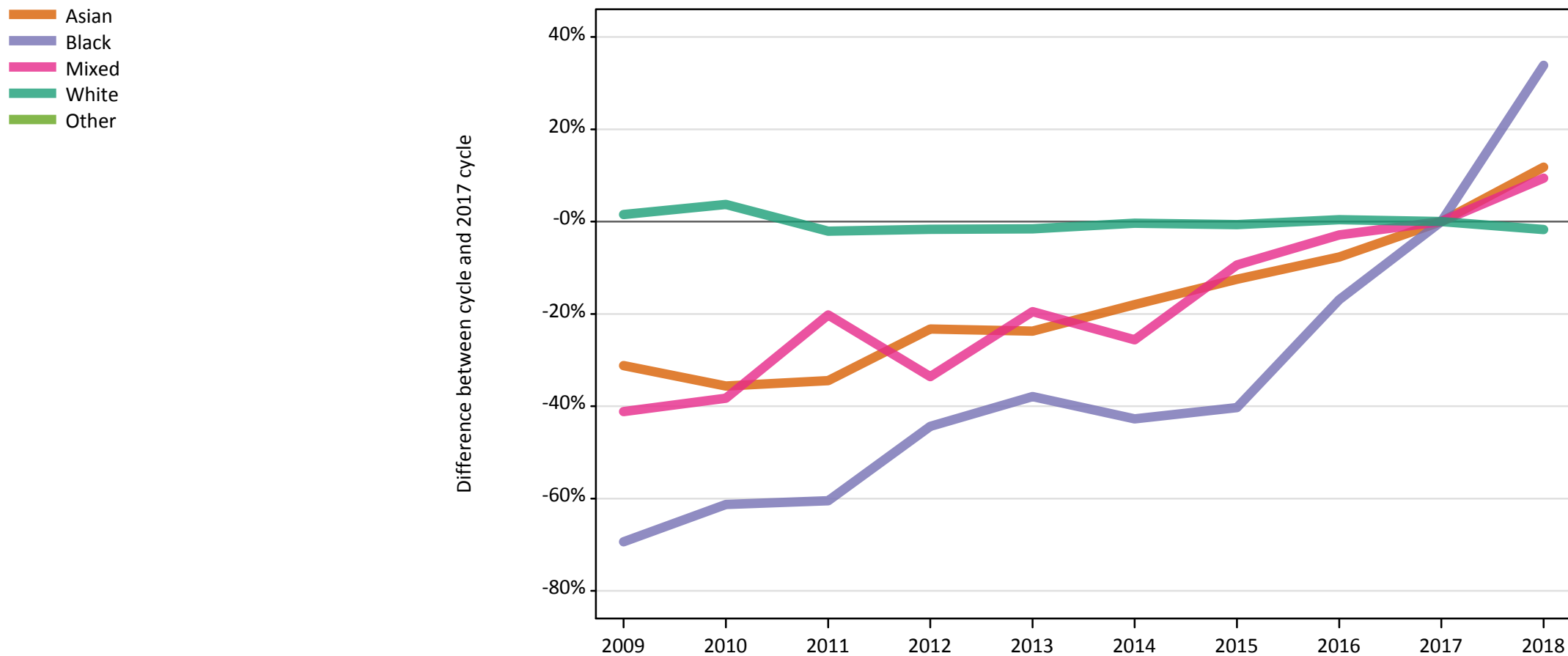
Placed applicants: change relative to 2017 cycle totals

Applicant Status	Ethnic group	2009	2010	2011	2012	2013	2014	2015	2016	2017	2018
Placed	Asian	-37%	-37%	-33%	-28%	-25%	-21%	-13%	-8%	0%	7%
	Black	-59%	-42%	-40%	-30%	-33%	-36%	-21%	-15%	0%	17%
	Mixed	-39%	-37%	-27%	-30%	-26%	-30%	-12%	-5%	0%	12%
	White	-20%	-14%	-16%	-17%	-15%	-13%	-5%	-2%	0%	0%
	Other	-57%	-67%	-60%	-37%	-36%	-40%	-3%	2%	0%	24%

Note: The percentage change is not recorded in the above table for groups with fewer than 10 placed applicants in that cycle or in the 2017 cycle.

E.25 Placed 18 year old applicants from Scotland by ethnic group: 12 days after A level results day

Placed 18 year old applicants: change relative to 2017 cycle totals



Note: The percentage change is not plotted in the above chart for groups with fewer than 30 placed applicants in any one cycle.

E.26 Placed 18 year old applicants from Scotland by ethnic group: 12 days after A level results day

Applicant Status	Ethnic group	2009	2010	2011	2012	2013	2014	2015	2016	2017	2018
Placed	Asian	470	440	450	520	520	560	590	630	680	760
	Black	40	50	50	70	80	70	70	100	120	170
	Mixed	160	170	220	180	220	210	250	270	280	300
	White	13,660	13,950	13,170	13,220	13,240	13,400	13,360	13,510	13,450	13,220
	Other	30	20	30	40	40	40	60	60	60	80

E.27 Placed 18 year old applicants from Scotland by ethnic group: 12 days after A level results day

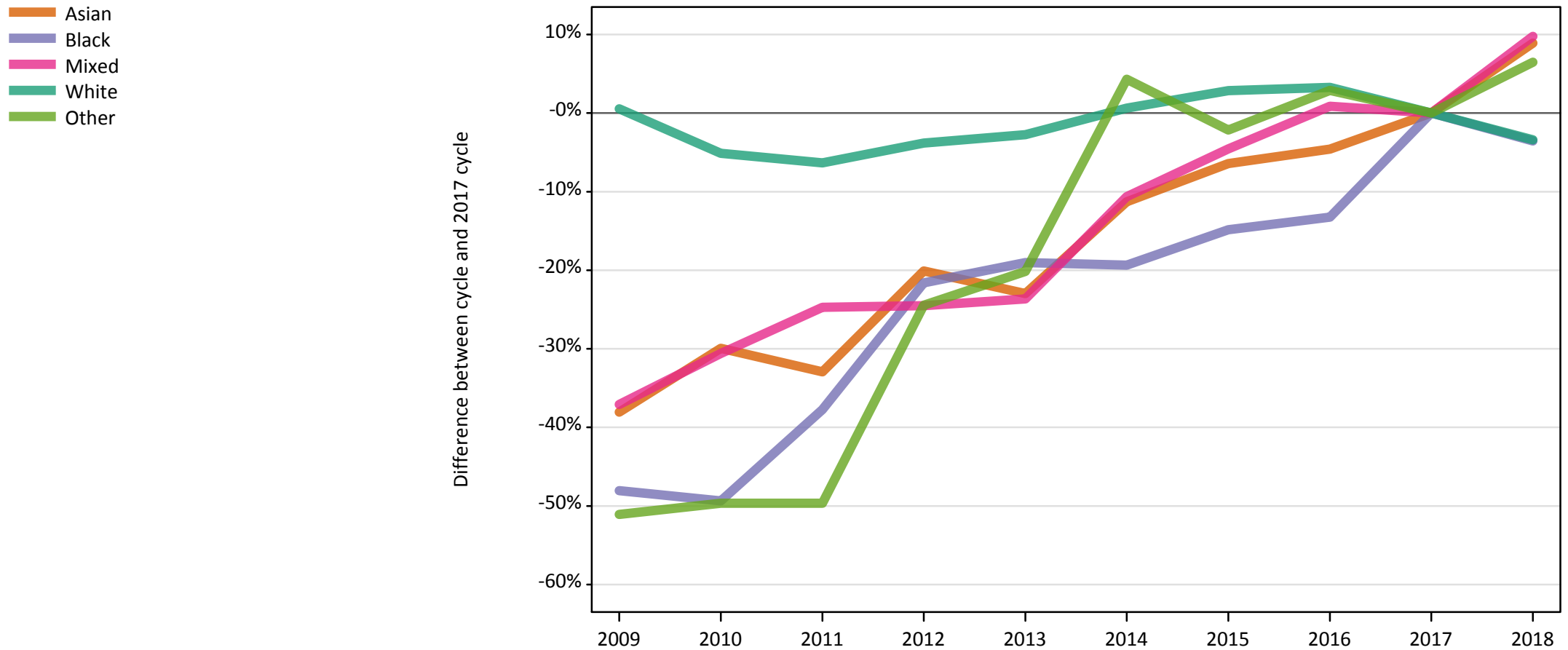
Placed 18 year old applicants: change relative to 2017 cycle totals

Applicant Status	Ethnic group	2009	2010	2011	2012	2013	2014	2015	2016	2017	2018
Placed	Asian	-31%	-36%	-34%	-23%	-24%	-18%	-13%	-8%	0%	12%
	Black	-69%	-61%	-60%	-44%	-38%	-43%	-40%	-17%	0%	34%
	Mixed	-41%	-38%	-20%	-34%	-19%	-26%	-9%	-3%	0%	9%
	White	2%	4%	-2%	-2%	-2%	-0%	-1%	0%	0%	-2%
	Other	-56%	-73%	-49%	-43%	-33%	-43%	-3%	-2%	0%	22%

Note: The percentage change is not recorded in the above table for groups with fewer than 10 placed applicants in that cycle or in the 2017 cycle.

E.28 Placed applicants from Wales by ethnic group: 12 days after A level results day

Placed applicants: change relative to 2017 cycle totals



Note: The percentage change is not plotted in the above chart for groups with fewer than 30 placed applicants in any one cycle.

E.29 Placed applicants from Wales by ethnic group: 12 days after A level results day

Applicant Status	Ethnic group	2009	2010	2011	2012	2013	2014	2015	2016	2017	2018
Placed	Asian	470	530	510	610	590	680	710	730	760	830
	Black	160	160	190	240	250	250	260	270	310	300
	Mixed	290	320	350	350	350	410	440	470	460	510
	White	16,980	16,020	15,820	16,240	16,420	17,000	17,370	17,440	16,890	16,320
	Other	70	70	70	110	110	150	140	140	140	150

E.30 Placed applicants from Wales by ethnic group: 12 days after A level results day

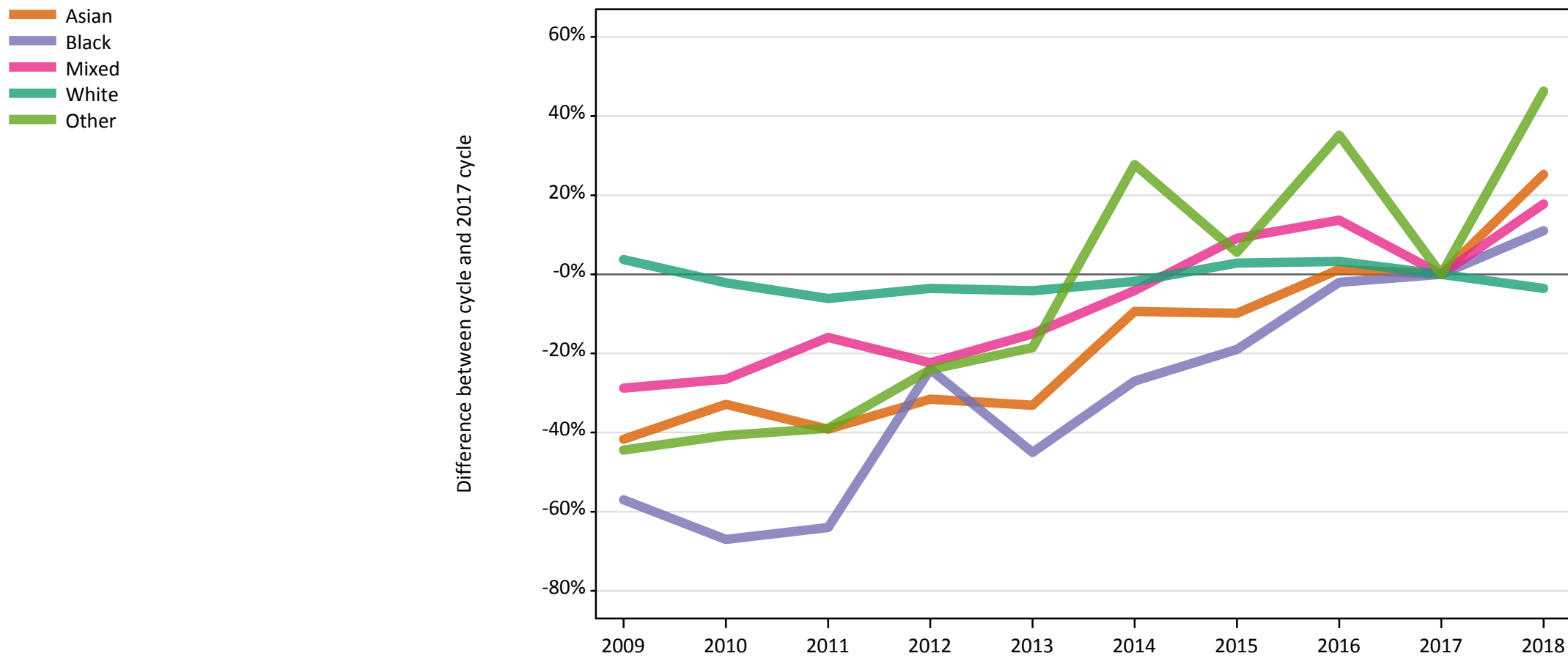
Placed applicants: change relative to 2017 cycle totals

Applicant Status	Ethnic group	2009	2010	2011	2012	2013	2014	2015	2016	2017	2018
Placed	Asian	-38%	-30%	-33%	-20%	-23%	-11%	-6%	-5%	0%	9%
	Black	-48%	-49%	-38%	-22%	-19%	-19%	-15%	-13%	0%	-4%
	Mixed	-37%	-31%	-25%	-25%	-24%	-11%	-5%	1%	0%	10%
	White	1%	-5%	-6%	-4%	-3%	1%	3%	3%	0%	-3%
	Other	-51%	-50%	-50%	-24%	-20%	4%	-2%	3%	0%	6%

Note: The percentage change is not recorded in the above table for groups with fewer than 10 placed applicants in that cycle or in the 2017 cycle.

E.31 Placed 18 year old applicants from Wales by ethnic group: 12 days after A level results day

Placed 18 year old applicants: change relative to 2017 cycle totals



Note: The percentage change is not plotted in the above chart for groups with fewer than 30 placed applicants in any one cycle.

E.32 Placed 18 year old applicants from Wales by ethnic group: 12 days after A level results day

Applicant Status	Ethnic group	2009	2010	2011	2012	2013	2014	2015	2016	2017	2018
Placed	Asian	230	270	240	270	270	360	360	400	400	500
	Black	40	30	40	80	60	70	80	100	100	110
	Mixed	160	160	180	170	190	210	240	250	220	260
	White	9,770	9,220	8,850	9,080	9,030	9,250	9,690	9,730	9,420	9,080
	Other	30	30	30	40	40	70	60	70	50	80

E.33 Placed 18 year old applicants from Wales by ethnic group: 12 days after A level results day

Placed 18 year old applicants: change relative to 2017 cycle totals

Applicant Status	Ethnic group	2009	2010	2011	2012	2013	2014	2015	2016	2017	2018
Placed	Asian	-42%	-33%	-39%	-32%	-33%	-9%	-10%	1%	0%	25%
	Black	-57%	-67%	-64%	-24%	-45%	-27%	-19%	-2%	0%	11%
	Mixed	-29%	-26%	-16%	-22%	-15%	-4%	9%	14%	0%	18%
	White	4%	-2%	-6%	-4%	-4%	-2%	3%	3%	0%	-4%
	Other	-44%	-41%	-39%	-24%	-19%	28%	6%	35%	0%	46%

Note: The percentage change is not recorded in the above table for groups with fewer than 10 placed applicants in that cycle or in the 2017 cycle.