

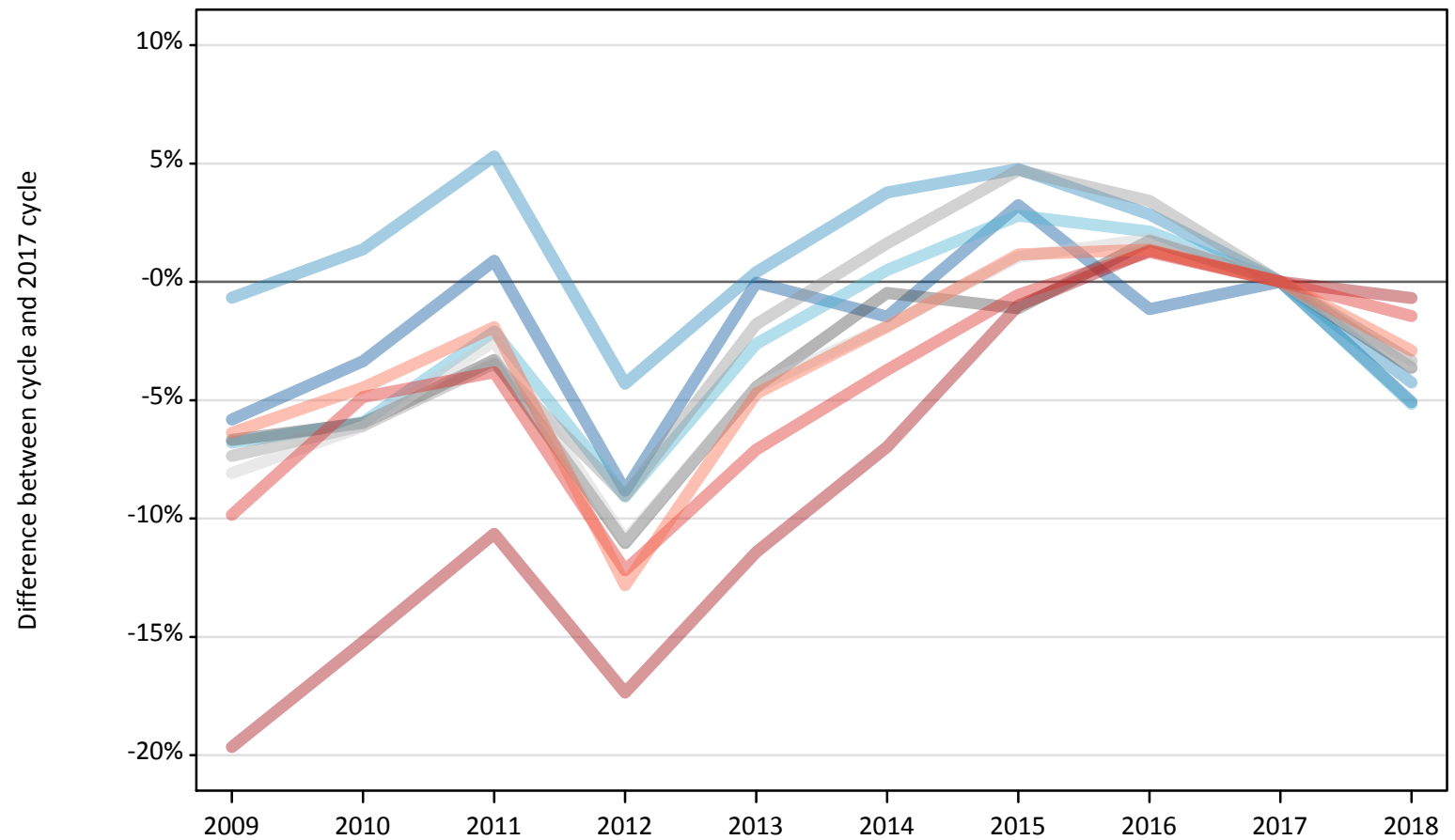
# Daily Clearing Analysis: Region

Analysis at 00:05 on Tuesday 28 August 2018 (12 days after A level results day)

## R.1 Placed applicants by region of domicile: 12 days after A level results day

Placed applicants: change relative to 2017 cycle totals

- North East
- North West
- Yorkshire and The Humber
- East Midlands
- West Midlands
- East of England
- London
- South East
- South West



Note: The percentage change is not plotted in the above chart for groups with fewer than 30 placed applicants in any one cycle.

## R.2 Placed applicants by region of domicile: 12 days after A level results day

Applicant Status	Domicile	2009	2010	2011	2012	2013	2014	2015	2016	2017	2018
Placed	North East	14,390	14,760	15,410	13,930	15,270	15,050	15,770	15,100	15,280	14,500
	North West	45,500	46,440	48,230	43,840	45,990	47,540	47,990	47,110	45,810	43,860
	Yorkshire and The Humber	30,170	30,450	31,690	29,430	31,520	32,530	33,270	33,060	32,370	30,700
	East Midlands	25,860	26,050	26,790	24,650	26,480	27,580	27,400	28,190	27,710	26,700
	West Midlands	34,200	34,670	35,630	33,570	36,250	37,510	38,650	38,170	36,910	35,680
	East of England	34,000	34,730	36,060	32,950	35,340	36,290	37,380	37,660	36,990	35,690
	London	55,990	59,090	62,270	57,590	61,730	64,830	68,990	70,610	69,690	69,220
	South East	52,910	55,830	56,450	51,540	54,520	56,500	58,370	59,430	58,690	57,840
	South West	30,850	31,470	32,320	28,730	31,390	32,320	33,330	33,400	32,950	31,990
	(England total)	323,850	333,490	344,850	316,220	338,490	350,140	361,150	362,720	356,380	346,160
	Scotland	26,630	28,360	27,890	27,940	28,460	29,110	31,960	33,300	34,020	34,420
	Northern Ireland	13,220	13,340	13,510	12,660	14,000	14,040	13,730	14,600	14,090	13,580
	Wales	18,090	17,180	17,020	17,620	17,800	18,570	19,010	19,140	18,690	18,240
	UK	381,780	392,370	403,270	374,430	398,750	411,860	425,850	429,750	423,190	412,400

### R.3 Placed applicants by region of domicile: 12 days after A level results day

Placed applicants: change relative to 2017 cycle totals

Applicant Status	Domicile	2009	2010	2011	2012	2013	2014	2015	2016	2017	2018
Placed	North East	-6%	-3%	1%	-9%	-0%	-1%	3%	-1%	0%	-5%
	North West	-1%	1%	5%	-4%	0%	4%	5%	3%	0%	-4%
	Yorkshire and The Humber	-7%	-6%	-2%	-9%	-3%	0%	3%	2%	0%	-5%
	East Midlands	-7%	-6%	-3%	-11%	-4%	-0%	-1%	2%	0%	-4%
	West Midlands	-7%	-6%	-3%	-9%	-2%	2%	5%	3%	0%	-3%
	East of England	-8%	-6%	-3%	-11%	-4%	-2%	1%	2%	0%	-4%
	London	-20%	-15%	-11%	-17%	-11%	-7%	-1%	1%	0%	-1%
	South East	-10%	-5%	-4%	-12%	-7%	-4%	-1%	1%	0%	-1%
	South West	-6%	-4%	-2%	-13%	-5%	-2%	1%	1%	0%	-3%
	(England total)	-9%	-6%	-3%	-11%	-5%	-2%	1%	2%	0%	-3%
	Scotland	-22%	-17%	-18%	-18%	-16%	-14%	-6%	-2%	0%	1%
	Northern Ireland	-6%	-5%	-4%	-10%	-1%	-0%	-3%	4%	0%	-4%
	Wales	-3%	-8%	-9%	-6%	-5%	-1%	2%	2%	0%	-2%
	UK	-10%	-7%	-5%	-12%	-6%	-3%	1%	2%	0%	-3%

Note: The percentage change is not recorded in the above table for groups with fewer than 10 placed applicants in that cycle or in the 2017 cycle.

#### R.4 Placed applicants by region of domicile: 12 days after A level results day

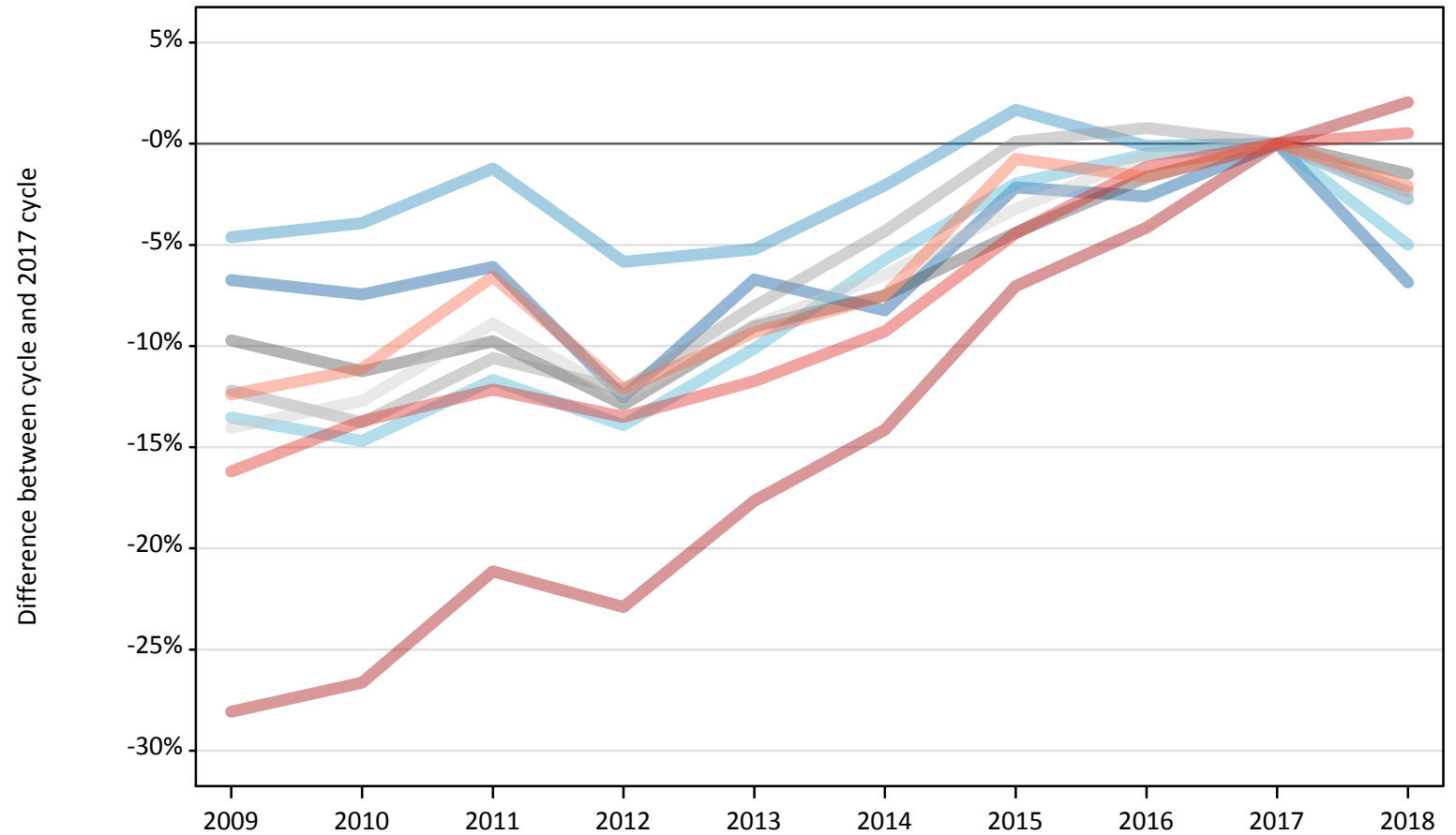
Placed applicants: absolute change relative to 2017 cycle totals

Applicant Status	Domicile	2009	2010	2011	2012	2013	2014	2015	2016	2017	2018
Placed	North East	-890	-510	140	-1,350	-10	-230	500	-180	0	-780
	North West	-310	630	2,430	-1,970	190	1,730	2,180	1,300	0	-1,950
	Yorkshire and The Humber	-2,200	-1,920	-680	-2,940	-850	160	910	690	0	-1,670
	East Midlands	-1,850	-1,650	-910	-3,060	-1,230	-130	-310	480	0	-1,010
	West Midlands	-2,710	-2,240	-1,270	-3,340	-660	600	1,740	1,260	0	-1,230
	East of England	-2,990	-2,260	-930	-4,040	-1,650	-690	390	670	0	-1,300
	London	-13,700	-10,600	-7,420	-12,100	-7,960	-4,870	-700	920	0	-470
	South East	-5,780	-2,850	-2,240	-7,150	-4,160	-2,190	-320	740	0	-850
	South West	-2,100	-1,470	-630	-4,220	-1,560	-630	380	450	0	-960
	(England total)	-32,530	-22,880	-11,530	-40,160	-17,890	-6,230	4,770	6,340	0	-10,220
	Scotland	-7,400	-5,670	-6,130	-6,090	-5,560	-4,920	-2,060	-720	0	390
	Northern Ireland	-880	-750	-580	-1,430	-90	-50	-360	500	0	-510
	Wales	-600	-1,510	-1,670	-1,070	-900	-130	320	450	0	-460
	UK	-41,410	-30,810	-19,910	-48,750	-24,440	-11,320	2,670	6,570	0	-10,790

## R.5 Placed 18 year old applicants by region of domicile: 12 days after A level results day

Placed 18 year old applicants: change relative to 2017 cycle totals

- North East
- North West
- Yorkshire and The Humber
- East Midlands
- West Midlands
- East of England
- London
- South East
- South West



Note: The percentage change is not plotted in the above chart for groups with fewer than 30 placed applicants in any one cycle.

## R.6 Placed 18 year old applicants by region of domicile: 12 days after A level results day

Applicant Status	Domicile	2009	2010	2011	2012	2013	2014	2015	2016	2017	2018
Placed	North East	8,050	7,980	8,100	7,550	8,050	7,920	8,440	8,400	8,630	8,030
	North West	25,470	25,650	26,370	25,140	25,310	26,150	27,150	26,670	26,700	25,970
	Yorkshire and The Humber	16,550	16,330	16,910	16,480	17,210	18,050	18,770	19,040	19,140	18,190
	East Midlands	14,690	14,440	14,680	14,170	14,800	15,050	15,550	16,000	16,270	16,030
	West Midlands	18,560	18,230	18,900	18,570	19,440	20,220	21,160	21,300	21,140	20,640
	East of England	19,690	19,990	20,870	20,040	20,850	21,420	22,160	22,770	22,900	22,310
	London	27,240	27,780	29,860	29,200	31,180	32,510	35,200	36,300	37,860	38,640
	South East	29,640	30,520	31,060	30,590	31,210	32,080	33,800	34,960	35,360	35,550
	South West	15,370	15,590	16,400	15,420	15,910	16,230	17,420	17,260	17,550	17,180
	(England total)	175,240	176,510	183,150	177,150	183,950	189,630	199,640	202,700	205,550	202,530
	Scotland	14,400	14,670	13,960	14,060	14,140	14,310	14,400	14,640	14,650	14,590
	Northern Ireland	9,240	8,810	8,570	8,180	8,670	8,480	8,380	8,600	8,470	8,060
	Wales	10,280	9,740	9,380	9,670	9,600	9,990	10,460	10,580	10,240	10,080
	UK	209,160	209,730	215,060	209,070	216,370	222,410	232,870	236,520	238,900	235,260

## R.7 Placed 18 year old applicants by region of domicile: 12 days after A level results day

Placed 18 year old applicants: change relative to 2017 cycle totals

Applicant Status	Domicile	2009	2010	2011	2012	2013	2014	2015	2016	2017	2018
Placed	North East	-7%	-7%	-6%	-13%	-7%	-8%	-2%	-3%	0%	-7%
	North West	-5%	-4%	-1%	-6%	-5%	-2%	2%	-0%	0%	-3%
	Yorkshire and The Humber	-14%	-15%	-12%	-14%	-10%	-6%	-2%	-1%	0%	-5%
	East Midlands	-10%	-11%	-10%	-13%	-9%	-7%	-4%	-2%	0%	-1%
	West Midlands	-12%	-14%	-11%	-12%	-8%	-4%	0%	1%	0%	-2%
	East of England	-14%	-13%	-9%	-12%	-9%	-6%	-3%	-1%	0%	-3%
	London	-28%	-27%	-21%	-23%	-18%	-14%	-7%	-4%	0%	2%
	South East	-16%	-14%	-12%	-14%	-12%	-9%	-4%	-1%	0%	1%
	South West	-12%	-11%	-7%	-12%	-9%	-8%	-1%	-2%	0%	-2%
	(England total)	-15%	-14%	-11%	-14%	-11%	-8%	-3%	-1%	0%	-1%
	Scotland	-2%	0%	-5%	-4%	-3%	-2%	-2%	-0%	0%	-0%
	Northern Ireland	9%	4%	1%	-3%	2%	0%	-1%	1%	0%	-5%
	Wales	0%	-5%	-8%	-6%	-6%	-2%	2%	3%	0%	-2%
	UK	-12%	-12%	-10%	-12%	-9%	-7%	-3%	-1%	0%	-2%

Note: The percentage change is not recorded in the above table for groups with fewer than 10 placed applicants in that cycle or in the 2017 cycle.

## R.8 Placed 18 year old applicants by region of domicile: 12 days after A level results day

Placed 18 year old applicants: absolute change relative to 2017 cycle totals

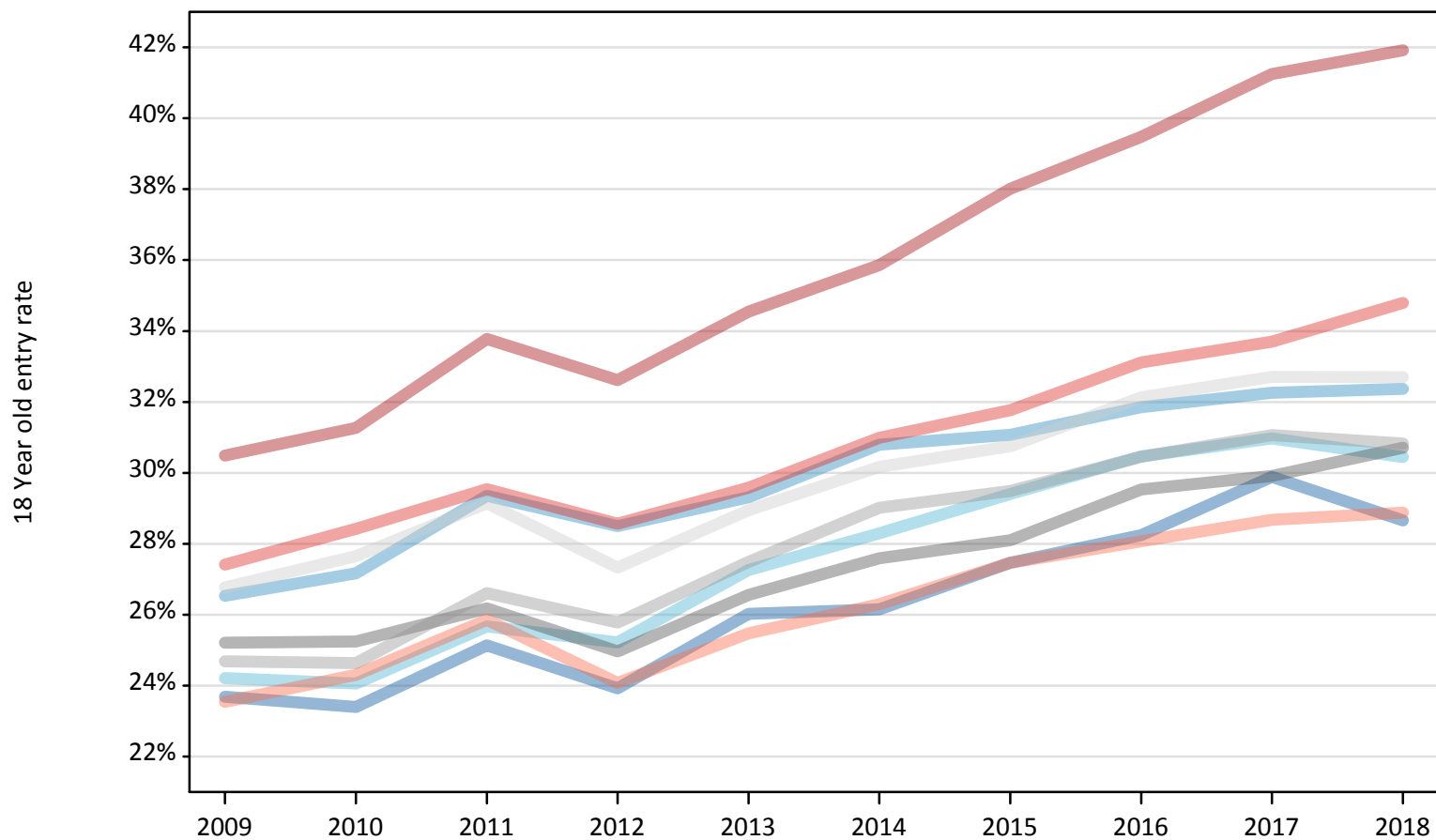
Applicant Status	Domicile	2009	2010	2011	2012	2013	2014	2015	2016	2017	2018
Placed	North East	-580	-640	-530	-1,080	-580	-710	-190	-220	0	-590
	North West	-1,230	-1,050	-330	-1,560	-1,390	-550	450	-30	0	-730
	Yorkshire and The Humber	-2,590	-2,810	-2,240	-2,660	-1,940	-1,090	-380	-100	0	-960
	East Midlands	-1,580	-1,830	-1,590	-2,100	-1,470	-1,220	-720	-270	0	-240
	West Midlands	-2,580	-2,910	-2,240	-2,570	-1,700	-910	20	170	0	-500
	East of England	-3,220	-2,910	-2,040	-2,860	-2,050	-1,490	-740	-130	0	-600
	London	-10,630	-10,080	-8,000	-8,670	-6,680	-5,350	-2,660	-1,570	0	780
	South East	-5,730	-4,850	-4,300	-4,780	-4,150	-3,280	-1,560	-400	0	190
	South West	-2,170	-1,950	-1,150	-2,130	-1,630	-1,320	-130	-290	0	-370
	(England total)	-30,310	-29,040	-22,400	-28,400	-21,590	-15,920	-5,910	-2,850	0	-3,020
	Scotland	-250	20	-690	-590	-510	-340	-250	-10	0	-60
	Northern Ireland	770	340	100	-290	200	10	-90	130	0	-410
	Wales	40	-500	-850	-560	-640	-250	220	350	0	-160
	UK	-29,740	-29,170	-23,840	-29,840	-22,540	-16,500	-6,040	-2,380	0	-3,640



## R.9 Placed 18 year old applicants by region of domicile: 12 days after A level results day

Placed 18 year old applicants: entry rate

- North East
- North West
- Yorkshire and The Humber
- East Midlands
- West Midlands
- East of England
- London
- South East
- South West



## R.10 Placed 18 year old applicants by region of domicile: 12 days after A level results day

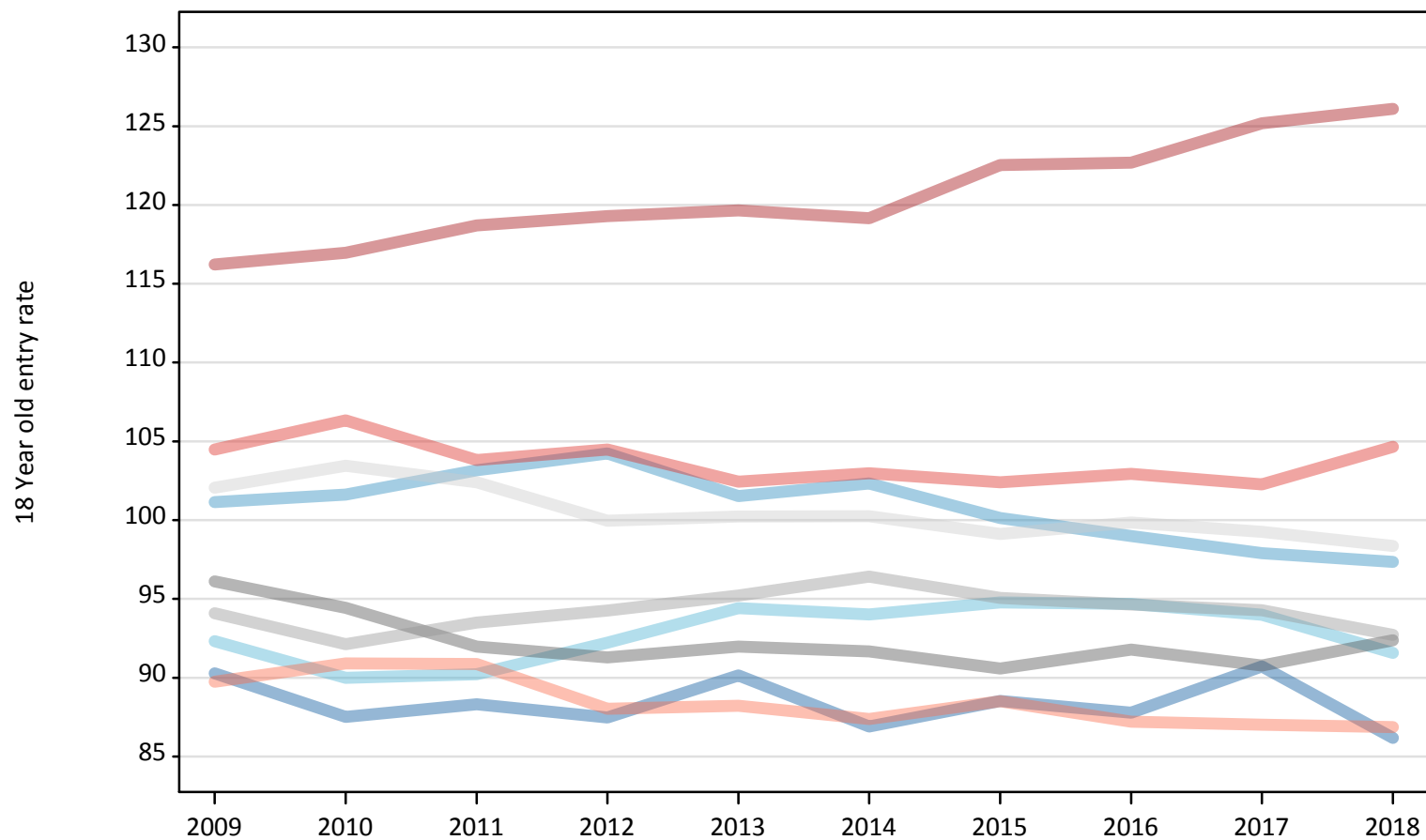
### Placed 18 year old applicants: entry rate

Applicant Status	Domicile	2009	2010	2011	2012	2013	2014	2015	2016	2017	2018
Placed	North East	23.7%	23.4%	25.1%	23.9%	26.0%	26.2%	27.5%	28.2%	29.9%	28.7%
	North West	26.5%	27.2%	29.4%	28.5%	29.3%	30.8%	31.1%	31.9%	32.3%	32.4%
	Yorkshire and The Humber	24.2%	24.1%	25.7%	25.2%	27.3%	28.3%	29.4%	30.5%	31.0%	30.4%
	East Midlands	25.2%	25.2%	26.2%	25.0%	26.6%	27.6%	28.1%	29.5%	29.9%	30.7%
	West Midlands	24.7%	24.6%	26.6%	25.8%	27.5%	29.0%	29.5%	30.5%	31.1%	30.8%
	East of England	26.8%	27.7%	29.1%	27.3%	28.9%	30.2%	30.8%	32.1%	32.7%	32.7%
	London	30.5%	31.3%	33.8%	32.6%	34.5%	35.9%	38.0%	39.5%	41.2%	41.9%
	South East	27.4%	28.4%	29.5%	28.6%	29.6%	31.0%	31.8%	33.1%	33.7%	34.8%
	South West	23.5%	24.3%	25.9%	24.1%	25.5%	26.3%	27.5%	28.1%	28.7%	28.9%
	(England total)	26.2%	26.7%	28.5%	27.3%	28.9%	30.1%	31.0%	32.2%	32.9%	33.2%
	Scotland	22.2%	23.0%	22.2%	22.7%	23.0%	23.3%	23.9%	24.9%	25.5%	26.3%
	Northern Ireland	35.6%	34.5%	34.3%	32.5%	35.4%	34.9%	33.7%	35.2%	35.0%	34.8%
	Wales	25.5%	24.4%	24.3%	25.1%	25.4%	26.6%	27.8%	29.1%	28.8%	29.3%
	UK	26.2%	26.6%	27.9%	27.0%	28.4%	29.5%	30.4%	31.6%	32.2%	32.6%

### R.11 Placed 18 year old applicants by region of domicile: 12 days after A level results day

Placed 18 year old applicants: entry rates (indexed to 100 = England)

- North East
- North West
- Yorkshire and The Humber
- East Midlands
- West Midlands
- East of England
- London
- South East
- South West



**R.12 Placed 18 year old applicants by region of domicile: 12 days after A level results day**

Placed 18 year old applicants: entry rate (indexed to 100 = England)

Applicant Status	Domicile	2009	2010	2011	2012	2013	2014	2015	2016	2017	2018
Placed	North East	90	88	88	87	90	87	89	88	91	86
	North West	101	102	103	104	102	102	100	99	98	97
	Yorkshire and The Humber	92	90	90	92	94	94	95	95	94	92
	East Midlands	96	94	92	91	92	92	91	92	91	92
	West Midlands	94	92	94	94	95	96	95	95	94	93
	East of England	102	103	102	100	100	100	99	100	99	98
	London	116	117	119	119	120	119	123	123	125	126
	South East	104	106	104	104	102	103	102	103	102	105
	South West	90	91	91	88	88	87	89	87	87	87
	(England total)	100	100	100	100	100	100	100	100	100	100