

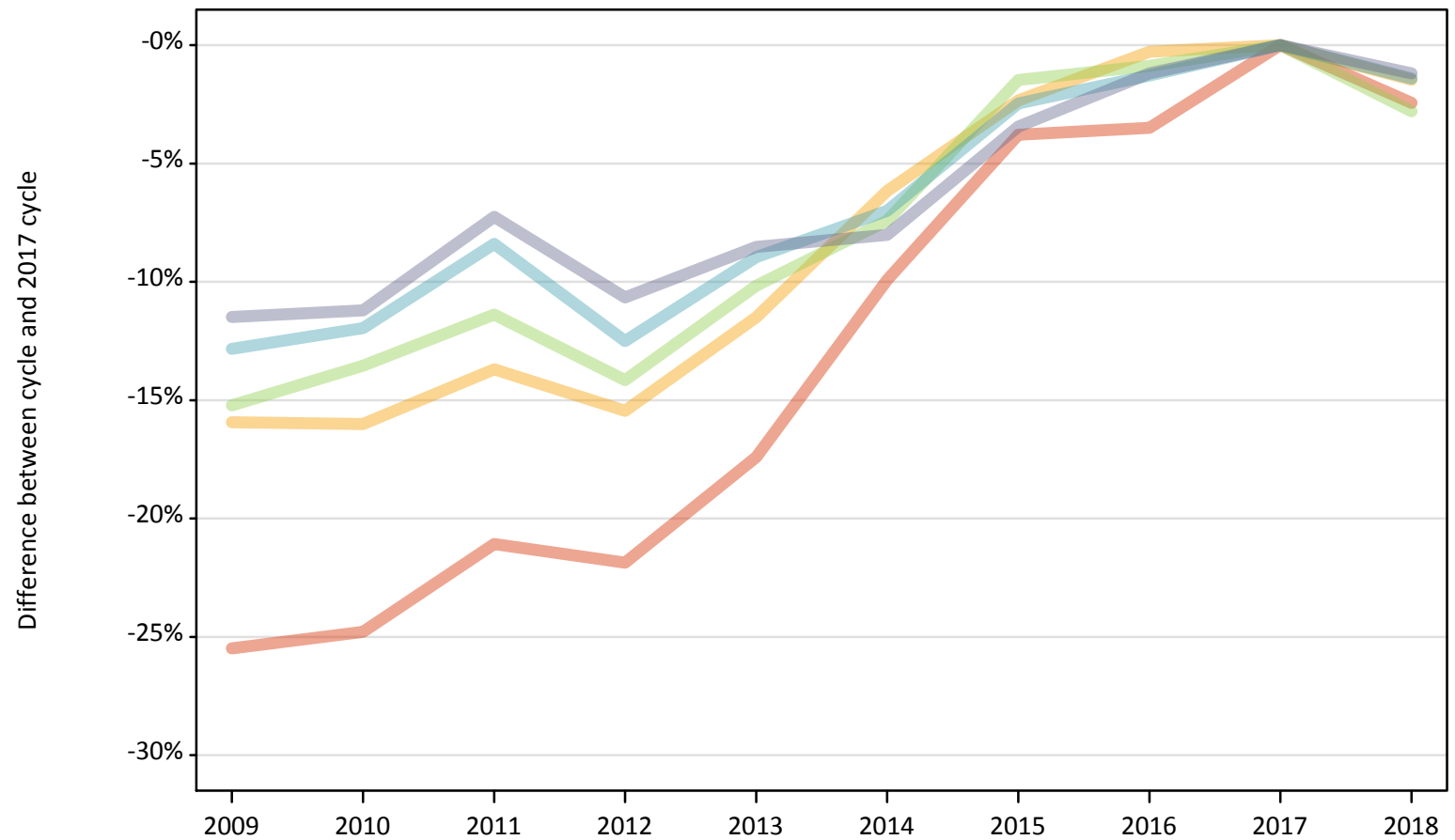
Daily Clearing Analysis: POLAR4

Analysis at 00:05 on Tuesday 28 August 2018 (12 days after A level results day)

P.1 Placed 18 year old applicants from England by POLAR4 quintile: 12 days after A level results day

Placed 18 year old applicants: change relative to 2017 cycle totals

- Quintile 1
- Quintile 2
- Quintile 3
- Quintile 4
- Quintile 5



Note: The percentage change is not plotted in the above chart for groups with fewer than 30 placed applicants in any one cycle.

P.2 Placed 18 year old applicants from England by POLAR4 quintile: 12 days after A level results day

Applicant Status	POLAR4	2009	2010	2011	2012	2013	2014	2015	2016	2017	2018
Placed	Quintile 1	16,650	16,810	17,640	17,470	18,460	20,130	21,510	21,570	22,350	21,810
	Quintile 2	25,930	25,910	26,620	26,080	27,300	28,950	30,130	30,760	30,850	30,400
	Quintile 3	32,370	33,020	33,840	32,780	34,310	35,350	37,630	37,860	38,190	37,120
	Quintile 4	40,810	41,230	42,890	40,970	42,630	43,550	45,670	46,230	46,820	46,160
	Quintile 5	58,990	59,180	61,810	59,540	60,960	61,300	64,350	65,850	66,650	65,850

P.3 Placed 18 year old applicants from England by POLAR4 quintile: 12 days after A level results day

Placed 18 year old applicants: change relative to 2017 cycle totals

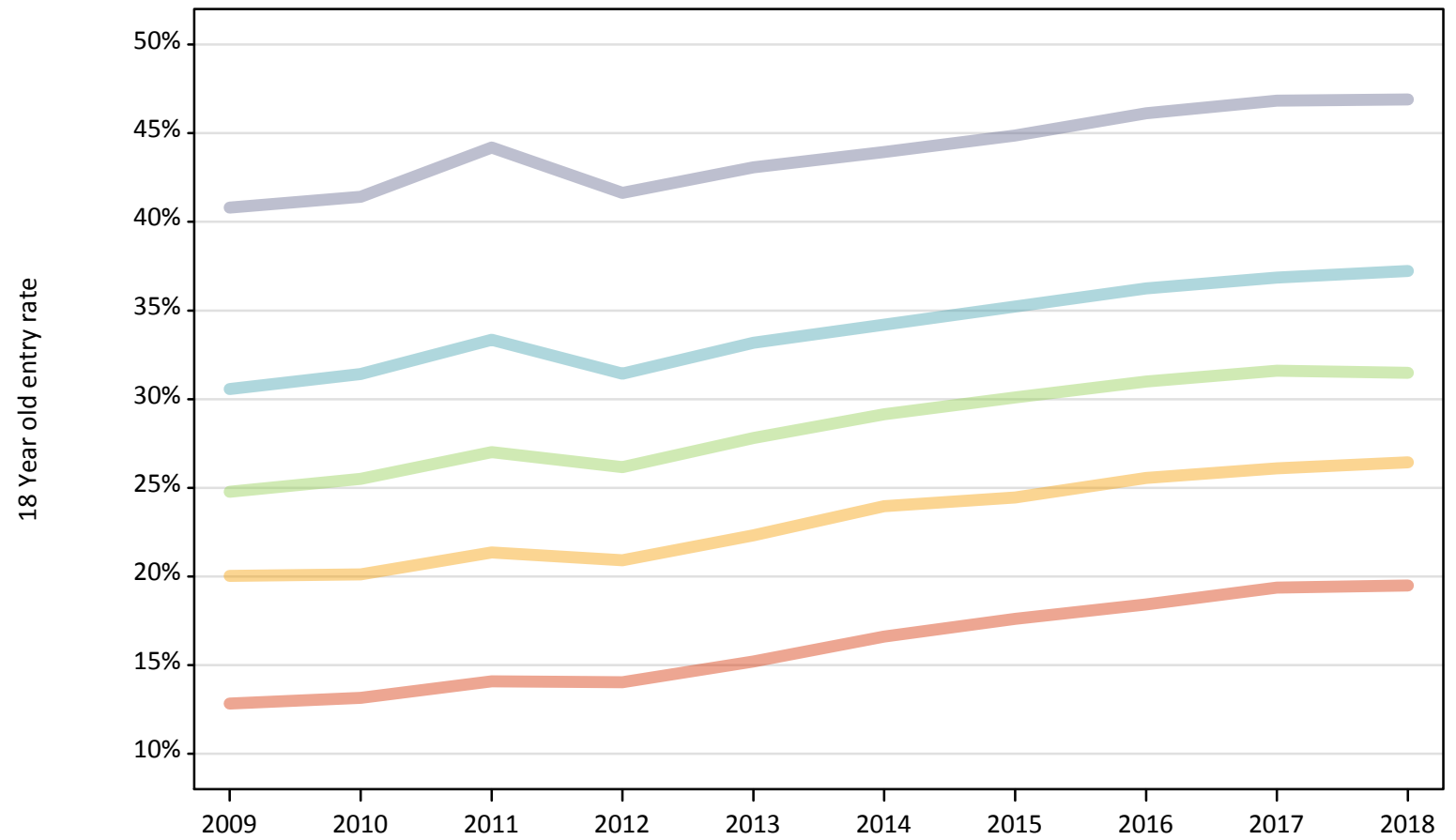
Applicant Status	POLAR4	2009	2010	2011	2012	2013	2014	2015	2016	2017	2018
Placed	Quintile 1	-25%	-25%	-21%	-22%	-17%	-10%	-4%	-3%	0%	-2%
	Quintile 2	-16%	-16%	-14%	-15%	-12%	-6%	-2%	-0%	0%	-1%
	Quintile 3	-15%	-14%	-11%	-14%	-10%	-7%	-1%	-1%	0%	-3%
	Quintile 4	-13%	-12%	-8%	-13%	-9%	-7%	-2%	-1%	0%	-1%
	Quintile 5	-11%	-11%	-7%	-11%	-9%	-8%	-3%	-1%	0%	-1%

Note: The percentage change is not recorded in the above table for groups with fewer than 10 placed applicants in that cycle or in the 2017 cycle.

P.4 Placed 18 year old applicants from England by POLAR4 quintile: 12 days after A level results day

Placed 18 year old applicants: entry rate

- Quintile 1
- Quintile 2
- Quintile 3
- Quintile 4
- Quintile 5



P.5 Placed 18 year old applicants from England by POLAR4 quintile: 12 days after A level results day

Placed 18 year old applicants: entry rate

Applicant Status	POLAR4	2009	2010	2011	2012	2013	2014	2015	2016	2017	2018
Placed	Quintile 1	12.8%	13.1%	14.1%	14.0%	15.2%	16.6%	17.6%	18.4%	19.4%	19.5%
	Quintile 2	20.0%	20.1%	21.3%	20.9%	22.3%	24.0%	24.4%	25.6%	26.1%	26.4%
	Quintile 3	24.8%	25.5%	27.0%	26.2%	27.8%	29.1%	30.1%	31.0%	31.6%	31.5%
	Quintile 4	30.6%	31.4%	33.3%	31.4%	33.2%	34.2%	35.2%	36.2%	36.8%	37.2%
	Quintile 5	40.8%	41.4%	44.2%	41.6%	43.1%	43.9%	44.9%	46.1%	46.8%	46.9%

P.6 Placed 18 year old applicants from England by POLAR4 quintile: 12 days after A level results day

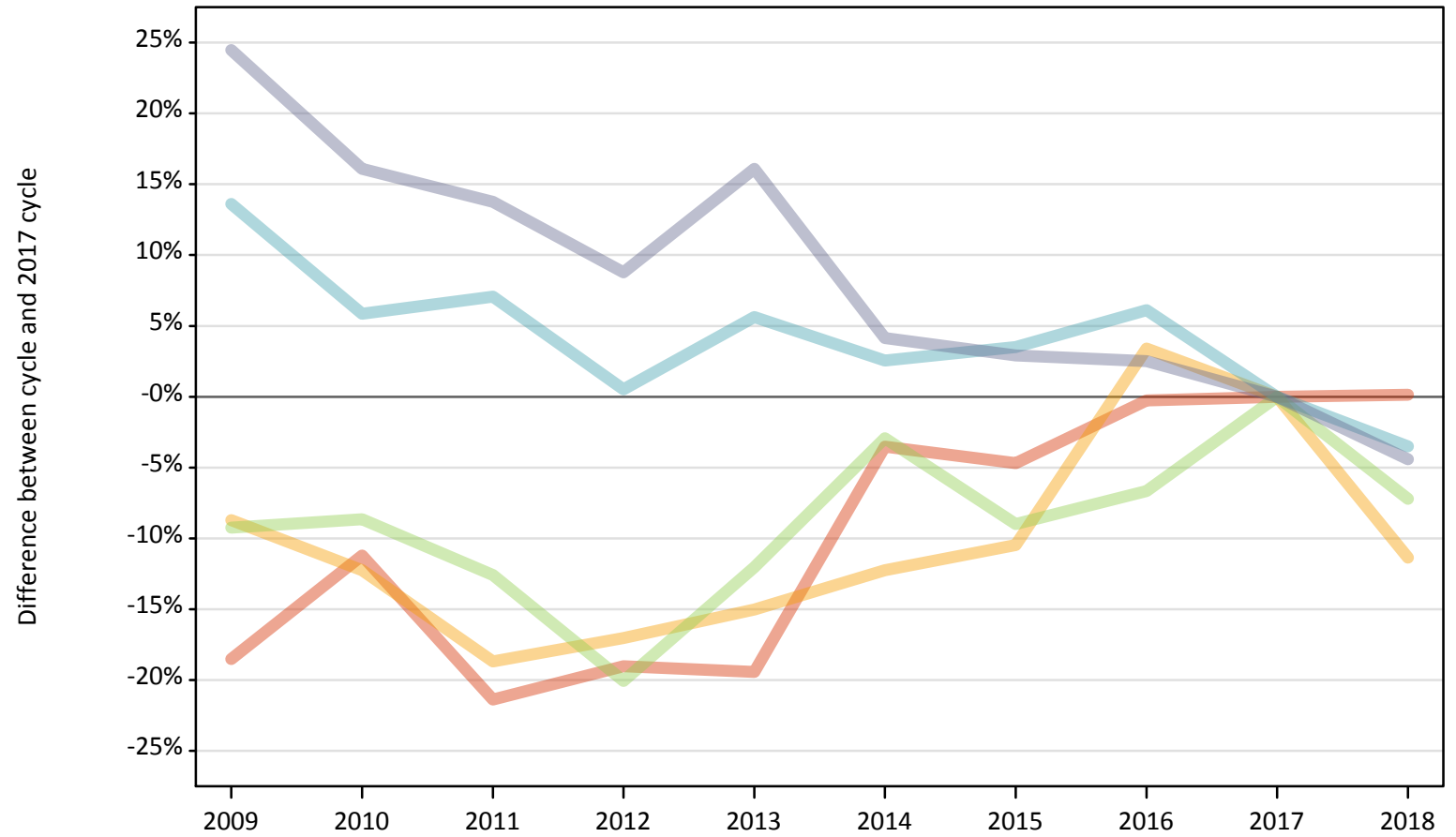
Placed 18 year old applicants: entry rate (indexed to 100 = Quintile 1)

Applicant Status	POLAR4	2009	2010	2011	2012	2013	2014	2015	2016	2017	2018
Placed	Quintile 1	100	100	100	100	100	100	100	100	100	100
	Quintile 2	156	153	152	149	147	144	139	139	135	136
	Quintile 3	193	194	192	186	183	175	171	168	163	161
	Quintile 4	238	239	237	224	218	206	200	197	190	191
	Quintile 5	318	315	314	297	283	265	255	250	242	241

P.7 Placed 18 year old applicants from Northern Ireland by POLAR4 quintile: 12 days after A level results day

Placed 18 year old applicants: change relative to 2017 cycle totals

- Quintile 1
- Quintile 2
- Quintile 3
- Quintile 4
- Quintile 5



Note: The percentage change is not plotted in the above chart for groups with fewer than 30 placed applicants in any one cycle.

P.8 Placed 18 year old applicants from Northern Ireland by POLAR4 quintile: 12 days after A level results day

Applicant Status	POLAR4	2009	2010	2011	2012	2013	2014	2015	2016	2017	2018
Placed	Quintile 1	630	680	600	620	620	740	730	770	770	770
	Quintile 2	720	700	640	660	670	700	710	820	790	700
	Quintile 3	1,330	1,340	1,290	1,180	1,290	1,430	1,340	1,370	1,470	1,360
	Quintile 4	2,360	2,200	2,230	2,090	2,200	2,130	2,150	2,210	2,080	2,010
	Quintile 5	4,150	3,870	3,800	3,630	3,870	3,480	3,430	3,420	3,340	3,190

P.9 Placed 18 year old applicants from Northern Ireland by POLAR4 quintile: 12 days after A level results day

Placed 18 year old applicants: change relative to 2017 cycle totals

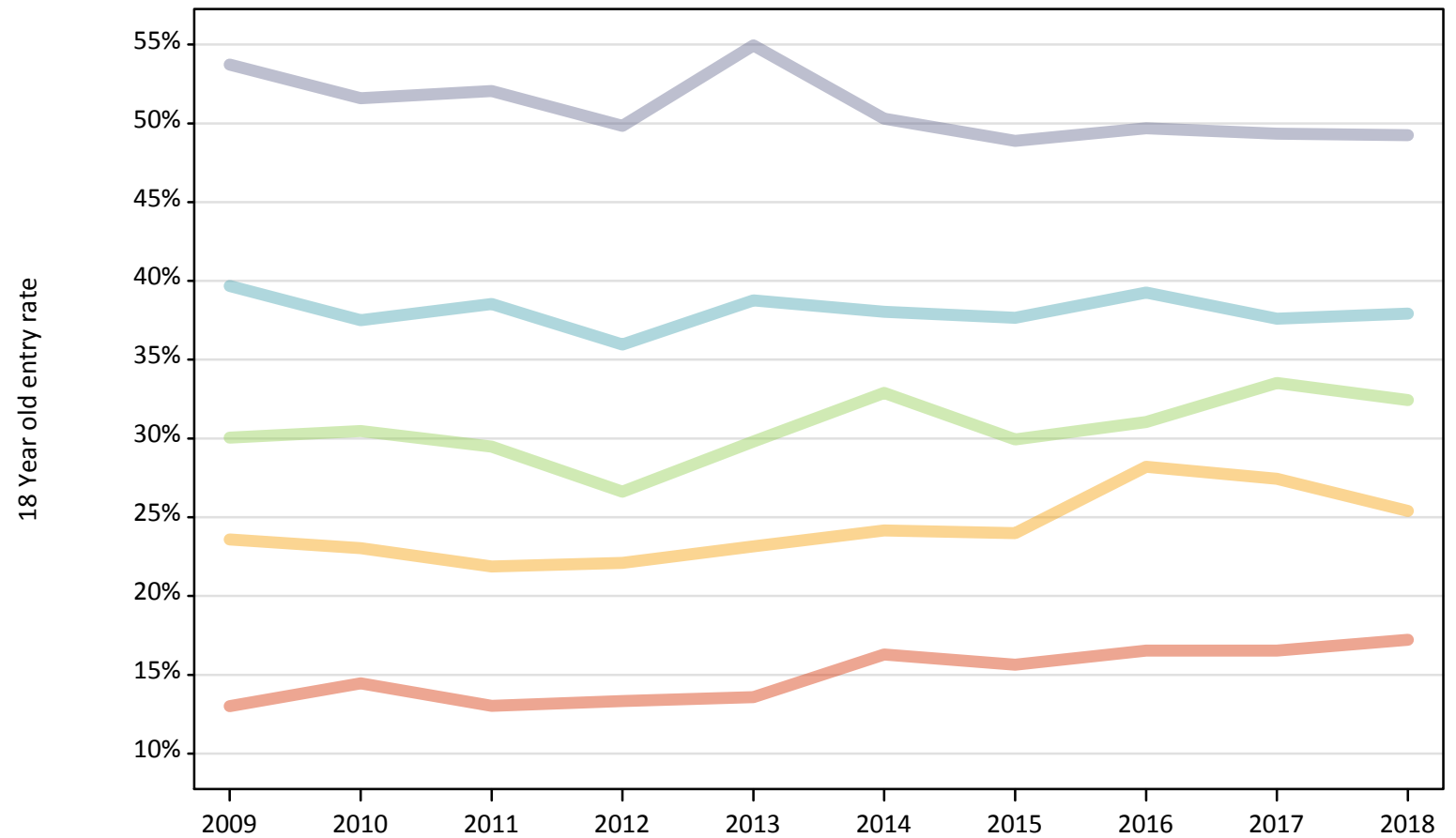
Applicant Status	POLAR4	2009	2010	2011	2012	2013	2014	2015	2016	2017	2018
Placed	Quintile 1	-19%	-11%	-21%	-19%	-19%	-4%	-5%	-0%	0%	0%
	Quintile 2	-9%	-12%	-19%	-17%	-15%	-12%	-10%	3%	0%	-11%
	Quintile 3	-9%	-9%	-13%	-20%	-12%	-3%	-9%	-7%	0%	-7%
	Quintile 4	14%	6%	7%	1%	6%	3%	4%	6%	0%	-4%
	Quintile 5	24%	16%	14%	9%	16%	4%	3%	3%	0%	-4%

Note: The percentage change is not recorded in the above table for groups with fewer than 10 placed applicants in that cycle or in the 2017 cycle.

P.10 Placed 18 year old applicants from Northern Ireland by POLAR4 quintile: 12 days after A level results day

Placed 18 year old applicants: entry rate

- Quintile 1
- Quintile 2
- Quintile 3
- Quintile 4
- Quintile 5



P.11 Placed 18 year old applicants from Northern Ireland by POLAR4 quintile: 12 days after A level results day

Placed 18 year old applicants: entry rate

Applicant Status	POLAR4	2009	2010	2011	2012	2013	2014	2015	2016	2017	2018
Placed	Quintile 1	13.0%	14.5%	13.0%	13.3%	13.6%	16.3%	15.6%	16.5%	16.5%	17.2%
	Quintile 2	23.6%	23.0%	21.9%	22.1%	23.2%	24.2%	24.0%	28.2%	27.4%	25.4%
	Quintile 3	30.1%	30.5%	29.5%	26.6%	29.8%	32.9%	29.9%	31.0%	33.5%	32.4%
	Quintile 4	39.7%	37.5%	38.5%	36.0%	38.8%	38.0%	37.7%	39.3%	37.6%	37.9%
	Quintile 5	53.7%	51.6%	52.0%	49.8%	54.9%	50.3%	48.9%	49.7%	49.3%	49.3%

P.12 Placed 18 year old applicants from Northern Ireland by POLAR4 quintile: 12 days after A level results day

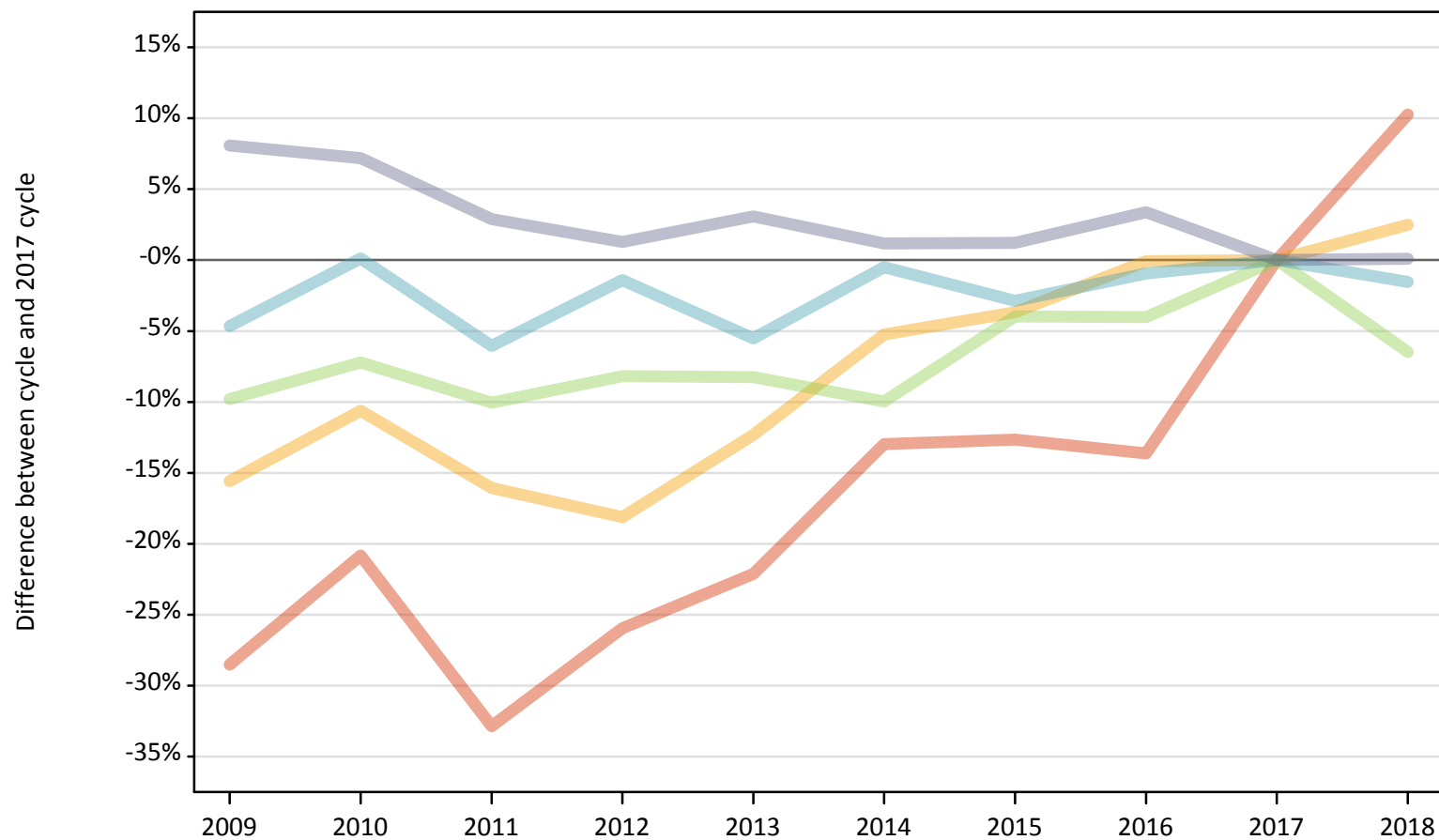
Placed 18 year old applicants: entry rate (indexed to 100 = Quintile 1)

Applicant Status	POLAR4	2009	2010	2011	2012	2013	2014	2015	2016	2017	2018
Placed	Quintile 1	100	100	100	100	100	100	100	100	100	100
	Quintile 2	181	159	168	166	171	148	153	170	166	147
	Quintile 3	231	211	226	199	220	202	191	188	203	188
	Quintile 4	305	259	296	270	286	233	241	237	227	220
	Quintile 5	413	357	400	374	405	309	312	300	298	286

P.13 Placed 18 year old applicants from Scotland by POLAR4 quintile: 12 days after A level results day

Placed 18 year old applicants: change relative to 2017 cycle totals

- Quintile 1
- Quintile 2
- Quintile 3
- Quintile 4
- Quintile 5



Note: The percentage change is not plotted in the above chart for groups with fewer than 30 placed applicants in any one cycle.

P.14 Placed 18 year old applicants from Scotland by POLAR4 quintile: 12 days after A level results day

Applicant Status	POLAR4	2009	2010	2011	2012	2013	2014	2015	2016	2017	2018
Placed	Quintile 1	450	490	420	460	490	540	550	540	620	690
	Quintile 2	1,190	1,260	1,190	1,160	1,240	1,340	1,360	1,410	1,410	1,450
	Quintile 3	2,160	2,220	2,160	2,200	2,200	2,160	2,300	2,300	2,400	2,240
	Quintile 4	3,240	3,410	3,200	3,350	3,210	3,380	3,300	3,370	3,400	3,350
	Quintile 5	7,320	7,260	6,960	6,860	6,980	6,850	6,850	7,000	6,770	6,780

P.15 Placed 18 year old applicants from Scotland by POLAR4 quintile: 12 days after A level results day

Placed 18 year old applicants: change relative to 2017 cycle totals

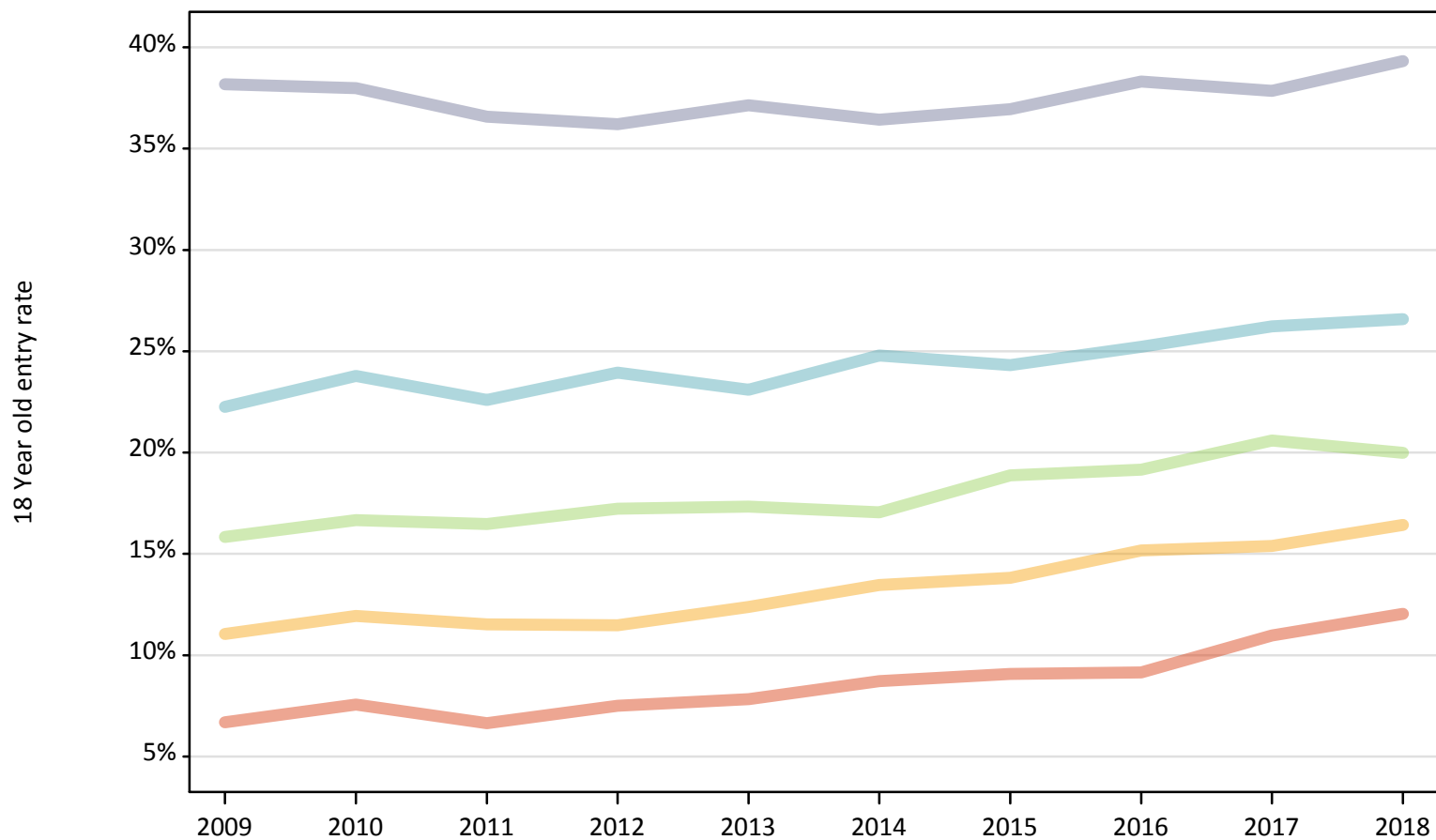
Applicant Status	POLAR4	2009	2010	2011	2012	2013	2014	2015	2016	2017	2018
Placed	Quintile 1	-29%	-21%	-33%	-26%	-22%	-13%	-13%	-14%	0%	10%
	Quintile 2	-16%	-11%	-16%	-18%	-12%	-5%	-4%	-0%	0%	2%
	Quintile 3	-10%	-7%	-10%	-8%	-8%	-10%	-4%	-4%	0%	-6%
	Quintile 4	-5%	0%	-6%	-1%	-6%	-0%	-3%	-1%	0%	-2%
	Quintile 5	8%	7%	3%	1%	3%	1%	1%	3%	0%	0%

Note: The percentage change is not recorded in the above table for groups with fewer than 10 placed applicants in that cycle or in the 2017 cycle.

P.16 Placed 18 year old applicants from Scotland by POLAR4 quintile: 12 days after A level results day

Placed 18 year old applicants: entry rate

- Quintile 1
- Quintile 2
- Quintile 3
- Quintile 4
- Quintile 5



P.17 Placed 18 year old applicants from Scotland by POLAR4 quintile: 12 days after A level results day

Placed 18 year old applicants: entry rate

Applicant Status	POLAR4	2009	2010	2011	2012	2013	2014	2015	2016	2017	2018
Placed	Quintile 1	6.7%	7.6%	6.6%	7.5%	7.8%	8.7%	9.1%	9.1%	11.0%	12.0%
	Quintile 2	11.0%	11.9%	11.5%	11.5%	12.4%	13.5%	13.8%	15.2%	15.4%	16.4%
	Quintile 3	15.8%	16.7%	16.5%	17.2%	17.3%	17.1%	18.9%	19.2%	20.6%	20.0%
	Quintile 4	22.2%	23.8%	22.6%	24.0%	23.1%	24.8%	24.3%	25.2%	26.2%	26.6%
	Quintile 5	38.2%	38.0%	36.6%	36.2%	37.1%	36.4%	36.9%	38.3%	37.9%	39.3%

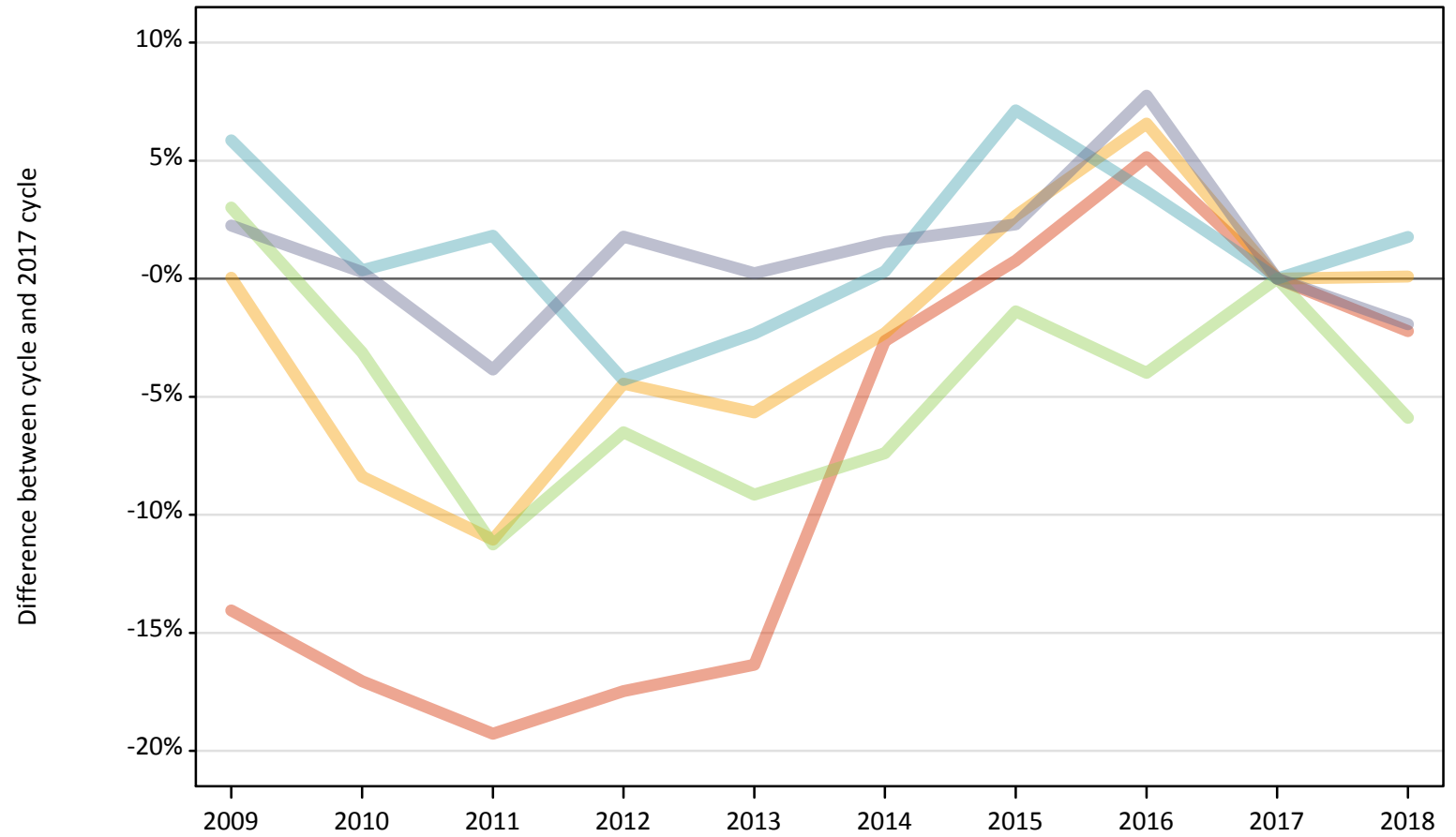
P.18 Placed 18 year old applicants from Scotland by POLAR4 quintile: 12 days after A level results day

Placed 18 year old applicants: entry rate (indexed to 100 = Quintile 1)

Applicant Status	POLAR4	2009	2010	2011	2012	2013	2014	2015	2016	2017	2018
Placed	Quintile 1	100	100	100	100	100	100	100	100	100	100
	Quintile 2	165	158	173	153	158	154	152	166	140	136
	Quintile 3	237	221	248	230	221	196	208	209	188	166
	Quintile 4	333	315	340	319	295	284	268	276	239	221
	Quintile 5	571	502	550	483	474	418	407	419	345	326

P.19 Placed 18 year old applicants from Wales by POLAR4 quintile: 12 days after A level results day
Placed 18 year old applicants: change relative to 2017 cycle totals

- Quintile 1
- Quintile 2
- Quintile 3
- Quintile 4
- Quintile 5



Note: The percentage change is not plotted in the above chart for groups with fewer than 30 placed applicants in any one cycle.

P.20 Placed 18 year old applicants from Wales by POLAR4 quintile: 12 days after A level results day

Applicant Status	POLAR4	2009	2010	2011	2012	2013	2014	2015	2016	2017	2018
Placed	Quintile 1	1,240	1,190	1,160	1,190	1,200	1,400	1,450	1,510	1,440	1,410
	Quintile 2	2,210	2,020	1,960	2,110	2,080	2,160	2,270	2,350	2,210	2,210
	Quintile 3	2,530	2,380	2,180	2,300	2,240	2,280	2,430	2,360	2,460	2,320
	Quintile 4	2,090	1,990	2,010	1,890	1,930	1,980	2,120	2,050	1,980	2,010
	Quintile 5	2,180	2,140	2,050	2,170	2,130	2,160	2,180	2,290	2,130	2,090

P.21 Placed 18 year old applicants from Wales by POLAR4 quintile: 12 days after A level results day

Placed 18 year old applicants: change relative to 2017 cycle totals

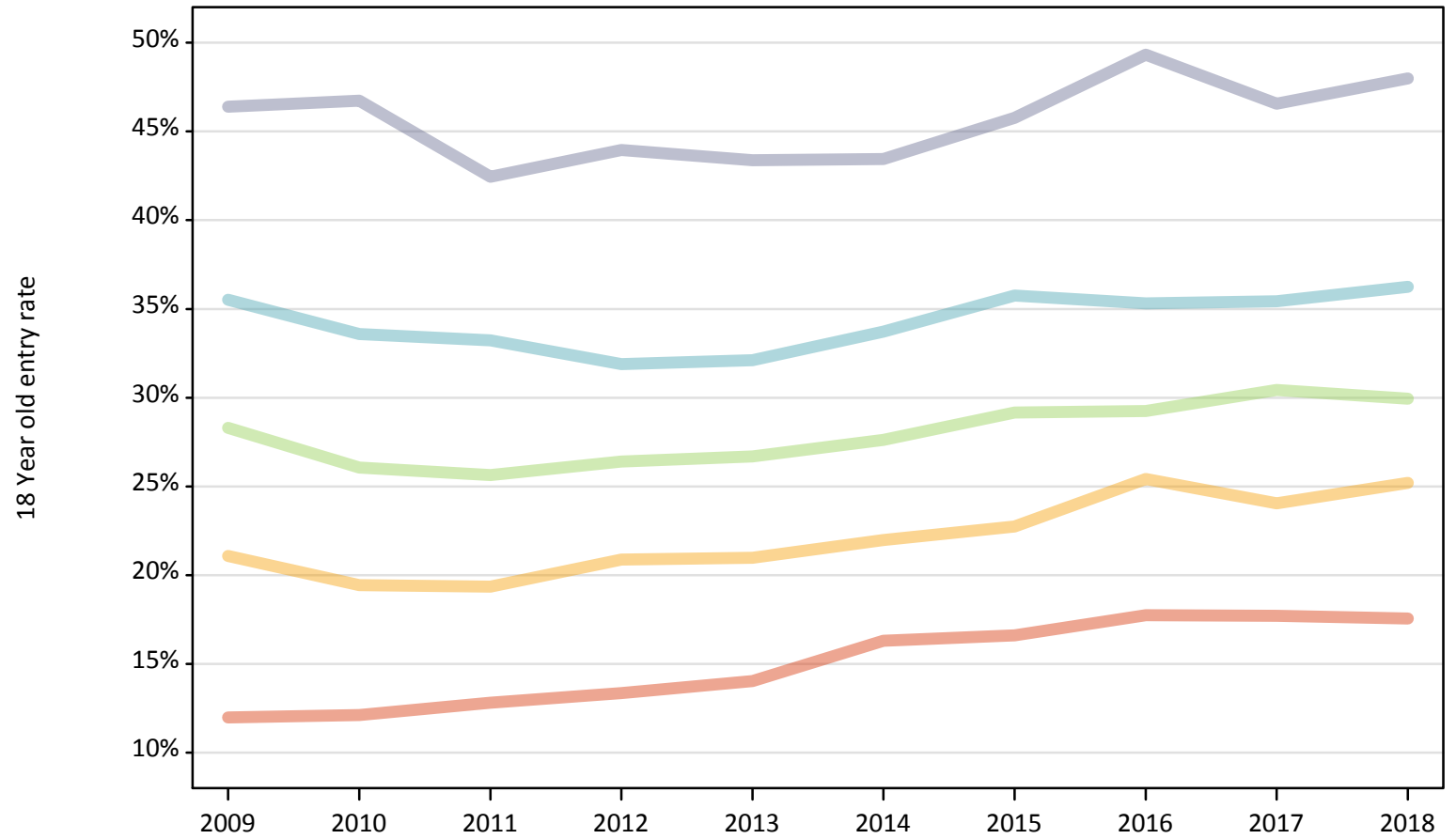
Applicant Status	POLAR4	2009	2010	2011	2012	2013	2014	2015	2016	2017	2018
Placed	Quintile 1	-14%	-17%	-19%	-17%	-16%	-3%	1%	5%	0%	-2%
	Quintile 2	0%	-8%	-11%	-4%	-6%	-2%	3%	7%	0%	0%
	Quintile 3	3%	-3%	-11%	-7%	-9%	-7%	-1%	-4%	0%	-6%
	Quintile 4	6%	0%	2%	-4%	-2%	0%	7%	4%	0%	2%
	Quintile 5	2%	0%	-4%	2%	0%	2%	2%	8%	0%	-2%

Note: The percentage change is not recorded in the above table for groups with fewer than 10 placed applicants in that cycle or in the 2017 cycle.

P.22 Placed 18 year old applicants from Wales by POLAR4 quintile: 12 days after A level results day

Placed 18 year old applicants: entry rate

- Quintile 1
- Quintile 2
- Quintile 3
- Quintile 4
- Quintile 5



P.23 Placed 18 year old applicants from Wales by POLAR4 quintile: 12 days after A level results day

Placed 18 year old applicants: entry rate

Applicant Status	POLAR4	2009	2010	2011	2012	2013	2014	2015	2016	2017	2018
Placed	Quintile 1	12.0%	12.1%	12.8%	13.4%	14.0%	16.3%	16.6%	17.7%	17.7%	17.6%
	Quintile 2	21.1%	19.4%	19.4%	20.9%	21.0%	22.0%	22.7%	25.4%	24.1%	25.2%
	Quintile 3	28.3%	26.1%	25.6%	26.4%	26.7%	27.6%	29.2%	29.2%	30.4%	29.9%
	Quintile 4	35.5%	33.6%	33.2%	31.9%	32.1%	33.7%	35.8%	35.3%	35.4%	36.2%
	Quintile 5	46.4%	46.7%	42.4%	44.0%	43.4%	43.4%	45.8%	49.3%	46.6%	48.0%

P.24 Placed 18 year old applicants from Wales by POLAR4 quintile: 12 days after A level results day

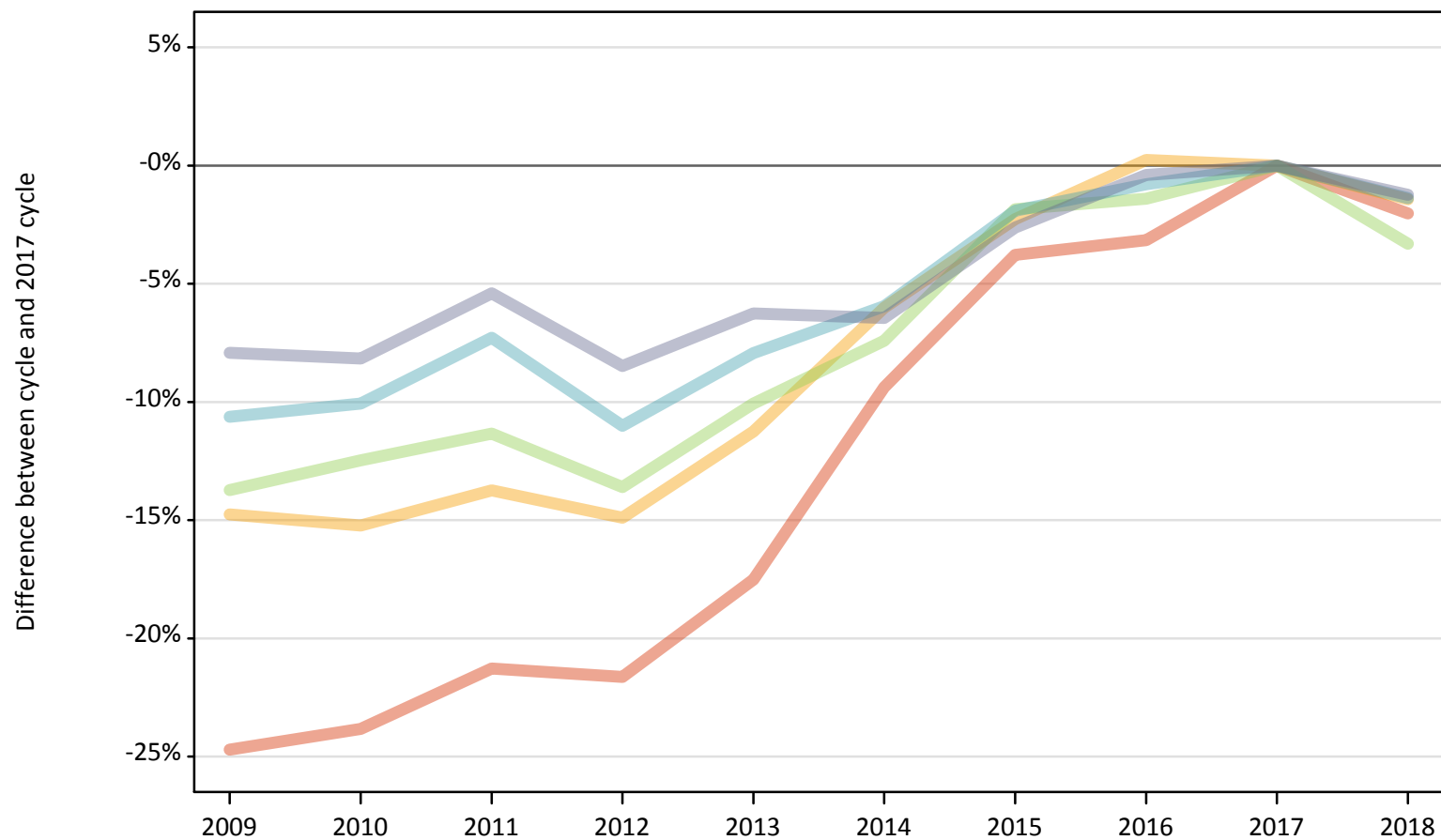
Placed 18 year old applicants: entry rate (indexed to 100 = Quintile 1)

Applicant Status	POLAR4	2009	2010	2011	2012	2013	2014	2015	2016	2017	2018
Placed	Quintile 1	100	100	100	100	100	100	100	100	100	100
	Quintile 2	176	160	151	156	149	135	137	143	136	144
	Quintile 3	236	215	200	198	190	169	176	165	172	171
	Quintile 4	296	277	259	239	229	207	215	199	200	206
	Quintile 5	387	385	331	329	309	266	276	278	263	273

P.25 Placed 18 year old applicants from the UK by POLAR4 quintile: 12 days after A level results day

Placed 18 year old applicants: change relative to 2017 cycle totals

- Quintile 1
- Quintile 2
- Quintile 3
- Quintile 4
- Quintile 5



Note: The percentage change is not plotted in the above chart for groups with fewer than 30 placed applicants in any one cycle.

P.26 Placed 18 year old applicants from the UK by POLAR4 quintile: 12 days after A level results day

Applicant Status	POLAR4	2009	2010	2011	2012	2013	2014	2015	2016	2017	2018
Placed	Quintile 1	18,960	19,180	19,820	19,730	20,770	22,820	24,230	24,390	25,180	24,670
	Quintile 2	30,060	29,890	30,420	30,010	31,300	33,140	34,460	35,350	35,260	34,760
	Quintile 3	38,400	38,970	39,470	38,460	40,030	41,220	43,690	43,890	44,520	43,040
	Quintile 4	48,510	48,820	50,330	48,300	49,970	51,050	53,240	53,850	54,280	53,530
	Quintile 5	72,630	72,450	74,620	72,190	73,950	73,790	76,820	78,560	78,880	77,900

P.27 Placed 18 year old applicants from the UK by POLAR4 quintile: 12 days after A level results day

Placed 18 year old applicants: change relative to 2017 cycle totals

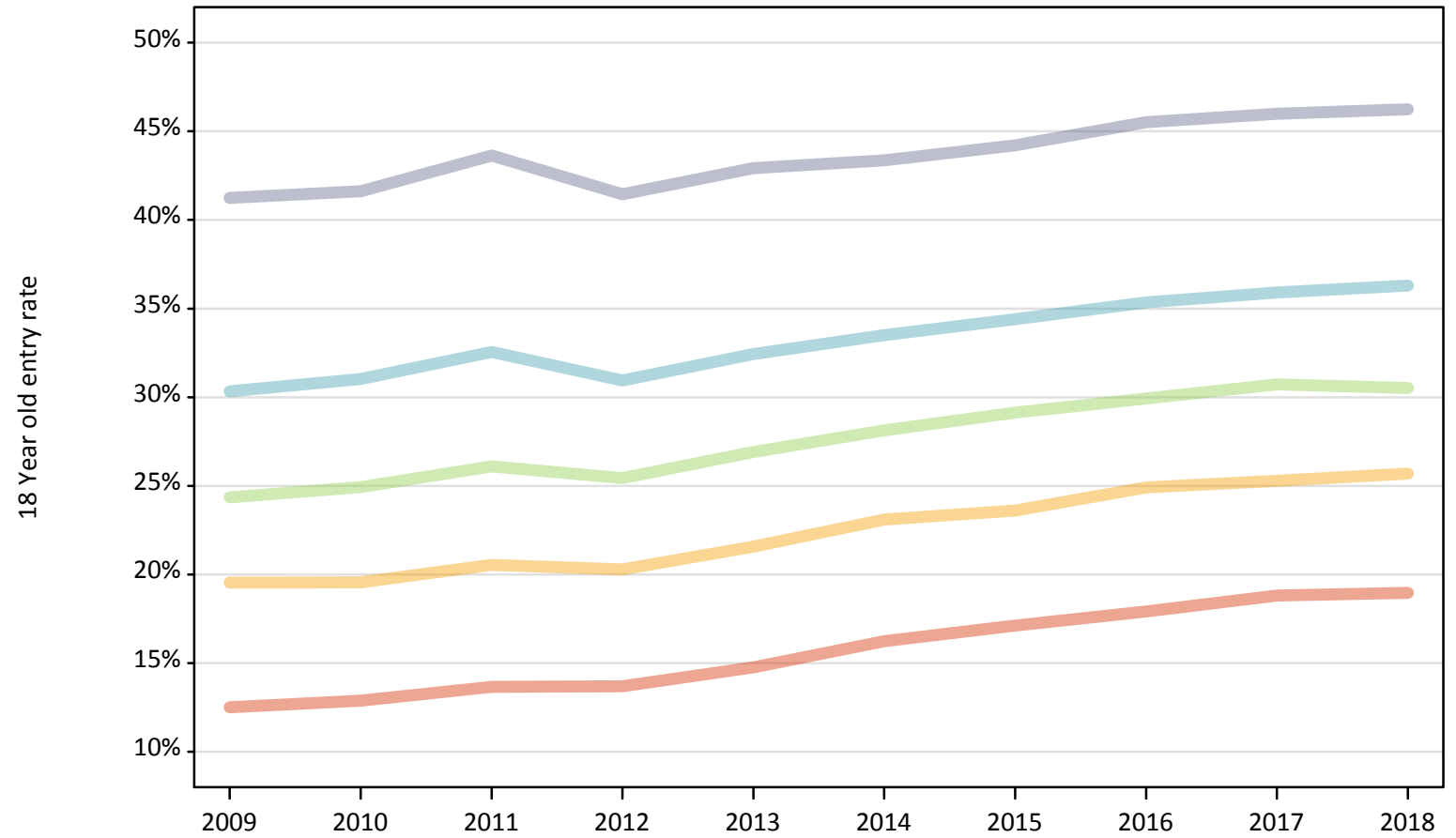
Applicant Status	POLAR4	2009	2010	2011	2012	2013	2014	2015	2016	2017	2018
Placed	Quintile 1	-25%	-24%	-21%	-22%	-18%	-9%	-4%	-3%	0%	-2%
	Quintile 2	-15%	-15%	-14%	-15%	-11%	-6%	-2%	0%	0%	-1%
	Quintile 3	-14%	-12%	-11%	-14%	-10%	-7%	-2%	-1%	0%	-3%
	Quintile 4	-11%	-10%	-7%	-11%	-8%	-6%	-2%	-1%	0%	-1%
	Quintile 5	-8%	-8%	-5%	-8%	-6%	-6%	-3%	-0%	0%	-1%

Note: The percentage change is not recorded in the above table for groups with fewer than 10 placed applicants in that cycle or in the 2017 cycle.

P.28 Placed 18 year old applicants from the UK by POLAR4 quintile: 12 days after A level results day

Placed 18 year old applicants: entry rate

- Quintile 1
- Quintile 2
- Quintile 3
- Quintile 4
- Quintile 5



P.29 Placed 18 year old applicants from the UK by POLAR4 quintile: 12 days after A level results day

Placed 18 year old applicants: entry rate

Applicant Status	POLAR4	2009	2010	2011	2012	2013	2014	2015	2016	2017	2018
Placed	Quintile 1	12.5%	12.9%	13.7%	13.7%	14.8%	16.2%	17.1%	17.9%	18.8%	19.0%
	Quintile 2	19.5%	19.6%	20.5%	20.3%	21.6%	23.1%	23.6%	24.9%	25.3%	25.7%
	Quintile 3	24.3%	24.9%	26.1%	25.4%	26.9%	28.1%	29.1%	29.9%	30.7%	30.5%
	Quintile 4	30.3%	31.0%	32.6%	30.9%	32.4%	33.5%	34.4%	35.4%	35.9%	36.3%
	Quintile 5	41.2%	41.6%	43.6%	41.5%	42.9%	43.4%	44.2%	45.5%	46.0%	46.2%

P.30 Placed 18 year old applicants from the UK by POLAR4 quintile: 12 days after A level results day

Placed 18 year old applicants: entry rate (indexed to 100 = Quintile 1)

Applicant Status	POLAR4	2009	2010	2011	2012	2013	2014	2015	2016	2017	2018
Placed	Quintile 1	100	100	100	100	100	100	100	100	100	100
	Quintile 2	156	152	150	148	146	142	138	139	134	135
	Quintile 3	195	194	191	186	182	173	170	167	163	161
	Quintile 4	242	241	238	226	220	206	201	197	191	191
	Quintile 5	330	323	320	303	291	267	258	254	244	244