

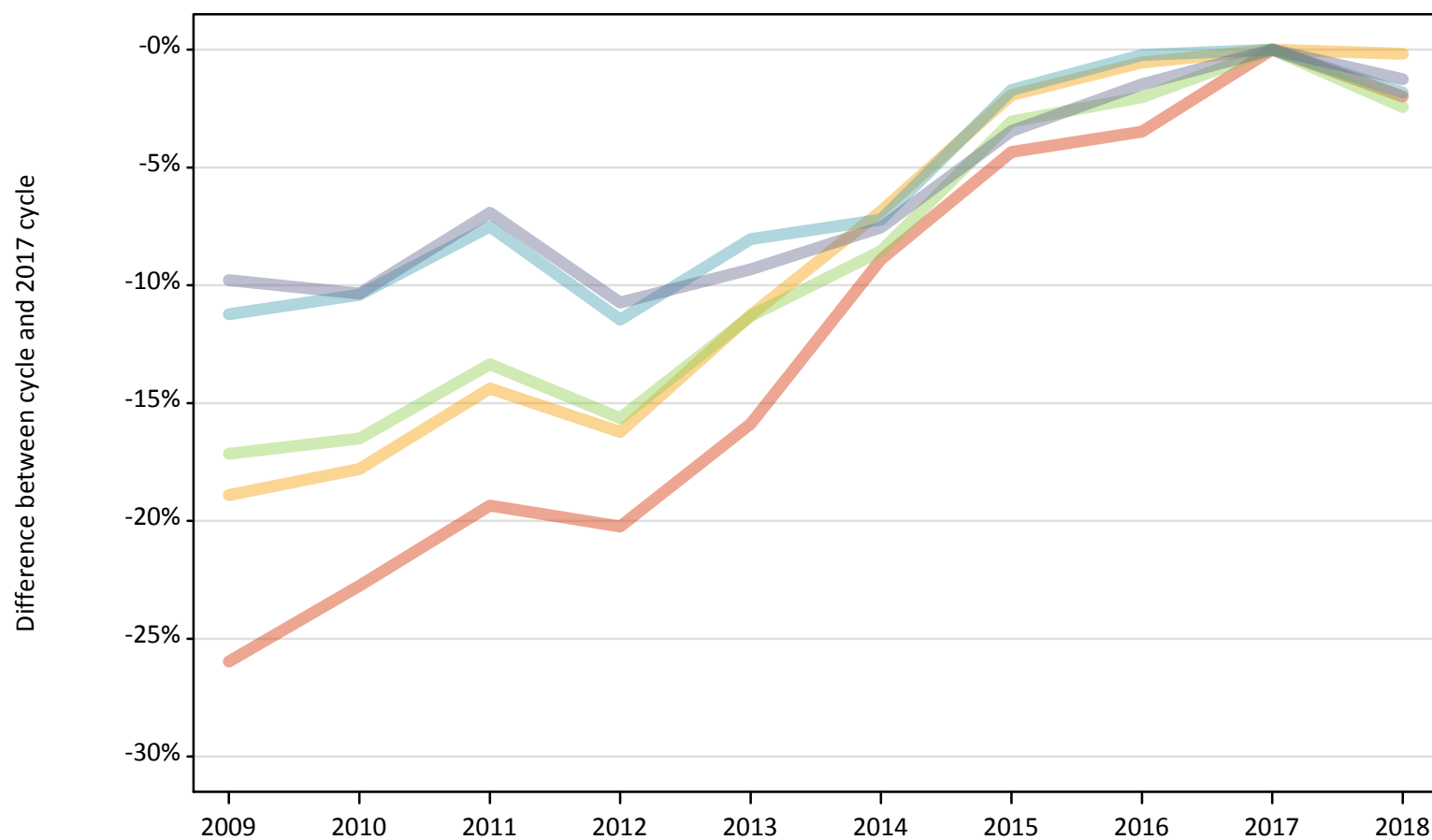
# Daily Clearing Analysis: POLAR3

Analysis at 00:05 on Tuesday 28 August 2018 (12 days after A level results day)

P.1 Placed 18 year old applicants from England by POLAR3 quintile: 12 days after A level results day

Placed 18 year old applicants: change relative to 2017 cycle totals

- Quintile 1
- Quintile 2
- Quintile 3
- Quintile 4
- Quintile 5



Note: The percentage change is not plotted in the above chart for groups with fewer than 30 placed applicants in any one cycle.

### P.2 Placed 18 year old applicants from England by POLAR3 quintile: 12 days after A level results day

Applicant Status	POLAR3	2009	2010	2011	2012	2013	2014	2015	2016	2017	2018
Placed	Quintile 1	16,990	17,730	18,510	18,310	19,310	20,910	21,960	22,150	22,950	22,490
	Quintile 2	25,620	25,970	27,050	26,470	28,030	29,430	30,980	31,420	31,600	31,540
	Quintile 3	33,740	34,000	35,290	34,350	36,120	37,240	39,480	39,900	40,720	39,730
	Quintile 4	41,680	42,070	43,430	41,580	43,180	43,570	46,150	46,850	46,960	46,100
	Quintile 5	56,730	56,380	58,530	56,140	57,020	58,140	60,710	61,960	62,890	62,090

### P.3 Placed 18 year old applicants from England by POLAR3 quintile: 12 days after A level results day

Placed 18 year old applicants: change relative to 2017 cycle totals

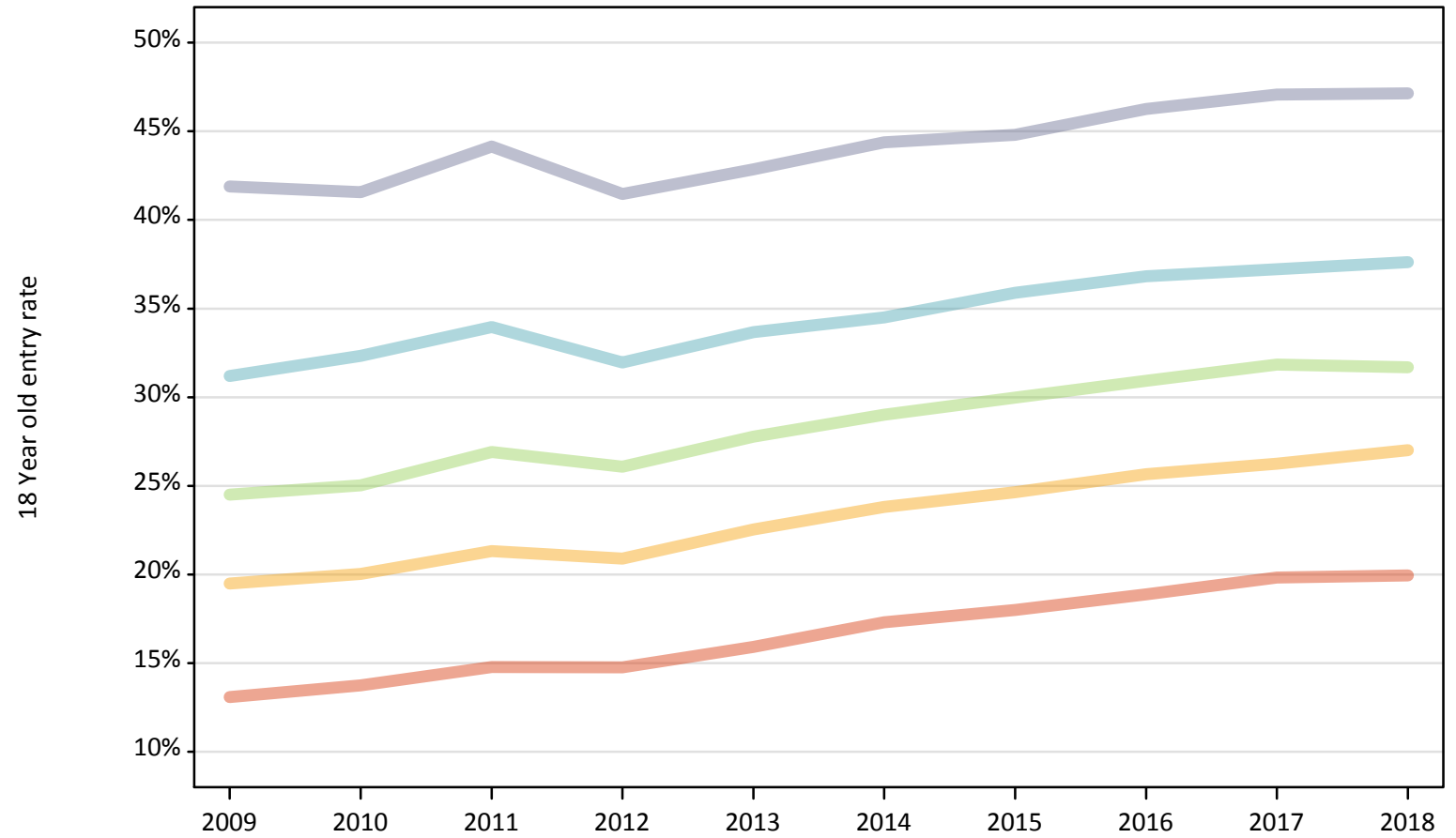
Applicant Status	POLAR3	2009	2010	2011	2012	2013	2014	2015	2016	2017	2018
Placed	Quintile 1	-26%	-23%	-19%	-20%	-16%	-9%	-4%	-3%	0%	-2%
	Quintile 2	-19%	-18%	-14%	-16%	-11%	-7%	-2%	-1%	0%	-0%
	Quintile 3	-17%	-17%	-13%	-16%	-11%	-9%	-3%	-2%	0%	-2%
	Quintile 4	-11%	-10%	-8%	-11%	-8%	-7%	-2%	-0%	0%	-2%
	Quintile 5	-10%	-10%	-7%	-11%	-9%	-8%	-3%	-1%	0%	-1%

Note: The percentage change is not recorded in the above table for groups with fewer than 10 placed applicants in that cycle or in the 2017 cycle.

## P.4 Placed 18 year old applicants from England by POLAR3 quintile: 12 days after A level results day

Placed 18 year old applicants: entry rate

- Quintile 1
- Quintile 2
- Quintile 3
- Quintile 4
- Quintile 5



**P.5 Placed 18 year old applicants from England by POLAR3 quintile: 12 days after A level results day**

Placed 18 year old applicants: entry rate

Applicant Status	POLAR3	2009	2010	2011	2012	2013	2014	2015	2016	2017	2018
Placed	Quintile 1	13.1%	13.7%	14.8%	14.8%	15.9%	17.3%	18.0%	18.9%	19.8%	19.9%
	Quintile 2	19.5%	20.0%	21.3%	20.9%	22.5%	23.8%	24.6%	25.7%	26.2%	27.0%
	Quintile 3	24.5%	25.0%	26.9%	26.1%	27.8%	29.0%	30.0%	30.9%	31.8%	31.7%
	Quintile 4	31.2%	32.3%	34.0%	32.0%	33.7%	34.5%	35.9%	36.8%	37.2%	37.6%
	Quintile 5	41.9%	41.6%	44.1%	41.5%	42.8%	44.4%	44.8%	46.3%	47.1%	47.1%

**P.6 Placed 18 year old applicants from England by POLAR3 quintile: 12 days after A level results day**

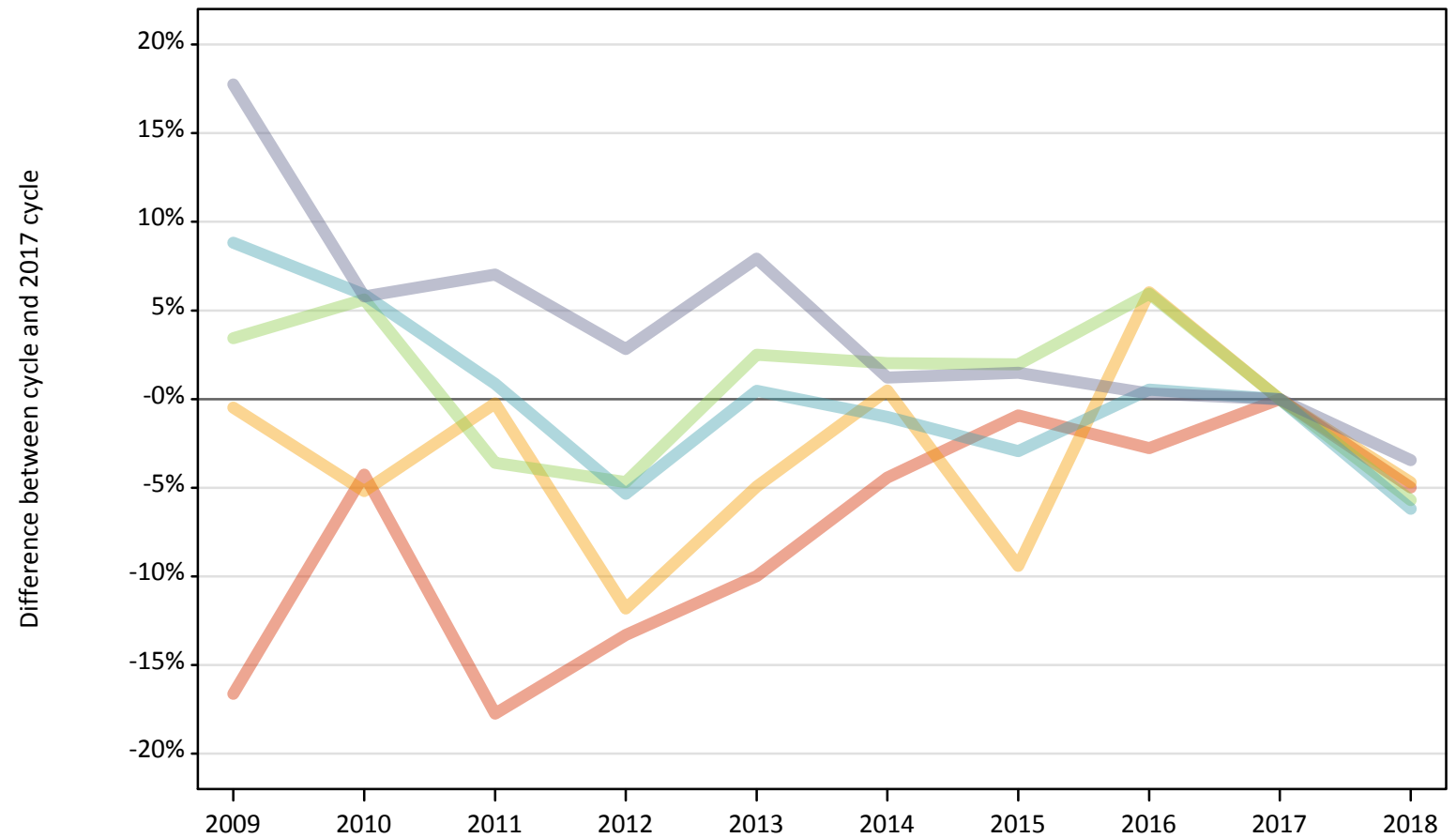
Placed 18 year old applicants: entry rate (indexed to 100 = Quintile 1)

Applicant Status	POLAR3	2009	2010	2011	2012	2013	2014	2015	2016	2017	2018
Placed	Quintile 1	100	100	100	100	100	100	100	100	100	100
	Quintile 2	149	146	144	142	142	138	137	136	132	135
	Quintile 3	187	182	182	177	174	168	167	164	161	159
	Quintile 4	239	235	230	217	212	199	199	195	188	189
	Quintile 5	320	302	299	281	269	256	249	245	237	236

## P.7 Placed 18 year old applicants from Northern Ireland by POLAR3 quintile: 12 days after A level results day

Placed 18 year old applicants: change relative to 2017 cycle totals

- Quintile 1
- Quintile 2
- Quintile 3
- Quintile 4
- Quintile 5



Note: The percentage change is not plotted in the above chart for groups with fewer than 30 placed applicants in any one cycle.

**P.8 Placed 18 year old applicants from Northern Ireland by POLAR3 quintile: 12 days after A level results day**

Applicant Status	POLAR3	2009	2010	2011	2012	2013	2014	2015	2016	2017	2018
Placed	Quintile 1	450	520	450	470	490	520	540	530	540	510
	Quintile 2	830	790	830	730	790	830	750	880	830	790
	Quintile 3	1,320	1,350	1,230	1,220	1,310	1,310	1,310	1,360	1,280	1,210
	Quintile 4	2,810	2,740	2,610	2,450	2,600	2,560	2,510	2,600	2,580	2,420
	Quintile 5	3,790	3,400	3,440	3,310	3,470	3,260	3,270	3,230	3,220	3,110

**P.9 Placed 18 year old applicants from Northern Ireland by POLAR3 quintile: 12 days after A level results day**

Placed 18 year old applicants: change relative to 2017 cycle totals

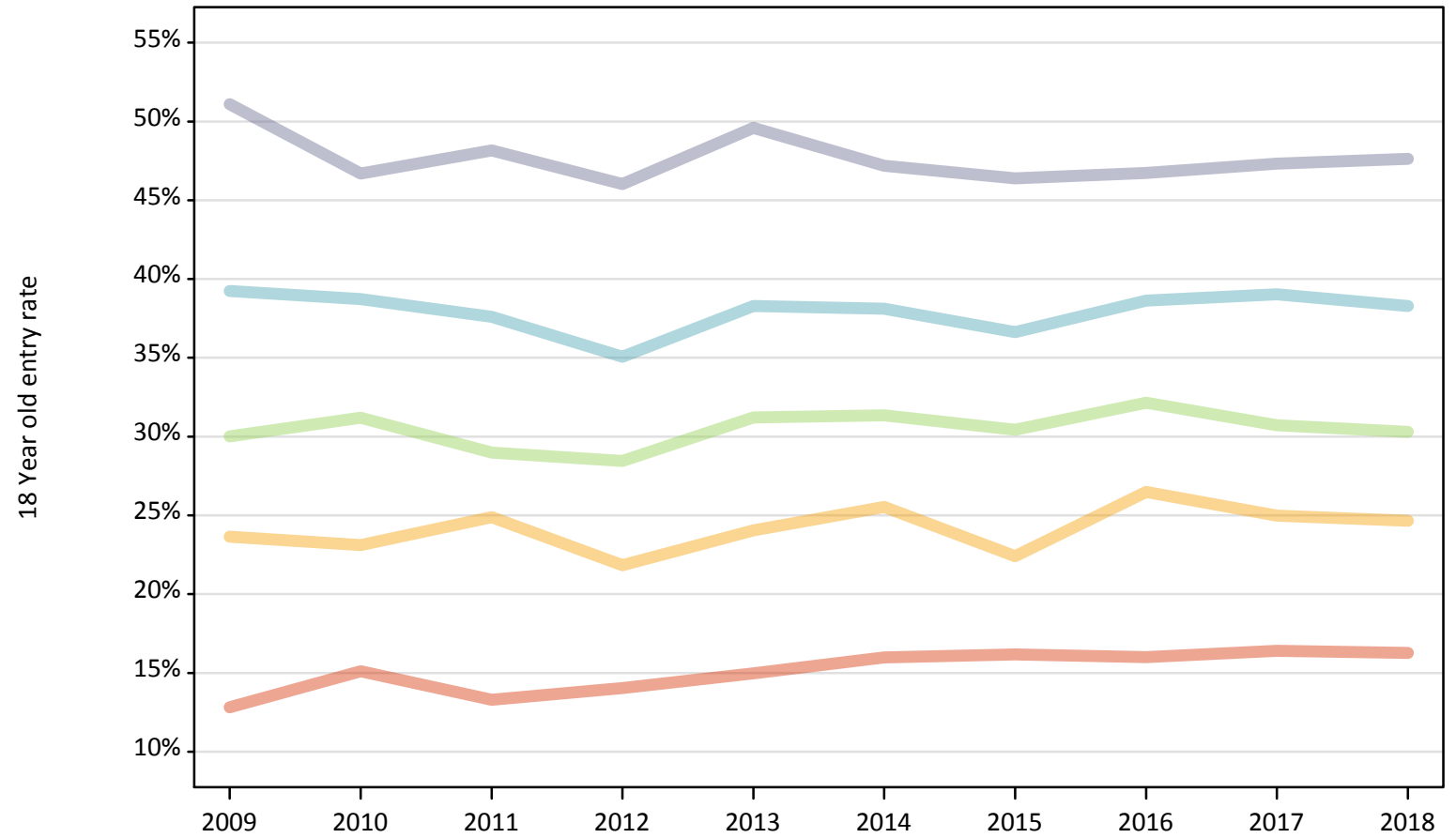
Applicant Status	POLAR3	2009	2010	2011	2012	2013	2014	2015	2016	2017	2018
Placed	Quintile 1	-17%	-4%	-18%	-13%	-10%	-4%	-1%	-3%	0%	-5%
	Quintile 2	-0%	-5%	-0%	-12%	-5%	0%	-9%	6%	0%	-5%
	Quintile 3	3%	6%	-4%	-5%	2%	2%	2%	6%	0%	-6%
	Quintile 4	9%	6%	1%	-5%	0%	-1%	-3%	1%	0%	-6%
	Quintile 5	18%	6%	7%	3%	8%	1%	1%	0%	0%	-3%

Note: The percentage change is not recorded in the above table for groups with fewer than 10 placed applicants in that cycle or in the 2017 cycle.

**P.10 Placed 18 year old applicants from Northern Ireland by POLAR3 quintile: 12 days after A level results day**

Placed 18 year old applicants: entry rate

- Quintile 1
- Quintile 2
- Quintile 3
- Quintile 4
- Quintile 5



**P.11 Placed 18 year old applicants from Northern Ireland by POLAR3 quintile: 12 days after A level results day**

Placed 18 year old applicants: entry rate

Applicant Status	POLAR3	2009	2010	2011	2012	2013	2014	2015	2016	2017	2018
Placed	Quintile 1	12.8%	15.1%	13.3%	14.0%	15.0%	16.0%	16.2%	16.0%	16.4%	16.3%
	Quintile 2	23.7%	23.1%	24.9%	21.8%	24.0%	25.5%	22.4%	26.5%	25.0%	24.6%
	Quintile 3	30.0%	31.2%	29.0%	28.5%	31.2%	31.3%	30.4%	32.1%	30.7%	30.3%
	Quintile 4	39.2%	38.7%	37.6%	35.1%	38.3%	38.1%	36.6%	38.6%	39.0%	38.3%
	Quintile 5	51.1%	46.7%	48.2%	46.0%	49.6%	47.2%	46.4%	46.7%	47.3%	47.6%

**P.12 Placed 18 year old applicants from Northern Ireland by POLAR3 quintile: 12 days after A level results day**

Placed 18 year old applicants: entry rate (indexed to 100 = Quintile 1)

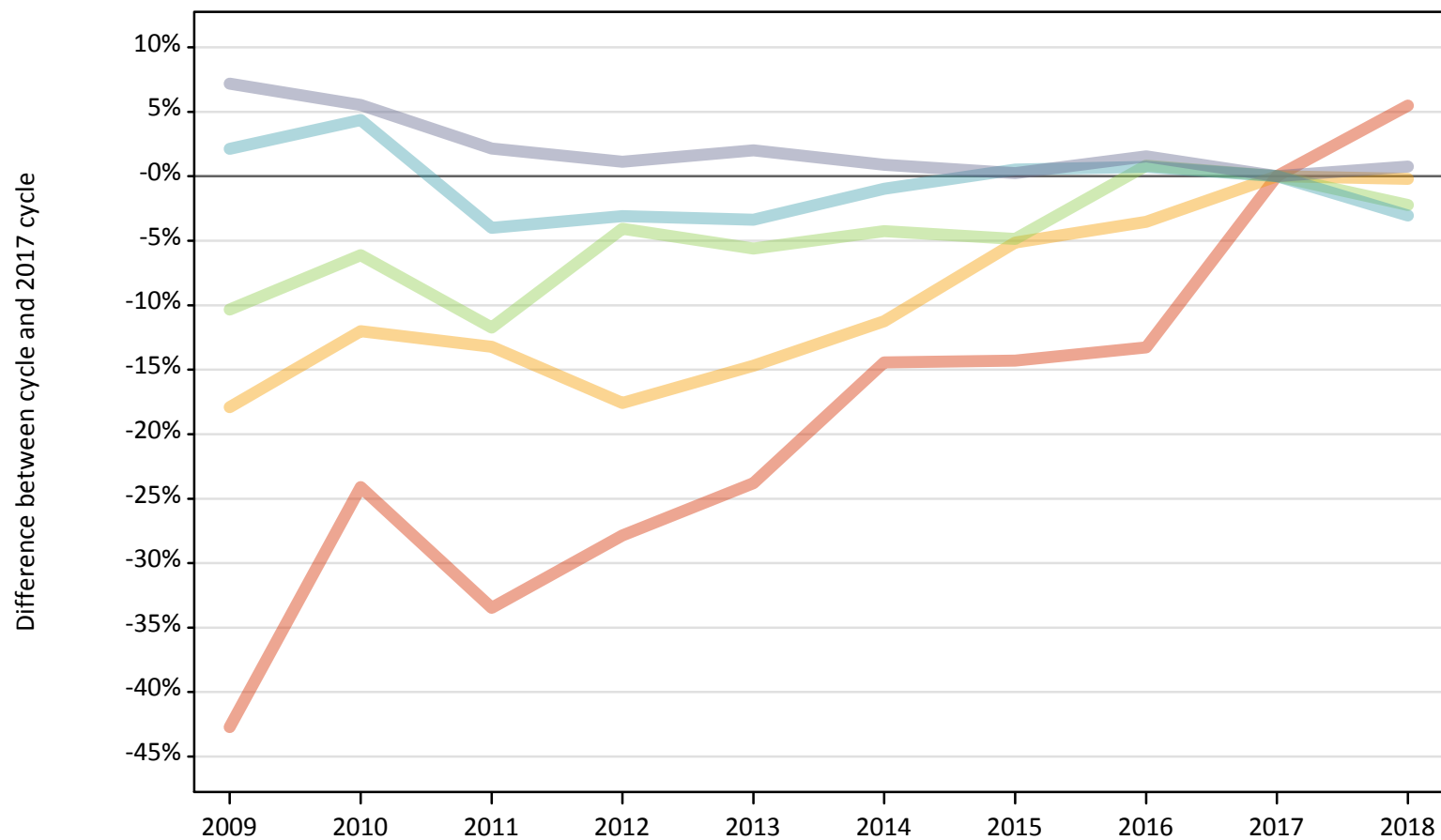
Applicant Status	POLAR3	2009	2010	2011	2012	2013	2014	2015	2016	2017	2018
Placed	Quintile 1	100	100	100	100	100	100	100	100	100	100
	Quintile 2	185	153	187	155	161	160	139	166	152	152
	Quintile 3	234	206	218	203	208	196	188	201	187	186
	Quintile 4	306	256	283	250	256	238	226	241	238	235
	Quintile 5	399	309	362	328	331	295	287	292	288	293



### P.13 Placed 18 year old applicants from Scotland by POLAR3 quintile: 12 days after A level results day

Placed 18 year old applicants: change relative to 2017 cycle totals

- Quintile 1
- Quintile 2
- Quintile 3
- Quintile 4
- Quintile 5



Note: The percentage change is not plotted in the above chart for groups with fewer than 30 placed applicants in any one cycle.

**P.14 Placed 18 year old applicants from Scotland by POLAR3 quintile: 12 days after A level results day**

Applicant Status	POLAR3	2009	2010	2011	2012	2013	2014	2015	2016	2017	2018
Placed	Quintile 1	400	530	460	500	530	590	590	600	690	730
	Quintile 2	1,280	1,370	1,350	1,280	1,330	1,380	1,480	1,500	1,560	1,560
	Quintile 3	2,050	2,150	2,020	2,190	2,160	2,190	2,180	2,310	2,290	2,240
	Quintile 4	3,480	3,560	3,270	3,300	3,290	3,380	3,430	3,430	3,410	3,300
	Quintile 5	7,150	7,040	6,820	6,750	6,810	6,730	6,690	6,780	6,670	6,720

**P.15 Placed 18 year old applicants from Scotland by POLAR3 quintile: 12 days after A level results day**

Placed 18 year old applicants: change relative to 2017 cycle totals

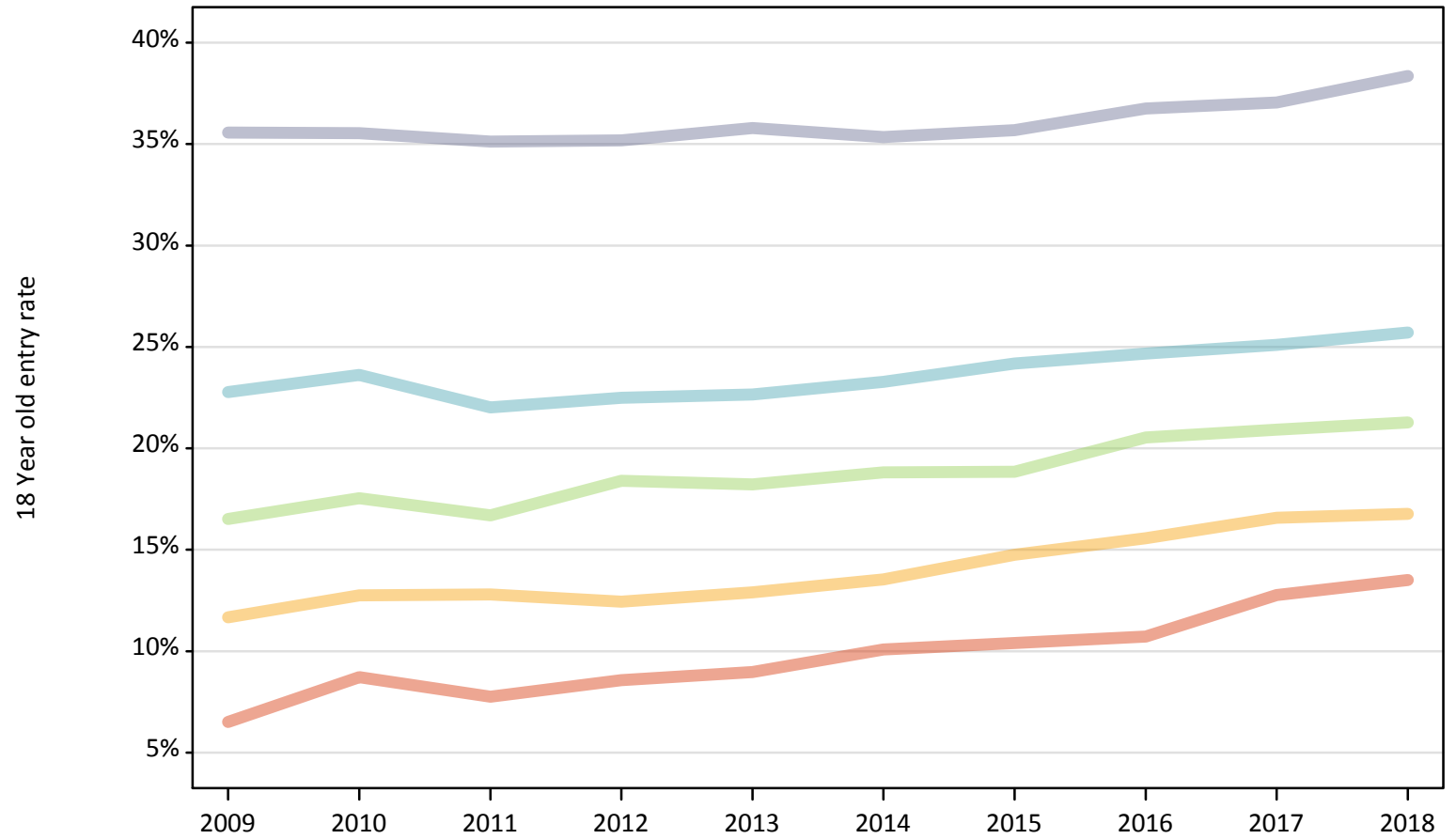
Applicant Status	POLAR3	2009	2010	2011	2012	2013	2014	2015	2016	2017	2018
Placed	Quintile 1	-43%	-24%	-33%	-28%	-24%	-14%	-14%	-13%	0%	5%
	Quintile 2	-18%	-12%	-13%	-18%	-15%	-11%	-5%	-4%	0%	-0%
	Quintile 3	-10%	-6%	-12%	-4%	-6%	-4%	-5%	1%	0%	-2%
	Quintile 4	2%	4%	-4%	-3%	-3%	-1%	1%	1%	0%	-3%
	Quintile 5	7%	6%	2%	1%	2%	1%	0%	2%	0%	1%

Note: The percentage change is not recorded in the above table for groups with fewer than 10 placed applicants in that cycle or in the 2017 cycle.

**P.16 Placed 18 year old applicants from Scotland by POLAR3 quintile: 12 days after A level results day**

Placed 18 year old applicants: entry rate

- Quintile 1
- Quintile 2
- Quintile 3
- Quintile 4
- Quintile 5



**P.17 Placed 18 year old applicants from Scotland by POLAR3 quintile: 12 days after A level results day**

Placed 18 year old applicants: entry rate

Applicant Status	POLAR3	2009	2010	2011	2012	2013	2014	2015	2016	2017	2018
Placed	Quintile 1	6.5%	8.7%	7.8%	8.6%	9.0%	10.1%	10.4%	10.7%	12.8%	13.5%
	Quintile 2	11.7%	12.8%	12.8%	12.4%	12.9%	13.5%	14.8%	15.6%	16.6%	16.8%
	Quintile 3	16.5%	17.5%	16.7%	18.4%	18.2%	18.8%	18.9%	20.5%	20.9%	21.3%
	Quintile 4	22.8%	23.6%	22.0%	22.5%	22.7%	23.3%	24.2%	24.7%	25.1%	25.7%
	Quintile 5	35.6%	35.5%	35.1%	35.2%	35.8%	35.3%	35.7%	36.8%	37.0%	38.4%

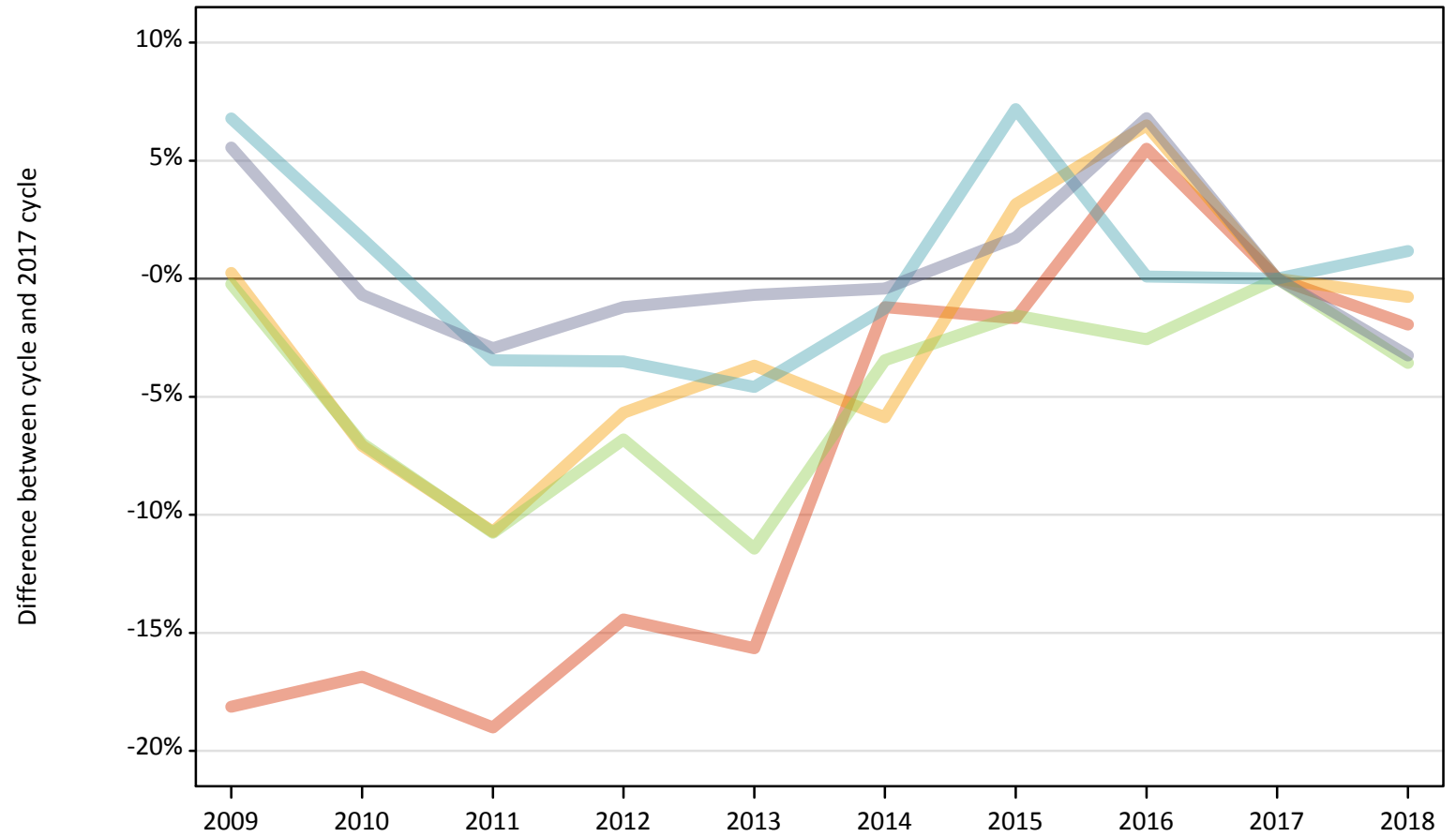
**P.18 Placed 18 year old applicants from Scotland by POLAR3 quintile: 12 days after A level results day**

Placed 18 year old applicants: entry rate (indexed to 100 = Quintile 1)

Applicant Status	POLAR3	2009	2010	2011	2012	2013	2014	2015	2016	2017	2018
Placed	Quintile 1	100	100	100	100	100	100	100	100	100	100
	Quintile 2	179	146	165	145	144	134	142	145	130	124
	Quintile 3	254	201	215	215	203	187	181	192	164	158
	Quintile 4	350	271	284	263	253	231	232	230	197	190
	Quintile 5	546	407	453	411	399	351	343	343	290	284

**P.19 Placed 18 year old applicants from Wales by POLAR3 quintile: 12 days after A level results day**  
Placed 18 year old applicants: change relative to 2017 cycle totals

- Quintile 1
- Quintile 2
- Quintile 3
- Quintile 4
- Quintile 5



Note: The percentage change is not plotted in the above chart for groups with fewer than 30 placed applicants in any one cycle.

**P.20 Placed 18 year old applicants from Wales by POLAR3 quintile: 12 days after A level results day**

Applicant Status	POLAR3	2009	2010	2011	2012	2013	2014	2015	2016	2017	2018
Placed	Quintile 1	1,220	1,240	1,210	1,270	1,260	1,470	1,460	1,570	1,490	1,460
	Quintile 2	2,070	1,920	1,840	1,950	1,990	1,940	2,130	2,200	2,060	2,050
	Quintile 3	1,790	1,670	1,600	1,670	1,590	1,730	1,770	1,750	1,790	1,730
	Quintile 4	2,380	2,260	2,150	2,150	2,120	2,200	2,390	2,230	2,230	2,250
	Quintile 5	2,800	2,630	2,570	2,620	2,630	2,640	2,700	2,830	2,650	2,560

**P.21 Placed 18 year old applicants from Wales by POLAR3 quintile: 12 days after A level results day**

Placed 18 year old applicants: change relative to 2017 cycle totals

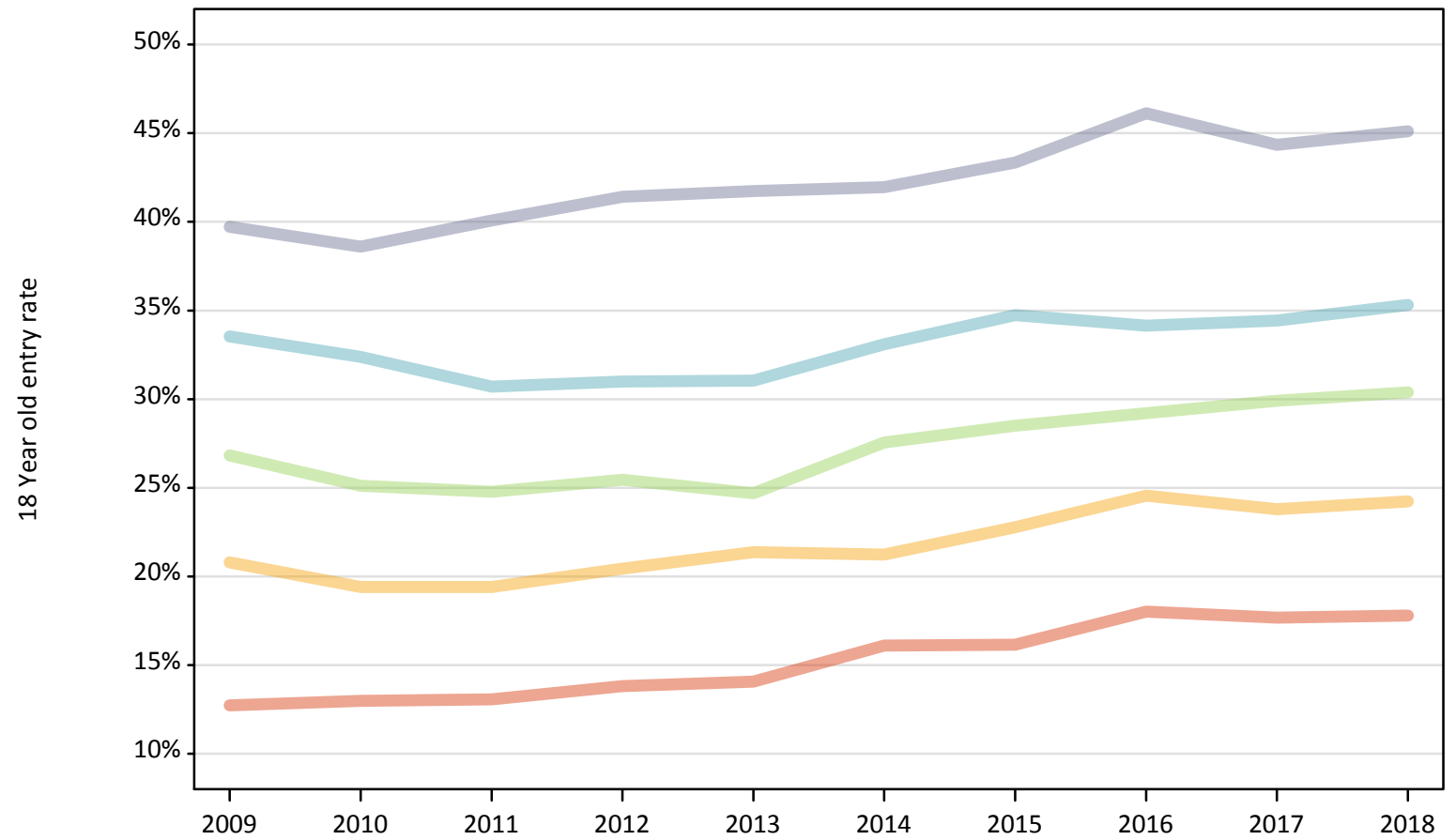
Applicant Status	POLAR3	2009	2010	2011	2012	2013	2014	2015	2016	2017	2018
Placed	Quintile 1	-18%	-17%	-19%	-14%	-16%	-1%	-2%	6%	0%	-2%
	Quintile 2	0%	-7%	-11%	-6%	-4%	-6%	3%	6%	0%	-1%
	Quintile 3	-0%	-7%	-11%	-7%	-11%	-3%	-2%	-3%	0%	-4%
	Quintile 4	7%	2%	-3%	-4%	-5%	-1%	7%	0%	0%	1%
	Quintile 5	6%	-1%	-3%	-1%	-1%	-0%	2%	7%	0%	-3%

Note: The percentage change is not recorded in the above table for groups with fewer than 10 placed applicants in that cycle or in the 2017 cycle.

## P.22 Placed 18 year old applicants from Wales by POLAR3 quintile: 12 days after A level results day

Placed 18 year old applicants: entry rate

- Quintile 1
- Quintile 2
- Quintile 3
- Quintile 4
- Quintile 5



**P.23 Placed 18 year old applicants from Wales by POLAR3 quintile: 12 days after A level results day**

Placed 18 year old applicants: entry rate

Applicant Status	POLAR3	2009	2010	2011	2012	2013	2014	2015	2016	2017	2018
Placed	Quintile 1	12.7%	13.0%	13.1%	13.8%	14.1%	16.1%	16.1%	18.0%	17.7%	17.8%
	Quintile 2	20.8%	19.4%	19.4%	20.4%	21.4%	21.2%	22.8%	24.5%	23.8%	24.2%
	Quintile 3	26.8%	25.1%	24.8%	25.5%	24.7%	27.5%	28.5%	29.2%	29.9%	30.4%
	Quintile 4	33.5%	32.4%	30.7%	31.0%	31.0%	33.1%	34.7%	34.1%	34.4%	35.3%
	Quintile 5	39.7%	38.6%	40.1%	41.4%	41.7%	42.0%	43.3%	46.1%	44.3%	45.1%

**P.24 Placed 18 year old applicants from Wales by POLAR3 quintile: 12 days after A level results day**

Placed 18 year old applicants: entry rate (indexed to 100 = Quintile 1)

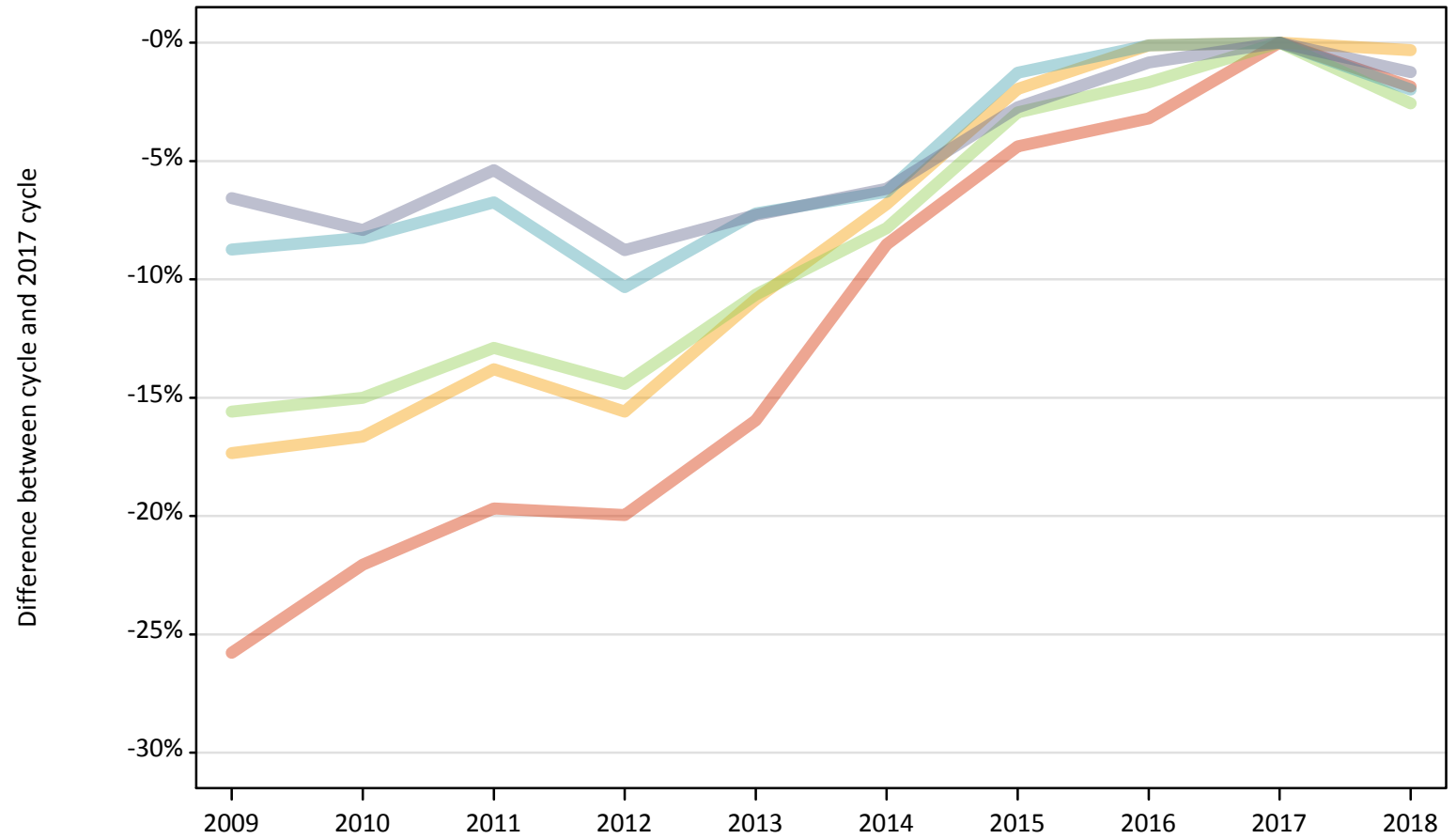
Applicant Status	POLAR3	2009	2010	2011	2012	2013	2014	2015	2016	2017	2018
Placed	Quintile 1	100	100	100	100	100	100	100	100	100	100
	Quintile 2	163	150	148	148	152	132	141	136	135	136
	Quintile 3	211	194	190	184	176	171	177	162	169	171
	Quintile 4	263	250	235	224	221	206	215	189	195	199
	Quintile 5	312	297	307	300	297	261	268	256	251	254



**P.25 Placed 18 year old applicants from the UK by POLAR3 quintile: 12 days after A level results day**

Placed 18 year old applicants: change relative to 2017 cycle totals

- Quintile 1
- Quintile 2
- Quintile 3
- Quintile 4
- Quintile 5



Note: The percentage change is not plotted in the above chart for groups with fewer than 30 placed applicants in any one cycle.

**P.26 Placed 18 year old applicants from the UK by POLAR3 quintile: 12 days after A level results day**

Applicant Status	POLAR3	2009	2010	2011	2012	2013	2014	2015	2016	2017	2018
Placed	Quintile 1	19,060	20,010	20,620	20,550	21,580	23,490	24,550	24,850	25,680	25,200
	Quintile 2	29,790	30,040	31,070	30,430	32,140	33,580	35,340	36,000	36,040	35,930
	Quintile 3	38,900	39,170	40,140	39,440	41,180	42,470	44,720	45,310	46,080	44,900
	Quintile 4	50,350	50,630	51,460	49,470	51,200	51,700	54,470	55,110	55,170	54,080
	Quintile 5	70,470	69,450	71,360	68,810	69,930	70,770	73,360	74,790	75,420	74,490

**P.27 Placed 18 year old applicants from the UK by POLAR3 quintile: 12 days after A level results day**

Placed 18 year old applicants: change relative to 2017 cycle totals

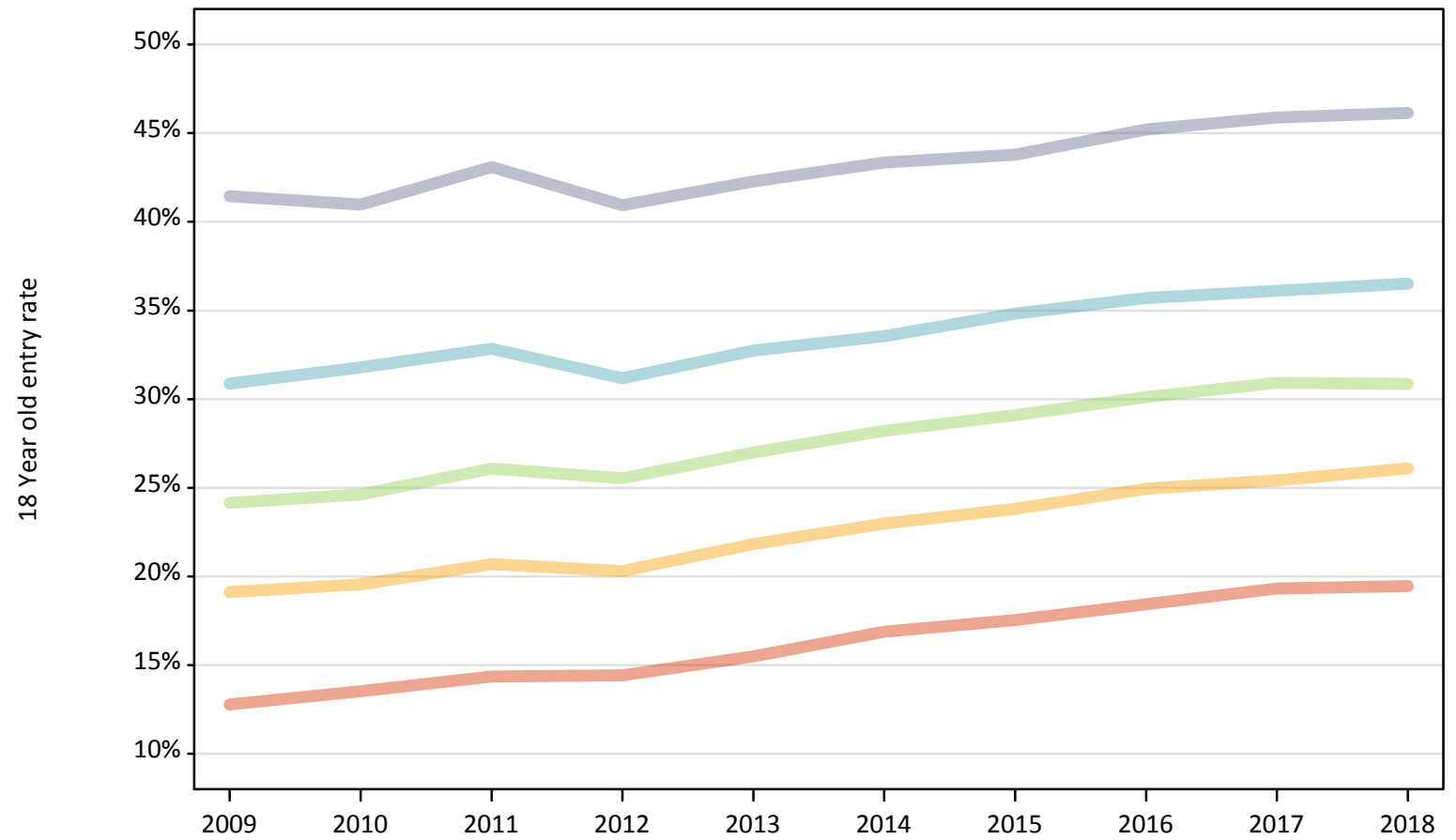
Applicant Status	POLAR3	2009	2010	2011	2012	2013	2014	2015	2016	2017	2018
Placed	Quintile 1	-26%	-22%	-20%	-20%	-16%	-9%	-4%	-3%	0%	-2%
	Quintile 2	-17%	-17%	-14%	-16%	-11%	-7%	-2%	-0%	0%	-0%
	Quintile 3	-16%	-15%	-13%	-14%	-11%	-8%	-3%	-2%	0%	-3%
	Quintile 4	-9%	-8%	-7%	-10%	-7%	-6%	-1%	-0%	0%	-2%
	Quintile 5	-7%	-8%	-5%	-9%	-7%	-6%	-3%	-1%	0%	-1%

Note: The percentage change is not recorded in the above table for groups with fewer than 10 placed applicants in that cycle or in the 2017 cycle.

## P.28 Placed 18 year old applicants from the UK by POLAR3 quintile: 12 days after A level results day

Placed 18 year old applicants: entry rate

- Quintile 1
- Quintile 2
- Quintile 3
- Quintile 4
- Quintile 5



**P.29 Placed 18 year old applicants from the UK by POLAR3 quintile: 12 days after A level results day**

Placed 18 year old applicants: entry rate

Applicant Status	POLAR3	2009	2010	2011	2012	2013	2014	2015	2016	2017	2018
Placed	Quintile 1	12.8%	13.5%	14.3%	14.4%	15.5%	16.9%	17.5%	18.4%	19.3%	19.4%
	Quintile 2	19.1%	19.6%	20.7%	20.3%	21.8%	23.0%	23.8%	24.9%	25.4%	26.1%
	Quintile 3	24.1%	24.6%	26.1%	25.5%	27.0%	28.2%	29.1%	30.1%	30.9%	30.8%
	Quintile 4	30.9%	31.8%	32.8%	31.2%	32.7%	33.5%	34.8%	35.7%	36.1%	36.5%
	Quintile 5	41.4%	41.0%	43.1%	40.9%	42.3%	43.3%	43.8%	45.2%	45.9%	46.1%

**P.30 Placed 18 year old applicants from the UK by POLAR3 quintile: 12 days after A level results day**

Placed 18 year old applicants: entry rate (indexed to 100 = Quintile 1)

Applicant Status	POLAR3	2009	2010	2011	2012	2013	2014	2015	2016	2017	2018
Placed	Quintile 1	100	100	100	100	100	100	100	100	100	100
	Quintile 2	150	145	144	141	141	136	136	135	132	134
	Quintile 3	189	182	182	177	174	167	166	164	160	159
	Quintile 4	241	235	229	216	211	199	199	194	187	188
	Quintile 5	324	303	300	284	273	257	250	246	238	237