

Daily Clearing Analysis: Age

Analysis at 00:05 on Tuesday 28 August 2018 (12 days after A level results day)

C.1 Placed applicants by country of domicile and age group, 2018 cycle (12 days after A level results day)

Domicile of applicant	Age group				
	17 and under	18	19	20 to 24	25 and over
England	670	202,530	67,050	47,260	28,650
Northern Ireland	30	8,060	2,340	2,370	790
Scotland	510	14,590	4,540	8,230	6,550
Wales	30	10,080	3,290	2,710	2,130
UK	1,230	235,260	77,220	60,570	38,110

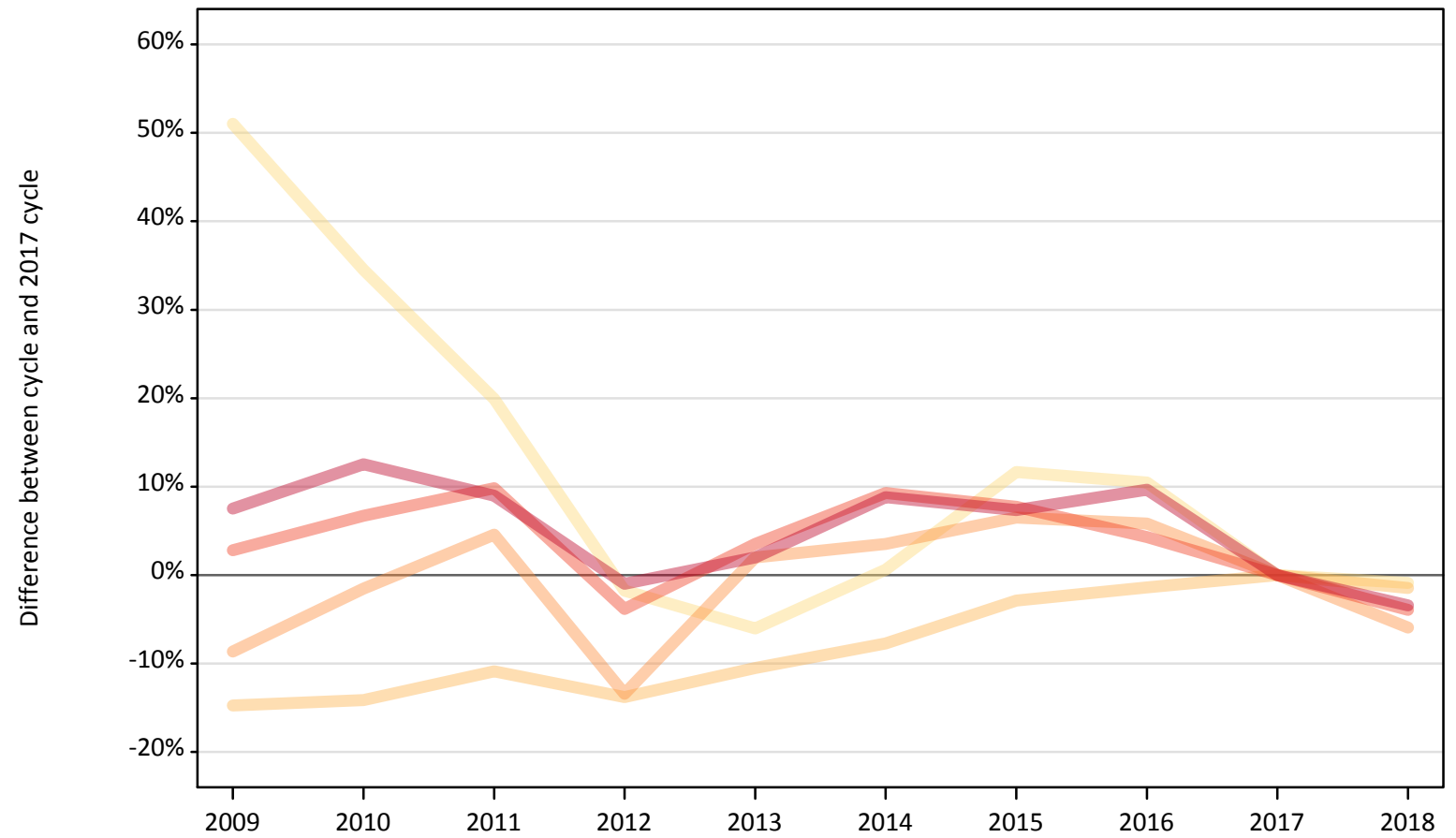
C.2 Proportion of 18 year old population placed by country of domicile, 2018 cycle (12 days after A level results day)

Domicile of applicant	Age group	2018
England	18	33.2%
Northern Ireland	18	34.8%
Scotland	18	26.3%
Wales	18	29.3%

C.3 Placed applicants from England by age group at 12 days after A level results day

Selected age groups: difference between cycle and 2017 cycle

- 17 and under
- 18
- 19
- 20 to 24
- 25 and over



Note: The percentage change is not plotted in the above chart for groups with fewer than 30 placed applicants in any one cycle.

C.4 Placed applicants from England by age group at 12 days after A level results day

All age groups

Domicile of applicant	Age group	2009	2010	2011	2012	2013	2014	2015	2016	2017	2018
England	17 and under	1,020	910	810	670	640	680	760	750	680	670
	18	175,240	176,510	183,150	177,150	183,950	189,630	199,640	202,700	205,550	202,530
	19	65,120	70,200	74,540	61,720	72,710	73,800	75,930	75,440	71,290	67,050
	20 to 24	50,570	52,490	54,030	47,310	50,930	53,760	52,990	51,300	49,200	47,260
	25 and over	31,900	33,380	32,330	29,370	30,260	32,280	31,840	32,530	29,670	28,650

C.5 Placed applicants from England by age group at 12 days after A level results day

Selected age groups: difference between cycle and 2017 cycle

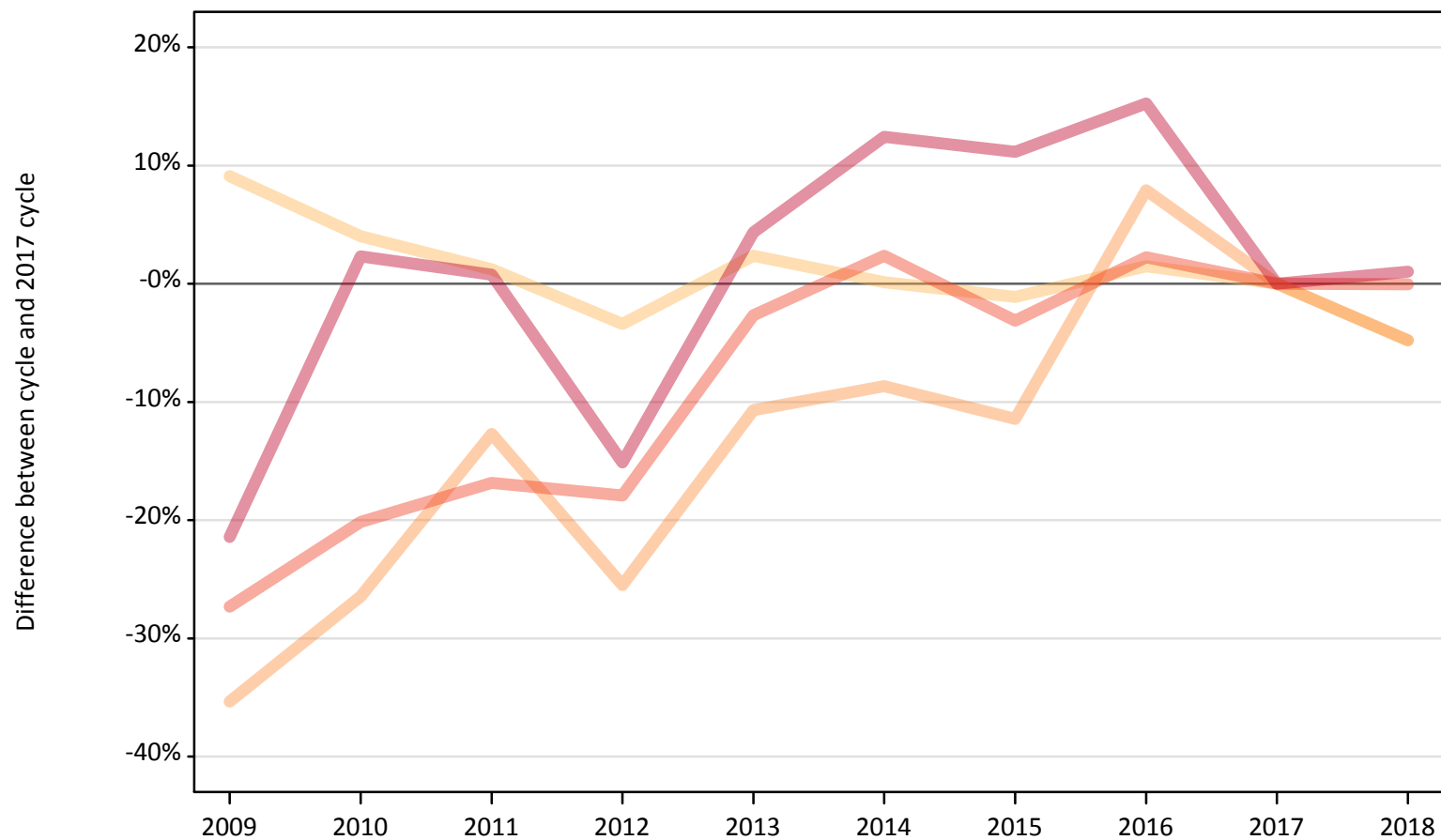
Domicile of applicant	Age group	2009	2010	2011	2012	2013	2014	2015	2016	2017	2018
England	17 and under	51%	35%	20%	-2%	-6%	1%	12%	10%	0%	-1%
	18	-15%	-14%	-11%	-14%	-11%	-8%	-3%	-1%	0%	-1%
	19	-9%	-2%	5%	-13%	2%	4%	7%	6%	0%	-6%
	20 to 24	3%	7%	10%	-4%	4%	9%	8%	4%	0%	-4%
	25 and over	8%	13%	9%	-1%	2%	9%	7%	10%	0%	-3%

Note: The percentage change is not recorded in the above table for groups with fewer than 10 placed applicants in that cycle or in the 2017 cycle.

C.6 Placed applicants from Northern Ireland by age group at 12 days after A level results day

Selected age groups: difference between cycle and 2017 cycle

- 17 and under
- 18
- 19
- 20 to 24
- 25 and over



Note: The percentage change is not plotted in the above chart for groups with fewer than 30 placed applicants in any one cycle.

C.7 Placed applicants from Northern Ireland by age group at 12 days after A level results day

All age groups

Domicile of applicant	Age group	2009	2010	2011	2012	2013	2014	2015	2016	2017	2018
Northern Ireland	17 and under	50	40	40	40	20	20	20	30	20	30
	18	9,240	8,810	8,570	8,180	8,670	8,480	8,380	8,600	8,470	8,060
	19	1,590	1,810	2,140	1,830	2,190	2,240	2,180	2,650	2,460	2,340
	20 to 24	1,720	1,890	1,970	1,940	2,310	2,420	2,290	2,420	2,370	2,370
	25 and over	610	800	790	660	810	880	870	900	780	790

C.8 Placed applicants from Northern Ireland by age group at 12 days after A level results day

Selected age groups: difference between cycle and 2017 cycle

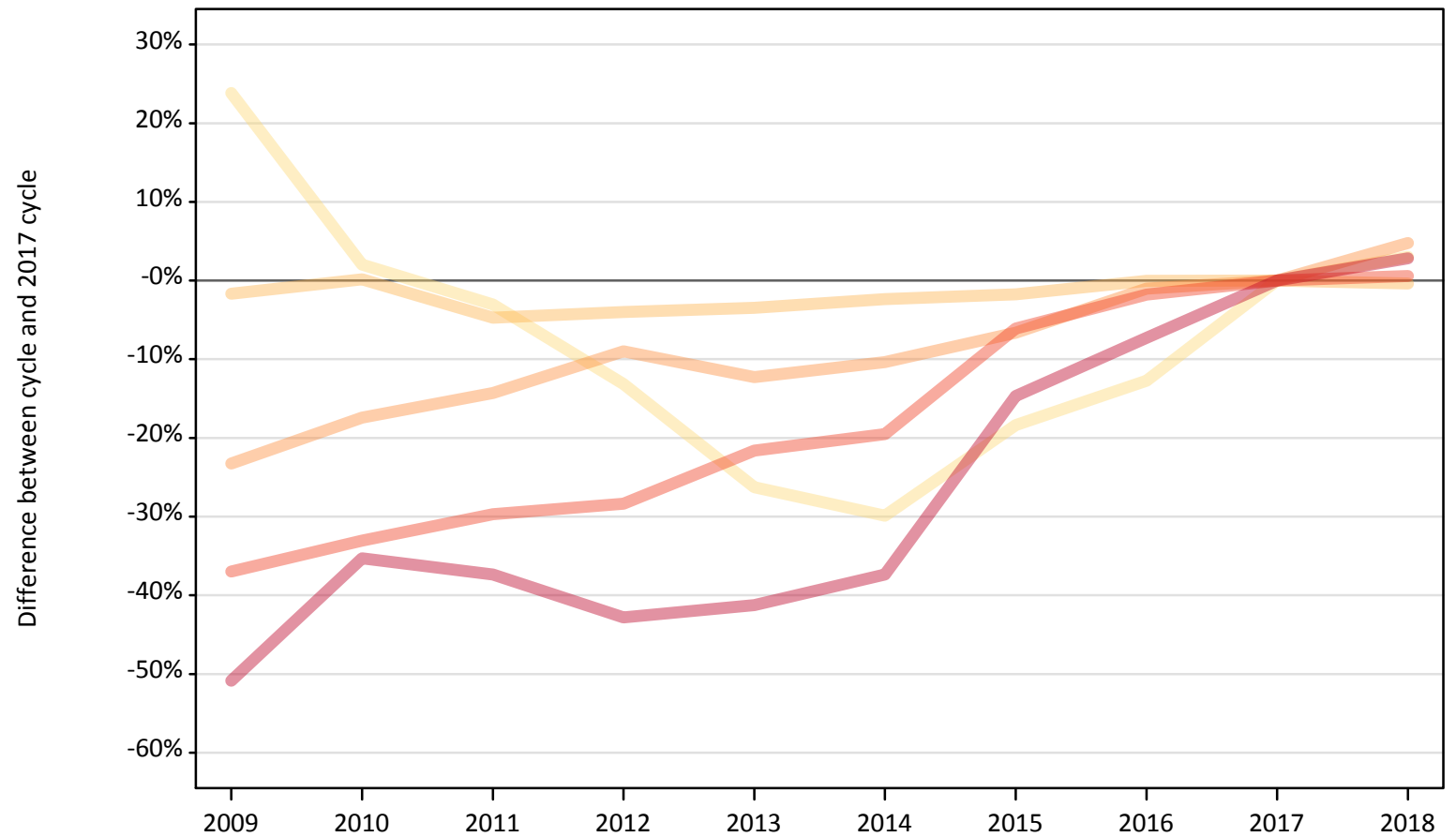
Domicile of applicant	Age group	2009	2010	2011	2012	2013	2014	2015	2016	2017	2018
Northern Ireland	17 and under	189%	111%	106%	133%	17%	11%	0%	72%	0%	39%
	18	9%	4%	1%	-3%	2%	0%	-1%	1%	0%	-5%
	19	-35%	-26%	-13%	-25%	-11%	-9%	-11%	8%	0%	-5%
	20 to 24	-27%	-20%	-17%	-18%	-3%	2%	-3%	2%	0%	-0%
	25 and over	-21%	2%	1%	-15%	4%	12%	11%	15%	0%	1%

Note: The percentage change is not recorded in the above table for groups with fewer than 10 placed applicants in that cycle or in the 2017 cycle.

C.9 Placed applicants from Scotland by age group at 12 days after A level results day

Selected age groups: difference between cycle and 2017 cycle

- 17 and under
- 18
- 19
- 20 to 24
- 25 and over



Note: The percentage change is not plotted in the above chart for groups with fewer than 30 placed applicants in any one cycle.

C.10 Placed applicants from Scotland by age group at 12 days after A level results day

All age groups

Domicile of applicant	Age group	2009	2010	2011	2012	2013	2014	2015	2016	2017	2018
Scotland	17 and under	610	510	480	430	370	350	400	430	500	510
	18	14,400	14,670	13,960	14,060	14,140	14,310	14,400	14,640	14,650	14,590
	19	3,330	3,580	3,710	3,950	3,800	3,880	4,050	4,290	4,330	4,540
	20 to 24	5,150	5,480	5,750	5,860	6,410	6,580	7,680	8,030	8,180	8,230
	25 and over	3,130	4,120	3,990	3,640	3,740	3,990	5,430	5,900	6,370	6,550

C.11 Placed applicants from Scotland by age group at 12 days after A level results day

Selected age groups: difference between cycle and 2017 cycle

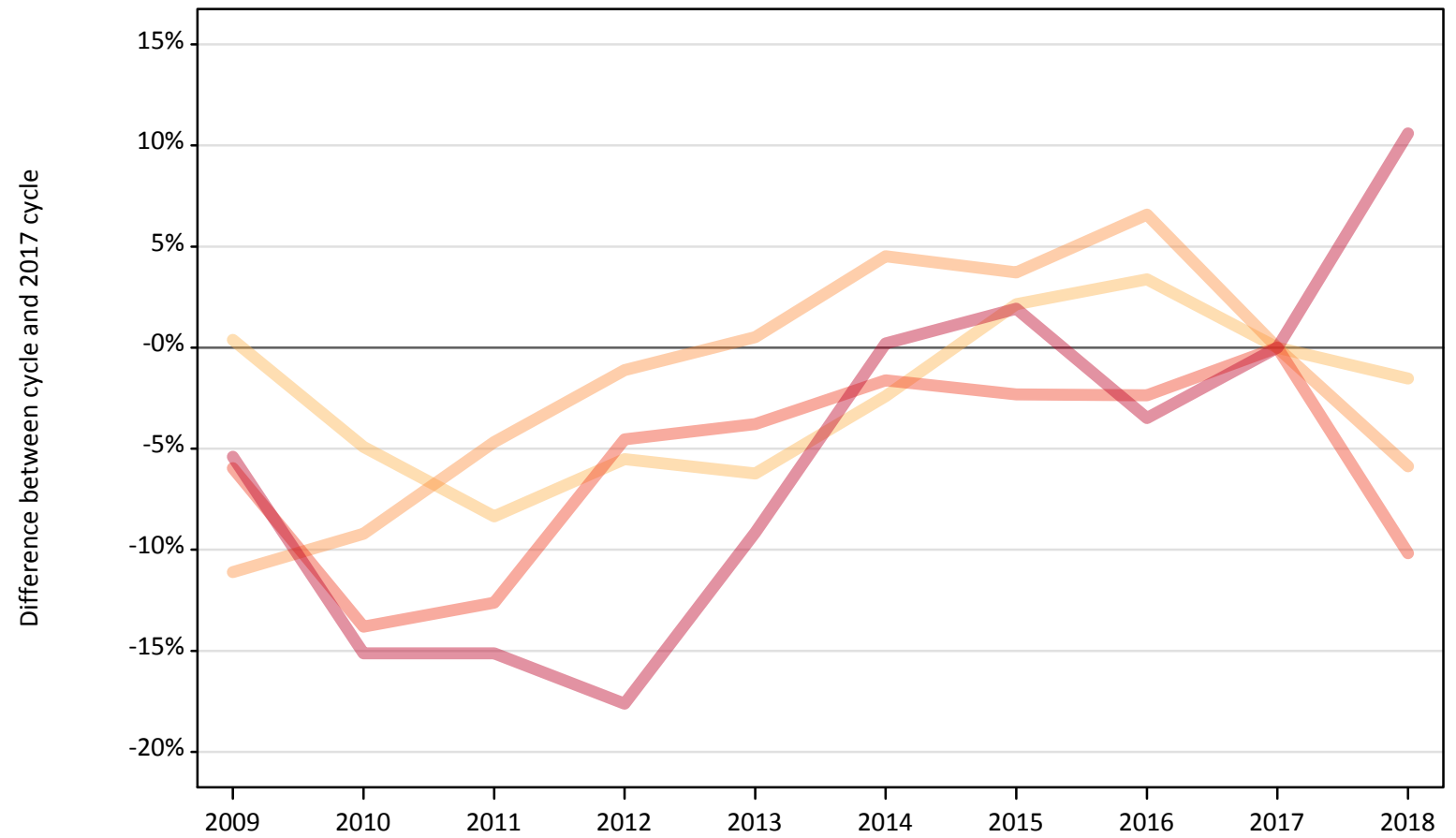
Domicile of applicant	Age group	2009	2010	2011	2012	2013	2014	2015	2016	2017	2018
Scotland	17 and under	24%	2%	-3%	-13%	-26%	-30%	-18%	-13%	0%	3%
	18	-2%	0%	-5%	-4%	-3%	-2%	-2%	-0%	0%	-0%
	19	-23%	-17%	-14%	-9%	-12%	-10%	-7%	-1%	0%	5%
	20 to 24	-37%	-33%	-30%	-28%	-22%	-20%	-6%	-2%	0%	1%
	25 and over	-51%	-35%	-37%	-43%	-41%	-37%	-15%	-7%	0%	3%

Note: The percentage change is not recorded in the above table for groups with fewer than 10 placed applicants in that cycle or in the 2017 cycle.

C.12 Placed applicants from Wales by age group at 12 days after A level results day

Selected age groups: difference between cycle and 2017 cycle

- 17 and under
- 18
- 19
- 20 to 24
- 25 and over



Note: The percentage change is not plotted in the above chart for groups with fewer than 30 placed applicants in any one cycle.

C.13 Placed applicants from Wales by age group at 12 days after A level results day

All age groups

Domicile of applicant	Age group	2009	2010	2011	2012	2013	2014	2015	2016	2017	2018
Wales	17 and under	50	40	30	20	30	20	20	20	20	30
	18	10,280	9,740	9,380	9,670	9,600	9,990	10,460	10,580	10,240	10,080
	19	3,110	3,170	3,330	3,460	3,510	3,650	3,630	3,730	3,500	3,290
	20 to 24	2,840	2,600	2,640	2,880	2,910	2,970	2,950	2,950	3,020	2,710
	25 and over	1,820	1,630	1,630	1,590	1,750	1,930	1,960	1,860	1,930	2,130

C.14 Placed applicants from Wales by age group at 12 days after A level results day

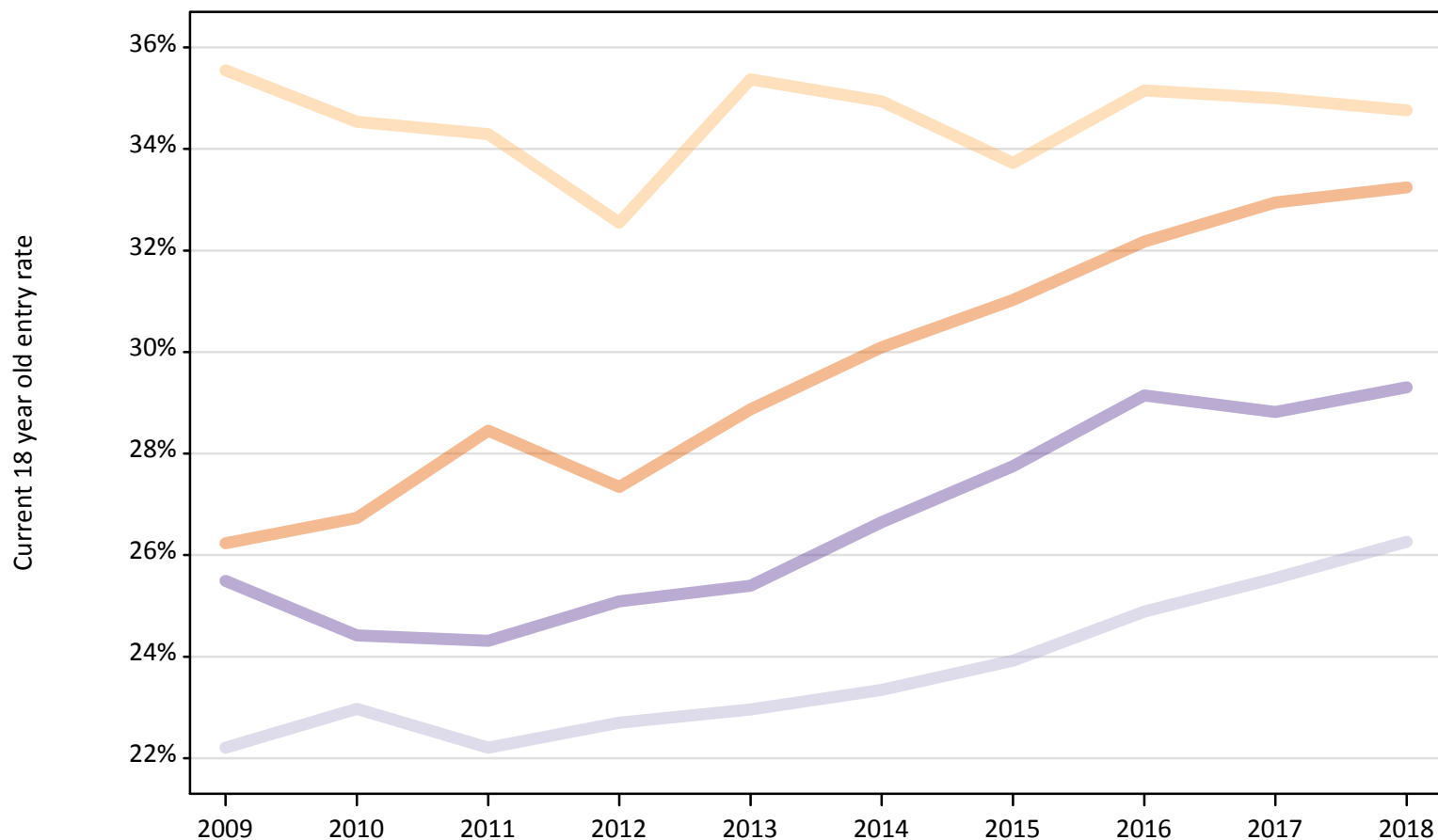
Selected age groups: difference between cycle and 2017 cycle

Domicile of applicant	Age group	2009	2010	2011	2012	2013	2014	2015	2016	2017	2018
Wales	17 and under	181%	119%	100%	31%	88%	38%	13%	50%	0%	56%
	18	0%	-5%	-8%	-6%	-6%	-2%	2%	3%	0%	-2%
	19	-11%	-9%	-5%	-1%	1%	5%	4%	7%	0%	-6%
	20 to 24	-6%	-14%	-13%	-5%	-4%	-2%	-2%	-2%	0%	-10%
	25 and over	-5%	-15%	-15%	-18%	-9%	0%	2%	-3%	0%	11%

Note: The percentage change is not recorded in the above table for groups with fewer than 10 placed applicants in that cycle or in the 2017 cycle.

C.15 Entry rates for 18 year olds by UK country of domicile: 12 days after A level results day

Placed 18 year old applicants as a proportion of the 18 year old population



C.16 Entry rates for 18 year olds by UK country of domicile: 12 days after A level results day

Placed 18 year old applicants as a proportion of the 18 year old population

Domicile of applicant	Age group	2009	2010	2011	2012	2013	2014	2015	2016	2017	2018
England	18	26.2%	26.7%	28.5%	27.3%	28.9%	30.1%	31.0%	32.2%	32.9%	33.2%
Northern Ireland	18	35.6%	34.5%	34.3%	32.5%	35.4%	34.9%	33.7%	35.2%	35.0%	34.8%
Scotland	18	22.2%	23.0%	22.2%	22.7%	23.0%	23.3%	23.9%	24.9%	25.5%	26.3%
Wales	18	25.5%	24.4%	24.3%	25.1%	25.4%	26.6%	27.8%	29.1%	28.8%	29.3%