

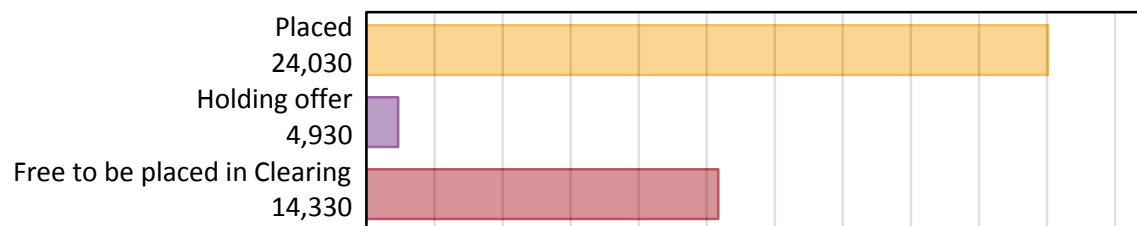
Daily Clearing Analysis: Overview

B7 Nursing analysis at 00:05 on Friday 24 August 2018 (8 days after A level results day)

AB.1 Placed applicants to nursing from all domiciles, 2018 cycle

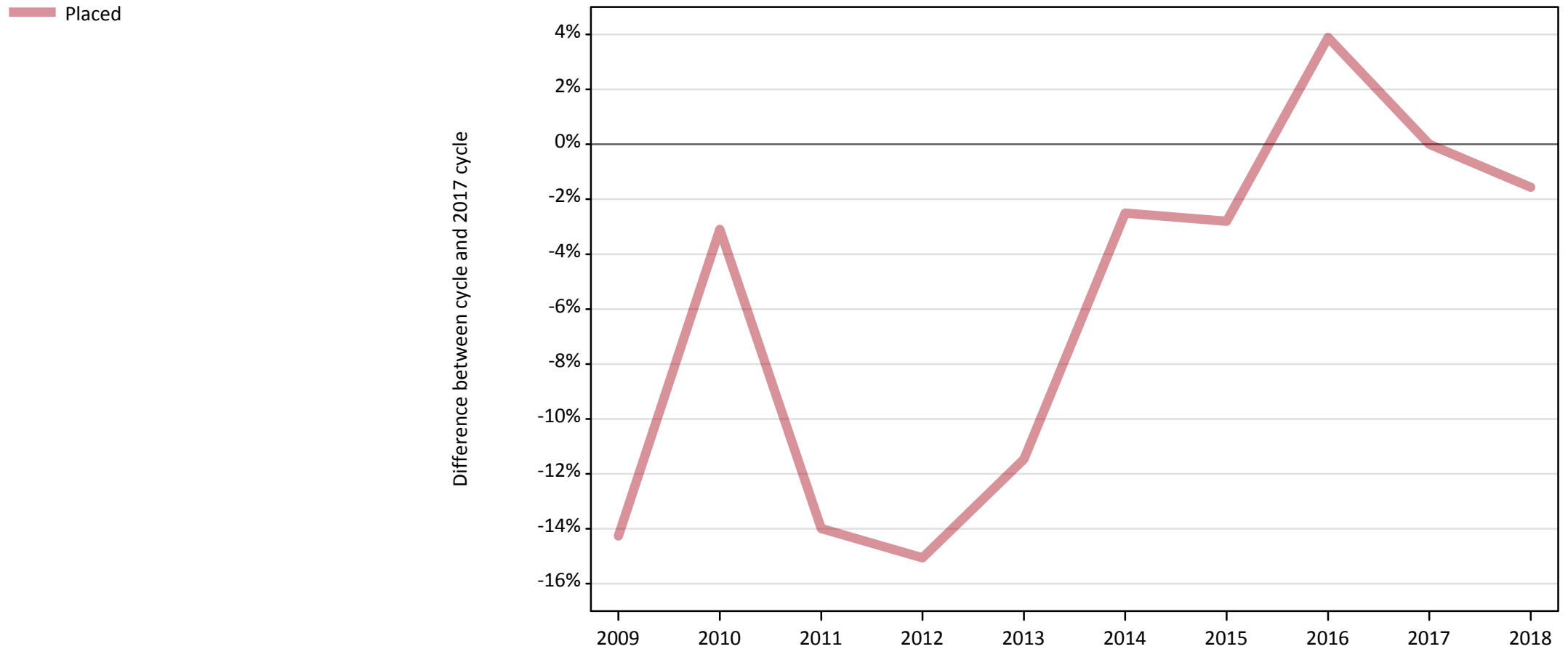
Applicant type	Status	2018
Main scheme	Placed (Clearing)	1,140
	Placed (Adjustment)	10
	Placed (Firm)	21,040
	Placed (Insurance)	480
	Placed (Other)	980
	Holding offer	4,930
	Free to be placed in Clearing	14,330
Direct to Clearing	Placed (Direct to Clearing)	390
	Other (Direct to Clearing)	450
All applicants	Placed	24,030

AB.2 Summary of nursing applicants who are placed, holding offers or free to be placed in Clearing (all domiciles)



AB.3 Placed applicants to nursing from all domiciles: 8 days after A level results day

Placed applicants to nursing: difference between cycle and 2017 cycle



Note: The percentage change is not plotted in the above chart for groups with fewer than 30 placed applicants in any one cycle.

AB.4 Placed applicants to nursing from all domiciles: 8 days after A level results day

Placed applicants to nursing: applicants at 8 days after A level results day

Applicant type	Status	2009	2010	2011	2012	2013	2014	2015	2016	2017	2018
All applicants	Placed	20,930	23,650	20,990	20,730	21,610	23,800	23,730	25,360	24,410	24,030

AB.5 Placed applicants to nursing from all domiciles: 8 days after A level results day

Placed applicants to nursing: difference between cycle and 2017 cycle

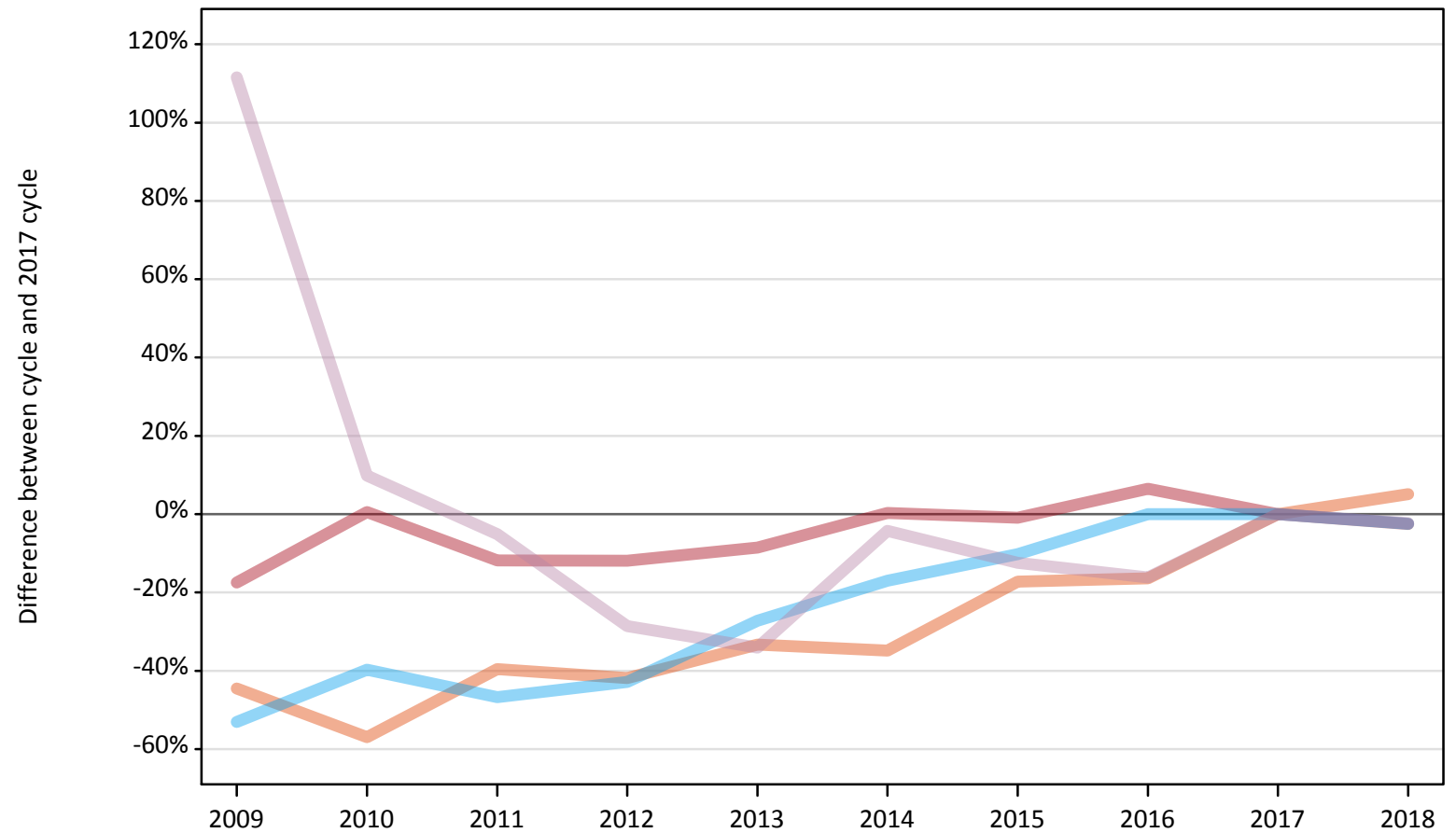
Applicant type	Status	2009	2010	2011	2012	2013	2014	2015	2016	2017	2018
All applicants	Placed	-14%	-3%	-14%	-15%	-11%	-3%	-3%	4%	0%	-2%

Note: The percentage change is not recorded in the above table for groups with fewer than 10 placed applicants in that cycle or in the 2017 cycle.

AB.6 Placed main scheme applicants to nursing from all domiciles: 8 days after A level results day

All Main scheme placed routes (excluding Adjustment): difference between cycle and 2017 cycle

- Placed (Clearing)
- Placed (Firm)
- Placed (Insurance)
- Placed (Other)



Note: The percentage change is not plotted in the above chart for groups with fewer than 30 placed applicants in any one cycle.

AB.7 Placed main scheme applicants to nursing from all domiciles: 8 days after A level results day

All Main scheme placed routes (excluding Adjustment): applicants at 8 days after A level results day

Applicant type	Status	2009	2010	2011	2012	2013	2014	2015	2016	2017	2018
Main scheme	Placed (Clearing)	600	470	650	630	720	700	890	900	1,080	1,140
	Placed (Firm)	17,810	21,710	19,040	19,020	19,740	21,650	21,390	22,980	21,590	21,040
	Placed (Insurance)	230	290	260	280	360	410	440	490	490	480
	Placed (Other)	2,120	1,100	950	720	660	960	880	840	1,000	980

AB.8 Placed main scheme applicants to nursing from all domiciles: 8 days after A level results day

All Main scheme placed routes (excluding Adjustment): difference between cycle and 2017 cycle

Applicant type	Status	2009	2010	2011	2012	2013	2014	2015	2016	2017	2018
Main scheme	Placed (Clearing)	-45%	-57%	-40%	-42%	-33%	-35%	-17%	-16%	0%	5%
	Placed (Firm)	-17%	1%	-12%	-12%	-9%	0%	-1%	6%	0%	-3%
	Placed (Insurance)	-53%	-40%	-47%	-43%	-27%	-17%	-10%	0%	0%	-2%
	Placed (Other)	112%	10%	-5%	-29%	-34%	-4%	-12%	-16%	0%	-2%

Note: The percentage change is not recorded in the above table for groups with fewer than 10 placed applicants in that cycle or in the 2017 cycle.

AB.9 Main scheme applicants placed to nursing through adjustment: 8 days after A level results day

Placed through adjustment: difference between cycle and 2017 cycle

[This chart is not part of this report]

AB.10 Main scheme applicants placed to nursing through adjustment: 8 days after A level results day

Placed through adjustment: applicants at 8 days after A level results day

Applicant type	Status	2009	2010	2011	2012	2013	2014	2015	2016	2017	2018
Main scheme	Placed (Adjustment)	0	0	0	0	10	10	10	0	20	10

AB.11 Main scheme applicants placed to nursing through adjustment: 8 days after A level results day

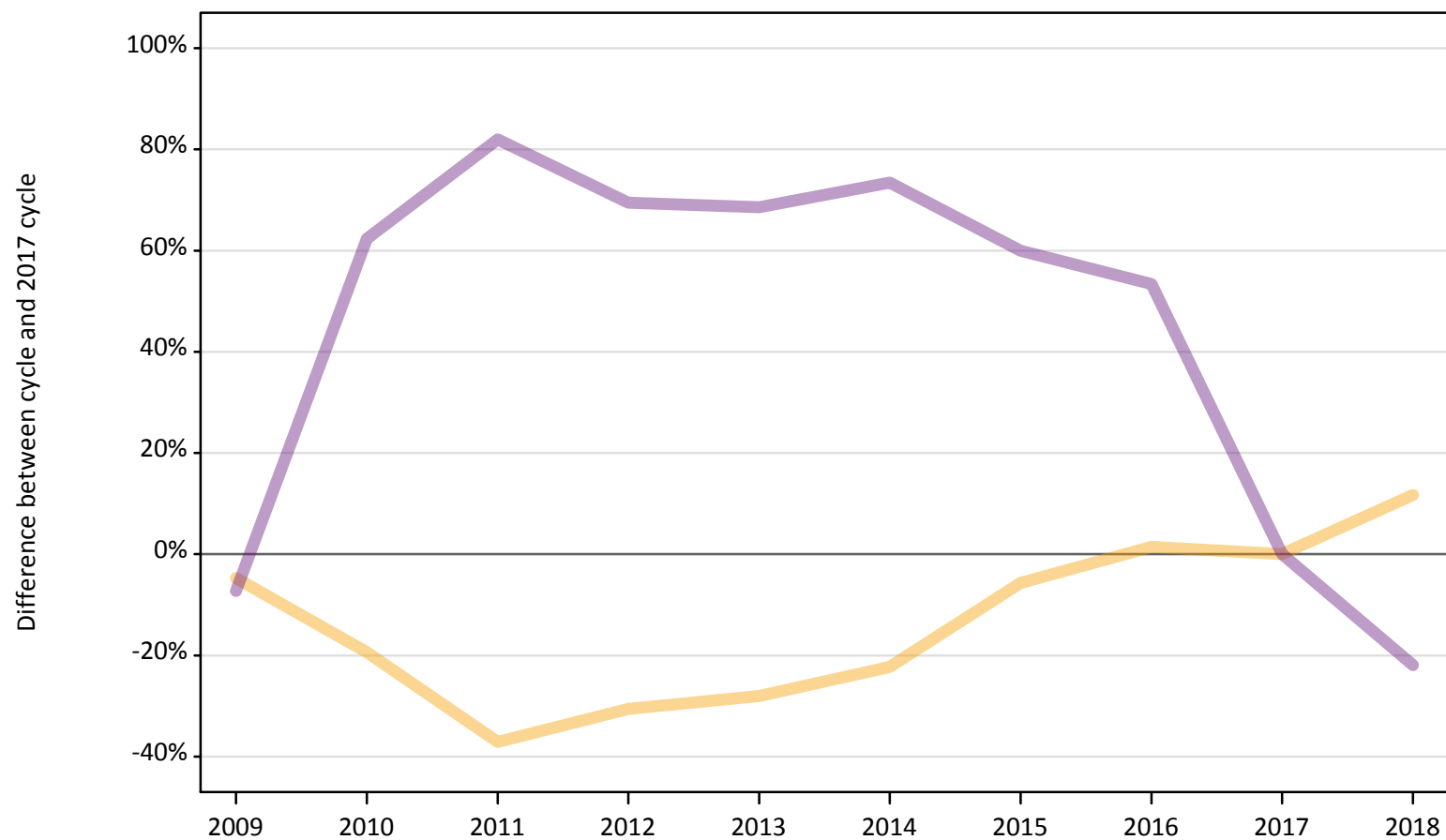
Placed through adjustment: difference between cycle and 2017 cycle

[This table is not part of this report]

AB.12 Main scheme applicants to nursing not currently placed from all domiciles: 8 days after A level results day

Applicants in unplaced states: difference between cycle and 2017 cycle

— Holding offer
— Free to be placed in Clearing



Note: The percentage change is not plotted in the above chart for groups with fewer than 30 unplaced applicants in any one cycle.

AB.13 Main scheme applicants to nursing not currently placed from all domiciles: 8 days after A level results day

Applicants in unplaced states: applicants at 8 days after A level results day

Applicant type	Status	2009	2010	2011	2012	2013	2014	2015	2016	2017	2018
Main scheme	Holding offer	4,200	3,550	2,770	3,060	3,170	3,430	4,160	4,470	4,410	4,930
	Free to be placed in Clearing	17,030	29,810	33,420	31,110	30,960	31,850	29,380	28,170	18,360	14,330

AB.14 Main scheme applicants to nursing not currently placed from all domiciles: 8 days after A level results day

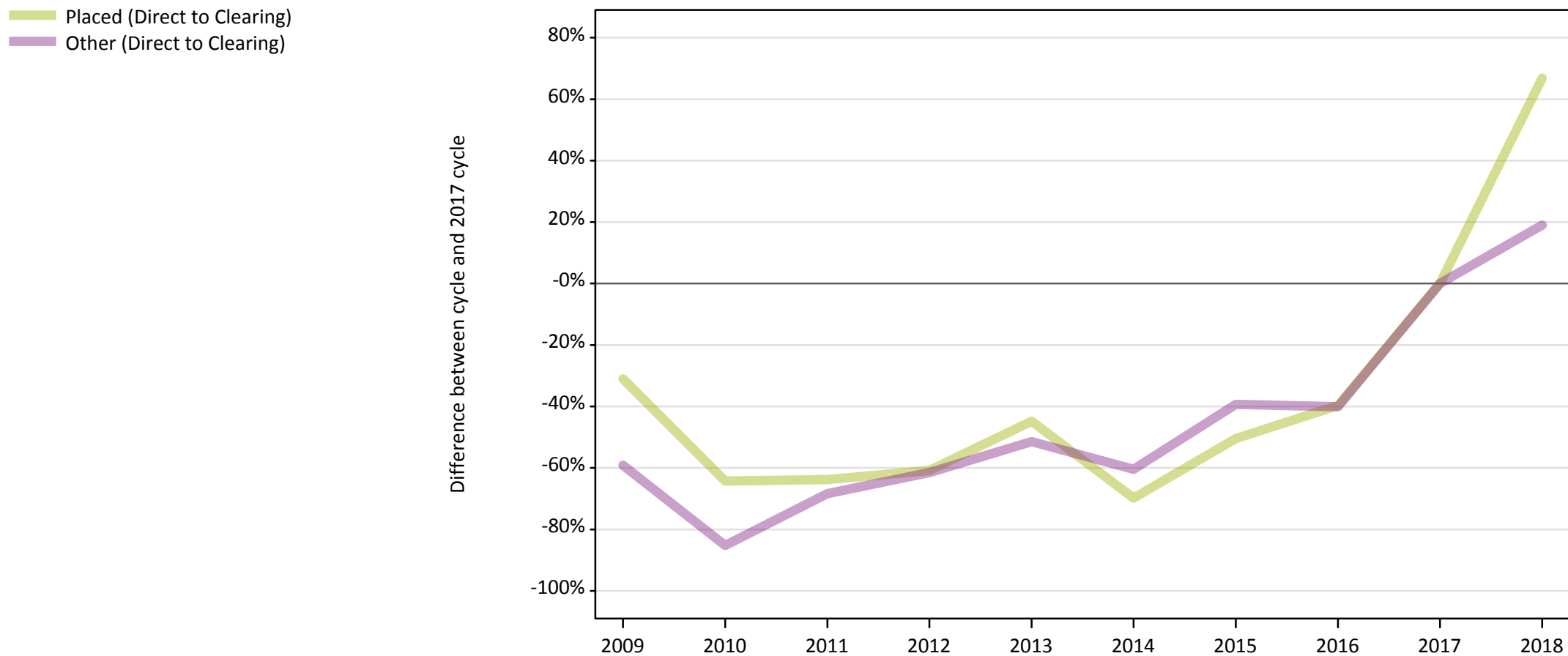
Applicants in unplaced states: difference between cycle and 2017 cycle

Applicant type	Status	2009	2010	2011	2012	2013	2014	2015	2016	2017	2018
Main scheme	Holding offer	-5%	-19%	-37%	-31%	-28%	-22%	-6%	1%	0%	12%
	Free to be placed in Clearing	-7%	62%	82%	69%	69%	73%	60%	53%	0%	-22%

Note: The percentage change is not recorded in the above table for groups with fewer than 10 unplaced applicants in that cycle or in the 2017 cycle.

AB.15 Direct to Clearing applicants from all domiciles: 8 days after A level results day

Direct to Clearing: difference between cycle and 2017 cycle



Note: The percentage change is not plotted in the above chart for groups with fewer than 30 placed applicants in any one cycle.

AB.16 Direct to Clearing applicants from all domiciles: 8 days after A level results day

Direct to Clearing 8 days after A level results day

Applicant type	Status	2009	2010	2011	2012	2013	2014	2015	2016	2017	2018
Direct to Clearing	Placed (Direct to Clearing)	160	80	80	90	130	70	120	140	230	390
	Other (Direct to Clearing)	160	60	120	150	180	150	230	230	380	450

AB.17 Direct to Clearing applicants from all domiciles: 8 days after A level results day

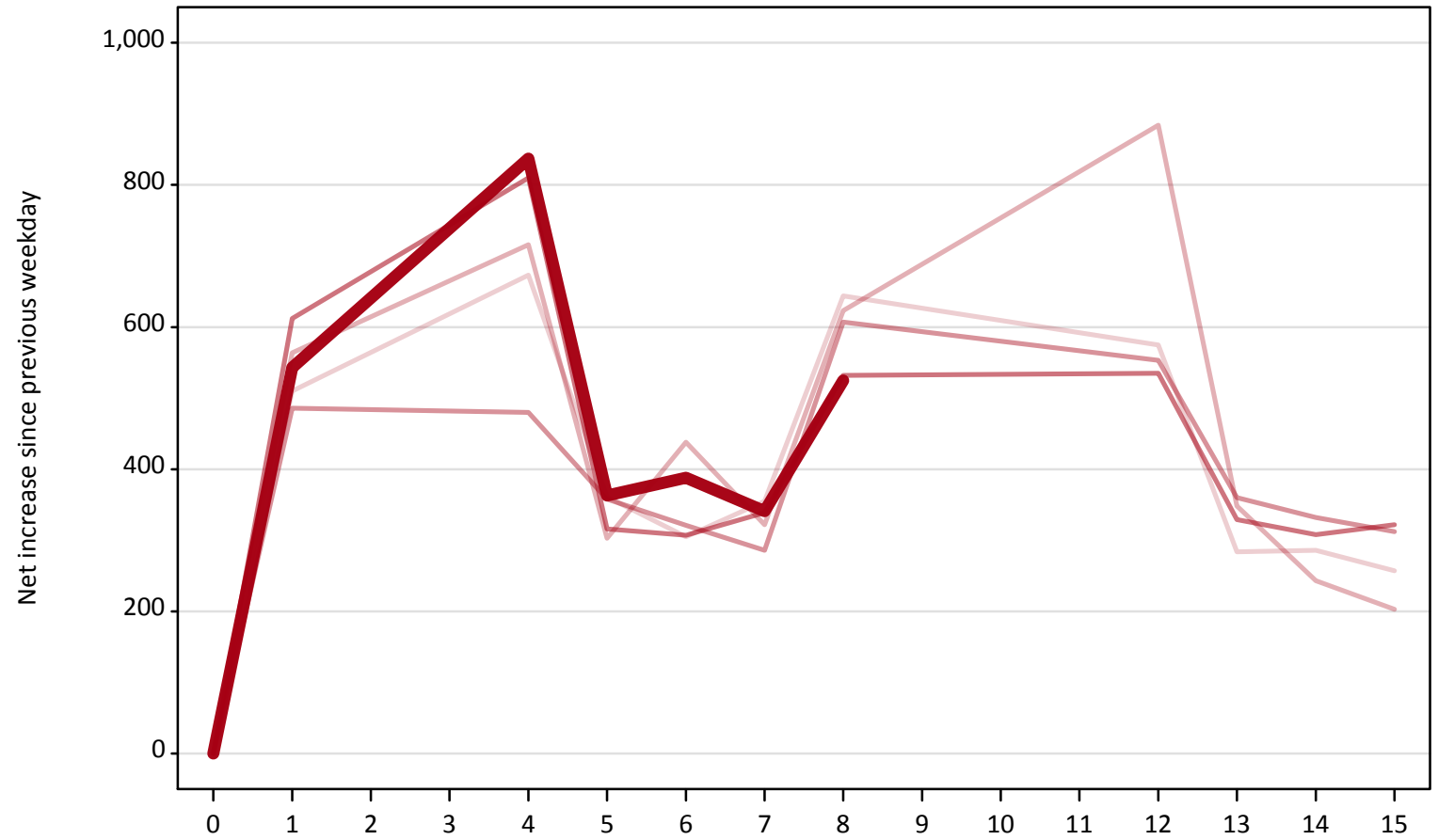
Direct to Clearing: difference between cycle and 2017 cycle

Applicant type	Status	2009	2010	2011	2012	2013	2014	2015	2016	2017	2018
Direct to Clearing	Placed (Direct to Clearing)	-31%	-64%	-64%	-61%	-45%	-70%	-50%	-40%	0%	67%
	Other (Direct to Clearing)	-59%	-85%	-68%	-61%	-51%	-60%	-39%	-40%	0%	19%

Note: The percentage change is not recorded in the above table for groups with fewer than 10 placed applicants in that cycle or in the 2017 cycle.

AB.18 All Placed: Daily net change (from all domiciles)
Net increase since previous weekday (2018 cycle up to 8 days after A level results day)

- 2014
- 2015
- 2016
- 2017
- 2018**

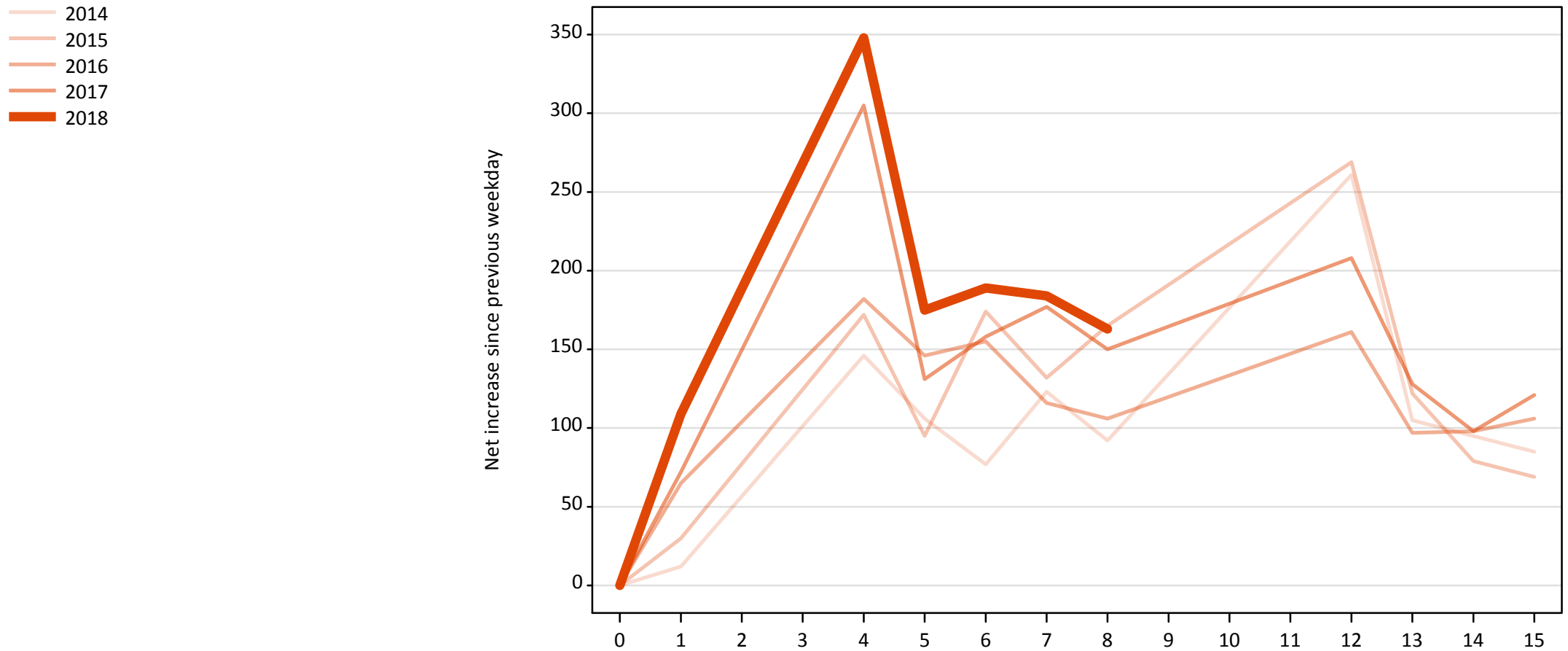


AB.19 All Placed: Daily net change (from all domiciles)

Net increase since previous weekday (2018 cycle up to 8 days after A level results day)

Applicant status, days since A level results day		2014	2015	2016	2017	2018
All Placed	0	0	0	0	0	0
	1	510	560	490	610	540
	4	670	720	480	810	840
	5	360	300	360	320	360
	6	310	440	320	310	390
	7	360	320	290	340	340
	8	640	620	610	530	530
	12	580	880	550	540	
	13	280	350	360	330	
	14	290	240	330	310	
	15	260	200	310	320	

AB.20 Placed through Clearing only: Daily net change (from all domiciles)
Net increase since previous weekday (2018 cycle up to 8 days after A level results day)



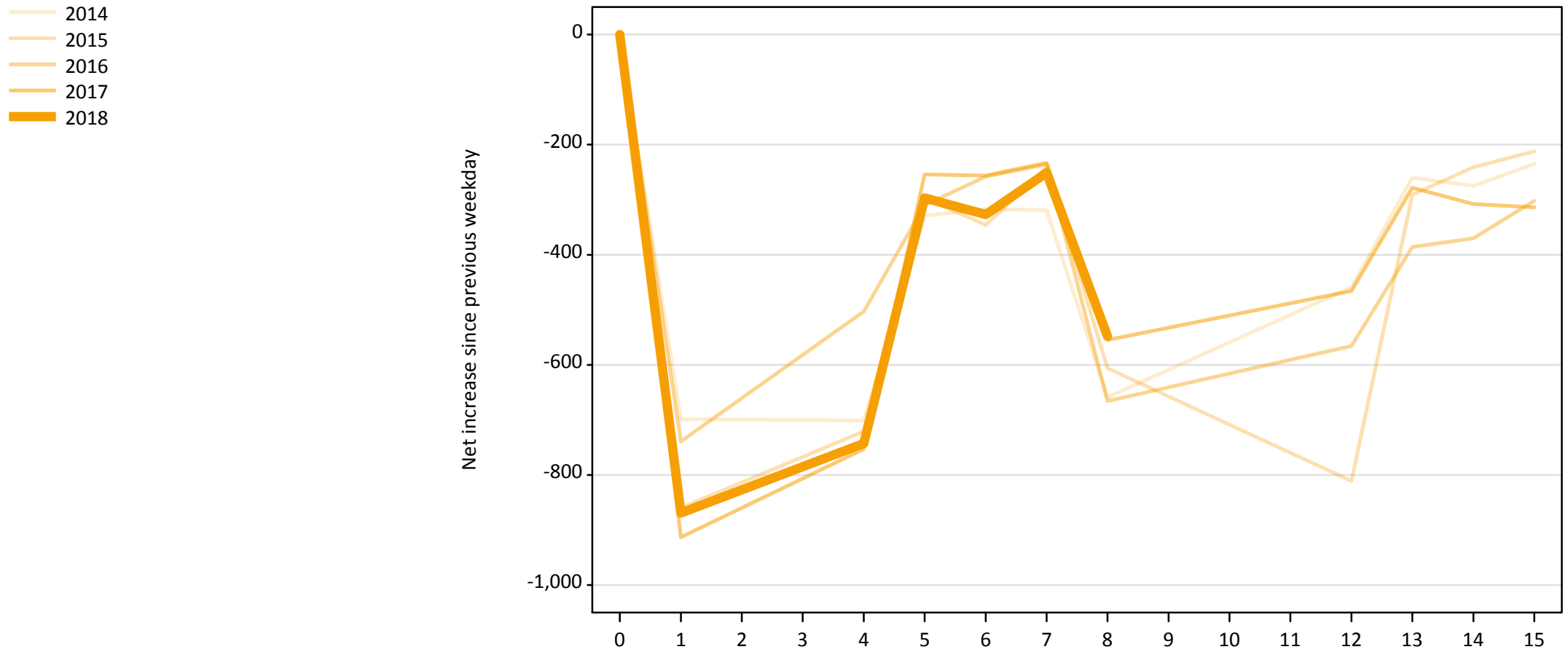
AB.21 Placed through Clearing only: Daily net change (from all domiciles)

Net increase since previous weekday (2018 cycle up to 8 days after A level results day)

Applicant status, days since A level results day		2014	2015	2016	2017	2018
Placed through Clearing only	0	0	0	0	0	0
	1	10	30	70	70	110
	4	150	170	180	310	350
	5	110	100	150	130	180
	6	80	170	160	160	190
	7	120	130	120	180	180
	8	90	170	110	150	160
	12	260	270	160	210	
	13	110	120	100	130	
	14	100	80	100	100	
	15	90	70	110	120	

AB.22 Holding Offer: Daily net change (from all domiciles)

Net increase since previous weekday (2018 cycle up to 8 days after A level results day)



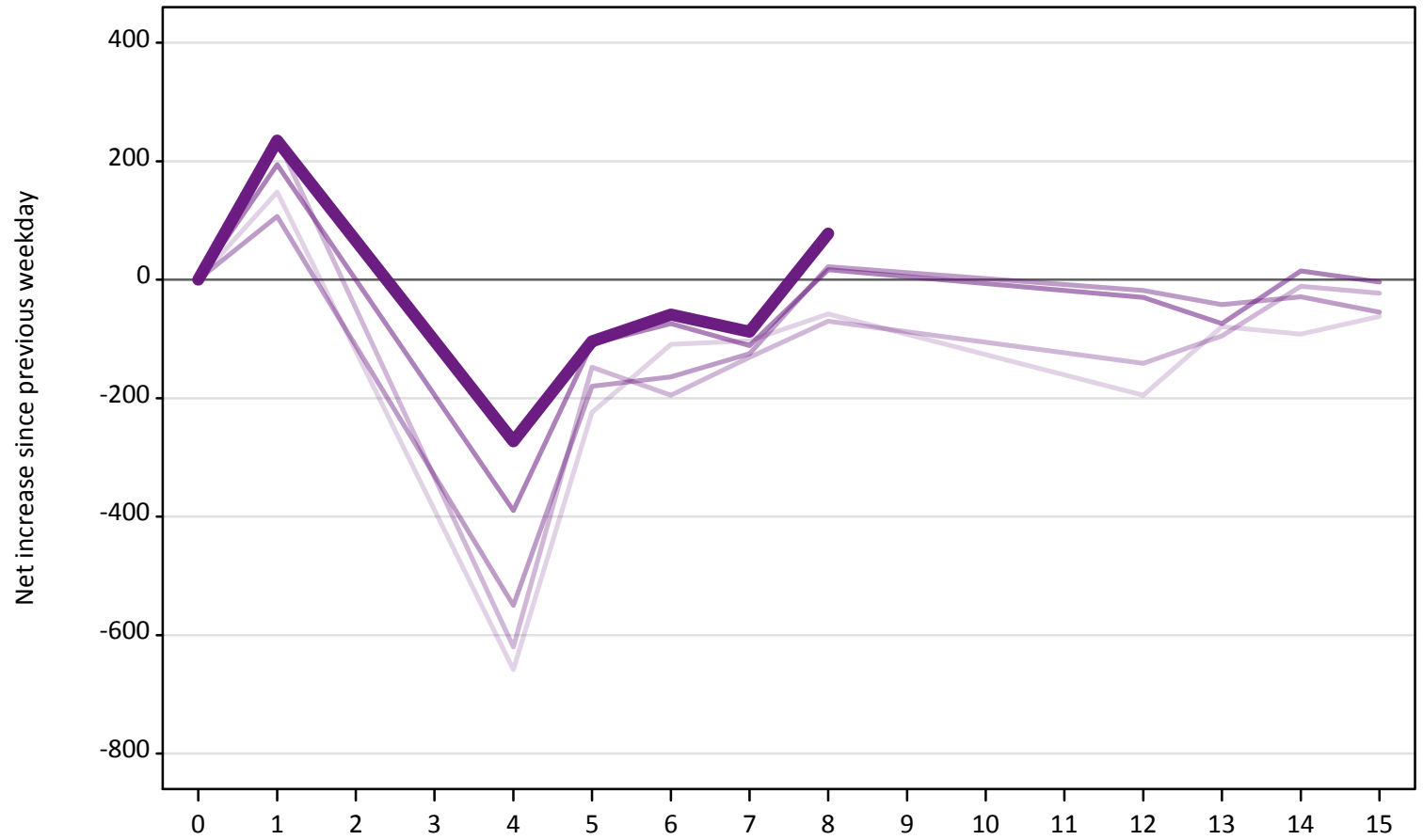
AB.23 Holding Offer: Daily net change (from all domiciles)

Net increase since previous weekday (2018 cycle up to 8 days after A level results day)

Applicant status, days since A level results day	2014	2015	2016	2017	2018	
Holding Offer	0	0	0	0	0	
	1	-700	-860	-740	-910	-870
	4	-700	-720	-500	-750	-740
	5	-330	-300	-310	-250	-300
	6	-320	-350	-260	-260	-330
	7	-320	-240	-240	-230	-250
	8	-660	-610	-670	-560	-550
	12	-460	-810	-570	-470	
	13	-260	-290	-390	-280	
	14	-280	-240	-370	-310	
	15	-240	-210	-300	-310	

AB.24 Free to be placed in Clearing: Daily net change (from all domiciles)
Net increase since previous weekday (2018 cycle up to 8 days after A level results day)

- 2014
- 2015
- 2016
- 2017
- 2018



AB.25 Free to be placed in Clearing: Daily net change (from all domiciles)
 Net increase since previous weekday (2018 cycle up to 8 days after A level results day)

Applicant status, days since A level results day		2014	2015	2016	2017	2018
Free to be placed in Clearing	0	0	0	0	0	0
	1	150	240	110	190	240
	4	-660	-620	-550	-390	-270
	5	-220	-150	-180	-110	-100
	6	-110	-200	-160	-70	-60
	7	-100	-130	-130	-110	-90
	8	-60	-70	20	20	80
	12	-200	-140	-20	-30	
	13	-80	-100	-40	-70	
	14	-90	-10	-30	20	
	15	-60	-20	-60	0	