

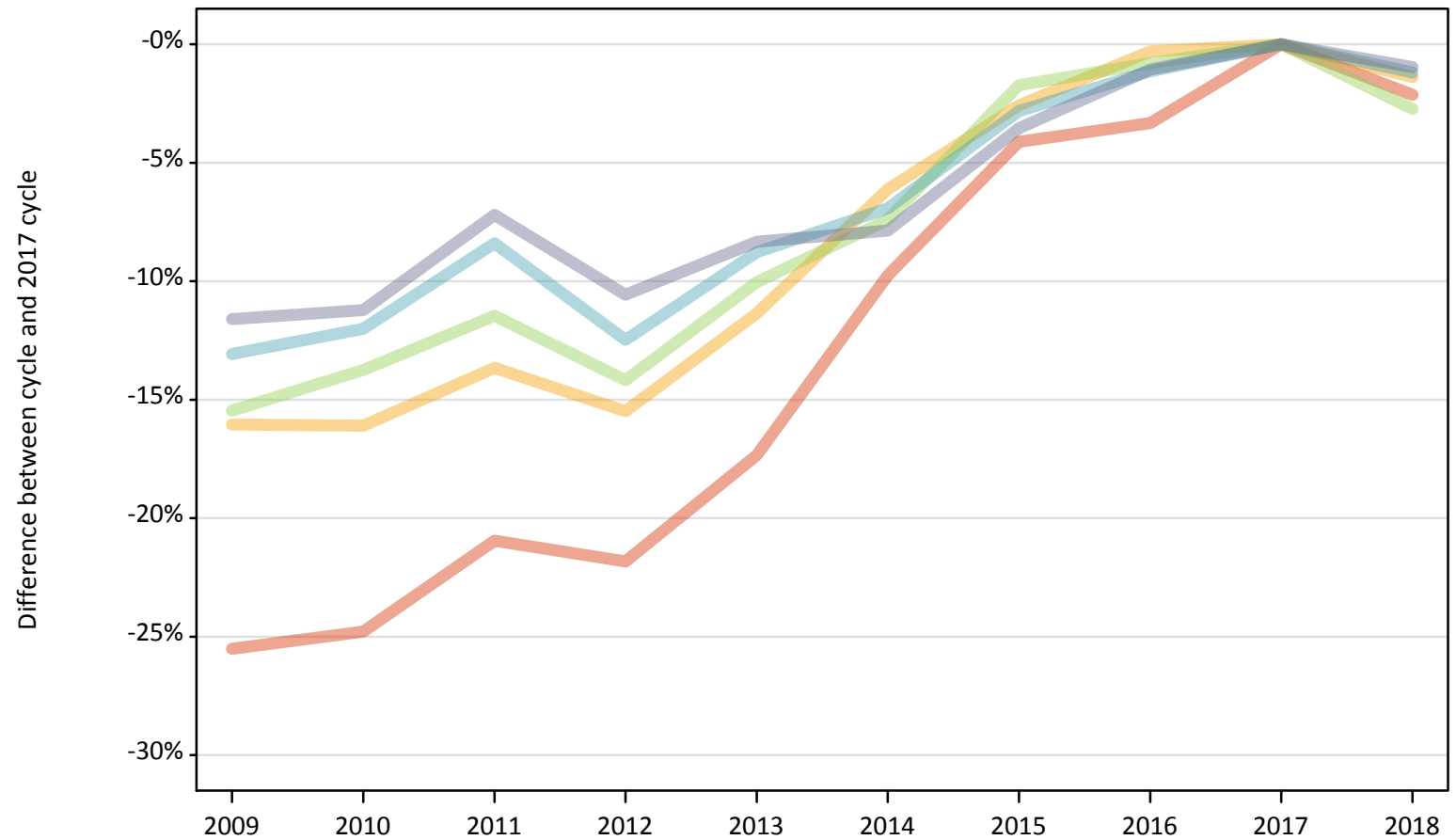
Daily Clearing Analysis: POLAR4

Analysis at 00:05 on Friday 24 August 2018 (8 days after A level results day)

P.1 Placed 18 year old applicants from England by POLAR4 quintile: 8 days after A level results day

Placed 18 year old applicants: change relative to 2017 cycle totals

- Quintile 1
- Quintile 2
- Quintile 3
- Quintile 4
- Quintile 5



Note: The percentage change is not plotted in the above chart for groups with fewer than 30 placed applicants in any one cycle.

P.2 Placed 18 year old applicants from England by POLAR4 quintile: 8 days after A level results day

Applicant Status	POLAR4	2009	2010	2011	2012	2013	2014	2015	2016	2017	2018
Placed	Quintile 1	16,520	16,680	17,540	17,340	18,340	20,020	21,270	21,450	22,180	21,710
	Quintile 2	25,750	25,740	26,490	25,930	27,190	28,800	29,890	30,590	30,680	30,260
	Quintile 3	32,120	32,780	33,640	32,610	34,180	35,180	37,340	37,690	38,000	36,960
	Quintile 4	40,480	40,980	42,650	40,760	42,480	43,340	45,250	46,030	46,570	46,010
	Quintile 5	58,660	58,920	61,580	59,350	60,840	61,140	64,010	65,660	66,360	65,720

P.3 Placed 18 year old applicants from England by POLAR4 quintile: 8 days after A level results day

Placed 18 year old applicants: change relative to 2017 cycle totals

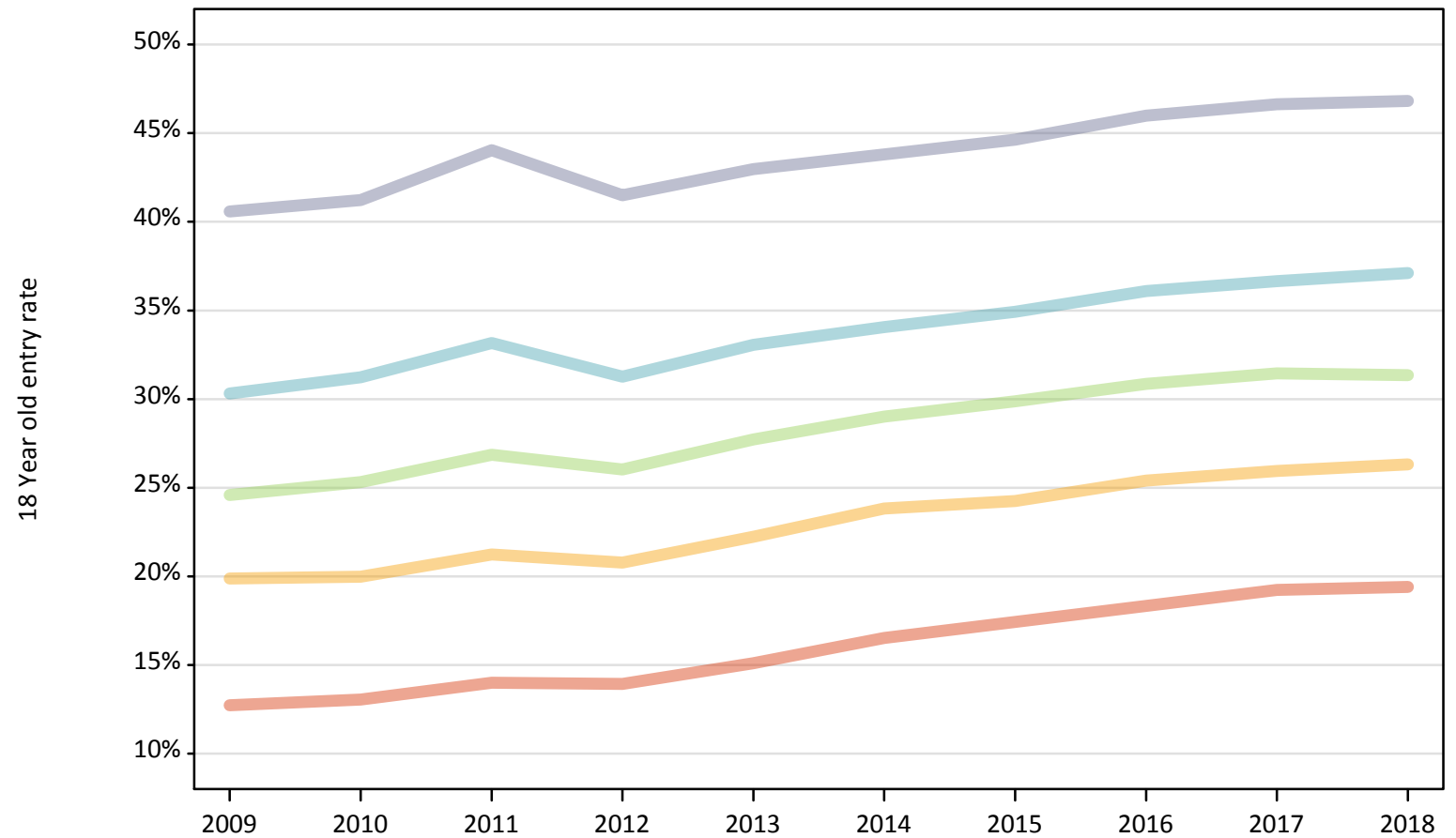
Applicant Status	POLAR4	2009	2010	2011	2012	2013	2014	2015	2016	2017	2018
Placed	Quintile 1	-26%	-25%	-21%	-22%	-17%	-10%	-4%	-3%	0%	-2%
	Quintile 2	-16%	-16%	-14%	-15%	-11%	-6%	-3%	-0%	0%	-1%
	Quintile 3	-15%	-14%	-11%	-14%	-10%	-7%	-2%	-1%	0%	-3%
	Quintile 4	-13%	-12%	-8%	-12%	-9%	-7%	-3%	-1%	0%	-1%
	Quintile 5	-12%	-11%	-7%	-11%	-8%	-8%	-4%	-1%	0%	-1%

Note: The percentage change is not recorded in the above table for groups with fewer than 10 placed applicants in that cycle or in the 2017 cycle.

P.4 Placed 18 year old applicants from England by POLAR4 quintile: 8 days after A level results day

Placed 18 year old applicants: entry rate

- Quintile 1
- Quintile 2
- Quintile 3
- Quintile 4
- Quintile 5



P.5 Placed 18 year old applicants from England by POLAR4 quintile: 8 days after A level results day

Placed 18 year old applicants: entry rate

Applicant Status	POLAR4	2009	2010	2011	2012	2013	2014	2015	2016	2017	2018
Placed	Quintile 1	12.7%	13.0%	14.0%	13.9%	15.1%	16.5%	17.4%	18.3%	19.2%	19.4%
	Quintile 2	19.9%	20.0%	21.2%	20.8%	22.2%	23.8%	24.3%	25.4%	25.9%	26.3%
	Quintile 3	24.6%	25.3%	26.9%	26.0%	27.7%	29.0%	29.9%	30.9%	31.4%	31.3%
	Quintile 4	30.3%	31.2%	33.2%	31.3%	33.1%	34.1%	34.9%	36.1%	36.6%	37.1%
	Quintile 5	40.6%	41.2%	44.0%	41.5%	43.0%	43.8%	44.6%	46.0%	46.6%	46.8%

P.6 Placed 18 year old applicants from England by POLAR4 quintile: 8 days after A level results day

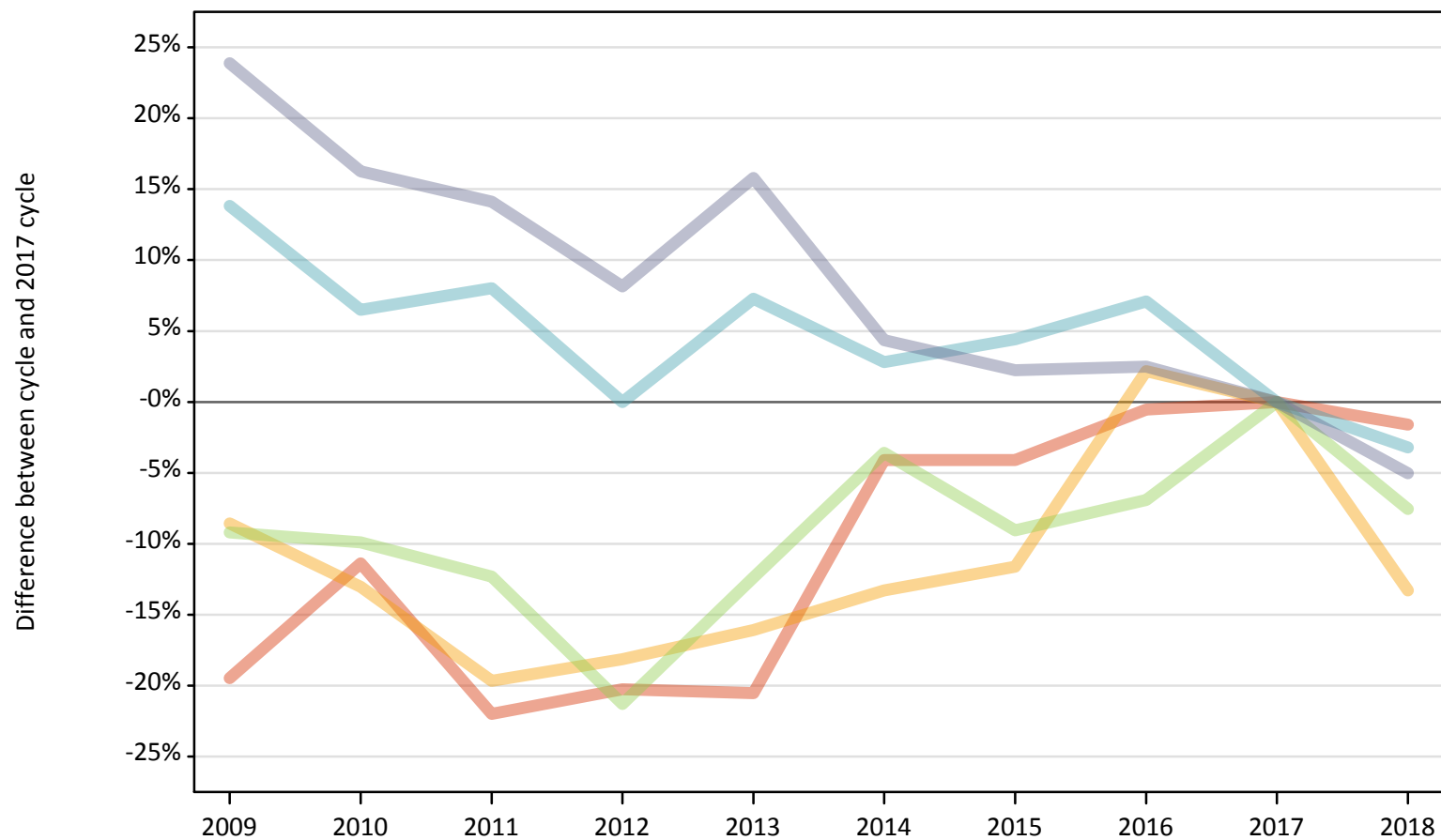
Placed 18 year old applicants: entry rate (indexed to 100 = Quintile 1)

Applicant Status	POLAR4	2009	2010	2011	2012	2013	2014	2015	2016	2017	2018
Placed	Quintile 1	100	100	100	100	100	100	100	100	100	100
	Quintile 2	156	153	152	149	147	144	139	139	135	136
	Quintile 3	193	194	192	187	184	176	172	168	164	162
	Quintile 4	238	239	237	224	219	206	201	197	191	191
	Quintile 5	319	316	314	298	285	265	256	251	243	241

P.7 Placed 18 year old applicants from Northern Ireland by POLAR4 quintile: 8 days after A level results day

Placed 18 year old applicants: change relative to 2017 cycle totals

- Quintile 1
- Quintile 2
- Quintile 3
- Quintile 4
- Quintile 5



Note: The percentage change is not plotted in the above chart for groups with fewer than 30 placed applicants in any one cycle.

P.8 Placed 18 year old applicants from Northern Ireland by POLAR4 quintile: 8 days after A level results day

Applicant Status	POLAR4	2009	2010	2011	2012	2013	2014	2015	2016	2017	2018
Placed	Quintile 1	610	670	590	600	600	720	720	750	760	740
	Quintile 2	720	680	630	640	660	680	690	800	780	680
	Quintile 3	1,310	1,300	1,270	1,140	1,270	1,390	1,320	1,350	1,450	1,340
	Quintile 4	2,310	2,170	2,200	2,030	2,180	2,090	2,120	2,180	2,030	1,970
	Quintile 5	4,090	3,840	3,770	3,570	3,820	3,440	3,370	3,380	3,300	3,130

P.9 Placed 18 year old applicants from Northern Ireland by POLAR4 quintile: 8 days after A level results day

Placed 18 year old applicants: change relative to 2017 cycle totals

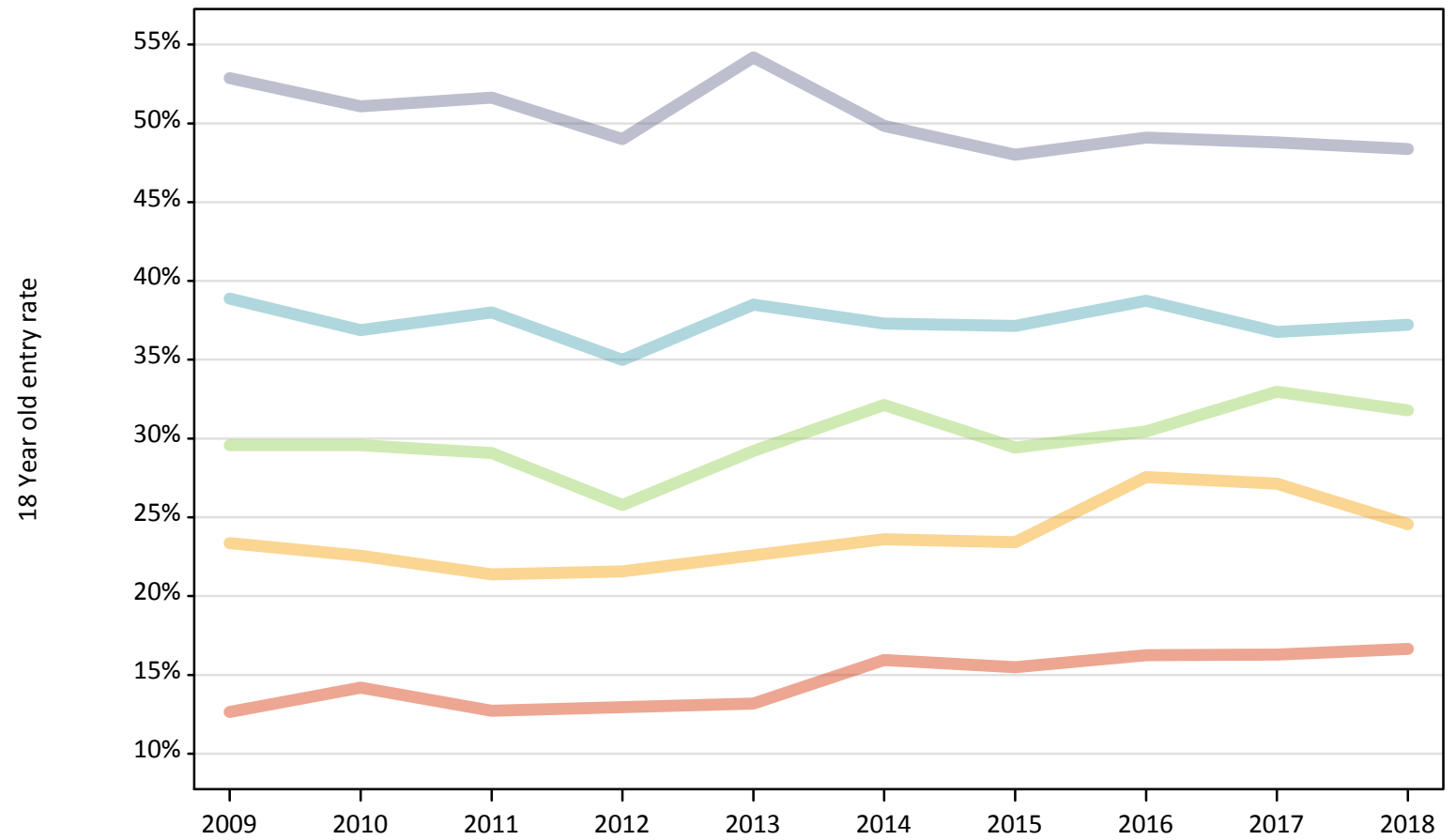
Applicant Status	POLAR4	2009	2010	2011	2012	2013	2014	2015	2016	2017	2018
Placed	Quintile 1	-19%	-11%	-22%	-20%	-21%	-4%	-4%	-1%	0%	-2%
	Quintile 2	-9%	-13%	-20%	-18%	-16%	-13%	-12%	2%	0%	-13%
	Quintile 3	-9%	-10%	-12%	-21%	-12%	-4%	-9%	-7%	0%	-8%
	Quintile 4	14%	6%	8%	0%	7%	3%	4%	7%	0%	-3%
	Quintile 5	24%	16%	14%	8%	16%	4%	2%	2%	0%	-5%

Note: The percentage change is not recorded in the above table for groups with fewer than 10 placed applicants in that cycle or in the 2017 cycle.

P.10 Placed 18 year old applicants from Northern Ireland by POLAR4 quintile: 8 days after A level results day

Placed 18 year old applicants: entry rate

- Quintile 1
- Quintile 2
- Quintile 3
- Quintile 4
- Quintile 5



P.11 Placed 18 year old applicants from Northern Ireland by POLAR4 quintile: 8 days after A level results day

Placed 18 year old applicants: entry rate

Applicant Status	POLAR4	2009	2010	2011	2012	2013	2014	2015	2016	2017	2018
Placed	Quintile 1	12.6%	14.2%	12.7%	12.9%	13.2%	15.9%	15.5%	16.2%	16.3%	16.7%
	Quintile 2	23.4%	22.6%	21.4%	21.6%	22.6%	23.6%	23.4%	27.5%	27.1%	24.6%
	Quintile 3	29.6%	29.6%	29.1%	25.8%	29.2%	32.1%	29.4%	30.5%	33.0%	31.8%
	Quintile 4	38.9%	36.9%	38.0%	35.0%	38.5%	37.3%	37.1%	38.7%	36.8%	37.2%
	Quintile 5	52.9%	51.1%	51.6%	49.0%	54.2%	49.8%	48.0%	49.1%	48.8%	48.4%

P.12 Placed 18 year old applicants from Northern Ireland by POLAR4 quintile: 8 days after A level results day

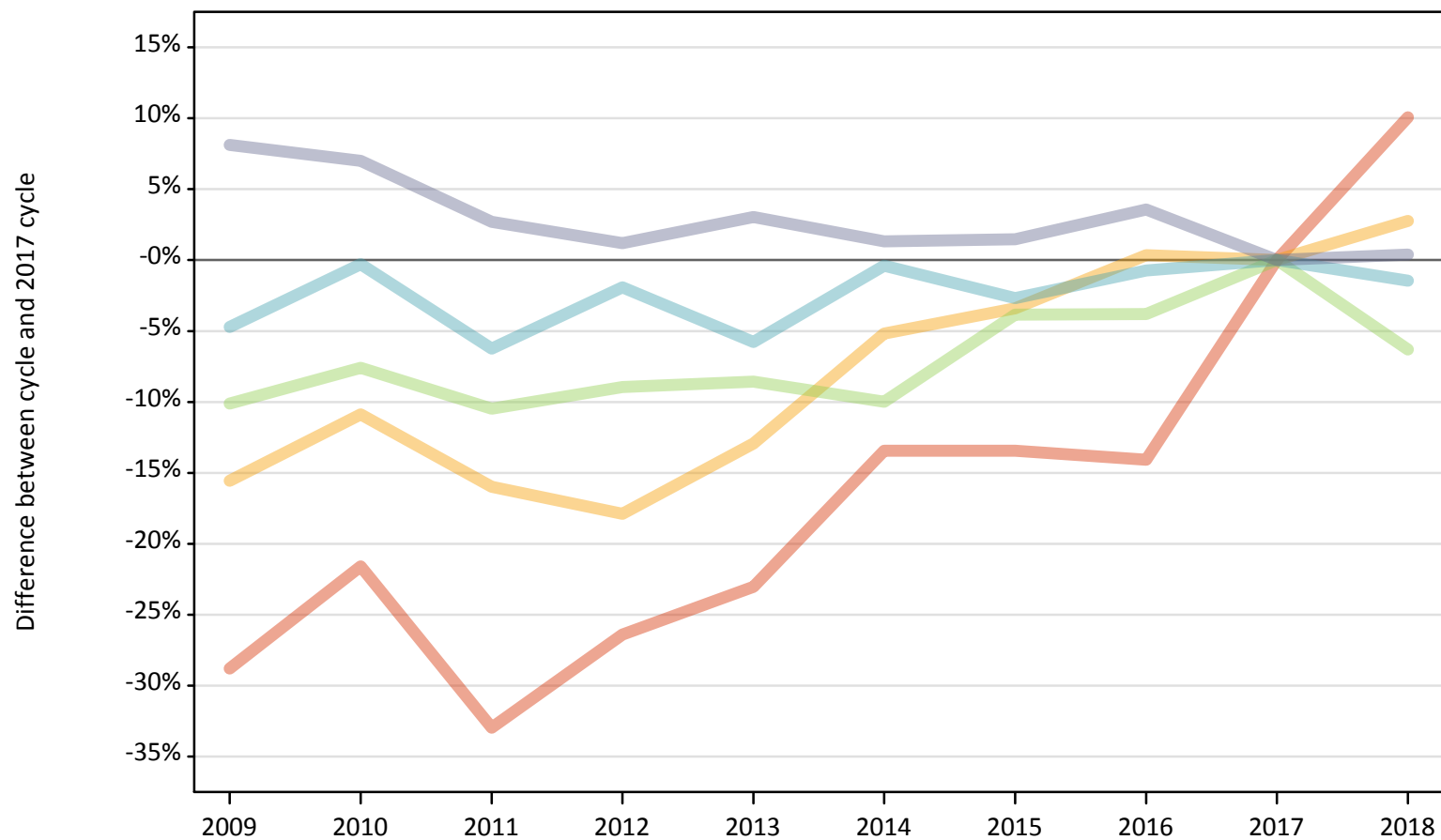
Placed 18 year old applicants: entry rate (indexed to 100 = Quintile 1)

Applicant Status	POLAR4	2009	2010	2011	2012	2013	2014	2015	2016	2017	2018
Placed	Quintile 1	100	100	100	100	100	100	100	100	100	100
	Quintile 2	185	159	168	167	171	148	151	170	167	147
	Quintile 3	234	208	229	199	222	201	190	187	203	191
	Quintile 4	307	260	299	271	292	234	240	239	226	223
	Quintile 5	418	360	406	379	411	313	310	302	300	290

P.13 Placed 18 year old applicants from Scotland by POLAR4 quintile: 8 days after A level results day

Placed 18 year old applicants: change relative to 2017 cycle totals

- Quintile 1
- Quintile 2
- Quintile 3
- Quintile 4
- Quintile 5



Note: The percentage change is not plotted in the above chart for groups with fewer than 30 placed applicants in any one cycle.

P.14 Placed 18 year old applicants from Scotland by POLAR4 quintile: 8 days after A level results day

Applicant Status	POLAR4	2009	2010	2011	2012	2013	2014	2015	2016	2017	2018
Placed	Quintile 1	450	490	420	460	480	540	540	540	630	690
	Quintile 2	1,190	1,260	1,180	1,160	1,230	1,340	1,360	1,410	1,410	1,450
	Quintile 3	2,150	2,210	2,140	2,180	2,190	2,160	2,300	2,300	2,390	2,240
	Quintile 4	3,240	3,390	3,180	3,330	3,200	3,380	3,310	3,370	3,400	3,350
	Quintile 5	7,300	7,230	6,940	6,840	6,960	6,840	6,860	7,000	6,760	6,780

P.15 Placed 18 year old applicants from Scotland by POLAR4 quintile: 8 days after A level results day

Placed 18 year old applicants: change relative to 2017 cycle totals

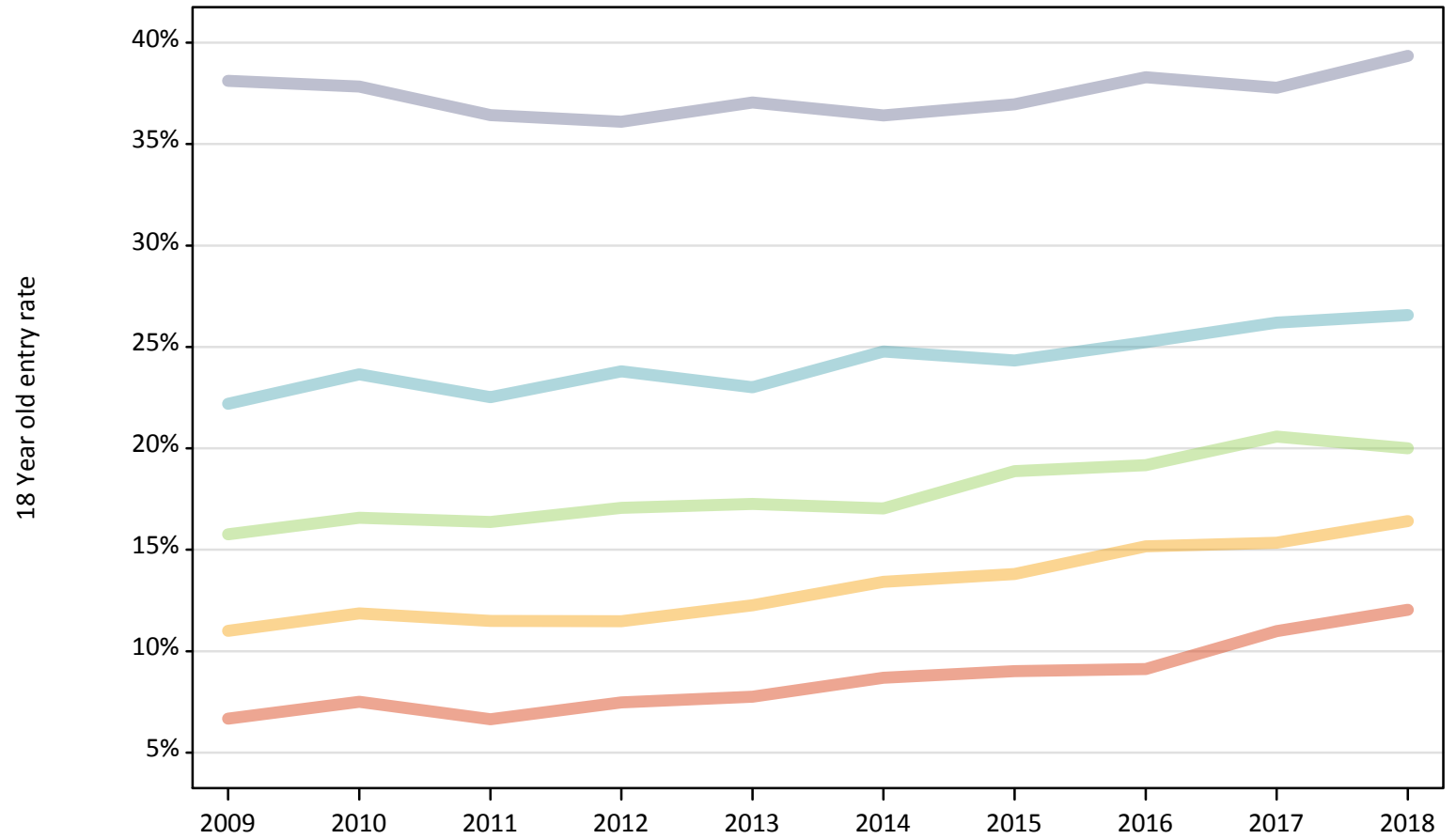
Applicant Status	POLAR4	2009	2010	2011	2012	2013	2014	2015	2016	2017	2018
Placed	Quintile 1	-29%	-22%	-33%	-26%	-23%	-13%	-13%	-14%	0%	10%
	Quintile 2	-16%	-11%	-16%	-18%	-13%	-5%	-3%	0%	0%	3%
	Quintile 3	-10%	-8%	-10%	-9%	-9%	-10%	-4%	-4%	0%	-6%
	Quintile 4	-5%	-0%	-6%	-2%	-6%	-0%	-3%	-1%	0%	-1%
	Quintile 5	8%	7%	3%	1%	3%	1%	1%	4%	0%	0%

Note: The percentage change is not recorded in the above table for groups with fewer than 10 placed applicants in that cycle or in the 2017 cycle.

P.16 Placed 18 year old applicants from Scotland by POLAR4 quintile: 8 days after A level results day

Placed 18 year old applicants: entry rate

- Quintile 1
- Quintile 2
- Quintile 3
- Quintile 4
- Quintile 5



P.17 Placed 18 year old applicants from Scotland by POLAR4 quintile: 8 days after A level results day

Placed 18 year old applicants: entry rate

Applicant Status	POLAR4	2009	2010	2011	2012	2013	2014	2015	2016	2017	2018
Placed	Quintile 1	6.7%	7.5%	6.6%	7.5%	7.8%	8.7%	9.0%	9.1%	11.0%	12.0%
	Quintile 2	11.0%	11.9%	11.5%	11.5%	12.3%	13.4%	13.8%	15.2%	15.3%	16.4%
	Quintile 3	15.8%	16.6%	16.4%	17.1%	17.3%	17.0%	18.9%	19.2%	20.6%	20.0%
	Quintile 4	22.2%	23.6%	22.5%	23.8%	23.0%	24.8%	24.3%	25.2%	26.2%	26.6%
	Quintile 5	38.1%	37.8%	36.4%	36.1%	37.0%	36.4%	37.0%	38.3%	37.8%	39.3%

P.18 Placed 18 year old applicants from Scotland by POLAR4 quintile: 8 days after A level results day

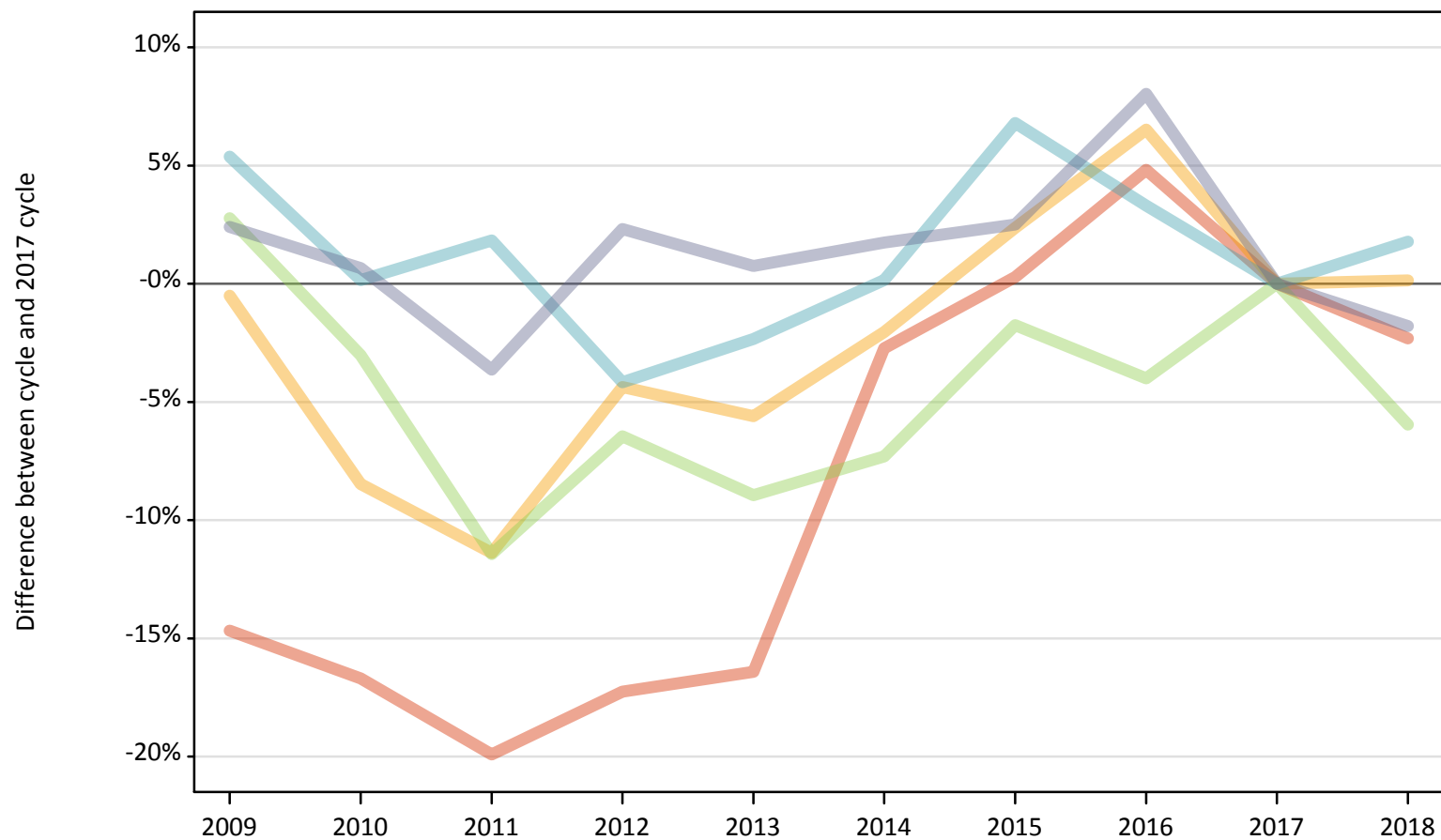
Placed 18 year old applicants: entry rate (indexed to 100 = Quintile 1)

Applicant Status	POLAR4	2009	2010	2011	2012	2013	2014	2015	2016	2017	2018
Placed	Quintile 1	100	100	100	100	100	100	100	100	100	100
	Quintile 2	165	158	173	154	158	155	153	166	140	136
	Quintile 3	236	221	246	229	223	196	209	210	187	166
	Quintile 4	333	315	339	319	297	285	270	277	238	221
	Quintile 5	571	505	548	483	478	419	410	420	344	327

P.19 Placed 18 year old applicants from Wales by POLAR4 quintile: 8 days after A level results day

Placed 18 year old applicants: change relative to 2017 cycle totals

- Quintile 1
- Quintile 2
- Quintile 3
- Quintile 4
- Quintile 5



Note: The percentage change is not plotted in the above chart for groups with fewer than 30 placed applicants in any one cycle.

P.20 Placed 18 year old applicants from Wales by POLAR4 quintile: 8 days after A level results day

Applicant Status	POLAR4	2009	2010	2011	2012	2013	2014	2015	2016	2017	2018
Placed	Quintile 1	1,220	1,190	1,150	1,180	1,200	1,390	1,440	1,500	1,430	1,400
	Quintile 2	2,180	2,010	1,950	2,100	2,070	2,150	2,250	2,340	2,200	2,200
	Quintile 3	2,520	2,380	2,170	2,290	2,230	2,270	2,410	2,350	2,450	2,300
	Quintile 4	2,080	1,970	2,010	1,890	1,920	1,970	2,100	2,040	1,970	2,010
	Quintile 5	2,170	2,130	2,040	2,170	2,130	2,150	2,170	2,290	2,120	2,080

P.21 Placed 18 year old applicants from Wales by POLAR4 quintile: 8 days after A level results day

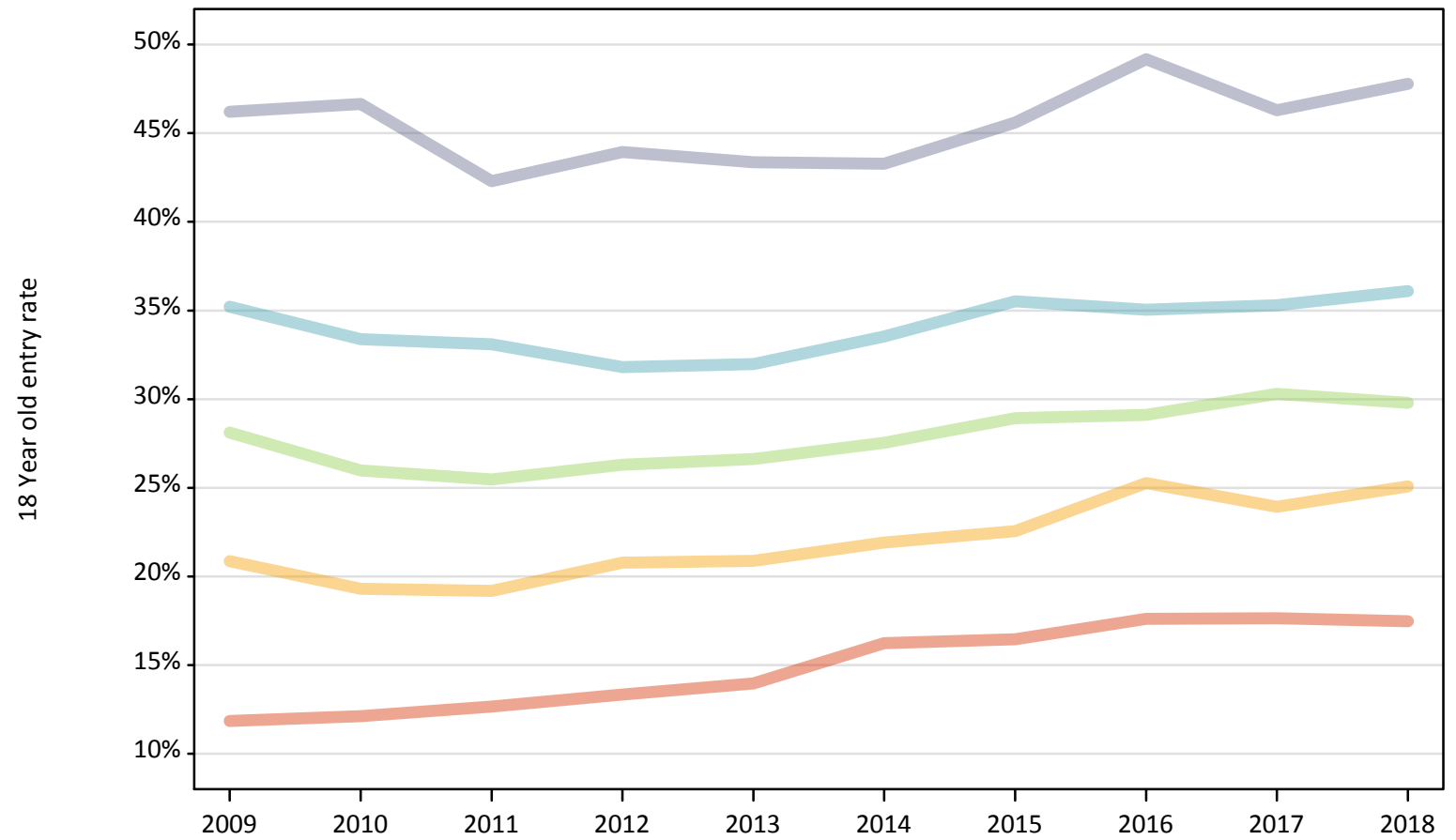
Placed 18 year old applicants: change relative to 2017 cycle totals

Applicant Status	POLAR4	2009	2010	2011	2012	2013	2014	2015	2016	2017	2018
Placed	Quintile 1	-15%	-17%	-20%	-17%	-16%	-3%	0%	5%	0%	-2%
	Quintile 2	-1%	-8%	-11%	-4%	-6%	-2%	2%	7%	0%	0%
	Quintile 3	3%	-3%	-11%	-6%	-9%	-7%	-2%	-4%	0%	-6%
	Quintile 4	5%	0%	2%	-4%	-2%	0%	7%	3%	0%	2%
	Quintile 5	2%	1%	-4%	2%	1%	2%	3%	8%	0%	-2%

Note: The percentage change is not recorded in the above table for groups with fewer than 10 placed applicants in that cycle or in the 2017 cycle.

P.22 Placed 18 year old applicants from Wales by POLAR4 quintile: 8 days after A level results day
Placed 18 year old applicants: entry rate

- Quintile 1
- Quintile 2
- Quintile 3
- Quintile 4
- Quintile 5



P.23 Placed 18 year old applicants from Wales by POLAR4 quintile: 8 days after A level results day

Placed 18 year old applicants: entry rate

Applicant Status	POLAR4	2009	2010	2011	2012	2013	2014	2015	2016	2017	2018
Placed	Quintile 1	11.8%	12.1%	12.7%	13.3%	14.0%	16.2%	16.5%	17.6%	17.6%	17.5%
	Quintile 2	20.9%	19.3%	19.2%	20.8%	20.9%	21.9%	22.6%	25.3%	23.9%	25.1%
	Quintile 3	28.1%	26.0%	25.5%	26.3%	26.6%	27.5%	28.9%	29.1%	30.3%	29.8%
	Quintile 4	35.2%	33.4%	33.1%	31.8%	32.0%	33.5%	35.5%	35.0%	35.3%	36.1%
	Quintile 5	46.2%	46.6%	42.3%	43.9%	43.4%	43.3%	45.6%	49.2%	46.3%	47.8%

P.24 Placed 18 year old applicants from Wales by POLAR4 quintile: 8 days after A level results day

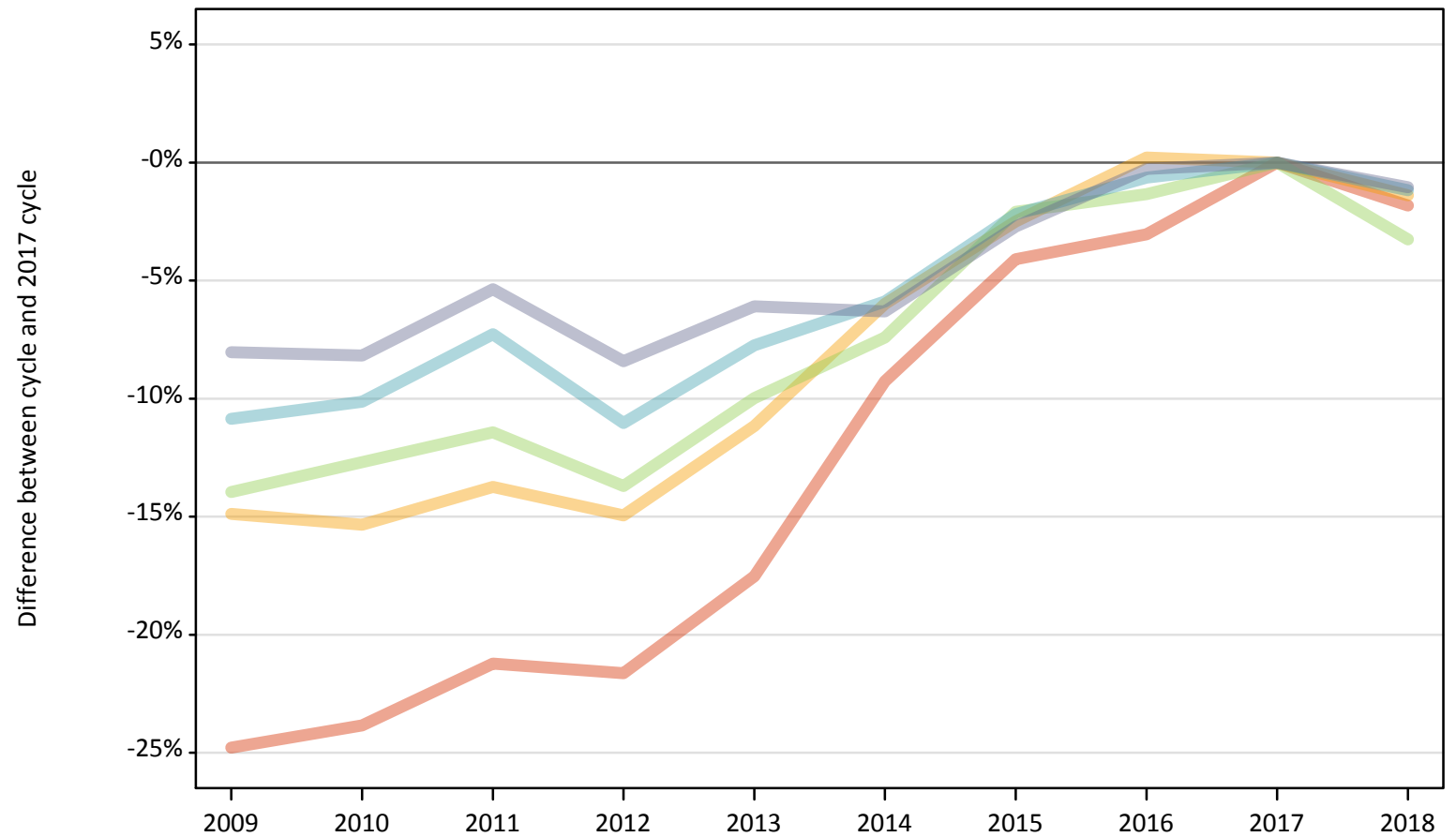
Placed 18 year old applicants: entry rate (indexed to 100 = Quintile 1)

Applicant Status	POLAR4	2009	2010	2011	2012	2013	2014	2015	2016	2017	2018
Placed	Quintile 1	100	100	100	100	100	100	100	100	100	100
	Quintile 2	176	159	152	156	150	135	137	143	136	144
	Quintile 3	237	214	201	197	191	170	176	165	172	170
	Quintile 4	297	275	262	238	229	207	216	199	200	207
	Quintile 5	390	385	334	329	311	267	277	279	262	273

P.25 Placed 18 year old applicants from the UK by POLAR4 quintile: 8 days after A level results day

Placed 18 year old applicants: change relative to 2017 cycle totals

- Quintile 1
- Quintile 2
- Quintile 3
- Quintile 4
- Quintile 5



Note: The percentage change is not plotted in the above chart for groups with fewer than 30 placed applicants in any one cycle.

P.26 Placed 18 year old applicants from the UK by POLAR4 quintile: 8 days after A level results day

Applicant Status	POLAR4	2009	2010	2011	2012	2013	2014	2015	2016	2017	2018
Placed	Quintile 1	18,800	19,030	19,690	19,590	20,610	22,680	23,970	24,230	24,990	24,540
	Quintile 2	29,840	29,680	30,250	29,820	31,150	32,960	34,190	35,140	35,060	34,580
	Quintile 3	38,110	38,670	39,220	38,220	39,870	41,000	43,360	43,690	44,290	42,840
	Quintile 4	48,100	48,500	50,040	48,010	49,780	50,790	52,790	53,620	53,970	53,330
	Quintile 5	72,220	72,110	74,320	71,920	73,750	73,580	76,410	78,320	78,540	77,720

P.27 Placed 18 year old applicants from the UK by POLAR4 quintile: 8 days after A level results day

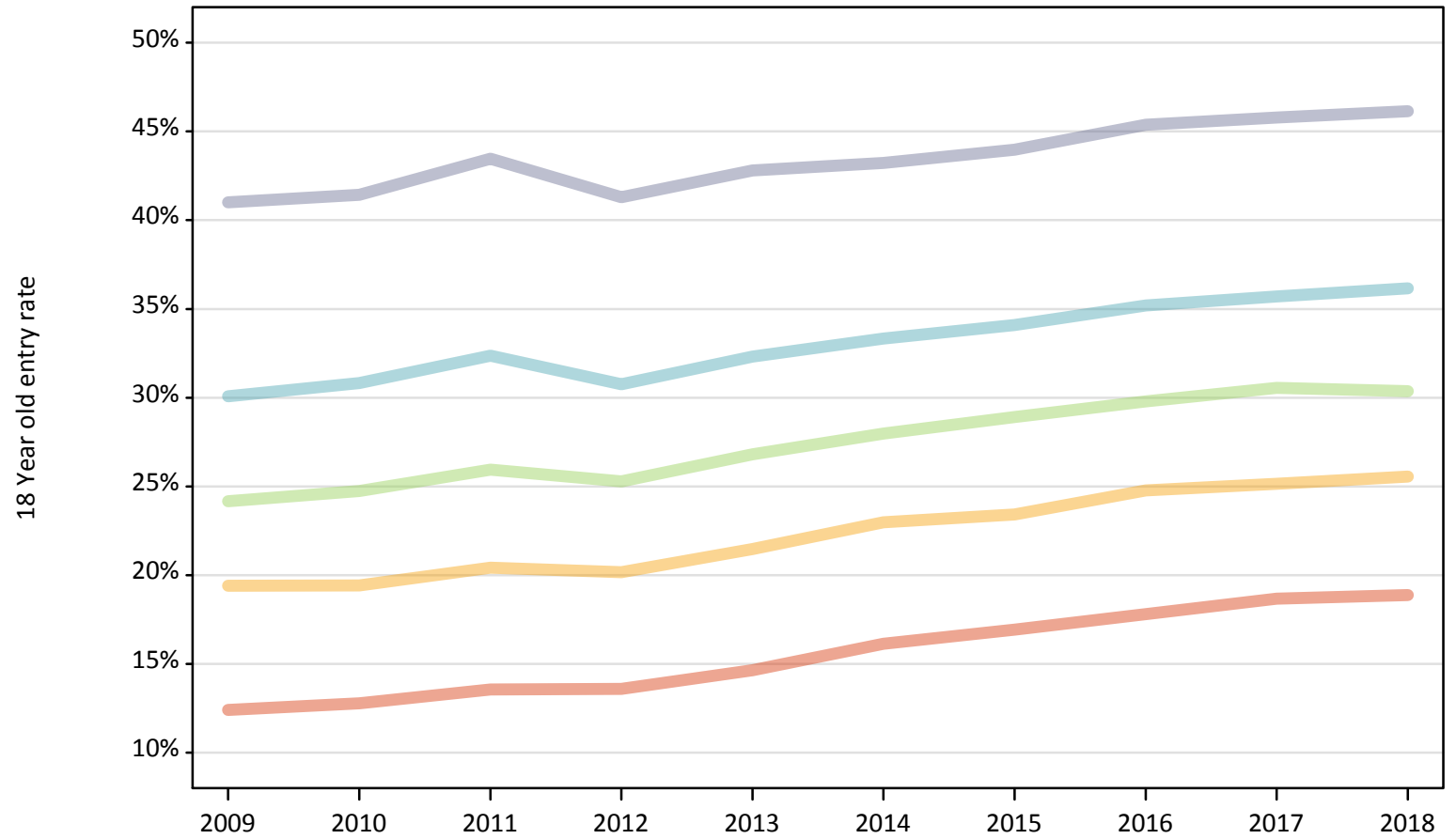
Placed 18 year old applicants: change relative to 2017 cycle totals

Applicant Status	POLAR4	2009	2010	2011	2012	2013	2014	2015	2016	2017	2018
Placed	Quintile 1	-25%	-24%	-21%	-22%	-18%	-9%	-4%	-3%	0%	-2%
	Quintile 2	-15%	-15%	-14%	-15%	-11%	-6%	-3%	0%	0%	-1%
	Quintile 3	-14%	-13%	-11%	-14%	-10%	-7%	-2%	-1%	0%	-3%
	Quintile 4	-11%	-10%	-7%	-11%	-8%	-6%	-2%	-1%	0%	-1%
	Quintile 5	-8%	-8%	-5%	-8%	-6%	-6%	-3%	-0%	0%	-1%

Note: The percentage change is not recorded in the above table for groups with fewer than 10 placed applicants in that cycle or in the 2017 cycle.

P.28 Placed 18 year old applicants from the UK by POLAR4 quintile: 8 days after A level results day
Placed 18 year old applicants: entry rate

- Quintile 1
- Quintile 2
- Quintile 3
- Quintile 4
- Quintile 5



P.29 Placed 18 year old applicants from the UK by POLAR4 quintile: 8 days after A level results day

Placed 18 year old applicants: entry rate

Applicant Status	POLAR4	2009	2010	2011	2012	2013	2014	2015	2016	2017	2018
Placed	Quintile 1	12.4%	12.8%	13.6%	13.6%	14.6%	16.1%	16.9%	17.8%	18.7%	18.9%
	Quintile 2	19.4%	19.4%	20.4%	20.2%	21.5%	23.0%	23.4%	24.8%	25.1%	25.6%
	Quintile 3	24.2%	24.7%	25.9%	25.3%	26.8%	28.0%	28.9%	29.8%	30.6%	30.4%
	Quintile 4	30.1%	30.8%	32.4%	30.8%	32.3%	33.3%	34.1%	35.2%	35.7%	36.2%
	Quintile 5	41.0%	41.4%	43.5%	41.3%	42.8%	43.2%	44.0%	45.4%	45.8%	46.1%

P.30 Placed 18 year old applicants from the UK by POLAR4 quintile: 8 days after A level results day

Placed 18 year old applicants: entry rate (indexed to 100 = Quintile 1)

Applicant Status	POLAR4	2009	2010	2011	2012	2013	2014	2015	2016	2017	2018
Placed	Quintile 1	100	100	100	100	100	100	100	100	100	100
	Quintile 2	156	152	151	148	147	142	138	139	135	135
	Quintile 3	195	194	191	186	183	173	171	167	164	161
	Quintile 4	242	241	239	226	221	207	201	198	191	192
	Quintile 5	331	324	320	304	292	268	260	255	245	244