

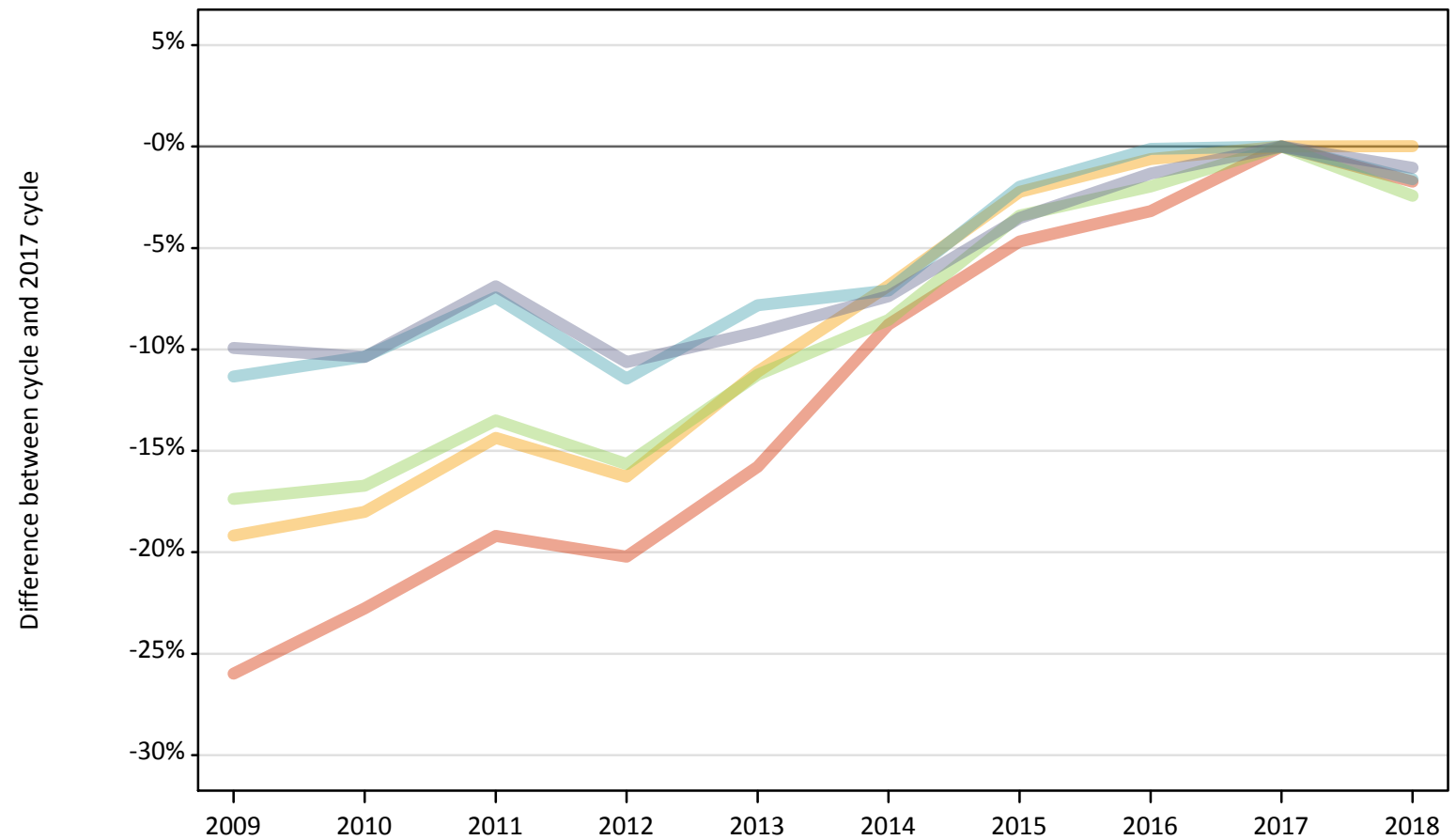
Daily Clearing Analysis: POLAR3

Analysis at 00:05 on Friday 24 August 2018 (8 days after A level results day)

P.1 Placed 18 year old applicants from England by POLAR3 quintile: 8 days after A level results day

Placed 18 year old applicants: change relative to 2017 cycle totals

- Quintile 1
- Quintile 2
- Quintile 3
- Quintile 4
- Quintile 5



Note: The percentage change is not plotted in the above chart for groups with fewer than 30 placed applicants in any one cycle.

P.2 Placed 18 year old applicants from England by POLAR3 quintile: 8 days after A level results day

Applicant Status	POLAR3	2009	2010	2011	2012	2013	2014	2015	2016	2017	2018
Placed	Quintile 1	16,860	17,590	18,410	18,170	19,180	20,780	21,710	22,050	22,780	22,380
	Quintile 2	25,390	25,750	26,900	26,300	27,930	29,260	30,710	31,220	31,410	31,420
	Quintile 3	33,470	33,740	35,040	34,170	35,960	37,050	39,130	39,710	40,510	39,530
	Quintile 4	41,410	41,870	43,230	41,360	43,050	43,390	45,780	46,650	46,700	45,960
	Quintile 5	56,420	56,140	58,330	55,980	56,920	58,020	60,430	61,810	62,640	61,980

P.3 Placed 18 year old applicants from England by POLAR3 quintile: 8 days after A level results day

Placed 18 year old applicants: change relative to 2017 cycle totals

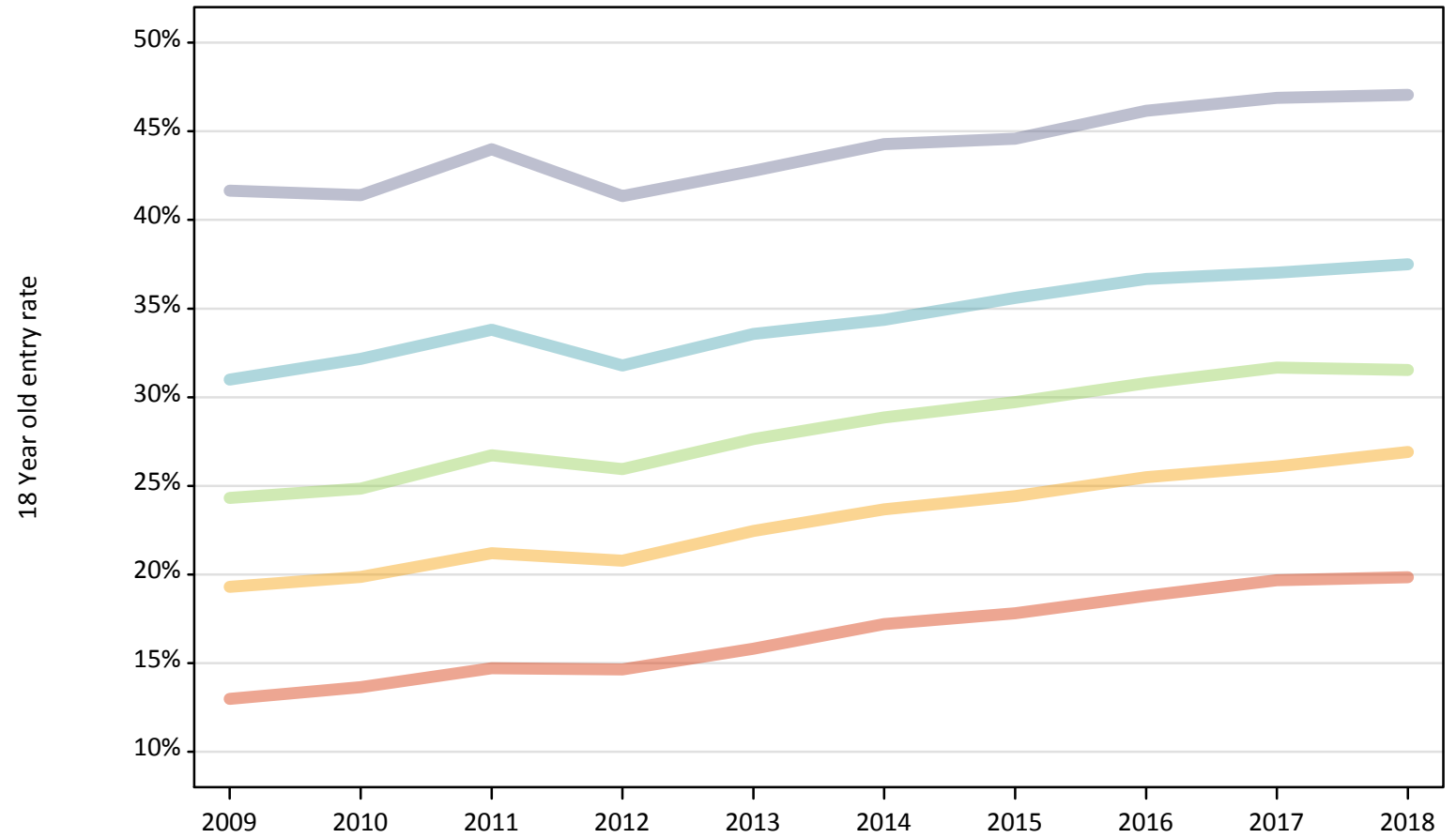
Applicant Status	POLAR3	2009	2010	2011	2012	2013	2014	2015	2016	2017	2018
Placed	Quintile 1	-26%	-23%	-19%	-20%	-16%	-9%	-5%	-3%	0%	-2%
	Quintile 2	-19%	-18%	-14%	-16%	-11%	-7%	-2%	-1%	0%	0%
	Quintile 3	-17%	-17%	-14%	-16%	-11%	-9%	-3%	-2%	0%	-2%
	Quintile 4	-11%	-10%	-7%	-11%	-8%	-7%	-2%	-0%	0%	-2%
	Quintile 5	-10%	-10%	-7%	-11%	-9%	-7%	-4%	-1%	0%	-1%

Note: The percentage change is not recorded in the above table for groups with fewer than 10 placed applicants in that cycle or in the 2017 cycle.

P.4 Placed 18 year old applicants from England by POLAR3 quintile: 8 days after A level results day

Placed 18 year old applicants: entry rate

- Quintile 1
- Quintile 2
- Quintile 3
- Quintile 4
- Quintile 5



P.5 Placed 18 year old applicants from England by POLAR3 quintile: 8 days after A level results day

Placed 18 year old applicants: entry rate

Applicant Status	POLAR3	2009	2010	2011	2012	2013	2014	2015	2016	2017	2018
Placed	Quintile 1	13.0%	13.6%	14.7%	14.6%	15.8%	17.2%	17.8%	18.8%	19.7%	19.8%
	Quintile 2	19.3%	19.9%	21.2%	20.8%	22.5%	23.7%	24.4%	25.5%	26.1%	26.9%
	Quintile 3	24.3%	24.8%	26.7%	25.9%	27.6%	28.9%	29.7%	30.8%	31.7%	31.5%
	Quintile 4	31.0%	32.2%	33.8%	31.8%	33.6%	34.4%	35.6%	36.7%	37.0%	37.5%
	Quintile 5	41.7%	41.4%	44.0%	41.4%	42.8%	44.3%	44.6%	46.2%	46.9%	47.1%

P.6 Placed 18 year old applicants from England by POLAR3 quintile: 8 days after A level results day

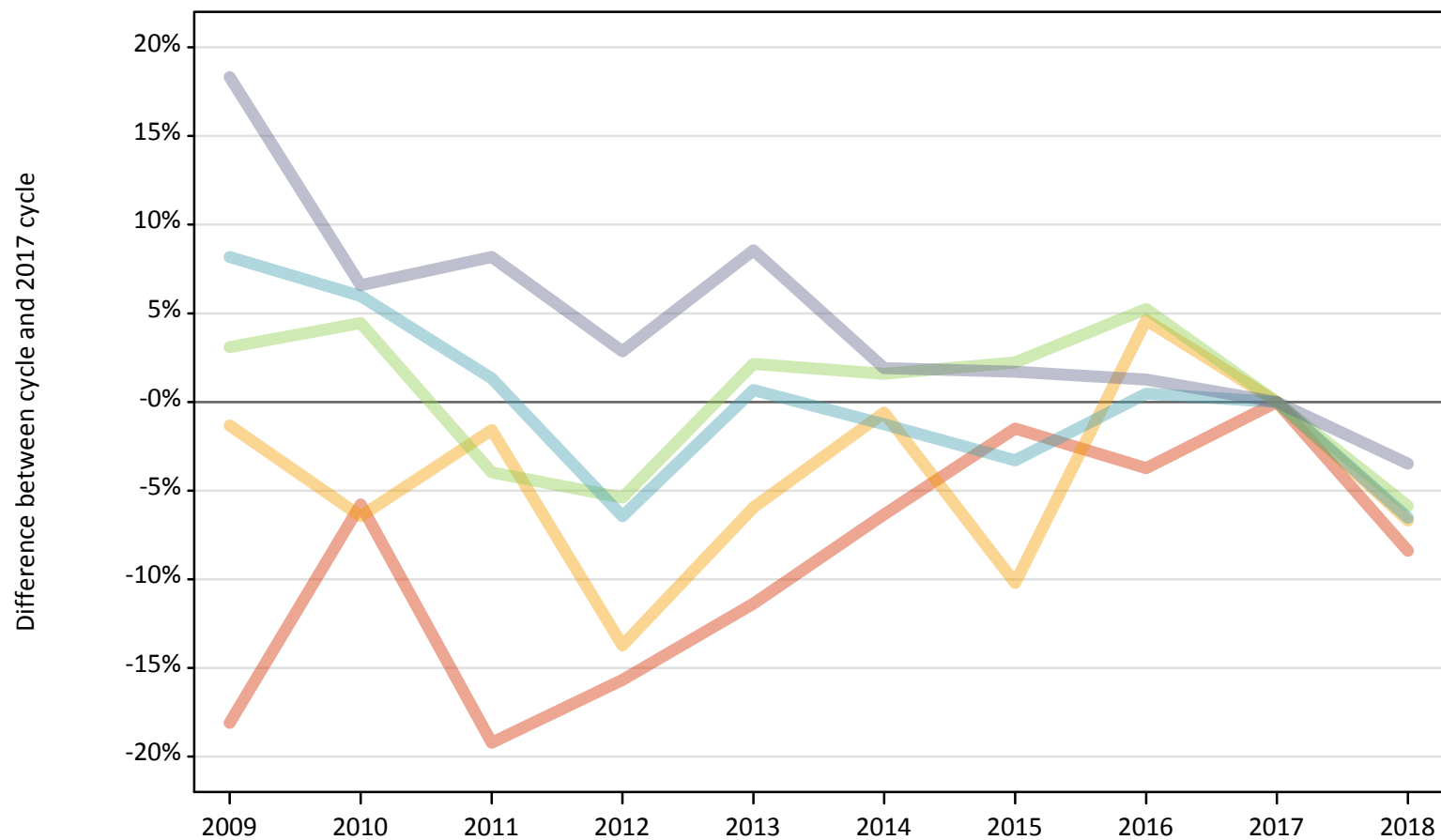
Placed 18 year old applicants: entry rate (indexed to 100 = Quintile 1)

Applicant Status	POLAR3	2009	2010	2011	2012	2013	2014	2015	2016	2017	2018
Placed	Quintile 1	100	100	100	100	100	100	100	100	100	100
	Quintile 2	149	146	144	142	142	138	137	136	133	136
	Quintile 3	187	182	182	177	175	168	167	164	161	159
	Quintile 4	239	236	230	217	212	200	200	195	188	189
	Quintile 5	321	304	299	282	270	258	250	246	238	237

P.7 Placed 18 year old applicants from Northern Ireland by POLAR3 quintile: 8 days after A level results day

Placed 18 year old applicants: change relative to 2017 cycle totals

- Quintile 1
- Quintile 2
- Quintile 3
- Quintile 4
- Quintile 5



Note: The percentage change is not plotted in the above chart for groups with fewer than 30 placed applicants in any one cycle.

P.8 Placed 18 year old applicants from Northern Ireland by POLAR3 quintile: 8 days after A level results day

Applicant Status	POLAR3	2009	2010	2011	2012	2013	2014	2015	2016	2017	2018
Placed	Quintile 1	440	510	430	450	480	500	530	520	540	490
	Quintile 2	810	770	810	710	770	820	740	860	820	770
	Quintile 3	1,300	1,320	1,210	1,190	1,290	1,280	1,290	1,330	1,260	1,190
	Quintile 4	2,750	2,700	2,580	2,380	2,560	2,510	2,460	2,560	2,550	2,380
	Quintile 5	3,740	3,370	3,420	3,250	3,430	3,220	3,210	3,200	3,160	3,050

P.9 Placed 18 year old applicants from Northern Ireland by POLAR3 quintile: 8 days after A level results day

Placed 18 year old applicants: change relative to 2017 cycle totals

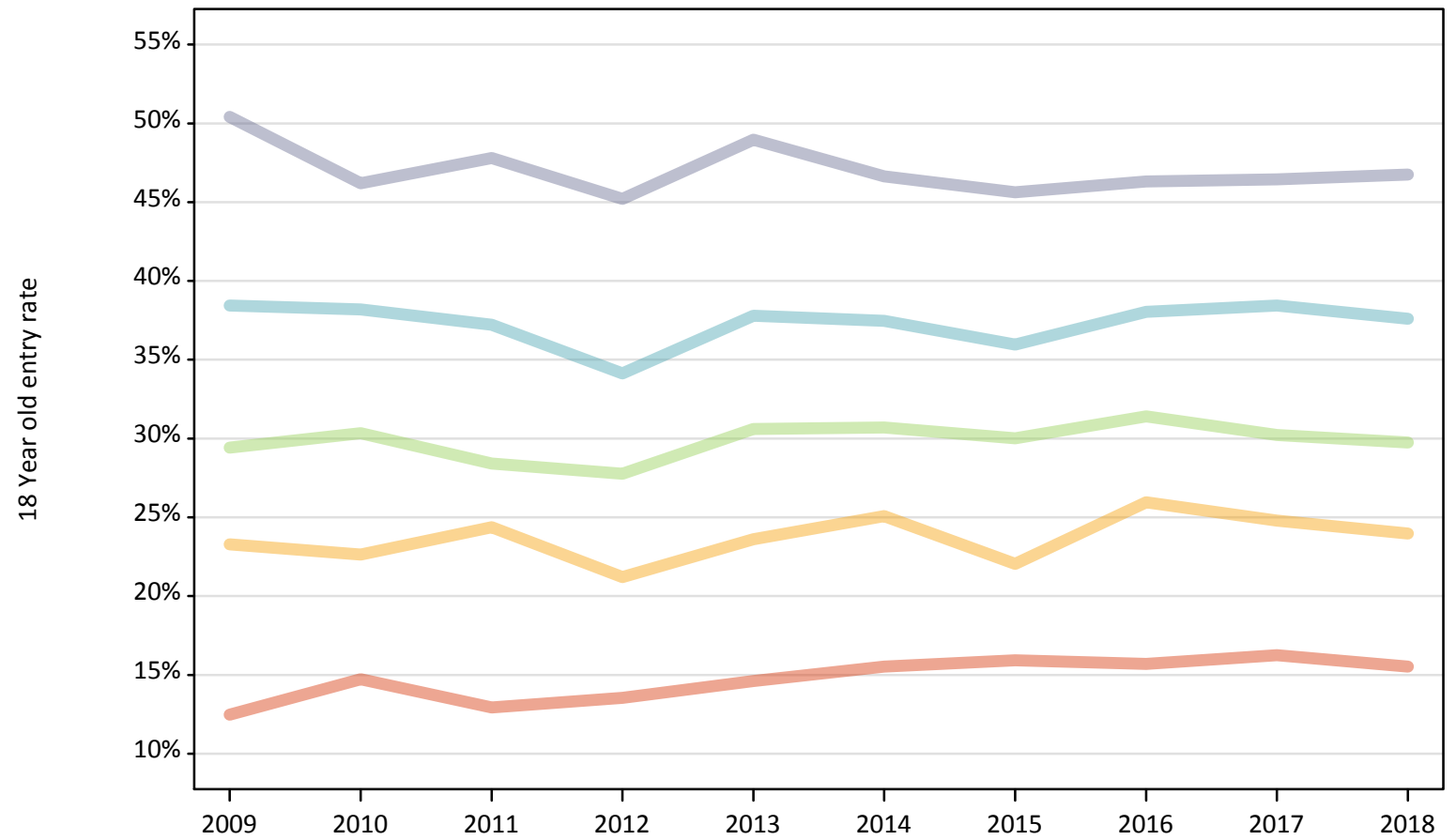
Applicant Status	POLAR3	2009	2010	2011	2012	2013	2014	2015	2016	2017	2018
Placed	Quintile 1	-18%	-6%	-19%	-16%	-11%	-6%	-1%	-4%	0%	-8%
	Quintile 2	-1%	-6%	-2%	-14%	-6%	-1%	-10%	5%	0%	-7%
	Quintile 3	3%	4%	-4%	-5%	2%	2%	2%	5%	0%	-6%
	Quintile 4	8%	6%	1%	-6%	1%	-1%	-3%	0%	0%	-7%
	Quintile 5	18%	7%	8%	3%	9%	2%	2%	1%	0%	-3%

Note: The percentage change is not recorded in the above table for groups with fewer than 10 placed applicants in that cycle or in the 2017 cycle.

P.10 Placed 18 year old applicants from Northern Ireland by POLAR3 quintile: 8 days after A level results day

Placed 18 year old applicants: entry rate

- Quintile 1
- Quintile 2
- Quintile 3
- Quintile 4
- Quintile 5



P.11 Placed 18 year old applicants from Northern Ireland by POLAR3 quintile: 8 days after A level results day

Placed 18 year old applicants: entry rate

Applicant Status	POLAR3	2009	2010	2011	2012	2013	2014	2015	2016	2017	2018
Placed	Quintile 1	12.5%	14.7%	12.9%	13.5%	14.6%	15.5%	15.9%	15.7%	16.3%	15.5%
	Quintile 2	23.3%	22.6%	24.4%	21.2%	23.6%	25.1%	22.1%	26.0%	24.8%	24.0%
	Quintile 3	29.4%	30.3%	28.4%	27.8%	30.6%	30.7%	30.0%	31.4%	30.2%	29.8%
	Quintile 4	38.4%	38.2%	37.2%	34.1%	37.8%	37.5%	36.0%	38.0%	38.4%	37.6%
	Quintile 5	50.4%	46.2%	47.8%	45.2%	49.0%	46.6%	45.6%	46.3%	46.5%	46.7%

P.12 Placed 18 year old applicants from Northern Ireland by POLAR3 quintile: 8 days after A level results day

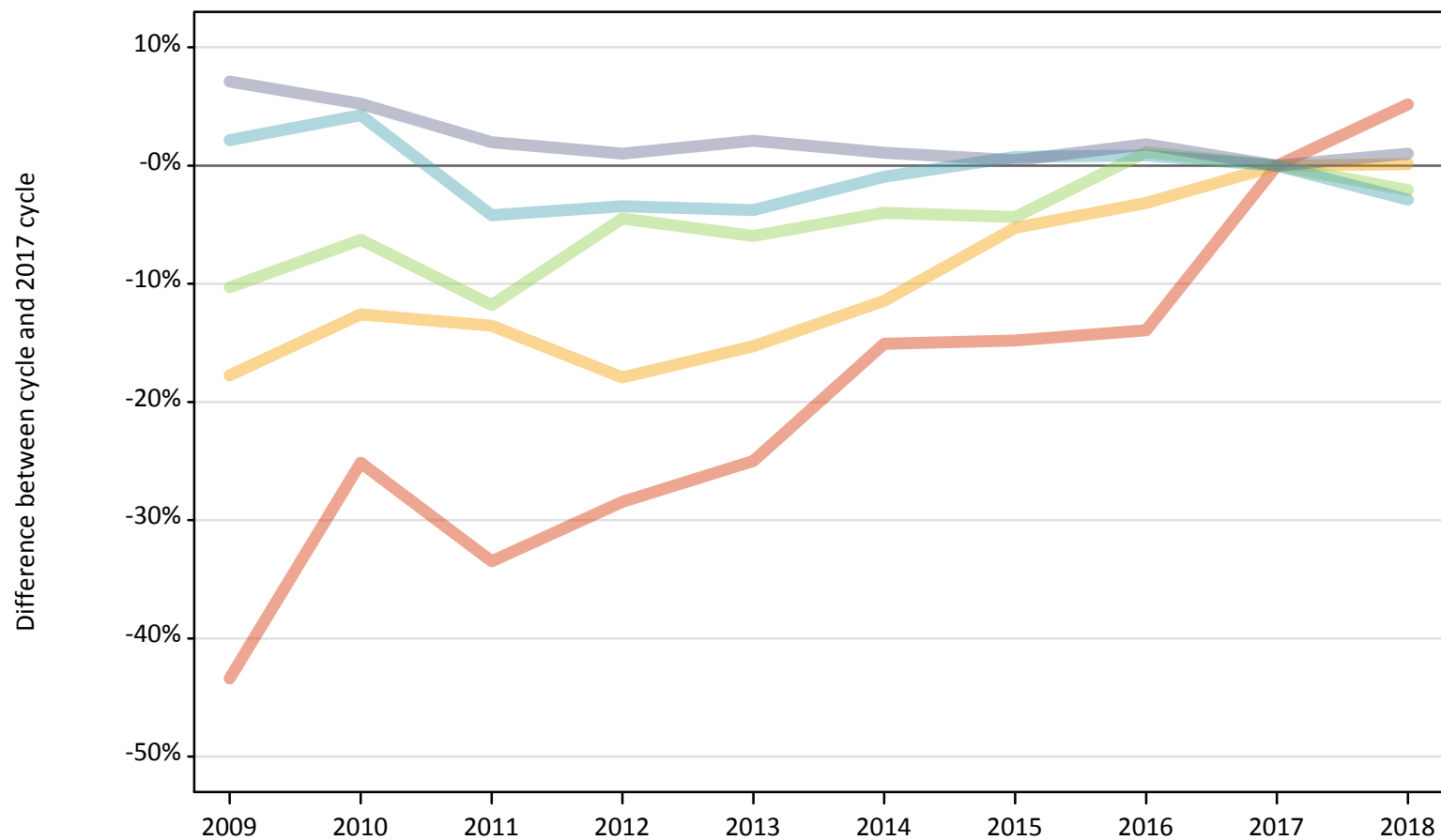
Placed 18 year old applicants: entry rate (indexed to 100 = Quintile 1)

Applicant Status	POLAR3	2009	2010	2011	2012	2013	2014	2015	2016	2017	2018
Placed	Quintile 1	100	100	100	100	100	100	100	100	100	100
	Quintile 2	187	154	188	157	162	161	138	165	153	154
	Quintile 3	236	206	220	205	209	198	188	200	186	191
	Quintile 4	308	259	288	252	259	241	226	242	237	242
	Quintile 5	404	314	369	334	335	300	286	295	286	301

P.13 Placed 18 year old applicants from Scotland by POLAR3 quintile: 8 days after A level results day

Placed 18 year old applicants: change relative to 2017 cycle totals

- Quintile 1
- Quintile 2
- Quintile 3
- Quintile 4
- Quintile 5



Note: The percentage change is not plotted in the above chart for groups with fewer than 30 placed applicants in any one cycle.

P.14 Placed 18 year old applicants from Scotland by POLAR3 quintile: 8 days after A level results day

Applicant Status	POLAR3	2009	2010	2011	2012	2013	2014	2015	2016	2017	2018
Placed	Quintile 1	390	520	460	500	520	590	590	600	700	730
	Quintile 2	1,280	1,360	1,350	1,280	1,320	1,380	1,470	1,510	1,560	1,560
	Quintile 3	2,040	2,140	2,010	2,180	2,140	2,190	2,180	2,310	2,280	2,230
	Quintile 4	3,480	3,550	3,260	3,290	3,270	3,370	3,430	3,430	3,400	3,300
	Quintile 5	7,130	7,010	6,790	6,730	6,800	6,730	6,690	6,780	6,660	6,730

P.15 Placed 18 year old applicants from Scotland by POLAR3 quintile: 8 days after A level results day

Placed 18 year old applicants: change relative to 2017 cycle totals

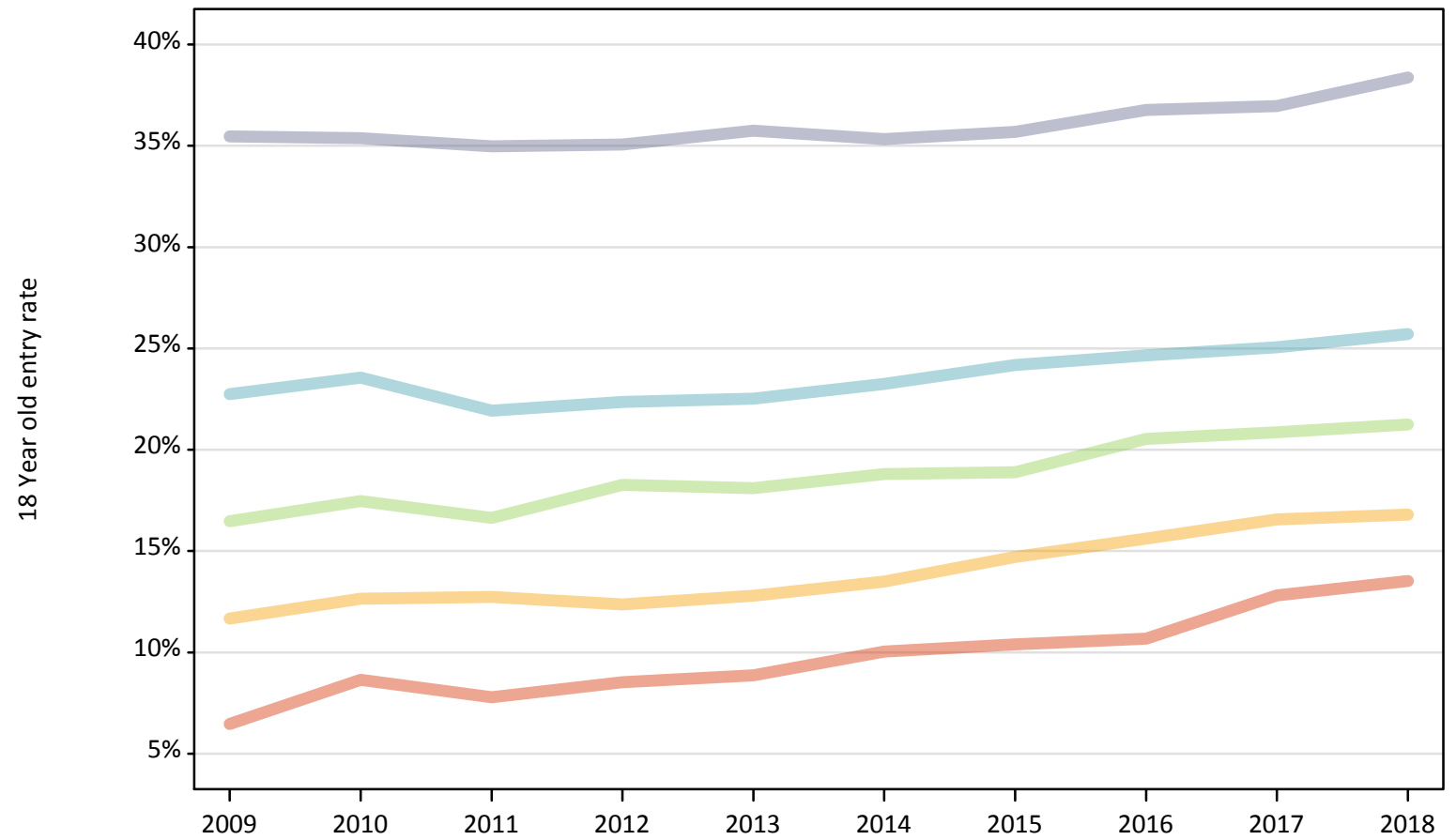
Applicant Status	POLAR3	2009	2010	2011	2012	2013	2014	2015	2016	2017	2018
Placed	Quintile 1	-43%	-25%	-33%	-28%	-25%	-15%	-15%	-14%	0%	5%
	Quintile 2	-18%	-13%	-14%	-18%	-15%	-11%	-5%	-3%	0%	0%
	Quintile 3	-10%	-6%	-12%	-4%	-6%	-4%	-4%	1%	0%	-2%
	Quintile 4	2%	4%	-4%	-3%	-4%	-1%	1%	1%	0%	-3%
	Quintile 5	7%	5%	2%	1%	2%	1%	0%	2%	0%	1%

Note: The percentage change is not recorded in the above table for groups with fewer than 10 placed applicants in that cycle or in the 2017 cycle.

P.16 Placed 18 year old applicants from Scotland by POLAR3 quintile: 8 days after A level results day

Placed 18 year old applicants: entry rate

- Quintile 1
- Quintile 2
- Quintile 3
- Quintile 4
- Quintile 5



P.17 Placed 18 year old applicants from Scotland by POLAR3 quintile: 8 days after A level results day

Placed 18 year old applicants: entry rate

Applicant Status	POLAR3	2009	2010	2011	2012	2013	2014	2015	2016	2017	2018
Placed	Quintile 1	6.5%	8.6%	7.8%	8.5%	8.9%	10.0%	10.4%	10.7%	12.8%	13.5%
	Quintile 2	11.7%	12.6%	12.7%	12.4%	12.8%	13.5%	14.7%	15.6%	16.6%	16.8%
	Quintile 3	16.5%	17.5%	16.6%	18.3%	18.1%	18.8%	18.9%	20.5%	20.9%	21.3%
	Quintile 4	22.7%	23.6%	21.9%	22.4%	22.5%	23.3%	24.2%	24.7%	25.1%	25.7%
	Quintile 5	35.5%	35.4%	35.0%	35.1%	35.7%	35.3%	35.7%	36.8%	37.0%	38.4%

P.18 Placed 18 year old applicants from Scotland by POLAR3 quintile: 8 days after A level results day

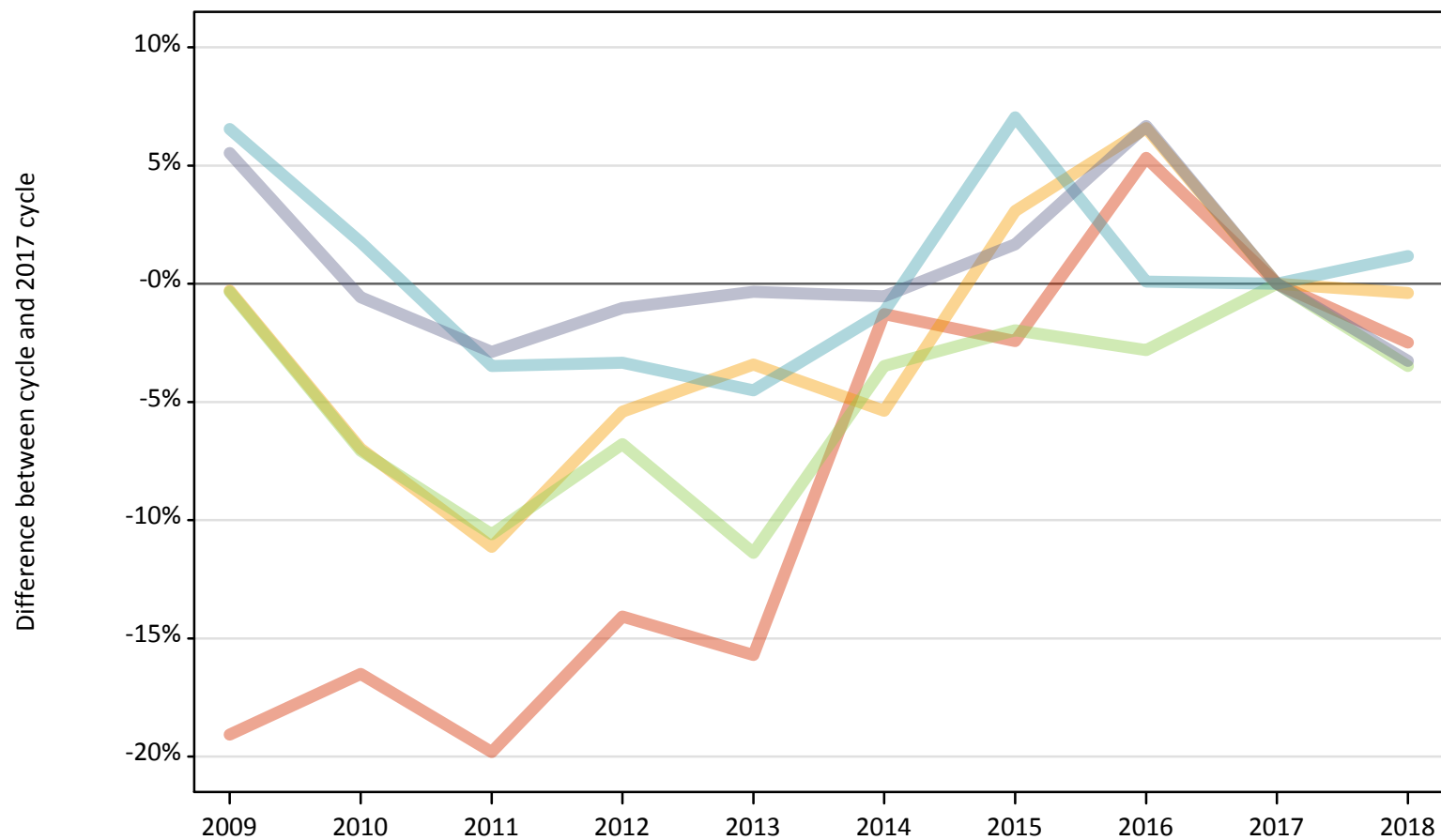
Placed 18 year old applicants: entry rate (indexed to 100 = Quintile 1)

Applicant Status	POLAR3	2009	2010	2011	2012	2013	2014	2015	2016	2017	2018
Placed	Quintile 1	100	100	100	100	100	100	100	100	100	100
	Quintile 2	181	146	164	145	144	134	142	146	129	124
	Quintile 3	255	202	214	214	204	187	182	192	163	157
	Quintile 4	352	273	282	262	254	232	233	231	195	190
	Quintile 5	549	409	449	411	403	352	343	344	288	284

P.19 Placed 18 year old applicants from Wales by POLAR3 quintile: 8 days after A level results day

Placed 18 year old applicants: change relative to 2017 cycle totals

- Quintile 1
- Quintile 2
- Quintile 3
- Quintile 4
- Quintile 5



Note: The percentage change is not plotted in the above chart for groups with fewer than 30 placed applicants in any one cycle.

P.20 Placed 18 year old applicants from Wales by POLAR3 quintile: 8 days after A level results day

Applicant Status	POLAR3	2009	2010	2011	2012	2013	2014	2015	2016	2017	2018
Placed	Quintile 1	1,200	1,240	1,190	1,280	1,250	1,470	1,450	1,560	1,480	1,450
	Quintile 2	2,040	1,910	1,820	1,940	1,980	1,940	2,110	2,180	2,050	2,040
	Quintile 3	1,780	1,660	1,590	1,660	1,580	1,720	1,750	1,730	1,780	1,720
	Quintile 4	2,360	2,250	2,140	2,140	2,120	2,190	2,370	2,220	2,220	2,240
	Quintile 5	2,790	2,620	2,560	2,610	2,630	2,630	2,680	2,820	2,640	2,550

P.21 Placed 18 year old applicants from Wales by POLAR3 quintile: 8 days after A level results day

Placed 18 year old applicants: change relative to 2017 cycle totals

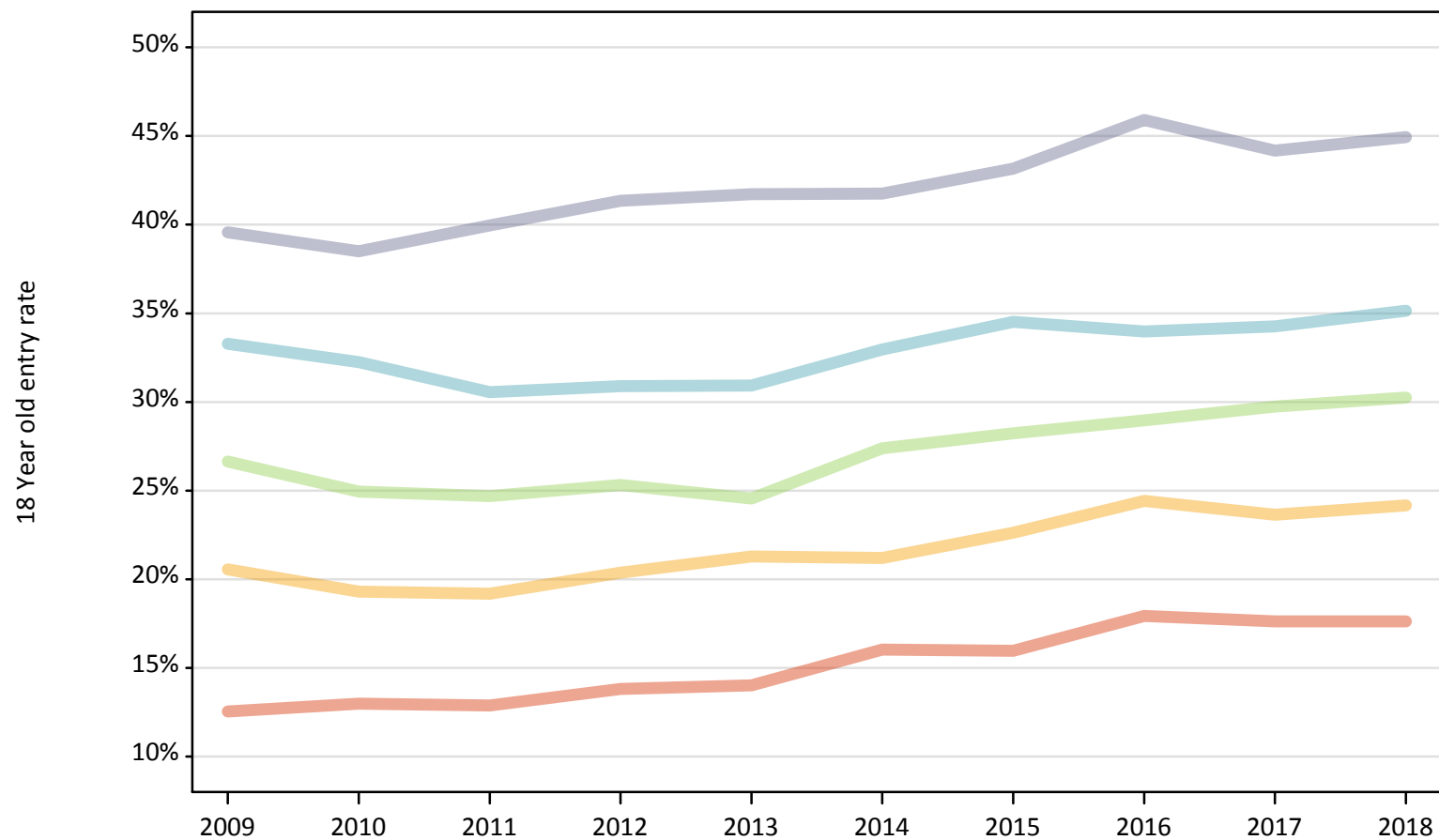
Applicant Status	POLAR3	2009	2010	2011	2012	2013	2014	2015	2016	2017	2018
Placed	Quintile 1	-19%	-17%	-20%	-14%	-16%	-1%	-2%	5%	0%	-2%
	Quintile 2	-0%	-7%	-11%	-5%	-3%	-5%	3%	7%	0%	-0%
	Quintile 3	-0%	-7%	-11%	-7%	-11%	-3%	-2%	-3%	0%	-3%
	Quintile 4	7%	2%	-3%	-3%	-5%	-1%	7%	0%	0%	1%
	Quintile 5	6%	-1%	-3%	-1%	-0%	-1%	2%	7%	0%	-3%

Note: The percentage change is not recorded in the above table for groups with fewer than 10 placed applicants in that cycle or in the 2017 cycle.

P.22 Placed 18 year old applicants from Wales by POLAR3 quintile: 8 days after A level results day

Placed 18 year old applicants: entry rate

- Quintile 1
- Quintile 2
- Quintile 3
- Quintile 4
- Quintile 5



P.23 Placed 18 year old applicants from Wales by POLAR3 quintile: 8 days after A level results day

Placed 18 year old applicants: entry rate

Applicant Status	POLAR3	2009	2010	2011	2012	2013	2014	2015	2016	2017	2018
Placed	Quintile 1	12.5%	13.0%	12.9%	13.8%	14.0%	16.0%	16.0%	17.9%	17.6%	17.6%
	Quintile 2	20.6%	19.3%	19.2%	20.4%	21.3%	21.2%	22.6%	24.4%	23.6%	24.2%
	Quintile 3	26.6%	24.9%	24.7%	25.3%	24.6%	27.4%	28.2%	29.0%	29.7%	30.3%
	Quintile 4	33.3%	32.2%	30.5%	30.9%	30.9%	33.0%	34.5%	34.0%	34.3%	35.1%
	Quintile 5	39.6%	38.5%	40.0%	41.3%	41.7%	41.8%	43.2%	45.9%	44.2%	44.9%

P.24 Placed 18 year old applicants from Wales by POLAR3 quintile: 8 days after A level results day

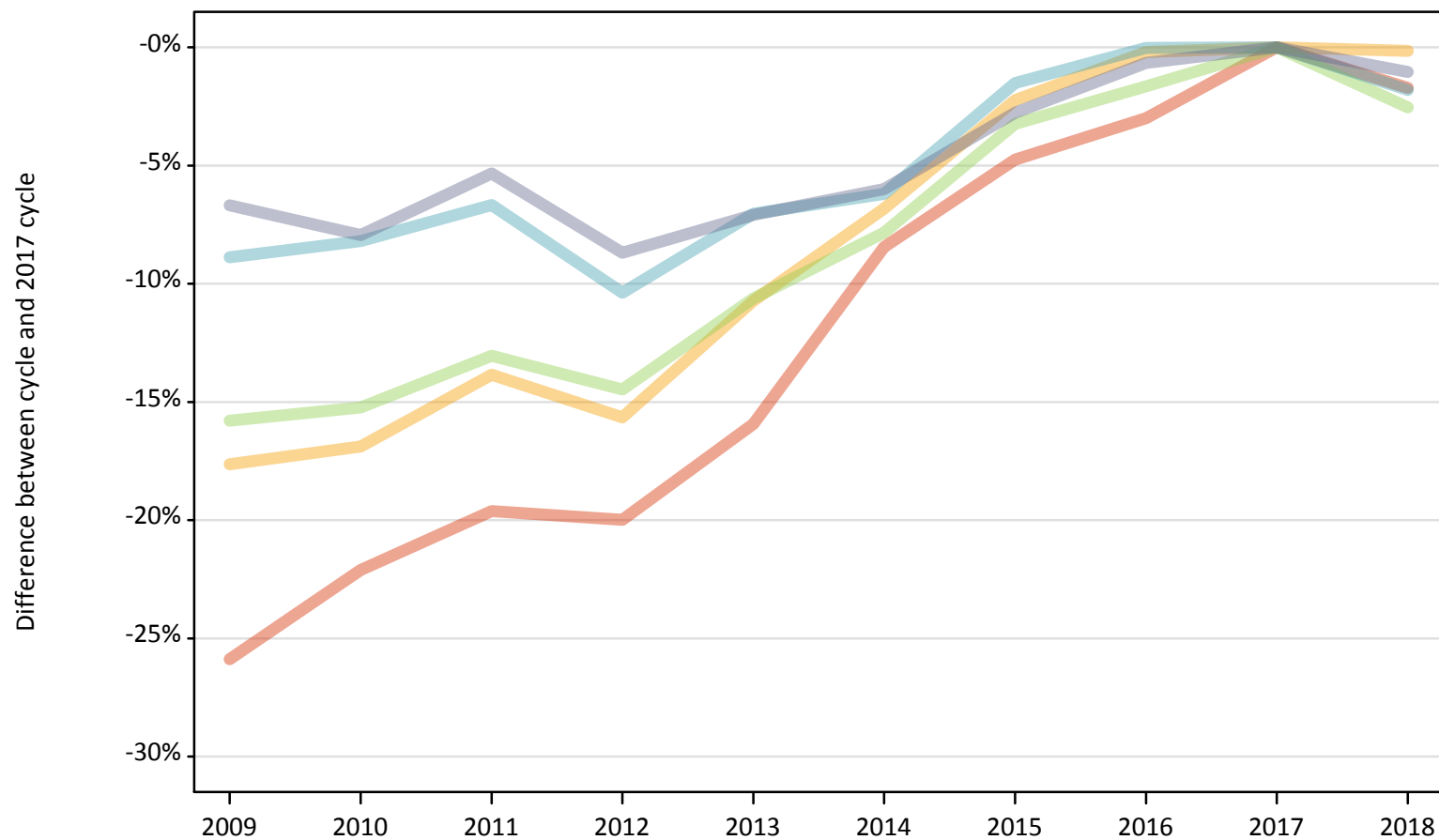
Placed 18 year old applicants: entry rate (indexed to 100 = Quintile 1)

Applicant Status	POLAR3	2009	2010	2011	2012	2013	2014	2015	2016	2017	2018
Placed	Quintile 1	100	100	100	100	100	100	100	100	100	100
	Quintile 2	164	149	149	147	152	132	142	136	134	137
	Quintile 3	212	192	192	183	175	171	177	162	169	172
	Quintile 4	266	248	237	223	221	206	216	190	194	199
	Quintile 5	316	296	310	299	298	260	270	256	251	255

P.25 Placed 18 year old applicants from the UK by POLAR3 quintile: 8 days after A level results day

Placed 18 year old applicants: change relative to 2017 cycle totals

- Quintile 1
- Quintile 2
- Quintile 3
- Quintile 4
- Quintile 5



Note: The percentage change is not plotted in the above chart for groups with fewer than 30 placed applicants in any one cycle.

P.26 Placed 18 year old applicants from the UK by POLAR3 quintile: 8 days after A level results day

Applicant Status	POLAR3	2009	2010	2011	2012	2013	2014	2015	2016	2017	2018
Placed	Quintile 1	18,890	19,860	20,490	20,400	21,430	23,340	24,280	24,730	25,490	25,050
	Quintile 2	29,520	29,790	30,880	30,230	32,000	33,390	35,040	35,770	35,840	35,790
	Quintile 3	38,590	38,850	39,850	39,200	40,970	42,240	44,350	45,080	45,830	44,670
	Quintile 4	49,990	50,370	51,200	49,170	51,000	51,460	54,040	54,850	54,870	53,880
	Quintile 5	70,080	69,140	71,090	68,570	69,770	70,590	73,020	74,600	75,100	74,310

P.27 Placed 18 year old applicants from the UK by POLAR3 quintile: 8 days after A level results day

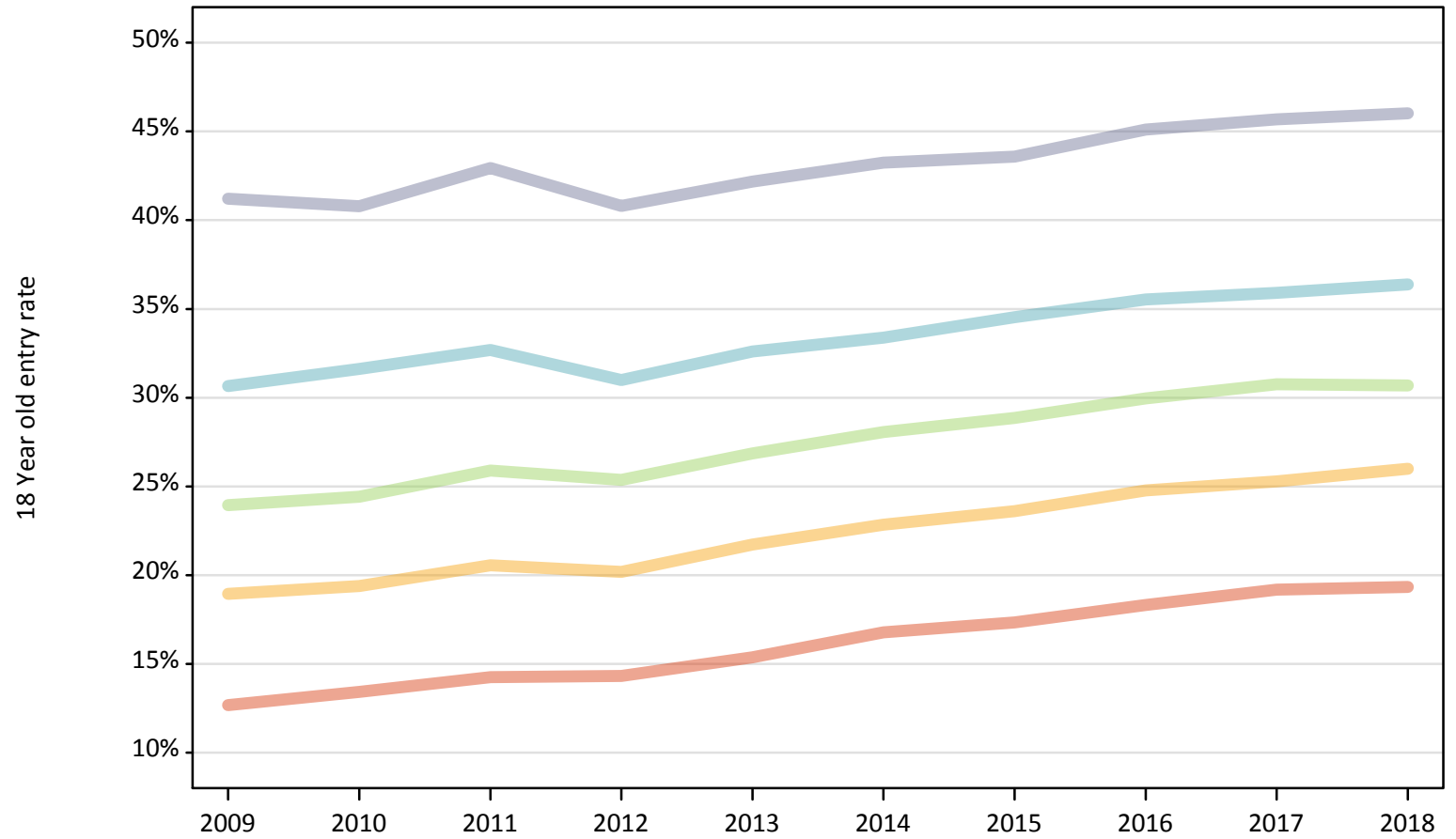
Placed 18 year old applicants: change relative to 2017 cycle totals

Applicant Status	POLAR3	2009	2010	2011	2012	2013	2014	2015	2016	2017	2018
Placed	Quintile 1	-26%	-22%	-20%	-20%	-16%	-8%	-5%	-3%	0%	-2%
	Quintile 2	-18%	-17%	-14%	-16%	-11%	-7%	-2%	-0%	0%	-0%
	Quintile 3	-16%	-15%	-13%	-14%	-11%	-8%	-3%	-2%	0%	-3%
	Quintile 4	-9%	-8%	-7%	-10%	-7%	-6%	-2%	-0%	0%	-2%
	Quintile 5	-7%	-8%	-5%	-9%	-7%	-6%	-3%	-1%	0%	-1%

Note: The percentage change is not recorded in the above table for groups with fewer than 10 placed applicants in that cycle or in the 2017 cycle.

P.28 Placed 18 year old applicants from the UK by POLAR3 quintile: 8 days after A level results day
Placed 18 year old applicants: entry rate

- Quintile 1
- Quintile 2
- Quintile 3
- Quintile 4
- Quintile 5



P.29 Placed 18 year old applicants from the UK by POLAR3 quintile: 8 days after A level results day

Placed 18 year old applicants: entry rate

Applicant Status	POLAR3	2009	2010	2011	2012	2013	2014	2015	2016	2017	2018
Placed	Quintile 1	12.7%	13.4%	14.3%	14.3%	15.4%	16.8%	17.3%	18.3%	19.2%	19.3%
	Quintile 2	18.9%	19.4%	20.6%	20.2%	21.7%	22.8%	23.6%	24.8%	25.3%	26.0%
	Quintile 3	23.9%	24.4%	25.9%	25.4%	26.9%	28.1%	28.9%	30.0%	30.8%	30.7%
	Quintile 4	30.6%	31.6%	32.7%	31.0%	32.6%	33.4%	34.5%	35.5%	35.9%	36.4%
	Quintile 5	41.2%	40.8%	42.9%	40.8%	42.2%	43.2%	43.6%	45.1%	45.7%	46.0%

P.30 Placed 18 year old applicants from the UK by POLAR3 quintile: 8 days after A level results day

Placed 18 year old applicants: entry rate (indexed to 100 = Quintile 1)

Applicant Status	POLAR3	2009	2010	2011	2012	2013	2014	2015	2016	2017	2018
Placed	Quintile 1	100	100	100	100	100	100	100	100	100	100
	Quintile 2	149	144	144	141	141	136	136	135	132	134
	Quintile 3	189	182	182	177	175	167	166	164	160	159
	Quintile 4	242	236	229	216	212	199	199	194	187	188
	Quintile 5	325	304	301	285	274	258	251	246	238	238