

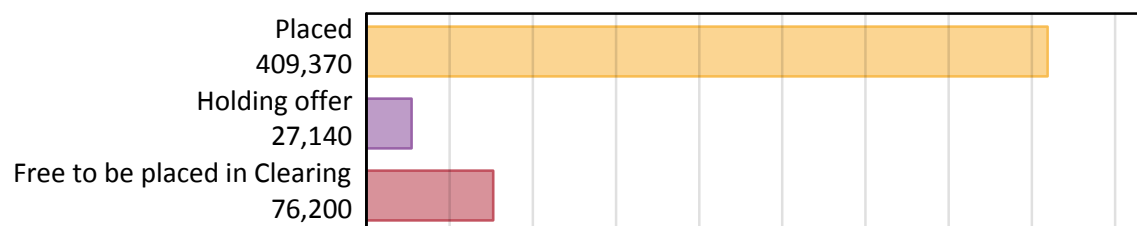
Daily Clearing Analysis: Overview

Analysis at 00:05 on Friday 24 August 2018 (8 days after A level results day)

A.1 Applicants by type and status from the UK, 2018 cycle

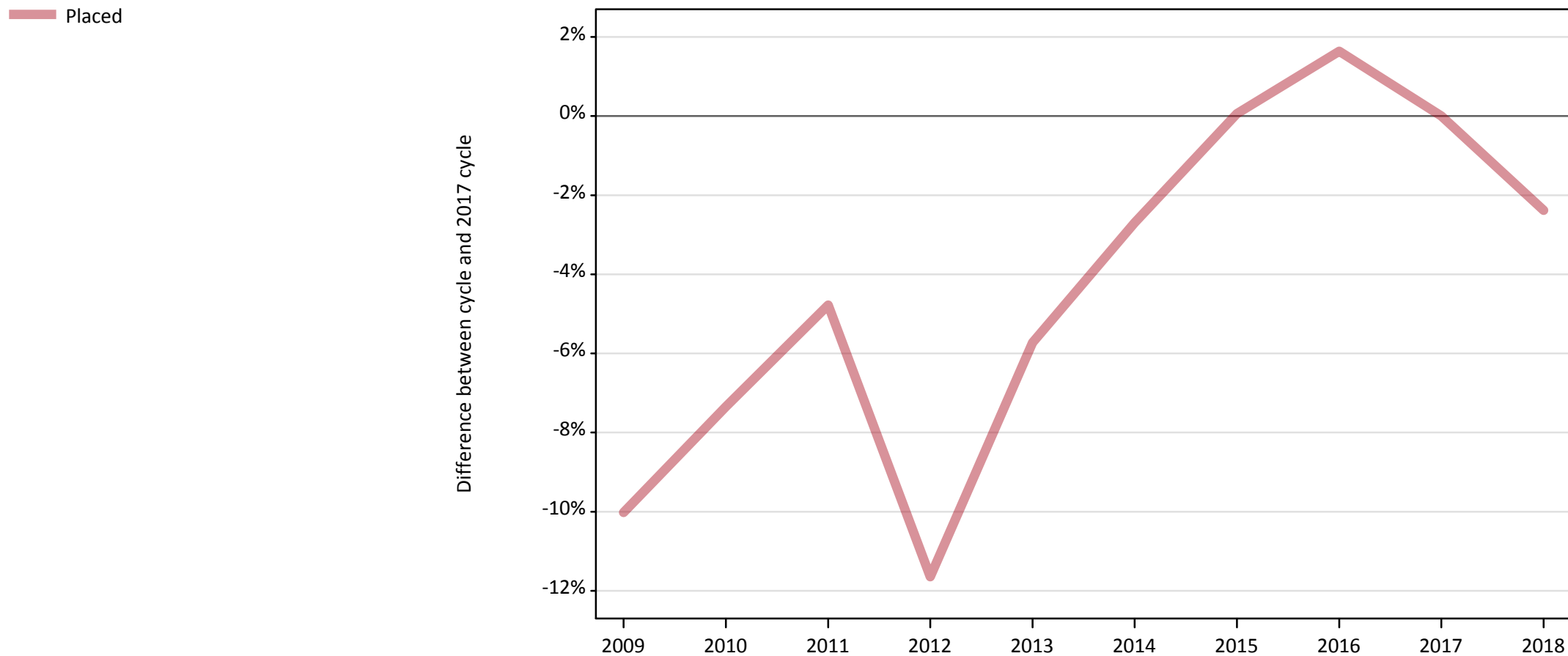
Applicant type	Status	2018
Main scheme	Placed (Clearing)	34,160
	Placed (Adjustment)	840
	Placed (Firm)	327,720
	Placed (Insurance)	27,860
	Placed (Other)	10,540
	Holding offer	27,140
	Free to be placed in Clearing	76,200
Direct to Clearing	Placed (Direct to Clearing)	8,260
	Other (Direct to Clearing)	6,540
All applicants	Placed	409,370

A.2 Summary of applicants who are placed, holding offers or free to be placed in Clearing (the UK)



A.3 All placed applicants from the UK: 8 days after A level results day

All placed applicants: difference between cycle and 2017 cycle



Note: The percentage change is not plotted in the above chart for groups with fewer than 30 placed applicants in any one cycle.

A.4 All placed applicants from the UK: 8 days after A level results day

All placed applicants: applicants at 8 days after A level results day

Applicant type	Status	2009	2010	2011	2012	2013	2014	2015	2016	2017	2018
All applicants	Placed	377,330	388,560	399,320	370,520	395,340	408,040	419,620	426,220	419,350	409,370

A.5 All placed applicants from the UK: 8 days after A level results day

All placed applicants: difference between cycle and 2017 cycle

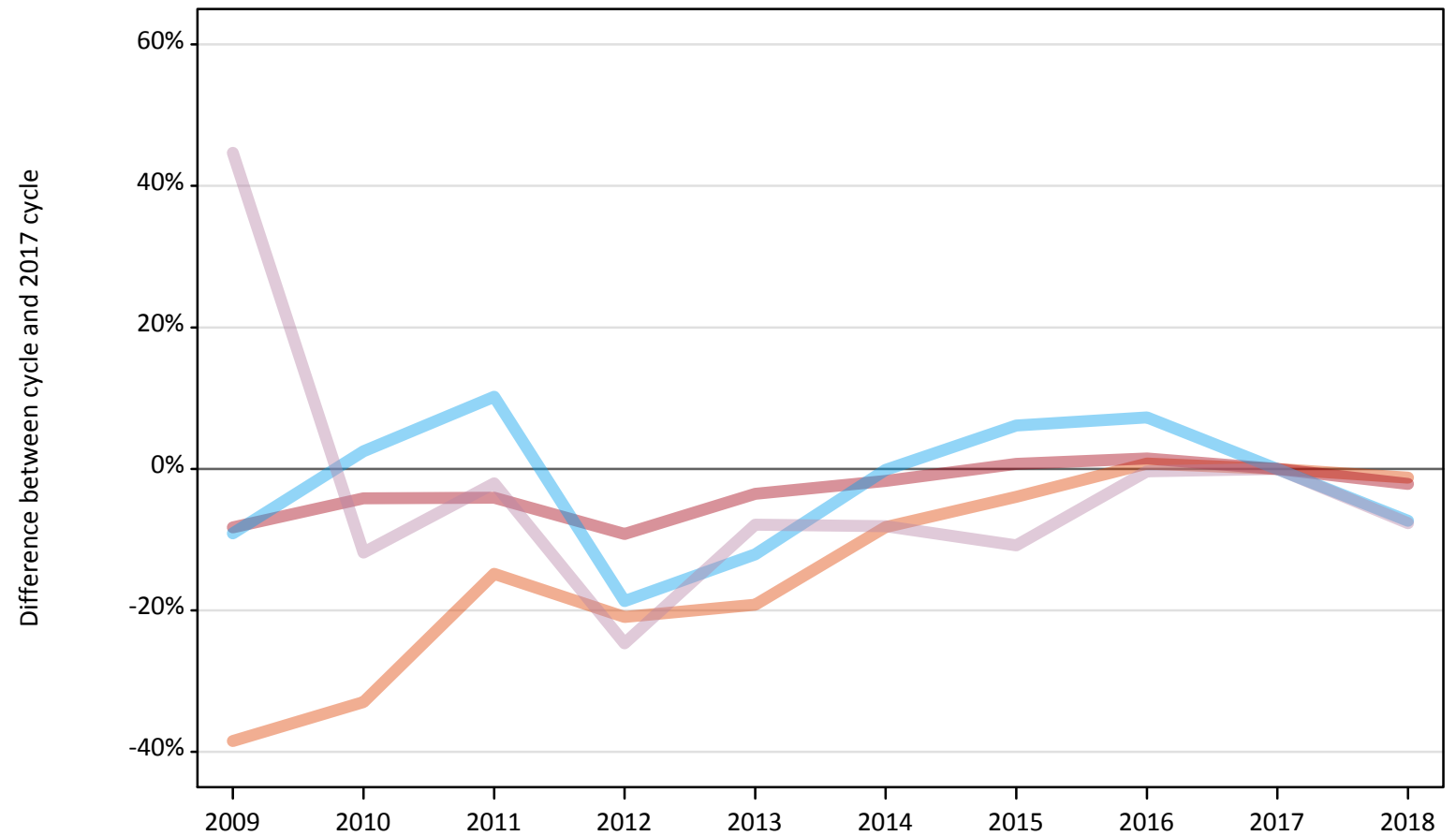
Applicant type	Status	2009	2010	2011	2012	2013	2014	2015	2016	2017	2018
All applicants	Placed	-10%	-7%	-5%	-12%	-6%	-3%	0%	2%	0%	-2%

Note: The percentage change is not recorded in the above table for groups with fewer than 10 placed applicants in that cycle or in the 2017 cycle.

A.6 Placed main scheme applicants from the UK: 8 days after A level results day

All Main scheme placed routes (excluding Adjustment): difference between cycle and 2017 cycle

- Placed (Clearing)
- Placed (Firm)
- Placed (Insurance)
- Placed (Other)



Note: The percentage change is not plotted in the above chart for groups with fewer than 30 placed applicants in any one cycle.

A.7 Placed main scheme applicants from the UK: 8 days after A level results day

All Main scheme placed routes (excluding Adjustment): applicants at 8 days after A level results day

Applicant type	Status	2009	2010	2011	2012	2013	2014	2015	2016	2017	2018
Main scheme	Placed (Clearing)	21,280	23,180	29,450	27,350	27,960	31,740	33,220	34,860	34,590	34,160
	Placed (Firm)	307,080	320,820	321,230	303,990	322,960	329,170	337,150	339,780	334,830	327,720
	Placed (Insurance)	27,330	30,820	33,140	24,450	26,440	30,030	31,920	32,260	30,070	27,860
	Placed (Other)	16,510	10,060	11,180	8,600	10,510	10,490	10,180	11,370	11,410	10,540

A.8 Placed main scheme applicants from the UK: 8 days after A level results day

All Main scheme placed routes (excluding Adjustment): difference between cycle and 2017 cycle

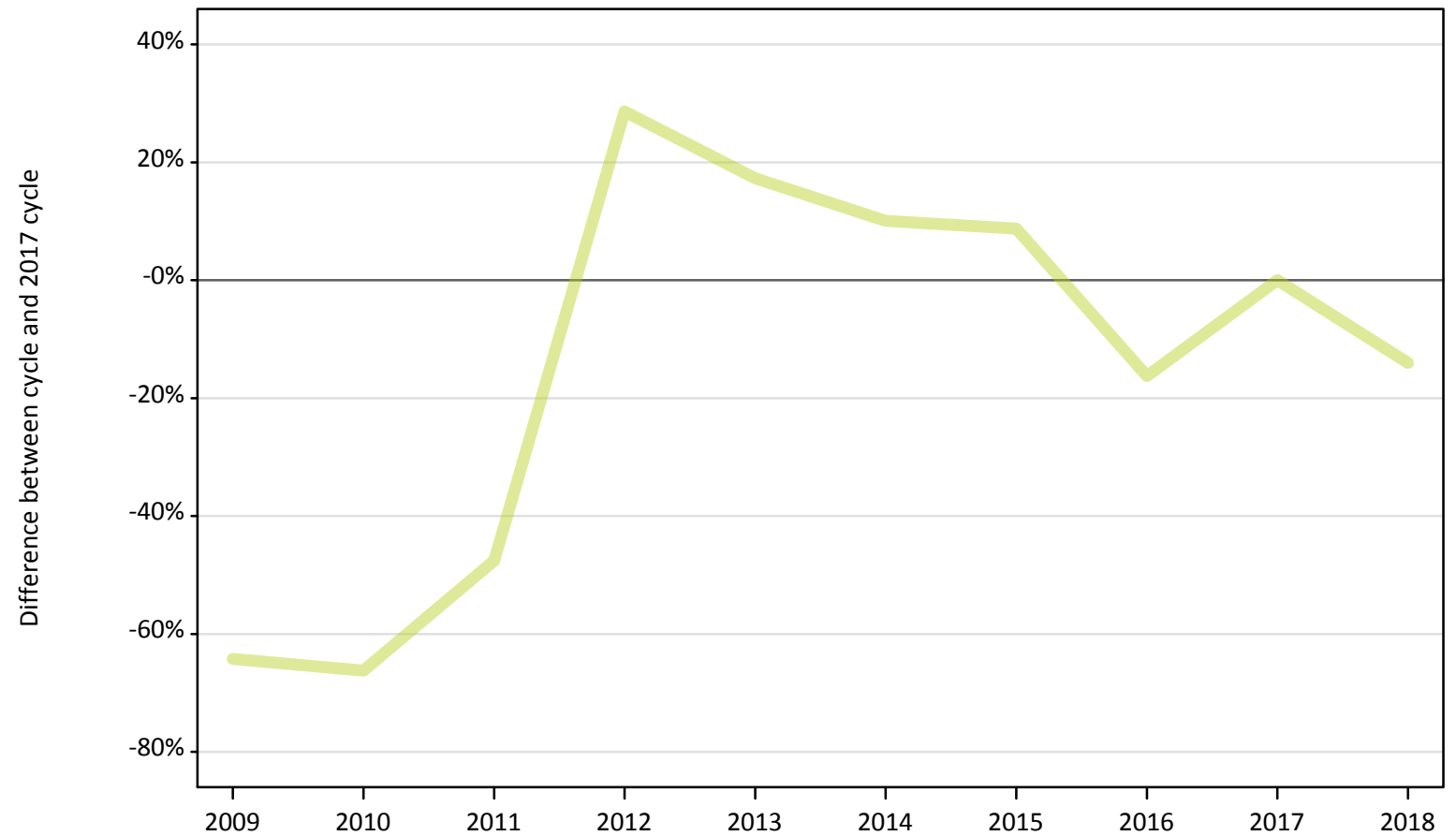
Applicant type	Status	2009	2010	2011	2012	2013	2014	2015	2016	2017	2018
Main scheme	Placed (Clearing)	-38%	-33%	-15%	-21%	-19%	-8%	-4%	1%	0%	-1%
	Placed (Firm)	-8%	-4%	-4%	-9%	-4%	-2%	1%	1%	0%	-2%
	Placed (Insurance)	-9%	2%	10%	-19%	-12%	-0%	6%	7%	0%	-7%
	Placed (Other)	45%	-12%	-2%	-25%	-8%	-8%	-11%	-0%	0%	-8%

Note: The percentage change is not recorded in the above table for groups with fewer than 10 placed applicants in that cycle or in the 2017 cycle.

A.9 Main scheme applicants placed through adjustment: 8 days after A level results day

Placed through adjustment: difference between cycle and 2017 cycle

Placed (Adjustment)



Note: The percentage change is not plotted in the above chart for groups with fewer than 30 placed applicants in any one cycle.

A.10 Main scheme applicants placed through adjustment: 8 days after A level results day

Placed through adjustment: applicants at 8 days after A level results day

Applicant type	Status	2009	2010	2011	2012	2013	2014	2015	2016	2017	2018
Main scheme	Placed (Adjustment)	350	330	510	1,250	1,140	1,070	1,060	810	970	840

A.11 Main scheme applicants placed through adjustment: 8 days after A level results day

Placed through adjustment: difference between cycle and 2017 cycle

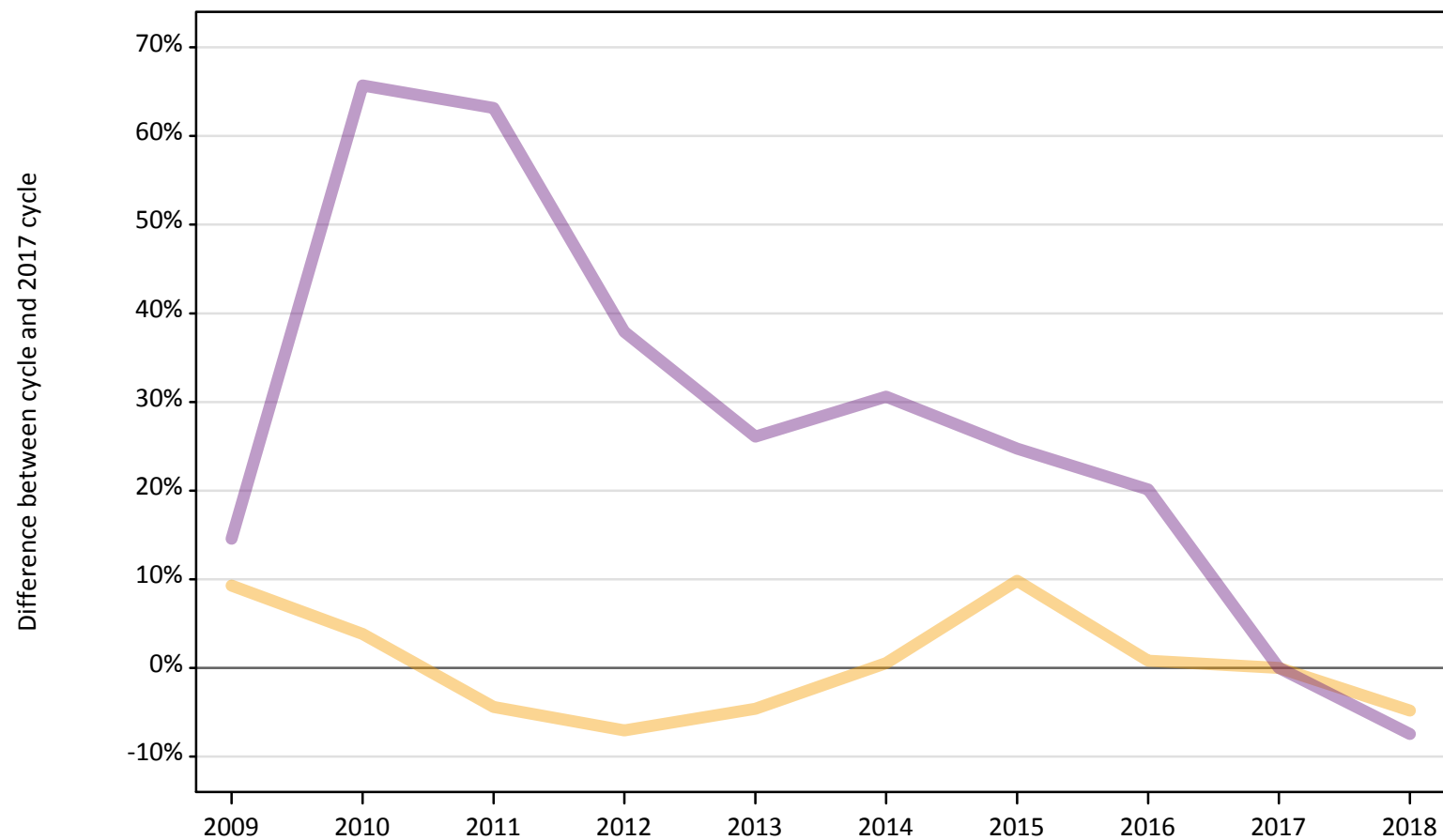
Applicant type	Status	2009	2010	2011	2012	2013	2014	2015	2016	2017	2018
Main scheme	Placed (Adjustment)	-64%	-66%	-48%	29%	17%	10%	9%	-16%	0%	-14%

Note: The percentage change is not recorded in the above table for groups with fewer than 10 placed applicants in that cycle or in the 2017 cycle.

A.12 Main scheme applicants not currently placed from the UK: 8 days after A level results day

Applicants in unplaced states: difference between cycle and 2017 cycle

— Holding offer
— Free to be placed in Clearing



Note: The percentage change is not plotted in the above chart for groups with fewer than 30 unplaced applicants in any one cycle.

A.13 Main scheme applicants not currently placed from the UK: 8 days after A level results day

Applicants in unplaced states: applicants at 8 days after A level results day

Applicant type	Status	2009	2010	2011	2012	2013	2014	2015	2016	2017	2018
Main scheme	Holding offer	31,160	29,610	27,260	26,500	27,200	28,670	31,310	28,750	28,510	27,140
	Free to be placed in Clearing	94,350	136,450	134,350	113,560	103,830	107,520	102,700	98,910	82,340	76,200

A.14 Main scheme applicants not currently placed from the UK: 8 days after A level results day

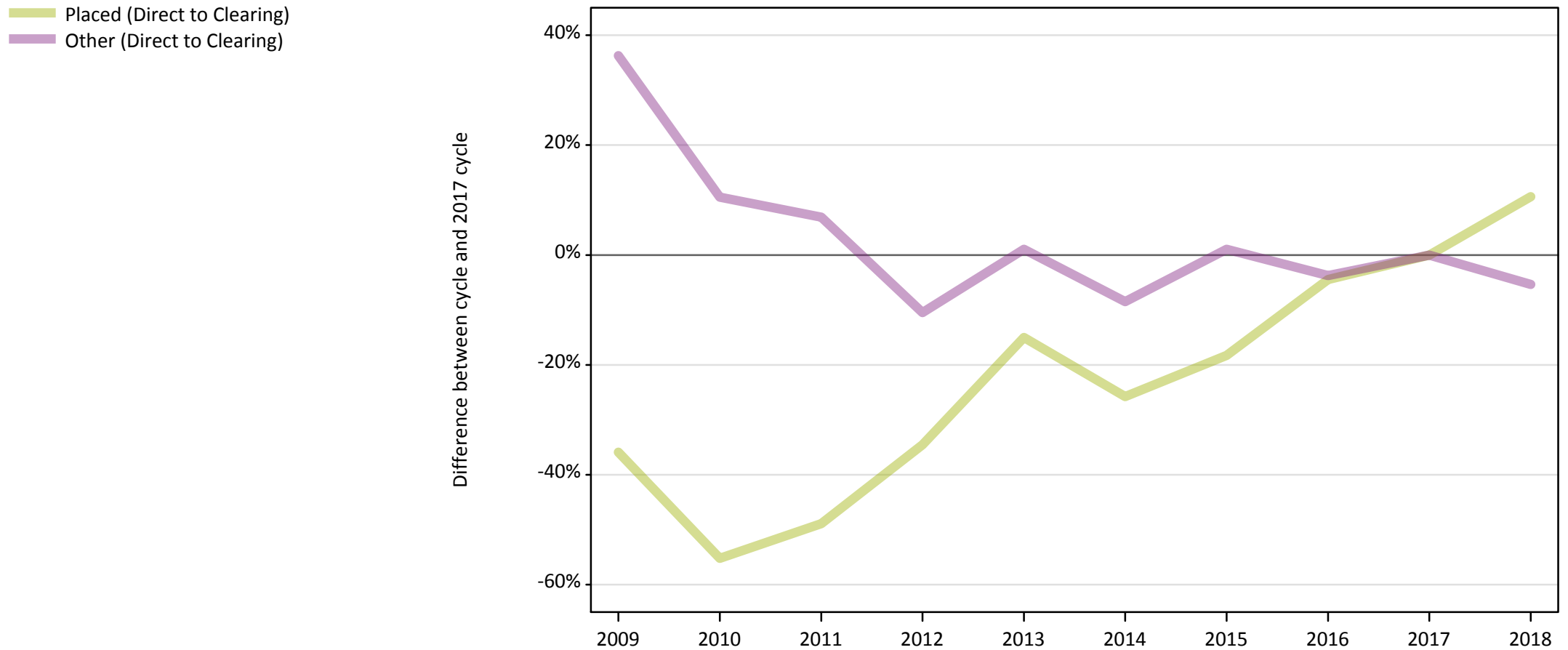
Applicants in unplaced states: difference between cycle and 2017 cycle

Applicant type	Status	2009	2010	2011	2012	2013	2014	2015	2016	2017	2018
Main scheme	Holding offer	9%	4%	-4%	-7%	-5%	1%	10%	1%	0%	-5%
	Free to be placed in Clearing	15%	66%	63%	38%	26%	31%	25%	20%	0%	-7%

Note: The percentage change is not recorded in the above table for groups with fewer than 10 unplaced applicants in that cycle or in the 2017 cycle.

A.15 Direct to Clearing applicants from the UK: 8 days after A level results day

Direct to Clearing: difference between cycle and 2017 cycle



Note: The percentage change is not plotted in the above chart for groups with fewer than 30 placed applicants in any one cycle.

A.16 Direct to Clearing applicants from the UK: 8 days after A level results day

Direct to Clearing 8 days after A level results day

Applicant type	Status	2009	2010	2011	2012	2013	2014	2015	2016	2017	2018
Direct to Clearing	Placed (Direct to Clearing)	4,780	3,340	3,810	4,880	6,340	5,540	6,100	7,130	7,460	8,260
	Other (Direct to Clearing)	9,420	7,640	7,380	6,180	6,980	6,320	6,980	6,650	6,910	6,540

A.17 Direct to Clearing applicants from the UK: 8 days after A level results day

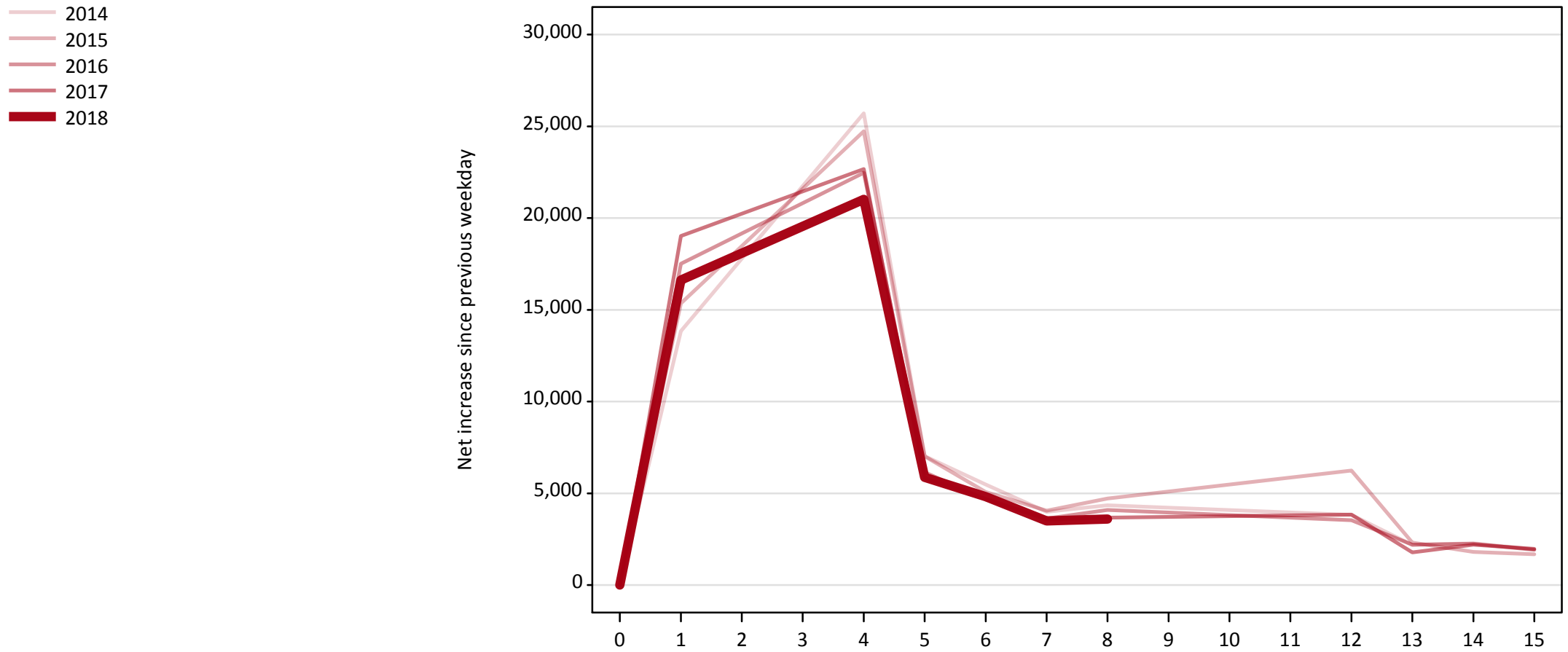
Direct to Clearing: difference between cycle and 2017 cycle

Applicant type	Status	2009	2010	2011	2012	2013	2014	2015	2016	2017	2018
Direct to Clearing	Placed (Direct to Clearing)	-36%	-55%	-49%	-35%	-15%	-26%	-18%	-4%	0%	11%
	Other (Direct to Clearing)	36%	11%	7%	-10%	1%	-8%	1%	-4%	0%	-5%

Note: The percentage change is not recorded in the above table for groups with fewer than 10 placed applicants in that cycle or in the 2017 cycle.

A.18 All Placed: Daily net change (from the UK)

Net increase since previous weekday (2018 cycle up to 8 days after A level results day)



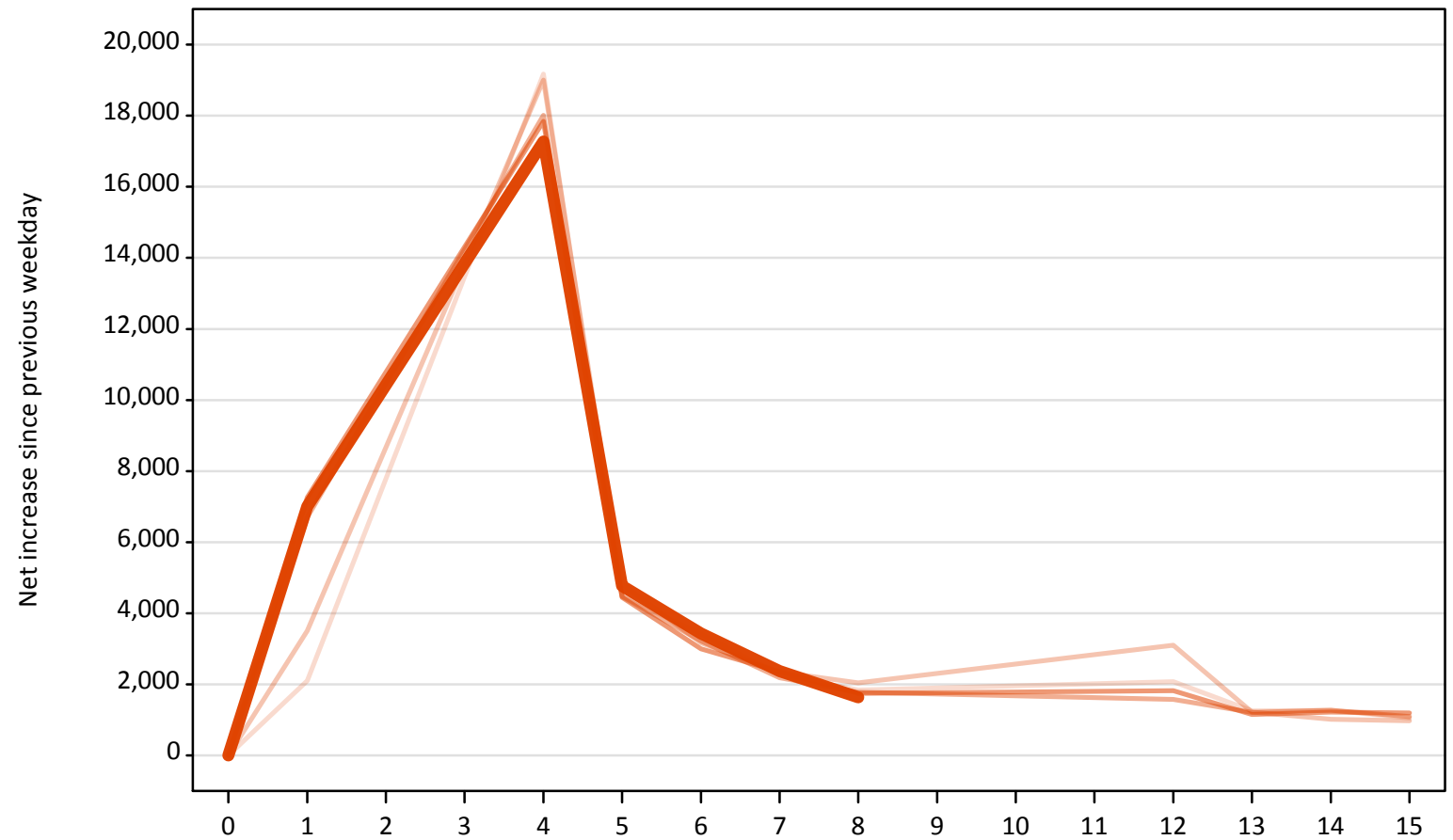
A.19 All Placed: Daily net change (from the UK)

Net increase since previous weekday (2018 cycle up to 8 days after A level results day)

Applicant status, days since A level results day	2014	2015	2016	2017	2018	
All Placed	0	0	0	0	0	
	1	13,840	15,350	17,510	19,030	16,620
	4	25,710	24,730	22,470	22,670	21,010
	5	7,020	7,020	6,140	5,840	5,870
	6	5,480	5,070	4,660	4,710	4,810
	7	3,990	4,060	3,630	3,570	3,500
	8	4,350	4,720	4,090	3,670	3,600
	12	3,830	6,240	3,530	3,840	
	13	2,190	2,310	2,200	1,780	
	14	2,280	1,810	2,260	2,200	
	15	1,950	1,680	1,920	1,970	

A.20 Placed through Clearing only: Daily net change (from the UK)
Net increase since previous weekday (2018 cycle up to 8 days after A level results day)

- 2014
- 2015
- 2016
- 2017
- 2018

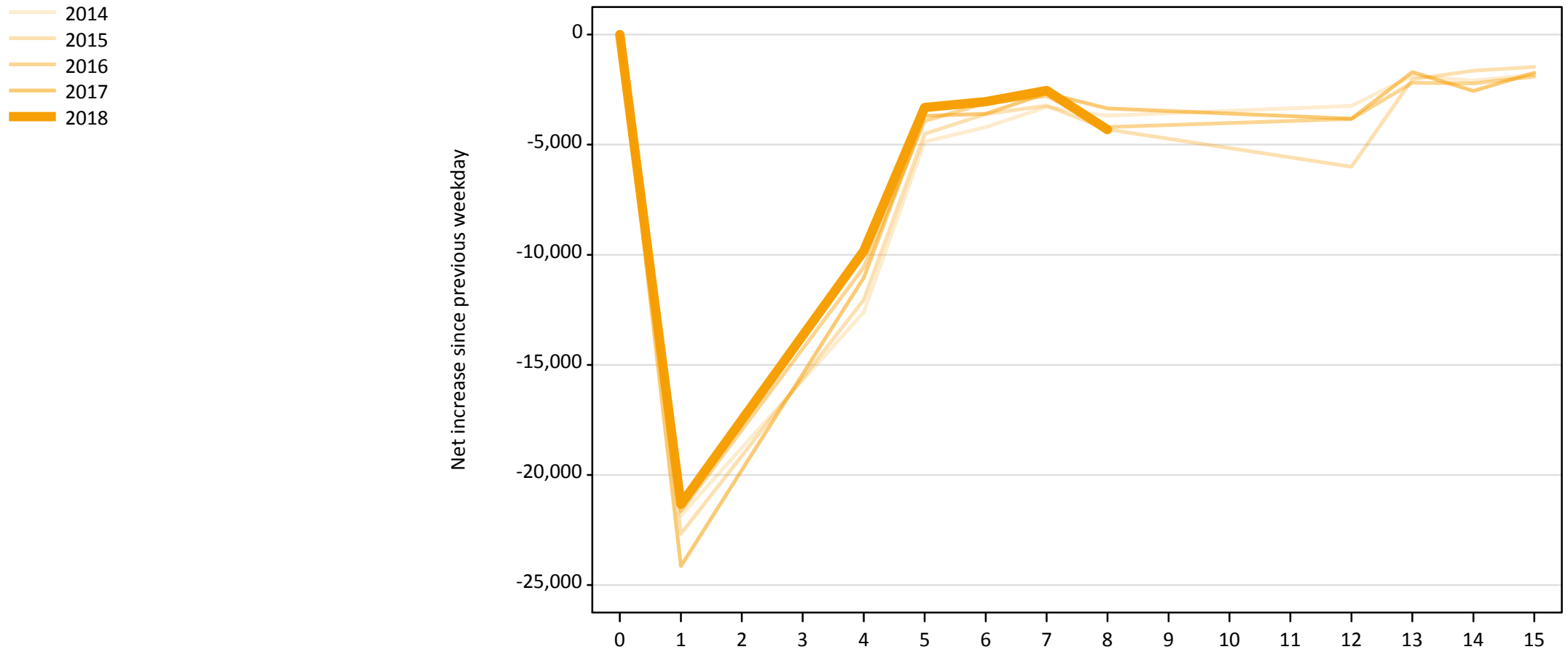


A.21 Placed through Clearing only: Daily net change (from the UK)

Net increase since previous weekday (2018 cycle up to 8 days after A level results day)

Applicant status, days since A level results day		2014	2015	2016	2017	2018
Placed through Clearing only	0	0	0	0	0	0
	1	2,100	3,510	6,700	7,260	7,010
	4	19,170	19,000	18,010	17,840	17,270
	5	4,480	4,820	4,470	4,450	4,770
	6	3,420	3,170	3,220	3,000	3,430
	7	2,270	2,350	2,180	2,360	2,370
	8	1,840	2,040	1,780	1,740	1,640
	12	2,070	3,100	1,570	1,820	
	13	1,250	1,220	1,210	1,150	
	14	1,270	1,020	1,270	1,220	
	15	1,050	980	1,090	1,200	

A.22 Holding Offer: Daily net change (from the UK)
Net increase since previous weekday (2018 cycle up to 8 days after A level results day)



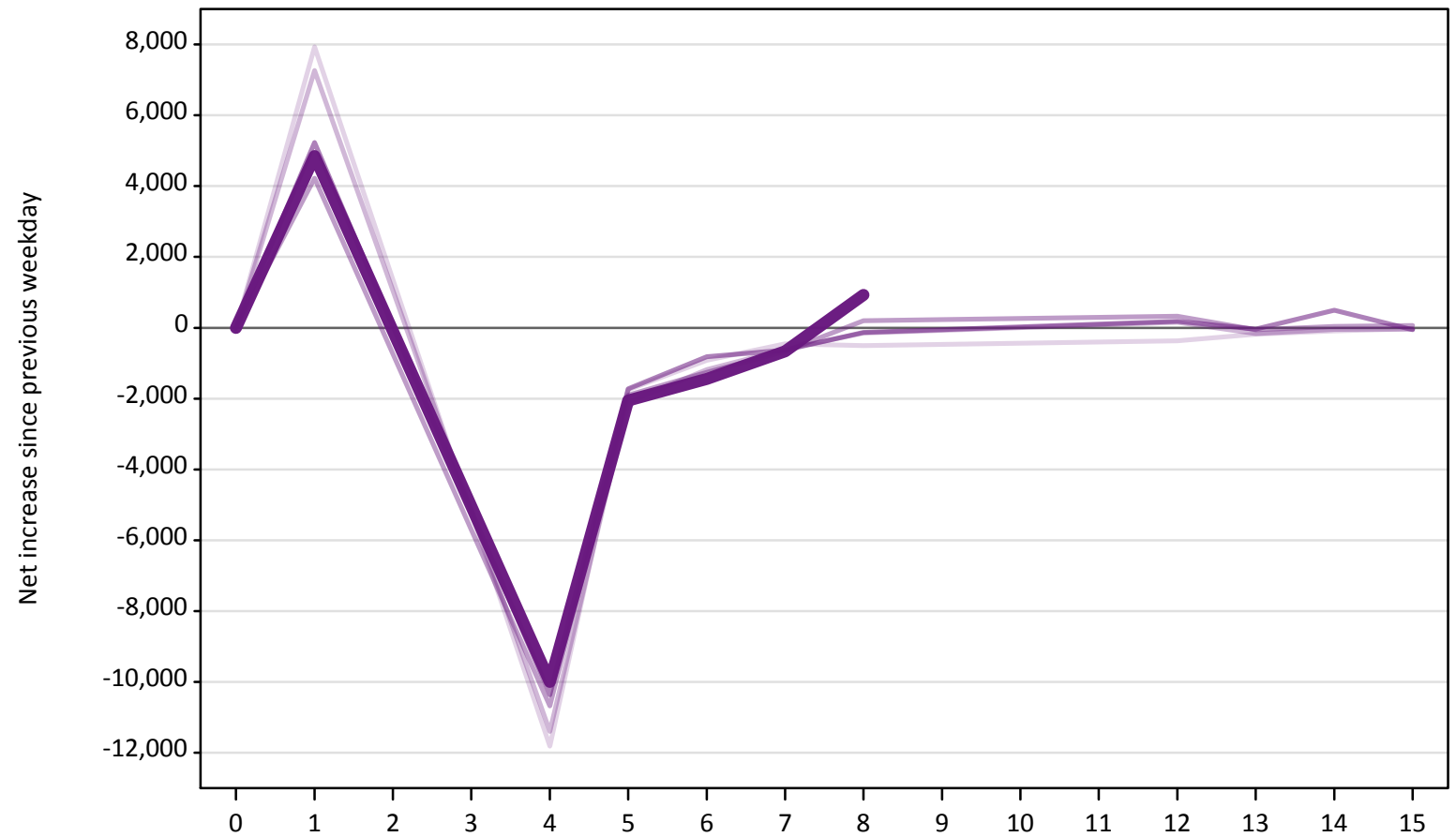
A.23 Holding Offer: Daily net change (from the UK)

Net increase since previous weekday (2018 cycle up to 8 days after A level results day)

Applicant status, days since A level results day	2014	2015	2016	2017	2018	
Holding Offer	0	0	0	0	0	
	1	-21,840	-22,670	-21,650	-24,140	-21,330
	4	-12,610	-12,050	-10,570	-11,040	-9,830
	5	-4,870	-4,510	-3,920	-3,690	-3,320
	6	-4,210	-3,610	-3,110	-3,600	-3,040
	7	-3,290	-3,230	-2,790	-2,670	-2,540
	8	-3,690	-4,310	-4,200	-3,360	-4,320
	12	-3,240	-6,000	-3,830	-3,830	
	13	-1,870	-2,030	-2,190	-1,700	
	14	-2,100	-1,640	-2,220	-2,560	
	15	-1,810	-1,470	-1,900	-1,740	

A.24 Free to be placed in Clearing: Daily net change (from the UK)
Net increase since previous weekday (2018 cycle up to 8 days after A level results day)

- 2014
- 2015
- 2016
- 2017
- 2018



A.25 Free to be placed in Clearing: Daily net change (from the UK)

Net increase since previous weekday (2018 cycle up to 8 days after A level results day)

Applicant status, days since A level results day		2014	2015	2016	2017	2018
Free to be placed in Clearing	0	0	0	0	0	0
	1	7,940	7,260	4,220	5,230	4,850
	4	-11,810	-11,400	-10,680	-10,370	-10,000
	5	-1,750	-2,100	-1,900	-1,730	-2,050
	6	-920	-1,180	-1,260	-820	-1,450
	7	-450	-610	-660	-630	-660
	8	-510	-150	200	-130	920
	12	-370	150	320	190	
	13	-180	-170	-50	-40	
	14	-90	-50	40	500	
	15	-30	-40	60	-50	