

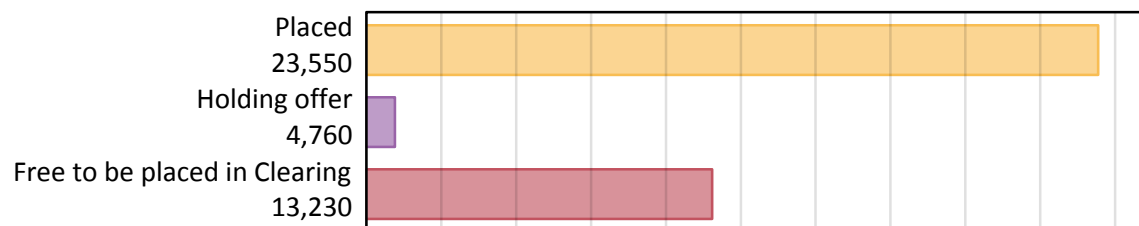
Daily Clearing Analysis: Overview

B7 Nursing analysis at 00:05 on Friday 24 August 2018 (8 days after A level results day)

AB.1 Placed applicants to nursing from the UK, 2018 cycle

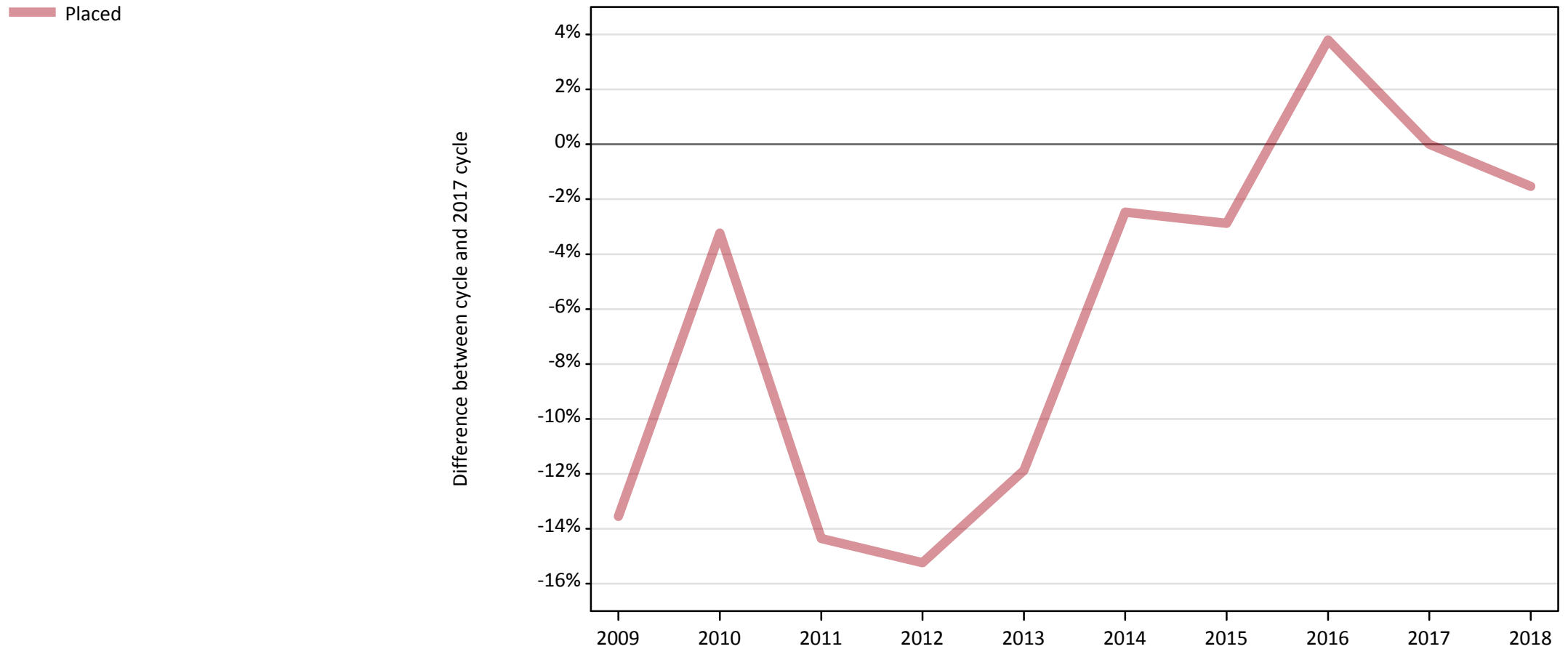
Applicant type	Status	2018
Main scheme	Placed (Clearing)	1,120
	Placed (Adjustment)	10
	Placed (Firm)	20,620
	Placed (Insurance)	460
	Placed (Other)	960
	Holding offer	4,760
	Free to be placed in Clearing	13,230
Direct to Clearing	Placed (Direct to Clearing)	390
	Other (Direct to Clearing)	430
All applicants	Placed	23,550

AB.2 Summary of nursing applicants who are placed, holding offers or free to be placed in Clearing (the UK)



AB.3 Placed applicants to nursing from the UK: 8 days after A level results day

Placed applicants to nursing: difference between cycle and 2017 cycle



Note: The percentage change is not plotted in the above chart for groups with fewer than 30 placed applicants in any one cycle.

AB.4 Placed applicants to nursing from the UK: 8 days after A level results day

Placed applicants to nursing: applicants at 8 days after A level results day

Applicant type	Status	2009	2010	2011	2012	2013	2014	2015	2016	2017	2018
All applicants	Placed	20,670	23,140	20,480	20,270	21,070	23,320	23,220	24,820	23,910	23,550

AB.5 Placed applicants to nursing from the UK: 8 days after A level results day

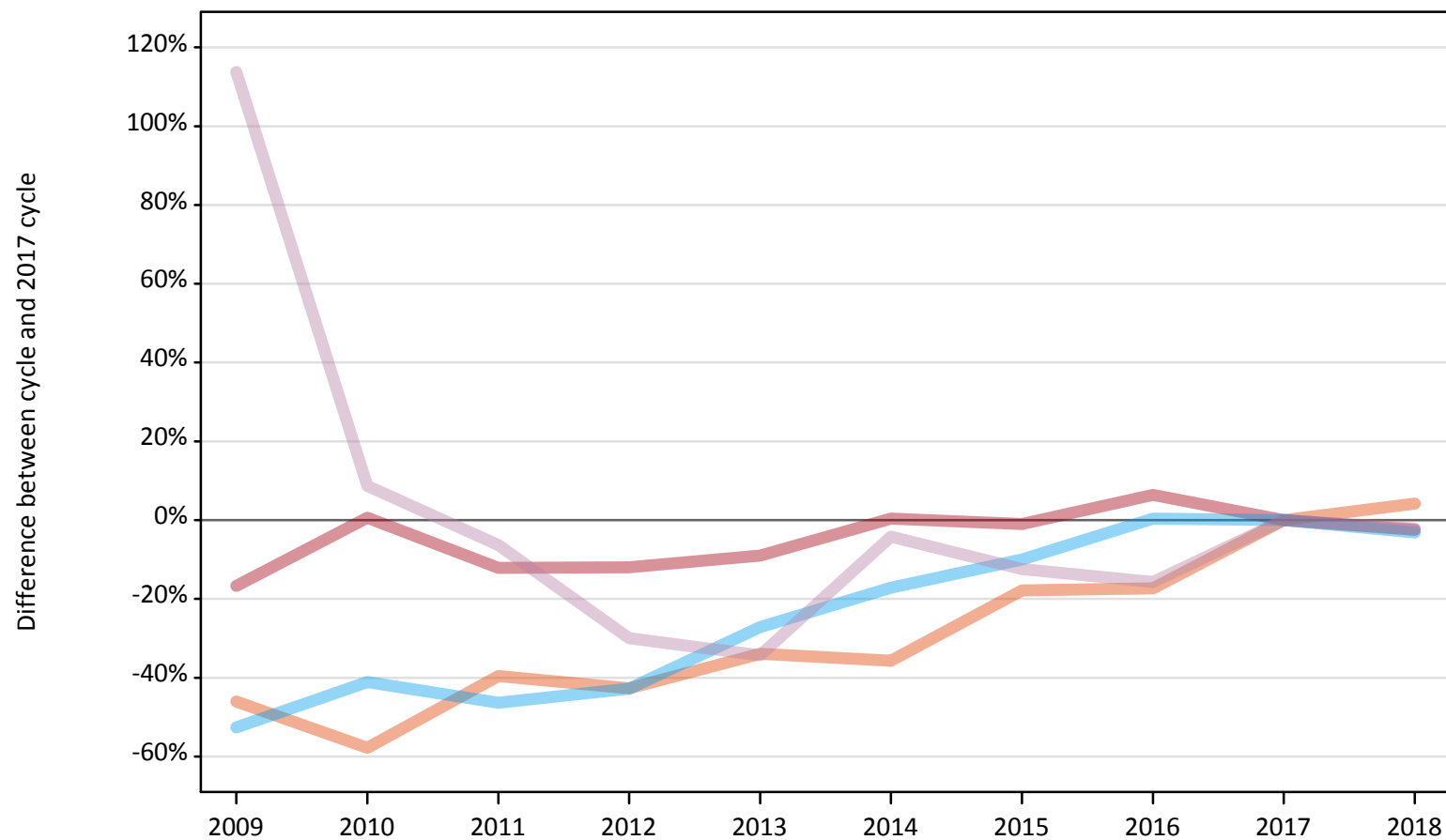
Placed applicants to nursing: difference between cycle and 2017 cycle

Applicant type	Status	2009	2010	2011	2012	2013	2014	2015	2016	2017	2018
All applicants	Placed	-14%	-3%	-14%	-15%	-12%	-2%	-3%	4%	0%	-2%

Note: The percentage change is not recorded in the above table for groups with fewer than 10 placed applicants in that cycle or in the 2017 cycle.

AB.6 Placed main scheme applicants to nursing from the UK: 8 days after A level results day
All Main scheme placed routes (excluding Adjustment): difference between cycle and 2017 cycle

- Placed (Clearing)
- Placed (Firm)
- Placed (Insurance)
- Placed (Other)



Note: The percentage change is not plotted in the above chart for groups with fewer than 30 placed applicants in any one cycle.

AB.7 Placed main scheme applicants to nursing from the UK: 8 days after A level results day

All Main scheme placed routes (excluding Adjustment): applicants at 8 days after A level results day

Applicant type	Status	2009	2010	2011	2012	2013	2014	2015	2016	2017	2018
Main scheme	Placed (Clearing)	580	450	650	610	710	690	880	890	1,070	1,120
	Placed (Firm)	17,610	21,260	18,580	18,600	19,240	21,220	20,930	22,490	21,140	20,620
	Placed (Insurance)	230	280	260	270	350	400	430	480	480	460
	Placed (Other)	2,090	1,060	920	690	640	940	860	830	980	960

AB.8 Placed main scheme applicants to nursing from the UK: 8 days after A level results day

All Main scheme placed routes (excluding Adjustment): difference between cycle and 2017 cycle

Applicant type	Status	2009	2010	2011	2012	2013	2014	2015	2016	2017	2018
Main scheme	Placed (Clearing)	-46%	-58%	-40%	-43%	-34%	-36%	-18%	-17%	0%	4%
	Placed (Firm)	-17%	1%	-12%	-12%	-9%	0%	-1%	6%	0%	-2%
	Placed (Insurance)	-53%	-41%	-46%	-43%	-27%	-17%	-10%	0%	0%	-3%
	Placed (Other)	114%	9%	-6%	-30%	-34%	-4%	-12%	-16%	0%	-2%

Note: The percentage change is not recorded in the above table for groups with fewer than 10 placed applicants in that cycle or in the 2017 cycle.

AB.9 Main scheme applicants placed to nursing through adjustment: 8 days after A level results day

Placed through adjustment: difference between cycle and 2017 cycle

[This chart is not part of this report]

AB.10 Main scheme applicants placed to nursing through adjustment: 8 days after A level results day

Placed through adjustment: applicants at 8 days after A level results day

Applicant type	Status	2009	2010	2011	2012	2013	2014	2015	2016	2017	2018
Main scheme	Placed (Adjustment)	0	0	0	0	10	10	10	0	20	10

AB.11 Main scheme applicants placed to nursing through adjustment: 8 days after A level results day

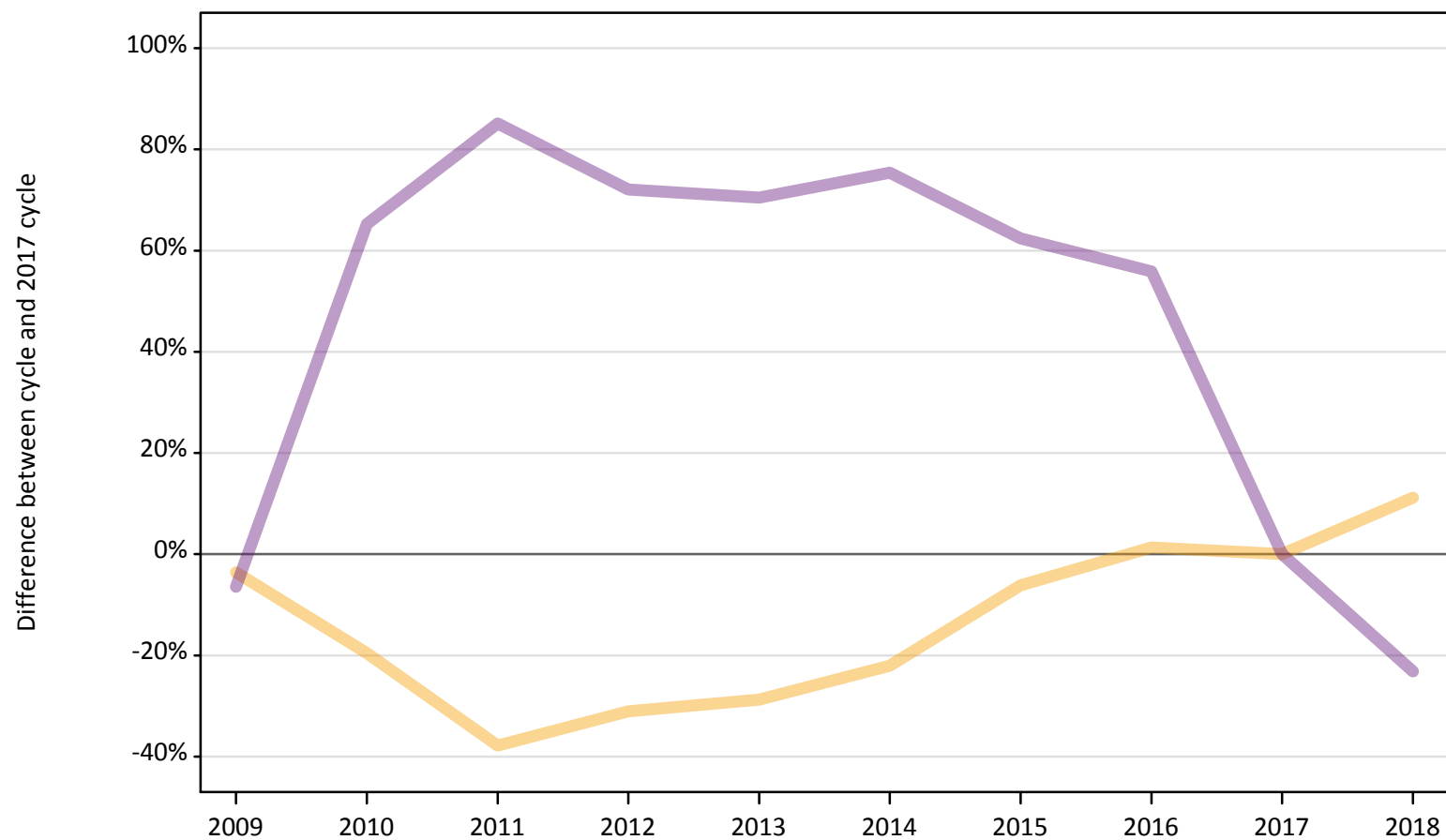
Placed through adjustment: difference between cycle and 2017 cycle

[This table is not part of this report]

AB.12 Main scheme applicants to nursing not currently placed from the UK: 8 days after A level results day

Applicants in unplaced states: difference between cycle and 2017 cycle

— Holding offer
— Free to be placed in Clearing



Note: The percentage change is not plotted in the above chart for groups with fewer than 30 unplaced applicants in any one cycle.

AB.13 Main scheme applicants to nursing not currently placed from the UK: 8 days after A level results day

Applicants in unplaced states: applicants at 8 days after A level results day

Applicant type	Status	2009	2010	2011	2012	2013	2014	2015	2016	2017	2018
Main scheme	Holding offer	4,130	3,450	2,660	2,950	3,050	3,340	4,020	4,340	4,280	4,760
	Free to be placed in Clearing	16,120	28,470	31,890	29,630	29,370	30,210	27,970	26,850	17,220	13,230

AB.14 Main scheme applicants to nursing not currently placed from the UK: 8 days after A level results day

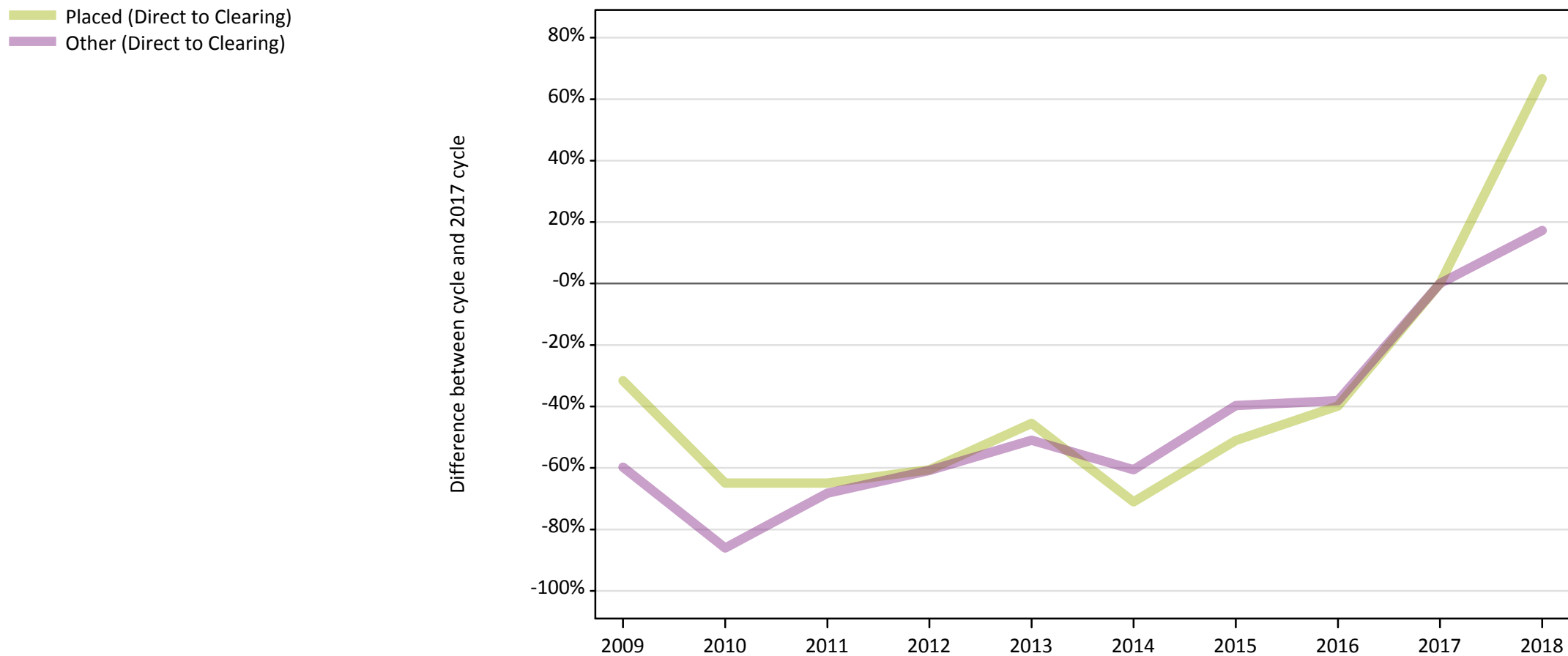
Applicants in unplaced states: difference between cycle and 2017 cycle

Applicant type	Status	2009	2010	2011	2012	2013	2014	2015	2016	2017	2018
Main scheme	Holding offer	-4%	-20%	-38%	-31%	-29%	-22%	-6%	1%	0%	11%
	Free to be placed in Clearing	-6%	65%	85%	72%	71%	75%	62%	56%	0%	-23%

Note: The percentage change is not recorded in the above table for groups with fewer than 10 unplaced applicants in that cycle or in the 2017 cycle.

AB.15 Direct to Clearing applicants from the UK: 8 days after A level results day

Direct to Clearing: difference between cycle and 2017 cycle



Note: The percentage change is not plotted in the above chart for groups with fewer than 30 placed applicants in any one cycle.

AB.16 Direct to Clearing applicants from the UK: 8 days after A level results day

Direct to Clearing 8 days after A level results day

Applicant type	Status	2009	2010	2011	2012	2013	2014	2015	2016	2017	2018
Direct to Clearing	Placed (Direct to Clearing)	160	80	80	90	130	70	110	140	230	390
	Other (Direct to Clearing)	150	50	120	140	180	140	220	230	370	430

AB.17 Direct to Clearing applicants from the UK: 8 days after A level results day

Direct to Clearing: difference between cycle and 2017 cycle

Applicant type	Status	2009	2010	2011	2012	2013	2014	2015	2016	2017	2018
Direct to Clearing	Placed (Direct to Clearing)	-32%	-65%	-65%	-61%	-45%	-71%	-51%	-40%	0%	67%
	Other (Direct to Clearing)	-60%	-86%	-68%	-61%	-51%	-61%	-40%	-38%	0%	17%

Note: The percentage change is not recorded in the above table for groups with fewer than 10 placed applicants in that cycle or in the 2017 cycle.