

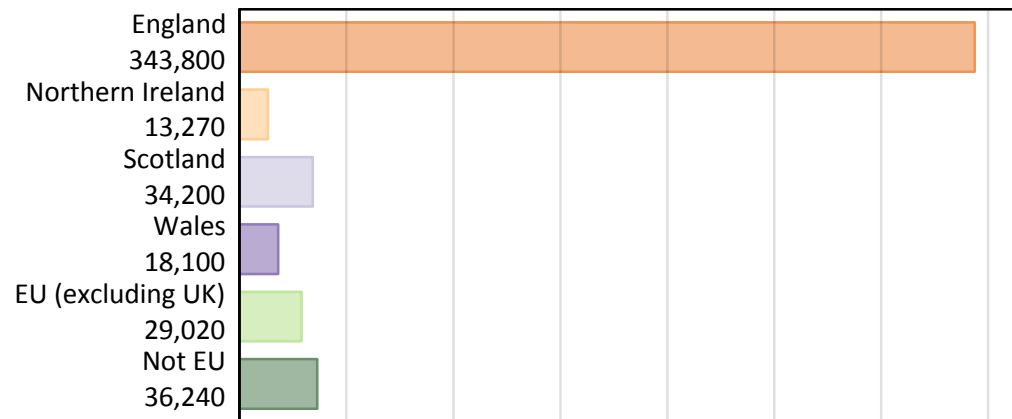
Daily Clearing Analysis: Country

Analysis at 00:05 on Friday 24 August 2018 (8 days after A level results day)

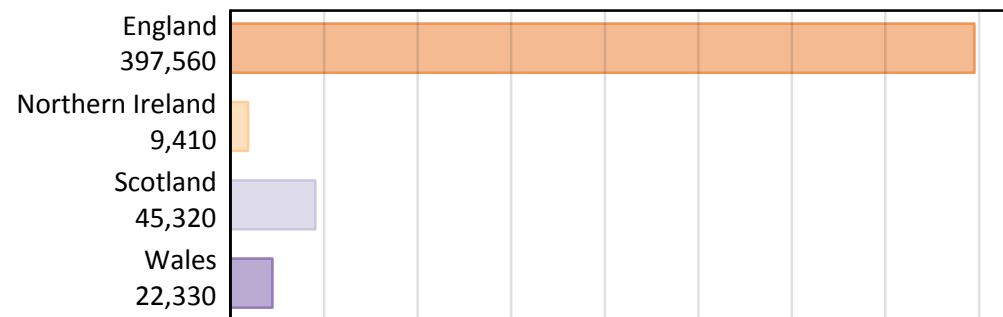
B.1 Placed applicants by country of provider and domicile, 2018 cycle

Domicile of applicant	Country of provider				
	England	Northern Ireland	Scotland	Wales	UK
England	329,110	310	4,590	9,790	343,800
Northern Ireland	3,740	8,410	970	140	13,270
Scotland	1,450	30	32,690	40	34,200
Wales	7,660	10	140	10,290	18,100
EU (excluding UK)	23,540	380	4,010	1,090	29,020
Not EU	32,070	270	2,910	990	36,240
All	397,560	9,410	45,320	22,330	474,630

B.2 Placed applicants by domicile group



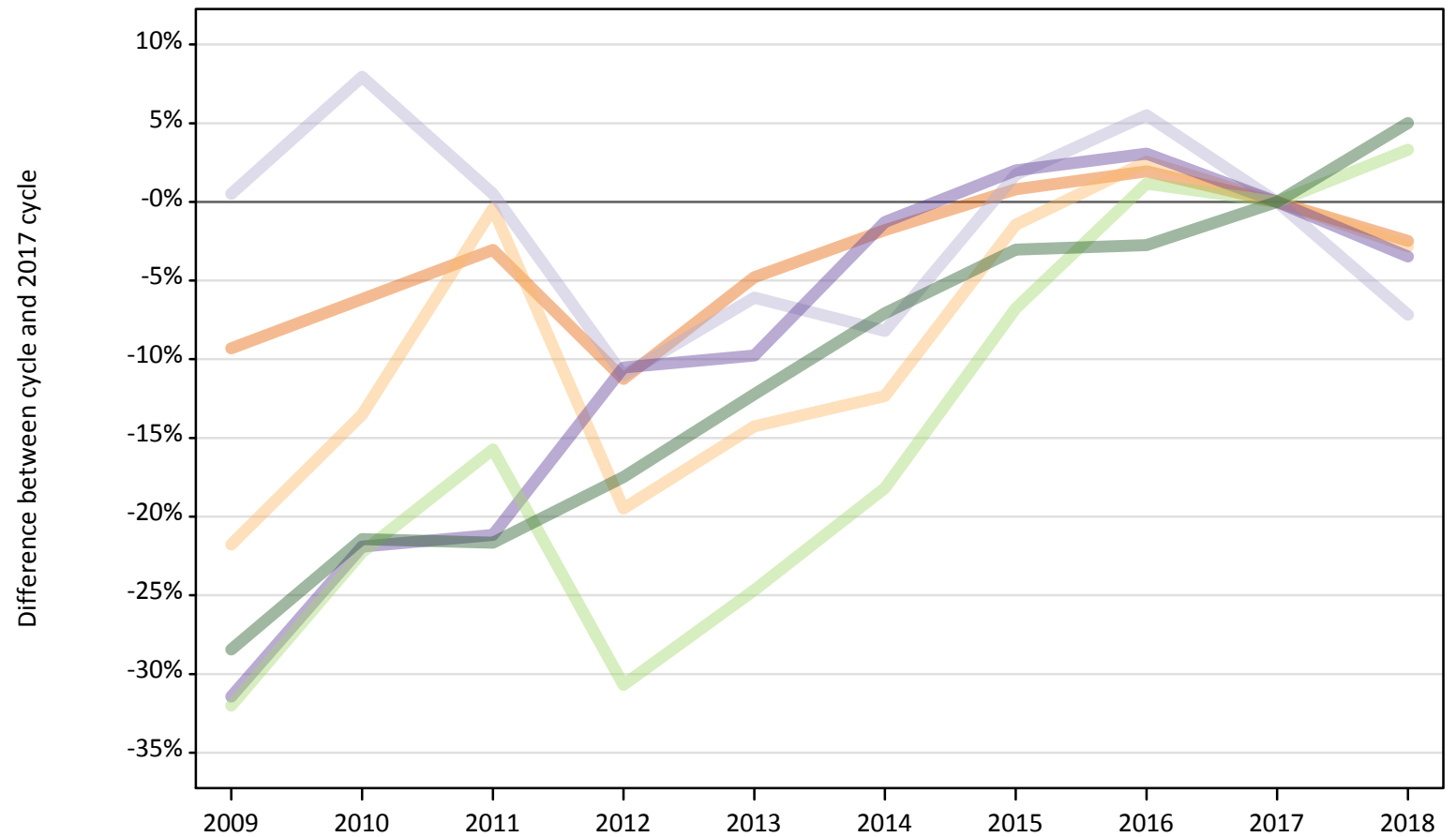
B.3 Placed applicants by country of provider



B.4 Placed applicants at 8 days after A level results day: providers in England

Selected applicant domiciles: difference between cycle and 2017 cycle (at 8 days after A level results day)

- England
- Northern Ireland
- Scotland
- Wales
- EU (excluding UK)
- Not EU



Note: The percentage change is not plotted in the above chart for groups with fewer than 30 placed applicants in any one cycle.

B.5 Placed applicants at 8 days after A level results day: providers in England

Placed applicants by domicile (at 8 days after A level results day)

Domicile of applicant	2009	2010	2011	2012	2013	2014	2015	2016	2017	2018
England	306,060	316,610	327,180	299,550	321,340	331,450	340,170	344,040	337,490	329,110
Northern Ireland	3,010	3,330	3,830	3,100	3,300	3,370	3,790	3,950	3,850	3,740
Scotland	1,570	1,680	1,570	1,390	1,470	1,430	1,590	1,650	1,560	1,450
Wales	5,440	6,200	6,260	7,100	7,160	7,840	8,090	8,180	7,940	7,660
EU (excluding UK)	15,490	17,710	19,190	15,790	17,160	18,640	21,240	23,050	22,780	23,540
Not EU	21,850	24,000	23,930	25,200	26,810	28,380	29,620	29,700	30,540	32,070

B.6 Placed applicants at 8 days after A level results day: providers in England

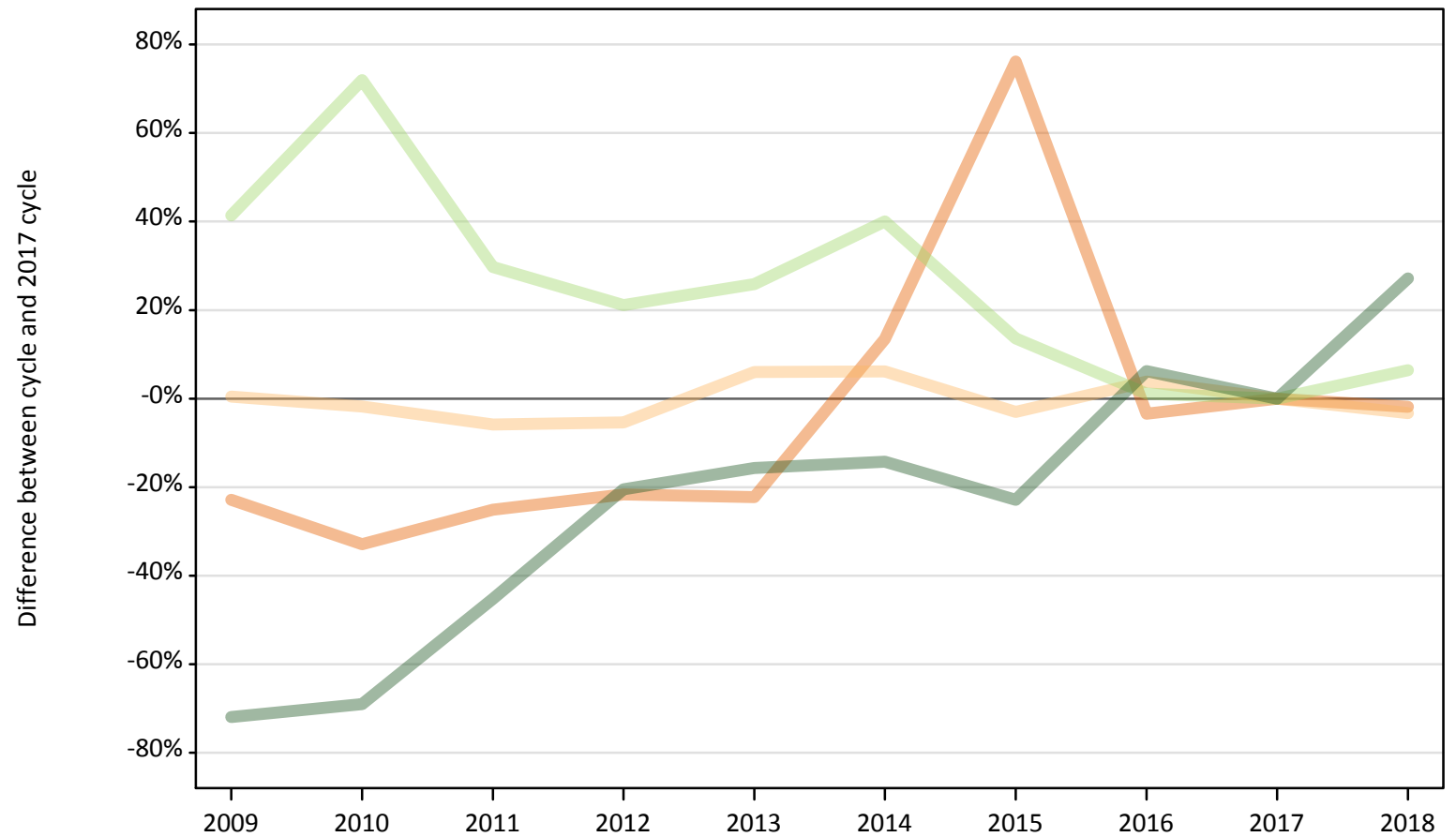
Selected applicant domiciles: difference between cycle and 2017 cycle (at 8 days after A level results day)

Domicile of applicant	2009	2010	2011	2012	2013	2014	2015	2016	2017	2018
England	-9%	-6%	-3%	-11%	-5%	-2%	1%	2%	0%	-2%
Northern Ireland	-22%	-14%	-0%	-19%	-14%	-12%	-1%	3%	0%	-3%
Scotland	1%	8%	1%	-11%	-6%	-8%	2%	6%	0%	-7%
Wales	-31%	-22%	-21%	-11%	-10%	-1%	2%	3%	0%	-3%
EU (excluding UK)	-32%	-22%	-16%	-31%	-25%	-18%	-7%	1%	0%	3%
Not EU	-28%	-21%	-22%	-17%	-12%	-7%	-3%	-3%	0%	5%

Note: The percentage change is not recorded in the above table for groups with fewer than 10 placed applicants in that cycle or in the 2017 cycle.

B.7 Placed applicants at 8 days after A level results day: providers in Northern Ireland
Selected applicant domiciles: difference between cycle and 2017 cycle (at 8 days after A level results day)

- England
- Northern Ireland
- Scotland
- Wales
- EU (excluding UK)
- Not EU



Note: The percentage change is not plotted in the above chart for groups with fewer than 30 placed applicants in any one cycle.

B.8 Placed applicants at 8 days after A level results day: providers in Northern Ireland

Placed applicants by domicile (at 8 days after A level results day)

Domicile of applicant	2009	2010	2011	2012	2013	2014	2015	2016	2017	2018
England	250	210	240	250	250	360	560	310	320	310
Northern Ireland	8,740	8,540	8,190	8,230	9,220	9,230	8,440	9,030	8,700	8,410
Scotland	20	20	20	30	10	20	20	20	30	30
Wales	10	10	10	0	0	10	10	10	10	10
EU (excluding UK)	510	620	470	440	450	500	410	360	360	380
Not EU	60	70	120	170	180	180	160	220	210	270

B.9 Placed applicants at 8 days after A level results day: providers in Northern Ireland

Selected applicant domiciles: difference between cycle and 2017 cycle (at 8 days after A level results day)

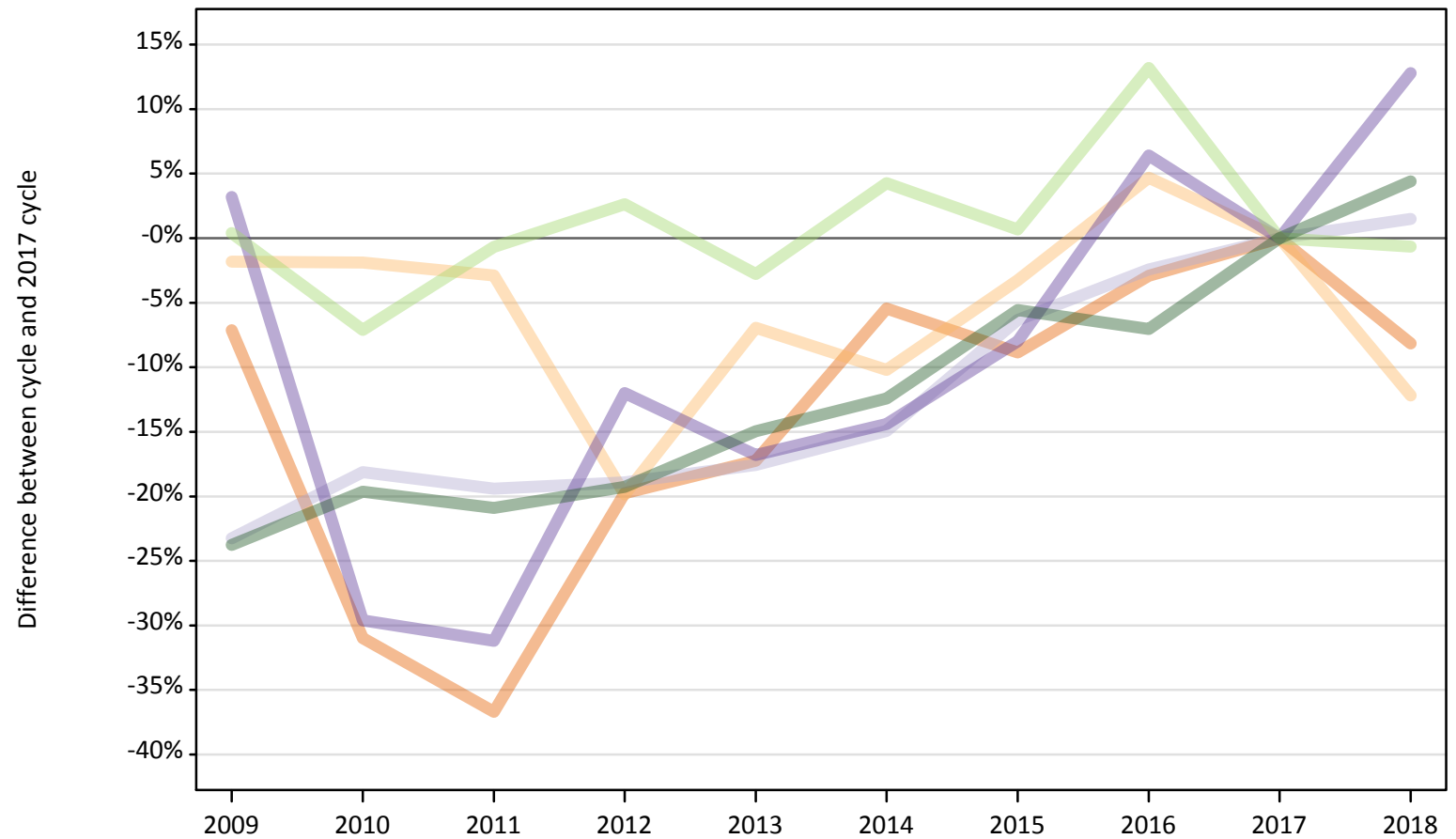
Domicile of applicant	2009	2010	2011	2012	2013	2014	2015	2016	2017	2018
England	-23%	-33%	-25%	-22%	-22%	13%	76%	-3%	0%	-2%
Northern Ireland	0%	-2%	-6%	-5%	6%	6%	-3%	4%	0%	-3%
Scotland	-48%	-23%	-42%	-16%	-61%	-45%	-35%	-42%	0%	-16%
Wales	-7%	-50%	-50%			-43%	-21%	-21%	0%	-29%
EU (excluding UK)	41%	72%	30%	21%	26%	40%	14%	1%	0%	6%
Not EU	-72%	-69%	-45%	-20%	-16%	-14%	-23%	6%	0%	27%

Note: The percentage change is not recorded in the above table for groups with fewer than 10 placed applicants in that cycle or in the 2017 cycle.

B.10 Placed applicants at 8 days after A level results day: providers in Scotland

Selected applicant domiciles: difference between cycle and 2017 cycle (at 8 days after A level results day)

- England
- Northern Ireland
- Scotland
- Wales
- EU (excluding UK)
- Not EU



Note: The percentage change is not plotted in the above chart for groups with fewer than 30 placed applicants in any one cycle.

B.11 Placed applicants at 8 days after A level results day: providers in Scotland

Placed applicants by domicile (at 8 days after A level results day)

Domicile of applicant	2009	2010	2011	2012	2013	2014	2015	2016	2017	2018
England	4,640	3,450	3,170	4,010	4,140	4,730	4,560	4,850	5,000	4,590
Northern Ireland	1,090	1,090	1,080	890	1,030	1,000	1,070	1,160	1,110	970
Scotland	24,720	26,370	25,960	26,120	26,550	27,400	30,170	31,430	32,210	32,690
Wales	130	90	90	110	100	110	120	130	130	140
EU (excluding UK)	4,060	3,750	4,010	4,150	3,930	4,210	4,070	4,570	4,040	4,010
Not EU	2,130	2,240	2,210	2,250	2,370	2,440	2,630	2,590	2,790	2,910

B.12 Placed applicants at 8 days after A level results day: providers in Scotland

Selected applicant domiciles: difference between cycle and 2017 cycle (at 8 days after A level results day)

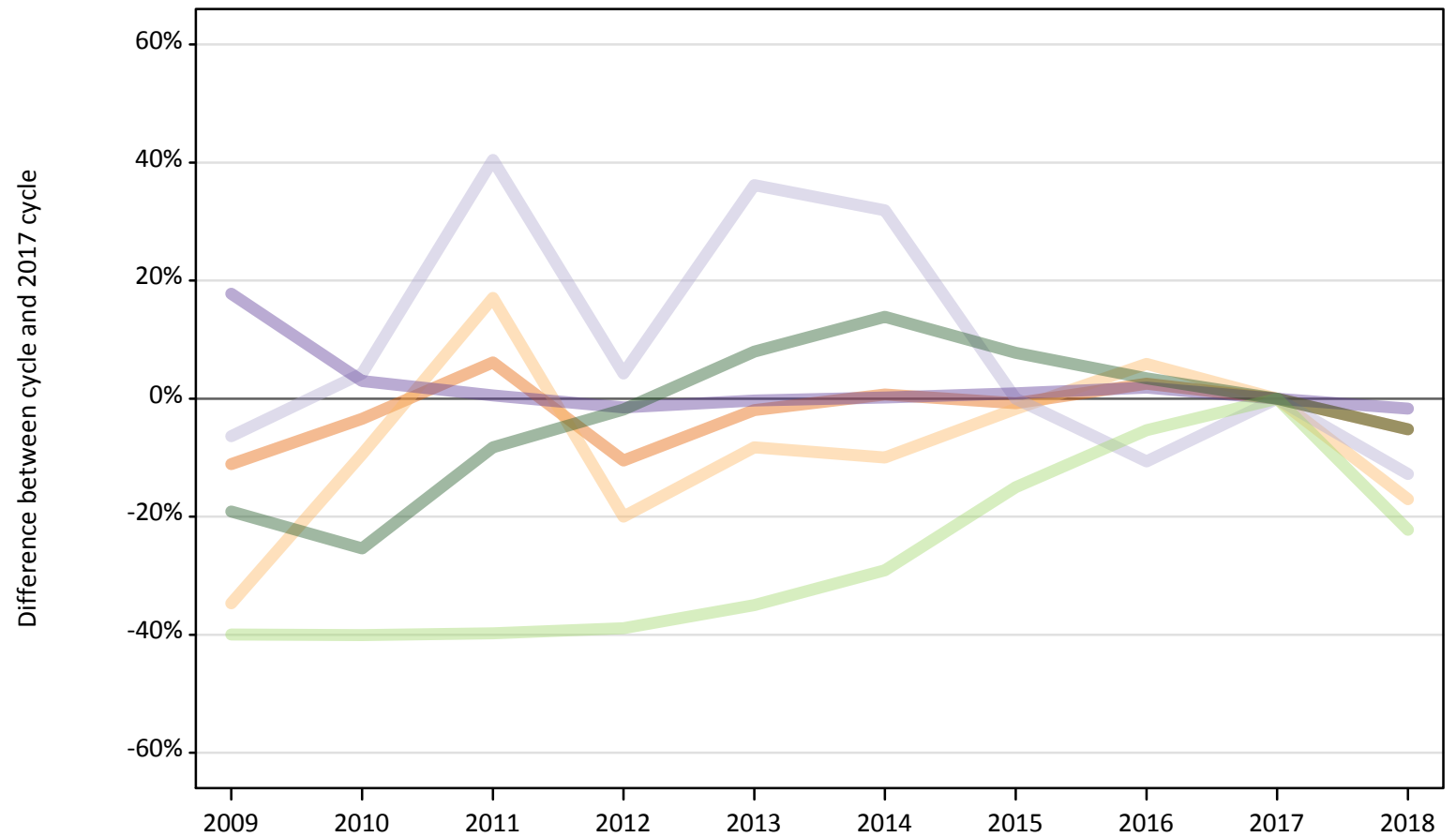
Domicile of applicant	2009	2010	2011	2012	2013	2014	2015	2016	2017	2018
England	-7%	-31%	-37%	-20%	-17%	-5%	-9%	-3%	0%	-8%
Northern Ireland	-2%	-2%	-3%	-20%	-7%	-10%	-3%	5%	0%	-12%
Scotland	-23%	-18%	-19%	-19%	-18%	-15%	-6%	-2%	0%	1%
Wales	3%	-30%	-31%	-12%	-17%	-14%	-8%	6%	0%	13%
EU (excluding UK)	0%	-7%	-1%	3%	-3%	4%	1%	13%	0%	-1%
Not EU	-24%	-20%	-21%	-19%	-15%	-12%	-6%	-7%	0%	4%

Note: The percentage change is not recorded in the above table for groups with fewer than 10 placed applicants in that cycle or in the 2017 cycle.

B.13 Placed applicants at 8 days after A level results day: providers in Wales

Selected applicant domiciles: difference between cycle and 2017 cycle (at 8 days after A level results day)

- England
- Northern Ireland
- Scotland
- Wales
- EU (excluding UK)
- Not EU



Note: The percentage change is not plotted in the above chart for groups with fewer than 30 placed applicants in any one cycle.

B.14 Placed applicants at 8 days after A level results day: providers in Wales

Placed applicants by domicile (at 8 days after A level results day)

Domicile of applicant	2009	2010	2011	2012	2013	2014	2015	2016	2017	2018
England	9,180	9,970	10,960	9,250	10,130	10,400	10,250	10,580	10,330	9,790
Northern Ireland	110	150	200	140	160	150	170	180	170	140
Scotland	40	50	70	50	60	60	50	40	50	40
Wales	12,330	10,780	10,520	10,310	10,430	10,490	10,560	10,660	10,470	10,290
EU (excluding UK)	840	840	840	850	910	990	1,190	1,320	1,400	1,090
Not EU	840	780	960	1,020	1,120	1,190	1,120	1,080	1,040	990

B.15 Placed applicants at 8 days after A level results day: providers in Wales

Selected applicant domiciles: difference between cycle and 2017 cycle (at 8 days after A level results day)

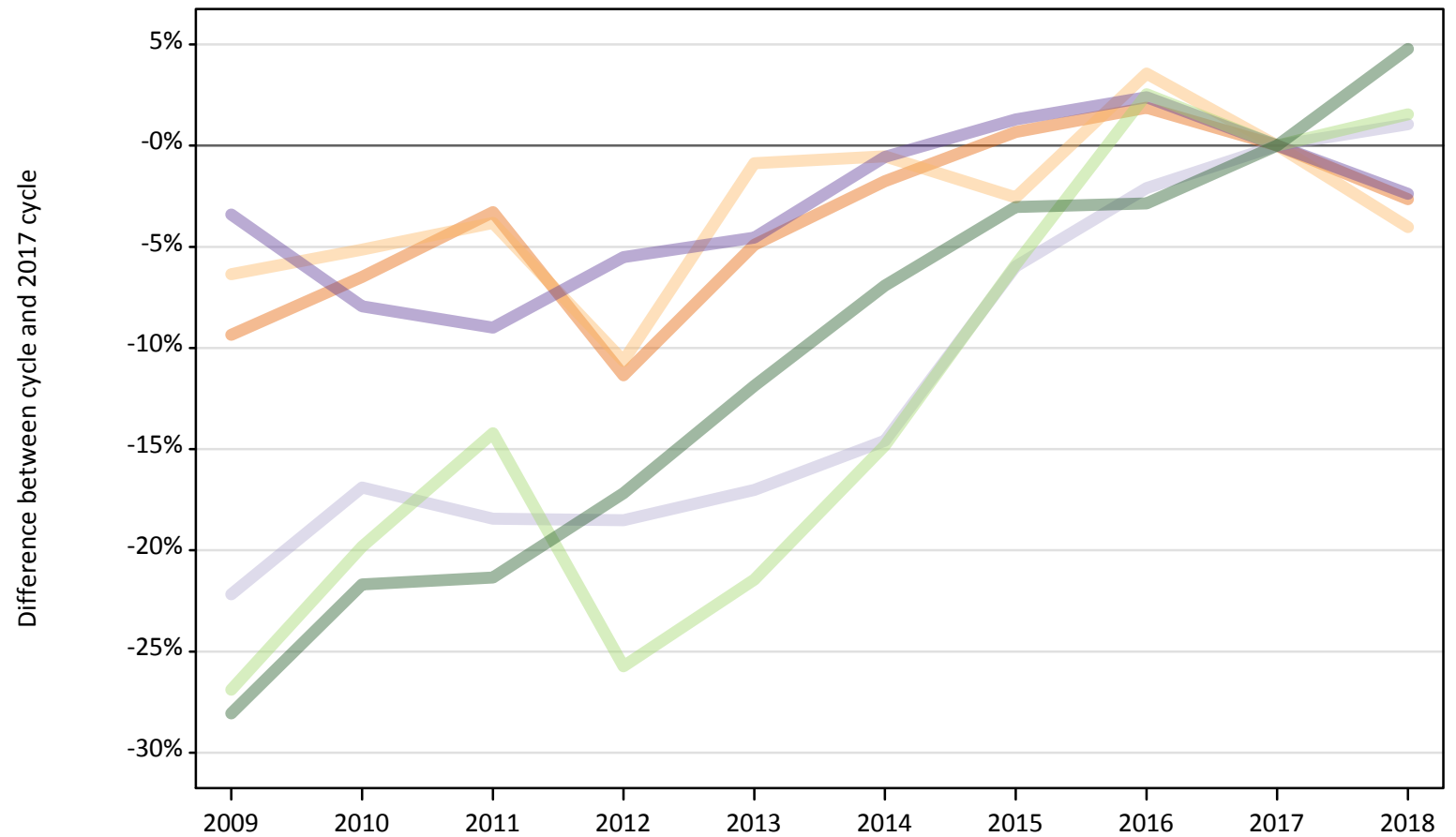
Domicile of applicant	2009	2010	2011	2012	2013	2014	2015	2016	2017	2018
England	-11%	-3%	6%	-10%	-2%	1%	-1%	2%	0%	-5%
Northern Ireland	-35%	-9%	17%	-20%	-8%	-10%	-2%	6%	0%	-17%
Scotland	-6%	4%	40%	4%	36%	32%	0%	-11%	0%	-13%
Wales	18%	3%	1%	-2%	-0%	0%	1%	2%	0%	-2%
EU (excluding UK)	-40%	-40%	-40%	-39%	-35%	-29%	-15%	-5%	0%	-22%
Not EU	-19%	-25%	-8%	-2%	8%	14%	8%	3%	0%	-5%

Note: The percentage change is not recorded in the above table for groups with fewer than 10 placed applicants in that cycle or in the 2017 cycle.

B.16 Placed applicants at 8 days after A level results day: providers in the UK

Selected applicant domiciles: difference between cycle and 2017 cycle (at 8 days after A level results day)

- England
- Northern Ireland
- Scotland
- Wales
- EU (excluding UK)
- Not EU



Note: The percentage change is not plotted in the above chart for groups with fewer than 30 placed applicants in any one cycle.

B.17 Placed applicants at 8 days after A level results day: providers in the UK

Placed applicants by domicile (at 8 days after A level results day)

Domicile of applicant	2009	2010	2011	2012	2013	2014	2015	2016	2017	2018
England	320,130	330,250	341,540	313,060	335,850	346,940	355,540	359,780	353,140	343,800
Northern Ireland	12,950	13,110	13,300	12,350	13,700	13,750	13,470	14,320	13,820	13,270
Scotland	26,340	28,130	27,610	27,580	28,090	28,910	31,830	33,140	33,850	34,200
Wales	17,910	17,070	16,870	17,520	17,700	18,440	18,780	18,990	18,540	18,100
EU (excluding UK)	20,890	22,920	24,520	21,230	22,450	24,340	26,900	29,310	28,580	29,020
Not EU	24,880	27,080	27,200	28,640	30,480	32,190	33,530	33,590	34,580	36,240

B.18 Placed applicants at 8 days after A level results day: providers in the UK

Selected applicant domiciles: difference between cycle and 2017 cycle (at 8 days after A level results day)

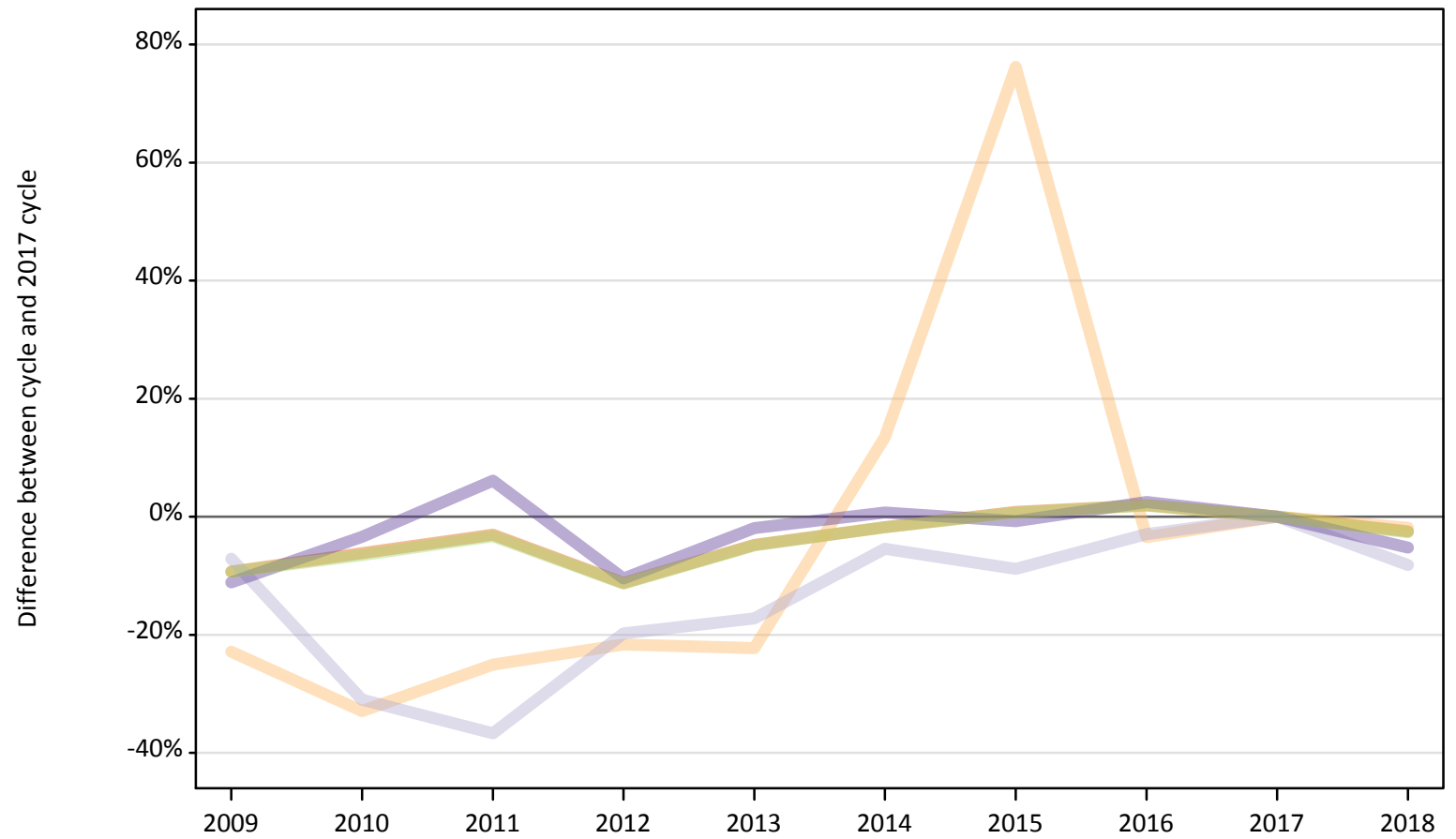
Domicile of applicant	2009	2010	2011	2012	2013	2014	2015	2016	2017	2018
England	-9%	-6%	-3%	-11%	-5%	-2%	1%	2%	0%	-3%
Northern Ireland	-6%	-5%	-4%	-11%	-1%	-1%	-3%	4%	0%	-4%
Scotland	-22%	-17%	-18%	-19%	-17%	-15%	-6%	-2%	0%	1%
Wales	-3%	-8%	-9%	-6%	-5%	-1%	1%	2%	0%	-2%
EU (excluding UK)	-27%	-20%	-14%	-26%	-21%	-15%	-6%	3%	0%	2%
Not EU	-28%	-22%	-21%	-17%	-12%	-7%	-3%	-3%	0%	5%

Note: The percentage change is not recorded in the above table for groups with fewer than 10 placed applicants in that cycle or in the 2017 cycle.

B.19 Placed applicants at 8 days after A level results day: domiciled in England

Selected provider countries: difference between cycle and 2017 cycle (at 8 days after A level results day)

- England
- Northern Ireland
- Scotland
- Wales
- UK



Note: The percentage change is not plotted in the above chart for groups with fewer than 30 placed applicants in any one cycle.

B.20 Placed applicants at 8 days after A level results day: domiciled in England

Placed applicants by provider country (at 8 days after A level results day)

Country of provider	2009	2010	2011	2012	2013	2014	2015	2016	2017	2018
England	306,060	316,610	327,180	299,550	321,340	331,450	340,170	344,040	337,490	329,110
Northern Ireland	250	210	240	250	250	360	560	310	320	310
Scotland	4,640	3,450	3,170	4,010	4,140	4,730	4,560	4,850	5,000	4,590
Wales	9,180	9,970	10,960	9,250	10,130	10,400	10,250	10,580	10,330	9,790
UK	320,130	330,250	341,540	313,060	335,850	346,940	355,540	359,780	353,140	343,800

B.21 Placed applicants at 8 days after A level results day: domiciled in England

Selected provider countries: difference between cycle and 2017 cycle (at 8 days after A level results day)

Country of provider	2009	2010	2011	2012	2013	2014	2015	2016	2017	2018
England	-9%	-6%	-3%	-11%	-5%	-2%	1%	2%	0%	-2%
Northern Ireland	-23%	-33%	-25%	-22%	-22%	13%	76%	-3%	0%	-2%
Scotland	-7%	-31%	-37%	-20%	-17%	-5%	-9%	-3%	0%	-8%
Wales	-11%	-3%	6%	-10%	-2%	1%	-1%	2%	0%	-5%
UK	-9%	-6%	-3%	-11%	-5%	-2%	1%	2%	0%	-3%

Note: The percentage change is not recorded in the above table for groups with fewer than 10 placed applicants in that cycle or in the 2017 cycle.

B.22 Placed applicants at 8 days after A level results day: domiciled in Northern Ireland
Selected provider countries: difference between cycle and 2017 cycle (at 8 days after A level results day)

- England
- Northern Ireland
- Scotland
- Wales
- UK



Note: The percentage change is not plotted in the above chart for groups with fewer than 30 placed applicants in any one cycle.

B.23 Placed applicants at 8 days after A level results day: domiciled in Northern Ireland

Placed applicants by provider country (at 8 days after A level results day)

Country of provider	2009	2010	2011	2012	2013	2014	2015	2016	2017	2018
England	3,010	3,330	3,830	3,100	3,300	3,370	3,790	3,950	3,850	3,740
Northern Ireland	8,740	8,540	8,190	8,230	9,220	9,230	8,440	9,030	8,700	8,410
Scotland	1,090	1,090	1,080	890	1,030	1,000	1,070	1,160	1,110	970
Wales	110	150	200	140	160	150	170	180	170	140
UK	12,950	13,110	13,300	12,350	13,700	13,750	13,470	14,320	13,820	13,270

B.24 Placed applicants at 8 days after A level results day: domiciled in Northern Ireland

Selected provider countries: difference between cycle and 2017 cycle (at 8 days after A level results day)

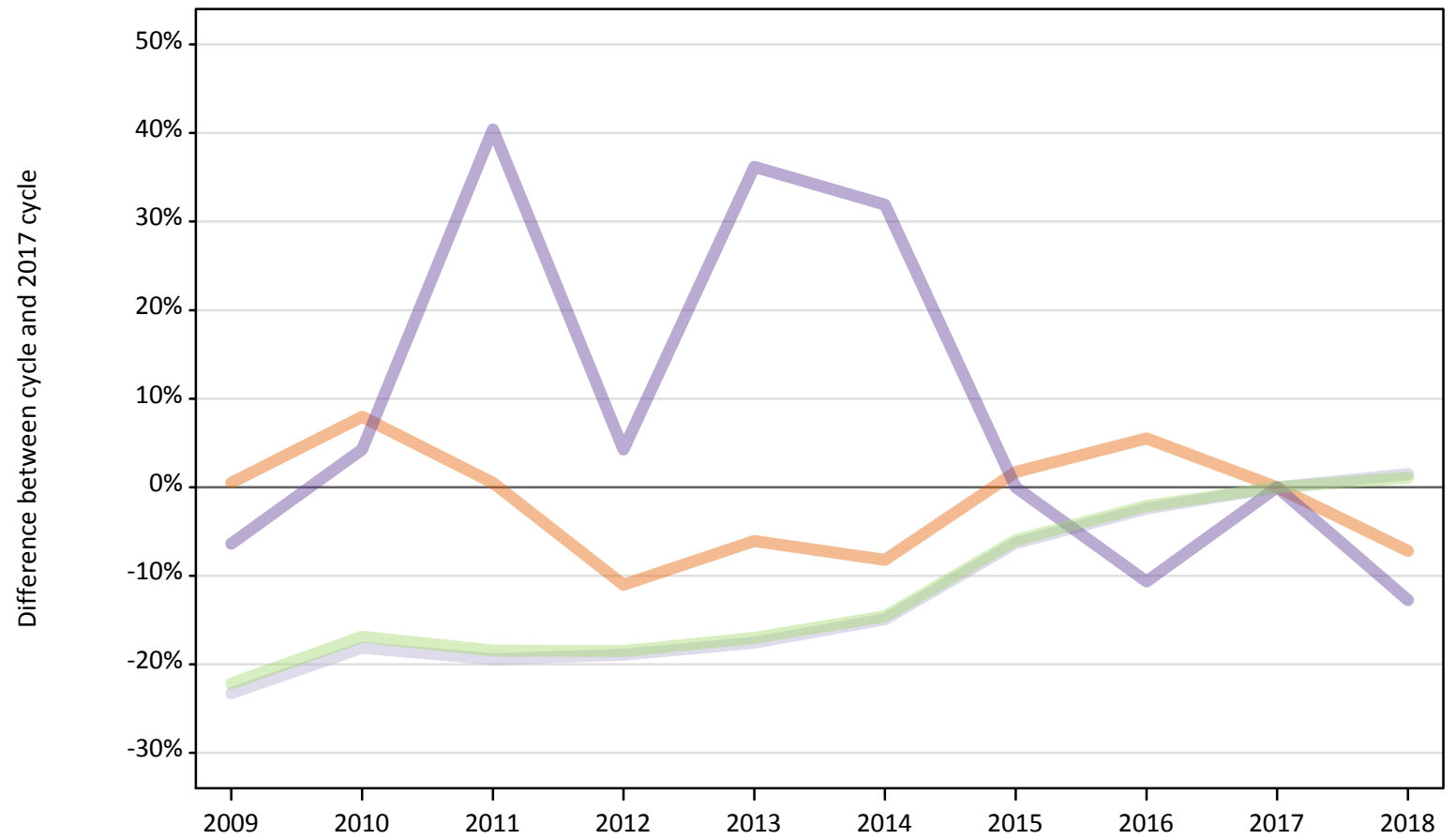
Country of provider	2009	2010	2011	2012	2013	2014	2015	2016	2017	2018
England	-22%	-14%	-0%	-19%	-14%	-12%	-1%	3%	0%	-3%
Northern Ireland	0%	-2%	-6%	-5%	6%	6%	-3%	4%	0%	-3%
Scotland	-2%	-2%	-3%	-20%	-7%	-10%	-3%	5%	0%	-12%
Wales	-35%	-9%	17%	-20%	-8%	-10%	-2%	6%	0%	-17%
UK	-6%	-5%	-4%	-11%	-1%	-1%	-3%	4%	0%	-4%

Note: The percentage change is not recorded in the above table for groups with fewer than 10 placed applicants in that cycle or in the 2017 cycle.

B.25 Placed applicants at 8 days after A level results day: domiciled in Scotland

Selected provider countries: difference between cycle and 2017 cycle (at 8 days after A level results day)

- England
- Northern Ireland
- Scotland
- Wales
- UK



Note: The percentage change is not plotted in the above chart for groups with fewer than 30 placed applicants in any one cycle.

B.26 Placed applicants at 8 days after A level results day: domiciled in Scotland

Placed applicants by provider country (at 8 days after A level results day)

Country of provider	2009	2010	2011	2012	2013	2014	2015	2016	2017	2018
England	1,570	1,680	1,570	1,390	1,470	1,430	1,590	1,650	1,560	1,450
Northern Ireland	20	20	20	30	10	20	20	20	30	30
Scotland	24,720	26,370	25,960	26,120	26,550	27,400	30,170	31,430	32,210	32,690
Wales	40	50	70	50	60	60	50	40	50	40
UK	26,340	28,130	27,610	27,580	28,090	28,910	31,830	33,140	33,850	34,200

B.27 Placed applicants at 8 days after A level results day: domiciled in Scotland

Selected provider countries: difference between cycle and 2017 cycle (at 8 days after A level results day)

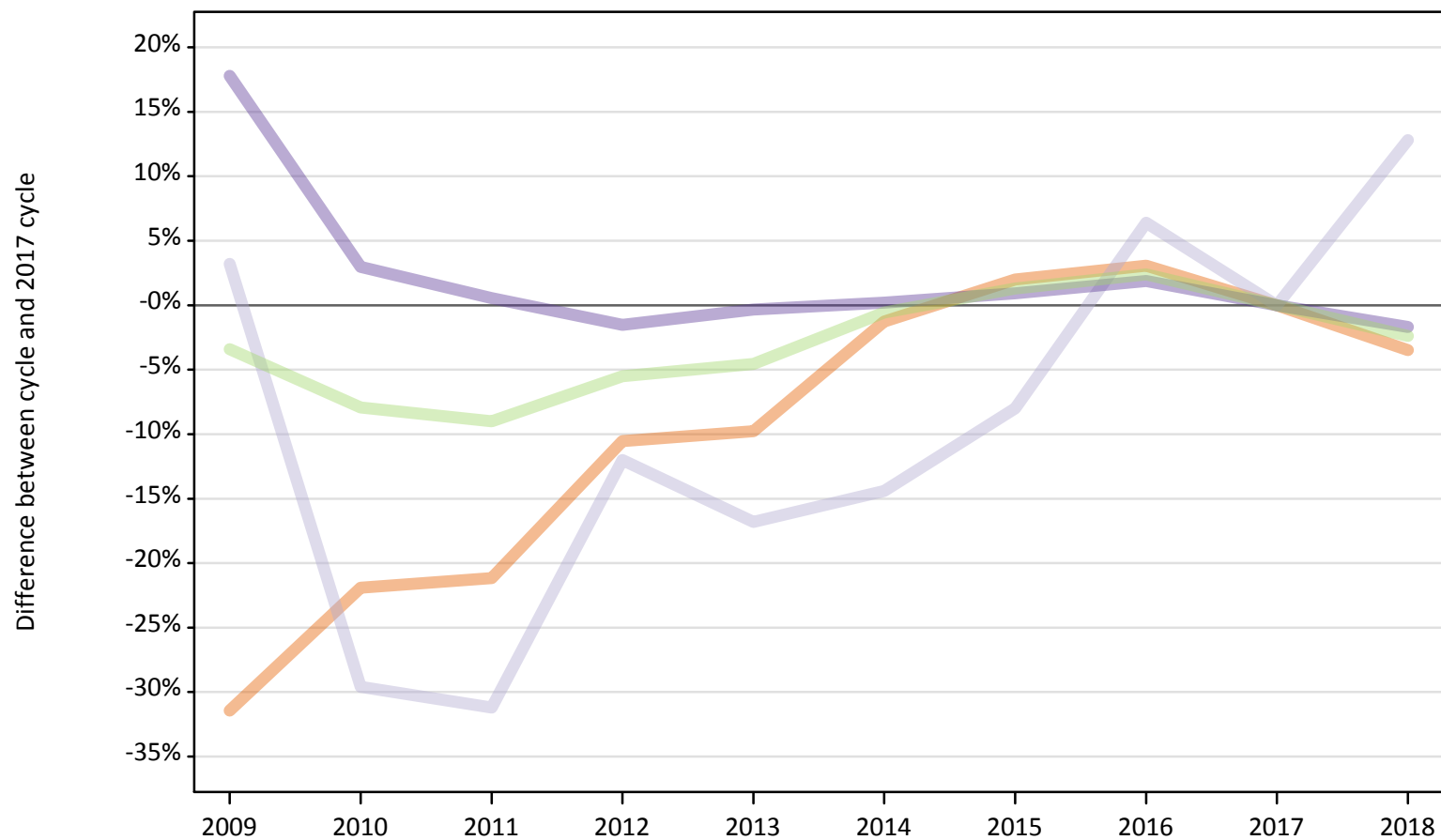
Country of provider	2009	2010	2011	2012	2013	2014	2015	2016	2017	2018
England	1%	8%	1%	-11%	-6%	-8%	2%	6%	0%	-7%
Northern Ireland	-48%	-23%	-42%	-16%	-61%	-45%	-35%	-42%	0%	-16%
Scotland	-23%	-18%	-19%	-19%	-18%	-15%	-6%	-2%	0%	1%
Wales	-6%	4%	40%	4%	36%	32%	0%	-11%	0%	-13%
UK	-22%	-17%	-18%	-19%	-17%	-15%	-6%	-2%	0%	1%

Note: The percentage change is not recorded in the above table for groups with fewer than 10 placed applicants in that cycle or in the 2017 cycle.

B.28 Placed applicants at 8 days after A level results day: domiciled in Wales

Selected provider countries: difference between cycle and 2017 cycle (at 8 days after A level results day)

- England
- Northern Ireland
- Scotland
- Wales
- UK



Note: The percentage change is not plotted in the above chart for groups with fewer than 30 placed applicants in any one cycle.

B.29 Placed applicants at 8 days after A level results day: domiciled in Wales

Placed applicants by provider country (at 8 days after A level results day)

Country of provider	2009	2010	2011	2012	2013	2014	2015	2016	2017	2018
England	5,440	6,200	6,260	7,100	7,160	7,840	8,090	8,180	7,940	7,660
Northern Ireland	10	10	10	0	0	10	10	10	10	10
Scotland	130	90	90	110	100	110	120	130	130	140
Wales	12,330	10,780	10,520	10,310	10,430	10,490	10,560	10,660	10,470	10,290
UK	17,910	17,070	16,870	17,520	17,700	18,440	18,780	18,990	18,540	18,100

B.30 Placed applicants at 8 days after A level results day: domiciled in Wales

Selected provider countries: difference between cycle and 2017 cycle (at 8 days after A level results day)

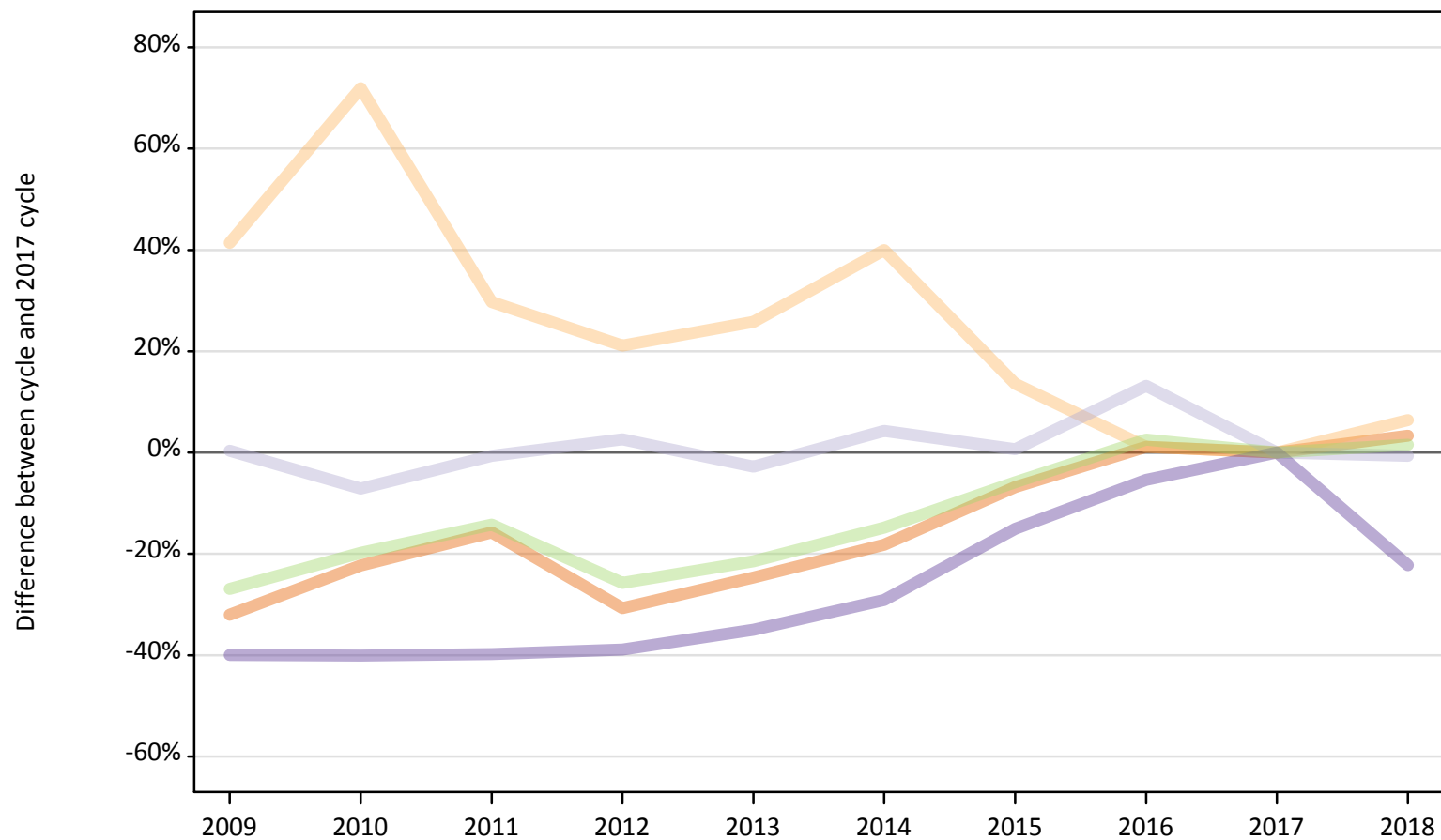
Country of provider	2009	2010	2011	2012	2013	2014	2015	2016	2017	2018
England	-31%	-22%	-21%	-11%	-10%	-1%	2%	3%	0%	-3%
Northern Ireland	-7%	-50%	-50%			-43%	-21%	-21%	0%	-29%
Scotland	3%	-30%	-31%	-12%	-17%	-14%	-8%	6%	0%	13%
Wales	18%	3%	1%	-2%	-0%	0%	1%	2%	0%	-2%
UK	-3%	-8%	-9%	-6%	-5%	-1%	1%	2%	0%	-2%

Note: The percentage change is not recorded in the above table for groups with fewer than 10 placed applicants in that cycle or in the 2017 cycle.

B.31 Placed applicants at 8 days after A level results day: domiciled in EU (excluding UK)

Selected provider countries: difference between cycle and 2017 cycle (at 8 days after A level results day)

- England
- Northern Ireland
- Scotland
- Wales
- UK



Note: The percentage change is not plotted in the above chart for groups with fewer than 30 placed applicants in any one cycle.

B.32 Placed applicants at 8 days after A level results day: domiciled in EU (excluding UK)

Placed applicants by provider country (at 8 days after A level results day)

Country of provider	2009	2010	2011	2012	2013	2014	2015	2016	2017	2018
England	15,490	17,710	19,190	15,790	17,160	18,640	21,240	23,050	22,780	23,540
Northern Ireland	510	620	470	440	450	500	410	360	360	380
Scotland	4,060	3,750	4,010	4,150	3,930	4,210	4,070	4,570	4,040	4,010
Wales	840	840	840	850	910	990	1,190	1,320	1,400	1,090
UK	20,890	22,920	24,520	21,230	22,450	24,340	26,900	29,310	28,580	29,020

B.33 Placed applicants at 8 days after A level results day: domiciled in EU (excluding UK)

Selected provider countries: difference between cycle and 2017 cycle (at 8 days after A level results day)

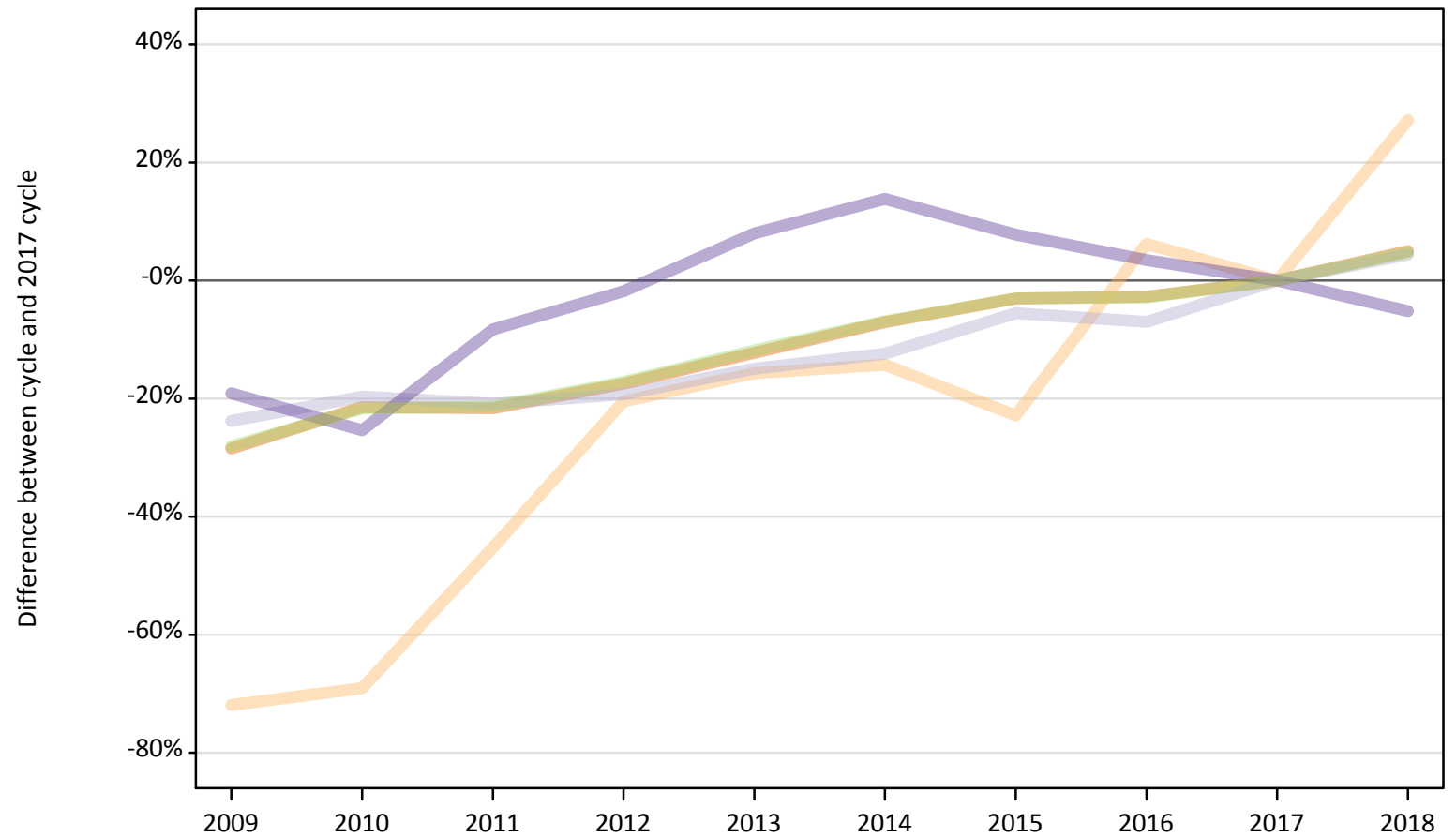
Country of provider	2009	2010	2011	2012	2013	2014	2015	2016	2017	2018
England	-32%	-22%	-16%	-31%	-25%	-18%	-7%	1%	0%	3%
Northern Ireland	41%	72%	30%	21%	26%	40%	14%	1%	0%	6%
Scotland	0%	-7%	-1%	3%	-3%	4%	1%	13%	0%	-1%
Wales	-40%	-40%	-40%	-39%	-35%	-29%	-15%	-5%	0%	-22%
UK	-27%	-20%	-14%	-26%	-21%	-15%	-6%	3%	0%	2%

Note: The percentage change is not recorded in the above table for groups with fewer than 10 placed applicants in that cycle or in the 2017 cycle.

B.34 Placed applicants at 8 days after A level results day: domiciled in Not EU

Selected provider countries: difference between cycle and 2017 cycle (at 8 days after A level results day)

- England
- Northern Ireland
- Scotland
- Wales
- UK



Note: The percentage change is not plotted in the above chart for groups with fewer than 30 placed applicants in any one cycle.

B.35 Placed applicants at 8 days after A level results day: domiciled in Not EU

Placed applicants by provider country (at 8 days after A level results day)

Country of provider	2009	2010	2011	2012	2013	2014	2015	2016	2017	2018
England	21,850	24,000	23,930	25,200	26,810	28,380	29,620	29,700	30,540	32,070
Northern Ireland	60	70	120	170	180	180	160	220	210	270
Scotland	2,130	2,240	2,210	2,250	2,370	2,440	2,630	2,590	2,790	2,910
Wales	840	780	960	1,020	1,120	1,190	1,120	1,080	1,040	990
UK	24,880	27,080	27,200	28,640	30,480	32,190	33,530	33,590	34,580	36,240

B.36 Placed applicants at 8 days after A level results day: domiciled in Not EU

Selected provider countries: difference between cycle and 2017 cycle (at 8 days after A level results day)

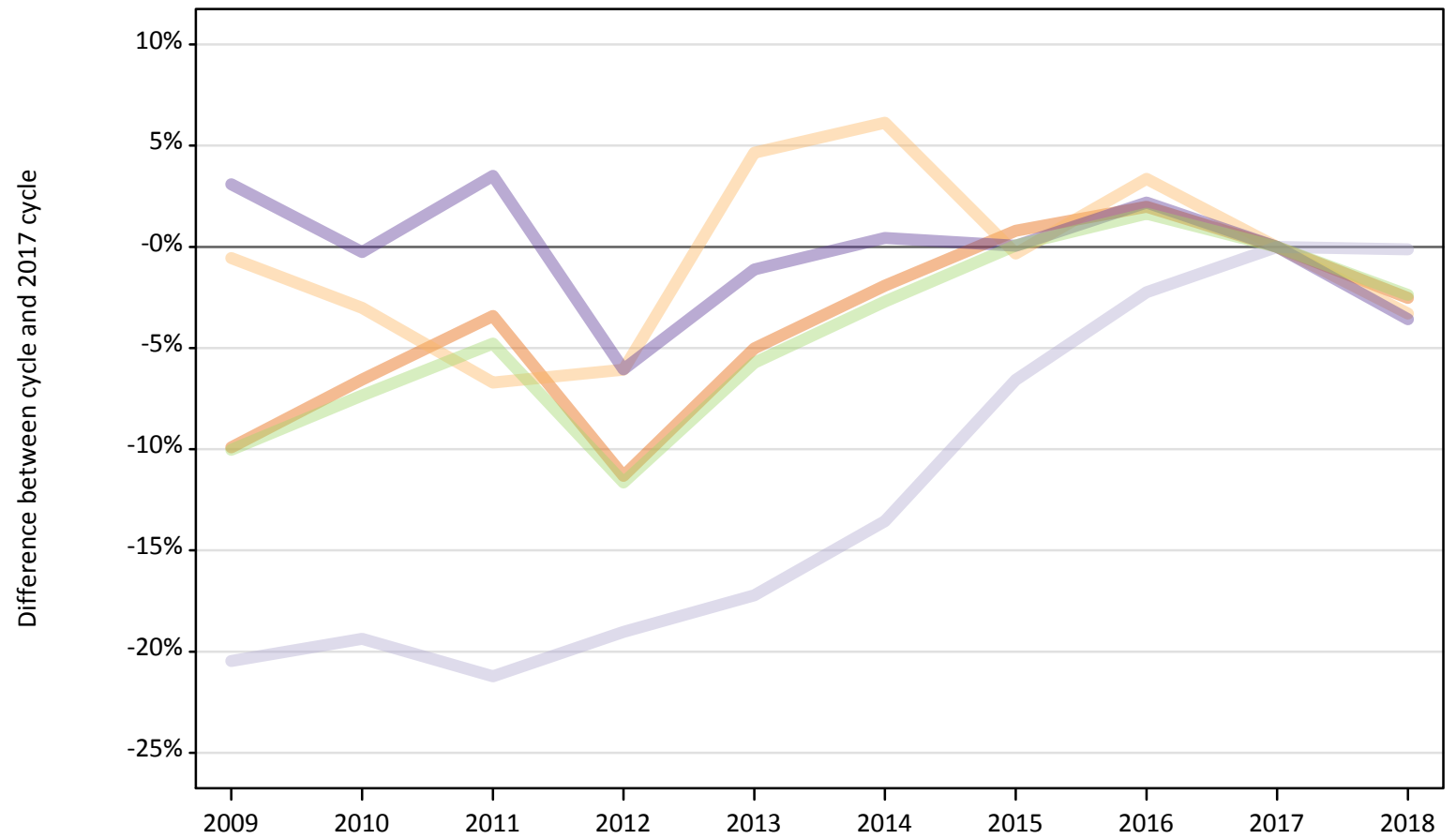
Country of provider	2009	2010	2011	2012	2013	2014	2015	2016	2017	2018
England	-28%	-21%	-22%	-17%	-12%	-7%	-3%	-3%	0%	5%
Northern Ireland	-72%	-69%	-45%	-20%	-16%	-14%	-23%	6%	0%	27%
Scotland	-24%	-20%	-21%	-19%	-15%	-12%	-6%	-7%	0%	4%
Wales	-19%	-25%	-8%	-2%	8%	14%	8%	3%	0%	-5%
UK	-28%	-22%	-21%	-17%	-12%	-7%	-3%	-3%	0%	5%

Note: The percentage change is not recorded in the above table for groups with fewer than 10 placed applicants in that cycle or in the 2017 cycle.

B.37 Placed applicants at 8 days after A level results day: domiciled in UK

Selected provider countries: difference between cycle and 2017 cycle (at 8 days after A level results day)

- England
- Northern Ireland
- Scotland
- Wales
- UK



Note: The percentage change is not plotted in the above chart for groups with fewer than 30 placed applicants in any one cycle.

B.38 Placed applicants at 8 days after A level results day: domiciled in UK

Placed applicants by provider country (at 8 days after A level results day)

Country of provider	2009	2010	2011	2012	2013	2014	2015	2016	2017	2018
England	316,080	327,820	338,840	311,140	333,270	344,090	353,650	357,810	350,840	341,960
Northern Ireland	9,010	8,790	8,450	8,510	9,480	9,620	9,030	9,370	9,060	8,760
Scotland	30,580	30,990	30,280	31,130	31,820	33,230	35,920	37,580	38,440	38,390
Wales	21,660	20,950	21,750	19,740	20,780	21,100	21,020	21,470	21,010	20,260
UK	377,330	388,560	399,320	370,520	395,340	408,040	419,620	426,220	419,350	409,370

B.39 Placed applicants at 8 days after A level results day: domiciled in UK

Selected provider countries: difference between cycle and 2017 cycle (at 8 days after A level results day)

Country of provider	2009	2010	2011	2012	2013	2014	2015	2016	2017	2018
England	-10%	-7%	-3%	-11%	-5%	-2%	1%	2%	0%	-3%
Northern Ireland	-1%	-3%	-7%	-6%	5%	6%	-0%	3%	0%	-3%
Scotland	-20%	-19%	-21%	-19%	-17%	-14%	-7%	-2%	0%	-0%
Wales	3%	-0%	4%	-6%	-1%	0%	0%	2%	0%	-4%
UK	-10%	-7%	-5%	-12%	-6%	-3%	0%	2%	0%	-2%

Note: The percentage change is not recorded in the above table for groups with fewer than 10 placed applicants in that cycle or in the 2017 cycle.