

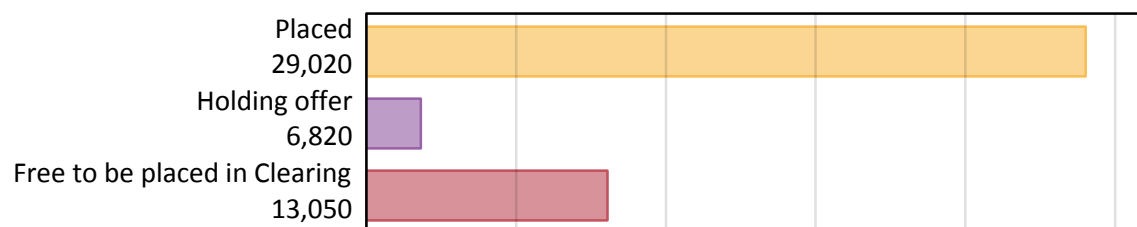
Daily Clearing Analysis: Overview

Analysis at 00:05 on Friday 24 August 2018 (8 days after A level results day)

A.1 Applicants by type and status from the EU - excluding UK, 2018 cycle

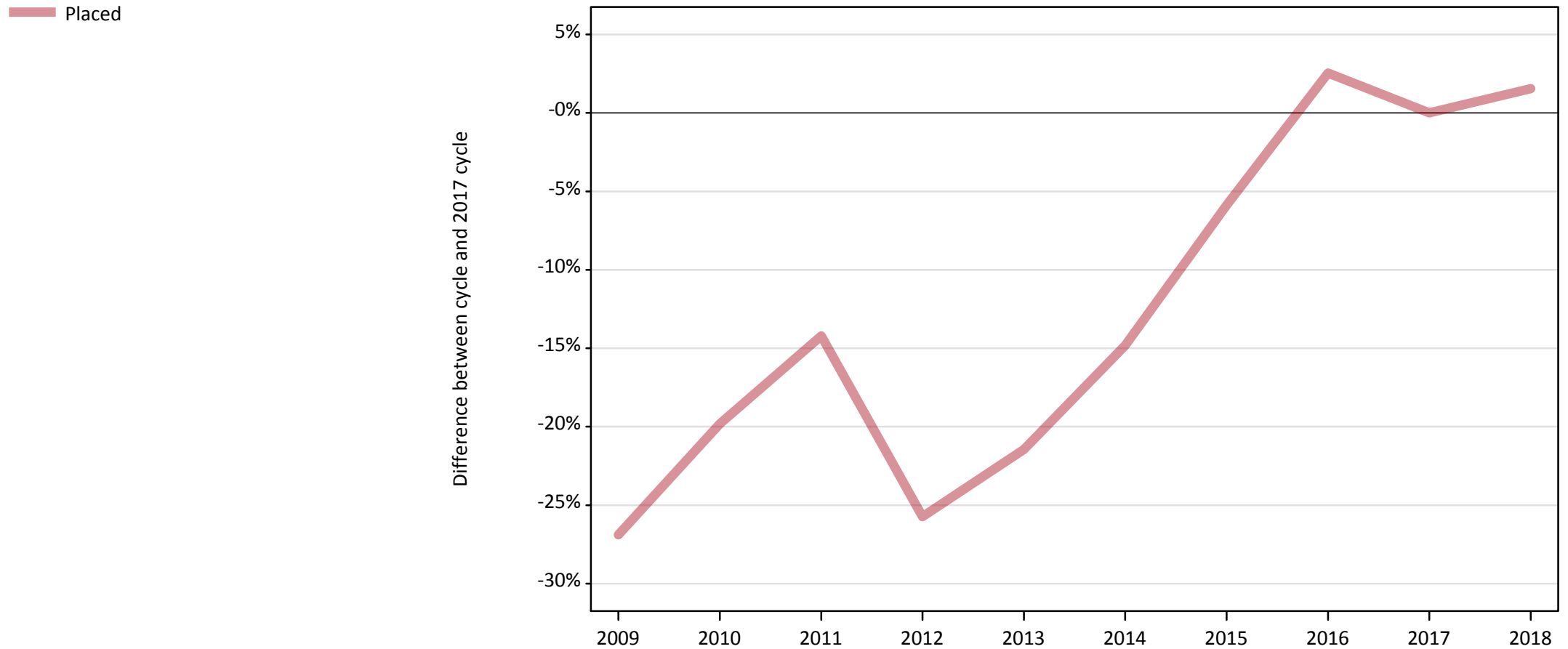
Applicant type	Status	2018
Main scheme	Placed (Clearing)	1,220
	Placed (Adjustment)	30
	Placed (Firm)	24,130
	Placed (Insurance)	2,090
	Placed (Other)	1,210
	Holding offer	6,820
	Free to be placed in Clearing	13,050
Direct to Clearing	Placed (Direct to Clearing)	340
	Other (Direct to Clearing)	390
All applicants	Placed	29,020

A.2 Summary of applicants who are placed, holding offers or free to be placed in Clearing (the EU - excluding UK)



A.3 All placed applicants from the EU - excluding UK: 8 days after A level results day

All placed applicants: difference between cycle and 2017 cycle



Note: The percentage change is not plotted in the above chart for groups with fewer than 30 placed applicants in any one cycle.

A.4 All placed applicants from the EU - excluding UK: 8 days after A level results day

All placed applicants: applicants at 8 days after A level results day

Applicant type	Status	2009	2010	2011	2012	2013	2014	2015	2016	2017	2018
All applicants	Placed	20,890	22,920	24,520	21,230	22,450	24,340	26,900	29,310	28,580	29,020

A.5 All placed applicants from the EU - excluding UK: 8 days after A level results day

All placed applicants: difference between cycle and 2017 cycle

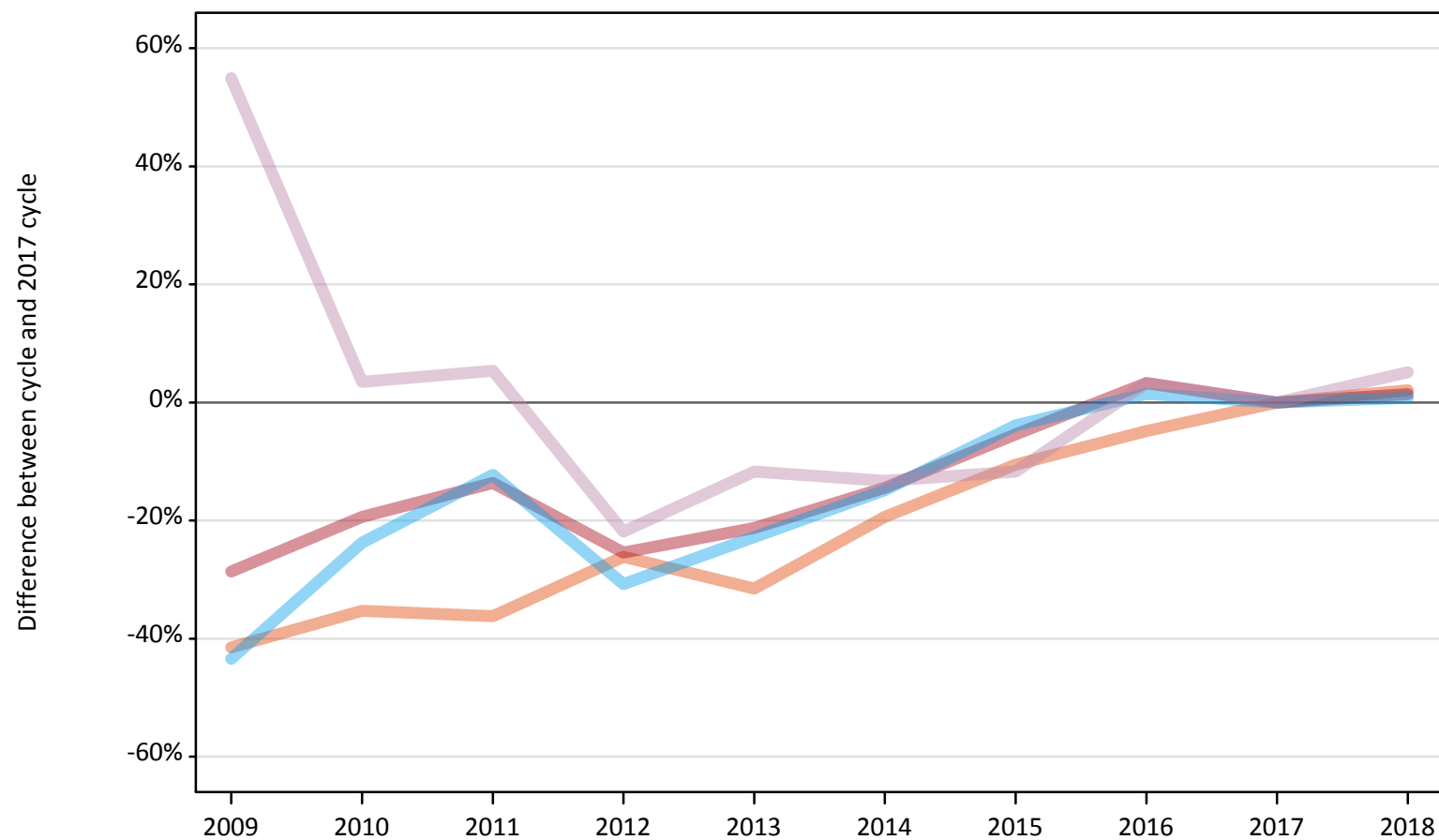
Applicant type	Status	2009	2010	2011	2012	2013	2014	2015	2016	2017	2018
All applicants	Placed	-27%	-20%	-14%	-26%	-21%	-15%	-6%	3%	0%	2%

Note: The percentage change is not recorded in the above table for groups with fewer than 10 placed applicants in that cycle or in the 2017 cycle.

A.6 Placed main scheme applicants from the EU - excluding UK: 8 days after A level results day

All Main scheme placed routes (excluding Adjustment): difference between cycle and 2017 cycle

- Placed (Clearing)
- Placed (Firm)
- Placed (Insurance)
- Placed (Other)



Note: The percentage change is not plotted in the above chart for groups with fewer than 30 placed applicants in any one cycle.

A.7 Placed main scheme applicants from the EU - excluding UK: 8 days after A level results day

All Main scheme placed routes (excluding Adjustment): applicants at 8 days after A level results day

Applicant type	Status	2009	2010	2011	2012	2013	2014	2015	2016	2017	2018
Main scheme	Placed (Clearing)	700	780	760	890	820	970	1,070	1,140	1,200	1,220
	Placed (Firm)	16,990	19,180	20,550	17,740	18,730	20,350	22,510	24,580	23,800	24,130
	Placed (Insurance)	1,170	1,580	1,820	1,430	1,600	1,760	1,990	2,100	2,070	2,090
	Placed (Other)	1,790	1,190	1,210	900	1,020	1,000	1,020	1,190	1,150	1,210

A.8 Placed main scheme applicants from the EU - excluding UK: 8 days after A level results day

All Main scheme placed routes (excluding Adjustment): difference between cycle and 2017 cycle

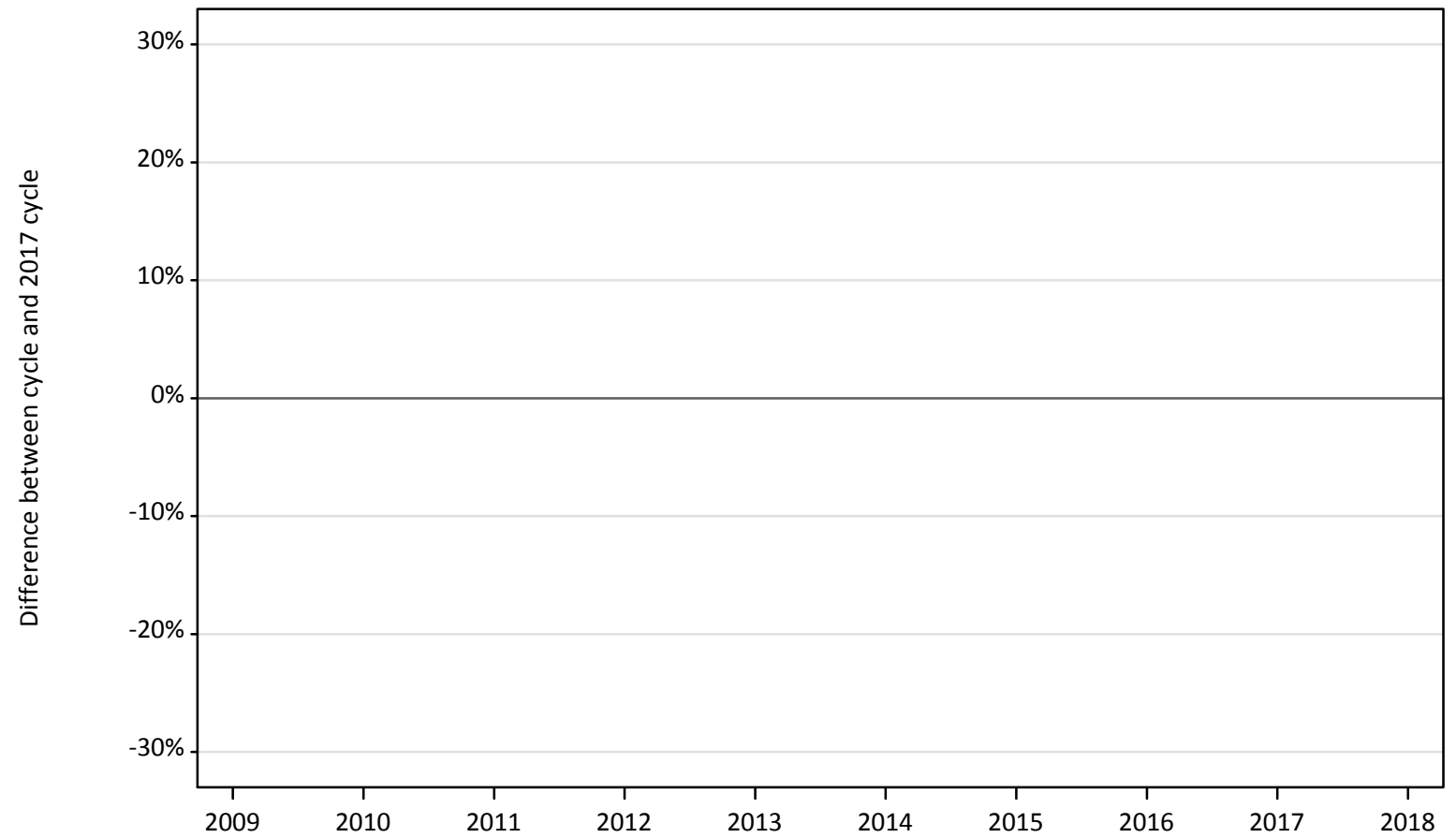
Applicant type	Status	2009	2010	2011	2012	2013	2014	2015	2016	2017	2018
Main scheme	Placed (Clearing)	-41%	-35%	-36%	-26%	-32%	-19%	-11%	-5%	0%	2%
	Placed (Firm)	-29%	-19%	-14%	-25%	-21%	-14%	-5%	3%	0%	1%
	Placed (Insurance)	-43%	-24%	-12%	-31%	-23%	-15%	-4%	1%	0%	1%
	Placed (Other)	55%	3%	5%	-22%	-12%	-13%	-12%	3%	0%	5%

Note: The percentage change is not recorded in the above table for groups with fewer than 10 placed applicants in that cycle or in the 2017 cycle.

A.9 Main scheme applicants placed through adjustment: 8 days after A level results day

Placed through adjustment: difference between cycle and 2017 cycle

Placed (Adjustment)



Note: The percentage change is not plotted in the above chart for groups with fewer than 30 placed applicants in any one cycle.

A.10 Main scheme applicants placed through adjustment: 8 days after A level results day

Placed through adjustment: applicants at 8 days after A level results day

Applicant type	Status	2009	2010	2011	2012	2013	2014	2015	2016	2017	2018
Main scheme	Placed (Adjustment)	10	10	10	40	40	40	40	40	40	30

A.11 Main scheme applicants placed through adjustment: 8 days after A level results day

Placed through adjustment: difference between cycle and 2017 cycle

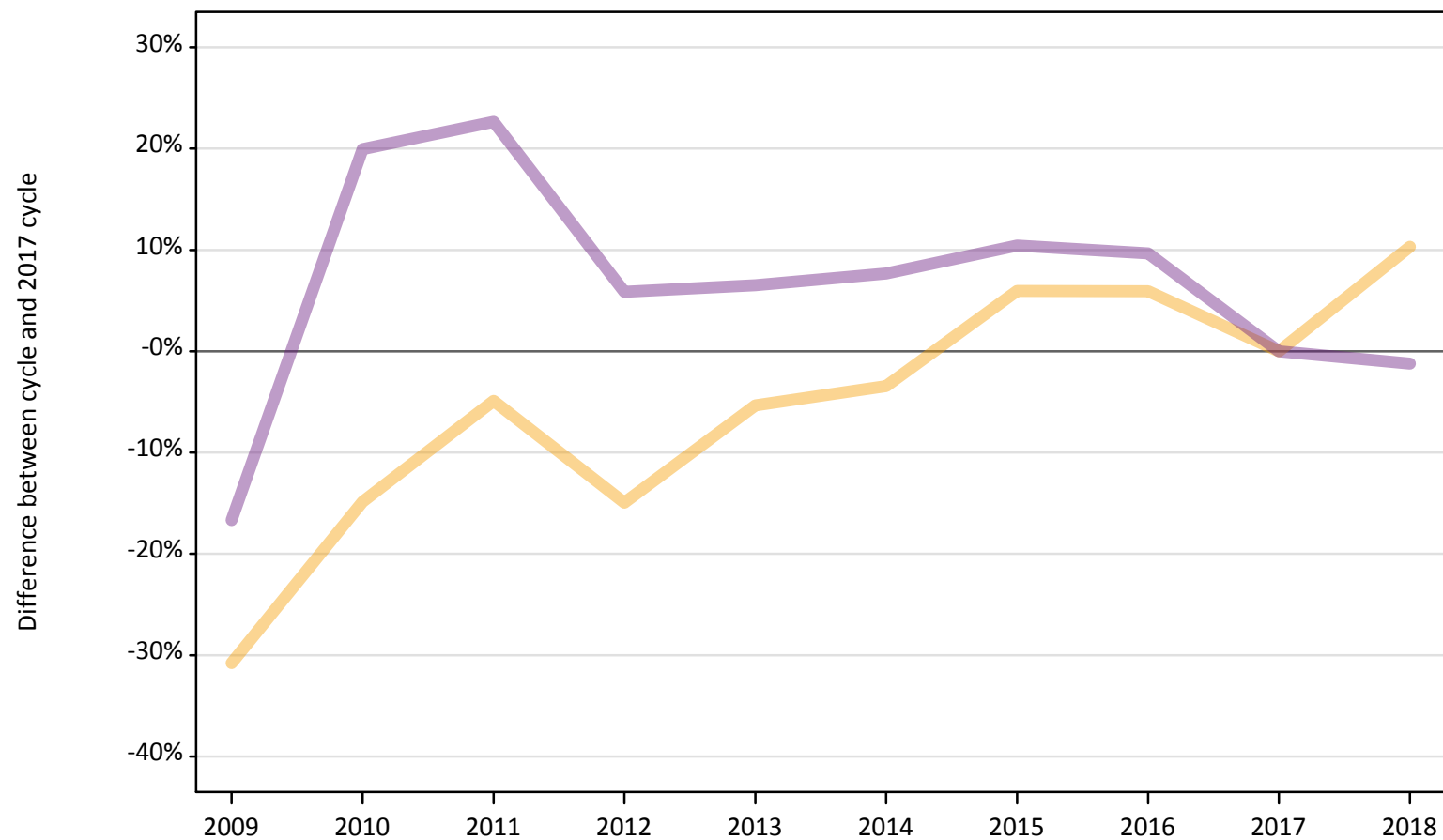
Applicant type	Status	2009	2010	2011	2012	2013	2014	2015	2016	2017	2018
Main scheme	Placed (Adjustment)	-71%	-69%	-71%	-14%	-12%	-14%	-7%	-10%	0%	-36%

Note: The percentage change is not recorded in the above table for groups with fewer than 10 placed applicants in that cycle or in the 2017 cycle.

A.12 Main scheme applicants not currently placed from the EU - excluding UK: 8 days after A level results day

Applicants in unplaced states: difference between cycle and 2017 cycle

— Holding offer
— Free to be placed in Clearing



Note: The percentage change is not plotted in the above chart for groups with fewer than 30 unplaced applicants in any one cycle.

A.13 Main scheme applicants not currently placed from the EU - excluding UK: 8 days after A level results day

Applicants in unplaced states: applicants at 8 days after A level results day

Applicant type	Status	2009	2010	2011	2012	2013	2014	2015	2016	2017	2018
Main scheme	Holding offer	4,280	5,260	5,880	5,260	5,850	5,970	6,550	6,550	6,180	6,820
	Free to be placed in Clearing	11,010	15,840	16,200	13,980	14,070	14,220	14,590	14,480	13,210	13,050

A.14 Main scheme applicants not currently placed from the EU - excluding UK: 8 days after A level results day

Applicants in unplaced states: difference between cycle and 2017 cycle

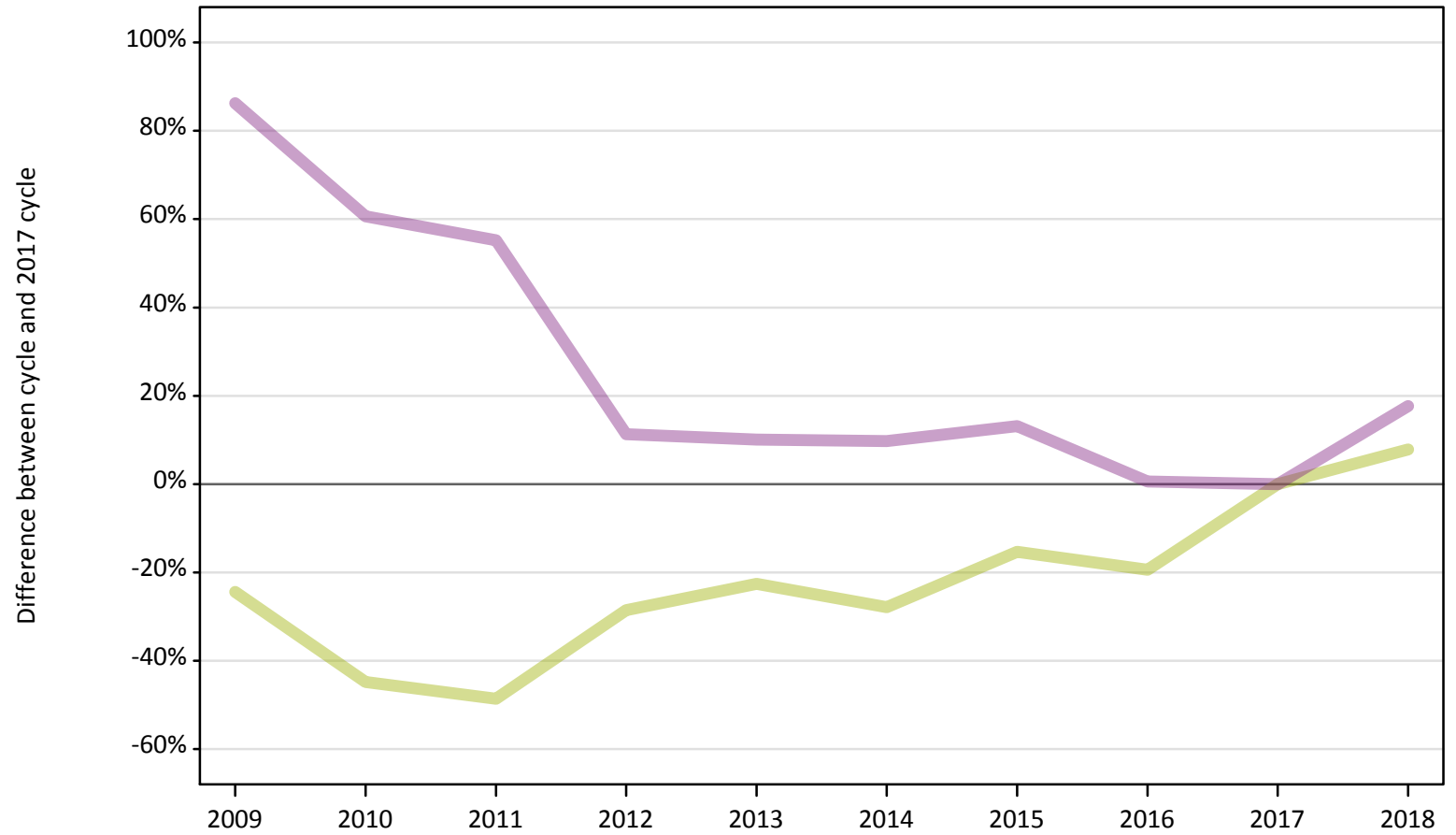
Applicant type	Status	2009	2010	2011	2012	2013	2014	2015	2016	2017	2018
Main scheme	Holding offer	-31%	-15%	-5%	-15%	-5%	-3%	6%	6%	0%	10%
	Free to be placed in Clearing	-17%	20%	23%	6%	7%	8%	10%	10%	0%	-1%

Note: The percentage change is not recorded in the above table for groups with fewer than 10 unplaced applicants in that cycle or in the 2017 cycle.

A.15 Direct to Clearing applicants from the EU - excluding UK: 8 days after A level results day

Direct to Clearing: difference between cycle and 2017 cycle

- Placed (Direct to Clearing)
- Other (Direct to Clearing)



Note: The percentage change is not plotted in the above chart for groups with fewer than 30 placed applicants in any one cycle.

A.16 Direct to Clearing applicants from the EU - excluding UK: 8 days after A level results day

Direct to Clearing 8 days after A level results day

Applicant type	Status	2009	2010	2011	2012	2013	2014	2015	2016	2017	2018
Direct to Clearing	Placed (Direct to Clearing)	240	180	160	230	250	230	270	260	320	340
	Other (Direct to Clearing)	610	530	510	370	360	360	370	330	330	390

A.17 Direct to Clearing applicants from the EU - excluding UK: 8 days after A level results day

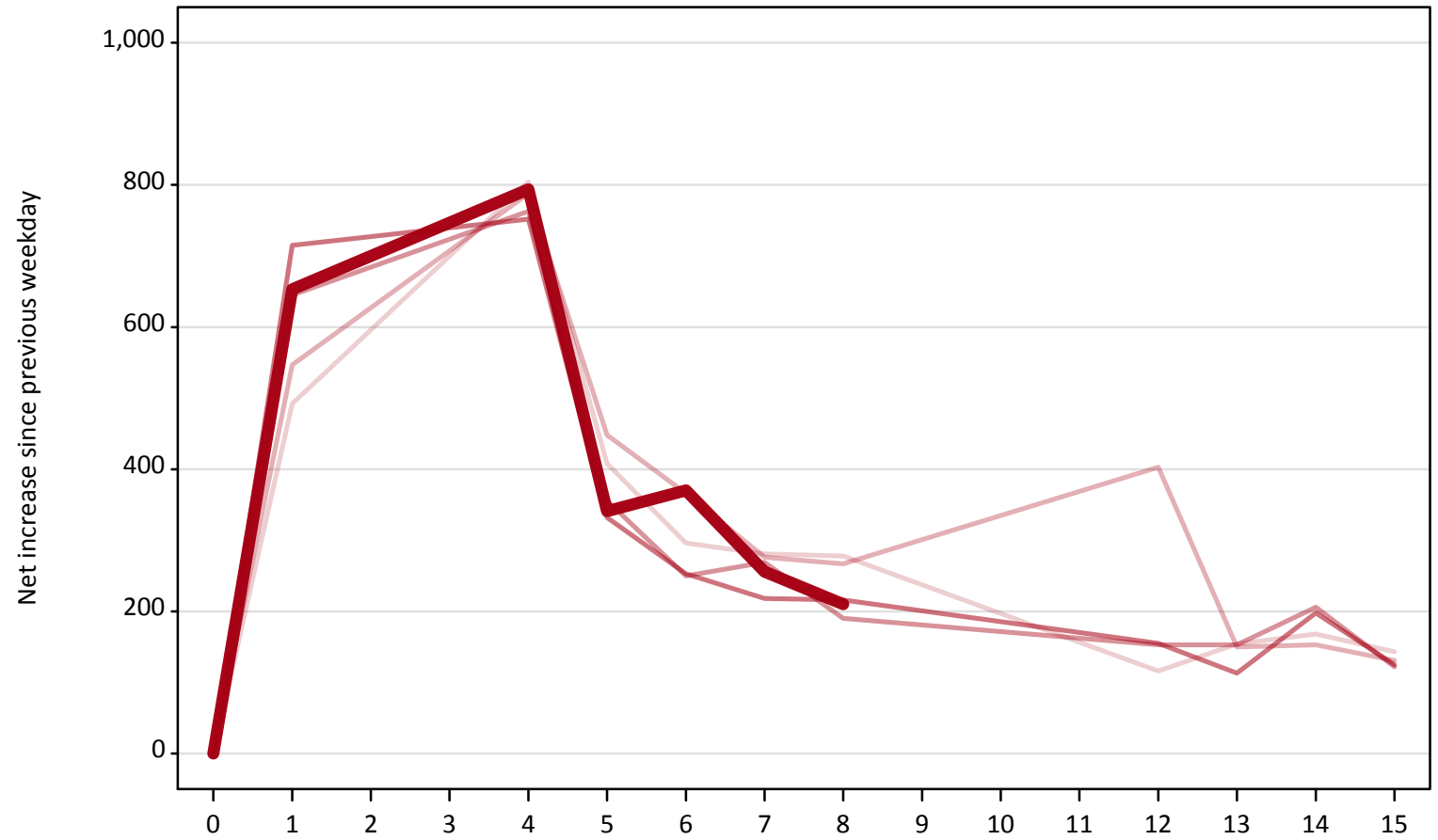
Direct to Clearing: difference between cycle and 2017 cycle

Applicant type	Status	2009	2010	2011	2012	2013	2014	2015	2016	2017	2018
Direct to Clearing	Placed (Direct to Clearing)	-24%	-45%	-49%	-29%	-23%	-28%	-15%	-19%	0%	8%
	Other (Direct to Clearing)	86%	61%	55%	11%	10%	10%	13%	1%	0%	18%

Note: The percentage change is not recorded in the above table for groups with fewer than 10 placed applicants in that cycle or in the 2017 cycle.

A.18 All Placed: Daily net change (from the EU - excluding UK)
Net increase since previous weekday (2018 cycle up to 8 days after A level results day)

- 2014
- 2015
- 2016
- 2017
- 2018**

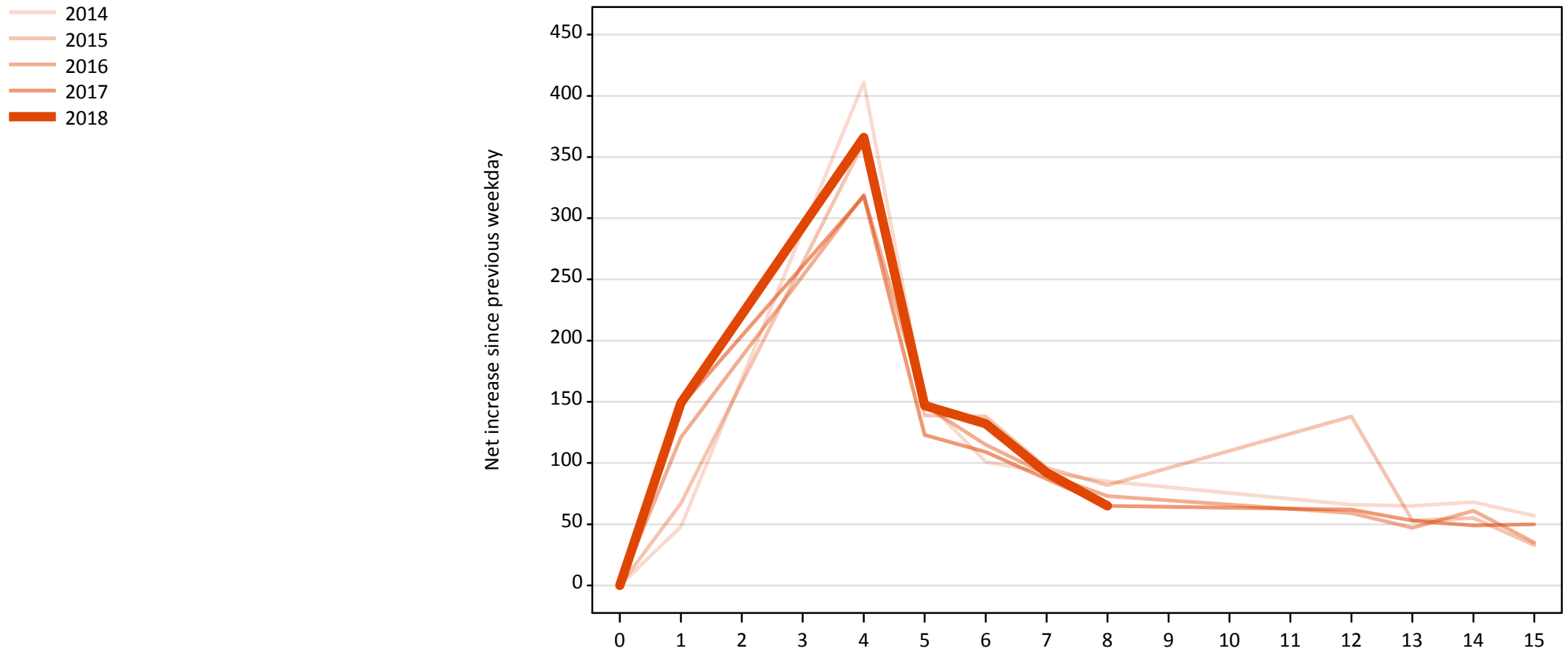


A.19 All Placed: Daily net change (from the EU - excluding UK)

Net increase since previous weekday (2018 cycle up to 8 days after A level results day)

Applicant status, days since A level results day		2014	2015	2016	2017	2018
All Placed	0	0	0	0	0	0
	1	490	550	650	720	650
	4	800	790	760	750	790
	5	410	450	360	330	340
	6	300	370	250	250	370
	7	280	280	270	220	260
	8	280	270	190	220	210
	12	120	400	150	160	
	13	150	150	150	110	
	14	170	150	210	200	
	15	140	130	120	130	

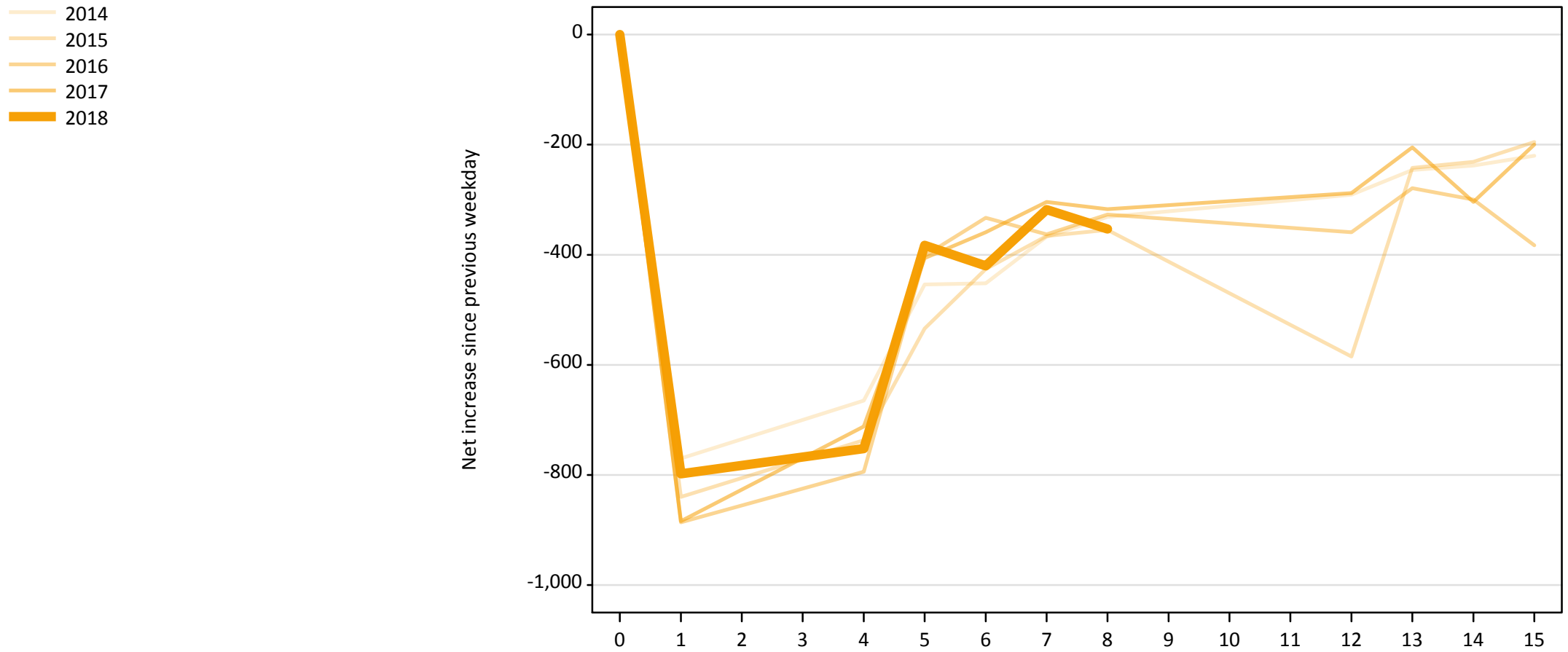
A.20 Placed through Clearing only: Daily net change (from the EU - excluding UK)
Net increase since previous weekday (2018 cycle up to 8 days after A level results day)



A.21 Placed through Clearing only: Daily net change (from the EU - excluding UK)
 Net increase since previous weekday (2018 cycle up to 8 days after A level results day)

Applicant status, days since A level results day		2014	2015	2016	2017	2018
Placed through Clearing only	0	0	0	0	0	0
	1	50	70	120	150	150
	4	410	360	320	320	370
	5	150	140	150	120	150
	6	100	140	120	110	130
	7	90	100	90	90	90
	8	90	80	70	70	70
	12	70	140	60	60	
	13	70	50	50	50	
	14	70	60	60	50	
	15	60	30	40	50	

A.22 Holding Offer: Daily net change (from the EU - excluding UK)
Net increase since previous weekday (2018 cycle up to 8 days after A level results day)



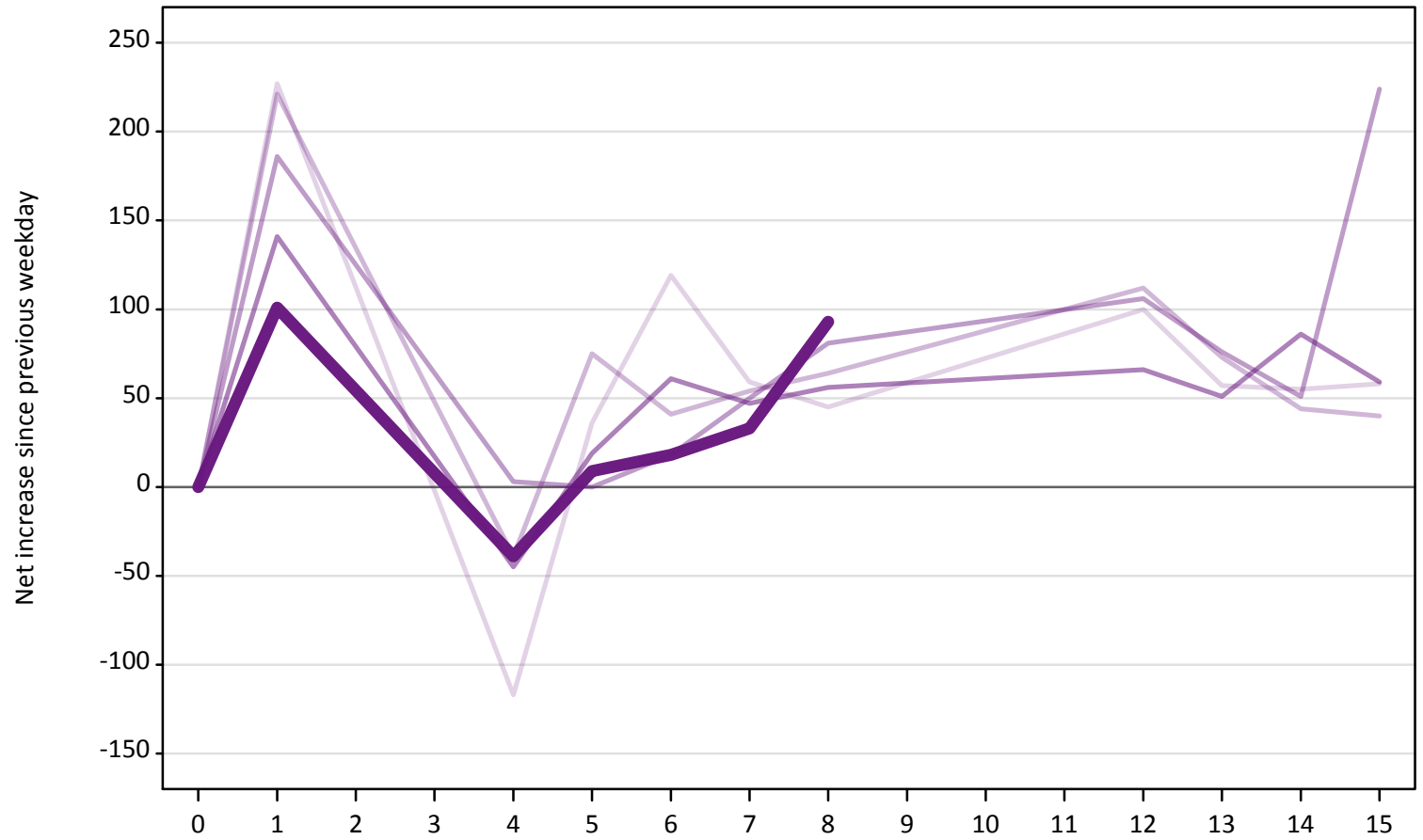
A.23 Holding Offer: Daily net change (from the EU - excluding UK)

Net increase since previous weekday (2018 cycle up to 8 days after A level results day)

Applicant status, days since A level results day	2014	2015	2016	2017	2018	
Holding Offer	0	0	0	0	0	
	1	-770	-840	-890	-880	-800
	4	-670	-740	-790	-710	-750
	5	-450	-530	-400	-410	-380
	6	-450	-430	-330	-360	-420
	7	-370	-370	-360	-300	-320
	8	-330	-360	-330	-320	-350
	12	-290	-590	-360	-290	
	13	-250	-240	-280	-210	
	14	-240	-230	-300	-300	
	15	-220	-200	-380	-200	

A.24 Free to be placed in Clearing: Daily net change (from the EU - excluding UK)
Net increase since previous weekday (2018 cycle up to 8 days after A level results day)

- 2014
- 2015
- 2016
- 2017
- 2018**



A.25 Free to be placed in Clearing: Daily net change (from the EU - excluding UK)
 Net increase since previous weekday (2018 cycle up to 8 days after A level results day)

Applicant status, days since A level results day		2014	2015	2016	2017	2018
Free to be placed in Clearing	0	0	0	0	0	0
	1	230	220	190	140	100
	4	-120	-40	0	-50	-40
	5	40	80	0	20	10
	6	120	40	20	60	20
	7	60	50	50	50	30
	8	50	60	80	60	90
	12	100	110	110	70	
	13	60	70	80	50	
	14	60	40	50	90	
	15	60	40	220	60	