

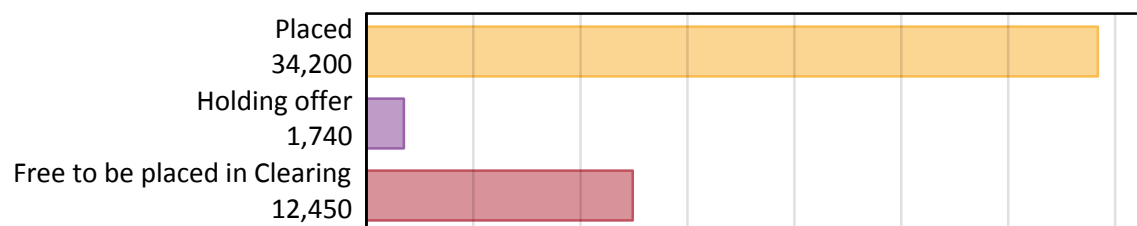
Daily Clearing Analysis: Overview

Analysis at 00:05 on Friday 24 August 2018 (8 days after A level results day)

A.1 Applicants by type and status from Scotland, 2018 cycle

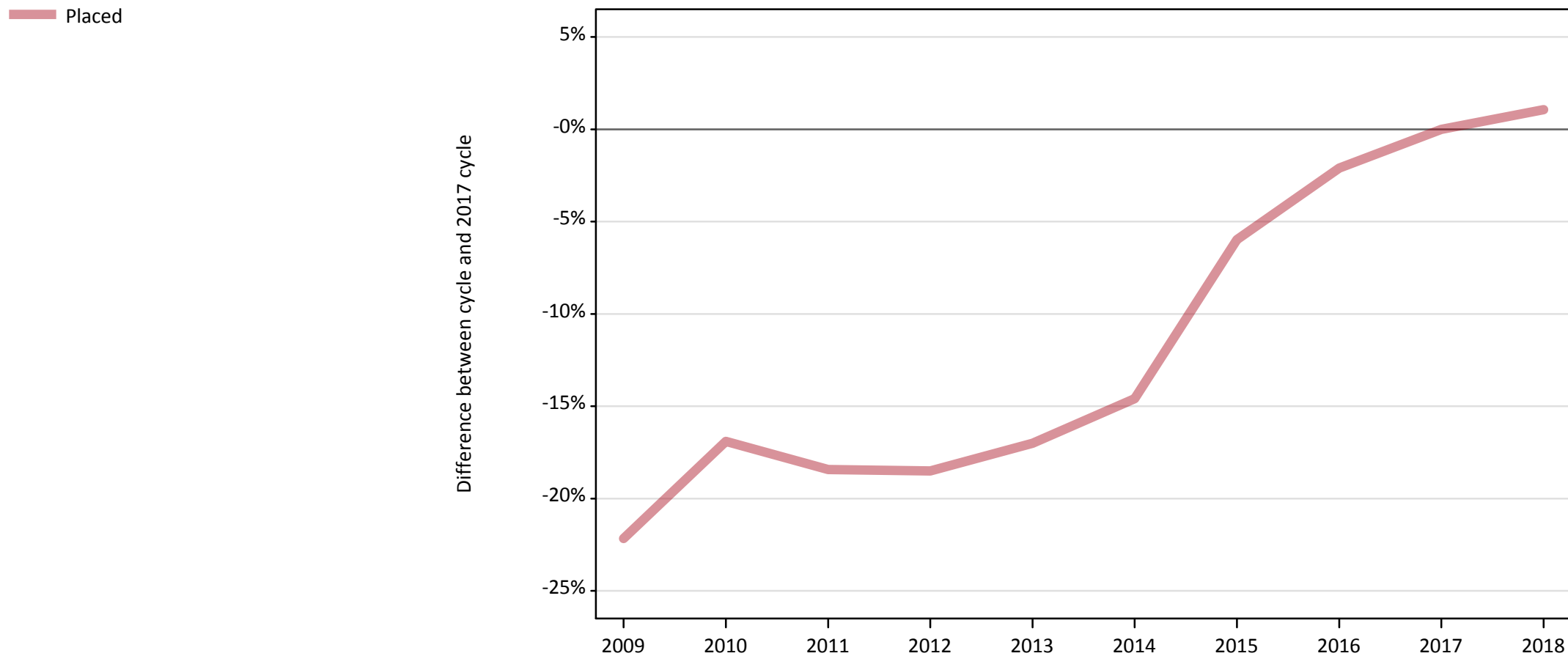
Applicant type	Status	2018
Main scheme	Placed (Clearing)	990
	Placed (Adjustment)	10
	Placed (Firm)	30,940
	Placed (Insurance)	1,310
	Placed (Other)	650
	Holding offer	1,740
	Free to be placed in Clearing	12,450
Direct to Clearing	Placed (Direct to Clearing)	310
	Other (Direct to Clearing)	350
All applicants	Placed	34,200

A.2 Summary of applicants who are placed, holding offers or free to be placed in Clearing (Scotland)



A.3 All placed applicants from Scotland: 8 days after A level results day

All placed applicants: difference between cycle and 2017 cycle



Note: The percentage change is not plotted in the above chart for groups with fewer than 30 placed applicants in any one cycle.

A.4 All placed applicants from Scotland: 8 days after A level results day

All placed applicants: applicants at 8 days after A level results day

Applicant type	Status	2009	2010	2011	2012	2013	2014	2015	2016	2017	2018
All applicants	Placed	26,340	28,130	27,610	27,580	28,090	28,910	31,830	33,140	33,850	34,200

A.5 All placed applicants from Scotland: 8 days after A level results day

All placed applicants: difference between cycle and 2017 cycle

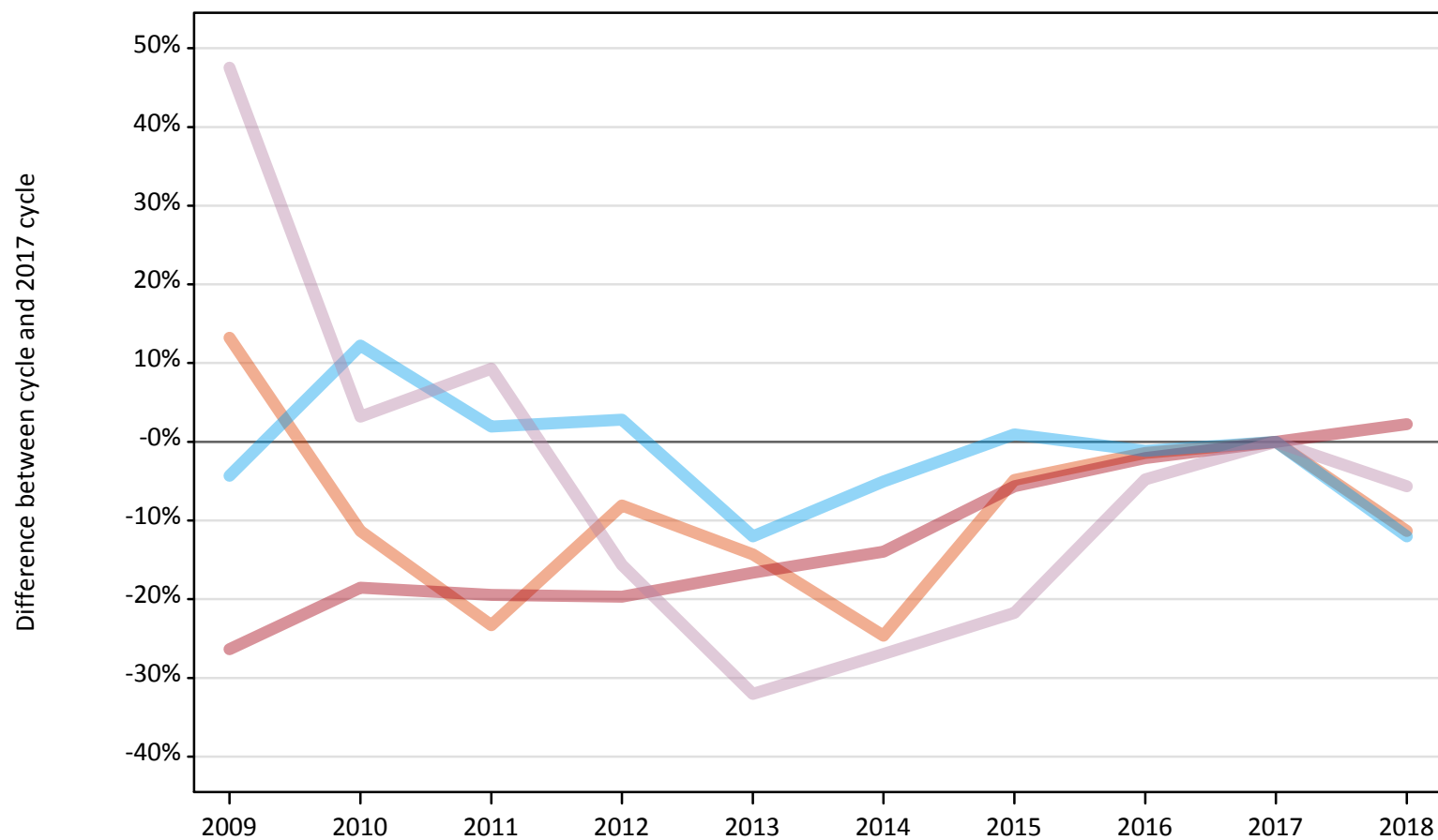
Applicant type	Status	2009	2010	2011	2012	2013	2014	2015	2016	2017	2018
All applicants	Placed	-22%	-17%	-18%	-19%	-17%	-15%	-6%	-2%	0%	1%

Note: The percentage change is not recorded in the above table for groups with fewer than 10 placed applicants in that cycle or in the 2017 cycle.

A.6 Placed main scheme applicants from Scotland: 8 days after A level results day

All Main scheme placed routes (excluding Adjustment): difference between cycle and 2017 cycle

- Placed (Clearing)
- Placed (Firm)
- Placed (Insurance)
- Placed (Other)



Note: The percentage change is not plotted in the above chart for groups with fewer than 30 placed applicants in any one cycle.

A.7 Placed main scheme applicants from Scotland: 8 days after A level results day

All Main scheme placed routes (excluding Adjustment): applicants at 8 days after A level results day

Applicant type	Status	2009	2010	2011	2012	2013	2014	2015	2016	2017	2018
Main scheme	Placed (Clearing)	1,260	990	850	1,020	950	840	1,060	1,100	1,110	990
	Placed (Firm)	22,290	24,660	24,380	24,310	25,230	26,040	28,550	29,650	30,270	30,940
	Placed (Insurance)	1,420	1,670	1,520	1,530	1,310	1,410	1,500	1,470	1,490	1,310
	Placed (Other)	1,020	710	750	580	470	500	540	660	690	650

A.8 Placed main scheme applicants from Scotland: 8 days after A level results day

All Main scheme placed routes (excluding Adjustment): difference between cycle and 2017 cycle

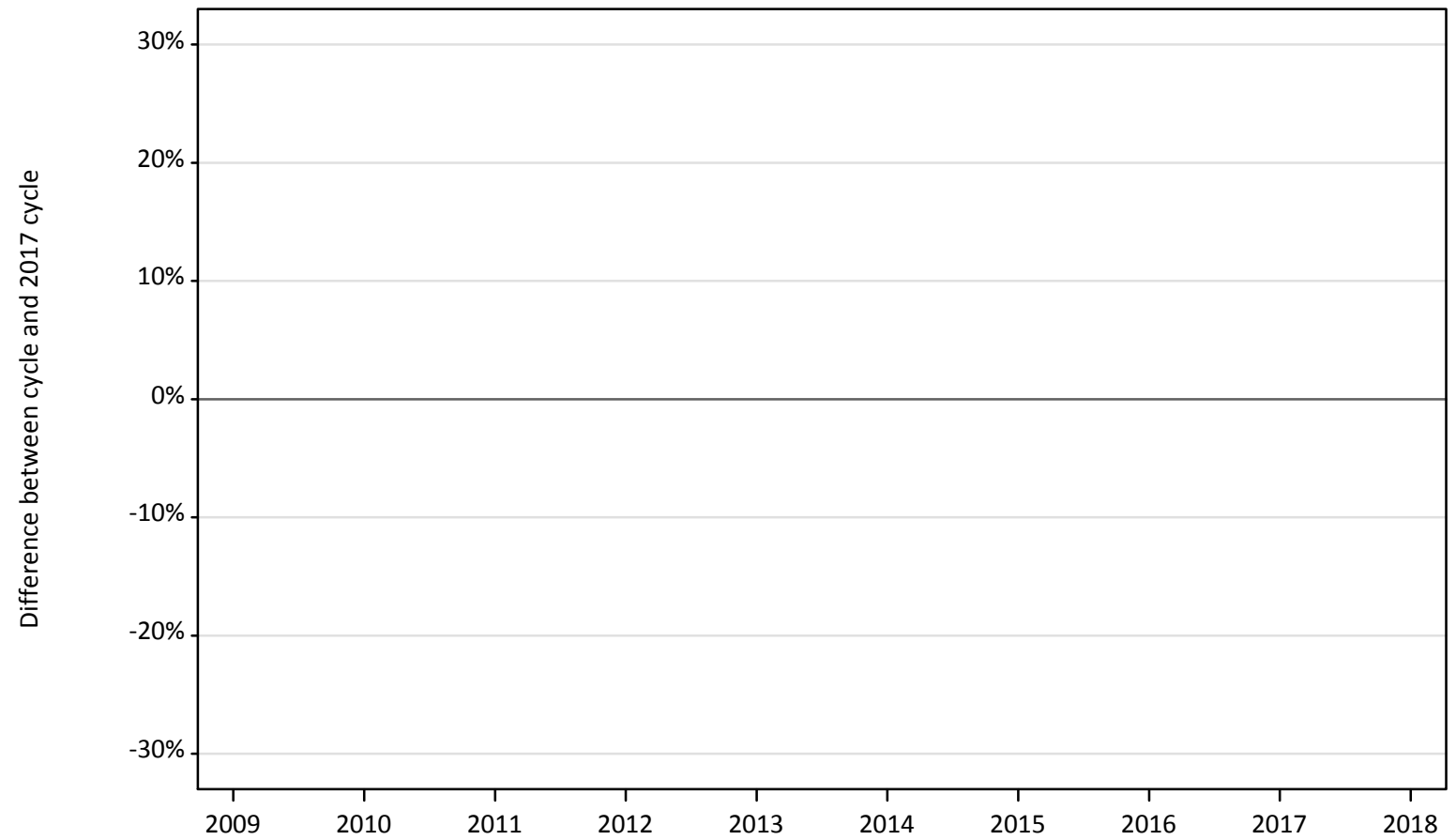
Applicant type	Status	2009	2010	2011	2012	2013	2014	2015	2016	2017	2018
Main scheme	Placed (Clearing)	13%	-11%	-23%	-8%	-14%	-25%	-5%	-1%	0%	-11%
	Placed (Firm)	-26%	-19%	-19%	-20%	-17%	-14%	-6%	-2%	0%	2%
	Placed (Insurance)	-4%	12%	2%	3%	-12%	-5%	1%	-1%	0%	-12%
	Placed (Other)	48%	3%	9%	-16%	-32%	-27%	-22%	-5%	0%	-6%

Note: The percentage change is not recorded in the above table for groups with fewer than 10 placed applicants in that cycle or in the 2017 cycle.

A.9 Main scheme applicants placed through adjustment: 8 days after A level results day

Placed through adjustment: difference between cycle and 2017 cycle

Placed (Adjustment)



Note: The percentage change is not plotted in the above chart for groups with fewer than 30 placed applicants in any one cycle.

A.10 Main scheme applicants placed through adjustment: 8 days after A level results day

Placed through adjustment: applicants at 8 days after A level results day

Applicant type	Status	2009	2010	2011	2012	2013	2014	2015	2016	2017	2018
Main scheme	Placed (Adjustment)	10	0	10	20	10	10	10	10	0	10

A.11 Main scheme applicants placed through adjustment: 8 days after A level results day

Placed through adjustment: difference between cycle and 2017 cycle

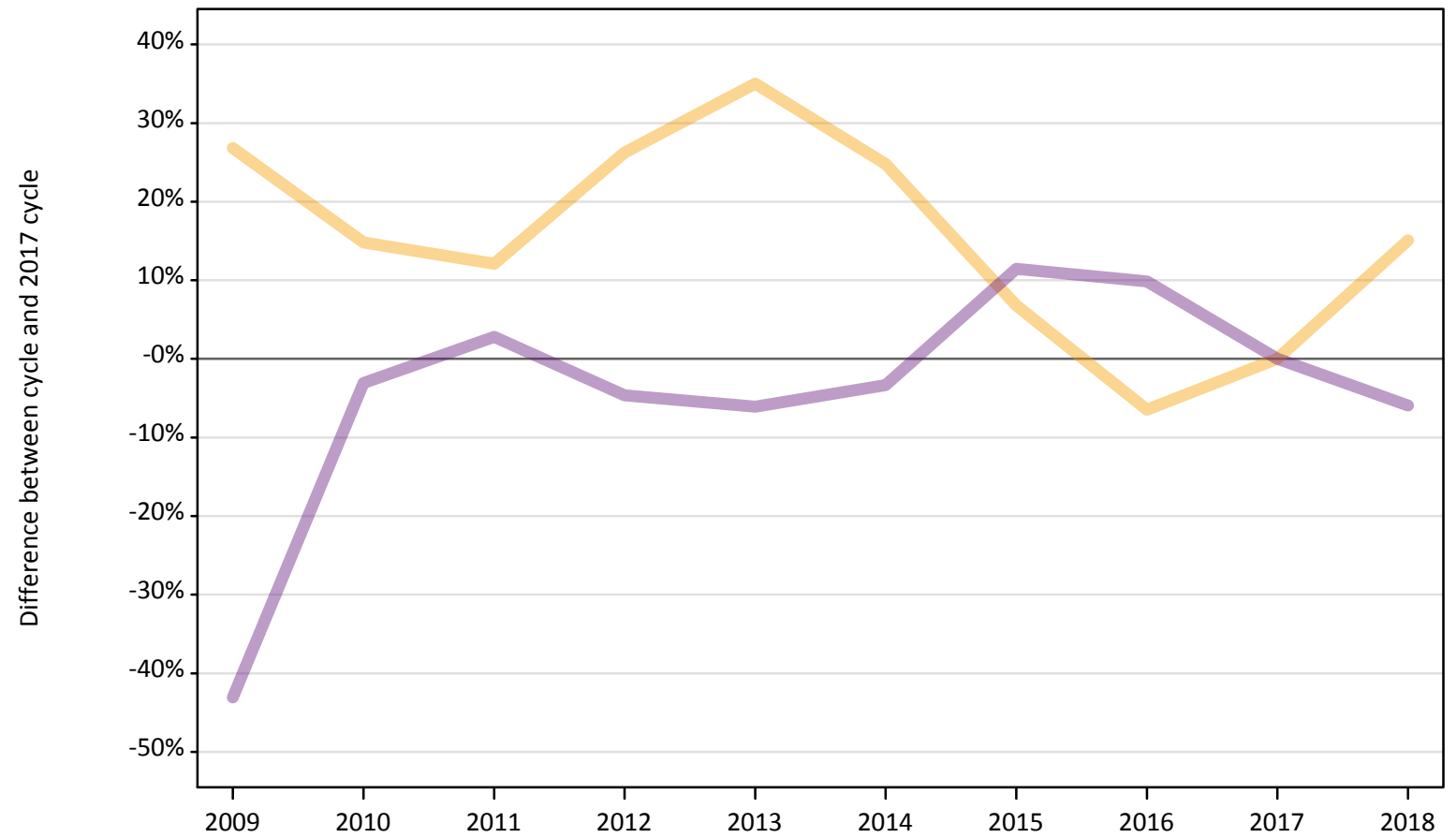
Applicant type	Status	2009	2010	2011	2012	2013	2014	2015	2016	2017	2018
Main scheme	Placed (Adjustment)										

Note: The percentage change is not recorded in the above table for groups with fewer than 10 placed applicants in that cycle or in the 2017 cycle.

A.12 Main scheme applicants not currently placed from Scotland: 8 days after A level results day

Applicants in unplaced states: difference between cycle and 2017 cycle

— Holding offer
— Free to be placed in Clearing



Note: The percentage change is not plotted in the above chart for groups with fewer than 30 unplaced applicants in any one cycle.

A.13 Main scheme applicants not currently placed from Scotland: 8 days after A level results day

Applicants in unplaced states: applicants at 8 days after A level results day

Applicant type	Status	2009	2010	2011	2012	2013	2014	2015	2016	2017	2018
Main scheme	Holding offer	1,920	1,740	1,700	1,910	2,040	1,890	1,620	1,420	1,510	1,740
	Free to be placed in Clearing	7,540	12,830	13,610	12,620	12,430	12,790	14,750	14,540	13,240	12,450

A.14 Main scheme applicants not currently placed from Scotland: 8 days after A level results day

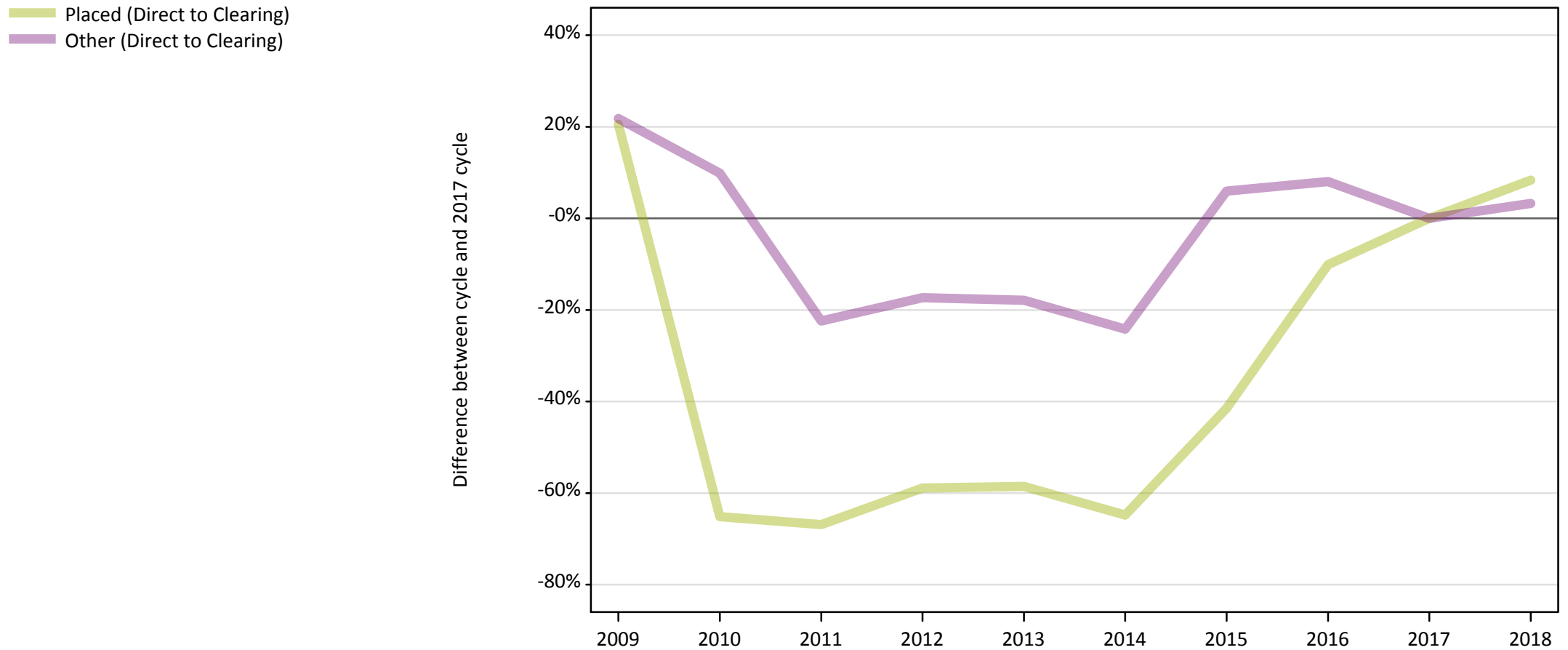
Applicants in unplaced states: difference between cycle and 2017 cycle

Applicant type	Status	2009	2010	2011	2012	2013	2014	2015	2016	2017	2018
Main scheme	Holding offer	27%	15%	12%	26%	35%	25%	7%	-6%	0%	15%
	Free to be placed in Clearing	-43%	-3%	3%	-5%	-6%	-3%	11%	10%	0%	-6%

Note: The percentage change is not recorded in the above table for groups with fewer than 10 unplaced applicants in that cycle or in the 2017 cycle.

A.15 Direct to Clearing applicants from Scotland: 8 days after A level results day

Direct to Clearing: difference between cycle and 2017 cycle



Note: The percentage change is not plotted in the above chart for groups with fewer than 30 placed applicants in any one cycle.

A.16 Direct to Clearing applicants from Scotland: 8 days after A level results day

Direct to Clearing 8 days after A level results day

Applicant type	Status	2009	2010	2011	2012	2013	2014	2015	2016	2017	2018
Direct to Clearing	Placed (Direct to Clearing)	350	100	100	120	120	100	170	260	290	310
	Other (Direct to Clearing)	410	370	260	280	280	250	360	360	340	350

A.17 Direct to Clearing applicants from Scotland: 8 days after A level results day

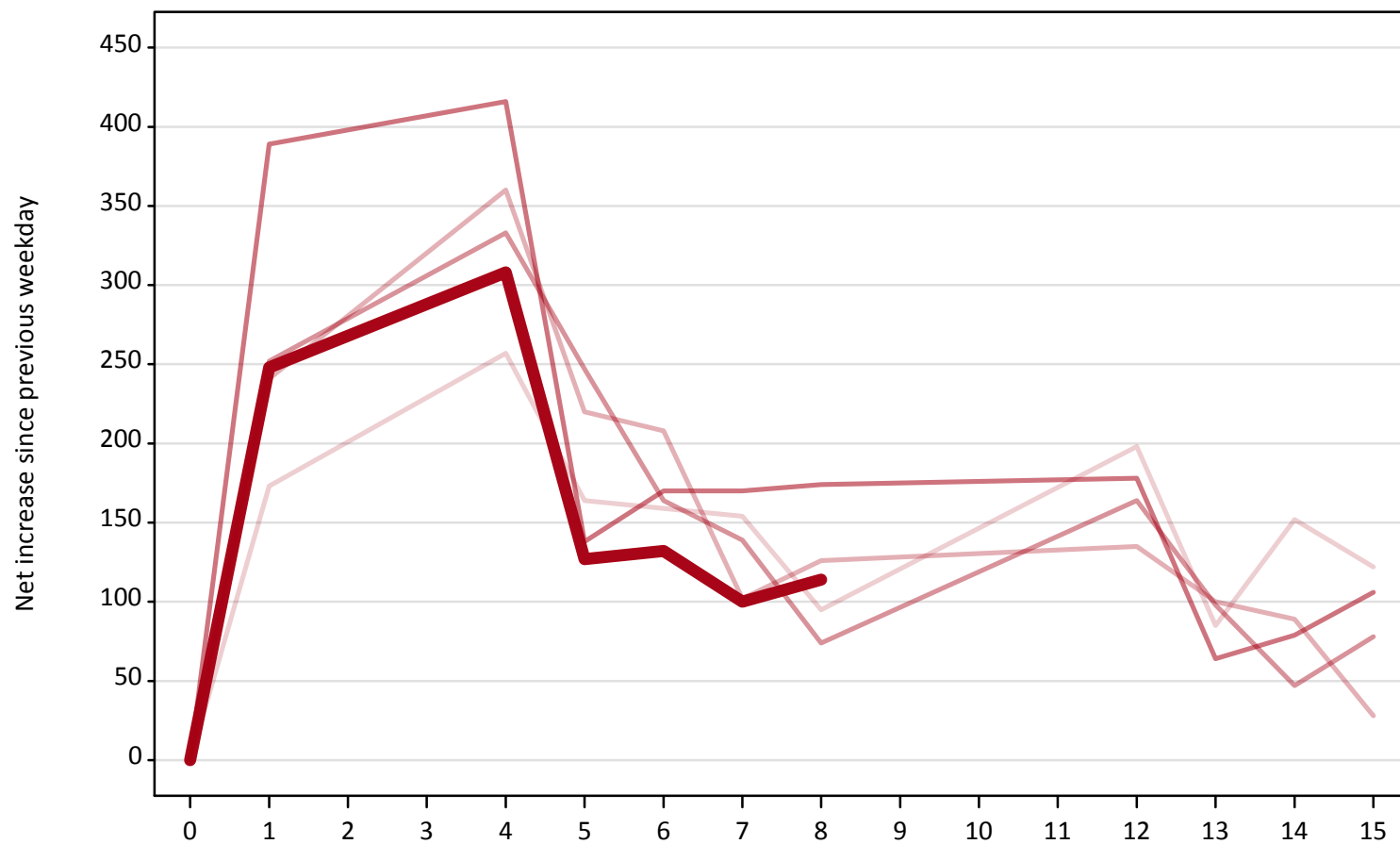
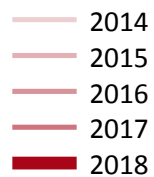
Direct to Clearing: difference between cycle and 2017 cycle

Applicant type	Status	2009	2010	2011	2012	2013	2014	2015	2016	2017	2018
Direct to Clearing	Placed (Direct to Clearing)	21%	-65%	-67%	-59%	-59%	-65%	-41%	-10%	0%	8%
	Other (Direct to Clearing)	22%	10%	-22%	-17%	-18%	-24%	6%	8%	0%	3%

Note: The percentage change is not recorded in the above table for groups with fewer than 10 placed applicants in that cycle or in the 2017 cycle.

A.18 All Placed: Daily net change (from Scotland)

Net increase since previous weekday (2018 cycle up to 8 days after A level results day)

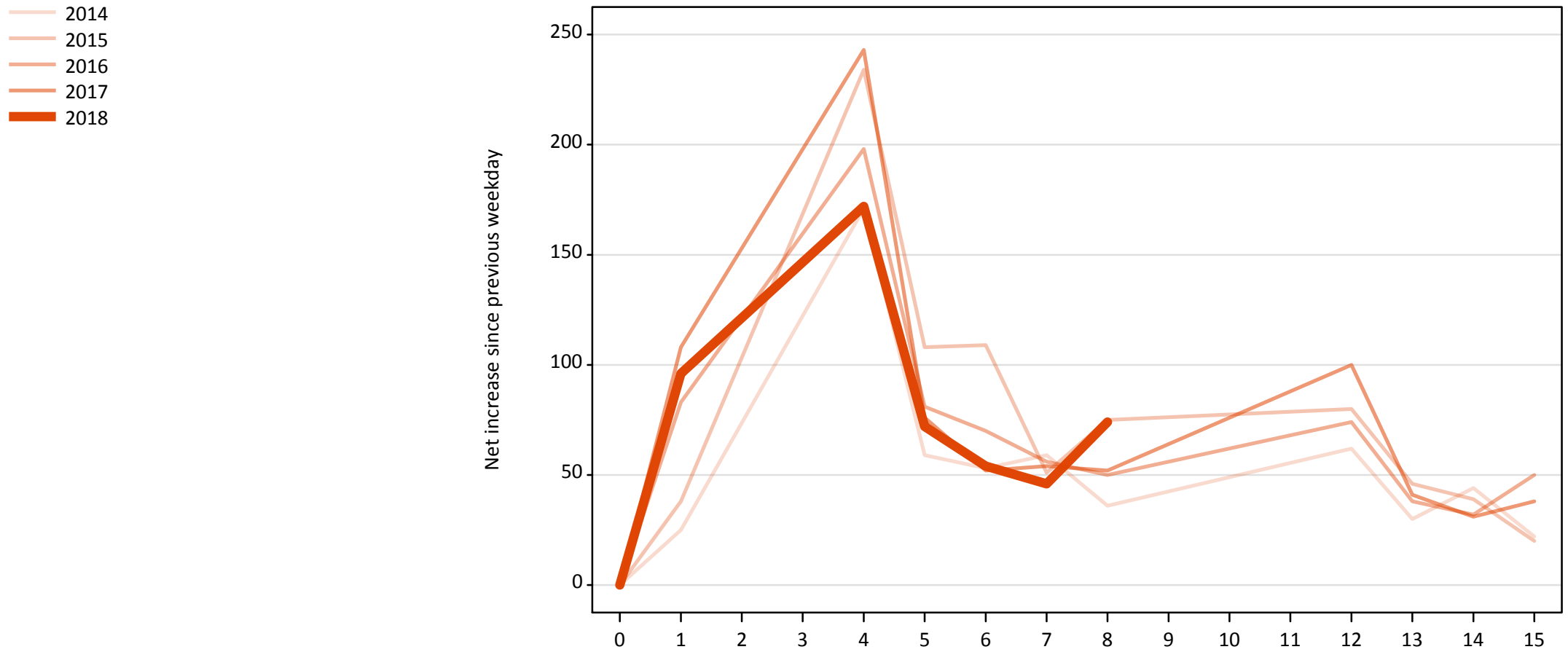


A.19 All Placed: Daily net change (from Scotland)

Net increase since previous weekday (2018 cycle up to 8 days after A level results day)

Applicant status, days since A level results day		2014	2015	2016	2017	2018
All Placed	0	0	0	0	0	0
	1	170	240	250	390	250
	4	260	360	330	420	310
	5	160	220	250	140	130
	6	160	210	160	170	130
	7	150	100	140	170	100
	8	100	130	70	170	110
	12	200	140	160	180	
	13	90	100	100	60	
	14	150	90	50	80	
	15	120	30	80	110	

A.20 Placed through Clearing only: Daily net change (from Scotland)
Net increase since previous weekday (2018 cycle up to 8 days after A level results day)



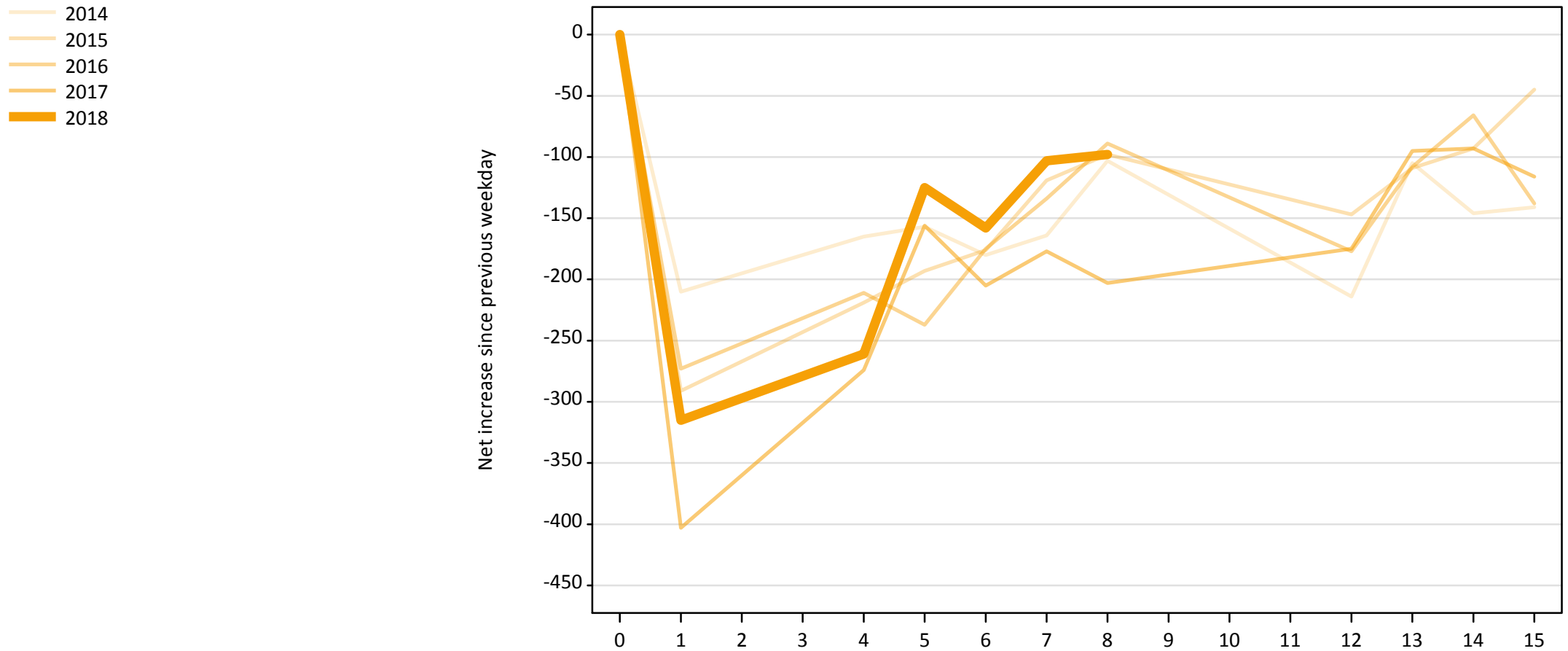
A.21 Placed through Clearing only: Daily net change (from Scotland)

Net increase since previous weekday (2018 cycle up to 8 days after A level results day)

Applicant status, days since A level results day		2014	2015	2016	2017	2018
Placed through Clearing only	0	0	0	0	0	0
	1	30	40	80	110	100
	4	170	230	200	240	170
	5	60	110	80	80	70
	6	50	110	70	50	50
	7	60	50	60	50	50
	8	40	80	50	50	70
	12	60	80	70	100	
	13	30	50	40	40	
	14	40	40	30	30	
	15	20	20	50	40	

A.22 Holding Offer: Daily net change (from Scotland)

Net increase since previous weekday (2018 cycle up to 8 days after A level results day)



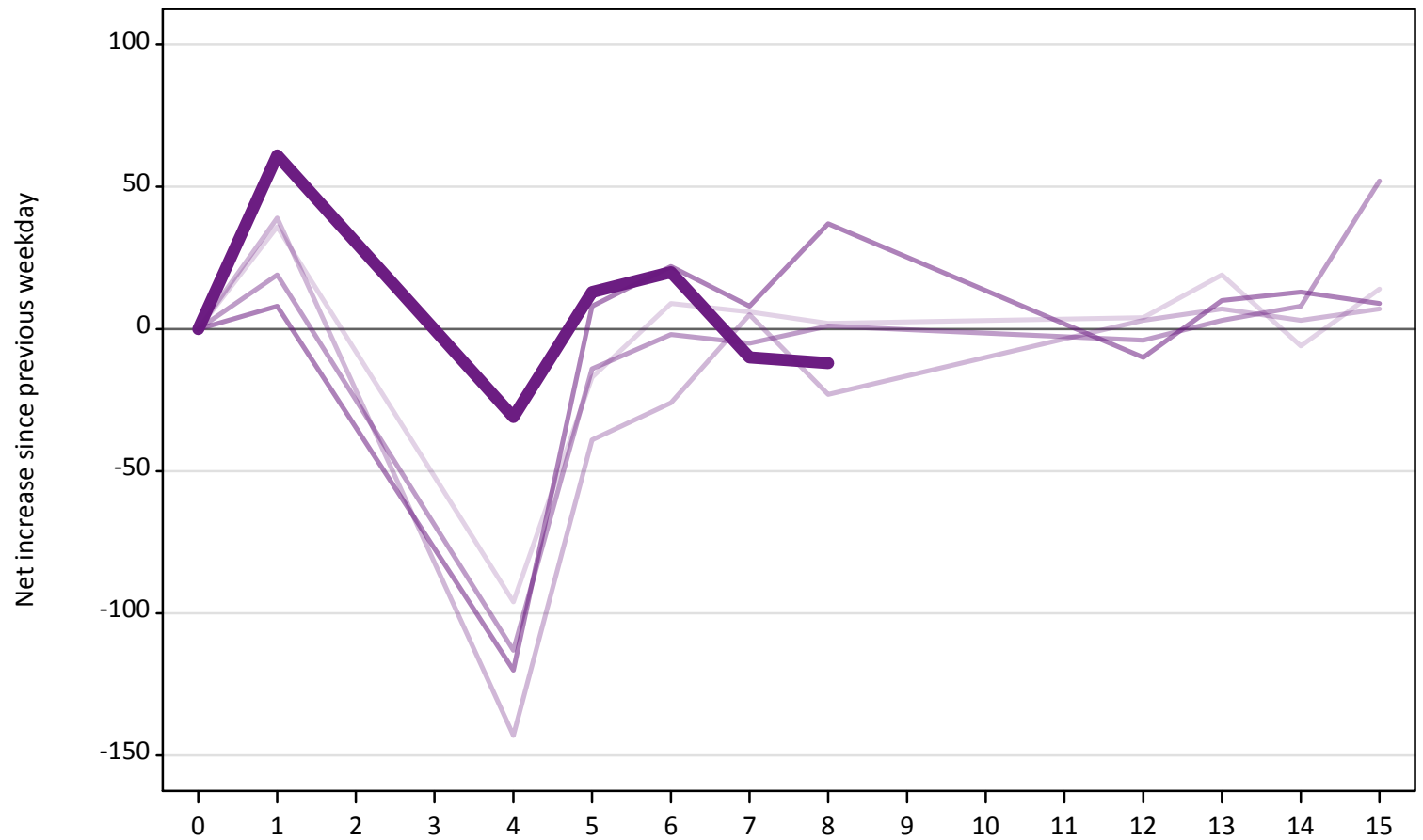
A.23 Holding Offer: Daily net change (from Scotland)

Net increase since previous weekday (2018 cycle up to 8 days after A level results day)

Applicant status, days since A level results day		2014	2015	2016	2017	2018
Holding Offer	0	0	0	0	0	0
	1	-210	-290	-270	-400	-320
	4	-170	-220	-210	-270	-260
	5	-160	-190	-240	-160	-130
	6	-180	-180	-180	-210	-160
	7	-160	-120	-130	-180	-100
	8	-100	-100	-90	-200	-100
	12	-210	-150	-180	-180	
	13	-110	-110	-110	-100	
	14	-150	-90	-70	-90	
	15	-140	-50	-140	-120	

A.24 Free to be placed in Clearing: Daily net change (from Scotland)
Net increase since previous weekday (2018 cycle up to 8 days after A level results day)

- 2014
- 2015
- 2016
- 2017
- 2018



A.25 Free to be placed in Clearing: Daily net change (from Scotland)

Net increase since previous weekday (2018 cycle up to 8 days after A level results day)

Applicant status, days since A level results day		2014	2015	2016	2017	2018
Free to be placed in Clearing	0	0	0	0	0	0
	1	40	40	20	10	60
	4	-100	-140	-110	-120	-30
	5	-20	-40	-10	10	10
	6	10	-30	0	20	20
	7	10	10	-10	10	-10
	8	0	-20	0	40	-10
	12	0	0	0	-10	
	13	20	10	0	10	
	14	-10	0	10	10	
	15	10	10	50	10	