

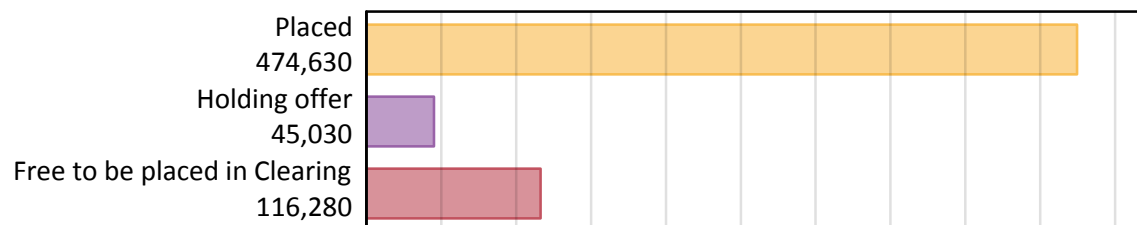
# Daily Clearing Analysis: Overview

Analysis at 00:05 on Friday 24 August 2018 (8 days after A level results day)

## A.1 Applicants by type and status from all domiciles, 2018 cycle

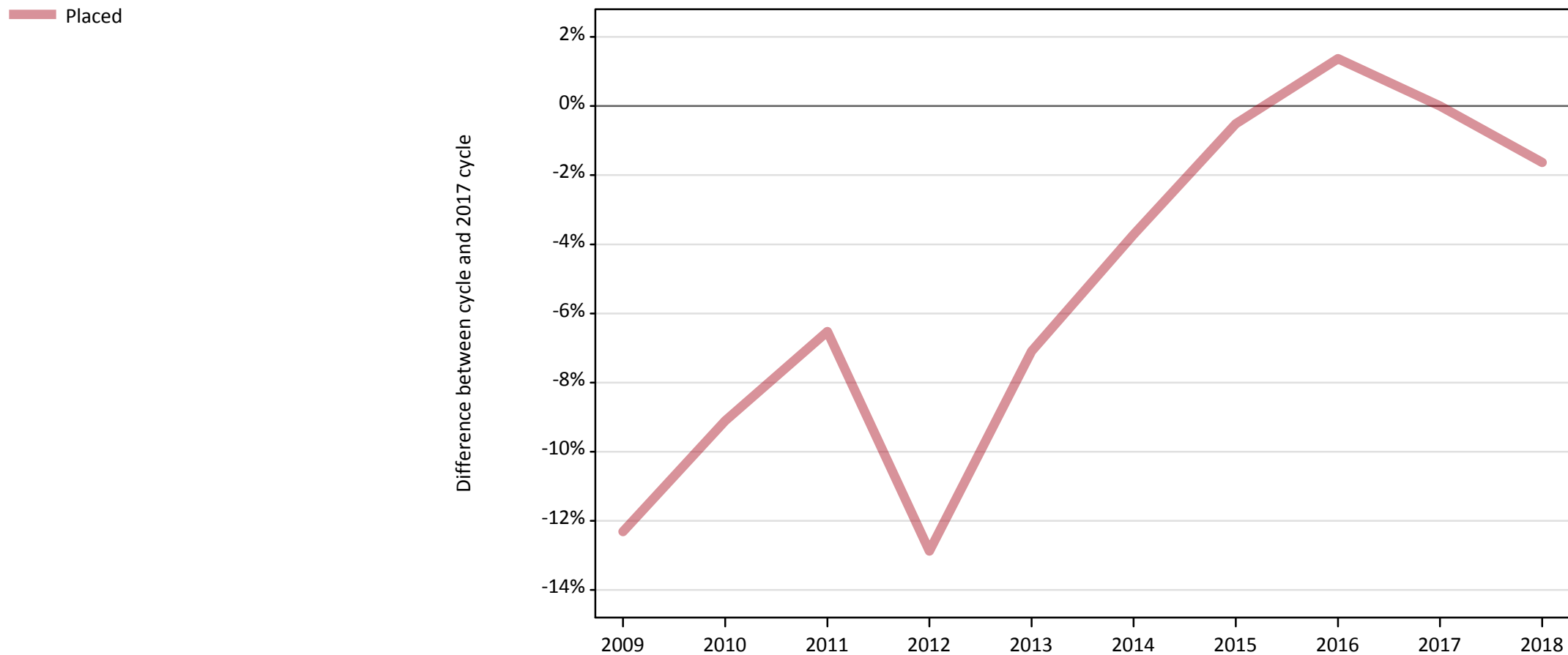
Applicant type	Status	2018
Main scheme	Placed (Clearing)	38,230
	Placed (Adjustment)	910
	Placed (Firm)	379,070
	Placed (Insurance)	33,660
	Placed (Other)	13,610
	Holding offer	45,030
	Free to be placed in Clearing	116,280
Direct to Clearing	Placed (Direct to Clearing)	9,160
	Other (Direct to Clearing)	7,660
All applicants	Placed	474,630

## A.2 Summary of applicants who are placed, holding offers or free to be placed in Clearing ( all domiciles )



### A.3 All placed applicants from all domiciles: 8 days after A level results day

All placed applicants: difference between cycle and 2017 cycle



Note: The percentage change is not plotted in the above chart for groups with fewer than 30 placed applicants in any one cycle.

#### A.4 All placed applicants from all domiciles: 8 days after A level results day

All placed applicants: applicants at 8 days after A level results day

Applicant type	Status	2009	2010	2011	2012	2013	2014	2015	2016	2017	2018
All applicants	Placed	423,100	438,560	451,040	420,380	448,270	464,570	480,050	489,120	482,510	474,630

#### A.5 All placed applicants from all domiciles: 8 days after A level results day

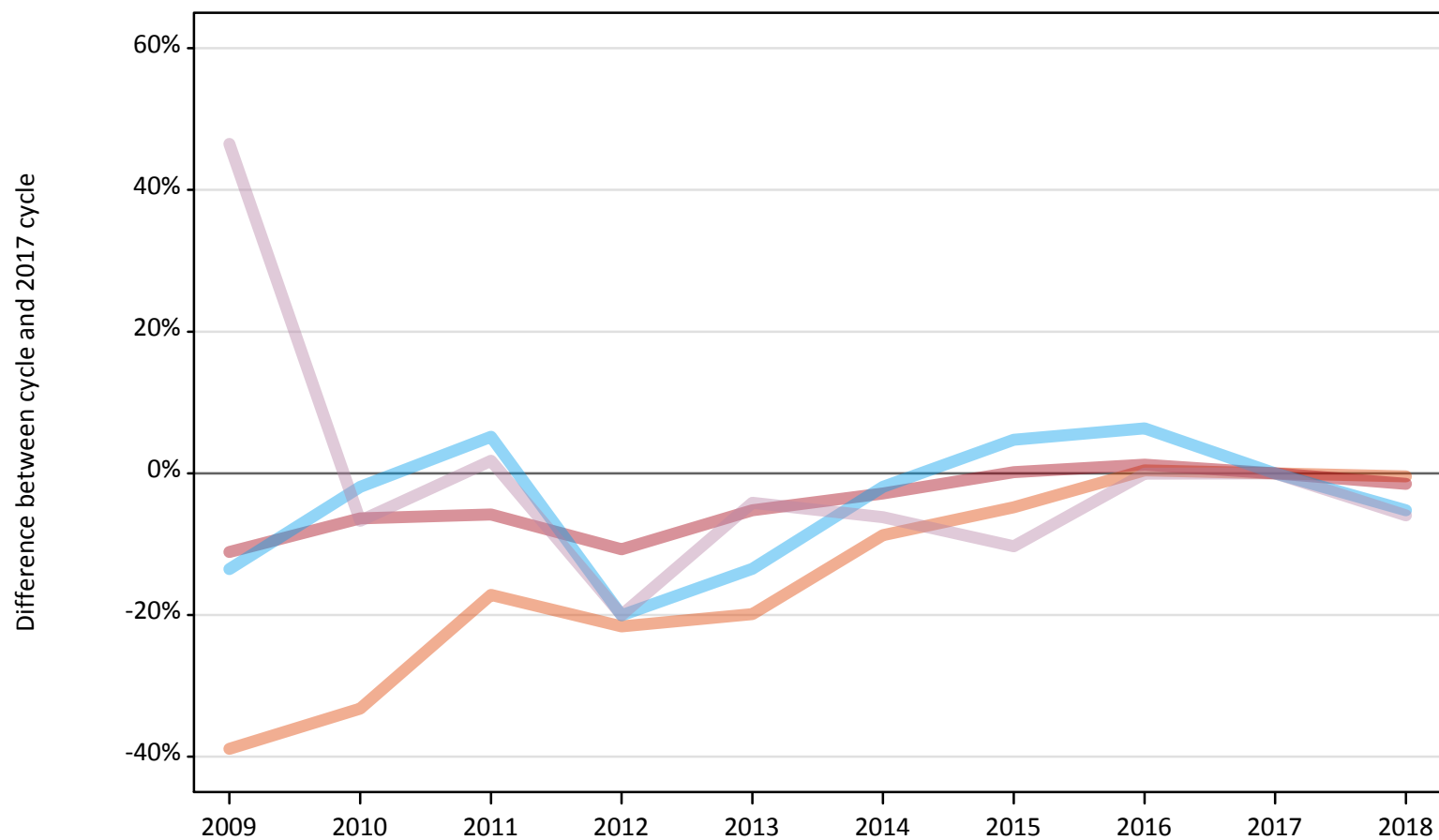
All placed applicants: difference between cycle and 2017 cycle

Applicant type	Status	2009	2010	2011	2012	2013	2014	2015	2016	2017	2018
All applicants	Placed	-12%	-9%	-7%	-13%	-7%	-4%	-1%	1%	0%	-2%

Note: The percentage change is not recorded in the above table for groups with fewer than 10 placed applicants in that cycle or in the 2017 cycle.

**A.6 Placed main scheme applicants from all domiciles: 8 days after A level results day**  
All Main scheme placed routes (excluding Adjustment): difference between cycle and 2017 cycle

- Placed (Clearing)
- Placed (Firm)
- Placed (Insurance)
- Placed (Other)



Note: The percentage change is not plotted in the above chart for groups with fewer than 30 placed applicants in any one cycle.

### A.7 Placed main scheme applicants from all domiciles: 8 days after A level results day

All Main scheme placed routes (excluding Adjustment): applicants at 8 days after A level results day

Applicant type	Status	2009	2010	2011	2012	2013	2014	2015	2016	2017	2018
Main scheme	Placed (Clearing)	23,460	25,630	31,810	30,090	30,770	35,050	36,560	38,550	38,400	38,230
	Placed (Firm)	342,050	360,420	362,390	343,550	364,740	373,820	385,420	389,580	384,860	379,070
	Placed (Insurance)	30,720	34,840	37,350	28,390	30,730	34,850	37,200	37,780	35,520	33,660
	Placed (Other)	21,190	13,500	14,720	11,580	13,860	13,570	12,980	14,460	14,470	13,610

### A.8 Placed main scheme applicants from all domiciles: 8 days after A level results day

All Main scheme placed routes (excluding Adjustment): difference between cycle and 2017 cycle

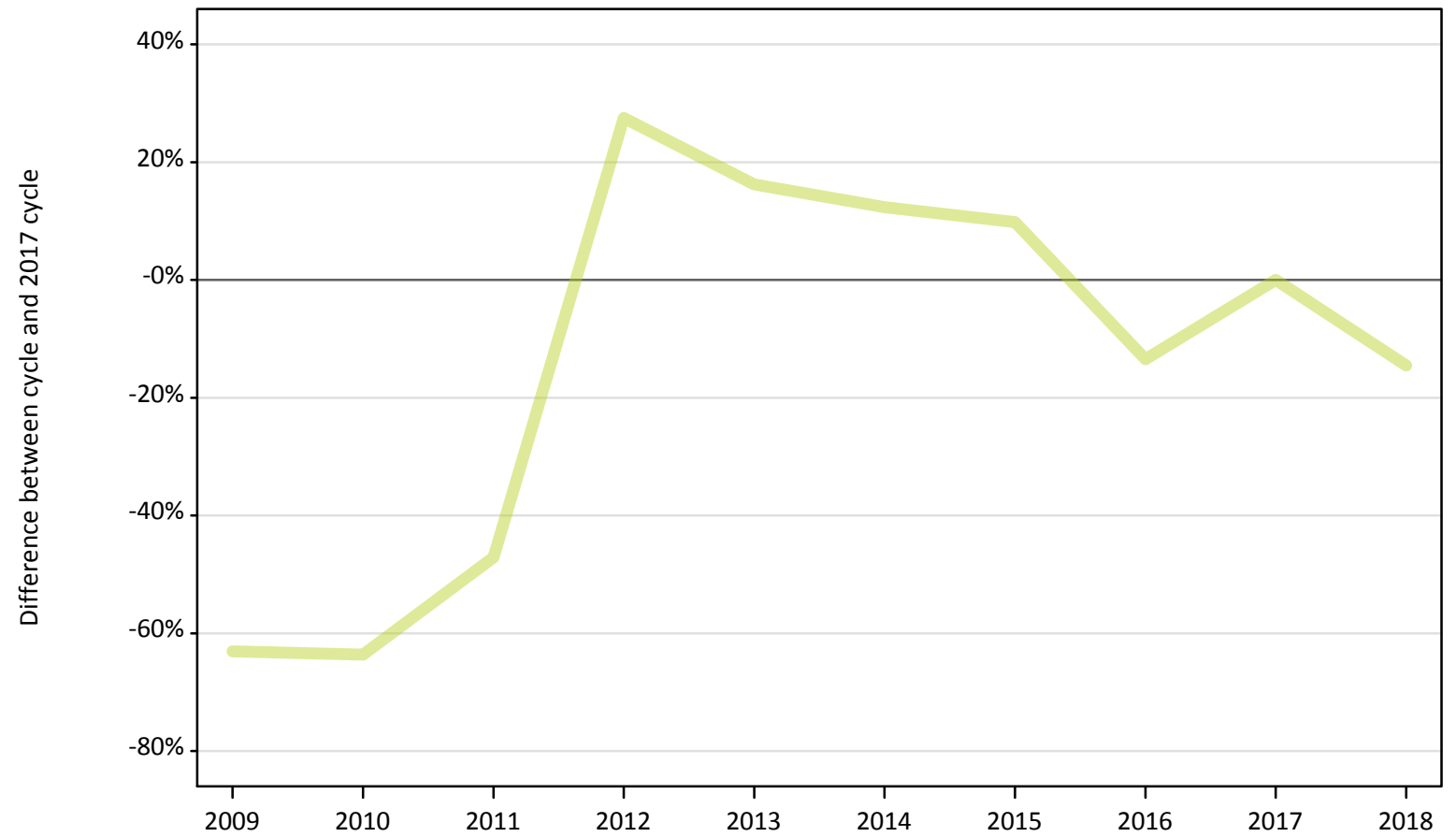
Applicant type	Status	2009	2010	2011	2012	2013	2014	2015	2016	2017	2018
Main scheme	Placed (Clearing)	-39%	-33%	-17%	-22%	-20%	-9%	-5%	0%	0%	-0%
	Placed (Firm)	-11%	-6%	-6%	-11%	-5%	-3%	0%	1%	0%	-2%
	Placed (Insurance)	-14%	-2%	5%	-20%	-13%	-2%	5%	6%	0%	-5%
	Placed (Other)	46%	-7%	2%	-20%	-4%	-6%	-10%	-0%	0%	-6%

Note: The percentage change is not recorded in the above table for groups with fewer than 10 placed applicants in that cycle or in the 2017 cycle.

## A.9 Main scheme applicants placed through adjustment: 8 days after A level results day

Placed through adjustment: difference between cycle and 2017 cycle

Placed (Adjustment)



Note: The percentage change is not plotted in the above chart for groups with fewer than 30 placed applicants in any one cycle.

### A.10 Main scheme applicants placed through adjustment: 8 days after A level results day

Placed through adjustment: applicants at 8 days after A level results day

Applicant type	Status	2009	2010	2011	2012	2013	2014	2015	2016	2017	2018
Main scheme	Placed (Adjustment)	390	390	560	1,350	1,230	1,190	1,170	920	1,060	910

### A.11 Main scheme applicants placed through adjustment: 8 days after A level results day

Placed through adjustment: difference between cycle and 2017 cycle

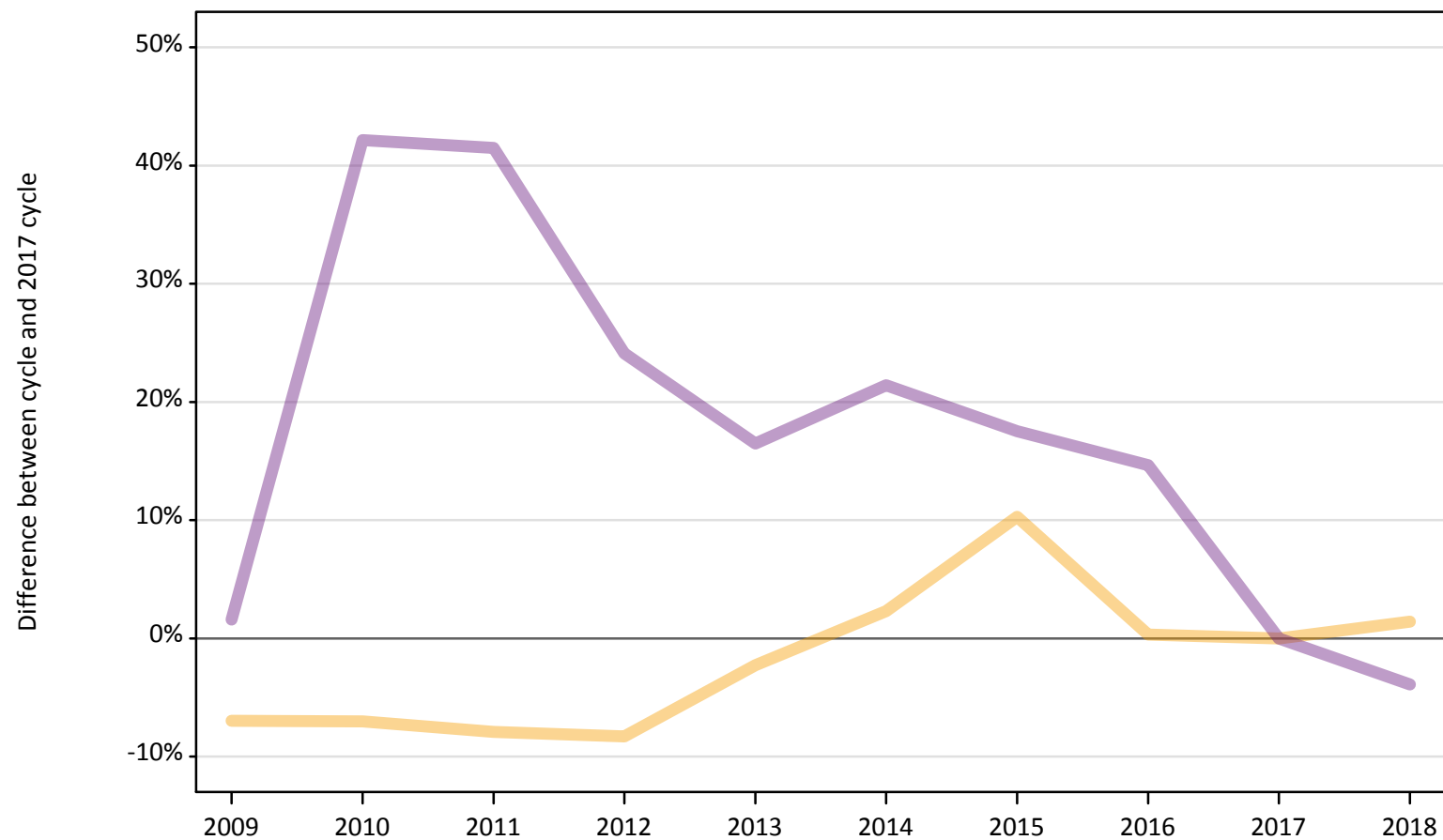
Applicant type	Status	2009	2010	2011	2012	2013	2014	2015	2016	2017	2018
Main scheme	Placed (Adjustment)	-63%	-64%	-47%	28%	16%	12%	10%	-13%	0%	-15%

Note: The percentage change is not recorded in the above table for groups with fewer than 10 placed applicants in that cycle or in the 2017 cycle.

## A.12 Main scheme applicants not currently placed from all domiciles: 8 days after A level results day

Applicants in unplaced states: difference between cycle and 2017 cycle

— Holding offer  
— Free to be placed in Clearing



Note: The percentage change is not plotted in the above chart for groups with fewer than 30 unplaced applicants in any one cycle.



**A.13 Main scheme applicants not currently placed from all domiciles: 8 days after A level results day**

Applicants in unplaced states: applicants at 8 days after A level results day

Applicant type	Status	2009	2010	2011	2012	2013	2014	2015	2016	2017	2018
Main scheme	Holding offer	41,310	41,290	40,880	40,720	43,400	45,430	48,970	44,550	44,410	45,030
	Free to be placed in Clearing	122,950	172,030	171,220	150,200	140,950	146,940	142,240	138,760	121,010	116,280

**A.14 Main scheme applicants not currently placed from all domiciles: 8 days after A level results day**

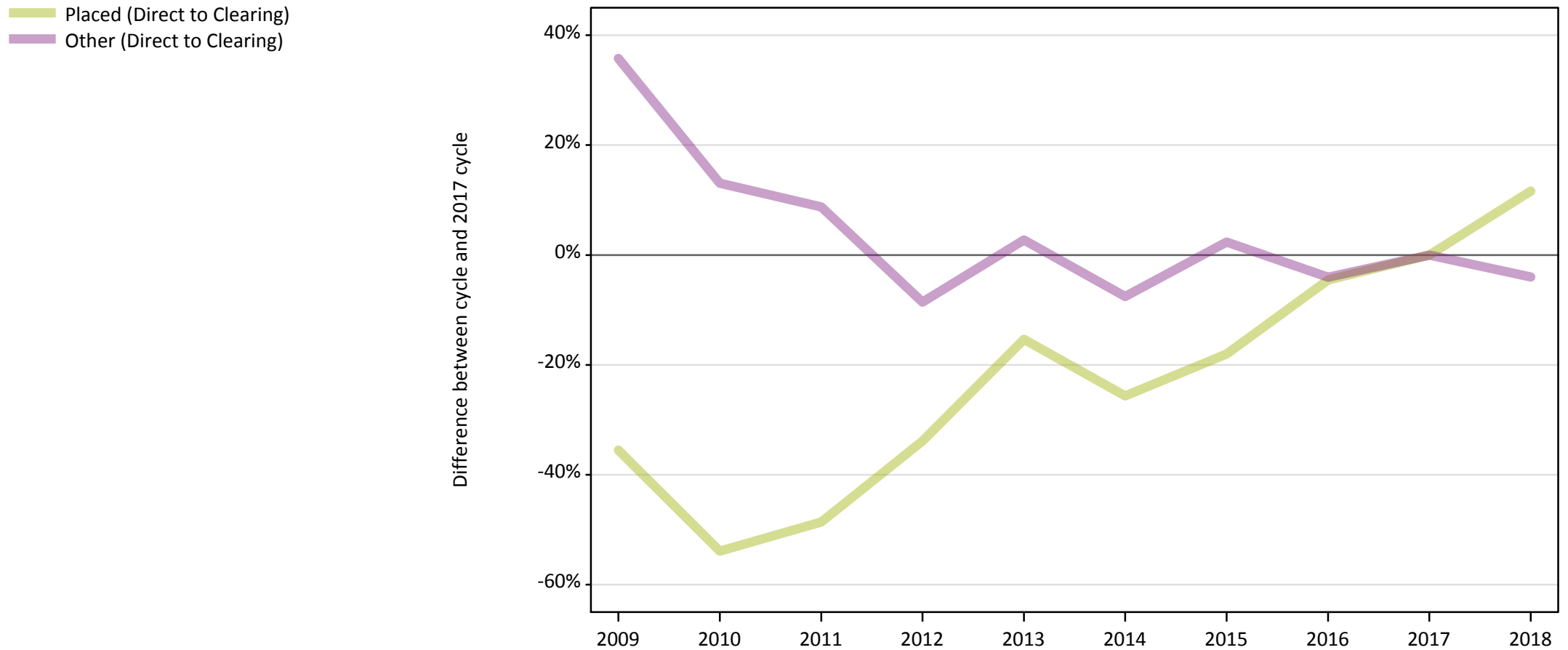
Applicants in unplaced states: difference between cycle and 2017 cycle

Applicant type	Status	2009	2010	2011	2012	2013	2014	2015	2016	2017	2018
Main scheme	Holding offer	-7%	-7%	-8%	-8%	-2%	2%	10%	0%	0%	1%
	Free to be placed in Clearing	2%	42%	41%	24%	16%	21%	18%	15%	0%	-4%

Note: The percentage change is not recorded in the above table for groups with fewer than 10 unplaced applicants in that cycle or in the 2017 cycle.

### A.15 Direct to Clearing applicants from all domiciles: 8 days after A level results day

Direct to Clearing: difference between cycle and 2017 cycle



Note: The percentage change is not plotted in the above chart for groups with fewer than 30 placed applicants in any one cycle.

**A.16 Direct to Clearing applicants from all domiciles: 8 days after A level results day**

Direct to Clearing 8 days after A level results day

Applicant type	Status	2009	2010	2011	2012	2013	2014	2015	2016	2017	2018
Direct to Clearing	Placed (Direct to Clearing)	5,290	3,780	4,210	5,430	6,940	6,100	6,730	7,830	8,200	9,160
	Other (Direct to Clearing)	10,830	9,020	8,670	7,290	8,190	7,370	8,160	7,650	7,970	7,660

**A.17 Direct to Clearing applicants from all domiciles: 8 days after A level results day**

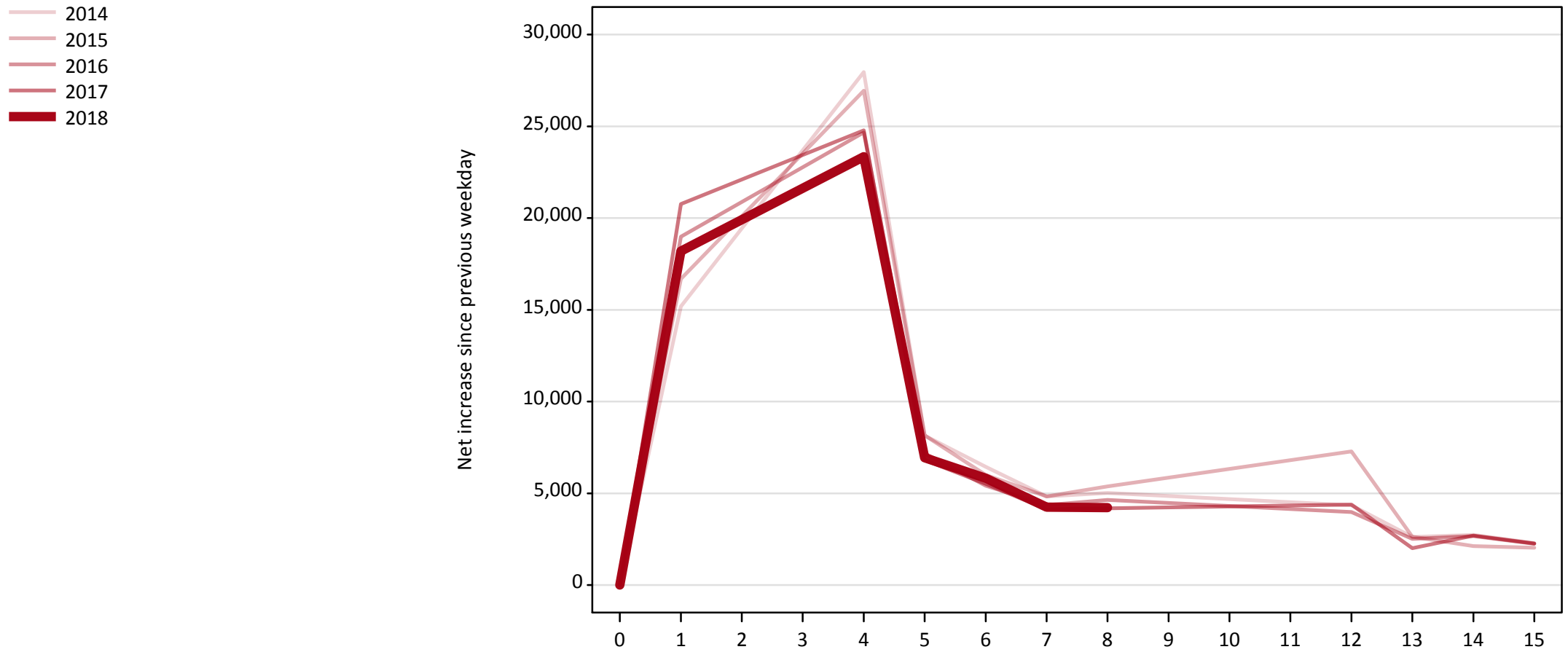
Direct to Clearing: difference between cycle and 2017 cycle

Applicant type	Status	2009	2010	2011	2012	2013	2014	2015	2016	2017	2018
Direct to Clearing	Placed (Direct to Clearing)	-36%	-54%	-49%	-34%	-15%	-26%	-18%	-5%	0%	12%
	Other (Direct to Clearing)	36%	13%	9%	-9%	3%	-8%	2%	-4%	0%	-4%

Note: The percentage change is not recorded in the above table for groups with fewer than 10 placed applicants in that cycle or in the 2017 cycle.

### A.18 All Placed: Daily net change (from all domiciles)

Net increase since previous weekday (2018 cycle up to 8 days after A level results day)

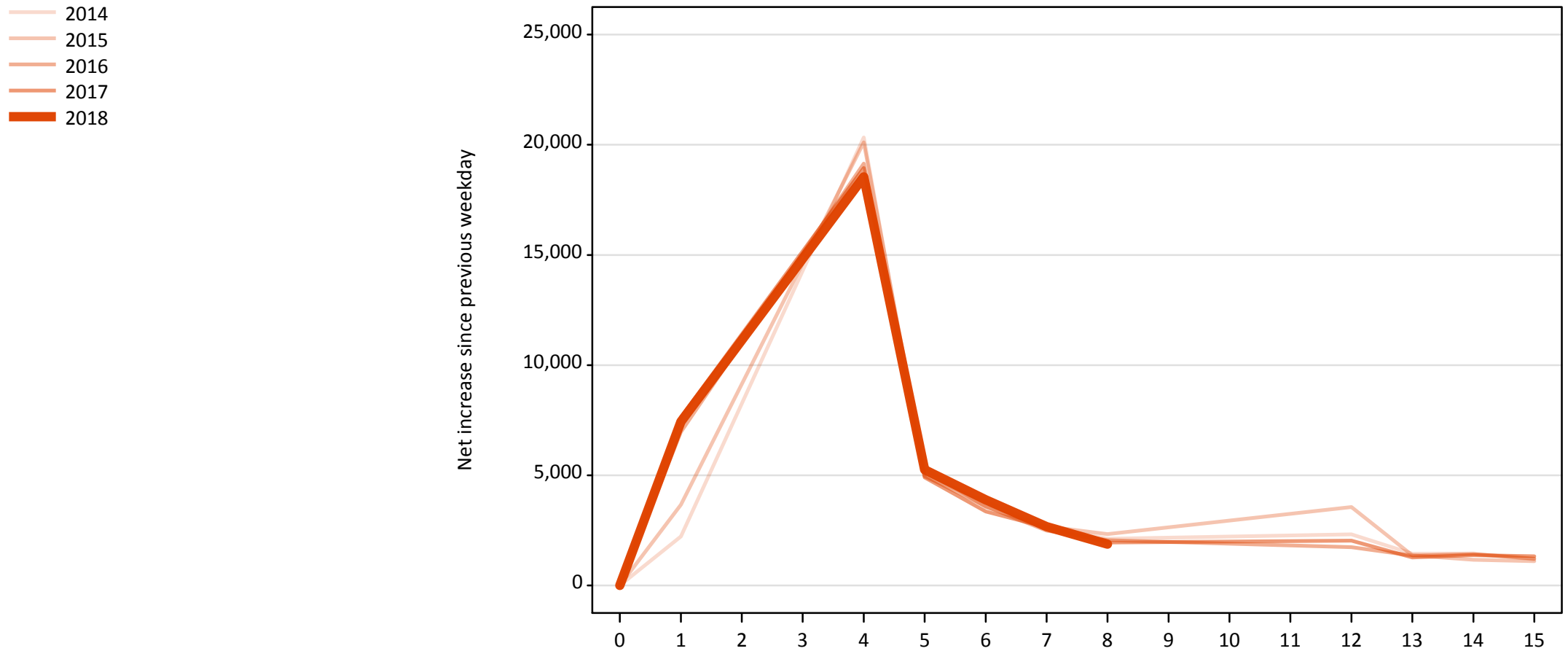


**A.19 All Placed: Daily net change (from all domiciles)**

Net increase since previous weekday (2018 cycle up to 8 days after A level results day)

Applicant status, days since A level results day		2014	2015	2016	2017	2018
All Placed	0	0	0	0	0	0
	1	15,180	16,680	18,990	20,770	18,200
	4	27,960	26,940	24,670	24,790	23,340
	5	8,140	8,160	7,170	6,810	6,940
	6	6,450	6,000	5,410	5,510	5,820
	7	4,830	4,830	4,350	4,140	4,240
	8	5,020	5,370	4,640	4,190	4,220
	12	4,340	7,280	3,980	4,380	
	13	2,620	2,630	2,510	2,010	
	14	2,730	2,120	2,660	2,700	
	15	2,280	2,030	2,250	2,260	

**A.20 Placed through Clearing only: Daily net change (from all domiciles)**  
Net increase since previous weekday (2018 cycle up to 8 days after A level results day)



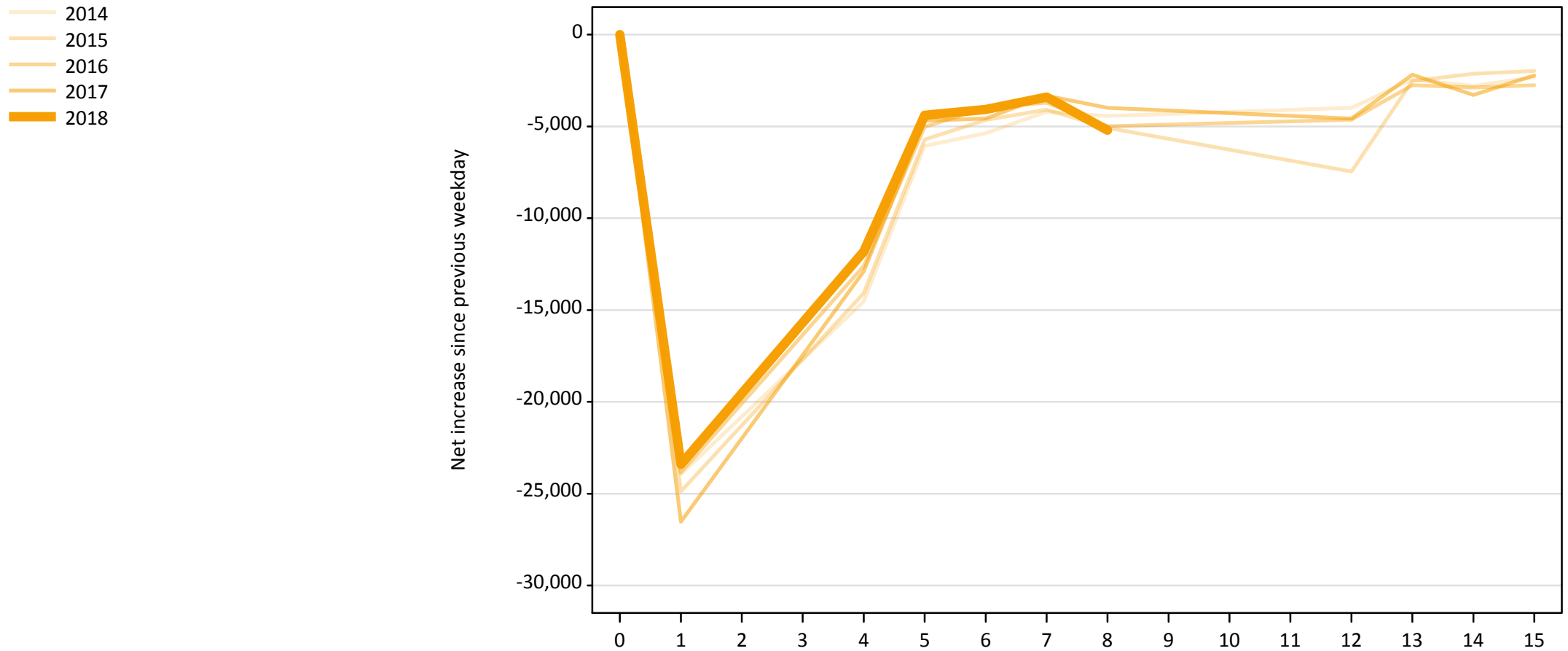
### A.21 Placed through Clearing only: Daily net change (from all domiciles)

Net increase since previous weekday (2018 cycle up to 8 days after A level results day)

Applicant status, days since A level results day		2014	2015	2016	2017	2018
Placed through Clearing only	0	0	0	0	0	0
	1	2,220	3,660	6,970	7,640	7,440
	4	20,340	20,110	19,140	18,940	18,550
	5	4,950	5,290	4,960	4,910	5,250
	6	3,810	3,560	3,590	3,360	3,890
	7	2,650	2,680	2,480	2,640	2,660
	8	2,120	2,330	2,050	1,950	1,880
	12	2,310	3,550	1,740	2,030	
	13	1,450	1,370	1,350	1,270	
	14	1,450	1,160	1,420	1,370	
	15	1,190	1,100	1,210	1,320	

## A.22 Holding Offer: Daily net change (from all domiciles)

Net increase since previous weekday (2018 cycle up to 8 days after A level results day)



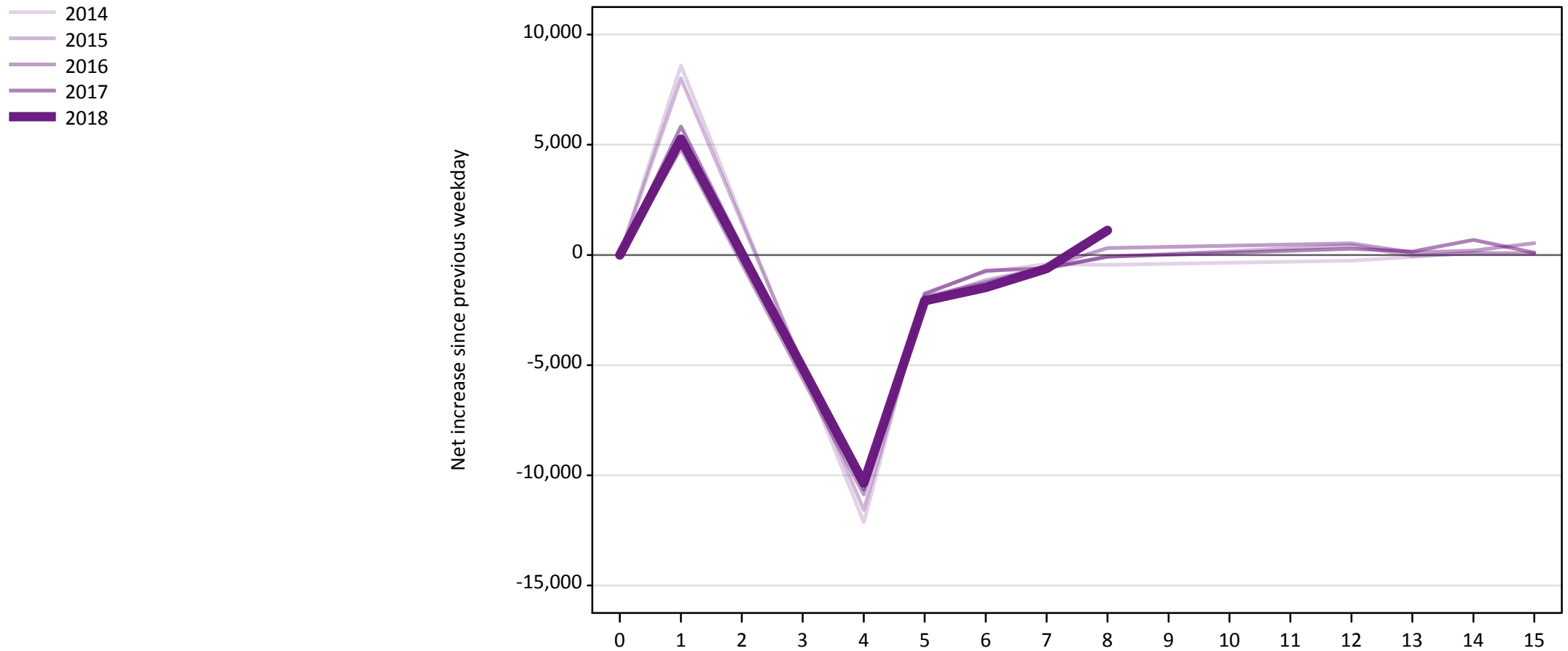


### A.23 Holding Offer: Daily net change (from all domiciles)

Net increase since previous weekday (2018 cycle up to 8 days after A level results day)

Applicant status, days since A level results day	2014	2015	2016	2017	2018	
Holding Offer	0	0	0	0	0	
	1	-23,940	-24,880	-23,840	-26,530	-23,410
	4	-14,530	-14,080	-12,600	-12,900	-11,810
	5	-6,060	-5,720	-5,030	-4,680	-4,390
	6	-5,380	-4,650	-3,970	-4,580	-4,080
	7	-4,210	-4,090	-3,700	-3,330	-3,400
	8	-4,430	-5,080	-4,990	-3,990	-5,210
	12	-3,980	-7,460	-4,640	-4,580	
	13	-2,450	-2,520	-2,760	-2,180	
	14	-2,790	-2,130	-2,880	-3,280	
	15	-2,330	-1,980	-2,760	-2,230	

**A.24 Free to be placed in Clearing: Daily net change (from all domiciles)**  
Net increase since previous weekday (2018 cycle up to 8 days after A level results day)



**A.25 Free to be placed in Clearing: Daily net change (from all domiciles)**

Net increase since previous weekday (2018 cycle up to 8 days after A level results day)

Applicant status, days since A level results day		2014	2015	2016	2017	2018
Free to be placed in Clearing	0	0	0	0	0	0
	1	8,600	8,010	4,820	5,830	5,260
	4	-12,130	-11,570	-10,870	-10,650	-10,350
	5	-1,720	-2,040	-1,900	-1,780	-2,080
	6	-770	-1,130	-1,250	-710	-1,480
	7	-420	-570	-540	-610	-620
	8	-450	-80	310	-80	1,120
	12	-260	430	530	280	
	13	-90	-40	120	150	
	14	100	80	200	680	
	15	90	60	530	100	