

Daily Clearing Analysis: Country

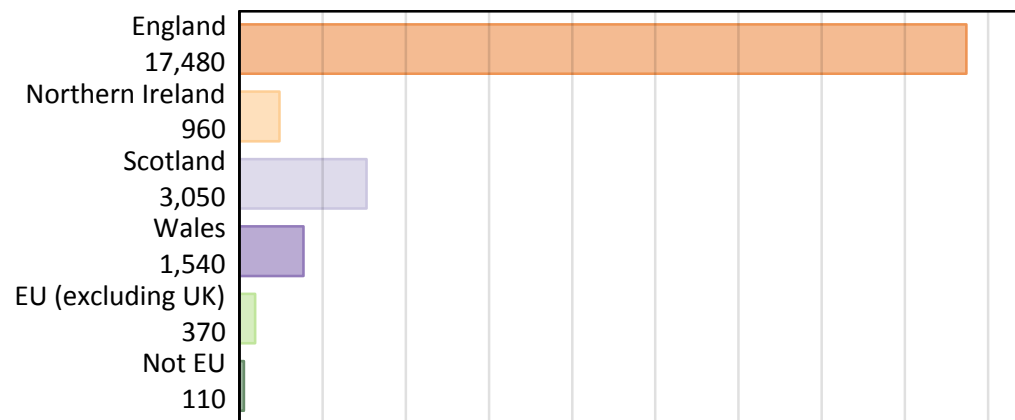
B7 Nursing analysis at 00:05 on Thursday 23 August 2018 (7 days after A level results day)

BB.1 Placed applicants to nursing by country of provider and domicile, 2018 cycle

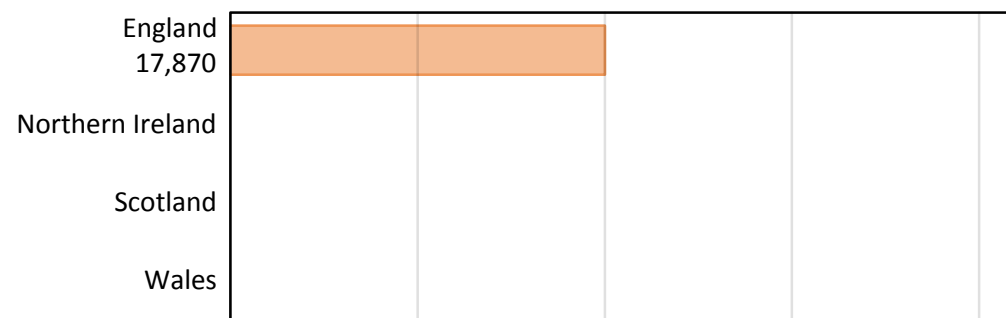
Domicile of applicant	Country of provider				
	England	Northern Ireland	Scotland	Wales	UK
England	17,150				17,480
Northern Ireland	170				960
Scotland	20				3,050
Wales	290				1,540
EU (excluding UK)	150				370
Not EU	90				110
All	17,870				23,500

Note that figures for providers in Northern Ireland, Scotland, and Wales are not reported here.

BB.2 Placed applicants to nursing by domicile group



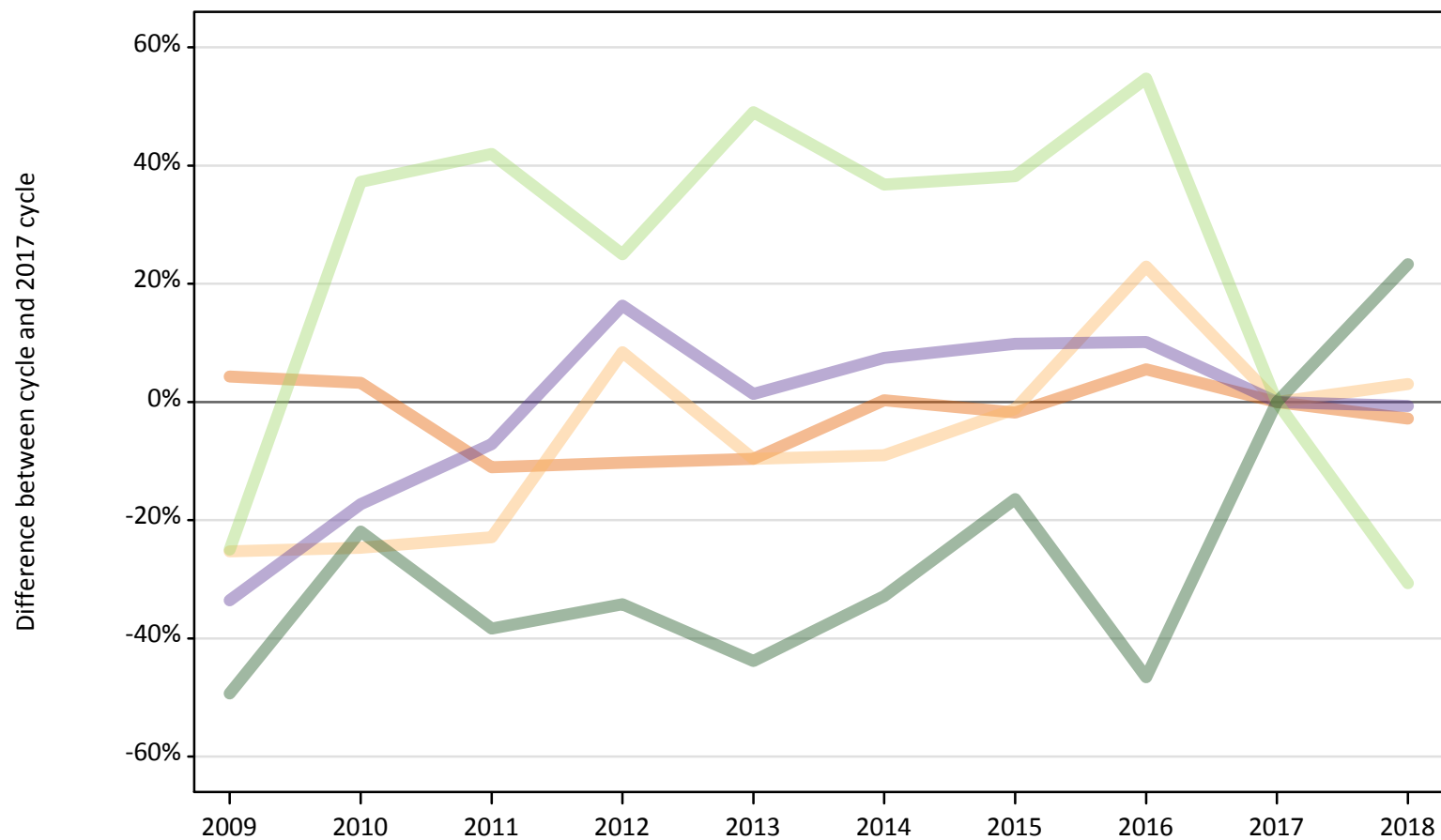
BB.3 Placed applicants to nursing by country of provider



Note that figures for providers in Northern Ireland, Scotland, and Wales are not reported here.

BB.4 Placed applicants to nursing at 7 days after A level results day: providers in England
Selected applicant domiciles: difference between cycle and 2017 cycle (at 7 days after A level results day)

- England
- Northern Ireland
- Scotland
- Wales
- EU (excluding UK)
- Not EU



Note: The percentage change is not plotted in the above chart for groups with fewer than 30 placed applicants in any one cycle.

BB.5 Placed applicants to nursing at 7 days after A level results day: providers in England

Placed applicants to nursing by domicile (at 7 days after A level results day)

Domicile of applicant	2009	2010	2011	2012	2013	2014	2015	2016	2017	2018
England	18,400	18,220	15,690	15,830	15,950	17,690	17,330	18,620	17,650	17,150
Northern Ireland	120	130	130	180	150	150	160	200	170	170
Scotland	40	30	30	40	20	40	30	30	20	20
Wales	200	240	270	340	300	320	320	330	300	290
EU (excluding UK)	160	290	300	270	320	290	290	330	210	150
Not EU	40	60	50	50	40	50	60	40	70	90

BB.6 Placed applicants to nursing at 7 days after A level results day: providers in England

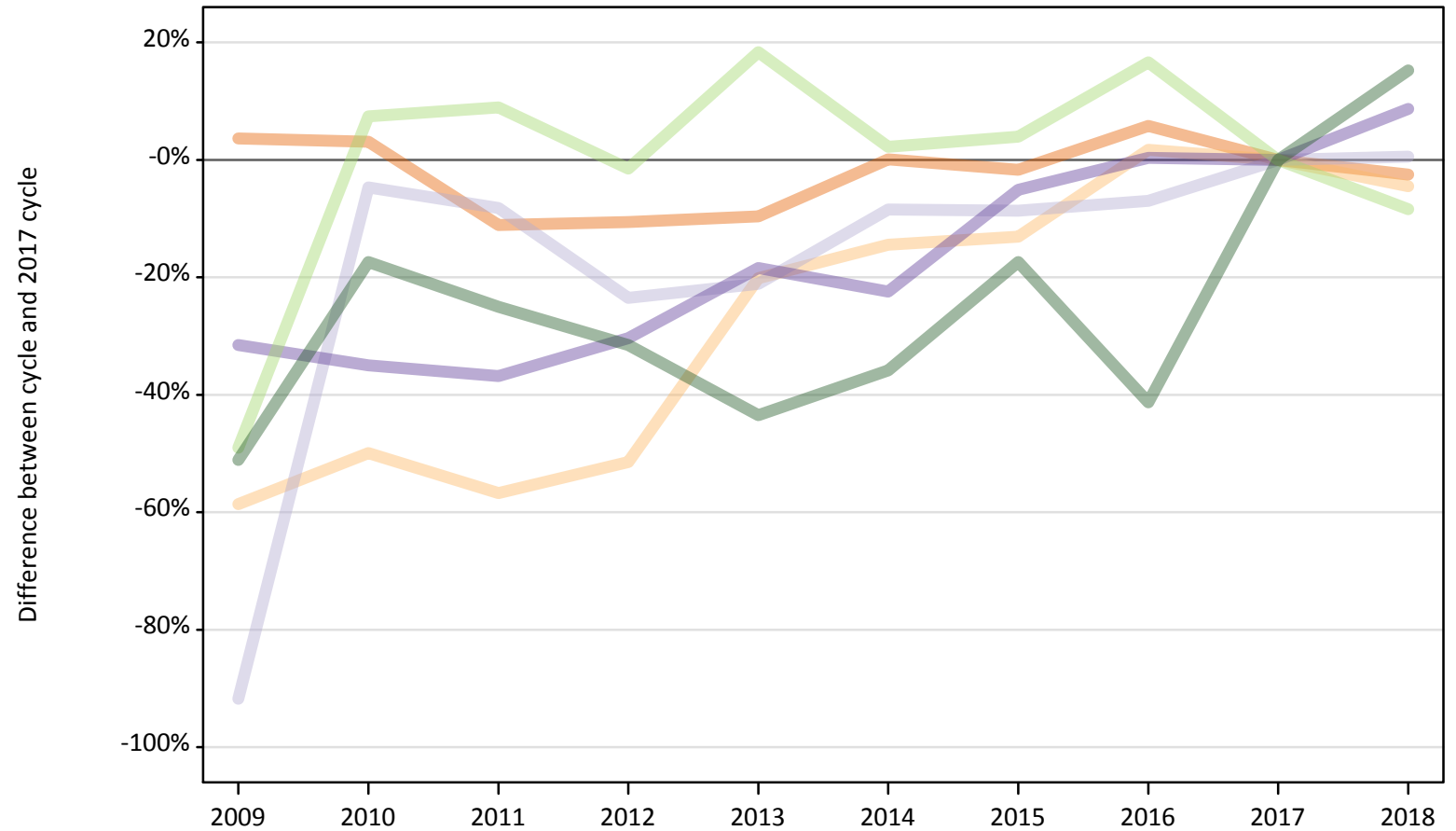
Selected applicant domiciles: difference between cycle and 2017 cycle (at 7 days after A level results day)

Domicile of applicant	2009	2010	2011	2012	2013	2014	2015	2016	2017	2018
England	4%	3%	-11%	-10%	-10%	0%	-2%	6%	0%	-3%
Northern Ireland	-25%	-25%	-23%	8%	-10%	-9%	-1%	23%	0%	3%
Scotland	90%	62%	38%	90%	0%	76%	38%	38%	0%	-29%
Wales	-34%	-17%	-7%	16%	1%	7%	10%	10%	0%	-1%
EU (excluding UK)	-25%	37%	42%	25%	49%	37%	38%	55%	0%	-31%
Not EU	-49%	-22%	-38%	-34%	-44%	-33%	-16%	-47%	0%	23%

Note: The percentage change is not recorded in the above table for groups with fewer than 10 placed applicants in that cycle or in the 2017 cycle.

BB.7 Placed applicants to nursing at 7 days after A level results day: providers in the UK
 Selected applicant domiciles: difference between cycle and 2017 cycle (at 7 days after A level results day)

- England
- Northern Ireland
- Scotland
- Wales
- EU (excluding UK)
- Not EU



Note: The percentage change is not plotted in the above chart for groups with fewer than 30 placed applicants in any one cycle.

BB.8 Placed applicants to nursing at 7 days after A level results day: providers in the UK

Placed applicants to nursing by domicile (at 7 days after A level results day)

Domicile of applicant	2009	2010	2011	2012	2013	2014	2015	2016	2017	2018
England	18,580	18,480	15,940	16,020	16,200	17,950	17,620	18,960	17,930	17,480
Northern Ireland	420	500	430	490	800	860	870	1,020	1,000	960
Scotland	250	2,890	2,790	2,320	2,400	2,780	2,770	2,820	3,040	3,050
Wales	970	920	900	990	1,160	1,100	1,350	1,420	1,420	1,540
EU (excluding UK)	210	430	440	400	480	410	420	470	400	370
Not EU	50	80	70	60	50	60	80	50	90	110

BB.9 Placed applicants to nursing at 7 days after A level results day: providers in the UK

Selected applicant domiciles: difference between cycle and 2017 cycle (at 7 days after A level results day)

Domicile of applicant	2009	2010	2011	2012	2013	2014	2015	2016	2017	2018
England	4%	3%	-11%	-11%	-10%	0%	-2%	6%	0%	-3%
Northern Ireland	-59%	-50%	-57%	-51%	-20%	-14%	-13%	2%	0%	-4%
Scotland	-92%	-5%	-8%	-24%	-21%	-8%	-9%	-7%	0%	1%
Wales	-32%	-35%	-37%	-30%	-18%	-22%	-5%	0%	0%	9%
EU (excluding UK)	-49%	7%	9%	-1%	18%	2%	4%	17%	0%	-8%
Not EU	-51%	-17%	-25%	-32%	-43%	-36%	-17%	-41%	0%	15%

Note: The percentage change is not recorded in the above table for groups with fewer than 10 placed applicants in that cycle or in the 2017 cycle.