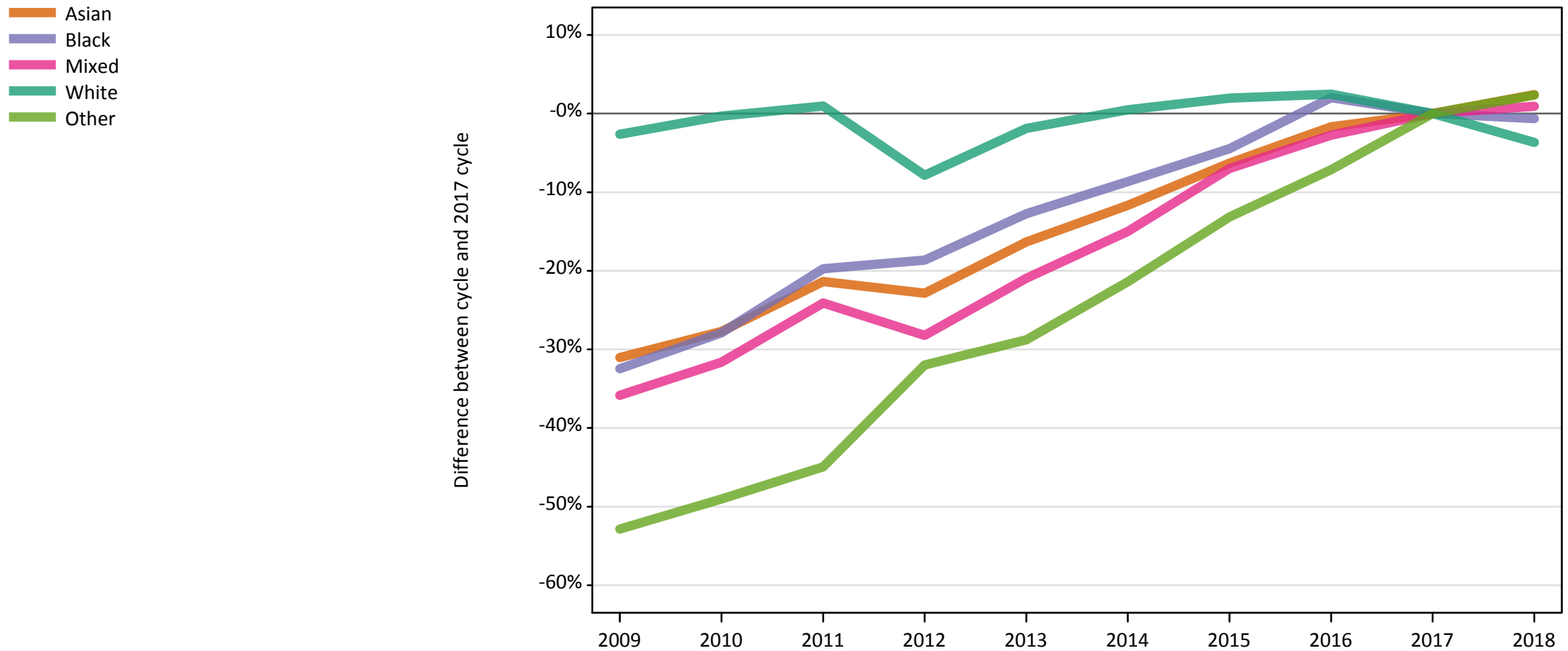


Daily Clearing Analysis: Ethnicity

Analysis at 00:05 on Thursday 23 August 2018 (7 days after A level results day)

E.1 Placed applicants from UK by ethnic group: 7 days after A level results day

Placed applicants: change relative to 2017 cycle totals



Note: The percentage change is not plotted in the above chart for groups with fewer than 30 placed applicants in any one cycle.

E.2 Placed applicants from UK by ethnic group: 7 days after A level results day

Applicant Status	Ethnic group	2009	2010	2011	2012	2013	2014	2015	2016	2017	2018
Placed	Asian	33,360	34,960	38,030	37,320	40,470	42,720	45,310	47,550	48,360	49,530
	Black	19,420	20,730	23,080	23,400	25,090	26,260	27,470	29,330	28,750	28,560
	Mixed	11,790	12,570	13,950	13,190	14,530	15,630	17,100	17,880	18,380	18,550
	White	301,640	308,790	312,730	285,440	303,890	311,310	315,870	317,460	309,770	298,410
	Other	3,270	3,540	3,820	4,720	4,940	5,450	6,020	6,440	6,930	7,100

E.3 Placed applicants from UK by ethnic group: 7 days after A level results day

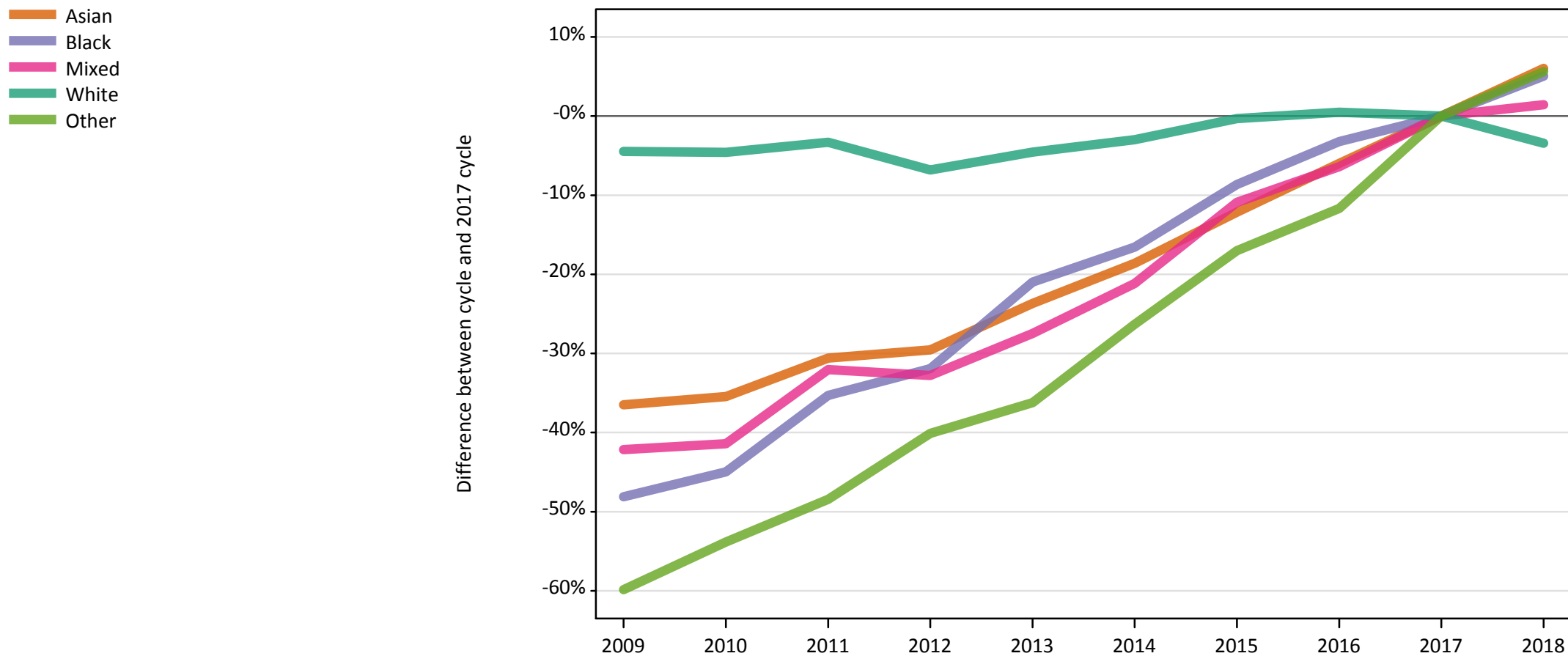
Placed applicants: change relative to 2017 cycle totals

Applicant Status	Ethnic group	2009	2010	2011	2012	2013	2014	2015	2016	2017	2018
Placed	Asian	-31%	-28%	-21%	-23%	-16%	-12%	-6%	-2%	0%	2%
	Black	-32%	-28%	-20%	-19%	-13%	-9%	-4%	2%	0%	-1%
	Mixed	-36%	-32%	-24%	-28%	-21%	-15%	-7%	-3%	0%	1%
	White	-3%	-0%	1%	-8%	-2%	0%	2%	2%	0%	-4%
	Other	-53%	-49%	-45%	-32%	-29%	-21%	-13%	-7%	0%	2%

Note: The percentage change is not recorded in the above table for groups with fewer than 10 placed applicants in that cycle or in the 2017 cycle.

E.4 Placed 18 year old applicants from UK by ethnic group: 7 days after A level results day

Placed 18 year old applicants: change relative to 2017 cycle totals



Note: The percentage change is not plotted in the above chart for groups with fewer than 30 placed applicants in any one cycle.

E.5 Placed 18 year old applicants from UK by ethnic group: 7 days after A level results day

Applicant Status	Ethnic group	2009	2010	2011	2012	2013	2014	2015	2016	2017	2018
Placed	Asian	17,970	18,260	19,640	19,930	21,590	23,030	24,860	26,610	28,300	30,000
	Black	6,120	6,500	7,640	8,030	9,330	9,850	10,780	11,420	11,800	12,400
	Mixed	5,990	6,070	7,040	6,960	7,510	8,160	9,230	9,690	10,360	10,500
	White	173,010	172,800	175,090	168,770	172,860	175,660	180,500	181,980	181,080	174,870
	Other	1,380	1,590	1,770	2,060	2,190	2,530	2,850	3,030	3,430	3,630

E.6 Placed 18 year old applicants from UK by ethnic group: 7 days after A level results day

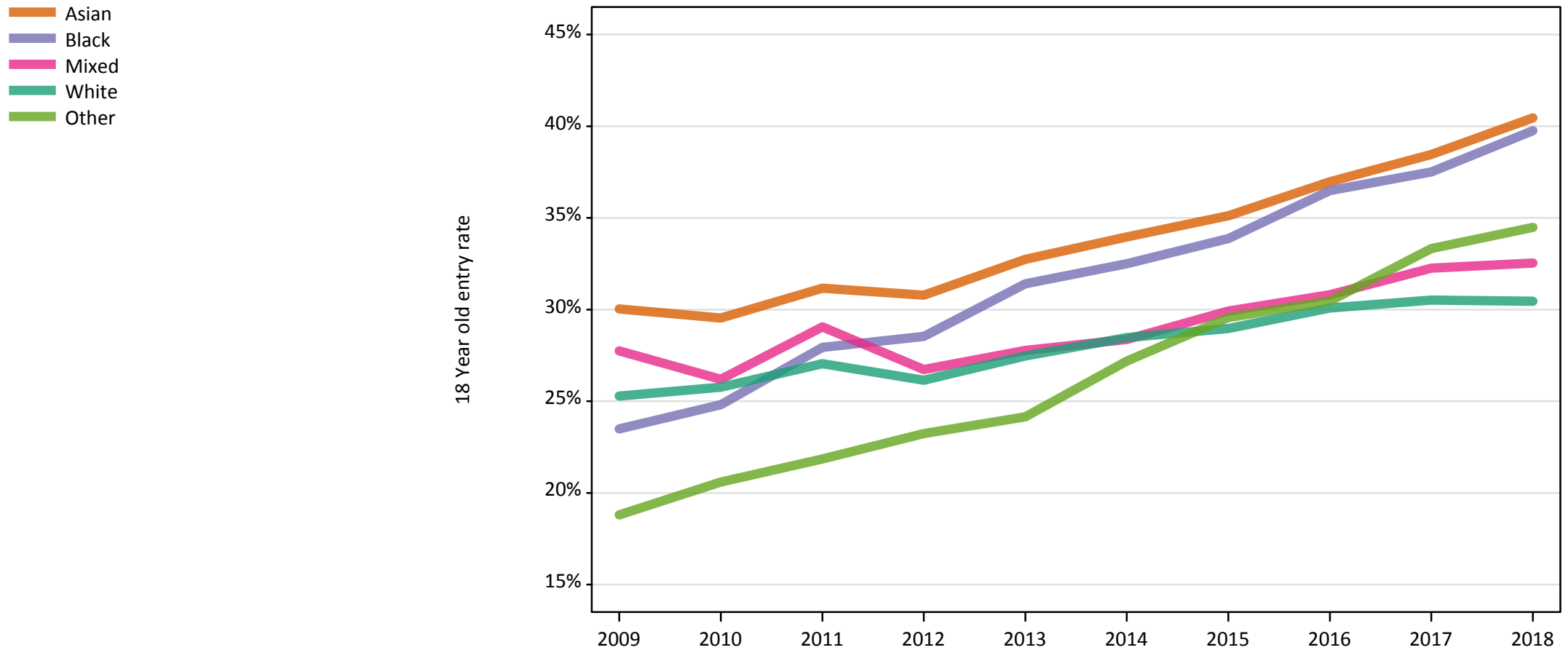
Placed 18 year old applicants: change relative to 2017 cycle totals

Applicant Status	Ethnic group	2009	2010	2011	2012	2013	2014	2015	2016	2017	2018
Placed	Asian	-36%	-35%	-31%	-30%	-24%	-19%	-12%	-6%	0%	6%
	Black	-48%	-45%	-35%	-32%	-21%	-17%	-9%	-3%	0%	5%
	Mixed	-42%	-41%	-32%	-33%	-27%	-21%	-11%	-6%	0%	1%
	White	-4%	-5%	-3%	-7%	-5%	-3%	-0%	0%	0%	-3%
	Other	-60%	-54%	-48%	-40%	-36%	-26%	-17%	-12%	0%	6%

Note: The percentage change is not recorded in the above table for groups with fewer than 10 placed applicants in that cycle or in the 2017 cycle.

E.7 Placed 18 year old applicants from UK by ethnic group: 7 days after A level results day

Placed 18 year old applicants: entry rate



E.8 Placed 18 year old applicants from UK by ethnic group: 7 days after A level results day

Placed 18 year old applicants: entry rate

Applicant Status	Ethnic group	2009	2010	2011	2012	2013	2014	2015	2016	2017	2018
Placed	Asian	30.0%	29.5%	31.2%	30.8%	32.7%	34.0%	35.1%	37.0%	38.5%	40.5%
	Black	23.5%	24.8%	27.9%	28.5%	31.4%	32.5%	33.9%	36.5%	37.5%	39.8%
	Mixed	27.7%	26.2%	29.1%	26.7%	27.8%	28.4%	29.9%	30.8%	32.3%	32.5%
	White	25.3%	25.8%	27.0%	26.1%	27.5%	28.5%	29.0%	30.1%	30.5%	30.5%
	Other	18.8%	20.6%	21.9%	23.2%	24.2%	27.2%	29.6%	30.5%	33.3%	34.5%

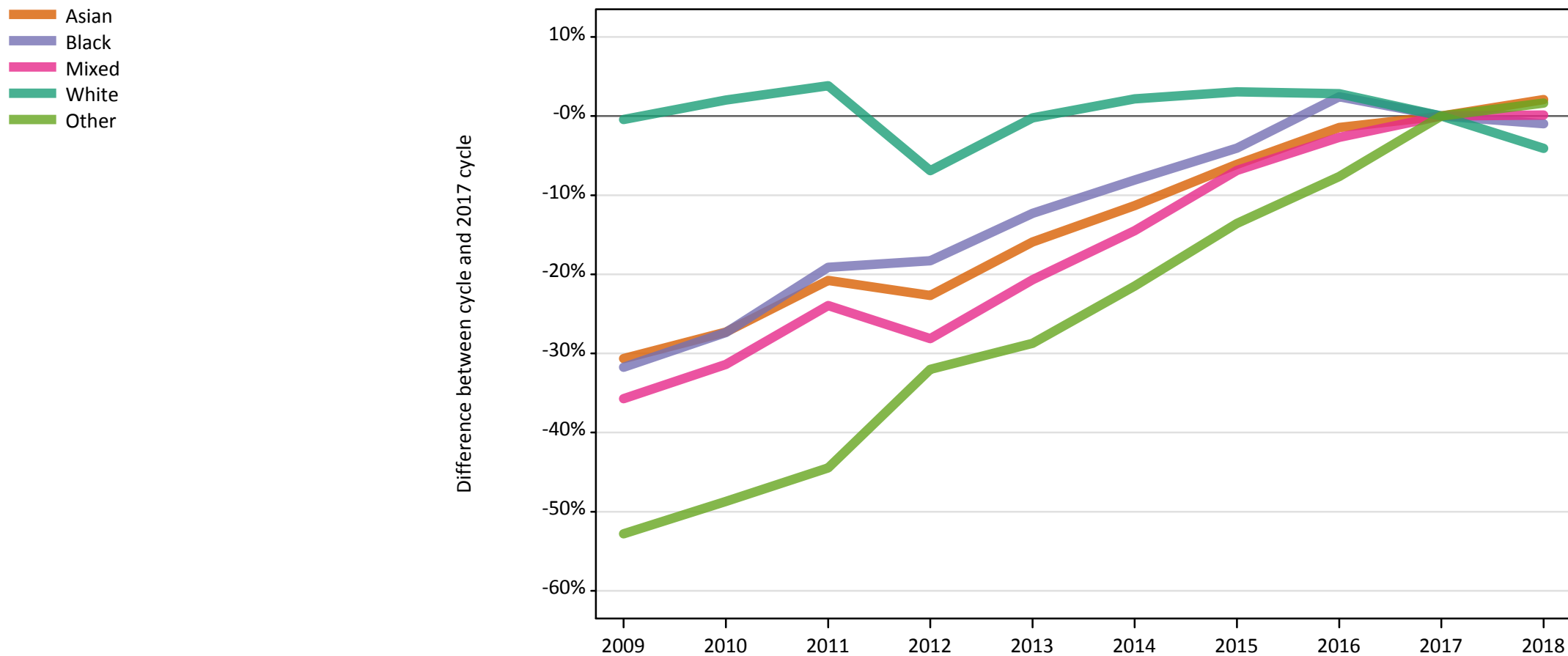
E.9 Placed 18 year old applicants from UK by ethnic group: 7 days after A level results day

Placed 18 year old applicants: entry rate (indexed to 100 = White ethnic group)

Applicant Status	Ethnic group	2009	2010	2011	2012	2013	2014	2015	2016	2017	2018
Placed	Asian	119	115	115	118	119	119	121	123	126	133
	Black	93	96	103	109	114	114	117	121	123	131
	Mixed	110	102	107	102	101	100	103	102	106	107
	White	100	100	100	100	100	100	100	100	100	100
	Other	74	80	81	89	88	95	102	101	109	113

E.10 Placed applicants from England by ethnic group: 7 days after A level results day

Placed applicants: change relative to 2017 cycle totals



Note: The percentage change is not plotted in the above chart for groups with fewer than 30 placed applicants in any one cycle.

E.11 Placed applicants from England by ethnic group: 7 days after A level results day

Applicant Status	Ethnic group	2009	2010	2011	2012	2013	2014	2015	2016	2017	2018
Placed	Asian	31,870	33,420	36,420	35,540	38,650	40,760	43,160	45,300	45,960	46,920
	Black	19,060	20,290	22,590	22,820	24,500	25,670	26,800	28,610	27,930	27,660
	Mixed	11,050	11,800	13,070	12,360	13,640	14,700	16,010	16,730	17,190	17,220
	White	248,210	254,340	258,850	232,080	248,710	254,690	256,890	256,330	249,250	239,090
	Other	3,120	3,390	3,670	4,500	4,720	5,190	5,720	6,110	6,620	6,720

E.12 Placed applicants from England by ethnic group: 7 days after A level results day

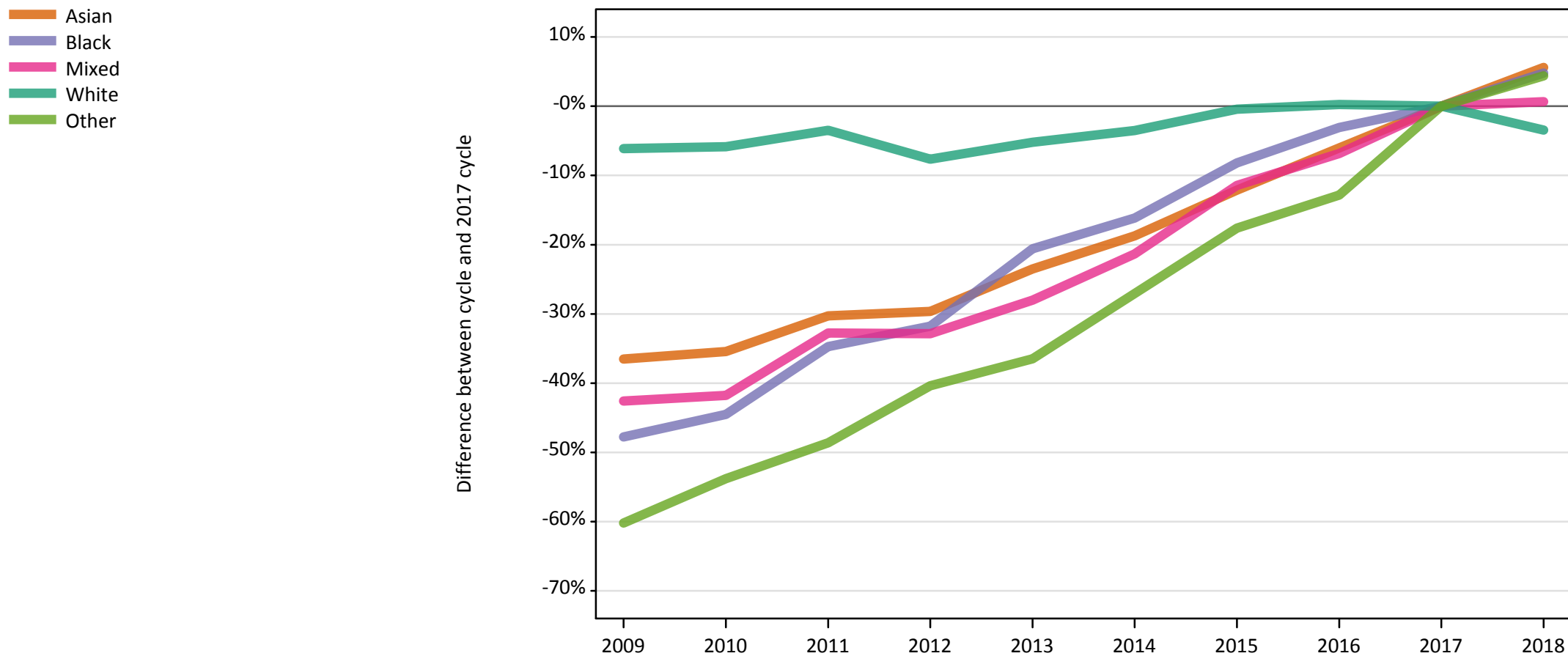
Placed applicants: change relative to 2017 cycle totals

Applicant Status	Ethnic group	2009	2010	2011	2012	2013	2014	2015	2016	2017	2018
Placed	Asian	-31%	-27%	-21%	-23%	-16%	-11%	-6%	-1%	0%	2%
	Black	-32%	-27%	-19%	-18%	-12%	-8%	-4%	2%	0%	-1%
	Mixed	-36%	-31%	-24%	-28%	-21%	-14%	-7%	-3%	0%	0%
	White	-0%	2%	4%	-7%	-0%	2%	3%	3%	0%	-4%
	Other	-53%	-49%	-44%	-32%	-29%	-21%	-14%	-8%	0%	2%

Note: The percentage change is not recorded in the above table for groups with fewer than 10 placed applicants in that cycle or in the 2017 cycle.

E.13 Placed 18 year old applicants from England by ethnic group: 7 days after A level results day

Placed 18 year old applicants: change relative to 2017 cycle totals



Note: The percentage change is not plotted in the above chart for groups with fewer than 30 placed applicants in any one cycle.

E.14 Placed 18 year old applicants from England by ethnic group: 7 days after A level results day

Applicant Status	Ethnic group	2009	2010	2011	2012	2013	2014	2015	2016	2017	2018
Placed	Asian	17,220	17,510	18,900	19,080	20,740	22,040	23,830	25,490	27,120	28,630
	Black	6,040	6,410	7,550	7,890	9,180	9,700	10,620	11,210	11,560	12,120
	Mixed	5,620	5,690	6,580	6,570	7,040	7,700	8,660	9,110	9,780	9,850
	White	141,180	141,530	145,130	138,880	142,530	145,090	149,730	150,730	150,360	145,180
	Other	1,320	1,530	1,700	1,980	2,100	2,420	2,730	2,890	3,310	3,460

E.15 Placed 18 year old applicants from England by ethnic group: 7 days after A level results day

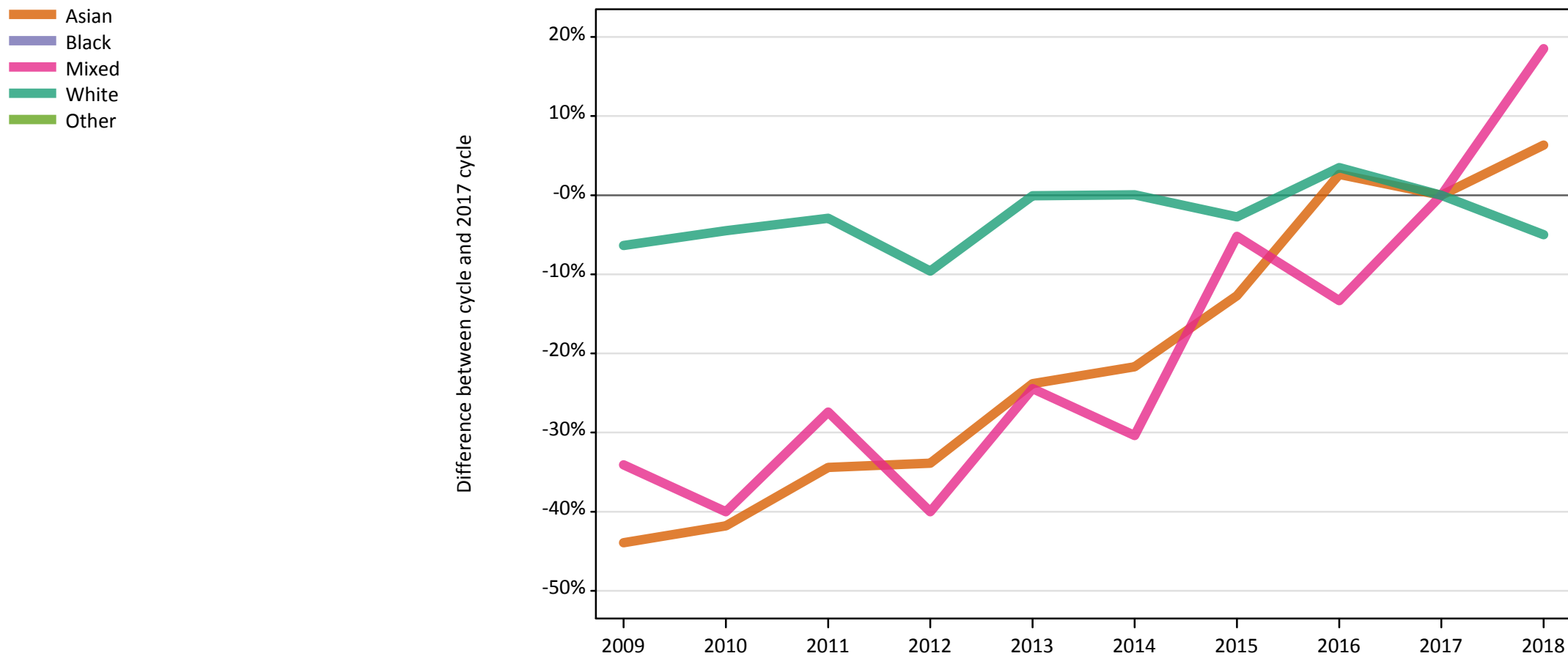
Placed 18 year old applicants: change relative to 2017 cycle totals

Applicant Status	Ethnic group	2009	2010	2011	2012	2013	2014	2015	2016	2017	2018
Placed	Asian	-37%	-35%	-30%	-30%	-24%	-19%	-12%	-6%	0%	6%
	Black	-48%	-45%	-35%	-32%	-21%	-16%	-8%	-3%	0%	5%
	Mixed	-43%	-42%	-33%	-33%	-28%	-21%	-11%	-7%	0%	1%
	White	-6%	-6%	-3%	-8%	-5%	-4%	-0%	0%	0%	-3%
	Other	-60%	-54%	-49%	-40%	-36%	-27%	-18%	-13%	0%	4%

Note: The percentage change is not recorded in the above table for groups with fewer than 10 placed applicants in that cycle or in the 2017 cycle.

E.16 Placed applicants from Northern Ireland by ethnic group: 7 days after A level results day

Placed applicants: change relative to 2017 cycle totals



Note: The percentage change is not plotted in the above chart for groups with fewer than 30 placed applicants in any one cycle.

E.17 Placed applicants from Northern Ireland by ethnic group: 7 days after A level results day

Applicant Status	Ethnic group	2009	2010	2011	2012	2013	2014	2015	2016	2017	2018
Placed	Asian	110	110	120	130	140	150	170	190	190	200
	Black	10	20	20	20	30	40	40	50	50	50
	Mixed	90	80	100	80	100	90	130	120	140	160
	White	12,310	12,550	12,760	11,880	13,130	13,150	12,780	13,600	13,140	12,490
	Other	10	20	10	10	10	20	10	20	20	20

E.18 Placed applicants from Northern Ireland by ethnic group: 7 days after A level results day

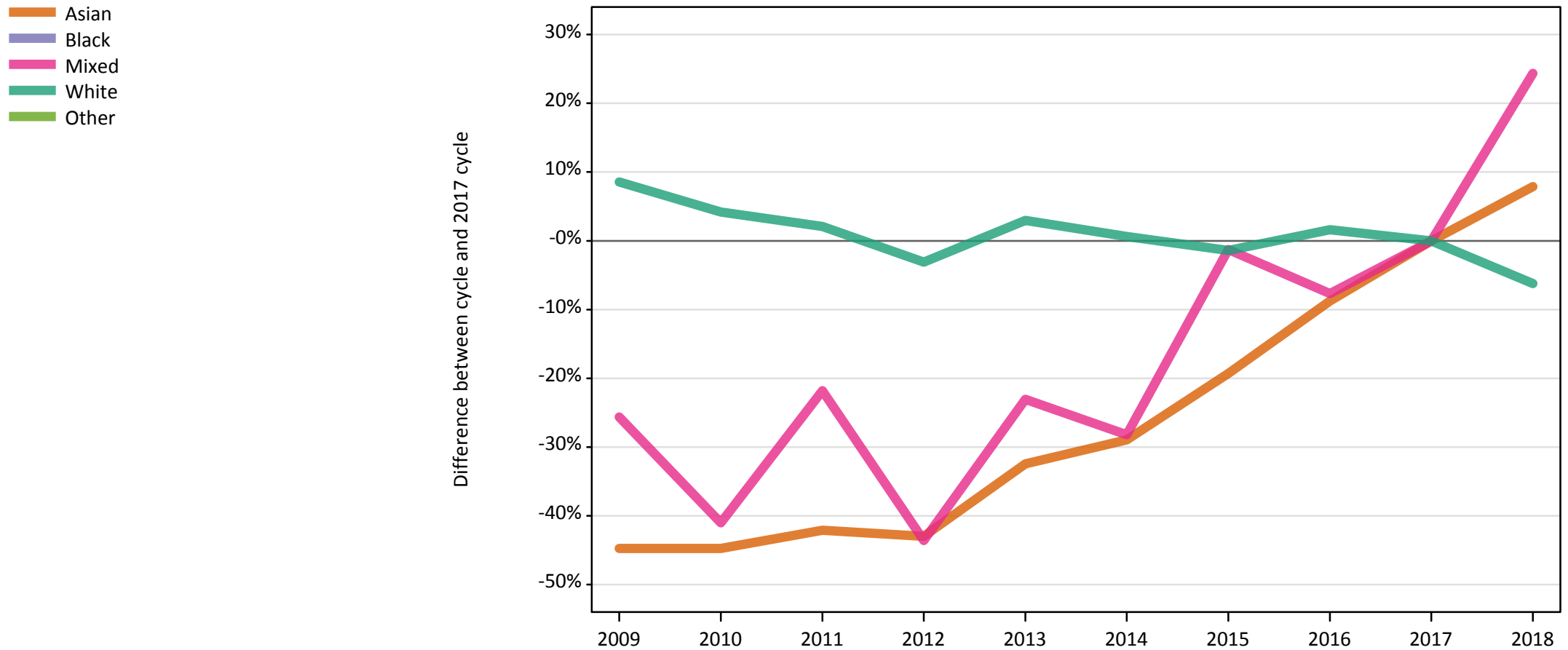
Placed applicants: change relative to 2017 cycle totals

Applicant Status	Ethnic group	2009	2010	2011	2012	2013	2014	2015	2016	2017	2018
Placed	Asian	-44%	-42%	-34%	-34%	-24%	-22%	-13%	3%	0%	6%
	Black	-73%	-67%	-67%	-56%	-40%	-19%	-31%	2%	0%	-4%
	Mixed	-34%	-40%	-27%	-40%	-24%	-30%	-5%	-13%	0%	19%
	White	-6%	-4%	-3%	-10%	-0%	0%	-3%	4%	0%	-5%
	Other	-65%	-30%	-57%	-39%	-52%	-13%	-48%	-13%	0%	-4%

Note: The percentage change is not recorded in the above table for groups with fewer than 10 placed applicants in that cycle or in the 2017 cycle.

E.19 Placed 18 year old applicants from Northern Ireland by ethnic group: 7 days after A level results day

Placed 18 year old applicants: change relative to 2017 cycle totals



Note: The percentage change is not plotted in the above chart for groups with fewer than 30 placed applicants in any one cycle.

E.20 Placed 18 year old applicants from Northern Ireland by ethnic group: 7 days after A level results day

Applicant Status	Ethnic group	2009	2010	2011	2012	2013	2014	2015	2016	2017	2018
Placed	Asian	60	60	70	70	80	80	90	100	110	120
	Black	10	0	10	10	20	10	10	20	20	10
	Mixed	60	50	60	40	60	60	80	70	80	100
	White	8,650	8,310	8,140	7,730	8,210	8,020	7,860	8,100	7,970	7,480
	Other	0	10	0	10	0	10	0	10	10	10

E.21 Placed 18 year old applicants from Northern Ireland by ethnic group: 7 days after A level results day

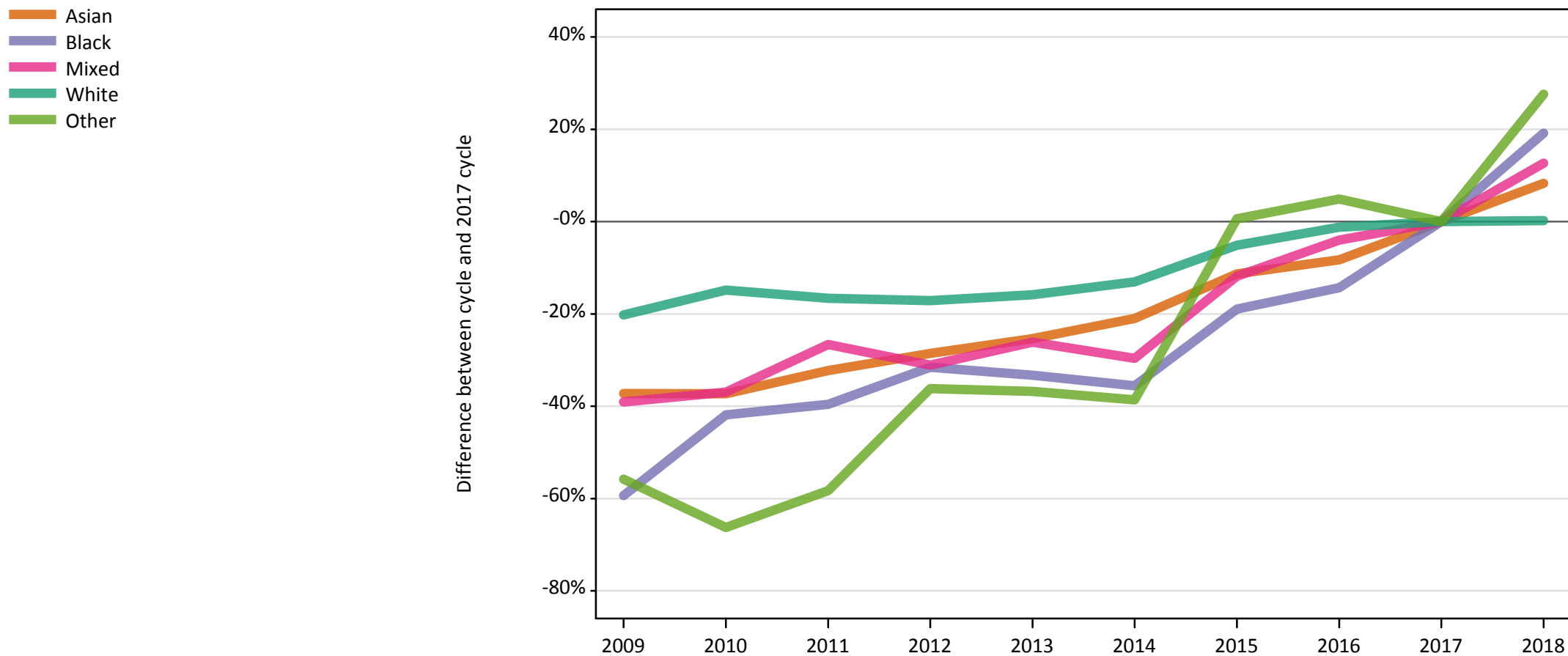
Placed 18 year old applicants: change relative to 2017 cycle totals

Applicant Status	Ethnic group	2009	2010	2011	2012	2013	2014	2015	2016	2017	2018
Placed	Asian	-45%	-45%	-42%	-43%	-32%	-29%	-19%	-9%	0%	8%
	Black	-67%		-56%	-61%	-11%	-28%	-33%	0%	0%	-33%
	Mixed	-26%	-41%	-22%	-44%	-23%	-28%	-1%	-8%	0%	24%
	White	9%	4%	2%	-3%	3%	1%	-1%	2%	0%	-6%
	Other		-22%		-44%		22%		11%	0%	44%

Note: The percentage change is not recorded in the above table for groups with fewer than 10 placed applicants in that cycle or in the 2017 cycle.

E.22 Placed applicants from Scotland by ethnic group: 7 days after A level results day

Placed applicants: change relative to 2017 cycle totals



Note: The percentage change is not plotted in the above chart for groups with fewer than 30 placed applicants in any one cycle.

E.23 Placed applicants from Scotland by ethnic group: 7 days after A level results day

Applicant Status	Ethnic group	2009	2010	2011	2012	2013	2014	2015	2016	2017	2018
Placed	Asian	920	920	1,000	1,050	1,100	1,160	1,300	1,350	1,470	1,590
	Black	190	280	290	330	320	310	390	410	480	570
	Mixed	370	380	440	410	440	420	530	580	600	680
	White	24,500	26,160	25,620	25,460	25,850	26,710	29,140	30,350	30,720	30,780
	Other	70	60	70	100	100	100	160	170	160	210

E.24 Placed applicants from Scotland by ethnic group: 7 days after A level results day

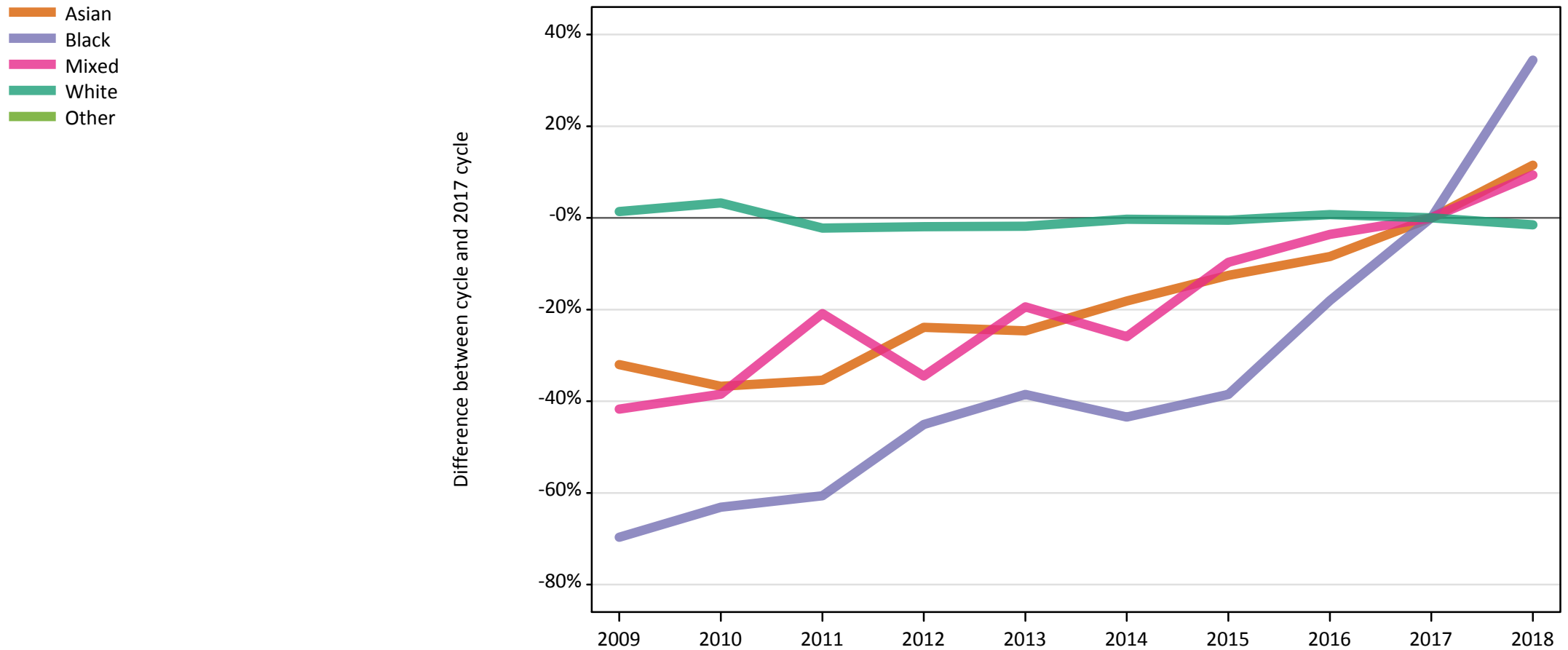
Placed applicants: change relative to 2017 cycle totals

Applicant Status	Ethnic group	2009	2010	2011	2012	2013	2014	2015	2016	2017	2018
Placed	Asian	-37%	-37%	-32%	-29%	-25%	-21%	-11%	-8%	0%	8%
	Black	-59%	-42%	-40%	-32%	-33%	-36%	-19%	-14%	0%	19%
	Mixed	-39%	-37%	-27%	-31%	-26%	-30%	-12%	-4%	0%	13%
	White	-20%	-15%	-17%	-17%	-16%	-13%	-5%	-1%	0%	0%
	Other	-56%	-66%	-58%	-36%	-37%	-39%	1%	5%	0%	28%

Note: The percentage change is not recorded in the above table for groups with fewer than 10 placed applicants in that cycle or in the 2017 cycle.

E.25 Placed 18 year old applicants from Scotland by ethnic group: 7 days after A level results day

Placed 18 year old applicants: change relative to 2017 cycle totals



Note: The percentage change is not plotted in the above chart for groups with fewer than 30 placed applicants in any one cycle.

E.26 Placed 18 year old applicants from Scotland by ethnic group: 7 days after A level results day

Applicant Status	Ethnic group	2009	2010	2011	2012	2013	2014	2015	2016	2017	2018
Placed	Asian	460	430	440	520	510	560	590	620	680	760
	Black	40	50	50	70	80	70	80	100	120	160
	Mixed	160	170	220	180	220	210	250	270	280	300
	White	13,600	13,850	13,120	13,150	13,170	13,380	13,350	13,510	13,410	13,210
	Other	30	20	30	40	40	40	60	60	60	80

E.27 Placed 18 year old applicants from Scotland by ethnic group: 7 days after A level results day

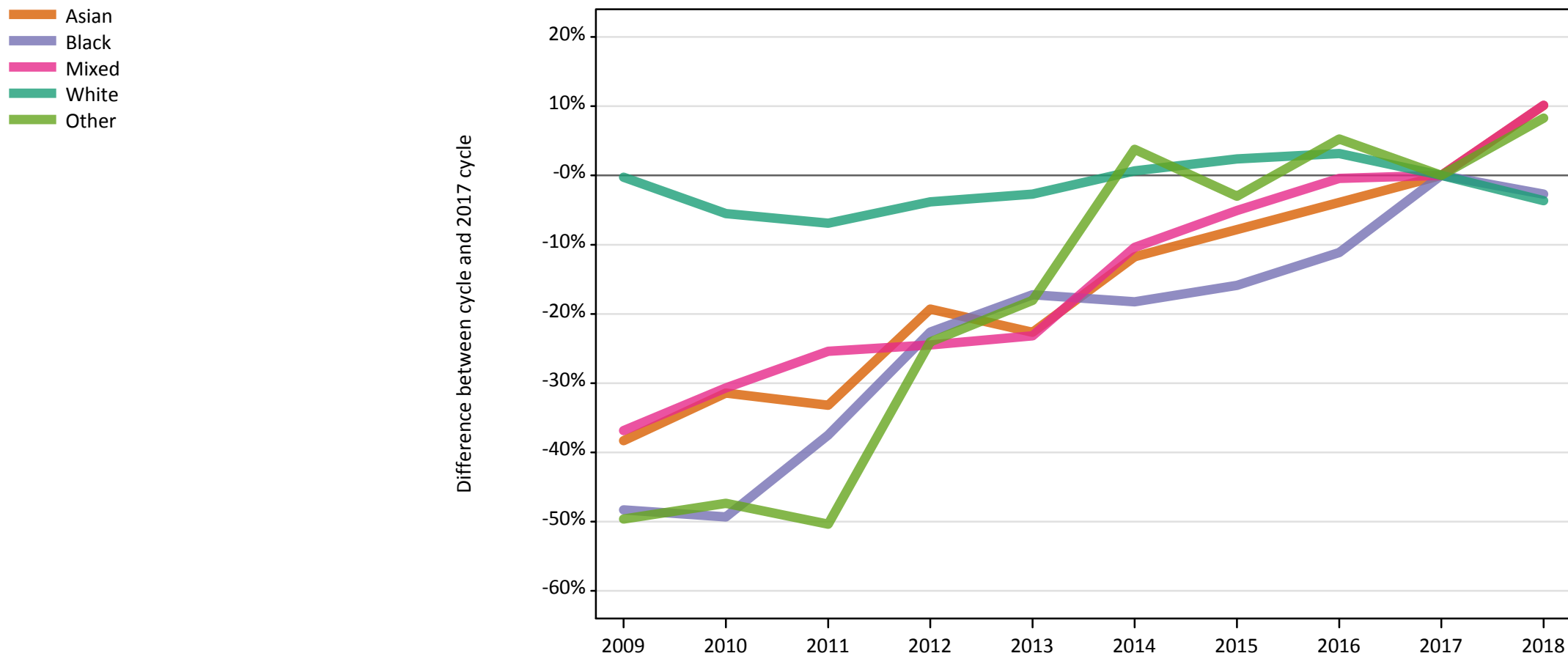
Placed 18 year old applicants: change relative to 2017 cycle totals

Applicant Status	Ethnic group	2009	2010	2011	2012	2013	2014	2015	2016	2017	2018
Placed	Asian	-32%	-37%	-35%	-24%	-25%	-18%	-13%	-8%	0%	12%
	Black	-70%	-63%	-61%	-45%	-39%	-43%	-39%	-18%	0%	34%
	Mixed	-42%	-38%	-21%	-35%	-19%	-26%	-10%	-4%	0%	9%
	White	1%	3%	-2%	-2%	-2%	-0%	-0%	1%	0%	-2%
	Other	-54%	-73%	-44%	-41%	-32%	-41%	3%	7%	0%	31%

Note: The percentage change is not recorded in the above table for groups with fewer than 10 placed applicants in that cycle or in the 2017 cycle.

E.28 Placed applicants from Wales by ethnic group: 7 days after A level results day

Placed applicants: change relative to 2017 cycle totals



Note: The percentage change is not plotted in the above chart for groups with fewer than 30 placed applicants in any one cycle.

E.29 Placed applicants from Wales by ethnic group: 7 days after A level results day

Applicant Status	Ethnic group	2009	2010	2011	2012	2013	2014	2015	2016	2017	2018
Placed	Asian	460	510	500	600	570	650	680	710	740	820
	Black	150	150	190	230	250	240	250	260	300	290
	Mixed	290	310	340	340	350	410	430	450	450	500
	White	16,610	15,740	15,510	16,020	16,200	16,770	17,050	17,190	16,660	16,050
	Other	70	70	70	100	110	140	130	140	130	140

E.30 Placed applicants from Wales by ethnic group: 7 days after A level results day

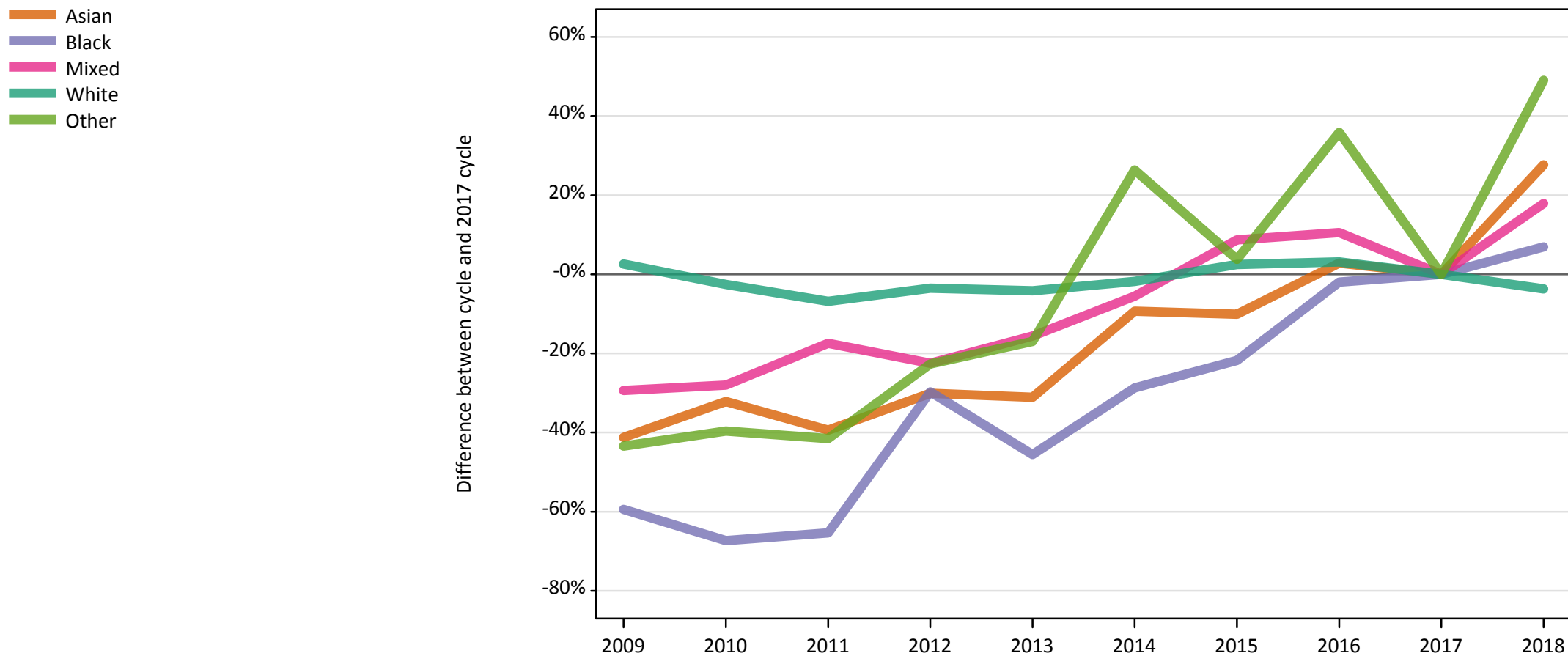
Placed applicants: change relative to 2017 cycle totals

Applicant Status	Ethnic group	2009	2010	2011	2012	2013	2014	2015	2016	2017	2018
Placed	Asian	-38%	-31%	-33%	-19%	-23%	-12%	-8%	-4%	0%	10%
	Black	-48%	-49%	-38%	-23%	-17%	-18%	-16%	-11%	0%	-3%
	Mixed	-37%	-31%	-25%	-25%	-23%	-10%	-5%	-0%	0%	10%
	White	-0%	-6%	-7%	-4%	-3%	1%	2%	3%	0%	-4%
	Other	-50%	-47%	-50%	-24%	-18%	4%	-3%	5%	0%	8%

Note: The percentage change is not recorded in the above table for groups with fewer than 10 placed applicants in that cycle or in the 2017 cycle.

E.31 Placed 18 year old applicants from Wales by ethnic group: 7 days after A level results day

Placed 18 year old applicants: change relative to 2017 cycle totals



Note: The percentage change is not plotted in the above chart for groups with fewer than 30 placed applicants in any one cycle.

E.32 Placed 18 year old applicants from Wales by ethnic group: 7 days after A level results day

Applicant Status	Ethnic group	2009	2010	2011	2012	2013	2014	2015	2016	2017	2018
Placed	Asian	230	260	230	270	270	350	350	400	390	490
	Black	40	30	40	70	60	70	80	100	100	110
	Mixed	150	160	180	170	180	210	240	240	220	260
	White	9,590	9,110	8,700	9,020	8,960	9,180	9,570	9,640	9,340	9,000
	Other	30	30	30	40	40	70	60	70	50	80

E.33 Placed 18 year old applicants from Wales by ethnic group: 7 days after A level results day

Placed 18 year old applicants: change relative to 2017 cycle totals

Applicant Status	Ethnic group	2009	2010	2011	2012	2013	2014	2015	2016	2017	2018
Placed	Asian	-41%	-32%	-39%	-30%	-31%	-9%	-10%	3%	0%	28%
	Black	-59%	-67%	-65%	-30%	-46%	-29%	-22%	-2%	0%	7%
	Mixed	-29%	-28%	-17%	-22%	-16%	-6%	9%	11%	0%	18%
	White	3%	-3%	-7%	-3%	-4%	-2%	2%	3%	0%	-4%
	Other	-43%	-40%	-42%	-23%	-17%	26%	4%	36%	0%	49%

Note: The percentage change is not recorded in the above table for groups with fewer than 10 placed applicants in that cycle or in the 2017 cycle.