

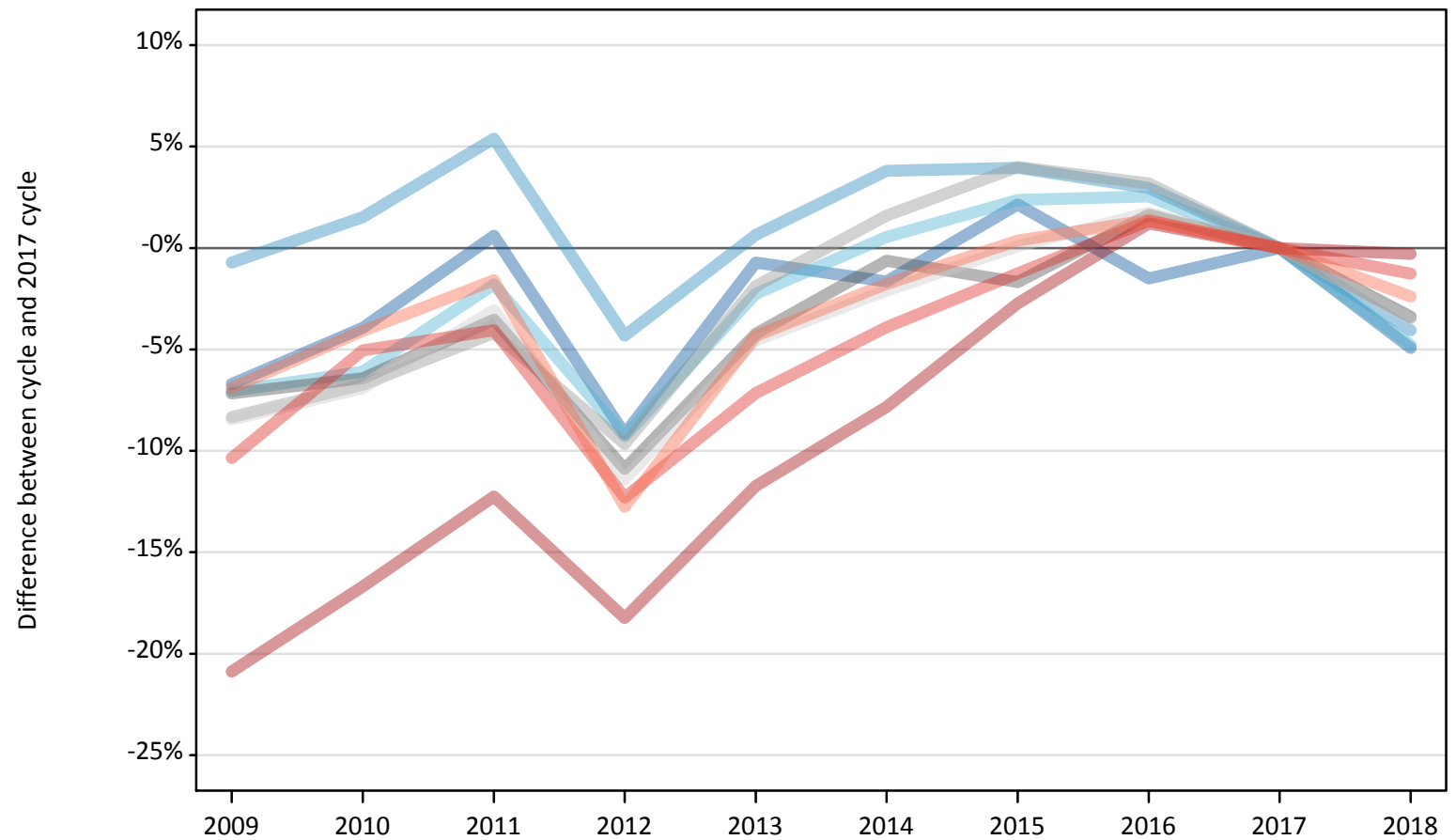
Daily Clearing Analysis: Region

Analysis at 00:05 on Thursday 23 August 2018 (7 days after A level results day)

R.1 Placed applicants by region of domicile: 7 days after A level results day

Placed applicants: change relative to 2017 cycle totals

- North East
- North West
- Yorkshire and The Humber
- East Midlands
- West Midlands
- East of England
- London
- South East
- South West



Note: The percentage change is not plotted in the above chart for groups with fewer than 30 placed applicants in any one cycle.

R.2 Placed applicants by region of domicile: 7 days after A level results day

Applicant Status	Domicile	2009	2010	2011	2012	2013	2014	2015	2016	2017	2018
Placed	North East	14,050	14,470	15,150	13,680	14,950	14,810	15,390	14,840	15,060	14,320
	North West	44,540	45,550	47,280	42,930	45,160	46,580	46,640	46,200	44,870	43,050
	Yorkshire and The Humber	29,470	29,770	31,140	28,760	30,990	31,880	32,460	32,510	31,700	30,190
	East Midlands	25,310	25,510	26,300	24,300	26,110	27,090	26,800	27,710	27,260	26,340
	West Midlands	33,270	33,840	34,770	32,790	35,610	36,870	37,740	37,440	36,290	35,040
	East of England	33,400	33,970	35,370	32,330	34,820	35,720	36,520	37,130	36,490	35,220
	London	53,890	56,750	59,780	55,690	60,130	62,780	66,250	68,940	68,120	67,920
	South East	51,850	54,920	55,490	50,730	53,710	55,580	57,120	58,620	57,840	57,110
	South West	30,150	31,060	31,870	28,250	30,980	31,810	32,500	32,830	32,380	31,610
	(England total)	315,940	325,830	337,140	309,450	332,450	343,110	351,400	356,210	350,000	340,790
	Scotland	26,200	27,910	27,540	27,460	27,940	28,810	31,700	33,060	33,670	34,090
	Northern Ireland	12,550	12,810	13,030	12,140	13,440	13,470	13,160	14,020	13,590	12,960
	Wales	17,700	16,860	16,670	17,360	17,550	18,290	18,630	18,840	18,410	17,930
	UK	372,390	383,410	394,370	366,410	391,380	403,690	414,900	422,130	415,680	405,770

R.3 Placed applicants by region of domicile: 7 days after A level results day

Placed applicants: change relative to 2017 cycle totals

Applicant Status	Domicile	2009	2010	2011	2012	2013	2014	2015	2016	2017	2018
Placed	North East	-7%	-4%	1%	-9%	-1%	-2%	2%	-2%	0%	-5%
	North West	-1%	2%	5%	-4%	1%	4%	4%	3%	0%	-4%
	Yorkshire and The Humber	-7%	-6%	-2%	-9%	-2%	1%	2%	3%	0%	-5%
	East Midlands	-7%	-6%	-4%	-11%	-4%	-1%	-2%	2%	0%	-3%
	West Midlands	-8%	-7%	-4%	-10%	-2%	2%	4%	3%	0%	-3%
	East of England	-8%	-7%	-3%	-11%	-5%	-2%	0%	2%	0%	-3%
	London	-21%	-17%	-12%	-18%	-12%	-8%	-3%	1%	0%	-0%
	South East	-10%	-5%	-4%	-12%	-7%	-4%	-1%	1%	0%	-1%
	South West	-7%	-4%	-2%	-13%	-4%	-2%	0%	1%	0%	-2%
	(England total)	-10%	-7%	-4%	-12%	-5%	-2%	0%	2%	0%	-3%
	Scotland	-22%	-17%	-18%	-18%	-17%	-14%	-6%	-2%	0%	1%
	Northern Ireland	-8%	-6%	-4%	-11%	-1%	-1%	-3%	3%	0%	-5%
	Wales	-4%	-8%	-9%	-6%	-5%	-1%	1%	2%	0%	-3%
	UK	-10%	-8%	-5%	-12%	-6%	-3%	-0%	2%	0%	-2%

Note: The percentage change is not recorded in the above table for groups with fewer than 10 placed applicants in that cycle or in the 2017 cycle.

R.4 Placed applicants by region of domicile: 7 days after A level results day

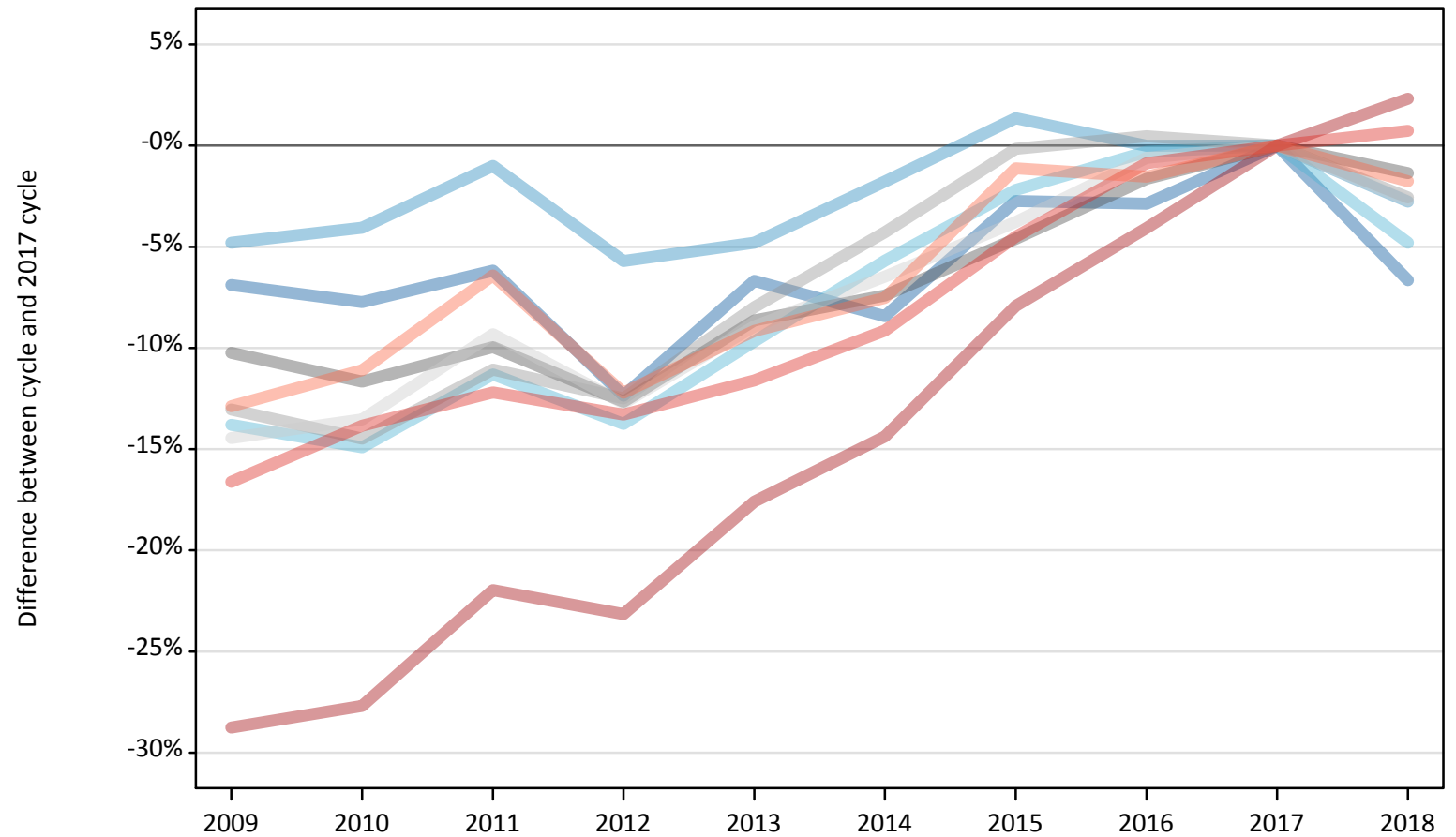
Placed applicants: absolute change relative to 2017 cycle totals

Applicant Status	Domicile	2009	2010	2011	2012	2013	2014	2015	2016	2017	2018
Placed	North East	-1,010	-590	90	-1,380	-110	-250	320	-230	0	-740
	North West	-320	680	2,420	-1,940	290	1,710	1,770	1,330	0	-1,820
	Yorkshire and The Humber	-2,230	-1,930	-570	-2,940	-710	170	750	810	0	-1,520
	East Midlands	-1,950	-1,750	-960	-2,970	-1,150	-170	-460	450	0	-920
	West Midlands	-3,020	-2,450	-1,520	-3,500	-680	580	1,450	1,160	0	-1,240
	East of England	-3,090	-2,520	-1,120	-4,160	-1,670	-770	30	640	0	-1,270
	London	-14,220	-11,370	-8,340	-12,420	-7,990	-5,340	-1,870	830	0	-200
	South East	-5,990	-2,920	-2,350	-7,110	-4,130	-2,260	-720	780	0	-730
	South West	-2,230	-1,320	-510	-4,130	-1,400	-570	120	450	0	-770
	(England total)	-34,070	-24,170	-12,870	-40,550	-17,550	-6,890	1,400	6,200	0	-9,210
	Scotland	-7,470	-5,760	-6,140	-6,220	-5,740	-4,860	-1,970	-610	0	420
	Northern Ireland	-1,040	-780	-560	-1,450	-150	-120	-430	430	0	-630
	Wales	-710	-1,560	-1,740	-1,050	-860	-120	220	430	0	-480
	UK	-43,290	-32,270	-21,300	-49,260	-24,300	-11,990	-780	6,450	0	-9,900

R.5 Placed 18 year old applicants by region of domicile: 7 days after A level results day

Placed 18 year old applicants: change relative to 2017 cycle totals

- North East
- North West
- Yorkshire and The Humber
- East Midlands
- West Midlands
- East of England
- London
- South East
- South West



Note: The percentage change is not plotted in the above chart for groups with fewer than 30 placed applicants in any one cycle.

R.6 Placed 18 year old applicants by region of domicile: 7 days after A level results day

Applicant Status	Domicile	2009	2010	2011	2012	2013	2014	2015	2016	2017	2018
Placed	North East	7,940	7,870	8,000	7,470	7,960	7,810	8,290	8,280	8,530	7,960
	North West	25,100	25,290	26,100	24,860	25,100	25,890	26,720	26,360	26,360	25,630
	Yorkshire and The Humber	16,310	16,100	16,780	16,320	17,090	17,850	18,510	18,860	18,920	18,010
	East Midlands	14,480	14,250	14,520	14,090	14,740	14,930	15,380	15,860	16,130	15,910
	West Midlands	18,210	17,900	18,620	18,320	19,260	20,040	20,900	21,030	20,930	20,400
	East of England	19,460	19,660	20,620	19,850	20,710	21,270	21,880	22,600	22,740	22,130
	London	26,610	27,010	29,140	28,700	30,770	31,980	34,390	35,830	37,340	38,210
	South East	29,230	30,200	30,780	30,400	30,990	31,850	33,470	34,750	35,050	35,310
	South West	15,170	15,470	16,290	15,280	15,810	16,100	17,210	17,140	17,410	17,100
	(England total)	172,490	173,750	180,850	175,270	182,420	187,710	196,750	200,710	203,410	200,650
	Scotland	14,340	14,560	13,890	13,980	14,060	14,270	14,380	14,630	14,610	14,580
	Northern Ireland	8,800	8,450	8,290	7,860	8,370	8,190	8,060	8,320	8,220	7,740
	Wales	10,090	9,620	9,230	9,600	9,530	9,900	10,330	10,480	10,150	9,990
	UK	205,710	206,380	212,260	206,710	214,380	220,070	229,520	234,150	236,390	232,960

R.7 Placed 18 year old applicants by region of domicile: 7 days after A level results day

Placed 18 year old applicants: change relative to 2017 cycle totals

Applicant Status	Domicile	2009	2010	2011	2012	2013	2014	2015	2016	2017	2018
Placed	North East	-7%	-8%	-6%	-12%	-7%	-8%	-3%	-3%	0%	-7%
	North West	-5%	-4%	-1%	-6%	-5%	-2%	1%	-0%	0%	-3%
	Yorkshire and The Humber	-14%	-15%	-11%	-14%	-10%	-6%	-2%	-0%	0%	-5%
	East Midlands	-10%	-12%	-10%	-13%	-9%	-7%	-5%	-2%	0%	-1%
	West Midlands	-13%	-14%	-11%	-12%	-8%	-4%	-0%	0%	0%	-3%
	East of England	-14%	-14%	-9%	-13%	-9%	-6%	-4%	-1%	0%	-3%
	London	-29%	-28%	-22%	-23%	-18%	-14%	-8%	-4%	0%	2%
	South East	-17%	-14%	-12%	-13%	-12%	-9%	-5%	-1%	0%	1%
	South West	-13%	-11%	-6%	-12%	-9%	-8%	-1%	-2%	0%	-2%
	(England total)	-15%	-15%	-11%	-14%	-10%	-8%	-3%	-1%	0%	-1%
	Scotland	-2%	-0%	-5%	-4%	-4%	-2%	-2%	0%	0%	-0%
	Northern Ireland	7%	3%	1%	-4%	2%	-0%	-2%	1%	0%	-6%
	Wales	-1%	-5%	-9%	-5%	-6%	-2%	2%	3%	0%	-2%
	UK	-13%	-13%	-10%	-13%	-9%	-7%	-3%	-1%	0%	-1%

Note: The percentage change is not recorded in the above table for groups with fewer than 10 placed applicants in that cycle or in the 2017 cycle.

R.8 Placed 18 year old applicants by region of domicile: 7 days after A level results day

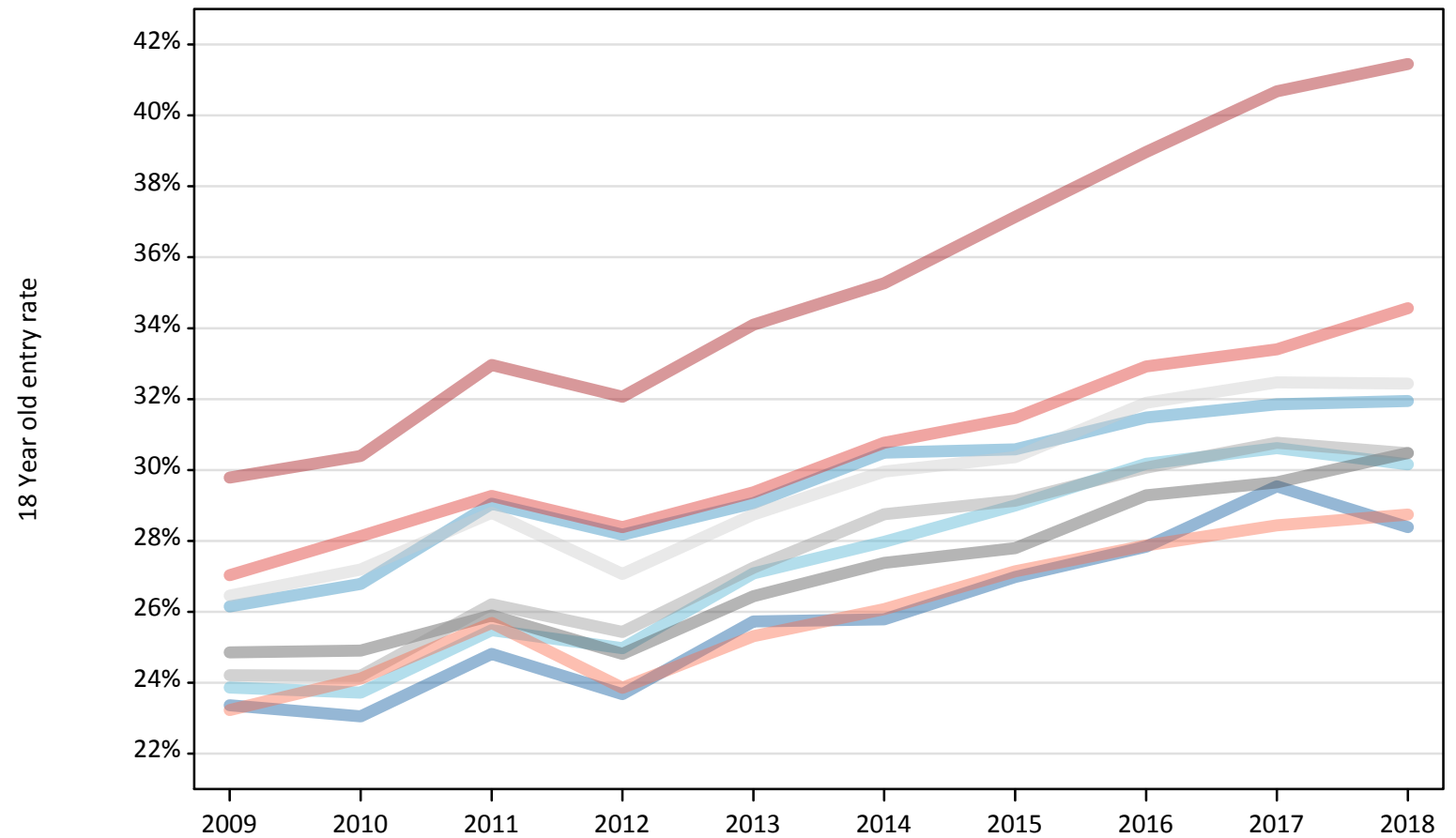
Placed 18 year old applicants: absolute change relative to 2017 cycle totals

Applicant Status	Domicile	2009	2010	2011	2012	2013	2014	2015	2016	2017	2018
Placed	North East	-590	-660	-530	-1,050	-570	-720	-230	-240	0	-570
	North West	-1,260	-1,070	-260	-1,500	-1,260	-470	360	0	0	-730
	Yorkshire and The Humber	-2,610	-2,820	-2,140	-2,600	-1,830	-1,080	-420	-60	0	-910
	East Midlands	-1,650	-1,880	-1,610	-2,040	-1,390	-1,190	-740	-260	0	-220
	West Midlands	-2,730	-3,030	-2,320	-2,610	-1,670	-900	-30	100	0	-540
	East of England	-3,280	-3,080	-2,120	-2,890	-2,030	-1,470	-860	-140	0	-610
	London	-10,740	-10,340	-8,200	-8,650	-6,570	-5,370	-2,960	-1,520	0	870
	South East	-5,820	-4,850	-4,280	-4,660	-4,070	-3,200	-1,580	-310	0	260
	South West	-2,240	-1,930	-1,120	-2,130	-1,590	-1,310	-200	-270	0	-310
	(England total)	-30,920	-29,660	-22,560	-28,140	-20,990	-15,700	-6,660	-2,700	0	-2,760
	Scotland	-270	-50	-710	-630	-540	-330	-230	30	0	-30
	Northern Ireland	580	220	70	-360	150	-30	-160	100	0	-490
	Wales	-60	-530	-920	-550	-620	-250	180	330	0	-160
	UK	-30,680	-30,010	-24,130	-29,670	-22,000	-16,320	-6,870	-2,240	0	-3,430

R.9 Placed 18 year old applicants by region of domicile: 7 days after A level results day

Placed 18 year old applicants: entry rate

- North East
- North West
- Yorkshire and The Humber
- East Midlands
- West Midlands
- East of England
- London
- South East
- South West



R.10 Placed 18 year old applicants by region of domicile: 7 days after A level results day

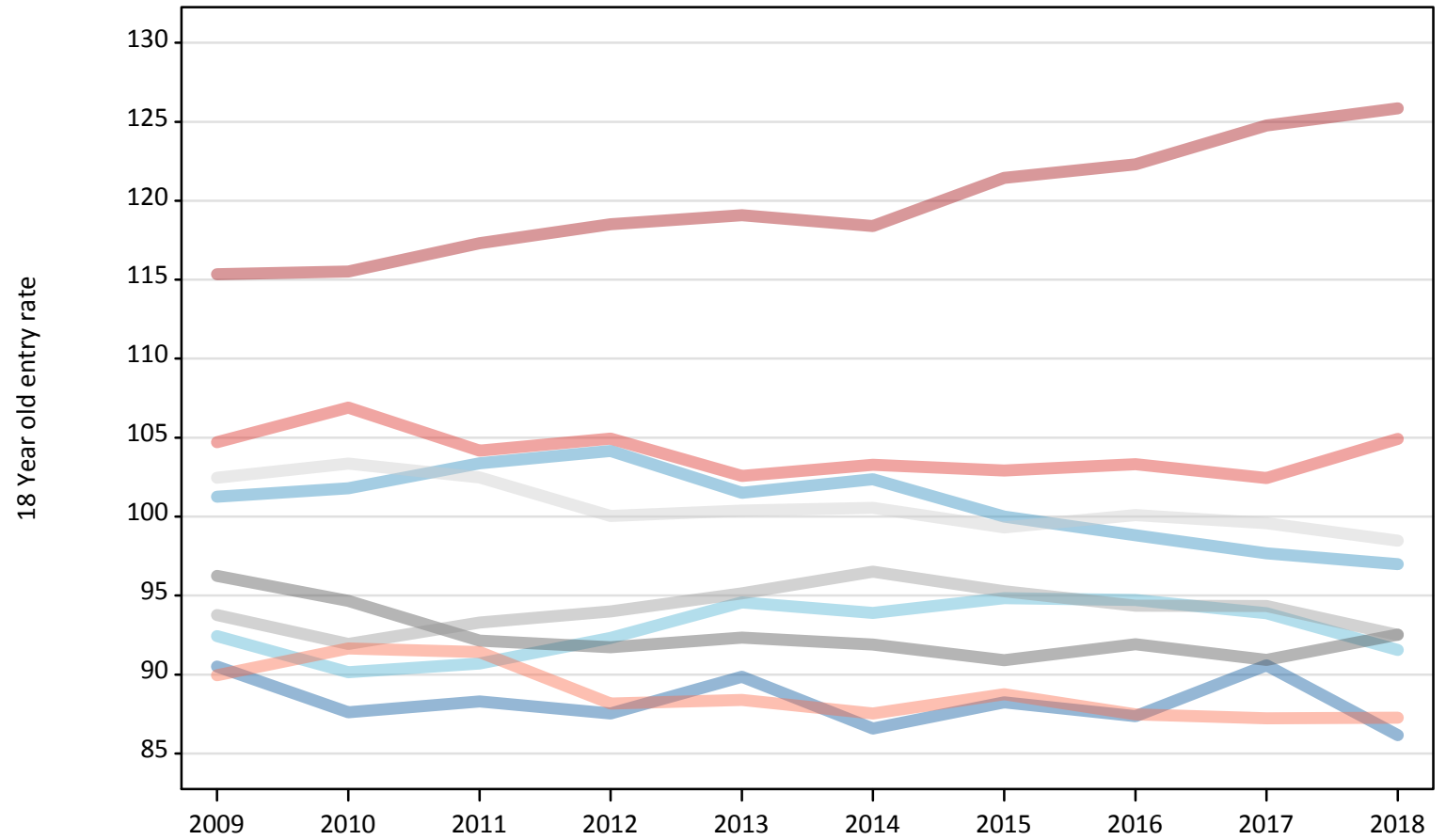
Placed 18 year old applicants: entry rate

Applicant Status	Domicile	2009	2010	2011	2012	2013	2014	2015	2016	2017	2018
Placed	North East	23.4%	23.1%	24.8%	23.7%	25.7%	25.8%	27.0%	27.8%	29.5%	28.4%
	North West	26.1%	26.8%	29.0%	28.2%	29.1%	30.5%	30.6%	31.5%	31.8%	31.9%
	Yorkshire and The Humber	23.9%	23.7%	25.5%	25.0%	27.1%	28.0%	29.0%	30.2%	30.6%	30.2%
	East Midlands	24.9%	24.9%	25.9%	24.8%	26.4%	27.4%	27.8%	29.3%	29.7%	30.5%
	West Midlands	24.2%	24.2%	26.2%	25.4%	27.2%	28.8%	29.1%	30.1%	30.8%	30.5%
	East of England	26.5%	27.2%	28.8%	27.1%	28.7%	30.0%	30.4%	31.9%	32.5%	32.4%
	London	29.8%	30.4%	33.0%	32.1%	34.1%	35.3%	37.1%	39.0%	40.7%	41.5%
	South East	27.0%	28.1%	29.3%	28.4%	29.4%	30.8%	31.5%	32.9%	33.4%	34.6%
	South West	23.2%	24.1%	25.7%	23.9%	25.3%	26.1%	27.1%	27.9%	28.4%	28.7%
	(England total)	25.8%	26.3%	28.1%	27.1%	28.6%	29.8%	30.6%	31.9%	32.6%	32.9%
	Scotland	22.1%	22.8%	22.1%	22.6%	22.8%	23.3%	23.9%	24.9%	25.5%	26.2%
	Northern Ireland	33.9%	33.1%	33.2%	31.3%	34.2%	33.7%	32.5%	34.0%	34.0%	33.4%
	Wales	25.0%	24.1%	23.9%	24.9%	25.2%	26.4%	27.4%	28.9%	28.6%	29.0%
	UK	25.7%	26.1%	27.6%	26.7%	28.2%	29.2%	30.0%	31.2%	31.9%	32.3%

R.11 Placed 18 year old applicants by region of domicile: 7 days after A level results day

Placed 18 year old applicants: entry rates (indexed to 100 = England)

- North East
- North West
- Yorkshire and The Humber
- East Midlands
- West Midlands
- East of England
- London
- South East
- South West



R.12 Placed 18 year old applicants by region of domicile: 7 days after A level results day

Placed 18 year old applicants: entry rate (indexed to 100 = England)

Applicant Status	Domicile	2009	2010	2011	2012	2013	2014	2015	2016	2017	2018	
Placed	North East	90	88	88	88	90	87	88	87	91	86	
	North West	101	102	103	104	102	102	100	99	98	97	
	Yorkshire and The Humber	92	90	91	92	95	94	95	95	94	92	
	East Midlands	96	95	92	92	92	92	91	92	91	93	
	West Midlands	94	92	93	94	95	97	95	94	94	93	
	East of England	102	103	102	100	100	101	99	100	100	98	
	London	115	116	117	119	119	118	121	122	125	126	
	South East	105	107	104	105	103	103	103	103	103	102	105
	South West	90	92	91	88	88	88	89	87	87	87	
	(England total)	100	100	100	100	100	100	100	100	100	100	100