

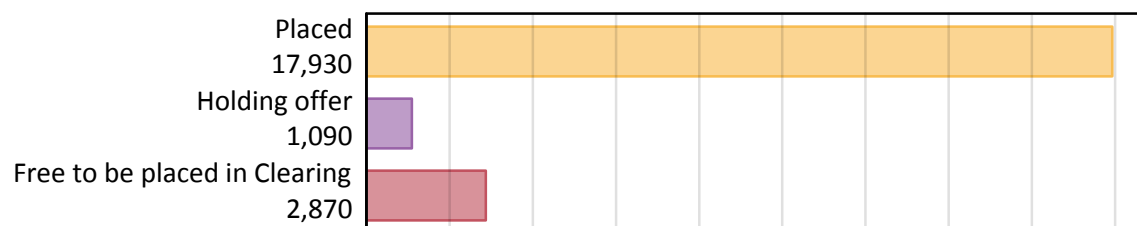
Daily Clearing Analysis: Overview

Analysis at 00:05 on Thursday 23 August 2018 (7 days after A level results day)

A.1 Applicants by type and status from Wales, 2018 cycle

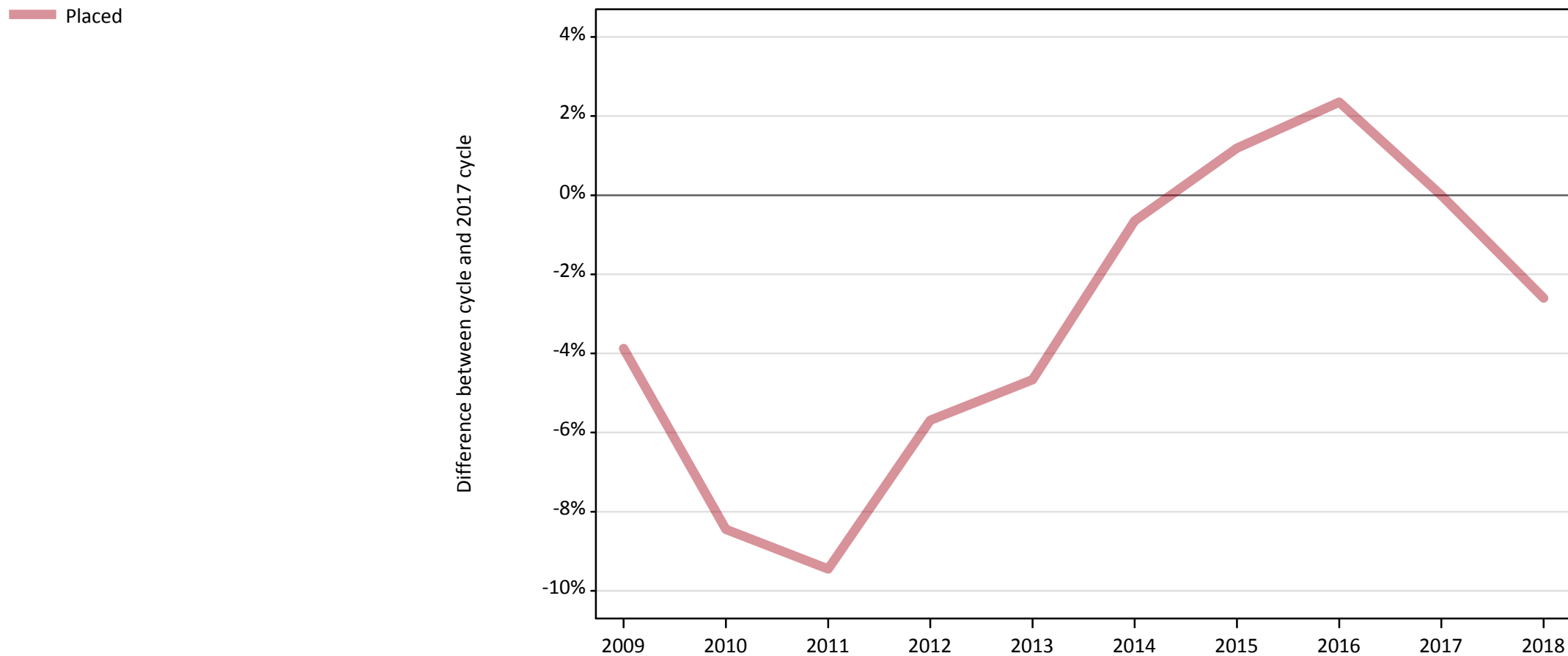
Applicant type	Status	2018
Main scheme	Placed (Clearing)	1,020
	Placed (Adjustment)	30
	Placed (Firm)	15,240
	Placed (Insurance)	800
	Placed (Other)	490
	Holding offer	1,090
	Free to be placed in Clearing	2,870
Direct to Clearing	Placed (Direct to Clearing)	360
	Other (Direct to Clearing)	300
All applicants	Placed	17,930

A.2 Summary of applicants who are placed, holding offers or free to be placed in Clearing (Wales)



A.3 All placed applicants from Wales: 7 days after A level results day

All placed applicants: difference between cycle and 2017 cycle



Note: The percentage change is not plotted in the above chart for groups with fewer than 30 placed applicants in any one cycle.

A.4 All placed applicants from Wales: 7 days after A level results day

All placed applicants: applicants at 7 days after A level results day

Applicant type	Status	2009	2010	2011	2012	2013	2014	2015	2016	2017	2018
All applicants	Placed	17,700	16,860	16,670	17,360	17,550	18,290	18,630	18,840	18,410	17,930

A.5 All placed applicants from Wales: 7 days after A level results day

All placed applicants: difference between cycle and 2017 cycle

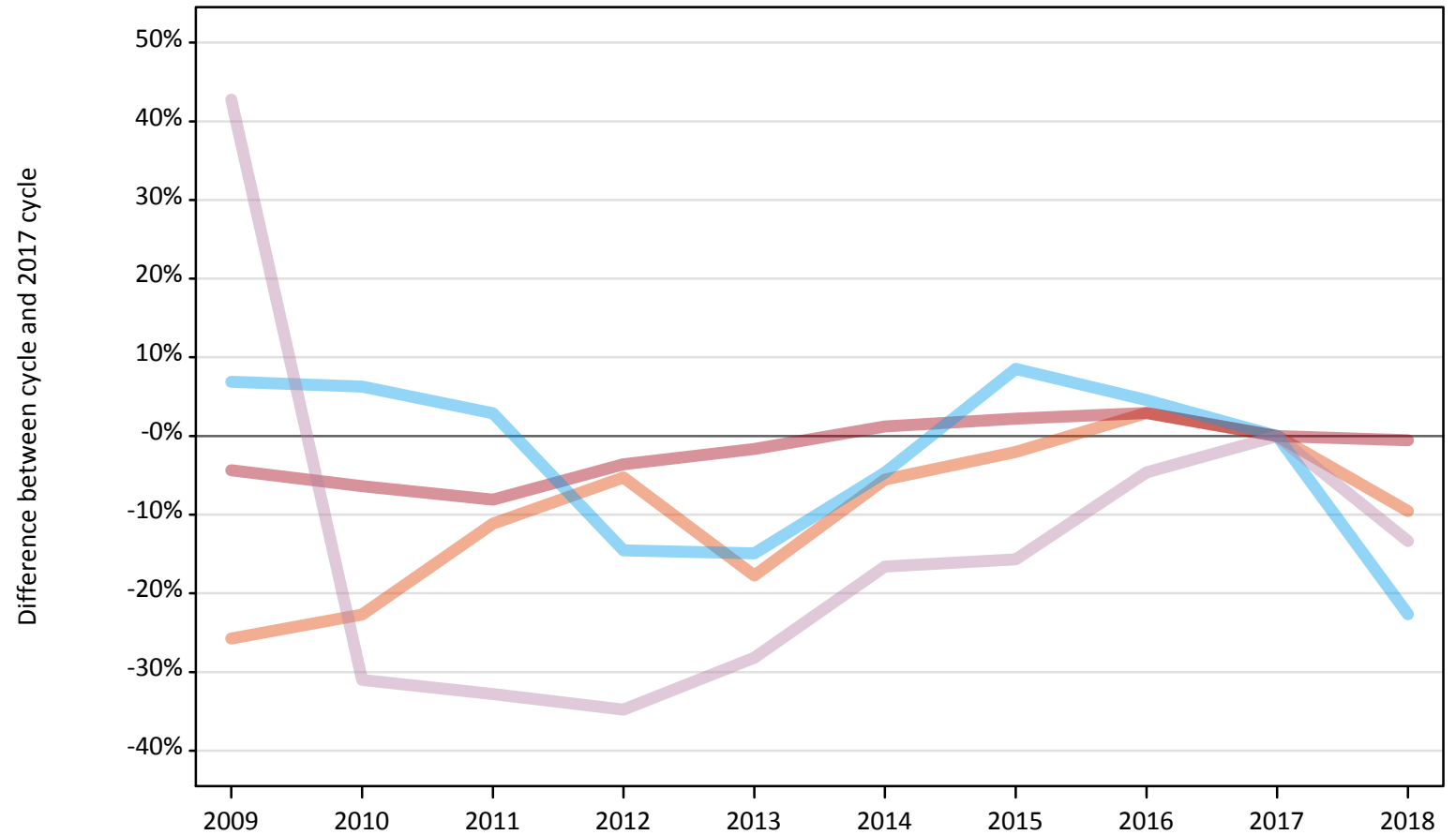
Applicant type	Status	2009	2010	2011	2012	2013	2014	2015	2016	2017	2018
All applicants	Placed	-4%	-8%	-9%	-6%	-5%	-1%	1%	2%	0%	-3%

Note: The percentage change is not recorded in the above table for groups with fewer than 10 placed applicants in that cycle or in the 2017 cycle.

A.6 Placed main scheme applicants from Wales: 7 days after A level results day

All Main scheme placed routes (excluding Adjustment): difference between cycle and 2017 cycle

- Placed (Clearing)
- Placed (Firm)
- Placed (Insurance)
- Placed (Other)



Note: The percentage change is not plotted in the above chart for groups with fewer than 30 placed applicants in any one cycle.

A.7 Placed main scheme applicants from Wales: 7 days after A level results day

All Main scheme placed routes (excluding Adjustment): applicants at 7 days after A level results day

Applicant type	Status	2009	2010	2011	2012	2013	2014	2015	2016	2017	2018
Main scheme	Placed (Clearing)	830	870	1,000	1,060	920	1,060	1,100	1,160	1,120	1,020
	Placed (Firm)	14,650	14,340	14,080	14,770	15,060	15,500	15,650	15,770	15,320	15,240
	Placed (Insurance)	1,100	1,100	1,060	880	880	990	1,120	1,080	1,030	800
	Placed (Other)	800	390	380	370	400	470	470	540	560	490

A.8 Placed main scheme applicants from Wales: 7 days after A level results day

All Main scheme placed routes (excluding Adjustment): difference between cycle and 2017 cycle

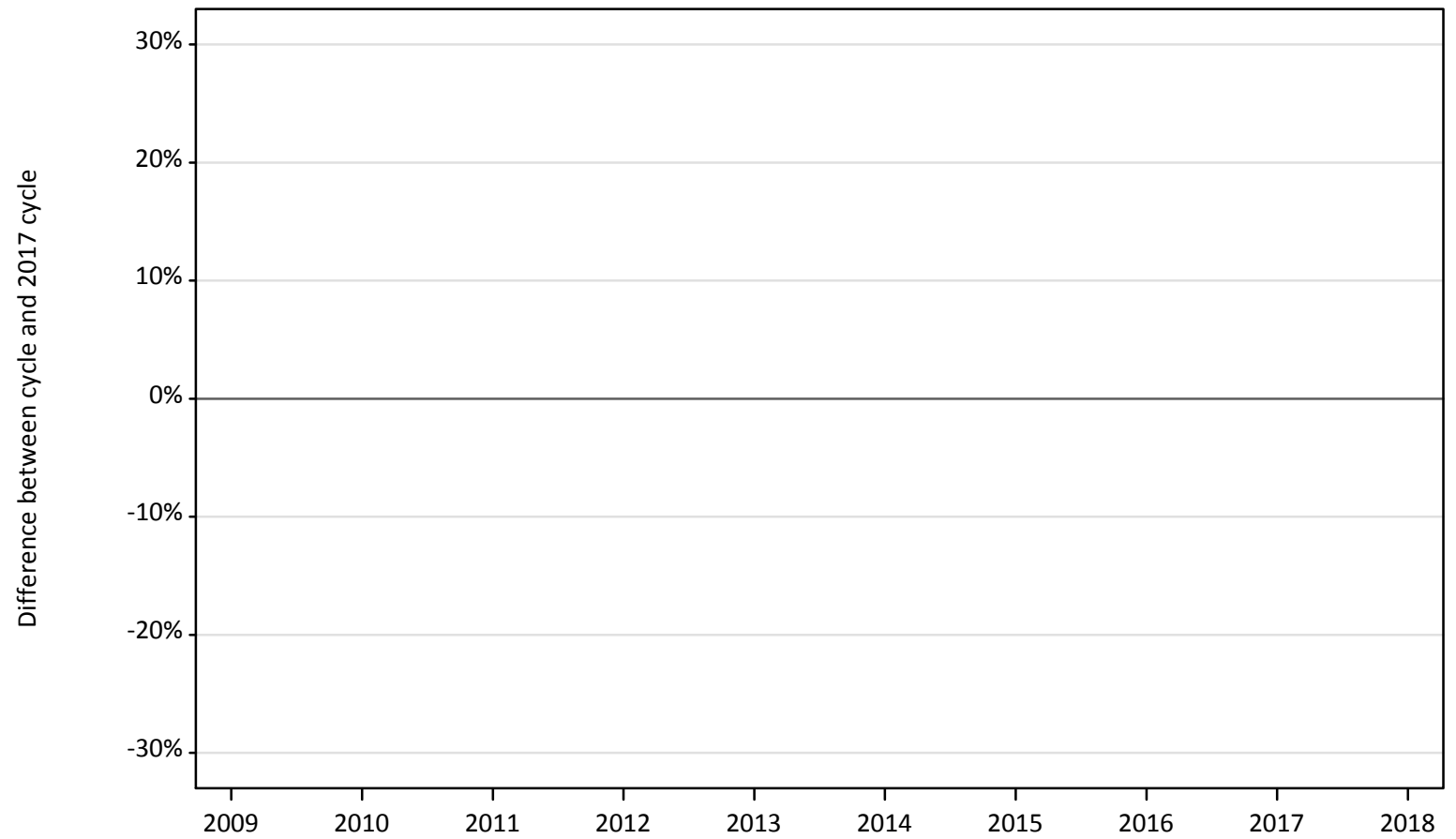
Applicant type	Status	2009	2010	2011	2012	2013	2014	2015	2016	2017	2018
Main scheme	Placed (Clearing)	-26%	-23%	-11%	-5%	-18%	-6%	-2%	3%	0%	-10%
	Placed (Firm)	-4%	-6%	-8%	-4%	-2%	1%	2%	3%	0%	-1%
	Placed (Insurance)	7%	6%	3%	-15%	-15%	-5%	9%	5%	0%	-23%
	Placed (Other)	43%	-31%	-33%	-35%	-28%	-17%	-16%	-5%	0%	-13%

Note: The percentage change is not recorded in the above table for groups with fewer than 10 placed applicants in that cycle or in the 2017 cycle.

A.9 Main scheme applicants placed through adjustment: 7 days after A level results day

Placed through adjustment: difference between cycle and 2017 cycle

Placed (Adjustment)



Note: The percentage change is not plotted in the above chart for groups with fewer than 30 placed applicants in any one cycle.

A.10 Main scheme applicants placed through adjustment: 7 days after A level results day

Placed through adjustment: applicants at 7 days after A level results day

Applicant type	Status	2009	2010	2011	2012	2013	2014	2015	2016	2017	2018
Main scheme	Placed (Adjustment)	20	10	10	30	30	30	30	20	30	30

A.11 Main scheme applicants placed through adjustment: 7 days after A level results day

Placed through adjustment: difference between cycle and 2017 cycle

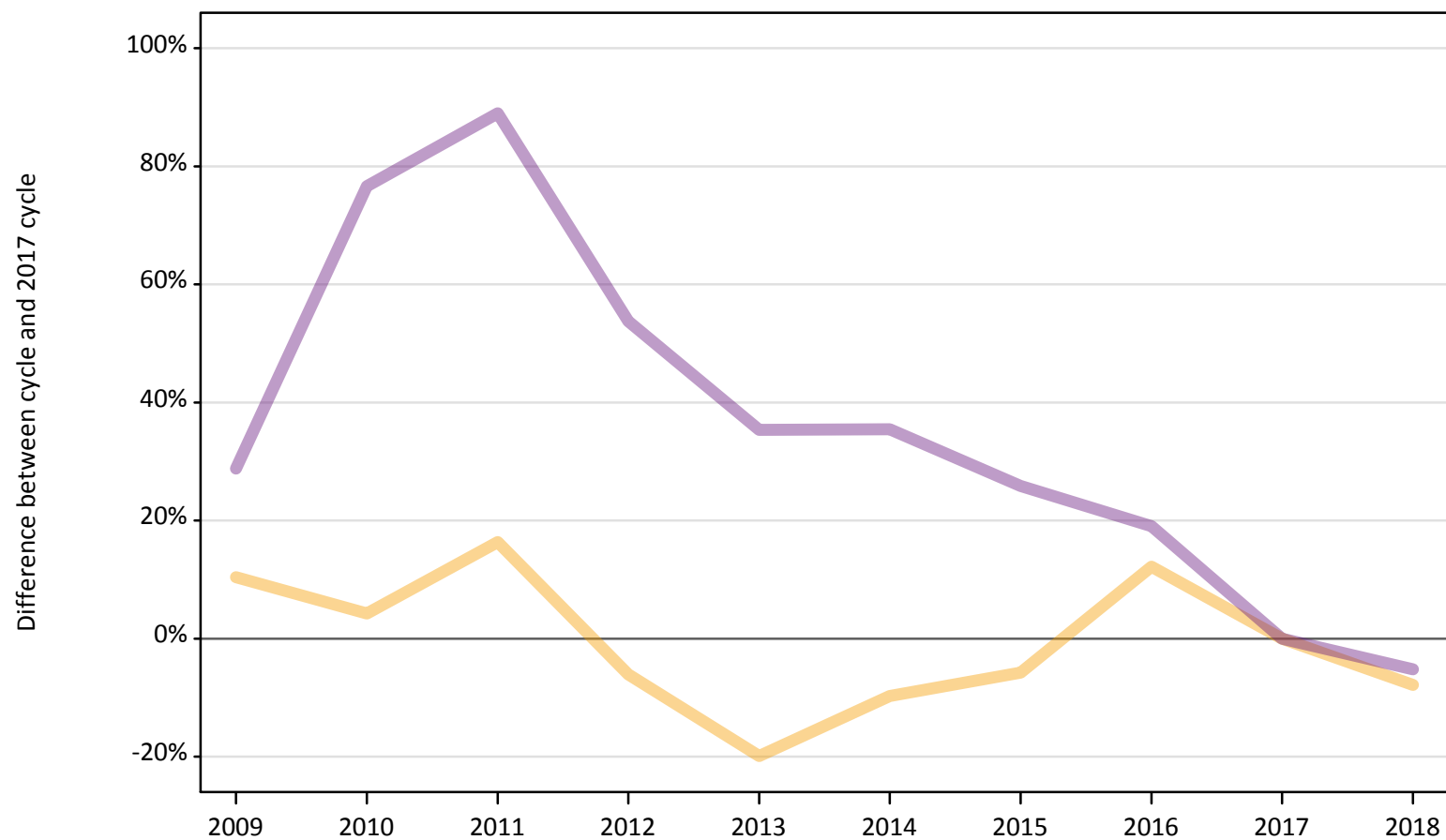
Applicant type	Status	2009	2010	2011	2012	2013	2014	2015	2016	2017	2018
Main scheme	Placed (Adjustment)	-55%	-58%	-70%	-12%	-18%	-3%	-15%	-39%	0%	0%

Note: The percentage change is not recorded in the above table for groups with fewer than 10 placed applicants in that cycle or in the 2017 cycle.

A.12 Main scheme applicants not currently placed from Wales: 7 days after A level results day

Applicants in unplaced states: difference between cycle and 2017 cycle

— Holding offer
— Free to be placed in Clearing



Note: The percentage change is not plotted in the above chart for groups with fewer than 30 unplaced applicants in any one cycle.

A.13 Main scheme applicants not currently placed from Wales: 7 days after A level results day

Applicants in unplaced states: applicants at 7 days after A level results day

Applicant type	Status	2009	2010	2011	2012	2013	2014	2015	2016	2017	2018
Main scheme	Holding offer	1,310	1,230	1,380	1,110	950	1,070	1,110	1,330	1,180	1,090
	Free to be placed in Clearing	3,900	5,340	5,720	4,650	4,090	4,100	3,810	3,600	3,020	2,870

A.14 Main scheme applicants not currently placed from Wales: 7 days after A level results day

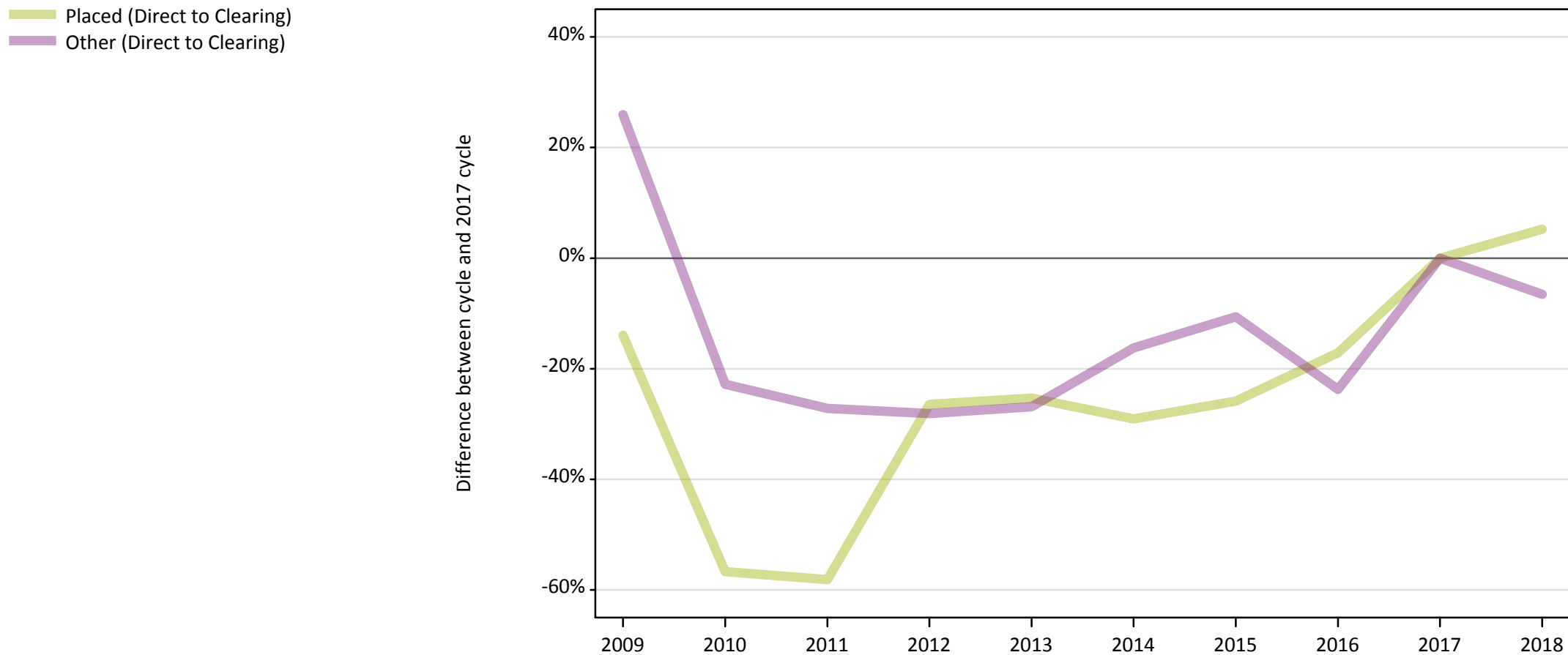
Applicants in unplaced states: difference between cycle and 2017 cycle

Applicant type	Status	2009	2010	2011	2012	2013	2014	2015	2016	2017	2018
Main scheme	Holding offer	10%	4%	16%	-6%	-20%	-10%	-6%	12%	0%	-8%
	Free to be placed in Clearing	29%	77%	89%	54%	35%	35%	26%	19%	0%	-5%

Note: The percentage change is not recorded in the above table for groups with fewer than 10 unplaced applicants in that cycle or in the 2017 cycle.

A.15 Direct to Clearing applicants from Wales: 7 days after A level results day

Direct to Clearing: difference between cycle and 2017 cycle



Note: The percentage change is not plotted in the above chart for groups with fewer than 30 placed applicants in any one cycle.

A.16 Direct to Clearing applicants from Wales: 7 days after A level results day

Direct to Clearing 7 days after A level results day

Applicant type	Status	2009	2010	2011	2012	2013	2014	2015	2016	2017	2018
Direct to Clearing	Placed (Direct to Clearing)	300	150	140	250	260	240	260	290	340	360
	Other (Direct to Clearing)	400	250	230	230	230	270	290	240	320	300

A.17 Direct to Clearing applicants from Wales: 7 days after A level results day

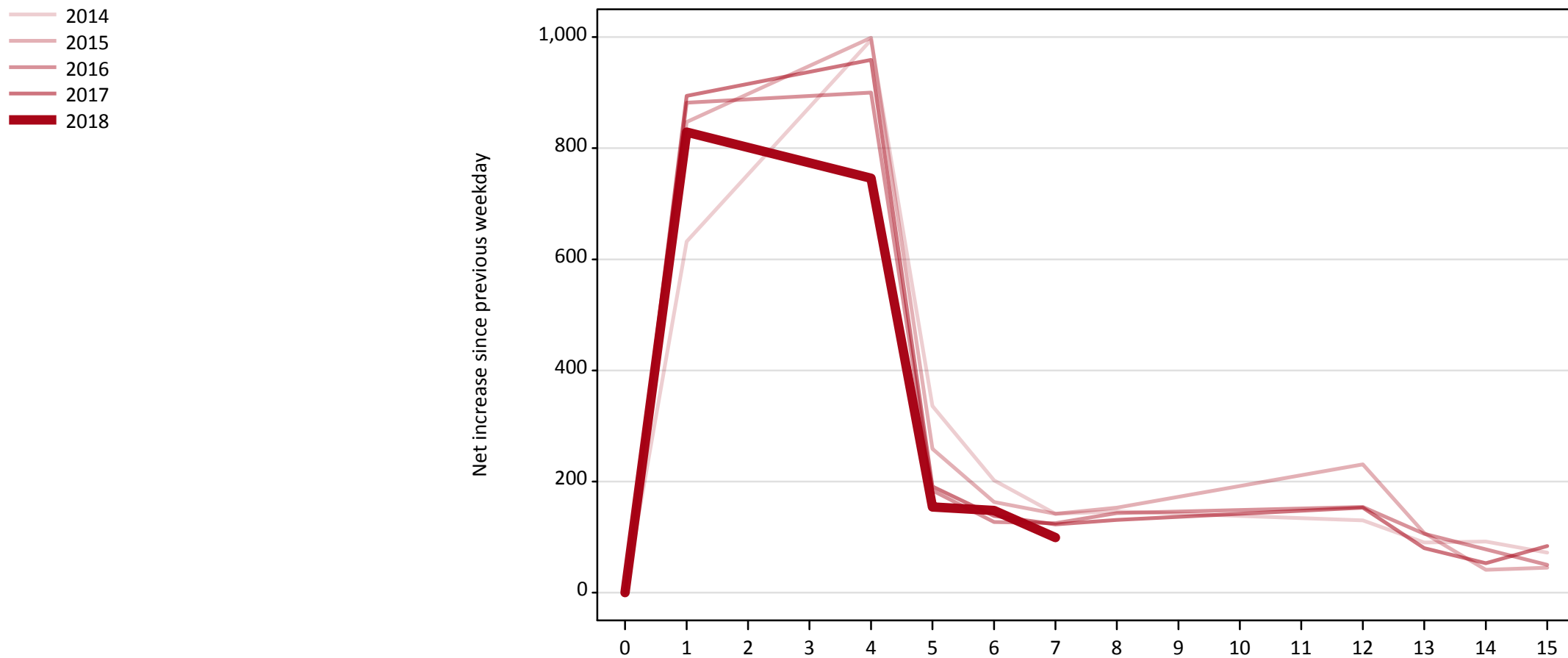
Direct to Clearing: difference between cycle and 2017 cycle

Applicant type	Status	2009	2010	2011	2012	2013	2014	2015	2016	2017	2018
Direct to Clearing	Placed (Direct to Clearing)	-14%	-57%	-58%	-26%	-25%	-29%	-26%	-17%	0%	5%
	Other (Direct to Clearing)	26%	-23%	-27%	-28%	-27%	-16%	-11%	-24%	0%	-7%

Note: The percentage change is not recorded in the above table for groups with fewer than 10 placed applicants in that cycle or in the 2017 cycle.

A.18 All Placed: Daily net change (from Wales)

Net increase since previous weekday (2018 cycle up to 7 days after A level results day)



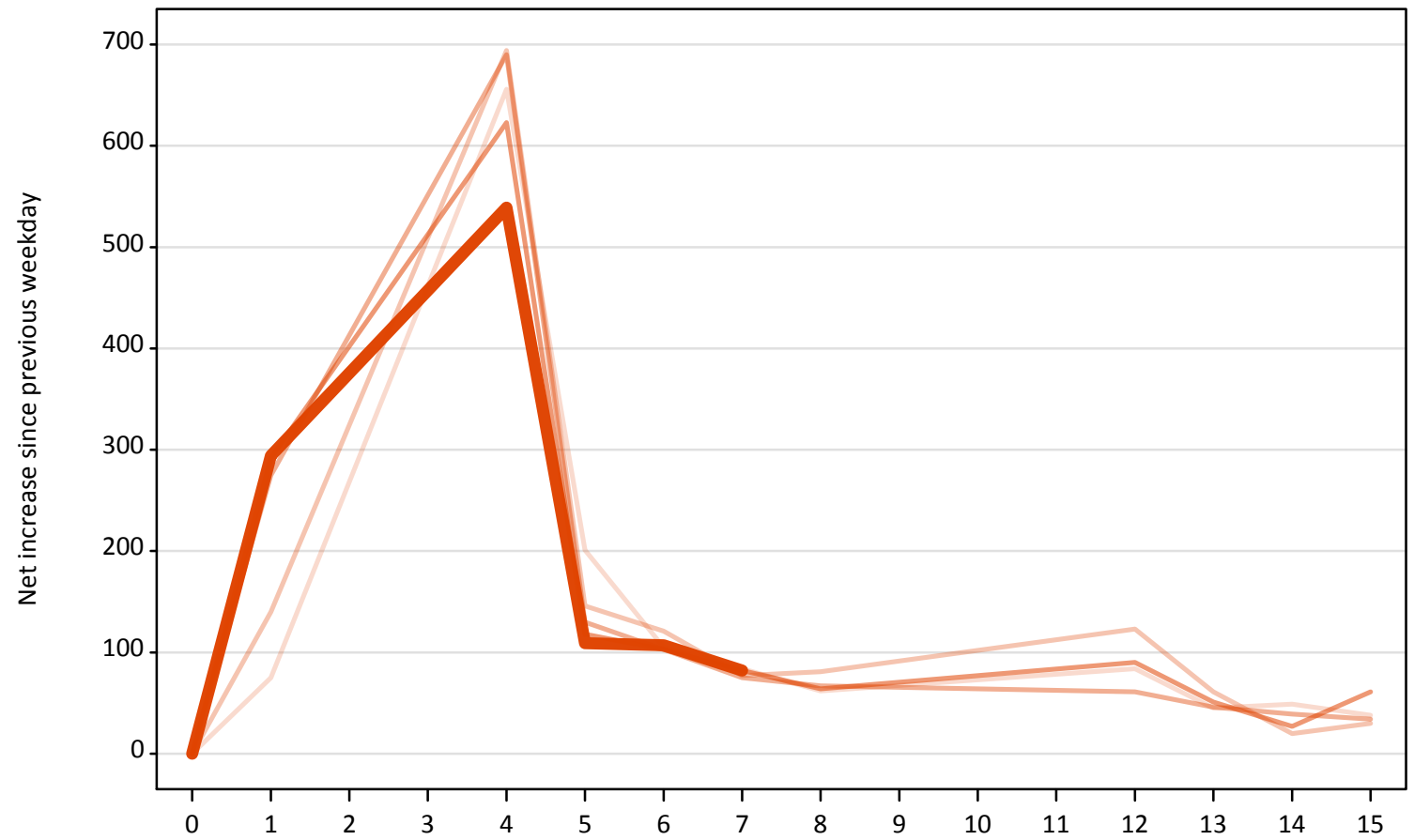
A.19 All Placed: Daily net change (from Wales)

Net increase since previous weekday (2018 cycle up to 7 days after A level results day)

Applicant status, days since A level results day		2014	2015	2016	2017	2018
All Placed	0	0	0	0	0	0
	1	630	850	880	890	830
	4	1,000	1,000	900	960	750
	5	340	260	180	190	150
	6	200	160	130	140	150
	7	140	140	130	120	100
	8	150	150	140	130	
	12	130	230	150	150	
	13	90	110	110	80	
	14	90	40	80	50	
	15	70	50	50	80	

A.20 Placed through Clearing only: Daily net change (from Wales)
Net increase since previous weekday (2018 cycle up to 7 days after A level results day)

- 2014
- 2015
- 2016
- 2017
- 2018**



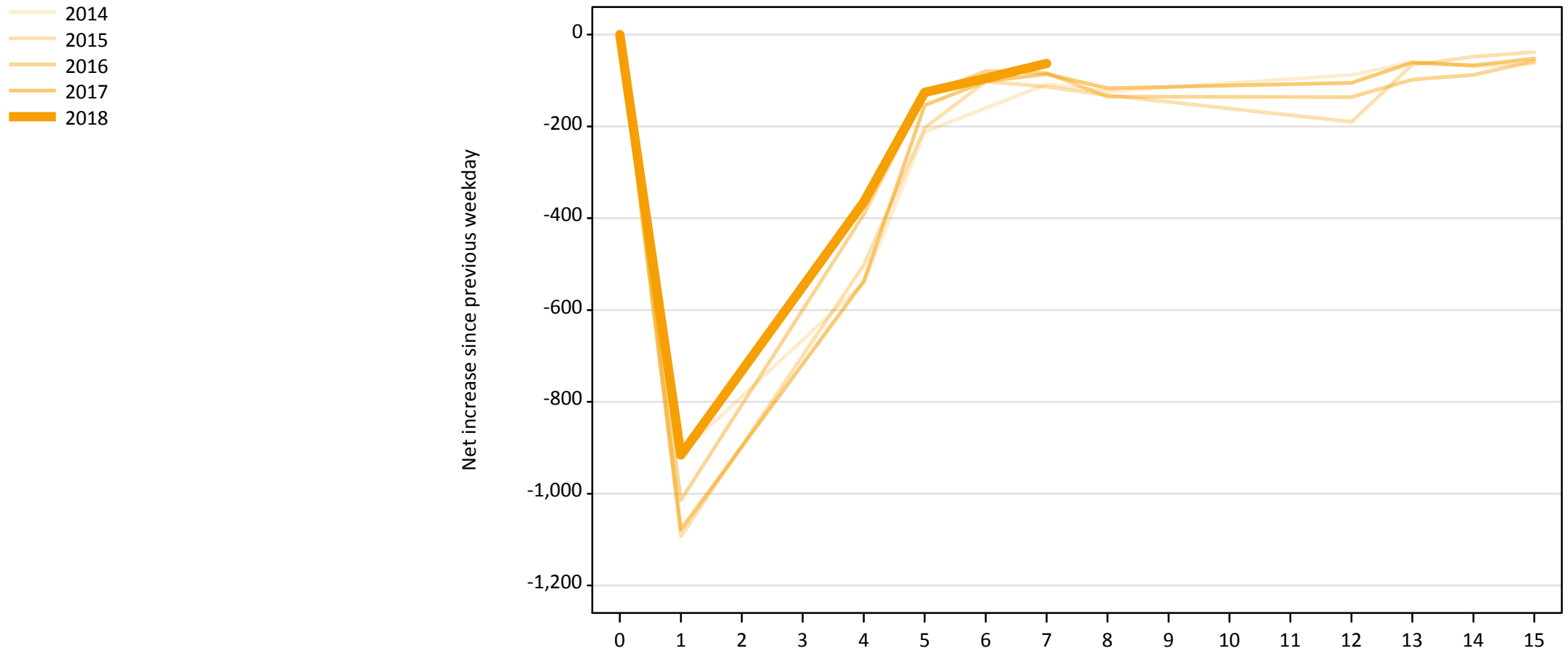
A.21 Placed through Clearing only: Daily net change (from Wales)

Net increase since previous weekday (2018 cycle up to 7 days after A level results day)

Applicant status, days since A level results day		2014	2015	2016	2017	2018
Placed through Clearing only	0	0	0	0	0	0
	1	80	140	280	290	290
	4	660	690	690	620	540
	5	200	150	130	120	110
	6	110	120	100	100	110
	7	80	80	80	80	80
	8	60	80	70	60	
	12	80	120	60	90	
	13	50	60	50	50	
	14	50	20	40	30	
	15	40	30	30	60	

A.22 Holding Offer: Daily net change (from Wales)

Net increase since previous weekday (2018 cycle up to 7 days after A level results day)



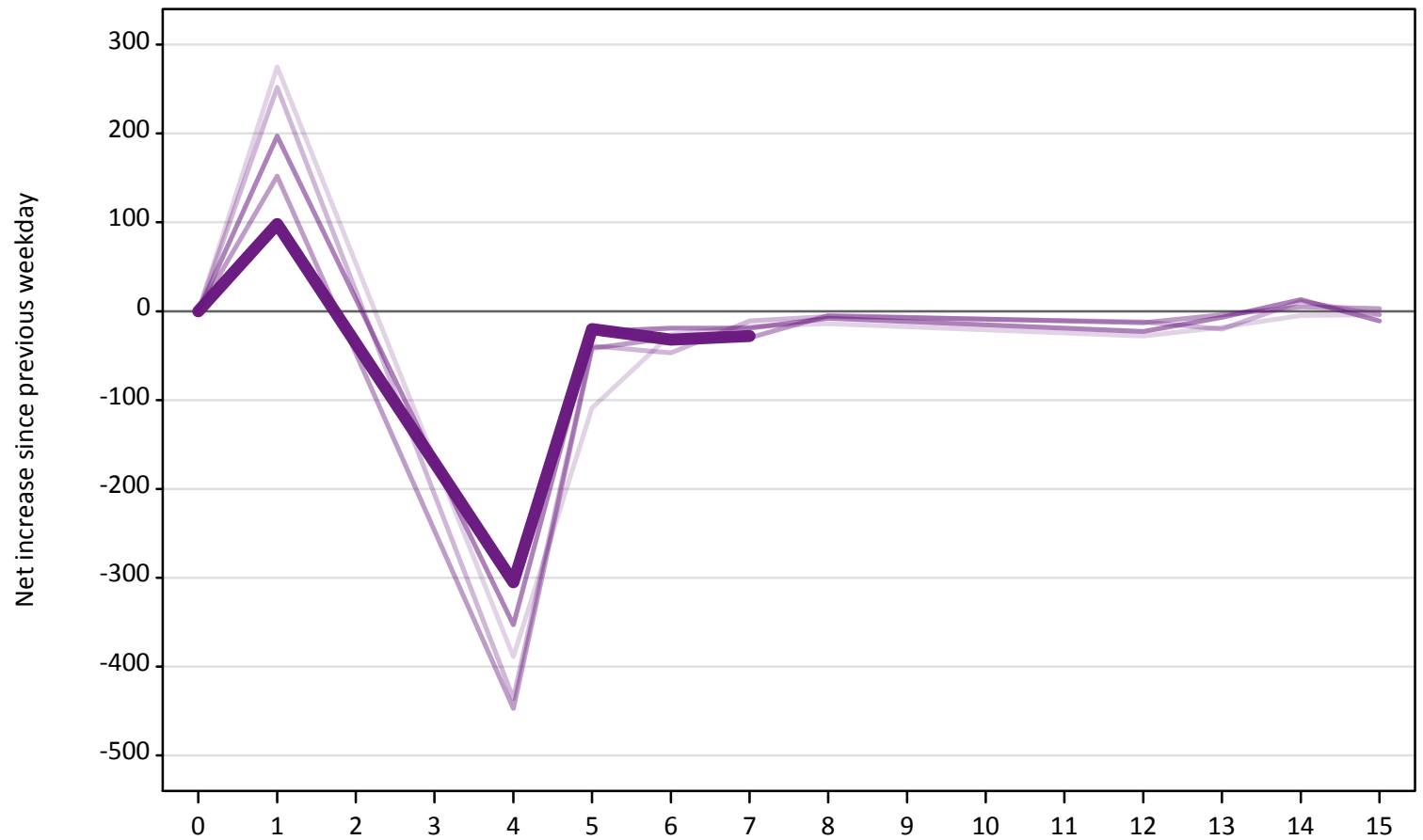
A.23 Holding Offer: Daily net change (from Wales)

Net increase since previous weekday (2018 cycle up to 7 days after A level results day)

Applicant status, days since A level results day		2014	2015	2016	2017	2018
Holding Offer	0	0	0	0	0	0
	1	-910	-1,090	-1,010	-1,080	-920
	4	-540	-500	-390	-540	-370
	5	-210	-200	-130	-150	-130
	6	-160	-100	-80	-100	-100
	7	-110	-110	-80	-90	-60
	8	-120	-130	-140	-120	
	12	-90	-190	-140	-110	
	13	-60	-70	-100	-60	
	14	-70	-50	-90	-70	
	15	-60	-40	-60	-50	

A.24 Free to be placed in Clearing: Daily net change (from Wales)
Net increase since previous weekday (2018 cycle up to 7 days after A level results day)

- 2014
- 2015
- 2016
- 2017
- 2018



A.25 Free to be placed in Clearing: Daily net change (from Wales)

Net increase since previous weekday (2018 cycle up to 7 days after A level results day)

Applicant status, days since A level results day		2014	2015	2016	2017	2018
Free to be placed in Clearing	0	0	0	0	0	0
	1	280	250	150	200	100
	4	-390	-440	-450	-350	-310
	5	-110	-40	-40	-20	-20
	6	-30	-50	-30	-20	-30
	7	-20	-10	-30	-20	-30
	8	-10	-10	-10	-10	
	12	-30	-10	-10	-20	
	13	-20	-20	0	-10	
	14	-10	10	10	10	
	15	0	0	0	-10	