

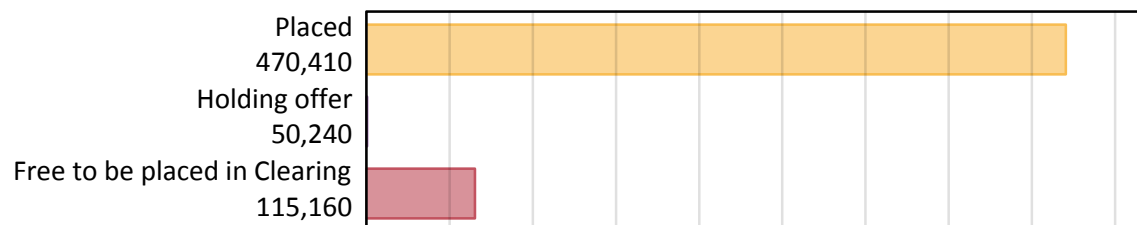
Daily Clearing Analysis: Overview

Analysis at 00:05 on Thursday 23 August 2018 (7 days after A level results day)

A.1 Applicants by type and status from all domiciles, 2018 cycle

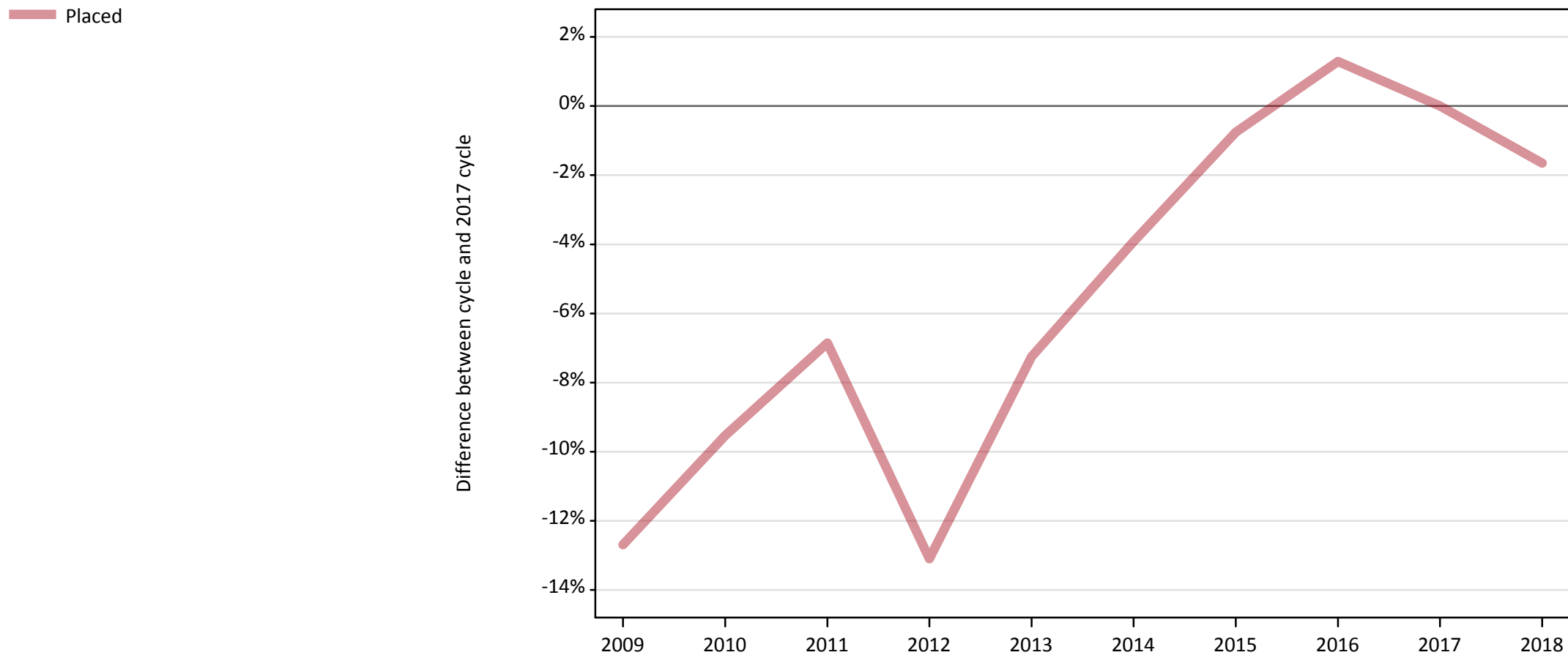
Applicant type	Status	2018
Main scheme	Placed (Clearing)	36,910
	Placed (Adjustment)	910
	Placed (Firm)	377,560
	Placed (Insurance)	32,980
	Placed (Other)	13,450
	Holding offer	50,240
	Free to be placed in Clearing	115,160
Direct to Clearing	Placed (Direct to Clearing)	8,600
	Other (Direct to Clearing)	7,740
All applicants	Placed	470,410

A.2 Summary of applicants who are placed, holding offers or free to be placed in Clearing (all domiciles)



A.3 All placed applicants from all domiciles: 7 days after A level results day

All placed applicants: difference between cycle and 2017 cycle



Note: The percentage change is not plotted in the above chart for groups with fewer than 30 placed applicants in any one cycle.

A.4 All placed applicants from all domiciles: 7 days after A level results day

All placed applicants: applicants at 7 days after A level results day

Applicant type	Status	2009	2010	2011	2012	2013	2014	2015	2016	2017	2018
All applicants	Placed	417,600	432,710	445,500	415,650	443,640	459,550	474,680	484,480	478,310	470,410

A.5 All placed applicants from all domiciles: 7 days after A level results day

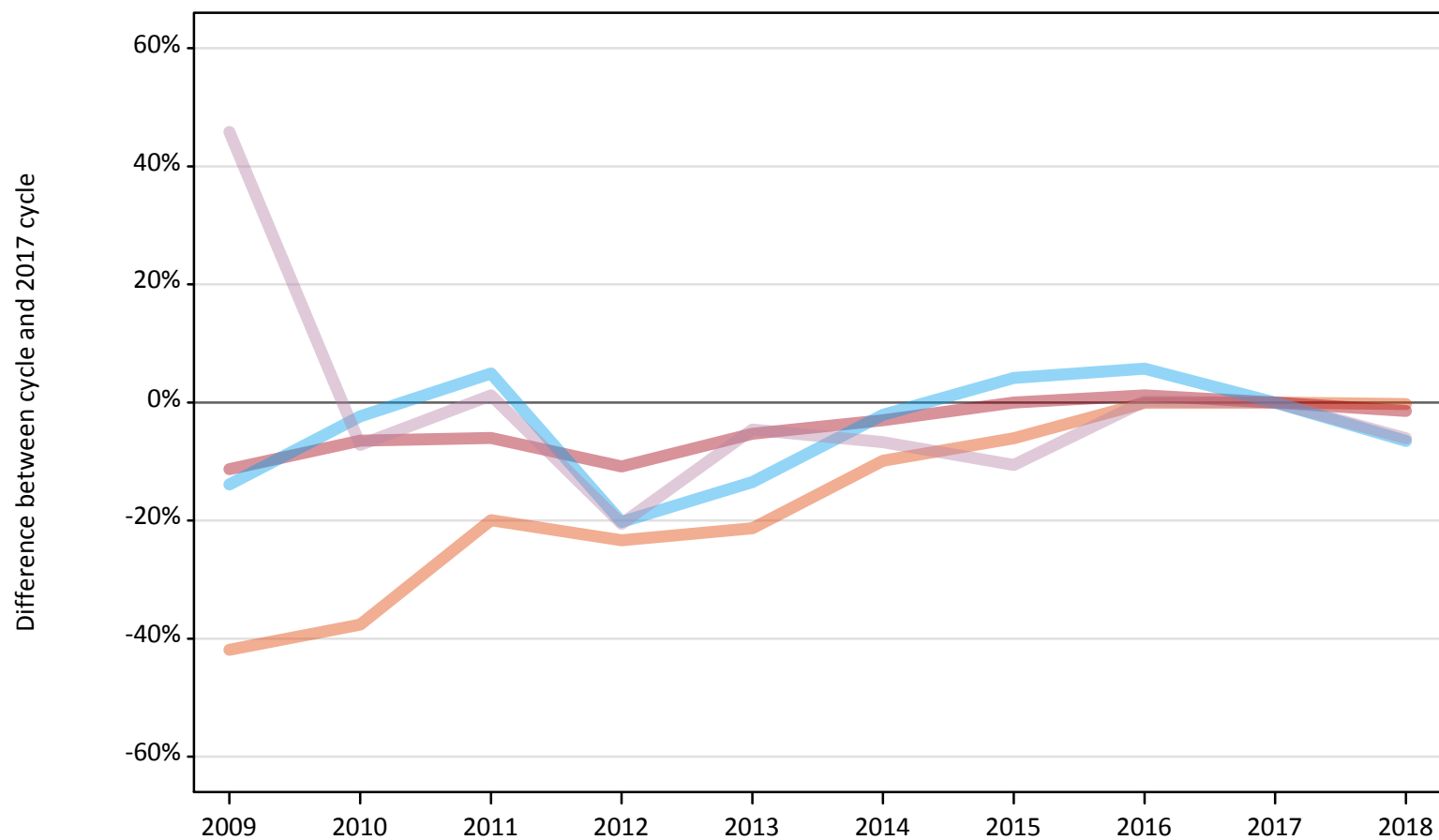
All placed applicants: difference between cycle and 2017 cycle

Applicant type	Status	2009	2010	2011	2012	2013	2014	2015	2016	2017	2018
All applicants	Placed	-13%	-10%	-7%	-13%	-7%	-4%	-1%	1%	0%	-2%

Note: The percentage change is not recorded in the above table for groups with fewer than 10 placed applicants in that cycle or in the 2017 cycle.

A.6 Placed main scheme applicants from all domiciles: 7 days after A level results day
All Main scheme placed routes (excluding Adjustment): difference between cycle and 2017 cycle

- Placed (Clearing)
- Placed (Firm)
- Placed (Insurance)
- Placed (Other)



Note: The percentage change is not plotted in the above chart for groups with fewer than 30 placed applicants in any one cycle.

A.7 Placed main scheme applicants from all domiciles: 7 days after A level results day

All Main scheme placed routes (excluding Adjustment): applicants at 7 days after A level results day

Applicant type	Status	2009	2010	2011	2012	2013	2014	2015	2016	2017	2018
Main scheme	Placed (Clearing)	21,500	23,080	29,640	28,370	29,130	33,350	34,760	36,980	37,010	36,910
	Placed (Firm)	339,720	358,170	360,040	341,530	362,750	371,460	383,020	387,600	383,020	377,560
	Placed (Insurance)	30,370	34,440	36,990	28,130	30,520	34,520	36,730	37,290	35,270	32,980
	Placed (Other)	20,880	13,290	14,490	11,380	13,660	13,360	12,800	14,340	14,320	13,450

A.8 Placed main scheme applicants from all domiciles: 7 days after A level results day

All Main scheme placed routes (excluding Adjustment): difference between cycle and 2017 cycle

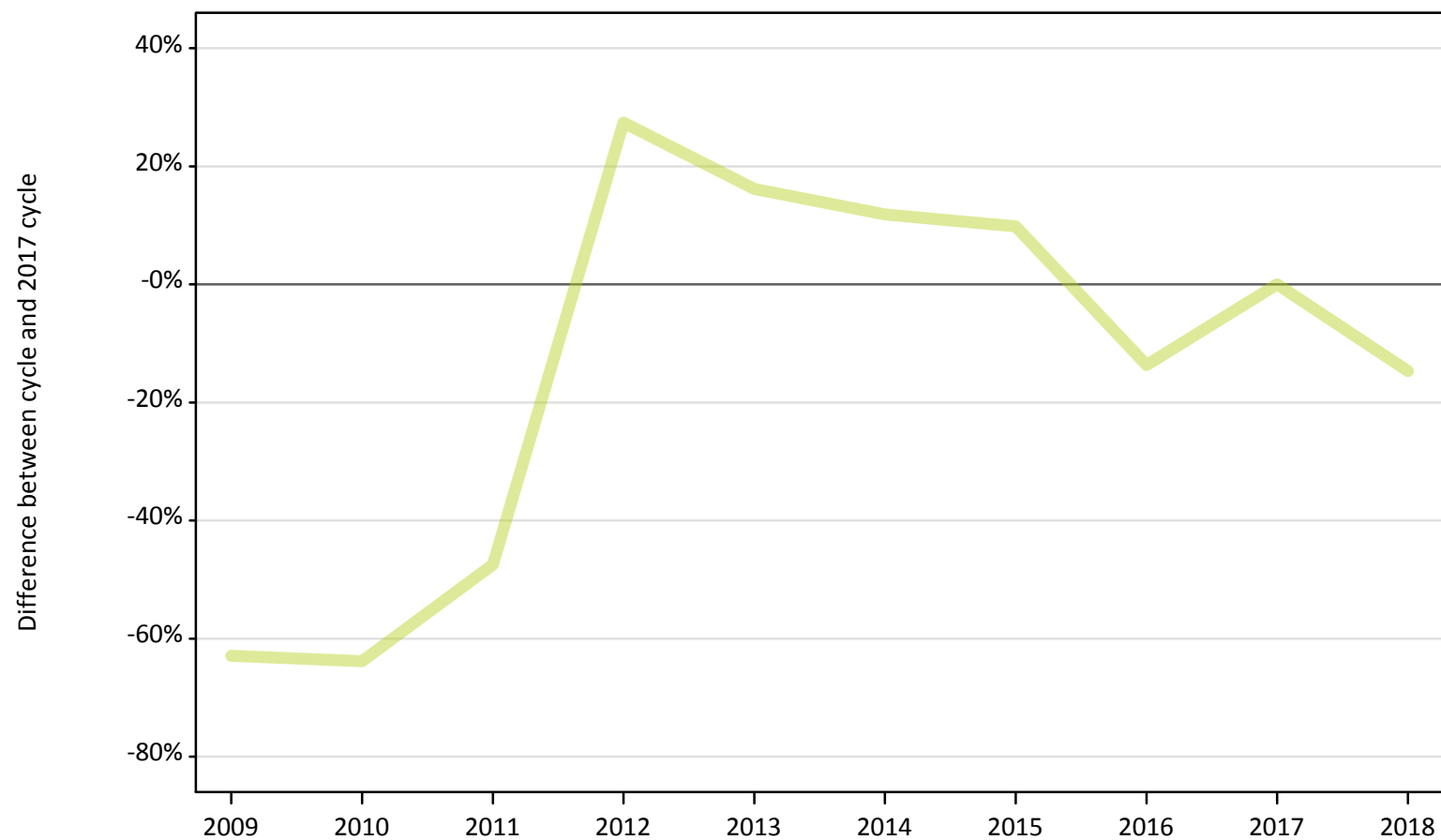
Applicant type	Status	2009	2010	2011	2012	2013	2014	2015	2016	2017	2018
Main scheme	Placed (Clearing)	-42%	-38%	-20%	-23%	-21%	-10%	-6%	-0%	0%	-0%
	Placed (Firm)	-11%	-6%	-6%	-11%	-5%	-3%	0%	1%	0%	-1%
	Placed (Insurance)	-14%	-2%	5%	-20%	-13%	-2%	4%	6%	0%	-7%
	Placed (Other)	46%	-7%	1%	-21%	-5%	-7%	-11%	0%	0%	-6%

Note: The percentage change is not recorded in the above table for groups with fewer than 10 placed applicants in that cycle or in the 2017 cycle.

A.9 Main scheme applicants placed through adjustment: 7 days after A level results day

Placed through adjustment: difference between cycle and 2017 cycle

Placed (Adjustment)



Note: The percentage change is not plotted in the above chart for groups with fewer than 30 placed applicants in any one cycle.

A.10 Main scheme applicants placed through adjustment: 7 days after A level results day

Placed through adjustment: applicants at 7 days after A level results day

Applicant type	Status	2009	2010	2011	2012	2013	2014	2015	2016	2017	2018
Main scheme	Placed (Adjustment)	390	380	560	1,350	1,230	1,190	1,170	920	1,060	910

A.11 Main scheme applicants placed through adjustment: 7 days after A level results day

Placed through adjustment: difference between cycle and 2017 cycle

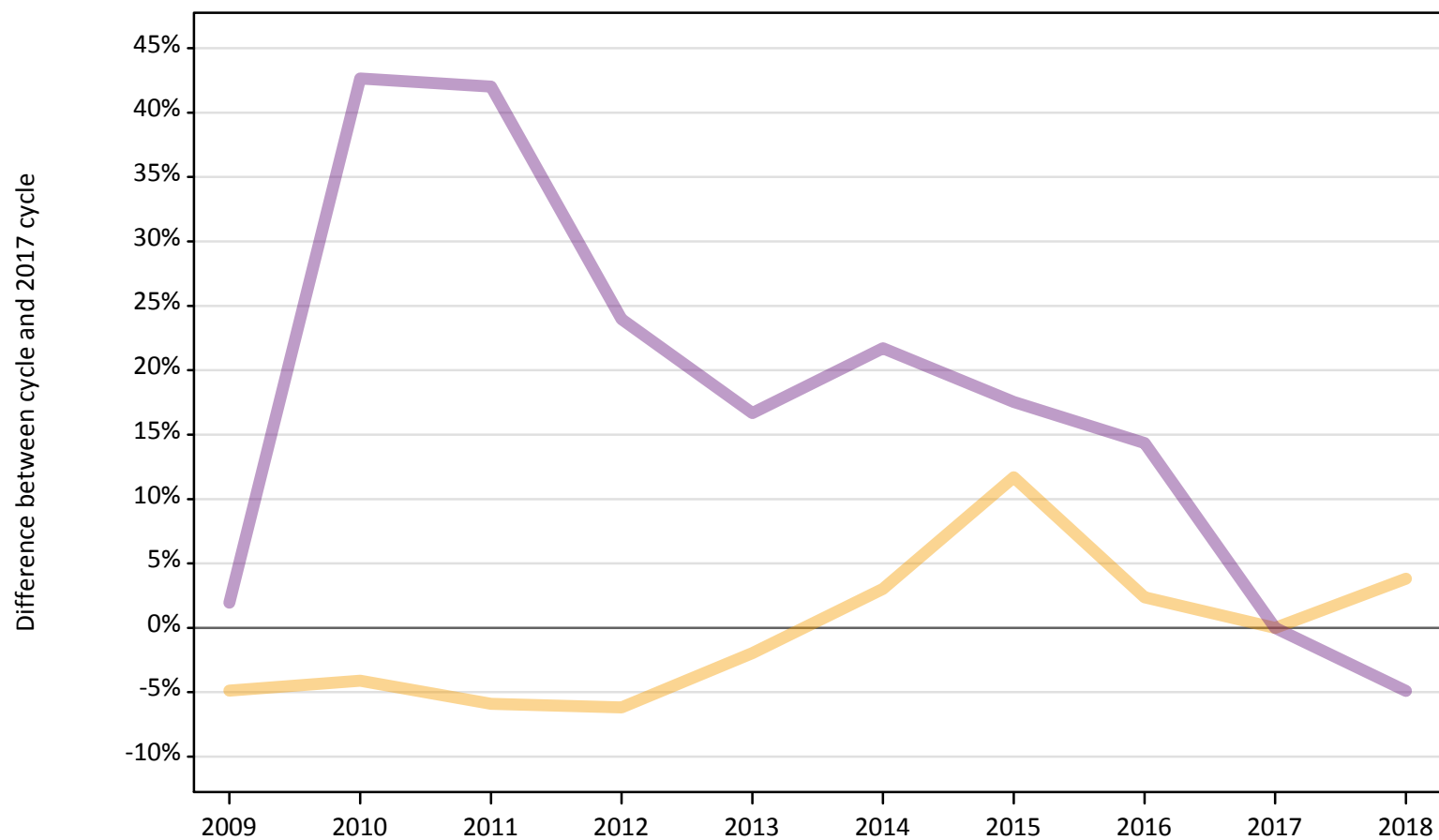
Applicant type	Status	2009	2010	2011	2012	2013	2014	2015	2016	2017	2018
Main scheme	Placed (Adjustment)	-63%	-64%	-47%	27%	16%	12%	10%	-14%	0%	-15%

Note: The percentage change is not recorded in the above table for groups with fewer than 10 placed applicants in that cycle or in the 2017 cycle.

A.12 Main scheme applicants not currently placed from all domiciles: 7 days after A level results day

Applicants in unplaced states: difference between cycle and 2017 cycle

— Holding offer
— Free to be placed in Clearing



Note: The percentage change is not plotted in the above chart for groups with fewer than 30 unplaced applicants in any one cycle.

A.13 Main scheme applicants not currently placed from all domiciles: 7 days after A level results day

Applicants in unplaced states: applicants at 7 days after A level results day

Applicant type	Status	2009	2010	2011	2012	2013	2014	2015	2016	2017	2018
Main scheme	Holding offer	46,040	46,410	45,540	45,410	47,450	49,860	54,050	49,540	48,390	50,240
	Free to be placed in Clearing	123,450	172,730	171,980	150,130	141,280	147,390	142,310	138,450	121,090	115,160

A.14 Main scheme applicants not currently placed from all domiciles: 7 days after A level results day

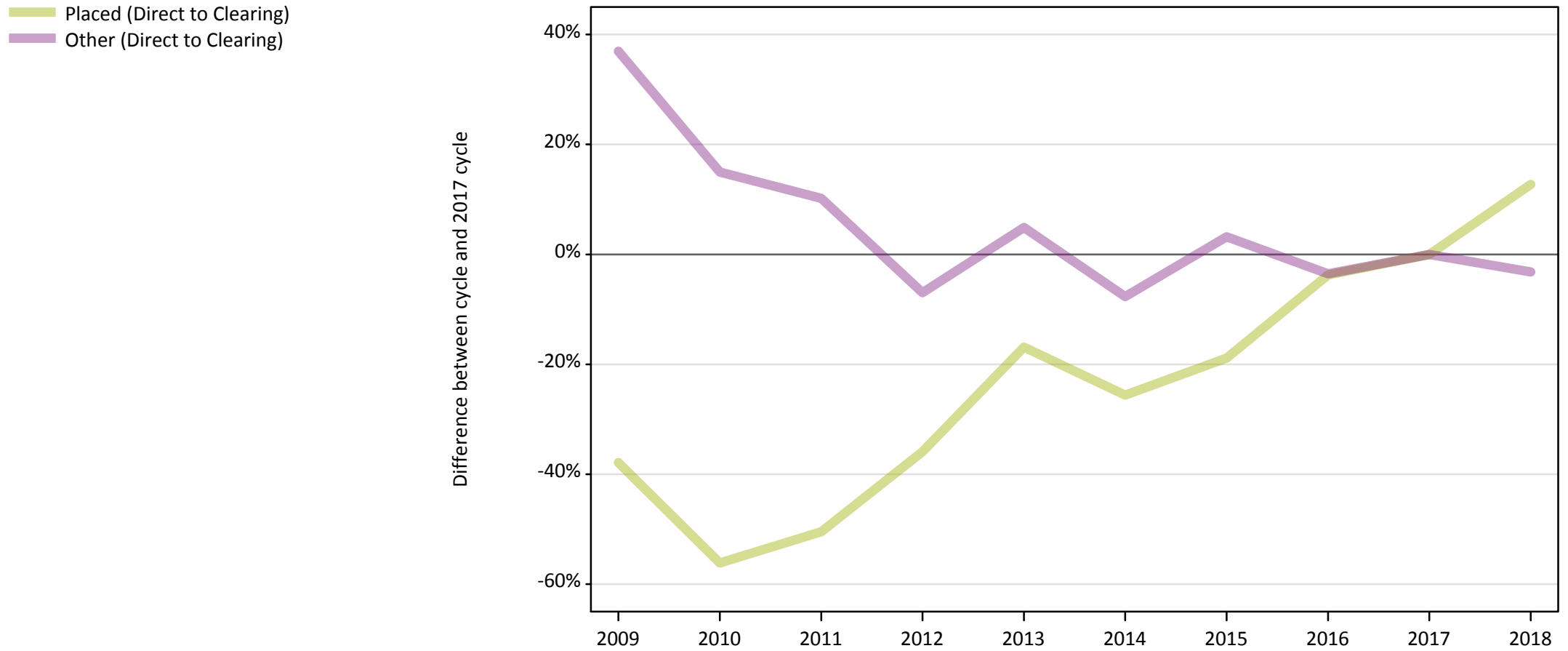
Applicants in unplaced states: difference between cycle and 2017 cycle

Applicant type	Status	2009	2010	2011	2012	2013	2014	2015	2016	2017	2018
Main scheme	Holding offer	-5%	-4%	-6%	-6%	-2%	3%	12%	2%	0%	4%
	Free to be placed in Clearing	2%	43%	42%	24%	17%	22%	18%	14%	0%	-5%

Note: The percentage change is not recorded in the above table for groups with fewer than 10 unplaced applicants in that cycle or in the 2017 cycle.

A.15 Direct to Clearing applicants from all domiciles: 7 days after A level results day

Direct to Clearing: difference between cycle and 2017 cycle



Note: The percentage change is not plotted in the above chart for groups with fewer than 30 placed applicants in any one cycle.

A.16 Direct to Clearing applicants from all domiciles: 7 days after A level results day

Direct to Clearing 7 days after A level results day

Applicant type	Status	2009	2010	2011	2012	2013	2014	2015	2016	2017	2018
Direct to Clearing	Placed (Direct to Clearing)	4,740	3,350	3,780	4,890	6,340	5,680	6,190	7,350	7,630	8,600
	Other (Direct to Clearing)	10,950	9,190	8,810	7,440	8,390	7,380	8,250	7,710	7,990	7,740

A.17 Direct to Clearing applicants from all domiciles: 7 days after A level results day

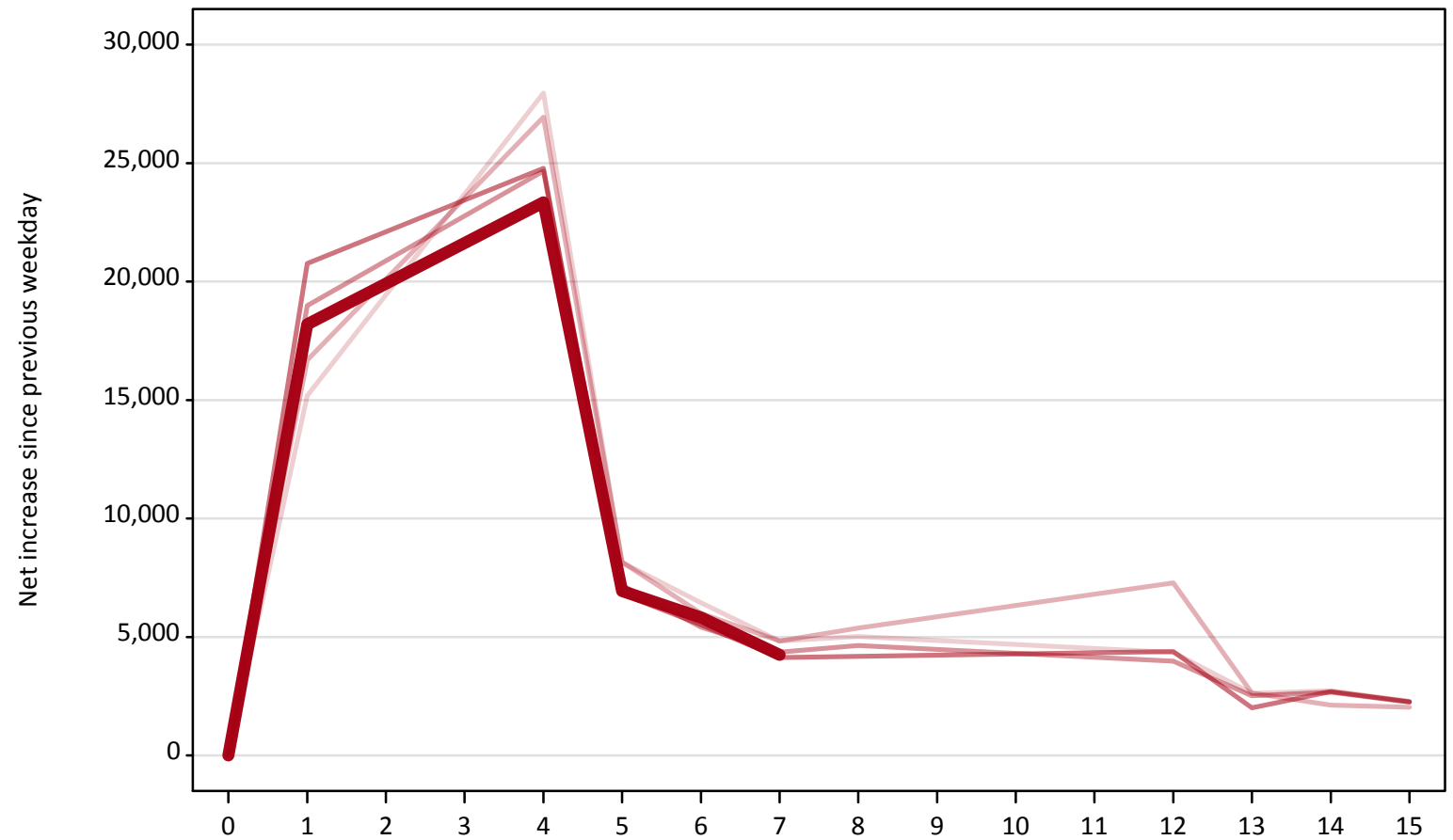
Direct to Clearing: difference between cycle and 2017 cycle

Applicant type	Status	2009	2010	2011	2012	2013	2014	2015	2016	2017	2018
Direct to Clearing	Placed (Direct to Clearing)	-38%	-56%	-50%	-36%	-17%	-26%	-19%	-4%	0%	13%
	Other (Direct to Clearing)	37%	15%	10%	-7%	5%	-8%	3%	-4%	0%	-3%

Note: The percentage change is not recorded in the above table for groups with fewer than 10 placed applicants in that cycle or in the 2017 cycle.

A.18 All Placed: Daily net change (from all domiciles)
Net increase since previous weekday (2018 cycle up to 7 days after A level results day)

- 2014
- 2015
- 2016
- 2017
- 2018**

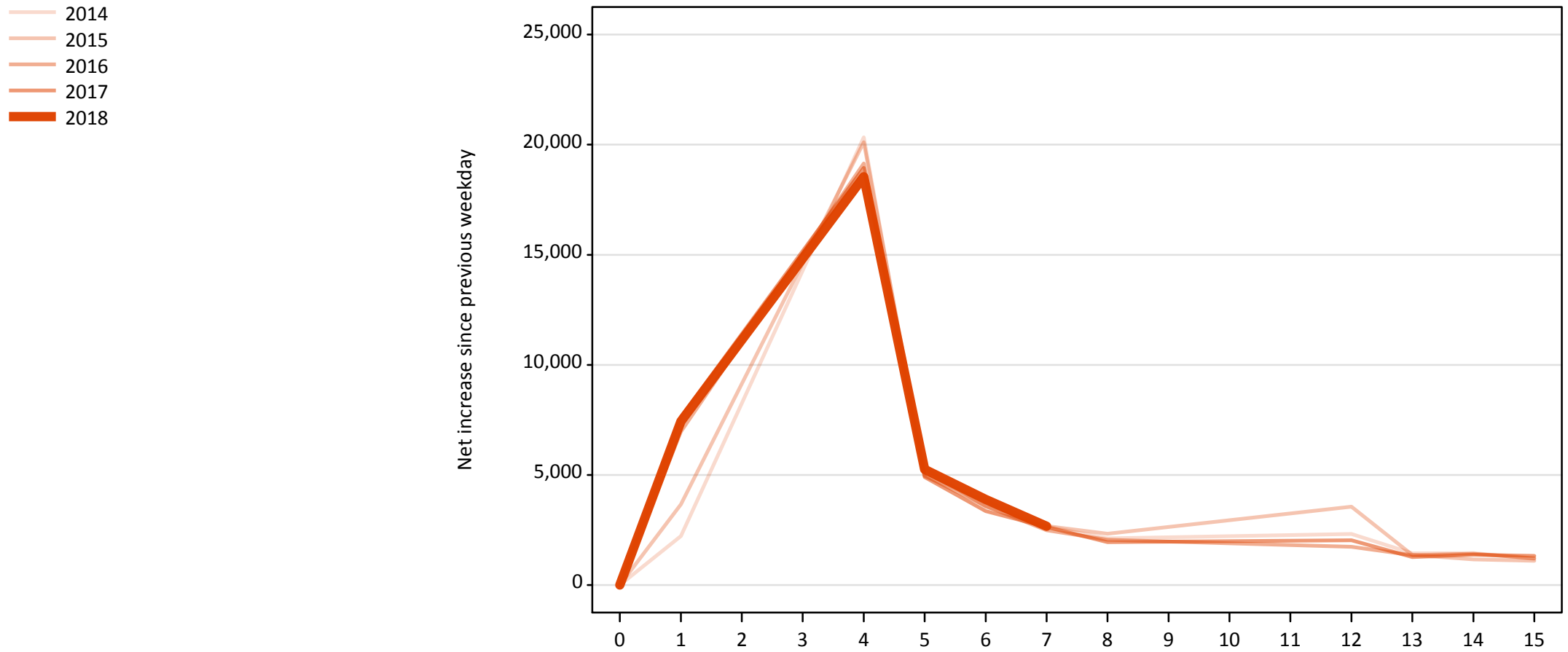


A.19 All Placed: Daily net change (from all domiciles)

Net increase since previous weekday (2018 cycle up to 7 days after A level results day)

Applicant status, days since A level results day		2014	2015	2016	2017	2018
All Placed	0	0	0	0	0	0
	1	15,180	16,680	18,990	20,770	18,200
	4	27,960	26,940	24,670	24,790	23,340
	5	8,140	8,160	7,170	6,810	6,940
	6	6,450	6,000	5,410	5,510	5,820
	7	4,830	4,830	4,350	4,140	4,240
	8	5,020	5,370	4,640	4,190	
	12	4,340	7,280	3,980	4,380	
	13	2,620	2,630	2,510	2,010	
	14	2,730	2,120	2,660	2,700	
	15	2,280	2,030	2,250	2,260	

A.20 Placed through Clearing only: Daily net change (from all domiciles)
Net increase since previous weekday (2018 cycle up to 7 days after A level results day)



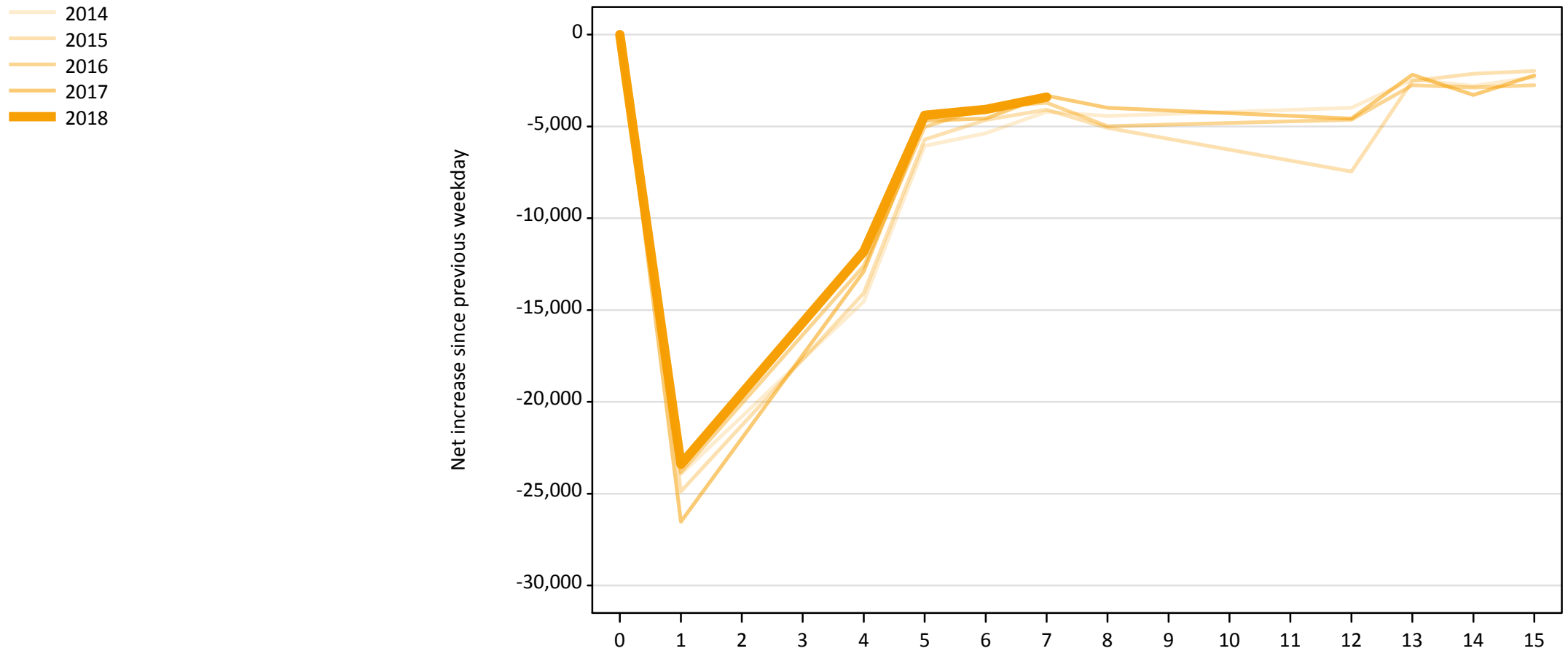
A.21 Placed through Clearing only: Daily net change (from all domiciles)

Net increase since previous weekday (2018 cycle up to 7 days after A level results day)

Applicant status, days since A level results day		2014	2015	2016	2017	2018
Placed through Clearing only	0	0	0	0	0	0
	1	2,220	3,660	6,970	7,640	7,440
	4	20,340	20,110	19,140	18,940	18,550
	5	4,950	5,290	4,960	4,910	5,250
	6	3,810	3,560	3,590	3,360	3,890
	7	2,650	2,680	2,480	2,640	2,660
	8	2,120	2,330	2,050	1,950	
	12	2,310	3,550	1,740	2,030	
	13	1,450	1,370	1,350	1,270	
	14	1,450	1,160	1,420	1,370	
	15	1,190	1,100	1,210	1,320	

A.22 Holding Offer: Daily net change (from all domiciles)

Net increase since previous weekday (2018 cycle up to 7 days after A level results day)

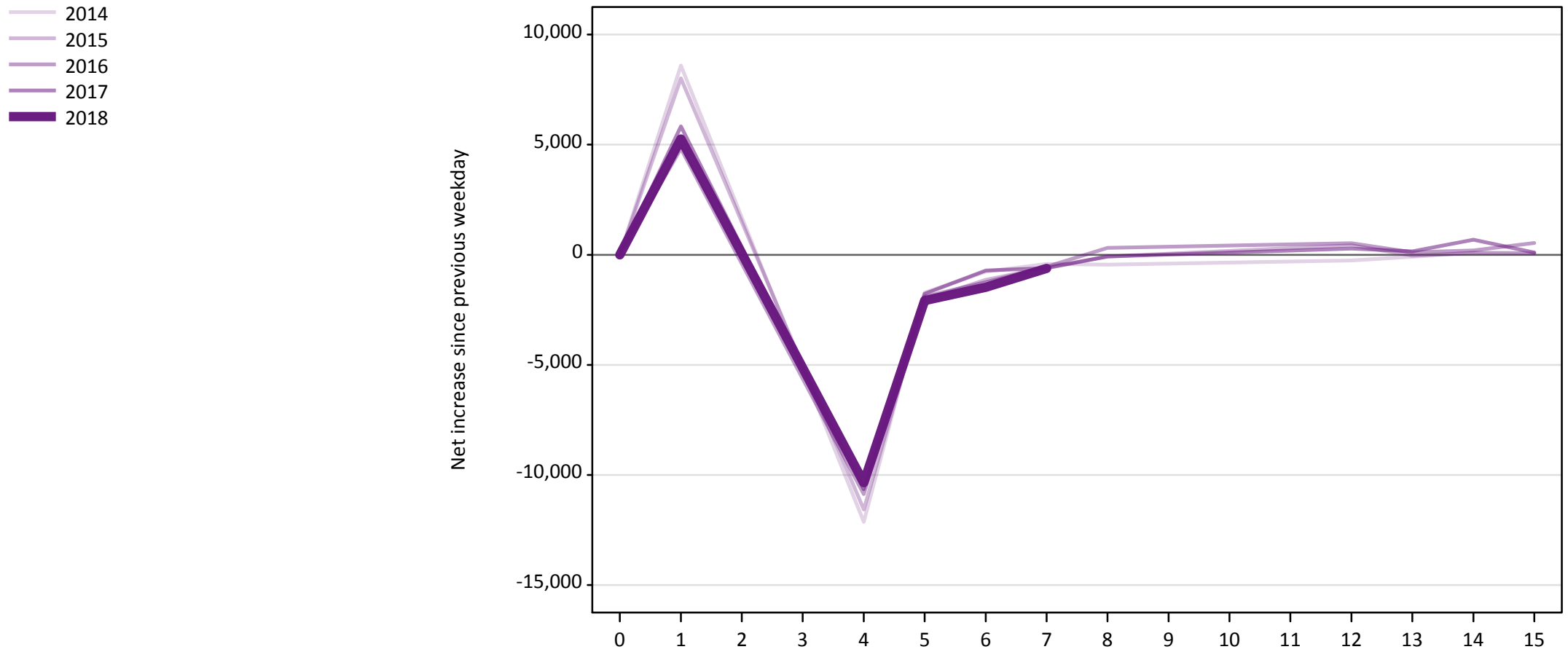


A.23 Holding Offer: Daily net change (from all domiciles)

Net increase since previous weekday (2018 cycle up to 7 days after A level results day)

Applicant status, days since A level results day		2014	2015	2016	2017	2018
Holding Offer	0	0	0	0	0	0
	1	-23,940	-24,880	-23,840	-26,530	-23,410
	4	-14,530	-14,080	-12,600	-12,900	-11,810
	5	-6,060	-5,720	-5,030	-4,680	-4,390
	6	-5,380	-4,650	-3,970	-4,580	-4,080
	7	-4,210	-4,090	-3,700	-3,330	-3,400
	8	-4,430	-5,080	-4,990	-3,990	
	12	-3,980	-7,460	-4,640	-4,580	
	13	-2,450	-2,520	-2,760	-2,180	
	14	-2,790	-2,130	-2,880	-3,280	
	15	-2,330	-1,980	-2,760	-2,230	

A.24 Free to be placed in Clearing: Daily net change (from all domiciles)
Net increase since previous weekday (2018 cycle up to 7 days after A level results day)



A.25 Free to be placed in Clearing: Daily net change (from all domiciles)

Net increase since previous weekday (2018 cycle up to 7 days after A level results day)

Applicant status, days since A level results day		2014	2015	2016	2017	2018
Free to be placed in Clearing	0	0	0	0	0	0
	1	8,600	8,010	4,820	5,830	5,260
	4	-12,130	-11,570	-10,870	-10,650	-10,350
	5	-1,720	-2,040	-1,900	-1,780	-2,080
	6	-770	-1,130	-1,250	-710	-1,480
	7	-420	-570	-540	-610	-620
	8	-450	-80	310	-80	
	12	-260	430	530	280	
	13	-90	-40	120	150	
	14	100	80	200	680	
	15	90	60	530	100	