

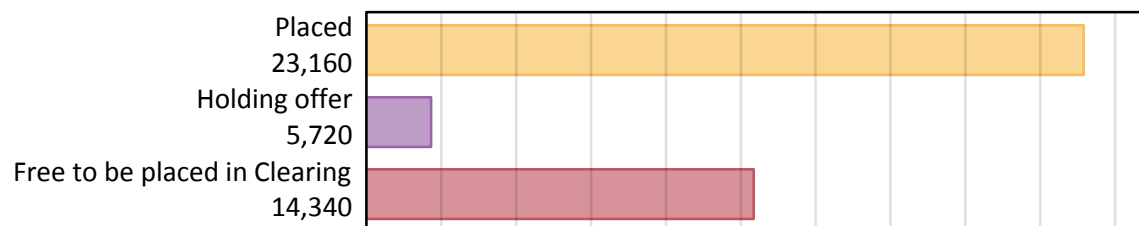
# Daily Clearing Analysis: Overview

## B7 Nursing analysis at 00:05 on Wednesday 22 August 2018 (6 days after A level results day)

### AB.1 Placed applicants to nursing from all domiciles, 2018 cycle

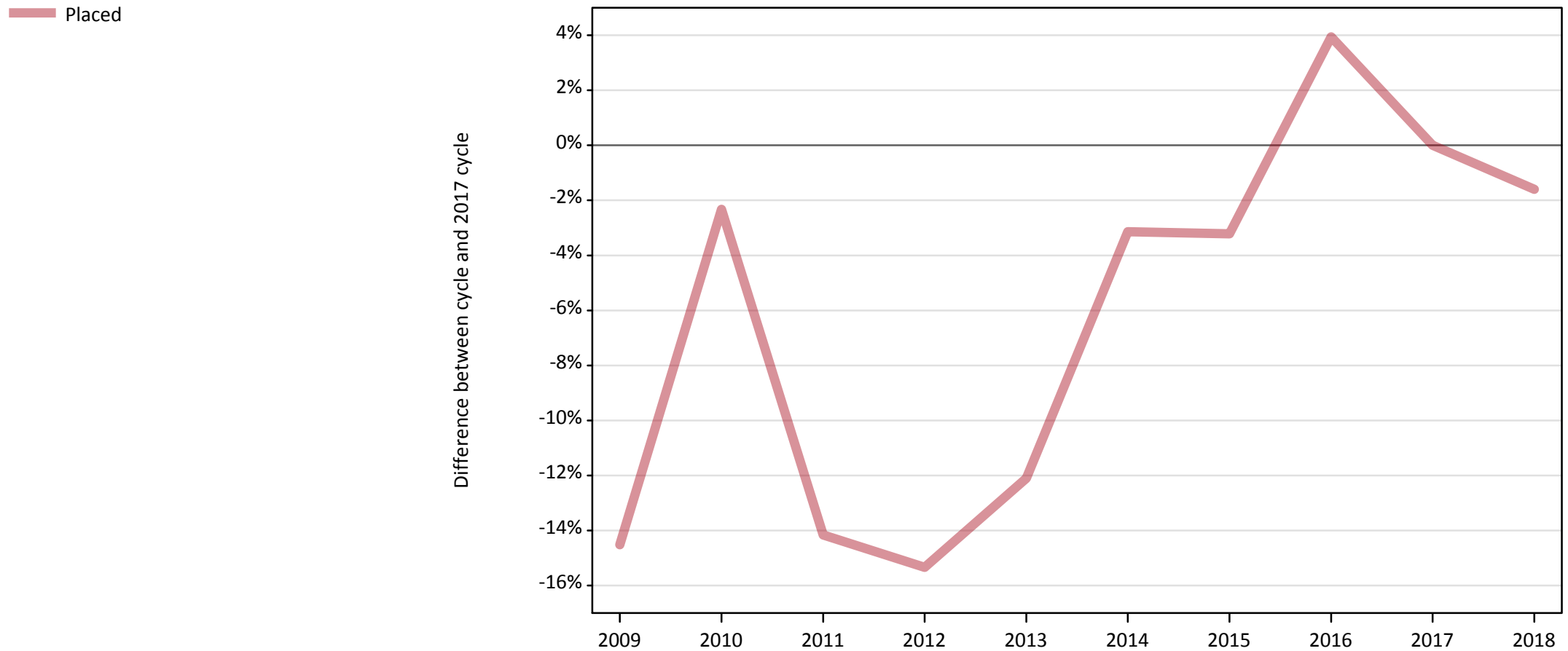
Applicant type	Status	2018
Main scheme	Placed (Clearing)	900
	Placed (Adjustment)	10
	Placed (Firm)	20,570
	Placed (Insurance)	450
	Placed (Other)	960
	Holding offer	5,720
	Free to be placed in Clearing	14,340
Direct to Clearing	Placed (Direct to Clearing)	280
	Other (Direct to Clearing)	450
All applicants	Placed	23,160

### AB.2 Summary of nursing applicants who are placed, holding offers or free to be placed in Clearing ( all domiciles )



### AB.3 Placed applicants to nursing from all domiciles: 6 days after A level results day

Placed applicants to nursing: difference between cycle and 2017 cycle



Note: The percentage change is not plotted in the above chart for groups with fewer than 30 placed applicants in any one cycle.

#### AB.4 Placed applicants to nursing from all domiciles: 6 days after A level results day

Placed applicants to nursing: applicants at 6 days after A level results day

Applicant type	Status	2009	2010	2011	2012	2013	2014	2015	2016	2017	2018
All applicants	Placed	20,120	22,990	20,210	19,930	20,690	22,800	22,780	24,470	23,540	23,160

#### AB.5 Placed applicants to nursing from all domiciles: 6 days after A level results day

Placed applicants to nursing: difference between cycle and 2017 cycle

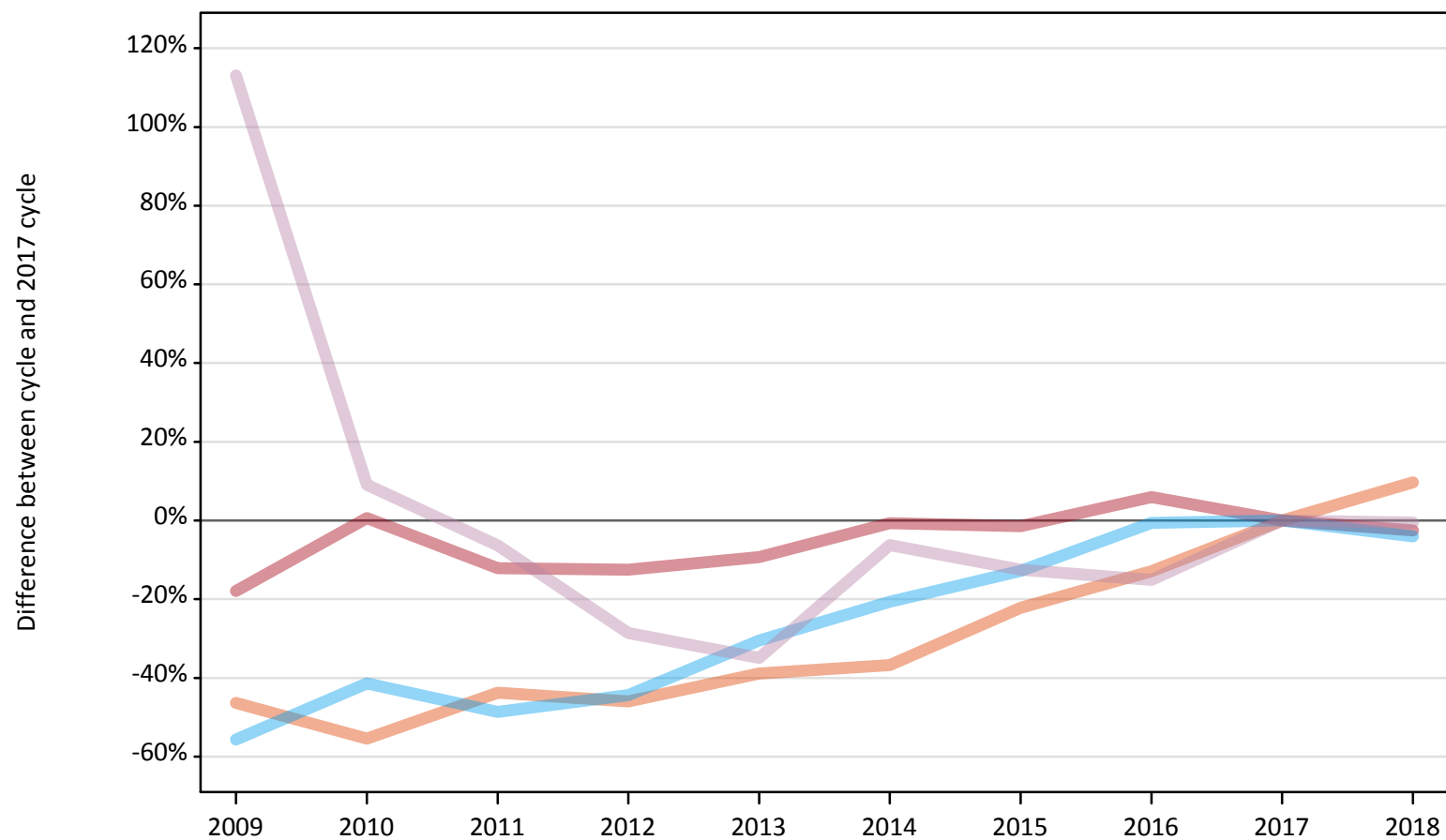
Applicant type	Status	2009	2010	2011	2012	2013	2014	2015	2016	2017	2018
All applicants	Placed	-15%	-2%	-14%	-15%	-12%	-3%	-3%	4%	0%	-2%

Note: The percentage change is not recorded in the above table for groups with fewer than 10 placed applicants in that cycle or in the 2017 cycle.

## AB.6 Placed main scheme applicants to nursing from all domiciles: 6 days after A level results day

All Main scheme placed routes (excluding Adjustment): difference between cycle and 2017 cycle

- Placed (Clearing)
- Placed (Firm)
- Placed (Insurance)
- Placed (Other)



Note: The percentage change is not plotted in the above chart for groups with fewer than 30 placed applicants in any one cycle.

**AB.7 Placed main scheme applicants to nursing from all domiciles: 6 days after A level results day**

All Main scheme placed routes (excluding Adjustment): applicants at 6 days after A level results day

Applicant type	Status	2009	2010	2011	2012	2013	2014	2015	2016	2017	2018
Main scheme	Placed (Clearing)	440	360	460	440	500	520	640	710	820	900
	Placed (Firm)	17,330	21,240	18,540	18,480	19,140	20,960	20,810	22,360	21,110	20,570
	Placed (Insurance)	210	280	240	260	330	370	410	470	470	450
	Placed (Other)	2,050	1,050	900	690	630	900	840	820	960	960

**AB.8 Placed main scheme applicants to nursing from all domiciles: 6 days after A level results day**

All Main scheme placed routes (excluding Adjustment): difference between cycle and 2017 cycle

Applicant type	Status	2009	2010	2011	2012	2013	2014	2015	2016	2017	2018
Main scheme	Placed (Clearing)	-46%	-55%	-44%	-46%	-39%	-37%	-22%	-13%	0%	10%
	Placed (Firm)	-18%	1%	-12%	-12%	-9%	-1%	-1%	6%	0%	-3%
	Placed (Insurance)	-56%	-41%	-49%	-44%	-30%	-21%	-13%	-1%	0%	-4%
	Placed (Other)	113%	9%	-6%	-29%	-35%	-6%	-12%	-15%	0%	-1%

Note: The percentage change is not recorded in the above table for groups with fewer than 10 placed applicants in that cycle or in the 2017 cycle.

**AB.9 Main scheme applicants placed to nursing through adjustment: 6 days after A level results day**

Placed through adjustment: difference between cycle and 2017 cycle

**[This chart is not part of this report]**

**AB.10 Main scheme applicants placed to nursing through adjustment: 6 days after A level results day**

Placed through adjustment: applicants at 6 days after A level results day

Applicant type	Status	2009	2010	2011	2012	2013	2014	2015	2016	2017	2018
Main scheme	Placed (Adjustment)	0	0	0	0	10	10	10	0	20	10

**AB.11 Main scheme applicants placed to nursing through adjustment: 6 days after A level results day**

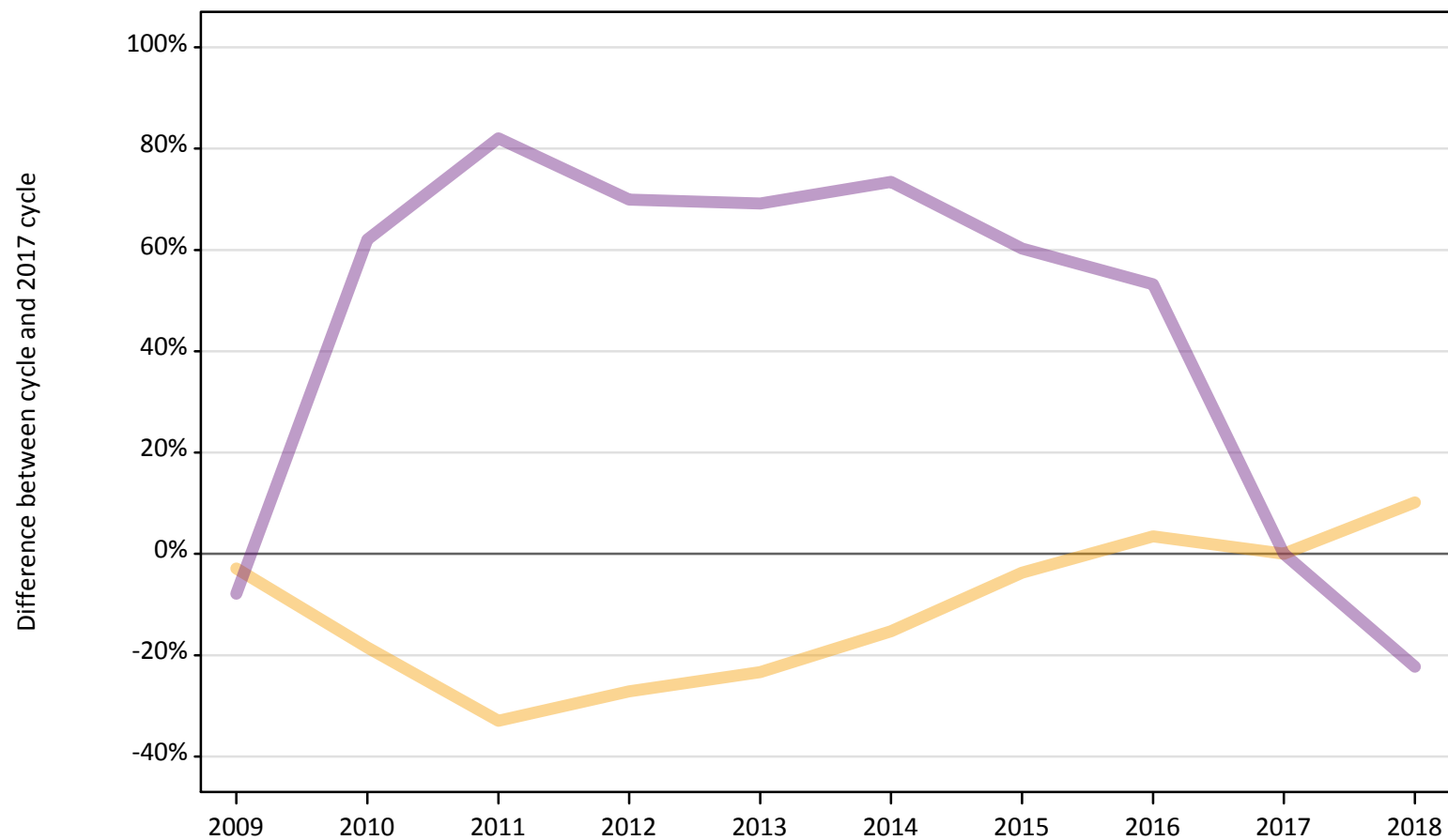
Placed through adjustment: difference between cycle and 2017 cycle

**[This table is not part of this report]**

## AB.12 Main scheme applicants to nursing not currently placed from all domiciles: 6 days after A level results day

Applicants in unplaced states: difference between cycle and 2017 cycle

— Holding offer  
— Free to be placed in Clearing



Note: The percentage change is not plotted in the above chart for groups with fewer than 30 unplaced applicants in any one cycle.

**AB.13 Main scheme applicants to nursing not currently placed from all domiciles: 6 days after A level results day**

Applicants in unplaced states: applicants at 6 days after A level results day

Applicant type	Status	2009	2010	2011	2012	2013	2014	2015	2016	2017	2018
Main scheme	Holding offer	5,050	4,240	3,490	3,790	3,990	4,400	5,010	5,380	5,200	5,720
	Free to be placed in Clearing	17,000	29,910	33,600	31,370	31,220	32,010	29,580	28,270	18,460	14,340

**AB.14 Main scheme applicants to nursing not currently placed from all domiciles: 6 days after A level results day**

Applicants in unplaced states: difference between cycle and 2017 cycle

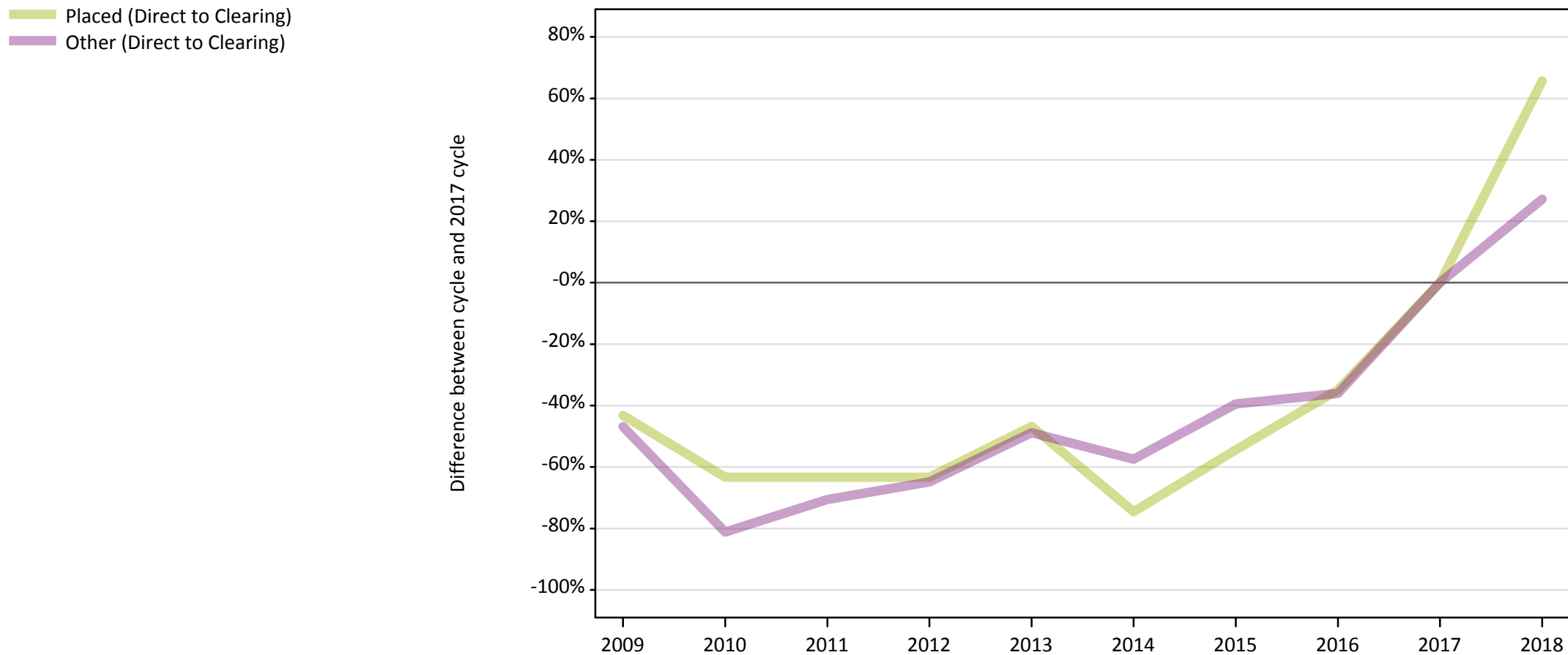
Applicant type	Status	2009	2010	2011	2012	2013	2014	2015	2016	2017	2018
Main scheme	Holding offer	-3%	-18%	-33%	-27%	-23%	-15%	-4%	3%	0%	10%
	Free to be placed in Clearing	-8%	62%	82%	70%	69%	73%	60%	53%	0%	-22%

Note: The percentage change is not recorded in the above table for groups with fewer than 10 unplaced applicants in that cycle or in the 2017 cycle.



### AB.15 Direct to Clearing applicants from all domiciles: 6 days after A level results day

Direct to Clearing: difference between cycle and 2017 cycle



Note: The percentage change is not plotted in the above chart for groups with fewer than 30 placed applicants in any one cycle.

**AB.16 Direct to Clearing applicants from all domiciles: 6 days after A level results day**

Direct to Clearing 6 days after A level results day

Applicant type	Status	2009	2010	2011	2012	2013	2014	2015	2016	2017	2018
Direct to Clearing	Placed (Direct to Clearing)	100	60	60	60	90	40	80	110	170	280
	Other (Direct to Clearing)	190	70	100	120	180	150	210	220	350	450

**AB.17 Direct to Clearing applicants from all domiciles: 6 days after A level results day**

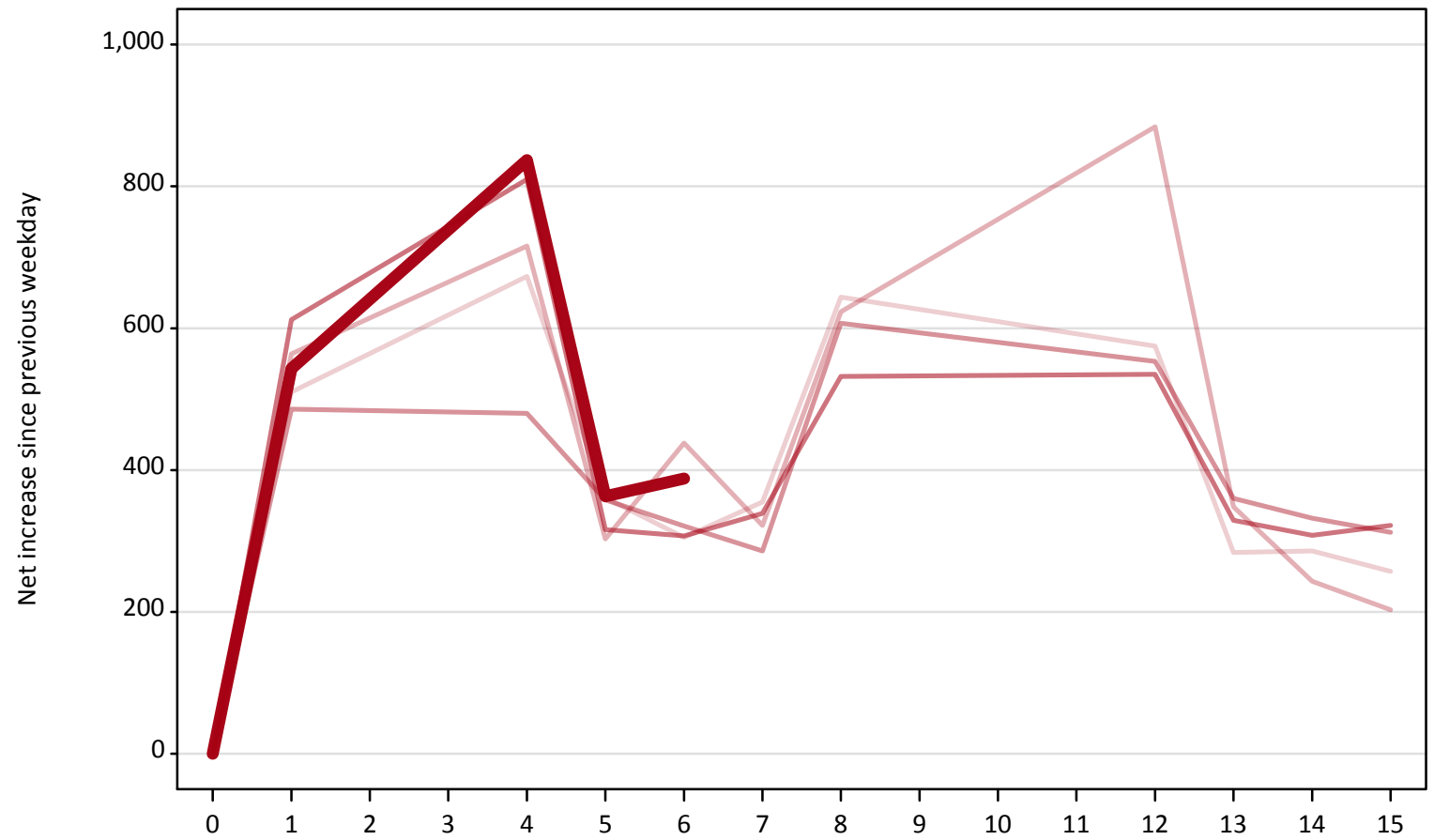
Direct to Clearing: difference between cycle and 2017 cycle

Applicant type	Status	2009	2010	2011	2012	2013	2014	2015	2016	2017	2018
Direct to Clearing	Placed (Direct to Clearing)	-43%	-63%	-63%	-63%	-47%	-75%	-54%	-35%	0%	66%
	Other (Direct to Clearing)	-47%	-81%	-71%	-65%	-49%	-57%	-39%	-36%	0%	27%

Note: The percentage change is not recorded in the above table for groups with fewer than 10 placed applicants in that cycle or in the 2017 cycle.

**AB.18 All Placed: Daily net change (from all domiciles)**  
Net increase since previous weekday (2018 cycle up to 6 days after A level results day)

- 2014
- 2015
- 2016
- 2017
- 2018**

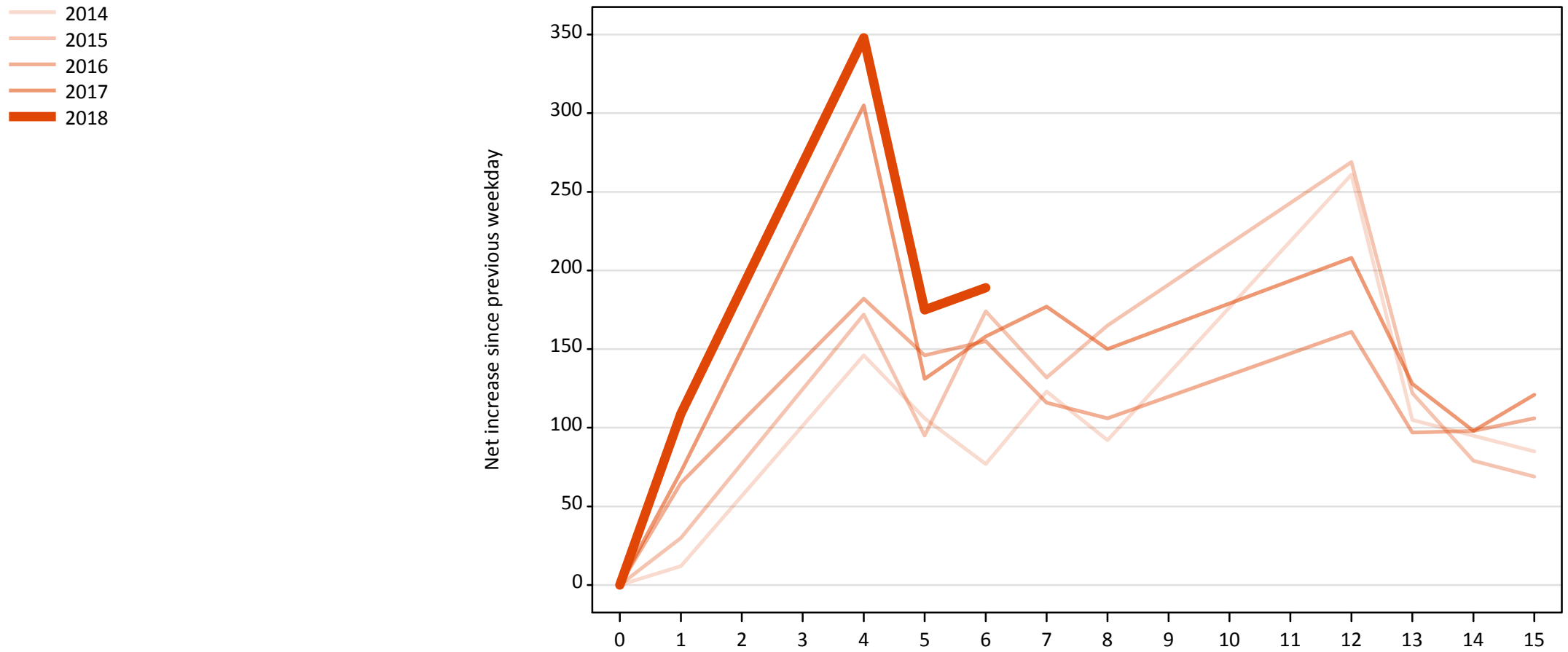


**AB.19 All Placed: Daily net change (from all domiciles)**

Net increase since previous weekday (2018 cycle up to 6 days after A level results day)

Applicant status, days since A level results day		2014	2015	2016	2017	2018
All Placed	0	0	0	0	0	0
	1	510	560	490	610	540
	4	670	720	480	810	840
	5	360	300	360	320	360
	6	310	440	320	310	390
	7	360	320	290	340	
	8	640	620	610	530	
	12	580	880	550	540	
	13	280	350	360	330	
	14	290	240	330	310	
	15	260	200	310	320	

**AB.20 Placed through Clearing only: Daily net change (from all domiciles)**  
Net increase since previous weekday (2018 cycle up to 6 days after A level results day)



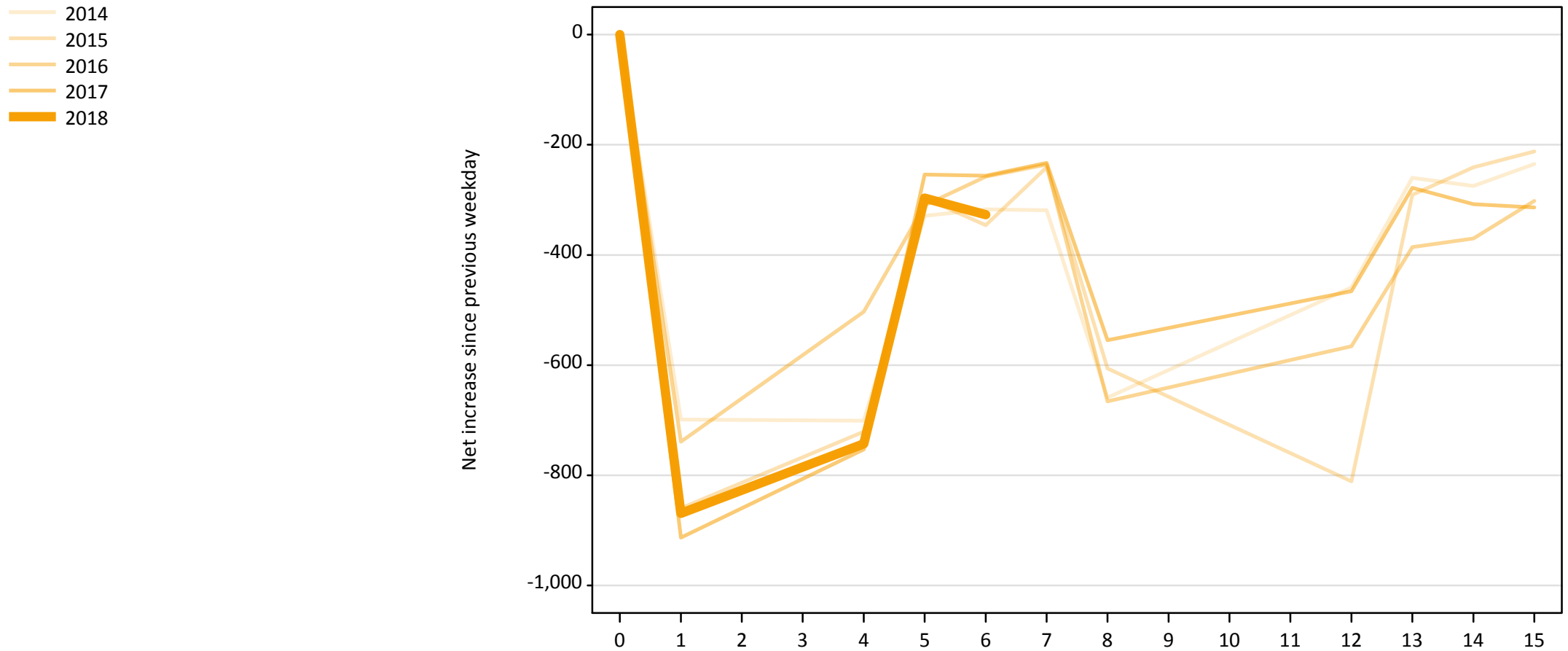
**AB.21 Placed through Clearing only: Daily net change (from all domiciles)**

Net increase since previous weekday (2018 cycle up to 6 days after A level results day)

Applicant status, days since A level results day		2014	2015	2016	2017	2018
Placed through Clearing only	0	0	0	0	0	0
	1	10	30	70	70	110
	4	150	170	180	310	350
	5	110	100	150	130	180
	6	80	170	160	160	190
	7	120	130	120	180	
	8	90	170	110	150	
	12	260	270	160	210	
	13	110	120	100	130	
	14	100	80	100	100	
	15	90	70	110	120	

## AB.22 Holding Offer: Daily net change (from all domiciles)

Net increase since previous weekday (2018 cycle up to 6 days after A level results day)



**AB.23 Holding Offer: Daily net change (from all domiciles)**

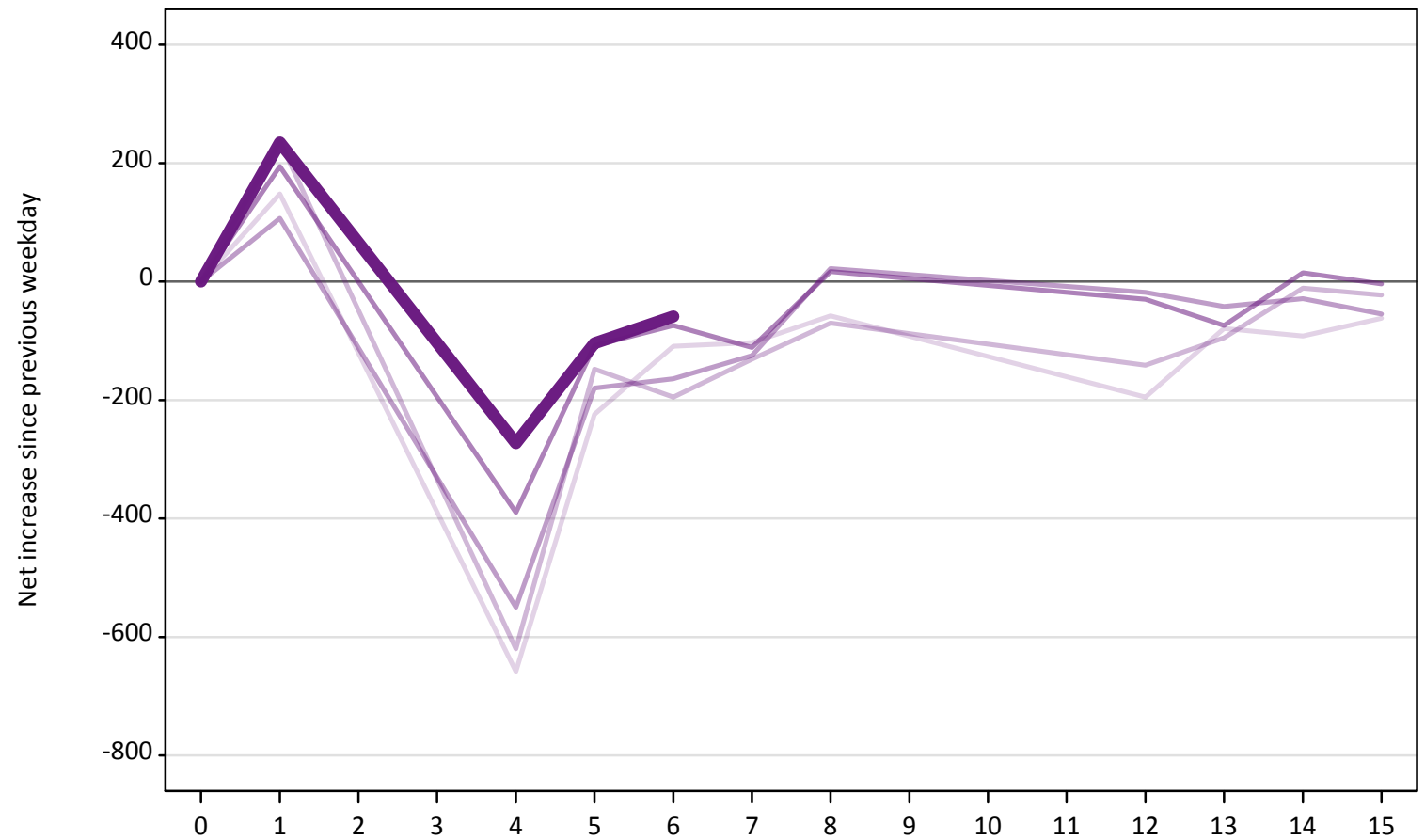
Net increase since previous weekday (2018 cycle up to 6 days after A level results day)

Applicant status, days since A level results day	2014	2015	2016	2017	2018	
Holding Offer	0	0	0	0	0	
	1	-700	-860	-740	-910	-870
	4	-700	-720	-500	-750	-740
	5	-330	-300	-310	-250	-300
	6	-320	-350	-260	-260	-330
	7	-320	-240	-240	-230	
	8	-660	-610	-670	-560	
	12	-460	-810	-570	-470	
	13	-260	-290	-390	-280	
	14	-280	-240	-370	-310	
	15	-240	-210	-300	-310	



**AB.24 Free to be placed in Clearing: Daily net change (from all domiciles)**  
Net increase since previous weekday (2018 cycle up to 6 days after A level results day)

- 2014
- 2015
- 2016
- 2017
- 2018



**AB.25 Free to be placed in Clearing: Daily net change (from all domiciles)**  
 Net increase since previous weekday (2018 cycle up to 6 days after A level results day)

Applicant status, days since A level results day		2014	2015	2016	2017	2018
Free to be placed in Clearing	0	0	0	0	0	0
	1	150	240	110	190	240
	4	-660	-620	-550	-390	-270
	5	-220	-150	-180	-110	-100
	6	-110	-200	-160	-70	-60
	7	-100	-130	-130	-110	
	8	-60	-70	20	20	
	12	-200	-140	-20	-30	
	13	-80	-100	-40	-70	
	14	-90	-10	-30	20	
	15	-60	-20	-60	0	