

Daily Clearing Analysis: Age

B7 Nursing analysis at 00:05 on Wednesday 22 August 2018 (6 days after A level results day)

CB.1 Placed applicants to nursing by country of domicile and age group, 2018 cycle (6 days after A level results day)

Domicile of applicant	Age group				
	17 and under	18	19	20 to 24	25 and over
England	10	4,330	2,080	3,970	6,810
Northern Ireland	0	320	170	250	220
Scotland	10	550	300	750	1,410
Wales	0	330	170	390	620
UK	20	5,530	2,720	5,360	9,070

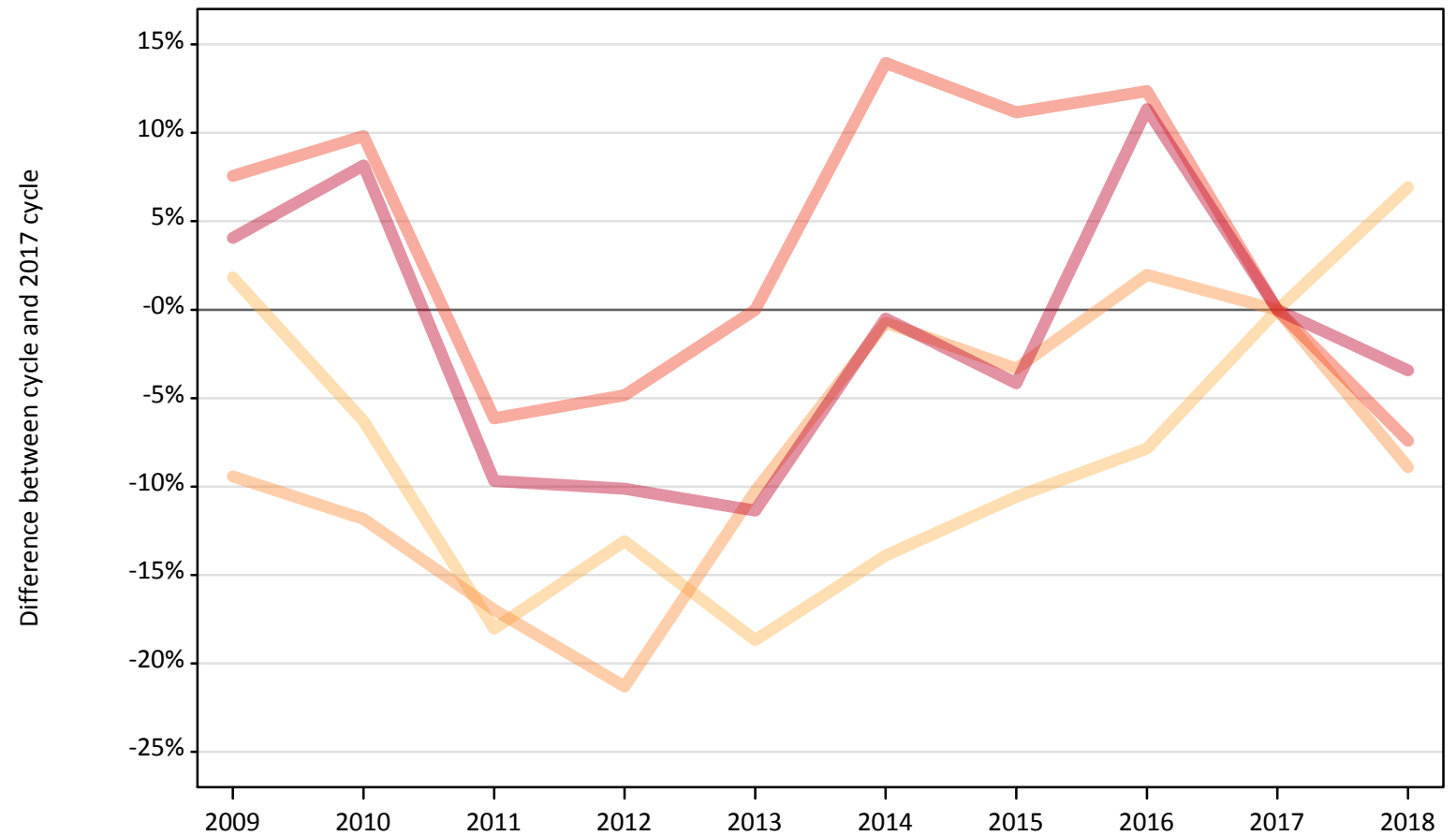
CB.2 Proportion of 18 year old population placed to nursing by country of domicile, 2018 cycle (6 days after A level results day)

Domicile of applicant	Age group	2018
England	18	0.7%
Northern Ireland	18	1.4%
Scotland	18	1.0%
Wales	18	1.0%

CB.3 Placed applicants to nursing from England by age group at 6 days after A level results day

Selected age groups: difference between cycle and 2017 cycle

- 17 and under
- 18
- 19
- 20 to 24
- 25 and over



Note: The percentage change is not plotted in the above chart for groups with fewer than 30 placed applicants in any one cycle.

CB.4 Placed applicants to nursing from England by age group at 6 days after A level results day

All age groups

Domicile of applicant	Age group	2009	2010	2011	2012	2013	2014	2015	2016	2017	2018
England	17 and under	150	80	20	0	0	10	0	0	10	10
	18	4,120	3,790	3,320	3,520	3,290	3,490	3,620	3,730	4,050	4,330
	19	2,070	2,010	1,890	1,800	2,050	2,260	2,210	2,330	2,280	2,080
	20 to 24	4,610	4,710	4,020	4,080	4,290	4,880	4,760	4,820	4,290	3,970
	25 and over	7,340	7,630	6,370	6,340	6,250	7,020	6,760	7,860	7,060	6,810

CB.5 Placed applicants to nursing from England by age group at 6 days after A level results day

Selected age groups: difference between cycle and 2017 cycle

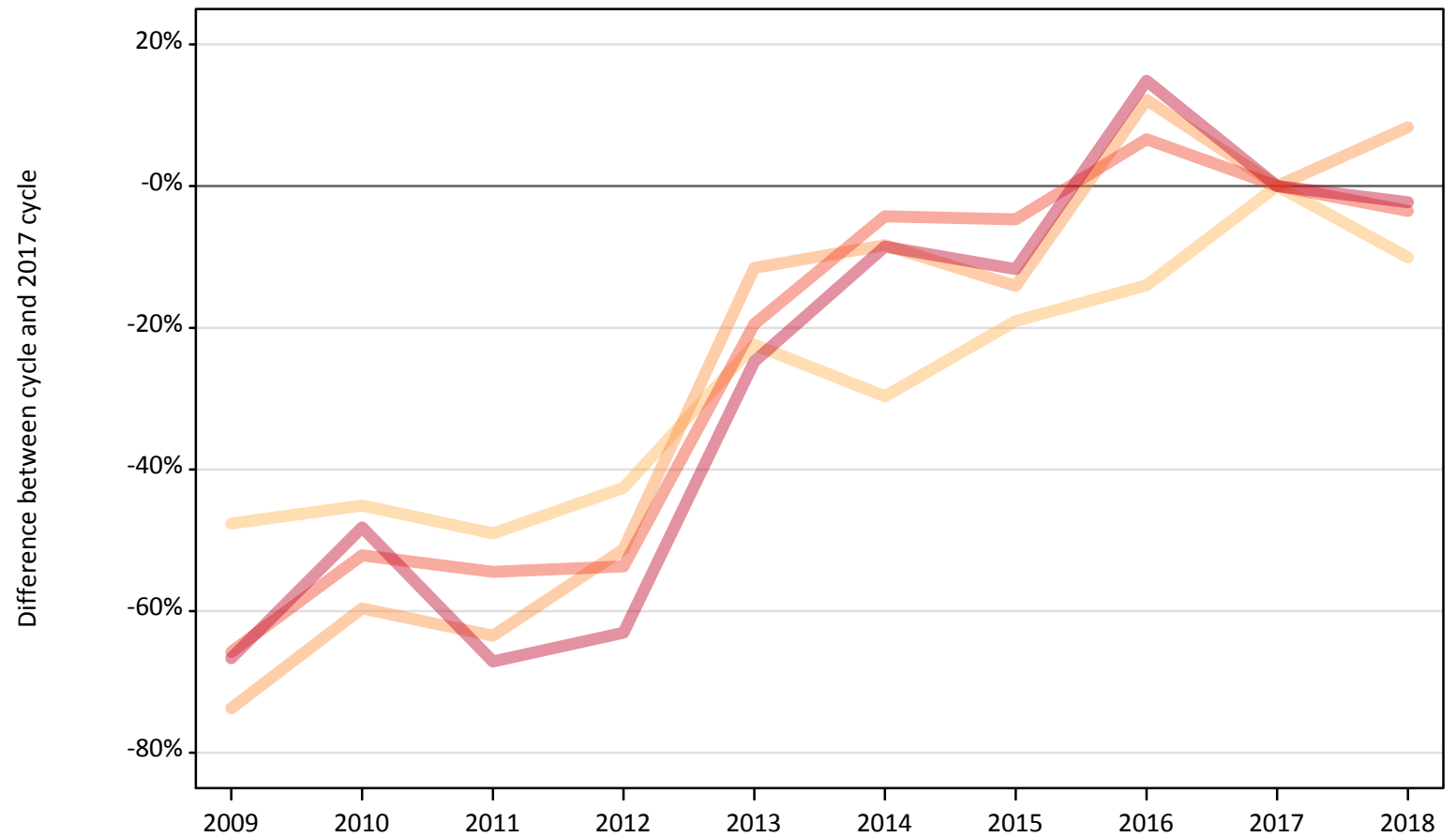
Domicile of applicant	Age group	2009	2010	2011	2012	2013	2014	2015	2016	2017	2018
England	17 and under	2367%	1150%	300%			-17%			0%	-17%
	18	2%	-6%	-18%	-13%	-19%	-14%	-11%	-8%	0%	7%
	19	-9%	-12%	-17%	-21%	-10%	-1%	-3%	2%	0%	-9%
	20 to 24	8%	10%	-6%	-5%	0%	14%	11%	12%	0%	-7%
	25 and over	4%	8%	-10%	-10%	-11%	-0%	-4%	11%	0%	-3%

Note: The percentage change is not recorded in the above table for groups with fewer than 10 placed applicants in that cycle or in the 2017 cycle.

CB.6 Placed applicants to nursing from Northern Ireland by age group at 6 days after A level results day

Selected age groups: difference between cycle and 2017 cycle

- 17 and under
- 18
- 19
- 20 to 24
- 25 and over



Note: The percentage change is not plotted in the above chart for groups with fewer than 30 placed applicants in any one cycle.

CB.7 Placed applicants to nursing from Northern Ireland by age group at 6 days after A level results day

All age groups

Domicile of applicant	Age group	2009	2010	2011	2012	2013	2014	2015	2016	2017	2018
Northern Ireland	17 and under	0	0	0	0	0	0	0	0	0	0
	18	190	200	180	210	280	250	290	310	360	320
	19	40	60	60	80	140	140	130	180	160	170
	20 to 24	90	120	120	120	210	250	250	270	260	250
	25 and over	70	120	70	80	170	200	200	260	220	220

CB.8 Placed applicants to nursing from Northern Ireland by age group at 6 days after A level results day

Selected age groups: difference between cycle and 2017 cycle

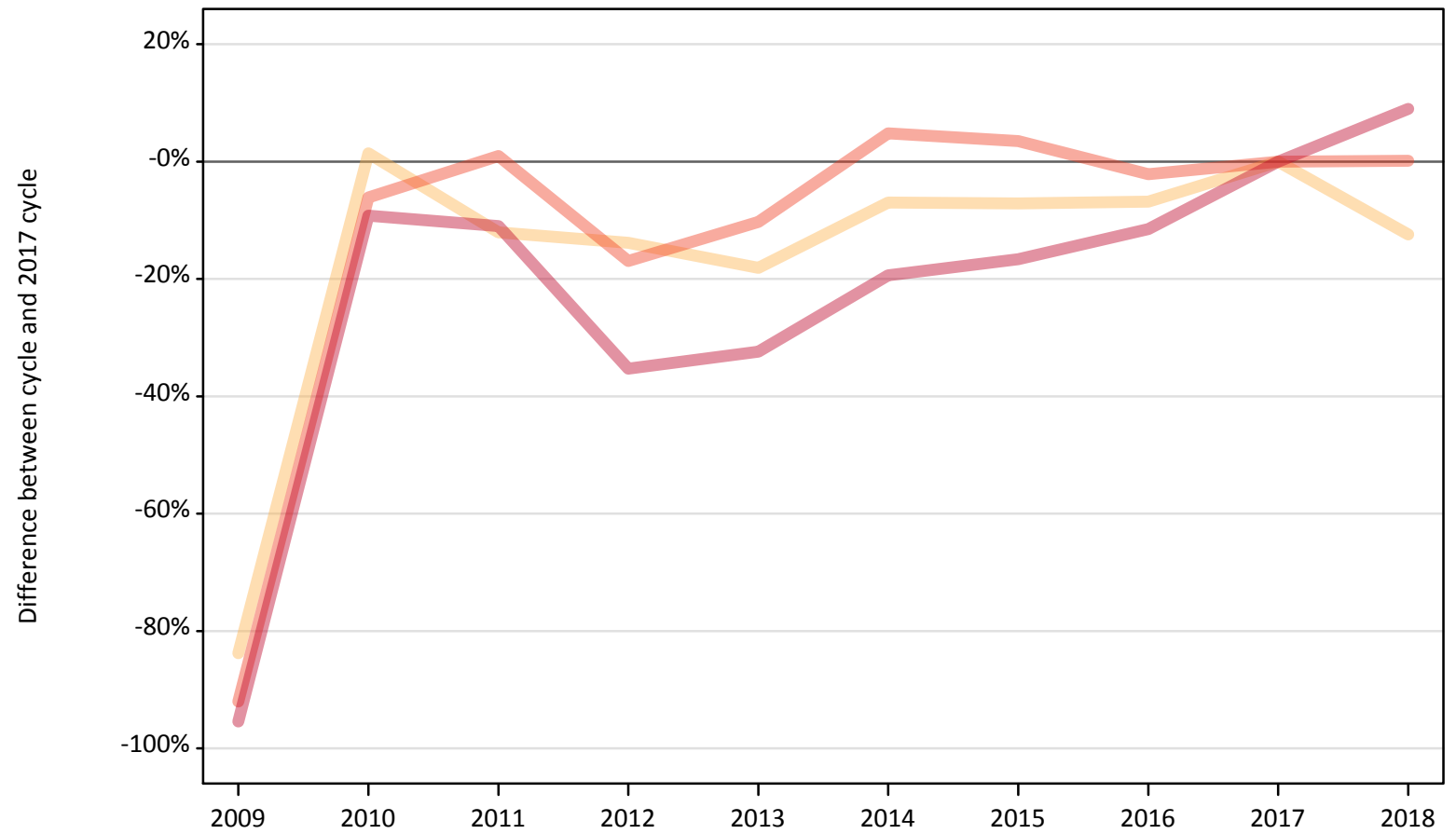
Domicile of applicant	Age group	2009	2010	2011	2012	2013	2014	2015	2016	2017	2018
Northern Ireland	17 and under										
	18	-48%	-45%	-49%	-43%	-22%	-30%	-19%	-14%	0%	-10%
	19	-74%	-60%	-63%	-51%	-12%	-8%	-14%	12%	0%	8%
	20 to 24	-66%	-52%	-54%	-54%	-19%	-4%	-5%	7%	0%	-4%
	25 and over	-67%	-48%	-67%	-63%	-25%	-9%	-12%	15%	0%	-2%

Note: The percentage change is not recorded in the above table for groups with fewer than 10 placed applicants in that cycle or in the 2017 cycle.

CB.9 Placed applicants to nursing from Scotland by age group at 6 days after A level results day

Selected age groups: difference between cycle and 2017 cycle

- 17 and under
- 18
- 19
- 20 to 24
- 25 and over



Note: The percentage change is not plotted in the above chart for groups with fewer than 30 placed applicants in any one cycle.

CB.10 Placed applicants to nursing from Scotland by age group at 6 days after A level results day

All age groups

Domicile of applicant	Age group	2009	2010	2011	2012	2013	2014	2015	2016	2017	2018
Scotland	17 and under	0	40	20	20	20	20	10	20	20	10
	18	100	640	550	540	520	590	580	590	630	550
	19	30	310	290	280	290	320	300	330	290	300
	20 to 24	60	700	760	620	670	790	780	730	750	750
	25 and over	60	1,180	1,150	840	880	1,040	1,080	1,150	1,290	1,410

CB.11 Placed applicants to nursing from Scotland by age group at 6 days after A level results day

Selected age groups: difference between cycle and 2017 cycle

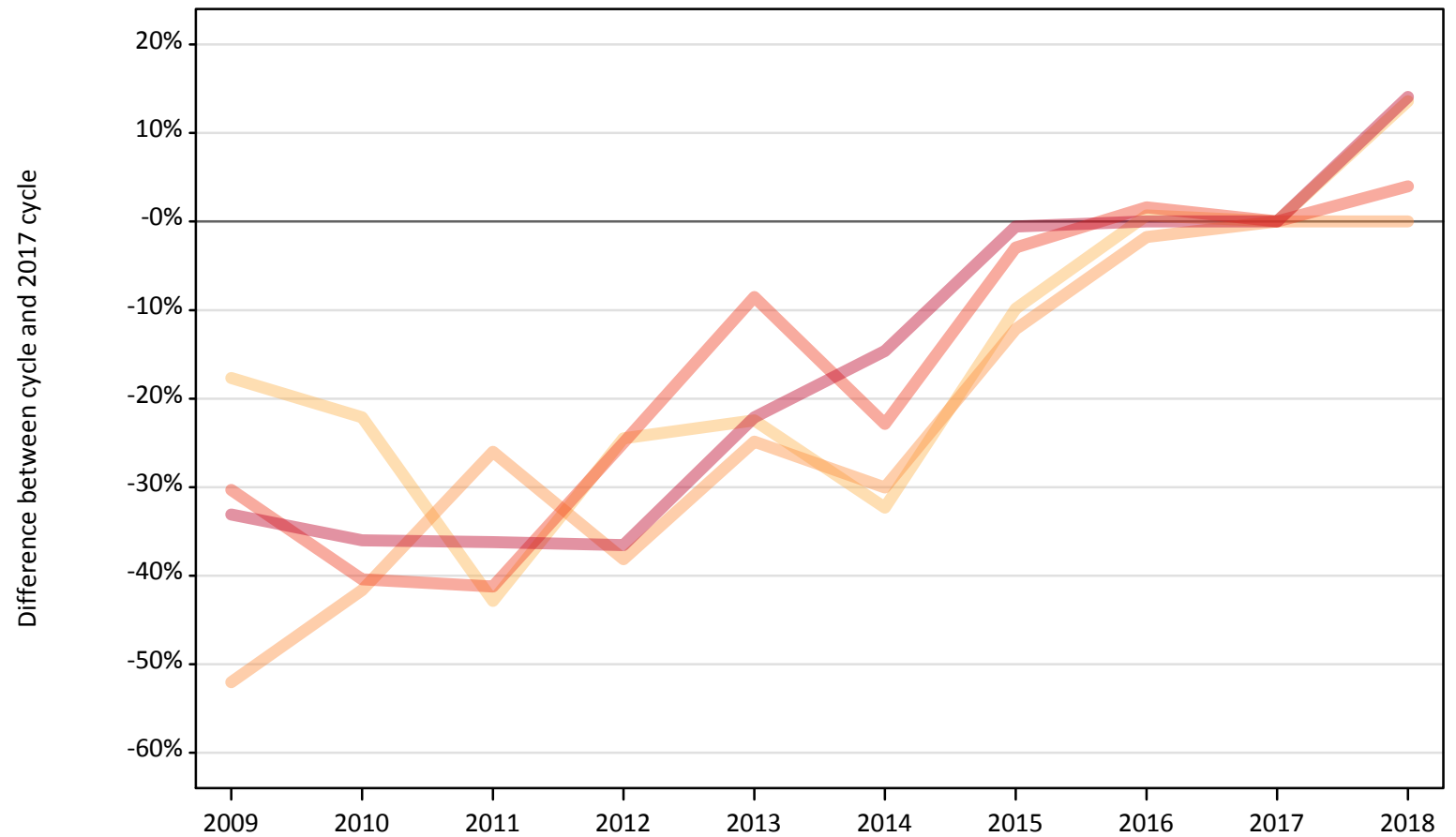
Domicile of applicant	Age group	2009	2010	2011	2012	2013	2014	2015	2016	2017	2018
Scotland	17 and under		95%	10%	0%	-5%	-19%	-43%	-24%	0%	-33%
	18	-84%	1%	-12%	-14%	-18%	-7%	-7%	-7%	0%	-12%
	19	-91%	6%	-1%	-5%	0%	8%	2%	12%	0%	2%
	20 to 24	-92%	-6%	1%	-17%	-10%	5%	3%	-2%	0%	0%
	25 and over	-95%	-9%	-11%	-35%	-32%	-19%	-17%	-12%	0%	9%

Note: The percentage change is not recorded in the above table for groups with fewer than 10 placed applicants in that cycle or in the 2017 cycle.

CB.12 Placed applicants to nursing from Wales by age group at 6 days after A level results day

Selected age groups: difference between cycle and 2017 cycle

- 17 and under
- 18
- 19
- 20 to 24
- 25 and over



Note: The percentage change is not plotted in the above chart for groups with fewer than 30 placed applicants in any one cycle.

CB.13 Placed applicants to nursing from Wales by age group at 6 days after A level results day

All age groups

Domicile of applicant	Age group	2009	2010	2011	2012	2013	2014	2015	2016	2017	2018
Wales	17 and under	0	0	0	0	0	0	0	0	0	0
	18	240	230	170	220	230	200	270	300	290	330
	19	80	100	130	110	130	120	150	170	170	170
	20 to 24	260	220	220	280	340	290	370	380	380	390
	25 and over	370	350	350	350	430	470	540	550	550	620

CB.14 Placed applicants to nursing from Wales by age group at 6 days after A level results day

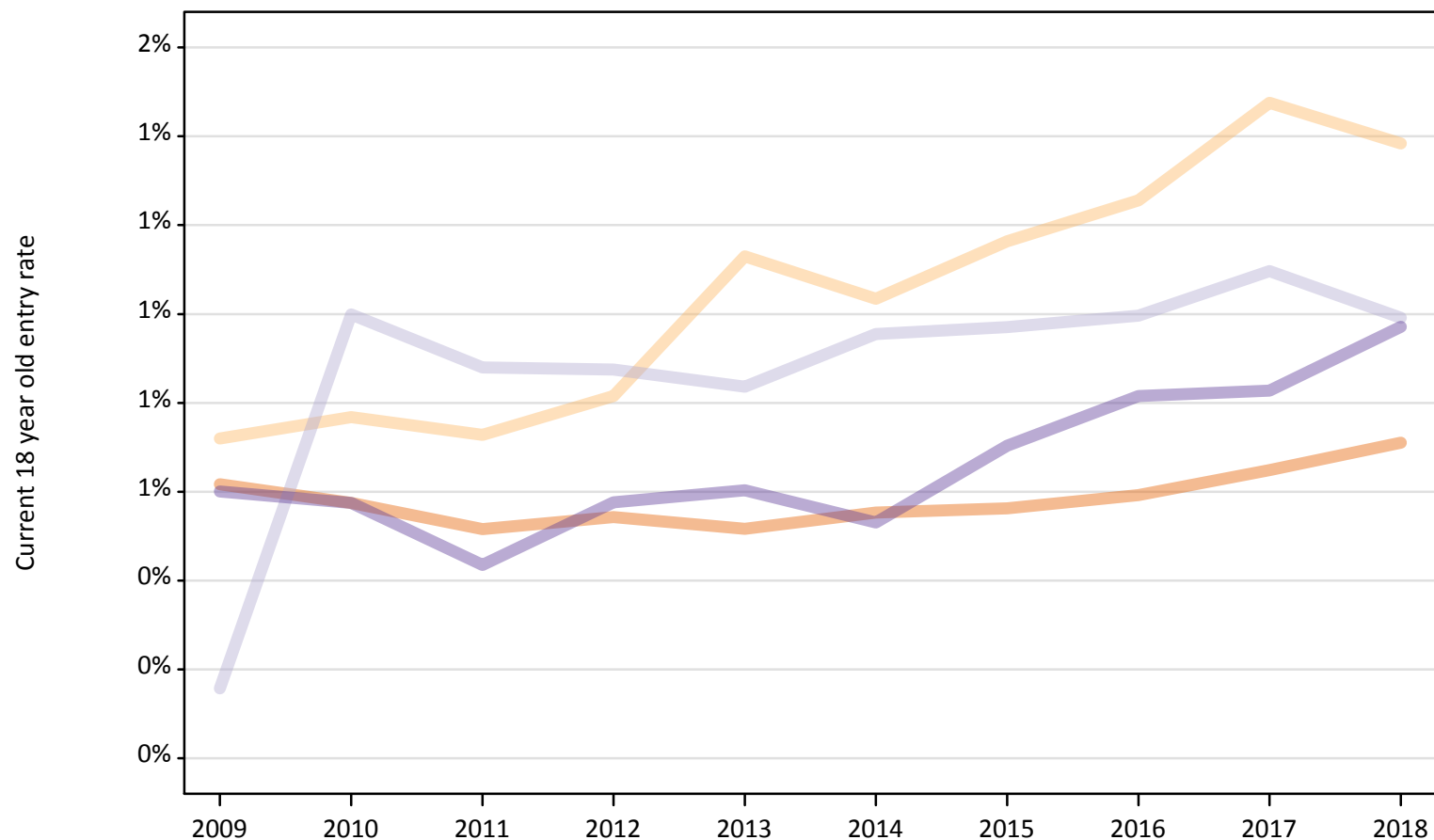
Selected age groups: difference between cycle and 2017 cycle

Domicile of applicant	Age group	2009	2010	2011	2012	2013	2014	2015	2016	2017	2018
Wales	17 and under										
	18	-18%	-22%	-43%	-24%	-22%	-32%	-10%	1%	0%	14%
	19	-52%	-42%	-26%	-38%	-25%	-30%	-12%	-2%	0%	0%
	20 to 24	-30%	-40%	-41%	-25%	-9%	-23%	-3%	2%	0%	4%
	25 and over	-33%	-36%	-36%	-37%	-22%	-15%	-1%	0%	0%	14%

Note: The percentage change is not recorded in the above table for groups with fewer than 10 placed applicants in that cycle or in the 2017 cycle.

CB.15 Entry rates to nursing for 18 year olds by UK country of domicile: 6 days after A level results day

Placed 18 year old applicants as a proportion of the 18 year old population



CB.16 Entry rates to nursing for 18 year olds by UK country of domicile: 6 days after A level results day

Placed 18 year old applicants as a proportion of the 18 year old population

Domicile of applicant	Age group	2009	2010	2011	2012	2013	2014	2015	2016	2017	2018
England	18	0.6%	0.6%	0.5%	0.5%	0.5%	0.6%	0.6%	0.6%	0.6%	0.7%
Northern Ireland	18	0.7%	0.8%	0.7%	0.8%	1.1%	1.0%	1.2%	1.3%	1.5%	1.4%
Scotland	18	0.2%	1.0%	0.9%	0.9%	0.8%	1.0%	1.0%	1.0%	1.1%	1.0%
Wales	18	0.6%	0.6%	0.4%	0.6%	0.6%	0.5%	0.7%	0.8%	0.8%	1.0%