

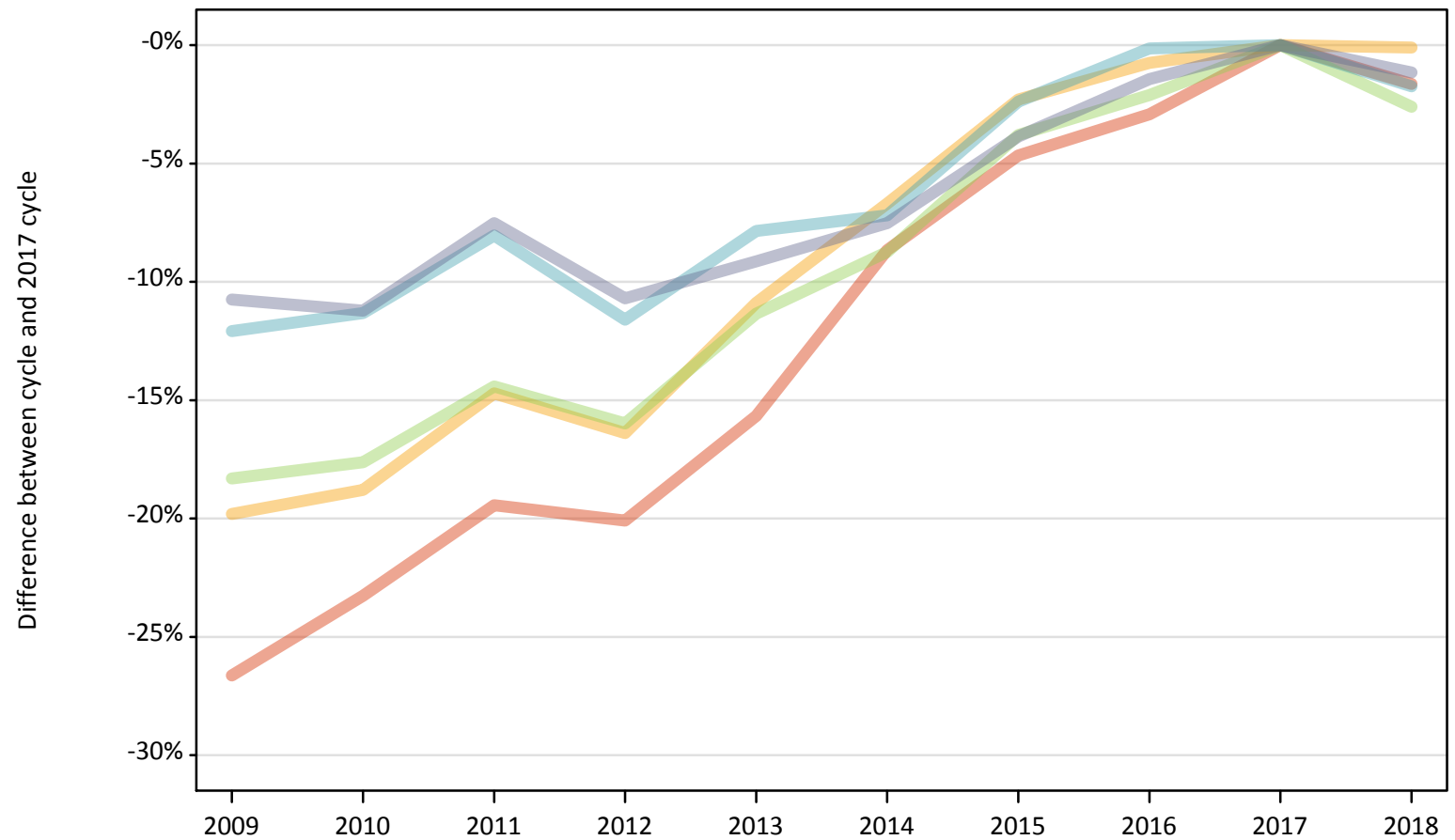
# Daily Clearing Analysis: POLAR3

Analysis at 00:05 on Wednesday 22 August 2018 (6 days after A level results day)

P.1 Placed 18 year old applicants from England by POLAR3 quintile: 6 days after A level results day

Placed 18 year old applicants: change relative to 2017 cycle totals

- Quintile 1
- Quintile 2
- Quintile 3
- Quintile 4
- Quintile 5



Note: The percentage change is not plotted in the above chart for groups with fewer than 30 placed applicants in any one cycle.

## P.2 Placed 18 year old applicants from England by POLAR3 quintile: 6 days after A level results day

Applicant Status	POLAR3	2009	2010	2011	2012	2013	2014	2015	2016	2017	2018
Placed	Quintile 1	16,440	17,190	18,050	17,900	18,890	20,460	21,360	21,750	22,400	22,030
	Quintile 2	24,840	25,160	26,420	25,900	27,600	28,900	30,260	30,750	30,980	30,940
	Quintile 3	32,690	32,970	34,250	33,620	35,480	36,520	38,500	39,180	40,020	38,980
	Quintile 4	40,630	40,980	42,500	40,850	42,580	42,890	45,110	46,150	46,210	45,410
	Quintile 5	55,450	55,160	57,460	55,480	56,450	57,450	59,730	61,230	62,130	61,410

## P.3 Placed 18 year old applicants from England by POLAR3 quintile: 6 days after A level results day

Placed 18 year old applicants: change relative to 2017 cycle totals

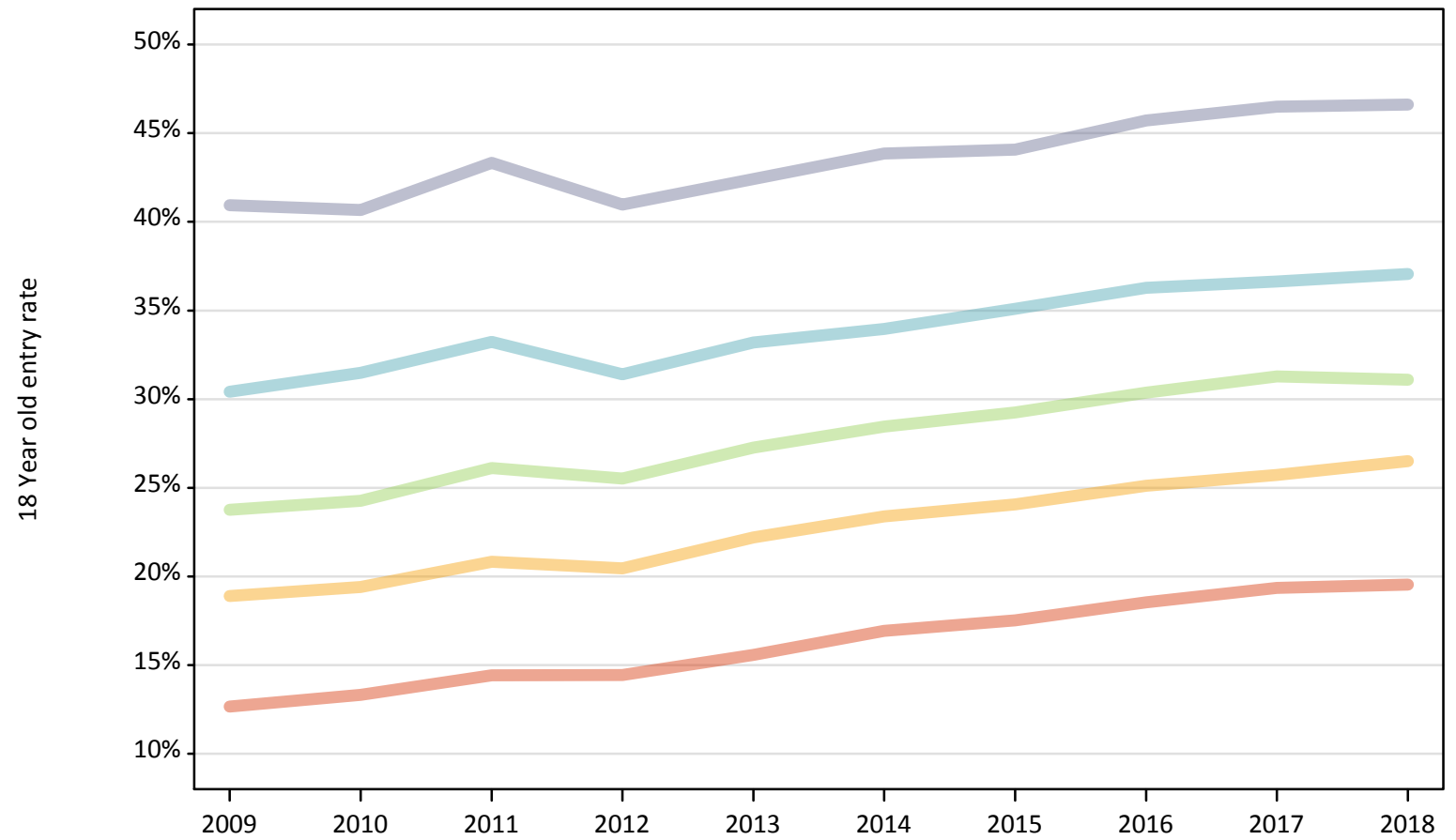
Applicant Status	POLAR3	2009	2010	2011	2012	2013	2014	2015	2016	2017	2018
Placed	Quintile 1	-27%	-23%	-19%	-20%	-16%	-9%	-5%	-3%	0%	-2%
	Quintile 2	-20%	-19%	-15%	-16%	-11%	-7%	-2%	-1%	0%	-0%
	Quintile 3	-18%	-18%	-14%	-16%	-11%	-9%	-4%	-2%	0%	-3%
	Quintile 4	-12%	-11%	-8%	-12%	-8%	-7%	-2%	-0%	0%	-2%
	Quintile 5	-11%	-11%	-8%	-11%	-9%	-8%	-4%	-1%	0%	-1%

Note: The percentage change is not recorded in the above table for groups with fewer than 10 placed applicants in that cycle or in the 2017 cycle.

## P.4 Placed 18 year old applicants from England by POLAR3 quintile: 6 days after A level results day

Placed 18 year old applicants: entry rate

- Quintile 1
- Quintile 2
- Quintile 3
- Quintile 4
- Quintile 5



**P.5 Placed 18 year old applicants from England by POLAR3 quintile: 6 days after A level results day**

Placed 18 year old applicants: entry rate

Applicant Status	POLAR3	2009	2010	2011	2012	2013	2014	2015	2016	2017	2018
Placed	Quintile 1	12.7%	13.3%	14.4%	14.4%	15.6%	16.9%	17.5%	18.5%	19.3%	19.5%
	Quintile 2	18.9%	19.4%	20.8%	20.5%	22.2%	23.4%	24.1%	25.1%	25.7%	26.5%
	Quintile 3	23.8%	24.3%	26.1%	25.5%	27.3%	28.4%	29.2%	30.4%	31.3%	31.1%
	Quintile 4	30.4%	31.5%	33.2%	31.4%	33.2%	34.0%	35.1%	36.3%	36.6%	37.1%
	Quintile 5	40.9%	40.7%	43.3%	41.0%	42.4%	43.8%	44.1%	45.7%	46.5%	46.6%

**P.6 Placed 18 year old applicants from England by POLAR3 quintile: 6 days after A level results day**

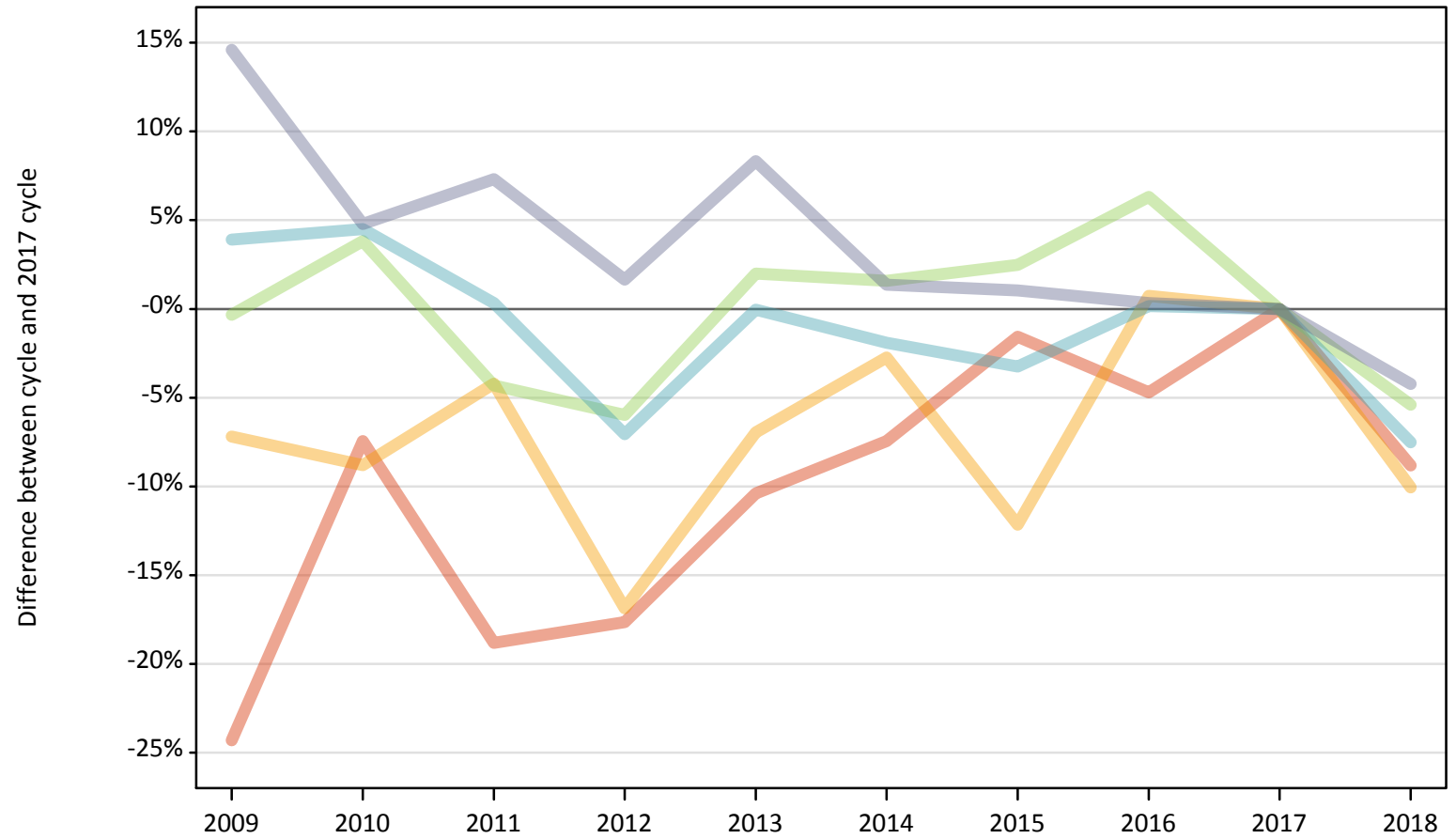
Placed 18 year old applicants: entry rate (indexed to 100 = Quintile 1)

Applicant Status	POLAR3	2009	2010	2011	2012	2013	2014	2015	2016	2017	2018
Placed	Quintile 1	100	100	100	100	100	100	100	100	100	100
	Quintile 2	149	146	144	142	142	138	137	135	133	136
	Quintile 3	188	182	181	177	175	168	167	164	162	159
	Quintile 4	240	236	231	218	213	201	200	196	189	190
	Quintile 5	323	305	301	284	272	259	252	247	240	239

**P.7 Placed 18 year old applicants from Northern Ireland by POLAR3 quintile: 6 days after A level results day**

Placed 18 year old applicants: change relative to 2017 cycle totals

- Quintile 1
- Quintile 2
- Quintile 3
- Quintile 4
- Quintile 5



Note: The percentage change is not plotted in the above chart for groups with fewer than 30 placed applicants in any one cycle.

**P.8 Placed 18 year old applicants from Northern Ireland by POLAR3 quintile: 6 days after A level results day**

Applicant Status	POLAR3	2009	2010	2011	2012	2013	2014	2015	2016	2017	2018
Placed	Quintile 1	390	470	410	420	460	470	500	490	510	470
	Quintile 2	750	740	770	670	750	780	710	810	810	730
	Quintile 3	1,200	1,250	1,150	1,130	1,230	1,220	1,240	1,280	1,210	1,140
	Quintile 4	2,560	2,570	2,470	2,290	2,460	2,420	2,380	2,470	2,460	2,280
	Quintile 5	3,530	3,220	3,300	3,130	3,330	3,120	3,110	3,090	3,080	2,950

**P.9 Placed 18 year old applicants from Northern Ireland by POLAR3 quintile: 6 days after A level results day**

Placed 18 year old applicants: change relative to 2017 cycle totals

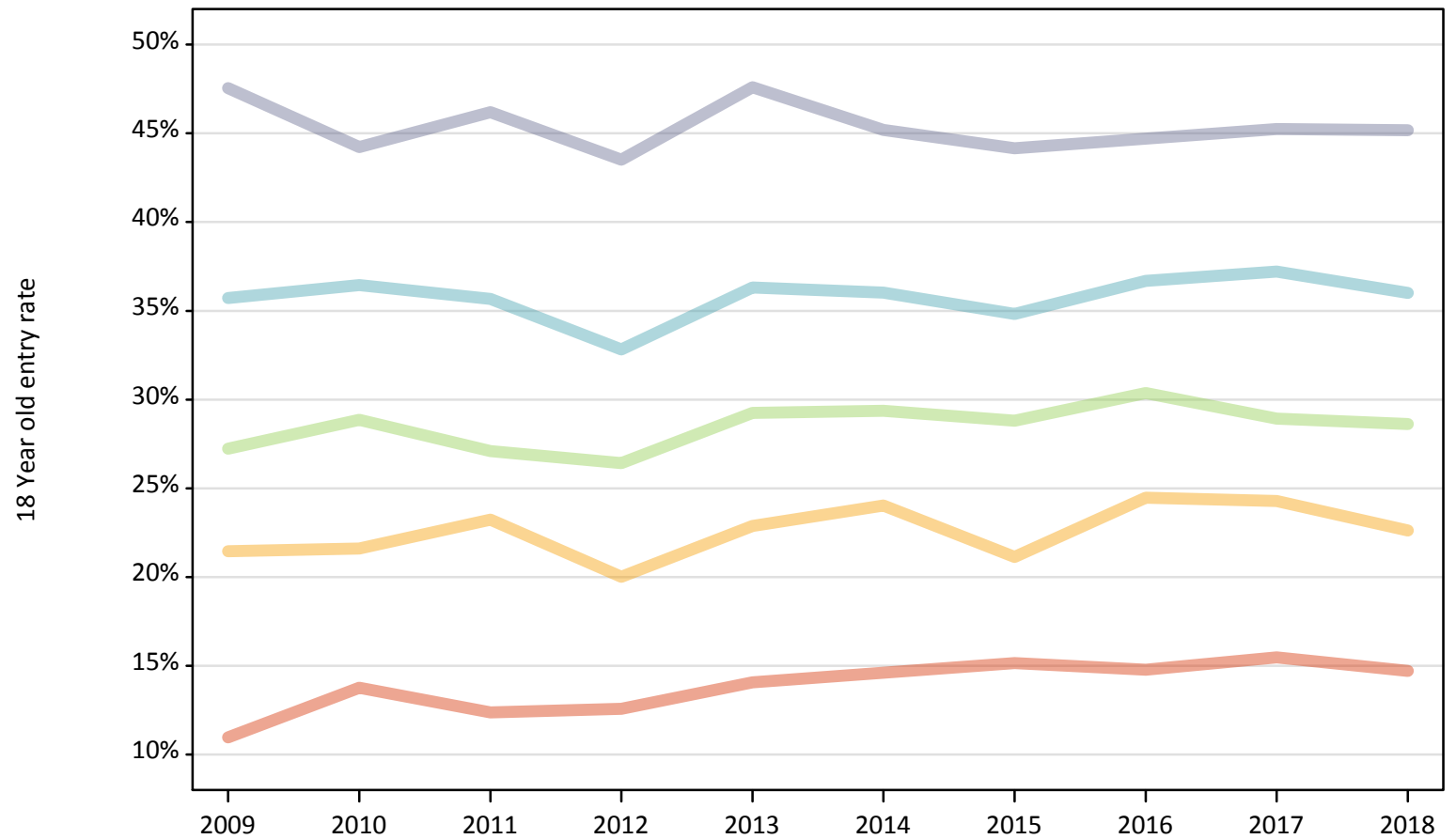
Applicant Status	POLAR3	2009	2010	2011	2012	2013	2014	2015	2016	2017	2018
Placed	Quintile 1	-24%	-7%	-19%	-18%	-10%	-7%	-2%	-5%	0%	-9%
	Quintile 2	-7%	-9%	-4%	-17%	-7%	-3%	-12%	1%	0%	-10%
	Quintile 3	-0%	4%	-4%	-6%	2%	2%	2%	6%	0%	-5%
	Quintile 4	4%	5%	0%	-7%	-0%	-2%	-3%	0%	0%	-8%
	Quintile 5	15%	5%	7%	2%	8%	1%	1%	0%	0%	-4%

Note: The percentage change is not recorded in the above table for groups with fewer than 10 placed applicants in that cycle or in the 2017 cycle.

**P.10 Placed 18 year old applicants from Northern Ireland by POLAR3 quintile: 6 days after A level results day**

Placed 18 year old applicants: entry rate

- Quintile 1
- Quintile 2
- Quintile 3
- Quintile 4
- Quintile 5



**P.11 Placed 18 year old applicants from Northern Ireland by POLAR3 quintile: 6 days after A level results day**

Placed 18 year old applicants: entry rate

Applicant Status	POLAR3	2009	2010	2011	2012	2013	2014	2015	2016	2017	2018
Placed	Quintile 1	11.0%	13.8%	12.4%	12.6%	14.1%	14.6%	15.1%	14.8%	15.5%	14.7%
	Quintile 2	21.4%	21.6%	23.2%	20.0%	22.9%	24.0%	21.1%	24.5%	24.3%	22.6%
	Quintile 3	27.2%	28.9%	27.1%	26.4%	29.2%	29.4%	28.8%	30.4%	28.9%	28.6%
	Quintile 4	35.7%	36.4%	35.7%	32.8%	36.3%	36.0%	34.8%	36.7%	37.2%	36.0%
	Quintile 5	47.5%	44.2%	46.2%	43.5%	47.6%	45.2%	44.2%	44.7%	45.2%	45.2%

**P.12 Placed 18 year old applicants from Northern Ireland by POLAR3 quintile: 6 days after A level results day**

Placed 18 year old applicants: entry rate (indexed to 100 = Quintile 1)

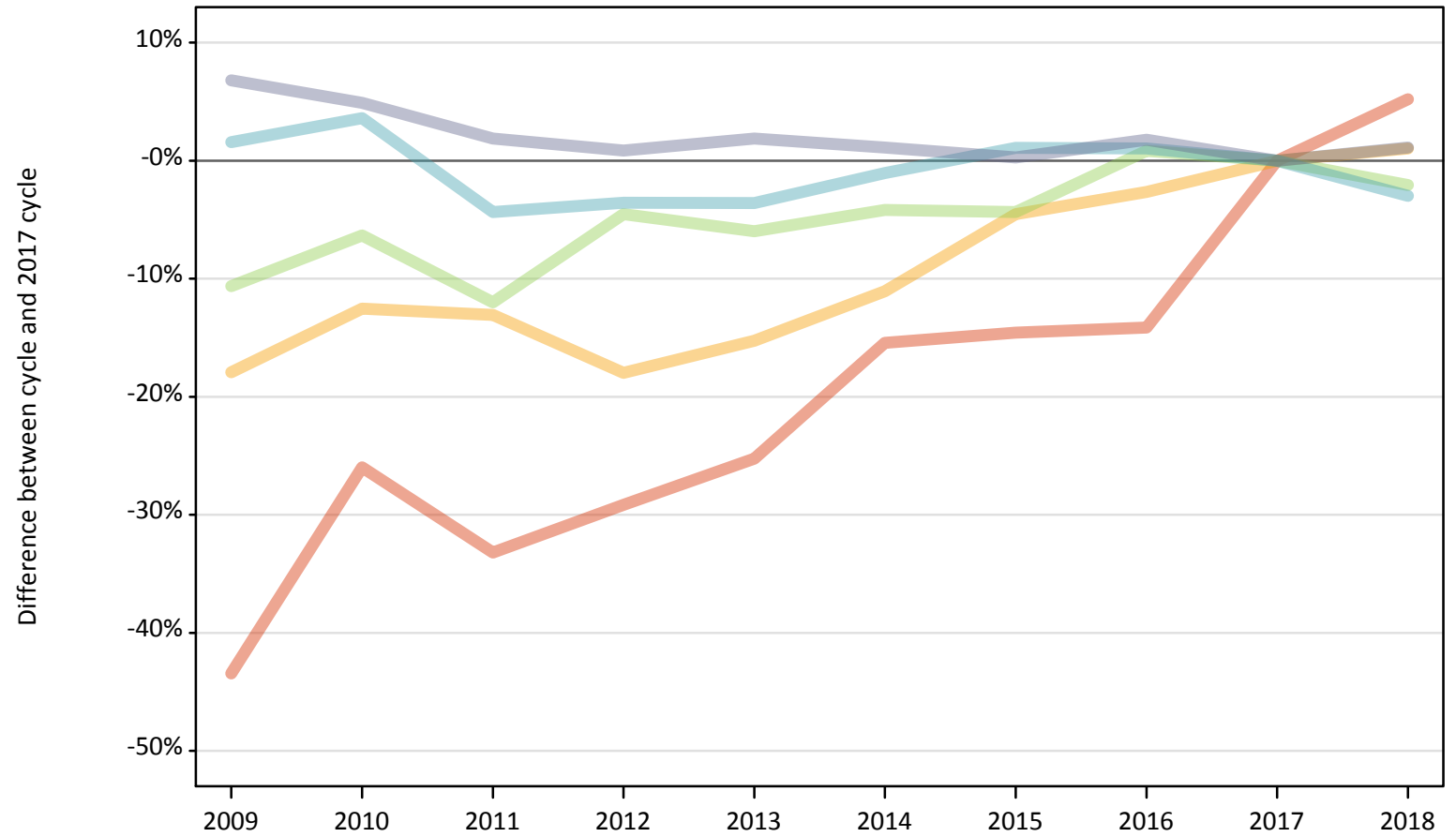
Applicant Status	POLAR3	2009	2010	2011	2012	2013	2014	2015	2016	2017	2018
Placed	Quintile 1	100	100	100	100	100	100	100	100	100	100
	Quintile 2	195	157	188	159	163	165	139	166	157	154
	Quintile 3	248	210	219	210	208	201	190	205	187	195
	Quintile 4	326	265	288	261	258	247	230	248	241	245
	Quintile 5	433	321	373	346	339	310	291	302	293	307



**P.13 Placed 18 year old applicants from Scotland by POLAR3 quintile: 6 days after A level results day**

Placed 18 year old applicants: change relative to 2017 cycle totals

- Quintile 1
- Quintile 2
- Quintile 3
- Quintile 4
- Quintile 5



Note: The percentage change is not plotted in the above chart for groups with fewer than 30 placed applicants in any one cycle.

**P.14 Placed 18 year old applicants from Scotland by POLAR3 quintile: 6 days after A level results day**

Applicant Status	POLAR3	2009	2010	2011	2012	2013	2014	2015	2016	2017	2018
Placed	Quintile 1	390	510	460	490	520	590	590	600	690	730
	Quintile 2	1,270	1,350	1,340	1,270	1,310	1,380	1,480	1,510	1,550	1,560
	Quintile 3	2,030	2,130	2,000	2,170	2,140	2,180	2,180	2,290	2,280	2,230
	Quintile 4	3,450	3,520	3,250	3,270	3,270	3,360	3,430	3,430	3,400	3,290
	Quintile 5	7,100	6,980	6,780	6,710	6,770	6,720	6,670	6,770	6,650	6,720

**P.15 Placed 18 year old applicants from Scotland by POLAR3 quintile: 6 days after A level results day**

Placed 18 year old applicants: change relative to 2017 cycle totals

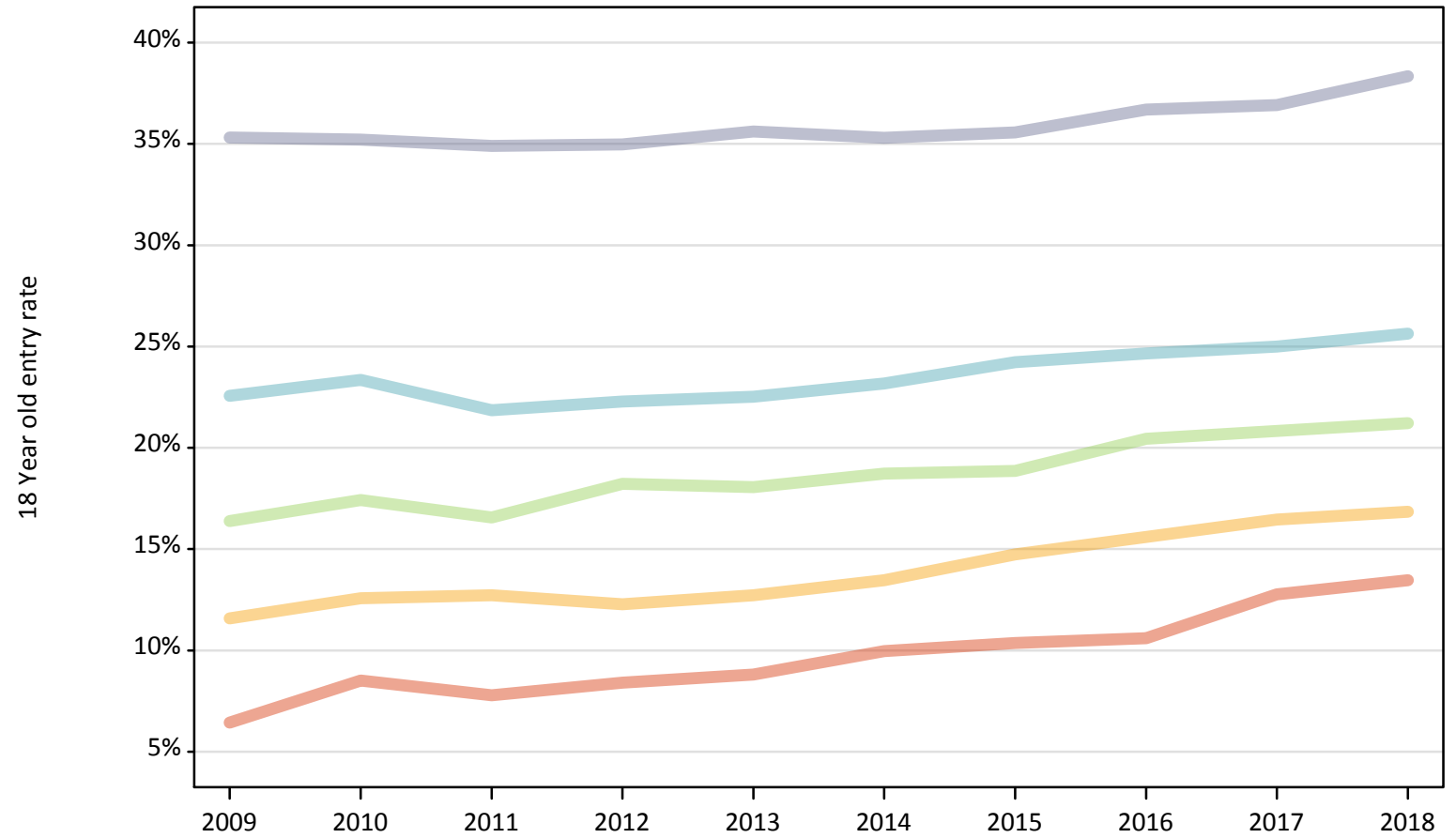
Applicant Status	POLAR3	2009	2010	2011	2012	2013	2014	2015	2016	2017	2018
Placed	Quintile 1	-43%	-26%	-33%	-29%	-25%	-15%	-15%	-14%	0%	5%
	Quintile 2	-18%	-13%	-13%	-18%	-15%	-11%	-5%	-3%	0%	1%
	Quintile 3	-11%	-6%	-12%	-5%	-6%	-4%	-4%	1%	0%	-2%
	Quintile 4	2%	4%	-4%	-4%	-4%	-1%	1%	1%	0%	-3%
	Quintile 5	7%	5%	2%	1%	2%	1%	0%	2%	0%	1%

Note: The percentage change is not recorded in the above table for groups with fewer than 10 placed applicants in that cycle or in the 2017 cycle.

**P.16 Placed 18 year old applicants from Scotland by POLAR3 quintile: 6 days after A level results day**

Placed 18 year old applicants: entry rate

- Quintile 1
- Quintile 2
- Quintile 3
- Quintile 4
- Quintile 5



**P.17 Placed 18 year old applicants from Scotland by POLAR3 quintile: 6 days after A level results day**

Placed 18 year old applicants: entry rate

Applicant Status	POLAR3	2009	2010	2011	2012	2013	2014	2015	2016	2017	2018
Placed	Quintile 1	6.4%	8.5%	7.8%	8.4%	8.8%	10.0%	10.4%	10.6%	12.8%	13.5%
	Quintile 2	11.6%	12.6%	12.7%	12.3%	12.7%	13.5%	14.7%	15.6%	16.5%	16.8%
	Quintile 3	16.4%	17.4%	16.6%	18.2%	18.1%	18.7%	18.9%	20.4%	20.8%	21.2%
	Quintile 4	22.6%	23.4%	21.9%	22.3%	22.5%	23.2%	24.2%	24.7%	25.0%	25.6%
	Quintile 5	35.3%	35.2%	34.9%	35.0%	35.6%	35.3%	35.6%	36.7%	36.9%	38.3%

**P.18 Placed 18 year old applicants from Scotland by POLAR3 quintile: 6 days after A level results day**

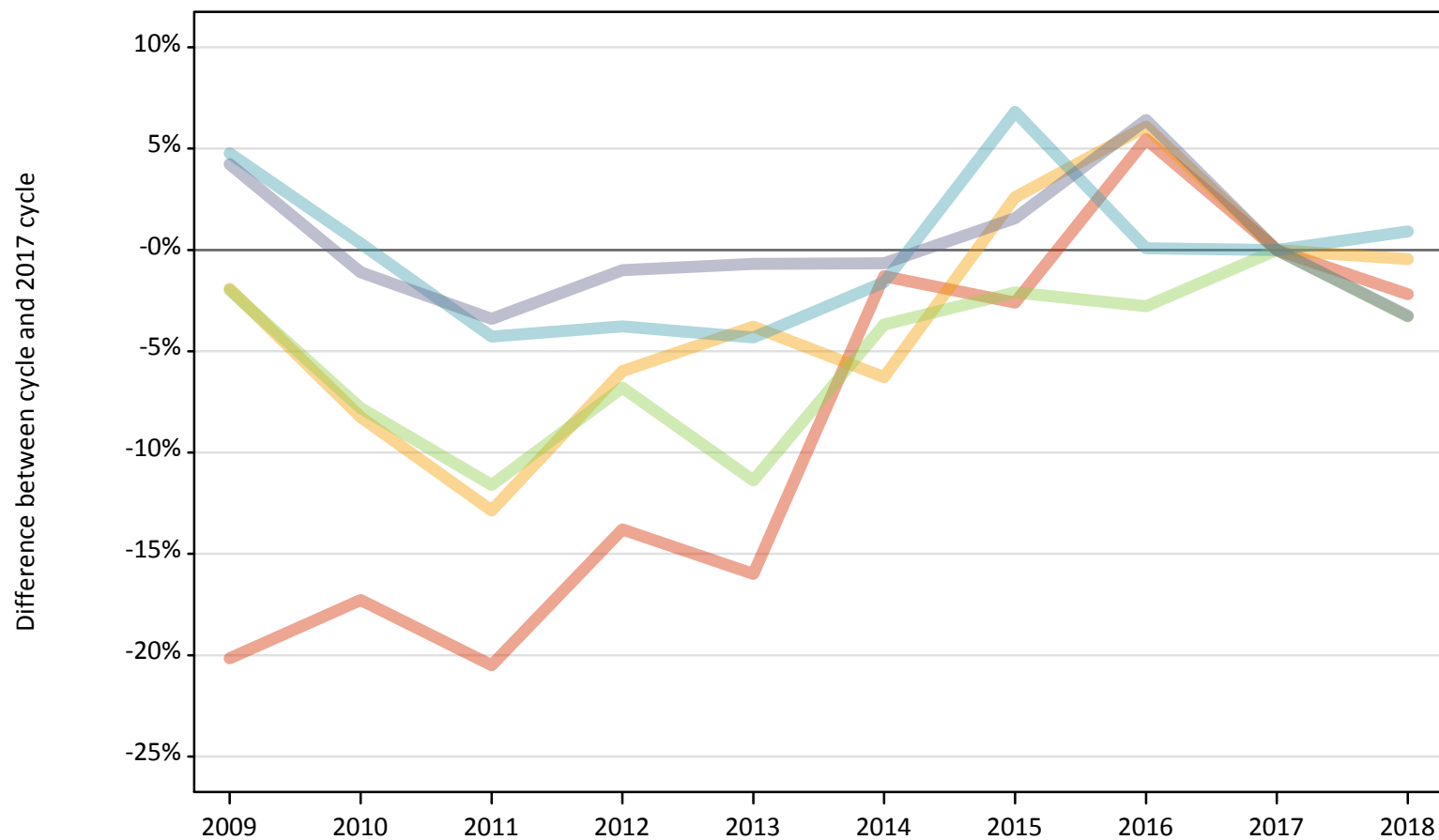
Placed 18 year old applicants: entry rate (indexed to 100 = Quintile 1)

Applicant Status	POLAR3	2009	2010	2011	2012	2013	2014	2015	2016	2017	2018
Placed	Quintile 1	100	100	100	100	100	100	100	100	100	100
	Quintile 2	180	148	164	146	144	135	142	147	129	125
	Quintile 3	255	205	213	217	205	188	182	193	163	158
	Quintile 4	351	274	281	265	256	233	234	232	196	190
	Quintile 5	549	414	448	416	405	354	343	346	289	285

### P.19 Placed 18 year old applicants from Wales by POLAR3 quintile: 6 days after A level results day

Placed 18 year old applicants: change relative to 2017 cycle totals

- Quintile 1
- Quintile 2
- Quintile 3
- Quintile 4
- Quintile 5



Note: The percentage change is not plotted in the above chart for groups with fewer than 30 placed applicants in any one cycle.

**P.20 Placed 18 year old applicants from Wales by POLAR3 quintile: 6 days after A level results day**

Applicant Status	POLAR3	2009	2010	2011	2012	2013	2014	2015	2016	2017	2018
Placed	Quintile 1	1,170	1,210	1,160	1,260	1,230	1,450	1,430	1,540	1,460	1,430
	Quintile 2	2,000	1,870	1,780	1,920	1,960	1,910	2,090	2,160	2,040	2,030
	Quintile 3	1,730	1,630	1,560	1,650	1,570	1,700	1,730	1,720	1,770	1,710
	Quintile 4	2,310	2,210	2,110	2,120	2,110	2,170	2,350	2,200	2,200	2,220
	Quintile 5	2,730	2,590	2,530	2,590	2,600	2,600	2,660	2,790	2,620	2,530

**P.21 Placed 18 year old applicants from Wales by POLAR3 quintile: 6 days after A level results day**

Placed 18 year old applicants: change relative to 2017 cycle totals

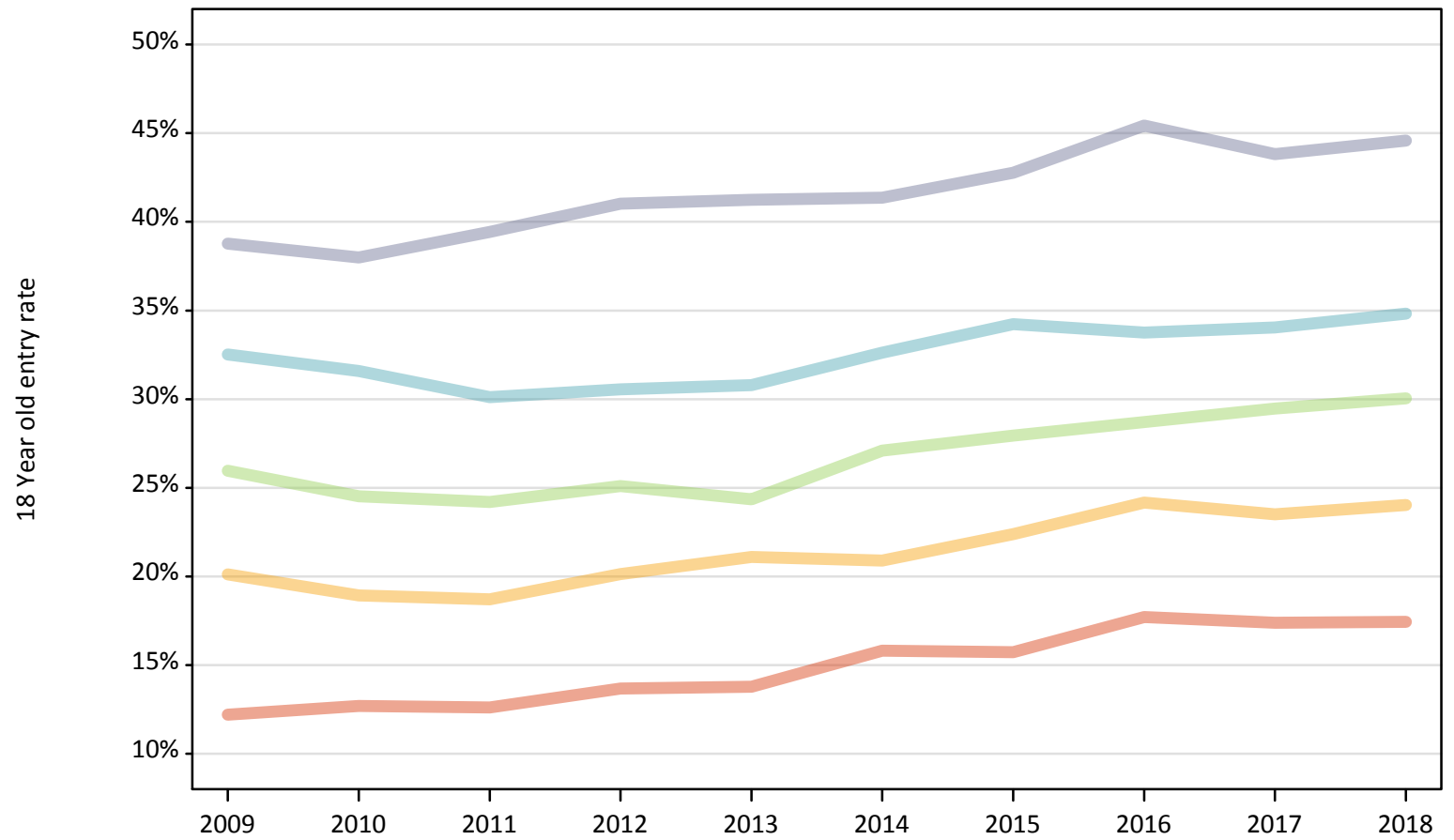
Applicant Status	POLAR3	2009	2010	2011	2012	2013	2014	2015	2016	2017	2018
Placed	Quintile 1	-20%	-17%	-20%	-14%	-16%	-1%	-3%	5%	0%	-2%
	Quintile 2	-2%	-8%	-13%	-6%	-4%	-6%	3%	6%	0%	-0%
	Quintile 3	-2%	-8%	-12%	-7%	-11%	-4%	-2%	-3%	0%	-3%
	Quintile 4	5%	0%	-4%	-4%	-4%	-2%	7%	0%	0%	1%
	Quintile 5	4%	-1%	-3%	-1%	-1%	-1%	2%	6%	0%	-3%

Note: The percentage change is not recorded in the above table for groups with fewer than 10 placed applicants in that cycle or in the 2017 cycle.

**P.22 Placed 18 year old applicants from Wales by POLAR3 quintile: 6 days after A level results day**

Placed 18 year old applicants: entry rate

- Quintile 1
- Quintile 2
- Quintile 3
- Quintile 4
- Quintile 5



**P.23 Placed 18 year old applicants from Wales by POLAR3 quintile: 6 days after A level results day**

Placed 18 year old applicants: entry rate

Applicant Status	POLAR3	2009	2010	2011	2012	2013	2014	2015	2016	2017	2018
Placed	Quintile 1	12.2%	12.7%	12.6%	13.7%	13.8%	15.8%	15.7%	17.7%	17.4%	17.4%
	Quintile 2	20.1%	18.9%	18.7%	20.1%	21.1%	20.9%	22.4%	24.2%	23.5%	24.0%
	Quintile 3	26.0%	24.5%	24.2%	25.1%	24.3%	27.1%	27.9%	28.7%	29.5%	30.0%
	Quintile 4	32.5%	31.6%	30.1%	30.6%	30.8%	32.6%	34.2%	33.8%	34.0%	34.8%
	Quintile 5	38.8%	38.0%	39.4%	41.0%	41.2%	41.4%	42.8%	45.4%	43.8%	44.6%

**P.24 Placed 18 year old applicants from Wales by POLAR3 quintile: 6 days after A level results day**

Placed 18 year old applicants: entry rate (indexed to 100 = Quintile 1)

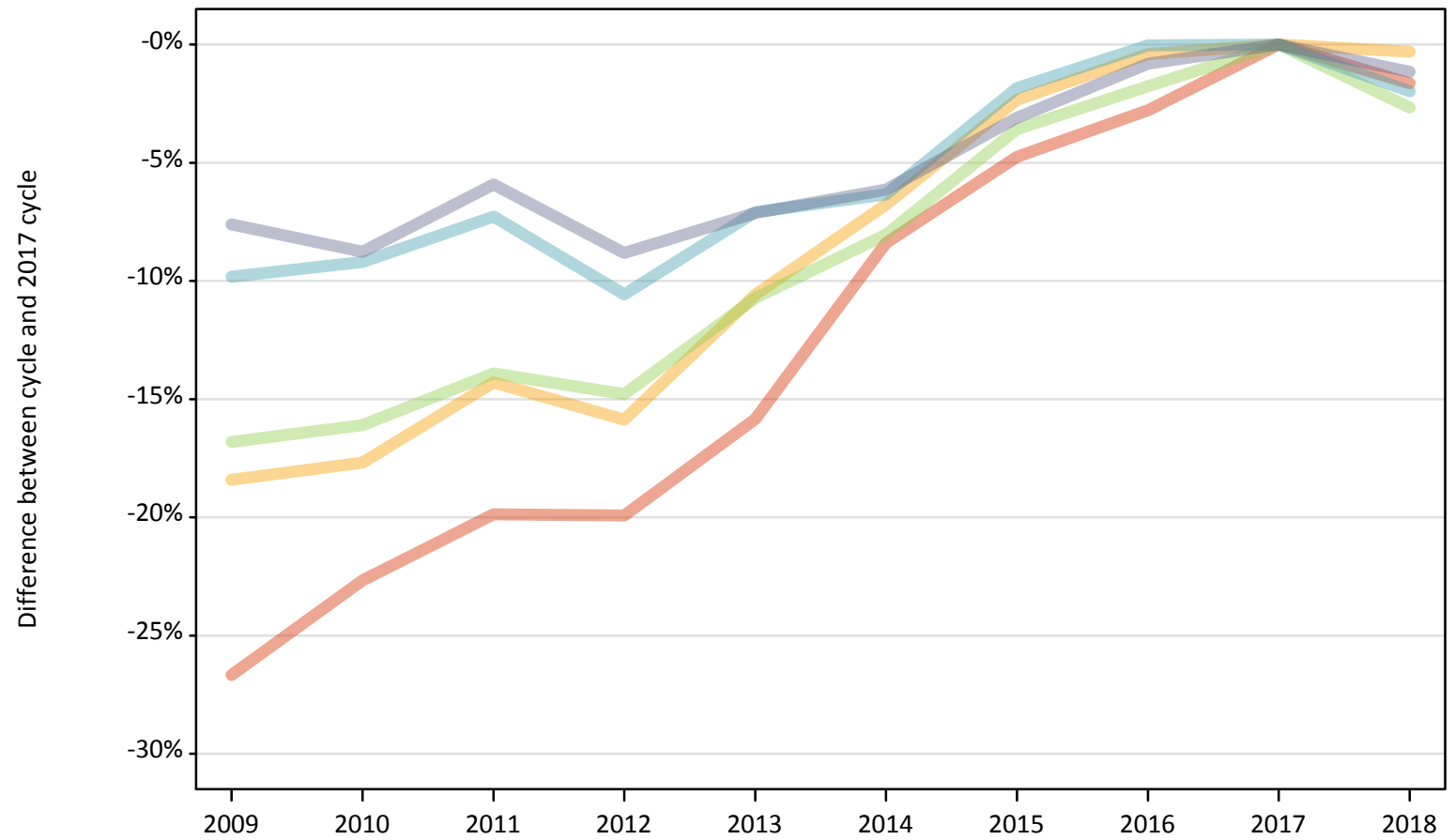
Applicant Status	POLAR3	2009	2010	2011	2012	2013	2014	2015	2016	2017	2018
Placed	Quintile 1	100	100	100	100	100	100	100	100	100	100
	Quintile 2	165	149	148	147	153	132	142	136	135	138
	Quintile 3	213	193	192	183	177	171	178	162	170	172
	Quintile 4	267	249	239	223	224	206	218	191	196	200
	Quintile 5	318	299	313	300	299	262	272	257	252	256



### P.25 Placed 18 year old applicants from the UK by POLAR3 quintile: 6 days after A level results day

Placed 18 year old applicants: change relative to 2017 cycle totals

- Quintile 1
- Quintile 2
- Quintile 3
- Quintile 4
- Quintile 5



Note: The percentage change is not plotted in the above chart for groups with fewer than 30 placed applicants in any one cycle.

**P.26 Placed 18 year old applicants from the UK by POLAR3 quintile: 6 days after A level results day**

Applicant Status	POLAR3	2009	2010	2011	2012	2013	2014	2015	2016	2017	2018
Placed	Quintile 1	18,380	19,390	20,090	20,080	21,100	22,960	23,880	24,370	25,070	24,660
	Quintile 2	28,860	29,110	30,310	29,750	31,630	32,970	34,540	35,220	35,370	35,260
	Quintile 3	37,660	37,980	38,970	38,580	40,410	41,630	43,650	44,470	45,270	44,060
	Quintile 4	48,940	49,280	50,320	48,530	50,420	50,830	53,280	54,250	54,270	53,200
	Quintile 5	68,800	67,950	70,060	67,900	69,160	69,900	72,160	73,870	74,470	73,610

**P.27 Placed 18 year old applicants from the UK by POLAR3 quintile: 6 days after A level results day**

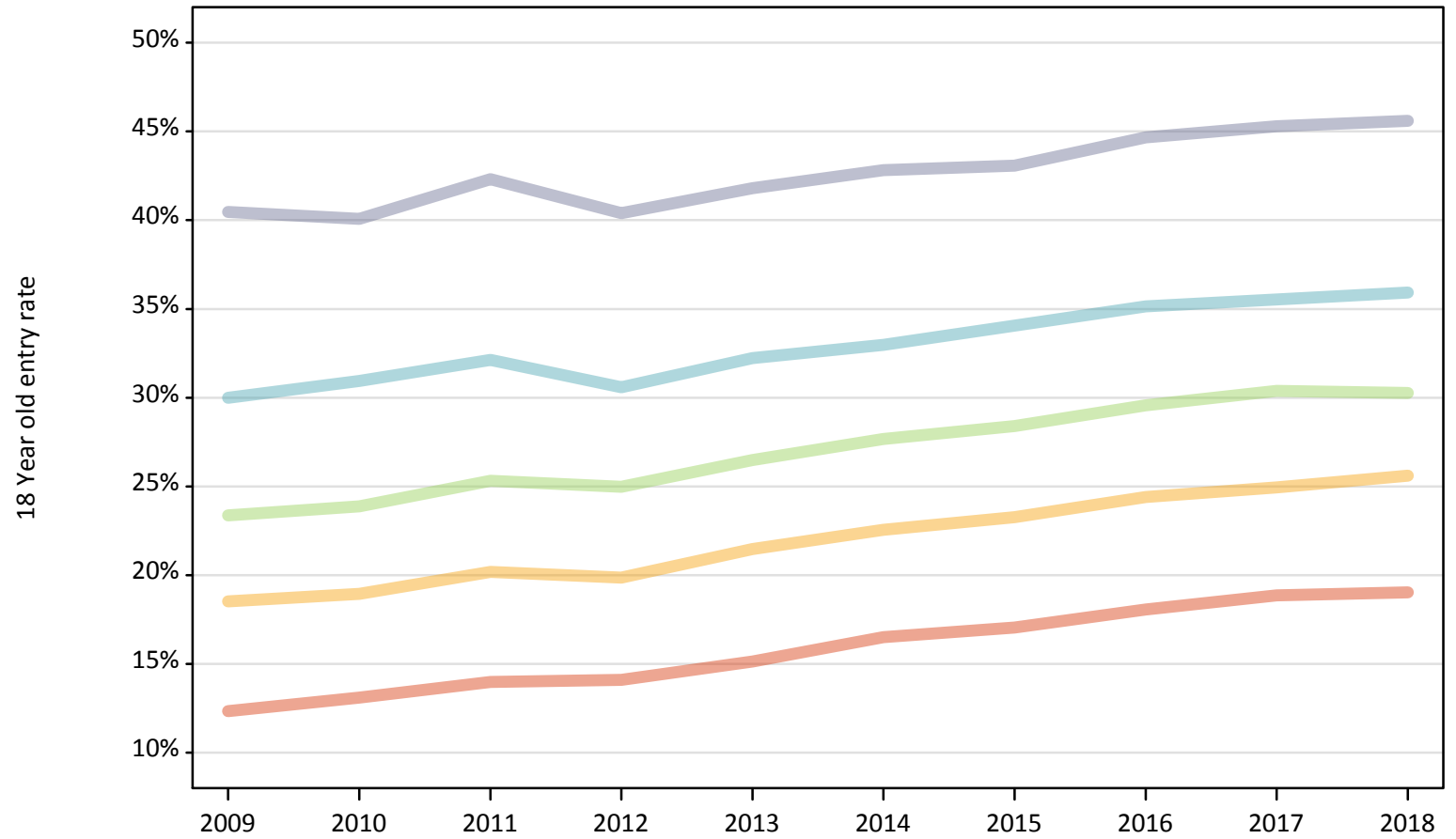
Placed 18 year old applicants: change relative to 2017 cycle totals

Applicant Status	POLAR3	2009	2010	2011	2012	2013	2014	2015	2016	2017	2018
Placed	Quintile 1	-27%	-23%	-20%	-20%	-16%	-8%	-5%	-3%	0%	-2%
	Quintile 2	-18%	-18%	-14%	-16%	-11%	-7%	-2%	-0%	0%	-0%
	Quintile 3	-17%	-16%	-14%	-15%	-11%	-8%	-4%	-2%	0%	-3%
	Quintile 4	-10%	-9%	-7%	-11%	-7%	-6%	-2%	-0%	0%	-2%
	Quintile 5	-8%	-9%	-6%	-9%	-7%	-6%	-3%	-1%	0%	-1%

Note: The percentage change is not recorded in the above table for groups with fewer than 10 placed applicants in that cycle or in the 2017 cycle.

**P.28 Placed 18 year old applicants from the UK by POLAR3 quintile: 6 days after A level results day**  
Placed 18 year old applicants: entry rate

- Quintile 1
- Quintile 2
- Quintile 3
- Quintile 4
- Quintile 5



**P.29 Placed 18 year old applicants from the UK by POLAR3 quintile: 6 days after A level results day**

Placed 18 year old applicants: entry rate

Applicant Status	POLAR3	2009	2010	2011	2012	2013	2014	2015	2016	2017	2018
Placed	Quintile 1	12.3%	13.1%	14.0%	14.1%	15.1%	16.5%	17.1%	18.1%	18.9%	19.0%
	Quintile 2	18.5%	18.9%	20.2%	19.9%	21.5%	22.6%	23.3%	24.4%	24.9%	25.6%
	Quintile 3	23.4%	23.9%	25.3%	25.0%	26.5%	27.7%	28.4%	29.6%	30.4%	30.3%
	Quintile 4	30.0%	30.9%	32.1%	30.6%	32.2%	33.0%	34.1%	35.1%	35.5%	35.9%
	Quintile 5	40.5%	40.1%	42.3%	40.4%	41.8%	42.8%	43.1%	44.7%	45.3%	45.6%

**P.30 Placed 18 year old applicants from the UK by POLAR3 quintile: 6 days after A level results day**

Placed 18 year old applicants: entry rate (indexed to 100 = Quintile 1)

Applicant Status	POLAR3	2009	2010	2011	2012	2013	2014	2015	2016	2017	2018
Placed	Quintile 1	100	100	100	100	100	100	100	100	100	100
	Quintile 2	150	145	144	141	142	137	136	135	132	135
	Quintile 3	190	182	181	177	175	168	167	164	161	159
	Quintile 4	243	236	230	217	213	200	200	195	188	189
	Quintile 5	328	306	303	287	276	259	253	247	240	240