

# Daily Clearing Analysis: Age

Analysis at 00:05 on Wednesday 22 August 2018 (6 days after A level results day)

C.1 Placed applicants by country of domicile and age group, 2018 cycle (6 days after A level results day)

Domicile of applicant	Age group				
	17 and under	18	19	20 to 24	25 and over
England	660	199,330	65,170	45,450	27,160
Northern Ireland	20	7,580	2,150	2,210	730
Scotland	510	14,580	4,470	8,050	6,380
Wales	20	9,960	3,220	2,620	2,010
UK	1,210	231,440	75,020	58,330	36,290

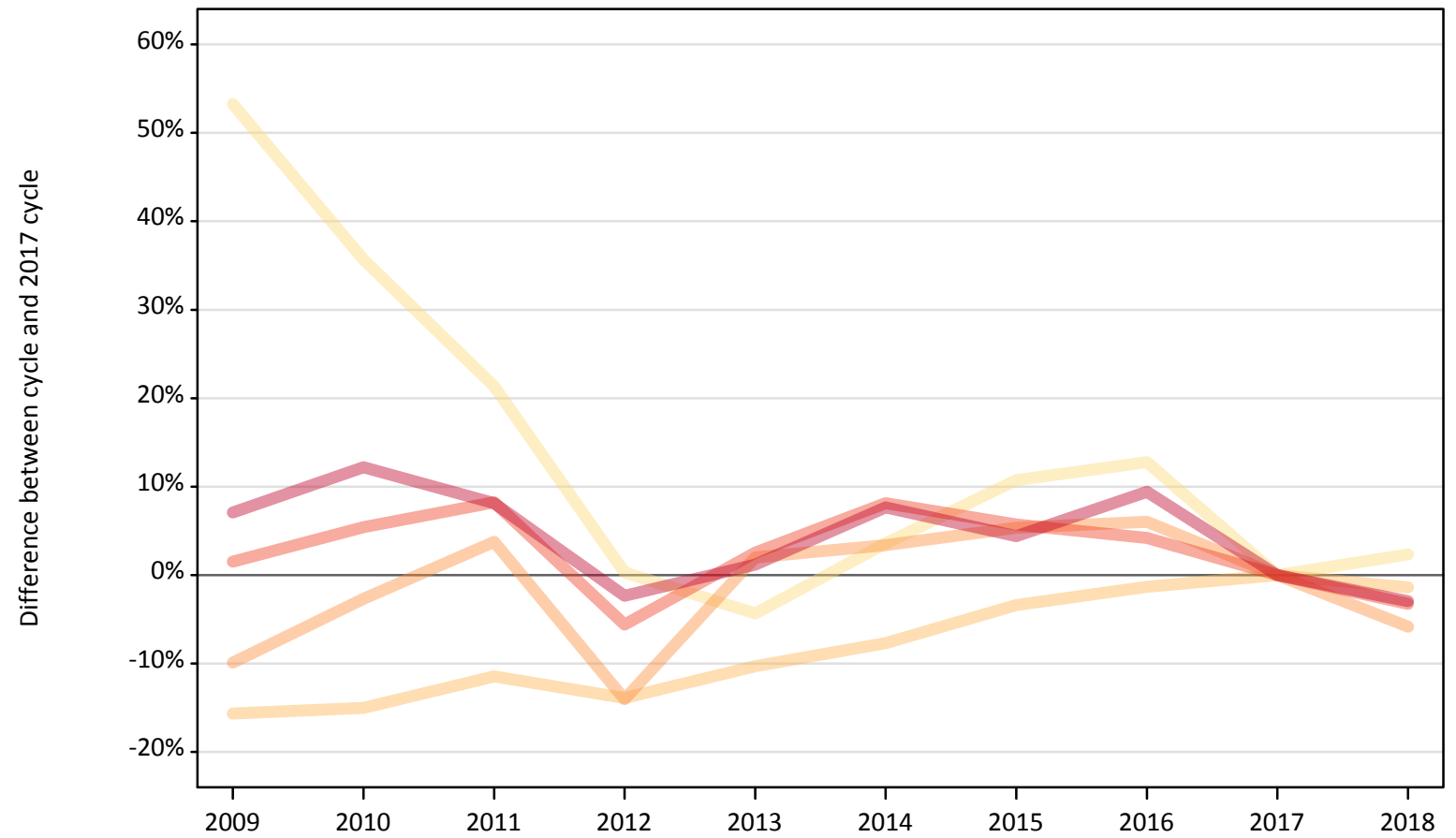
C.2 Proportion of 18 year old population placed by country of domicile, 2018 cycle (6 days after A level results day)

Domicile of applicant	Age group	2018
England	18	32.7%
Northern Ireland	18	32.7%
Scotland	18	26.2%
Wales	18	28.9%

### C.3 Placed applicants from England by age group at 6 days after A level results day

Selected age groups: difference between cycle and 2017 cycle

- 17 and under
- 18
- 19
- 20 to 24
- 25 and over



Note: The percentage change is not plotted in the above chart for groups with fewer than 30 placed applicants in any one cycle.

#### C.4 Placed applicants from England by age group at 6 days after A level results day

All age groups

Domicile of applicant	Age group	2009	2010	2011	2012	2013	2014	2015	2016	2017	2018
England	17 and under	980	870	780	640	610	670	710	720	640	660
	18	170,500	171,800	179,000	174,060	181,290	186,570	195,310	199,450	202,160	199,330
	19	62,340	67,350	71,800	59,480	70,590	71,540	72,900	73,370	69,200	65,170
	20 to 24	47,700	49,530	50,840	44,360	48,170	50,800	49,660	48,960	46,980	45,450
	25 and over	29,970	31,400	30,260	27,330	28,320	30,120	29,210	30,620	27,990	27,160

#### C.5 Placed applicants from England by age group at 6 days after A level results day

Selected age groups: difference between cycle and 2017 cycle

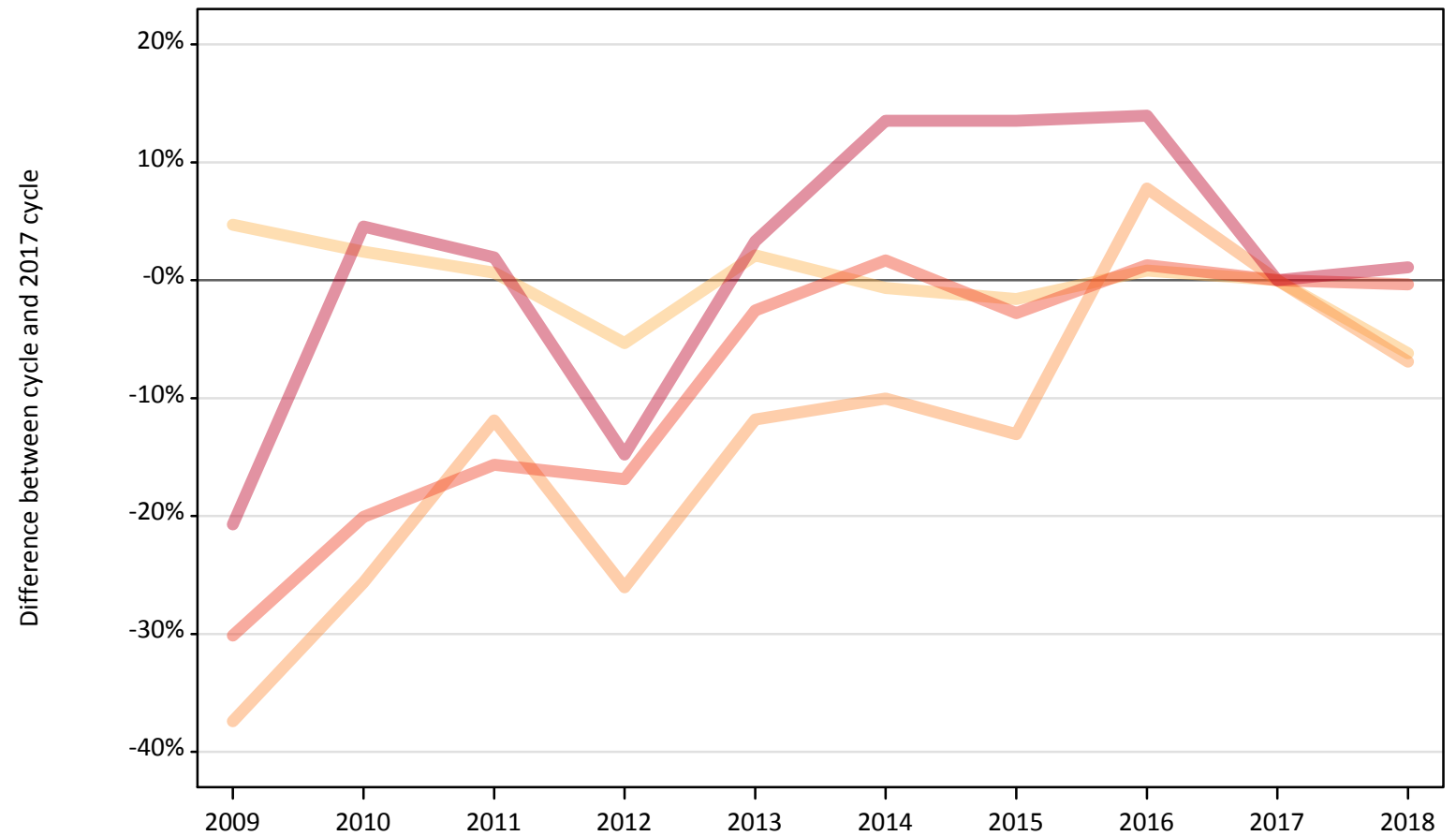
Domicile of applicant	Age group	2009	2010	2011	2012	2013	2014	2015	2016	2017	2018
England	17 and under	53%	36%	21%	0%	-4%	4%	11%	13%	0%	2%
	18	-16%	-15%	-11%	-14%	-10%	-8%	-3%	-1%	0%	-1%
	19	-10%	-3%	4%	-14%	2%	3%	5%	6%	0%	-6%
	20 to 24	2%	5%	8%	-6%	3%	8%	6%	4%	0%	-3%
	25 and over	7%	12%	8%	-2%	1%	8%	4%	9%	0%	-3%

Note: The percentage change is not recorded in the above table for groups with fewer than 10 placed applicants in that cycle or in the 2017 cycle.

### C.6 Placed applicants from Northern Ireland by age group at 6 days after A level results day

Selected age groups: difference between cycle and 2017 cycle

- 17 and under
- 18
- 19
- 20 to 24
- 25 and over



Note: The percentage change is not plotted in the above chart for groups with fewer than 30 placed applicants in any one cycle.

### C.7 Placed applicants from Northern Ireland by age group at 6 days after A level results day

All age groups

Domicile of applicant	Age group	2009	2010	2011	2012	2013	2014	2015	2016	2017	2018
Northern Ireland	17 and under	40	40	40	40	20	20	20	30	20	20
	18	8,460	8,270	8,130	7,650	8,250	8,020	7,950	8,140	8,080	7,580
	19	1,450	1,720	2,040	1,710	2,040	2,080	2,010	2,490	2,310	2,150
	20 to 24	1,550	1,770	1,870	1,840	2,160	2,250	2,160	2,250	2,220	2,210
	25 and over	570	760	740	620	750	820	820	830	720	730

### C.8 Placed applicants from Northern Ireland by age group at 6 days after A level results day

Selected age groups: difference between cycle and 2017 cycle

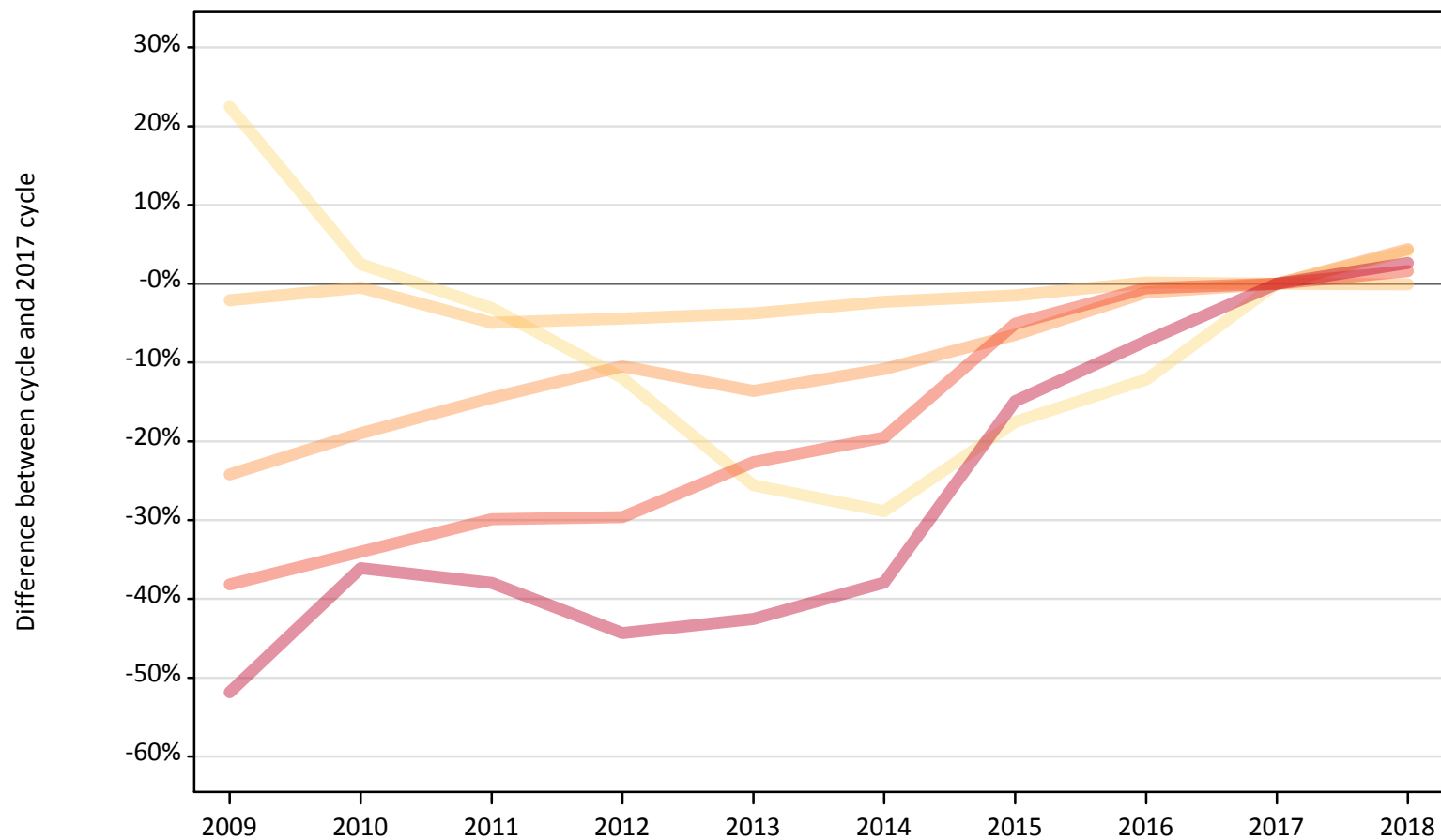
Domicile of applicant	Age group	2009	2010	2011	2012	2013	2014	2015	2016	2017	2018
Northern Ireland	17 and under	159%	112%	124%	147%	18%	6%	12%	82%	0%	41%
	18	5%	2%	1%	-5%	2%	-1%	-2%	1%	0%	-6%
	19	-37%	-26%	-12%	-26%	-12%	-10%	-13%	8%	0%	-7%
	20 to 24	-30%	-20%	-16%	-17%	-3%	2%	-3%	1%	0%	-0%
	25 and over	-21%	5%	2%	-15%	3%	14%	14%	14%	0%	1%

Note: The percentage change is not recorded in the above table for groups with fewer than 10 placed applicants in that cycle or in the 2017 cycle.

### C.9 Placed applicants from Scotland by age group at 6 days after A level results day

Selected age groups: difference between cycle and 2017 cycle

- 17 and under
- 18
- 19
- 20 to 24
- 25 and over



Note: The percentage change is not plotted in the above chart for groups with fewer than 30 placed applicants in any one cycle.

### C.10 Placed applicants from Scotland by age group at 6 days after A level results day

All age groups

Domicile of applicant	Age group	2009	2010	2011	2012	2013	2014	2015	2016	2017	2018
Scotland	17 and under	590	500	470	430	360	350	400	430	490	510
	18	14,290	14,520	13,870	13,950	14,040	14,260	14,380	14,620	14,590	14,580
	19	3,250	3,470	3,660	3,840	3,700	3,820	4,010	4,240	4,290	4,470
	20 to 24	4,900	5,230	5,550	5,580	6,130	6,380	7,520	7,880	7,920	8,050
	25 and over	3,000	3,970	3,860	3,460	3,570	3,860	5,290	5,770	6,220	6,380

### C.11 Placed applicants from Scotland by age group at 6 days after A level results day

Selected age groups: difference between cycle and 2017 cycle

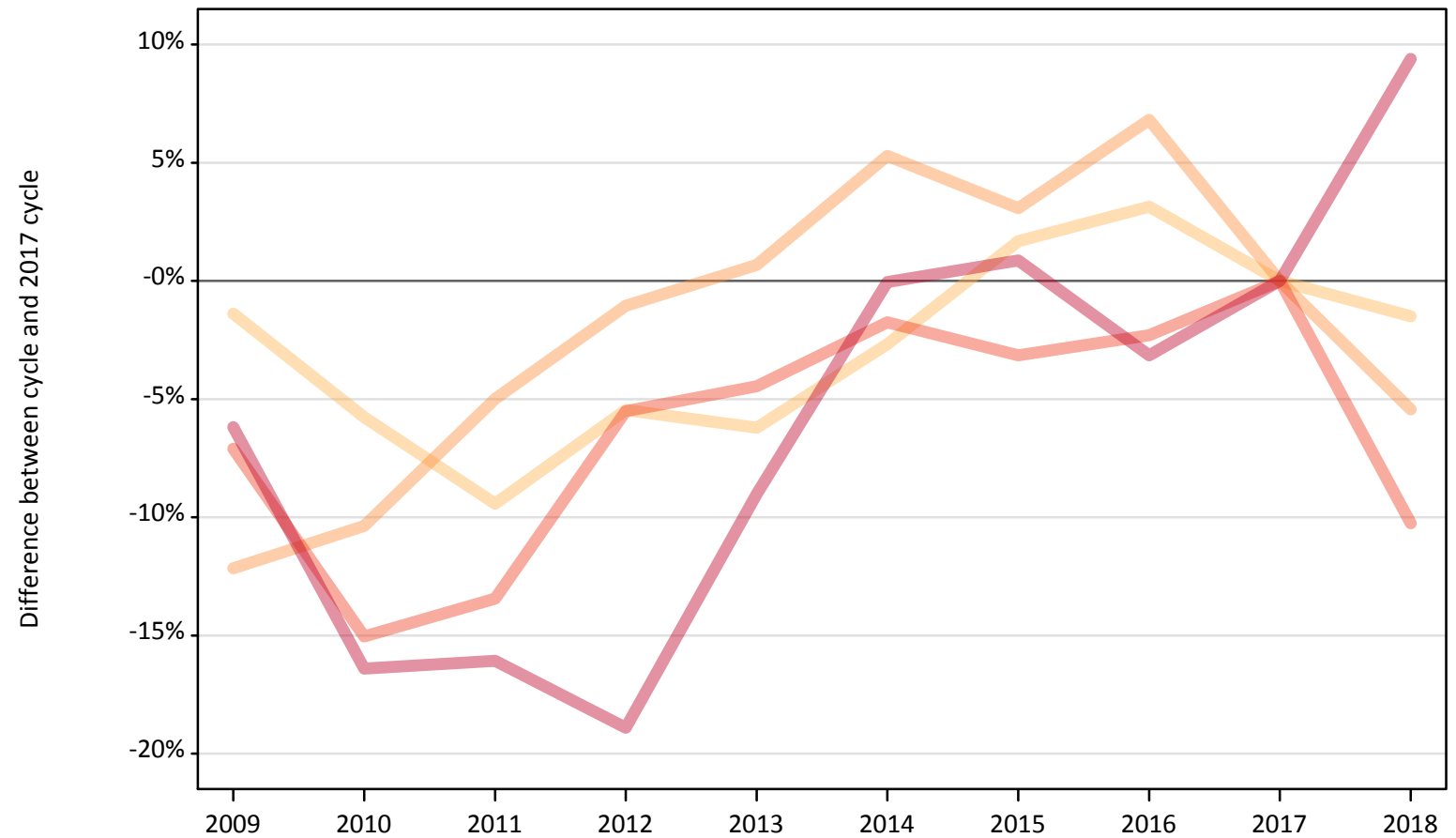
Domicile of applicant	Age group	2009	2010	2011	2012	2013	2014	2015	2016	2017	2018
Scotland	17 and under	22%	2%	-3%	-12%	-26%	-29%	-18%	-12%	0%	4%
	18	-2%	-0%	-5%	-4%	-4%	-2%	-1%	0%	0%	-0%
	19	-24%	-19%	-14%	-10%	-14%	-11%	-6%	-1%	0%	4%
	20 to 24	-38%	-34%	-30%	-30%	-23%	-20%	-5%	-1%	0%	2%
	25 and over	-52%	-36%	-38%	-44%	-43%	-38%	-15%	-7%	0%	3%

Note: The percentage change is not recorded in the above table for groups with fewer than 10 placed applicants in that cycle or in the 2017 cycle.

### C.12 Placed applicants from Wales by age group at 6 days after A level results day

Selected age groups: difference between cycle and 2017 cycle

- 17 and under
- 18
- 19
- 20 to 24
- 25 and over



Note: The percentage change is not plotted in the above chart for groups with fewer than 30 placed applicants in any one cycle.



### C.13 Placed applicants from Wales by age group at 6 days after A level results day

All age groups

Domicile of applicant	Age group	2009	2010	2011	2012	2013	2014	2015	2016	2017	2018
Wales	17 and under	40	30	30	20	30	20	20	20	20	20
	18	9,970	9,520	9,150	9,560	9,480	9,840	10,280	10,420	10,110	9,960
	19	2,990	3,050	3,240	3,370	3,430	3,590	3,510	3,640	3,410	3,220
	20 to 24	2,710	2,480	2,530	2,760	2,790	2,870	2,830	2,850	2,920	2,620
	25 and over	1,730	1,540	1,550	1,490	1,680	1,840	1,860	1,780	1,840	2,010

### C.14 Placed applicants from Wales by age group at 6 days after A level results day

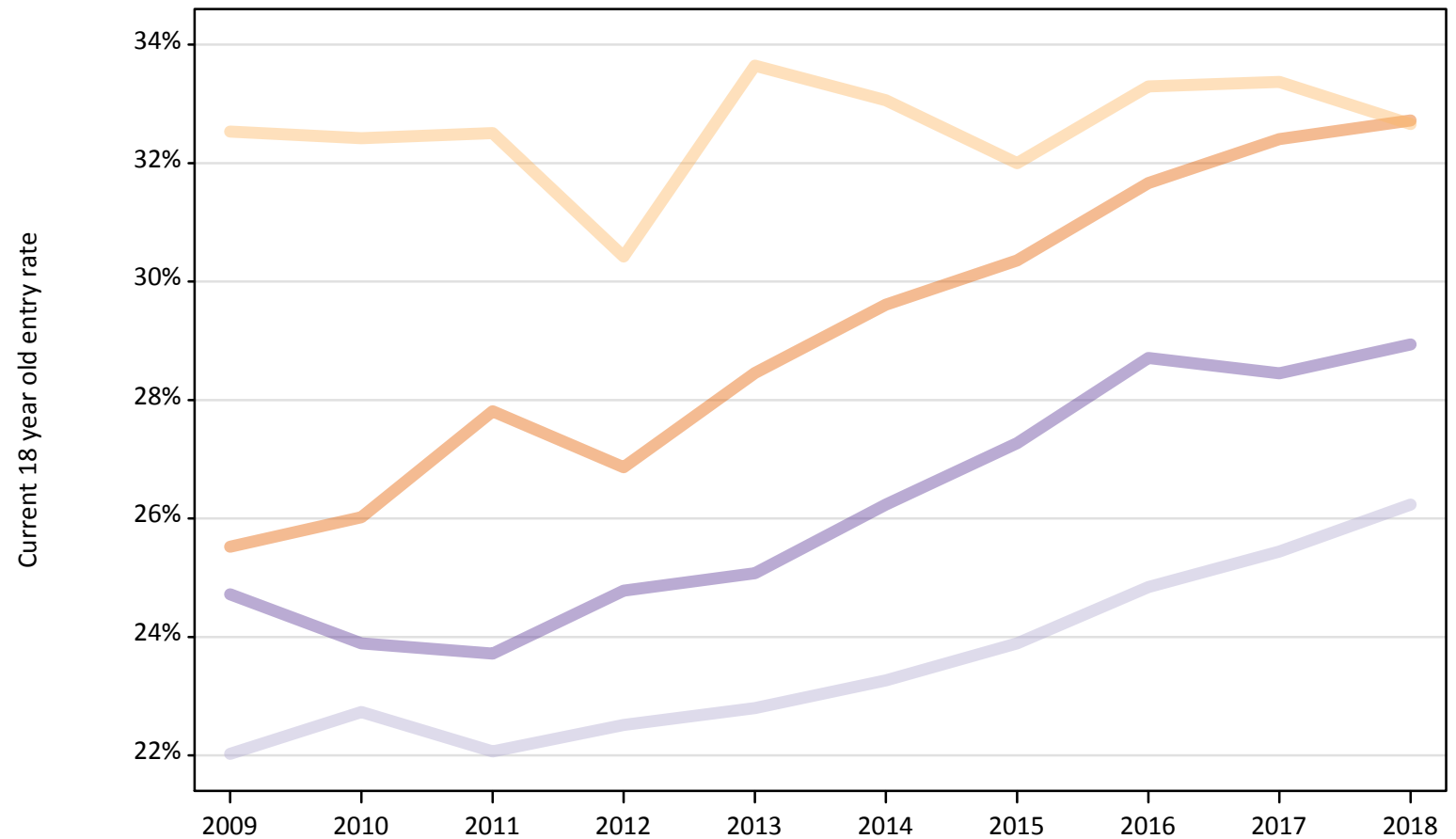
Selected age groups: difference between cycle and 2017 cycle

Domicile of applicant	Age group	2009	2010	2011	2012	2013	2014	2015	2016	2017	2018
Wales	17 and under	163%	113%	94%	31%	69%	31%	6%	44%	0%	50%
	18	-1%	-6%	-9%	-5%	-6%	-3%	2%	3%	0%	-2%
	19	-12%	-10%	-5%	-1%	1%	5%	3%	7%	0%	-5%
	20 to 24	-7%	-15%	-13%	-6%	-4%	-2%	-3%	-2%	0%	-10%
	25 and over	-6%	-16%	-16%	-19%	-9%	-0%	1%	-3%	0%	9%

Note: The percentage change is not recorded in the above table for groups with fewer than 10 placed applicants in that cycle or in the 2017 cycle.

### C.15 Entry rates for 18 year olds by UK country of domicile: 6 days after A level results day

Placed 18 year old applicants as a proportion of the 18 year old population



### C.16 Entry rates for 18 year olds by UK country of domicile: 6 days after A level results day

Placed 18 year old applicants as a proportion of the 18 year old population

Domicile of applicant	Age group	2009	2010	2011	2012	2013	2014	2015	2016	2017	2018
England	18	25.5%	26.0%	27.8%	26.9%	28.5%	29.6%	30.4%	31.7%	32.4%	32.7%
Northern Ireland	18	32.5%	32.4%	32.5%	30.4%	33.6%	33.1%	32.0%	33.3%	33.4%	32.7%
Scotland	18	22.0%	22.7%	22.1%	22.5%	22.8%	23.3%	23.9%	24.8%	25.4%	26.2%
Wales	18	24.7%	23.9%	23.7%	24.8%	25.1%	26.2%	27.3%	28.7%	28.5%	28.9%