

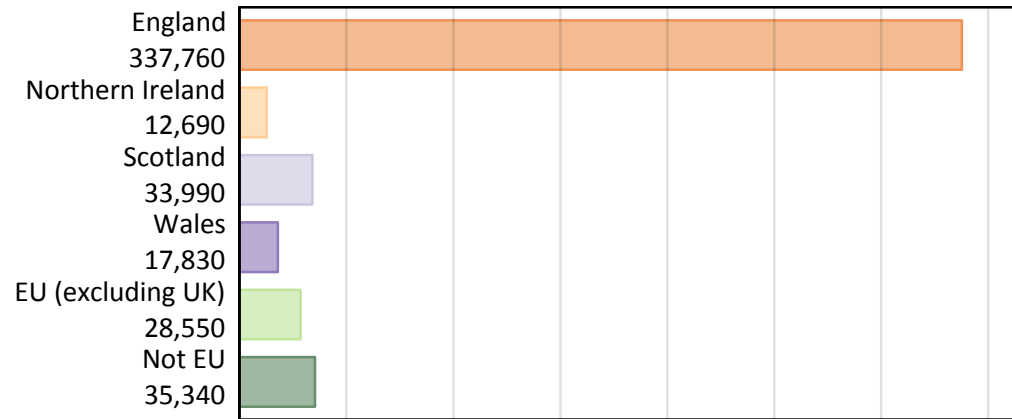
# Daily Clearing Analysis: Country

Analysis at 00:05 on Wednesday 22 August 2018 (6 days after A level results day)

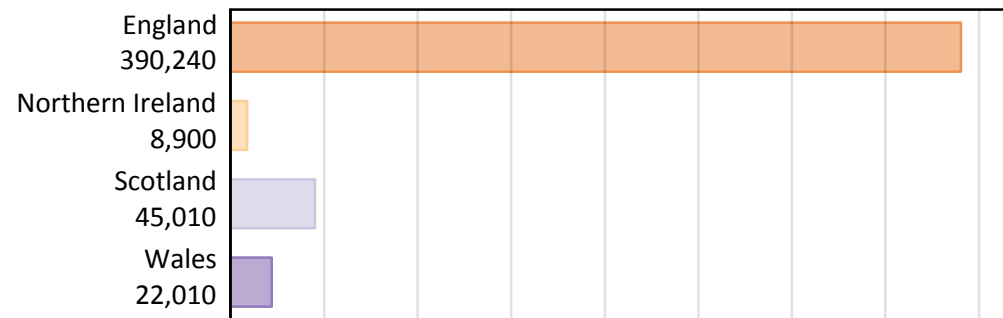
## B.1 Placed applicants by country of provider and domicile, 2018 cycle

Domicile of applicant	Country of provider				
	England	Northern Ireland	Scotland	Wales	UK
England	323,220	300	4,560	9,690	337,760
Northern Ireland	3,650	7,940	970	140	12,690
Scotland	1,440	30	32,480	40	33,990
Wales	7,570	10	140	10,110	17,830
EU (excluding UK)	23,120	370	3,980	1,080	28,550
Not EU	31,240	260	2,880	960	35,340
All	390,240	8,900	45,010	22,010	466,160

### B.2 Placed applicants by domicile group



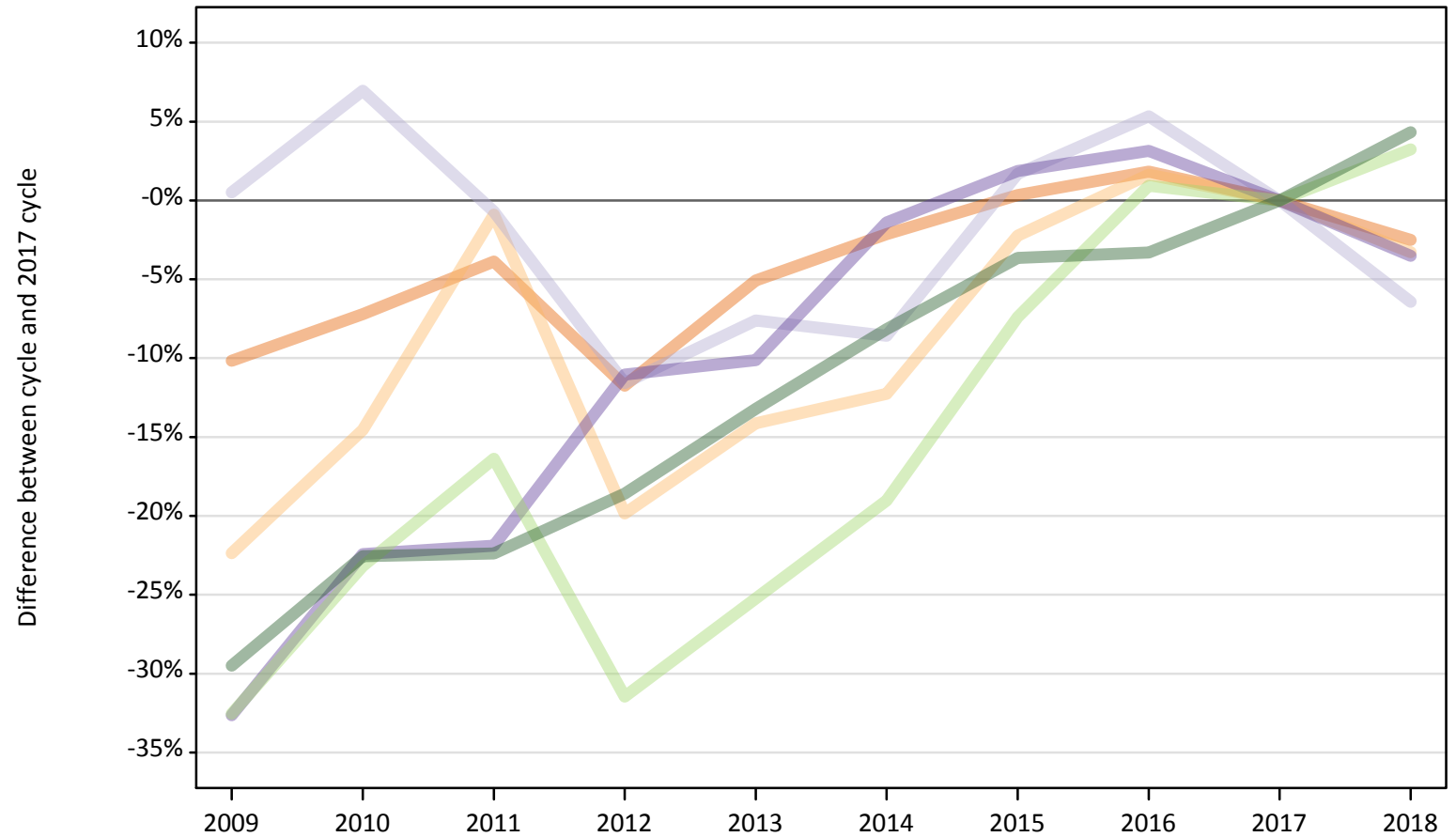
### B.3 Placed applicants by country of provider



### B.4 Placed applicants at 6 days after A level results day: providers in England

Selected applicant domiciles: difference between cycle and 2017 cycle (at 6 days after A level results day)

- England
- Northern Ireland
- Scotland
- Wales
- EU (excluding UK)
- Not EU



Note: The percentage change is not plotted in the above chart for groups with fewer than 30 placed applicants in any one cycle.

### B.5 Placed applicants at 6 days after A level results day: providers in England

Placed applicants by domicile (at 6 days after A level results day)

Domicile of applicant	2009	2010	2011	2012	2013	2014	2015	2016	2017	2018
England	297,810	307,580	318,650	292,540	314,640	324,420	332,610	337,540	331,480	323,220
Northern Ireland	2,930	3,230	3,740	3,030	3,240	3,310	3,690	3,840	3,780	3,650
Scotland	1,550	1,650	1,530	1,360	1,420	1,410	1,570	1,620	1,540	1,440
Wales	5,290	6,090	6,130	6,980	7,050	7,740	7,990	8,100	7,850	7,570
EU (excluding UK)	15,110	17,210	18,730	15,350	16,750	18,140	20,740	22,610	22,400	23,120
Not EU	21,120	23,190	23,240	24,380	25,990	27,500	28,860	28,960	29,950	31,240

### B.6 Placed applicants at 6 days after A level results day: providers in England

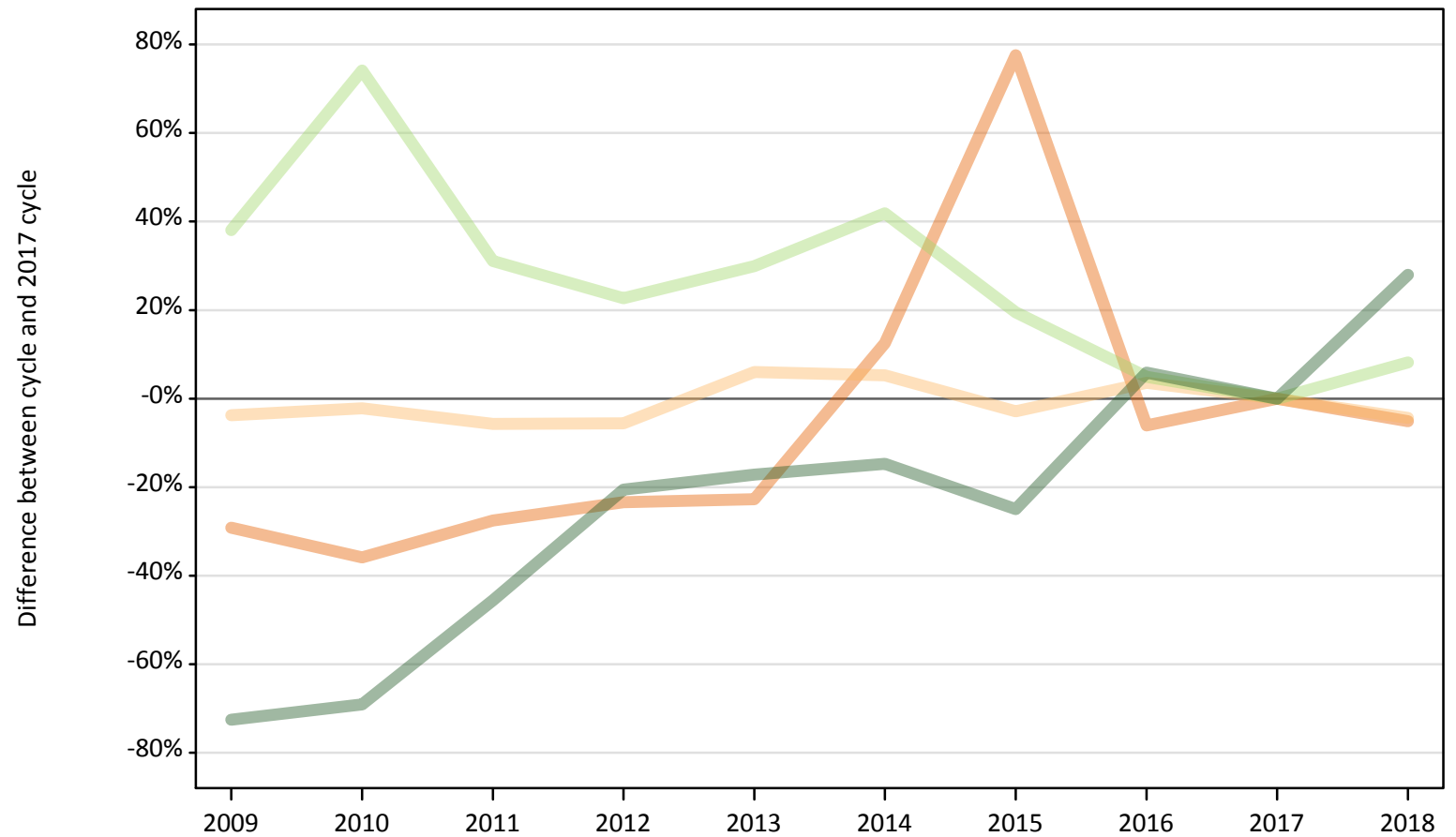
Selected applicant domiciles: difference between cycle and 2017 cycle (at 6 days after A level results day)

Domicile of applicant	2009	2010	2011	2012	2013	2014	2015	2016	2017	2018
England	-10%	-7%	-4%	-12%	-5%	-2%	0%	2%	0%	-2%
Northern Ireland	-22%	-15%	-1%	-20%	-14%	-12%	-2%	2%	0%	-3%
Scotland	1%	7%	-1%	-12%	-8%	-9%	2%	5%	0%	-6%
Wales	-33%	-22%	-22%	-11%	-10%	-1%	2%	3%	0%	-4%
EU (excluding UK)	-33%	-23%	-16%	-31%	-25%	-19%	-7%	1%	0%	3%
Not EU	-29%	-23%	-22%	-19%	-13%	-8%	-4%	-3%	0%	4%

Note: The percentage change is not recorded in the above table for groups with fewer than 10 placed applicants in that cycle or in the 2017 cycle.

**B.7 Placed applicants at 6 days after A level results day: providers in Northern Ireland**  
Selected applicant domiciles: difference between cycle and 2017 cycle (at 6 days after A level results day)

- England
- Northern Ireland
- Scotland
- Wales
- EU (excluding UK)
- Not EU



Note: The percentage change is not plotted in the above chart for groups with fewer than 30 placed applicants in any one cycle.

### B.8 Placed applicants at 6 days after A level results day: providers in Northern Ireland

Placed applicants by domicile (at 6 days after A level results day)

Domicile of applicant	2009	2010	2011	2012	2013	2014	2015	2016	2017	2018
England	220	200	230	240	240	350	550	290	310	300
Northern Ireland	7,980	8,110	7,820	7,840	8,800	8,740	8,060	8,590	8,300	7,940
Scotland	20	20	20	30	10	20	20	20	30	30
Wales	10	10	10	0	0	10	10	10	10	10
EU (excluding UK)	480	600	450	420	450	490	410	360	340	370
Not EU	60	60	110	160	170	170	150	220	200	260

### B.9 Placed applicants at 6 days after A level results day: providers in Northern Ireland

Selected applicant domiciles: difference between cycle and 2017 cycle (at 6 days after A level results day)

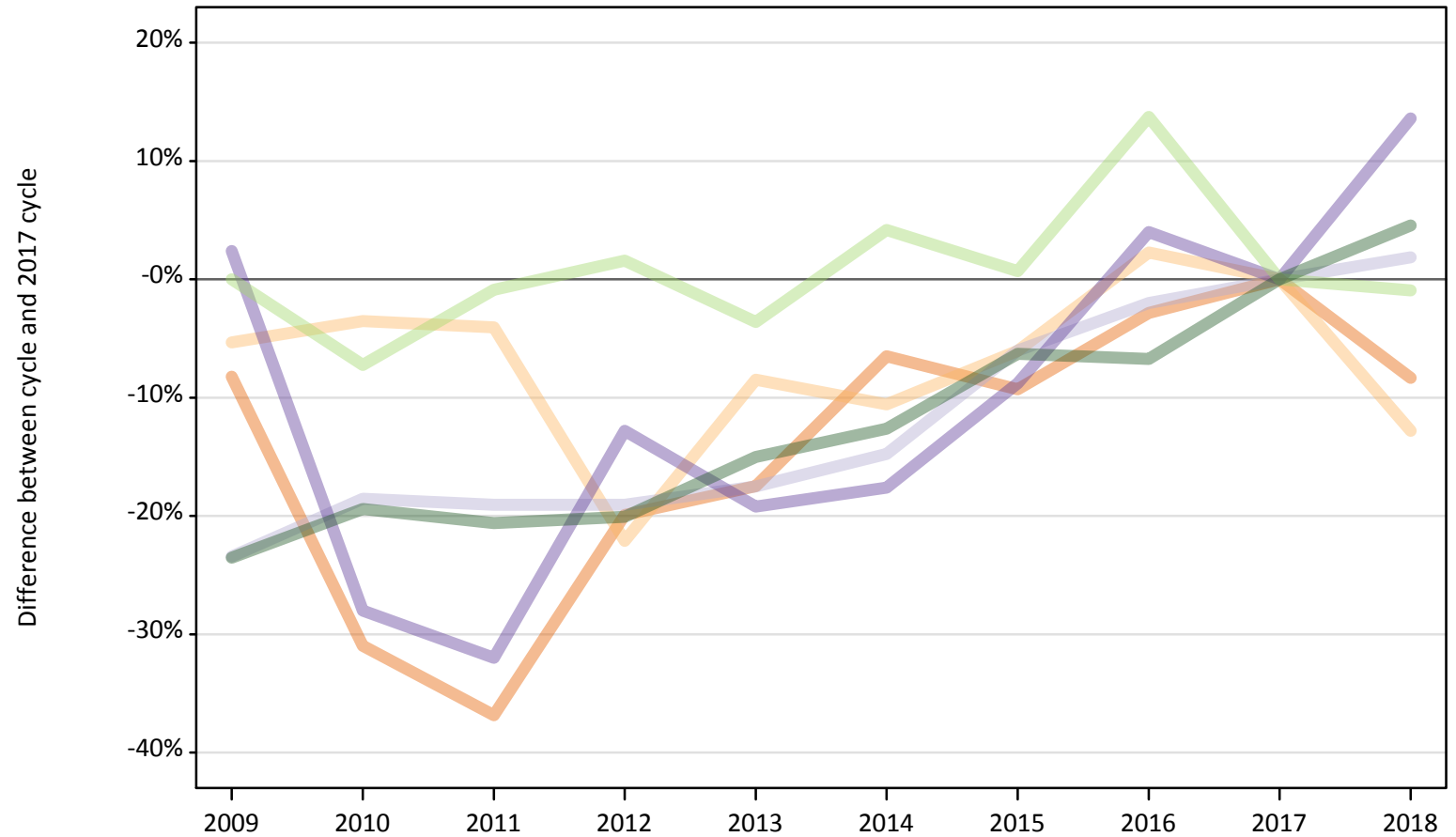
Domicile of applicant	2009	2010	2011	2012	2013	2014	2015	2016	2017	2018
England	-29%	-36%	-28%	-23%	-23%	13%	78%	-6%	0%	-5%
Northern Ireland	-4%	-2%	-6%	-6%	6%	5%	-3%	4%	0%	-4%
Scotland	-47%	-23%	-43%	-10%	-60%	-43%	-37%	-47%	0%	-13%
Wales	-14%	-57%	-50%			-50%	-21%	-29%	0%	-29%
EU (excluding UK)	38%	74%	31%	23%	30%	42%	19%	5%	0%	8%
Not EU	-73%	-69%	-46%	-21%	-17%	-15%	-25%	6%	0%	28%

Note: The percentage change is not recorded in the above table for groups with fewer than 10 placed applicants in that cycle or in the 2017 cycle.

### B.10 Placed applicants at 6 days after A level results day: providers in Scotland

Selected applicant domiciles: difference between cycle and 2017 cycle (at 6 days after A level results day)

- England
- Northern Ireland
- Scotland
- Wales
- EU (excluding UK)
- Not EU



Note: The percentage change is not plotted in the above chart for groups with fewer than 30 placed applicants in any one cycle.

**B.11 Placed applicants at 6 days after A level results day: providers in Scotland**

Placed applicants by domicile (at 6 days after A level results day)

Domicile of applicant	2009	2010	2011	2012	2013	2014	2015	2016	2017	2018
England	4,570	3,430	3,140	3,980	4,100	4,650	4,510	4,830	4,970	4,560
Northern Ireland	1,050	1,070	1,060	860	1,010	990	1,040	1,130	1,110	970
Scotland	24,420	25,980	25,810	25,810	26,310	27,180	29,970	31,250	31,890	32,480
Wales	130	90	90	110	100	100	110	130	130	140
EU (excluding UK)	4,020	3,730	3,980	4,080	3,870	4,190	4,050	4,570	4,020	3,980
Not EU	2,100	2,220	2,180	2,200	2,340	2,400	2,580	2,570	2,750	2,880

**B.12 Placed applicants at 6 days after A level results day: providers in Scotland**

Selected applicant domiciles: difference between cycle and 2017 cycle (at 6 days after A level results day)

Domicile of applicant	2009	2010	2011	2012	2013	2014	2015	2016	2017	2018
England	-8%	-31%	-37%	-20%	-17%	-6%	-9%	-3%	0%	-8%
Northern Ireland	-5%	-4%	-4%	-22%	-8%	-11%	-6%	2%	0%	-13%
Scotland	-23%	-19%	-19%	-19%	-18%	-15%	-6%	-2%	0%	2%
Wales	2%	-28%	-32%	-13%	-19%	-18%	-9%	4%	0%	14%
EU (excluding UK)	0%	-7%	-1%	2%	-4%	4%	1%	14%	0%	-1%
Not EU	-24%	-19%	-21%	-20%	-15%	-13%	-6%	-7%	0%	5%

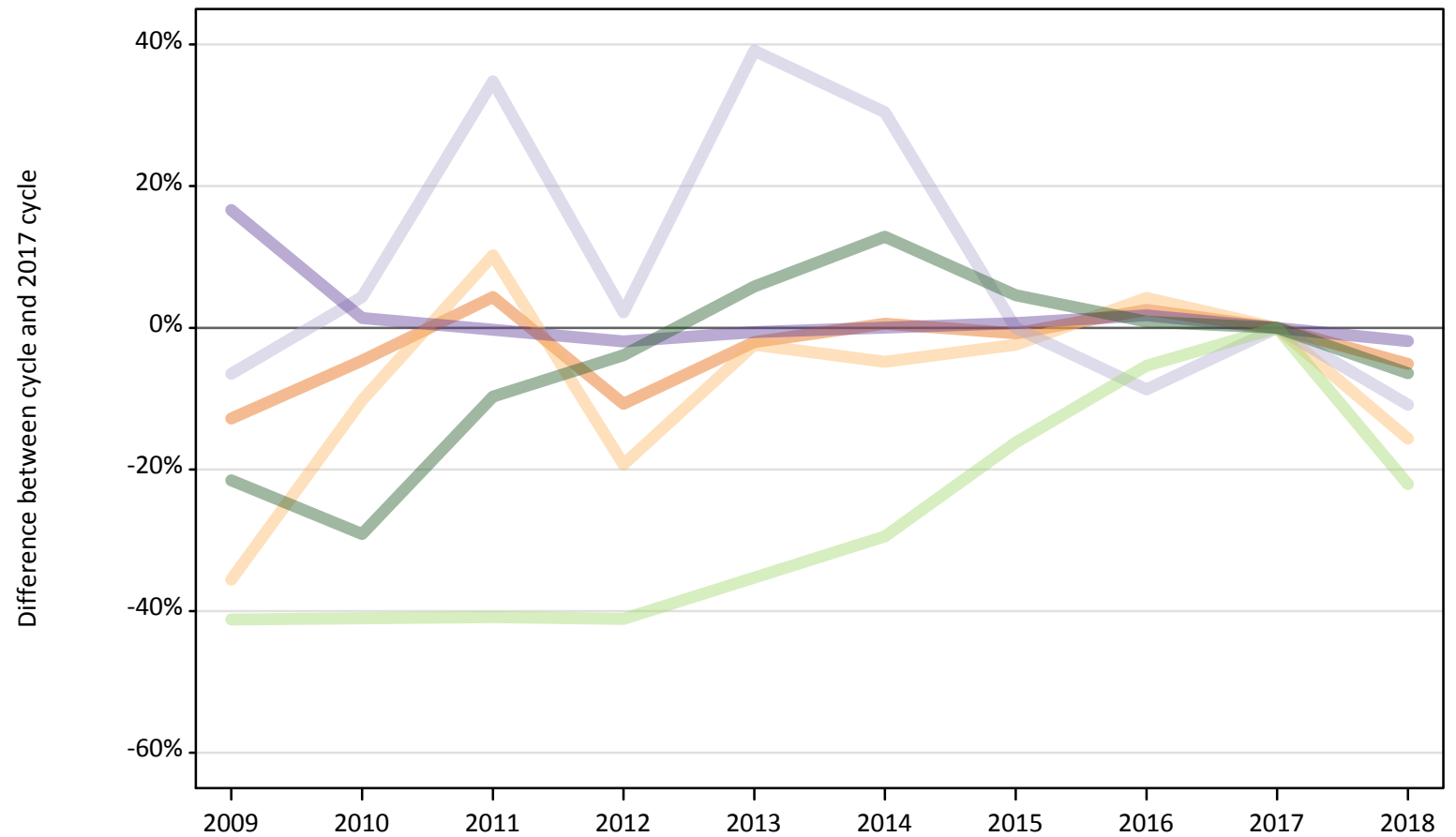
Note: The percentage change is not recorded in the above table for groups with fewer than 10 placed applicants in that cycle or in the 2017 cycle.



### B.13 Placed applicants at 6 days after A level results day: providers in Wales

Selected applicant domiciles: difference between cycle and 2017 cycle (at 6 days after A level results day)

- England
- Northern Ireland
- Scotland
- Wales
- EU (excluding UK)
- Not EU



Note: The percentage change is not plotted in the above chart for groups with fewer than 30 placed applicants in any one cycle.

**B.14 Placed applicants at 6 days after A level results day: providers in Wales**

Placed applicants by domicile (at 6 days after A level results day)

Domicile of applicant	2009	2010	2011	2012	2013	2014	2015	2016	2017	2018
England	8,900	9,730	10,650	9,110	10,000	10,270	10,130	10,470	10,210	9,690
Northern Ireland	110	150	180	130	160	160	160	170	170	140
Scotland	40	50	60	50	60	60	50	40	50	40
Wales	12,010	10,440	10,270	10,100	10,240	10,300	10,370	10,480	10,300	10,110
EU (excluding UK)	810	810	820	810	890	970	1,160	1,310	1,380	1,080
Not EU	810	730	930	990	1,090	1,160	1,070	1,040	1,030	960

**B.15 Placed applicants at 6 days after A level results day: providers in Wales**

Selected applicant domiciles: difference between cycle and 2017 cycle (at 6 days after A level results day)

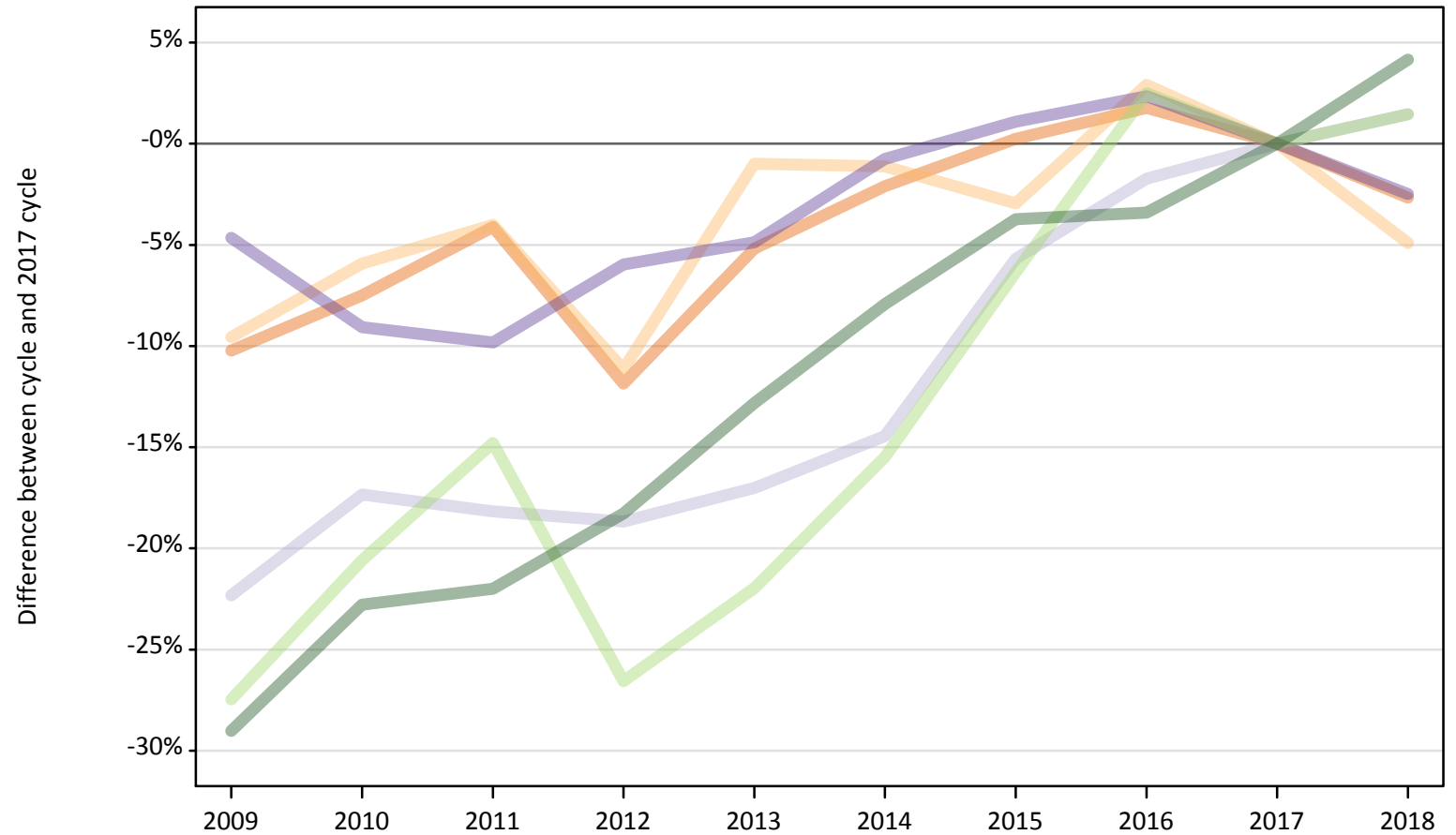
Domicile of applicant	2009	2010	2011	2012	2013	2014	2015	2016	2017	2018
England	-13%	-5%	4%	-11%	-2%	1%	-1%	3%	0%	-5%
Northern Ireland	-36%	-10%	10%	-19%	-2%	-5%	-2%	4%	0%	-16%
Scotland	-7%	4%	35%	2%	39%	30%	0%	-9%	0%	-11%
Wales	17%	1%	-0%	-2%	-1%	0%	1%	2%	0%	-2%
EU (excluding UK)	-41%	-41%	-41%	-41%	-35%	-29%	-16%	-5%	0%	-22%
Not EU	-22%	-29%	-10%	-4%	6%	13%	5%	1%	0%	-6%

Note: The percentage change is not recorded in the above table for groups with fewer than 10 placed applicants in that cycle or in the 2017 cycle.

### B.16 Placed applicants at 6 days after A level results day: providers in the UK

Selected applicant domiciles: difference between cycle and 2017 cycle (at 6 days after A level results day)

- England
- Northern Ireland
- Scotland
- Wales
- EU (excluding UK)
- Not EU



Note: The percentage change is not plotted in the above chart for groups with fewer than 30 placed applicants in any one cycle.

**B.17 Placed applicants at 6 days after A level results day: providers in the UK**

Placed applicants by domicile (at 6 days after A level results day)

Domicile of applicant	2009	2010	2011	2012	2013	2014	2015	2016	2017	2018
England	311,490	320,950	332,670	305,870	328,990	339,690	347,800	353,130	346,970	337,760
Northern Ireland	12,070	12,560	12,810	11,860	13,210	13,200	12,950	13,730	13,350	12,690
Scotland	26,030	27,690	27,410	27,250	27,800	28,660	31,600	32,920	33,500	33,990
Wales	17,440	16,630	16,490	17,200	17,400	18,150	18,490	18,720	18,290	17,830
EU (excluding UK)	20,410	22,350	23,980	20,670	21,960	23,790	26,360	28,850	28,140	28,550
Not EU	24,080	26,200	26,460	27,730	29,580	31,240	32,660	32,770	33,930	35,340

**B.18 Placed applicants at 6 days after A level results day: providers in the UK**

Selected applicant domiciles: difference between cycle and 2017 cycle (at 6 days after A level results day)

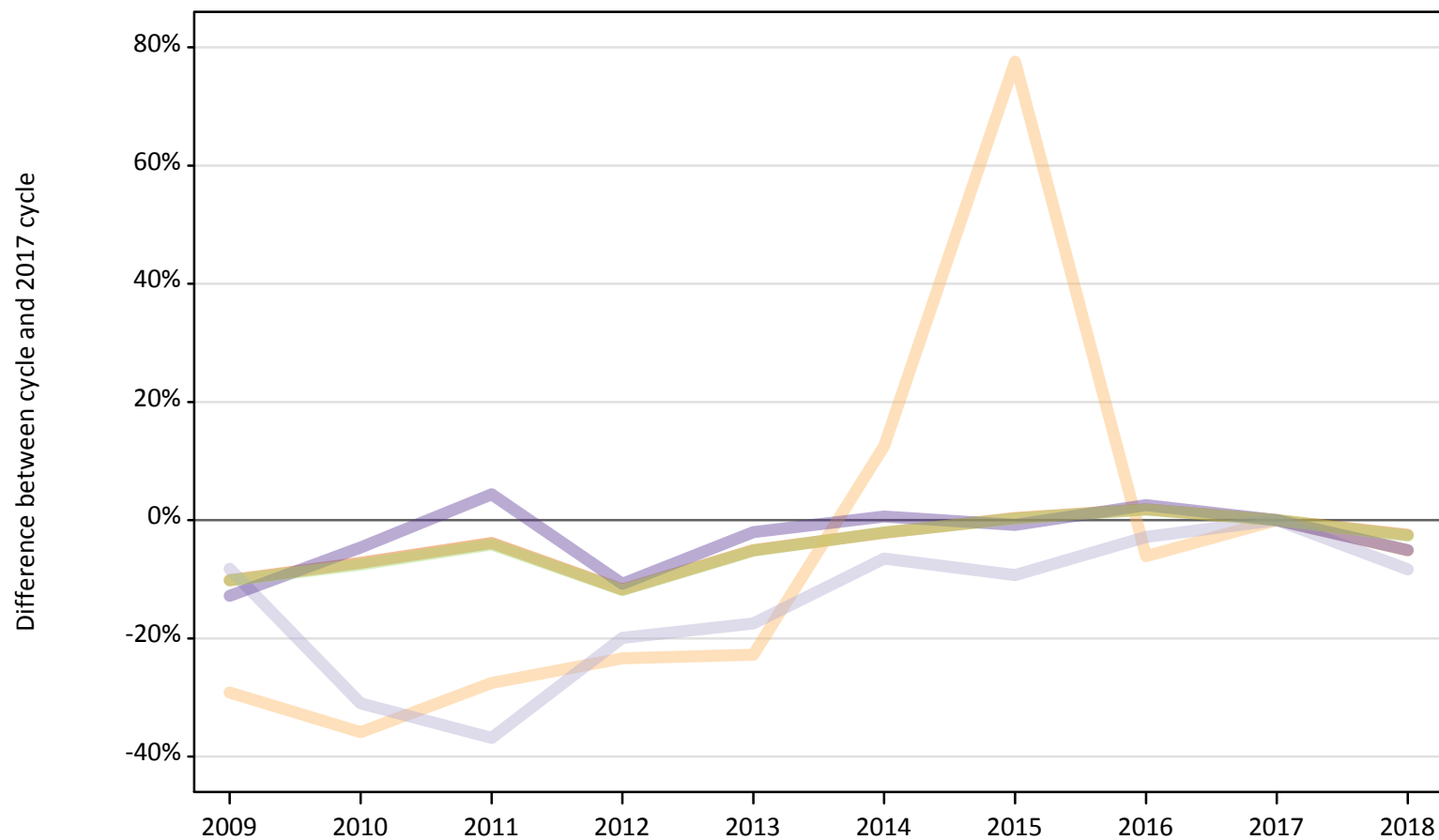
Domicile of applicant	2009	2010	2011	2012	2013	2014	2015	2016	2017	2018
England	-10%	-7%	-4%	-12%	-5%	-2%	0%	2%	0%	-3%
Northern Ireland	-10%	-6%	-4%	-11%	-1%	-1%	-3%	3%	0%	-5%
Scotland	-22%	-17%	-18%	-19%	-17%	-14%	-6%	-2%	0%	1%
Wales	-5%	-9%	-10%	-6%	-5%	-1%	1%	2%	0%	-2%
EU (excluding UK)	-27%	-21%	-15%	-27%	-22%	-15%	-6%	2%	0%	1%
Not EU	-29%	-23%	-22%	-18%	-13%	-8%	-4%	-3%	0%	4%

Note: The percentage change is not recorded in the above table for groups with fewer than 10 placed applicants in that cycle or in the 2017 cycle.

### B.19 Placed applicants at 6 days after A level results day: domiciled in England

Selected provider countries: difference between cycle and 2017 cycle (at 6 days after A level results day)

- England
- Northern Ireland
- Scotland
- Wales
- UK



Note: The percentage change is not plotted in the above chart for groups with fewer than 30 placed applicants in any one cycle.

## B.20 Placed applicants at 6 days after A level results day: domiciled in England

Placed applicants by provider country (at 6 days after A level results day)

Country of provider	2009	2010	2011	2012	2013	2014	2015	2016	2017	2018
England	297,810	307,580	318,650	292,540	314,640	324,420	332,610	337,540	331,480	323,220
Northern Ireland	220	200	230	240	240	350	550	290	310	300
Scotland	4,570	3,430	3,140	3,980	4,100	4,650	4,510	4,830	4,970	4,560
Wales	8,900	9,730	10,650	9,110	10,000	10,270	10,130	10,470	10,210	9,690
UK	311,490	320,950	332,670	305,870	328,990	339,690	347,800	353,130	346,970	337,760

## B.21 Placed applicants at 6 days after A level results day: domiciled in England

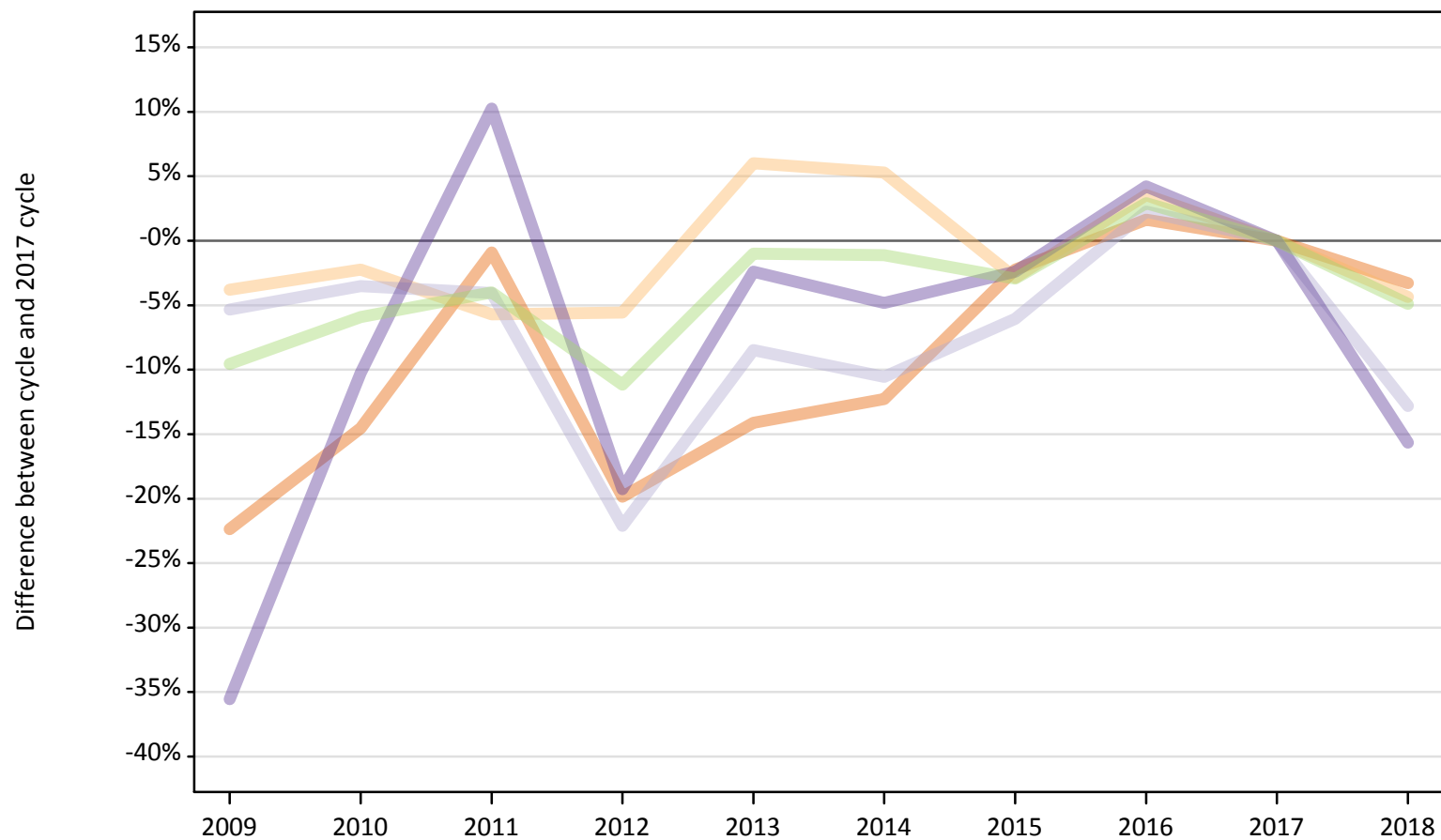
Selected provider countries: difference between cycle and 2017 cycle (at 6 days after A level results day)

Country of provider	2009	2010	2011	2012	2013	2014	2015	2016	2017	2018
England	-10%	-7%	-4%	-12%	-5%	-2%	0%	2%	0%	-2%
Northern Ireland	-29%	-36%	-28%	-23%	-23%	13%	78%	-6%	0%	-5%
Scotland	-8%	-31%	-37%	-20%	-17%	-6%	-9%	-3%	0%	-8%
Wales	-13%	-5%	4%	-11%	-2%	1%	-1%	3%	0%	-5%
UK	-10%	-7%	-4%	-12%	-5%	-2%	0%	2%	0%	-3%

Note: The percentage change is not recorded in the above table for groups with fewer than 10 placed applicants in that cycle or in the 2017 cycle.

**B.22 Placed applicants at 6 days after A level results day: domiciled in Northern Ireland**  
Selected provider countries: difference between cycle and 2017 cycle (at 6 days after A level results day)

- England
- Northern Ireland
- Scotland
- Wales
- UK



Note: The percentage change is not plotted in the above chart for groups with fewer than 30 placed applicants in any one cycle.

### B.23 Placed applicants at 6 days after A level results day: domiciled in Northern Ireland

Placed applicants by provider country (at 6 days after A level results day)

Country of provider	2009	2010	2011	2012	2013	2014	2015	2016	2017	2018
England	2,930	3,230	3,740	3,030	3,240	3,310	3,690	3,840	3,780	3,650
Northern Ireland	7,980	8,110	7,820	7,840	8,800	8,740	8,060	8,590	8,300	7,940
Scotland	1,050	1,070	1,060	860	1,010	990	1,040	1,130	1,110	970
Wales	110	150	180	130	160	160	160	170	170	140
UK	12,070	12,560	12,810	11,860	13,210	13,200	12,950	13,730	13,350	12,690

### B.24 Placed applicants at 6 days after A level results day: domiciled in Northern Ireland

Selected provider countries: difference between cycle and 2017 cycle (at 6 days after A level results day)

Country of provider	2009	2010	2011	2012	2013	2014	2015	2016	2017	2018
England	-22%	-15%	-1%	-20%	-14%	-12%	-2%	2%	0%	-3%
Northern Ireland	-4%	-2%	-6%	-6%	6%	5%	-3%	4%	0%	-4%
Scotland	-5%	-4%	-4%	-22%	-8%	-11%	-6%	2%	0%	-13%
Wales	-36%	-10%	10%	-19%	-2%	-5%	-2%	4%	0%	-16%
UK	-10%	-6%	-4%	-11%	-1%	-1%	-3%	3%	0%	-5%

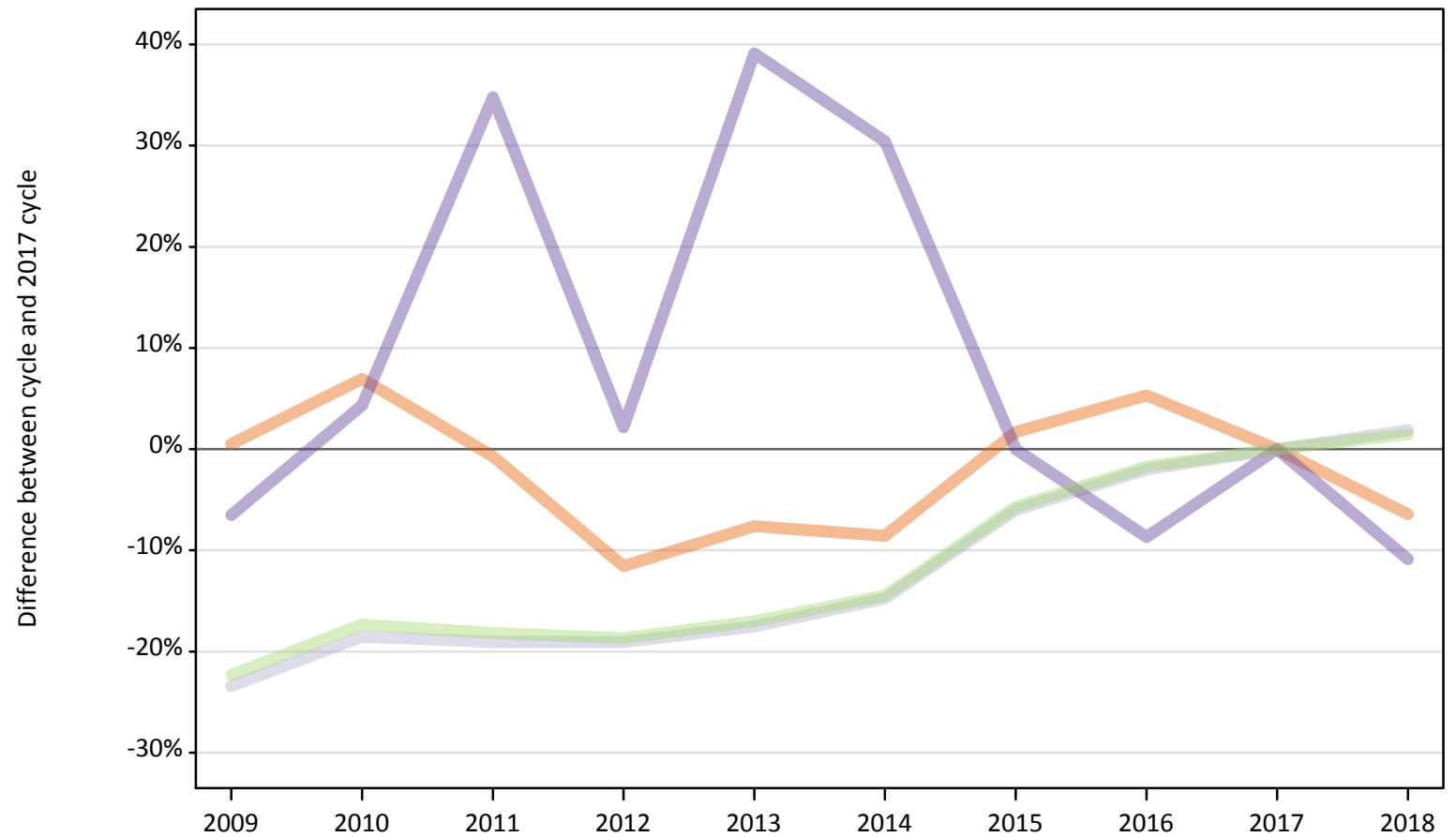
Note: The percentage change is not recorded in the above table for groups with fewer than 10 placed applicants in that cycle or in the 2017 cycle.



### B.25 Placed applicants at 6 days after A level results day: domiciled in Scotland

Selected provider countries: difference between cycle and 2017 cycle (at 6 days after A level results day)

- England
- Northern Ireland
- Scotland
- Wales
- UK



Note: The percentage change is not plotted in the above chart for groups with fewer than 30 placed applicants in any one cycle.

**B.26 Placed applicants at 6 days after A level results day: domiciled in Scotland**

Placed applicants by provider country (at 6 days after A level results day)

Country of provider	2009	2010	2011	2012	2013	2014	2015	2016	2017	2018
England	1,550	1,650	1,530	1,360	1,420	1,410	1,570	1,620	1,540	1,440
Northern Ireland	20	20	20	30	10	20	20	20	30	30
Scotland	24,420	25,980	25,810	25,810	26,310	27,180	29,970	31,250	31,890	32,480
Wales	40	50	60	50	60	60	50	40	50	40
UK	26,030	27,690	27,410	27,250	27,800	28,660	31,600	32,920	33,500	33,990

**B.27 Placed applicants at 6 days after A level results day: domiciled in Scotland**

Selected provider countries: difference between cycle and 2017 cycle (at 6 days after A level results day)

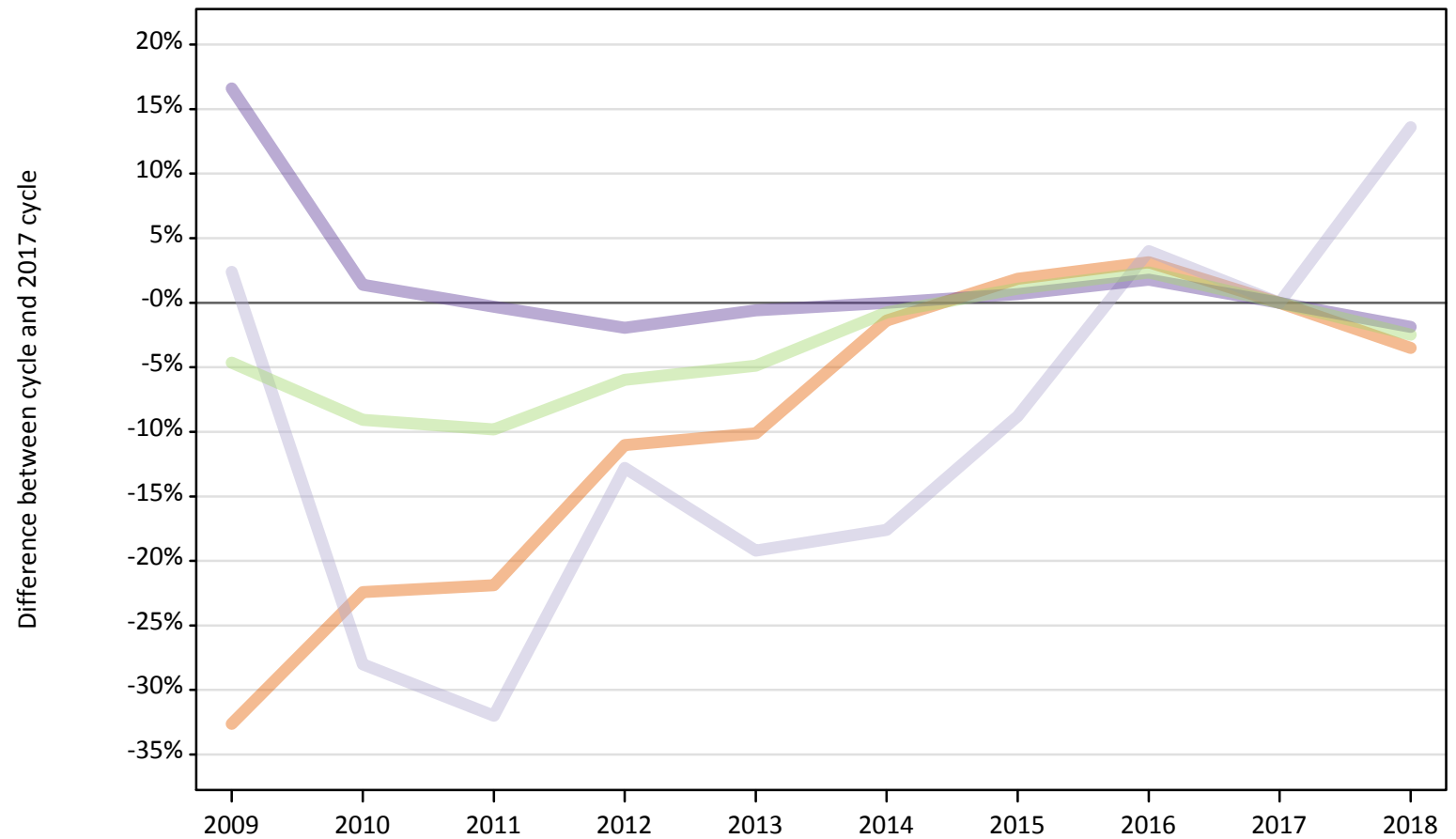
Country of provider	2009	2010	2011	2012	2013	2014	2015	2016	2017	2018
England	1%	7%	-1%	-12%	-8%	-9%	2%	5%	0%	-6%
Northern Ireland	-47%	-23%	-43%	-10%	-60%	-43%	-37%	-47%	0%	-13%
Scotland	-23%	-19%	-19%	-19%	-18%	-15%	-6%	-2%	0%	2%
Wales	-7%	4%	35%	2%	39%	30%	0%	-9%	0%	-11%
UK	-22%	-17%	-18%	-19%	-17%	-14%	-6%	-2%	0%	1%

Note: The percentage change is not recorded in the above table for groups with fewer than 10 placed applicants in that cycle or in the 2017 cycle.

### B.28 Placed applicants at 6 days after A level results day: domiciled in Wales

Selected provider countries: difference between cycle and 2017 cycle (at 6 days after A level results day)

- England
- Northern Ireland
- Scotland
- Wales
- UK



Note: The percentage change is not plotted in the above chart for groups with fewer than 30 placed applicants in any one cycle.

**B.29 Placed applicants at 6 days after A level results day: domiciled in Wales**

Placed applicants by provider country (at 6 days after A level results day)

Country of provider	2009	2010	2011	2012	2013	2014	2015	2016	2017	2018
England	5,290	6,090	6,130	6,980	7,050	7,740	7,990	8,100	7,850	7,570
Northern Ireland	10	10	10	0	0	10	10	10	10	10
Scotland	130	90	90	110	100	100	110	130	130	140
Wales	12,010	10,440	10,270	10,100	10,240	10,300	10,370	10,480	10,300	10,110
UK	17,440	16,630	16,490	17,200	17,400	18,150	18,490	18,720	18,290	17,830

**B.30 Placed applicants at 6 days after A level results day: domiciled in Wales**

Selected provider countries: difference between cycle and 2017 cycle (at 6 days after A level results day)

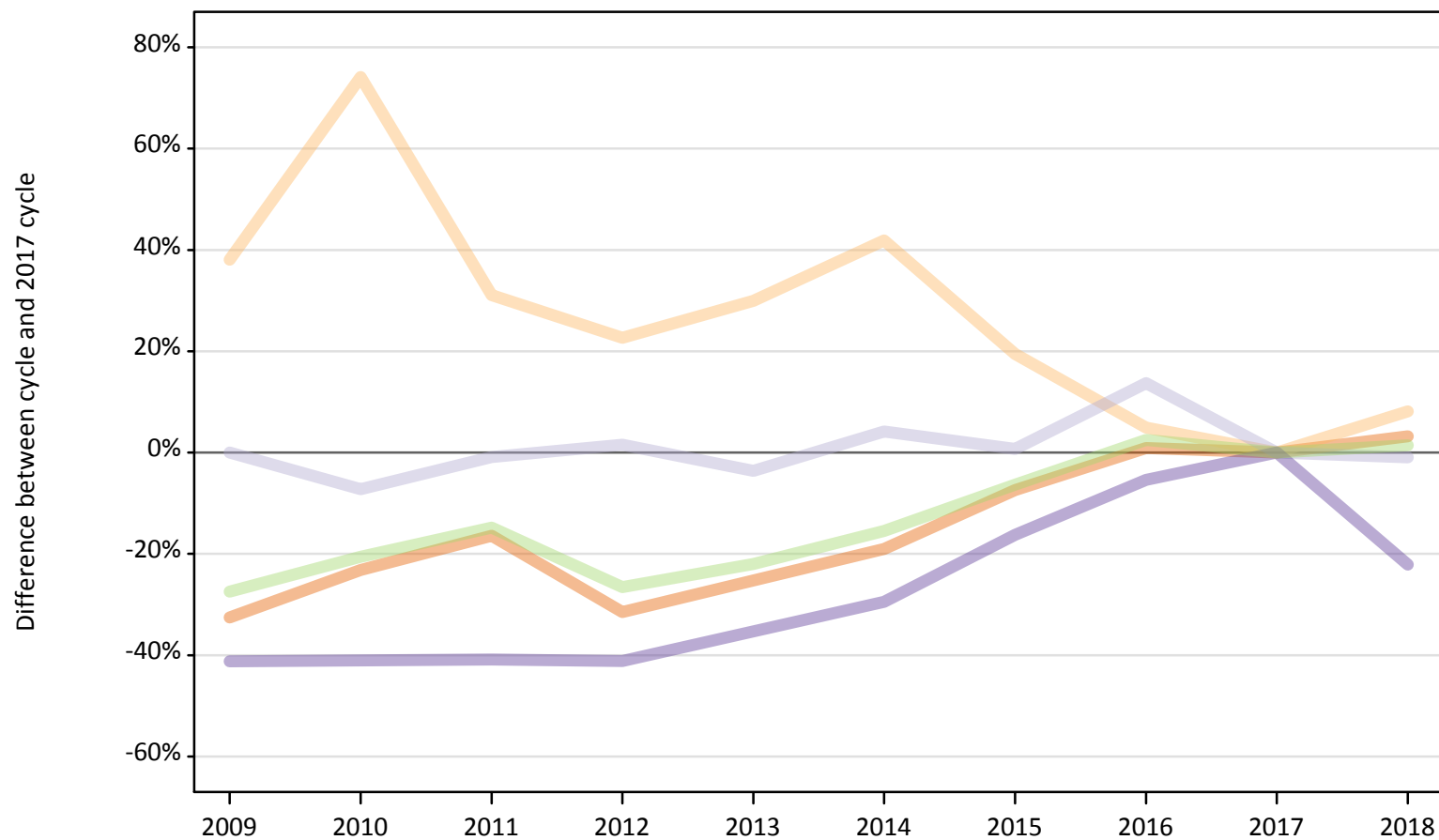
Country of provider	2009	2010	2011	2012	2013	2014	2015	2016	2017	2018
England	-33%	-22%	-22%	-11%	-10%	-1%	2%	3%	0%	-4%
Northern Ireland	-14%	-57%	-50%			-50%	-21%	-29%	0%	-29%
Scotland	2%	-28%	-32%	-13%	-19%	-18%	-9%	4%	0%	14%
Wales	17%	1%	-0%	-2%	-1%	0%	1%	2%	0%	-2%
UK	-5%	-9%	-10%	-6%	-5%	-1%	1%	2%	0%	-2%

Note: The percentage change is not recorded in the above table for groups with fewer than 10 placed applicants in that cycle or in the 2017 cycle.

### B.31 Placed applicants at 6 days after A level results day: domiciled in EU (excluding UK)

Selected provider countries: difference between cycle and 2017 cycle (at 6 days after A level results day)

- England
- Northern Ireland
- Scotland
- Wales
- UK



Note: The percentage change is not plotted in the above chart for groups with fewer than 30 placed applicants in any one cycle.

**B.32 Placed applicants at 6 days after A level results day: domiciled in EU (excluding UK)**

Placed applicants by provider country (at 6 days after A level results day)

Country of provider	2009	2010	2011	2012	2013	2014	2015	2016	2017	2018
England	15,110	17,210	18,730	15,350	16,750	18,140	20,740	22,610	22,400	23,120
Northern Ireland	480	600	450	420	450	490	410	360	340	370
Scotland	4,020	3,730	3,980	4,080	3,870	4,190	4,050	4,570	4,020	3,980
Wales	810	810	820	810	890	970	1,160	1,310	1,380	1,080
UK	20,410	22,350	23,980	20,670	21,960	23,790	26,360	28,850	28,140	28,550

**B.33 Placed applicants at 6 days after A level results day: domiciled in EU (excluding UK)**

Selected provider countries: difference between cycle and 2017 cycle (at 6 days after A level results day)

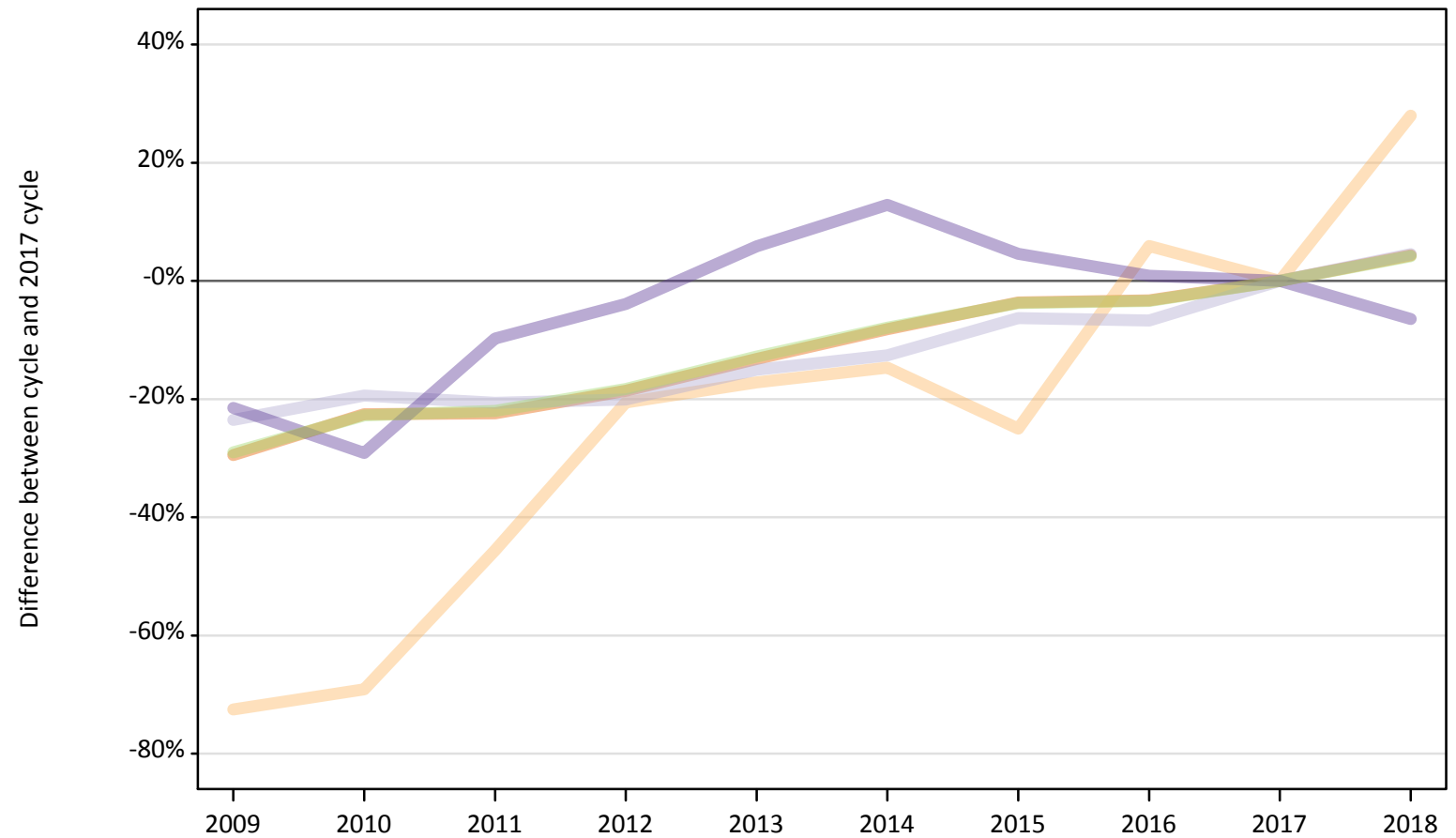
Country of provider	2009	2010	2011	2012	2013	2014	2015	2016	2017	2018
England	-33%	-23%	-16%	-31%	-25%	-19%	-7%	1%	0%	3%
Northern Ireland	38%	74%	31%	23%	30%	42%	19%	5%	0%	8%
Scotland	0%	-7%	-1%	2%	-4%	4%	1%	14%	0%	-1%
Wales	-41%	-41%	-41%	-41%	-35%	-29%	-16%	-5%	0%	-22%
UK	-27%	-21%	-15%	-27%	-22%	-15%	-6%	2%	0%	1%

Note: The percentage change is not recorded in the above table for groups with fewer than 10 placed applicants in that cycle or in the 2017 cycle.

### B.34 Placed applicants at 6 days after A level results day: domiciled in Not EU

Selected provider countries: difference between cycle and 2017 cycle (at 6 days after A level results day)

- England
- Northern Ireland
- Scotland
- Wales
- UK



Note: The percentage change is not plotted in the above chart for groups with fewer than 30 placed applicants in any one cycle.

### B.35 Placed applicants at 6 days after A level results day: domiciled in Not EU

Placed applicants by provider country (at 6 days after A level results day)

Country of provider	2009	2010	2011	2012	2013	2014	2015	2016	2017	2018
England	21,120	23,190	23,240	24,380	25,990	27,500	28,860	28,960	29,950	31,240
Northern Ireland	60	60	110	160	170	170	150	220	200	260
Scotland	2,100	2,220	2,180	2,200	2,340	2,400	2,580	2,570	2,750	2,880
Wales	810	730	930	990	1,090	1,160	1,070	1,040	1,030	960
UK	24,080	26,200	26,460	27,730	29,580	31,240	32,660	32,770	33,930	35,340

### B.36 Placed applicants at 6 days after A level results day: domiciled in Not EU

Selected provider countries: difference between cycle and 2017 cycle (at 6 days after A level results day)

Country of provider	2009	2010	2011	2012	2013	2014	2015	2016	2017	2018
England	-29%	-23%	-22%	-19%	-13%	-8%	-4%	-3%	0%	4%
Northern Ireland	-73%	-69%	-46%	-21%	-17%	-15%	-25%	6%	0%	28%
Scotland	-24%	-19%	-21%	-20%	-15%	-13%	-6%	-7%	0%	5%
Wales	-22%	-29%	-10%	-4%	6%	13%	5%	1%	0%	-6%
UK	-29%	-23%	-22%	-18%	-13%	-8%	-4%	-3%	0%	4%

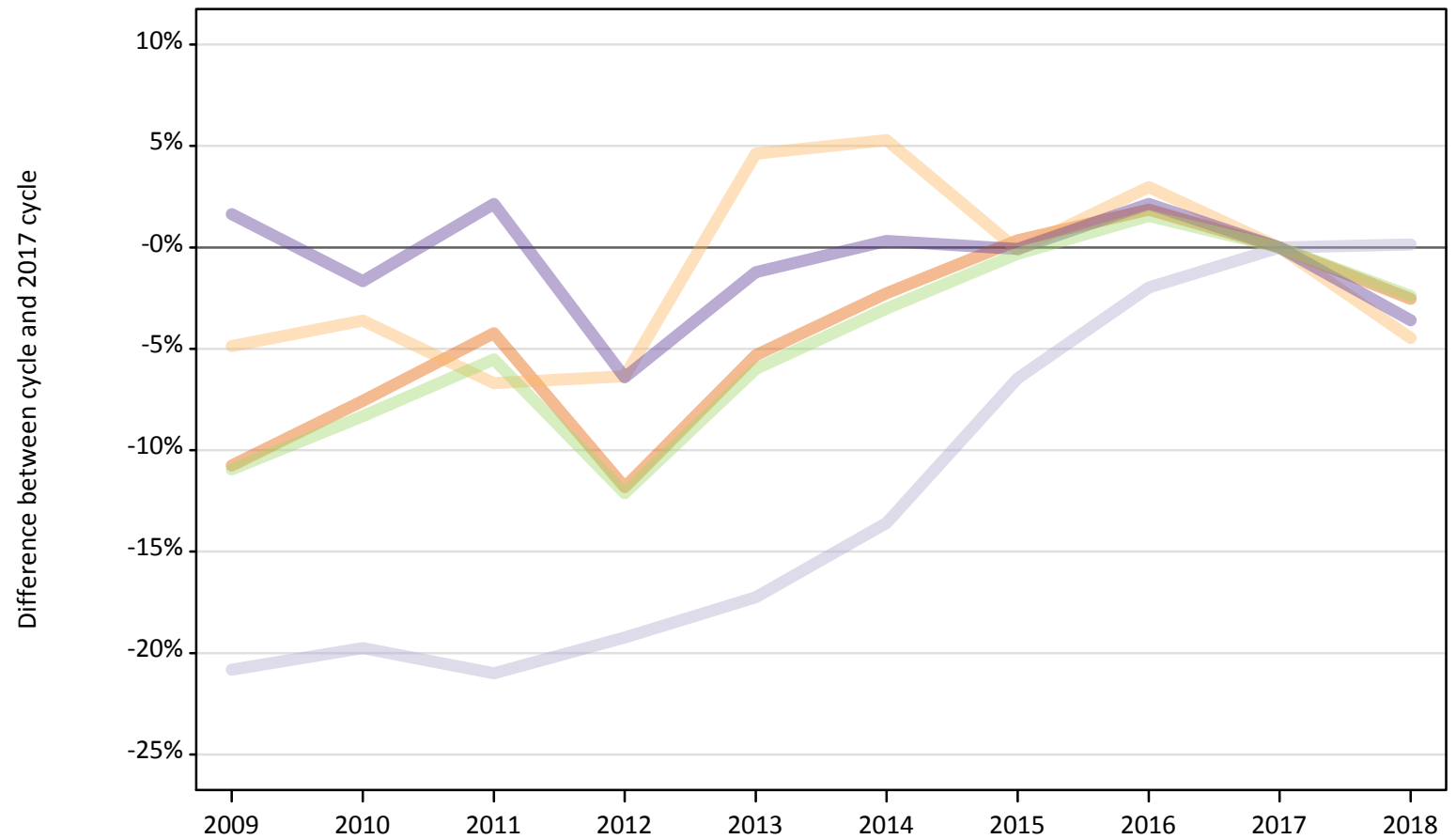
Note: The percentage change is not recorded in the above table for groups with fewer than 10 placed applicants in that cycle or in the 2017 cycle.



### B.37 Placed applicants at 6 days after A level results day: domiciled in UK

Selected provider countries: difference between cycle and 2017 cycle (at 6 days after A level results day)

- England
- Northern Ireland
- Scotland
- Wales
- UK



Note: The percentage change is not plotted in the above chart for groups with fewer than 30 placed applicants in any one cycle.

**B.38 Placed applicants at 6 days after A level results day: domiciled in UK**

Placed applicants by provider country (at 6 days after A level results day)

Country of provider	2009	2010	2011	2012	2013	2014	2015	2016	2017	2018
England	307,570	318,550	330,050	303,910	326,360	336,880	345,860	351,090	344,640	335,880
Northern Ireland	8,230	8,340	8,070	8,100	9,050	9,110	8,640	8,910	8,650	8,270
Scotland	30,160	30,570	30,100	30,770	31,520	32,920	35,630	37,340	38,090	38,150
Wales	21,060	20,370	21,170	19,390	20,470	20,790	20,700	21,170	20,720	19,980
UK	367,030	377,830	389,390	362,170	387,400	399,700	410,840	418,500	412,110	402,280

**B.39 Placed applicants at 6 days after A level results day: domiciled in UK**

Selected provider countries: difference between cycle and 2017 cycle (at 6 days after A level results day)

Country of provider	2009	2010	2011	2012	2013	2014	2015	2016	2017	2018
England	-11%	-8%	-4%	-12%	-5%	-2%	0%	2%	0%	-3%
Northern Ireland	-5%	-4%	-7%	-6%	5%	5%	-0%	3%	0%	-4%
Scotland	-21%	-20%	-21%	-19%	-17%	-14%	-6%	-2%	0%	0%
Wales	2%	-2%	2%	-6%	-1%	0%	-0%	2%	0%	-4%
UK	-11%	-8%	-6%	-12%	-6%	-3%	-0%	2%	0%	-2%

Note: The percentage change is not recorded in the above table for groups with fewer than 10 placed applicants in that cycle or in the 2017 cycle.